

UK Solid and Gaseous Biomass Carbon Calculator

Renewables Obligation: User manual for the Solid and Gaseous Biomass Carbon Calculator

Version 2.0

January 2015



Contents

FOREWORD	1
1 GETTING STARTED	3
1.1 Introduction	3
1.2 Information on calculation methodology and reporting requirements	4
1.3 General information screen	5
1.3.1 Saving company information.....	6
1.3.2 Protecting files with passwords.....	6
1.4 Adding new years and months	7
1.4.1 Adding a new year	7
1.4.2 Adding a new month.....	8
2 ADDING A NEW FUEL CHAIN	9
2.1 Loading a default fuel chain and adding actual data	9
2.2 Adding or removing modules from an existing fuel chain	11
2.3 Constructing a completely new fuel chain	13
3 ENTERING ACTUAL DATA	17
3.1 Entering values	17
3.2 Co-product treatment rules	18
3.2.1 General rules.....	18
3.2.2 Co-products from anaerobic digestion	19
3.3 Compulsory linkages	22
3.4 Conservative factor for processing steps	23
3.5 Land use change emission calculations	25
3.6 Entering links to verification evidence	26
3.7 Adapting existing default fuel chains	26
3.7.1 Wood pellet chains.....	27
4 INTERPRETING THE RESULTS	28
4.1 Module results	28
4.2 Fuel chain results	29
5 PREPARING REPORTS	30
5.1 Module reports (pdf format)	30
5.2 Project reports (pdf format)	32
5.3 Annual reports (xls format)	34

6	UPDATES TO SOFTWARE AND DEFAULT VALUES	37
7	MODULE DESCRIPTIONS	38
7.1	Units used in the <i>UK Solid and Gaseous Biomass Carbon Calculator</i>.....	38
7.2	Fuel chain – Electricity	38
7.3	Fuel chain – Heat	41
7.4	Fuel chain – Gas.....	43
7.5	Crop production	44
7.6	Harvesting, extraction and roadside processing.....	49
7.7	Drying and storage.....	50
7.8	Feedstock transport.....	52
7.9	Gas transport	54
7.10	Biomass processing (chipping, briquetting, pelleting)	55
7.11	Conversion of biomass feedstock to biogas	58
7.12	Biogas upgrading	61
7.13	Storage.....	64
7.14	Electricity production.....	66
7.15	Heat production	67
7.16	Gas injection to the national natural gas grid	68
8	GLOSSARY	71
8.1	Feedstock types	71
8.2	Biomass forms.....	73
8.3	Process types.....	75
	DRYING OF FEEDSTOCK WITHOUT ANY ADDITIONAL EXTERNAL ENERGY INPUTS. ANNEX 1: UPDATES IN CALCULATOR VERSION 2.0.....	76

Foreword

This document is the User Manual for version 2.0 of the *UK Solid and Gaseous Biomass Carbon Calculator* for operators generating electricity and electricity co-produced with useful heat. The calculator can also be used by operators generating heat and biomethane for grid injection from solid biomass or biogas, but this document focuses on the calculator features relevant to users operating under the Renewables Obligation¹.

The *UK Solid and Gaseous Biomass Carbon Calculator* contains a series of UK-defined default values for a large number of solid and gaseous biomass supply chains to electricity, heat and biomethane generators in the UK. This calculator should only be used for the “actual value” method for calculating the carbon intensity of electricity from biomass.

It is possible to amend these default supply chains using actual data or to calculate the carbon intensity of electricity, heat and biomethane based on entirely new chains created by the user. The Calculator also offers additional functionality such as showing how the total calculated emissions are split between the different supply-chain steps, helping to indicate where further cost-effective GHG reductions might be made. Finally, it is also possible to prepare summary reports that should help electricity generators in preparing their submission to Ofgem and for internal records.

Generators who want to use the “default value” method for the calculating carbon intensity of their biomass electricity should not use this Calculator, but instead refer to Ofgem’s guidance on Renewables Obligation: Sustainability Criteria². The Ofgem guidance includes details of the alternative ‘default value’ calculation process and the EU default values for certain whole biomass pathways as set out in the Renewables Obligation Order.

¹ For operators generating electricity from bioliquids the *UK Carbon Calculator* is also available to download to allow for the assessment of bioliquid fuel chains (see: <https://www.gov.uk/government/publications/biofuels-carbon-calculator>)

² Available on the Ofgem website: <https://www.ofgem.gov.uk/environmental-programmes/renewables-obligation-ro/information-generators/biomass-sustainability>

Changes to Calculator Version 2.0

As of 1st April 2014 Version 2.0, of the calculator was made available. Version 2.0 was released in two stages:

- April 2014: Version 2.0, Build 27
- January 2015: Version 2.0, Build 33

Several important changes have been made in Version 2.0 of the Calculator compared to Version 1.0. For a summary of all updates implemented in Builds 27 to 33 please refer to Annex 1. Note that Version 1.0 and its associated default values and chains are still retained within the current application and can be accessed by creating a project dating before 01/04/14.

1 Getting started

1.1 Introduction

The *UK Solid and Gaseous Biomass Carbon Calculator* software is designed to help companies calculate the carbon intensity of the electricity, heat or biomethane produced from solid biomass or biogas for the purpose of reporting under the Renewables Obligation scheme. It can also produce annual reporting tables, which should help electricity generators report the carbon intensity of their electricity to Ofgem on an annual basis.

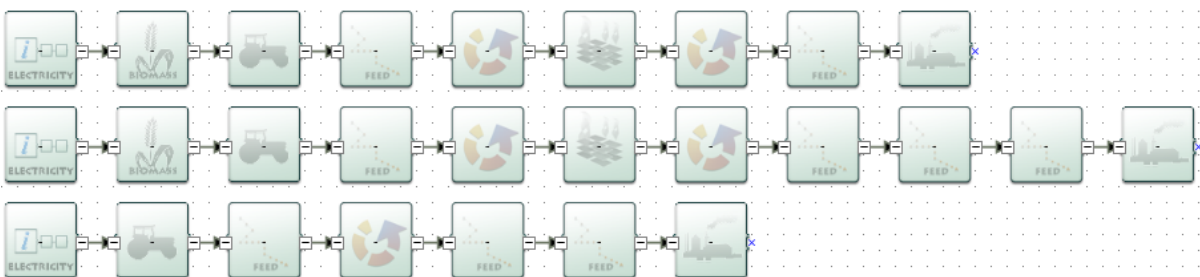
The primary aim of the software is to facilitate the use of actual data collected directly from the supply chain to calculate fuel chain carbon intensity.

The information required for calculating the carbon intensity of a consignment of fuel is entered using a graphical representation of a biomass to energy supply chain.

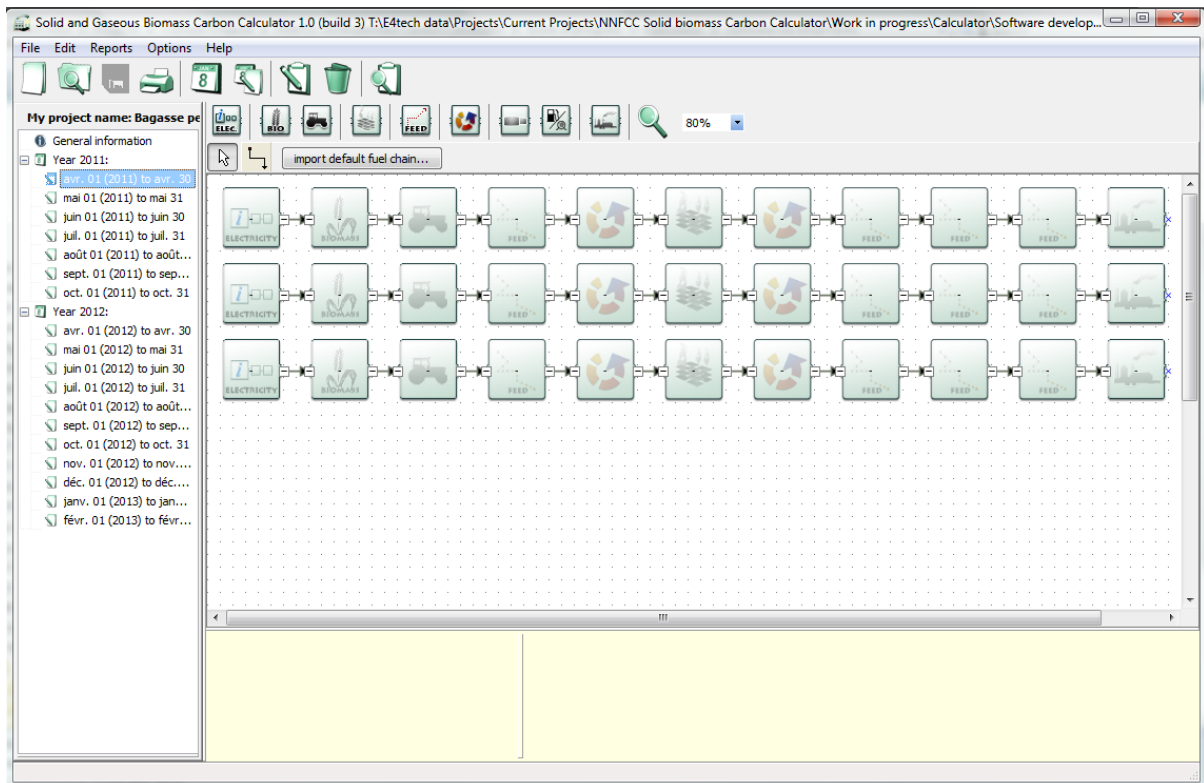


These graphical supply chains are made up of a set of pre-defined modules which contain all of the data needed to assess the GHG emissions from this step of the chain.

If several types of fuels are used during a monthly reporting period, a supply chain should be added for every consignment of fuel which you want to assess the carbon intensity.



A single *UK Solid and Gaseous Biomass Carbon Calculator* project file can be used to calculate the carbon intensity of fuels used in different months and years. If that is the case, you will see the list of months and years included in the project file on the left hand side panel. If you click on a month, the supply chains that were imported to that month are then visible on the main fuel chain screen, as in the screenshot below.



Version 2.0 of the *UK Solid and Gaseous Biomass Carbon Calculator* contains the UK-defined default values for solid and gaseous biomass chains that can be used for electricity, heat and biomethane injection to the national grid.

1.2 Information on calculation methodology and reporting requirements

The *UK Solid and Gaseous Biomass Carbon Calculator* implements the life cycle calculation methodology set out in the Renewables Obligation Order and in the Renewables Obligation: Sustainability Criteria guidance from Ofgem. Furthermore, consistency with EC-calculated biofuels and bioliquids default values has been ensured where relevant through:

- the use of the conservative factor for the processing step (see Section 3.4)
- the use of the same emission factors³ and standard values⁴ whenever appropriate

³ Emission factors refer to the life cycle GHG emissions associated with the production and transport of products and energy carriers that enter into the production of solid and gaseous biomass.

⁴ Standard values refer to data that reflect some characteristics of the products and energy carriers that enter into the production of solid and gaseous biomass, such as their lower heating value, density, etc.

Two examples of waste feedstocks (Municipal Solid Waste (MSW) and waste wood) are included in the *UK Solid and Gaseous Biomass Carbon Calculator* for illustrative purposes; it provides information on potential opportunities for further reductions in GHG emissions in the particular case of these waste-to-energy chains. It should be noted that, consistently with the EC life cycle methodology, the *UK Solid and Gaseous Biomass Carbon Calculator* does not include avoided methane emissions, which can for some waste-to-energy supply-chains reduce the GHG emissions to below zero.

Report creation functions have also been included in the *UK Solid and Gaseous Biomass Carbon Calculator*. They are available for all energy types (i.e. electricity, heat and grid injection), although reporting on carbon intensity is only required for electricity generated from solid and gaseous biomass. The following report creation functions are available in the *UK Solid and Gaseous Biomass Carbon Calculator*:

- Project reports containing information on the fuels used, their characteristics (feedstock type, feedstock country of origin, previous land use and the carbon intensity), and an overview of the actual data input to the chains.
- Module report that provide an overview of all the data used in a module.
- Annual reports, which are designed to allow direct submission to Ofgem. Please note that these reports contain more information than the minimum Ofgem requirements.

1.3 General information screen

The first screen you see when you open the *UK Solid and Gaseous Biomass Carbon Calculator* is the general information screen. Generic information about the company you are calculating the carbon intensities for can be entered here. Most of the fields on this page are optional. The only piece of information that must be provided in order to continue to the next page is the energy type.

Note: you can return to this screen at any time by clicking on 'General information' at the top of the left hand panel.

Key information which can be entered on this screen includes:

- Project name – a short description of the information can be entered in this file.

- Project description – can include more detailed information relating to this file (e.g. the scope of biomass types covered, whether the file is current or no longer being used etc.).
- Default fuel type used – select the type of biomass which you are likely to use most often within the software (you will still be able to assess the carbon intensity of other fuels).
- Default country of origin – select the country from which most of your biomass feedstock comes (e.g., the United Kingdom). If you receive feedstock from a wide range of countries or regions, select 'Unknown'. If the country of origin is not listed, select 'other.'
- Energy type – you must choose whether you want to calculate the carbon intensity of electricity, heat or biomethane for grid injection, as this will influence the information you will need to provide to the tool.
- Company data – general contact details (you can save this data and reload it in other files by clicking the 'Save company data' button).

1.3.1 Saving company information

You may save the company information provided in the General information screen by clicking 'Save company data'. The data will then automatically appear every time you open the *UK Solid and Gaseous Biomass Carbon Calculator*. Please note that you can only save one set of company information at a time.

1.3.2 Protecting files with passwords

An individual file can be protected with a password, by enabling this option within the General information screen. The following steps will enable password protection of a file. This will mean that anyone who tries to open this file will be forced to enter the password you specify before they can view or change any of the information within it. It also means that the file itself is compressed and encrypted so it cannot be read by any other software.

- Step 1 Click on 'General information' in the left hand panel.
- Step 2 Click on the button 'Protect this file with a password'.
- Step 3 Select 'Protect this project with a password'.
- Step 4 Enter the same password twice (the format of the password is up to you) and click 'OK'.

1.4 Adding new years and months

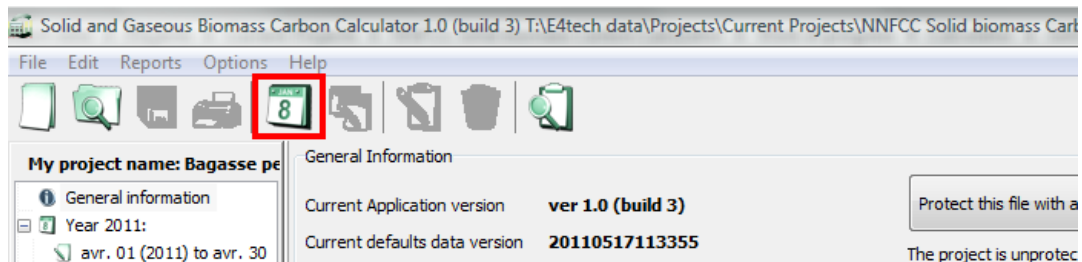
1.4.1 Adding a new year

An individual file can be used to calculate carbon intensities of fuels used in different months and years.

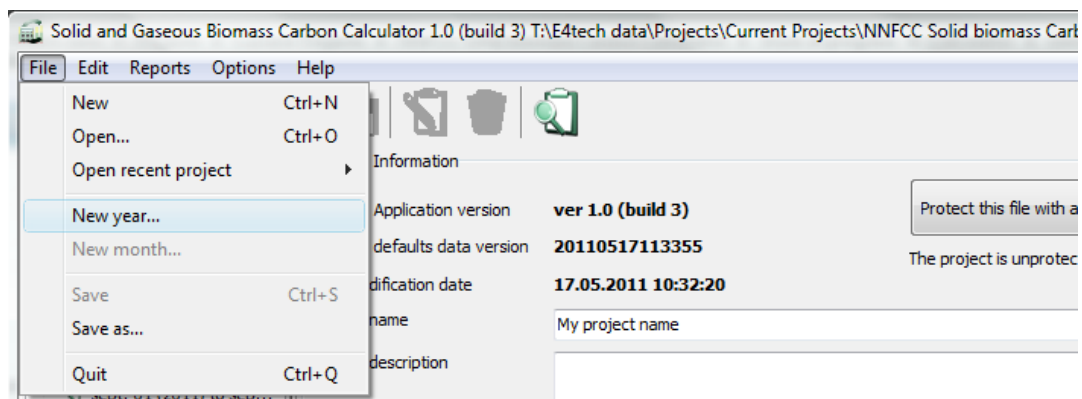
It is important to use the correct year and month because the default values used are linked to the date of the report and may change in the future. For example, the default electricity requirement for wood pelleting changes in April 2014. Both default values would in such case be retained within the software so that if you want to check your results from 2013 they are exactly the same as when you calculated them. However, if you unintentionally calculated the carbon intensity of a fuel in year 2013 in the software but for submission in 2014, the software may use the wrong default values.

To add a new year, follow the steps below.

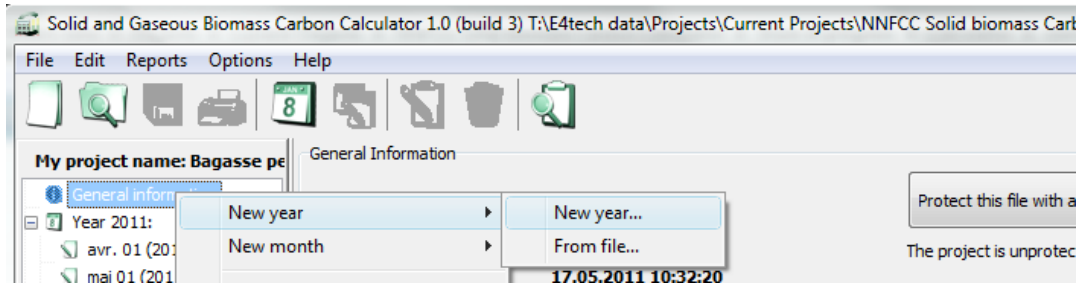
- Step 1 Click the 'Create a new year' button on the toolbar *OR* select 'New year' from the File menu *OR* right click on the left hand panel and select 'New year'.



OR



OR



Step 2 Select the year for which you would like to calculate carbon intensities.

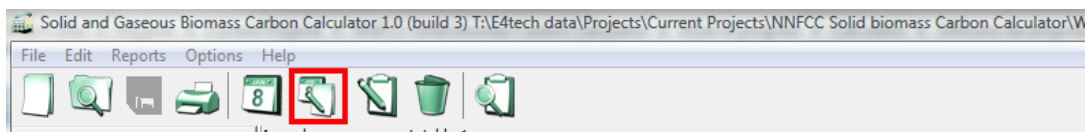
Step 3 Enter a description for the year if you require it.

Step 4 Select the first month for which you would like to calculate the carbon intensities within this year and click the 'Create' button.

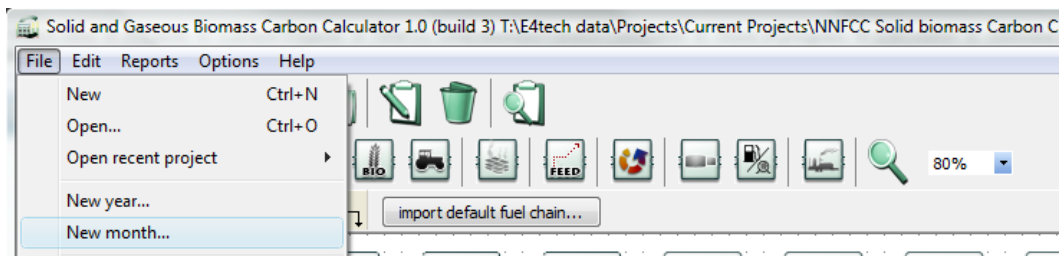
1.4.2 Adding a new month

To add a new month within an existing year, follow the steps below.

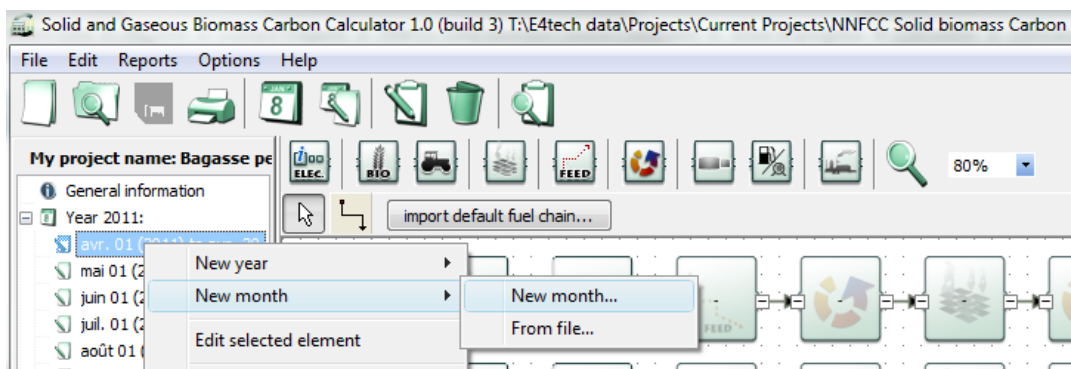
Step 1 Ensure you have the year in which you would like to add a new month selected, then click the 'Create a new month' button on the toolbar *OR* select 'New month' from the File menu *OR* right click on the left hand panel and select 'New month'.



OR



OR



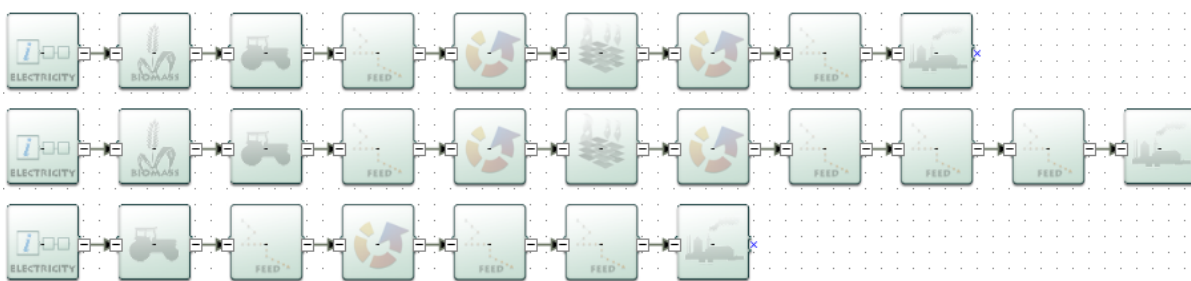
Step 2 Select the month for which you would like to calculate carbon intensities and click the 'Create' button.

2 Adding a new fuel chain

The information required to calculate the carbon intensity of a new type of biomass is entered using a graphical representation of a biomass supply chain.



These graphical fuel chains are made up of a set of pre-defined modules which contain all of the data needed to assess the GHG emissions from this step of the chain. When the tool is used for reporting purposes, a chain must be added for every consignment of biomass reported to Ofgem.



These chains can be expanded and/or reduced by clicking on the '+' / '-' sign as detailed below.

On the right side of a module in the *Calculator*, you can see a small square containing either the sign '-' or '+', as is shown on the picture below.



The '-' sign means that the chain is expanded – i.e. you can see all the modules contained in the chain after the specific module.

The '+' sign means that the chain is reduced – i.e. you cannot see any modules after the specific module. However these modules have not been deleted – they will reappear if you click on the '+' – they have been condensed into one single module.

2.1 Loading a default fuel chain and adding actual data

When loading a default fuel chain, the approach should be to start from one of the default fuel chains already included in the *UK Solid and Gaseous Biomass Carbon Calculator* database.

To import such a chain, follow the steps below.

Step 1 Click the 'import default fuel chain' button on the toolbar

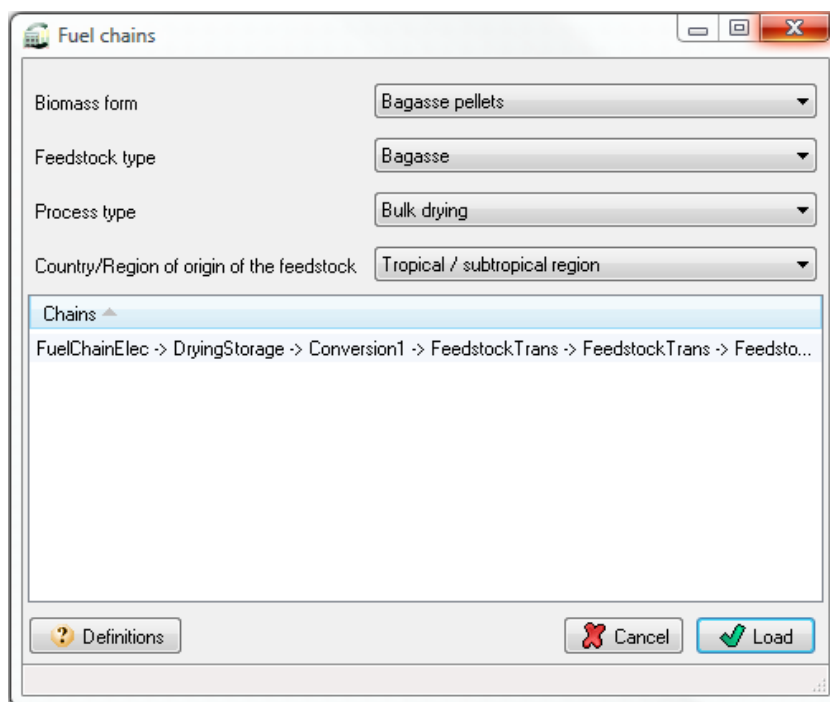


Step 2 Select the form of biomass used in the power plant (e.g., charcoal, wood pellets, straw bales, etc)⁵, the type of feedstock from which that biomass form has been produced, (e.g., forestry residues, wheat, sugar cane, etc.), the type of process (e.g., natural drying, bulk drying, continuous drying) and the country/region of origin. Then click 'Load'.

- If you cannot select the combination of fuel type, feedstock, and drying process that you require, it is because there is no default fuel chain currently defined for this supply chain. If this is the case, it is possible to create a new fuel chain from scratch (see section 2.3).
- If the structure of the default fuel chain for the combination you have selected does not represent your chain, it is possible to load a similar fuel chain and then adapt it using the different elements at the top of the tool bar (see section 2.2).
- A list of definitions of the terms used in the fuel chains is available by clicking 'Definitions'.⁶

⁵ If you are calculating the carbon intensity of biomethane for injection to the national grid, you will only have one choice of feedstock form, i.e. biomethane.

⁶ The definitions spreadsheet also indicates whether feedstock types are considered to be wastes or residues [W/R] or co-products [C].



Step 3 Select the relevant module and enter the actual data for this supply chain. See Section 3 for more details on entering actual data.

2.2 Adding or removing modules from an existing fuel chain

In some situations you may wish to add or remove a module from an existing fuel chain, for example:

- A default fuel chain might only include one module for feedstock transport (e.g., by truck); however, your fuel chain might involve two transport steps: firstly a short distance by truck, then a longer distance by rail.
- A default fuel chain might include a drying step that is not required in your fuel chain, and therefore needs to be removed.

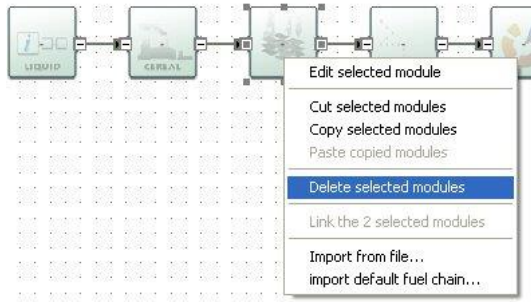
The following steps present how to add or remove a module from an existing fuel chain.

Step 1 Click the 'import default fuel chain' button on the toolbar.

Step 2 Select the form of biomass used, the feedstock from which the biomass has been produced, the type of drying process and the country/region of origin. Then click 'Load'.

If you want to delete a module:

Step 3 Select the module you want to delete by clicking on it once. Delete it either by using the 'Delete' key on your keyboard *OR* by right clicking on the module and selecting 'Delete selected modules'. Click 'yes' when asked if you really want to delete the selected elements.



Step 4 The fuel chain will now be broken – i.e. there will be two modules which are not connected by a small black arrow. You can reconnect these two modules in two ways:

- by clicking on the small X (the 'connector') in the middle of the right hand side of the first module and, holding the mouse button down, drag the arrow to the connector on the second module to which you wish to connect.
- by selecting the two modules you wish to connect, right clicking on one of the modules and selecting the options "Link the 2 selected modules".

The connector will have an arrowhead if it is correctly formed. If no arrowhead appears, it is either because you have not dragged the line precisely to the connector on the second module, or because these two types of module are not allowed to connect (see Table in Section 2.3 for connection rules) – check that the fuel chain you are building is accurate and permitted.

Correct:



Incorrect:



Step 5 Check all downstream modules, particularly those of the same type to ensure that the default values provided are still representative of your chain. For example, transport modes and distances, countries in which conversion steps take place, etc.

If you want to add a new module:

Step 3 Create some space for the new module (e.g., by selecting and dragging to the right the modules which will be on the right of the new module).

Step 4 Delete the arrow which connects the two modules in between which you wish to insert a new module.

Step 5 On the toolbar, click once on the type of module you wish to add to the fuel chain (e.g., 'Feedstock transport') then click the main screen where you want the new module to appear.

Step 6 Connect the new module to the remaining parts of the fuel chain. You can connect two modules in several ways:

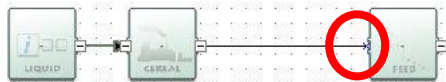
- by clicking the small X (the 'connector') on the right hand side of the first module and, holding the mouse button down, dragging the arrow to the connector on the second module to which you wish to connect.
- by selecting the two modules you wish to connect, right clicking on one of the modules and selecting the options "Link the 2 selected modules".

The line will have an arrowhead if it is correctly formed. If no arrowhead appears, it is either because you have not dragged the line precisely to the connector on the second module, or because these two types of module are not allowed to connect (see Table in Section 2.3 for connection rules) – check that the fuel chain you are drawing is accurate.

Correct:



Incorrect:



Step 7 Enter the actual data you have for this module.

Step 8 Check all downstream modules, particularly those of the same type to ensure that the default values provided are still representative of your chain. For example, transport modes and distances, countries in which conversion steps take place, etc.

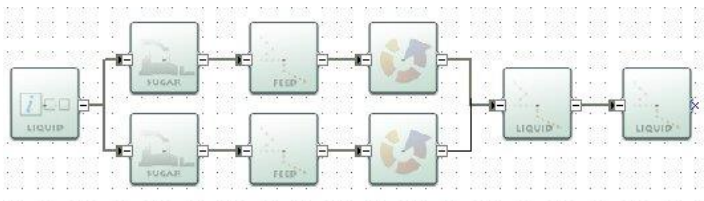
2.3 Constructing a completely new fuel chain

The software can be used to construct an entirely new fuel chain (e.g., for a new type of biomass), although it is almost always easier to edit an existing default fuel chain. This is because most of the data in the fuel chain would need to be provided from actual data sources, rather than default values (emissions factors for fertilisers, fuels, electricity and chemicals are some exceptions).

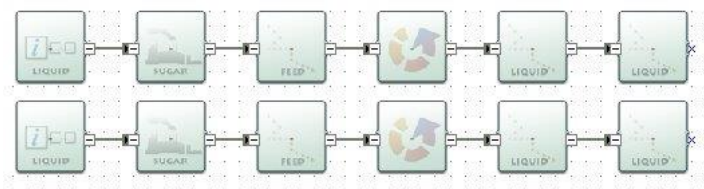
There are some rules which must be followed when adding completely new fuel chains:

- Each fuel chain must start with the 'Fuel Chain – Electricity', 'Fuel Chain – Heat' or 'Fuel Chain – Gas' Module. For a new type of biomass not included in the *Calculator*, "other" should be selected for feedstock type and/or form in the fuel chain module.
- The modules must be mapped, from left to right in the same sequence as the different processing steps occur – e.g., starting with "crop production", followed by "harvesting, extraction and roadside processing", then feedstock transport, etc.
- All modules must be connected with a small black arrow. If these arrows are not present, the software will not be able to calculate the carbon intensity of the fuel chain.
- It is not possible to have two parallel streams in a fuel chain, you could, however, represent this situation with two separate fuel chains.

Incorrect:



Correct:



- Not all modules can be connected to each other. This ensures simple errors cannot be made when building new fuel chains. The table below indicates which modules can be connected – when the module in column 1 is the first of two modules (i.e. the first in a sequence when reading from left to right) it can be connected to all of the modules listed in column 2.

First module...	...can be connected to these modules
Fuel chain – Electricity	Crop production, Harvesting, Drying and storage, Feedstock transport, Biomass processing, Biomass processing to gas, Power plant
Fuel chain – Heat	Crop production, Harvesting, Drying and storage, Feedstock transport, Biomass processing, Biomass processing to gas,

	Power plant
Fuel chain – Gas	Crop production, Harvesting, Feedstock transport, Biomass processing, Biomass processing to gas
Crop production	Harvesting, Drying and storage, Feedstock transport, Biomass processing, Biomass processing to gas, Power plant
Harvesting	Drying and storage, Feedstock transport, Biomass processing, Biomass processing to gas, Power Plant
Drying and storage	Feedstock transport, Biomass processing, Biomass processing to gas, Power plant
Feedstock transport	Drying and storage, Feedstock transport, Biomass processing, Biomass processing to gas, Power plant
Gas transport	Gas transport, Gas processing, Grid injection, Power plant
Biomass processing	Drying and storage, Feedstock transport, Biomass processing, Biomass processing to gas, Power plant
Biomass processing to gas	Gas processing, Gas transport, Grid injection, Power plant
Gas processing	Gas processing, Gas transport, Grid injection, Power plant
Storage	Drying and storage, Feedstock transport, Biomass processing, Biomass processing to gas, Power plant
Grid injection	
Power Plant	

To add a new module to the screen, follow the steps below.

- Step 1 On the toolbar, click once on the type of module you wish to add to the fuel chain (e.g., 'Feedstock transport').
- Step 2 Click the main screen where you want the new module to appear.

To connect two modules, follow the steps below.

- Step 1 Click the small X (the 'connector') on the right hand side of the first module and, holding the mouse button down, drag the arrow to the connector on the second module to which you wish to connect.

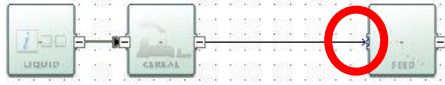
OR

Select the two modules you wish to connect, right click on one of the modules and select the options "Link the 2 selected modules".

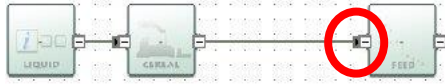
- Step 2 Check to see that the line you have added has an arrowhead. If no arrowhead appears it is either because you have not dragged the line precisely to the connector on the second module (try Step 1 again) or because you have tried to connect two modules which not allowed to be connected (see Table above) – check that the fuel chain you are

drawing up is accurate.

Incorrect:



Correct:



Step 3 Once you have defined the whole fuel chain, you can begin entering actual data – see Section 3.

3 Entering actual data

3.1 Entering values

Once you have loaded a fuel chain (see Section 2) you can begin entering actual data. See Section 7 for descriptions of the fields in each module.

In addition to the simple steps below, please also refer to the information given in Sections 3.2 to 3.5.

- Step 1 Double click on the module in which you want to enter actual data.
- Step 2 Click the field in which you want to enter actual data.
- Step 3 Replace the default value with your actual data (changing the units, if appropriate, by selecting the new units from the units drop down box).
- Step 4 Enter any other actual data for this module and then click 'Close' to return to the main fuel chain screen.

Points to note about entering actual data:

- Tables of data such as the fertiliser inputs, fuel inputs, chemical inputs, etc. can be edited using the same process as outlined above. However, if you wish to add or delete a row, you will need to use the buttons which appear above the table (the green plus symbol adds a new row, and the red cross deletes the selected row).
- If a warning symbol appears after you have entered some actual data, hover the mouse over it to see the warning message. The message may say 'The input you have provided is different from the default value by more than xx%. Please check that your value is correct' (where xx is a number), which is an indication that the value you have entered is smaller or larger than what might normally be expected. This does not lead to any program error – i.e. the program will still perform the usual calculations. However, you may want to double check the value entered is correct.
- The message may also say 'please also provide actual data for [name of another field]' – this is known as a compulsory linkage, see Section 3.2 for further details.
- You can reset a field to the default value by right clicking on the field and selecting 'Reset to default value'. If you want to reset a table to its original default value, use the circular arrow button above the table. Note that you can only reset the whole table, not

an individual row. You can reset **all** data in a module by clicking on the 'Reset' button which appears at the bottom of each module.

- Actual data stored in a module is shown in bold text.

3.2 Co-product treatment rules

3.2.1 General rules

The European Commission Report on sustainability requirements for the use of solid and gaseous biomass sources in electricity, heating and cooling, and the Renewable Obligation Order set out the life cycle GHG emission calculation methodology that should be followed when assessing the GHG emissions of electricity and heat under the RO

This methodology defines, among other rules, how to allocate emissions when a process is producing several co-products. The allocation method depends on the type of co-products and is set out in the following paragraphs. For more information, please refer to the documents above and to the Ofgem guidance on solid and gaseous biomass for electricity production.

If one of the co-products is useful heat, then the emissions should be allocated between the different products by taking into account the energy content of all the co-products and the temperature of the useful heat based on the following formula:

$$A_i = \frac{E}{\eta_i} \left(\frac{C_i \eta_i}{C_i \eta_i + C_h \eta_h} \right)$$

Where: A_i	=	Allocated GHG emissions at allocation point to co-product, i
E	=	Total GHG emissions up to allocation point
η_i	=	The fraction of co-product, measured in energy content, defined as the annual amount of co-product produced divided by the annual energy input
η_h	=	The fraction of heat produced together with other co-products, defined as the annual useful heat output divided by the annual energy input
C_i	=	Fraction of exergy in the energy carrier (else than heat), equal to 1
C_h	=	Carnot efficiency (fraction of exergy in the useful heat)

The Carnot efficiency, C_h , is calculated as follows:

$$C_h = \frac{T_h - T_0}{T_h}$$

Where: T_h = temperature of the useful heat, measures in Kelvin at point of delivery

T_0 = Temperature of surroundings, set at 273 Kelvin.

For $T_h < 150^\circ\text{C}$, C_h is set to 0.3546.

If none of the co-products are useful heat, the emissions up to the point of allocation should be proportioned between the main product and co-products based on their respective calorific values. This is outlined in the steps below:

Step 1: Calculate or look-up the calorific values of all products exported from the conversion plants (i.e. both the main exported product and all the co-products) – each of these values should be expressed in MJ/kg of product.

NOTE: calorific values of common co-products are part of the list of standard emission factors.

Step 2: Calculate the total energy contained in each product exported from the plant (the main product and the co-products) by multiplying the amount of product (expressed in kg of product/kg of main product) by its calorific value. This gives the energy content of each exported product per kg of main product (MJ/kg of main product).

Step 3: Sum all of the values in Step 2 to give the total energy content of products exported from plant (expressed in MJ/kg of main product).

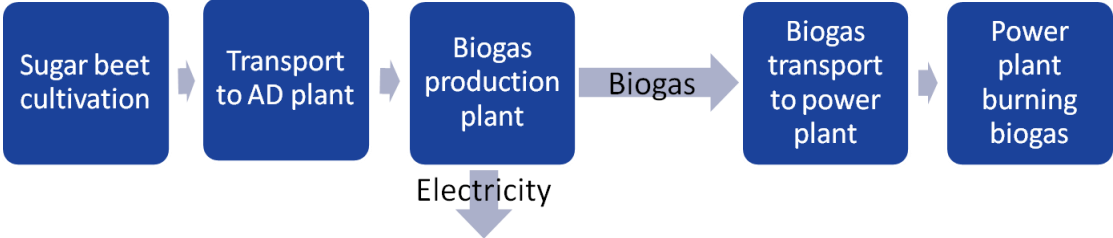
Step 4: For a particular product, divide the amount of product per kg of main product (Step 2) by the total energy content of products exported from plant (Step 3). This gives the proportion of emissions which should be allocated to that product.

3.2.2 Co-products from anaerobic digestion

When biogas is produced by anaerobic digestion (AD), part of the biogas is usually burned in a local CHP plant to produce the heat and electricity required in the biogas production process. Usually the CHP unit produces more electricity than needed by the system, and thus some electricity is exported back to the grid. The following

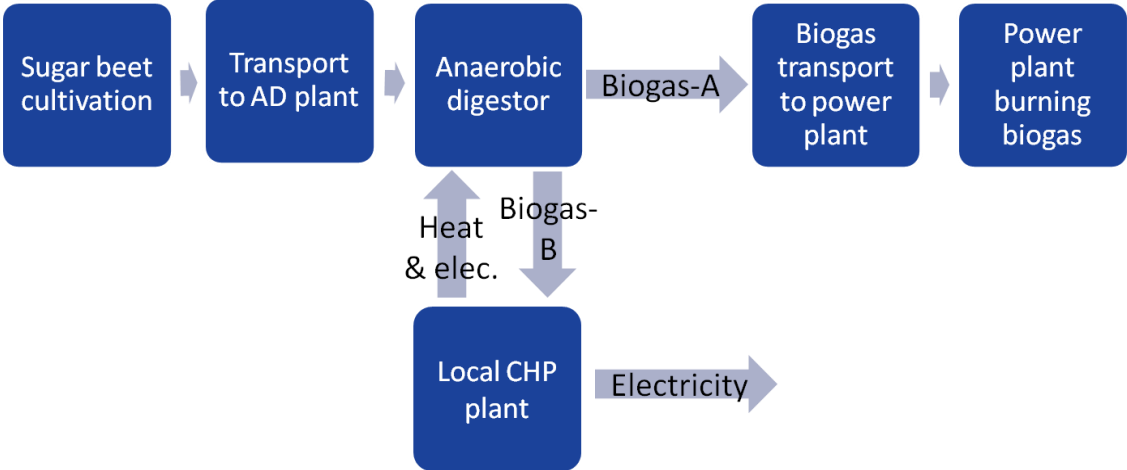
paragraphs explain how to calculate the carbon intensity of the final biogas, when some of the biogas is used to power the production process itself.

There are two ways of visualising this process, as represented below.



This first figure shows the biogas production plant as a black-box, from which exit both biogas and electricity. In this view, there is no heat co-produced; the only co-product is electricity. Following the ROO, upstream GHG emissions should then be allocated between biogas and electricity based on their energy contents.

However the process could also be visualised as follows:



In this second figure, the biogas production plant is deconstructed into 2 modules:

- one pure AD biogas production module which produces 2 streams of biogas: biogas-A which exits the anaerobic digestion module and is transferred to a power-plant and biogas-B which is used in the local CHP for heat and electricity production; and
- one local CHP module which produces the heat used in the AD biogas production module and some electricity from biogas-A.

In this case, the AD unit has two co-products: biogas-A and biogas-B and two energy inputs: heat and electricity from the biogas CHP unit. In terms of co-product treatment, upstream GHG emissions should

be allocated between biogas-A and biogas-B on an energy content basis and the heat and electricity inputs should be taken into account through the use of their emission factors.

The default values included in the UK Solid and Gaseous Biomass Carbon Calculator are calculated based on the first approach set out above (i.e. biogas production = black box). The treatment of the co-products is thus to allocate emissions between biogas and electricity on an energy content basis.

However, for generators who want to calculate their actual carbon intensity based on the second approach, the steps to follow have been laid out below.

- Step 1 Build or load a biogas chain.
- Step 2 Open the Biogas production plant module, by double clicking on it.
- Step 3 Insert the plant yield (i.e. the amount of biogas that is being transferred to the next supply chain step) in the 'Plant yield' field (field number 1 in the screen shot below).
- Step 4 Enter the amount of electricity used by the biogas production unit in the 'Amount of electricity used' field (field number 2 in the screen shot below)
- Step 5 Enter the amount of heat used in the biogas production unit in the 'Fuel used per MJ of output' (field number 3 in the screen shot). For more information on how to enter actual data, please refer to Section 3.1.
- Step 6 You now need to calculate the electricity and heat emission factor, i.e. the GHG emissions associated with the production of the electricity and heat used. This calculation cannot be performed in the *UK Solid and Gaseous Biomass Carbon Calculator*.

In an Excel spreadsheet, enter:

- the default value for the biogas used to produce the electricity (in g CO₂e / MJ biogas) – E
- the electricity efficiency of the CHP unit (in MJ electricity / MJ biogas) – η_e
- the thermal efficiency of the CHP unit (in MJ heat / MJ biogas) – η_h
- the temperature of the useful heat at delivery point (in Kelvin) – T_h
- the temperature of the surroundings (in Kelvin) set at 273 Kelvin – T_0

- Step 7 In the Excel spreadsheet, perform the following calculation:

$$\text{Electricity emission factor} = \frac{E}{\eta_e} \times \frac{\eta_e}{\eta_e + \frac{T_h - T_0}{T_h} \times \eta_h}$$

$$\text{Heat emission factor} = \frac{E}{\eta_h} \times \frac{\frac{T_h - T_0}{T_h} \times \eta_h}{\eta_e + \frac{T_h - T_0}{T_h} \times \eta_h}$$

Step 8 In the *UK Solid and Gaseous Biomass Carbon Calculator*, enter the emission factors in the fields 'Electricity emission factor' and in the column 'Emissions factor' in the fuel information table (fields number 4 and 5 in the screen shot below).

The screenshot shows the 'Basic data' and 'Plant inputs' sections of the calculator. The 'Plant yield' field is set to 1316.500 MJ(output)/Tonnes(input). The 'Amount of electricity used' is 0.00 kg(Electricity)/MJ(output). The 'Electricity emissions factor' is 0.129 kg(CO2e)/MJ(electricity). The 'Fuel used per MJ of output' table has a header row with columns: Type, Description, Use, Unit, Emissions factor, Unit, and Total emissions. A red box highlights the 'Emissions factor' column in the table.

Step 9 Fill in any other field that you need to take into consideration (e.g., methane losses). If the data has been entered correctly, the subtotals should show a value.

3.3 Compulsory linkages

If a warning symbol appears after you have entered some actual data, which says 'please also provide actual data for [name of another field]' then you have entered some data for a field which has a 'compulsory linkage'.

Compulsory linkages are defined between two inputs which are often linked in some way – for example, a crop yield is often linked to the rate of nitrogen fertiliser application, so if a higher crop yield is reported then there is a reasonable chance more nitrogen fertiliser

has been applied. To prevent 'cherry-picking' (i.e. selective use of actual data and single default values) the software warns the user when they have entered actual data for a field which has a compulsory linkage. When this occurs, make sure that actual data is also entered for the second field.

The following table summarises the current compulsory linkages.

Input one	Input two
Crop production	
Crop yield	Nitrogen fertiliser application rate
Nitrogen fertiliser application rate	N ₂ O emission rate from agricultural soils
Conversion	
Efficiency	Any co-product yield
Efficiency	Fuel or electricity use
Electricity or heat exported	Fuel use

The compulsory linkage between nitrogen fertiliser application rate and soil N₂O emissions is not signalled by a warning sign but automated in the program. For all fuel chains the N₂O emission rate was calculated using the IPCC Tier 1 methodology based on the nitrogen fertiliser application rate. For all chains, when the fertiliser input table is edited in the *UK Solid and Gaseous Biomass Carbon Calculator*, the N₂O emission rate is automatically recalculated based on the IPCC Tier 1 approach and the 'new' N fertiliser application rate.

3.4 Conservative factor for processing steps

In the methodology for calculating default values for fuels derived from biomass, the European Commission takes a conservative approach by multiplying the processing step by a factor of 1.4⁷, thereby increasing emissions from processing. This conservative approach to the processing step of default values is continued in the *UK Solid and Gaseous Biomass Carbon Calculator*.

In the case of biomass to energy, the processing step refers to any chipping, pelleting or briquetting steps and any drying and storage steps that do not happen at cultivation or harvesting site (i.e. the

⁷ See European Commission Communication on voluntary schemes and default values in the EU biofuels and bioliquids sustainability scheme (2010/C 160/01)

processing modules are usually separated from the 'Crop production' and/or 'Harvesting' modules by a 'Feedstock transport' module). However, if actual data is used for the modules in the processing step, it is possible for this conservative multiplier to be removed.

The conservative factor can only be removed from the conversion modules for which actual data is provided for *all* of the following parameters:

- Plant Yield/Module Efficiency
- Electricity consumption
- Fuel consumption (if applicable)
- Chemical inputs (if applicable)
- Co-product yield (if applicable)

The conservative factor can only be removed from the drying and storage modules that form part of the processing step and for which actual data is provided for *all* of the following parameters:

- Module efficiency
- Electricity consumption (if relevant)
- Fuel consumption (if relevant)
- Moisture content after drying

This rule applies to each conversion, drying and storage module individually in the case that there is more than one.

Follow the steps outlined below to remove the conservative factor from a conversion module.

- Step 1 Double click on a 'Biomass conversion', 'Biogas production plant', 'Biogas upgrading to biomethane', 'Drying and storage', or 'Storage' module that you consider to be part of the processing step.
- Step 2 Provide actual values for all the relevant input data required in the module. Refer to the list of relevant inputs described in the paragraph above.
- Step 3 At the end of the module, click on 'All data reported in this module are actual data'.

The conversion factor of 1.4 will then be removed.

Please note that if the conversion factor was already showing '---' before you clicked on 'All data reported in this module are actual data', then the module you have opened is not considered part of the

processing step.

3.5 Land use change emission calculations

The *UK Solid and Gaseous Biomass Carbon Calculator* implements the land use change emissions calculations as described in the RED and the European Commission Decision of June 2010 on guidelines for the calculations of land carbon stock⁸, and the implementation of this legislation into the Renewables Obligation Order.

As a result of this legislation, it is required that if there has been a change of use on the land from which the biomass feedstock is sourced, the emissions associated with this land use change should be taken into consideration in the calculation of the carbon intensity of the consignment of biomass.

As a default, the *Calculator* assumes that no land use change has taken place, except in the case that clear felled virgin forest is used as the feedstock⁹. However, if you are reporting a land use change, you must include the emissions due to that land use change in your carbon intensity and GHG emission saving calculations.

To determine whether there has been a change in the use of the land from which the biomass feedstock is sourced, you must determine:

- The land cover in January 2008 within the following categories: forest land, grassland, annual cropland, wetlands, settlements and perennial cropland
- The current land cover within the same categories as above

If there is a change in category, land use change emissions must be included in the carbon intensity calculations.

In the *Calculator*, there are two different approaches to calculating emissions from land use change (where land use change has occurred):

- Provide an actual estimate of the annualised emissions due to land change
- Provide the required information under the section 'Emissions from changes in land carbon stocks' in the Crop Production

⁸ Commission Decision of 10 June 2010 on guidelines for the calculation of land carbon stocks for the purpose of Annex V to Directive 2009/28/EC (2010/335/EU)

⁹ For clear felling, land use change emissions will always take place and so the default will be that the land was forested area on 1 Jan 2008.

Module to determine the carbon stocks of the previous and actual land use and the emissions associated with the land use change.

Carbon stocks are estimated as the total of soil organic carbon and above and below ground vegetation carbon stock. These are determined based on information on land management practice, inputs to land, climate region, soil type, domain, land use type, ecological zone and continent from look-up tables provided in the EC decision and available on the EU Transparency Platform. Depending on the land use, not all of these information pieces are necessary, and the *UK Solid and Gaseous Biomass Carbon Calculator* will take you through the pieces of information you need to provide depending on the previous information selected. See the screen shot below for an example.

Emissions from changes in land carbon stocks

No change in land use or land carbon stock
 Use actual data for land use change emissions:
 Use the default methodology to calculate emissions from land use change

Additional information on land use

	in January 2008	Actual
Land use in January 2008	Grassland	Annual crop
Land management practice	Nominally managed	Full-tillage
Input to land	Medium	High without manure
Climate Region	Boreal, dry	
Soil type	High activity clay soils	
Domain	Not applicable	
Land use type	Not applicable	Not applicable
Ecological zone	Not applicable	Not applicable
Continent	Not applicable	Not applicable
Carbon stock	264.91 Tonnes(CO2e)/ha	207.29 Tonnes(CO2e)/ha

3.6 Entering links to verification evidence

All actual data used must be verifiable. You may wish to record, in the field at the top of the module 'Details and links to verification evidence' cross references to reports or other evidence supporting the claimed actual data.

3.7 Adapting existing default fuel chains

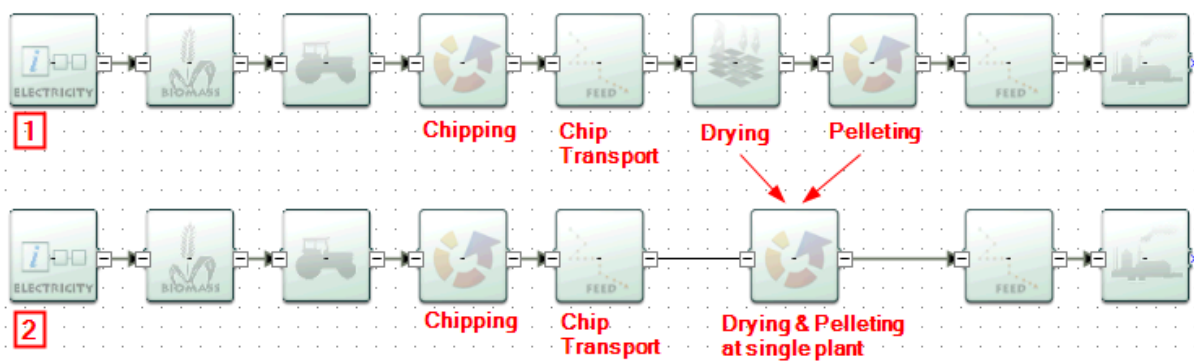
Default fuel chains are provided for many common biomass feedstock/fuel supply routes. Each default chain is deconstructed into modules which represent the principle stages of typical supply chains (e.g. cultivation > harvesting > chipping > chip transport > drying >

pellet production > etc). However, not all supply chains for the same fuel will follow the same configuration of modules, and users are encouraged to adapt the default fuel chains as appropriate to reflect their own supply chains (or alternatively, build a supply chains from scratch).

For instance, a fuel chain may be adapted by a user to reflect a supply chain in which several processing steps are combined into a single plant (e.g. chipping, drying and pelleting), and only aggregated fuel use data is available. In this case it is acceptable for users to adapt an existing default chain to include a single, aggregated 'biomass conversion' module for the plant which accounts for all inputs. An example of this is presented below.

3.7.1 Wood pellet chains

The default fuel chains for wood pellets separate the principle stages of the supply chain into disaggregated modules (see fuel chain 1 below). This means that, for example, the default value for 'amount of electricity required' in the pelleting module represents only the electricity requirements for grinding, pelleting and cooling (i.e. no drying inputs are included in this module). It is recognised that often a generator will only have access to aggregated data on energy inputs to a single processing plant, which may combine drying, pelleting and other processes. If this is the case, the user can adapt the chain as shown in fuel chain 2 below. In this way they can enter the aggregated data into the 'drying and pelleting at single plant' module. When adapting fuel chains in this way however, users must ensure that the actual moisture content of the incoming feedstock is specified in the previous 'biomass conversion' module (the 'chipping' module in this example), and all process inputs are accounted for.



4 Interpreting the results

4.1 Module results

All modules, except for the 'Fuel chain' modules, the 'Power plant' module and the 'Gas injection to the grid' module (i.e. the first and last modules in a fuel chain), show four intermediate results:

- Total for the module in kg CO₂e / t output if the output product is solid or g CO₂e / MJ output if the output product is gaseous

This is the total GHG emissions of the module alone, after multiplication by any allocation factor and conservative factor. Note that 'output' in this case refers to *tonnes of output of **the product from that particular module*** rather than *tonnes of final fuel product*. For example, for a chipping module the 'Total for this module' is in units of kg CO₂e / t(wood chips).

- Contribution of the module to the fuel chain in kg CO₂e / t fuel if the output product is solid or g CO₂e / MJ fuel if the output product is gaseous

This is the total GHG emissions of the module as integrated into the chain. It is calculated by taking the 'total for this module' and dividing it by any subsequent module efficiency, plant yield and allocation factor.

- Percentage contribution to chain

This represents the contribution of the module to the total fuel chain GHG emissions.

- Total emissions up to the module in kg CO₂e / t output if the output product is solid or g CO₂e / MJ output if the output product is gaseous

This is the total GHG emissions of all the modules upstream of the specific module and including the specific module. It is calculated by dividing the 'total emission up to this module' of the previous module by the module efficiency or plant yield of the module looked at, multiplying it by the allocation factor of that module is relevant, and adding the 'total for this module' of the module looked at. Note that once again 'output' in this case refers to *tonnes of output of **the product from that particular module*** rather than *tonnes of final fuel product*.

4.2 Fuel chain results

The 'Fuel chain Electricity', 'Fuel chain Heat' and 'Power plant' modules show the final results of a fuel chain, including:

- The fuel carbon intensity in kg CO₂e / t fuel if the fuel is solid and in g CO₂e / MJ fuel in all cases

The fuel carbon intensity is the GHG emissions associated with the biomass fuel burned in the power plant to produce the electricity and/or heat.

- The Electricity or Heat carbon intensity (whichever is relevant) in g CO₂e / MJ electricity or heat and in kg CO₂e / MWh electricity or heat

The electricity or heat carbon intensity is the GHG emissions associated with the electricity or heat produced from the biomass fuel.

Please note the following:

- No electricity or heat carbon intensity will be calculated unless the electricity or heat efficiency has been provided in the Fuel chain Electricity or Fuel chain Heat module.
- The electricity or heat carbon intensity does only consider GHG emissions associated with the production and transport of the biomass fuel. No GHG emissions are associated with the combustion of the biomass.
- The GHG saving in the case of electricity chains.

The GHG saving is calculated based on the electricity carbon intensity and on the fossil electricity comparator as defined in the ROO.

Please note the following:

- No GHG saving will be calculated unless the electricity and heat efficiency (if relevant) has been provided in the Fuel chain Electricity module.

5 Preparing reports

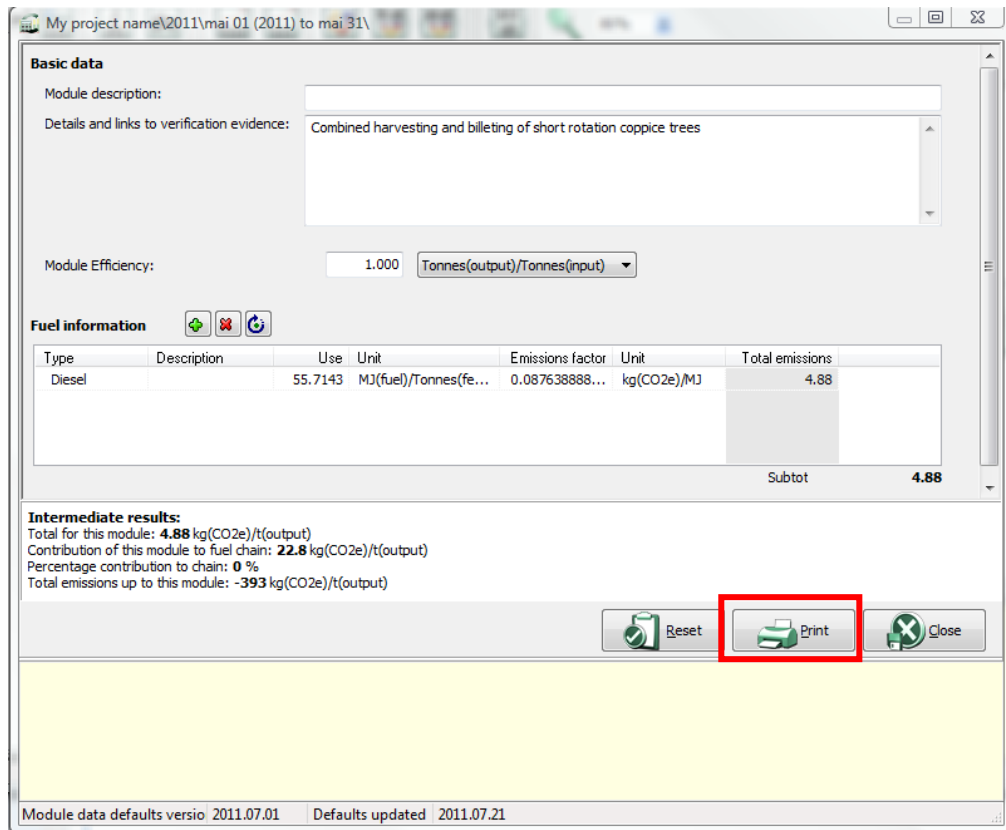
Report creation functions have also been included in the *UK Solid and Gaseous Biomass Carbon Calculator*. They are available for all energy types (i.e. electricity, heat and grid injection), although reporting on carbon intensity is only required for electricity generated from solid and gaseous biomass. The following report creation functions are available in the *UK Solid and Gaseous Biomass Carbon Calculator*:

- Module reports that provide an overview of all the data used in a module.
- Project reports containing information on the fuels used, their characteristics (feedstock type, feedstock country of origin, previous land use and the carbon intensity), and an overview of the actual data input to the chains.
- Annual reports, which were designed to allow direct submission to Ofgem. Please note that these reports contain more information than the minimum Ofgem requirements.

5.1 Module reports (pdf format)

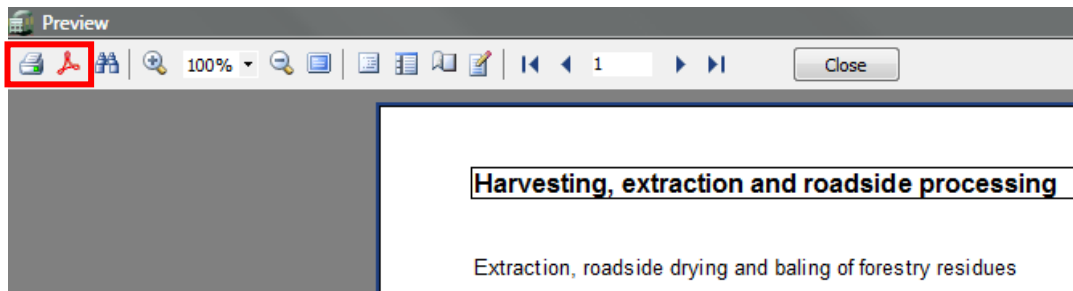
Follow the steps outlined below to create a module report.

- Step 1 Double click on a module (for example, the crop harvesting module).
- Step 2 Make all the changes you wish to in this module (for example, enter actual values for the fuel information).
- Step 3 Click on the "Print" button at the bottom right of the module.



Step 4 To print the report, click on the print symbol at the top left corner of the window.

To save the PDF report, click on the Adobe symbol at the top left corner of the window.



Step 5 If you are generating a PDF file, you will now be given the option to change various parameters for this PDF file. If you just want to export a standard PDF file simply click 'OK', you will then be given the option to name the file and specify a location for it.

Please note that this report creation function will only work if you have an Adobe reader installed on your computer. To install such a reader, please go to the following website:

<http://get.adobe.com/uk/reader/otherversions/>.

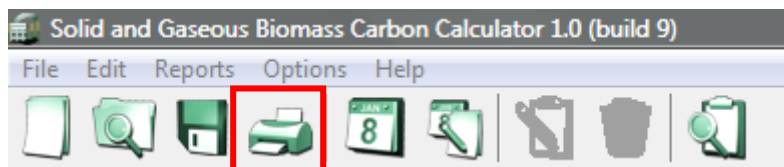
5.2 Project reports (pdf format)

Project reports in the *UK Solid and Gaseous Biomass Carbon Calculator* contain information on all the fuel chains added by the generator over a time period specified by the generator. There are three sections in a project report that the generator can choose whether to include:

- Summary report
- Detailed report
- Data report

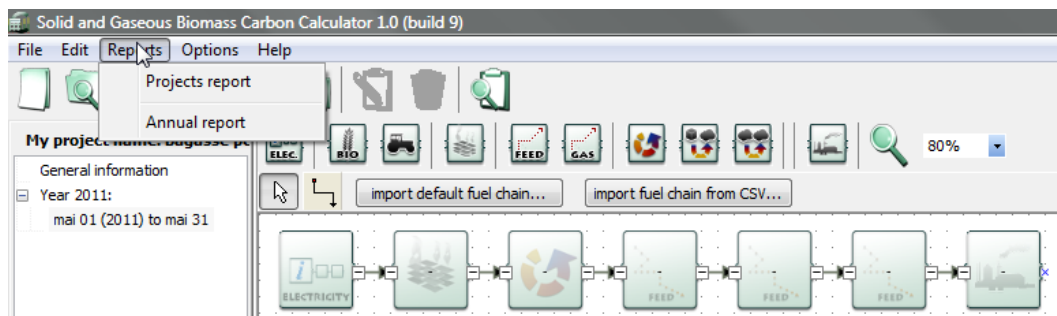
Follow the steps outlined below to create a project report.

Step 1 Click on the “Print” symbol in the top left corner of the *UK Solid and Gaseous Biomass Carbon Calculator*

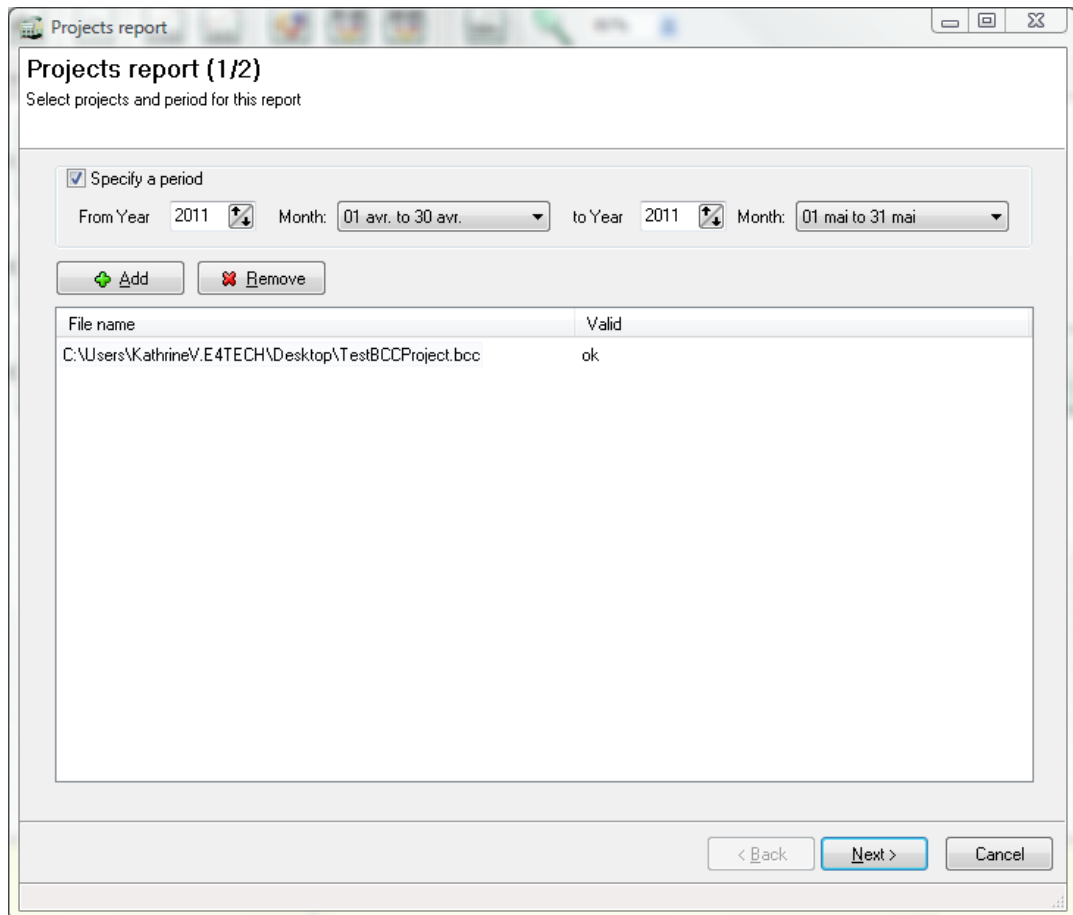


OR

Select “Projects report” in the “Reports” menu.



Step 2 Specify the time period you would like your project report to cover by ticking the box next to “Specify a period”, then select the first year and month you would like to include in the report, and then select the last year and month you would like to include in the report.

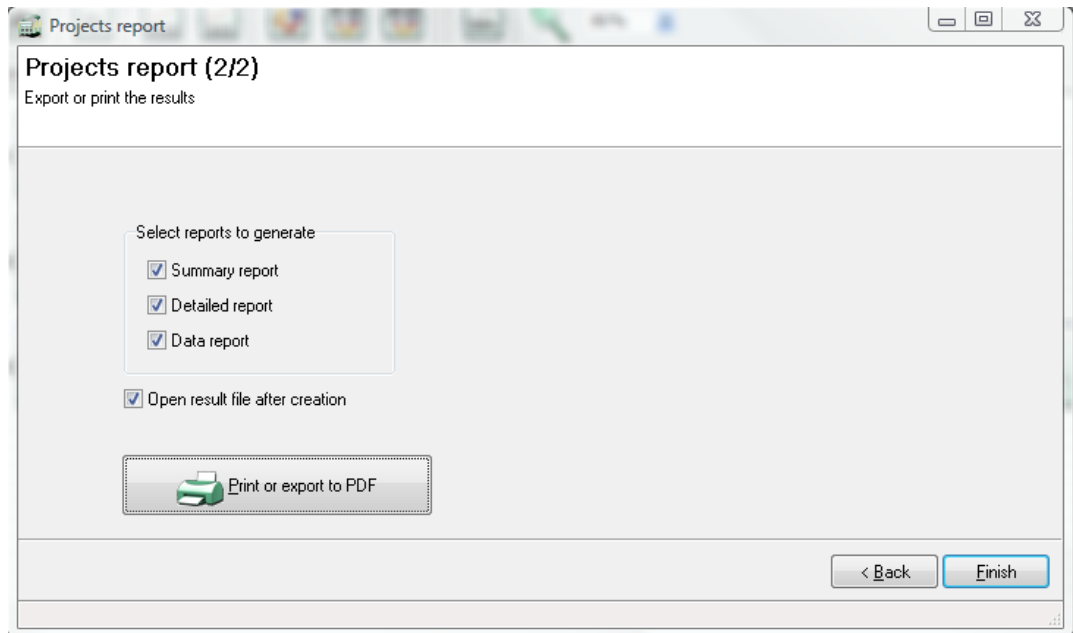


Step 3 If you want to add any information that is saved in a separate file, click the "Add" button and select the appropriate file.

Check to make sure 'OK' appears in the valid column, next to the name of the file you just loaded (if not, then the file loaded does not have data for the correct year within it, and no data will be added to the report). Add any other files using the same process. When you have added all the files required, click the 'Next' button.

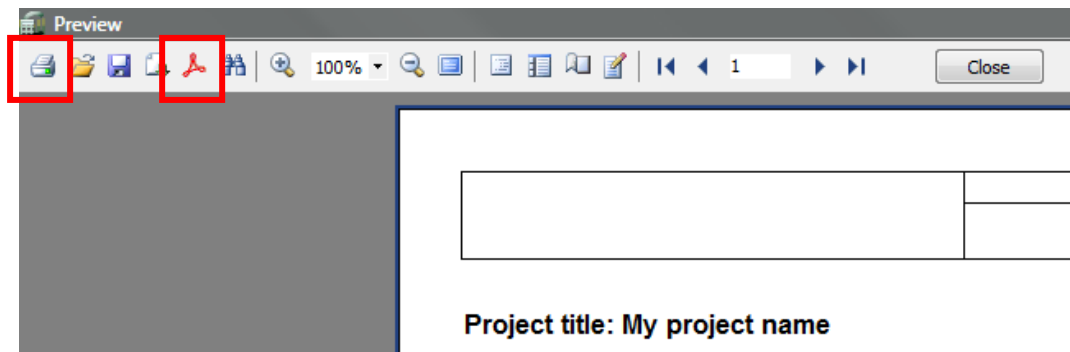
If you want to abandon the report creation, click "Cancel".

Step 4 Select which of the reports you would like to prepare (Note: all the reports you select will appear in one PDF document, so if you want separate documents of all three reports it is best to select only one type of report at a time), then press 'Print or export to PDF'



If you would like to abandon the report creation, click "Finish". If you would like to change the settings of the first screen, click "Back".

- Step 5 If you only want to print the report, then use the print button on the far left of the toolbar in the new screen. If you want to generate a PDF file, click the Adobe symbol in the toolbar.



- Step 6 If you are generating a PDF file, you will now be given the option to change various parameters for this PDF file. If you just want to export a standard PDF file simply click 'OK', you will then be given the option to name the file and specify a location for it.

Please note that this report creation function will only work if you have an Adobe reader installed on your computer. To install such a reader, please go to the following website:

<http://get.adobe.com/uk/reader/otherversions/>.

5.3 Annual reports (xls format)

Follow the steps outlined below to create annual report.

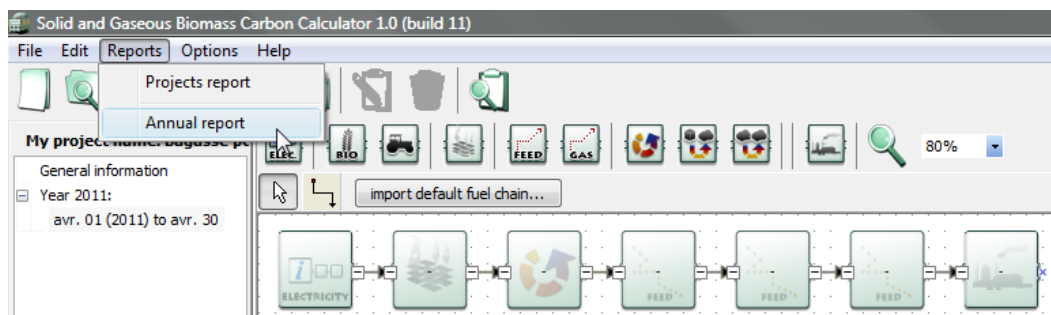
- Step 1 Load all the fuel chains that you have used in your power plant over the

past year. Please note that the fuel chains should be added to the month in which they were used. There should be one fuel chain for each consignment of fuel used.

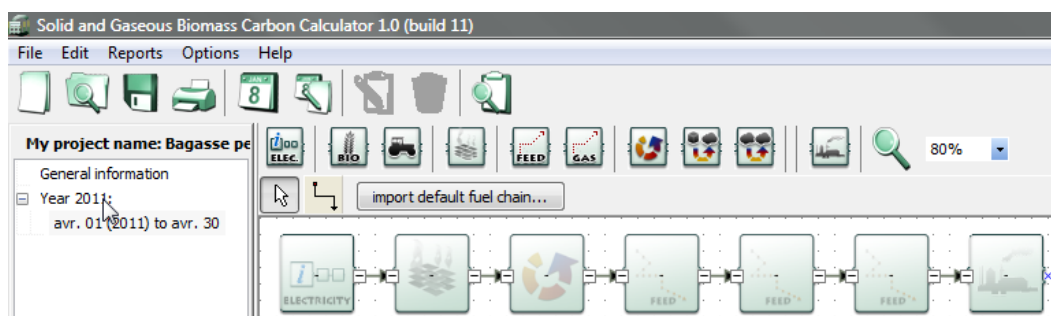
Step 2 In all the fuel chain modules, make sure that you have:

- Entered the relevant information on heat and electricity efficiency of the power plant
- Entered a quantity of fuel used

Step 3 Under the 'Reports' menu, select 'Annual report'.



OR

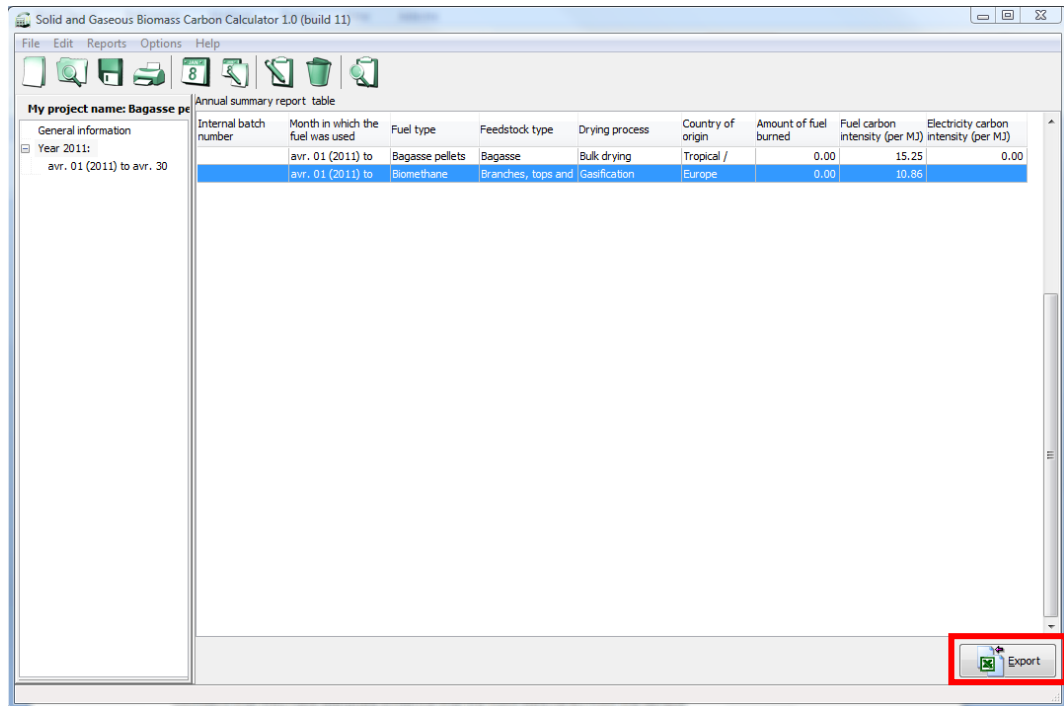


Click on 'Year 20xx' in the left-hand panel (20xx representing the actual year number).

Step 4 You will then be taken to the annual summary report screen, which shows an overview of all the fuel loaded in the current reporting year. For each fuel chain, the table contains the following information:

- Internal batch number, if you have entered it in the fuel chain module
- The month in which the fuel was used
- The fuel type
- The feedstock type
- The drying process
- The country of origin of the feedstock
- The amount of fuel burned
- The fuel carbon intensity
- And the electricity or heat carbon intensity if relevant.

If you want to export the table into an xls file, click on 'Export' and the bottom right of the window.



Step 5 You will then be prompted to enter the pathway under which you would like to save the file and to enter a file name. Then click 'Save'.

6 Updates to software and default values

If opened when online, the software will check (via the internet) to see whether there are any updates of the program or of the default values available. If updates are found, you will receive a message shortly after opening the software, asking you whether you would like to download the latest version of the software or default values. You can also manually check to make sure you have the most up-to-date version.

Follow the steps below to manually check for updates.

- Step 1 In the 'Help' menu, select either 'Check for default value updates' or 'Check for software updates'.
- Step 2 If your network uses a proxy server to access the internet, you will need to complete the proxy parameters by clicking on the 'Proxy parameters' button. You may need to check this with your system administrator. Once this has been completed, click the 'Next' button.
- Step 3 If there are any updates available for the software, a new screen will appear indicating which version it is, click 'Next' and follow the installation instructions.

7 Module descriptions

7.1 Units used in the *UK Solid and Gaseous Biomass Carbon Calculator*

Beside each quantitative information field in the *UK Solid and Gaseous Biomass Carbon Calculator*, the user can select the unit in which the data is provided. The most used units are unit of mass (tonne, kilogramme, gram), energy (megajoule) and area (hectares).

When there is uncertainty around what product the units refer to, the units are provided with the product in parenthesis. For example, agricultural yields are usually expressed in tonnes (feedstock)/ha, i.e. in tonnes of agricultural feedstock per hectare. The products most often referred to in the calculator are:

- Feedstock – this is the primary harvested product from which the biomass feedstock used in the power plant derives, e.g., sugar cane, forestry residues;
- Output – this stands for the product coming out of a module;
- Input – this stands for the product going into a module;
- CO₂e – this stands for the greenhouse gas emissions expressed in CO₂ equivalents.

7.2 Fuel chain – Electricity



Basic data	
Module description	A brief description of the module. This field is optional.
Details and links to verification evidence	Any further details can be added here, including, for example links to any evidence which supports the actual data used within this module. This field is optional.
Feedstock information	
Feedstock type	The primary harvested product from which the biomass feedstock used in the power plant derives. This field is compulsory.

Moisture content at collection	<p>The moisture content of the biomass collected.</p> <p>This field is automatically filled with a default value by the <i>Calculator</i>. Users can replace this value with actual data if appropriate. Note that if the default value in this field is changed manually in an existing default fuel chain, the energy requirements for any drying step will automatically update.</p> <p>This field is compulsory.</p>
Biomass form	<p>The format of the biomass used in the power plant.</p> <p>This field is compulsory.</p>
Lower heating value at combustion point	<p>The energy content of the biomass fuel used in the power plant.</p> <p>This field is automatically filled with a default value by the <i>Calculator</i>. Users can replace this value with actual data if appropriate.</p> <p>This field is compulsory.</p>
Process type	<p>The process type used for the production of the biomass form (if applicable).</p> <p>This field is compulsory but 'Unknown' or 'n/a' can be selected if relevant.</p>
Power Plant Information	
Electricity production only	<p>Select this option if the biomass was burned in a power plant that only exports electricity and no useful heat.</p> <p>This field is compulsory.</p>
Electricity co-produced with useful heat	<p>Select this option if the biomass was burned in a power plant producing both electricity and useful heat.</p> <p>This field is compulsory.</p>
Electricity efficiency	<p>This is the electrical efficiency of the power plant, i.e. the ratio of electricity produced by biomass input. This should be given as a decimal and reflect the units of energy in the electricity produced per unit of energy in the biomass used.</p> <p>This field is compulsory.</p>
Heat efficiency	<p>If the option 'Electricity co-produced with useful heat' is selected, it is also necessary to insert the efficiency of heat production.</p> <p>In such case, this field is compulsory.</p>
Temperature	<p>If the option 'Electricity co-produced with useful heat' is selected, the temperature of the useful heat also needs to be provided.</p> <p>The temperature is used to calculate the proportion of emissions that should be allocated to the useful heat vs. the electricity.</p> <p>This field is compulsory if 'Electricity co-produced with useful heat' is selected.</p>

Is the plant 1MWe or greater?	If the fuel is to be used in a generating station of total installed capacity $\geq 1\text{MWe}$, users should select 'Yes.' Selecting 'Yes' will trigger flags to remind the user which fields require them to enter actual data.
Country of origin information	
Feedstock country / region of origin	The country or region from which the feedstock is sourced. This field is compulsory.
Default fuel carbon intensity	This is the default carbon intensity for the Feedstock type / Biomass form / Process type / Country combination. If this field shows a value of 0 g CO ₂ e / MJ, then it means that no default value for the selected combination exists. This field is automatically filled by the <i>Calculator</i> .
Quantity of fuel used during the reporting month	In this field you can record the amount of biomass used in the power plant in a particular month or reporting period. This field is optional but you may wish to use it for your own records.
Land use on 01 Jan 2008	The land use, on 1 st January 2008, for the land from which the biomass feedstock is sourced. This field is compulsory. n/a may be selected if the feedstock is an agricultural or processing residue. If there has been a change of land use between 1 st January 2008, and when the biomass was harvested, it will be necessary to include in the carbon intensity calculations the emissions associated with that land use change. These calculations are performed in the 'Crop production' module.
Intermediate results	
Fuel chain carbon intensity	The carbon intensity of the consignment, measured in units of kilograms of CO ₂ equivalent released per tonne of fuel used in the power plant and as grams of CO ₂ equivalent per MJ of biomass fuel used in the power plant.
Electricity carbon intensity	The carbon intensity of the electricity produced from the biomass fuel, measured in units of grams of CO ₂ equivalent released per megajoule (unit of energy) of electricity produced. Please note that the electricity carbon intensity will only be calculated if you have provided the information on electricity and heat efficiency in the 'Electricity generation efficiency' section.
GHG saving	The percentage saving the electricity achieves relative to its fossil fuel equivalent. The fossil fuel equivalent of electricity is taken from the European Commission report on sustainability requirements for solid and gaseous biomass sources in electricity, heating and cooling and has a value of 198 g CO ₂ e / MJ electricity.

7.3 Fuel chain – Heat¹⁰



Basic data	
Module description	A brief description of the module. This field is optional.
Details and links to verification evidence	Any further details can be added here, including, for example links to any evidence which supports the actual data used within this module. This field is optional.
Feedstock information	
Feedstock type	The primary harvested product from which the biomass feedstock used in the power plant derives. This field is compulsory.
Moisture content at collection	The moisture content of the biomass collected. This field is automatically filled with a default value by the <i>Calculator</i> . Users can replace this value with actual data if appropriate. Note that if the default value in this field is changed manually in an existing default fuel chain, the energy requirements for any drying step will automatically update. This field is compulsory.
Biomass form	The format of the biomass used in the power plant. This field is compulsory.
Lower heating value at combustion point	The energy content of the biomass fuel used in the power plant. This field is automatically filled with a default value by the <i>Calculator</i> . Users can replace this value with actual data if appropriate. This field is compulsory.
Process type	The process used for producing the biomass form (if applicable). This field is compulsory but 'Unknown' or 'n/a' can be selected if relevant.
Heat generation efficiency	
Heat production only	Select this option if the biomass was burned in a power plant that only exports heat. This field is compulsory.

¹⁰ Note that this module is not relevant to users operating under the RO

Heat co-produced with electricity	Select this option if the biomass was burned in a power plant producing both electricity and heat. This field is compulsory.
Heat efficiency	This is the thermal efficiency of the power plant, i.e. the ratio of heat produced by biomass input. This should be given as a decimal and reflect the units of energy in the heat produced per unit of energy in the biomass used. This field is compulsory.
Electricity efficiency	If the option 'Heat co-produced with electricity' is selected, it is also necessary to insert the efficiency of electricity production. In such case, this field is compulsory.
Temperature	If the option 'Heat co-produced with electricity' is selected, the temperature of the heat also needs to be provided. The temperature is used to calculate the proportion of emissions that should be allocated to the heat vs. the electricity. This field is compulsory if 'Heat co-produced with electricity' is selected.
Country of origin information	
Feedstock country / region of origin	The country or region from which the feedstock is sourced. This field is compulsory.
Default fuel carbon intensity	This is the default carbon intensity for the Feedstock type / Biomass form / Process type / Country combination. If this field shows a value of 0 g CO ₂ e / MJ, then it means that no default value for the selected combination exists. This field is automatically filled by the <i>Calculator</i> .
Quantity of fuel used during the reporting month	In this field you can record the amount of biomass used in the power plant in a particular month or reporting period. This field is optional but you may wish to use it for your own records.
Land use on 01 Jan 2008	The land use, on 1 st January 2008, for the land from which the biomass feedstock is sourced. This field is compulsory. n/a may be selected if the feedstock is an agricultural or processing residue. If there has been a change of land use between 1 st January 2008, and when the biomass was harvested, it will be necessary to include in the carbon intensity calculations the emissions associated with that land use change. These calculations are performed in the 'Crop production' module.
Intermediate results	

Fuel chain carbon intensity	The carbon intensity of the consignment, measured in units of kilograms of CO ₂ equivalent released per tonne of biomass fuel and as grams of CO ₂ equivalent per MJ of biomass fuel or biogas used in the power plant.
Heat carbon intensity	The carbon intensity of the heat produced from the biomass fuel, measured in units of grams of CO ₂ equivalent released per megajoule (unit of energy) of heat produced. Please note that the heat carbon intensity will only be calculated if you have provided the relevant information under the 'Heat generation efficiency' section.
GHG saving	No GHG saving is currently calculated for heat

7.4 Fuel chain – Gas¹¹



Basic data	
Module description	A brief description of the module. This field is optional.
Details and links to verification evidence	Any further details can be added here, including, for example links to any evidence which supports the actual data used within this module. This field is optional.
Feedstock information	
Feedstock type	The primary harvested product from which the biomass feedstock used in the power plant derives. This field is compulsory.
Moisture content at collection	The moisture content of the biomass collected. This field is automatically filled with a default value by the <i>Calculator</i> . Users can replace this value with actual data if appropriate. Note that if the default value in this field is changed manually in an existing default fuel chain, the energy requirements for any drying step will automatically update. This field is compulsory.
Biomass form	The format of the biomass used in the power plant. This field is compulsory.
Process type	The process used for producing the biogas. This field is compulsory but 'Unknown' or 'n/a' can be selected if relevant.
Country of origin information	

¹¹ Note that this module is not relevant to users operating under the RO

Feedstock country / region of origin	The country or region from which the feedstock is sourced. This field is compulsory.
Default fuel carbon intensity	This is the default carbon intensity for the Feedstock type / Biomass form / Process type / Country combination. If this field shows a value of 0 g CO ₂ e / MJ, then it means that no default value for the selected combination exists. This field is automatically filled by the <i>Calculator</i> .
Quantity of fuel used during the reporting month	In this field you can record the amount of biomass used in the power plant in a particular month or reporting period. This field is optional but you may wish to use it for your own records.
Land use on 01 Jan 2008	The land use, on 1 st January 2008, for the land from which the biomass feedstock is sourced. This field is compulsory. n/a may be selected if the feedstock is an agricultural or processing residue. If there has been a change of land use between 1 st January 2008, and when the biomass was harvested, it will be necessary to include in the carbon intensity calculations the emissions associated with that land use change. These calculations are performed in the 'Crop production' module. If the biomass being used is a virgin forest that is being clear-felled, there will always be a land use.
Intermediate results	
Fuel carbon intensity	The carbon intensity of the consignment, measured in units of kilograms of CO ₂ equivalent released per MJ of biomethane injected to the national gas grid.
GHG saving	No GHG saving is currently calculated for biomethane as the fossil fuel comparator is not defined yet.

7.5 Crop production



Basic data	
Module description	A brief description of the module. This field is optional.
Details and links to verification evidence	Any further details can be added here, including, for example, links to any evidence which supports the actual data used within this module. This field is optional.

Crop yield	<p>The quantity of feedstock produced per unit area. The percentage moisture of crops can vary, and this will affect the yield achieved. The yield reported here should be for the moisture content reported in the fuel chain module as the moisture content at the point of collection. This field is automatically filled by the <i>Calculator</i> but can be updated with actual data if it is available.</p> <p>This field is compulsory.</p> <p>Note that the yield values provided in default chains with a rotation >1 year are annualised. Users can enter either total or annualised yields if they wish, provided data entered under the 'farming inputs' fields (e.g. fertiliser inputs) represents total or annualised input accordingly.</p>
Emissions from changes in land carbon stocks	
No change in land carbon stock	This option should be selected if the cultivation of biomass did not lead to any change in land carbon stocks between the actual land use and land use on January 1 st , 2008.
Use actual data for land use change emissions	<p>This option should be selected if the user wishes to report land use change emissions based on actual data or another methodology than the default calculation methodology outlined in EU Decision 2010/335/EU.</p> <p>The actual emissions should be put in the blank data field.</p>
Use the default methodology to calculate emissions from land use change	This option should be selected if the user wishes to use the default methodology to calculate emissions from land use change.
Land use	<p>Land use in January 2008 or current land use.</p> <p>This field is only available if the option 'Use the default methodology to calculate emissions from land use change' is selected, in which case it is mandatory.</p> <p>If clear-felled virgin forestry (lightly forested) is used as a feedstock, there will always be land use change. For "current land use" the management of the land following felling should be selected. If the land is unmanaged, "scrubland" should be selected from the drop-down list. If the land is managed as something else, e.g. a crop or a forest plantation, this should be selected from the drop-down list.</p>
Land management practice	<p>Land management practice in January 2008 or actual land management practice.</p> <p>This field is only available if the option 'Use the default methodology to calculate emissions from land use change' is selected and is only applicable for certain types of land use, in which case it is mandatory.</p>

Input to land	<p>Input to land in January 2008 or actual input to land.</p> <p>This field is only available if the option 'Use the default methodology to calculate emissions from land use change' is selected and is only applicable for certain types of land use, in which case it is mandatory.</p>
Climate region	<p>Climate type of the region where the land used to grow the biomass feedstock is located.</p> <p>This field is only available if the option 'Use the default methodology to calculate emissions from land use change' is selected, in which case it is mandatory.</p>
Soil type	<p>Soil type of the land use to grow the biomass feedstock.</p> <p>This field is only available if the option 'Use the default methodology to calculate emissions from land use change' is selected, in which case it is mandatory.</p>
Domain	<p>Climate domain of the region where the land used to grow the biomass feedstock is located.</p> <p>This field is only available if the option 'Use the default methodology to calculate emissions from land use change' is selected and is only applicable for certain types of land use, in which case it is mandatory.</p>
Land use type	<p>Further information on the land use type for the land use in January 2008 or for the actual (current) land use.</p> <p>This field is only available if the option 'Use the default methodology to calculate emissions from land use change' is selected and is only applicable for certain types of land use, in which case it is mandatory.</p>
Ecological zone	<p>Ecological zone where the land used to grow the biomass feedstock is located.</p> <p>This field is only available if the option 'Use the default methodology to calculate emissions from land use change' is selected and is only applicable for certain types of land use, in which case it is mandatory.</p>
Continent	<p>Continent on which the land used to grow the biomass feedstock is located.</p> <p>This field is only available if the option 'Use the default methodology to calculate emissions from land use change' is selected and is only applicable for certain types of land use, in which case it is mandatory.</p> <p>If forest plantation has been selected as the land use type, there may be an option to select the continent with either ≤ 20 years or >20 years. In the case that the land use change is from virgin forest to forest plantation, the option ≤ 20 years should be selected (i.e. a plantation that has been growing for less than or equal to 20 years).</p>

Carbon stock	Carbon stock of the land as used in January 2008 and actual (current) carbon stock. This field cannot be changed by users but is calculated based on the previous information.
Subtotal	Emissions from land use change in kilograms of CO ₂ equivalent per tonne of feedstock.
Emissions from cultivation	
Rate of nitrous oxide emissions per hectare	The rate at which nitrous oxide (N ₂ O) emissions are produced from the soil on which the feedstock was grown. The N ₂ O emission rate is calculated using the IPCC Tier 1 methodology based on the nitrogen fertiliser application rates entered in the 'Fertilisers' field below. Most users will not enter their own values in this field. However, if an N ₂ O value has been calculated according to a method consistent with the rules set out in the IPCC Guidelines for National Greenhouse Gas Inventories, then it can be entered here.
Subtotal	Emissions of nitrous oxide in kilograms of CO ₂ equivalent per tonne of feedstock.
Farming inputs	
Fertilisers	All information relating to the use of fertilisers during feedstock growth can be entered in this table.
Type	The type of fertiliser used.
Application rate	The rate at which the fertiliser was applied. Note: this is measured in the industry standard kilograms of 'nutrient' per hectare. Note that the values provided in default chains with a rotation >1 year are annualised figures. Users can enter either total or annualised inputs if they wish, provided that yield data represents total or annualised input accordingly.
Emissions factor	The emissions which are produced during manufacture and transport of every kilogram of fertiliser (that is kg of nutrient, not of product). Most users will not need to manually change this field, as the software will automatically select the correct default emission factor based on the fertiliser 'Type' selected.
Nitrogen content	The nitrogen content of the fertiliser applied. Most users will not need to manually change this field, as the software will automatically select the correct value based on the fertiliser 'Type' selected. Nitrogen content is measured in units of kilograms of nitrogen per kilogram of the main nutrient. If nitrogen is the main nutrient, then the nitrogen content will be 1. If there is negligible nitrogen in the fertiliser, the nitrogen content will be 0.

Subtotal	Emissions due to fertiliser production and application in kilogram of CO ₂ equivalent per tonne of feedstock.
Pesticide application rate	The quantity of all pesticides applied (measured in kilograms of active ingredient, not kilograms of product) per hectare. Note that the values provided in default chains with a rotation >1 year are annualised figures. Users can enter either total or annualised inputs if they wish, provided that yield data represents total or annualised input accordingly.
Pesticide emissions factor	The emissions which occur during manufacture and transport of every kilogram of pesticide (that is kg of active ingredient, not of product). Most users are expected to rely on the default value.
Subtotal	Emissions due to pesticide production and application in kilogram of CO ₂ equivalent per tonne of feedstock.
Other input	All information relating to products used during feedstock farming other than fertilisers, pesticides and fuel. Note that the values provided in default chains with a rotation >1 year are annualised figures. Users can enter either total or annualised inputs if they wish, provided that yield data represents total or annualised input accordingly.
Type	Type of other input – e.g. seeding materials.
Use	The quantity of the other input used.
Emissions factor	The emissions resulting from the production and use of each unit of other input. Most users are expected to rely on default values that will be automatically selected by the software based on the 'Type' of other input chosen.
Subtotal	Emissions due to production and input of other materials in kilograms of CO ₂ equivalent per tonne of feedstock.
On-farm fuel use	All information relating to the on-farm use of fuels such as diesel, with the exception of fuel used during harvesting activities. Note: more than one type of fuel can be entered into this table Note that the values provided in default chains with a rotation >1 year are annualised figures. Users can enter either total or annualised inputs if they wish, provided that yield data represents total or annualised input accordingly.
Type	Type of fuel used – e.g., diesel for tractors, electricity to power pumps for irrigation, etc.
Use	The quantity of fuel used (Note: this is the quantity of fuel used in cultivation of this crop, not total on-farm fuel use and excluding fuel used for harvesting activities).

Emissions factor	The emissions resulting from the production and use of each unit of fuel. Almost all users will rely on the default value selected by the software.
Subtotal	Emissions due to fuel production and on-farm use in kilograms of CO ₂ equivalent per tonne of feedstock.
Intermediate results	
Total for this module	The total GHG emissions of this module (measured in units of kilograms of CO ₂ e) per tonne of feedstock produced.
Contribution of this module to fuel chain	The total GHG emissions (measured in units of kilograms of CO ₂ e) produced from this stage of the fuel chain, per tonne of final biomass type used.
Percentage contribution to chain	The percentage contribution this module makes to the total GHG emissions of the fuel chain. This value may be greater than 100% because there may be a very large co-product credit in another step which reduces the total chain GHG emissions to less than the emissions from this step alone.
Total emissions up to this module	The total GHG emissions of this module and all the previous ones (measured in units of kilogram of CO ₂ e) per tonne of output of this module.

7.6 Harvesting, extraction and roadside processing



Basic data	
Module description	A brief description of the module. This field is optional.
Details and links to verification evidence	Any further details can be added here, including, for example, links to any evidence which supports the actual data used within this module. This field is optional.
Module efficiency	The efficiency with which the feedstock is harvested. Any losses should be included in this field. For example if 20% of the feedstock is "lost" during the harvesting phase, 0.8 should be inserted into this field.
Farming inputs	
Fuel information	All information relating to the on-farm use of fuels such as diesel for harvesting, extraction and/or roadside processing activities. Note: more than one type of fuel can be entered into this table
Type	Type of fuel used – e.g., diesel for harvesters.

Use	The quantity of fuel used (Note: this is the quantity of fuel used for the harvesting of the feedstock itself).
Emissions factor	The emissions resulting from the production and use of each unit of fuel. Almost all users will rely on the default value selected by the software.
Subtotal	Emissions due to fuel production and on-farm use in kilograms of CO ₂ equivalent per tonne of feedstock.
Intermediate results	
Total for this module	The total GHG emissions of this module (measured in units of kilograms of CO ₂ e) per tonne of feedstock produced.
Contribution of this module to fuel chain	The total GHG emissions (measured in units of kilograms of CO ₂ e) produced from this stage of the fuel chain, per tonne of final biomass type used.
Percentage contribution to chain	The percentage contribution this module makes to the total GHG emissions of the fuel chain. This value may be greater than 100% because there may be a very large co-product credit in another step which reduces the total chain GHG emissions to less than the emissions from this step alone.
Total emissions up to this module	The total GHG emissions of this module and all the previous ones (measured in units of kilogram of CO ₂ e) per tonne of output of this module.

7.7 Drying and storage



Basic data	
Module description	A brief description of the module. This field is optional.
Details and links to verification evidence	Any further details can be added here, including, for example, links to any evidence which supports the actual data used within this module. This field is optional.
Country in which this processing step takes place	The country in which this drying and/or storage occurs. This information is needed for the software to select the appropriate emissions factor for electricity if required (see below). This drop down list may also contain a few non-country options (e.g., local CCGT, EU (medium voltage), etc.). Select these options if the electricity used is not taken from the national grid.

Module efficiency	The efficiency with which the feedstock is dried. Any raw material losses should be included in this field. For example if 20% of the feedstock is "lost" during the drying phase, 0.8 should be inserted into this field. Measured in units of dry tonnes(output)/dry tonnes(input)
Moisture content after drying	The moisture content of the biomass after this particular drying phase. Updating this field will cause the fields 'amount of electricity used' and 'fuel information' to automatically update to reflect the estimated energy requirements. This field is compulsory.
Amount of electricity used	The total quantity of electricity used during this drying and storage step.
Electricity emissions factor	The emissions resulting from the production and use of each unit of electricity.
Subtotal	Emissions due to electricity production and consumption in kilograms of CO ₂ equivalent per tonne of feedstock.
Fuel information	
Type	Type of fuel used – e.g., diesel used in burners to provide heat for drying, etc.
Use	The quantity of fuel used during this drying and storage step.
Emissions factor	The emissions resulting from the production and use of each unit of fuel. Most users are expected to rely on the default value based on information provided in the 'Type' field.
Subtotal	Emissions due to fuel production and consumption in kilograms of CO ₂ equivalent per tonne of crop.
Conservative factor	
All data reported in this module are actual data	This option should be selected if all the data reported in the module are actual data (see Section 3.4 for details). This field is only relevant if the 'Drying and storage' module is part of the processing step (i.e. not part of the cultivation step – see Section 3.4 for more information). If it is selected, the conservative factor (factor by which the 'Total for this module' will be multiplied before the contribution of the module to the entire fuel chain is calculated) will be removed.
Intermediate results	
Total for this module	The total GHG emissions of this module (measured in units of kilograms of CO ₂ e) per tonne of feedstock produced.

Contribution of this module to fuel chain	The total GHG emissions (measured in units of kilograms of CO ₂ e) produced from this stage of the fuel chain, per tonne of final biomass type used.
Percentage contribution to chain	The percentage contribution this module makes to the total GHG emissions of the fuel chain. This value may be greater than 100% because there may be a very large co-product credit in another step which reduces the total chain GHG emissions to less than the emissions from this step alone.
Total emissions up to this module	The total GHG emissions of this module and all the previous ones (measured in units of kilogram of CO ₂ e) per tonne of output of this module.

7.8 Feedstock transport



Basic data	
Module description	A brief description of the module. This field is optional.
Details and links to verification evidence	Any further details can be added here, including, for example, links to any evidence which supports the actual data used within this module. This field is optional.
Country	The country in which this transport step begins. This is currently an optional field.
Transport mode	The mode of transport used – e.g., truck, rail, etc. Changing the entry in this field will automatically update the 'Type' of fuel in the 'Fuel Information' field to correspond to the transport mode.
Density of dry product	Density of the product transported at 0% moisture content. Default densities are provided but can be adjusted by the user.
Energy intensity of transport	The energy intensity of this transport mode. Most users will rely on the software to select the appropriate default value on the basis of the mode of transport selected. This energy intensity depends on the transport mode and the product density. The default values in the calculator factor in an empty return voyage. Note that if this field is changed manually, the calculator overrides the entry in the 'Density of dry product' field. Changing the density field subsequently will not affect the calculation, unless the Reset button is pressed.
Distance transported	The distance over which the product is transported by the selected mode.

Module efficiency	Efficiency of the transport step in tonnes of output feedstock per tonne of input feedstock – this is to account for any feedstock losses during transport.
Fuel information	
Type	Type of fuel used. If several fuels are entered, it will be necessary to know how much of each fuel is used (see next field). Note that if the default fuel type (i.e. Diesel) is changed
Use	The quantity of fuel used during this transport step – this value is automatically calculated based on the transport mode and distance specified. If more than one fuel is used you can specify how much of each fuel type is used in this field. Note that if the 'Use' figure is changed manually, this overrides the values entered in the above fields (Transport mode, Density of dry product, Energy intensity of transport, and Distance transported) in calculating the CO ₂ emissions. The entry in the 'Distance transported' is however still used in the calculation of CH ₄ and N ₂ O emissions. To revert back to using the calculation based on the aforementioned fields, press the Reset button.
Emissions factor	The emissions resulting from the production and use of each unit of fuel. Most users are expected to rely on the default value based on information provided in the 'Type' field. Note that as with the 'Use' field, changing this figure manually will override the values entered in the field above.
Subtotal	Emissions due to fuel production and consumption in kilograms of CO ₂ equivalent per tonne of output from this module (this subtotal excludes the exhaust gas emissions).
CH ₄ /N ₂ O exhaust gas emissions	This field accounts for exhaust gas emissions of other greenhouse gases. A default value is presented in this field based on the transport mode selected. This default emission value is multiplied by the distance transported in order to estimate non-CO ₂ GHG emissions.
Intermediate results	
Total for this module	The total GHG emissions of this module (measured in units of kilograms of CO ₂ e) per tonne of feedstock produced.
Contribution of this module to fuel chain	The total GHG emissions (measured in units of kilograms of CO ₂ e) produced from this stage of the fuel chain, per tonne of final biomass type used.
Percentage contribution to chain	The percentage contribution this module makes to the total GHG emissions of the fuel chain. This value may be greater than 100% because there may be a very large co-product credit in another step which reduces the total chain GHG emissions to less than the emissions from this step alone.

Total emissions up to this module	The total GHG emissions of this module and all the previous ones (measured in units of kilogram of CO ₂ e) per tonne of output of this module.
-----------------------------------	---

7.9 Gas transport



Basic data	
Module description	A brief description of the module. This field is optional.
Details and links to verification evidence	Any further details can be added here, including, for example, links to any evidence which supports the actual data used within this module. This field is optional.
Country	The country in which this transport step begins. This is currently an optional field.
Transport mode	The mode of transport used – e.g., pipeline etc.
Distance transported	The distance over which the product is transported by the selected mode.
Energy intensity of transport	The energy intensity of this transport mode. Most users will rely on the software to select the appropriate default value on the basis of the mode of transport selected. The default values in the calculator factor in an empty return voyage. Note that if this field is changed manually, the calculator overrides the entry in the 'Density of dry product' field. Changing the density field subsequently will not affect the calculation, unless the Reset button is pressed.
Module efficiency	Efficiency of the transport step in tonnes of output feedstock per tonne of input feedstock – this is especially to account for grain losses during transport.
Fuel information	
Type	Type of fuel used. If several fuels are entered, it will be necessary to know how much of each fuel is used (see next field). No default fuel information is included in the gas transport modules.
Use	The quantity of fuel used during this transport step. Any fuel used for gas transport should be entered here.
Emissions factor	The emissions resulting from the production and use of each unit of fuel. Most users are expected to rely on the default value based on information provided in the 'Type' field.

Subtotal	Emissions due to fuel production and consumption in kilograms of CO ₂ equivalent per tonne of output from this module (this subtotal excludes the exhaust gas emissions).
CH ₄ /N ₂ O exhaust gas emissions	This field accounts for exhaust gas emissions of other greenhouse gases. A default value is presented in this field based on the transport mode selected. This default emission value is multiplied by the distance transported in order to estimate non-CO ₂ GHG emissions.
Intermediate results	
Total for this module	The total GHG emissions of this module (measured in units of grams of CO ₂ e) per MJ of gas produced.
Contribution of this module to fuel chain	The total GHG emissions (measured in units of grams of CO ₂ e) produced from this stage of the fuel chain, per MJ of biogas.
Percentage contribution to chain	The percentage contribution this module makes to the total GHG emissions of the fuel chain. This value may be greater than 100% because there may be a very large co-product credit in another step which reduces the total chain GHG emissions to less than the emissions from this step alone.
Total emissions up to this module	The total GHG emissions of this module and all the previous ones (measured in units of grams of CO ₂ e) per MJ of gas.

7.10 Biomass processing (chipping, briquetting, pelleting)



Basic data	
Module description	A brief description of the module. This field is optional.
Details and links to verification evidence	Any further details can be added here, including, for example, links to any evidence which supports the actual data used within this module. This field is optional.
Country in which this processing step takes place	The country in which this plant is located. This information is needed by the software to select the appropriate emissions factor for electricity (see below). This drop down list may also contain a few non-country options (e.g., local CCGT, EU (medium voltage), etc.). Select these options if the electricity used is not taken from the national grid.
Product	Product produced by this module – e.g., wood pellets, energy grass chips, etc.

Plant yield	Quantity of output per quantity of input measured in units of dry tonnes(output)/dry tonnes(input), e.g., tonnes energy grass pellets (at 0% moisture content) per tonne energy grass chips (at 0% moisture content)
Moisture content of output product	Moisture content of the product produced by this module (measured in %).
Plant inputs	
Amount of electricity used	The total quantity of electricity used (per tonne of output) during this conversion step. For information on this field specific to wood pellet chains, please consult section 3.7.1.
Electricity emissions factor	The emissions resulting from the production and use of each unit of electricity.
Subtotal	Emissions from the production and consumption of electricity in kilograms of CO ₂ equivalent per tonne of output from this module.
Fuel used per tonne of output	
Type	Type of fuel used – e.g. natural gas burnt in a boiler to provide process heat, etc.
Use	The quantity of fuel used during this conversion step, per tonne of output.
Emissions factor	The emissions resulting from the production and use of each unit of fuel. Most users are expected to rely on the default value based on information provided in the 'Type' field.
Subtotal	Emissions from the production and consumption of fuel in kilograms of CO ₂ equivalent per tonne of output from this module.
Chemicals	
Type	Type of chemical used – e.g., n-hexane used to produce rapeseed oil and rapeseed meal from oilseed rape, etc.
Use	The quantity of chemical used during this conversion step, per tonne of output.
Emissions factor	The emissions resulting from the production and use of each unit of chemical. Most users are expected to rely on the default value based on information provided in the 'Type' field.
Subtotal	Emissions from the production and consumption of chemicals in kilograms of CO ₂ equivalent per tonne of output from this module.
Co-products	
Name	The name of the co-product produced by this conversion process.

Use	The market in which the co-product is used – e.g. for animal feed, for fertiliser etc.
Description	If the 'Name' and/or 'Use' of a particular co-product are not specified in the software, they can be recorded in the description field.
Yield	Quantity of co-product produced per tonne of output from this conversion module.
Co-product credit	The credit attributed to this use of the selected co-product. Note: if the 'Co-product credit' is a value other than zero, then the 'Energy Content' (see below) must be set to zero. See the Renewable Energy Directive Annex V paragraph 16 to 18 for the rules to follow to determine whether a co-product is eligible for a credit or should be taken into account through the allocation factor. In general, only excess electricity from a local CHP plant can be eligible for a credit, except where the fuel used in the cogeneration unit is a co-product other than an agricultural crop residue.
Energy Content	The lower heating value of this co-product. Note: if the 'Co-product credit' is set to zero, then the 'Energy Content' must be a value other than zero. If the co-product is not eligible for a credit (see row above), then it must be taken into account from the allocation factor by specifying the energy content of the co-product.
Credit or debit for co-products	This value shows the total impact of the co-products. If the value is negative, then the co-products have the effect of reducing the overall carbon intensity of the fuel chain. If the value is positive, then the co-products have increased the carbon intensity of the fuel chain.
Share of emissions allocated to the output product	The value shows the allocation factor for the main output products. If the value is 100%, it means that all GHG emissions up to this point in the chain are allocated to the output of the module. If it is less than 100%, it means that only a portion of the emissions are allocated to the output.
Carbon Capture & Replacement / Storage	
Carbon Capture & Replacement / Storage	This field accounts for any avoided greenhouse gas emissions through carbon capture & replacement, or carbon capture and storage where applicable. Units are kgCO ₂ e/tonne(output).
Conservative factor	

All data reported in this module are actual data	<p>This option should be selected if all the data reported in the module are actual data (see Section 3.4 for details).</p> <p>This field is only relevant if the 'Biomass processing' module is part of the processing step (i.e. not part of the cultivation step – see Section 3.4 for more information).</p> <p>If it is selected, the conservative factor (factor by which the 'Total for this module' will be multiplied before the contribution of the module to the entire fuel chain is calculated) will be removed.</p>
Intermediate results	
Total for this module	The total GHG emissions of this module (measured in units of kilograms of CO ₂ e) per tonne of feedstock produced.
Contribution of this module to fuel chain	The total GHG emissions (measured in units of kilograms of CO ₂ e) produced from this stage of the fuel chain, per tonne of final biomass type used.
Percentage contribution to chain	The percentage contribution this module makes to the total GHG emissions of the fuel chain. This value may be greater than 100% because there may be a very large co-product credit in another step which reduces the total chain GHG emissions to less than the emissions from this step alone.
Total emissions up to this module	The total GHG emissions of this module and all the previous ones (measured in units of kilogram of CO ₂ e) per tonne of output of this module.

7.11 Conversion of biomass feedstock to biogas



Basic data	
Module description	<p>A brief description of the module.</p> <p>This field is optional.</p>
Details and links to verification evidence	<p>Any further details can be added here, including, for example, links to any evidence which supports the actual data used within this module.</p> <p>This field is optional.</p>
Country in which this processing step takes place	<p>The country in which this plant is located. This information is needed by the software to select the appropriate emissions factor for electricity (see below).</p> <p>This drop down list may also contain a few non-country options (e.g., local CCGT, EU (medium voltage), etc.). Select these options if the electricity used is not taken from the national grid.</p>
Product	Product produced by this module – e.g., biogas or biomethane.

Plant yield	Quantity of biogas per quantity of input (measured in units of MJ output per tonne input).
Plant inputs	
Amount of electricity used	The total quantity of electricity used (per MJ of output) during this conversion step.
Electricity emissions factor	The emissions resulting from the production and use of each unit of electricity.
Subtotal	Emissions from the production and consumption of electricity in kilograms of CO ₂ equivalent per MJ of output from this module.
Fuel used per MJ of output	
Type	Type of fuel used – e.g. natural gas burnt in a boiler to provide process heat, etc.
Use	The quantity of fuel used during this conversion step, per MJ of output.
Emissions factor	The emissions resulting from the production and use of each unit of fuel. Most users are expected to rely on the default value based on information provided in the 'Type' field.
Subtotal	Emissions from the production and consumption of fuel in kilograms of CO ₂ equivalent per MJ of output from this module.
Chemicals	
Type	Type of chemical used – e.g., n-hexane used to produce rapeseed oil and rapeseed meal from oilseed rape, etc.
Use	The quantity of chemical used during this conversion step, per MJ of output.
Emissions factor	The emissions resulting from the production and use of each unit of chemical. Most users are expected to rely on the default value based on information provided in the 'Type' field.
Subtotal	Emissions from the production and consumption of chemicals in kilograms of CO ₂ equivalent per MJ of output from this module.
Co-products	
Name	The name of the co-product produced by this conversion process.
Use	The market in which the co-product is used – e.g. for animal feed, for fertiliser etc.
Description	If the 'Name' and/or 'Use' of a particular co-product are not specified in the software, they can be recorded in the description field.

Yield	Quantity of co-product produced per MJ of output from this conversion module.
Co-product credit	The credit attributed to this use of the selected co-product. Note: if the 'Co-product credit' is a value other than zero, then the 'Energy Content' (see below) must be set to zero. See the Renewable Energy Directive Annex V paragraph 16 to 18 for the rules to follow to determine whether a co-product is eligible for a credit or should be taken into account through the allocation factor. In general, only excess electricity from a local CHP plant can be eligible for a credit, except where the fuel used in the cogeneration unit is a co-product other than an agricultural crop residue.
Energy Content	The lower heating value of this co-product. Note: if the 'Co-product credit' is set to zero, then the 'Energy Content' must be a value other than zero. If the co-product is not eligible for a credit (see row above), then it must be taken into account from the allocation factor by specifying the energy content of the co-product.
Credit or debit for co-products	This value shows the total impact of the co-products. If the value is negative, then the co-products have the effect of reducing the overall carbon intensity of the fuel chain. If the value is positive, then the co-products have increased the carbon intensity of the fuel chain.
Share of emissions allocated to the output product	The value shows the allocation factor for the main output products. If the value is 100%, it means that all GHG emissions up to this point in the chain are allocated to the output of the module. If it is less than 100%, it means that only a portion of the emissions are allocated to the output.
Other	
Methane losses	Methane losses during the conversion step, measured in grams of methane per MJ of output from this module. The methane losses are accounted as GHG emissions from the module, assuming a Global Warming Potential for methane of 25.
Carbon Capture & Replacement / Storage	
Carbon Capture & Replacement / Storage	This field accounts for any avoided greenhouse gas emissions through carbon capture & replacement, or carbon capture and storage where applicable. Units are kgCO ₂ e/tonne(output).
Conservative factor	

All data reported in this module are actual data	<p>This option should be selected if all the data reported in the module are actual data (see Section 3.4 for details).</p> <p>This field is only relevant if the 'Biomass processing' module is part of the processing step (i.e. not part of the cultivation step – see Section 3.4 for more information).</p> <p>If it is selected, the conservative factor (factor by which the 'Total for this module' will be multiplied before the contribution of the module to the entire fuel chain is calculated) will be removed.</p>
Intermediate results	
Total for this module	The total GHG emissions of this module (measured in units of grams of CO ₂ e) per MJ of biogas produced.
Contribution of this module to fuel chain	The total GHG emissions (measured in units of grams of CO ₂ e) produced from this stage of the fuel chain, per MJ of biogas produced.
Percentage contribution to chain	The percentage contribution this module makes to the total GHG emissions of the fuel chain. This value may be greater than 100% because there may be a very large co-product credit in another step which reduces the total chain GHG emissions to less than the emissions from this step alone.
Total emissions up to this module	The total GHG emissions of this module and all the previous ones (measured in units of grams of CO ₂ e) per MJ of output of this module.

7.12 Biogas upgrading



Basic data	
Module description	<p>A brief description of the module.</p> <p>This field is optional.</p>
Details and links to verification evidence	<p>Any further details can be added here, including, for example, links to any evidence which supports the actual data used within this module.</p> <p>This field is optional.</p>
Country in which this processing step takes place	<p>The country in which this plant is located. This information is needed by the software to select the appropriate emissions factor for electricity (see below).</p> <p>This drop down list may also contain a few non-country options (e.g., local CCGT, EU (medium voltage), etc.). Select these options if the electricity used is not taken from the national grid.</p>
Product	Product produced by this module – e.g., biomethane.

Plant yield	Quantity of output per quantity of input (measured in units of MJ output per MJ input).
Plant inputs	
Amount of electricity used	The total quantity of electricity used (per MJ of output) during this conversion step.
Electricity emissions factor	The emissions resulting from the production and use of each unit of electricity.
Subtotal	Emissions from the production and consumption of electricity in kilograms of CO ₂ equivalent per MJ of output from this module.
Fuel used per MJ of output	
Type	Type of fuel used – e.g. natural gas burnt in a boiler to provide process heat, etc.
Use	The quantity of fuel used during this conversion step, per MJ of output.
Emissions factor	The emissions resulting from the production and use of each unit of fuel. Most users are expected to rely on the default value based on information provided in the 'Type' field.
Subtotal	Emissions from the production and consumption of fuel in kilograms of CO ₂ equivalent per MJ of output from this module.
Chemicals	
Type	Type of chemical used – e.g., n-hexane used to produce rapeseed oil and rapeseed meal from oilseed rape, etc.
Use	The quantity of chemical used during this conversion step, per MJ of output.
Emissions factor	The emissions resulting from the production and use of each unit of chemical. Most users are expected to rely on the default value based on information provided in the 'Type' field.
Subtotal	Emissions from the production and consumption of chemicals in kilograms of CO ₂ equivalent per MJ of output from this module.
Co-products	
Name	The name of the co-product produced by this conversion process.
Use	The market in which the co-product is used – e.g. for animal feed, for fertiliser etc.
Description	If the 'Name' and/or 'Use' of a particular co-product are not specified in the software, they can be recorded in the description field.

Yield	Quantity of co-product produced per MJ of output from this conversion module.
Co-product credit	<p>The credit attributed to this use of the selected co-product. Note: if the 'Co-product credit' is a value other than zero, then the 'Energy Content' (see below) must be set to zero. See the Renewable Energy Directive Annex V paragraph 16 to 18 for the rules to follow to determine whether a co-product is eligible for a credit or should be taken into account through the allocation factor.</p> <p>In general, only excess electricity from a local CHP plant can be eligible for a credit, except where the fuel used in the cogeneration unit is a co-product other than an agricultural crop residue.</p>
Energy Content	<p>The lower heating value of this co-product. Note: if the 'Co-product credit' is set to zero, then the 'Energy Content' must be a value other than zero. If the co-product is not eligible for a credit (see row above), then it must be taken into account from the allocation factor by specifying the energy content of the co-product.</p>
Credit or debit for co-products	This value shows the total impact of the co-products. If the value is negative, then the co-products have the effect of reducing the overall carbon intensity of the fuel chain. If the value is positive, then the co-products have increased the carbon intensity of the fuel chain.
Share of emissions allocated to the output product	The value shows the allocation factor for the main output products. If the value is 100%, it means that all GHG emissions up to this point in the chain are allocated to the output of the module. If it is less than 100%, it means that only a portion of the emissions are allocated to the output.
Other	
Methane losses	Methane losses during the conversion step, measured in grams of methane per MJ of output from this module. The methane losses are accounted as GHG emissions from the module, assuming a Global Warming Potential for methane of 25.
Carbon Capture & Replacement / Storage	
Carbon Capture & Replacement / Storage	This field accounts for any avoided greenhouse gas emissions through carbon capture & replacement, or carbon capture and storage where applicable. Units are kgCO ₂ e/tonne(output).
Conservative factor	

All data reported in this module are actual data	<p>This option should be selected if all the data reported in the module are actual data (see Section 3.4 for details).</p> <p>This field is only relevant if the 'Biomass processing' module is part of the processing step (i.e. not part of the cultivation step – see Section 3.4 for more information).</p> <p>If it is selected, the conservative factor (factor by which the 'Total for this module' will be multiplied before the contribution of the module to the entire fuel chain is calculated) will be removed.</p>
Intermediate results	
Total for this module	The total GHG emissions of this module (measured in units of grams of CO ₂ e) per MJ of biogas produced.
Contribution of this module to fuel chain	The total GHG emissions (measured in units of grams of CO ₂ e) produced from this stage of the fuel chain, per MJ of biogas produced.
Percentage contribution to chain	The percentage contribution this module makes to the total GHG emissions of the fuel chain. This value may be greater than 100% because there may be a very large co-product credit in another step which reduces the total chain GHG emissions to less than the emissions from this step alone.
Total emissions up to this module	The total GHG emissions of this module and all the previous ones (measured in units of grams of CO ₂ e) per MJ of output of this module.

7.13 Storage



Basic data	
Module description	<p>A brief description of the module.</p> <p>This field is optional.</p>
Details and links to verification evidence	<p>Any further details can be added here, including, for example, links to any evidence which supports the actual data used within this module.</p> <p>This field is optional.</p>
Country in which this processing step takes place	<p>The country in which this storage occurs. This information is needed for the software to select the appropriate emissions factor for electricity if required (see below).</p> <p>This drop down list may also contain a few non-country options (e.g., local CCGT, EU (medium voltage), etc.). Select these options if the electricity used is not taken from the national grid.</p>

Module efficiency	Any raw material losses should be included in this field. For example if 1% of the feedstock is "lost" while loading/unloading the feedstock, the figure here should be 0.99. Measured in units of dry tonnes(output)/dry tonnes(input)
Amount of electricity used	The total quantity of electricity used during this storage step.
Electricity emissions factor	The emissions resulting from the production and use of each unit of electricity.
Subtotal	Emissions due to electricity production and consumption in kilograms of CO ₂ equivalent per tonne of feedstock.
Fuel information	
Type	Type of fuel used if any
Use	The quantity of fuel used during this storage step.
Emissions factor	The emissions resulting from the production and use of each unit of fuel. Most users are expected to rely on the default value based on information provided in the 'Type' field.
Subtotal	Emissions due to fuel production and consumption in kilograms of CO ₂ equivalent per tonne of output.
Other	
Methane losses	Methane losses during the storage step, measured in kilograms of methane per tonne of output from this module. The methane losses are accounted as GHG emissions from the module, assuming a Global Warming Potential for methane of 25.
Conservative factor	
All data reported in this module are actual data	This option should be selected if all the data reported in the module are actual data (see Section 3.4 for details). This field is only relevant if the 'storage' module is part of the processing step (i.e. not part of the cultivation step – see Section 3.4 for more information). If it is selected, the conservative factor (factor by which the 'Total for this module' will be multiplied before the contribution of the module to the entire fuel chain is calculated) will be removed.
Intermediate results	
Total for this module	The total GHG emissions of this module (measured in units of kilograms of CO ₂ e) per tonne of feedstock produced.
Contribution of this module to fuel chain	The total GHG emissions (measured in units of kilograms of CO ₂ e) produced from this stage of the fuel chain, per tonne of final biomass type used.

Percentage contribution to chain	The percentage contribution this module makes to the total GHG emissions of the fuel chain.
Total emissions up to this module	The total GHG emissions of this module and all the previous ones (measured in units of kilogram of CO ₂ e) per tonne of output of this module.

7.14 Electricity production



Basic data	
Module description	A brief description of the module. This field is optional.
Details and links to verification evidence	Any further details can be added here, including, for example, links to any evidence which supports the actual data used within this module. This field is optional.
Electricity generation efficiency	
Electricity production only	Select this option if the biomass was burned in a power plant that only exports electricity and no useful heat. This field is compulsory but can only be changed in the 'Fuel chain – Electricity' module.
Electricity co-produced with useful heat	Select this option if the biomass was burned in a power plant producing both electricity and useful heat. This field is compulsory but can only be changed in the 'Fuel chain – Electricity' module.
Electricity efficiency	This is the electrical efficiency of the power plant, i.e. the ratio of electricity produced by biomass input. This should be given as a decimal and reflect the units of energy in the electricity produced per unit of energy in the biomass used. This field is compulsory but can only be changed in the 'Fuel chain – Electricity' module.
Heat efficiency	If the option 'Electricity co-produced with useful heat' is selected, it is also necessary to insert the efficiency of heat production. In such case, this field is compulsory but can only be changed in the 'Fuel chain – Electricity' module.

Temperature	<p>If the option 'Electricity co-produced with useful heat' is selected, the temperature of the useful heat also needs to be provided.</p> <p>The temperature is used to calculate the proportion of emissions that should be allocated to the useful heat vs. the electricity.</p> <p>This field is compulsory if 'Electricity co-produced with useful heat' is selected, but can only be changed in the 'Fuel chain – Electricity' module.</p>
Intermediate results	
Fuel chain carbon intensity	The carbon intensity of the consignment, measured in units of kilograms of CO ₂ equivalent released per tonne of biomass feedstock used in the power plant and as grams of CO ₂ equivalent per MJ of biomass feedstock used in the power plant.
Electricity carbon intensity	The carbon intensity of the electricity produced from the biomass, measured in units of grams of CO ₂ equivalent released per megajoule (unit of energy) of electricity produced.
GHG saving	<p>The percentage saving the electricity achieves relative to its fossil fuel equivalent.</p> <p>The fossil fuel equivalent of electricity is taken from the European Commission report on sustainability requirements for solid and gaseous biomass sources in electricity, heating and cooling and has a value of 198 g CO₂e / MJ electricity.</p>

7.15 Heat production¹²



Basic data	
Module description	<p>A brief description of the module.</p> <p>This field is optional.</p>
Details and links to verification evidence	<p>Any further details can be added here, including, for example, links to any evidence which supports the actual data used within this module.</p> <p>This field is optional.</p>
Heat generation efficiency	
Heat production only	<p>Select this option if the biomass was burned in a power plant that only exports heat and no electricity.</p> <p>This field is compulsory but can only be changed in the 'Fuel chain – Heat' module.</p>

¹² Note that this module is not relevant to users operating under the RO

Heat co-produced with electricity	Select this option if the biomass was burned in a power plant producing both electricity and heat. This field is compulsory but can only be changed in the 'Fuel chain – Heat' module.
Heat efficiency	This is the thermal efficiency of the power plant, i.e. the ratio of heat produced by biomass input. This should be given as a decimal and reflect the units of energy in the heat produced per unit of energy in the biomass used. This field is compulsory but can only be changed in the 'Fuel chain – Heat' module.
Electricity efficiency	If the option 'Heat co-produced with electricity' is selected, it is also necessary to insert the efficiency of electricity production. In such case, this field is compulsory but can only be changed in the 'Fuel chain – Heat' module.
Temperature	If the option 'Heat co-produced with electricity' is selected, the temperature of the heat also needs to be provided. The temperature is used to calculate the proportion of emissions that should be allocated to the heat vs. the electricity. This field is compulsory if 'Heat co-produced with electricity' is selected, but can only be changed in the 'Fuel chain – Heat' module.
Intermediate results	
Fuel chain carbon intensity	The carbon intensity of the consignment, measured in units of kilograms of CO ₂ equivalent released per tonne of biomass fuel used in the power plant and as grams of CO ₂ equivalent per MJ of biomass fuel or biogas used in the power plant.
Heat carbon intensity	The carbon intensity of the heat produced from the biomass, measured in units of grams of CO ₂ equivalent released per megajoule (unit of energy) of heat produced.
GHG saving	The percentage saving the heat achieves relative to its fossil fuel equivalent. The fossil fuel equivalent of heat is taken from the European Commission report on sustainability requirements for solid and gaseous biomass sources in electricity, heating and cooling and has a value of 87 g CO ₂ e / MJ heat.

7.16 Gas injection to the national natural gas grid¹³



¹³ Note that this module is not relevant to users operating under the RO

Basic data	
Module description	A brief description of the module. This field is optional.
Details and links to verification evidence	Any further details can be added here, including, for example, links to any evidence which supports the actual data used within this module. This field is optional.
Country in which this processing step takes place	The country in which the injection takes place. This information is needed by the software to select the appropriate emissions factor for electricity (see below). This drop down list may also contain a few non-country options (e.g., local CCGT, EU (medium voltage), etc.). Select these options if the electricity used is not taken from the national grid.
Efficiency (methane losses during injection)	Efficiency of the injection, taking into account the possible methane losses during injection.
Plant inputs	
Amount of electricity used	The total quantity of electricity used (per MJ of output) during this conversion step.
Electricity emission factor	The emissions resulting from the production and use of each unit of electricity.
Subtotal	Emissions from the production and consumption of electricity in kilograms of CO ₂ equivalent per MJ of output from this module.
Fuel used per MJ of output	
Type	Type of fuel used – e.g. natural gas burnt in a boiler to provide process heat, etc.
Use	The quantity of fuel used during this conversion step, per MJ of output.
Emissions factor	The emissions resulting from the production and use of each unit of fuel. Most users are expected to rely on the default value based on information provided in the 'Type' field.
Subtotal	Emissions from the production and consumption of fuel in kilograms of CO ₂ equivalent per MJ of output from this module.
Other	
Methane losses	Methane losses during the conversion step, measured in grams of methane per MJ of output from this module. The methane losses are accounted as GHG emissions from the module, assuming a Global Warming Potential for methane of 25.

Conservative factor	
All data reported in this module are actual data	<p>This option should be selected if all the data reported in the module are actual data (see Section 3.4 for details).</p> <p>This field is only relevant if the 'Biomass processing' module is part of the processing step (i.e. not part of the cultivation step – see Section 3.4 for more information).</p> <p>If it is selected, the conservative factor (factor by which the 'Total for this module' will be multiplied before the contribution of the module to the entire fuel chain is calculated) will be removed.</p>
Intermediate results	
Total for this module	The total GHG emissions of this module (measured in units of grams of CO ₂ e) per MJ of biogas produced.
Contribution of this module to fuel chain	The total GHG emissions (measured in units of grams of CO ₂ e) produced from this stage of the fuel chain, per MJ of biogas produced.
Percentage contribution to chain	The percentage contribution this module makes to the total GHG emissions of the fuel chain. This value may be greater than 100% because there may be a very large co-product credit in another step which reduces the total chain GHG emissions to less than the emissions from this step alone.
Total emissions up to this module	The total GHG emissions of this module and all the previous ones (measured in units of grams of CO ₂ e) per MJ of output of this module.

8 Glossary

8.1 Feedstock types

Feedstock type is the type of biomass from which the final fuel is produced. N.B. [W/R] next to a feedstock in the list below indicates the feedstock is a waste or residue; whereas [C] indicates the feedstock is a co-product.

Bagasse [W/R]:

Fibrous processing residue produced when juice is extracted from sugarcane.

Bark [W/R]:

The tough outer surface of trunks of trees, and other woody plants.

Branch wood [W/R]:

Woody portions of a tree excluding the stem and roots.

Clear-felled virgin forestry (lightly forested) [C]:

An area lightly forested (i.e. 10-30% canopy cover) with virgin trees (i.e. non-plantation) and clear-felled for biomass. As this is a virgin forest, rather than a plantation, there are no inputs associated with the cultivation stage (e.g. no fertiliser has been applied). However, there will be emissions associated with the change in land use from virgin forest to whatever the forest is managed as subsequently. These land use change emissions need to be taken into consideration in the cultivation module of the calculator. If using the default methodology for calculating emissions from land use change, and the forest is left unmanaged after felling, the land use following felling should be assumed to be "scrubland". If trees are replanted, "forest plantation" should be selected as the "current land use", if annual crops are grown, this should be selected, etc.

Diseased wood and storm salvage [W/R]:

Timber that is diseased or has been damaged during a storm and is subsequently of little value other than for energy.

End of life non-timber plantations [W/R]:

Standing trees from plantations for non-timber products (e.g., coconut, rubber, palm trees) which have reached the end of their useful life. Only tropical/sub-tropical locations have been considered to fall into this category so far.

Energy grass [C]:

Generic grouping of non-miscanthus energy grasses, e.g., switchgrass, reed canary grass, giant reed, etc. Users can adapt this generic chain with actual data for their specific energy grass if they have data available.

Husks/Shells [W/R]:

The outer shell or coating of a seed.

Forestry residues [W/R]:

Branch wood, tops, bark and stump collected from forests or plantations.

Long rotation forestry (broadleaf) [C]

Broadleaf tree plantations felled after a growing period of several decades, and then replanted

Long rotation forestry (conifer) [C]

Conifer tree plantations felled after a growing period of several decades, and then replanted

Manure [W/R]:

Wet manure is mainly produced by intensive pig farms, while dry manure results from more environmentally-aware farming practices.

Miscanthus [C]:

Species of energy grass called *Miscanthus x giganteus*.

Municipal Solid Waste [W/R]:

Urban, predominantly household, waste.

Olive cake [W/R]:

Co-product of olive oil production.

Palm kernel meal [C]:

Co-product of palm oil production.

Saw dust [W/R]:

Powdered particles of wood produced by sawing.

Sawmill residues [W/R]:

Any wood residue in the form of chip, bark, sawdust, etc. that is produced at a sawmill.

Short rotation coppice (combined harvesting and billeting) [C]:

Short Rotation Coppice (SRC) refers to varieties of poplar and willow grown in wood plantations managed through coppicing. Harvesting was assumed to take place every 2 to 5 years. SRC can be harvested using three different techniques. Combined harvesting and billeting refers to a harvest using machines that cut coppice stems into shorter lengths (5-10 cm), called billets.

Short rotation coppice (combined harvesting and chipping) [C]:

SRC refers to varieties of poplar and willow grown in wood plantations managed through coppicing. Harvesting was assumed to take place every 2 to 5 years. SRC can be harvested using three different techniques. Combined harvesting and chipping refers to a harvest in which the crop is cut and chipped in a single pass.

Short rotation coppice (stick harvesting) [C]:

SRC refers to varieties of poplar and willow grown in wood plantations managed through coppicing. Harvesting was assumed to take place every 2 to 5 years. SRC can be harvested using three different techniques. Under stick harvesting, the crop is cut as whole stems.

Short rotation forestry [C]:

Short Rotation Forestry (SRF) refers to tree plantations with short harvest rotations (typically every 8 to 15 years). For tropical/sub-tropical regions, eucalyptus is used as a representative type of short rotation forestry crop.

Silage grass [C]:

Forage grass typically harvested and fermented for use as winter fodder for cattle and sheep. It is also suitable as a biomass feedstock.

Slab wood [W/R]:

An outsize piece cut from a log when squaring it for lumber.

Sugarbeet [C]:

Plant with a tuber with a high concentration of sucrose. Grown commercially for sugar production.

Straw [W/R]:

This includes wheat straw, corn stover and other types of straw that may be harvested for use in power plants.

Tree Stumps [W/R]:

The basal portion of a tree remaining after the rest has been removed.

Thinnings [W/R]:

Roundwood from a forest or plantation thinning, as long as this practice does not change the land use status of the area.

Tree tops [W/R]:

The topmost part of a tree.

Waste wood [W/R]:

This category includes clean or treated waste wood, chipboard, MDF, etc. As the wood is considered to be a "waste", no emissions are assumed to be associated with its production. This category is only for wood that does not need to be pre-treated prior to its use.

8.2 Biomass forms

Biomass form is the form of the biomass used as fuel in the power plant

Bagasse pellet:

A small, densely packed mass of dried bagasse. Pelletizing facilitates bagasse storage and its utilisation as a fuel.

Biogas:

Gas produced by anaerobic digestion containing about 55% methane and 45% carbon dioxide.

Biomethane:

Gas mixture that is predominantly methane, which meets the UK natural gas grid requirements, and is sourced from organic material (biomass).

Biopropane:

An alkane with identical properties to fossil propane, whose carbon atoms are of biogenic origin. Often a co-product of Hydrogenated Vegetable Oil production.

Briquette:

Briquettes are similar to pellets in that the biomass is processed into a denser and uniform format. However, they are larger in size, typically >25mm in diameter.

Charcoal:

A material formed from the incomplete combustion of organic material in a kiln or retort.

Chip:

Less uniform in size than pellets, and typically larger (in the range 20-50mm in size)

Crop processing residue pellets:

Husks or shells resulting from the processing of crops.

Draff:

The co-product resulting from the fermentation of the grains used in brewing, used as animal feed.

Olive cake:

Co-product of olive oil production.

Pellet:

Densified, biomass processed into uniform size, typically 5-10mm in size and <10% moisture content

Rapeseed meal:

Residue left over when oil is extracted from rapeseed. Commonly used as animal feed.

Refuse derived fuel:

Fuel derived from the non-biodegradable component of municipal solid waste (MSW).

Straw bales:

A bundle of straw tightly packed and bound.

Sweet sorghum DDGS:

The protein containing co-product resulting from the production of bioethanol from sweet sorghum.

Torrefied biomass:

Biomass that has been subject to a thermal process in which the material is

exposed to high temperature, in the absence of oxygen, and so without the oxidation that typically occurs during combustion. This improves hydrophobicity, grindability and energy density.

Wheat DDGS:

The protein containing co-product resulting from the production of bioethanol from wheat.

8.3 Process types

Aerobic processing and dry stabilisation:

Process to produce refuse derived fuel in which the heat from the composting of the biological component of the waste is used to dry the input MSW, thereby easing the separation process and resulting in a higher yield of fuel than a straight aerobic process in which the MSW is not dried prior to sorting.

Aerobic processing:

Process to produce refuse derived fuel in which the MSW is not dried using heat from composting prior to mechanical sorting, and the biological component of the MSW is not anaerobically digested to produce biogas.

Anaerobic digestion:

Series of processes in which microorganisms break down biodegradable material in the absence of oxygen to produce biogas.

Anaerobic processing:

Process to produce refuse derived fuel in which the biological component of the waste is anaerobically digested to produce biogas, which is used on site to generate heat and power; some of which is used in the production of fuel from the non-biological component of waste (i.e. the shredding, screening and separation).

Bulk drying:

Drying with low volume ventilation using electrical fans.

Continuous drying and storage:

Drying with continuous grain flow driers - inputs required include electricity and some type of fuel to produce heat (e.g., diesel, natural gas, biomass, etc.).

Gasification:

The process used to convert a biomass into a gas.

Natural drying:

Drying of feedstock without any additional external energy inputs.

Annex 1: Updates in Calculator Version 2.0

Build 27 – Issued April 2014

Default Fuel Chains

- Long Rotation Forestry chains: the default fuel chains for Broadleaf and Conifer LRF have been completed by introducing default values for cultivation and harvesting modules. The default chain for Russia has been removed.
- SRF default chains for North America: the default fuel chains for SRF in North America have been modified to represent intensely managed loblolly pine plantations in the South East US.
- Sawdust pellet chains: the default fuel chains for sawdust pellets now include a feedstock drying step. Default chains in v1.0 had assumed collection of dry (10% moisture content) sawdust. It is now assumed that the average moisture content of sawdust at collection is 34% (in alignment with the figure used in the Biograce II¹⁴ tool). This value reflects a mixture of wet sawdust from fresh wood and dry sawdust from dry wood. Thus the default chains now assume that drying is required after the point of sawdust collection.

Default data updates

- Electricity requirements for pellet production: the default figures for the electricity required for pellet production (wood, energy grass, bagasse and olive cake pellets) have all been revised. These default figures account for the electricity required for feedstock grinding, pelleting and cooling only (i.e. no drying component).
- Additional transport modes: several additional transport modes have been added: Shipping – Bulk Carrier “Handysize” – wood chips; Shipping – Bulk Carrier “Supramax” – wood chips; Shipping – Bulk Carrier “Supramax” – pellets; Shipping – Ocean bulk carrier Panamax; Rail – Electric. The Energy Intensity defaults have all been taken from Biograce II.
- Cultivation assumptions for miscanthus: the default figure for N fertiliser application rate has been revised for miscanthus.
- Transport/processing efficiencies: the assumed raw material losses in transport and processing steps have been revised. These figures are now

¹⁴ The Biograce projects aim to harmonise bioenergy greenhouse gas (GHG) emission calculations in Europe. The Biograce II project is concerned with GHG emissions for electricity, heating and cooling from biomass. The Biograce II Excel calculation tool contains standard and default values for parameters relevant to the GHG assessment of bioenergy fuel chains. For more information visit: <http://biograce.net/app/webroot/biograce2/>

aligned with those assumed in the corresponding fuel chains in the Biograce II tool.

- Forestry residue chains - diesel use defaults in harvesting module: the diesel requirements for collection and baling of feedstocks classified as 'forestry residues' (branches, tops and bark; diseased wood and storm salvage; thinnings from woodlands, forests or plantations; tree stumps) have been reduced to encompass only the energy requirements for collection and baling.
- CH₄/N₂O exhaust gas emissions: default values for exhaust gas emissions have been updated for all transport modes to align with the assumptions applied in Biograce II.

General calculator features

- Flags for stations $\geq 1\text{MWe}$: a new field has been introduced in the 'Electricity' module asking the user whether the total installed capacity of the plant in question is 1MWe or greater. If the user selects 'Yes' then flags will appear beside subsequent fields which require the user to enter actual data.
- Updates to feedstock/gas transport modules: some clarification flags have been introduced to the transport modules to provide guidance to users on how the various parameters impact the transport emission calculation.
- Harmonising ordering within project reports: the order in which various batches are presented under the 'Data report' heading is now aligned with the order in the 'Detailed report' section.
- Change of units for 'Contribution of this module to fuel chain:': The units for this parameter in the summary screen have changed from kg(CO₂e)/t(output) to kg(CO₂e)/t(fuel) (note that the units are kg(CO₂e)/MJ(fuel) in the case of the gas chains). This change is intended to make it clear whether the emissions reported are referring to the emissions per unit of output product from that particular module, or to emissions per unit of final fuel produced.
- Referencing: additional references and explanatory notes have been included for many default values and chains
- Co-products: new co-product 'other' included to allow users to define their own co-products.

For further detail and references please see notes within the calculator application

Default Fuel Chains

- Whole crop rye: new default chains have been introduced for whole crop rye in the production of biogas and biomethane.
- Straw pellets: a new default chain for straw pellets has been included.

Default data updates

- Emission Factors for various inputs: several emission factors for fertilisers, pesticides and chemicals have been updated to align with the latest values presented in the Biograce II tool. These include N, P & K fertilisers, Lime fertiliser, pesticides, seeds, and several chemical inputs.
- Lower heating values: the lower heating values (LHVs) for several biomass forms have been updated to align with those set out in the Biograce II tool. These include bagasse, bagasse pellets, biogas, biomethane, energy grass bales, energy grass chips, energy grass pellets, straw bales, wood briquettes, wood chips, wood pellets.
- Default moisture contents: the default moisture contents of some feedstocks have been revised, including bagasse and wet manure.
- Biogas & biomethane default data: several updates have been made to the default assumptions in these chains, including:
 - biogas yields have been updated for all feedstocks
 - diesel use in ensiling step for maize and wheat has been revised downwards. Ensiling efficiency has also been aligned with that used for maize in the Biograce II tool
 - transport distances from silage clamp to biogas plant have been set at 20km, aligned with the assumption in Biograce II

General calculator features

- Automatic update of drying energy inputs with moisture content alterations: the primary update to the functionality of the tool is a new flexibility introduced within the drying modules. If a user adjusts the initial or final moisture content of a feedstock, or adjusts the process fuel for drying, the energy requirements for the drying process will automatically update.
- Natural drying limitation warning: a warning flag has been introduced in cases where a fuel chain assumes unrealistic levels of natural drying for a feedstock (i.e. beyond the realistic levels of moisture content achievable through natural drying alone).
- Storage module: a dedicated 'storage' module has been introduced into the tool. This includes a field for entering fugitive methane emissions associated with the storage of feedstock.
- Heat co-produced with useful electricity calculation: in the 'fuel chain – heat' summary modules, the allocation calculation for 'heat co-produced

with useful electricity' has been updated to align with the approach set out in SEC(2010) 65-66 (report from the Commission to the Council and the European Parliament on sustainability requirements for the use of solid and gaseous biomass sources in electricity, heating and cooling)

- Carbon capture and replacement/storage field: the processing modules now feature a dedicated 'carbon capture and replacement / storage' field to allow users to account for these elements of the GHG calculation if applicable.
- Default modes/fuels in transport modules: each transport mode now has a default fuel type associated with it which will update automatically in the 'fuel information' field when transport mode is changed.
- Digestate co-product: several digestate options have been introduced to the co-product field, along with indicative LHVs. Some warning text has been introduced to notify users about the methodological issues regarding allocation of emissions to digestate.
- Torrefied products and biopropane: three new biomass forms have been introduced – torrefied pellets, torrefied chips and biopropane. No default fuel chains exist yet for these fuels.
- 12 ton truck: a new transport mode '12 ton truck' has been introduced