

# *Superclip Centurion*

*Latest Version of user manual & superclip updates are always available at:- <http://www.superclip2.com>*

*User Manual: Superclip/Centurion  
9<sup>th</sup> Nov 2006*

*For Latest Update V7.20*

## **Superclip Updates by EMAIL.**

You can now subscribe to our **“Superclip Bulletin Service”**, by registering your email address, you will receive updates direct to your mail box as soon as they are released !!!

Please goto <http://www.superclip2.com/support/bulletins.shtml>

**We will also notify you when new user manuals are available, or information relating to the operation of your New Superclip.**

# Introduction.

Your new clip is a universal device for removing the network/SIM locks from a variety of models of mobile phones from different networks. Your new superclip is equipped with 2 types of communication protocols, Serial and USB, this is 1 of the first clips equipped with both.

## Your Superclip will support the following phones:-

- **LG** 8110, 8120, & 8130
- **LG-2G** B2000, B2050, B2100, C2100, C2200, C3300, C3310, C3320, C3400, C1100, C1200, C1400, C3100, F2100, F2300, F2400, G5600, G1500, G1600, G3100, G510, G5200, G5220, G5300, G5400, G7070, G7100, L3100, L341i, L342i, W3000, W3100, W5200, W5220, W5300, W5400
- **Motorola** T191, V60, V66, Ti280, V300, 400, 500, 525, 600, C220, V80
- **Nokia** DCT3 & DCT4
- **Panasonic** X60
- **Samsung** E800, A1xx, A300, A400, A800, V200, Q200, S10x, S200, S300, N1xx, N5xx, R2xx, Txxx, C100 & SGH Series, E800, E810, D500, E720, E330, Z105, Z107, E530, E330
- **Sendo** 3 & 5 series
- **Sharp** GX10, GX15, GX20, GX25, GX30, TM100, TM150
- **Sony-Ericsson**
  - V600i, Z1010, Z800, Z500 V800, V802SE, Z800i, Z1010i, Z1010c, Z500i, Z500a, Z500c, Z600 and Z608
  - F500i, K500i, K500c, K506c, K508i, K508c, K700i and K700c
  - S700i, S700c and S710a
- **VK207i**
- **NEC-3g**. 228, 338, 313, 616, 616v (338 v4 support on firmware v5.60 with lg/se option activated)
  - **Newgen C800**
  - **NEC 338 V4**
  - **Lobster unlock, 485, 575, 544**
  - **Total LG Unlock, incl KG800 chocolate Clip**
  - **LG-3g Total unlock**
  - **8110, 8120, 8130, 8138, 8180, 8330, 8360, 8380**
  - **Sony-Ericsson, CID 36/37 unlock**

With USA Update V7.20 Optional Update Activated these phones are supported

- **PANTECH C300 (all versions)** G700, PG1500, PG3200 not tested
  - **Motorola Iden**
  - **Total LG2g (incl. USA Variants)**
-

### Through Out This Guide Certain Terms Will Be Used To Avoid Confusion:

<b>TARGET PHONE:</b>	“the phone being unlocked”
<b>DEVICE:</b>	“Superclip, the unlock clip”
<b>ADAPTOR:</b>	“cable that connects the DEVICE to the Phone connectors and to its Data Cable”

### Technical Support & Help: Important Information !!!!!

Please before phoning for help or technical support check first that you have the latest update installed on your superclip !!!!!

1. Goto <http://www.superclip2.com> and download the latest updates and install them on your superclip.
2. Download the latest user manual from <http://www.superclip2.com>, and check that the information you require is not in there before phoning your supplier.

### Powering Your Centurion Clip

Please use a 9V PP3 Battery and the supplied cable to power your Centurion Clip

## Superclip & Superclip 2 User Manual

### Unlocking Phones

Please read the specific instructions for each type of phone, it is very important to follow instructions to the letter.

#### Points to remember when using your Superclip !!!

1. Always power your clip with a descent Battery, failure to do so could result in your clip failing during unlocking.
2. Always make sure the target phone you are unlocking has a full charge, damage can result if the phone fails during unlocking.
3. Always remove the SIM card from the phone. (unless otherwise instructed)
4. Never interrupt the connection between the Superclip and the target phone during unlocking, damage to the target phone could result.
5. **Never attempt to unlock a phone without checking the user manual for specific instructions for that model.**
6. Check regularly for new updates and instructions from <http://www.superclip2.com>

### LED Phone Mode Table

Before unlocking a phone with the superclip, you must select the correct mode, the mode of the superclip is displayed by the state of it's 4 LEDs, you simply press the "Select" button to change the Superclip's mode.

**NEVER ATTEMPT TO UNLOCK A PHONE WITH OUT READING FULLY THE SPECIFIC INSTRUCTIONS FOR THAT MODEL !!!!**

CLIP MODE	LED-1	LED-2	LED-3	LED-4
Nokia DCT3 Unlock	off	off	off	on
Nokia DCT4 Unlock	off	off	on	off
Nokia DCT4 Security Code Reset	off	off	on	on
Sony Ericsson	off	on	off	on
Samsung A1XX, A3XX, A4XX Unlock	on	off	off	on
Samsung A800 Unlock	on	off	on	off
Samsung Q/V/SXXX, P4XX, E710 Unlock	on	off	on	on
Samsung E700, E800, SGHx600 Unlock	on	on	off	on
Samsung C100 Unlock	on	on	on	on
Samsung E720	blinking	off	off	off
Samsung E330	off	on	off	on
Samsung Z105, Z107	blinking	blinking	off	off
Sharp GX-1, GX-10, GX10i Unlock	blinking	off	off	on
Sharp GX20 Unlock	blinking	off	on	off
Sharp GX30 Unlock	blinking	off	on	on
Panasonic X60 Unlock	blinking	on	off	off
Sendo Unlock	blinking	on	off	on
LG 8110, 8120, 8130 etc. Unlock	blinking	on	on	off
LG-2G	off	on	on	on
Motorola P2k (V60, V66, V70 & Ti280 etc.) Unlock	blinking	on	on	on
Motorola V300, V400, V500, V525, V600, Sharp GX15 Unlock	blinking	blinking	off	off
Motorola V220, V80 Unlock	blinking	blinking	off	on
VK207, VK530	blinking	blinking	on	off
NEC-3g	blinking	blinking	on	on
<b>(V6.50) With Optional Update Active</b>				
Benq-Siemens E61	Blinking	Blinking	blinking	Off
Lobster, 485, 575, 544	On	Off	Off	Off
Total LG: - Group 1, Group 2, Group 3	Off	On	On	Off
Total LG: - Group 4, Group 5	Off	On	On	On
<b>MOTOROLA IDEN</b>	Blinking	On	On	Off
<b>Pantech C300</b>	Blinking	Blinking	Blinking	On
LG 8180, 8330	Of	On	Off	On
LG 8110, 8120, 8130, 8138	Off	On	Off	On
NEC 338 V4 (also all other NEC 3g)	Blinking	Blinking	On	On
Sony Ericsson CID36/37	Off	On	Off	On

## Superclip & Superclip 2 User Manual

---

### **Pantech C300**

**Models:** Pantech C300, G700, PG1500, PG3200 *not tested*  
**Clip Firmware:** V7.20 Centurion USA Edition  
**LED Sequence:** **Blink, Blink, Blink, On**  
**Phone:** Powered Off  
**Connector:** C300 Pantech

1. Switch on the Superclip and select **Pantech**
2. Connect up the phone. (No SIM, Battery removed)
3. Press "Enter" button.
4. Insert Battery into phone
5. Wait for Superclip's LEDs to return to mode indication.
6. Phone unlocked.

### **Motorola Iden**

**Models:** 850, i450, R9 & R8: i355, i605, i710, i530, i530, i305, i833, i835, i415, i275, i860, i860 Woody, i860 Tattoo, i830, i830 Roxy, i730, i285, i215, i205, i305, i530, i710, i325, i315, i600, i390, i370, i1000, i1000plus, i500plus, i700plus, i2000plus, r750plus, iX1000, i550plus, i2000, i85s, i50sx, i55sr, i80s, i90c, i85s, i80s, i30sx, i35s, i95cl, i60c, i90c, i88s...ect  
**Clip Firmware:** V7.20 Centurion USA Edition  
**LED Sequence:** **Blink, On, On, Off**  
**Phone:** Powered Off  
**Connector:** Motorola Iden

1. Switch on the Superclip and select **IDEN**
  2. Connect up the phone. (No SIM, Powered ON)
  3. Press "Enter" button.
  4. Wait for Superclip's LEDs to return to mode indication.
  5. Phone unlocked.
-

## Superclip & Superclip 2 User Manual

### Total LG 2g Unlock

**Models:** Group 1, Group 2, Group 3  
**Clip Firmware:** V6.50 or above with optional update Activated  
**LED Sequence:** **Off, On, On, Off**  
**Phone:** Powered Off  
**Connector:** PS2, LG cables, 510, 7050 & KG 800

**Models:** Group 4, Group 5  
**Clip Firmware:** V6.50 or above with optional update Activated  
**LED Sequence:** **Off, On, On, On**  
**Phone:** Powered Off  
**Connector:** PS2, LG cables, 510, 7050 & KG 800

LG 2g GSM phones are grouped into 5 separate groups for unlocking  
Each Group as it's stage on LG Total Unlock Mode on the Superclip

Stage Identification:- (count the stages)

- Waiting for ignition:- **slow alternating between 2 & 3**
- About to change to next stage:- **Fast alternating between 2 & 3**

The Clip will run through the stages when you select LG total 1 or LG Total 2 and press the enter button.

Stage 1 a Group 1	Stage 1b Group 2	Stage 1c Group 3	Stage 2a Group 4	Stage 2b Group 5
LG-CG225 LG-C1500 LG-L1200 LG-C1200 LG-F7200 LG-MG200 LG-L342i LG-C1400 LG-Cg300 LG-M6100 LG-L341 LG-G510 LG-F1200 LG-MG105 LG-F2400 LG-G1500 LG-Kg810 LG-A7110 LG-B2100 LG-G1600 LG-Mg810 LG-A7150 LG-C2100 LG-W3000 LG-Mg530 LG-B2070 LG-C3320 LG-GW3100 LG-MG155 LG-B2150 LG-F2100 LG-C3100 LG-KG800 LG-B2250 LG-F2300 LG-G4010 LG-KG320 LG-C1150 LG-F7250 LG-G4050 LG-ME591 LG-C1300i LG-C3300 LG-GW5200 LG-G7120 LG1300i LG-C3310 LG-GW5220 LG-F2250 LG-C3380 LG-C3400 LG-GW5300 LG-F3000 LG-L1400 LG-B2000 LG-GW5310 LG-MG100 LG-F9100 LG-B2050 LG-GW5400 LG-ME500 LG-M4410 LG-L5100 LG-G5500 LG-KG210 LG-MG191 LG-L3100 LG-G7000 LG-KG225 LG-P7200 LG-C2200 LG-G7020 LG-KG220 LG-S5000 LG-L1100 LG-G7030 LG-CE500 LG-S5200 LG-B1200 LG-G7050 LG-MG105 LG-F2200 LG-B1300 LG-G7070 LG-M6100 LG-G7200 LG-C1100 LG-G7100 LG-G7120	KG220	KG800	C1300 C2000 F7250 F9100 G4010 G7020 G4011 G4020 G4050 G5500 G7000 G7030 G7050 L1100 L1400 L5100 T5100  (usa models)	Ce500 LG7110 VX5200 C2000 C1500 AX5000

6. Switch on the Superclip and select **Total LG 1 or Total LG 2** (depending on model)
7. Connect up the phone. (No SIM, Powered OFF)
8. Press "Enter" button.
9. Wait for correct LG mode/stage for the target phone on the Superclip
10. Press "Power" button and hold on phone.
11. Wait for Superclip's LEDs to return to mode indication.
12. Phone unlocked.

### Factory Reset

If the phone is still locked then power on phone and enter 2945## select factory reset

**This only for clips with V6.50 optional update Active !!!!**

### **Benq E61**

<b>Models:</b>	Benq-Siemens E61
<b>Clip Firmware</b>	V6.10 or above with optional update Activated
<b>LED Sequence:</b>	<b>Blink, Blink, Blink, Off</b>
<b>Phone:</b>	Powered Off
<b>Connector</b>	PS2, 02-X2, M300 type

13. Switch on the Superclip and select **BenQ**
14. Connect up the phone. (No SIM, Powered OFF)
15. Press "Enter" button.
16. Press "Power" button and hold on phone.
17. Wait for Superclip's LEDs to return to mode indication.
18. Phone unlocked.

### **LG 8180 8330 Unlock**

<b>Models:</b>	LG 8180, 8330 all versions
<b>Clip Firmware</b>	V5.60 or above with optional update Activated
<b>LED Sequence:</b>	<b>Off, On, Off, On</b>
<b>Phone:</b>	Powered Off
<b>Connector</b>	PS2, LG8110 Connector

1. Switch on the Superclip and select **LG**
2. Connect up the phone. (No SIM, Powered OFF)
3. Press "Enter" button.
4. Press "Power" button on phone.
5. Wait for Superclip's LEDs to return to mode indication.
6. Phone unlocked.

### **LG 8110, 8120, 8130, 8138 Unlock**

<b>Models:</b>	LG 8110, 8120, 8130, 8138 all versions
<b>Clip Firmware</b>	V5.60 or above with optional update Activated
<b>LED Sequence:</b>	<b>Off, On, Off, On,</b>
<b>Phone:</b>	Powered Off
<b>Connector</b>	PS2, LG8110 Connector

1. Switch on the Superclip and select **LG**
  2. Connect up the phone. (No SIM, Powered OFF)
  3. Press "Enter" button.
  4. Press "Power" button on phone.
  5. Wait for Superclip's LEDs to return to mode indication.
  6. Phone unlocked.
-

### **Lobster Unlock Procedure**

**Models:** Lobster, 485, 575, 544  
**Clip Firmware** V6.50 or above with optional update Activated  
**LED Sequence:** **On, Off, Off, Off**  
**Phone:** Powered Off  
**Connector** PS2, Lobster Connector (3 types 485, 575, 544)

Lobster phones are grouped into 2 separate groups for unlocking  
Each Group as it's stage on Lobster Unlock Mode on the Superclip

Stage identification:- (count the stages)

- Waiting for ignition:- **slow alternating between 2 & 3**
- About to change to next stage:- **Fast alternating between 2 & 3**

The Clip will run through the stages when you select LOBSTER and press the enter button.

Stage 1 / Group 1	Stage 2 / Group 2
485, 575	544

1. Switch on the Superclip and select **Lobster**
2. Connect up the phone. (No SIM, Powered OFF)
3. Press "Enter" button.
4. Press "Power" button on phone.
5. Wait for Superclip's LEDs to return to mode indication.

Phone unlocked.

***This only for clips with V6.50 optional update Active !!!!***

### **NEC-3g incl. 338 V4 NEC-3g Unlock**

**Models:** 228, 338, 313, 616 & 616v (338 V4 supported)  
**LED Sequence:** **Blinking, Blinking, On, On**  
**Clip Firmware** V5.60 or above with optional update Activated  
**Phone:** Powered on  
**Connector** PS2, GX-30 connector

1. Switch the Superclip on and select **NEC-3G mode**
2. Ensure the Target phone is Powered On with no SIM
3. Connect to the Superclip.
4. Press the "Enter" button.
5. Wait for NEC to power down
6. Phone Unlocked

***This only for clips with SE/LG CID36/37 optional update Active, with firmware V5.60 !!!!***

---



## Superclip & Superclip 2 User Manual

---

### Sony Ericsson CID 36/37

This is the optional SE update with V6.50 software, this update replaces all Sony-Ericsson options on the next page, if you have not purchased this update please go to the next page for SE instructions.

#### Total Sony Ericsson Unlock

Update V6.50 or later must be installed on your Superclip and purchased activation, to use this option. (use instructions on next page for SE if you have not)

Models:	<ul style="list-style-type: none"><li>• W800</li><li>• K600i, K608i, K300, K300i, K500, K750i, D750, D750i</li><li>• J300i, J300a, J300c, J200, J200i, J200</li><li>• V600i, Z1010, Z800, Z500 V800, V802SE, Z800i, Z1010i, Z1010c, Z500i, Z500a, Z500c, Z600 and Z608</li><li>• F500i, K500i, K500c, K506c, K508i, K508c, K700i and K700c</li><li>• S700i, S700c and S710a</li></ul>
LED Sequence:	<b>Off, On, Off, On,</b>
Clip Firmware	V6.50 or above with SE/LG CID36/37 option Activated
Phone:	Powered Off (Fully Charged Battery)
Connector	PS2, Ericsson connector, K750 connector.

Always turn Sony Ericsson phones on before unlocking (especially K700i) new handsets are not fully calibrated until the first time they are switched on after being flashed in the factory (new handsets will display "please wait" and a progress bar) if you unlock the phone before calibration is complete you will need to re-flash the phone.

#### Phones with older style SE connection

1. Switch on the Superclip and select Total Sony-Ericsson
2. Connect up the phone. (No SIM, Powered Off)
3. Press the "Enter" button
4. Wait for Superclip's LEDs to return to mode indication
5. Phone Unlocked

If LEDS 1 and 4 Flash at end of the process complete the following with out turning the phone on

1. Remove phone battery
2. Select Sony-Ericsson
3. Press "Enter" button
4. Insert battery into phone
5. Wait for all 4 LEDs on, then wait for LED 1 before removing phone.

#### Phones with newer style K750 SE connection

1. Switch on the Superclip and select Total Sony-Ericsson
2. Connect up the phone. (No SIM, Powered Off)
3. Press the "Enter" button
4. When Superclip LEDS blink power on the phone
5. Wait for Superclip's LEDs to return to mode indication
6. Phone Unlocked

If LEDS 1 and 4 Flash at end of the process complete the following with out turning the phone on

6. Remove phone battery
7. Select Sony-Ericsson
8. Press "Enter" button
9. Insert battery into phone
10. Wait for all 4 LEDs on, then wait for LED 1 before removing phone.

**(some may require the process twice, new phones always insert sim and allow to log onto network before unlocking)**

#### Tips & Tricks

You can check, the CID version on most SE phones by entering the service menu

You the following key sequence (where > means menu right, < means menu left)

>\* << <\* <\*

(cid 49 not supported)

### Nokia

#### Unlocking Nokia DCT-3 Phones

**Models:** See List [Here](#)

**LED**

**Sequence:** Off, Off, Off, On

**Phone:** Powered On

1. Switch on the Superclip and select **Nokia DCT3**
2. Connect the phone (no SIM powered on)
3. Press "ENTER" button.
4. Wait for Superclips LEDSto return to mode indication
5. Phone Unlocked

*Note: If unlock fails switch phone on after connecting to the superclip, as soon as the phones backlights come on press the "Enter" button on the Superclip.*

---

#### Unlocking Nokia DCT-4 Phones

**Models:** See List [Here](#)

**LED**

**Sequence:** Off, Off, On, Off

**Phone:** Powered On

1. Switch on the Superclip and select **Nokia DCT4**
2. Connect the phone (no SIM powered on)
3. Press "ENTER" button.
4. Wait for Superclips LEDSto return to mode indication
5. Phone Unlocked

#### Reset Security Code Nokia DCT-4 Phones

**Models:** See List [Here](#)

**LED**

**Sequence:** Off, Off, On, On

**Phone:** Powered On

1. Switch on the Superclip and select **Nokia DCT4 Security Code Reset**
2. Connect the phone (no SIM powered on)
3. Press "ENTER" button.
4. Wait for Superclips LEDSto return to mode indication
5. Security Code Reset To Factory Default (1234)

**The following phones are BB5 not DCT4 and can not be unlocked:-**

6270, 6280, 6630, 6680, 6681, 6682, 7370, N70, N71, N90, E60, E61, E70, N80, N91, N92

---

#### Nokia DCT-3 Phones

The previous generation of Nokia Phones to those currently marketed by Nokia. *This list is not comprehensive*

2100 - NAM-2	3210 - NSE-8	3310 - NHM-5
3330 - NHM-6	3390 - NPB-1	3410 - NHM-2
5110 - NSE-1	5130 - NSK-1	5190 - NSB-1
5210 - NPM-5	6150 - NSM-1	6190 - NSB-3
6210 - NPE-3	7110 - NSE-5	8210 - NSM-3
8250 - HSM-3D	8290 - NSB-7	8850 - NSM-2
8890 - NSB-6	9210 - RAE-3N	

#### Nokia DCT-4 Phones

The latest and current generation of phones from Nokia. *This list is not comprehensive.*

3320 - NPC-1	3360 - NPW-1	3510 - NHM-8
--------------	--------------	--------------

---

## Superclip & Superclip 2 User Manual

---

3510i - RH9	3590 - NPM-8	3650 - NHL-8
5100 - NPM-6	6100 - NPL-2	6310 - NPE-4
6310i - NPL-1	6340 - RH13	6360 - NPW-2
6510 - NPM-9	6590i - NSM-9	6610 - NHL-4U
6800 - NHL-6	7210 - NHL-4	7250 - NHL-4J
7650 - NHL-2	8310 - NHM-7	8390 - NSB-8
8910 - NHM-4	8910i - NHM-4NX	6600-
7600	7610	N-Gage
N-Gage-QD	5140	6820

### Nokia Connector Compatibility Chart,

Not all Nokia phones have a unique connector, please use the chart below, to check for compatible connectors.

- \* 1100, 1100a, 1100b, 1101, 1110, 1600, 2300, 2300a, 2600
- \* 1220, 1260, 2220, 3320, 3360
- \* 2100, 3610, 5210, 8210, 8250, 8290, 8850, 8855, 8890
- \* 2112, 3100, 3100b, 3108, 3120, 6100, 6108
- \* 2280
- \* 2650, 2651
- \* 3200, 3200b, 6200, 6220, 6610, 6610i, 7210, 7250, 7250i
- \* 3210
- \* 3220, 3220b, 6020, 6020b, 6021, 7260
- \* 3230
- \* 3250
- \* 3300, 3300b
- \* 3310, 3315, 3330, 3350, 3390, 3410, 5510
- \* 3320
- \* 3510, 3510i, 3530, 3590, 3595
- \* 3586i
- \* 3600, 3650, 3660
- \* 5100, 5100a
- \* 5110, 5110i, 5130, 5190, 6110, 6130, 6150, 6190, 6210, 6250, 7110
- \* 5140, 5140b, 5140i
- \* 6030, 6030a (1100 cable works if plastic is cut down)
- \* 6060
- \* 6101, 6102
- \* 6111
- \* 6170, 6170b, 7270
- \* 6230, 6230b, 6230i
- \* 6255
- \* 6260
- \* 6310, 6310i, 6340, 6340i, 6360, 6370, 6385
- \* 6510, 8310
- \* 6600
- \* 6620
- \* 6650
- \* 6670, 6670b, 7610, 7610b
- \* 6680, 6681
- \* 6800, 6800a, 6810
- \* 6820a, 6820b
- \* 7200, 7200b
- \* 7280
- \* 7600
- \* 7650
- \* 7710
- \* 8800
- \* 8910, 8910i
- \* N-GAGE
- \* N-GAGE QD

The following phones are BB5 and can not be unlocked:

6270, 6280, 6630, 6680, 6681, 6682, 7370, N70, N71, N90, E60, E61, E70, N80, N91, N92

6170	Griffin/UFS/JAF type cable only available use with PS-2 to Griffin adaptor
7280	Griffin/UFS/JAF type cable only available use with PS-2 to Griffin adaptor
7710	Griffin/UFS/JAF type cable only available use with PS-2 to Griffin adaptor
3230	Griffin/UFS/JAF type cable only available use with PS-2 to Griffin adaptor
8800	Griffin/UFS/JAF type cable only available use with PS-2 to Griffin adaptor
6101	Griffin/UFS/JAF type cable only available use with PS-2 to Griffin adaptor
6111	Griffin/UFS/JAF type cable only available use with PS-2 to Griffin adaptor

### ***Sony-Ericsson (if you are using the latest free firmware V5.00)***

#### **Sony Ericsson T610, T620**

Models: T610, T620  
LED Sequence: **On, Off, On, Off**  
Phone: Powered Off  
Connector PS2, Ericsson connector.

Switch on the Superclip and select Sony-Ericsson T610  
Connect up the phone. (No SIM, Powered Off)  
Press the "Enter" button  
Wait for Superclip's LEDs to return to mode indication.  
Phone Unlocked

#### **Sony Ericsson T230**

Models: T230  
LED Sequence: **On, Off, On, Off**  
Phone: Powered Off  
Connector PS2, Ericsson connector.

Switch on the Superclip and select Sony-Ericsson T230  
Connect up the phone. (No SIM, Powered Off)  
Press the "Enter" button  
Wait for Superclip's LEDs to return to mode indication.  
Phone Unlocked

#### **Sony Ericssons P900 Unlocking**

Models: P900  
LED Sequence: **Off, On, On, On**  
Phone: Powered Off  
Connector PS2, Ericsson connector.

Switch on the Superclip and select Sony-Ericsson P900  
Connect up the phone. (No SIM, Powered Off)  
Press the "Enter" button  
Wait for Superclip's LEDs to return to mode indication.  
Phone Unlocked

#### **Total Sony Ericsson Unlock**

Update V3.90 or later must be installed on your Superclip to use this option.

Models: K500, K500i, K700, K700i, P910, T610 RSA, T630 RSA. etc.  
LED Sequence: **On, Off, Off, Off**  
Phone: Powered Off (Fully Charged Battery)  
Connector PS2, Ericsson connector.

Switch on the Superclip and select Total Sony-Ericsson  
Connect up the phone. (No SIM, Powered Off)  
Press the "Enter" button  
Wait for Superclip's LEDs to return to mode indication.  
Phone Unlocked

#### **Tips & Tricks**

If the phone turns on shortly after pressing enter (sony-ericsson phones), remove the phones battery connect back to the superclip, press Enter then put the battery back into the phone

---

### Samsung

#### Samsung E800

**Models:** E800  
**LED Sequence:** On, On, Off, On  
**Phone:** Powered Off  
**Connector** PS2, E700 Connector

1. Switch on the Superclip and select **Samsung E800** (Samsung E700, E800, SGHx600 option)
2. Press "Enter" button.
3. Connect the phone and press it's power button to power on.
4. Phone should go into "TAT" mode
5. Phone Unlocked.

#### Samsung D500, D600 (D600e not supported)

**Models:** D500, D600  
**LED Sequence:** On, On, Off, On  
**Phone:** Powered Off  
**Connector** PS2, D500 Connector

1. Switch on the Superclip and select **Samsung E800** (Samsung E700, E800, SGHx600 option)
2. Connect the phone.
3. Press "Enter" button.
4. Power on the phone, Phone should go into "TAT" mode
5. Phone Unlocked.

#### Samsung E810

**Models:** E810  
**LED Sequence:** On, On, Off, On  
**Phone:** Powered Off  
**Connector** PS2, E810 Connector

1. Switch on the Superclip and select **Samsung E810** (Samsung E700, E800, SGHx600 option)
2. Connect the phone.
3. Press "Enter" button.
4. Power on the phone, Phone should go into "TAT" mode
5. Phone Unlocked.

#### Samsung E820

**Models:** E820  
**LED Sequence:** On, On, Off, On,  
**Phone:** Powered Off  
**Connector** PS2, E700 Connector

1. Switch on the Superclip and select Samsung E820 (Samsung E700, E800, SGHx600 option)
  2. Connect the phone.
  3. Press "Enter" button.
  4. Power on the phone, Phone should go into "TAT" mode
  5. Phone Unlocked
-

## Superclip & Superclip 2 User Manual

---

### **Samsung E720** (added from Superclip Version 4.00 04/08/05)

**Models:** E720  
**LED Sequence:** **Blinking, Off, Off, Off**  
**Phone:** Powered Off  
**Connector** PS2, E810 Connector

1. Switch on the Superclip and select **Samsung E810** (Samsung E700, E800, SGHx600 option)
2. Connect the phone.
3. Press "Enter" button.
4. Power on the phone, Phone should go into "TAT" mode
5. Phone Unlocked.

### **Samsung E7100** (added from Superclip Version 4.00 04/08/05)

**Models:** E720  
**LED Sequence:** **On, Off, On, On**  
**Phone:** Powered Off  
**Connector** PS2, E700 Connector

1. Switch on the Superclip and select Samsung E710 (Samsung Q/V/SXXX, P4XX, E710 Unlock)
2. Press "Enter" button.
3. Connect the phone (powered on)
4. 4 LEDs come on, to show success
5. Phone Unlocked.

### **Samsung E330 Code Reader** (added from Superclip Version 4.20 12/08/05)

**Models:** E330  
**LED Sequence:** **Off, On, Off, Off**  
**Phone:** Powered Off  
**Connector** PS2, E700 Connector

1. Switch on the Superclip and select **Samsung E330**
2. Connect the phone.
3. Press "Enter" button.
4. Power on the phone, Phone should go into "TAT" mode
5. Codes will be read in 1 second.
6. The clip will then warn you the code is about to be displayed (LEDs will sequence up and down, Knight Rider style)
7. All 4 LEDs will then flash the first number, there will be a 2 second gap between each number.
8. All 4 LEDs will remain on after the last number.

Read the unlock code from the phone using the clip. The superclip will then give you the code on the LEDs of the clip... All 4 LEDs will blink and tell you what number. So for number 4 all 4 LEDs will blink 4 times. For "0" LEDs will flash 10 times.

## Superclip & Superclip 2 User Manual

---

### Samsung S500

**Models:** S500  
**LED Sequence:** On, Off, On, On  
**Phone:** Powered On (try off if phone does not unlock)  
**Connector** PS2, E700 Connector

1. Switch on the Superclip and select **Samsung E820** (Samsung Q/V/SXXX, P4XX, E710 Unlock)
2. Connect the phone.
3. Press "Enter" button.
4. Phone Unlocked.

### Samsung A800

**Models:** A800  
**LED Sequence:** On, Off, On, Off  
**Phone:** Powered On (try off if phone does not unlock)  
**Connector** PS2, A300 Connector

1. Switch on the Superclip and select Samsung A800.
2. Connect the phone.
3. Power on the phone.
4. Press "Enter" button.
5. Phone Unlocked.

### Samsung Z105, Z107 Code Reader (added from Superclip Version 4.20 12/08/05)

**Models:** Z105, Z107  
**LED Sequence:** Blinking, Blinking, Off, Off  
**Phone:** Powered On  
**Connector** Original Z105 USB Cable

1. Switch on the Superclip and select **Samsung Z105**
2. Connect the phone.
3. Press "Enter" button.
4. Codes will be read in 1 second.
5. The clip will then warn you the code is about to be displayed (LEDs will sequence up and down, Knight Rider style)
6. All 4 LEDs will then flash the first number, there will be a 2 second gap between each number.
7. All 4 LEDs will remain on after the last number.

Read the unlock code from the phone using the clip. The superclip will then give you the code on the LEDs of the clip... All 4 LEDs will blink and tell you what number. So for number 4 all 4 LEDs will blink 4 times. For "0" LEDs will flash 10 times.

### Samsung E530 (added from Superclip Version 5.00)

**Models:** E530  
**LED Sequence:** Blinking, Off, Off, Off  
**Phone:** Powered On  
**Connector** PS2, E530 Connector

1. Switch on the Superclip and select **Samsung E530** (Samsung E720 option)
  2. Connect the phone.
  3. Press "Enter" button.
  4. Phone Unlocked.
-

## Superclip & Superclip 2 User Manual

---

### Sharp

#### Sharp GX1, GX10, GX10i

<b>Models:</b>	GX1, GX10, GX10i
<b>LED Sequence:</b>	<b>Blinking, Off, Off, On</b>
<b>Phone:</b>	Powered On
<b>Connector</b>	PS2, GX10 connector ( <i>do not confuse with GX20 looks the same but wired differently</i> )

1. Switch the Superclip on and select Sharp **GX1, GX10**
2. Ensure the Target phone is Powered ON.
3. Connect to the Superclip.
4. Press the "Enter" button.
5. Wait for Superclip's LEDs to return to mode indication.
6. Phone Unlocked

#### Tips & Tricks

If unlock fails try waiting for phone to say "waiting for SIM card" before pressing enter button, If that fails press enter button as soon as phone backlights come on.

#### Sharp GX15, GX17, GX25

<b>Models:</b>	GX15, GX17, GX25
<b>LED Sequence:</b>	<b>Blinking, Blinking, Off, Off</b>
<b>Phone:</b>	Powered On
<b>Connector</b>	USB, GX15 Cable

1. Switch the Superclip on and select **Sharp GX15**
2. Ensure the Target phone is Powered ON
3. Connect to the Superclip
4. Press the "Enter" button
5. You will see "XXXX" on the target phone's screen
6. After 5 seconds press 1. on the target phones keypad
7. Wait a further 5 seconds and press 99 on the phones keypad.
8. Press "Select" on the phones keypad. (Right hand button under LCD)
9. Wait 5 seconds and press number 3 on phones keypad. (you may have to press 1 to confirm)
10. Wait a further 5 seconds and press "Select" on the phones keypad (Right hand button under LCD)
11. After 10 seconds the handset will display "Finished"
12. Wait 5 Seconds and power down the phone, using the top right button on the phones keypad, you will have to press it 3 times.
13. Wait 3 seconds and power the handset back on, and then power off.
14. You may now disconnect the phone from the Superclip.

#### Tips & Tricks

Some GX-15 phones do not appear to go into diag mode (display XXXX), allow the superclip to return to mode indication, then turn the GX15 off and back on, the phone should turn back on in Diag mode.

#### Sharp GX20 Unlocking

<b>Models:</b>	GX20
<b>LED Sequence:</b>	<b>Blinking, Off, On, Off</b>
<b>Phone:</b>	Powered On
<b>Connector</b>	PS2, GX20 Connector ( <i>differant from GX10 connector</i> )

1. Switch the Superclip on and select Sharp **GX20**
  2. Ensure the Target phone is Powered ON.
  3. Connect to the Superclip.
  4. Press the "Enter" button.
  5. Wait for Superclip's LEDs to return to mode indication.
  6. Phone Unlocked
-



### Sharp GX30, TM100, TM150 Unlocking

**Models:** GX30, TM100, TM150  
**LED Sequence:** **Blinking, Off, On, On**  
**Phone:** Powered On  
**Connector** PS2, GX30 Connector

1. Switch the Superclip on and select **Sharp GX15**
2. Ensure the Target phone is Powered ON
3. Connect to the Superclip
4. Press the "Enter" button
5. You will see "XXXX" on the target phone's screen
6. After 5 seconds press 1. on the target phones keypad
7. Wait a further 5 seconds and press 99 on the phones keypad.
8. Press "Select" on the phones keypad. (Right hand button under LCD)
9. Wait 5 seconds and press number 3 on phones keypad.
10. Wait a further 5 seconds and press "Select" on the phones keypad (Right hand button under LCD)
11. After 10 seconds the handset will display "Finished"
12. Wait 5 Seconds and power down the phone, using the top right button on the phones keypad, you will have to press it 3 times.
13. Wait 3 seconds and power the handset back on, and then power off.
14. You may now disconnect the phone from the Superclip

### Panasonic

#### Panasonic X60 Unlock

**Models:** X60,  
**LED Sequence:** **Blinking, On, Off, Off**  
**Phone:** Powered On  
**Connector** Jack Plug (labelled T191)

1. Switch on the Superclip and select Panasonic X60
2. Connect the phone (Powered ON)
3. Press "Enter" button.
4. Wait for Superclips LEDs to return to mode indication.
5. Insert incorrect SIM Card and then power on phone. (1 the phone will not accept)
6. type 52824\*\* to open service menu
7. Enter 00000000 (8 Zero's) into the Network Code
8. Phone Unlocked

#### Panasonic X400 Unlock

**Models:** X400,  
**LED Sequence:** **Blinking, On, Off, Off**  
**Phone:** Powered Off  
**Connector** Jack Plug (labelled T191)

1. Switch on the Superclip and select Panasonic X60
  2. Connect the phone (Powered Off)
  3. Power on the phone while pressing # and \* screen stays white
  4. Press "Enter" button.
  5. LED 2 flashes then 3 then all, and then returns to mode indication.
  6. Phone Unlocked
-

### **Sendo.**

#### **Sendo Unlock**

<b>Models:</b>	M550, M551
<b>LED Sequence:</b>	<b>Blinking, On, Off, On</b>
<b>Phone:</b>	Powered On
<b>Connector</b>	PS2, Sendo Connectors

1. Switch on the Superclip and select **Sendo**
2. Insure the handset is powered OFF
3. Connect the handset to the Superclip
4. Press "Enter" button on the Superclip
5. Power on the handset.
6. Wait for all 4 Superclip's LEDs to flash.
7. Phone Unlocked.

## Superclip & Superclip 2 User Manual

---

**LG** (this is for latest free firmware V5.00)

### LG8110 Unlock

**Models:** LG81XX  
**LED Sequence:** **Blinking, On, On, Off**  
**Phone:** Powered Off  
**Connector** PS2, LG8110 Connector

1. Switch on the Superclip and select **LG**
2. Connect up the phone. (No SIM, Powered OFF)
3. Press "Enter" button.
4. Press "Power" button on phone.
5. Wait for Superclip's LEDs to return to mode indication.
6. Phone unlocked.

### LG8120

(works upto V1.03, Do Not Attempt On Higher Version How to check SW version below)

**Models:** LG81XX  
**LED Sequence:** **Blinking, On, On, Off**  
**Phone:** Powered Off  
**Connector** PS2, LG8110 Connector

1. Switch on the Superclip and select **LG**
2. Connect up the phone. (No SIM, Powered OFF)
3. Press "Enter" button.
4. Press "Power" button on phone.
5. Wait for Superclip's LEDs to return to mode indication.
6. Disconnect Handset from Clip.
7. Power On Handset with a 3G sim in.
8. Enter 2945#\*88110# and press OK 2 times
9. Enter 00000000 (8 Zeros) and press OK.
10. Now Power Off the Handset and fit a 2G sim.
11. Refit battery and power on.
12. Phone Unlocked.

### Read Phone SW Version (LG)

1. Power without SIM
2. Enter 277634#\*#
3. Select SW Ver Info

### Factory reset Phone

1. Phone without SIM
2. Enter 277634#\*#
3. Select factory Reset

### Unlock Menu

1. Phone with SIM inside.
  2. 2945#\*88110#
-

## Superclip & Superclip 2 User Manual

---

**LG-2G** (this is for the latest free version V5.00)

**B2000, B2050, B2100, C2100, C2200, C3300, C3310, C3320, C3400, C1100, C1200, C1400, C3100, F2100, F2300, F2400, G5600, G1500, G1600, G3100, G510, G5200, G5220, G5300, G5400, G7070, G7100, L3100, L341i, L342i, W3000, W3100, W5200, W5220, W5300, W5400 Unlock**

**Models:** LG-2G Models As listed Above  
**LED Sequence:** Off, **On, On, On,**  
**Phone:** Powered Off  
**Connector** PS2, LG510 or LG7050 Connector

1. Switch on the Superclip and select LG 2G.
2. Connect the phone.
3. Press "Enter" button.
4. Hold down the power on the phone for at least 6-8 seconds.
5. Phone Unlocked.
6. Some phones require factory reset to complete unlock, Enter 2945### (phone data may be erased)

**Factory reset before putting SIM in phone !!!**

### Motorola

#### Motorola V Series Unlocking

**Models:** V300, V400, V500, V525, V600  
**LED Sequence:** **Blinking, Blinking, Off, Off**  
**Phone:** Powered On  
**Connector** USB Cable Motorola V-Series Connector

1. Switch on the Superclip and select **Motorola V Series**
2. Connect the phone (Powered ON)
3. Press "Enter" button.
4. Wait for Superclips LEDs to reach **Blink, On, On, Blink**
5. Insert incorrect SIM Card and then power on phone. (1 the phone will not accept)
6. Phone unlocked

#### Motorola V80, V220 unlocking

**Models:** V80, V220  
**LED Sequence:** **Blinking, Blinking, Off, On**  
**Phone:** Powered On  
**Connector** USB Cable (mini USB end)

1. Switch on the Superclip and select **Motorola V80, V20**
2. Connect the phone to the clip.
3. Then power on in test mode by holding down the # key and the \* key at the same time then power on phone.
4. On V80 it must display transfer mode to do a successful unlock.
5. Press the "Enter" button.
6. Wait for Superclip's LEDs to reach **Blink, Blink, Blink, Blink**
7. Phone unlocked

### Tips & Tricks

Some later SW version V220 require the charge to be connected before it will unlock successfully.

### VK-Mobile

#### VK Mobile Unlock

**Models:** VK207, VK207i, VK530, VK570  
**LED Sequence:** **Blinking, Blinking, On, Off**  
**Phone:** Powered On  
**Connector** PS2, VK207 connector (looks like Samsung A300)

1. Switch the Superclip on and select VK207i
2. Ensure the Target phone is Powered On with foreign SIM in (one the phone does not accept).
3. Connect to the Superclip.
4. Press the "Enter" button.
5. Clip will flash briefly , Phone Unlocked.
6. Restart phone

#### Tips & Tricks

**If LEDs 1 & 4 blink while LED 2 stays on, this indicates communication error, open up the VK connector if Pins 1 and 2 are soldered together then cut pin 2.**

**NEC-3g** (this is for the last free version V5.00)

### NEC-3g Unlock

**Models:** 228, 338, 313, 616 & 616v (338 not V.4)

**LED Sequence:** **Blinking, Blinking, On, On**

**Phone:** Powered on

**Connector** PS2, GX-30 connector

7. Switch the Superclip on and select **NEC-3G mode**
8. Ensure the Target phone is Powered On with no SIM
9. Connect to the Superclip.
10. Press the "Enter" button.
11. Wait for NEC to power down
12. Phone Unlocked

**NEC 338 type \*#2820# on NEC 338 to get software version (V4 not supported)**



### Installing Superclip USB Drivers & Update Software.

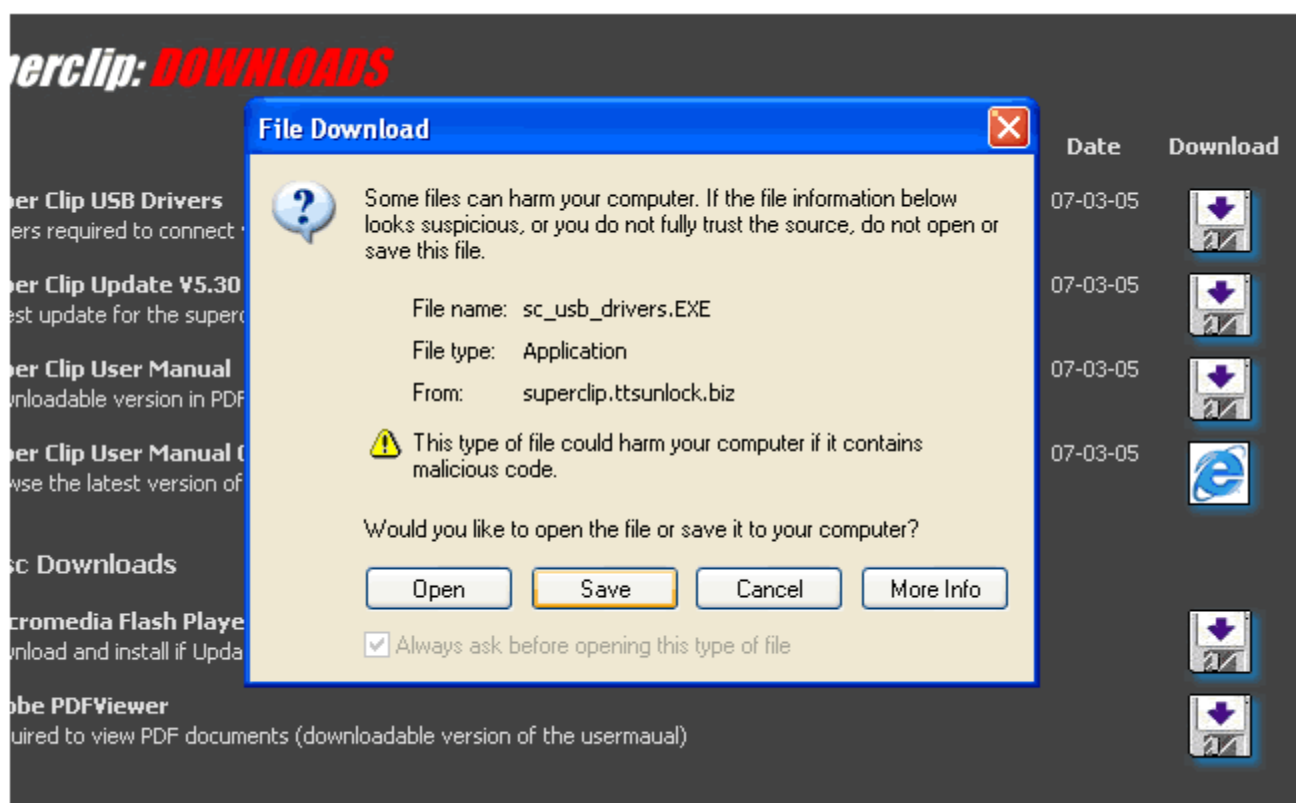
Before you can update your superclip, you must first download and install the necessary software and files on your PC, these are:-

1. Superclip USB drivers.
2. Superclip Update Software.

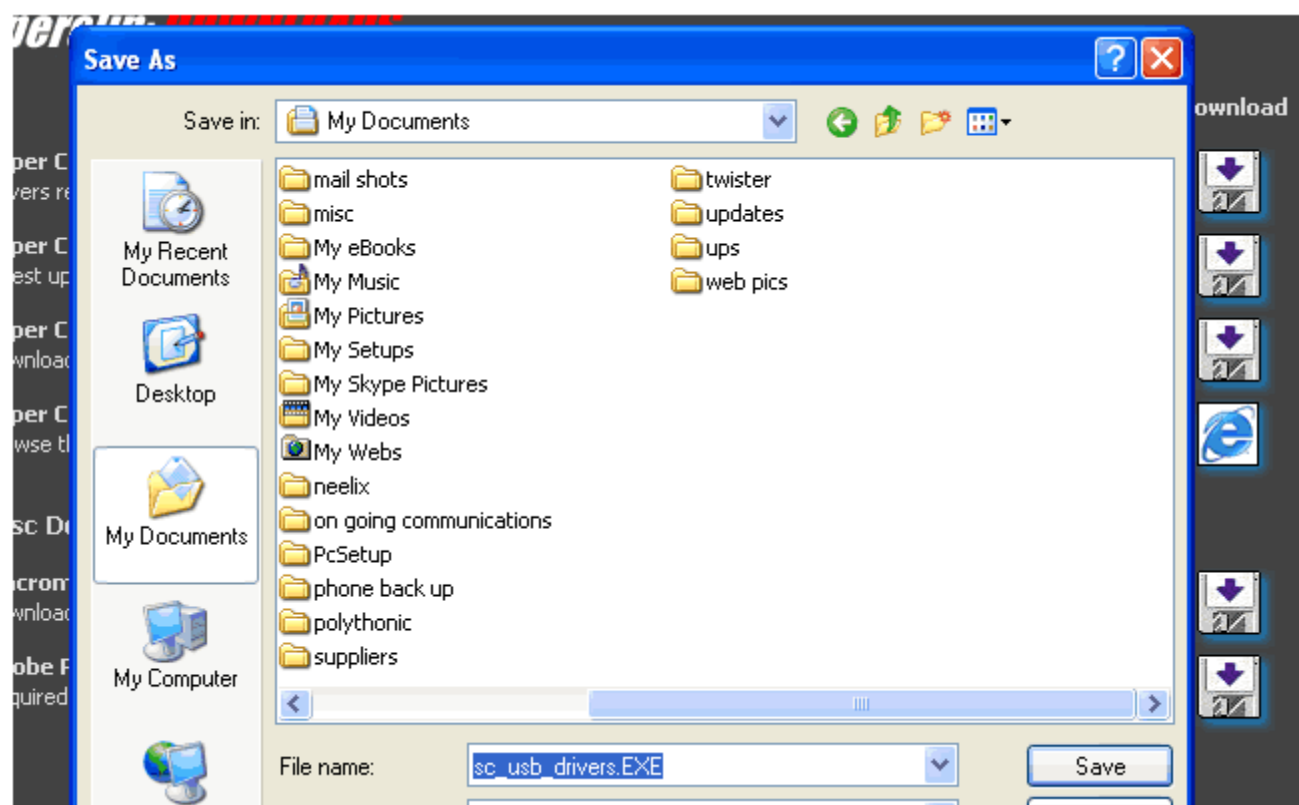
Goto the [downloads](#) page.

Click on the link to download the “Superclip USB Drivers”

When presented with the “File Download” dialogue box click on save.

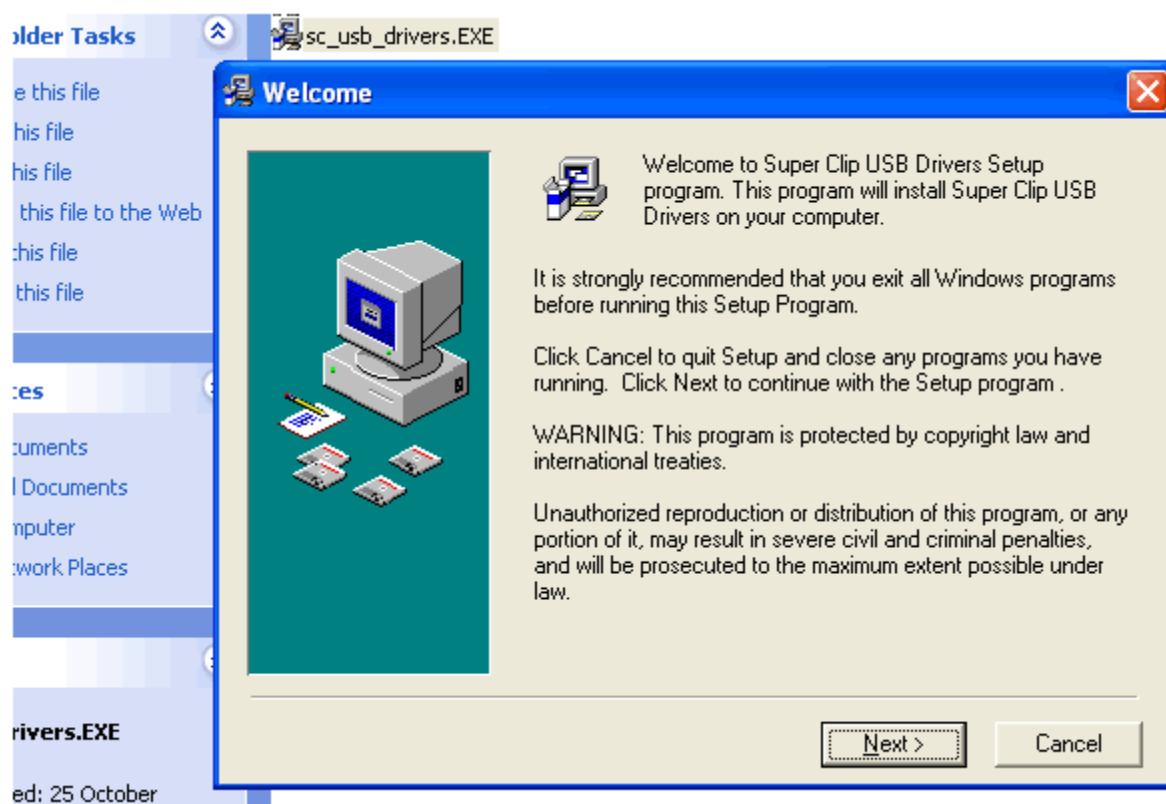


Save the file to your machine, the “My Documents” folder is an ideal place, it will make the file easy to access.



Repeat the above for the “Superclip Update”

Now that we have download the install programs we need to install the SW.

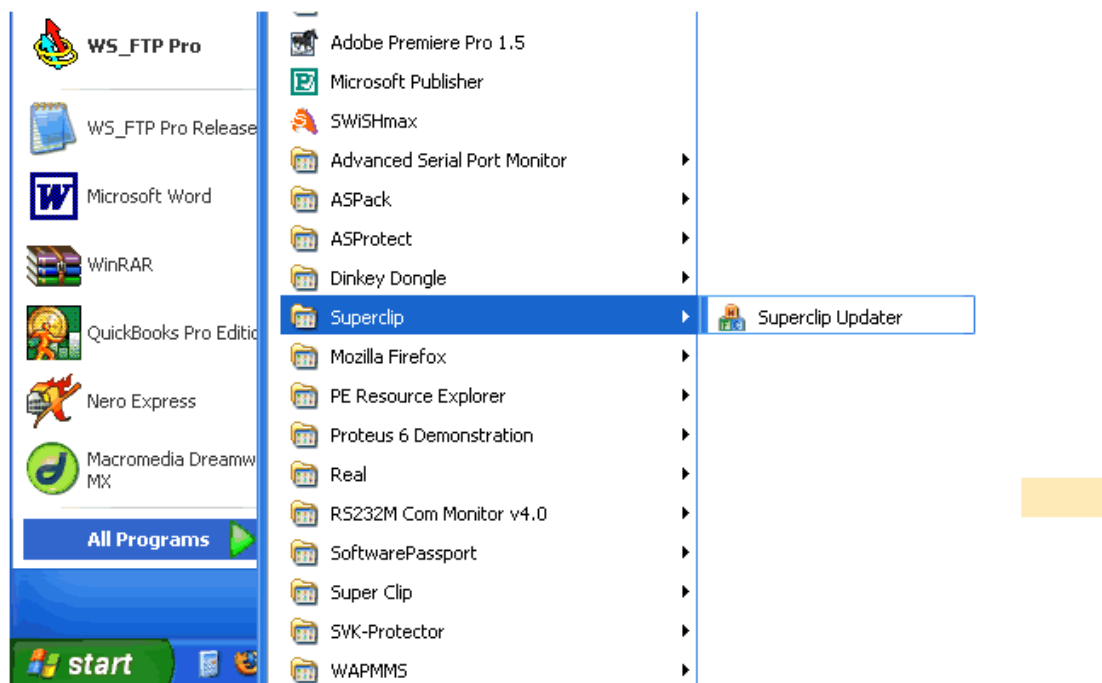


Double click on “sc\_usb\_drivers.EXE” (the superclip USB driver installation program you just downloaded) follow the prompts, until you see the dialogue window telling you the installation has been successful, now click on “Finish”, you have now installed the USB drivers.

## Superclip & Superclip 2 User Manual

---

Now do the same for the Superclip update, double click on "sc\_updater.EXE" and follow the same procedure, until you see the dialogue window telling you the installation has been successful, now click on "Finish", you have now installed the Superclip updater.



The updater SW should appear, if the updater buttons do not change when you place your mouse over them you will need to download and install the "macromedia flash player" from the [downloads page](#).



Then for the correct procedure to update your clip follow the relevant set of instructions below !

If you are connecting your superclip to your PC for the first time, see the following about windows installing your superclip. Installing Your Superclip.

---

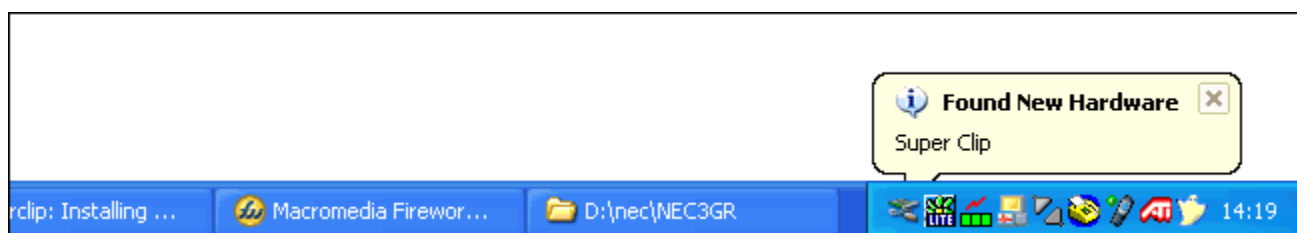
### Installing The SuperClip On Your PC

After the software is installed, windows will need to install your superclip as a new USB device the first time it is connected.

When you get to the stage of connecting the clip to your PC follow this guide.

(you will only need to do this once, the first time you ever connect the superclip to your PC, or to a new PC)

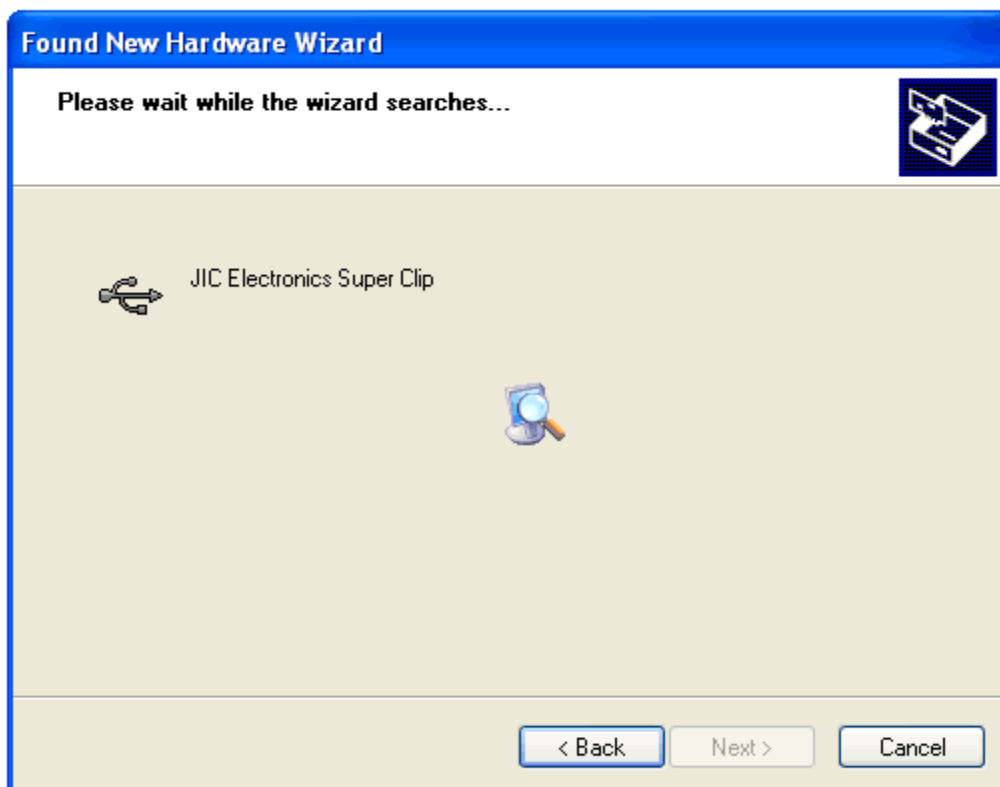
1. When the Superclip is connected to your PC and the enter button is pressed, windows detects the new hardware (if this fails with Centurion clip try inserting the usb cable, then adding the 9v power to the clip in the next 1 to 2 seconds)



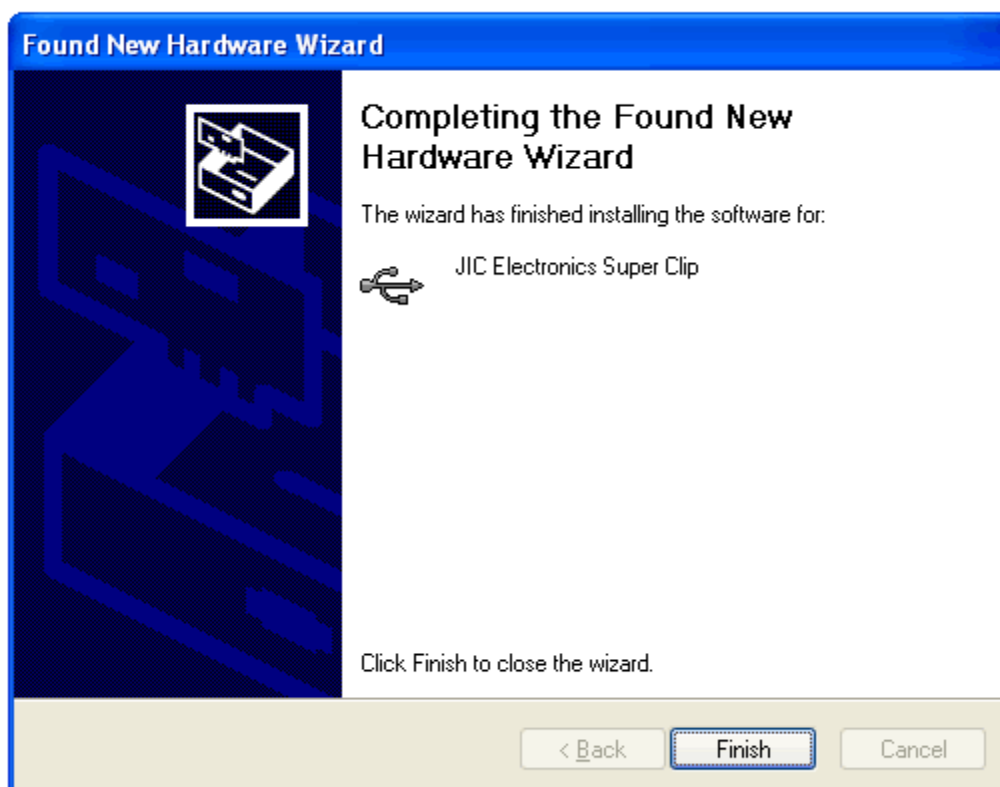
2. A "New Hardware Wizard" dialogue box will appear, leave the selection "Install the software automatically" selected, Click on Next.



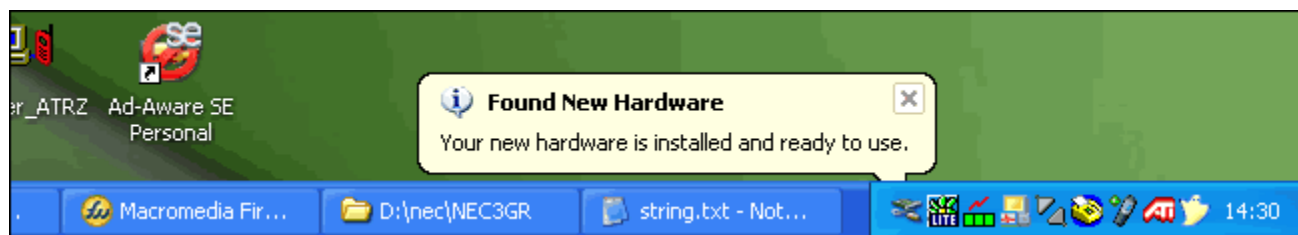
3. Now windows will search for the USB drivers you installed and install the new superclip hardware



4. When the wizard has successfully installed the new hardware click on "Finish".



5. Windows will confirm your Superclip has been installed and is ready for use



### Updating A Blank Clip (*flashing LEDs*)

A blank clip has all 4 LEDs flashing in a fast sequence. Use the following sequence for updating a Blank Clip !!!!

1. Power up the clip by pressing the "Select" button
2. Start the Updater SW (if it is not running already) on your PC.
3. Connect the superclip to your PC, using a Type A-Male to Type A-Male USB cable.
4. All LEDs will change and LED 1 will remain on.
5. The message on the Updater SW will change from "Please Connect The Super Clip" to "Super Clip Connected"
6. Click on the Updater Software the "Enter" button
7. The Updater SW will now update the Clip.



8. Once the clip is updated press and hold "Select" button for about 1 second to turn the superclip off
9. Disconnect from USB cable
10. The clip is now updated

### Updating A Loaded Superclip (*steady lit LEDs*)

This is a superclip that has already previously had an update installed.

1. Make sure you have installed the latest Superclip updater installed, you can download this from [www.superclip.co.uk](http://www.superclip.co.uk)
2. Power up the clip by pressing the "Select" button
3. Start the Updater SW (if it is not running already) on your PC
4. Connect the superclip to your PC, using a Type A-Male to Type A-Male USB cable.
5. Press and hold the "select" and "enter" buttons on the superclip, LED 1, should remain lit, LEDs 2, 3 & 4 should cycle up and down.
6. Release the buttons
7. Now press the enter button on the clip, LED 1 should now remain lit.
8. The message on the Updater SW will change from "Please Connect The Super Clip" to "Super Clip Connected"
9. Click on the Updater Software the "Enter" button
10. The Updater SW will now update the Clip.



11. Once the clip is updated press and hold "Select" button for about 1 second to turn the superclip off
12. Disconnect from USB cable
13. The clip is now updated

### Updating The SuperClip Firmware

Some updates require the firmware in the superclip to be updated.

You will be advised if this is necessary when the update is released.

1. Install the New update.
2. Run the newly installed Updater.
3. Connect the Clip to computer with the USB A to A Cable.
4. Press enter on the clip and LED 1 should light.
5. Now Click on the enter button on the Software.
6. After the clip has updated.

**THE NEXT PART IS VERY IMPORTANT AND MUST BE DONE RIGHT  
THIS WILL ONLY HAPPEN ON THE FIRST UPDATE  
UPDATING AGAIN WILL NOT UPDATE THE FIRMWARE AGAIN**

7. Turn off the Clip by Holding the SELECT button for 1 second then releasing it.
8. Now Disconnect the clip from the USB Cable.
9. Once Disconnected Press the SELECT Button LED 1 Should Flash.
10. Press the SELECT Button Once more and now LED 4 Should Flash.
11. Now Press Enter. (Firmware is now Updated)



## Installing Optional Updates

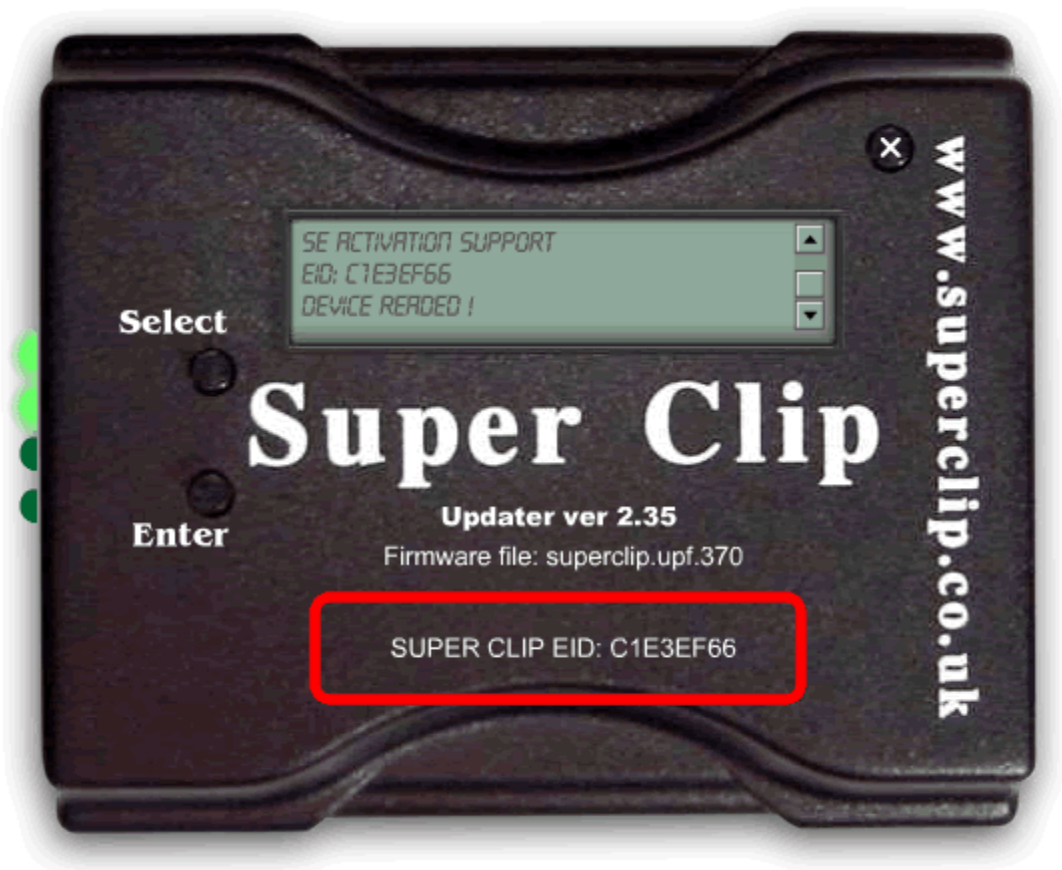
### Notes about V6.10

This is for those have purchased or intend to purchase the Optional Update  
This update requires activation

When you purchase optional Updates for the Superclip, they must be installed and activated for you to be able to use them, the following guide explains how to Install these updates. (for example the USA Update for Pantech & Iden)

Download and Install The latest Update For your Superclip Install the latest update for your superclip and update the firmware if required (how to update firmware guide [here](#))

1. Then have V4.00 updater running and the clip disconnect from the computer
2. Press the SELECT button on the clip until you see BLINK, BLINK, BLINK, ON
3. Then connect the clip to the computer and press ENTER on the clip.
4. LED 1 and 3 will now be lit.
5. Now click Enter on the software.
6. The Updater will now read the EID from the clip and display it in the updating window and also at bottom of
7. Clip Software.



Then email the EID code at the bottom of the software (Highlighted in RED) to your supplier.

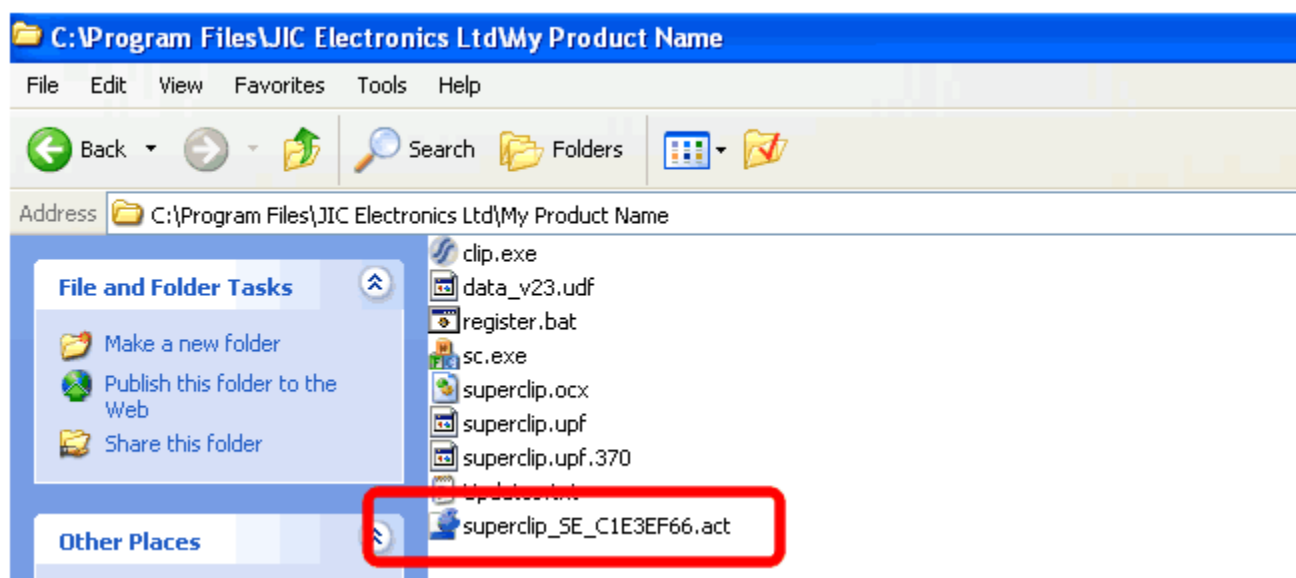
### Uploading the activation file.

Your supplier will then send you an activation file, save this file into the superclip folder on your PC

Continued on next page .....

## Superclip & Superclip 2 User Manual

---



1. Then have the latest updater running and the clip disconnect from the computer
2. Press the SELECT button on the clip until you see BLINK, BLINK, BLINK, ON
3. Then connect the clip to the computer and press ENTER.
4. LED 1 and 3 will now be lit.
5. Now click Enter on the software and the software will now update the clip.



### Clip Updated And Activated !!!

*Note: You can not read the EID again once you have uploaded the activation file, this is normal and correct !!!*

## Superclip & Superclip 2 User Manual

---

NEVER ATTEMPT TO UNLOCK A PHONE WITHOUT READING FULLY THE SPECIFIC INSTRUCTIONS FOR THAT MODEL !!!!

CLIP MODE	LED-1	LED-2	LED-3	LED-4
Nokia DCT3 Unlock	off	off	off	on
Nokia DCT4 Unlock	off	off	on	off
Nokia DCT4 Security Code Reset	off	off	on	on
Sony Ericsson	off	on	off	on
Samsung A1XX, A3XX, A4XX Unlock	on	off	off	on
Samsung A800 Unlock	on	off	on	off
Samsung Q/V/SXXX, P4XX, E710 Unlock	on	off	on	on
Samsung E700, E800, SGHx600 Unlock	on	on	off	on
Samsung C100 Unlock	on	on	on	on
Samsung E720	blinking	off	off	off
Samsung E330	off	on	off	on
Samsung Z105, Z107	blinking	blinking	off	off
Sharp GX-1, GX-10, GX10i Unlock	blinking	off	off	on
Sharp GX20 Unlock	blinking	off	on	off
Sharp GX30 Unlock	blinking	off	on	on
Panasonic X60 Unlock	blinking	on	off	off
Sendo Unlock	blinking	on	off	on
LG 8110, 8120, 8130 etc. Unlock	blinking	on	on	off
LG-2G	off	on	on	on
Motorola P2k (V60, V66, V70 & Ti280 etc.) Unlock	blinking	on	on	on
Motorola V300, V400, V500, V525, V600, Sharp GX15 Unlock	blinking	blinking	off	off
Motorola V220, V80 Unlock	blinking	blinking	off	on
VK207, VK530	blinking	blinking	on	off
NEC-3g	blinking	blinking	on	on
<b>(V6.50) With Optional Update Active</b>				
Benq-Siemens E61	Blinking	Blinking	blinking	Off
Lobster, 485, 575, 544	On	Off	Off	Off
Total LG: - Group 1, Group 2, Group 3	Off	On	On	Off
Total LG: - Group 4, Group 5	Off	On	On	On
<b>MOTOROLA IDEN</b>	Blinking	On	On	Off
<b>Pantech C300</b>	Blinking	Blinking	Blinking	On
LG 8180, 8330	Of	On	Off	On
NEC 338 V4 (also all other NEC 3g)	Blinking	Blinking	On	On
Sony Ericsson CID36/37	Off	On	Off	On