

Table of Contents

Chapter1. Introduction.....	1
1.1 Before Installation.....	1
1.2 System Requirements.....	1
Chapter2. IVS-110 – 1-Channel Internet Video Server	2
2.1 Package Content.....	2
2.2 Physical Installation.....	2
Chapter3. ICA-310 – 30M Infrared Internet Camera	5
3.1 Package Content.....	5
3.2 Physical Installation.....	5
Chapter4. ICA-312 – 25M Infrared Internet Camera	6
4.1 Package Content.....	6
4.2 Physical Installation for ICA-312	6
Chapter5. ICA-350 – 30M Infrared Internet Camera	7
5.1 Package Content.....	7
5.2 Physical Installation.....	7
Chapter6. Initial Utility Installation and operation	8
6.1 IPwizard Installation	8
6.2 Wizard function.....	11
6.3 Username and Password.....	12

Chapter1. Introduction

Thank you for purchasing the IP surveillance product. It is versatile and high image solution of the perfect indoor / outdoor surveillance application. The IP surveillance state-of-art design is considerable to fit in various network environments.

1.1 Before Installation

Before installation, please be sure to read this quick installation guide and user's manual (CD) carefully to complete machine installation.

This QIG includes the following chapter:

- Chapter2. IVS-110 – 1-Channel Internet Video Server
- Chapter3. ICA-310 – 30M Infrared Internet Camera
- Chapter4. ICA-312 – 25M Infrared Internet Camera
- Chapter5. ICA-350 – 30M Infrared Internet Camera
- Chapter6. Initial Utility Installation and operation

1.2 System Requirements

Network Interface	10/100MBase-TX Ethernet
Monitoring System	Recommended for Internet Explorer 6.0 or later
System Hardware	<ul style="list-style-type: none">· CPU: Pentium 4, 1.5GHz or above· Memory Size : 512 MB (512 MB or above Recommended)· VGA card resolution : 1024 x 768 or above· Network bandwidth: In VGA resolution mode, minimum up-load bandwidth is 1Mbps.
System Requirement	For Viewer & Recorder Application
Support OS	Win 2000 / XP
System Hardware	<ul style="list-style-type: none">16 cameras surveillance application· CPU: Pentium 4, 2.8GHz or faster· Memory Size : 512 MB or above· VGA card resolution : 1024 x 768 or above· Free space of hard disk: 10GB or higher· Power Supply: 300W or higher

Chapter2. IVS-110 – 1-Channel Internet Video Server

2.1 Package Content

IVS-110 x 1

Power Adapter x 1

Power Cable x 1

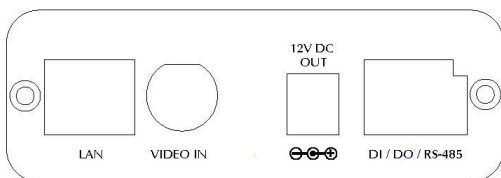
CD Disk x 1

Quick Installation Guide x 1

Software CD x 1

2.2 Physical Installation

Front Panel



LAN Socket

The LAN socket is a RJ-45 connector for connections to 10Base-T Ethernet or 100Base-TX Fast Ethernet cabling. This Ethernet port built N-Way protocol can detect or negotiate the transmission speed of the network automatically. Please use Category 5 “straight through” cable to connect the IVS-110 to a 100Mbps Fast Ethernet network switch or hub. The LAN socket is compliant with IEEE802.3af standard PoE interface. **NOTE:** If you need to connect the IVS-110 to PC or notebook directly, you should use cross over cable instead.

Video-in Jack

You can install an analog camera and connect it to video-in jack.

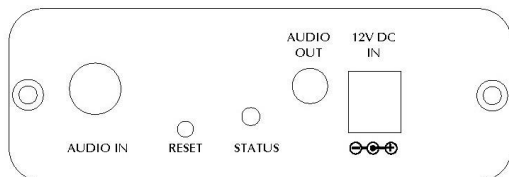
12V DC-Out Jack

The output power is 12V DC. This is used to supply 12V DC power to one external camera. The output power is 12V DC, 400mA maximum. The output power still supplies 12 V DC, 400mA power to one external, when the IVS-110 obtains power from PoE switch.

DI/DO/RS-485 Connector

This IVS-110 provides a general I/O terminal block with one digital input and one output for device control. It has 6 Pins that from left to right that are 12V DC power supply (50mA maximum), Alarm Input, GND, Alarm Output, D+ terminal of RS-485 and D- terminal of RS-485.

Back Panel



Audio-in Jack

Audio-in (line level) jack allows any device that could input audio.

Reset Button

This button is hidden in the pinhole. Please refer to the Appendix A in manual for more information.

Status LED

The Status LED will turn green while system is booting up successfully. This LED is also used to indicate the status of network connection. The LED will flash green while some on access the IVS-110.

Audio-Out Jack

Audio-out Jack allows this device to output audio or alerting sound.

12V DC-in Jack

The input power is 12V DC.

NOTE: Only use the power adapter supplied with IVS-110. Otherwise, the product may be damaged.

1. Attach video source to IVS-110

To use IVS-110, user must supply video source to IVS-110. Connect the BNC terminal of camera to the IVS-110's video input and make sure to power on camera first.

2. Attach Audio source to IVS-110 (option)

If user needs not only video stream but also audio stream, then the audio source should be attached to IVS-110. Connect the RCA terminal of audio device's line output to the IVS-110's RCA input and make sure to power on your camera or audio device first.

3. Plug an Ethernet cable into IVS-110

Connect an Ethernet cable to the LAN socket located on the IVS-110's panel and attach it to the network. If there has a PoE switch in your network, you can connect the IVS-110 LAN cable to this PoE switch to obtain power. The power adapter is unnecessary when IVS-110 is connected to a PoE switch.

4. Connect RS-485 (option)

When users would like to apply a camera with P/T/Z function, they usually need to connect their communication port (for camera control) through RS-485. After RS-485 was correctly connected to D+ and D-, the remote users could control the camera movement through internet.

5. Connect the external power supply to IVS-110

Plug in power adapter and connect to power source. If there has a PoE switch in your network, you can connect the IVS-110 LAN cable to this PoE switch to obtain power. The power adapter is unnecessary when IVS-110 is connected to a PoE switch. After power on, IVS-110 will start to operate. Once you have installed the IVS-110 well, the status LED will turn green. It means the system is booting up successfully. Furthermore, if you have a proper network connection, and access to the IVS-110, the LED will flash green.

6. Connect the power supply to one external camera (option)

The IVS-110 can provide 12V DC out to supply one external camera. The output current is 400mA maximum.

Chapter3. ICA-310 – 30M Infrared Internet Camera

3.1 Package Content

ICA-310 x 1

Power Adapter x 1

Wall Mount Accessories x 1

CD Disk x 1

Quick Installation Guide x 1

Software CD x 1

3.2 Physical Installation

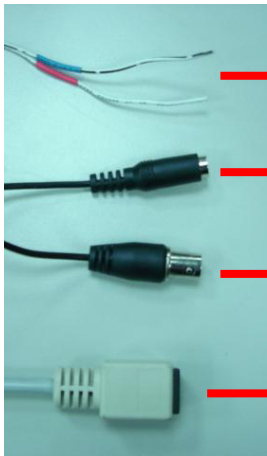
1. Connect an Ethernet cable

Connect the LAN cable on the ICA-310 to the network device (hub or switch).

2. Connect the power source

Please connect the provided power adapter to ICA-310 power connector and connect the power plug to power outlet. If there is a PoE switch in your network, you can connect the ICA-310 LAN cable to this PoE switch to obtain power. The power adapter is unnecessary when ICA-310 is connected to a PoE switch.

3. Identification of ICA-310 cables



- RS485 cables (Blue: D+ / Red: D-) - To connect to P/T scanner.
- Power Connector – Connect to DC 12V power adapter.
- BNC connector – For analog video output.
- RJ-45 Connector – For connect a CAT5 cable to hub or switch.

Chapter4. ICA-312 – 25M Infrared Internet Camera

4.1 Package Content

ICA-312 x 1

Power Adapter x 1

Wall Mount Accessories x 1

CD Disk x 1

Quick Installation Guide x 1

Software CD x 1

4.2 Physical Installation for ICA-312

1. Connect an Ethernet cable

Connect the LAN cable on the ICA-312 to the network device (hub or switch).

2. Connect the power source

Please connect the provided power adapter to ICA-312 power connector and connect the power plug to power outlet.

3. Identification of ICA-312 cables



Chapter5. ICA-350 – 30M Infrared Internet Camera

5.1 Package Content

ICA-350 x 1

Power Adapter x 2 (one for ICA-350, another for heater)

Wall Mount Accessories x 1

CD Disk x 1

Quick Installation Guide x 1

Software CD x 1

5.2 Physical Installation

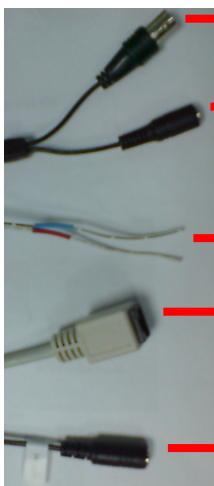
1. Connect an Ethernet cable

Connect the LAN cable on the ICA-350 to the network device (hub or switch).

2. Connect the power source

Please connect the provided power adapter to ICA-350 power connector and connect the power plug to power outlet. It supply two adapters that one for heater and the other for camera.

3. Identification of ICA-350 cables



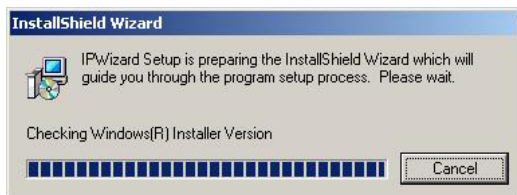
- BNC Connector – For analog video output
- Power Connector – Connect to DC 12V power adapter (for ICA-350)
- RS485 cables (Blue: D+ / Red: D-) - To connect to P/T scanner.
- RJ-45 Connector – For connect a CAT5 cable to hub or switch.
- Power Connector – Connect to DC 12V power adapter (for heater)

Chapter 6. Initial Utility Installation and operation

6.1 IPWizard Installation

1. Insert the bundled CD into the CD-ROM drive to launch the autorun program. Once completed, a welcome menu screen will appear.
2. Click the "IPWizard Utility" hyperlink; you will see the InstallShield Wizard dialog box as below.

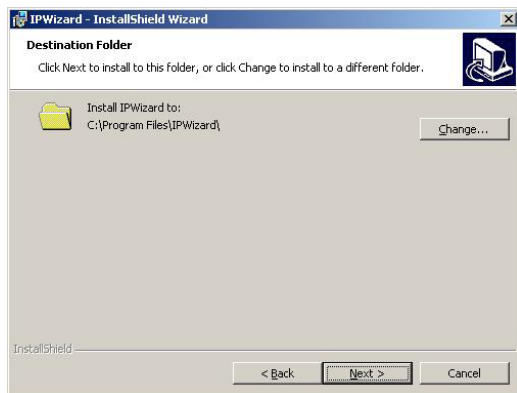
NOTE: If the welcome screen does not appear, click "Start" at the taskbar. Then, select "Run" and type "D:\Utility\setup.exe", assume D is your CD-ROM drive.



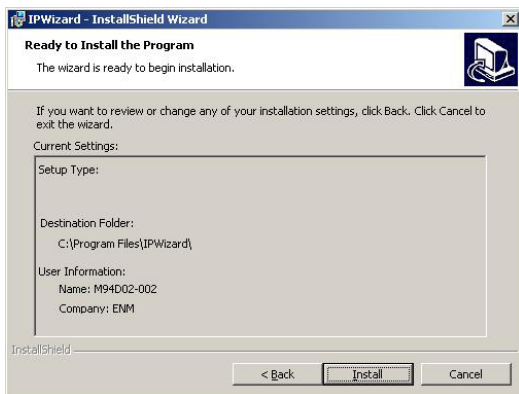
3. The "Welcome to the InstallShield Wizard for IPWizard" will display on the screen and click "Next" to continue.



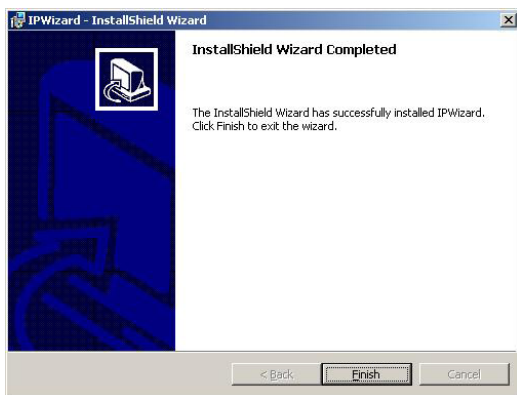
4. Please click "Next" to install with original settings, or you may click "Change..." button to modify the install folder then press "Next" to continue.



5. Please click "Install" to start the installation.



6. Please click "Finish" to complete the installation

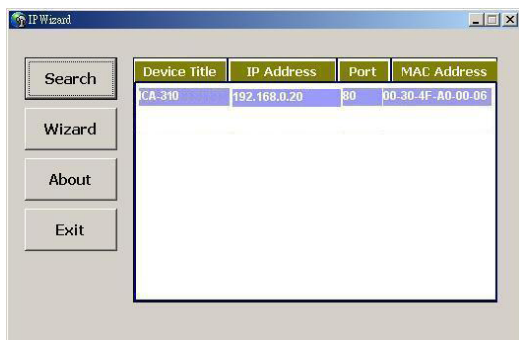


7. Please double-click the utility icon on the desktop then you will see the utility.
8. Press "Search" button. IP Wizard will list all IP Cameras in your LAN environment:



6.2 Wizard function:

Note: Please select your ICA-310 and press "Wizard". The utility featured of "Wizard" function to help user to initial ICA-310. User can setup IP address, username and password step by step.

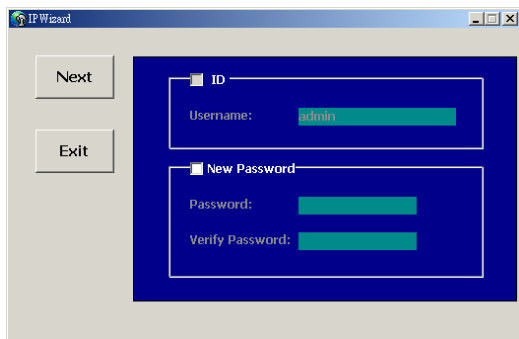


Please enter User Name and Password. Default Username is: **admin**, leave password blank. Then click "Submit".



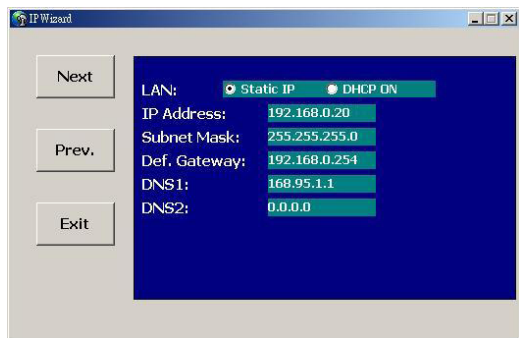
6.3 Username and Password:

You may change the ID and assign a new password to your ICA-310 or keep the original and press "Next" to continue.



The IP Wizard window shows the 'ID' section with a 'Username' field containing 'admin'. Below it is the 'New Password' section with 'Password' and 'Verify Password' fields. On the left, there are 'Next' and 'Exit' buttons.

You can select "Static IP" and enter the IP settings. Or select "DHCP ON" when there is a DHCP server in your network.



The IP Wizard window shows the 'LAN' section with radio buttons for 'Static IP' (selected) and 'DHCP ON'. Below are fields for 'IP Address' (192.168.0.20), 'Subnet Mask' (255.255.255.0), 'Def. Gateway' (192.168.0.254), 'DNS1' (168.95.1.1), and 'DNS2' (0.0.0.0). On the left, there are 'Next', 'Prev.', and 'Exit' buttons.

If no IP address is assigned after 30 seconds, ICA-310 will use its default address 192.168.0.20. User may open your web browser, and key in <http://192.168.0.20> in the address field to login web configuration page and refer to our User's manual in the bundled CD disk to configure.

Further Configuration

If you want to configure more detail settings of ICA-310, ICA-312, ICA-350 and IVS-110, please refer to the user manual in the CD disk.

This page is intentionally left blank

This page is intentionally left blank