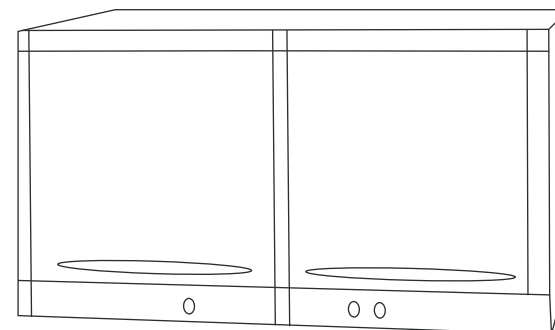




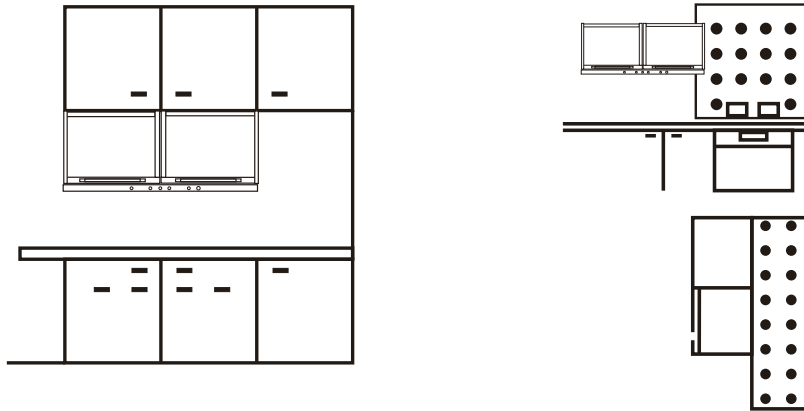
DISINFECTION CABINET  
USER MANUAL  
MODEL: MDC-21C



Please read this manual carefully before using the product and keep it properly.

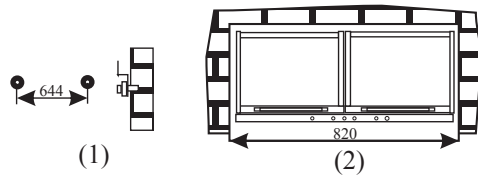
● Location:

It's convenient for using if install the disinfection cabinet above the sink.  
The location of installation must away from the gas hobs and electrical appliance.  
The place where you put or hang the disinfection cabinet should be flat and strong enough, otherwise it will deflect or fall.

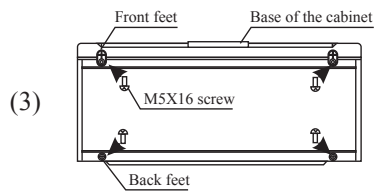


● Use the M8×60 bolt to fix the “L” part. Then fix with the linking plate. (The picture 1).

● The install position should keep enough space for opening the door. The space landscape orientation should be more than 820mm (The picture 2).



● If the disinfection cabinet put on the table, it is needed to install the supported feet of the cabinet. As the picture 3: use the M5×16 screw to fix the front feet and the back feet of the cabinet.



### Daily Maintenance

It is suggested to clean the product often. Remember to disconnect the power supply before cleaning.  
Then use a wet towel with some neutral detergent to wipe off the stain inside or outside of the cabinet, and then, use a dry towel to wipe off the remaining detergent.  
The common fault and how to handle

Thanks for using Malloca disinfection cabinet.  
Malloca disinfection cabinet keeps clean and dries the tableware and appliance disinfected with ozone, UV in the right cabinet and sterilize by far infrared in the left cabinet. The product can kill colon bacillus, staphylococcus and bacteria causing hepatitis. It is an ideal disinfection cabinet for the restaurant, kindergarten, hotel, dining hall and other places.

### Warning

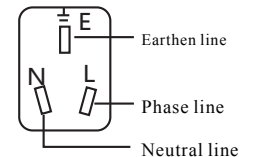
- Only when the right door is closed can the disinfection cabinet work normally, otherwise there will be leak of ozone.
- Do not put any other thing than tableware into the disinfection cabinet.
- In order to achieve the best disinfection result and avoid burning your hands or leak of ozone, you are suggested to wait for another 20mins before opening the door after the sterilizing is finished and do not take out the tableware before they cool down.
- Cannot put the plastic and wooden product into the left cabinet.
- High temperature, please be careful not to get burnt.

### Special Attention

- For the tableware of which heat-resistance is below 75℃ should not be placed in the cabinet.
- For the tableware of which heat-resistance is below 180℃, such as high temperature resistance plastic materials, silicon rubber product or low temperature resistant glass products should not be put into the left cabinet.
- The tableware of which heat-resistance is between 180℃ to 250℃ should be put away about 100mm from the heat pipe.

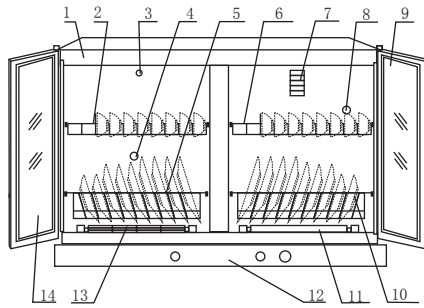
### Precautions

- The power supply socket must be reliably ground. The user should not change the socket by himself.(Please refer to picture 1).
- The tableware should be dry before putting into the cabinet and shouldn't be overlapped to obtain the best sterilizing effect.
- Don't touch the glass of the door when it is sterilizing for avoiding being scalded.
- Don't block the Air-off hole.
- When the maintenance work is required, the power supply should be turned off first.
- Don't put the disinfection cabinet near the tinder and the cloths things are not allowed to put into, on or beside the cabinet.
- Please turn off the power supply after sterilizing or finish cleaning.
- As to the special people (like children) are not suitable to use this disinfection cabinet.



- How to handle the junk product: for the junk appliances which exceed the safety life or not available with the repair value, the user should take the appliance to the recycle enterprise, household appliance agent or after-sales service center. The user is not allow to throw away the junk appliance by themselves

### Names of Components



- |                            |                            |
|----------------------------|----------------------------|
| 1. Body of cabinet         | 8. Temperature control (2) |
| 2. Bowl rack               | 9. The right door          |
| 3. Air-hole                | 10. Dish rack              |
| 4. Temperature control (1) | 11. Heat pipe (1)          |
| 5. Dish rack               | 12. Power box              |
| 6. Bowl rack               | 13. Heat pipe (2)          |
| 7. Ozone producer          | 14. The left door          |

### Major Technical Data

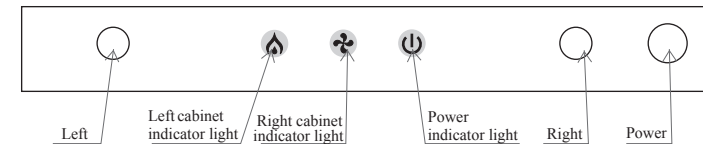
<b>Model</b>	<b>MDC-21C</b>	
Power supply	220V ~ 50Hz	
Rated input power	500W(Left cabinet 400W,right cabinet 100W)	
Interior volume	60L(30L for the left, 30L for the right)	
The left cabinet	Sterilizing temperature	125°C <sup>+45</sup> °C <sub>-5</sub>
	Working time	≥15mins
The right cabinet	Ozone concentration	5mg/m <sup>3</sup> ≤ ozone concentration ≤ 30mg/m <sup>3</sup>
	Work cycle (load)	≥30mins
	Life span for the ozone generator	≥1000h
	Power of ozone UV lamp	6W
Life span for the heat pipe	≥3000h	
Work cycle (load)	≥20mins	
Rated loading weight of each rack	5kg	
Net weight	14kg	
Exterior dimension	795 * 373 * 395mm	

### Features

- With fashionable outlook design and attractive shape.
- The product can control separately by left and right cabinet.
- With temperature increase to above 120°C, the infrared ray produced in the left cabinet can kill 99.9 percent of the colon bacillus, staphylococcus and showing negative effect in the (HBsAg) damaging experiment, but does no side-effect on human health.
- Ozone in the right cabinet disinfects the colon bacillus and the staphylococcus to some extent, and it is fit for keeping clean the tableware of which is not high temperature resistant.
- The left and right cabinet can control exactly, it's safe and reliable.

### How to use

- Clean and dry the tableware, put the tableware which need to disinfect drastically into the left cabinet and the low heat-resistance ones should be put into the right cabinet.



- Plug the power cord and get ready for work. Press the power button, it means ready to work while the power indicator light turns on. Press the left button, the left cabinet indicator lamp will be on and the left cabinet start to work. Press the right button, the right cabinet indicator lamp will be on and the right cabinet start to work. If you only need one of the two sides to work, you can just press the left button or right button. When the temperature is higher than that set by the temperature control, the indicator lamp will be automatically off.
- Sterilizing is still in process within 20mins after the indicator lamp is off. Don't open the door within this period to guarantee the sterilizing effect.
- If you need to cancel any function, please press the “power” button.
- If you open the right door when the right cabinet is working. The producer and the heating pipe will stop working. Only close the right door and press the right button again can the right cabinet continue to work.
- If you need to turn off the power indicator light, then just press the power button.

### How to install

- Pls read this installation carefully before you install, and test it to make sure it's ok when the first time you use this disinfection cabinet.
- Warning
  - A. Should install on a wall which can bear weight.
  - B. Any installations should be undertaken by professional electrician, any wrong measures are dangerous.
  - C. Should not put this disinfection cabinet close to heat source, otherwise will occur damage or danger.

## The common fault and how to handle

Situation	Cause analysis	Treatment methods
Fail to work	The socket out of touch	Repair or replace
	Fuse break down	Repair the fuse
	Power supply line break down	Replace the power supply line
Ozone producer fail to work	Door control switch break down	Replace the the door control switch
	Electronic ballast break down	Replace the electronic ballast
	Ozone producer break down	Replace the Ozone producer
Heat pipe fail to work	Relays break down	Replace the relays
	Temperature control break down	Replace the temperature control
	Heat pipe break down	Replace the heat pipe