

Lifvation is proud to bring you
Radiancy's

Spa Touch elite

莱威盛呈现给您的肌肤改善仪



24 Jun 2011 edition.

Lifvation, <http://www.lifvation.com>

9/17/2012

	Chapter	Page
1.0	lifvation 关于莱威盛公司	3
2.0	Overview	5
3.0	Benefits 好处	10
4.0	The SpaTouch Elite (STE)	23
5.0	Hair basic	29
6.0	Hair removal theory	36
7.0	SPA TOUCH ELITE (STE)	50
8.0	Treatment procedure	59
9.0	General guidelines	83
10.0	Equipment Maintenance	93
11.0	Notes	98
12.0	About radiancy	100



1.0

LIFVATION

关于莱威盛公司

All Our Materials are Online

- If you are using a smartphone (iPhone, Samsung, HTC), please go to this address:
 - mistral.lifvation.com
 - Scroll to the bottom to see the training materials.
- 如果您在使用智能手机，您可以去以下的网站收集培训材料。
 - mistral.lifvation.com
 - 当您在网站，请滚动至底部，您将看到培训材料的链接。

	Singapore	Malaysia	Hotline
Your contact point:	Andrew Phua	Charles Khaw	Dylan Khoolim
Hotline:	+65 9767 9955 +60 16 9716687	+60 13 6216798	+65 9646 5071 +60 16 7368399
Email:	contactus@lifvation.com		
Skype:	contactLifvation		
Online livechat	http://www.lifvation.com/chat		

2.0

OVERVIEW概述 GÀISHÙ

Evolution of skin treatment technology

皮肤治疗机的历史, Pífū zhìliáo jī de lìshǐ

1950	1980	1995	2000
RF	Lasers	IPL (Intense Pulse Light)	LHE – Light & Heat Energy
<ul style="list-style-type: none"> • 30-50 J/ cm² 	<ul style="list-style-type: none"> • High treatment energy – 50-200 J/cm² 	<ul style="list-style-type: none"> • High energy – 20-50 J/cm² 	<ul style="list-style-type: none"> • Low fluencies: 4-15 J/cm²
<ul style="list-style-type: none"> • high frequency alternating current, 6 MHz 	<ul style="list-style-type: none"> • Single wavelength – 	<ul style="list-style-type: none"> • Variable wavelength • A few applications on the same device • Larger spot size 	<ul style="list-style-type: none"> • Takes the concept of IPL one step further by adding direct heat to the equation. • Combination of Light and Heat leads to an effective photo thermal process • Variable wavelength: 350nm-1200nm, for specific clinical applications
<ul style="list-style-type: none"> • radiofrequency treatment is associated with a relatively high rate of potential side effects. • the use of such systems demands comprehensive physician qualification and training. 	<ul style="list-style-type: none"> • different devices for different applications • requires smaller spot sizes to achieve effective fluence • Require skin cooling • Big, difficult to operate • Expensive, high maintenance cost • Side effects 	<ul style="list-style-type: none"> • Still require cooling systems • Need high expertise to operate (some devices) • Side effects 	<ul style="list-style-type: none"> • No skin cooling • Big spot size: from 11x11mm to 55x22mm • High safety • Simple operation – intensity adjustment only • Portable, tabletop systems

Comparison of Technologies

	Lasers – 1st Generation 1980	IPL (Intense Pulse Light) - 2nd Generation 1995	LHE® – Light & Heat Energy - 3rd Generation 2000
Wavelength	Single wavelength – different devices for different applications	Variable wavelengths A few applications on the same device	Variable wavelength 350 - 1200 nm, determined by specific clinical applications
Spot Sizes	small spot sizes fluence up to 2 cm ²	Larger spot sizes fluence up to 8 cm ²	Big spot sizes Standard: 12 cm ² Extra Large: 18 cm ²
Treatment Energy	50-200 J/cm ²	20-50 J/cm ²	4-15 J/cm ²
Cooling	Requires - • skin cooling • lamp cooling	Requires - • skin cooling • lamp cooling	No need for - • skin cooling • lamp cooling
Ease of use	Big, difficult to operate, High level of experience	Need for high expertise to operate (some devices)	Simple operation – intensity adjustment only
Side Effects	Many side effects	Some side effects	Reduced side effects (LHE® can be used for all skin types)

Light Heat Energy (LHE) family

LHE系列技术 Xìliè jìshù

LHE









xLHE

sLHE

mLHE

Radiancy's range of products

Radiancy(以色列公式)的产品

Medical	Aesthetic	MicroPhototeraphy
XLHE	sLHE	mLHE
 <div> <p>Mistral</p> <ul style="list-style-type: none"> Psoriasis Care Acne Clearance Skin Tightening Skin Rejuvenation </div>  <div> <p>Duet Pro</p> <ul style="list-style-type: none"> Collagen Renewal Hair Removal Vascular Lesions Pigmented Lesions </div>	 <div> <p>Kona</p> <ul style="list-style-type: none"> Skin Rejuvenation Collagen Renewal </div>  <div> <p>Duet</p> <ul style="list-style-type: none"> Hair Removal Vascular Lesions </div>  <div> <p>SpaTouch Elite</p> <ul style="list-style-type: none"> Pigmented Lesions </div>	 <div> <p>EpiFree</p> <ul style="list-style-type: none"> Hair Removal </div>  <div> <p>FTD</p> <ul style="list-style-type: none"> Skin Rejuvenation Collagen Renewal </div>  <div> <p>CTL</p> <ul style="list-style-type: none"> Acne Clearance </div>



Specialized Light Heat Energy

sLHE特殊功能技术 Tèshū gōngnéng jìshù



Device	Spa Touch Elite (STE)
Target user:	Therapists / Doctors / Aestheticians
Businesses:	Medi-spas & Aesthetic Clinics

3.0

BENEFITS 好处



The Superior Benefits 最佳效益 zuì jiā xiàoyì



Speed 快



Simple 健谈用



SAFE 安全



Effective 有效



- **Operations:**
 - No need Cooling Gel
 - No need Numbing creams
 - No noisy cooling system
- **High quality machine**
 - User friendly interface
 - Robust machine made in Israel
- **操作简便** cāozuòjiǎnbiàn
 - 无需使用冷却凝胶。 wúxūshǐyònglěngquènnín gjiāo
 - 无需冷却系统 wúxūlěngquèxìtǒng
 - STE是以色列来的高品质机 STE shì yǐsèliè lái de gāo pǐnzhí jī



- 18cm² spot size = 6x faster than any light based product 六倍的速度比任何基于光技术 liu bèi de sùdù bǐ rèn hé jī yú guāng jì shù
- 12cm² spot size = 3x faster than any light based product 三倍的速度比任何基于光技术 san bèi de sùdù bǐ rèn hé jī yú guāng jì shù





STE is the fastest hair removal in the market



Baseline 11.3.07



1 month after 3 Tx 04.07.07

Back hair removal in only 10 minutes!!

从一个人只有10分钟的后部发

Cóng yīgè rén zhǐyǒu 10 fēnzhōng de bèibù tóufǎ



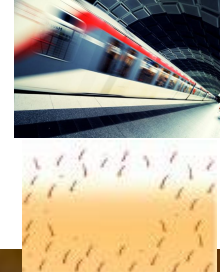
3 sessions

Speed & Effectiveness



3 sessions

Speed & Effectiveness



2 sessions



1 session, 6 weeks later

Speed & Effectiveness



3 sessions



- Built-in safety technologies
 - LHE advances the principles of selective photothermolysis by utilizing the dual energy pathways of light and heat to gain the greatest advantage of the light/heat relationship. Patented internal filters protect the skin and proprietary algorithms take full advantage of the skin's thermal absorption characteristics. These innovations create the exact balance of light and heat necessary to achieve clinical efficacy safely in a variety of clinical applications.
- Low energy
 - Because it uses **low fluences**, LHE's natural fusion of light and heat creates a far more efficient photo thermal technique. The addition of direct heat increases overall effectiveness and lowers fluence to ultra safe levels. Lowering fluence allows us to eliminate the need for skin cooling techniques, simplify the treatment process and minimize risk of harmful side effects, making it safer, easier and more cost effective.
- Sensitive care for all skin type
 - This unique balance of light and heat also enabled **effective treatment for the more difficult hair** (i.e., salt-n-pepper) and skin types. Skin Types V-VI and sensitive, tanned and Asian skin could now comfortably and safely benefit from phototherapy treatments. A specialized LUA (light unit assembly) for these skin types further enhances safety and comfort without compromising results.

Testimonials



- **Amiya Prasad, MF, Cosmetic Surgeon - New York**
 - “I saw that the light delivery and permanence of [LHE] were equivalent to the laser systems I had investigated. In fact, the results were essentially identical. [LHE] did what the rep said it could do – it provided significant long-term hair reduction.”

<http://prasadcosmeticsurgery.com/dr-prasad/ask-dr-prasad/>



- ***Benjamin Van Raalte, M.D., Plastic Surgeon Iowa***
 - “For our market, traditional laser hair removal is prohibitively expensive for most patients. At the same time, there is no system that doesn’t require multiple treatments or is guaranteed to work on all people. [LHE] has been great for us. It really allows us to offer hair reduction treatments at a reasonable price.”

<http://www.iowaplasticsurgery.com/doctor.php>



- **Alan Mantell, M.D., Dermatologist California**
 - “Radiancy is a recognized brand for Dermatologists. It isn’t difficult to incorporate LHE into our practice. Most of my patients already know the Radiancy brand. ”

<http://www.realself.com/find/California/Glendale/Dermatologist/Alan-Mantell>

Other benefits

- 'Desktop' product
 - Compact
 - Portable
- Forward compatible
 - Easily upgraded
 - Plug & play hand piece
- Fast returns



4.0

THE SPATOUCH ELITE (STE)

Front view 前面



Handpiece 钝头



Side view 旁边

Handpiece connection
机头连接
Jī tóu liánjiē



Side view 旁边

Power and air
 电源连接器插针
 和

空气阀
 Diànyuán liánjiē qì chā
 zhēn hé
 kōngqì fá



Connected hand piece
 Jī tóu liánjiē dào jīqì
 机头连接到机器



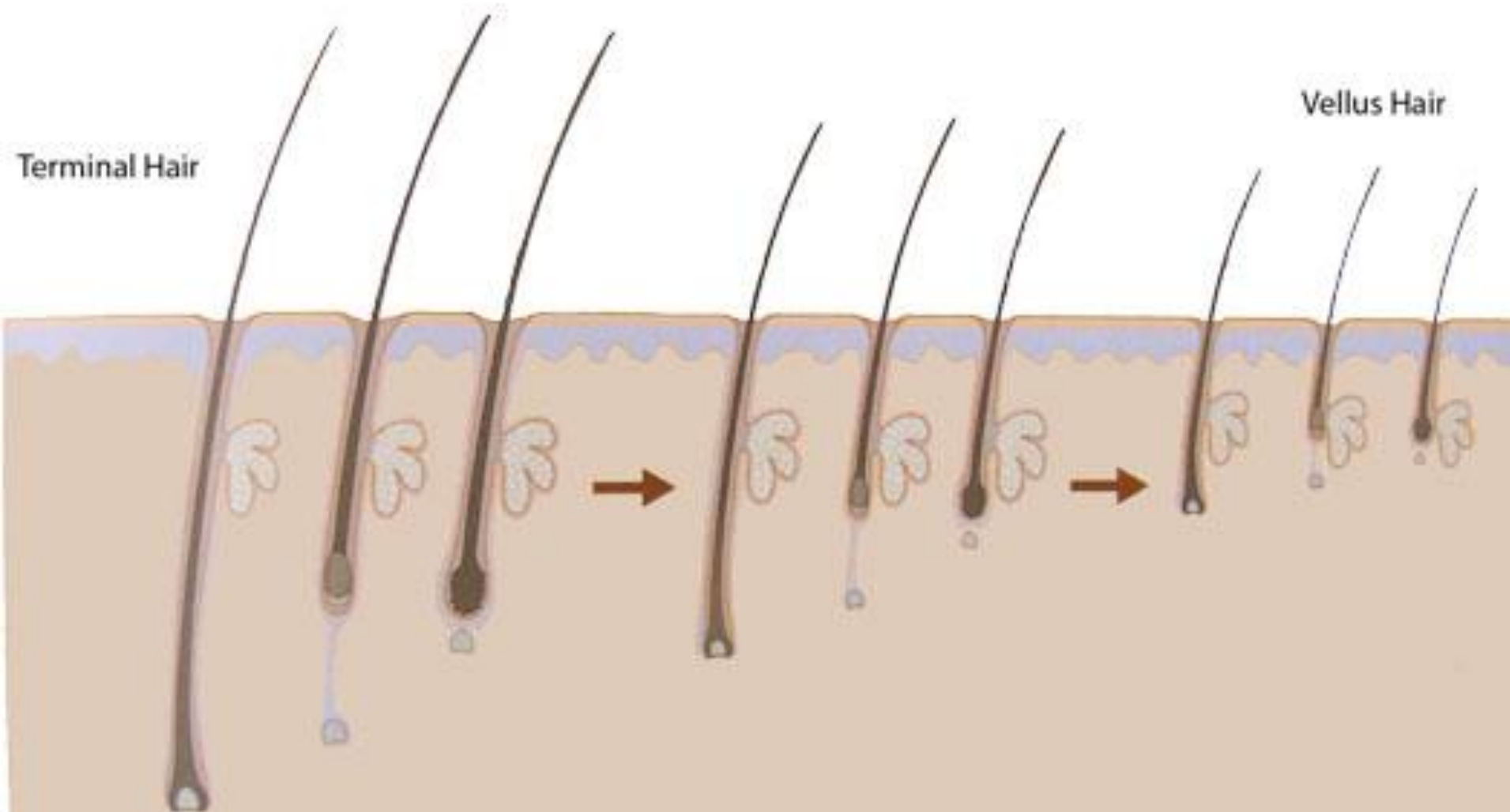
Back view 后面



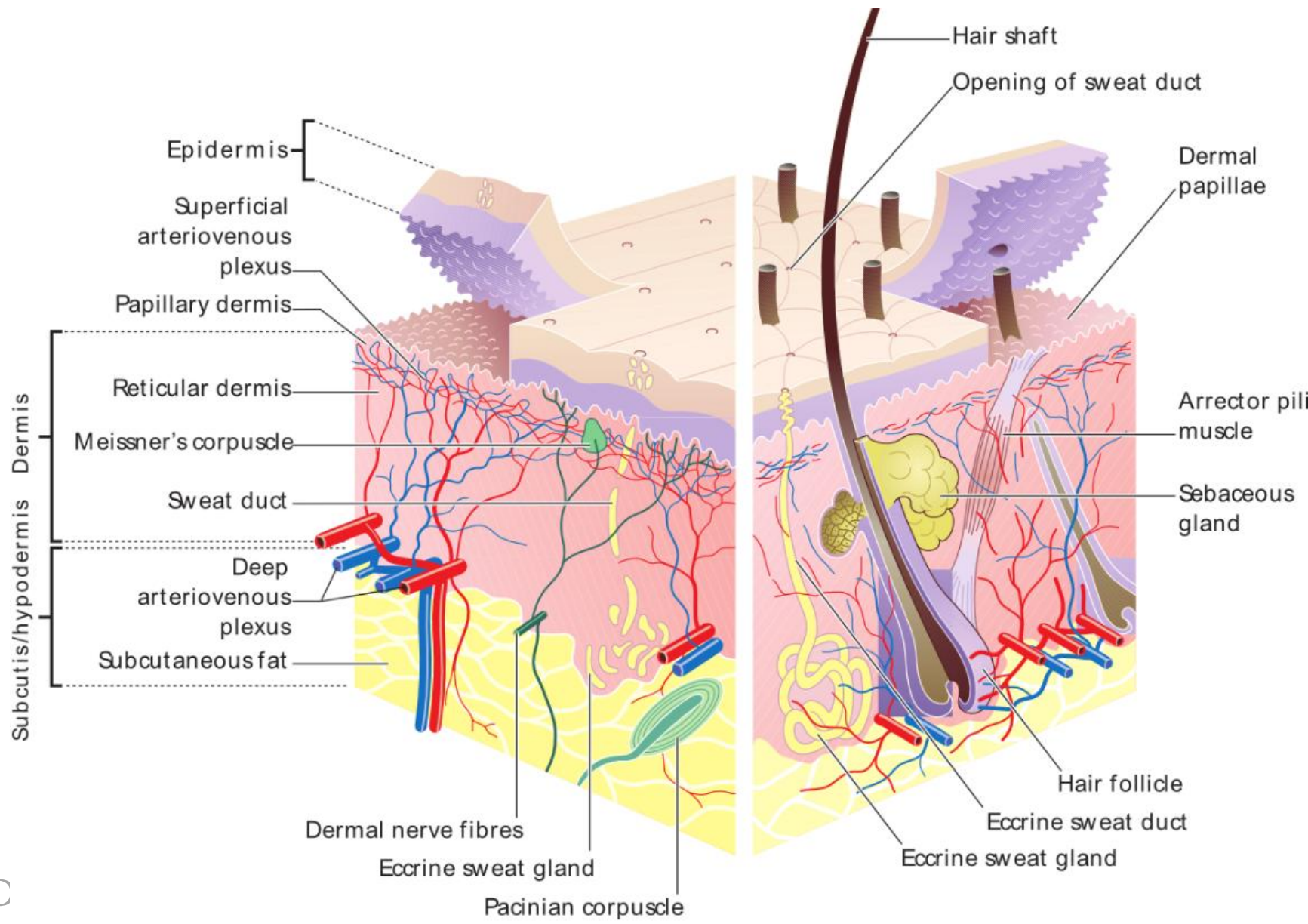
5.0

HAIR BASIC

Types of hair

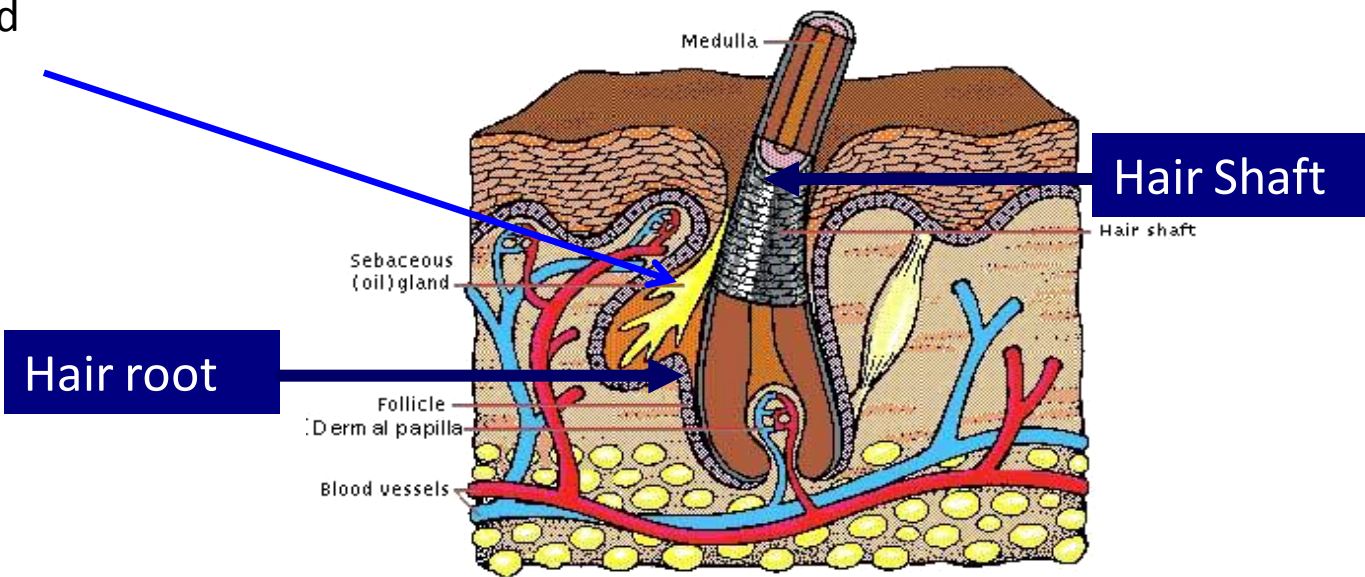


Skin structure



- The hair is consisted of 2 major parts:
 - Hair shaft 毛干 Máo gān, - the visible part of our hair which has no influence on the hair growth.
 - Hair root 毛根 máogēn - the part which is under the skin and influences the hair growth
- The hair shaft does not influence the hair bulb, hence shaving the hair has no impact on its growth

sebaceous gland
皮脂腺
Pízhīxiàn

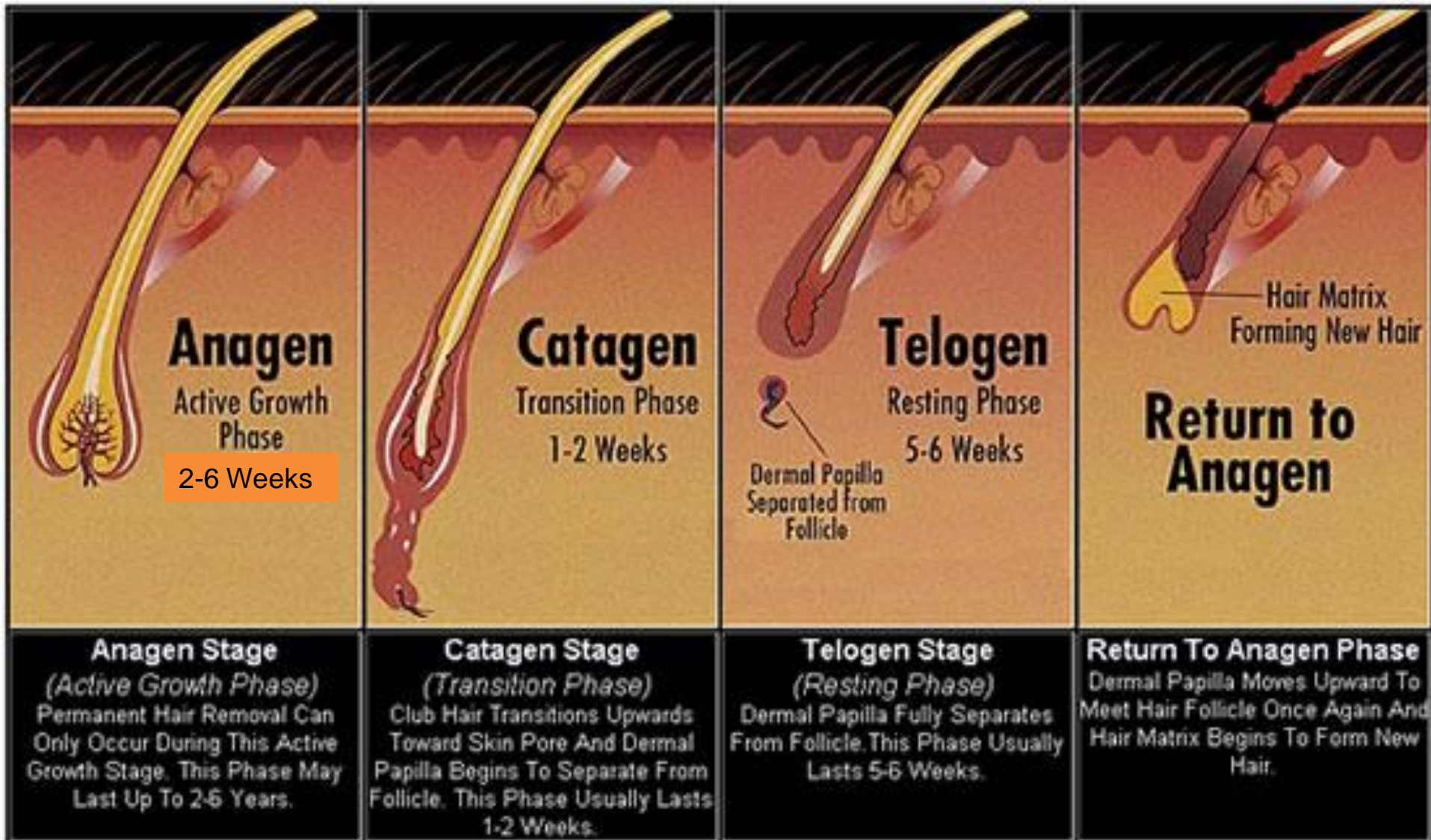


Melanin 黑色素 Hēisèsù

- ❏ The Melanin is the pigments responsible for our skin and hair color.
- ❏ The melanin protect of our skin, hair and eyes from the sun's UV rays
- ❏ Melanin absorbs all light spectrum including visible and infrared light. 黑色素吸收所有光线的光谱，包括可见光和红外光。 Hēisèsù xīshōu suǒyǒu guāngxiàn de guāngpǔ, bāokuò kějiànguāng hé hóngwài guāng.
- ❏ Melanin biosynthesis is expected to occur with 3-8 days after exposure to sun. 新的黑色素是在3-8天。 Xīn de hēisèsù shì zài 3-8 tiān.
- ❏ Individuals with bright skin color produce less melanin than darker skin.



Hair lifecycle头发的生命周期



Long Term Removal and Hair Growth Biology

- Hair growth occurs in a three part cycle: anagen (active), catagen (transition) and telogen (resting).
- During anagen, the hair and follicle are active and there is an increase of melanin. Being that light based hair removal relies heavily on melanin for effectiveness, it is important that each hair and follicle be treated during this active phase to ensure maximum hair removal. As each hair on the body goes through this cycle independently, a course of treatments over a period of time will ensure that each hair and follicle is thermally damaged during its active growth phase.
- 头发生长在3个周期：生长期（活动），退行期（过渡）和休止期（休息）。在生长期阶段，头发和毛囊是积极的。有黑色素增加。光脱毛在很大程度上依赖于黑色素。重要的是，每个头发和毛囊在生长期阶段处理，以确保有效的脱毛。由于每个体毛，通过这个周期去独立，这是为什么头发不能删除1次。需要至少6-8节去除头发。
- Tóufǎ shēngzhǎng zài 3 gè zhōuqí: Shēng cháng qí (huódòng), tuìxíng qí (guòdù) hé xiūzhǐ qí (xiūxi).
Zài shēng cháng qí jiēduàn, tóufǎ hé máonáng shì jījí de yǒu hēisèsù zēngjiā. Guāng tuōmáo zài hěn dà chéngdù shàng yīlài yú hēisèsù. Zhòngyào de shì, měi gè tóufǎ hé máonáng zài shēng cháng qí jiēduàn chǔlǐ, yǐ quèbǎo yǒuxiào de tuōmáo. Yóuyú měi gè tǐ máo, tōngguò zhègè zhōuqí qù dúlì, zhè shì wèishéme tóufǎ bùnéng shānchú 1 cì. Xūyào zhìshǎo 6-8 jié qù chú tóufǎ.

6.0

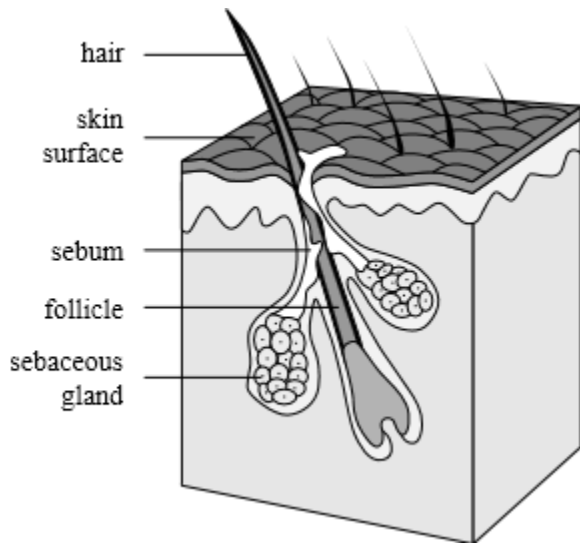
HAIR REMOVAL THEORY 脱毛理论 TUŌMÁO LǚLÙN

Selective Photothermolysis

- SpaTouch Elite is a Light & Heat Energy (LHE®) device for the treatment of Hair Removal (HR). It is based on the principle of selective photothermolysis, utilizing specific wavelength range and pulse duration to selectively coagulate the hair follicles with minimal effect to the surrounding skin tissue.
- SpaTouchElite是一个光热能源机利用光热作用。光热是一种使用特定的光的波长不影响皮肤组织的破坏头发的方法。
- SpaTouchElite shì yīgè guāng rè néngyuán jī lìyòng guāng rè zuòyòng. Guāng rè shì yī zhǒng shǐyòng tèdìng de guāng de bōcháng bù yǐngxiǎng pífū zǔzhī de pòhuài tóufǎ de fāngfǎ.

Selective Photothermolysis

- Light alone cannot destroy the hair bulb and bulge; it is the heat that does it. 光不能破坏头发。热是负责销毁的头发。Guāng bùnéng pòhuài tóufǎ. Rè shì fùzé xiāohuǐ de tóufǎ.
 - Heat raises the temperature of the follicle to the point of coagulation. Thermal damage to the bulb and bulge occurs at approximately 74°C. 头发可以被毁灭，在温度高于74摄氏度。Tóufǎ kěyǐ bèi huǐmiè, zài wēndù gāo yú 74 shèshìdù. The photothermal destruction of these two elements serves to prevent or significantly delay future hair growth.
- Hence, it is important to provide enough heat to destroy the hair follicle without damage to surrounding skin.
- Selective photothermolysis achieves that by optimizing the light-source spot size, wavelength and the pulse duration.



Selective Photothermolysis

All Light Based Devices are based on:

“Selective Photothermolysis”

"The matching of a specific wavelength and pulse duration to obtain optimal effect on a targeted tissue with minimal effect to surrounding tissues"

Anderson & Parrish, Science/1983

Difference between Laser, IPL and LHE

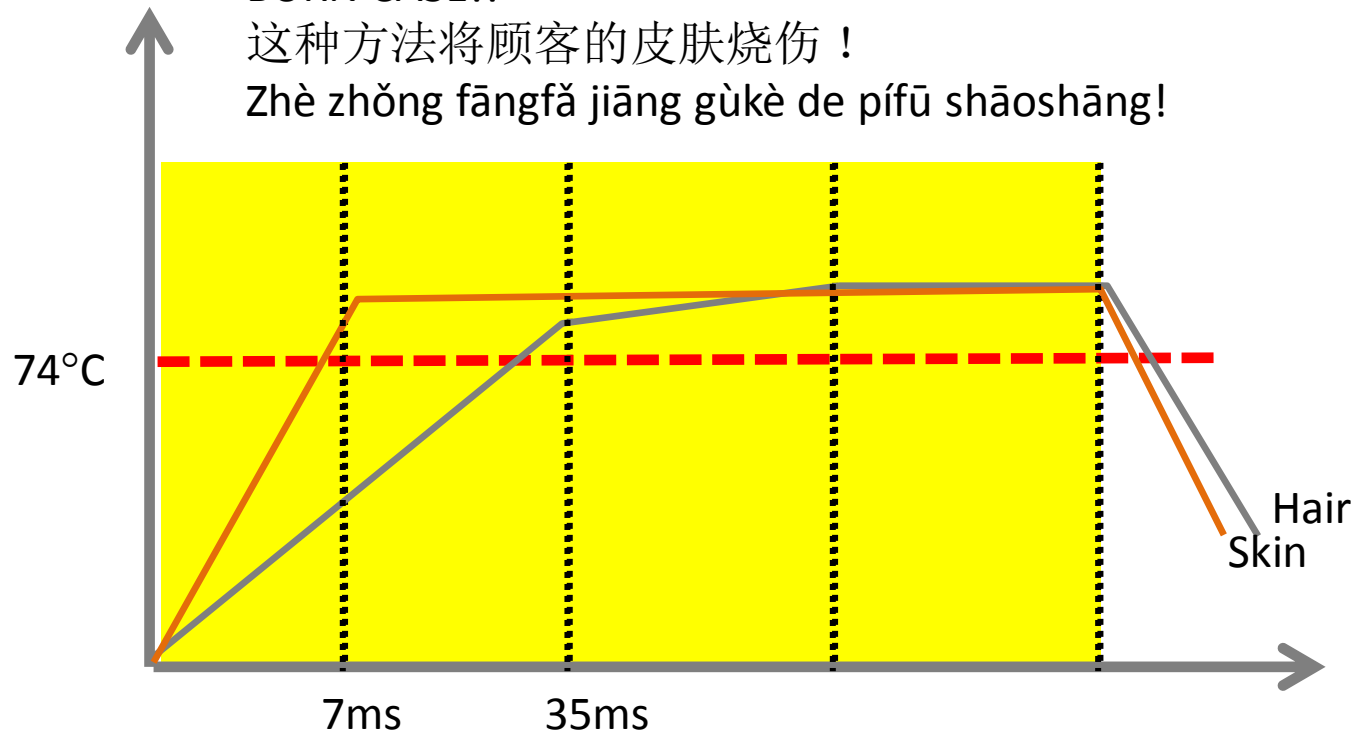
- Normally, it requires a very intense light source applied to the skin to heat the follicle to at least 74°C.
- Laser & IPL uses power of 30-200 Joules per cm² skin
- LHE uses only 3-15 Joules per cm² skin by combining the light with a directed heat process to reach 74°C.
- 非常强烈的光线需要加热到至少74摄氏度的卵泡。
这是一个原因，激光及彩光使用这么大的权力，30-200焦耳。LHE光线只使用3-15焦耳，因为它使用了两种类型的能量来加热的头发。
- Fēicháng qiángliè de guāngxiàn xūyào jiārè dào zhìshǎo 74 shèshìdù de luǎnpào.
Zhè shì yīgè yuányīn, jīguāng jí cǎi guāng shǐyòng zhème dà de quánlì, 30-200 jiāo'ěr.
LHE guāngxiàn zhǐ shǐyòng 3-15 jiāo'ěr, yīnwèi tā shǐyòngle liǎng zhǒng lèixíng de néngliàng lái jiārè de tóufǎ.

Light alone

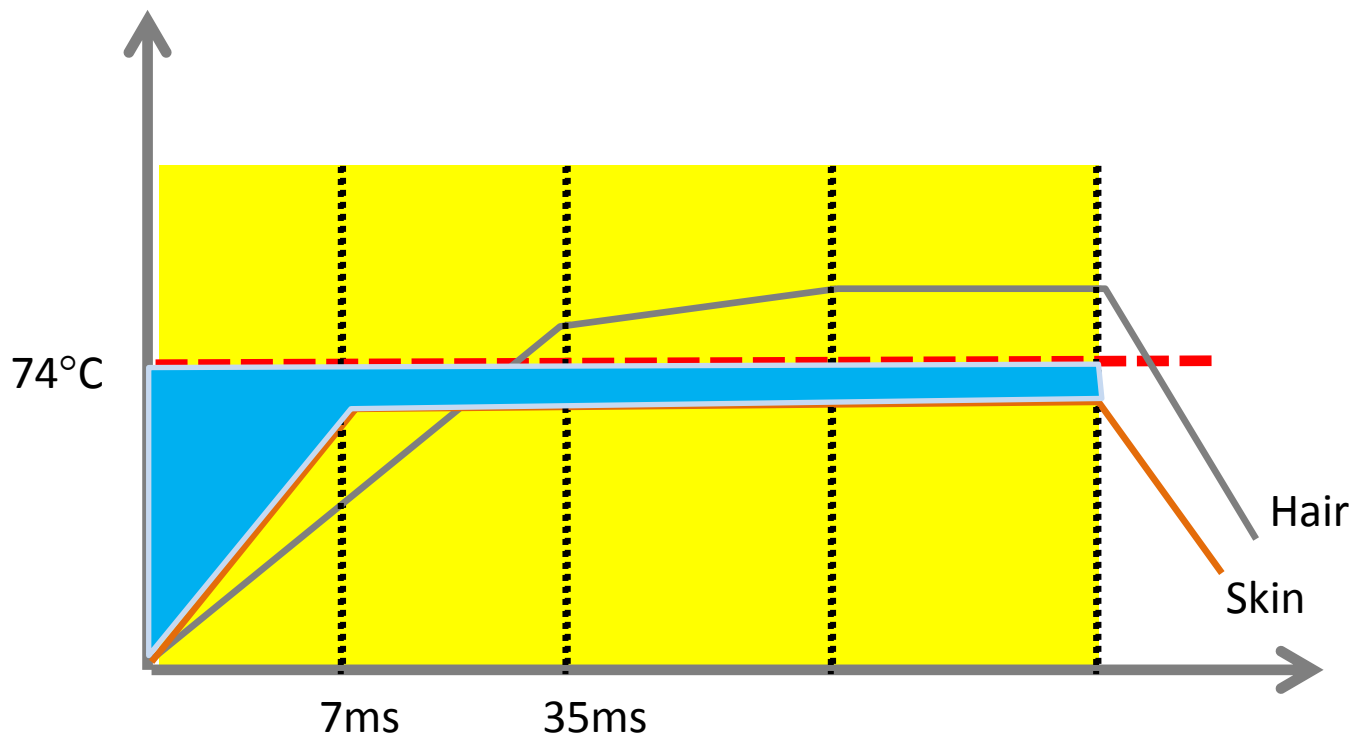
BURN CASE!!

这种方法将顾客的皮肤烧伤！

Zhè zhǒng fāngfǎ jiāng gùkè de pífū shāoshāng!



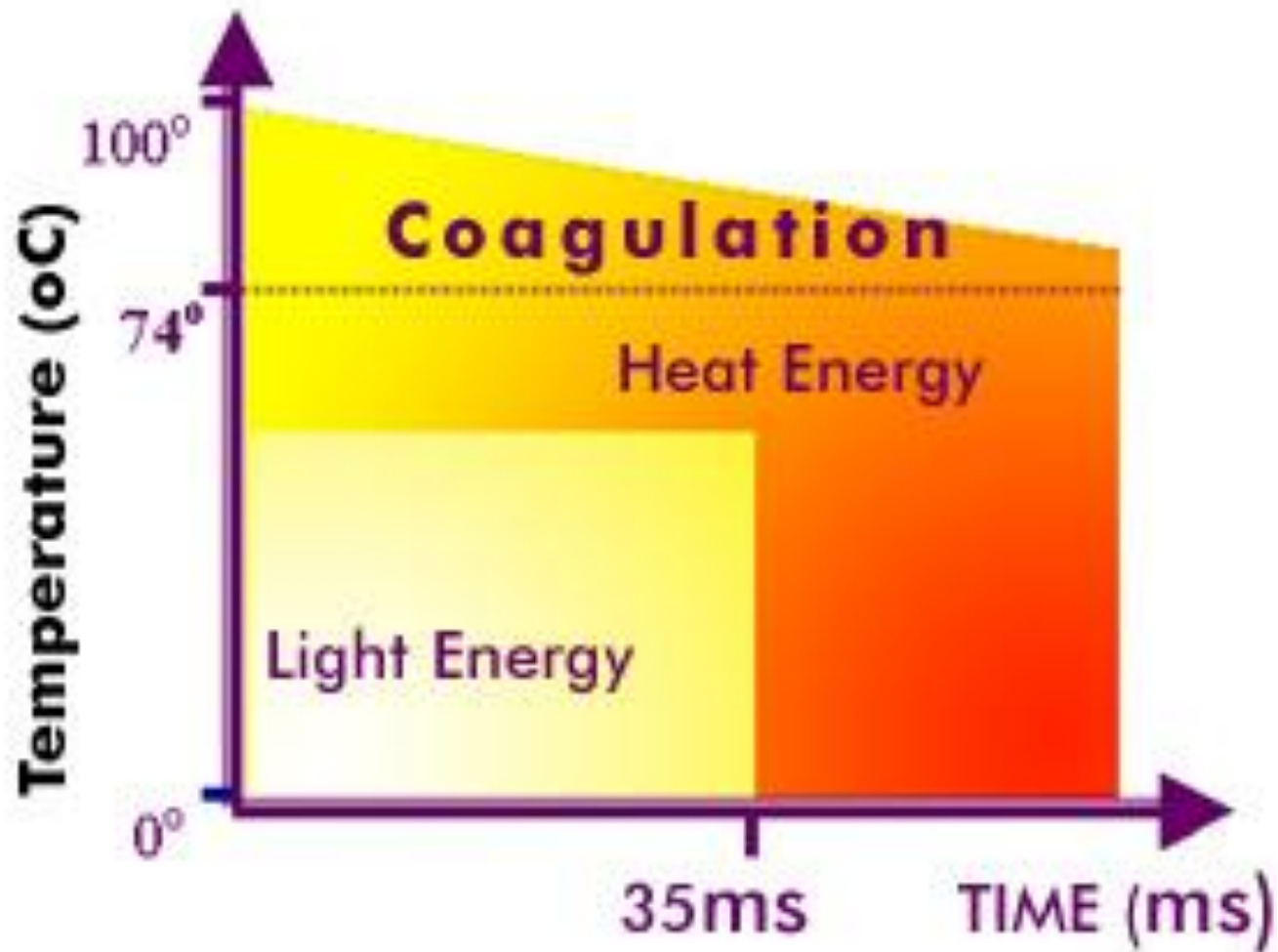
Light & Gel



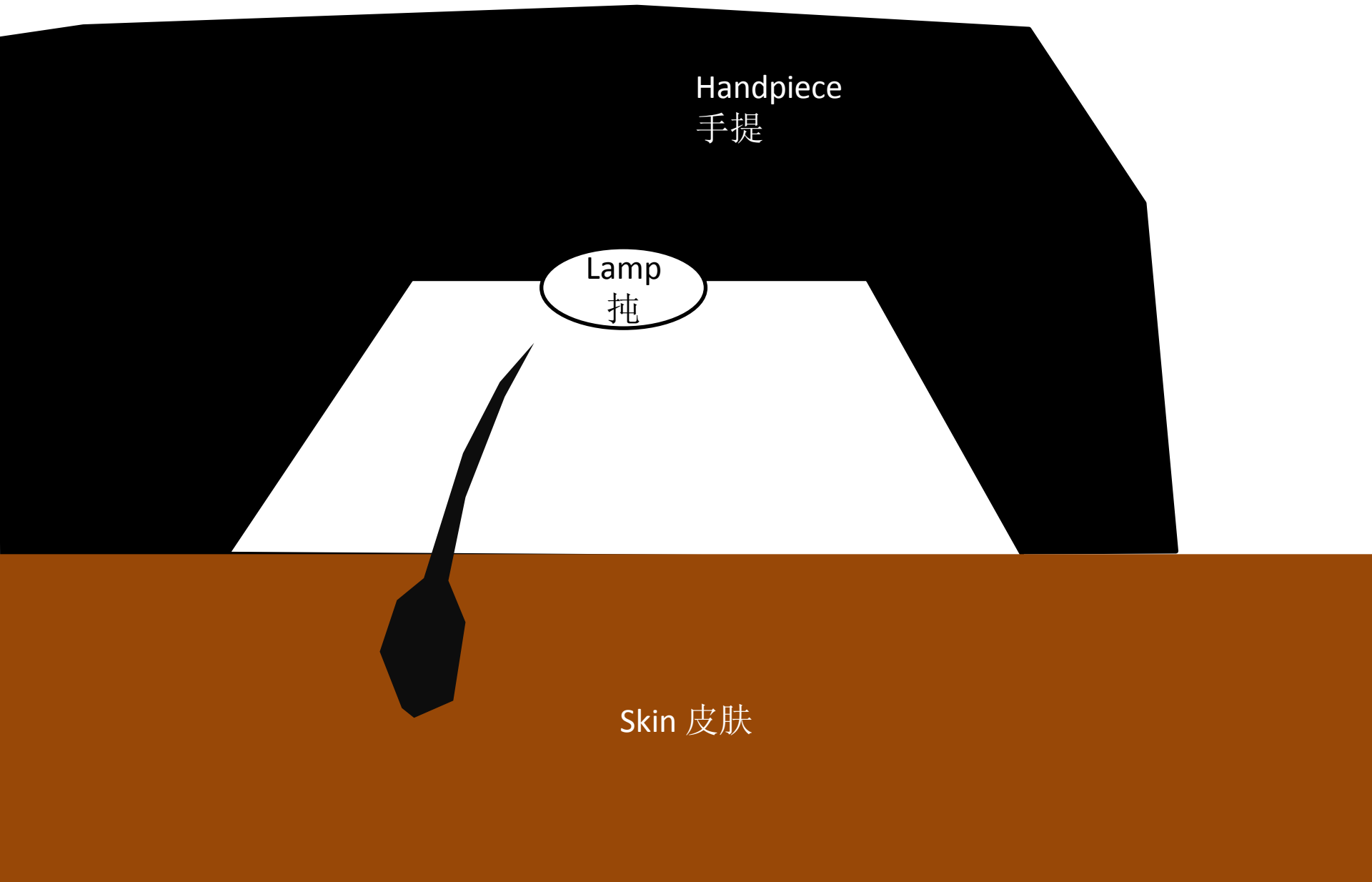
凝胶保护皮肤，过度的高光能量。

Níng jiāo bǎohù pí fū, guòdù de gāoguāng néngliàng.

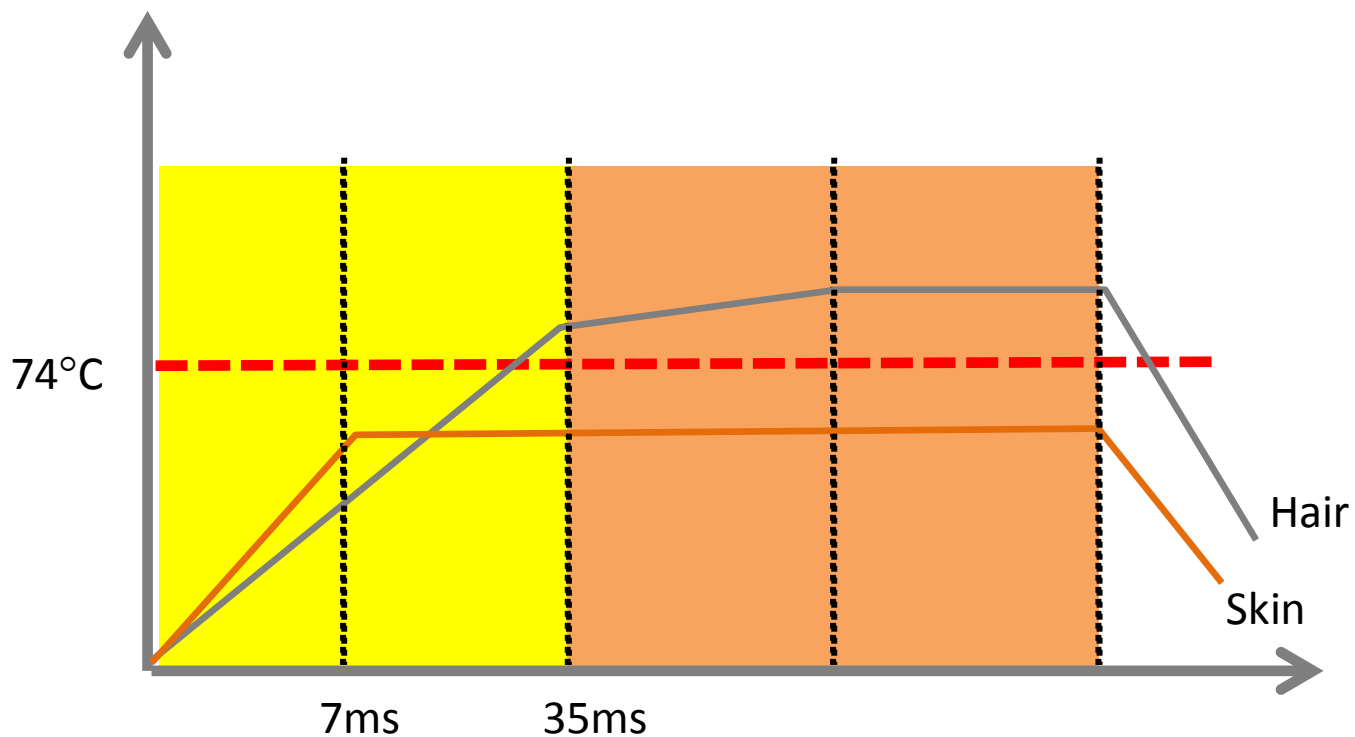
Principles of Light Heat Energy (LHE)



Principles of Light Heat Energy (LHE)



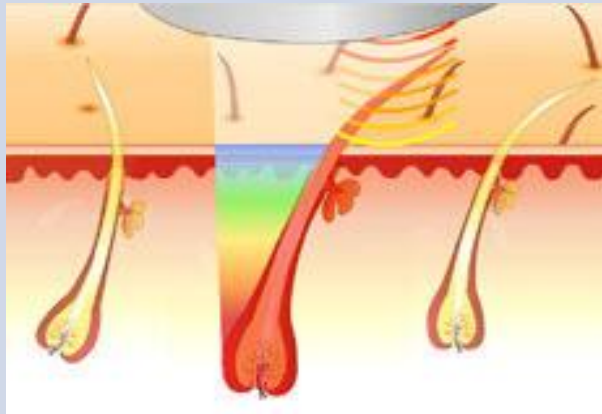

Light & Heat Energy



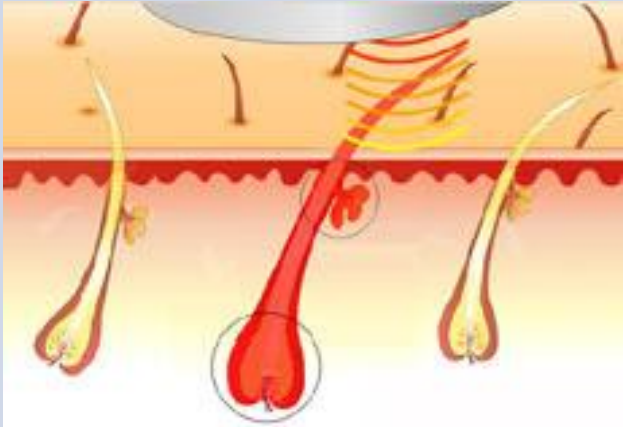
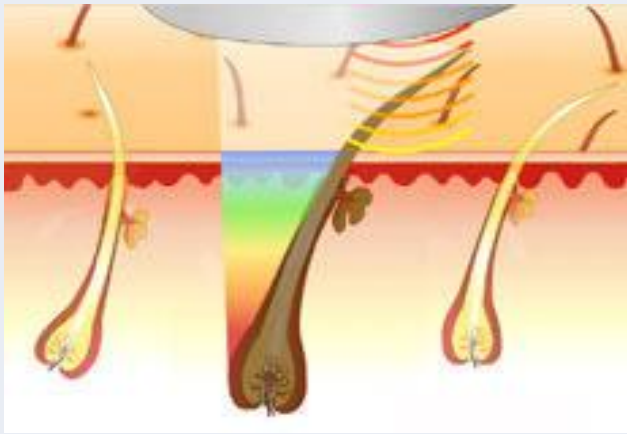
— 发热能源格局
fā rè néngyuán géjú

— 皮肤热能源格局
Pifu rè néngyuán géjú

How sLHE works in Hair removal?

Stage	Description	Illustration
1.	<p>Flashes of broad spectrum light is pulsed at the treatment area.</p> <p>强烈的光脉冲</p> <p>Qiángliè de guāng màichōng</p>	
2	<p>Melanin in the hair absorbs the LHE raising the temperature of the hair follicle.</p> <p>头发中的黑色素吸收光，使头发增加温度。</p> <p>Tóufǎ zhōng de hēisèsù xīshōu guāng, shǐ tóufǎ zēngjiā wēndù</p>	

How sLHE works in Hair removal?

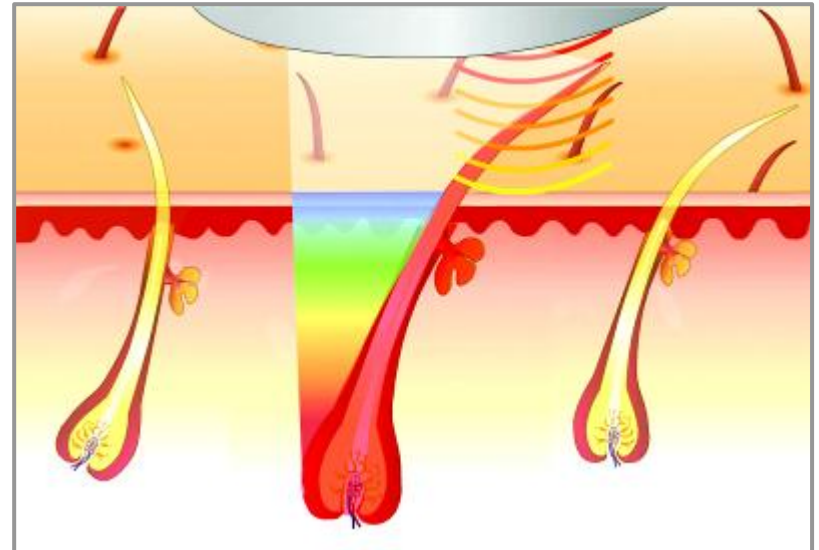
Stage	Description	Illustration
3.	<p>Heat energy further increases the hair shaft temperature.</p> <p>热能进一步增加头发轴的温度。</p> <p>Rènéng jìnyībù zēngjiā tóufǎ zhóu de wēndù.</p>	
4.	<p>LHE destroys the hair follicles.</p> <p>头发被摧毁而不伤害皮肤的光热能源的组合。</p> <p>Tóufǎ bèi cuīhuǐ ér bù shānghài pífū de guāng rè néngyuán de zǔhé.</p>	

How sLHE works in Hair removal?

Stage	Description	Illustration
5.	<p>Resulting in long term hair removal.</p> <p>LHE光线脱毛可以持续1至2年。</p> <p>LHE guāngxiàn tuōmáo kěyǐ chíxù 1 zhì 2 nián.</p>	

Summary

- Light energy applied from the light source is absorbed by the melanin, and transformed into heat.
- Simultaneously, heat energy from the light source is transmitted by the hair shaft down to the hair bulb.
- **The accumulative heat coagulates and destroys the hair follicle.**



7.0

SPA TOUCH ELITE (STE)

Technologies inside the STE

- The SPA Touch Elite (STE) is one of the most advance hair removal system in the skincare industry. It uses state of the art technologies not found in competitive products.
 - Radiancy's patented Light Heat Energy (LHE)
 - Smart Heat Accumulation Light Sequence (SHALS)



Smart
Heat
Accumulation
Light
Sequences

Specialized LHE specifications:

Technology	Specialized Light & heat energy (sLHE)
Wavelength range	400-1200nm 550-1200nm (sensitive)
Fluence range	3-12J/cm ²
Pulse duration	35 milliseconds
Physical dimensions	21*43*43cm
weight	8.5Kg

Technology - Light based devices

Light energy is transformed to thermal energy in the targeted tissue to generate desired clinical effect.

- Delivery of energy by Light photons.
- Photons are absorbed by the target tissue.
- The Light is transformed into Heat inside tissue.
- The Heat destroys the hair.

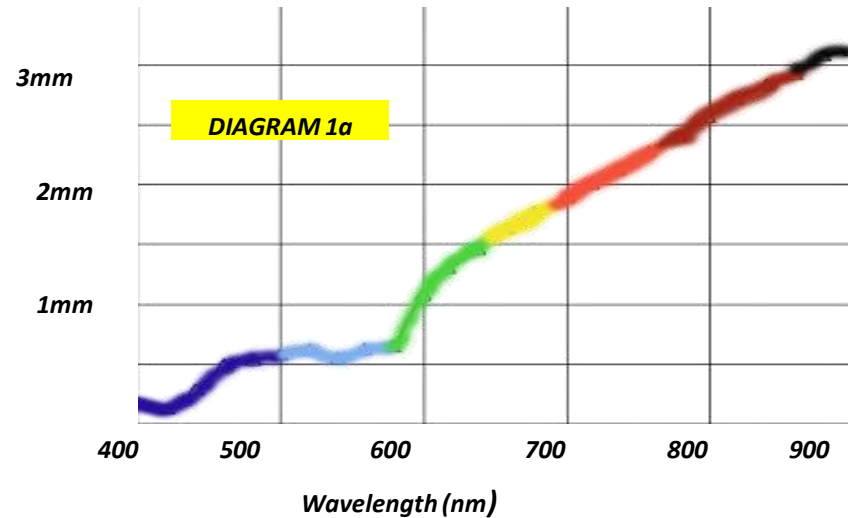
LHE Optimal Parameters (1)



- Since selective photothermolysis is based on optimization of light parameters to a selected target, **LHE** also optimizes light source parameters:
 - **Wavelength range**
 - **Pulse width (duration)**
 - **Spot size**

LHE Optimal Parameters (2)

Wavelengths

- Different wavelengths have different penetration depths. *The longer the wavelength, deeper the penetration.*



-  An average hair bulb is located 2-4 mm deep, requiring a wavelength range of between 600-1000 nm for effective penetration depth.
-  **LHE** wavelength range of 400-1200 nm ensures optimal penetration depth for hair removal from any site.

LHE Optimal Parameters (3)

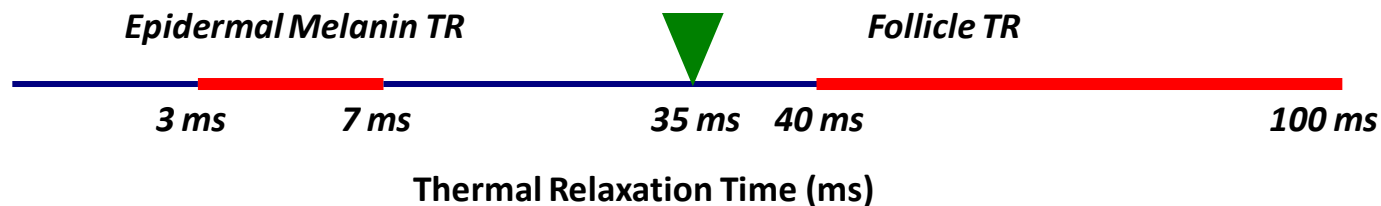
Pulse Duration

- Light is absorbed by melanin – in hair as well as in epidermis.
- **Thermal Relaxation Time** – the time required for a tissue to cool to 50% of the heated temperature (or: to start diffusing the heat)
 - Since the goal is to coagulate the hair without harming the epidermis, pulse duration should be longer than thermal relaxation time (TRT) of skin, and shorter than that of the hair.

LHE Optimal Parameters (4)

Pulse Duration

- Epidermal Thermal Relaxation time (TRT) 3-7ms
- Follicle Thermal Relaxation time (TRT) : 40-100ms (and up)
 - Depending on follicle diameter
- LHE uses a 35ms pulse duration to ensure optimal results without damage to surrounding skin **LHE Pulse duration**



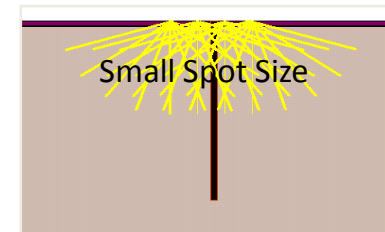
LHE Optimal Parameters (5)

Spot Size

- Penetration depth depends on spot size
 - Scattering - an important factor
 - Goal: maintain sufficient energy at the required depth

Small spot size:

- Small penetration depth
- Photons are scattered and lost



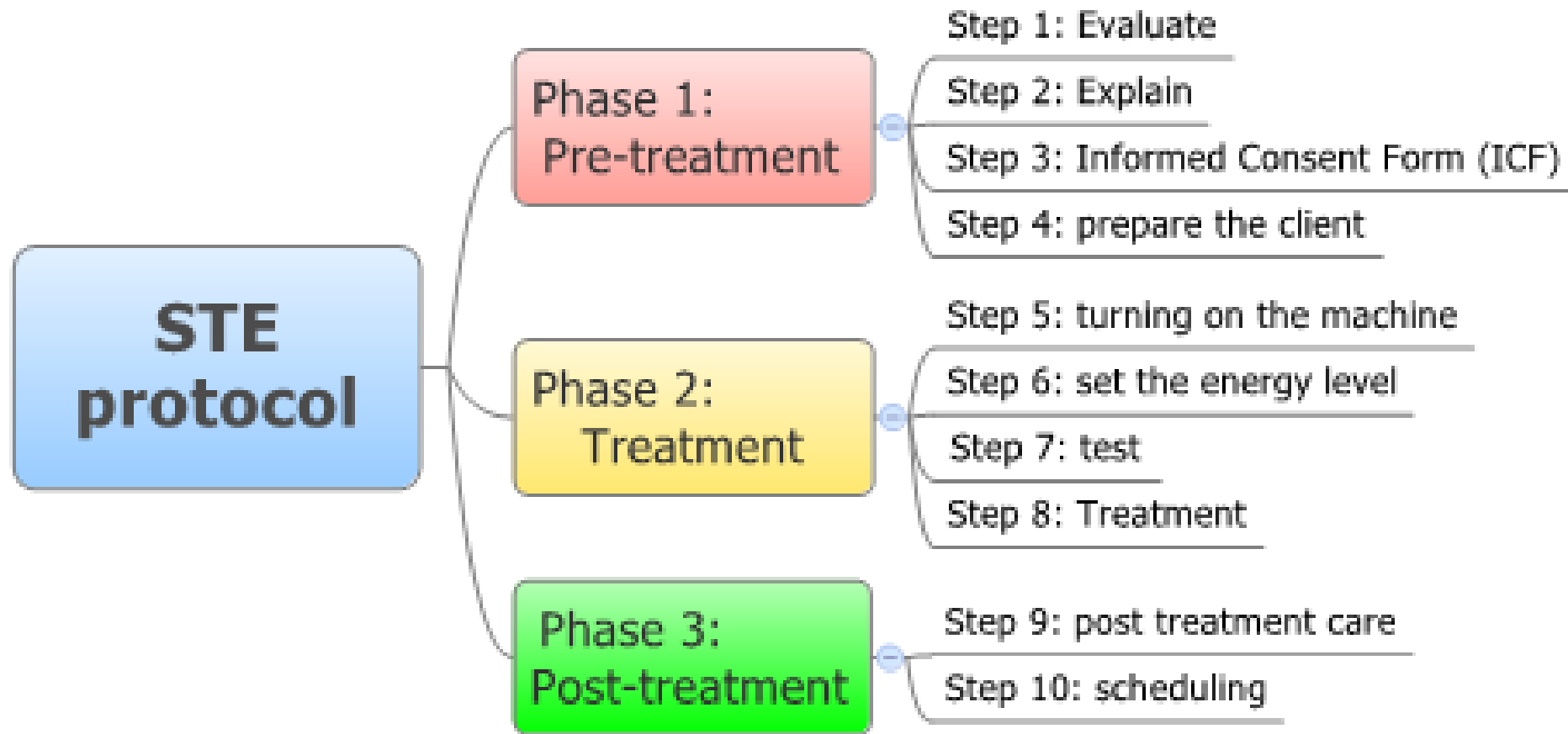
Large spot size:

- **Higher concentration of photons**
- **Larger penetration depth**

8.0

TREATMENT PROCEDURE治 疗过程ZHÌLIÁO GUÒCHÉNG

3 phases三个方面, 10 steps十部



Step 1: Evaluate 评估, 分析, 了解 Pínggū, fēnxī, liǎojiě

- Why?
 - To learn about the person you are treating. 每个人的皮肤和发布一样。所以你要知道它的历史。让和泥会决定对的方法退他的毛。
- Objective 目标:
 - Diagnose the correct power setting 决定对的力量, scheduling 决定对的时间表给顾客来脱毛
- Who?
 - Physician
 - Consultant

Step 1: Evaluate 评估, 分析, 了解

Pínggū, fēnxī, liǎojiě

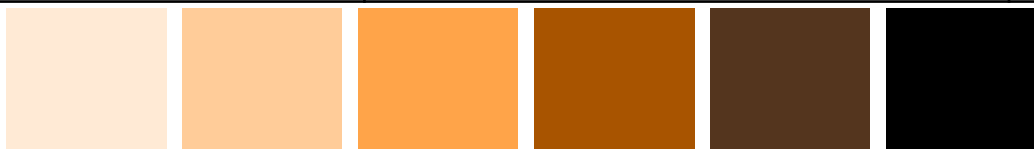
- Learn about the client's history
 - If yes to any of the following, use low power 不要用太讲的方法
 - Sensitive skin 铭感皮肤? Sensitive to creams and lotions?
 - Easily scarred 容易受疤痕? Do you see dark pigments around scars?
 - Epilation history.
 - What epilation methods has the client tried?
- Evaluate skin type using Fitzpatrick skin type
- Exclusion Criteria
- 了解客户的历史 Liǎojiě kèhù de lìshǐ :
 - 如果有以下任何, 使用低功耗 Rúguǒ yǒu yǐxià rènhé, shǐyòng dī gōng hào
 - 是她的皮肤敏感吗? Shì tā de pífū mǐngǎn ma?
 - 她的疤痕容易吗? Tā de bāhén róngyì ma? 你看她的任何疤痕周围黑暗的颜料? Nǐ kàn tā de rènhé bāhén zhōuwéi hēi'àn de yánliào?
 - 什么脱毛方法, 她试图吗? Shénme tuōmáo fāngfǎ, tā shìtú ma?
- 她是什么皮肤类型? Tā shì shénme pífū lèixíng?
- 她能处理吗? 她是否有任何禁忌症的标准呢? Tā néng chǔlǐ ma? Tā shìfǒu yǒu rènhé jìnjì zhèng de biāozhǔn ne?

Step 1: Evaluate

Evaluating skin type

Fitzpatrick Skin Type Definition

I	Always burns, never tans	总是灼伤，从不晒黑	Zǒng shì zhuóshāng, cóng bù shài hēi
II	Always burns, tans less than average.	总是烧伤，平均谭.	Zǒng shì shāoshāng, píngjūn tán.
III	Sometimes burns, tans average.	有时灼伤，晒黑.	Yǒushí zhuóshāng, shài hēi.
IV	Rarely burns, tans with ease.	很少烧伤，与容易被晒黑。	Hěn shǎo shāoshāng, yǔ róngyì bèi shài hēi.
V	Moderately pigmented, always tans	黝黑的皮肤，总是被晒黑	Yǒuhēi de pífū, zǒng shì bèi shài hēi
VI	Deeply pigmented, never burns.	很暗的皮肤。从来没有被晒黑	Hěn àn de pífū. Cónglái méiyǒu bèi shài hēi.



Type 1

Type 2

Type 3

Type 4

Type 5

Type 6

Step 2: Explain

- Explain to the client
 - the treatment procedure, expected results,
 - possibility of side effects, and
 - the importance of completing a full treatment course.
- Advise the client
 - Hair burning smell
 - There may be some discomfort, redness or swelling associated with the treatment. There is a minimal risk of more severe side effects such as blistering, changes in texture, and hypo or hyperpigmentation. These side effects are usually transient and should resolve themselves within a few months.
- 如果可能的话，是最好的，病人签署同意书（ICF）的确认：
 - 她解释有关预期成果和潜在的副作用
在这种情况下，
 - 她同意执行程序

Step 3: Informed Consent Form (ICF)

- I have understood the treatment procedure, expected results and potential risk that comes with the treatments. 我已经了解治疗过程中，预期结果和治疗的潜在风险。Wǒ yǐjīng liǎojiě zhìliáo guòchéng zhōng, yùqī jiéguǒ hé zhìliáo de qiánzài fēngxiǎn.
- I agree with the diagnosis and prescribed treatment. 我同意的诊断和治疗处方。Wǒ tóngyì de zhěnduàn hé zhìliáo chǔfāng.

Signature, Name, Date

Step 4: prepare the client 治疗前的准备工作 Zhìliáo qián de zhǔnbèi gōngzuò


1.0	<u>Trim</u>	Prior to treatment, hair should be trimmed to a length of 1-2 mm OR shaved 4-6 days before treatment	治疗前，头发要修剪到1-2毫米的长度或剃光治疗前4-6天
2.0	<u>Clean</u>	<u>Clean</u> the area to be treated. Do NOT use Alcohol/Acetone!	清洁要处理的区域。不要使用酒精。
3.0	<u>Dry</u>	Make sure that the area to be treated is dry.	确保面积的皮肤被视为是干。
4.0	<u>Cover</u>	<u>Cover</u> pigmented moles, dark facial moles with white sticker or any non-flammable material.	封面色素的痣，黑白色贴纸或任何非易燃材料的面部痣。
5.0	<u>Photograph</u>	It is highly recommended to take photos of the treated area before,	牌超要脱毛的地方。

Step 5: turning on the machine

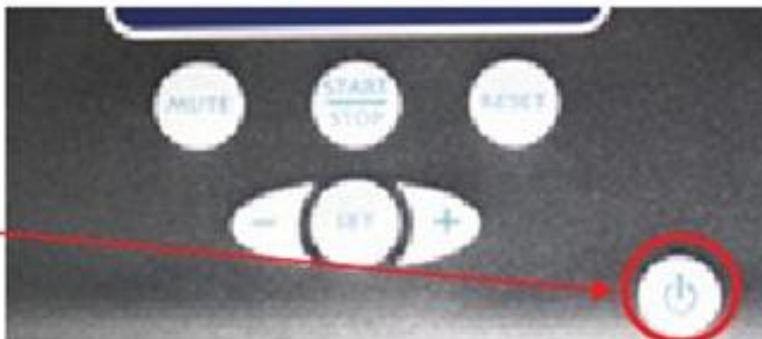
1. Turn on the main power switch

Main Power Switch



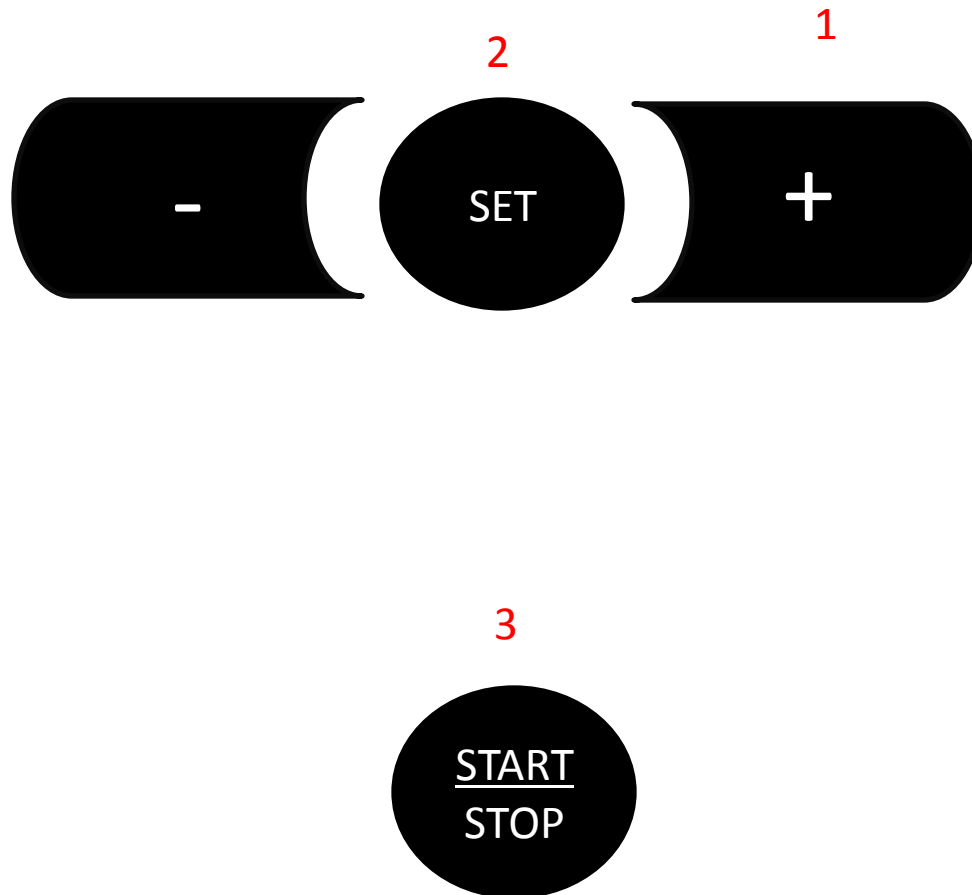
2. Press and release the on () button.

On/Off Button ()

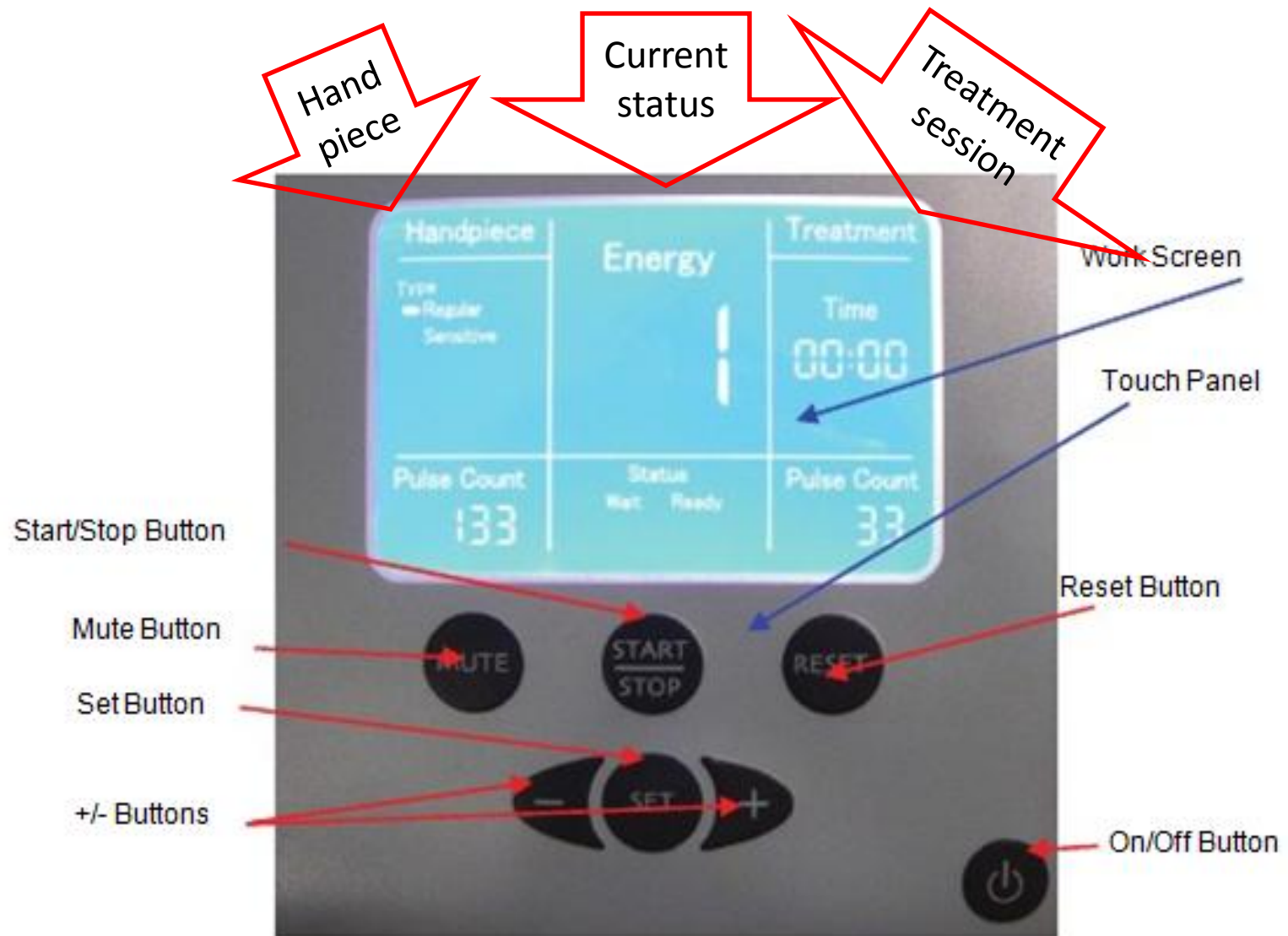


Test Energy Levels – choose the energy with the +/-, to increase or decrease by 10 – press and leave your finger. Once the energy is chosen press set and then start.

Step 6: set the energy level



Information on the STE screen



Step 7: test

Objectives:

1. Establish the pulse energy level for the patient's first complete session.
2. Test the patient's pain threshold.

测试的有效性和顾客的痛阈.

Cèshì de yǒuxiào xìng hé gùkè de tòng yù

Step 7: test -strategy

1. The energy levels in the TEST MODE are intentionally conservative and are meant as a starting point for individualizing treatment. 测试是故意低，意味着作为一个逐渐适应客户。Cèshì shì gùyì dī, yìwèizhe zuòwéi yīgè zhújiàn shìyìng kèhù
2. Test Energy Levels – choose the energy with the +/-, to increase or decrease by 10 – press and leave your finger. Once the energy is chosen press set and then start.

Step 7: test – energy tables

	Skin Type I	Skin Type II	Skin Type III	Skin Type IV	Skin Type V	Skin Type VI
1st Pulse	35	30	25	20	10	0
2nd Pulse	40	35	30	25	15	5
3rd Pulse	55	50	45	40	20	5

Step 7: test – method

- Always remember that those energies are just for test, the energies for treatments are usually higher.
- Perform a maximum of 3 test pulses in a single session, as customers may have delayed reaction.
 - It is recommended to wait at least 24 hours before performing another test session or before administering the treatment.
- 使用实际治疗高能量设置。
- 在一个会话中的至少3个测试脉冲。

Step 7: test – results 结果

- You should look for one of the following results after the pulse::
 - Darkening/Burning of the hair
 - Bleaching of the hair
 - Peri-follicular erythema - skin redness around the hair (immediately or 10-15 seconds after pulsing)
 - Most important: ask the customer.
- 你应该寻找一个脉冲后的结果如下:
 燃烧的头
 头发漂白
 10-15秒后, 皮肤发红
 最重要的, 问她怎么感觉的客户。
 Nǐ yīnggāi xúnzhǎo yīgè màichōng hòu de jiéguǒ rúxià:
 Ránshāo de tóufǎ
 Tóufǎ piǎobái
 10-15 Miǎo hòu, pífū fà hóng
 Zuì zhòngyào de, wèn tā zěnmē gǎnjué de kèhù.



Step 7: test – notes

- Optimize each test procedures for each patient and each treatment area.
 - Optimal working energy level settings differ from patient to patient, even among those with the same skin type
 - Energy setting is also different for different treatment areas .
- 寻找最佳能量设置为不同的病人和不同地区。
 - 节能设置可能会针对不同客户的不同。
 - 节能设置可能是身体的不同部位而有所不同。

Step 8: Treatment

- small areas
 - The Small Area Adaptors should be used when treating small areas such as toes, fingers, between the eyes and upper lip.
 - For hygienic reasons clean the area adaptor between patients with a soft, damp cloth, as you would the hand piece.
 - No energy level adjustments are necessary when using the small area adaptors.



Step 8: Treatment

- Hygienic Rings
 - Use a new hygienic ring for each client.
 - Simply place the hygienic ring over the lamp opening and push gently into place.
- 卫生戒指
为每个客户端使用新的卫生环。
只需放置在灯开的生环，轻轻推入到位。
- Wèishēng jièzhǐ
Wèi měi gè kèhù duān shǐyòng xīn de wèishēng huán.
Zhǐ xū fàngzhì zài dēng kāi de shēng huán, qīng qīng tuī rù dào wèi.

Step 8: Treatment

- method
 - Make sure you record the power setting
 - Proceed with treatment
 - Use ice pack / cooling pack (2 sec.) before and after pulsing if your customer requests or when your client complains about discomfort or skin redness is observed.
 - Remove the handpiece from the skin and your foot from the footswitch between pulses.
 - No overlapping is necessary. If unavoidable, keep overlapping to a maximum of 5%.
 - Excessive Energy Level – Stop treatment if overall redness of the treated area is observed.
 - Perform 1 pass for each treatment.
- 确保您记录的功率设置
使用前2秒后脉冲冰袋
从皮肤和你的脚从脚踏板的触发脉冲
后机头。
没有重叠是必要的。
停止治疗，观察治疗部位整体发红。
执行一轮每次治疗。
- Quèbǎo nín jìlù de gōnglǜ shèzhì

Shǐyòng qián 2 miǎo hòu màichōng
bīngdài
Cóng pífu hé nǐ de jiǎo cóng jiǎo tàbǎn
de chùfā màichōng hòu jī tóu.
Méiyǒu chóngdié shì bìyào de.
Tíngzhǐ zhìliáo, guānchá zhìliáo bùwèi
zhěngtǐ fà hóng.
Zhíxíng yī lún měi cì zhìliáo.

Step 8: Treatment

- Tips

- When treating body parts like knees or bikini line make sure the skin is stretched to prevent the body parts from touching the lamp.

在治疗膝盖或比基尼线等身体部位，确保皮肤被拉伸，以防止身体各部位，触摸灯。

Zài zhìliáo xīgài huò bǐjīnī xiàn děng shēntǐ bùwèi, quèbǎo pífū bèi lā shēn, yǐ fángzhǐ shēntǐ gè bùwèi, chù mō dēng.

Step 8: Treatment

- Results
 - Synching and Bleaching of hair
 - Although some hairs may remain intact, most bleached and/or burned hairs usually fall out within two weeks of treatment.

Step 9: post-treatment care

Don'ts

- Within 24 hours
 - Avoid using any harsh topical that might irritate the skin, such as skin peels for 24 hours.
 - Avoid using hot water immediately after treatment for 24 hours
- Within a month
 - Avoid sun exposure one month prior, during and after the treatment and use protective sun block.
 - Use skin moisturizer

Do's

- Immediately after treatment
 - Makeup/deodorant can be applied immediately.
 - Clients should be instructed to cleanse skin with lukewarm water and gentle soap, and hydrate it with a suitable moisturizer.
- 21 days before and following treatment:
 - Clients may shave from 2-3 days after treatment until 1 week before the next treatment.

Step 9: post-treatment care

注意事项做

24小时内

避免使用任何恶劣的局部可能会刺激皮肤，如24小时脱皮。

避免使用后，立即治疗24小时热水

在一个月之内

尽量避免阳光曝晒一个月之前，期间和之后的治疗，并使用保护性防晒。

使用皮肤保湿。

Zhùyì shìxiàng zuò

24 Xiǎoshí nèi

Bìmiǎn shǐyòng rènhé èliè de júbù kěnéng huì cìjī pífū, rú

24 xiǎoshí tuōpí.

Bìmiǎn shǐyòng hòu, lìjǐ zhìliáo 24 xiǎoshí rè shuǐ

Zài yīgè yuè zhī nèi

Jǐnliàng bìmiǎn yángguāng pùshài yīgè yuè zhīqián, qíjiān

hé zhīhòu de zhìliáo, bìng shǐyòng bǎohù xìng fángshài.

Shǐyòng pífū bǎoshī.

可以做

治疗后，立即

化妆/除臭剂可以立即应用。

应客户的指示来清洁皮肤，用温水和温和的肥皂和水合物它一个合适的保湿。

21天前和治疗后：

客户可以刮胡子的下一步治疗，治疗后2-3天，直到1个星期。

Kěyǐ zuò

Zhìliáo hòu, lìjǐ

Huàzhuāng/chú chòu jì kěyǐ lìjǐ yìngyòng.

Yīng kèhù de zhǐshì lái qīngjié pífū, yòng wēnshuǐhé wēnhé de féizào hé shuǐ hé wù tā yīgè héshì de bǎoshī.

21 Tiān qián hé zhìliáo hòu:

Kèhù kěyǐ guā húzi de xià yībù zhìliáo, zhìliáo hòu 2-3 tiān, zhídào 1 gè xīngqī qián.

Step 10: scheduling

Treatable areas	Facial Hair	Back, Hands, Arms, hands, Bikini Line, Around pubic areas (Brazilian), Legs
Recommended number of treatments	<ul style="list-style-type: none"> • 6-10 treatments 	<ul style="list-style-type: none"> • 8-12 treatments
Treatment intervals	<ul style="list-style-type: none"> • Once per week for the first 2 months • Gradually lengthen the interval to 2-3 weeks and longer as needed (after 30% regrowth occurs) 	<ul style="list-style-type: none"> • 4 to 8weeks between each session
Early termination	<ul style="list-style-type: none"> • Evaluate after 4th treatment. If there no hair reduction (minimum 30%), terminate the treatment. 	
Maintenance	<ul style="list-style-type: none"> • Once per 6 months – 1.5 years 	

9.0

GENERAL GUIDELINES

Contraindications for treatment

是谁不可以手sLHE

- LHE hair removal treatment should not be performed in the following conditions:
 - Are pregnant or lactating.
 - Have tanned by the sun or artificial tanning machine within the last 21 days.
 - Have a tattoo or permanent makeup in the treatment area.
 - Have abnormal skin conditions due to different diseases, conditions (e.g. diabetes) or medicinal intake.
 - Have a history of skin disorders such as vitiligo or psoriasis in the treatment area.
 - Have a history of local skin infections.
 - Have been treated with isotretinoin (Accutane) within the past 6 months.
 - Have used any medications, herbal preparations or chemicals that cause photosensitivity, within the past 6 weeks. These include but are not limited to gold therapy, tetracycline or sulfa drugs, and certain psychiatric medications.
- In case of uncertainty regarding photosensitizing side-effects, have the patient consult their physician.
- Suffer from **epilepsy**.
- Have **diseases related to photosensitivity**, such as Porphyria, Polymorphic Light Eruption, Solar urticaria, Lupus and other autoimmune diseases.
- Have a **history of herpes** outbreaks in the treatment area, unless the patient has consulted their physician and received prophylaxis treatment prior to treatment.
- Have a **history of skin cancer** or patients who have areas of potential skin malignancies.
- Have received **chemotherapy or radiotherapy treatments within the past 5 years** should not be treated without their acting physician's consent.
- Have been on a **steroid regimen** (i.e. for asthma) over the last 3 months.
- Have an **active implant**, such as a pacemaker, incontinence device, insulin pump, etc.
- Have any other condition which in the practitioner's opinion would make it unsafe for them to be treated.

Indications 谁能用这个机器

- Clients in good general health
- 18 years of age or older
- Skin Types I-VI according to Fitzpatrick Skin Type Classification.

Treatable Areas

- Face
 - Back 被
 - Neck 竟
 - Arms
 - Hands
 - Bikini Line
 - Around pubic areas (Brazilian)
 - Legs
- 面对 Miàn duì
 - 背面 Bèimiàn
 - 颈部 Jǐng bù
 - 武器 Wǔqì
 - 手 Shǒu
 - 比基尼线 Bǐjīní xiàn
 - 耻骨区周围（巴西） Chǐgǔ qū zhōuwéi (bāxī)
 - 腿 Tuǐ

Hirsutism or hypertrichosis

- **Hirsutism:** excessive and increased hair growth in women in locations where the occurrence of terminal hair normally is minimal or absent
- **Hypertrichosis:** hair density or length beyond the accepted limits of normal for a particular age, race, or sex.
- **Setting expectations**

The patient should be informed that the number of treatments needed for acceptable removal cannot be pre defined, that additional maintenance treatments may be required, and that due to their medical condition.

Precautions for customer

- Delivering excessive energy to the treatment site may cause thermal damage to the skin, resulting in burns, crusting, or abnormal pigmentation.
- As a safety precaution, always have a first aid kit equipped to treat burns at your disposal. Although SpaTouch Elite is considered an “eye-safe” device when operated according to instructions, supplying clients SpaTouch Elite User Manual

SYSTEM DESCRIPTION

- with protective eyewear during facial treatment will provide extra protection against discomfort from light exposure.

Precautions for operators

- Delivering excessive energy to the treatment site may cause thermal damage to the skin, resulting in burns, crusting, or abnormal pigmentation.
- As a safety precaution, always have a first aid kit equipped to treat burns at your disposal. Although SpaTouch Elite is considered an “eye-safe” device when operated according to instructions, supplying clients SpaTouch Elite User Manual

SYSTEM DESCRIPTION

- with protective eyewear during facial treatment will provide extra protection against discomfort from light exposure.

LHE Hair Removal:

Dark skin Treatment Tips

- Be aware that dark skin will not react during the treatment but only after a few hours.
 - Use the minimal effective energy that burns the hair. You may consider using the ruby HP/LUA for treating skin type VI patients.
 - Use ice pack for 2 seconds before the pulse and at least 2 seconds after the pulse.
 - Cool the skin for at least 10 minutes after treatment.
- 要知道，黝黑的皮肤会期间，仅在几个小时后接受治疗，但还没有反应过来。
 - 使用最小的有效能量，烫过的头发。您可以考虑使用治疗皮肤类型VI患者的红宝石惠普/ LUA。
 - 前2秒脉冲和脉冲后至少2秒，使用冰袋。
冷却至少10分钟，治疗后皮肤。

LHE Hair Removal:

Facial Hair Treatment Regimen

- Facial excessive hair is generally obstinate and one of the hardest conditions to treat for successful long term removal.
- Treatment intervals: 1-2 times per week for the first 2 months and then gradually lengthen the interval to 2-3 weeks and longer as needed (after 30% regrowth occurs)
- Early termination treatment procedure results should be evaluated after 4-7 treatments, depending on the case.

If the practitioner does not observe at least 30% reduction of hair they should consider, together with the patient, the possibility of early termination

- 面部过多的头发是一般的顽固性和治疗成功的长期去除最难的条件之一。
治疗间隔时间：每周1-2次，前2个月，然后逐渐延长间隔2-3周和更长的需要（30%的再生发生后）

4-7疗程后，视情况而定，应评估提早终止治疗过程的结果。
如果医生不遵守减少至少30%的头发，他们应该考虑，与病人一起，提前终止的可能性

LHE Hair Removal:

Blond Hair Treatment Tips

- For treatment - Use energy levels that will bleach or burn the hair
- Use ice pack immediately after the pulse for at least 3 seconds.
- In case some of the hair did not burn or bleach – you may perform another pulse on the same place. Place the ice pack immediately after the pulse for at least 10 seconds.
- Treatment protocol should be according to the area treated –
 - Body hair – according to body hair treatment protocol
 - Facial hair – according to facial hair protocol.
- Early termination be aware that red hair will not respond well to treatment since the melanin type is different. treatment procedure results should be evaluated after 4-7 treatments, depending on the case.

If the practitioner does not observe at least 30% reduction of hair they should consider, together with the patient, the possibility of early termination

- 对于漂白剂或烧头发的治疗 - 使用能量水平后立即使用冰袋，至少3秒钟的脉搏。
- 如果头发没有燃烧或漂白剂 - 你可以在同一个地方执行另一个脉冲。
- 至少10秒钟的脉搏后立即放置冰袋。

治疗方法应根据处理的区域

- 体毛
- 体毛处理协议
- 面部毛发 - 根据面部毛发协议。
- 提前终止知道红头发不会反应良好治疗，因为黑色素的类型是不同的。治疗过程的结果，应评估4-7治疗后，根据情况。
- 如果医生不遵守至少30%的头发，他们应该考虑减少与病人一起，提前终止的可能性

10.0

EQUIPMENT MAINTENANCE

Consumables: Handpiece Replacement

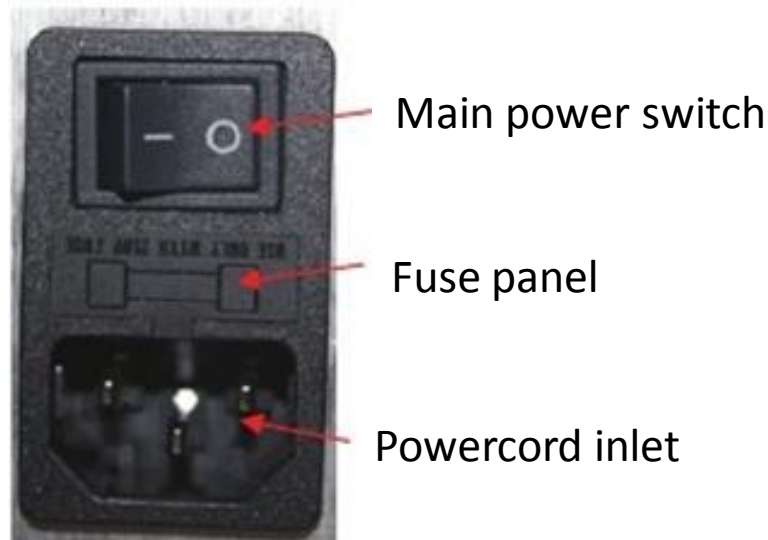
- The handpiece must be replaced every 20,000 pulses.
- Remove the handpiece from the system and return it to [Lifvation](#) for a replacement.
- Remove the handpiece by pressing down on the top button and pull it out.
- 每20000个脉冲，必须更换机头。
从系统中卸下机头和返回更换 Lifvation。
按下顶部的按钮上卸下机头和拉出来。
- Měi 20000 gè màichōng, bìxū gēnghuàn jī tóu.
Cóng xìtǒng zhōng xiè xià jī tóu hé fǎnhuí gēnghuàn Lifvation.
Àn xià dǐng bù de ànniǔ shàng xiè xià jī tóu hé lā chūlái.

Important Note

Replacing Hand piece Re-test – Each time a Hand piece is replaced with a new one, testing procedure for all existing patients should be repeated.

Fuse Replacement

- Turn off the unit and disconnect the system from the electrical outlet.
- Wait 5 minutes.
- Pull out the fuse drawer located in the back panel.
- Replace the fuse and push the drawer back into position.



Cleaning

Use this end to clean between the lamps and reflector.



Use this end to clean between the lamps



11.0

NOTES

Glossary

STE	SpaTouch Elite
HR	Hair Removal application
HP	Hand Piece
LHE	Light Heat Energy
sLHE	Specialized Light Heat Energy

12.0

ABOUT RADIANCE



Corporate Information

- US based company since 1998
- **Global Market Leader** – Over 100,000 devices installed in more than 60 countries worldwide
- Products cleared by **CE** and **US FDA**
- ISO 13485 certified
- **Patented LHE Technology**
- **www.radiancy.com**