



Toll Free: 1-800-579-8088 Web: www.zinko.com

MODEL

ZBR-20A

Portable Bead Breaker

Operation & Maintenance Manual

Important Receiving Information

Inspect all parts for shipping damage. If you find any damage, notify the carrier at once. **Shipping damage is not covered by your warranty.** The carrier is responsible for all costs of replacement or repair caused by shipping damage.

Description

The ZBR-20A Bead Breaker is used on all types of rims except 5 piece Earthmover rims. It is ideal for use with trucks, farm tractors, grader, combine, and skidder tires.

Caution Remarks Used In This Manual

▲ DANGER is only used when your action or lack of action can cause serious injury or death.

▲ WARNING indicates a potential danger that requires correct procedures or practices to avoid personal injury.

▲ CAUTION is used to indicate correct operating maintenance procedures and practices to prevent damage to or destruction of equipment or other property.

Safety Information

To avoid personal injury or property damage while using this product, read and follow all **DANGERS, WARNINGS, CAUTIONS,** and **INSTRUCTIONS** that are attached to, or included with this product.

Operator Responsibility

It is the operator's responsibility to read and understand all of the following safety statements:

▲ WARNING

1. Follow the instructions of the tire manufacturer and the vehicle manufacturer when deflating, mounting, demounting, and inflating tires.
2. These operating instructions DO NOT apply to any specific rim. Therefore, contact the rim manufacturer for the correct procedure for your rim.
3. To avoid serious personal injury, always wear proper protective gear, such as hard hats, safety glasses, gloves, and steel-toe shoes when using hydraulic equipment.

▲ CAUTION The Bead Breaker, and all tire tools should be used only by persons properly trained according to OSHA regulation #29CFR1910.177, "Servicing Single-Piece & Multi-Piece Wheels." Free copies of this regulation are available upon request from **ZINKO**.

NOTE: ZINKO cannot be held responsible for damage or injury resulting from unsafe use of this product, lack of maintenance, or incorrect product and system application. Contact **ZINKO** when in doubt about safety precautions or applications.

Operating Instructions

Removing the Wheel

1. Chock the wheels opposite the jack.
2. Jack up the vehicle.
3. Crib the vehicle with safety stands or blocking devices after jacking it up.
DO NOT WORK UNDER AN UNBLOCKED LOAD.

▲ DANGER Failure to chock the wheels and crib the vehicle can result in serious injury or death.

4. Remove the valve core; deflate tires completely.
5. Insert a thin piece of wire through the valve stem to make sure air is flowing freely and the valve stem is not blocked.

NOTE: Deflate both tires if you have dual mounting.

▲ DANGER Always deflate tires before removing a wheel, a rim, or part of a rim, such as rim clamp or nut. If you do not deflate the tire, the tire could explode causing serious injury or death.

- 6a. If you are breaking the tire bead with the wheel on the vehicle; proceed to *Positioning the Bead Breaker* below.
- 6b. If you are breaking the tire bead with the wheel off the vehicle; remove the tire/rim assembly from the vehicle and place it flat on the ground with the gutter side up. Then proceed to *"Positioning the Bead Breaker"* below.

Zinko Hydraulic Jack

Model: ZBR-20A Operating Instructions (*Continued*)

Positioning the Bead Breaker

Position the Bead Breaker so that the wedge-shaped teeth will grab evenly under the rim flange when the clamping jaw tightens.

NOTE: Make sure the Bead Breaker is about 30", or at least 12", to one side of the flange butt weld.

Activating the Bead Breaker



The Bead Breaker uses a long stroke and high force. Be careful not to damage or bend rim parts, such as the flange, when using the Bead Breaker.

1. Run the air hydraulic pump so that the clamping jaw begins to tighten against the rim. Make sure the wedge shaped teeth are placed well into the tire bead and against the rim flange.

NOTE: To grab the rim flange evenly, you may have to try several times. **DO NOT** force the Bead Breaker when grabbing the flange.

2. Continue to apply hydraulic pressure until the bead breaking ram extends about 1/4" from the Bead Breaker.
3. Maintain the Bead Breaker so that it is nearly perpendicular 90 degrees to the rim. If necessary, adjust the position of the Bead Breaker.
4. Step away from the Bead Breaker.



Always stand to one side of the rim when using the OTR Bead Breaker. Standing to one side of the rim allows you to maintain control of the Bead Breaker.



DO NOT hold the OTR Bead Breaker when breaking the tire bead. If it is not seated properly and flies off the rim, the Bead Breaker could cause serious injury or death.

5. Continue to apply hydraulic pressure until the bead breaking ram extends 1/2" to 3/4" from the bead breaker.

NOTE: Never try to break the tire bead with only one push. Instead, proceed to *Continuing to Break the Tire Bead*.

Continue to Break the Tire Bead

1. Move the OTR Bead Breaker 8" to 12" from its current position.
2. Repeat steps, starting with *Positioning the Bead Breaker* until the rim is **completely** separated from the tire bead.

Breaking the Bead on the Other Side

1. Turn the tire over on the other side.
2. Repeat all steps, starting with *Positioning the Bead Breaker*.

Mounting and Inflation

Jacking Up the Vehicle

1. Chock the wheels opposite the jack.
2. Jack up the vehicle.
3. Crib the vehicle with safety stands or blocking devices after jacking it up. **DO NOT** work under an unblocked load.



Failure to chock the wheels and crib the vehicle can result in serious injury or death.

Conversion Kits

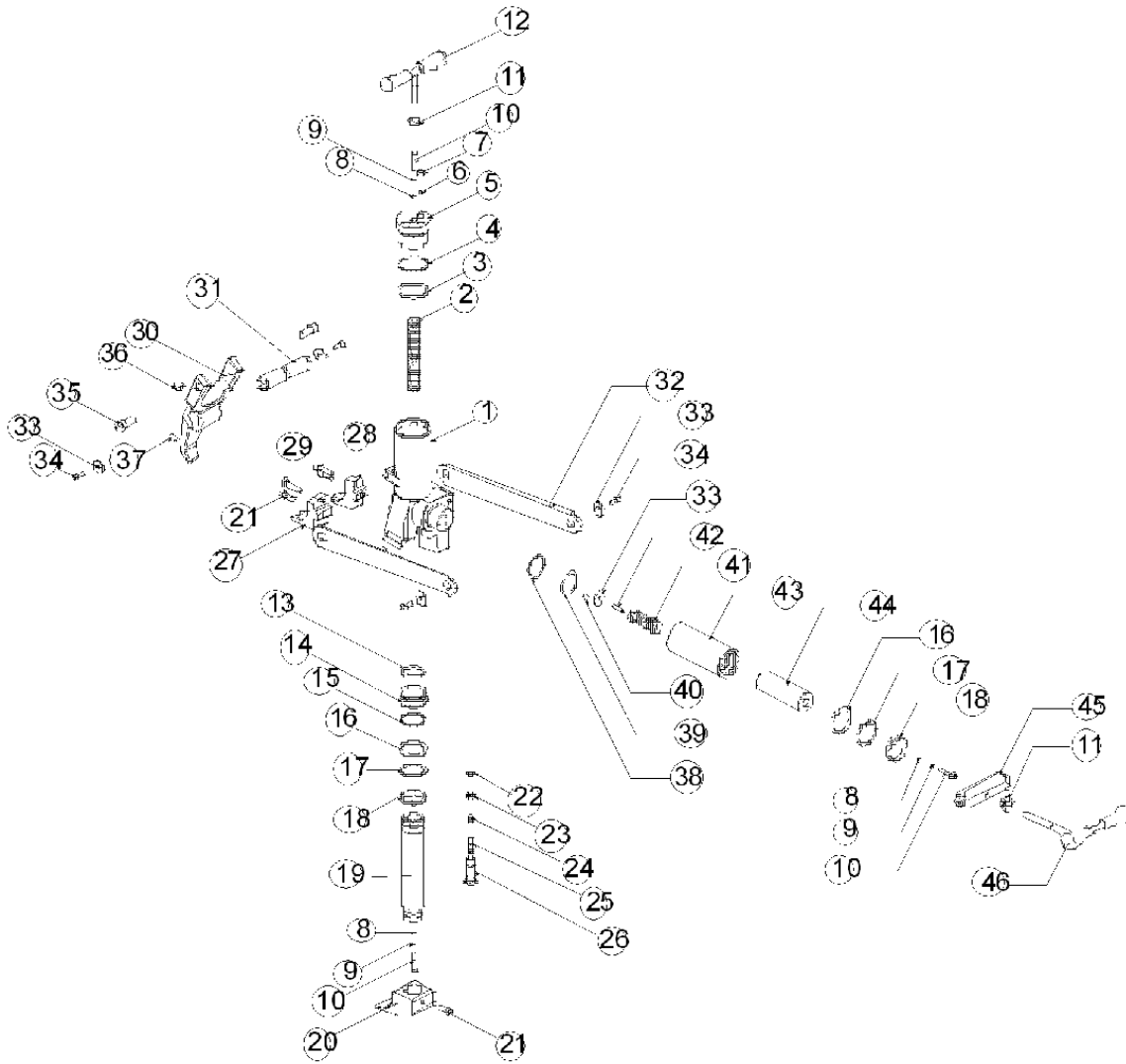
ZBR-20B adapts to bead breaker for use with larger rim size.

1. Interchanges with the special longer adapter feet and shovel.
2. Allowing the rim size R24 to R25.
3. Jaw opens to : 6-1/8".
4. Weight: 4.4 lbs.



Zinko Hydraulic Jack

Models: ZBR-20A Parts Breakdown



Part #	Description
1	Body
2	Spring
3	O-Ring
4	Backup Ring
5	End Plug
6	Steel Ball
7	Screw Pin
8	O-Ring
9	Backup Ring
10	Screw
11	Nut
12	Top Bar Handle

Part #	Description
13	Washer (Large)
14	Long Shaft Piston
15	Washer (Small)
16	O-Ring
17	Backup Ring
18	U-Cup Seal
19	Plunger
20	Shovel
21	Screw Pin
22	Washer
23	Switch (Male)
24	Switch (Female)

Part #	Description
25	Spring
26	Screw Pin
27	Right Feet
28	Left Feet
29	Screw
30	Claw
31	Axel
32	Link Rod
33	Washer
34	Screw Pin
35	Hook Screw Pin
36	Screw Pin

Part #	Description
37	Screw Pin
38	Backup Ring
39	O-Ring
40	Steel Ball
41	Spring
42	Screw Pin
43	Cylinder
44	Plunger
45	Support Bar
46	Handle



ZINKO HYDRAULIC JACK

PO Box 4903, Ontario, CA 91761

Toll Free: 1-800-579-8088

<http://www.zinko.com>

Phone: (909)989-9526

Fax: (909)989-1724