

**FRASER RIVER
ACTION PLAN**



**Fraser Point
Source
Inventory**

User's Manual



Environment
Canada

Environnement
Canada

DOE FRAP 1993-06

FRASER POINT SOURCE INVENTORY

Version 3.0

USER'S MANUAL

DOE FRAP 1993-06

Prepared for:

**Environment Canada
Fraser Pollution Abatement Office
224 West Esplanade
North Vancouver, B.C. V7M 3H7**

Prepared by:

**The University of British Columbia
Westwater Research Centre
2206 East Mall
Vancouver, B.C. V6T 1Z3**

Revised by:

**Information and Systems
224 West Esplanade
North Vancouver, B.C. V7M 3H7**

June 1994

Disclaimer

This publication contains the results of a project conducted under contract to Environment Canada. The ideas expressed herein do not necessarily state or reflect those of Environment Canada.

Comments regarding this publication should be addressed to:

Fraser Pollution Abatement Office
Environment Canada
224 West Esplanade
North Vancouver, B.C. V7M 3H7

TABLE OF CONTENTS

1.0 Introduction	1
2.0 Background	2
3.0 Installing the System	2
4.0 Running the Program	3
4.1 Using the Mouse	3
4.2 Using the Keyboard	4
4.3 System Security	4
4.4 Database Structure	5
4.5 Menu Hierarchy	5
4.6 Importing Data (File Submenu)	5
4.7 Exporting Data (File Submenu)	5
4.8 Viewing Data (View Submenu)	8
4.8.1 Navigating Through the Database	8
4.8.2 Exiting from the Screen Form	9
4.8.3 Site Data Screen	9
4.8.4 Outfall Data Screen	9
4.8.5 Parameter Data Screen	10
4.8.6 Changes to the Data	10
4.9 Editing Data (Edit Submenu)	10
4.9.1 New Records	11
4.9.2 Editing Existing Records	11
4.9.3 Deleting Records	11
4.10 Reporting (Reports Submenu)	12
4.10.1 Setting Printer Driver	12
4.10.2 Simple Form Reporting	12
4.10.2.1 Selecting Records	12
4.10.2.2 Advanced Record Selection (Filters)	12
4.10.3 Custom Reporting	13
4.10.4 Loading Calculations	13
4.11 Maintenance Submenu	13
4.12 Exiting the System	14
5.0 Maintaining the Database	14
5.1 Updates to the System	14
5.2 Backing Up the System	14
5.3 User ID and Password Maintenance	14

6.0 System Limitations	15
7.0 Summary and Recommendations	15
Appendix A Screen Snapshots.	A - 1
Figure 1. Opening screen of the Fraser PSI program.	A - 1
Figure 2. Main screen of the Fraser PSI program	A - 2
Figure 3. Selecting an option from the pulldown menu system	A - 3
Figure 4. The site information screen	A - 4
Figure 5. Outfall information screen with parameter browse table	A - 5
Figure 6. Producing a report.	A - 6
Figure 7. Setting a filter condition on the database.	A - 7
Appendix B System Structure	B - 1
Structure for database : DISCLIST.DBF	B - 1
Structure for database : LOADTAB.DBF	B - 1
Structure for database : OFFICE.DBF	B - 1
Structure for database : OUTFALL.DBF	B - 2
Structure for database : PARAM.DBF	B - 2
Structure for database : PARTABLE.DBF	B - 2
Structure for database : SICLIST.DBF	B - 3
Structure for database : SITE.DBF	B - 3
Structure for database : SITETYPE.DBF	B - 4
Structure for database : WASLIST.DBF	B - 4
Appendix C Coding Source	C - 1
Table 1. Origin of data and codes	C - 1
Appendix D Lookup Tables	D - 1
Table 1. Sub-basin watershed codes and descriptions	D - 1
Table 2. Region codes, descriptions, and the associated sub-basin.	D - 1
Table 3. B.C. MELP office codes and descriptions	D - 2
Table 4. Site industry codes and descriptions	D - 3
Table 5. B.C. MELP discharge to codes and descriptions	D - 33
Table 6. B.C. MELP waste type codes and descriptions.	D - 33
Table 7. B.C. MELP site type codes and descriptions	D - 34
Table 8. Parameter codes, descriptions, units, and upper limits	D - 35
Appendix E Import File Format	E - 1
Structure for database : SIMS.DBF	E - 1

LIST OF FIGURES

Figure 1. System Structure	6
Figure 2. Menu Hierarchy	7

1.0 Introduction

The pollution abatement component of the Fraser River Action Plan, an initiative under Canada's Green Plan, directs that action be taken to identify and control contaminants entering the Fraser River Basin from point and non-point effluent sources. The Fraser Point Source Inventory (FR_PSI) helps to address the need for a geo-referenced, personal computer-based inventory of wastewater sources in the Fraser River Basin.

Selective data from the B.C. Ministry of Environment, Lands and Parks WASTE permit management system and the Environment Canada Federal Facilities Environmental Activities Database (FFEAD) is contained in the FR_PSI database. This is supplemented by data from federal and provincial files, and from personal and telephone interviews. At the present time, only point-source site information and permit limits (not monitoring data) are included. Various reports can be performed on the data. These reports include summaries of loadings by sub-basin, region and SIC code. The data can also be exported to an ASCII file or DBF file for GIS mapping.

This database is written in FOXPRO 2.5. A mouse is optional but highly recommended. It will run on all 640K RAM IBM-compatible computers with a colour VGA monitor and a harddrive; however, the DOS-Extended version of the program will only run on 386 and 486 computers with more than 640K memory.

The information contained in this database represents a best effort to collect, compile and summarize the data available from many point sources of wastewater discharges in the Fraser River Basin. Any errors or omissions are not intentional.

The database is designed to be updated periodically by the Fraser Pollution Abatement Office as changes in permits occur.

Questions or comments regarding this database are welcomed and should be addressed to the Fraser Pollution Abatement Office at the following address:

Environmental Protection
Environment Canada
224 West Esplanade Avenue
North Vancouver, B.C. V7M 3H7

Telephone: (604) 666-3487
Facsimile: (604) 666-7294

2.0 Background

The provincial WASTE management system is a single file (flat-file) VAX-based database that contains data on all the wastewater discharge permits that are administered by the Environmental Protection Division of the B.C. Ministry of Environment, Lands and Parks. There is a record in the WASTE database for each parameter that is regulated in each permit. The permit allowances are specified by parameter code, permit number, and "waste" (outfall) number. Permit allowances are specified as a maximum or typical discharge of a particular parameter. Flow rates are also specified for each outfall. These flow rates are specified as an additional parameter record for each unique combination of permit number and "waste" (outfall) number. The WASTE system database structure does not allow for easy calculation of loadings (because flow and discharge information are in separate records in the same file), also the calculation of loadings results in redundant information in the database (because it is a single file database). Another disadvantage to the system is that facilities that are regulated federally are generally not included in the provincial database unless they have a provincial permit.

Therefore, the need the FR_PSI database was recognized in order to provide a PC-based geo-referenced database to allow for flexibility in analysis and reporting of information on point sources of wastewater discharges in the Fraser River Basin. The FR_PSI database has a relational (i.e. multi-file) structure which ensures that redundant data is minimized. The site, flow (outfall), and permit allowance data is maintained in separate files (tables). This simplifies the calculation of parameter loadings. Data from Environment Canada's FFEAD database, supplemented by information provided by federal government departments, is also maintained in the database.

3.0 Installing the System

The system needs about 6 Megabytes of disk space, and also requires a setting of FILES=50 in the CONFIG.SYS file (see your resident computer expert about how to modify this setting)

Insert Fraser Installation Disk 1 into drive A. (If you are installing from another drive, adjust the instructions accordingly.) Type the following at the DOS prompt and press **Enter** after each line:

```
A:          (to switch to the disk drive)
INSTALL    (to install the databases and program files)
```

Note: do NOT type "A:INSTALL" - the difference being that you need to press the **Enter** key after "A:" and once again after "INSTALL".

Now just follow the screen prompts, placing the appropriate disk in drive A as directed.

4.0 Running the Program

Ensure that your mouse is functional by activating it explicitly before executing the program (the commands to access the mouse driver are sometimes put into the AUTOEXEC.BAT file). The program will run without the mouse but it will not be as simple to use.

To run the program:

Type **Fraser** and press the **Enter** button

At the password entry window, the user must enter his/her password. The user should note that the password checking program is case sensitive. The system will not recognize the password if the CAPS LOCK key is on!!!

HELP is available on most of the subsequent screens by pressing the **F1** key or by clicking on the **<Help>** push button.

4.1 Using the Mouse

Mouse operations are performed using the left mouse key. Window manipulation is performed very much like window manipulation in Microsoft Windows 3.x. Windows can be moved by clicking on the top side of the frame and holding the left mouse button down while dragging the mouse. Windows are activated by clicking anywhere within a window (the colour of the window title changes when a window is activated). The window contents can be scrolled using the scroll bar indicators (on the right hand and bottom window frames) or resized by clicking and dragging on the lower right hand corner. Zooming to full-screen can be accomplished by clicking on the upper right hand corner of the window.

Push buttons are signified onscreen as words enclosed by angle brackets such as **<Save>** or **<< Ok >>**. Radio buttons and check boxes are signified as **()** and **[]**, respectively. They can be activated using the mouse or the space bar key. Radio buttons allow for users to select only one option from several options (i.e. checking one option unchecks all other options - for an example select Reports from the main menu, then Simple Form Reports). Check boxes allow users to select multiple options (see the Federal Regulatory Instruments screen, which is located by first viewing a permit, and selecting Federal Instruments within the Site Information screen). A checkbox may also trigger the display of other windows (e.g. dialogue boxes) such as what occurs when the Federal Instruments checkbox is checked on the Site Information screen.

Popup lists can be activated by clicking anywhere within the popup box. A pop-up list allows the user to select one item from a list of entries (e.g. sub-basin field on the Site Information screen).

The menu bar (pulldown menu) at the top of the screen is activated by clicking the mouse on the desired option.

A light blue colour for a push button, window, or menu option means that it is temporarily disabled or inactive.

4.2 Using the Keyboard

Most mouse operations can also be accomplished with the keyboard. To cycle between windows press **Ctrl-F1** - this is especially helpful when browsing all three databases. The pulldown menus can be activated by typing **Alt** + the highlighted letter on the menu bar. The choices offered by the control window, located on the right side of the site and outfall screens, can be activated by typing **Ctrl** + the highlighted letter. Tab and Shift-Tab move the cursor to the next field and previous field on the screen, respectively. Keyboard shortcuts are sometimes indicated beside a menu option such as "**Delete - ^D**" (Ctrl-D).

4.3 System Security

The system security prevents unauthorized access to the database and is also used to monitor and record changes to the database. The changes are stored in a transaction log file. The date of last update and the user name of the person who updated the record are stored with each of the database files. A separate paper transaction log should also be maintained of all changes to the database. The paper transaction log is needed to reconstruct the database if a disk problem occurs and changes have been made to the database since the last time it was backed up.

Assigning different security levels to different users allows the system administrator to control the access to different database functions. Currently, there are 3 security levels for the database (9,7,5). The top security level allows a user unrestricted access to the database. The second level permits the user to do anything except add new users and modify passwords. The third level restricts the user to viewing the data only and will not permit him/her to edit the data.

Users ID's and passwords are maintained through the System Administration menu bar in the Maintenance sub-menu. Passwords can only be changed by typing in the old password first.

Note: The low level access that most users are provided with only gives them access to viewing and reporting functions (as well, code tables in the Maintenance submenu may be viewed but not edited). The system will not allow changes made to the fields to be saved.

4.4 Database Structure

There are three main databases: site, outfall and parameter. They are organized in a relational database format. This serves to minimize database redundancy. There are also various code tables that store information about different codes in the site, outfall and parameter tables. For example, the parameter codes table contains the parameter code, the full name for the parameter, the units that the parameter should be in and the upper limit for the parameter.

Each of these tables is indexed. The indices speed up the time that it takes to access a record. A unique field or combination of field controls is necessary for each record in the table. For example, the Record ID or Record ID and waste number are used to control access to the site, outfall, and parameter records. Users should exercise extreme caution when editing these fields.

Figure 1 illustrates the database structure of the Fraser PSI system.

4.5 Menu Hierarchy

A menu bar is a feature of most FOXPRO applications. It acts as a pulldown menu which groups related system operations into submenus. The menu can be activated by clicking on the menu bar or by pressing **Alt** + the highlighted letter of menu option.

Figure 2 illustrates the menu hierarchy of the system.

4.6 Importing Data (File Submenu)

The system has the capability to import data from the provincial WASTE database. The import function prompts the user for the name and path to the file that is to be imported. The structure of this import file must conform to a rigid format (see Appendix E). **Caution:** the import function will overwrite changes made to WASTE data in FR_PSI since the last import.

4.7 Exporting Data (File Submenu)

Data can be exported to an ASCII or DBF file for use with a GIS system. The system prompts the user for the name and path of this export file.

Figure 1 System Structure

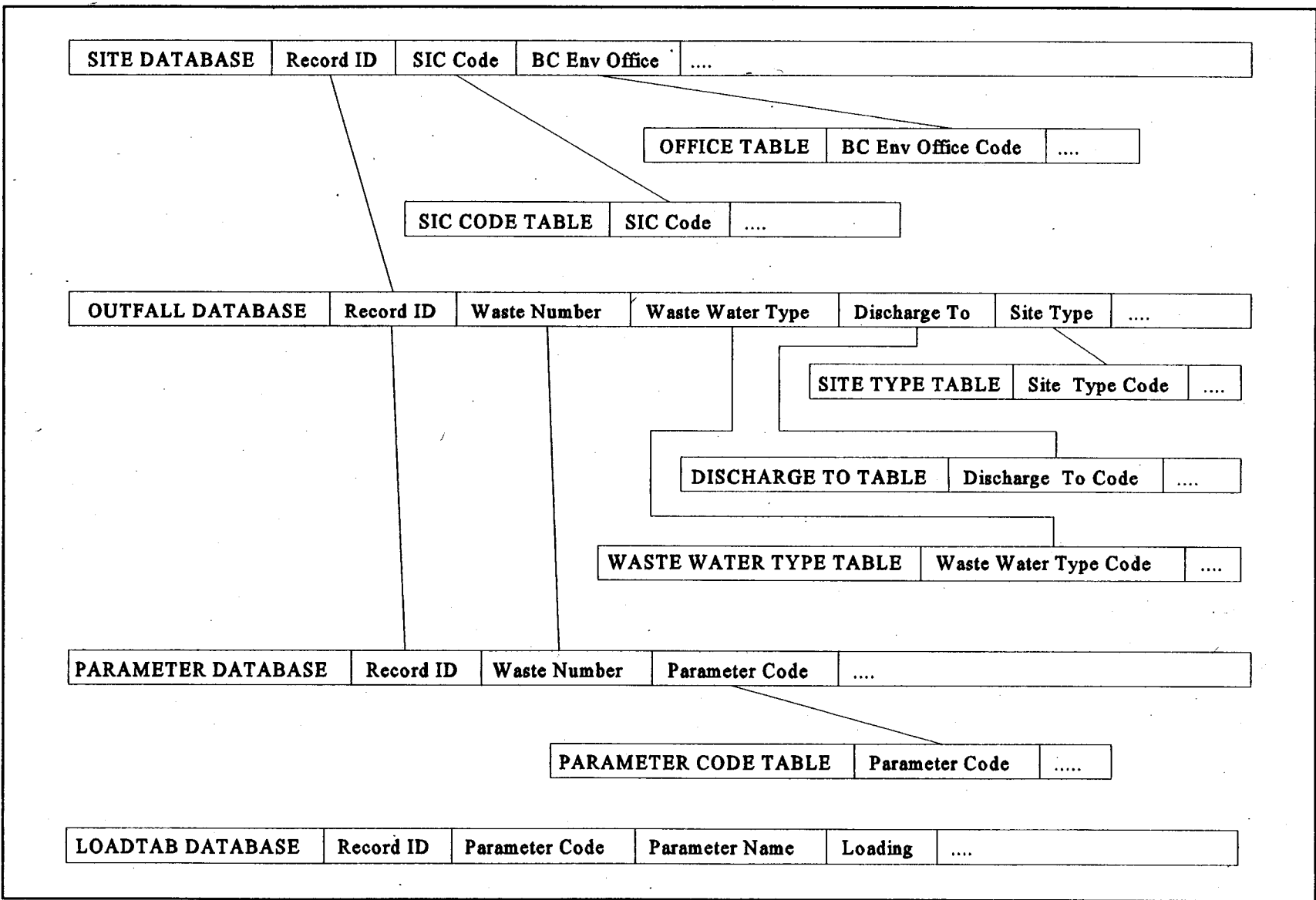
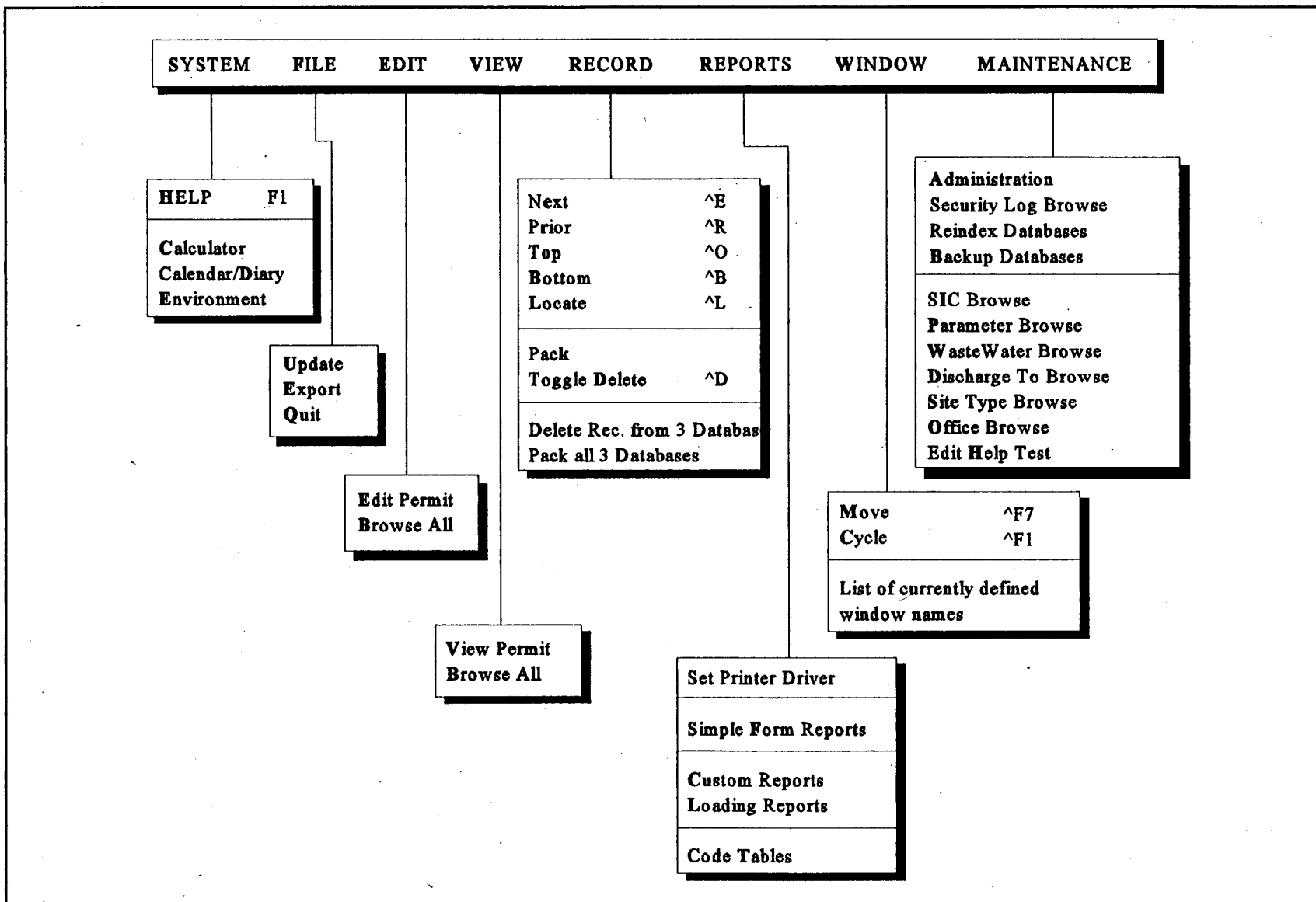


Figure 2 Menu Hierarchy



4.8 Viewing Data (View Submenu)

The view submenu allows the user to view each of the individual database files. The system displays these files on a screen form. There are two main screen forms, a site information screen and an outfall information screen. Along with these two screen forms is a control window, which is on the right side of the screen. It contains push buttons that when selected control the position of the record pointer (i.e. the record pointer points to the active record in the table - only one record in a table can be active at any one time).

Browse windows are available in some of the database forms. These windows can be activated or deactivated by clicking on the relevant push button (e.g. The push button **<Next Page>**, located in the controls section of the form screens, activates the outfall information screen along with it's associated parameters. Note that the parameter information takes the form of a browse window).

4.8.1 Navigating Through the Database

The user interface of the form screens has been modeled after an actual permit form. What this means is that when viewing the site information, this is known as page one of the current permit and all subsequent pages would reveal the outfall and parameter information that is associated with the current site. The control window on the right hand side of the screen controls the record pointer in the database. For example, clicking on the **< Next >** push button moves the record pointer to the next permit (site) in the database, while clicking on the **<Next Page>** push button when in the site information screen brings up that particular site's outfall and parameter information. Note: A permit consists of a site that may have one or more outfalls, and each outfall may have zero or more parameters.

The **<Locate>** push button on the control window allows the user to jump quickly to a record in the database. To activate the **<Locate>** function, the user must define an expression in the window that opens such as Record ID >= "P00100" or Sub-basin = "Lower Fraser". Note that this search function is case sensitive. The user must then click on the **<Add>** push button and then the **<Search/Browse>** push button to see the records that match the selection criteria. The user can then click on a record in the Browse window and then click on the window close icon in the upper left hand corner of the Browse window followed by clicking on the **<Exit>** push button in order to view the record.

The **<Q-Find>** allows the user to skip to a record by specifying the Record ID or a string within the manager field (i.e. Typing *Bloedel* will find the next record of Macmillan Bloedel. Note that the system searches forward through the database to allow successive records to be found with the same string. Press the **<Top>** push button before **<Q-Find>** if finding the first record with a particular string is desired; otherwise, only records with a higher index number in the database will be located.

4.8.2 Exiting from the Screen Form

The screen form must be exited by selecting the < **EXIT** > push button on the control window (i.e. the menu on the right side of the editing and viewing screens).

4.8.3 Site Data Screen

Each record in the database must have an entry in the Record ID field, since this is the unique identifier for each site. For all sites other than federal facilities, the Record ID is a 6 character string, beginning with a P and ending with the numeric portion of the Waste Management Permit number. For example, Scott Paper Limited has a Permit No. PE-335. Therefore, the Record ID for Scott Paper is P00335.

For federal facilities, the Federal Facility number (obtained from FFEAD) is entered in the Record ID field and in the Federal Facility field. Some federal facilities may also have a B.C. WASTE Management permit. In this case, the provincial permit number is used in the Record ID field and the federal facility number is in the Federal Facility number field. This makes it possible to search for all federal facilities using the Federal Facility field and the < **Locate** > push button.

Pressing the F2 key while the cursor is in the *sic code* field activates a lookup table. Entries can be selected from this lookup table by pressing **Enter**. The user can also edit the lookup search string displayed at the top of the lookup window. The user should note that the system will search by SIC name only. Press **ESC** to abort selection of a lookup value.

The *SIC code*, and *BC environment office* fields are linked to code tables which lookup the appropriate code name for each relevant code number. See Appendix D Table 3 for the B.C. MELP office codes and descriptions, and see Table 4 for the Standard Industry Category codes and descriptions.

4.8.4 Outfall Data Screen

The combination of Record ID and waste number is unique for each outfall. A single site may have multiple outfalls.

The *discharge to*, *wastewater type*, and *site type* fields are linked to code tables which lookup the appropriate code name for each relevant code number. See Appendix D Table 5 for the B.C. MELP discharge to codes and descriptions, see Table 6 for the B.C. MELP waste type codes and descriptions, and see Table 7 for the B.C. MELP site type codes and descriptions.

4.8.5 Parameter Data Screen

The combination of Record ID, waste number, and parameter code is unique for each parameter. A single outfall may have multiple parameters. The *parameter code* field is linked to a code table which looks up the appropriate code name for each relevant code number. See Appendix D Table 8 for the parameter codes, descriptions, units, and upper limits.

The parameter data screen contains parameter limits information about each discharge. Pressing the **F2** key while the cursor is in the *parameter code* or *parameter name* field activates a lookup table. Entries can be selected from this lookup table by pressing **Enter**. The user can also edit the lookup search string displayed at the top of the lookup window. The user should note that the system will search by both parameter code and parameter name. Press **ESC** to abort selection of a lookup value.

Each parameter in the parameter lookup table is associated with a *units* field. The units field contains a string defining the units assigned to each parameter in the parameter table. The unit type is defaulted for any new parameter entered.

4.8.6 Changes to the Data

The user is not permitted to save changes to the database from within the View submenu. Although the View submenu functions similar to the Edit submenu, **changes to the database fields cannot be saved**. The **<Save>** push button is never active.

4.9 Editing Data (Edit Submenu)

This section provides instructions on how to add, edit, and delete records. For help on browsing and navigating through the database, see Section 4.8.

The edit submenu allows the user to edit each of the individual database files. The system displays these files on a screen form. When a record is initially displayed, the **<Save>** and **<Cancel>** push buttons are disabled. If the user makes a change to a field in the database, these push buttons are enabled and the control window is disabled. After the user has changed all the fields he/she wants to change, then he/she must explicitly save these changes or discard these changes.

Warning: while in the edit submenu, any changes made to the parameter data is saved automatically; hence, caution is advised when editing this data because you will be unable to cancel the changes made.

4.9.1 New Records

New records can be added to the database by clicking on the <New> push button at the bottom of the control window. Clicking on this push button will cause the <Save> and <Cancel> push buttons to be enabled. If the <New> push button is disabled (light blue letters) then you may be in viewing mode and not editing mode. The system may be waiting for you to cancel or save the existing record that is displayed onscreen before it will let you add a new record.

Clicking on the <New> push button will produce different results depending on which screen is currently being edited. When the site information screen is edited, the system creates a new site and a blank outfall, when the outfall information screen is edited the system creates a new outfall, and when the parameter browse window is edited a new parameter is created.

Each new record in the database must have an entry in the Record ID field, since this is the unique identifier for each site. For all sites other than federal facilities, the Record ID is a 6 character string, beginning with a P and ending with the numeric portion of the Waste Management Permit number. For example, Scott Paper Limited has a Permit No. PE-335. Therefore, the Record ID for Scott Paper is P00335.

For federal facilities, the Federal Facility number (obtained from FFEAD) is entered in the Record ID field and in the Federal Facility field. If the federal facility also has a B.C. WASTE Management permit, enter the provincial permit number in the Record ID field and the federal facility number is in the Federal Facility number field.

4.9.2 Editing Existing Records

The system monitors any changes you make to the system. If you make a change to any one of the fields, the system will ask you to confirm changes and will disable the record control window and some of the push buttons on the screen. At this point you can continue making changes to the field, however, you must eventually save or discard these changes before exiting the screen.

4.9.3 Deleting Records

The process of deleting records involves flagging a record for deletion and then recovering the space in the file by packing the table. The deletion process is done in this way because packing the table can be a very time-consuming process for large databases. It is more time efficient to mark for deletion all the records that you want to delete and then recover the file space by clicking on the Pack menu item in the Record submenu.

To mark a record for deletion, display the record in the window and then press **Ctrl-D**. Records can also be deleted by using the Record submenu. Pressing **Ctrl-D** a second time recovers the deleted record. Note that if a user wishes to delete all the data for a Record ID, he/she must delete records in all three databases. To simplify the process, there are functions at the bottom of the Record submenu that allow the user to delete a permit from all three tables or pack all three tables.

4.10 Reporting (Reports Submenu)

The reports are grouped according to their functionality and according to the complexity of the report.

4.10.1 Setting Printer Driver

The user can choose from several pre-defined printers such as Postscript, Laserjet II, and Laserjet III in the reporting dialogue screen that is activated after a user chooses a report type from the Reports submenu. The user can also modify the list of printer drivers (and set a default driver) by choosing the Modify Printer Driver option from the top of the Reports submenu. From this dialogue window, the user can specify a new printer driver by choosing the <New> push button.

4.10.2 Simple Form Reporting

Four types of reports may be produced depending on which database the user chooses as a base. They are *Site*, *Outfall*, *Parameter*, and *All*. Note: the selection *All* refers to a report that contains information from all three databases. After selecting the desired database the user now must decide which records they want included in their report.

4.10.2.1 Selecting Records

For simple reports, three options are available: a specific Record ID, all records in the currently selected database, or an advanced record selection. Note: for a specific Record ID the number must exactly match the number in the database - i.e. don't forget about leading 0's.

4.10.2.2 Advanced Record Selection (Filters)

Filters provide the user with the ability to retrieve information above and beyond the standard reporting features of the system. A filter specifies a condition that records in the current table/database must meet to be accessible. Through an easy, step by step process the user is able to build and execute complex queries. From a set of predetermined fields derived from

the current database, the user simply points and clicks the mouse on the desired fields to generate the required information.

For example, if the current database was *Site* you would have the option to query on Region, Sub-basin, Industry code, Industry name, BC environment office, and Manager. After selecting one of the aforementioned fields, the comparison operator defaults to an equals, which can be changed. Note: for string comparisons a double equals "=" represents an exact match, while a single equals "=" represents a partial string match.

4.10.3 Custom Reporting

Provides client with the flexibility of designing their own tabular reports. Users can specify the contents of the reports by selecting a database and then the desired fields. The user determines the order of the columns on the report by the sequence in which they select or de-select the fields.

See section 4.10.2.2 for detailed description of how to use the filter conditions. Note: when a filter is selected through custom reporting, it appears as a header to all pages of the report.

4.10.4 Loading Calculations

A note of caution concerning the loading calculation and reports require emphasis. The loading calculation module was developed to assist the planning process, and to facilitate gross comparisons between regions or industrial sectors. FR_PSI does not include actual monitoring data. In practice, flows and concentrations are probably lower than Permit levels used in the loading calculation. Loading values reported by the database should not be considered as a quantitative measure of actual pollutant loadings in the Basin, nor as a substitute for wastewater monitoring or characterization studies. The database loadings are to be used only to give a ball-park idea of the total authorized loadings of permitted parameters. Such extrapolations have no meaning outside the planning context.

The following formulas are used for the loading calculations:

$$\text{Allowable Daily Loading} = (\text{Maximum Concentration Limit}) * (\text{Maximum Flow Rate})$$

$$\text{Allowable Annual Loading} = (\text{Allowable Daily Loading}) * (\# \text{ Days of Discharge per Year})$$

4.11 Maintenance Submenu

The maintenance submenu allows the user to browse the system code tables for parameter names, site types, etc. Press ESC or click on the upper left hand corner of the browse window to close the window.

The system administrator can also maintain the code tables using the Browse submenu that is activated when an option is selected from the Maintenance submenu. Memo fields are edited by double-clicking on the word "Memo" in the browse view. Records can also be deleted and added from the Browse submenu.

The list of users can be maintained using the Administration submenu option. Click on the relevant push button to scroll through the list of users. Passwords can only be changed by entering in the old password first. New users are given a password of blank (i.e. just a carriage return) which must be changed by the system administrator.

4.12 Exiting the System

The system can be exited by choosing the Quit option from the File submenu.

5.0 Maintaining the Database

5.1 Updates to the System

Updates to the database should be controlled by one person. This is the only way to ensure that editing is done on a thorough and consistent basis.

5.2 Backing Up the System

This must be done on a regular basis in case the database is corrupted. The seven main files to backup are: SITE.DBF, SITE.CDX, SITE.FPT, OUTFALL.DBF, OUTFALL.CDX, PARAM.DBF, and PARAM.CDX. A paper transaction log must be used to record all changes to the database that are made between system backups.

From the main menu select Maintenance, then Backup Databases. This will *pk-zip* the aforementioned databases to a file located in the fraser directory named Backup.zip. It is recommended that you copy this file to diskette. Note: when you do another backup it will overwrite the old backup.zip file with the new backup.zip file.

5.3 User ID and Password Maintenance

User ID's are maintained by choosing the system administration security access level. The three security levels recognized by the system are 9 (high-level access), 7 (editing is permitted but not password maintenance), and 5 (no-editing allowed).

6.0 System Limitations

The accuracy of the reports in the system is only as good as the accuracy of the data that the reports are derived from. Please read section 4.10.3 carefully concerning the interpretation of loading calculations.

7.0 Summary and Recommendations

The Fraser River PSI database permits sophisticated reporting concerning parameter loadings in the Fraser Basin. Users have the ability to produce reports from the FR_PSI reports menu or to produce customized tabular reports. The following is a list of recommendations for improving the usefulness and validity of the FR_PSI database:

- *Consistency with Other Databases.* Procedures need to be developed to ensure that the FR_PSI database is regularly updated with data from the WASTE system.
- *Consistency with Wastewater Discharge Permits.* Each permit in the FR_PSI database needs to be fully validated against the actual paper permit. This should ideally be done by the person(s) who is responsible for the permits in each sub-basin of the Fraser River Basin because he/she will be most familiar with the permits and will be quickly able to identify database entries that are incorrect.
- *Version Control and User Registration.* A list of users of the system should be maintained and these users should be given regular updates to the system. These updates should be dated and given a number to facilitate version control.
- *Sophisticated Reporting for Integrity Checking.* Reports should be created that allow for sophisticated intra-record checking of data. These reports should be designed to highlight extraneous data values. They should be designed in conjunction with an expert in the field of permit allowance administration.
- *Standardization of Permits.* The permit wording and layout should be standardized to make it easier to validate the permit data in a database against the paper permit. Parameter discharge limits should be specified in standardized units. Exact locations of each outfall should be specified on the permits.

- *Regular Backups of Data.* Regular backups of data should be done as well as recording of all edits in a paper transaction log. Strict adherence to these procedures will ensure that no data is lost in the event of a major system crash.
- *Checking with Monitoring Data.* Data from FR_PSI system should be cross-referenced to monitoring data periodically to aid in highlighting data input errors and other discharge inconsistencies.
- *Conversion to FOXPRO Windows Version.* The system should be converted to run under Windows 3.1. Many users are familiar with Windows and they will be able to learn the system more easily than the current DOS version.

Appendix A

Screen Snapshots

Note: These screen snapshots reflect the current screens of the system at the time of printing.

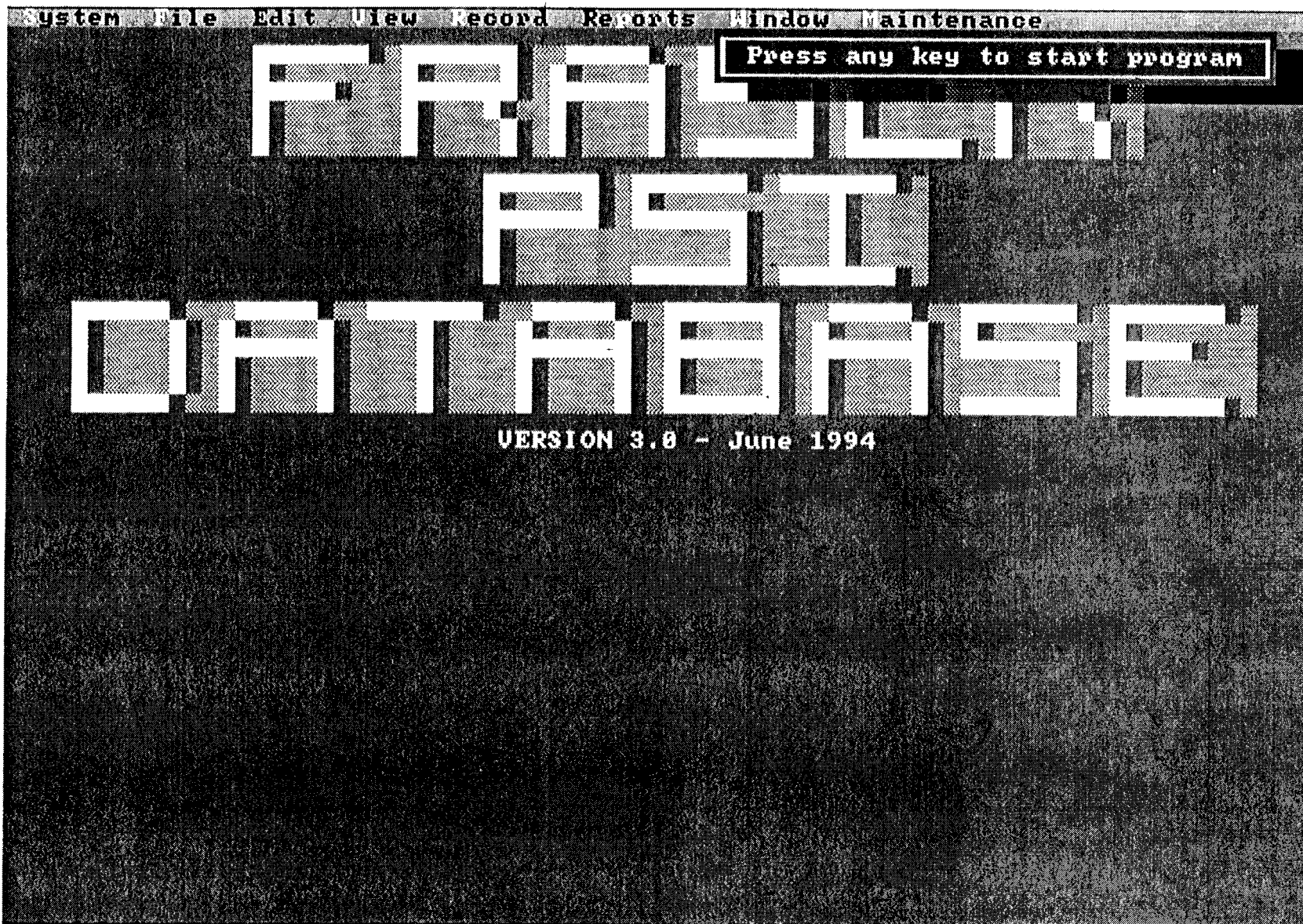


Figure 1 Opening screen of the Fraser PSI program.

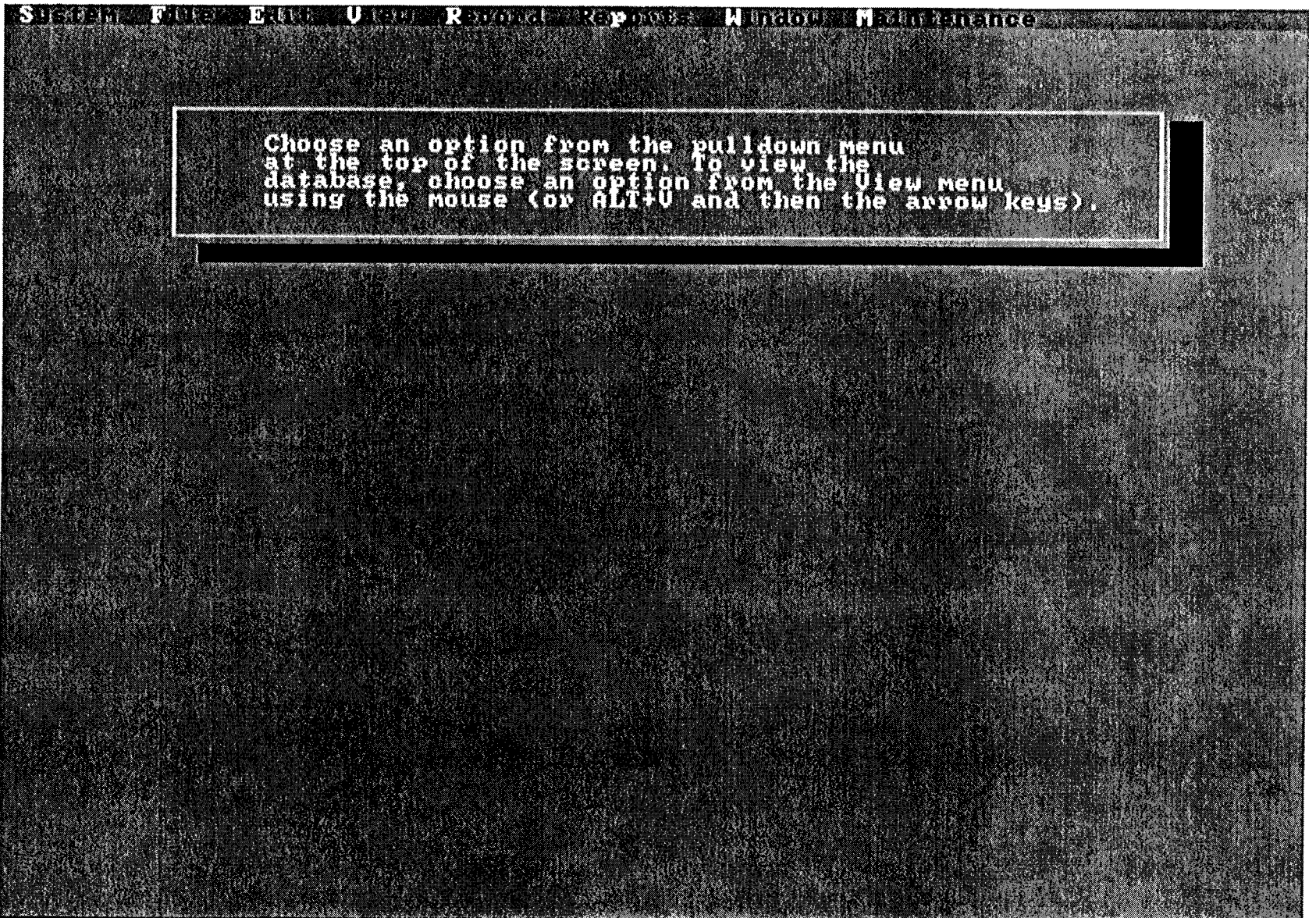


Figure 2 Main screen of the Fraser PSI program.

Figure 3 Selecting an option from the pulldown menu system.

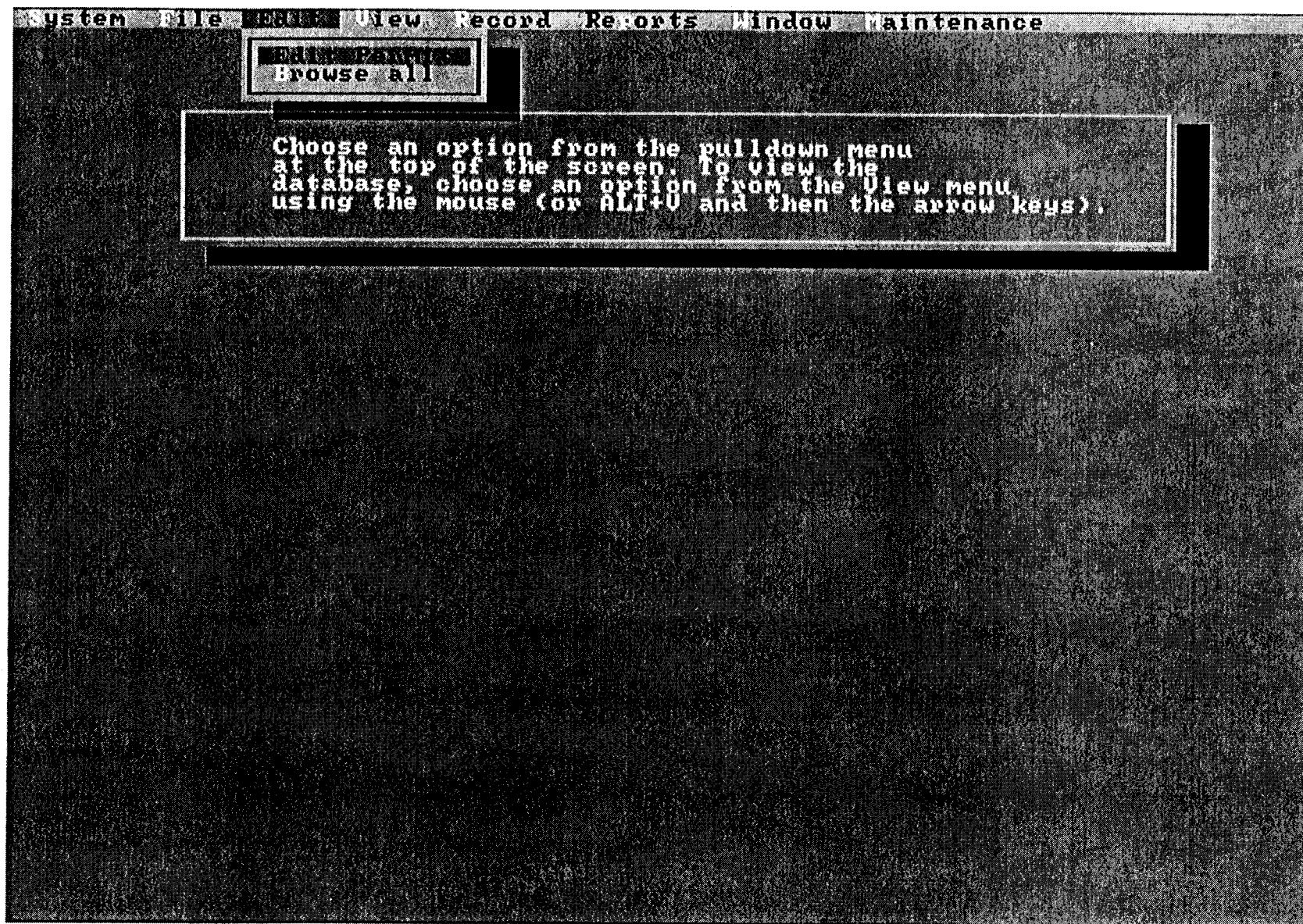


Figure 4 The site information screen.

System File Edit View Record Reports Window Maintenance		
Site Information		
Record ID :	P00012	File Number: [REDACTED]
Fed. Fac. # :	[REDACTED]	
BC Env. Office: 20 Lower Mainland, Surrey		
Basin:	Region:	Sub-basin:
Fraser	Lower Region	Lower Fraser
Manager : PAPERBOARD INDUSTRIES CORPORATION Facility: PAPERBOARD MILL AT FOOT OF WIGGINS ST, BURNABY Contact : Mr Samuel Jones Phone : (604)737-3874 FAX: (604)737-7186 Mail Add: 4800 - 213 W. HASTINGS ST, VANCOUVER, BC V3C 4L8 Leg Desc: LOT 24 OF LOT 253, GP 9 NEW WESTMINSTER DISTRICT,		
SIC Code : 2713 PaperBoard Industry Prod. Cap.: 290 TONNES/DAY		
UTM Zone: [REDACTED]		NTS # : 92G2
Easting : [REDACTED]		Latitude : 49 11 SS
Northing: [REDACTED]		Longitude: 122 58 [REDACTED]
[1 Federal Instruments Date of Last Inspect.: 06/29/84		
THE SUM CONCENTRATION OF TRI, TETRA, & PENTACHLOROPHENOLS SHALL BE 10 UG/L OR LESS.		
Shift-Tab To Exit Memo		
Last Updated by: Mogee / Jack		Date : 06/07/94
1 Outfalls		
F2 : Look-Up for SIC Code and SIC Name		

< Help >

 CURRENT PERMIT
 < Page 1 >
 <Next Page >
 <Prev. Page>

 SELECT PERMIT
 < Next >
 < Prior >
 < Top >
 < Bottom >
 < Q-Find >
 < Locate >

 < Save >
 < Cancel >

 < New >
 <Delete/Und>

 << Exit >>

Figure 5 Outfall information screen with parameter browse table.

System File Edit View Record Reports Window Maintenance					
Record ID : P00017		OUTFALL #: 01 of 1			
Site Type : 19 Outfall Was. Wt. Typ: 1 Process Treatment : PACKAGE STP, CLARIFIER, ASB					
Maximum Flow:		11,400.0000		Flow Units	
Average Flow:				M3/D	
Duration :		days/year			
Discharge To: 1 Surface Water (Riv/Lk/E) Rec. Wat. Body: FRASER RIVER, NORTH ARM					
Last Updated by: McGee / Jack				Date: 09/16/93	
Record ID: P00017		Waste #: 01		--> 9 Parameters	
Record ID	Waste	Record ID	Waste #	Param. Code	Parameter Nam
P00017	01	P00017	01	0004	pH
P00017	01	P00017	01	0115	Biochemical Ox
P00017	01	P00017	01	0013	Temperature
P00017	01	P00017	01	0014	Oxygen Dissolv
P00017	01	P00017	01	0008	Residue Nonfil
P00017	01	P00017	01	0461	Bio. LC50:Rain
P00017	01	P00017	01	T021	Trichloropheno
P00017	01	P00017	01	T020	Tetrachlorophe
P00017	01	P00017	01	P022	Pentachlorophe
F2 ; Look-up Partable Ctrl+Tab ; Exit Parameter Window Ctrl+N ; Add a Parameter Ctrl+T ; Delete/Und. a Parameter					

< Help >

 CURRENT PERMIT
 < Page 1 >
 < Next Page >
 < Prev. Page >

 SELECT PERMIT
 < Next >
 < Prior >
 < Top >
 < Bottom >
 < Q-Find >
 < Locate >

 < Save >
 < Cancel >

 < New >
 < Delete/Und >

 << Exit >>

Figure 6 Producing a report.

System File Edit View Record Reports Window Maintenance

Simple Form Reports

<p>Select Database</p> <p>(+) SITE () OUTFALL () PARAMETER () ALL</p> <p>458 Records Selected</p>	<p>Record Selection</p> <p>[X] All [] Specific [] Advanced</p>
<p>Output Device</p> <p>(+) Preview () To File () To Printer</p>	<p>Printer Name</p> <p>Generic type</p>

< Help > << Ok >> < Cancel >

Figure 7 Setting a filter condition on the database.

System File Edit View Record Reports Window Maintenance

Advanced Record Selection For SITE Database

Field Selection	Expression Builder	
<input type="checkbox"/> Region	<input type="checkbox"/>	<input type="text"/>
<input type="checkbox"/> Sub-Basin	<input type="checkbox"/>	<input type="text"/>
<input checked="" type="checkbox"/> Industry Code	<input type="checkbox"/> =	<input type="text" value="25"/>
<input type="checkbox"/> Industry Name	<input type="checkbox"/>	<input type="text"/>
<input type="checkbox"/> BC Env Office	<input type="checkbox"/>	<input type="text"/>
<input type="checkbox"/> Manager	<input type="checkbox"/>	<input type="text"/>

<Clear All>

<< Ok >>

< Cancel >

Page 12 How a table lookup on Industry Code

Appendix B

System Structure

Structure for database : DISCLIST.DBF

Number of data records : 5

Last updated : 11/17/93 at 13:39

Field	Field name	Type	Width	Dec
1	DISC_TO	Character	1	
2	DISCDESC	Character	25	
** Total **			27	

Structure for database : LOADTAB.DBF

Number of data records : 1205

Last updated : 04/28/94 at 15:20

Field	Field name	Type	Width	Dec
1	PARAM_CODE	Character	4	
2	RECORD_ID	Character	6	
3	WASTE_NUM	Character	2	
4	DISCH_MAX	Numeric	13	4
5	FLOW_MAX	Numeric	13	4
6	FLOW_AVG	Numeric	13	4
7	UNITS_TYPE	Character	9	
8	UNITS	Character	9	
9	SUB_BASIN	Character	20	
10	REGION	Character	20	
11	SIC_CODE	Character	5	
12	BC_ENV_OFF	Character	2	
13	LATITUDE	Numeric	5	2
14	LONGITUDE	Numeric	6	2
15	DISCH_TO	Character	2	
16	DISCH_DUR	Numeric	3	
17	FACILITY	Character	50	
18	MANAGER	Character	50	
19	DAI_LOAD	Numeric	13	2
20	D_LD_UNITS	Character	10	
21	ANN_LOAD	Numeric	13	
22	A_LD_UNITS	Character	10	
** Total **			279	

Structure for database : OFFICE.DBF

Number of data records : 8

Last updated : 05/17/93 at 9:20

Field	Field name	Type	Width	Dec
1	BC_ENV_OFF	Character	2	
2	OFFICE_NAM	Character	35	
** Total **			38	

Structure for database : OUTFALL.DBF

Number of data records : 594

Last updated : 04/28/94 at 15:14

Field	Field name	Type	Width	Dec
1	RECORD_ID	Character	6	
2	WASTE_NUM	Character	2	
3	SITE_TYPE	Character	2	
4	TREATMENT	Character	60	
5	WASTE_TYPE	Character	1	
6	FLOW_MAX	Numeric	13	1
7	FLOW_AVG	Numeric	13	1
8	UNITS	Character	8	
9	DISCH_DUR	Numeric	3	
10	DISCH_TO	Character	1	
11	REC_WAT_BD	Character	25	
12	UPDATE_PER	Character	25	
13	UPDATE_DAT	Date	8	
** Total **			168	

Structure for database : PARAM.DBF

Number of data records : 1209

Last updated : 04/28/94 at 15:14

Field	Field name	Type	Width	Dec
1	RECORD_ID	Character	6	
2	WASTE_NUM	Character	2	
3	PARAM_CODE	Character	4	
4	UNITS_TYPE	Character	9	
5	DISCH_MIN	Numeric	13	1
6	DISCH_MAX	Numeric	13	1
7	DISCH_AVG	Numeric	13	1
8	UPDATE_PER	Character	25	
9	UPDATE_DAT	Date	8	
** Total **			94	

Structure for database : PARTABLE.DBF

Number of data records : 562

Last updated : 02/14/94 at 13:48

Field	Field name	Type	Width	Dec
1	PAR_COD	Character	4	
2	PAR_NAME	Character	25	
3	UNITS	Character	9	
4	UPLIMIT	Numeric	15	
** Total **			54	

Structure for database : SICLIST.DBF

Number of data records : 1247

Last updated : 02/16/94 at 13:26

Field	Field name	Type	Width	Dec
1	SIC_COD	Character	5	
2	INDUSCAT	Character	100	
** Total **			106	

Structure for database : SITE.DBF

Number of data records : 459

Last updated : 04/28/94 at 15:14

Field	Field name	Type	Width	Dec
1	RECORD_ID	Character	6	
2	FED_FAC	Character	6	
3	PERMIT_TYP	Character	8	
4	MANAGER	Character	50	
5	BASIN	Character	20	
6	REGION	Character	25	
7	SUB_BASIN	Character	20	
8	SIC_CODE	Character	5	
9	PROD_CAPAC	Numeric	8	
10	UNITS	Character	15	
11	MAIL_ADDR	Character	150	
12	FACILITY	Character	50	
13	PHONE_NUM	Character	10	
14	FAX_NUMBER	Character	10	
15	CONTACT	Character	20	
16	LEG_DESCR	Character	150	
17	NTS_NUM	Character	6	
18	UTM_ZONE	Numeric	4	
19	EASTING	Numeric	10	
20	NORTHING	Numeric	10	
21	LATITUDE	Numeric	10	6
22	LONGITUDE	Numeric	10	6
23	BC_ENV_OFF	Character	2	
24	INSP_DATE	Date	8	
25	COMMENT	Memo	10	
26	UPDATE_PER	Character	25	
27	UPDATE_DAT	Date	8	
28	CB	Logical	1	
29	OCEAN	Logical	1	
30	PCB_W	Logical	1	
31	SECLEAD	Logical	1	
32	DF_D	Logical	1	
33	DF_E	Logical	1	
34	FISHACT	Logical	1	
35	EEM	Logical	1	
36	MEAT	Logical	1	

37	MINING_G	Logical	1
38	MINING_R	Logical	1
39	PP	Logical	1
40	PETROL_G	Logical	1
41	PETROL_R	Logical	1
42	POTATO	Logical	1
43	ACA	Logical	1
44	CCA	Logical	1
45	CP	Logical	1
46	CREOSOTE	Logical	1
47	MARINA	Logical	1
48	PCP_T	Logical	1
49	PCP_W	Logical	1
50	FREGS	Logical	1
51	FILE_NUMB	Character	16
** Total **			696

Structure for database : SITETYPE.DBF

Number of data records : 22
Last updated : 12/14/93 at 9:41

Field	Field name	Type	Width	Dec
1	SIT_TYP	Character	2	
2	SIT_DESC	Character	25	
** Total **			28	

Structure for database : WASLIST.DBF

Number of data records : 5
Last updated : 12/15/93 at 14:02

Field	Field name	Type	Width	Dec
1	WAS_TYP	Character	1	
2	WASDESC	Character	25	
** Total **			27	

Appendix C

Coding Source

Table 1. Origin of data and codes.

Variable Name	Source		
	FR PSI	WASTE	FFEAD
Record Id	X	X	X
Manager		X	X
Facility		X	X
Sub-basin	X		
Region	X		
SIC Code		X	X
Production Capacity		X	
Production Units	X	X	
Mailing Address		X	X
Location	X	X	X
Phone Number		X	X
Fax Number		X	X
Contact Name		X	X
Legal Address		X	X
NTS Mapsheet	X		
UTM Zone	X		
UTM Easting	X	X	
UTM Northing	X	X	
Latitude	X	X	X
Longitude	X	X	X
MELP Office		X	
Federal Facility Number	X		X
Federal Regulations	X		

Variable Name	Source		
	FR PSI	WASTE	FFEAD
Permit Date		X	
Date of Last Update	X		
WASTE Number		X	
Site Type		X	
Waste Type		X	
Flow Maximum		X	
Flow Minimum		X	
Flow Average		X	
Flow Units	X	X	
Discharge Duration	X		
Discharge To	X	X	
Receiving Waterbody	X	X	
Parameter Code	X	X	
Parameter Units	X	X	
Discharge Minimum		X	
Discharge Maximum		X	
Discharge Average		X	

Appendix D

Lookup Tables

Table 1. Sub-basin watershed codes and descriptions.

Sub-basin Table	
CODE	DESCRIPTION
1	Lower Fraser
2	Lillooet
3	Bridge-Seton
4	Thompson
5	South Thompson
6	North Thompson
7	Middle Fraser
8	Chilcotin
9	Quesnel
10	West Road
11	Upper Fraser
12	Nechako
13	Stuart

Table 2. Region codes, descriptions, and the associated sub-basin.

Region Table		
CODE	DESCRIPTION	SUB-BASINS
1	Lower	1,2
2	Thompson	4,5,6
3	Middle	3,7,8,9,10
4	Upper	11,12,13

Table 3. B.C. MELP office codes and descriptions.

BC Environment Office Table	
CODE	LOCATION
10	Vancouver Island, Nanaimo
20	Lower Mainland, Surrey
30	Southern Interior, Kamloops
40	Kootenay, Nelson
50	Northern Interior, Williams Lake
60	Skeena, Smithers
70	Northern Interior, Prince George
80	Southern Interior, Penticton

Table 4. Site industry codes and descriptions.

SIC Table

CODE DESCRIPTION

01	Agricultural Industries
011	Livestock farms
0111	Dairy Farms
0112	Cattle Farms
0113	Hog Farms
0114	Poultry and Egg Farms
0115	Sheep and Goat Farms
0119	Livestock Combination Farms
012	Other Animal Specialty Farms
0121	Honey and Other Apiary Product Farms
0122	Horse and Other Equine Farms
0123	Furs and Skins, Ranch
0129	Other Animal Specialty Farms n.e.c
013	Field Crop Farms
0131	Wheat Farms
0132	Small-Grain Farms (Except Wheat)
0133	Oilseed Farms (Except Corn)
0134	Grain Corn Farms
0135	Forage, Seed and Hay Farms
0136	Dry Field Pea and Bean Farms
0137	Tobacco Farms
0138	Potato Farms
0139	Other Field Crop Farms
014	Field Crop Combination Farms
0141	Field Crop Combination Farms
015	Fruit and other Vegetable Farms
0151	Fruit Farms
0152	Other Vegetable Farms
0159	Fruit and Vegetable Combination Farms
016	Horticultural Specialties
0161	Mushrooms
0162	Green House Products
0163	Nursery Products
0169	Other Horticultural Specialties
017	Livestock, Field Crop and Horticultural Combination Farms
0171	Livestock, Field Crop and Horticultural Combination Farms

- 02 Service industries Incidental to Agriculture**
 - 021 Services Incidental to Livestock and Animal Specialties
 - 0211 Veterinary Services
 - 0212 Farm Animal Breeding Services (Except Poultry)
 - 0213 Poultry Services
 - 0219 Other Services Incidental to Livestock and Animal Specialties
 - 022 Services Incidental to Agricultural Crops
 - 0221 Soil Preparation, Planting and Cultivating Services
 - 0222 Crop Dusting and Spraying Services
 - 0223 Harvesting, Baling and Threshing Services
 - 0229 Other Services Incidental to Agricultural Crops
 - 023 Other Services Incidental to Agriculture
 - 0231 Agricultural Management and Consulting Services
 - 0239 Other Services Incidental to Agriculture n.e.c.
- 03 Fishing and Trapping Industries**
 - 031 Fishing Industries
 - 0311 Salt Water Fishing Industry
 - 0312 Inland Fishing industry
 - 032 Services Incidental to Fishing
 - 0321 Services Incidental to Fishing
 - 033 Trapping
 - 0331 Furs and Skins, Wild
 - 0339 Other Trapping
- 04 Logging Industry**
 - 041 Logging Industry
 - 0411 Logging Industry
- 05 Forestry Services Industry**
 - 051 Forestry Services Industry
 - 0511 Forestry Services Industry
- 06 Mining Industries**
 - 061 Metal Mines
 - 0611 Gold Mines
 - 0612 Copper and Copper-Zinc Mines
 - 0613 Nickel-Copper Mines
 - 0614 Silver-Lead-Zinc Mines
 - 0615 Molybdenum Mines
 - 0616 Uranium Mines
 - 0617 Iron Mines
 - 0619 Other Metal Mines
 - 062 Non-Metal Mines (Except Coal)
 - 0621 Asbestos Mines
 - 0622 Peat Industry

- 0623 Gypsum Mines
- 0624 Potash Mines
- 0625 Salt Mines
- 0629 Other Non-Metal Mines (Except Coal)
- 063 Coal Mines
- 0631 Bituminous Coal Mines
- 0632 Subbituminous Coal Mines
- 0633 Lignite Mines
- 07 Crude Petroleum and Natural Gas Industries**
- 071 Crude Petroleum and Natural Gas Industries
- 0711 Conventional Crude Oil and Natural Gas Industry
- 0712 Non-Conventional Crude Oil Industry
- 08 Quarry and Sand Pit Industries**
- 081 Stone Quarries
- 0811 Granite Quarries
- 0812 Limestone Quarries
- 0813 Marble Quarries
- 0814 Sandstone Quarries
- 0815 Shale Quarries
- 082 Sand and Gravel Pits
- 0821 Sand and Gravel Pits
- 09 Service Industries Incidental to Mineral Extraction**
- 091 Service Industries Incidental to Crude Petroleum and Natural Gas
- 0911 Contract Drilling, Oil and gas Industry
- 0919 Other Service Industries Incidental to Crude Petroleum and Natural Gas
- 092 Service Industries Incidental to Mining
- 0921 Contract Drilling Industry (Except Oil and Gas)
- 0929 Other Service Industries Incidental to Mining
- 10 Food Industries**
- 101 Meat and Poultry Products Industries
- 1011 Meat and Meat Products Industry (Except Poultry)
- 1012 Poultry Products Industry
- 102 Fish Products Industry
- 1021 Fish Products Industry
- 103 Fruit and Vegetable Industries
- 1031 Canned and Preserved Fruit and Vegetable Industry
- 1032 Frozen Fruit and Vegetable Industry
- 104 Dairy Products Industries
- 1041 Fluid Milk Industry
- 1049 Other Dairy Products Industries
- 105 Flour, Prepared Cereal Food and Feed Industries
- 1051 Cereal Grain Flour Industry

- 1052 Prepared Flour Mixes and Prepared Cereal Foods Industry
- 1053 Feed Industry
- 106 Vegetable Oil Mills (Except Corn Oil)
- 1061 Vegetable Oil Mills (Except Corn Oil)
- 107 Bakery Products Industries
- 1071 Biscuit Industry
- 1072 Bread and Other Bakery Products Industry
- 108 Sugar and Sugar Confectionery Industries
- 1081 Cane and Beet Sugar Industry
- 1082 Chewing Gum Industry
- 1083 Sugar and Chocolate Confectionery Industry
- 109 Other Food Products Industries
- 1091 Tea and Coffee Industry
- 1092 Dry Pasta Products Industry
- 1093 Potato Chip, Pretzel and Popcorn Industry
- 1094 Malt and Malt Flour Industry
- 1099 Other Food Products Industries n.e.c.
- 11 Beverage Industries**
- 111 Soft Drink Industry
- 1111 Soft Drink Industry
- 112 Distillery Products Industry
- 1121 Distillery Products Industry
- 113 Brewery Products Industry
- 1131 Brewery Products Industry
- 114 Wine Industry
- 1141 Wine Industry
- 12 Tobacco Products**
- 121 Leaf Tobacco Industry
- 1211 Leaf Tobacco Industry
- 122 Tobacco Products Industry
- 1221 Tobacco Products Industry
- 15 Rubber Products Industries**
- 151 Tire and Tube Industry
- 1511 Tire and Tube Industry
- 152 Rubber Hose and Belting Industry
- 1521 Rubber Hose and Belting Industry
- 159 Other Rubber Products Industries
- 1599 Other Rubber Products Industries
- 16 Plastic Products Industries**
- 151 Foamed and Expanded Plastic Products Industry
- 1611 Foamed and Expanded Plastic Products Industry
- 162 Plastic Pipe and Pipe Fittings Industry

- 1621 Plastic Pipe and Pipe Fittings Industry
- 163 Plastic Film and Sheeting Industry
- 1631 Plastic Film and Sheeting Industry
- 169 Other Plastic Products Industries
- 1691 Plastic Bag Industry
- 1699 Other Plastic Products Industries n.e.c.
- 17 Leather and Allied Products Industries**
- 171 Leather and Allied Products Industries
- 1711 Leather Tanneries
- 1712 Footwear Industry
- 1713 Luggage, Purse and Handbag Industry
- 1719 Other Leather and Allied Products Industries
- 18 Primary Textile Industries**
- 181 Man-Made Fibre and Filament Yarn Industry
- 1811 Man-Made Fibre and Filament Yarn Industry
- 182 Spun Yarn and Woven Cloth Industries
- 1821 Wool Yarn and Woven Cloth Industries
- 1829 Other Spun Yarn and Woven Cloth Industries
- 183 Broad Knitted Fabric Industry
- 1831 Broad Knitted Fabric Industry
- 19 Textile Products Industry**
- 191 Natural Fibres Processing and Felt Products Industry
- 1911 Natural Fibres Processing and Felt Products Industry
- 192 Carpet, Mat and Rug Industry
- 1921 Carpet, Mat and Rug Industry
- 193 Canvas and Related Products Industry
- 1931 Canvas and Related Products Industry
- 199 Other Textile Products Industries
- 1991 Narrow Fabric Industry
- 1992 Contract Textile Dyeing and Finishing Industry
- 1993 Household Products of Textile Materials Industry
- 1994 Hygiene Products of Textile Materials Industry
- 1995 Tire Cord Fabric Industry
- 1999 Other Textile Products Industries n.e.c.
- 24 Clothing Industry**
- 243 Men's and Boy's clothing Industries
- 2431 Men's and Boy's Coat Industry
- 2432 Men's and Boy's Suit and Jacket Industry
- 2433 Men's and Boy's Pants Industry
- 2434 Men's and Boy's Shirt and Underwear Industry
- 2435 Men's and Boy's Clothing Contractors
- 244 Women's Clothing Industries

- 2441 Women's Coat and Jacket Industry
- 2442 Women's Sportswear Industry
- 2443 Women's Dress Industry
- 2444 Women's Blouse and Shirt Industry
- 2445 Women's Clothing Contractors
- 245 Children's Clothing Industry
- 2451 Children's Clothing Industry
- 249 Other Clothing and Apparel Industries
- 2491 Sweater Industry
- 2492 Occupational Clothing Industry
- 2493 Glove Industry
- 2494 Hosiery Industry
- 2495 Fur Goods Industry
- 2496 Foundation Garment Industry
- 2499 Other Clothing and Apparel Industries n.e.c.
- 25 Wood Industries**
- 251 Sawmill, Planing Mill and Shingle Mill Products
- 2511 Shingle and Shake Industry
- 2512 Sawmill and Planing Mill Products Industry (Except Shingle and Shakes)
- 252 Veneer and Plywood Industries
- 2521 Hardwood Veneer and Plywood Industries
- 2522 Softwood Veneer and Plywood Industries
- 254 Sash, Door and Other Millwork Industries
- 2541 Prefabricated Wooden Buildings Industry
- 2542 Wooden Kitchen Cabinet and Bathroom Vanity Industry
- 2543 Wooden Door and Window Industry
- 2549 Other Millwork Industries
- 256 Wooden Box and Pallet Industry
- 2561 Wooden Box and Pallet Industry
- 258 Coffin and Casket Industry
- 2581 Coffin and Casket Industry
- 259 Other Wood Industries
- 2591 Wood Preservation Industry
- 2592 Particle Board Industry
- 2593 Wafer Board Industry
- 2599 Other Wood Industries n.e.c.
- 26 Furniture and Fixture Industries**
- 261 Household Furniture Industries
- 2611 Wooden Household Furniture Industry
- 2612 Upholstered Household Furniture Industry
- 2619 Other Household Furniture Industries
- 264 Office Furniture Industries

- 2641 Metal Office Furniture Industry
- 2649 Other Office Furniture Industries
- 269 Other Furniture and Fixture Industries
- 2691 Bed Spring and Mattress Industry
- 2692 Hotel, Restaurant and Institutional Furniture and Fixture Industry
- 2699 Other Office Furniture Industries n.e.c.
- 27 Paper and allied Products Industries**
- 271 Pulp and Paper Industries
- 2711 Pulp Industry
- 2712 Newsprint Industry
- 2713 PaperBoard Industry
- 2714 Building Board Industry
- 2719 Other Paper Industries
- 272 Asphalt Roofing Industry
- 2721 Asphalt Roofing Industry
- 273 Paper Box and Bag Industries
- 2731 Folding Carton and Set-Up Box Industry
- 2732 Corrugated Box Industry
- 2733 Paper Bag Industry
- 279 Other Converted Paper Products Industries
- 2791 Coated and Treated Paper Industry
- 2792 Stationery Paper Products Industry
- 2793 Paper Consumer Products Industry
- 2799 Other converted Paper Products Industries n.e.c.
- 28 Printing, Publishing and Allied Industries**
- 281 Commercial Printing Industries
- 2811 Business Forms Printing Industry
- 2819 Other Commercial Printing Industries
- 282 Platemaking, Typesetting and Bindery Industry
- 2821 Platemaking, Typesetting and Bindery Industry
- 283 Publishing Industries
- 2831 Book Publishing Industry
- 2839 Other Publishing Industries
- 284 Combined Publishing and Printing Industries
- 2841 Newspaper, Magazine and Periodical (Combined Publishing and Printing) Industry
- 2849 Other Combined Publishing and Printing Industries
- 29 Primary Metal Industries**
- 291 Primary Steel Industries
- 2911 Ferro-Alloys Industries
- 2912 Steel Foundries
- 2919 Other Primary Steel Industries
- 292 Steel Pipe and Tube Industry

- 2921 Steel Pipe and Tube Industry
- 294 Iron Foundries
- 2941 Iron Foundries
- 295 Non-Ferrous Metal Smelting and Refining Industries
- 2951 Primary Production of Aluminum
- 2959 Other Primary Smelting and Refining of Non-Ferrous Metal Industries
- 296 Aluminum Rolling, Casting and Extruding Industry
- 2961 Aluminum Rolling, Casting and Extruding Industry
- 297 Copper and Copper Alloy Rolling, Casting and Extruding Industry
- 2971 Copper and Copper Alloy Rolling, Casting and Extruding Industry
- 299 Other Rolled, Cast and Extruded Mon-Ferrous Metal Products Industries
- 2999 Other Rolled, Cast and Extruded Mon-Ferrous Metal Products Industries
- 30 Fabricated Metal Products Industries (Except Machinery and Transportation Equipment Industries)**
- 301 Power Boiler and Heat Exchanger Industry
- 3011 Power Boiler and Heat Exchanger Industry
- 302 Fabricated Structural Metal Products Industries
- 3021 Metal Tanks (Heavy Gauge) Industry
- 3022 Plate Work Industry
- 3023 Pre-Engineered Metal Buildings Industry (Except Portable)
- 3029 Other Fabricated Structural Metal Products Industries
- 303 Ornamental and Architectural Metal Products Industries
- 3031 Metal Door and Window Industry
- 3032 Prefabricated Portable Metal Buildings Industry
- 3039 Other Ornamental and Architectural Metal Products Industries
- 305 Wire and Wire Products Industries
- 3051 Upholstery and Coil Spring Industry
- 3052 Wire and Wire Rope Industry
- 3053 Industrial Fastener Industry
- 3059 Other Wire Products Industries
- 306 Hardware, Tool and Cutlery Industries
- 3061 Basic Hardware Industry
- 3062 Metal Dies, Moulds and Patterns Industry
- 3063 Hand Tool and Implement Industry
- 3069 Other Hardware and Cutlery Industries
- 307 Heating Equipment Industry
- 3071 Heating Equipment Industry
- 308 Machine Shop Industry
- 3081 Machine Shop Industry
- 309 Other Metal Fabricating Industries
- 3091 Metal Plumbing Fixtures and Fittings Industry
- 3092 Metal Valve Industry

- 3099 Other Metal Fabricating Industries n.e.c.
- 31 Machinery Industries (Except Electrical Machinery)**
- 311 Agricultural Implement Industry
- 3111 Agricultural Implement Industry
- 312 Commercial Refrigeration and Air Conditioning Equipment Industry
- 3121 Commercial Refrigeration and Air Conditioning Equipment Industry
- 319 Other Machinery and Equipment Industries
- 3191 Compressor, Pump and Industrial Fan Industry
- 3192 Construction and Mining Machinery and Materials Handling Equipment Industry
- 3193 Sawmill and Woodworking Machinery Industry
- 3194 Turbine and Mechanical Power Transmission Equipment Industry
- 3199 Other Machinery and Equipment Industries n.e.c.
- 32 Transportation Equipment Industries**
- 321 Aircraft and Aircraft Parts Industry
- 3211 Aircraft and Aircraft Parts Industry
- 323 Motor Vehicle Industry
- 3231 Motor Vehicle Industry
- 324 Truck and Bus Body and Trailer Industries
- 3241 Truck and Bus Body Industry
- 3242 Commercial Trailer Industry
- 3243 Non-Commercial Trailer Industry
- 3244 Mobile Home Industry
- 325 Motor Vehicle Parts and Accessories Industries
- 3251 Motor Vehicle Engine and Engine Parts Industry
- 3252 Motor Vehicle Wiring Assemblies Industry
- 3253 Motor Vehicle Stampings Industry
- 3254 Motor Vehicle Steering and Suspension Parts Industry
- 3255 Motor Vehicle Wheel and Brake Industry
- 3256 Plastic Parts and Accessories for Motor Vehicles Industry
- 3257 Motor Vehicle Fabric Accessories Industry
- 3259 Other Motor Vehicle Accessories, Parts and Assemblies Industries
- 326 Railroad Rolling Stock Industry
- 3261 Railroad Rolling Stock Industry
- 327 Shipbuilding and Repair Industry
- 3271 Shipbuilding and Repair Industry
- 328 Boatbuilding and Repair Industry
- 3281 Boatbuilding and Repair Industry
- 329 Other Transportation Equipment Industries
- 3299 Other Transportation Equipment Industries
- 33 Electrical and Electronic Products Industries**
- 331 Small Electrical Appliance Industry
- 3311 Small Electrical Appliance Industry

- 332 Major Appliance Industry (Electric and Non-Electric)
- 3321 Major Appliance Industry (Electric and Non-Electric)
- 333 Electric Lighting Industries
- 3331 Lighting Fixture Industry
- 3332 Electric Lamp and Shade Industry (Except Bulb and Tube)
- 3333 Electric Lamp (Bulb and Tube Industry)
- 334 Record Player, Radio and Television Receiver Industry
- 3341 Record Player, Radio and Television Receiver Industry
- 3335 Communication and Other Electronic Equipment Industries
- 3351 Telecommunication Equipment Industry
- 3352 Electronic Parts and Components Industry
- 3359 Other Communication and Electronic Equipment Industries
- 336 Office, Store and Business Machine Industries
- 3361 Electronic Computing and Peripheral Equipment Industry
- 3362 Electronic Office, Store and Business Machine Industry
- 3369 Other Offices, Store and Business Machine Industries
- 337 Electrical Industrial Equipment Industries
- 3371 Electrical Transformer Industry
- 3372 Electrical Switchgear and Protective Equipment Industry
- 3379 Other Electrical Industrial Equipment Industries
- 338 Communications and Energy Wire and Cable Industry
- 3381 Communications and Energy Wire and Cable Industry
- 339 Other Electrical Products Industries
- 3391 Battery Industry
- 3392 Non-Current Carrying Wiring Devices Industry
- 3399 Other Electrical Products Industries n.e.c.
- 35 Non-Metallic Mineral Products Industries**
- 351 Clay Products Industries
- 3511 Clay Products Industry (From Domestic Clay)
- 3512 Clay Products Industry (From Imported Clay)
- 352 Hydraulic Cement Industry
- 3521 Hydraulic Cement Industry
- 354 Concrete Products Industries
- 3541 Concrete Pipe Industry
- 3542 Structural Concrete Products Industry
- 3549 Other Concrete Products Industries
- 355 Ready-Mix Concrete Industry
- 3551 Ready-Mix Concrete Industry
- 356 Glass and Glass Products Industries
- 3561 Primary Glass and Glass Containers Industry
- 3562 Glass Products Industry (Except Glass Containers)
- 357 Abrasives Industry

- 3571 Abrasives Industry
- 358 Lime Industry
- 3581 Lime Industry
- 359 Other Non-Metallic Mineral Products Industries
- 3591 Refractories Industry
- 3592 Asbestos Products Industry
- 3593 Gypsum Products Industry
- 3594 Non-Metallic Mineral Insulation Materials Industry
- 3599 Other Non-Metallic Mineral Insulating Materials Industry n.e.c.
- 36 Refined Petroleum and Coal Products Industries**
- 361 Refined Petroleum Products Industries
- 3611 Refined Petroleum Products Industry (Except Lubricating Oil and Grease)
- 3612 Lubricating Oil and Grease Industry
- 369 Other Petroleum and Coal Products Industries
- 3699 Other Petroleum and Coal Products Industries
- 37 Chemical and Chemical Products Industries**
- 371 Industrial chemicals Industries n.e.c.
- 3711 Industrial chemicals Industries n.e.c.
- 3712 Industrial Organic Chemical Industries n.e.c.
- 372 Agricultural Chemical Industries
- 3721 Industrial Organic Chemical Industries n.e.c.
- 3722 Mixed Fertilizer Industry
- 3729 Other Agricultural Chemical Industries
- 373 Plastic and Synthetic Resin Industry
- 3731 Plastic and Synthetic Resin Industry
- 374 Pharmaceutical and Medicine Industry
- 3741 Pharmaceutical and Medicine Industry
- 375 Paint and Varnish Industry
- 3751 Paint and Varnish Industry
- 376 Soap and Cleaning Compounds Industry
- 3761 Soap and Cleaning Compounds Industry
- 377 Toilet Preparations Industry
- 3771 Toilet Preparations Industry
- 379 Other Chemical Products Industries
- 3791 Printing Ink Industry
- 3792 Adhesives Industry
- 3799 Other Chemical Products Industries n.e.c.
- 39 Other Manufacturing Industries**
- 391 Scientific and Professional Equipment Industries
- 3911 Indicating, Recording and Controlling Instruments Industry
- 3912 Other Instruments and Related Products Industry
- 3913 Clock and Watch Industry

- 3914 Ophthalmic Goods Industry
- 392 Jewellery and Precious Metal Industries
- 3921 Jewellery and Silverware Industry
- 3922 Precious Metal Secondary Refining Industry
- 393 Sporting Goods and Toy Industries
- 3931 Sporting Goods Industry
- 3932 Toys and Games Industry
- 397 Sign and Display Industry
- 3971 Sign and Display Industry
- 399 Other Manufactured Products Industries
- 3991 Broom, Brush and Mop Industry
- 3992 Button, Buckle and Clothes Fastener Industry
- 3993 Floor Tile, Linoleum and Coated Fabric Industry
- 3994 Musical Instrument and Sound Recording Industry
- 3999 Other Manufactured Products Industries n.e.c.
- 40 Building, Developing and General Contracting Industries**
- 401 Residential Building and Development
- 4011 Single Family Housing
- 4012 Apartment and Other Multiple Housing
- 4013 Residential Renovation
- 402 Non-Residential Building and Development
- 4021 Manufacturing and Light Industrial Building
- 4022 Commercial Building
- 4023 Institutional Building
- 41 Industrial and Heavy (Engineering) Construction Industries**
- 411 Industrial Construction (Other Than Buildings)
- 4111 Power Plants (Except Hydroelectric)
- 4112 Gas, Oil and Other Energy Related Structures (Except Pipelines)
- 4113 Gas and Oil Pipelines
- 4119 Other Industrial Construction
- 412 Highway and Heavy Construction
- 4121 Highways, Streets and Bridge
- 4122 Waterworks and Sewage Systems
- 4123 Hydroelectric Power Plants and Related Structures (Except Transmission Lines)
- 4124 Power and Telecommunication Transmission Lines
- 4129 Other Heavy Construction
- 42 Trade Contracting Industries**
- 421 Site Work
- 4211 Wrecking and Demolition
- 4212 Water Well Drilling
- 4213 Septic System Installation
- 4214 Excavating and Grading

- 4215 Equipment Rental (With Operator)
- 4216 Asphalt Paving
- 4217 Fencing Installation
- 4219 Other Site Work
- 422 Structural and Related Work
- 4221 Pile Driving Work
- 4222 Form Work
- 4223 Steel Reinforcing
- 4224 Concrete Pouring and Finishing
- 4225 Precast Concrete Installation
- 4226 Rough and Framing Carpentry
- 4227 Structural Steel Erection
- 4229 Other Structural and Related Work
- 423 Exterior Close-in Work
- 4231 Masonry Work
- 4232 Siding Work
- 4233 Glass and Glazing Work
- 4234 Insulation Work
- 4235 Roof Shingling
- 4236 Sheet Metal and Built-up Roofing
- 4239 Other Exterior Close-In Work
- 424 Plumbing, Heating and Air Conditioning, Mechanical Work
- 4241 Plumbing
- 4242 Dry Heating and Gas Piping Work
- 4243 Wet Heating and Air-Conditioning Work
- 4244 Sheet Metal and Other Duct Work
- 425 Mechanical Specialty Work
- 4251 Process Piping Work
- 4252 Automatic Sprinkler System Installation
- 4253 Commercial Refrigeration Work
- 4254 Environmental Control Work
- 4255 Millwright and Rigging
- 4256 Thermal Insulation Work
- 4259 Other Mechanical Specialty Work
- 426 Electrical Work
- 4261 Electrical Work
- 427 Interior and Finishing Work
- 4271 Plastering and Stucco Work
- 4272 Drywall Work
- 4273 Acoustical Work
- 4274 Finish Carpentry
- 4275 Painting and Decorating Work

- 4276 Terrazzo and Tile Work
- 4277 Hardwood flooring Installation
- 4278 Resilient Flooring and Carpet Work
- 4279 Other Interior and Finishing Work
- 429 Other Trade Work
- 4291 Elevator and Escalator Installation
- 4292 Ornamental and Miscellaneous Fabricated Metal
- 4293 Residential Swimming Pool Installation
- 4299 Other Trade Work n.e.c.
- 44 Service Industries Incidental to Construction**
- 441 Project Management, Construction
- 4411 Project Management, Construction
- 449 Other Services Incidental to Construction
- 4491 Land Developers
- 4499 Other Services Incidental to Construction n.e.c.
- 45 Transportation Industries**
- 451 Air Transport Industries
- 4511 Scheduled Air Transport Industry
- 4512 Non-Scheduled Air Transport,Chartered, Industry
- 4513 Non-Scheduled Air Transport, Specialty, Industry
- 452 Service Industries Incidental to Air Transport
- 4521 Airport Operations Industry
- 4522 Aircraft Rental Industry
- 4523 Aircraft Servicing Industry
- 4529 Other Service Industries Incidental to Air Transport
- 453 Railway Transport and Related Service Industries
- 4531 Railway Transport Industry
- 4532 Service Industry Incidental to Railway Transport
- 454 Water Transport Industries
- 4541 Freight and Passenger Water Transport Industry
- 4542 Ferry Industry
- 4543 Marine Towing Industry
- 4544 Ship Chartering Industry
- 4549 Other Water Transport Industries
- 455 Service Industries Incidental to Water Transport
- 4551 Marine Cargo Handling Industry
- 4552 Harbour and Prot Operation Industry
- 4553 Marine Salvage Industry
- 4554 Piloting Service, Water Transport Industry
- 4555 Marine Shipping Agencies Industry
- 4559 Other Service Industries Incidental to Water Transport
- 456 Truck Transport Industries

- 4561 General Freight Trucking Industry
- 4562 Used Goods Moving and Storage Industry
- 4563 Bulk Liquids Trucking Industry
- 4564 Dry Bulk Materials Trucking Industry
- 4565 Forest Products Trucking Industry
- 4569 Other Truck Transport Industries
- 457 Public Passenger Transit Systems Industries
- 4571 Urban Transit Systems Industry
- 4572 Interurban and Rural Transit Systems Industry
- 4573 School Bus Operations Industry
- 4574 Charter and Sightseeing Bus Services Industry
- 4575 Limousine Service to Airports and Stations Industry
- 458 Other Transportation Industries
- 4581 Taxicab Industry
- 4589 Other Transportation Industries n.e.c.
- 459 Other Service Industries Incidental to Transportation
- 4591 Highway, Street and Bridge Maintenance Industry
- 4592 Freight Forwarding Industry
- 4599 Other Service Industries Incidental to Transportation n.e.c.
- 46 Pipeline Transport Industries**
- 461 Pipeline Transport Industries
- 4611 Natural Gas Pipeline Transport Industry
- 4612 Crude Oil Pipeline Transport Industry
- 4619 Other Pipeline Transport Industries
- 47 Storage and Warehousing Industries**
- 471 Grain Elevator Industry
- 4711 Grain Elevator Industry
- 479 Other Storage and Warehousing Industries
- 4791 Refrigerated Warehousing Industry
- 4799 Other Storage and Warehousing Industries n.e.c.
- 48 Communication Industries**
- 481 Telecommunication Broadcasting Industries
- 4811 Radio Broadcasting Industry
- 4812 Television Broadcasting Industry
- 4813 Combined Radio and Television Broadcasting Industry
- 4814 Cable Television Industry
- 482 Telecommunication Carriers Industry
- 4821 Telecommunication Carriers Industry
- 483 Other Telecommunication Industries
- 4839 Other Telecommunication Industries
- 484 Postal and Courier Service Industries
- 4841 Postal Service Industry

- 4842 Courier Service Industry
- 49 Other Utility Industries**
- 491 Electric Power Systems Industry
- 4911 Electric Power Systems Industry
- 492 Gas Distribution Systems Industry
- 4921 Gas Distribution Systems Industry
- 493 Water Systems Industry
- 4931 Water Systems Industry
- 499 Other Utility Industries n.e.c.
- 4999 Other Utility Industries n.e.c.
- 50 Farm Products Industries**
- 501 Farm Products, Wholesale
- 5011 Livestock Wholesale
- 5012 Grain Wholesale
- 5019 Other Farm Products
- 51 Petroleum Products Industries, Wholesale**
- 511 Petroleum Products Industries, Wholesale
- 5111 Petroleum Products Industries, Wholesale
- 52 Food, Beverage, Drug and Tobacco Industries, Wholesale**
- 521 Food Wholesale
- 5211 Confectionery Wholesale
- 5212 Frozen Foods (Packaged) Wholesale
- 5213 Dairy Products Wholesale
- 5214 Poultry and Eggs Wholesale
- 5215 Fish and Seafood Wholesale
- 5216 Fresh Fruit and Vegetables Wholesale
- 5217 Meat and Meat Products Wholesale
- 5219 Other Foods Wholesale
- 522 Beverages Wholesale
- 5221 Beverages Wholesale
- 523 Drugs and Toilet Preparations Wholesale
- 5231 Drugs Wholesale
- 5232 Toilet Soaps and Preparations Wholesale
- 5239 Drug Sundries and Other Drugs and Toilet Preparations Wholesale
- 524 Tobacco Products Wholesale
- 5241 Tobacco Products Wholesale
- 53 Apparel and Dry Goods Industries Wholesale**
- 531 Apparel Wholesale
- 5311 Men's and Boys' Clothing and Furnishings Wholesale
- 5312 Women's and Misses' and Children's Hosiery Underwear and Apparel Accessories Wholesale
- 5314 Footwear Wholesale

- 5319 Other Apparel Wholesale
- 532 Dry Goods Wholesale
- 5321 Piece Goods Wholesale
- 5329 Notions and Other Dry Goods Wholesale
- 54 Household Goods Industries Wholesale**
- 541 Electrical and Electronic Household Appliances and Parts Wholesale
- 5411 Electrical Household Appliances Wholesale
- 5412 Electronic Household Appliances Wholesale
- 542 Household Furniture Wholesale
- 5421 Household Furniture Wholesale
- 543 Household Furnishings Wholesale
- 5431 China Glassware Crockery and Pottery Wholesale
- 5431 Floor Coverings Wholesale
- 5433 Linens Draperies and Other Textile Furnishings Wholesale
- 5439 Other Household Furnishings Wholesale
- 55 Motor Vehicle Parts and Accessories Industries Wholesale**
- 551 Motor Vehicles Wholesale
- 5511 Automobiles Wholesale
- 5512 Trucks and Buses Wholesale
- 5519 Other Motor Vehicles and Trailers Wholesale
- 552 Motor Vehicle Parts and Accessories Wholesale
- 5521 Tires and Tubes Wholesale
- 5529 Other Motor Vehicle Parts and Accessories Wholesale
- 56 Metals Hardware Plumbing Heating and Building Materials Industries Wholesale**
- 561 Metal and Metal Products Wholesale
- 5611 Iron and Steel Primary Forms and Structural Shapes Wholesale
- 5612 Other Iron and Steel Products Wholesale
- 5613 Non-ferrous Metal and Metal Products Wholesale
- 5619 Combination Metal and Metal Products
- 562 Hardware and Plumbing Heating and Air Conditioning Equipment and Supplies Wholesale
- 5621 Hardware Wholesale
- 5622 Plumbing Heating and Air Conditioning Equipment and Supplies Wholesale
- 563 Lumber and Building Materials Wholesale
- 5631 Lumber Plywood and Millwork Wholesale
- 5632 Paint Glass and Wallpaper Wholesale
- 5639 Other Building Materials Wholesale
- 57 Machinery Equipment and Supplies Industries Wholesale**
- 571 Farm Machinery Equipment and Supplies Wholesale
- 5711 Farm Machinery Equipment and Supplies Wholesale
- 572 Construction Forestry and Mining Machinery Equipment and Supplies Wholesale

- 5721 Construction Forestry Machinery Equipment and Supplies Wholesale
- 5722 Mining Machinery Equipment and Supplies Wholesale
- 573 Industrial Machinery Equipment and Supplies Wholesale
- 5731 Industrial Machinery Equipment and Supplies Wholesale
- 574 Electrical and Electronic Machinery Equipment and Supplies Wholesale
- 5741 Electrical Wiring Supplies and Electrical Construction Material Wholesale
- 5742 Electrical Generating and Transmission Equipment and Supplies Wholesale
- 5743 Electronic Machinery Equipment and Supplies Wholesale
- 5749 Other Electrical and Electronic Machinery Equipment and Supplies Wholesale
- 579 Other Machinery, Equipment and Supplies Wholesale
- 5791 Office and Store Machinery Equipment and Supplies Wholesale
- 5792 Service Machinery Equipment and Supplies Wholesale
- 5793 Professional Machinery Equipment and Supplies Wholesale
- 5799 Other Machinery, Equipment and Supplies n.e.c. Wholesale
- 59 Other Products Industries Wholesale**
- 591 Waste Materials Wholesale
- 5911 Automobile Wrecking
- 5919 Other Waste Materials Wholesale
- 592 Paper and Paper Products Wholesale
- 5921 Newsprint Wholesale
- 5922 Stationery and Office Supplies Wholesale
- 5929 Other Paper and Paper Products, Wholesale
- 593 Agricultural Supplies Wholesale
- 5931 Agricultural Feeds Wholesale
- 5932 Seeds and Seed Processing Wholesale
- 5939 Agricultural Chemical and Other Farm Supplies Wholesale
- 594 Toys, Amusement and Sporting Goods Wholesale
- 5941 Toys Novelties and Fireworks Wholesale
- 5942 Amusement and Sporting Goods Wholesale
- 595 Photographic Equipment and Musical Instruments and Supplies Wholesale
- 5951 Photographic Equipment and Supplies Wholesale
- 5952 Musical Instruments and Accessories, Wholesale
- 596 Jewellery and Watches Wholesale
- 5961 Jewellery and Watches Wholesale
- 597 Industrial and Household Chemicals Wholesale
- 5971 Industrial and Household Chemicals Wholesale
- 598 General Merchandise Wholesale
- 5981 General Merchandise Wholesale
- 599 Other Products n.e.c. Wholesale
- 5991 Books Periodicals and Newspapers, Wholesale
- 5992 Second-Hand Goods Wholesale (Except Machinery and Automotive)
- 5993 Forest Products Wholesale

- 5999 Other Products n.e.c. Wholesale
- 60 Food, Beverage and Drug Industries, Retail**
- 601 Food Stores
- 6011 Food (Groceries) Stores
- 6012 Food (Specialty) Stores
- 602 Liquor, Wine and Beer Stores
- 6021 Liquor Stores
- 6022 Wine Stores
- 6023 Beer Stores
- 603 Prescription Drugs and Patent Medicine Stores
- 6031 Pharmacies
- 6032 Patent Medicine and Toiletries Stores
- 61 Shoe, Apparel, Fabric and Yarn Industries, Retail**
- 611 Shoe Stores
- 6111 Shoe Stores
- 612 Men's Clothing Stores
- 6121 Men's Clothing Stores
- 613 Women's Clothing Stores
- 6131 Women's Clothing Stores
- 614 Clothing Stores n.e.c.
- 6141 Clothing Stores n.e.c.
- 615 Fabric and Yarn Stores
- 6151 Fabric and Yarn Stores
- 62 Household Furniture, Appliances and Furnishings Industries Retail**
- 621 Household Furniture Stores
- 6211 Household Furniture Stores (With Appliances and Furnishings)
- 6212 Household Furniture Stores (Without Appliances and Furnishings)
- 6213 Furniture Refinishing and Repair Shops
- 622 Appliance, Television, Radio and Stereo Stores
- 6221 Appliance, Television, Radio and Stereo Stores
- 6222 Television, Radio and Stereo Stores
- 6223 Appliance, Television, Radio and Stereo Repair Shops
- 623 Household Furnishings Stores
- 6231 Floor Covering Stores
- 6232 Drapery Stores
- 6239 Other Household Furnishings Stores
- 63 Automotive Vehicles Parts and Accessories Industries Sales and Service**
- 631 Automobile Dealers
- 6311 Automobile (new) Dealers
- 6312 Automobile (Used) Dealers
- 632 Recreational Vehicle Dealers
- 6321 Motor Home and Travel Trailer Dealers

- 6322 Boats, Outboard Motors and Boating Accessories Dealers
- 6323 Motorcycle and Snowmobile Dealers
- 6329 Other Recreational Vehicle Dealers
- 633 Gasoline Service Stations
- 6331 Gasoline Service Stations
- 634 Automotive Parts and Accessories Stores
- 6341 Home and Auto Supply Stores
- 6342 Tire, Battery, Parts and Accessories Stores
- 635 Motor Vehicle Repair Shops
- 6351 Garages (General Repairs)
- 6352 Paint and Body Repair Shops
- 6353 Muffler Replacement Shops
- 6354 Motor Vehicle Glass Replacement Shops
- 6355 Motor Vehicle Transmission Repair and Replacement Shops
- 6359 Other Motor Vehicle Repair Shops
- 639 Other Motor Vehicle Services
- 6391 Car Washes
- 6399 Other Motor Vehicle Services n.e.c.
- 64 General Retail Merchandising Industries**
- 641 General Merchandise Stores
- 6411 Department Stores
- 6412 General Stores
- 6413 Other General Merchandise Stores
- 65 Other Retail Stores Industries**
- 651 Book and Stationery Stores
- 6511 Book and Stationery Stores
- 652 Florists, Lawn and Garden Centres
- 6521 Florist Shops
- 6522 Lawn and Garden Centres
- 653 Hardware, Paint, Glass dan Wallpaper Stores
- 6531 Hardware Stores
- 6532 Paint, Glass and Wallpaper Stores
- 654 Sporting Goods and Bicycle Shops
- 6541 Sporting Goods Stores
- 6542 Bicycle Shops
- 655 Musical Instrument and Record Stores
- 6551 Musical Instrument Stores
- 6552 Record and Tape Stores
- 656 Jewellery Stores and Watch and Jewellery Repair Shops
- 6561 Jewellery Stores
- 6562 Watch and Jewellery Repair Shops
- 657 Camera and Photographic Supply Stores

- 6571 Camera and Photographic Supply Stores
- 658 Toy, Hobby, Novelty, and Souvenir Stores
- 6581 Toy and Hobby Stores
- 6582 Gift Novelty and Souvenir Stores
- 659 Other Retail Stores
- 6591 Second-Hand Merchandise Stores n.e.c.
- 6592 Opticians' Shops
- 6593 Art Galleries and Artists' Supply Stores
- 6594 Luggage and Leather Goods Stores
- 6595 Monument and Tombstone Dealers
- 6596 Pet Stores
- 6597 Coin and Stamp Dealers
- 6598 Mobile Home Dealers
- 6599 Other Retail Stores n.e.c.
- 69 Non-Store Retail Industries**
- 691 Vending Machine Operators
- 6911 Vending Machine Operators
- 692 Direct Sellers
- 6921 Direct Sellers
- 70 Deposit Accepting Intermediary Industries**
- 701 Central Bank
- 7011 Central Bank
- 702 Chartered Banks and Other Banking-Type Intermediaries
- 7021 Chartered Banks
- 7029 Other Banking-Type Intermediaries
- 703 Trust Companies
- 7031 Trust Companies
- 704 Deposit Accepting Mortgage Companies
- 7041 Deposit Accepting Mortgage Companies (Except Co-operatives)
- 7042 Co-operative Mortgage Companies
- 705 Credit Unions
- 7051 Local Credit Unions
- 7052 Central Credit Unions
- 709 Other Deposit Accepting Intermediaries
- 7099 Other Deposit Accepting Intermediaries
- 71 Consumer and Business Financing Intermediary Industries**
- 711 Consumer Loan Companies
- 7111 Consumer Loan Companies
- 712 Business Financing Companies
- 7121 Sales Finance Companies
- 7212 Credit Card Companies
- 7213 Factoring Companies

- 7124 Financial Leasing Companies
- 7125 Venture Capital Companies
- 7129 Other Business Financing Companies
- 72 Investment Intermediary Industries**
- 721 Portfolio Investment Intermediaries
- 7211 Investment (Mutual) Funds
- 7212 Retirement Savings Funds
- 7213 Segregated Funds
- 7214 Investment companies
- 7214 Holding Companies
- 722 Mortgage Companies
- 7221 Mortgage Investment Companies
- 7222 Real Estate Investment Trusts
- 7229 Other Mortgage Companies
- 729 Other Investment Intermediaries
- 7291 Trusteed Pension Funds
- 7292 Estate, Trust and Agency Funds
- 7299 Other Investment Intermediaries n.e.c.
- 73 Insurance Industries**
- 731 Life Insurers
- 7311 Life Insurers
- 732 Deposit Insurers
- 7321 Deposit Insurers
- 733 Property and Casualty Insurers
- 7331 Health Insurers
- 7339 Other Property and Casualty Insurers
- 74 Other Financial Intermediary Industries**
- 741 Security Brokers and Dealers
- 7411 Investment Dealers
- 7412 Stock Brokers
- 7413 Commodity Brokers
- 742 Mortgage Brokers
- 7421 Mortgage Brokers
- 743 Security and Commodity Exchanges
- 7431 Stock Exchanges
- 7432 Commodity Exchanges
- 749 Other Financial Intermediaries n.e.c.
- 7499 Other Financial Intermediaries n.e.c.
- 75 Real Estate Operator Industries (Except Developers)**
- 751 Operators of Buildings and Dwellings
- 7511 Operators of Residential Buildings and Dwellings
- 7512 Operators of Non-Residential Buildings

- 759 Other Real Estate Operators
- 7599 Other Real Estate Operators
- 76 Insurance and Real Estate Agent Industries**
- 761 Insurance and Real Estate Agencies
- 7611 Insurance and Real Estate Agencies
- 77 Business Service Industries**
- 771 Employment Agencies and Personnel Suppliers
- 7711 Employment Agencies
- 7712 Personnel Suppliers
- 772 Computer and Related Services
- 7721 Computer Services
- 7722 Computer Equipment Maintenance and Repair
- 773 Accounting and Bookkeeping Services
- 7731 Offices of Chartered and Certified Accountants
- 7739 Other Accounting and Bookkeeping Services
- 774 Advertising Services
- 7741 Advertising Agencies
- 7742 Media Representatives
- 7743 Outdoor Display and Billboard Advertising
- 7749 Other Advertising Services
- 775 Architectural, Engineering and Other Scientific and Technical Services
- 7751 Offices on Architects
- 7752 Offices of Engineers
- 7759 Other Scientific and Technical Services
- 776 Offices of Lawyers and Notaries
- 7761 Offices of Lawyers and Notaries
- 777 Management Consulting Services
- 7771 Management Consulting Services
- 779 Other Business Services
- 7791 Security and Investigation Services
- 7792 Credit Bureau Services
- 7793 Collection Agencies
- 7794 Customs Brokers
- 7795 Telephone Answering Services
- 7796 Duplicating Services
- 7799 Other Business Services n.e.c.
- 81 Federal Government Service Industries**
- 811 Defense Services
- 8111 Defense Services
- 812 Protective Services
- 8121 Courts of Law
- 8122 Correctional Services

- 8123 Police Services
- 8125 Regulatory Services
- 8129 Other Protective Services
- 813 Labour, Employment and Immigration Services
- 8131 Labour and Employment Services
- 8132 Immigration Services
- 8139 Other Labour, Employment and Immigration Services
- 814 Foreign Affairs and International Assistance
- 8141 Foreign Affairs
- 8142 International Assistance
- 815 General Administrative Services
- 8151 Executive and Legislative Administration
- 8152 Finance and Economic Administration
- 8153 Taxation Administration
- 8154 Intergovernmental Affairs Administration
- 8159 Other General Administrative Services
- 816 Human Resource Administration
- 8161 Health Administration
- 8162 Social Service Administration
- 8163 Education Administration
- 8164 Recreation and Culture Administration
- 817 Economic Services Administration
- 8171 Transportation and Communication Administration
- 8172 Resource Conservation and Industrial Development Administration
- 8173 Environment Administration
- 8174 Housing Administration
- 8175 Regional Planning and Development Administration
- 8176 Research Administration
- 82 Provincial and Territorial Government Service Industries**
- 822 Protective Services
- 8221 Courts of Law
- 8222 Correctional Services
- 8223 Police Services
- 8224 Firefighting Services
- 8225 Regulatory Services
- 8229 Other Protective Services
- 823 Labour, Employment and Immigration Services
- 8231 Labour and Employment Services
- 825 General Administrative Services
- 8251 Executive and Legislative Administration
- 8252 Finance and Economic Administration
- 8253 Taxation Administration

- 8254 Intergovernmental Affairs Administration
- 8259 Other General Administrative Services
- 826 Human Resource Administration
- 8261 Health Administration
- 8262 Social Service Administration
- 8263 Education Administration
- 8264 Recreation and Culture Administration
- 827 Economic Services Administration
- 8271 Transportation and Communication Administration
- 8272 Resource Conservation and Industrial Development Administration
- 8273 Environment Administration
- 8274 Housing Administration
- 8275 Regional Planning and Development Administration
- 8276 Research Administration
- 83 Local Government Service Industries**
- 832 Protective Services
- 8321 Courts of Law
- 8322 Correctional Services
- 8323 Police Services
- 8324 Firefighting Services
- 8325 Regulatory Services
- 8326 Other Protective Services
- 835 General Administrative Services
- 8351 Executive and Legislative Administration
- 8352 Finance and Economic Administration
- 8353 Taxation Administration
- 8354 Intergovernmental Affairs Administration
- 8359 Other General Administrative Services
- 836 Human Resource Administration
- 8361 Health Administration
- 8362 Social Service Administration
- 8363 Education Administration
- 8364 Recreation and Culture Administration
- 837 Economic Services Administration
- 8371 Transportation Administration
- 8372 Resource Conservation and Industrial Development Administration
- 8373 Environment Administration
- 8374 Housing Administration
- 8375 Regional Planning and Development Administration
- 84 International and Other Extra-Territorial Government Service Industries**
- 841 International and Other Extra-Territorial Agencies
- 8411 International and Other Extra-Territorial Agencies

85 Educational Service Industries

- 851 Elementary and Secondary Education
- 8511 Elementary and Secondary Education
- 852 Post-Secondary Non-University Education
- 8521 Post-Secondary Non-University Education
- 853 University Education
- 8531 University Education
- 854 Library Services
- 8541 Library Services
- 855 Museums and Archives
- 8551 Museums and Archives
- 859 Other Educational Services
- 8599 Other Educational Services

86 Health and Social Service Industries

- 861 Hospitals
 - 8611 General Hospitals
 - 8612 Rehabilitation Hospitals
 - 8613 Extended Care Hospitals
 - 8614 Mental (Psychiatric) Hospitals
 - 8615 Addiction Hospitals
 - 8616 Nursing Stations and Outpost Hospitals
 - 8617 Children's (Paediatric) Hospitals
 - 8619 Other Specialty Hospitals
- 862 Other Institutional Health and Social Services
 - 8621 Homes for Personal and Nursing Care
 - 8622 Homes for Physically Handicapped and/or Disabled
 - 8623 Homes for Mentally Retarded
 - 8624 Homes for Mentally Handicapped and /or Disabled
 - 8625 Homes for Emotionally Disturbed Children
 - 8626 Homes for Alcohol/Drug Addicts
 - 8627 Homes for Children in Need of Protection
 - 8628 Homes for Single Mothers
 - 8629 Other Institutional Health and Social Services n.e.c.
- 863 Non-Institutional Health Services
 - 8631 Ambulance Services
 - 8632 Drug Addiction and Alcoholism Treatment Clinics
 - 8633 Health Rehabilitation Clinics
 - 8634 Home Care Services (Including Home Nursing)
 - 8635 Public Health Clinics/Community Health Centres
 - 8639 Other Non-Institutional Health Services
- 864 Non-Institutional Social Services
 - 8641 Child Day-Care and Nursery School Services

- 8642 Child Welfare Services
- 8643 Family Planning Services
- 8644 Sheltered Workshops
- 8645 Home-Maker Services
- 8646 Meal Services (Non-Commercial)
- 8647 Social Rehabilitation Services
- 8648 Crisis Intervention
- 8649 Other Non-Institutional Social Services
- 865 Offices of Physicians, Surgeons and Dentists, Private Practice
- 8651 Offices of Physicians, General Practice
- 8652 Offices of Physicians and Surgeons, Specialists
- 8653 Offices of Dentists, General Practice
- 8654 Offices of Dentists, Specialists
- 866 Offices of Other Health Practitioners
- 8661 Offices of Chiropractors and Osteopaths
- 8662 Offices of Nurses, Registered
- 8663 Offices of Nurses, Practical
- 8664 Offices of Nutritionists/Dietitians
- 8665 Offices of Physiotherapists/Occupational Therapists
- 8666 Offices of Optometrists
- 8667 Offices of Podiatrists and Chiropodists
- 8668 Offices of Denturists
- 8669 Offices of Other Health Practitioners
- 867 Offices of Social Services Practitioners
- 8671 Offices of Psychologists
- 8672 Offices of Social Workers
- 8679 Offices of Other Social Service Practitioners
- 868 Medical and Other Health Laboratories
- 8681 Medical Laboratories
- 8682 Radiological Laboratories
- 8683 Combined Medical and Radiological laboratories
- 8684 Public Health Laboratories
- 8685 Blood Bank Laboratories
- 8689 Other Health Laboratories
- 869 Health and Social Service Association and Agencies
- 8691 Health Care and Public Safety Promotion Associations and Agencies
- 8692 Health Care Standards Agencies
- 8693 Health Care Research Agencies
- 8694 Social Service Planning and Advocacy Agencies
- 8699 Other Health and Social Service Associations and Agencies
- 91 Accommodation Service Industries**
- 911 Hotels, Motels and Tourist Courts

- 9111 Hotels and Motor Hotels
- 9112 Motels
- 9113 Tourist Courts and Cabins
- 9114 Guest Houses and Tourist Homes
- 912 Lodging Houses and Residential Clubs
- 9121 Lodging Houses and Residential Clubs
- 913 Camping Grounds and Travel Trailer Parks
- 9131 Camping Grounds and Travel Trailer Parks
- 914 Recreation and Vacation Camps
- 9141 Outfitters (Hunting and Fishing Camps)
- 9149 Other Recreation and Vacation Camps
- 92 Food and Beverage Service Industries**
- 921 Food Services
- 9211 Restaurants, Licensed
- 9212 Restaurants, Unlicensed (Including Drive-Ins)
- 9213 Take-out Food Services
- 9214 Caterers
- 922 Taverns, Bars and Night Clubs
- 9221 Taverns, Bars and Night Clubs
- 96 Amusement and Recreational Service Industries**
- 961 Motion Picture, Audio and Video Production and Distribution
- 9611 Motion Picture and Video Production
- 9612 Motion Picture and Video Distribution
- 9613 Motion Picture Laboratories and Video Production Facilities
- 9614 Sound Recording Services
- 9619 Other Motion Picture, Audio and Video Services
- 962 Motion Picture Exhibition
- 9621 Regular Motion Picture Theatres
- 9622 Outdoor Motion Picture Theatres
- 9629 Other Motion Picture Exhibition
- 963 Theatrical and Other Staged Entertainment Services
- 9631 Entertainment Production Companies and Artists
- 9639 Other Theatrical and Stage Entertainment Services
- 964 Commercial Spectator Sports
- 9641 Professional Sports Clubs
- 9642 Professional Athletes and Promoters on Own Accounts
- 9643 Horse Race Tracks
- 9644 Other Race Tracks
- 965 Sports and Recreation Clubs and Services
- 9651 Golf Courses
- 9652 Curling Clubs
- 9653 Skiing Facilities

- 9654 Boat Rentals and Marinas
- 9659 Other Sports and Recreation Clubs
- 966 Gambling Operations
- 9661 Gambling Operations
- 969 Other Amusement and Recreational Services
- 9691 Bowling Alleys and Billiard Parlours
- 9692 Amusement Park, Carnival and Circus Operations
- 9693 Dance Halls, Studios and Schools
- 9694 Coin-Operated Amusement Services
- 9695 Roller Skating Facilities
- 9696 Botanical and Zoological Gardens
- 9699 Other Amusement and Recreational Services
- 97 Personal and Household Service Industries**
- 971 Barber and Beauty Shops
- 9711 Barber Shops
- 9712 Beauty Shops
- 9713 Combination Barber and Beauty Shops
- 972 Laundries and Cleaners
- 9721 Power Laundries and/or Dry Cleaners
- 9722 Distributors and/or Agents for Dry Cleaners
- 9723 Self-Serve Laundries and/or Dry Cleaners
- 9724 Valet Services, Pressing and/or Repair
- 9725 Linen Supply
- 9726 Carpet Cleaning
- 9729 Other Laundry and Dry Cleaning Services
- 973 Funeral Services
- 9731 Funeral Homes
- 9732 Cemeteries and Crematoria
- 974 Private Households
- 9741 Private Households
- 979 Other Personal and Household Services
- 9791 Shoe Repair
- 9792 Fur Cleaning, Repair and Storage
- 9799 Other Personal and Household Services n.e.c.
- 98 Membership Organization Industries**
- 981 Religious Organizations
- 9811 Religious Organizations
- 982 Business Associations
- 9821 Business Associations
- 983 Professional Membership Associations
- 9831 Professional Health and Social Service Membership Associations
- 9839 Other Professional Membership Associations

- 984 Labour Organizations
- 9841 Labour Organizations
- 986 Civic and Fraternal Organizations
- 9861 Civic and Fraternal Organizations
- 99 Other Service Industries**
- 991 Machinery and Equipment Renting and Leasing Services
- 9911 Industrial Machinery and Equipment Rental and Leasing
- 9912 Audio-Visual Equipment Rental and Leasing
- 9913 Office Furniture and Machinery Rental and Leasing
- 9919 Other Machinery and Equipment Rental and Leasing
- 992 Automobile and Truck Rental and Leasing Services
- 9921 Automobile and Truck Rental and Leasing Services
- 993 Photographers
- 9931 Photographers
- 994 Other Repair Services
- 9941 Electric Motor Repair
- 9942 Welding
- 9949 Other Repair Services n.e.c.
- 995 Services to Buildings and Dwellings
- 9951 Disinfecting and Exterminating Services
- 9952 Window Cleaning Services
- 9953 Janitorial Services
- 9959 Other Services to Buildings and Dwellings
- 996 Travel Services
- 9961 Ticket and Travel Agencies
- 9962 Tour Wholesalers and Operators
- 999 Other Services n.e.c.
- 9991 Parking Lots and Parking Garages
- 9999 Other Services n.e.c.
- NC02 Waste Disposal Operations
- NC03 Storage Facilities for Bulk Solids
- NC04 Storage Facilities for Bulk Liquids
- NC05 Anthracite Coal Mines
- NC06 Placer Mines
- NC07 Medical, Health and Other Laboratories
- NC08 Other Wood Products Industries
- NC09 Other Repair Shops
- NC10 Other Recycling Operations
- NC11 An Industry Not Referred to Elsewhere in this Schedule

Table 5. B.C. MELP discharge to codes and descriptions.

Discharge To Table	
CODE	DESCRIPTION
0	Not Applicable
1	Surface Water (Rivers/Lakes/Estuaries)
2	Marine Water
3	Ground
4	Air

Table 6. B.C. MELP waste type codes and descriptions.

Waste Type Table	
CODE	DESCRIPTION
1	Process
2	Cooling
3	Storm
4	STP
5	Leachate

Table 7. B.C. MELP site type codes and descriptions.

Site Type Table	
CODE	DESCRIPTION
01	Ambient or background air
03	Combined Sewer
05	Ditch or Culvert
07	Estuarine
09	In Plant
11	Irrigation Spray
13	Lake or Pond
15	Landfill
17	Marine
19	Outfall
21	River, Stream or Creek
23	Seepage or Seepage Pools
25	Snow Pack
27	Spring or Hot Spring
29	Stack
31	Storm Sewer
33	Well
35	Infiltration Pond
36	Tile Field
37	Septic Tank
38	Monitoring Well
39	Storage

Table 8. Parameter codes, descriptions, units, and upper limits.

Parameter Table			
CODE	DESCRIPTION	UNITS	UPPER LIMIT
D030	1,2 Dichloro ethane	ug/L	500
B022	1,2 Dichlorobenzene	ug/L	20000
P030	1,2 Dichloropropane	ug/L	500
T032	2,4,5-TP	ug/L	500
D041	2,4-D	ug/L	100
D044	2,4-D BEE	ug/L	20000
D050	2,4 Dichlorophenol	ug/L	20000
T039	3Chloroguaiacd13,4,5	ug/L	20000
G002	41-G	ug/L	20000
T063	4Chl2BFuran-2,3,7,8	pg/L	20000
T061	4Chl2BenDiox-2,3,7,8	pg/L	20000
T060	4ChlDibenzodioxin	pg/L	20000
T062	4Chldibenzofuran	pg/L	20000
T036	4Chlorophenol2,3,4,5	ug/L	20000
T037	4Chlorophenol2,3,4,5	ug/L	20000
T038	4Chlorophenol2,3,4,6	ug/L	20000
P043	5Chl2Bfuran1,2,3,7,8	pg/L	20000
P044	5Chl2BFuran2,3,4,7,8	pg/L	20000
P040	5Chl2BenDiox1,2,3,7,8	pg/L	20000
P041	5Chldibenzodioxin	pg/L	20000
P042	5Chldibenzofuran	pg/L	20000
H011	6Chl2BDiox1,2,3,4,7,8	pg/L	20000

Parameter Table			
CODE	DESCRIPTION	UNITS	UPPER LIMIT
H012	6Chl2BDiox1,2,3,4,78	pg/L	20000
H013	6Chl2BDiox1,2,3,7,89	pg/L	20000
H017	6Chl2BFuran1,2,3,478	pg/L	20000
H018	6Chl2BFuran1,2,3,678	pg/L	20000
H019	6Chl2BFuran2,3,4,678	pg/L	20000
H010	6Chldibenzodioxin	pg/L	20000
H016	6Chldibenzofuran	pg/L	20000
H020	6Chl2BFuran1,2,3,789	pg/L	20000
H015	6Chl2BDiox1,2,3,4678	pg/L	20000
H023	7Chl2BFuran1,2,3,4789	pg/L	20000
H022	7Chl2dFuran1,2,3,4678	pg/L	20000
H014	7ChlDibenzodioxin	pg/L	20000
H021	7Chldibenzofuran	pg/L	20000
O101	8Chldibenzodioxin	pg/L	20000
O102	8Chldibenzofuran	pg/L	20000
A001	AMPA (pesticide)	ug/L	20000
A030	Abietic Acid	mg/L	10000
PA01	Acenaphthene	ug/L	20000
PA02	Acenaphthylene	ug/L	20000
A007	Acephate (pesticide)	ug/L	20000
AEHS	Acid Extrctble Herbs (pes	ug/L	20000
0132	Acidity pH 4.5	mg/L	500
0131	Acidity pH 8.3	mg/L	500

Parameter Table			
CODE	DESCRIPTION	UNITS	UPPER LIMIT
AC83	Acidity to pH 8.3	mg/L	500
AC-F	Acidity:Free	mg/L	500
AC-T	Acidity:Total	mg/L	500
AOX-	Adsorb Org: Halides	mg/L	2000
A040	Aldehydes (formaldehyde)	mg/L	500
A003	Aldicarb	ug/L	100
A002	Aldrin	ug/L	10000
D102	Alkalinity 4.5/4.2	mg/L	500
1102	Alkalinity Diss. 4.5	mg/L	500
0101	Alkalinity Phen. 8.3	mg/L	500
0102	Alkalinity Total 4.5	mg/L	500
AK-T	Alkalinity Total	mg/L	500
Al-T	Aluminum	mg/L	20000
Al-D	Aluminum Dissolved	mg/L	10000
Al-I	Aluminum-Insoluble	mg/L	10000
Al-S	Aluminum-Soluble	mg/L	10000
NH3-	Ammonia	mg/L	100
NH4-	Ammonium	mg/L	50
2108	Ammonium Chloride	mg/L	20000
NH4A	Ammonium-1st Step	mg/L	20000
A029	Amyl OH	mg/L	20000
PA03	Anthracene	ug/L	20000
Sb-T	Antimony	mg/L	10000

Parameter Table			
CODE	DESCRIPTION	UNITS	UPPER LIMIT
Sb-D	Antimony Dissolved	mg/L	10000
Sb25	Antimony-125	mg/L	10000
SbIA	Antimony-1st Step	mg/L	10000
Sb-I	Antimony Insoluble	mg/L	10000
SbSA	Antimony-S 1st Step	mg/L	10000
Sb-S	Antimony-Soluble	mg/L	10000
SbTA	Antimony-T/HV Step A	mg/L	10000
FA07	Arachidic (resin acid)	mg/L	10000
A017	Aroclor 1242	ug/L	10000
A021	Aroclor 1254	ug/L	10000
A022	Aroclor 1260	ug/L	10000
As-T	Arsenic	mg/L	20000
As-D	Arsenic Dissolved	mg/L	10000
As-E	Arsenic Extractable	mg/L	10000
AsIA	Arsenic-I 1st Step	mg/L	10000
As-I	Arsenic Insoluble	mg/L	10000
AsSA	Arsenic-S 1st Step	mg/L	10000
AsTA	Arsenic-T/HV Step A	mg/L	10000
FIBR	Asbestos		
A016	Atrazine	ug/L	20000
A008	Azinphos Methyl	ug/L	10000
Ba-T	Barium	mg/L	10000
Ba-D	Barium Dissolved	mg/L	10000

Parameter Table			
CODE	DESCRIPTION	UNITS	UPPER LIMIT
FA08	Behenic	ug/L	20000
B003	Benomyl	ug/L	20000
B020	Benzene	ug/L	500
PA04	Benzo(a) anthracene	ug/L	20000
PA05	Benzo(a) pyrene	ug/L	20000
PA06	Benzo(b) fluoranthene	ug/L	20000
PA17	Benzo(b+k) fluoranthene	ug/L	20000
PA07	Benzo(ghi) perylene	ug/L	20000
PA08	Benzo(k) fluoranthene	ug/L	20000
Be-T	Beryllium	mg/L	10000
Be-D	Beryllium Dissolved	mg/L	10000
0150	Bicarbonate	mg/L	5000
DMGC	Bio. LC50:Daph.Magna	%	101
0461	Bio. LC50:Rainbow Tr	%	101
DMGT	Bio. LT50:Daph.Magna	h	100
0459	Bio. LT50:Rainbow Tr	h	100
DMGX	Bio.21 d.Chr:D.Magna	%	101
1416	Bioassay LC50(Salmon)	%	101
0463	Bioassay LT50	h	100
0464	Bioassay LT50 pH Adj	h	100
2461	Bioassay (Pass/Fail)	%	101
0115	Biochemical Oxygen Demand	mg/L	5000
P009	Bis(2ethylhex)Phthal	ug/L	20000

Parameter Table			
CODE	DESCRIPTION	UNITS	UPPER LIMIT
Bi-T	Bismuth	mg/L	2000
Bi-D	Bismuth Dissolved	mg/L	1000
B--T	Boron	mg/L	2000
B--D	Boron Dissolved	mg/L	1000
EF15	Brewery Effluent	n/a	
B012	Bromodichloromethane	ug/L	20000
B013	Bromoform	ug/L	20000
P013	ButylBenzyl Phthalat	ug/L	20000
Cd-T	Cadmium	mg/L	2000
Cd-D	Cadmium Dissolved	mg/L	1000
Cd-E	Cadmium Extractable	mg/L	1000
CdIA	Cadmium-I 1st Step	mg/L	1000
Cd-I	Cadmium-Insoluble	mg/L	1000
CdSA	Cadmium-S 1st Step	mg/L	1000
Cd-S	Cadmium-Soluble	mg/L	1000
CdTA	Cadmium-T/HV Step A	mg/L	1000
Ca-T	Calcium	mg/L	10000
Ca-D	Calcium Dissolved	mg/L	10000
Ca-S	Calcium-Soluble	mg/L	10000
C005	Captain	ug/L	10000
EF19	Car & Truck Wah Op.	n/a	
C006	Carbamate	ug/L	10000
C001	Carbaryl	ug/L	20000

Parameter Table			
CODE	DESCRIPTION	UNITS	UPPER LIMIT
1124	Carbon Diss Inorg.	mg/L	20000
1103	Carbon Diss Organic	mg/L	10000
CO--	Carbon Monoxide	mg/m3	1000000
0124	Carbon Tot Inorganic	mg/L	10000
C--T	Carbon Total	mg/L	20000
0103	Carbon Total Organic	mg/L	10000
C034	Carbon tetrachloride	ug/L	20000
0149	Carbonate	mg/L	50000
C007	Carbophenthion	ug/L	200000
Cs34	Cesium-134	bq/L	10000
Cs37	Cesium-137	bq/L	10000
0116	Chemical Oxygen Dem.	mg/L	10000
1104	Chloride Dissolved	mg/L	10000
0104	Chloride Total	mg/L	10000
CISA	Chloride-S 1st Step	mg/L	10000
Cl-S	Chloride-Soluble	mg/L	10000
Cl2-	Chlorine	mg/L	10000
2016	Chlorine Dem. Free	mg/L	10000
3016	Chlorine Dem. Total	mg/L	10000
C102	Chlorine Dioxide	mg/L	5000
0016	Chlorine Res:Free	mg/L	100
1016	Chlorine Res:Total	mg/L	100
C010	Chlorobenzene	ug/L	20000

Parameter Table			
CODE	DESCRIPTION	UNITS	UPPER LIMIT
C050	Chlorodehydroabietic	mg/L	10000
C033	Chlorodibromomethane	ug/L	20000
C032	Chloroform	ug/L	20000
C020	Chlorophenols	ug/L	20000
0143	Chlorophyll A	mg/L	500
C016	Chlorothalonil (pesticide	mg/L	500
Cr-T	Chromium	mg/L	10000
Cr-D	Chromium Dissolved	mg/L	10000
COAL	Coal	n/a	
Co-T	Cobalt	mg/L	1000
Co-D	Cobalt Dissolved	mg/L	1000
Co60	Cobalt-60	bq/L	10000
0450	Coliform - Fecal	#/100 mL	100000
0451	Coliform - Total	#/100 mL	10000000
COLI	Coliform Result	#/100 mL	100000
0001	Colour Apparent	Rel. Unit	1000
1052	Colour S./W. Diss.	Rel. Unit	500
0024	Colour TAC	Rel. Unit	500
0002	Colour True	Rel. Unit	500
Cu-T	Copper	mg/L	50000
Cu-D	Copper Dissolved	mg/L	30000
Cu-E	Copper Extractable	mg/L	30000
CuIA	Copper-I 1st Step	mg/L	30000

Parameter Table			
CODE	DESCRIPTION	UNITS	UPPER LIMIT
Cu-I	Copper-Insoluble	mg/L	30000
CuSA	Copper-S 1st Step	mg/L	50000
Cu-S	Copper-Soluble	mg/L	30000
CuTA	Copper-T/HV Step A	mg/L	10000
PA09	Crysene	ug/L	20000
CYAN	Cyanate	mg/L	1000
1105	Cyanide Dissolved	mg/L	1000
0105	Cyanide S.A.D.	mg/L	1000
CN-T	Cyanide Total	mg/L	1000
0157	Cyanide WAD	mg/L	1000
C030	Cyclohexane	ug/L	20000
D025	DDD	ug/L	50
D023	DDE	ug/L	50
D026	DDT	ug/L	50
D052	Dehydroabietic Acid	mg/L	10000
P012	Di-n-Butyl Phthalate	ug/L	20000
P014	Di-n-Octyl Phthalate	ug/L	20000
D010	Dizainon	ug/L	100
PA10	Dibenzo(a,h) anthrace	ug/L	20000
B026	Dichlorobenzene-1,3	ug/L	20000
D062	Dichlorocatechols	ug/L	20000
D053	DichlorodehydroAbiet	mg/L	10000
D061	Dichloroguaiacol	ug/L	20000

Parameter Table			
CODE	DESCRIPTION	UNITS	UPPER LIMIT
M041	Dichloromethane	ug/L	20000
D060	Dichlorophenols	ug/L	20000
D064	Dichlorovanillins	ug/L	20000
D063	Dichloroveretrols	ug/L	20000
D022	Dieldrin	ug/L	1000
P011	Diethyl Phthalate	ug/L	20000
D001	Dimethoate	ug/L	20000
D011	Dimethyl Ether	ug/L	20000
P010	Dimethyl Phthalate	ug/L	20000
D020	Dioxins	pg/L	100
0660	Discharge Rate (flow)		
EF16	Distillery Effluent	n/a	
0147	E Coli	#/100 mL	10000
EF12	Egg Packing Plant	n/a	
EF13	Egg Processing Plant	n/a	
E040	Endosulfan I	ug/L	10000
E041	Endosulfan II	ug/L	10000
E042	Endosulfan Sulphate	ug/L	10000
E007	Endrin	ug/L	10000
0148	Enterococcus	#/100 mL	10000
E030	Esters	ug/L	20000
E001	Ethyl Alcohol	mg/L	1000
B021	Ethyl Benzene	ug/L	10000

Parameter Table			
CODE	DESCRIPTION	UNITS	UPPER LIMIT
E010	Ethyl Dichloride	mg/L	1000
E020	Ethylene Glycol	mg/L	1000
F030	Fensulothion	ug/L	10000
FBRC	Fiber Count (Pulp)		
EF07	Fish Farm Effluent	n/a	
EF08	Fish Hatchery Effl.	n/a	
EF09	Fish Processing Effl.	n/a	
0029	Floatable Solids		
F019	Floauzifop-butyl		
0018	Flow (Avg)		
1018	Flow (Rate)		
PA11	Fluoranthene	ug/L	20000
PA12	Fluorene	ug/L	20000
FREP	Fluoridat'n Indx Rpt		
FLRI	Fluoridat'n Index		
FLRA	Fluoridat'n Index		
1106	Fluoride Dissolved	mg/L	20
0106	Fluoride Total	mg/L	50
F-SA	Fluoride-S 1st Step	mg/L	20
F--S	Fluoride-Soluble	mg/L	20
F032	Fonofos	ug/L	20000
F010	Formaldehyde	mg/L	10000
EF11	Fruit & Veg. Proc.	n/a	

Parameter Table			
CODE	DESCRIPTION	UNITS	UPPER LIMIT
F001	Furans	pg/L	1000
GCMS	GCMS Scan	n/a	
Ga-T	Gallium	mg/L	1000
G001	Glyphosate	mg/L	1000
EF04	Gravel Washing Effl.	n/a	
1292	Gross Alpha Diss.	bq/L	10
0292	Gross Alpha Total	bq/L	20
1107	Hardness Dissolved	mg/L	5000
0107	Hardness Total	mg/L	10000
H001	Heptachlor	ug/L	1000
H002	Heptachlor Epoxide	ug/L	1000
HCSN	Hydrocarbon Scan	n/a	
HC-T	Hydrocarbon Total	mg/L	20000
HC1-	Hydrogen Chloride	mg/L	10000
HCN-	Hydrogen Cyanide	mg/L	10000
HF--	Hydrogen Fluoride	mg/L	10000
H2O2	Hydrogen Peroxide	mg/L	10000
H2S-	Hydrogen Sulfide	mg/L	10000
PA13	Indeno(1,2,3-cd)pyre	ug/L	10000
In-T	Indium	mg/L	20000
I131	Iodine-131	bq/L	50
I003	Iprodione	mg/L	1000
Fe-T	Iron	mg/L	20000

Parameter Table			
CODE	DESCRIPTION	UNITS	UPPER LIMIT
Fe-D	Iron Dissolved	mg/L	20000
Fe-E	Iron Extractable	mg/L	10000
Fe-I	Iron-Insoluble	mg/L	10000
Fe-S	Iron-Soluble	mg/L	10000
I004	Isopimaric Acid	mg/L	10000
I001	Isopropanol	ug/L	500
P024	K Amul Xanthate	mg/L	1000
EF18	Laundromat Effluent	n/a	
FA01	Lauric Acid	mg/L	10000
Pb-T	Lead	mg/L	10000
Pb-D	Lead Dissolved	mg/L	5000
Pb-E	Lead Extractable	mg/L	5000
PbIA	Lead-I 1st Step	mg/L	5000
Pb-I	Lead_Insoluble	mg/L	5000
PbSA	Lead-S 1st Step	mg/L	5000
Pb-S	Lead-Soluble	mg/L	5000
PbTA	Lead-T/HV Step A	mg/L	5000
L003	Levo Pimaric Acid	mg/L	10000
FA09	Lignoceric	mg/L	10000
L002	Lindane	mg/L	1000
FA05	Linoleic	mg/L	10000
LIPI	Lipids	mg/L	2000
Li-T	Lithium	mg/L	2000

Parameter Table			
CODE	DESCRIPTION	UNITS	UPPER LIMIT
Li-D	Lithium Dissolved	mg/L	2000
X003	M,P-Xylene	ug/L	20000
M029	MIBC	mg/L	500
M030	MIBK	mg/L	500
Mg-T	Magnesium	mg/L	3000
Mg-D	Magnesium Dissolved	mg/L	2000
Mg-S	Magnesium-Soluble	mg/L	2000
M001	Malathion	ug/L	20000
Mn-T	Manganese	mg/L	5000
Mn-D	Manganese Dissolved	mg/L	1000
Mn-E	Manganese Extractable	mg/L	1000
EF06	Meat & Poultry Proc.	n/a	
Hg-T	Mercury	ug/L	100
Hg-D	Mercury Dissolved	ug/L	50
Hg-E	Mercury Extractable	ug/L	50
Hg-I	Mercury-Insoluble	ug/L	50
Hg-S	Mercury-Soluble	ug/L	50
HgTA	Mercury-T 1st Step	ug/L	100
EF22	Metal Ores Proces	n/a	
M002	Methamidophos	mg/L	1000
CH4-	Methane	ug/L	20000
M020	Methanol	ug/L	20000
M015	Methiocarb	ug/L	10000

Parameter Table			
CODE	DESCRIPTION	UNITS	UPPER LIMIT
M016	Methoxychlor	ug/L	10000
M022	Methyl Chloroform	ug/L	500
M017	Methyl Mercaptan	mg/L	100
M018	Methyl Parathion		
M042	Methylene Chloride	ug/L	10000
M003	Mevinphos	ug/L	20000
0458	Microtox EC50 15 Min.	%	101
0457	Microtox EC50 5 Min.	%	101
EF10	Milk Proc. Effluent	n/a	
0025	Moisture	%	101
Mo-T	Molybdenum	mg/L	10000
Mo-D	Molybdenum Dissolved	mg/L	5000
Mo-E	Molybdenum Extractbl	mg/L	5000
M052	Monochlorocatechols	ug/L	10000
M051	Monochloroguaicols	ug/L	10000
M050	Monochlorophenols	ug/L	5000
M053	Monochlorovanillins	ug/L	10000
FA02	Myristic	mg/L	10000
PA14	Naphthalene	ug/L	5000
N005	Neoabietic Acid	mg/L	10000
Ni-T	Nickel	mg/L	10000
Ni-D	Nickel Dissolved	mg/L	10000
Nb-T	Niobium	mg/L	1000

Parameter Table			
CODE	DESCRIPTION	UNITS	UPPER LIMIT
NO3A	Nitrate-S 1st Step	mg/L	10000
NO3-	Nitrate-Soluble	mg/L	10000
HNO3	Nitric Acid		
L111	Nitro. Diss (NO2) LL	mg/L	1000
L109	Nitro. Diss (NO2+3) LL	mg/L	200
1108	Nitrogen Amm. Diss (N)	mg/L	50
0108	Nitrogen Amm. Total	mg/L	100
1113	Nitrogen Kjel. Diss (N)	mg/L	500
0113	Nitrogen Kjel. Tot (N)	mg/L	1000
0109	Nitrogen NO2 + NO3	mg/L	10000
1111	Nitrogen NO2 Diss (N)	mg/L	1500
0111	Nitrogen NO2 Total	mg/L	1000
1110	Nitrogen NO3 Diss (N)	mg/L	500
0110	Nitrogen NO3 Total	mg/L	1000
1109	Nitrogen NO3+NO2 Diss	mg/L	500
0112	Nitrogen Organic-Tot	mg/L	100
NOx-	Nitrogen Oxides	mg/m3	1000000
0114	Nitrogen Total	mg/L	500
1114	Nitrogen Total (Diss)	mg/L	200
C002	O-Xylene	ug/L	50000
X002	O-Xylene	ug/L	50000
0030	Odour		
0003	Oil & Grease	mg/L	2000

Parameter Table			
CODE	DESCRIPTION	UNITS	UPPER LIMIT
FA04	Oleic/Linoleic	mg/L	10000
OCPS	Organo-Chlorines	ug/L	20000
OPPS	Organo-phosphorus	mg/L	5000
0039	Oxid. Red. Potential	mV	
0014	Oxygen Dissolved	mg/L	20
O3--	Ozone	mg/m3	1000000
PC42	PCB 1242	ug/L	50
PC48	PCB 1248	ug/L	50
PC54	PCB 1254	ug/L	50
PC60	PCB 1260	ug/L	50
P019	PCB's - Total	ug/L	50
PA03	Palmitic	mg/L	10000
P001	Parathion	ug/L	20000
P002	Parathion Methyl	ug/L	20000
003K	Part. Size 10 Mesh		
003C	Part. Size 100 Mesh		
003D	Part. Size 140 Mesh		
0033	Part. Size 16 Mesh		
003E	Part. Size 200 Mesh		
003L	Part. Size 230 Mesh		
003F	Part. Size 270 Mesh		
003A	Part. Size 30 Mesh		
003I	Part. Size 32 Mesh		

Parameter Table			
CODE	DESCRIPTION	UNITS	UPPER LIMIT
003G	Part. Size 400 Mesh		
003M	Part. Size 4000 Mesh		
003B	Part. Size 50 Mesh		
003J	Part. Size 9 Mesh		
003H	Part. Size >400 Mesh		
003N	Part. Size >4000 Mesh		
P022	Pentachlorophenol	ug/L	20000
P050	Perchloroethylene	ug/L	20000
PEST	Pesticides	ug/L	
EF24	Petroleum Bulk Stor.	n/a	
H009	Petroleum Distillate	n/a	
0146	Phaeophytin A		
PA15	Phenanthrene	ug/L	5000
0117	Phenols	ug/L	20000
P003	Phosmet	ug/L	10000
P04A	Phosphate-S 1st Step	mg/L	10000
PO4-	Phosphate-Soluble	mg/L	10000
L118	Phosphor. Orth. Dis. LL	mg/L	10000
1118	Phosphorous Ort. Dis-P	mg/L	10000
0118	Phosphorous Ortho	mg/L	10000
PPer	Phosphorous Peroxide	mg/L	10000
PPIA	Phosphorous Tot. Ins. A	mg/L	10000
PP-A	Phosphorous Tot. Insol.	mg/L	10000

Parameter Table			
CODE	DESCRIPTION	UNITS	UPPER LIMIT
PP-S	Phosphorous Tot. Sol.	mg/L	10000
PPSA	Phosphorous Tot. Sol. A	mg/L	10000
P--D	Phosphorous Tot. Diss.	mg/L	10000
P--T	Phosphorous Total	mg/L	10000
PP-T	Phosphorous Total A	mg/L	10000
P025	Pimaric Acid	mg/L	10000
P007	Peperonyl Butoxide		
EF05	Placer Gold Gravel Wsh.	n/a	
EF23	Plywood & Veneer	n/a	
PAH-	Polychlo. Hydrocarbon	ug/L	500
P023	Polychlor. Biphenyls	ug/L	50
K--T	Potassium	mg/L	1000
K--D	Potassium Dissolved	mg/L	500
K--S	Potassium-Soluble	mg/L	500
0470	Production Quant.		
P015	Propazine	ug/L	20000
PA16	Pyrene	ug/L	500
Ra-D	Radium Dissolved	bq/L	100
Ra-T	Radium Total	bq/L	100
Ra26	Radium-226	bq/L	0
FAC2	Ratio-Alk. vs. Cond.		
EF20	Ready Mix Truck Wash	n/a	
0007	Res. Filterable-0.45u	mg/L	2000

Parameter Table			
CODE	DESCRIPTION	UNITS	UPPER LIMIT
RF-F	Res. Fixed Filterable	mg/L	2000
007H	Res. Fixed Filterable	mg/L	2000
0009	Residue Fixed Nfilt.	mg/L	2000
0008	Residue Nonfilt.	mg/L	2000
0032	Residue Tot. Volatile	mg/L	2000
0005	Residue Total	mg/L	5000
0006	Residue Total Fixed	mg/L	2000
0010	Residue Vol-Nonfilt.	mg/L	2000
0128	Resin Acids	mg/L	10000
R001	Rotenone	mg/L	1000
SWEP	SW Waste Extr. Proc.		
0130	Salinity	mg/L	500
SALM	Salmonella		
S006	Sandaraco Pimaric Ac.	mg/L	10000
Se-T	Selenium	mg/L	20000
Se-D	Selenium Dissolved	mg/L	10000
Se-E	Selenium Extractable	mg/L	10000
EF03	Septic Tank Pumb/STP Sldg	n/a	
EF02	Septic Tank Effluent	n/a	
0023	Settleable Solids		
EF01	Sewage Sludge	n/a	
0120	Silica Reactive	mg/L	3000
1120	Silica Reactive Diss.	mg/L	2000

Parameter Table			
CODE	DESCRIPTION	UNITS	UPPER LIMIT
Si-T	Silicon	mg/L	2000
Si-D	Silicon Dissolved	mg/L	1000
SiF4	Silicon Tetra-F	mg/L	1000
Ag-T	Silver	mg/L	1000
Ag-D	Silver Dissolved	mg/L	500
S001	Simzine	mg/L	20000
Na-t	Sodium	mg/L	10000
NaBA	Sodium Borate	mg/L	10000
NaCA	Sodium Chlorate	mg/L	10000
Na-D	Sodium Dissolved	mg/L	5000
NaOH	Sodium Hydroxide	mg/L	10000
NaSi	Sodium Silicate	mg/L	5000
NaSA	Sodium-S 1st Step	mg/L	10000
Na-S	Sodium-Soluble	mg/L	5000
EF14	Soft-Drink Bottling	n/a	
SSHS	Solvent Soluble Herb	mg/L	1000
0011	Specific Conductance	usie/cm	
011P	Specific Conductance	usie/cm	
FA06	Stearic	mg/L	20000
0454	Streptococcus -Fecal	#/100mL	50000
Sr-T	Strontium	mg/L	20000
Sr-D	Strontium Dissolved	mg/L	10000
S010	Styrene	ug/L	500

Parameter Table			
CODE	DESCRIPTION	UNITS	UPPER LIMIT
0121	Sulphate	mg/L	5000
1121	Sulphate Dissolved	mg/L	5000
SO4A	Sulphate-S 1st Step	mg/L	5000
SO4-	Sulphate-Soluble	mg/L	5000
1125	Sulphide Dissolved	mg/L	25
0125	Sulphide Total	mg/L	300
SO2-	Sulphur Dioxide	mg/m3	1000000
S--D	Sulphur Dissolved	mg/L	300
S--T	Sulphur Total	mg/L	300
Su2-	Sulphur:Bivalent	mg/L	100
0138	Sulphite	mg/L	25
SA--	Sulphuric Acid	mg/L	
0122	Surfactants	mg/L	5000
1122	Surfactants Dissolved	mg/L	5000
B024	TCMT Benzothiazole		
1123	Tannin & Lignin Diss.	mg/L	50000
0123	Tannin & Lignin Total	mg/L	100000
Te-D	Tellerium Dissolved	mg/L	5000
Te-T	Tellerium	mg/L	2000
0013	Temperature	deg C	60
T026	Tetachlorcatechols	ug/L	20000
T030	Tetachloroethylene	ug/L	20000
T024	Tetachloroguaiacol	ug/L	20000

Parameter Table			
CODE	DESCRIPTION	UNITS	UPPER LIMIT
T020	Tetrachlorophenols	ug/L	20000
T028	Tetrachloroveretrols	ug/L	20000
Tl-T	Thallium	mg/L	10000
Tl-D	Thallium Dissolved	mg/L	5000
THIO	Thiocyanate	mg/L	1000
TH-T	Thorium	ug/L	5000
Sn-T	Tin	mg/L	10000
Sn-D	Tin Dissolved	mg/L	5000
Ti-T	Titanium	mg/L	50
Ti-D	Titanium Dissolved	mg/L	10
T001	Toluene	ug/L	500
T010	Toluenedisocyanate	ug/L	500
TRS-	Total Reduced Sulfur		
T014	Toxaphene	ug/L	10000
T050	Triazines	ug/L	500
T051	Tributyltins	ug/L	20000
T034	Triclorophenol2,3,5	ug/L	20000
B027	Trichlorobenzene-1,4	ug/L	500
T041	Trichlorocatechol345	ug/L	20000
T025	Trichlorocatechols	ug/L	20000
T040	Trichloroethane	ug/L	500
T029	Trichloroethylene	ug/L	500
M040	Trichlorofluorometha	ug/L	500

Parameter Table			
CODE	DESCRIPTION	UNITS	UPPER LIMIT
T022	Trichloroguaiacol	ug/L	20000
M043	Trichloromethane	ug/L	500
T033	Trichlorophenol2,3,4	ug/L	500
T035	Trichlorophenol2,3,6	ug/L	500
T021	Trichlorophenols	ug/L	500
T027	Trichloroveretrols	ug/L	500
T031	Trichlorpyr	ug/L	500
T019	Trichlorsyringols	ug/L	500
T015	Trifluralin	ug/L	500
B023	Trimethyl Benzene	ug/L	500
H-3-	Tritium	bq/L	50
0015	Turbidity	ntu	1000
EF25	Uncontam. Cooling H2O	n/a	
U--T	Uranium	ug/L	5000
U--D	Uranium Dissolved	ug/L	1000
V--T	Vanadium	mg/L	2000
V--D	Vanadium Dissolved	mg/L	1000
VOC-	Volatile Org. Cmp.	ug/L	20000
0021	Water Level	m	20000
0041	Water Velocity		
EF17	Winery Effluent	n/a	
X001	Xylene	ug/L	50000
Zn-T	Zinc	mg/L	1000

Parameter Table			
CODE	DESCRIPTION	UNITS	UPPER LIMIT
Zn-D	Zinc Dissolved	mg/L	500
Zn-E	Zinc-Extractable	mg/L	500
ZnIA	Zinc-I 1st Step	mg/L	1000
Zn-I	Zinc-Insoluble	mg/L	500
ZnSA	Zinc-S 1st Step	mg/L	1000
Zn-S	Zinc-Soluble	mg/L	500
ZnTA	Zinc-T/HV Step A	mg/L	1000
Zr-T	Zirconium	mg/L	500
Zr-D	Zirconium Dissolved	mg/L	500
C011	alpha-Chlordane	ug/L	5000
C012	gamma-Chlordane	ug/L	5000
D024	o,p'DDT	ug/L	10
0004	pH	pH units	15
pH--	pH (rain)	pH units	15
DSEW	Domestic Sewage	n/a	

Appendix E

Import File Format

Structure for database : SIMS.DBF

Number of data records : 2598

Last updated : 12/30/92 at 8:33

Field	Field name	Type	Width	Dec
1	PER_NO	Numeric	5	
2	PER_VER	Numeric	2	
3	REG_COD	Character	2	
4	OFF_COD	Character	2	
5	DIS_COD	Character	2	
6	FIL_TYP	Character	1	
7	WAS_TYP	Character	1	
8	FIL_STA	Character	1	
9	EXP_DAT	Numeric	8	
10	CLI_NAM	Character	50	
11	LOCAT	Character	50	
12	LEG_ADD	Character	150	
13	MAI_ADD	Character	150	
14	PHO_NUM	Character	10	
15	FAX_NUM	Character	10	
16	NTS_NUM	Character	6	
17	LAT	Character	7	
18	LONG	Character	7	
19	SIC_COD	Character	5	
20	PROD_CAP	Numeric	8	
21	UNITS	Character	15	
22	WASTE_NO	Numeric	2	
23	SIT_TYP	Character	2	
24	DISC_TO	Character	1	
25	REL_COD	Character	1	
26	PAR_COD	Character	4	
27	DIS_MIN	Numeric	13	4
28	DIS_MAX	Numeric	13	4
29	DIS_AVG	Numeric	13	4
30	UNIT_COD	Character	8	
31	DIS_TIM	Numeric	3	
32	DIS_DUR	Numeric	3	
33	DISD_UNI	Character	3	
34	DIS_FRQ	Numeric	3	
35	DISF_UNI	Character	3	
36	WAT_BOD	Character	40	
37	PER_DAT	Numeric	10	
**	Total **		615	