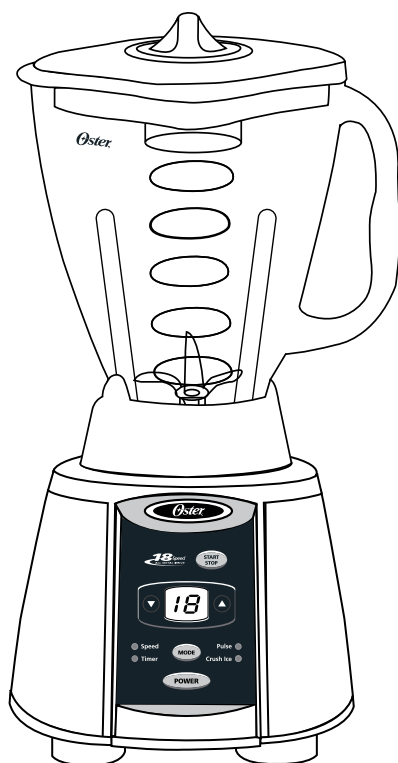
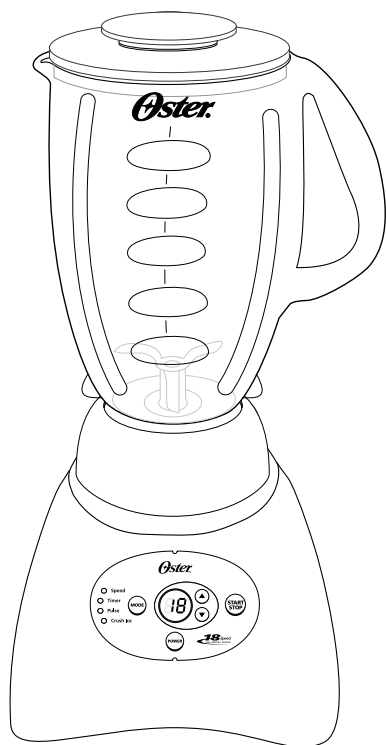


# Oster®

User Manual **DIGITAL BLENDER**  
Manual de Instrucciones **LICUADORA**

MODELS/MODELOS **OSTER® Digital Blender**



Visit us at [www.oster.com](http://www.oster.com)

P.N. 120761-100

# IMPORTANT SAFEGUARDS

When using electrical appliances, basic safety precautions should be followed, including the following:

## READ ALL INSTRUCTIONS BEFORE USE

- Unplug cord from outlet when not in use or before cleaning.
- To protect against risk of electrical shock, do not immerse the cord, plug or motor base in water or any other liquids.
- Do not let cord hang over edge of table or counter or touch hot surfaces.
- Never leave appliance unattended when in use.
- Close supervision is necessary when used near children.
- Avoid contact with moving parts. Keep hands and utensils out of jar while blending to prevent personal injury or damage to the blender. A rubber spatula may be used only when the blender is not running.
- The blade is sharp. Handle with care.
- Always put the lid on the jar before operating the blender.
- Do not blend boiling liquids in the blender.
- Do not operate any appliance with a damaged cord or plug, or after the appliance malfunctions or is dropped or damaged in any manner. Return the appliance to the nearest Authorized Sunbeam Appliance Service center for examination, repair or electrical or mechanical adjustment.
- Do not use outdoors or for commercial purposes; this appliance is for household use only.
- Use this appliance for its intended use as described in this manual. Do not use attachments that are not recommended by the manufacturer; they may cause injury.
- Always operate on a flat surface.
- Unplug the blender when it is not in use, before taking off or putting on parts and before cleaning.
- The use of attachments not made by OSTER®, including canning or ordinary jar and processing assembly parts, is not recommended by Sunbeam Products, Inc., and may cause injury to persons.

## THIS PRODUCT IS FOR HOUSEHOLD USE ONLY

The maximum rating marked on the product is based on the attachment that draws the greatest load. Other attachments may draw less power.

## POWER CORD INSTRUCTIONS

Please follow the instructions below to ensure the safe use of the power cord.

- This appliance is equipped with a polarized plug. This type of plug has one blade that is wider than the other. This plug will fit in a polarized outlet only one way. This is a safety feature intended to help reduce the risk of electrical shock. If you are unable to insert the plug into the outlet, contact a qualified electrician to replace the obsolete outlet. Do not attempt to defeat the safety purpose of the polarized plug by modifying the plug in any way.
- You may use an extension cord, if necessary, but be certain to follow these guidelines:
  - The marked electrical rating of the extension cord must be at least 120/127 volt, 60 Hz, 10A.
  - The extension must be arranged so that it will not drape over the countertop or tabletop, will not be within the reach of children and will not be tripped over.
- Do not pull, twist or otherwise abuse the power cord.

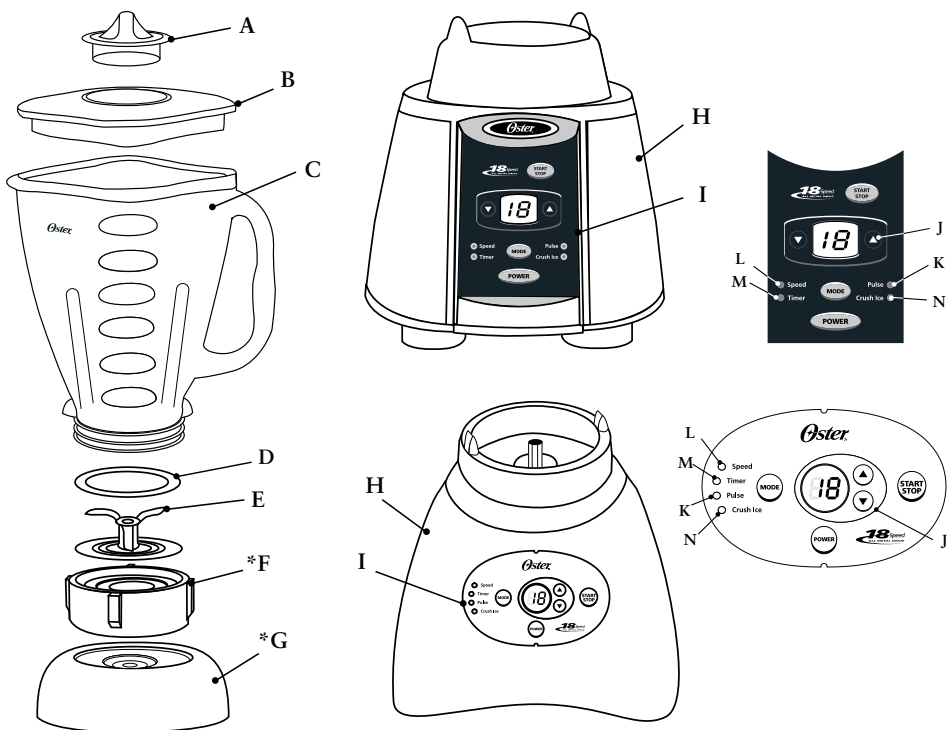
## SAVE THESE INSTRUCTIONS

# WELCOME

Congratulations on your purchase of an OSTER® Digital Blender!  
To learn more about OSTER® products, please visit us at [www.oster.com](http://www.oster.com)

## FEATURES OF YOUR BLENDER

- A.** Filler Cap to add ingredients while blending
- B.** Blender Lid
- C.** Jar – Your Oster® Blender includes one of the following:
  - 5-Cup Dishwasher-Safe/Scratch-Resistant Glass Jar
  - 6-Cup Dishwasher-Safe/Scratch-Resistant Glass Jar
  - 6-Cup Break-Resistant plastic jar
- D.** Sealing Ring for tight seal
- E.** Ice Crush Blade pulverizes ice for smooth frozen drinks
- \*F.** Threaded Jar Nut (unit will include Jar Nut OR Jar Skirt)
- \*G.** Threaded Jar Skirt (unit will include Jar Nut OR Jar Skirt)
- H.** Powerful Motor with ALL METAL DRIVE System for extra durability
- I.** Control Panel
- J.** Mode Adjuster – Increase/decrease “TIMER, SPEEDS” and “PULSE” with directional arrows
- K.** “PULSE” for precise blending control
- L.** “SPEED” Selection
- M.** “TIMER” mode - Set blender for up to 60 seconds for easy hands free operation
- N.** “CRUSH ICE” Mode - is the blender’s highest setting



\* Note: Blender models will feature a threaded jar nut (F) OR a threaded jar skirt (G).

# USING YOUR BLENDER

18 Speeds

1	2	3	4	5	6	7	8	9	10	11	12	13	14	15	16	17	18		
PULSE	EASY CLEAN	SOUP	BABY FOOD	VEGGIE	SALSA	NUTS	BATTER	PULSE	JUICE	WHIP CREAM	SAUCES/DIPS	CHEESE	DRESSING	MILKSHAKE	COFFEE BEANS	SMOOTHIE	FROZEN DRINK	POWDER DRINK	ICE CRUSH

Clean blender according to the instructions in the “Cleaning and Storing Your Blender” section.

## Jar assembly:

1. Turn jar upside down so the small opening is at the top. (Figure 1)
2. Place sealing ring over jar opening. (Figure 1)
3. Place blade into jar. (Figure 2)

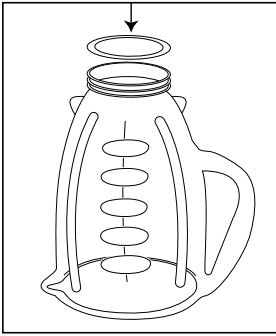


FIGURE 1

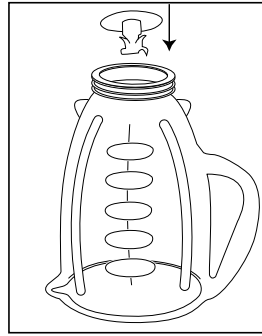


FIGURE 2

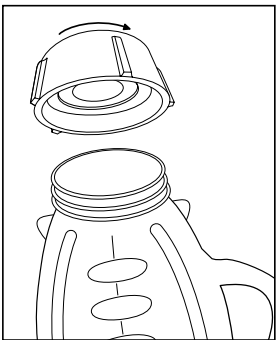


FIGURE 3

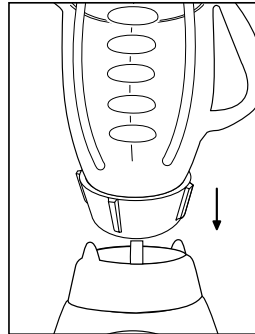


FIGURE 4

4. Place threaded jar nut or threaded jar skirt over blade and jar. (Note: If there are slots on top of collar, line them up with notches on jar.) Place the threaded jar nut or threaded jar skirt on jar and turn it clockwise to tighten. (Figure 3)
5. Place jar assembly onto base. (Figure 4)
6. Place ingredients into jar according to your recipe. For best results always add liquids when blending.
7. Place lid with filler cap on jar.
8. Plug the power cord into a 120 Volt AC electrical outlet.

# DIGITAL CONTROLS

## To use the “SPEED” mode:

1. Press the POWER button to turn the product on.
2. Confirm the Blender is set to the “SPEED” Mode - the red indicator light next to “SPEED” will be lit.
3. Press the Arrow “▲- (Up)” “▼- (Down)” to switch between speeds.
4. Put the ingredients into the jar.
5. Secure the lid and filler cap.
6. Press the START/STOP button to blend as desired, or you can use the TIMER for up to 60 seconds (see below). Pressing the POWER button stops the motor and turns the blender off.

(Note: This blender is programmed to turn the power off automatically if not used for a period of several minutes.)

## To use the “TIMER” mode:

1. Press the POWER button to turn the product on.
2. Set to desired speed, then press the MODE function button until the red indicator light next to “TIMER” is lit.
3. Press the Arrow “▲- (Up)” “▼- (Down)” to switch to desired time (in seconds). TIMER goes up to 60 seconds and is in increments of 5 seconds.
4. Press START/STOP to begin blending.
5. Once the program is finished, the product AUTOMATICALLY stops. Please note: You may press the “START/STOP” button to cancel the program at any time.

## To use the “PULSE” mode:

1. Press the POWER button to turn the product on.
2. Press MODE until PULSE red indicator light is lit.
3. Press the Arrow “▲- (Up)” “▼- (Down)” to switch to desired Pulse level.
4. Press and hold down START/STOP button for desired length of time. Release and allow blade to stop. Repeat cycle as desired.

## To use the “CRUSH ICE” mode:

1. Press the POWER button to turn the product on.
2. Press MODE until the red indicator light next to “CRUSH ICE” is lit.
3. Press the Arrow “▲- (Up)” “▼- (Down)” to switch to desired ice-crushing level.
4. Crush 6 ice cubes or approximately 2 cups of ice at a time.
5. Secure the lid and filler cap.

6. Press the START/STOP button to crush ice as desired.

(Note: This blender is programmed to turn the power off automatically if not used for a period of several minutes.)

## BLENDING TIPS

### Working with hot foods or liquids:

**(!!) WARNING:** When you work with **HOT FOODS**, remove the filler cap from the jar lid to vent steam. Partially cover the opening keeping hands and other exposed skin away from the lid opening to prevent possible burns.

**(!!) WARNING:** When you work with **HOT LIQUIDS**, remove the filler cap from the jar lid and start at a low speed, and gradually increase to a faster speed. Do not add liquid over the 4 cup (1L) level. Always keep hands and exposed skin away from steam.

- Put liquids in the jar first, unless a recipe says otherwise.
- Crushing ice: Crush 6 ice cubes or approximately 2 cups of ice at a time.
- Do not remove the lid while in use. Remove filler cap to add smaller ingredients. (*Figure 6*)
- Cut all firm fruits and vegetables, cooked meats, fish and seafood into pieces no larger than 1/2 inch (1.8 cm) to 1 inch (2.5 cm). Cut all kinds of cheeses into pieces no larger than 1/2 inch (1.8 cm).
- This blender has been designed to gently process foods when operating at low speeds. If blades do not rotate during operation, simply choose a higher speed.
- This blender will not mash potatoes, whip egg whites or substitute dairy toppings, mix stiff dough or grind raw meat.

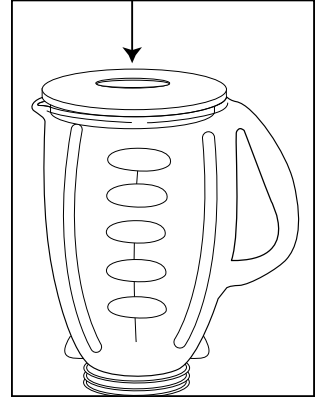


FIGURE 6

# PROCESSING FOODS IN BLENDER

<b>FOOD</b>	<b>PROCESSED QUANTITY</b>	<b>UNPROCESSED QUANTITY</b>	<b>SPECIAL INSTRUCTIONS</b>
Breadcrumbs	1/2 cup (125 ml)	1 slice, torn in 8 pieces	Pulse 1 – 4 times
Celery	3/4 cup (200 ml)	1 cup (250 ml) of 1 inch (2.5 cm) pieces	Pulse 2 – 3 times
Cheese, Cheddar	1 cup (250 ml)	1 cup (250 ml) of 1 inch (2.5 cm) pieces	Pulse 2 times
Cheese, Swiss	1 cup (250 ml)	1 cup (250 ml) of 1 inch (2.5 cm) pieces	Pulse 5 times
Cheese, Hard or Semi-Hard	1 cup (250 ml)	1 cup (250 ml) of 1 inch (2.5 cm) pieces	Chop continuously
Coffee Beans	1 cup (250 ml)	1 cup (250 ml)	Grind 45 seconds for percolators and 60 seconds for drip
Cookies, Wafer	1/2 cup (125 ml)	10 wafers	Pulse 3 times
Crackers, Graham	1/2 cup (125 ml)	8 crackers	Pulse 3 times
Peppers	2/3 cup (150 ml)	1 cup (250 ml)	Pulse 1 time
Meat, Boneless, Cooked	1 cup (250 ml)	1 cup (250 ml) of 1 inch (2.5 cm) pieces	Chop continuously
Nuts, almonds, peanuts, pecans, walnuts	1 cup (250 ml)	1 cup (250 ml)	Pulse 2 – 4 times

## CLEANING AND STORING YOUR BLENDER

**IMPORTANT: UNPLUG BEFORE CLEANING BASE and DO NOT IMMERSE THE BLENDER BASE IN WATER OR ANY OTHER LIQUIDS.** Use a damp, soft sponge with mild detergent to clean the outside of the blender base. All parts except for the blender base are dishwasher safe. Threaded jar bottom is top rack dishwasher safe **ONLY**. Place sealing ring in bottom basket of dishwasher. You can also wash the parts in warm, soapy water. Rinse well and dry.

## STORING YOUR BLENDER

After cleaning, reassemble blade to jar with sealing ring and threaded jar bottom. Store blender with cover ajar to prevent container odor.

## ***1 Year Limited Warranty***

Sunbeam Products, Inc. doing business as Jarden Consumer Solutions or if in Canada, Sunbeam Corporation (Canada) Limited doing business as Jarden Consumer Solutions (collectively “JCS”) warrants that for a period of one year from the date of purchase, this product will be free from defects in material and workmanship. JCS, at its option, will repair or replace this product or any component of the product found to be defective during the warranty period. Replacement will be made with a new or remanufactured product or component. If the product is no longer available, replacement may be made with a similar product of equal or greater value. This is your exclusive warranty. Do NOT attempt to repair or adjust any electrical or mechanical functions on this product. Doing so will void this warranty.

This warranty is valid for the original retail purchaser from the date of initial retail purchase and is not transferable. Keep the original sales receipt. Proof of purchase is required to obtain warranty performance. JCS dealers, service centers, or retail stores selling JCS products do not have the right to alter, modify or any way change the terms and conditions of this warranty.

This warranty does not cover normal wear of parts or damage resulting from any of the following: negligent use or misuse of the product, use on improper voltage or current, use contrary to the operating instructions, disassembly, repair or alteration by anyone other than JCS or an authorized JCS service center. Further, the warranty does not cover: Acts of God, such as fire, flood, hurricanes and tornadoes.

### **What are the limits on JCS's Liability?**

JCS shall not be liable for any incidental or consequential damages caused by the breach of any express, implied or statutory warranty or condition.

Except to the extent prohibited by applicable law, any implied warranty or condition of merchantability or fitness for a particular purpose is limited in duration to the duration of the above warranty.

JCS disclaims all other warranties, conditions or representations, express, implied, statutory or otherwise.

JCS shall not be liable for any damages of any kind resulting from the purchase, use or misuse of, or inability to use the product including incidental, special, consequential or similar damages or loss of profits, or for any breach of contract, fundamental or otherwise, or for any claim brought against purchaser by any other party.

Some provinces, states or jurisdictions do not allow the exclusion or limitation of incidental or consequential damages or limitations on how long an implied warranty lasts, so the above limitations or exclusion may not apply to you.

This warranty gives you specific legal rights, and you may also have other rights that vary from province to province, state to state or jurisdiction to jurisdiction.

### **How to Obtain Warranty Service**

In the U.S.A.

If you have any question regarding this warranty or would like to obtain warranty service, please call 1-800-334-0759 and a convenient service center address will be provided to you.

In Canada

If you have any question regarding this warranty or would like to obtain warranty service, please call 1-800-667-8623 and a convenient service center address will be provided to you.

In the U.S.A., this warranty is offered by Sunbeam Products, Inc. doing business as Jarden Consumer Solutions located in Boca Raton, Florida 33431. In Canada, this warranty is offered by Sunbeam Corporation (Canada) Limited, located at 20 B Hereford Street, Brampton, Ontario L6Y 0M1. If you have any other problem or claim in connection with this product, please write to the Consumer Service Department. PLEASE DO NOT RETURN THIS PRODUCT TO ANY OF THESE ADDRESSES OR TO THE PLACE OF PURCHASE.

Printed in U.S.A.











For product questions contact:  
Sunbeam Consumer Service

USA : 1.800.334.0759

Canada : 1.800.667.8623

[www.oster.com](http://www.oster.com)

©2008 Sunbeam Products, Inc., doing business as  
Jarden Consumer Solutions. All rights reserved.

In the U.S., distributed by Sunbeam, Products, Inc.,

doing business as Jarden Consumer Solutions, Boca Raton, FL 33431

In Canada, imported and distributed by Sunbeam Corporation (Canada) Limited,  
doing business as Jarden Consumer Solutions, Brampton (Ontario) L6Y 0M1.

YMI-103107

Para preguntas sobre los productos llame:  
Sunbeam Consumer Service

EE.UU. : 1.800.334.0759

Canadá : 1.800.667.8623

[www.oster.com](http://www.oster.com)

©2008 Sunbeam Products, Inc., operando bajo el nombre de  
Jarden Consumer Solutions. Todos los derechos reservados.

En los EE. UU., distribuido por Sunbeam Products, Inc.,

operando bajo el nombre de Jarden Consumer Solutions, Boca Raton, FL 33431

En Canadá, importado y distribuido por Sunbeam Corporation (Canada) Limited,  
operando bajo el nombre de Jarden Consumer Solutions, Brampton (Ontario) L6Y 0M1.

Printed in U.S.A.

Impreso en EE.UU