

TECHNICAL SPECIFICATIONS

MODEL PS-5
MAX. CAPACITY 5 kg, 10 lb, 160 oz
MIN. DIVISION 0.005 kg, 0.01 lb, 0.2 oz
MAX. TARE 5 kg, 10 lb, 160 oz

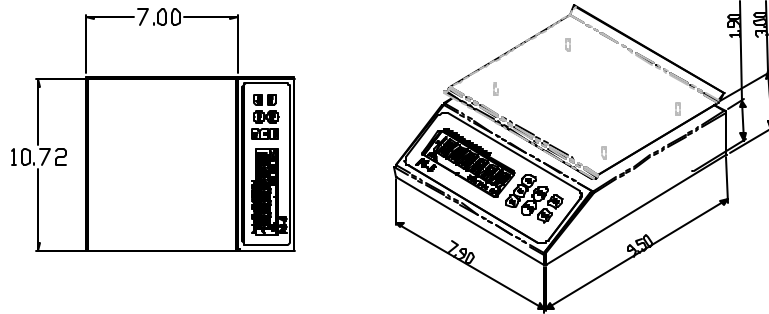
OPERATION TEMPERATURE RANGE
14 TO 104 °F (-10 TO 40°C)
STORAGE TEMPERATURE RANGE
-4 TO 122 °F (-20 TO 50°C)

AC/DC POWER SUPPLY :
OUTPUT 9 Vd.c. 500 mA.



APPROVED

DIMENSIONS



NOTE : THIS PRODUCT'S SERIAL NUMBER CAN BE FOUND UNDER THE PLATE HOLDER ON THE CABINET OF THE SCALE. WE SUGGEST THAT YOU WRITE DOWN THAT SERIAL NUMBER AND THE CORRESPONDING MODEL IN THE FOLLOWING BLANKS AND KEEP THEM AS PERMANENT PROOF OF YOUR ACQUISITION, TO HELP IN THE IDENTIFICATION IN CASE OF LOSS OR FURTHER CONSULTATIONS.

DISTRIBUTOR: _____

ADDRESS : _____

TELEPHONE _____

DATE OF PURCHASE: _____

MODEL: _____

SERIAL NUMBER: _____

**FABRICANTES DE BASCULAS TORREY
S.A. DE C.V.**



**ELECTRONIC SCALE
PS SERIES**



USER MANUAL

REVISION: 1.0

IMPORTANT:
BEFORE OPERATING THIS SCALE, PLEASE READ THIS MANUAL THOROUGHLY.

DEAR COSTUMER:

WE APPRECIATE YOUR PREFERENCE. YOU HAVE JUST ACQUIRED A TORREY ELECTRONIC SCALE, INTERNATIONAL DISTINGUISHED FOR ITS PRECISION AND QUALITY. WITHOUT DOUBT, WE ASSURE THAT YOU WILL BE PLENTY SATISFIED WITH YOUR NEW ACQUISITION.

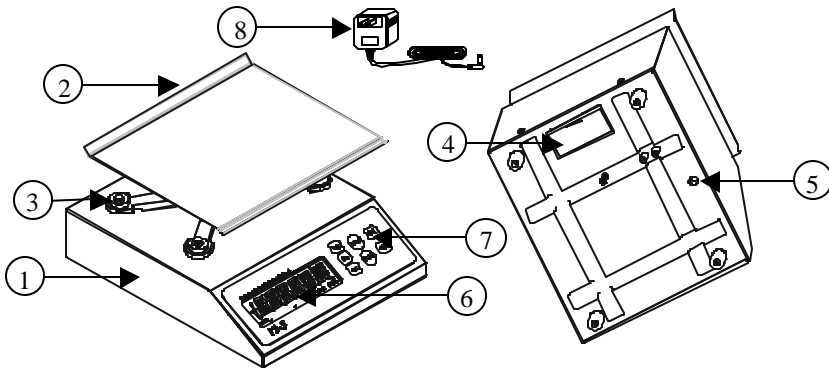
INTRODUCTION

THE ELECTRONIC SCALE PS-5 IS AN EASY USE PRODUCT. IT COULD BE USED IN THE PORTIONING FOR AN EXACT CONTROL IN THE WEIGH, SUPPORT IN NUTRITIONAL CONTROL, DIETETIC CONTROL AND A WITHOUT ENDED APPLICATIONS IN THE WEIGHT. IT HAS THE TARE FUCTION, USED WHEN YOU DON'T WANT TO TAKE INTO ACCOUNT THE RECIPIENT WEIGHT. IT HAS THE CAPABILITY OF INTERCHANGE THE UNITS FROM KILOGRAMS, POUNDS OR OUNCES, IT COULD BE EASY TRANSPORTED BECAUSE IT CAN WORK WITH A 9 VOLT BATTERY (NO INCLUDED), IT HAS A VOLTAGE SENSOR FOR THE BATTERY AND IT SHOWS TO THE USER IMPORTANT MESSAGES.

ELEMENT CHECK LIST

IN YOUR PURCHASE YOU SHOULD RECEIVE:

- PS-5 SCALE
- PLATE
- AC/DC ADAPTOR 120 VAC/9 VDC.
- USER MANUAL



PART IDENTIFICATION


- 1.- **CABINET:** MANUFACTURED IN STAINLESS STEEL RESISTANT TO CORROSION AND STROKES
- 2.- **PLATE:** ALSO MANUFACTURED IN STAINLESS STEEL WITH THE BORDER BENT AND ROUNDED.

MAINTENANCE AND CLEANING.

- DO NOT PUT OVERWEIGH OVER THE SCALE
- NEVER PRESS THE KEYBOARD WITH OBJECTS SUCH AS PENCILS, PENS, KNIVES, ETC.
- DO NOT DROP HARD THE PRODUCT TO BE WEIGHTED ON THE PLATE OF THE SCALE BECAUSE WITH THE TIME IT COULD DAMAGE THE LOAD CELL.
- DO NOT USE A FLOW OF WATER TO CLEAN YOUR SCALE. USE A DAMP RAG AND CLEAN EACH OF THIS COMPONENTS DAILY: PLATE, KEYBOARD.
- TO REMOVE OIL AND GREASY SUBSTANCES, USE A DRY AND CLEAN RAG, RUBBING THE DIRTY AREA SEVERAL TIMES.
- DO NOT USE DETERGENTS NOR CORROSIVE LIQUIDS WHILE CLEANING.

TROUBLESHOOTING GUIDE


PROBLEM	POSSIBLE CAUSE	SOLUTION
IT DOES NOT OPERATE	THERE IS NO ELECTRIC CURRENT	WITH A MULTIMETER, CHECK IF THERE IS ELECTRIC CURRENT IN THE OUTLETS.
	AC/DC POWER SUPPLY CABLE HAS A FALSE CONTACT.	CHECK THAT THE AC/DC POWER SUPPLY TERMINALS, IF IT IS POSSIBLE, CHECK WITH ANOTHER AC/DC POWER SUPPLY.
	LOW BATTERY	CONNECT THE AC/DC POWER SUPPLY IF THE SCALE OPERATES, THEN REPLACE THE BATTERY
THE SCALE SHOWS DIFFERENT WEIGHTS WHEN THE SAME PRODUCT IS WEIGHED SEVERAL TIMES.	MATERIAL UNDER THE PLATE HOLDER IS OBSTRUCTING THE CORRECT MOVEMENT	CHECK THAT THERE ARE NOT MATERIALS UNDER THE PLATE HOLDER. IF THERE ARE, REMOVE THEM AND CHECK THE OPERATION AGAIN

BUT IF YOU PRESS THE  KEY THE SCALE WILL CHANGE TO "kg" MODE AND YOU WILL SEE THE FOLLOWING IN THE VIEW FINDER



POWER OFF TIMER FUNCTION.

THIS FUNCTION IS PERMANENTLY ACTIVE WHEN THE SCALE IS WORKING WITHOUT THE AC/DC POWER SUPPLY CONNECTED INTO THE SCALE. IF THE SCALE IS NOT USED FOR A PERIOD OF TIME APPROXIMATE TO 15 MINUTES, IT WILL

AUTOMATICALLY TURN OFF. TO TURN ON THE SCALE AGAIN, JUST PRESS THE  KEY.

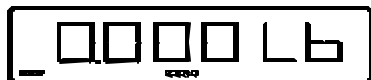
THE POWER OFF TIMER FUNCTION ALLOW YOU TO SAVE ELECTRICITY AVOIDING A QUICK BATTERY DISCHARGE.

BATTERY LIFE

THE PS-5 SCALE CAN BE CONTINUOUSLY USED FOR A PERIOD OF TIME OF 48 HOURS USING AN ALKALINE 9 VOLT BATTERY.

"LOW BATTERY" INDICATOR

WHEN THE DISPLAY SHOWS THE LOW BATTERY INDICATOR, THE BATTERY IS ALMOST OUT OF ENERGY. WHEN THIS HAPPENS IT IS PREFERABLE TO REPLACE THE 9 VOLT BATTERY.



EVEN WITH THIS SIGNAL, IT IS POSSIBLE FOR THE SCALE TO KEEP ON OPERATING FOR A SHORT PERIOD OF TIME APPROXIMATELY (2 HOURS), BUT AFTER A SECOND WARNING SIGNAL APPEARS ("LOW bat") IN THE VIEW FINDER, THE SCALE STOPS ITSELF AND SHUTS ITSELF DOWN.



TO ELIMINATE ANY OF THE TWO INDICATORS AND CONTINUE USING THE SCALE, CONNECT THE AC/DC POWER SUPPLY TO THE SCALE OR REPLACE THE BATTERY.

3.- **PLATE HOLDER:** MANUFACTURED IN ALUMINUM THAT PROVIDES SUPPORT

4.- **BATTERY COMPARTMENT:** PLACE WHERE IS LOCATED THE 9 VOLT BATTERY (NO INCLUDED)

5.- **JACK:** CONNECTS THE AC/DC POWER SUPPLY TO THE SCALE WHICH IS LOCATED IN THE BOTTOM OF THE SCALE (IN THE BASE).

6.- **GENERAL VIEW FINDER:** IT SHOWS THE WEIGHT OF THE PRODUCTS IN KILOGRAMS, POUNDS OR OUNCES. THE DISPLAY IS LIQUID CRYSTAL.

7.- **MEMBRANE KEYBOARD:** WITH BIG MEMBRANE AND READABLE KEYS. IT IS VERY EASY TO HANDLE.

8.- **AC/DC ADAPTOR:** IT CHANGES FROM 120 VOLTS AC TO 9 VOLTS DC. THE PLUG OF THIS ADAPTOR IS CONNECTED TO THE JACK.

INSTALLATION INSTRUCTIONS

1.- UNPACK YOUR SCALE AND CHECK THAT YOUR SCALE IS IN GOOD CONDITION IF THERE IS ANY PROBLEM PLEASE IMMEDIATELY REPORT IT TO THE AUTHORIZED DISTRIBUTOR.

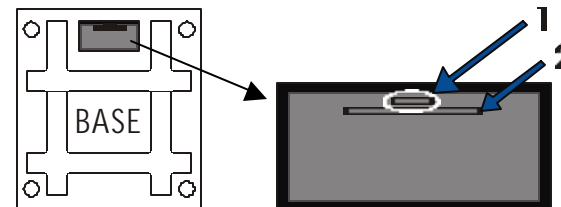
2.- PLACE THE SCALE WHERE THERE IS NOT ANY MOVEMENT OR VIBRATION. MAKE SURE THE SURFACE IS LEVELED,

3.- CONNECT THE AC/DC POWER SUPPLY'S CABLE (IF YOU USE IT) TO 120 V a.c. OUTLET.

4.- TURN THE SCALE ON AND AFTER THE COUNTDOWN SEQUENCE. YOUR SCALE WILL DISPLAY ZEROS AND WILL BE READY TO USE.

LOCATION OF THE 9 VOLT BATTERY.

THE COMPARTMENT FOR THE 9 VOLT BATTERY IS LOCATED UNDER THE SCALE. TO OPEN IT JUST PRESS FROM THE SMALL NOTCH (1) TO THE BIG ONE (2), THEN LIFT THE CAP. IN ORDER TO HAVE LONG PERIOD OF OPERATION TIME IT IS PREFERABLE TO USE ALKALINE BATTERY TYPE.



OPERATION

HOW TO WEIGHT A PRODUCT

TURN YOUR SCALE ON PRESSING THE **ON** KEY. YOU WILL SEE THAT A COUNTDOWN SEQUENCE STARTS IN THE GENERAL VIEW FINDER. AT THE END OF THIS COUNTDOWN SEQUENCE, THE VIEW FINDER WILL BE IN "ZEROS" . AT THIS MOMENT THE SCALE IS READY TO WEIGHT.

THEN PLACE THE PRODUCT TO WEIGHT ON THE PLATE AND YOU WILL SEE THE WEIGHT IN THE ALPHANUMERIC INDICATOR. THE "Kg", "Lb" OR "Oz" SYMBOL WILL APPEAR IN THE INDICATOR. FOR EXAMPLE, IF YOU PLACE A PRODUCT WHOSE WEIGHT IS 2.5 POUNDS, YOU WILL SEE THE FOLLOWING:



2.500 Lb

HOW TO USE THE "TARE".

WHEN YOU WISH TO WEIGHT A PRODUCT IN A CONTAINER AND YOU DO NOT WANT TO CONSIDER THE CONTAINER'S WEIGHT DURING THE OPERATION, YOU CAN USE THE "TARE" FUNCTION. TO USE THIS FUNCTION, FOLLOW THESE STEPS: SUPPOSE YOU ARE GOING TO WEIGHT 5 POUNDS OF SOME PRODUCT IN A CONTAINER THAT WEIGHT 4.5 POUNDS.

PLACE THE EMPTY CONTAINER ON THE SCALE.



4.500 Lb

PRESS THE **TARE** KEY. THE VIEW FINDER WILL DISPLAY:



0.000 Lb
ZERO TARE

PUT THE PRODUCT INSIDE THE CONTAINER AND THE SCALE SHOWS ONLY THE WEIGHT OF THE PRODUCT WITHOUT THE CONTAINER'S WEIGHT. NOTICE THAT WHEN YOU REMOVE THE CONTAINER A NEGATIVE NUMBER (WEIGHT OF CONTAINER) APPEARS IN THE GENERAL VIEW FINDER.



-4.500 Lb

IT IS IMPORTANT TO MENTION THAT THIS FUNCTION IS SUBTRACTIVE. FOR EXAMPLE, IF WE HAVE A CONTAINER THAT WEIGHT 4 POUNDS, THE SCALE WILL ONLY BE ABLE TO WEIGHT UP TO 6 POUNDS OF PRODUCT TO COMPLETE THE MAXIMUM CAPACITY (10 POUNDS, 5 KILOGRAMS OR 160 OZ. IN A PS-5 MODEL).

TO CANCEL THE **TARE** FUNCTION JUST PRESS THE **TARE** KEY AND THE SCALE WILL RETURN TO THE NORMAL FUNCTION. THE **NET** SYMBOL WILL DISAPPEAR
NOTE: MAKE SURE THAT THE SCALE IS FREE OF WEIGHT OVER THE PLATE

THE TWO FOLLOWING OBSERVATIONS ARE SPECIALLY IMPORTANT.

A) WHEN THERE IS NO WEIGHT ON THE SCALE YOU CAN NOT ACTIVATE THE "TARE" FUNCTION.

B) WHEN A CONTAINER IS "TARED", BUT WHEN YOU REMOVE IT FROM THE PLATE AND YOU REMOVE A LARGER WEIGHT THAN THE CONTAINER, (GREASE, REMAINING OF A PRODUCT, ETC.), OR WHEN THE PLATE IS SLIGHTLY LIFTED WITH YOUR HAND. "NEG" (NEGATIVE) WILL APPEAR.



NEG.

HOW TO USE THE "REFERENCE TO ZERO"

IT IS POSSIBLE FOR THE SCALE TO SHOW A NUMBER IN THE VIEW FINDER WITHOUT HAVING ANY PRODUCT ON THE PLATE DUE TO VOLTAGE VARIATIONS, ROUGH HANDLING, OR SOME OTHER FACTOR. WHEN THIS HAPPENS, SIMPLY PRESS

THE **ZERO** KEY AND THE VIEW FINDER WILL RETURN TO "ZERO". THE WORD "ZERO" WILL APPEAR IN THE VIEW FINDER. THIS OPERATION IS COMMONLY KNOWN AS "RESETTING TO ZERO".

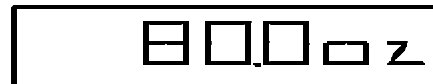
HOW TO USE THE **kg**, **lb**, **oz** KEYS.

IF THE SCALE IS IN THE "Lb" MODE AND YOU PUT ON THE SCALE A PRODUCT THAT WEIGHTS 5 POUNDS YOU WILL SEE THE FOLLOWING IN THE VIEW FINDER



5.000 Lb

IF YOU PRESS THE **oz** KEY THE SCALE WILL CHANGE TO "oz" MODE AND YOU WILL SEE THE FOLLOWING IN THE VIEW FINDER



800 oz