

integral™



## 256-bit AES HARDWARE ENCRYPTED PRODUCT RANGE

USB 3.0 ♦ USB 2.0 ♦ SSD

[integralmemory.com](http://integralmemory.com)



## Introducing **integral**™

Integral Memory plc are one of the largest digital memory producers in Europe with more than 25 years of sales success.

Integral was founded in London, England during 1989 and quickly became one of Europe's leading DRAM specialists. Over the next two decades Integral expanded its product range as the solid-state flash memory market matured. Integral has long-term partnerships with leading component suppliers including Toshiba, Samsung and Hynix. International sales offices have been established in France, Spain, the Netherlands and UAE.

The Integral range includes a cutting-edge FIPS 140-2 validated Hardware Encrypted SSD and a selection of FIPS 140-2 validated, USB Flash Drives with AES 256-bit encryption; ensuring sensitive data stored on the USB cannot be compromised.

Our passion is to bring you the latest memory products built on quality, reliability and great prices.

**For detailed product information and technical support please visit our website [www.integralmemory.com](http://www.integralmemory.com)**

## Hardware Encrypted USB Flash Drives

Portable data security is a challenge facing all IT departments and government bodies. All data that is off company premises is at risk.

Integral produce a range of AES 256-bit hardware encrypted USB Flash Drives that provide an easy to use, cost effective and highly secure solution that is designed to work with your end-point security. Dual password versions are also available, making these more easy to manage in I.T. departments.

Our encrypted USB Flash Drive range is FIPS 197/140-2 validated and all models are zero footprint, so no software installation is required. All files transferred to the drive are automatically encrypted and are protected by a mandatory high-strength password. All Crypto products will securely destroy data safely if the set password attempts are exceeded, protecting your data if lost or stolen.

## Hardware Encrypted Solid State Drives

Hard Drive security is a challenge facing all IT departments and government bodies.

Integral produce a range of AES 256-bit hardware encrypted SSDs that provide an easy to use, cost effective and highly secure solution that is designed to work with your end-point security.

If a PC/laptop/ultrabook/tablet protected with an Integral Crypto SSD is lost or stolen, sensitive data is securely encrypted and cannot be accessed without the high-strength password. This includes the operating system as well as all other files that are stored on the drive. An unauthorised user WILL NOT be able to boot the system or access any data by transferring the Crypto SSD to another system or by cloning the drive.

Our Crypto range is FIPS 140-2 validated and all models are zero footprint, so no software installation is required. All files on the drive are automatically encrypted and are protected by a mandatory high-strength password. All Crypto products will securely destroy data safely if the set password attempts are exceeded, protecting your data if lost or stolen.

The Crypto SSD is the no-fuss and highly-secure solid state encryption solution for many industries including; finance, legal, health, education and government.

### Hardware encryption in 3 easy steps

1. Install the Crypto SSD in your host device. A Windows operating system is required. This can be cloned from an existing drive or image (with OS and data) before the Crypto SSD is fitted, or a fresh installation can be completed after the Crypto SSD is fitted in your host device, by using the manufacturers setup disks.
2. Run the "SSDLock" program once (supplied on a USB) to set the encryption and specify usernames and passwords. Power down.
3. Your system is now protected with Full Disk Encryption (FDE). On every boot up, a valid username and password is required to access the system.

## Why choose hardware encryption over software encryption?

The major difference between hardware encryption and software encryption is that with hardware based encryption, the encryption and decryption processes are carried out by a dedicated processor (part of the Integral Crypto hardware). In software encryption, the resources of the device on which the software is installed are used for the encrypting and decrypting of data. This makes hardware encryption much faster. Another significant advantage of hardware encryption is that the cryptographic key is stored in a separate inaccessible portion of memory storage, making it more secure than software encryption.

## What is the difference between FIPS 140-2 and FIPS 197 certification?

FIPS 197 certification looks at the hardware encryption algorithms used to protect the data. FIPS 140-2 is the next, more advanced level of certification. FIPS 140-2 includes a rigorous analysis of the product's physical properties. So, with a FIPS 140-2 certified SSD the tamper-proof design of the circuit board has been approved, as well as the data encryption. FIPS certification proves that the product has been tested by an independent government approved laboratory.

**Crypto SSD and USB drives are used and trusted worldwide by government departments, global corporations and SMEs.**

**NEW**

**USB 3.0**  
FLASH DRIVE



## Courier Dual USB 3.0 FIPS 197

- **Dual password / Master password override** in addition to a high-strength user password. If a user forgets their password the Courier Dual can be accessed with a master password by an IT administrator (optional)
- **AES 256-bit hardware encryption**
- **FIPS 197 Validated** - Certificate No. 2590
- **USB 3.0 SuperSpeed data transfer** - with compatible PC/ Mac hardware
- **Secure Entry** - Data cannot be accessed or removed without the correct high strength 8-16 character password
- **Brute-force Password Attack Protection** - Data will be automatically erased after 6 failed access attempts and Drive reset
- **Dual OS** - Compatible with both Windows and Mac
- **Personal ID Function (optional)** - Contact details can be added so that Drive can be returned, whilst confidential data remains secure
- **Zero Footprint** - No software installation required
- **Multi-lingual interface** and a simple user interface for “out of the box” use

USB 3.0



Cap Storage



Hardware Unique ID available for use with Endpoint software, see page 11

### Courier Dual USB 3.0 FIPS 197

	Courier Dual 3.0 FIPS 197
8GB	INFD8GCOUDL3.0-197
16GB	INFD16GCOUDL3.0-197
32GB	INFD32GCOUDL3.0-197
64GB	INFD64GCOUDL3.0-197

## Courier USB 3.0 FIPS 197

- **AES 256-bit hardware encryption**
- **FIPS 197 Validated** - Certificate No. 2590
- **USB 3.0 SuperSpeed data transfer** - with compatible PC/ Mac hardware
- **Secure Entry** - Data cannot be accessed or removed without the correct high strength 8-16 character password
- **Brute-force Password Attack Protection** - Data will be automatically erased after 6 failed access attempts and Drive reset
- **Dual OS** - Compatible with both Windows and Mac
- **Personal ID Function (optional)** - Contact details can be added so that Drive can be returned, whilst confidential data remains secure
- **Zero Footprint** - No software installation required
- **Multi-lingual interface** and a simple user interface for “out of the box” use
- **Single user password**

USB 3.0



Cap Storage

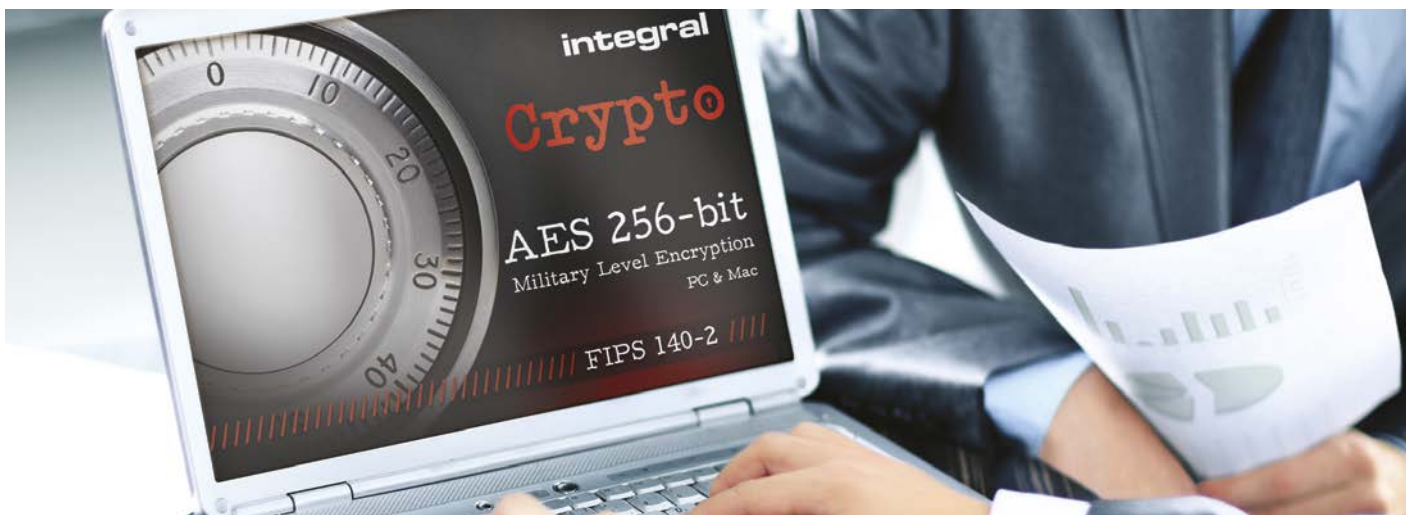


Hardware Unique ID available for use with Endpoint software, see page 11

### Courier USB 3.0 FIPS 197

	Courier 3.0 FIPS 197
8GB	INFD8GCOU3.0-197
16GB	INFD16GCOU3.0-197
32GB	INFD32GCOU3.0-197
64GB	INFD64GCOU3.0-197

# USB - Hardware Encryption



## Crypto Dual FIPS 140-2 / FIPS 197

- **Dual password / Master password override** in addition to a high-strength user password. If a user forgets their password the Crypto Dual can be accessed with a master password by an IT administrator (optional)
- **Dual OS** - Compatible with both Windows and Mac
- **AES 256-bit hardware encryption**
- **FIPS 140-2/FIPS 197 Validated** - Certificate No. 1821/1137
- **Secure Entry** - Data cannot be accessed without the correct high strength alphanumeric 8-16 character password. A password hint option is available. The password hint cannot match the password
- **Brute-Force Password Attack Protection** - Data is automatically erased after 6 failed access attempts. The data and encryption key are securely destroyed and the Crypto Drive is reset
- **Auto-lock** - The Crypto Drive will automatically encrypt all data and lock when removed from a PC or when the screen saver or "computer lock" function is activated on the host PC
- **Password Entry Count** - The Crypto Drive records the failed entry count. e.g. if the Crypto is removed after 2 failed attempts and reinserted, the drive will resume with the 3rd attempt
- **Personal ID Function** - As an option, contact details can be added to the Crypto that can be viewed without compromising encrypted data
- **Unique number** - The USB pin on each drive is etched with a unique and random 7-digit code. This allows a record to be kept of which drive has been allocated to a specific user
- **Rugged triple-layer waterproof design** - Protects the Crypto Drive against knocks, drops, break-in and submerging in water. The electronics are sealed in epoxy resin and then shielded by a steel inner case. The rubberised silicone outer casing provides a final layer of protection
- **Multi-lingual interface** and a simple user interface for "out of the box" use



### Crypto Dual FIPS 140-2

2GB	INFD2GCRYPTODL140-2
4GB	INFD4GCRYPTODL140-2
8GB	INFD8GCRYPTODL140-2
16GB	INFD16GCRYPTODL140-2
32GB	INFD32GCRYPTODL140-2

### Crypto Dual FIPS 197

2GB	INFD2GCRYPTODL197
4GB	INFD4GCRYPTODL197
8GB	INFD8GCRYPTODL197
16GB	INFD16GCRYPTODL197
32GB	INFD32GCRYPTODL197

Hardware Unique ID available for use with Endpoint software, see page 11

## Crypto Dual + FIPS 140-2 / FIPS 197

- Feature set as above
- Expanded design allows for massive storage capacity of 64GB and 128GB
- 4-Channel access for faster read/ write

USB 2.0



Shockproof



Key Chain



Waterproof



integralmemory.com/video



### Crypto Dual Plus FIPS 140-2

64GB	INFD64GCRYDLPL140-2
128GB	INFD128GCRYDLPL140-2

### Crypto Dual Plus FIPS 197

64GB	INFD64GCRYDLPL197
128GB	INFD128GCRYDLPL197

Hardware Unique ID available for use with Endpoint software, see page 11



## Crypto Drive FIPS 140-2 / FIPS 197

- **AES 256-bit hardware encryption**
- **FIPS 140-2/FIPS 197 Validated** - Certificate No. 1821/1137
- **Dual OS (FIPS 197 only)** - Compatible with both Windows and Mac
- **Secure Entry** - Data cannot be accessed without the correct high strength alphanumeric 8-16 character password. A password hint option is available. The password hint cannot match the password
- **Brute-Force Password Attack Protection** - Data is automatically erased after 6 failed access attempts. The data and encryption key are securely destroyed and the Crypto Drive is reset
- **Auto-lock** - The Crypto Drive will automatically encrypt all data and lock when removed from a PC or when the screen saver or "computer lock" function is activated on the host PC
- **Zero Footprint** - No software installation required
- **Password Entry Count** - The Crypto Drive records the failed entry count. e.g. if the Crypto is removed after 2 failed attempts and reinserted, the drive will resume with the 3rd attempt
- **Personal ID Function** - As an option, contact details can be added to the Crypto that can be viewed without compromising encrypted data
- **Unique number (FIPS 140-2 only)** - The USB pin on each drive is etched with a unique and random 7-digit code. This allows a record to be kept of which drive has been allocated to a specific user
- **Rugged triple-layer waterproof design** - Protects the Crypto Drive against knocks, drops, break-in and submerging in water. The electronics are sealed in epoxy resin and then shielded by a steel inner case. The rubberised silicone outer casing provides a final layer of protection
- **Multi-lingual interface** and a simple user interface for "out of the box" use

\*Up to 4 ft. water; conforms to IEC 60529 IPX8



**Hardware Unique ID available for use with Endpoint software, see page 11**



### Crypto Drive FIPS140-2 / FIPS 197

	Crypto FIPS 140-2	Crypto FIPS 197
2GB	INF22GCRYPTO140-2	INF22GCRYPTO197
4GB	INF44GCRYPTO140-2	INF44GCRYPTO197
8GB	INF88GCRYPTO140-2	INF88GCRYPTO197
16GB	INF16GCRYPTO140-2	INF16GCRYPTO197
32GB	INF32GCRYPTO140-2	INF32GCRYPTO197

## Courier FIPS 197

The best selling Integral Courier is available in an Advanced Encryption Standard (AES) Security Edition.

- **AES 256-bit hardware encryption**
- **FIPS 197 Validated** - Certificate No. 1137
- **Secure Entry** - Data cannot be accessed or removed without the correct high strength 8-16 character password
- **Brute-force Password Attack Protection** - Data will be automatically erased after 6 failed access attempts and Drive reset
- **Zero Footprint** - No software installation required
- **Multi-lingual interface** and a simple user interface for "out of the box" use
- Cap stores in base when Drive is in use
- 2 year warranty



USB 2.0



**Hardware Unique ID available for use with Endpoint software, see page 11**




### Courier - FIPS 197

2GB	INF22GBCOUAT
4GB	INF44GBCOUAT
8GB	INF88GBCOUAT
16GB	INF16GBCOUAT
32GB	INF32GBCOUAT

# USB - Hardware Encryption

**Crypto**

				
Specs	Crypto 140-2	Crypto 197	Crypto Dual 197	Crypto Dual 140-2
Available Capacities	2GB, 4GB, 8GB, 16GB, 32GB	2GB, 4GB, 8GB, 16GB, 32GB	2GB, 4GB, 8GB, 16GB, 32GB	2GB, 4GB, 8GB, 16GB, 32GB
AES 256-bit hardware encryption	✓	✓	✓	✓
FIPS Validation and Certificate number	FIPS 140-2 Level 2 Certificate No. 1424	FIPS 197 Certificate No. 1137	FIPS 197/140-2 Level 2 Certificate No. 1137	FIPS 197/140-2 Level 2 Certificate No. 1821
Mandatory encryption of all files	✓	✓	✓	✓
USB	2.0	2.0	2.0	2.0
Zero Footprint - No software required	✓	✓	✓	✓
Compatible with Endpoint security systems	✓	✓	✓	✓
Works on Windows without administrator privileges	✓	✓	✓	✓
Works on Mac OS X without administrator privileges	-	✓	✓	✓
Secure Entry - Password Mandatory	✓	✓	✓	✓
High-Strength Password Enforcement	✓	✓	✓	✓
Brute-Force Password Attack Protection	✓	✓	✓	✓
Auto-Lock	✓	✓	✓	✓
Password Entry Count	✓	✓	✓	✓
Personal ID Function	✓	✓	✓	✓
Rugged triple-layer waterproof design	✓	✓	✓	✓
User manual stored on drive	✓	✓	✓	✓
Multi-lingual interface	24 Languages	24 Languages	26 Languages	26 Languages
Dual Password	-	-	✓	✓
Dual OS - PC & Mac compatible	-	✓	✓	✓
4 Channel access (faster read & write speeds)	-	-	-	-
Serial Number Etching	✓	available on request	✓	✓





## What is FIPS?

FIPS (Federal Information Processing Standards) is a US & Canadian certification which is recognised around the world as AES compliant devices that can be utilized by Federal agencies or departments for the purpose of protecting sensitive data.

For more on FIPS, please see page 2

**Hardware Unique ID available for use with Endpoint software, see page 11**

# USB - Hardware Encryption

				
Crypto Dual+ 197	Crypto Dual+ 140-2	Courier FIPS 197	Courier Dual 3.0 197	Courier 3.0 197
64GB, 128GB	64GB, 128GB	2GB, 4GB, 8GB, 16GB, 32GB	8GB, 16GB, 32GB, 64GB	8GB, 16GB, 32GB, 64GB
✓	✓	✓	✓	✓
FIPS 197 Level 2 Certificate No. 1137	FIPS 140-2 Level 2 Certificate No. 1821	FIPS 197 Level 2 Certificate No. 1137	FIPS 197 Certificate No. 2590	FIPS 197 Certificate No. 2590
✓	✓	✓	✓	✓
2.0	2.0	2.0	2.0/3.0	2.0/3.0
✓	✓	✓	✓	✓
✓	✓	✓	✓	✓
✓	✓	✓	✓	✓
✓	✓	✓	✓	✓
✓	✓	✓	✓	✓
✓	✓	✓	✓	✓
✓	✓	✓	✓	✓
✓ <sup>1</sup>	✓ <sup>1</sup>	✓ <sup>1</sup>	✓ <sup>1</sup>	✓ <sup>1</sup>
✓	✓	✓	✓	✓
✓	✓	✓	✓	✓
✓	✓	-	-	-
✓	✓	✓	✓	✓
26 Languages	26 Languages	24 Languages	26 Languages	26 Languages
✓	✓	-	✓	-
✓	✓	✓	✓	✓
✓	✓	-	-	-
✓	✓	available on request	available on request	available on request

## What is AES Hardware Encryption?

AES stands for Advanced Encryption Standard. Many government bodies around the world have adopted this encryption model. Integral Encrypted USB Flash Drives use the highest 256-bit AES encryption key.

<sup>1</sup> Locks if PC is idle for more than 10 mins



# Crypto SSD

**BIOS Independent**  
Crypto SSD security system runs independently of your system BIOS, unlike other hardware encrypted SSDs

Seamless encryption unnoticeable to the user

**ADMIN+USER** passwords configurable



**OPAL Compliant**

Specification Available

Details on request

**Full Disc Encryption with no licensing or subscription fees.**

## Crypto SSD 2.5" SATA III (6Gbps)

Crypto SSD is the **Full Disk Encryption** solution for Windows desktops and laptops. Featuring **AES 256-bit Hardware Encryption** so you can encrypt and protect your sensitive data and get the speed, reliability and power benefits of SSD. Once encryption is set, a valid user name and password is required to access the Crypto SSD prior to system boot (before Windows loads).

- **FIPS 140-2 Validated**
- **Mandatory encryption**
- **Secure Entry** - Encrypted data cannot be accessed without the correct high-strength 8-16 character alphanumeric password. Before use a high-strength password must be set
- **Rugged Design** - The electronics are sealed in tamper-free epoxy resin and then shielded by a metal outer case
- **High-speed Read/Write** - up to 450MB/s
- **Quick Boot** - Using a solid state disk in place of a traditional hard drive can cut your desktop computer or laptop's boot time in half
- **Shockproof** - no moving parts, so a greater resistance to shock and vibration than HDD
- **Ultra-slim form factor (7mm)** - Ideal for the latest slimline laptops, 7mm → 9mm adapter also included

- **Silent operation** - no spin or seek time
- **Low heat** - a more comfortable user experience
- **Low power usage** - laptop battery will last far longer with SSD than HDD
- **Endpoint security software compatible** - The Integral Crypto SSD operates comfortably with endpoint security solutions by using the configurable hardware unique ID feature, which is part of the program
- **OPAL compliant specification available** - please contact sales team for information
- **Warranty** - 3 Years



### Crypto SSD SATA III - FIPS 140-2

64GB	INSSD64GS625M7CR140
128GB	INSSD128GS625M7CR140
256GB	INSSD256GS625M7CR140
512GB	INSSD512GS625M7CR140
1TB	INSSD1TS625M7CR140





**Full Disc Encryption  
with no licensing or  
subscription fees.**



### BIOS Independent

Crypto SSD security system runs independently of your system BIOS, unlike other hardware encrypted SSDs

Seamless encryption  
unnoticeable to the user

**ADMIN+USER**  
passwords configurable

## Crypto SSD M.2 SATA III (6Gbps)

Crypto M.2 SSD is the **Full Disk Encryption** solution for Windows laptops and UltraBooks. Featuring **AES 256-bit Hardware Encryption** so you can encrypt and protect your sensitive data and get the speed, reliability and power benefits of SSD. Once encryption is set, a valid user name and password is required to access the Crypto M.2 SSD computer with the installed prior to system boot (before Windows loads).

- **FIPS 140-2**
- **Mandatory encryption**
- **Secure Entry** - Encrypted data cannot be accessed without the correct high-strength 8-16 character alphanumeric password. Before use a high-strength password must be set
- **Secure Design** - the electronics are sealed in tamper-free epoxy resin
- **High-speed Read/Write** - up to 450MB/s
- **Quick Boot** - Using a solid state disk in place of a traditional hard drive can cut your laptop's boot time in half
- **Shockproof** - no moving parts, so a greater resistance to shock and vibration than HDD
- **Silent operation** - no spin or seek time

- **Low heat** - a more comfortable user experience
- **Low power usage** - laptop battery will last far longer with SSD than HDD
- **Endpoint security software compatible** - The Integral Crypto M.2 SSD operates comfortably with endpoint security solutions by using the configurable hardware unique ID feature, which is part of the program
- M.2 form factor with SATA III 6Gbps interface (backwards compatible with SATA 3Gbps and SATA 1.5Gbps)
- **Warranty** - 3 Years

### Crypto M.2 SATA 22X60

128GB	INSSD128GM2M2260C140
256GB	INSSD256GM2M2260C140
512GB	INSSD512GM2M2260C140

### Crypto M.2 SATA 22X80

64GB	INSSD64GM2M2280C140
128GB	INSSD128GM2M2280C140
256GB	INSSD256GM2M2280C140

# SSD - Hardware Encryption

## BIOS Independent

Crypto SSD security system runs independently of your system BIOS, unlike other hardware encrypted SSDs

Seamless encryption  
unnoticeable to the user

ADMIN+USER  
passwords configurable



Details on request

**Full Disc Encryption  
with no licensing or  
subscription fees.**

## Crypto SSD mSATA III (6Gbps)

Crypto mSATA SSD is the **Full Disk Encryption** solution for small form factor machines, Windows laptops and UltraBooks. Featuring **AES 256-bit Hardware Encryption** so you can encrypt and protect your sensitive data and get the speed, reliability and power benefits of SSD. Once encryption is set, a valid user name and password is required to access the Crypto mSATA SSD prior to system boot (before Windows loads).

- **FIPS 140-2**
- **Mandatory encryption**
- **Secure Entry** - Encrypted data cannot be accessed without the correct high-strength 8-16 character alphanumeric password. Before use a high-strength password must be set
- **Secure Design** - the electronics are sealed in tamper-free epoxy resin
- **High-speed Read/Write** - up to 450MB/s
- **Quick Boot** - Using a solid state disk in place of a traditional hard drive can cut your desktop computer or laptop's boot time in half

- **Shockproof** - no moving parts, so a greater resistance to shock and vibration than HDD
- **Silent operation** - no spin or seek time
- **Low heat** - a more comfortable user experience
- **Low power usage** - laptop battery will last far longer with SSD than HDD
- **Endpoint security software compatible** - The Integral Crypto mSATA SSD operates comfortably with endpoint security solutions by using the configurable hardware unique ID feature, which is part of the program
- mSATA form factor with SATA III 6Gbps interface (backwards compatible with SATA 3Gbps and SATA 1.5Gbps)
- **Warranty** - 3 Years

### Crypto mSATA SSD - FIPS 140-2

32GB	INSSD32GMSA6MCR140
64GB	INSSD64GMSA6MCR140
128GB	INSSD128GMSA6MCR140
256GB	INSSD256GMSA6MCR140



Ultra Fast



Low Power Use



Zero Noise



Shockproof



## Customisation

Customisation Available - Your own serial number etching, Flash Drive and GUI can be customised to suit your brand (subject to minimum order quantities).

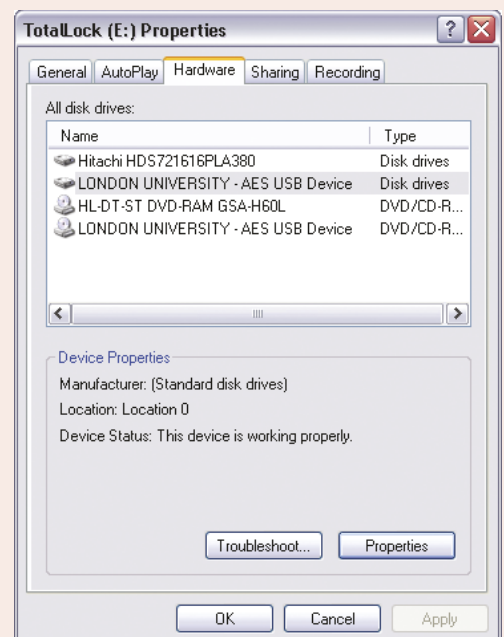
## Hardware Unique ID for Endpoint software

The Integral hardware encrypted Flash Drive range can be personalised with a designated company identifying name or number. This will allow a Network Administrator to block access to unrecognised USBs for security purposes, whilst allowing the Integral encrypted Flash Drive to function as the 'official' company drive.

During production a personalised tag (e.g. "LONDON UNIVERSITY") can be embedded into the Crypto that can be viewed on a PC. The tag gives Endpoint software a convenient way to identify Integral drives.

Each drive can be personalized further (upon request) with an individual user specific personal tag e.g "LONDON UNIVERSITY" – USER1234" if required.

This personalisation can be offered on any Integral USB Flash Drive (requested at time of order).



## Head Office

Integral Memory plc  
Unit 6 Iron Bridge Close  
Iron Bridge Business Park  
London  
NW10 0UF  
England

**Tel:** +44 20 8451 8700  
**Fax:** +44 20 8459 6301

sales@integralmemory.com  
www.integralmemory.com  
www.integralmemoryplc.com

## France

Integral Europe SARL  
38 Ter Rue de Verdun  
92150 Suresnes  
France

Tel: +33 1 41 44 73 00  
Fax: +33 1 41 44 07 18

www.integralmemory.com  
salesfr@integraleurope.com

## Spain

Integral Memory España, S.A.  
Calle Juan Perez Zuniga, 32  
28027 Madrid  
Spain

Tel: +34 91 406 29 32  
Fax: +34 91 377 55 40

www.integralmemory.com  
sales@integraleurope.com

## Netherlands

Integral Memory plc  
Burgemeester Brandtstraat 2  
2841 XC Moordrecht  
The Netherlands

Tel: +31 18 23 77240  
Fax: +31 18 23 77241

www.integralmemory.com  
netherlands@integraleurope.com

## UAE

Integral Memory International FZCO  
Office Number 1, High Bay Building  
Dubai Silicon Oasis Authority  
PO Box 341128  
Dubai, U.A.E

Tel: +971 4326 3446  
Fax: +971 4326 3447

www.integralmemory.com  
salesmea@integralmemory.com

## Representative Offices

### Poland

M: +48 60 244 3002

piotr.chrzanowski@integralmemory.com

### Portugal

Tel: +351 210819012  
M: +351 912881144  
Fax: +351 210819012

sobrinho.pires@integraleurope.com

### Australia & New Zealand

Tel: +61 243 424 861  
M: +61 406 061 437

duncan.way@integralmemory.com