

# EnVivo

Gebruikershandleiding

## EnVivo HD Media Player



## INHOUDSOPGAVE

---

Important Safety Instructions.....	3
INTRODUCTION.....	4
FEATURE.....	4
SPECIFICATIONS .....	5
FILE CONTENT.....	6
PACK CONTENTS.....	6
CONNECTIONS.....	7
Wired Lan Setup.....	17
Fix IP (manually) .....	17
Connecting a USB device .....	15
Watching Video.....	15
Playing Music.....	16
Viewing Photos.....	16
System firmware upgrade .....	18
COMMON FAULTS AND TROUBLE SHOOTING .....	19

**For latest software update please go to [www.teknihall.be](http://www.teknihall.be).**

## @IMPORTANT NOTE!

Should you encounter any problem, please do not return the product to the store before carefully reading the user manual. You can also find answers to your technical support questions through our support service [info@teknihall.be](mailto:info@teknihall.be) / [www.teknihall.be](http://www.teknihall.be).

If you still need assistance please call Teknihall at 0900 400 2001.

## Important Safety Instructions

This device is designed and manufactured to assure personal safety. Improper use can result in electric shock or fire hazard. The safeguards incorporated into this unit will protect you if you observe the following procedures for installation, use, and servicing.

- Read these instructions.
- Follow all instructions.
- Keep these instructions.
- Heed all warnings.
- Do not use this apparatus near water.
- Clean only with dry cloth.
- Do not block any ventilation openings. Install in accordance with the manufacturer's instructions.
- Do not install near any heat sources such as radiators, heat registers, stoves, or other apparatus (including amplifiers) that produce heat.
- Only use attachments/accessories specified by the manufacturer.
- Unplug this apparatus during lightning storms or when unused for long periods of time.
- Do not operate this device outside the temperature range of 5°C–35°C.
- Do not drop or shake the device.
- Do not move the device when it is powered on.
- Do not overload wall outlets.

## INTRODUCTION

Thank you for purchasing the HD Media Player. This user manual provides step-by-step instructions for installing and using your new media player.

The HD Media Player is an ultra-compact, high-definition (HD) USB 2.0 media player that attaches to an entertainment unit through a variety of audio/video interfaces and supports playback of major audio, video, and image file formats. It supports high-definition video playback of up to 1080p through an HDMI connection or standard definition for TVs with lower capabilities. High-fidelity digital audio is supported from an optical interface.

Two USB ports are available to connect USB storage devices.

The included remote control lets you quickly browse through your media library and configure settings.

## FEATURE

- Video format – MOV, WMV, MKV, MP4, AVI, MPG, TS/M2TS/TP/TRP, ISO, IFO, VOB, DAT, RM/RMVB.
- Audio format - MP3, WMA, WAV, AAC, FLAC, OGG, Dolby digital AC3, DTS.
- Image format - JPG/BMP/PNG/GIF.
- USB HOST input - Connection USB mass storage device (support NTFS/FAT/FAT32).
- HDMI output - digital audio and high-definition video.
- Network - RJ45 port, 10/100M, can connect to local internet.
- Video output - Video output resolution includes 480i (using the composite interface), or 480p, 576p, 720i, 720p, 1080i, and 1080p (available when using the HDMI interface).
- Composite & Component output - Composite interface (RCA, yellow/white/red) and Component interface (RCA, green/blue/red) for analog AV connection.
- SPDIF output - Digital audio for high-fidelity digital audio.

## SPECIFICATIONS

<b>Video Decoding</b>	<b>Video decode:</b> MPEG1/2/4, Divx, Xvid, H.264, WMA, VC-1, RM/RMVB <b>Format:</b> WMV, MKV, MOV, AVI, MP4, MPG, TS/M2TS/TP/TRP, ISO, IFO, VOB, DAT, RM/RMVB
<b>Audio Decoding</b>	MP3, WMA, AAC, WAV, OGG, Dolby digital AC3
<b>JPEG Decoding</b>	JPEG, PNG, BMP, GIF
<b>Network Connection</b>	RJ45 10/100M connect
<b>Subtitle</b>	SMI, SRT, SUB, SSA
<b>Video Output</b>	Composite/Component/HDMI
<b>Audio Output</b>	Stereo/digital HDMI/Optical
<b>USB</b>	HOST 2.0 x 2
<b>Dimensions</b>	160 x 120 x 45 mm (wide x height x deep)
<b>Power adapter</b>	AC input: 100 - 240V, 50Hz/60Hz. DC output: 12V, 1.5A

## FILE CONTENT

DECODE		FORMATS	RESOLUTION
VIDEO	MPEG-1	DAT	320 x 240
		MPG	720 x 576
	MPEG-2	VOB	720 x 576
		MPG	1920 x 1080P
		TS/M2TS/TP/TRP	1920 x 1080P
	MPEG-4,Divx,Xvid	AVI	1920 x 1080P
		MP4	1920 x 1080P
		MKV	1920 x 1080P
	VC-1	WMV	1920 x 1080P
	RM/RMVB	RM/RMVB	1920 x 1080P
	H.264	AVI	1920 x 1080P
		MP4	1920 x 1080P
		MOV	1920 x 1080P
		MKV	1920 x 1080P
AUDIO	MP3, WMA, WAV, AAC, FLAC, OGG, Dolby Digital AC3, DTS	Support	
PICTURE	JPG/JPEG, BMP, PNG, GIF	Support	

## PACK CONTENTS

- EnVivo HD Media Player
- HDMI cable
- Composite cable
- Remote control
- Power adapter
- User manual

## CONNECTIONS

### Front side



Item	Component	Description
1	Power LED	On—Press the power on button about 3 sec when The power cable is connected and the power is on. Off—The HD media player is in standby mode or the power cable is disconnected.
2	Infrared receiver	Receives signals from the remote control. Point the tip of the remote control to the infrared receiver and ensure that the path between the two is unobstructed

### Back side



Item	Component	Description
1	Power jack	Connects the power cable
2	Composite & Component jacks	Connect to your TV's analog video and audio jacks
3	SPDIF port	Connect to your amplifier and get digital audio
4	HDMI port	Connects to your TV's HDMI port
5	Network port	Can connect to network via internet port
6	USB port X2	Supports connection of removable storage devices, portable media players, and digital cameras with USB connectors

## Remote Control

- |                      |                        |
|----------------------|------------------------|
| 1. HOME              | 2. INFO                |
| 3. POWER             | 4. Number 0~9          |
| 5. AUDIO             | 6. SUBTITLE            |
| 7. SETUP             | 8. OUTPUT              |
| 9. UP & FAST FORWARD | 10. LEFT & PREVIOUS    |
| 11. RIGHT & NEXT     | 12. DOWN & FAST REWIND |
| 13. ENTER            | 14. MUTE               |
| 15. BACK             | 16. A-B                |
| 17. REPEAT           | 18. VOLUME -           |
| 19. VOLUME+          | 20. PAUSE              |
| 21. PLAY             | 22. STOP               |
| 23. PREVIOUS         | 24. NEXT               |
| 25. FAST REWIND      | 26. FAST FORWARD       |

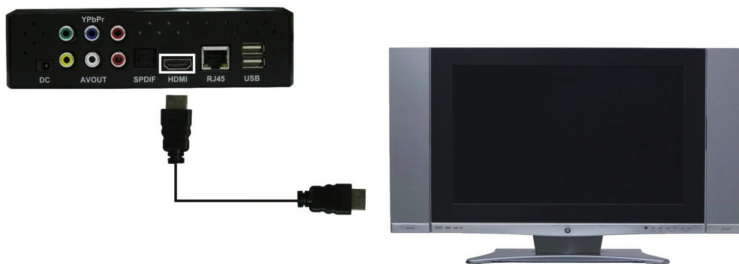
**Please note: In Photo & Music mode button 23, 24 are functional as Page Up and Down!**



## CONNECT THE MEDIA PLAYER

### HDMI connection (High Definition)

HDMI is an output with best audio and video effect which outputs digital video and audio composited at the same time. Connect the HDMI cable to the output of the EnVivo Full HD Mediaplayer and to the HDMI input on your TV. Select HDMI mode on the TV and you will now see the user interface of the Mediaplayer.



1. Plug an HDMI cable into the HDMI connector on the EnVivo HD Media Player.
2. Plug the opposite end into the HDMI port on your TV or audio/video system (if available).
3. Select the appropriate TV input source.

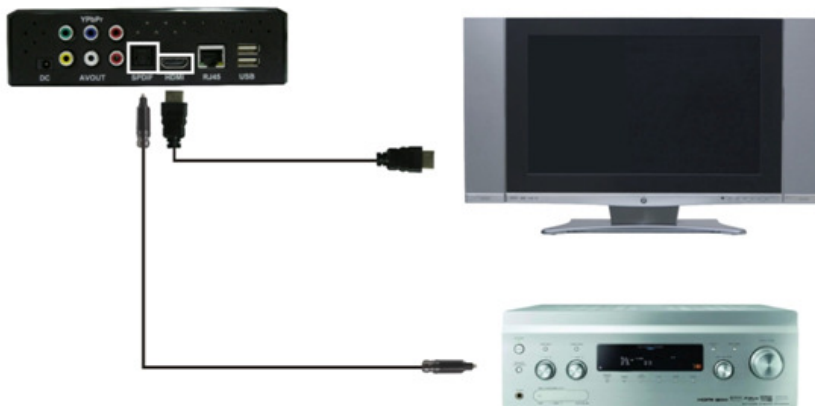


### Home theater HDMI connection (High Definition)



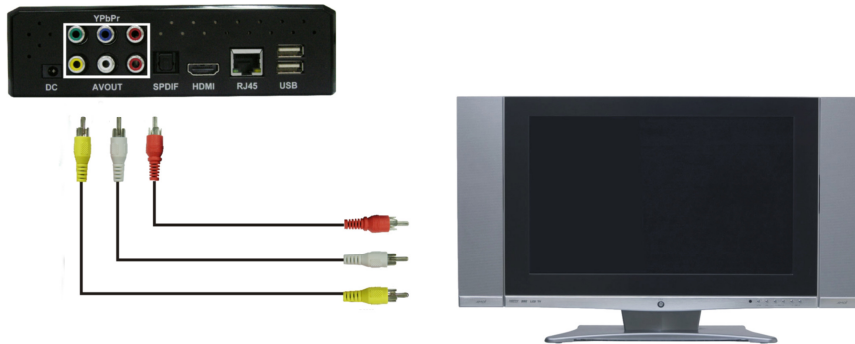
1. Plug an HDMI cable into the HDMI connector on the EnVivo HD Media Player.
2. Plug the opposite end into the HDMI In port on your Home theater.
3. Plug an HDMI cable into the HDMI Out port on your Home theater.
4. Plug the opposite end into the HDMI port on your TV (if available).
5. Select the appropriate TV input source.

### Home theater optical connection (High Definition)



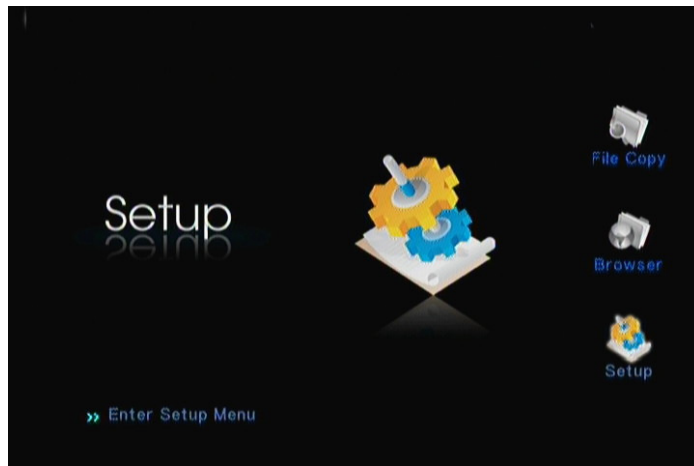
1. Plug an HDMI cable into the HDMI connector on the EnVivo HD Media Player.
2. Plug the opposite end into the HDMI In port on your TV.
3. Plug an optical cable into the SPDIF port on your EnVivo HD Media Player.
4. Plug the opposite end into the optical port on your Home theater.
5. Select the appropriate TV input source.

## Composite connection



- 1 Plug the yellow (video), red (right audio), and white (left audio) connectors into their respective ports on the HD Media Player.
- 2 Plug the opposite ends into the composite input ports on your TV, yellow to yellow, red to red, and white to white.
- 3 Select the appropriate TV input source.

## SETUP MANUAL



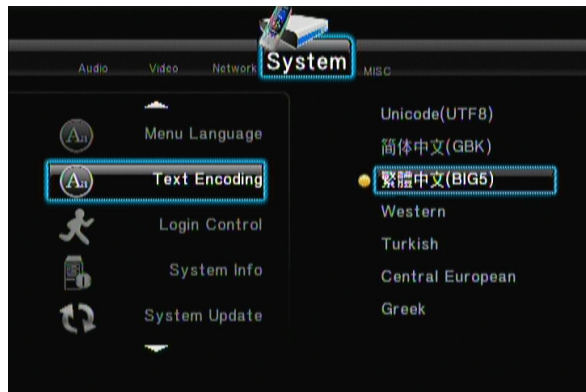
Select "Setup" option or directly press the "Setup" button on the remote control to enter the setup menu. It is possible to configure Photo, Audio, Video, Network and System. Select any option by pressing "→" and "←" on the remote control, and press OK to confirm or press "Return" to exit. Press the "Setup" button again on the remote control to exit from setup menu.

## SYSTEM SETTINGS

1. Menu Language: Choose the main language.



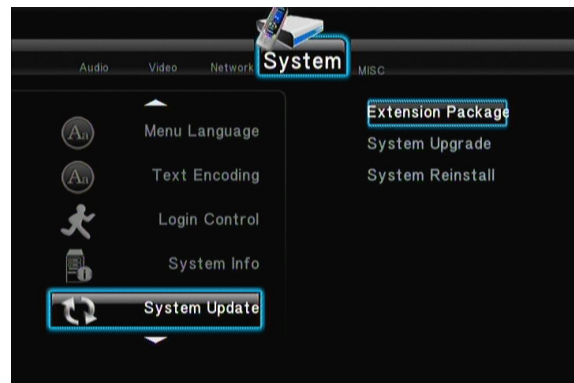
2. Text Encoding: Choose the subtitle language.



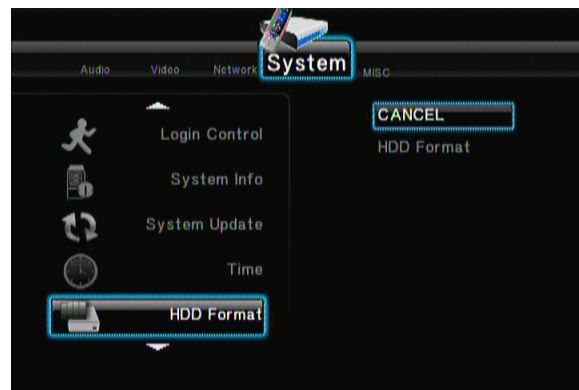
3. System Info: Check system firmware version.



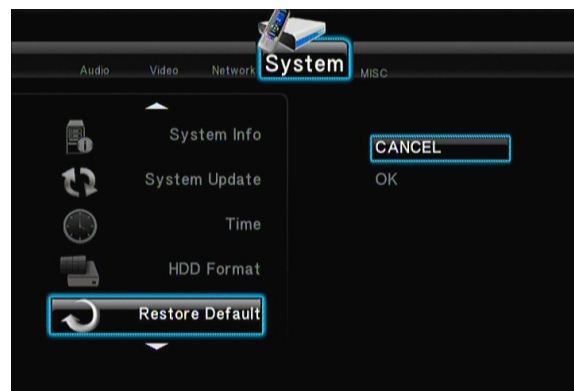
4. System Update: Upgrade firmware.



5. HDD Format: Format the Hard Disk.

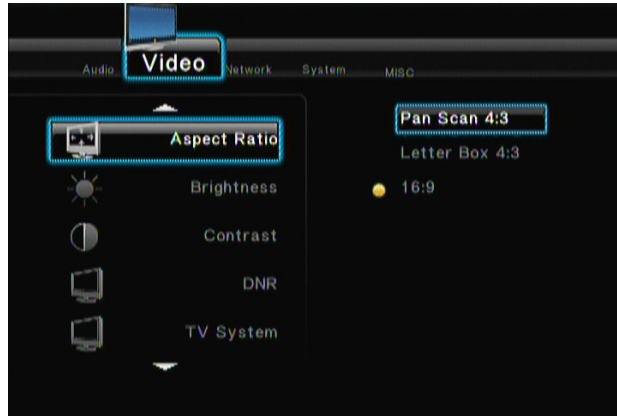


6. Restore Default: Restore to default setting.



## VIDEO SETTINGS

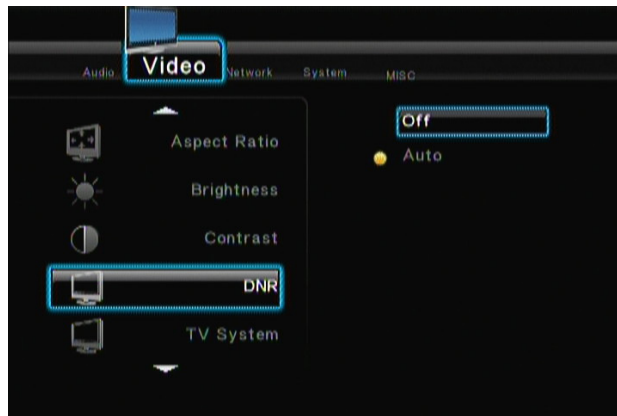
1. Aspect Ratio: Select to set ratio 4:3 or 16:9.



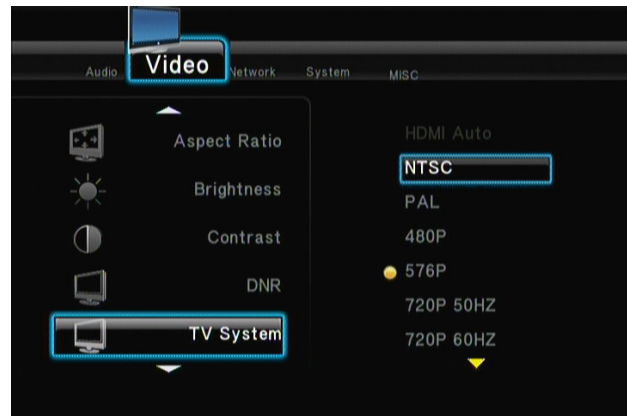
2. Brightness: Adjust brightness range 0~50.



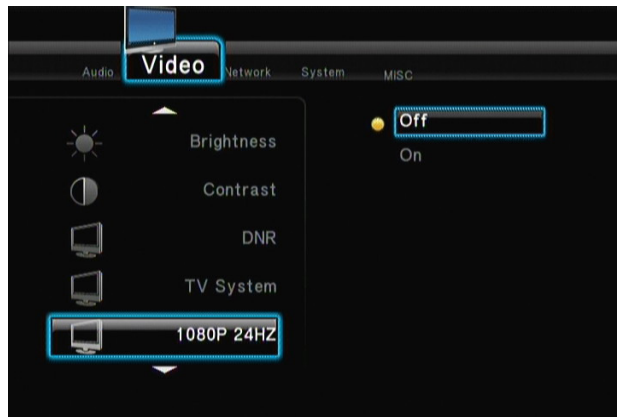
3. DNR: Select off or Auto.



4. TV System: Select resolution.



5. 1080P 24Hz: Select 1080P 24Hz on or off.

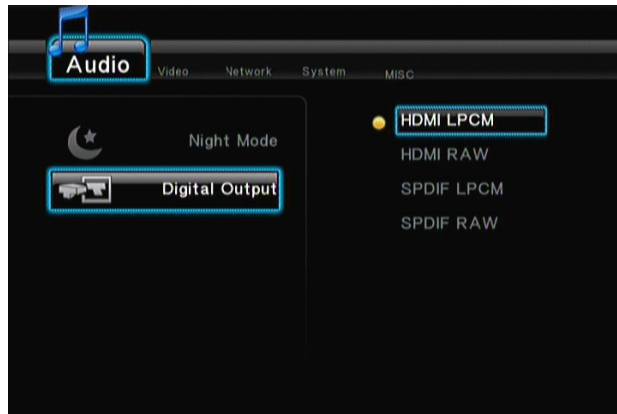


## AUDIO SETTINGS

1. Night Mode: Select the Night Mode will auto adjust the volume and brightness .



2. Digital Output: Select HDMI or SPDIF audio output .

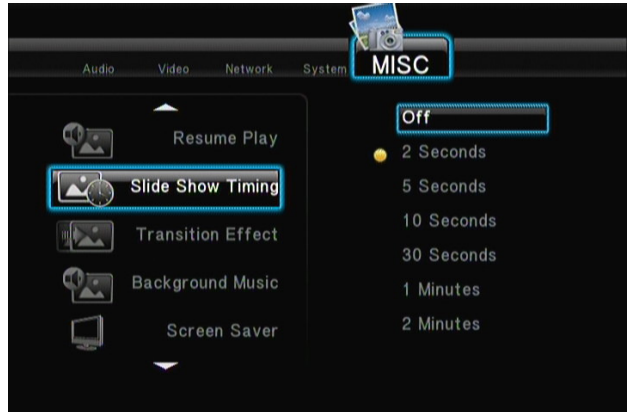


## MISC settings

1. Resume Play: Select on or off.



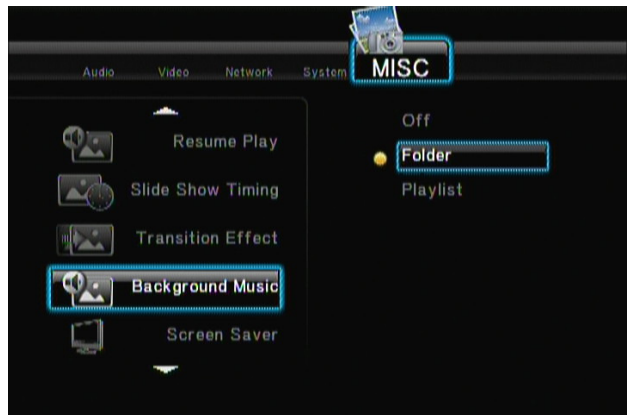
2. Slide Show Timing: Select different times for your favorites.



3. Transition Effect: Select the effect on PHOTO mode.



4. Background Music: Play background music on PHOTO mode.



5. Screen Saver.



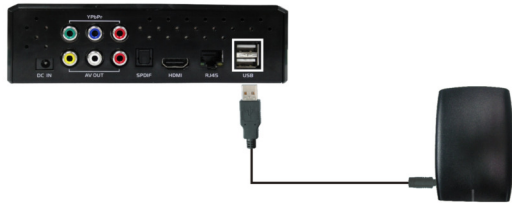
6. Movie Preview: Preview movie on file mode.



## Connecting a USB device

You are now ready to enjoy the full potential of the EnVivo Media Player. Please follow the steps below.

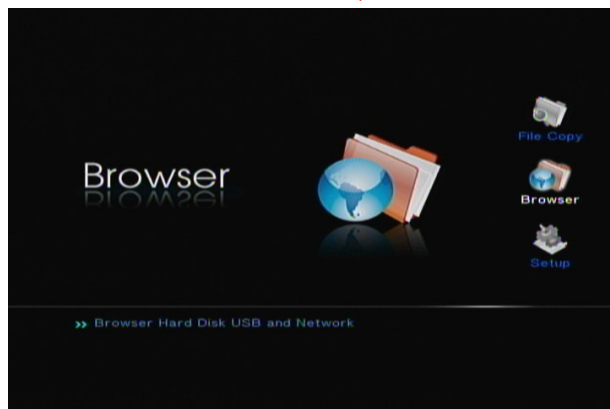
1. Transfer your favorite content from your computer to your external USB device.
2. Connect the USB device to one of the USB ports on the back of your EnVivo HD Media Player.
3. You are now ready to enjoy the content from your USB device.



## Using the EnVivo Media Player

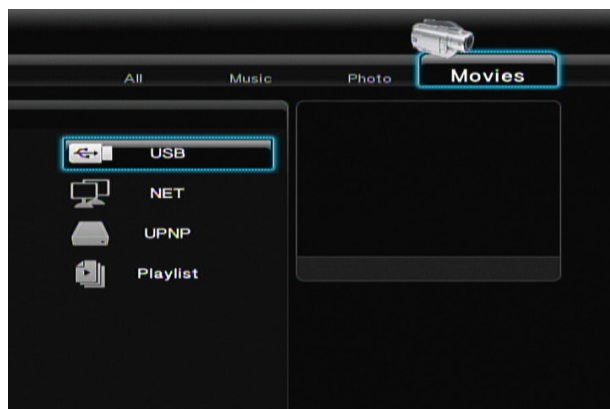
When an external USB device is connected to the EnVivo Media Player you can browse the content.

1. Choose the Browser and press "ENTER"



## Watching Video

1. Select USB and choose "All" or "Movies" press



2. Choose the video file you want to watch and "ENTER"



## Playing Music

2. Select USB and choose "All" or "Music"

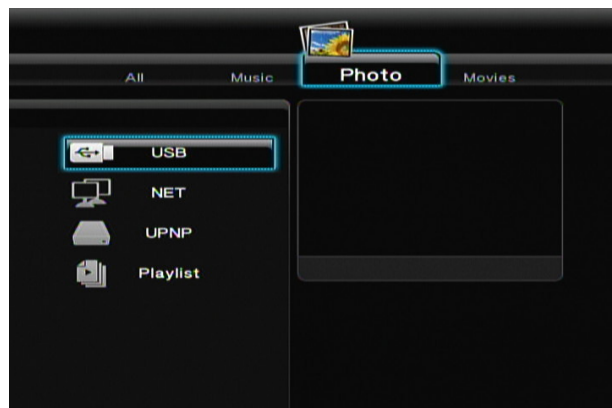


2. Choose the music file you want to listen to and press "ENTER"



## Viewing Photos

3. Select USB and choose "All" or "Photo"



2. Choose the photo file you want to watch and press "ENTER"



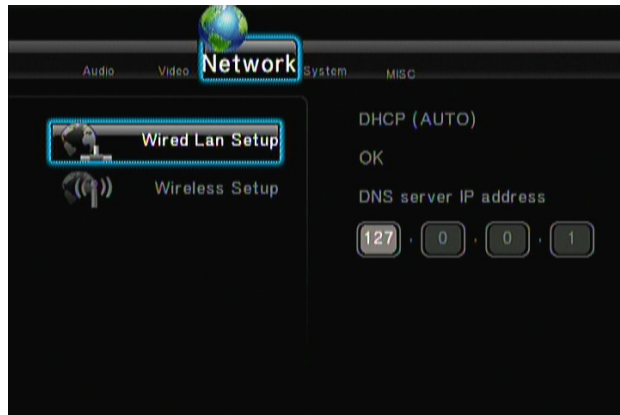
## NETWORK SETTINGS





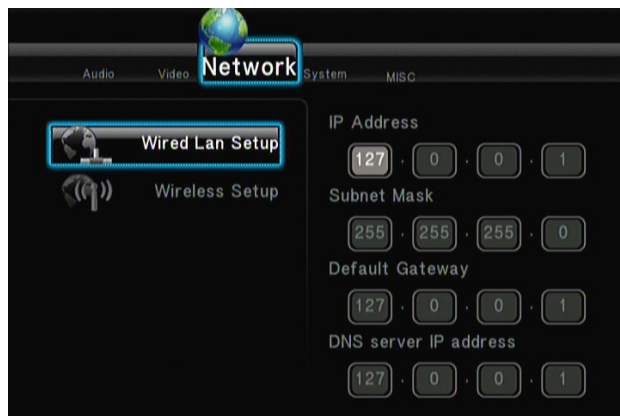
## Wired Lan Setup

Select “Network” and enter “Wired Network Setting”. You can choose automatic or manual mode to do the setting.



### DHCP IP (AUTO): To get the IP address of the domain name server automatically

Select DHCP and then choose “OK” according to the operation clues. The player can search and get IP addresses automatically. If the connection is successful, the gained IP addresses will be shown on the screen. If no IP address is shown on the screen, the connection is unsuccessful, thus you need to check the network connected to see if it has been set according to the requirements. Then try to get IP addresses again.



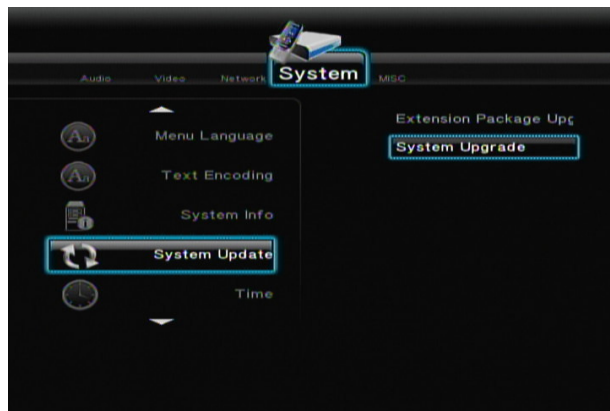
### Fix IP (manually)

Set the fixed IP address, subnet masks and default gateway and so on manually. Please input information by navigating keys and number keys and finally press “OK” to make confirmation and start testing. Parameters of the network connection of the product will be shown if the connection is successful.

1. Select “Network” in the home page of the product. If there are open groups in the sharable wire network, other sharable working group folders, such as WORKGROUP, will exist besides MY\_SHORTCUTS and MY\_NEIGHBORS. Select and enter corresponding folder, then you can play multimedia content shared in the network of the computer.

2. If there are no other sharable folders, select "MY\_SHORTCUTS" and Press "Enter" in the remote control, and choose "Add" in the open window to create a new shortcut for computers that have set network share. Input your user name, password and IP address of the appointed document server. Upon the popup window message requesting for user info, the default user name is GUEST or EVERYONE and the IP address of the appointed document server is the IP address of the computer that has set network share. There can be many sharable computers in the wire network, input the IP address of the computer you want to access.
3. If the connection is tested to be successful, save the setting. Choose the newly created shortcut to enter. Input username GUEST or EVERYONE and password, and then you can access to the appointed IP address and get the shared content in that computer.
4. The product can play multimedia documents in the shared content. If videos are played, there will be network connection speed shows on the screen. Higher speed indicates that the network is more stable and the quality of the video will be better. The product can also connect to the TV in the living room with computer in the study through through wired network connection, thus wonderful movies can be played in the large TV screen, creating a new experience of home theater.

### SYSTEM FIRMWARE UPGRADE



Please go to [www.teknihall.be](http://www.teknihall.be) and choose "Nederlands". When you are in the main page, please look for "EnVivo products". If there is a new firmware available you will find it on this page.

1. Download the new firmware into the USB device
2. Press SETUP and choose System
3. Select System Update and choose System Upgrade
4. Press ENTER
5. The EnVivo HD Media Player will start update firmware

## COMMON FAULTS AND TROUBLE SHOOTING

Faults	Causes and trouble shooting
<b>Boot-up failure</b>	The power adaptor is not properly inserted. Please properly insert the adaptor and make sure it is well connected.
	If the above trouble-shooting doesn't work, please contact an authorized maintenance station or the customer-service center.
<b>File-play failure</b>	<p>Unsupported file format.</p> <p>There is no file in the storage device.</p> <p>Make sure there is at least one file in the storage card.</p> <p>Compatible graphic formats: JPG ,BMP,PNG,GIF.</p> <p>Compatible audio formats: MP3, WMA,WAV and AAC, Dolby digital AC3.</p> <p>Compatible video formats: MPEG1 (DAT, MPG), MPEG2 (VOB, MPG, TS), MPEG4 (AVI, DIVX, XVID, MP4), WMV, MOV, MKV.</p>
<b>No image on TV</b>	<p>The video cable is not properly inserted. Please properly insert the video cable and make sure it is properly connected to the TV.</p> <p>The output signal of the player does not match the signal source of the TV. Press "Video" on the remote control to switch video output until there is image.</p> <p>If the above trouble shooting does not work, please contact an authorized maintenance station or the customer-service center.</p>
<b>No sound</b>	The audio cable is not properly inserted. Please properly insert the audio cable and make sure it is properly connected to the TV. If there is still no sound, please contact an authorized maintenance station or the customer-service center.
<b>The file I play is not full HD</b>	<p>In order to enjoy the full potential of HD quality, please note that will need to connect the Media Player to a full HD TV with an HDMI cable (included in the box).</p> <p>The files you play should be of full HD quality as well such as: MKV.</p>

### Verwijdering



Elektrische en elektronische apparatuur (EEE) bevat materialen, delen en inhoud die gevaarlijk kunnen zijn voor het milieu en schadelijk voor de menselijke gezondheid als afval bestaande uit elektrische en elektronische apparatuur (WEEE) niet correct wordt weggegooid.

Apparaten die gemarkeerd zijn met het WEEE logo (te zien links), zouden niet met het huishoudafval weggegooid moeten worden. Neem contact op met uw lokale autoriteit op het gebied van afvalverwerking, aangezien zij in staat zullen zijn om u details te geven over de mogelijkheden voor recycling in uw omgeving.