

USER'S MANUAL

ANALOG PLAYER | 2.5

25 ANALOG EXPERIENCE THE PLAYER



PROGRAMMING:

Robert Bocquier (version 2.x)
Nicolas Bronnec
Fabrice Bourgeois
Jean-Michel Blanchet
Christian De Jong

INDUSTRIALIZATION:

Frédéric Brun (Arturia)
Zhao Yitian (CME)

MANUAL:

Houston Haynes
Scott Stafiej
Richard Phan (French version)
Jean-Michel Blanchet (French version)
Antoine Back (French version)
Franck Blaszczyk (French version)
Tomoya Fukushi (Japanese version)
Nori Ubukata (Japanese version)
Kenta Sasano (Japanese version)

DESIGN:

Yannick Bonnefoy (Beautifulscreen)
Elisa Noual
Morgan Perrier

© ARTURIA SA – 1999-2010 – All rights reserved.
4, Chemin de Malacher
38240 Meylan
FRANCE
<http://www.arturia.com>

Information contained in this manual is subject to change without notice and does not represent a commitment on the part of Arturia. The software described in this manual is provided under the terms of a license agreement or non-disclosure agreement. The software license agreement specifies the terms and conditions for its lawful use. No part of this manual may be produced or transmitted in any form or by any purpose other than purchaser's personal use, without the express written permission of ARTURIA S.A.
All other products, logos or company names quoted in this manual are trademarks or registered trademarks of their respective owners.

Thank you for purchasing Arturia's Analog Player 2.5 / Analog Experience "The Player"!

This manual concerns two distinctive products:

- *Analog Player 2.5*, a software allowing to play and modify 1000 synthesizer sounds.
- *Analog Experience "The Player"*, a bundle of Analog Player 2.5 along with a dedicated control keyboard, the Analog Player Keyboard.

In this package you will find:

- A CD-ROM containing the Analog Player 2.5 installer for Mac OS X and Windows XP/Vista/Seven
- A registration card (credit card format) including the Soft-eLicenser activation code and Arturia's online registration code (license number).
- The User's Manual for the Analog Player 2.5 software and the Analog Player Keyboard.
- An Analog Player Keyboard (*Analog Experience "The Player" only*)
- An USB cable (*Analog Experience "The Player" only*)

Carefully store your registration card!

In order to actually use the software, you have to register, and then authorize, your virtual instrument. By registering, you identify yourself as the legitimate owner and thus will be sure to receive the latest news and updates for your instrument.

The Serial Number and Unlock Code are required to register & authorize Analog Player 2.5, so these codes are the real value of your product.

See chapter 3 for more information about the authorization process.

Special Message Section

The MIDI keyboard uses USB or an external power adapter. Do not connect this product with any power supply or adapter than the one described on this manual specifically recommended by Arturia. (See [Power supply](#) for more details)

WARNING:

Do not place this product in a place or position where one might walk on, trip over or roll anything over power or connecting cords.

The use of an extension cord is not recommended! If you must use one, make sure that the cord has the ability to handle maximum current needed by this product. Please consult a local electrician for more information on your power requirements.

This product should be used only with the components supplied or recommended by Arturia. When used with any components, please observe all safety markings and instructions that accompany the accessory products.

SPECIFICATIONS SUBJECT TO CHANGE:

The information contained in this manual is believed to be correct at the time of printing. However, Arturia reserves the right to change or modify any of the specifications without notice or obligation to update existing units.

IMPORTANT:

Always follow the basic precautions listed below to avoid the possibility of serious injury or even death from electrical shock, damages, fire or other risks.

The product used either alone or in combination with an amplifier, headphones or speakers, may be able to produce sound levels that could cause permanent hearing loss. DO NOT operate for long periods of time at a high level or at a level that is uncomfortable.

If you encounter any hearing loss or ringing in the ears, you should consult an audiologist.

NOTICE:

Service charges incurred due to a lack of knowledge relating to how a function or feature works (when the unit is operating as designed) are not covered by the manufacturer's warranty, and are therefore the owners responsibility. Please study this manual carefully and consult your dealer before requesting service.

PRECAUTIONS INCLUDE, BUT ARE NOT LIMITED TO, THE FOLLOWING:

1. Read and understand all the instructions.
2. Always follow the instructions on the instrument.
3. Before cleaning the instrument, always remove the electrical plug from the outlet, as well as the USB cable. When cleaning, use a soft and dry cloth. Do not use gasoline, alcohol, acetone, turpentine or any other organic solutions; do not use liquid cleaner, spray or cloth that's too wet.

4. Do not use the instrument near water or moisture, such as a bathtub, sink, swimming pool or similar place.
5. Do not place the instrument in an unstable position where it might accidentally fall over.
6. Do not place heavy objects on the instrument. Do not block openings or vents of the instrument; these locations are used for air circulation to prevent the instrument from overheating. Do not place the instrument near heat vent or any place of poor air circulation.
7. Only use the recommended specified AC adaptor (12V DC 500mA)
8. Make sure the line voltage in your location matches the input voltage specified on the AC power adaptor.
9. Do not open and insert anything into the instrument which may cause a fire or electrical shock.
10. Do not spill any kind of liquid onto the instrument.
11. Always take the instrument to a qualified service center. You will invalidate your warranty if you open and remove the cover, and improper assembly may cause electrical shock or other malfunctions.
12. Do not use the instrument with thunder and lightning present; otherwise it may cause long distance electrical shock.
13. Do not expose the instrument to hot sunlight.
14. Do not use the instrument when there is a gas leak nearby.
15. Arturia is not responsible for any damage or data loss caused by improper operations to the instrument.

HANDLING CD-ROMS:

Avoid touching or scratching the shiny underside (encoded surface) of the disc. Damaged or dirty CD-ROM disc may not be read properly. Keep your CD-ROMs clean, using a commercially available CD cleaner.

Table of Contents

1	INTRODUCTION	8
1.1	HISTORY	8
1.2	HERE AND NOW	9
1.3	TAE®	9
1.3.1	<i>Aliasing-free oscillators</i>	9
1.3.2	<i>A better reproduction of analog oscillator waveforms</i>	10
1.3.3	<i>Direct Filter Circuit Modeling</i>	11
2	INSTALLATION.....	13
2.1	WINDOWS INSTALLATION (XP/VISTA/7)	13
2.2	MAC OS X INSTALLATION.....	15
3	AUTHORIZATION	17
4	USING ANALOG PLAYER 2.5.....	20
4.1	PREFERENCES	20
4.2	TOOL BAR	20
4.3	USING THE PRESET MANAGER.....	22
4.3.1	<i>Instrument</i>	22
4.3.2	<i>Type</i>	23
4.3.3	<i>Characteristics</i>	23
4.3.4	<i>Entries Found</i>	24
4.3.5	<i>Filter Options</i>	24
4.3.6	<i>Current Preset information</i>	25
4.3.7	<i>Organization</i>	26
4.4	KEYBOARD VIEW	27
4.4.1	<i>Virtual keyboard</i>	27
4.4.2	<i>The wheels</i>	27
4.4.3	<i>Filter</i>	28
4.4.4	<i>FX MIX (Effects Mix)</i>	28
4.4.5	<i>ADSR knobs</i>	29
4.4.6	<i>SNAPSHOTS buttons</i>	29
4.4.7	<i>MIDI control</i>	30
5	MODES OF OPERATION.....	32
5.1	STANDALONE AND MIDI CONFIGURATION.....	32
5.1.1	<i>Launching the standalone application</i>	32
5.1.2	<i>Preferences configuration</i>	32
5.2	VST.....	33
5.2.1	<i>Installation</i>	33
5.2.2	<i>Instrument use in the VST mode</i>	33
5.3	AUDIO UNIT (MAC OS X ONLY).....	35
5.3.1	<i>Installation</i>	35
5.3.2	<i>Use in Logic Pro</i>	35
5.3.3	<i>Use in Digital Performer</i>	36
5.4	PRO TOOLS	36
5.4.1	<i>Installation</i>	36
5.4.2	<i>Utilization of the plug-in</i>	36
6	ANALOG PLAYER KEYBOARD (ANALOG EXPERIENCE “THE PLAYER” ONLY)	39
6.1	FRONT PANEL OVERVIEW	39
6.1.1	<i>The keyboard</i>	39

6.1.2	Shift button.....	40
6.1.3	Level/search rotary encoder	40
6.1.4	Preset/octave buttons.....	40
6.1.5	Snapshot/save buttons.....	41
6.2	JOYSTICK.....	41
6.2.1	Pitch bend.....	41
6.2.2	Modulation.....	41
6.3	SYNTHESIS SECTION	41
6.3.1	Filter setting rotary encoders	41
6.3.2	FX Mix rotary encoders.....	42
6.3.3	Alternate ADSR function.....	42
6.4	REAR PANEL OVERVIEW	42
6.4.1	MIDI connections	42
6.4.2	Power supply	43
6.5	BASIC MIDI CONTROL.....	43
7	MIDI IMPLEMENTATION (ANALOG EXPERIENCE “THE PLAYER” ONLY)	44
7.1	USING THE KEYBOARD	44
7.2	WHAT IS MIDI?.....	44
7.3	MIDI IMPLEMENTATION CHART	45
7.4	MIDI CONTROLLERS LIST	46
7.5	SYSTEM EXCLUSIVE MESSAGES DETAIL.....	47
8	MIDI CONTROL CENTER (ANALOG EXPERIENCE “THE PLAYER” ONLY).....	48
8.1	LAUNCHING THE MIDI CONTROL CENTER.....	48
8.2	CHANGING MIDI SETTINGS	49
8.2.1	Global settings.....	49
8.2.2	Individual control settings	49
8.2.3	Saving settings to the keyboard.....	50
9	ARTURIA ANALOG PLAYER 2.5 – LEGAL INFORMATION	51
9.1	SOFTWARE LICENSE AGREEMENT	51
9.2	FCC INFORMATION (USA).....	55
9.3	CANADA	55
9.4	EUROPE.....	56

1 INTRODUCTION

1.1 History

In early 2001, Arturia began working on advanced algorithms for the digital emulation of analog circuit audio characteristics. They are known as TAE[®], standing for True Analog Emulation. In non-technical language, this is an unprecedented way of creating the very unique sound one finds in a synthesizer such as the Moog Modular. Nearly a year after they began work on the algorithms, Arturia was ready for feedback. At the 2002 NAMM show in California, Arturia shared an early version of what would later be the Moog Modular V with the renowned maker of the original Moog synthesizer, Doctor Bob Moog.

In seeking insight from sound production experts, such as Dr. Moog, as well as avid synthesizer users, Arturia was able to ensure the quality of the instruments they made; so well in fact the Dr. Moog himself endorsed the Moog Modular V. The launch of this sound powerhouse was an instant success, winning awards from several top magazines, and leading to the development of other synth recreations.

Shortly thereafter, Arturia started receiving many requests from musicians, producers and bands. Many of them explained how they were planning to replace their original hardware synthesizers by virtual instruments. Artists around the globe were beginning to see the advantages of a software alternative to hardware-based synthesizers.

The CS-80V emulated the legendary Yamaha CS-80, considered by many as "the ultimate polyphonic" synthesizer, and was launched at the AES 2003 in New York. Imagine some of your favorite music from diverse artists such as Keith Emerson or Stevie Wonder, and you'll get an idea of what the CS-80V is capable of.

Released at the NAMM 2004, the Minimoog V was our recreation of the Minimoog, quite possibly the most famous synthesizer ever. The original Minimoog has been big on the music scene since the 70's; still today the Minimoog has a large following thanks to its many sound capabilities.

The ARP 2600 V was launched at the NAMM 2005 in Anaheim. This is a faithful reproduction of the ARP 2600 and is great for just about any sound one might wish to create: everything from drum n' bass stabs to Star Wars' R2-D2 sounds have been made with the Arp.

At the Winter NAMM Show 2006, ARTURIA announced the release of its seventh product: the Prophet V. This powerful hybrid gives you two instruments in one: it combines the warmth of the legendary Prophet 5 programmable analog synth with the unique Vector Synthesis textures of the digital Prophet VS.

And finally, at the summer 2007 NAMM Show, Arturia launched the Jupiter-8V. In terms of sonic possibilities, it complemented its "Arturia siblings" by bringing something different. The Jupiter-8 V was capable of creating very versatile sounds. You could easily make 'fat' or 'Crystal' sounds with it. In fact, the Jupiter-8 sounded the way it looked, 'sleek and polished'.

The electro-pop community became quickly convinced by the qualities of the original Jupiter-8. 'Relax', by Frankie Goes to Hollywood was produced incorporating a Jupiter 8, and players such Vince Clarke, John Foxx, and Martyn Ware also used it abundantly. The path to classic status of the Jupiter started there.

Other artists that have used The Jupiter-8 include: Howard Jones, Tangerine Dream, Underworld, Jean Michel Jarre, Depeche Mode, Prince, Gary Wright, Adrian Lee, Heaven 17, Kitaro, Elvis Costello, Tears for Fears, Huey Lewis and the News, Journey, Moog Cookbook, Yes, Devo, Freddy Fresh, Simple Minds, Jan Hammer and BT.

1.2 Here and Now

Analog Player 2.5 brings you the full spectrum of sounds from all of the above instruments in an easy to use, no-hassle interface. As you will soon see in exploring the instrument yourself, a single instrument gives you your pick from the most complete synthesis sound palette one could ask for: the great bass of the Moog Modular, the brass and strings of the Prophet, the pads and FX of the ARP 2600, etc.

If you have never played a real synth, or even if you don't know what a synthesizer is, it doesn't matter; you will be glad to have invested in such a powerful instrument once you hear the difference Analog Player 2.5 makes in your studio.

1.3 TAE®

TAE®, True Analog Emulation, is Arturia's outstanding technology dedicated to the digital reproduction of analog circuits used in vintage synthesizers.

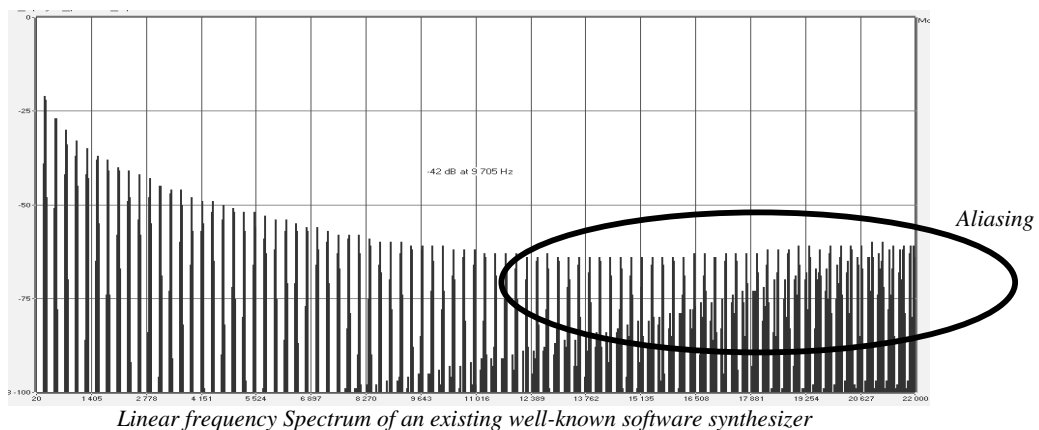
When implemented in software code, TAE®'s algorithms guarantee authentic emulation of hardware specifications. This is why Analog Player 2.5, and all of Arturia's virtual synthesizers, offer an unparalleled quality of sound.

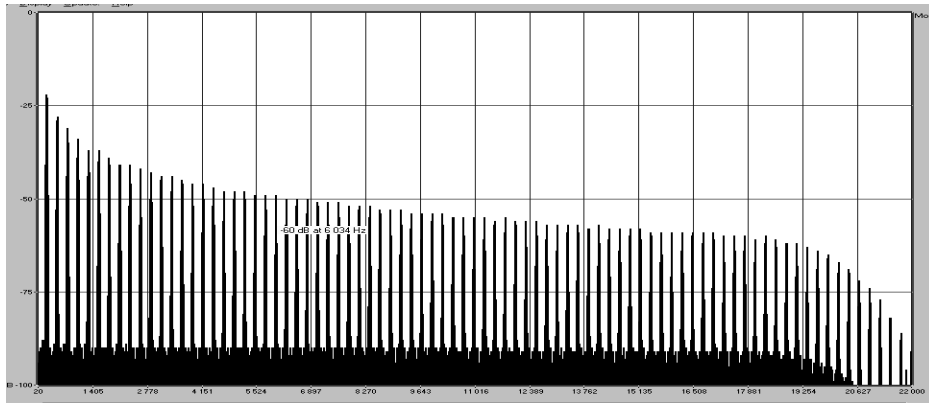
TAE® combines three major advances in the domain of synthesis:

1.3.1 Aliasing-free oscillators

Standard digital synthesizers produce aliasing in high frequencies, and also when using Pulse Width Modulation or FM.

TAE® allows the production of totally aliasing-free oscillators in all contexts (PWM, FM...), and at no extra CPU cost.

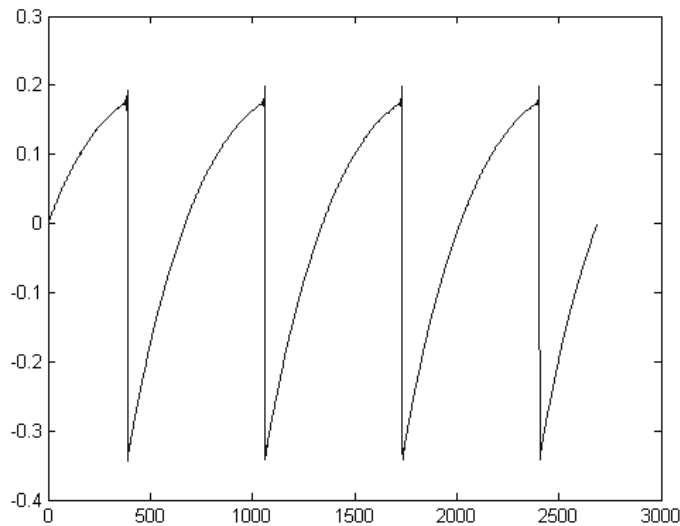




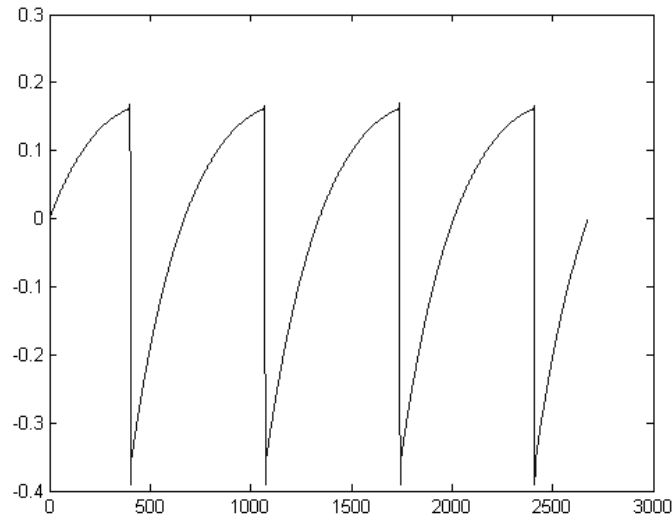
Linear frequency spectrum of the Analog Player 2.5 oscillator made with TAE[®]

1.3.2 A better reproduction of analog oscillator waveforms

The waveforms produced by the oscillators in analog synthesizers are marked by the presence of a capacitor in the circuits. The discharge of the capacitor results in a light bend in the original waveform (notably for saw tooth, triangular and square waveforms). TAE[®] reproduces the result of this capacitor discharge in software. This is the analysis of a waveform from one of the 5 original instruments that Arturia’s software emulates, followed by one made by Analog Player 2.5. They are both equally deformed by the low-pass and high-pass filtering.



Temporal representation of a “saw tooth” waveform of a hardware synthesizer



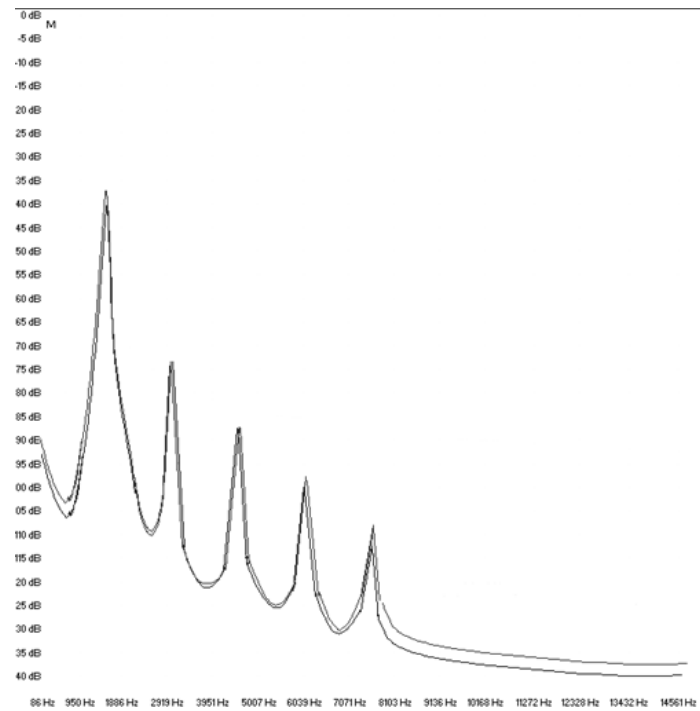
Temporal representation of a “saw tooth” waveform reproduced by TAE®

What’s more, the hardware analog oscillators were unstable. In fact, their waveform varies slightly from one period to another. If we add to this the fact that the starting point for each period (in Trigger mode) can vary with the temperature and other environmental conditions, we see why vintage synthesizers have such a typical sound.

TAE® reproduces the instability of oscillators, bringing a fatter and “bigger” sound.

1.3.3 Direct Filter Circuit Modeling

Due to advances in computer processing power, Analog Player 2.5 can now employ direct filter modeling techniques to achieve unprecedented accuracy in the emulation of a hardware synthesizer’s filter. By modeling the operation of the individual hardware components of the filter circuit, the warm nuances synonymous with analog sounds are recreated. This graph is a frequency domain plot as just a single example of direct circuit modeling in action; it shows the generation of harmonics at multiples of the resonant frequency when the filter is in self oscillation mode, for both one of Arturia’s virtual instruments and what it is emulating. These harmonics are characteristic of hardware synthesizer filters and are due to the non-linear behavior inherent to its analog circuitry. The harmonics generated add to the richness and warmth of the sound produced by the filter. As a result of the direct recreation of this analog circuitry, the same characteristics of the sound are present, thus giving the user a truly analog sound.




Comparison of harmonics generated by the filter circuits in self oscillation of Analog Player 2.5 and a hardware synthesizer

2 INSTALLATION

2.1 Windows installation (XP/VISTA/7)

Insert the CD-ROM into the drive. Explore the contents of the CD-ROM, double click on the icon named **Analog Player 2.5 Setup.exe**.

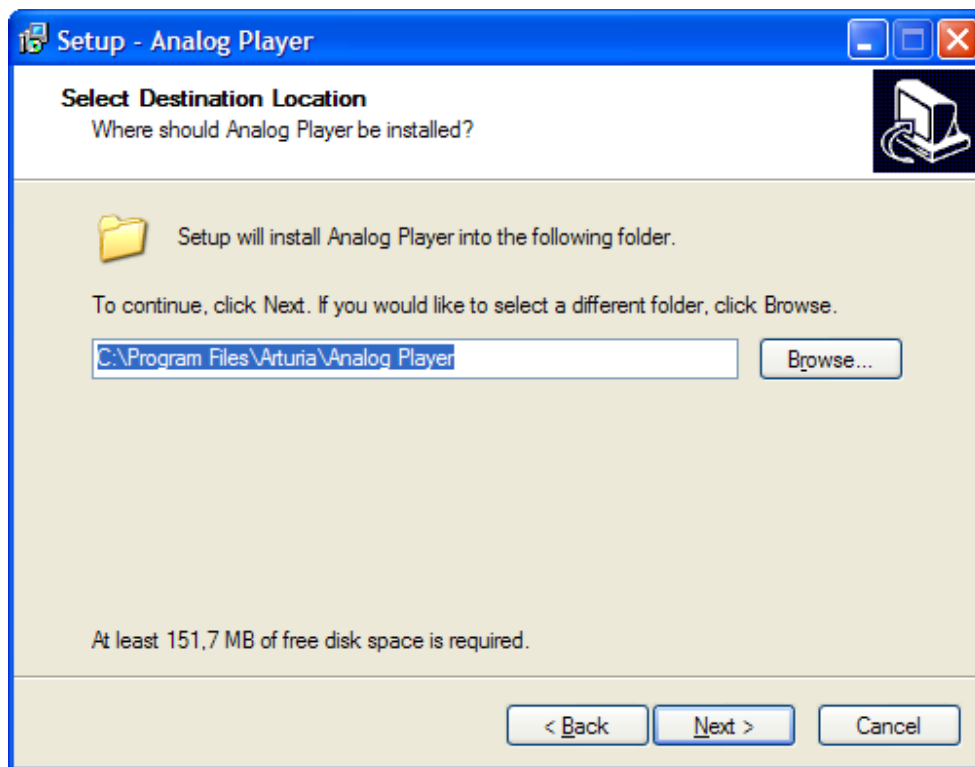
 *It is always a good idea to check if a newer version has been released online, if so it is highly recommended to install directly from this latest update: <http://www.arturia.com/updates>*

At the first step of the installation, choose the destination folder for the Analog Player 2.5 installation. By default, it will be installed in this location:

C:\Program Files\Arturia\Analog Player

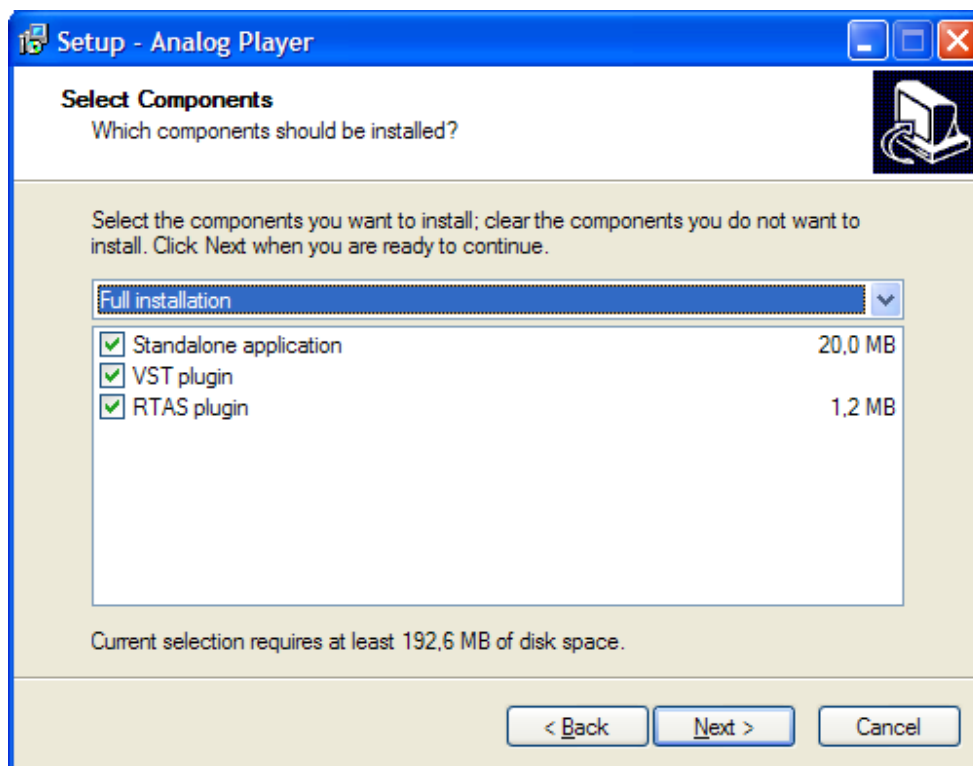
You can change the destination with the Browse button.

If you own a previous version (or a "light" version), this version will be overwritten.



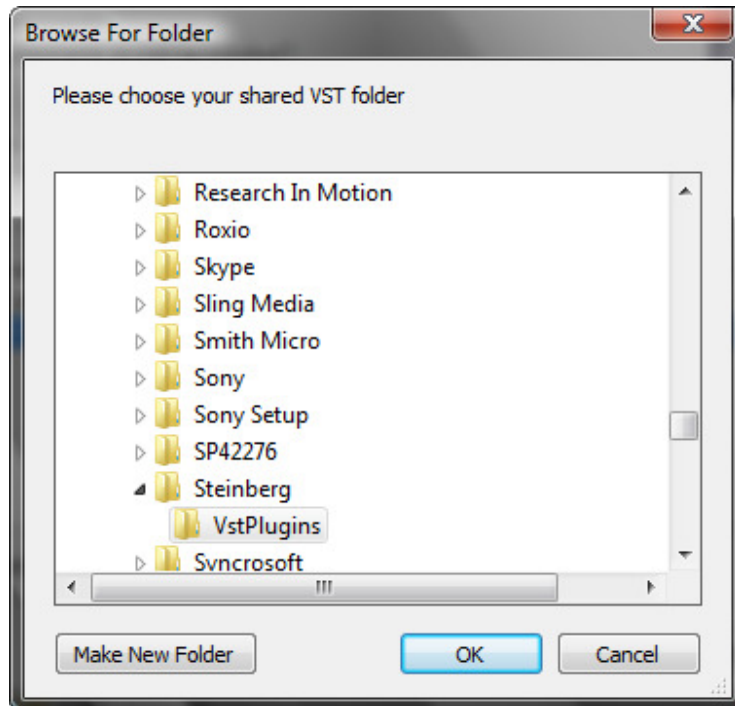
Choose the installation folder

Analog Player 2.5 will be installed as a standalone application. The following stage will let you choose to install Analog Player 2.5 as a plug-in. To do this, choose the protocol(s) that you wish to use (VST or RTAS).



Choice of protocols

For the VST protocol, you must choose an installation folder in order for the host application to use Analog Player 2.5 as a plug-in. If you do not know how to make this choice, go to Chapter 5.




Choice of VST plug-in installation folder

The installation program now has enough information to complete the installation. When the installation process is completed, please proceed to authorization step (Chapter 3).

2.2 MAC OS X installation

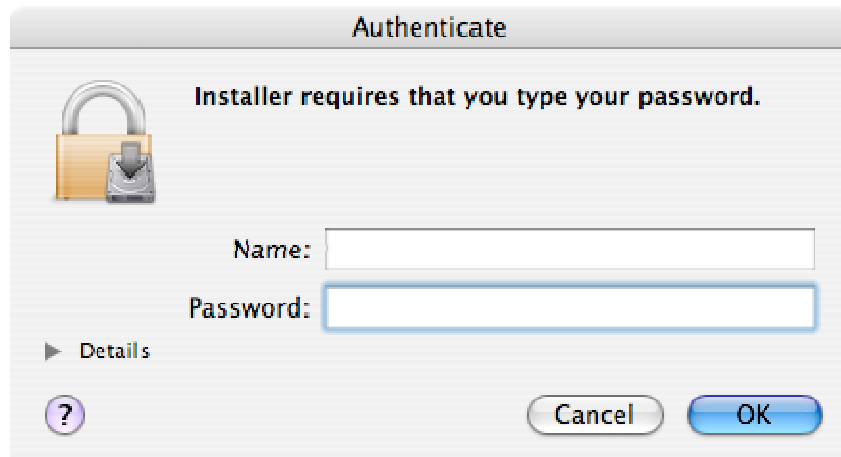
Insert the CD-ROM into the drive. Explore the content of the CD-ROM, then double-click on the icon named Analog Player 2.5 Setup Mac.

 *It is always a good idea to check if a newer version has been released online, if so it is highly recommended to install directly from this latest update:* <http://www.arturia.com/updates>

Follow these steps:

- read and accept the End User License Agreement;
- select a destination.

When prompted, enter the administrator name and password of your computer in the authentication window.



Authentication window

Analog Player 2.5 will next be installed as a standalone application, but also as VST, AU and RTAS plug-ins.

The installation program now has enough information to complete the installation. When the installation process is completed, please proceed to authorization step (Chapter 3).

3 AUTHORIZATION

Now that your Analog Player 2.5 has been installed, you have to authorize the synthesizer.

The first step is to register your software in order to obtain the activation code that will enable you to actually use the software.

You should have handy the license serial number of Analog Player 2.5 and the unlock code (these are integral part of the software and are printed on a small plastic card)

Connect your computer to the Internet, and go to this web page:

<http://www.arturia.com/login>

If you don't have any Arturia account yet, please create one now:

Want to create an account* ? [Click here](#)

This will take you to this form:

Create your account here

* Indicates required fields

Firstname: *	<input type="text"/>
Lastname: *	<input type="text"/>
Email address: *	<input type="text"/>
Confirm email: *	<input type="text"/>
Password: *	<input type="password"/>
Confirm password: *	<input type="password"/>
Address:	<input type="text"/>
	<input type="text"/>
City:	<input type="text"/>
State:	<input type="text"/>
Zip/Postal code:	<input type="text"/>
Country: *	<input type="text"/>
I wish to receive the Arturia newsletter:	<input checked="" type="checkbox"/>

If you already have an account made, simply log in:

Already have an account ?

Email address:

Password:

Remember me:

[Forgot my password?](#)

Once you are logged into your account, you can register your Analog Player 2.5 and request your activation code.

Go to the "My Registered Products" section of your account and click on the "Add" button:

My Registered products & Syncrosoft Activation Codes

Product	Serial number	Activation code	Date / Action
Minimoog V	01-81178311	2 0 Activation codes for this license.	<input type="button" value="Get your FREE UPDATE"/>

In the form that appears, select "Analog Player" from the drop down menu, and key in your synthesizer serial number and unlock code (as written on the registration card):


Add a license

Product: *

Serial number: * - - -

Please use : XXXX-XXXX-XXXX-XXXX for Software
XX-XXX-XXX-XXX for Hardware

Unlock Code: XXXXXXXX - **Only if printed on yo**



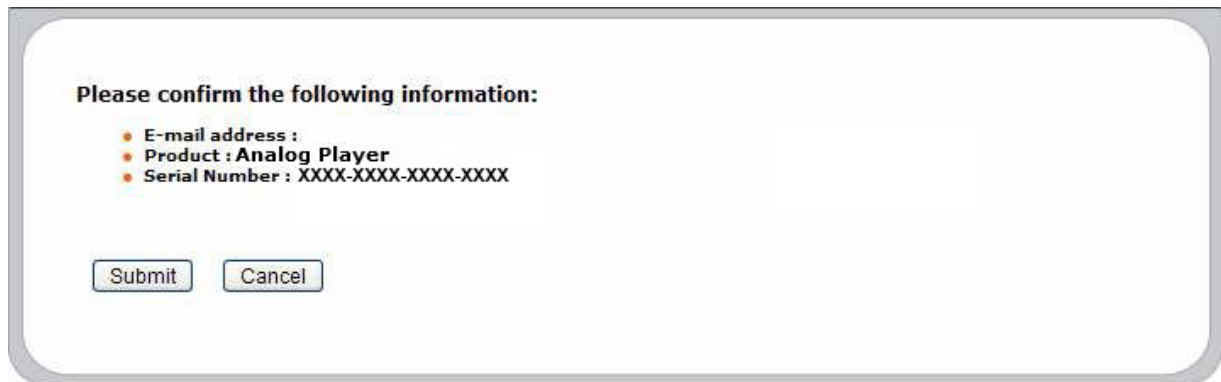
ANALOG FACTORY | 2.5

Serial Number XXXX-XXXX-XXXX-XXXX

Unlock Code XXXXX

Arturia
DIGITAL INSTRUMENTS

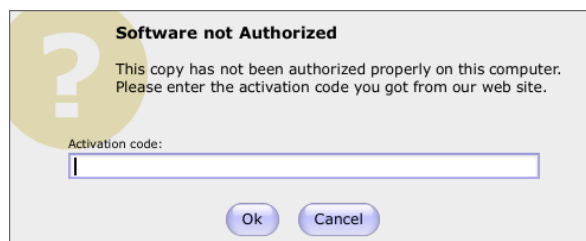
You should then see the confirmation screen:



And finally there is a screen from which you can copy the **activation code**. The very same information is sent to you by email as a backup.

Now launch Analog Player 2.5 to display the authorization window:

Copy the **activation code** and paste it in the window that shows when you launch the Analog Player synthesizer:

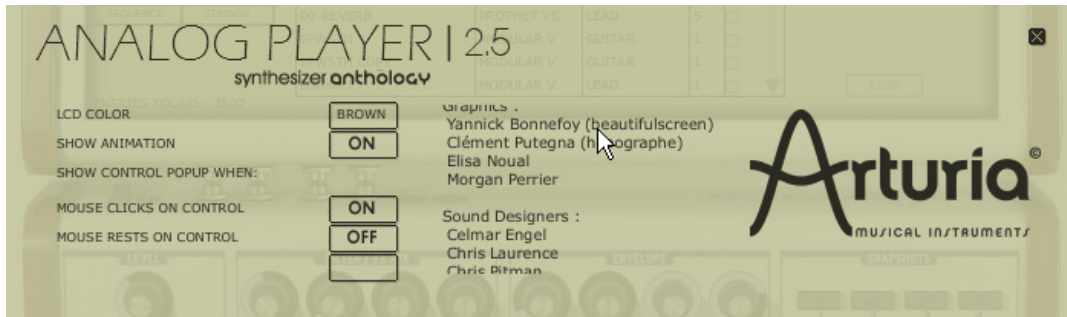


Activation window

If your activation code has been entered correctly, the synthesizer will launch.

4 USING ANALOG PLAYER 2.5

4.1 Preferences



The "Preferences" window

Preferences are set by clicking on the **Analog Player 2.5** logo on the virtual keyboard.

The following options are available:



LCD COLOR	This function offers a choice between several available colors/combinations on the Preset Manager screen.
SHOW ANIMATION	Choose to activate or deactivate the animation (keyboard and Preset Manager folding).
SHOW CONTROL POPUP WHEN MOUSE CLICKS ON CONTROL	A small popup window appears each time that the mouse clicks on a modifiable parameter in order to give information about the parameter and modifiable values. Choose ON to activate this preference, or OFF to deactivate it. Default is ON .
SHOW CONTROL POPUP WHEN MOUSE RESTS ON CONTROL	A popup window will appear when the mouse remains idle on a modifiable parameter, giving information about the parameter and the modifiable values. Choose ON to activate this preference, or OFF to deactivate it. Default is ON .

4.2 Tool Bar



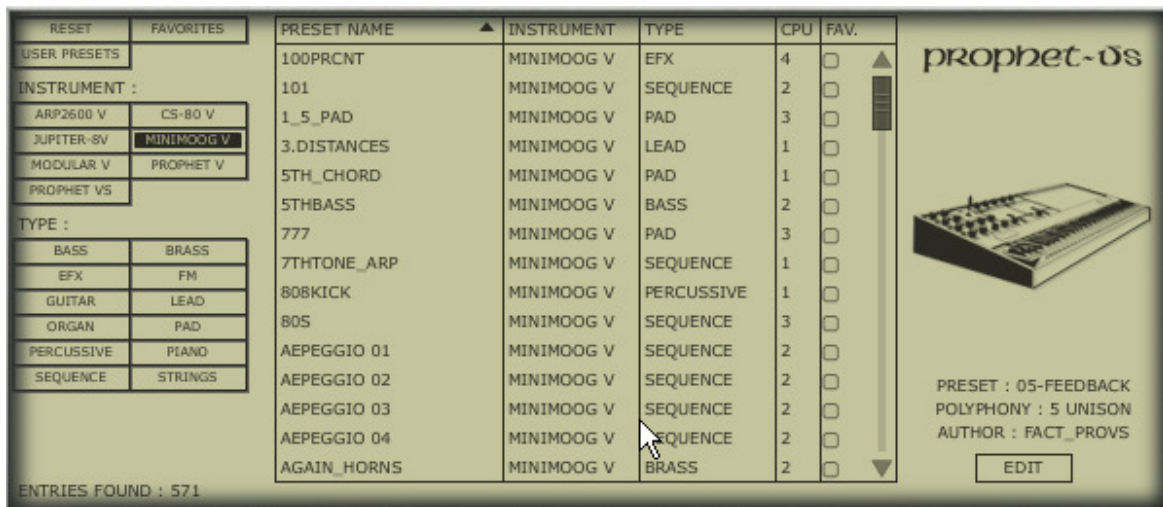
Tool Bar

The tool bar consists of a set of essential icons, organized from left to right, allowing the user to see or have access to:

PRESET NAME INSTRUMENT TYPE	Name of the current preset, name of the Instrument, and the Type of instrument.
SAVE AS	<p>Saving Presets (sound programming). This function allows the user to save a preset which has been modified, including giving it a new name. This new preset will be a USER Preset and not a FACTORY Preset (which cannot be modified). When one chooses the "Save As" function, a window opens allowing the user to name and classify the new preset according to TYPE and CHARACTERISTICS).</p> <p> <i>So that the foundations of the instrument remain intact, it is not possible to save or delete a Factory Preset (Presets that come installed with the software). However, the Save As function allows the modification and saving of a Preset under another name that the user chooses.</i></p>
SAVE	Save changes to the current USER Preset.
DELETE	You can delete any USER preset with this function.
IMPORT	<p>Permits the user to import a document containing the USER Presets for Analog Player (allowing you to add Presets to your personal collection). The document referred to is called "*.afpresets". To import, click on IMPORT and then the local "*.afpresets" document in your computer. If the document(s) being imported have the same name as existing Presets, the following options will appear:</p> <ul style="list-style-type: none"> ▪ "Duplicate" leaves two presets with the same name listed in the Preset Manager. ▪ "Replace" will replace the current preset with the same name with that of the one being imported. ▪ "Skip" will stop the new preset from being imported.
EXPORT	<p>Choose this function to export USER Presets. Click on "Export", choose the destination of the "*.afpresets" document which will be created, and give it a name.</p> <p> <i>So that the foundation of Analog Player remains intact, it is not possible to Import/Export Factory Presets.</i></p>
MIDI IN	Light signaling MIDI activity (will illuminate when a note from an external MIDI controller or keyboard is pushed)
MIDI CH.	This drop-down menu offers the channel choice from which Analog Player receives MIDI information. Default is OMNI (responds to data on all MIDI channels).
TUNE	General settings for the tuning of Analog Player. This allows the user to finely tune the global tuning of the instrument.
VIEW	Choose the view of the interface. The selection buttons offer the choice to View all of Analog Player, only the Preset manager, or only the Keyboard.

4.3 Using the Preset Manager

Presets account for the various sounds of Analog Player: there are 1000 of them! A preset contains all the setting information of the different controllers necessary to reproduce a sound. In Analog Player, there are various ways in which the Presets are classified and filtered in order to simplify preset management and find the appropriate sounds for a song; one won't have to search 1000 presets to find the desired sound. These filters are listed on the left of the Preset Manager window and presented as follows: Instrument, Type, and Characteristics. Let us take a moment to look at each.



Preset Manager

4.3.1 Instrument

“Instrument” refers to one of the 7 instruments from which Analog Player draws its sound. The instruments include:

- Moog Modular V
- CS-80 V
- Minimoog V
- ARP 2600 V
- Prophet V
- Prophet VS
- Jupiter-8V

If, for example, one clicks on CS-80 V, the Preset Manager will provide a list of presets uniquely from the CS-80 V. But one can also chose to browse for more than one Instrument; that means the user can look for sounds from CS-80 V and ARP 2600 V at the same time by selecting both instruments in the "Instrument" frame. When no Instruments are selected for preset filtering, then the Manager will either automatically list all presets or list presets based on other filters.

All presets are listed to the immediate right of the filters under Preset Name.

4.3.2 Type

"Type" refers to instrument type being synthesized. Just as in the above example, one may select "Type" only in order to have access to the list below:

- Bass
- Pad
- Lead
- EFX (sound effect)
- FM
- Brass
- Percussive
- Sequence
- Strings
- Guitar
- Organ
- Piano

As with the Instrument filter, one can choose one or more Types of presets. By selecting only BASS, the user will be given a list that contains only bass presets, and if one chooses BASS and STRINGS both Types will be provided.

The user may also search deeper by selecting and combining the different filters. For example, one may choose BASS, PAD, and STRINGS under the Type filter and MOOG MODULAR V and ARP 2600 V in the Instruments filter. The Preset Manager will then offer a list fulfilling only the above criteria.

4.3.3 Characteristics

To further filter choices, there is a third filter offered. "Characteristics" allows the user to choose presets according to a mood or ambiance. The choices available are as follows:

- Bright
- Dark
- Aggressive
- Quiet
- Hard
- Soft
- Complex
- Simple
- Short
- Long
- Bizarre
- Acid
- Ambient
- Digital
- Ensemble
- Noise
- SoundTrack
- Funky

Once again, these filters can be applied either individually or in any combination that the user wishes in order to find the ideal presets.

4.3.4 Entries Found

This number, found at the bottom right of the Preset Manager, indicates the number of Presets that correspond to a preset search.

4.3.5 Filter Options

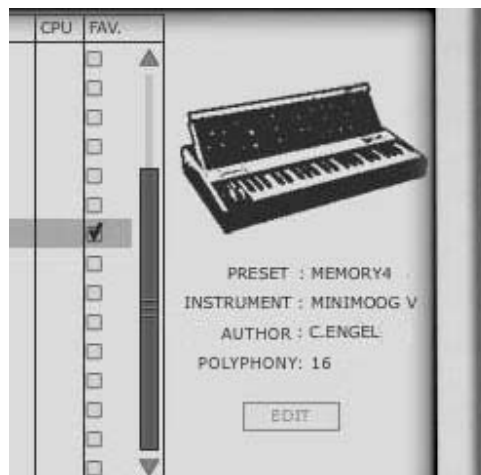
Above the filters are three buttons: Reset, Favorites, and User. These buttons function as follows:

RESET Removes any filters that the user may have applied to the presets so that a new search may be started.

FAVORITES Presents only the favorites that the user has checked in the favorites list. When the Favorites filter option is selected, then the filters (Instrument, Type, and Characteristics) will be applied only to the list of favorites.

USER An abbreviation of USER PRESETS. Since the user can modify and create new presets, he may also choose the Filter Option "USER" in order to view and search exclusively among presets created by the user.

4.3.6 Current Preset information



Identity Card

Information on the current preset, or an "Identity Card", is found to the right of the Preset Manager. An image of the original instrument which the preset is based upon is presented along with the following information:

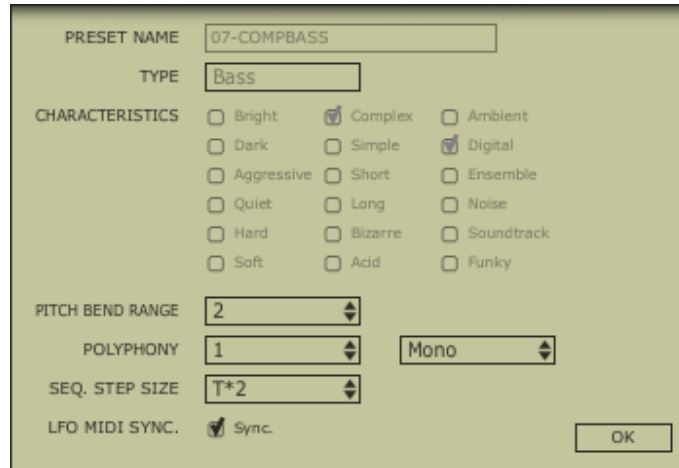
PRESET The name of the current preset

INSTRUMENT The name of the virtual instrument

AUTHOR The name of the sound designer who created the preset

POLYPHONY The number of available voices for the current preset.

EDIT If the selected preset is a USER Preset, it is possible to edit its information. By clicking on this option, a window similar to that of the Save As function appears. It is possible to change the Preset Name, Type (Bass, Brass, Pad, Lead, etc ...) and the Characteristics (one must simply click in the boxes corresponding to the 18 possible options: Bright, Dark, Aggressive, Quiet, Hard, Soft, etc.).



EDIT Preset window

4.3.7 Organization

In addition to the Preset Filters that help the user easily search and select among the 1000 various presets, there are also view options within the Preset Manager that allows the user to choose how the presets are listed.

When the user selects the filter criteria, the list of Presets appears in a vertical column in the middle of the screen under **Preset Name**. By default, the presets will be listed automatically in alphabetical order from A to Z under Preset Name. However, if the user prefers, the presets can be arranged on the screen according to other criteria in the adjacent columns:

INSTRUMENT In this column, the name of the original instrument that produced the sound is offered for each preset. Therefore, it will list among the following instruments: Minimoog V, Moog Modular V, ARP 2600 V, CS-80 V, Prophet 5, Prophet VS or Jupiter-8V. When the user clicks on the title bar labelled Instrument, the columns will reorganize alphabetically under the Instrument column.

TYPE In this column, the TYPE of instrument appears corresponding to each preset. By clicking at the top of the column on the TYPE title bar, the presets presented will be listed alphabetically according to TYPE in the same column.

CPU In this column, the CPU usage rate appears for each preset. By clicking the title bar labeled CPU at the top of this column, the presets will be arranged on a scale from 1 to 5. 1 represents a low CPU usage rate while 5 represents a high CPU usage rate.

FAVORITES (FAV) Allows the user to classify presets according to usage or general preference as one does in popular media players. Simply check one's Favorite presets and access them by clicking the title bar at the top of the column. One may also easily access the Favorites with the Favorites Filter Option.

4.4 Keyboard View

The Keyboard view of Analog Player 2.5 (accessed either by the “Keyboard” or “All” view in the toolbar) gives the user access to both the virtual keyboard and all the controls with which the user can modify the sounds of the presets. We will take a moment now to look at these controls.

4.4.1 Virtual keyboard

The LEVEL knob controls the general volume of Analog Player 2.5. The more the knob is turned to the right the higher the output level is raised.

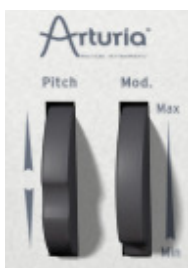
The virtual keyboard visually presents 25 keys and allows one to produce the sounds of Analog Player 2.5 without the need for an external master MIDI keyboard. With the aid of the OCTAVE +/- function found on the left of the virtual keyboard, above the pitch and modulation wheels, the user may scroll up or down the keyboard for notes in higher or lower ranges than is visually presented.



Virtual Keyboard

4.4.2 The wheels


The wheels found on the left side of the virtual keyboard give the user control over the frequency of the sound (“PITCH”) and the modulation rate (“MOD”).



Wheels

PITCH WHEEL Wheel controlling the pitch of the sound. When pushed in the up direction, the sound “bends” and becomes higher in tune. When pushed in the Down direction, the sound “bends” and becomes lower in tune.

MOD Wheel controlling modulation (MIDI controller #1)

 *The modulation wheel is not necessarily connected on every preset! It will depend on the preset being used.*

4.4.3 Filter



Filter

CUTOFF Modifies the cut-off frequency (this filter has the ability to make the sound more or less bright by controlling the amount of high frequencies)

RESO modifies the resonance of the filter (the sound becomes more “cutting” when the parameter is pushed)

4.4.4 FX MIX (Effects Mix)

Analog Player 2.5 also carries a simple yet efficient effects section. The two effects, Chorus and Delay, are automatically synchronized to the tempo of a piece in the user’s sequencer. If in spite of this the user wishes to access more advanced effects, they are available in most sequencer programs (Cubase, Garage Band or Pro Tools, to name just a few).



FX MIX

CHORUS The Chorus effect permits one to double and detune the sound in order to make it deeper and richer. The Chorus MIX controls the amount of Chorus applied to the original sound, making it more wet or dry.

DELAY The Delay carries an echo effect (repetition of the sound) that gives space to the tone. The speed of these repetitions is automatically synchronized to MIDI tempo (the tempo of a song in the host sequencer). The user can simply adjust the Delay MIX knob to control the quantity of the effect.

4.4.5 ADSR knobs

The "ADSR" envelope is composed of four successive sequential periods in the life of a note: Attack time, Decay time, Sustain time, and the Release time.

ATTACK Begins when a note is activated. The Attack time may be short and dry (as in percussion) or long and ascending (as with a pad sound)

DECAY Follows the Attack. The Decay is a period in which the amplitude of the sound is reduced to the sustain level.

SUSTAIN The sustain of the note, as long as the note is active/held

RELEASE The end of the sound. The release can be short or stretch out over a longer duration

Thanks to these 4 knobs (A, D, S, and R) one can very simply edit the amplitude curve envelope of each sound within Analog Player. If, for example, one finds a sound pleasant but the attack is too long, he can use the A knob to reduce it.



ADSR envelope

As will be described in the following paragraphs, the diverse parameters of Analog Player 2.5 can be controlled from an external MIDI keyboard making the manipulation of the instrument much more practical and quicker than manipulations with a mouse. It is in this spirit that the instrument was created. It is recommended to use Analog Player 2.5 with an external MIDI keyboard.

4.4.6 SNAPSHOTS buttons



Snapshots buttons

The Snapshots buttons are found at the top left hand corner of the Keyboard view. These four buttons allow the user to quickly save any preset being used, along with modifications that may have been made to it, for easy access. These 4 snapshots are automatically saved when Analog Player 2.5 closes and will be automatically available when the program is reopened.

This feature is especially useful when an artist plays live because these 4 snapshots can then be easily accessed from a MIDI interface. This means that the user can stock 4 of his favorite presets along with any modifications previously made, and have everything they need at the touch of a button on a MIDI interface during a live session without referencing the computer screen.

It can also be useful for comparing modifications to sound in order to choose which fits best into a musical production. For example one could store 4 different states of the same preset: first state or original, second with the Cutoff applied, third state using the delay, etc.

To take a snapshot:

- ▶ Simply [Shift]+click (⌘+click on Mac) on one of the buttons in order to save the preset currently being used.
- ▶ Then, later, to recall the preset along with any modifications that may have been made to it, click on the same button.
- ▶ If the same [Shift]+click (⌘+click on Mac) operation is done on the same button, then the current Snapshot will be replaced without prompting the user.

4.4.7 MIDI control

Most of the knobs, sliders, and switches on the Analog Player 2.5 can be manipulated with external MIDI controllers, and this is ideally the way they should be controlled, in order to get a high level of usability. Before anything else, the user should make sure that the MIDI device being used is correctly connected to the computer, and that the sequencer or the Analog Player 2.5 application is correctly configured to receive MIDI events coming from the device.

Every instance of the Analog Player 2.5 receives MIDI events transmitted on a given channel. This reception channel is defined in a global manner for the synthesizer, either in the sequencer, or in the standalone Analog Player 2.5 application. On the reception channel, the Analog Player 2.5 can receive different MIDI controls.

It is possible to choose a reception control for each knob, which means assigning an external controller to a given parameter. For this, one should **click on the knob being used while holding down the Control key**. A configuration window appears and offers the choice of a MIDI control number. The user can also click on the "Learn" button and move one of the physical MIDI controllers. In this case, the control number will be detected and configured automatically. To deactivate the MIDI control of a knob, simply uncheck the "Active" option in the MIDI control window.



Assigning an external MIDI controller

5 MODES OF OPERATION

5.1 Standalone and MIDI configuration

The stand-alone application allows the use of Analog Player 2.5 outside of any host application. You can open the instrument from its location in the start menu or on your desktop, and play directly with the help of a master MIDI keyboard or external sequencer on a separate computer.

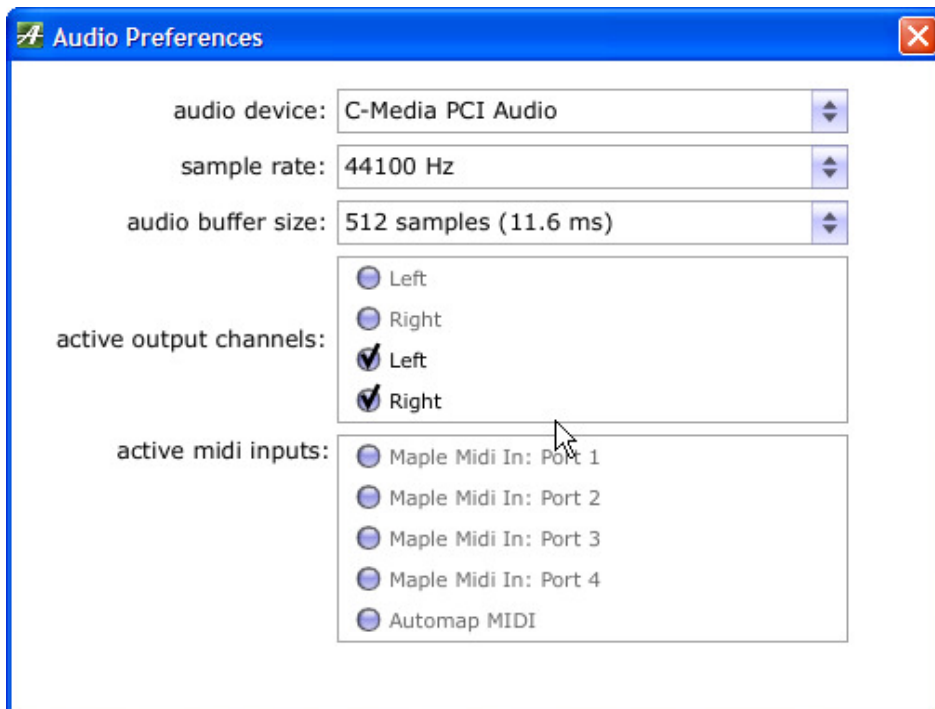
5.1.1 Launching the standalone application

To launch the Stand-alone application on your PC, go into the Start menu > Programs > Arturia > Analog Player 2.5, and choose Analog Player 2.5.

On a Macintosh, open the folder /Applications/Arturia Analog Player 2.5/ and double click on the application icon called Analog Player 2.5.

5.1.2 Preferences configuration

In order to access the preferences window, click on the menu File > Audio & MIDI Preferences. This window allows you to configure the global preferences of the Analog Player 2.5 application. These are saved automatically.



The preferences window

- audio device** Select the driver corresponding to the sound menu that you wish to use.
- sample rate** Choose the sampling frequency among those proposed by your sound menu. Note that higher sampling frequency rate settings will demand increased processor performance from your computer.
- audio buffer size** Configure the optimal audio latency as it relates to performance of your sound card. Be careful with this setting, as a latency setting lower than your system can support can cause unwanted artifacts in the sound.
- output channels** Select the audio output channel. If the sound menu offers several outgoing channels, choose the pair of output channels that you wish to use.
- active MIDI inputs** Select the MIDI devices you want to use to control the synthesizer.

5.2 VST

5.2.1 Installation

5.2.1.1 Under Windows

During installation, select the box "VST" among the proposed format choices of plug-ins. The installer will automatically detect the VST folder of the instruments used by Cubase or Nuendo. In the case of another compatible VST sequencer, such as Logic Audio, you will have to manually copy the plug-in file in the appropriate folder. You will be able to find this file after the installation in:

`C:\Program Files\Arturia\Analog Player\AnalogPlayer.dll`

5.2.1.2 Under Mac OSX

The VST plug-in is automatically installed in the folder of the system corresponding to the VST instruments: `/Library/Audio/Plug-Ins/VST/`. The VST plug-in will be usable by all your VST host applications.

5.2.2 Instrument use in the VST mode

The opening of VST Analog Player plug-ins is the same as opening all other VST plug-ins. Please consult the instruction manual of your host sequencer for more specific information. Under Cubase SX, open the menu "VST Instruments", and choose Analog Player in the rack.



Using Analog Player in Cubase SX3

5.2.2.1 Connection to a MIDI track

In order for Analog Player 2.5 to play information coming from a MIDI track, you have to choose a MIDI track and select Analog Player as MIDI output of this track. See the picture below for more detail on how this is accomplished.



Connection of a MIDI track to Analog Player

The events played on a MIDI keyboard are recorded by your host sequencer, and now you can use the MIDI editing possibilities of the sequencer to control any parameter in Analog Player 2.5.

5.2.2.2 Saving presets

When the session/project is saved, Analog Player is saved in its last mode of operation, with all modifications intact. For instance, if you are working on a "P1" preset in which you have modified parameters (without saving this as a separate preset in the plug-in itself), at the next opening of the piece, Analog Player will load the "P1" preset and the modifications as well.

The drop-down menu with the VST sequencer allowing you to save a new preset is of course usable with Analog Player 2.5. However, it is highly advised to use the Analog Player internal menu: the presets saved in this way are usable in any other mode (standalone or with another sequencer), they can be exported and exchanged more easily, and they will remain compatible with the future Analog Player versions.

5.2.2.3 Automation

The automation works the same with Analog Player as with any VST plug-in (for more detail about automation, refer to the VST sequencer documentation).

5.3 Audio Unit (Mac OS X only)

5.3.1 Installation

The Audio Unit plug-in is automatically installed in the folder reserved for this purpose, in `/Library/Audio/Plug-Ins/Components/`.

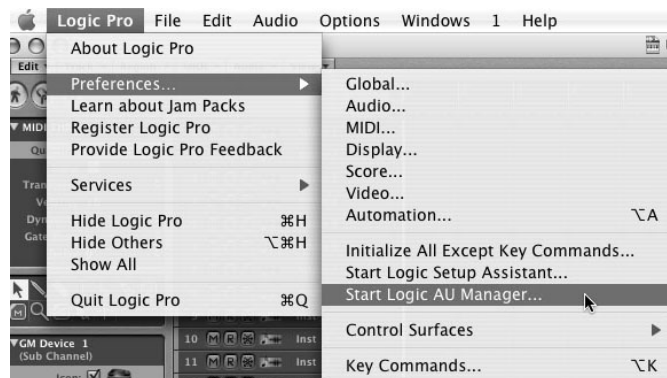
5.3.2 Use in Logic Pro

Select an instrument track. On the slice of the mixer corresponding to the selected track, click on the button "I/O" to obtain the list of plug-ins, then select Stereo > AU Instruments > Arturia Analog Player.



Analog Player opening in Logic

Since version 7, there has been an Audio Unit plug-in manager in Logic. To launch it, click on the menu Preferences > Start Logic AU Manager.



Launching the Audio Unit Manager in Logic Pro

This Manager allows us to see the list of the available plug-ins, to test their compatibility with Logic, and to activate or de-activate them.

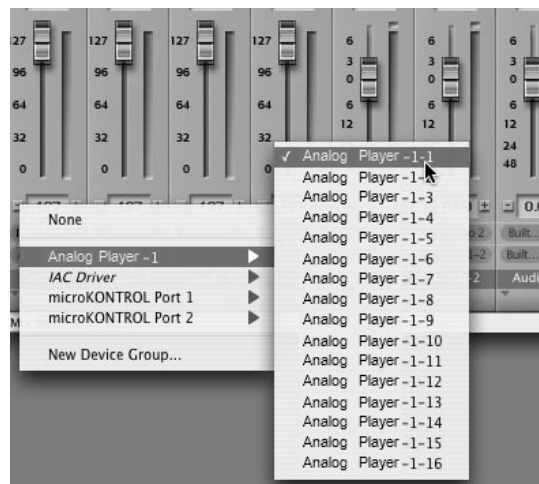
If it happens that one of the Arturia plug-ins poses a problem in Logic, start by checking that this plug-in has passed the compatibility test, and that it is actually selected for use.

5.3.3 Use in Digital Performer

To add an instrument, choose the menu Project > Add Track > Instrument Track > Analog Player.

Opening of Analog Player in the Digital Performer

Once you have added this instrument, it's possible to assign a MIDI track to it. In the connection menu of the MIDI track, select the instrument and the MIDI channel that you want to use.



Connection from a MIDI track to Analog Player

5.4 Pro Tools

5.4.1 Installation

On Mac OSX, the plug-in is directly installed in the folder reserved for the Pro Tools plug-ins, in `/Library/Application Support/Digidesign/Plug-Ins/`.

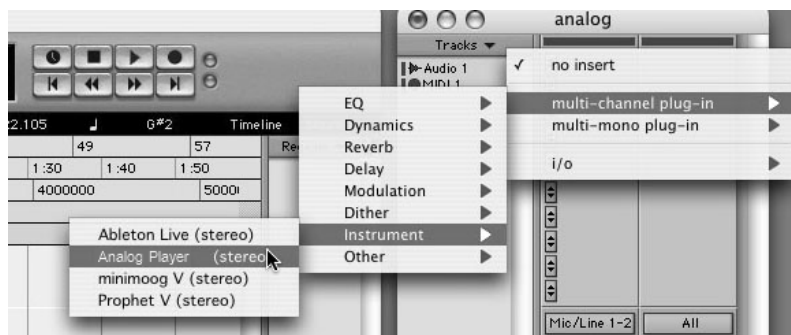
On Windows, at the time of the installation procedure, select the RTAS plug-in among the proposed choices of plug-ins. Then, when the system asks, indicate the folder in which the other RTAS plug-ins are located.

Usually, its access path is: `C:\Program Files\Common Files\Digidesign\DAE\Plug-Ins\`

5.4.2 Utilization of the plug-in

5.4.2.1 Opening the plug-in

Access to the Analog Player plug-in is like all other plug-ins, via an audio track insert:

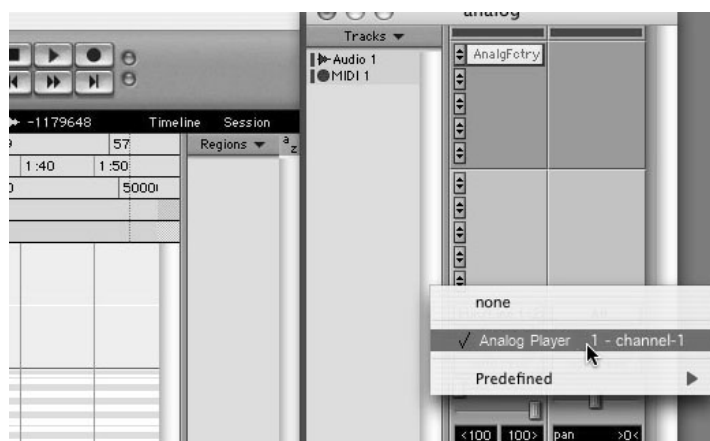


Opening Analog Player 2.5 in Pro Tools

Analog Player must be loaded on an audio stereo track. We can now make Analog Player 2.5 sounds by playing with the mouse on the virtual keyboard.

5.4.2.2 Connection to a MIDI channel

So that Analog Player 2.5 can play the information coming from a MIDI track, you have to associate it to a MIDI channel via the appropriate menu. (See the Pro Tools menu for more information on plug-in connection).



Connecting a MIDI track to Analog Player

5.4.2.3 Saving the presets

When the session is saved, the status of Analog Player 2.5 is saved as it is, even if its programming does not correspond to the preset. For example, if you are working on a preset P1 in which you have modified the parameters (without saving them in the plug-in itself), the next time you open the session, Analog Player 2.5 will charge the P1 preset plus the modifications.

The Librarian Menu of Pro Tools can be used with Analog Player 2.5 like with all other plug-ins. Nevertheless, it is highly recommended to use the internal Analog Player 2.5 menu: with the presets saved like this, they are usable no matter which mode (standalone or other sequencer), and they can be exported, exchanged more easily, and will stay compatible with the future versions of Analog Player 2.5.

5.4.2.4 Automation under Pro Tools

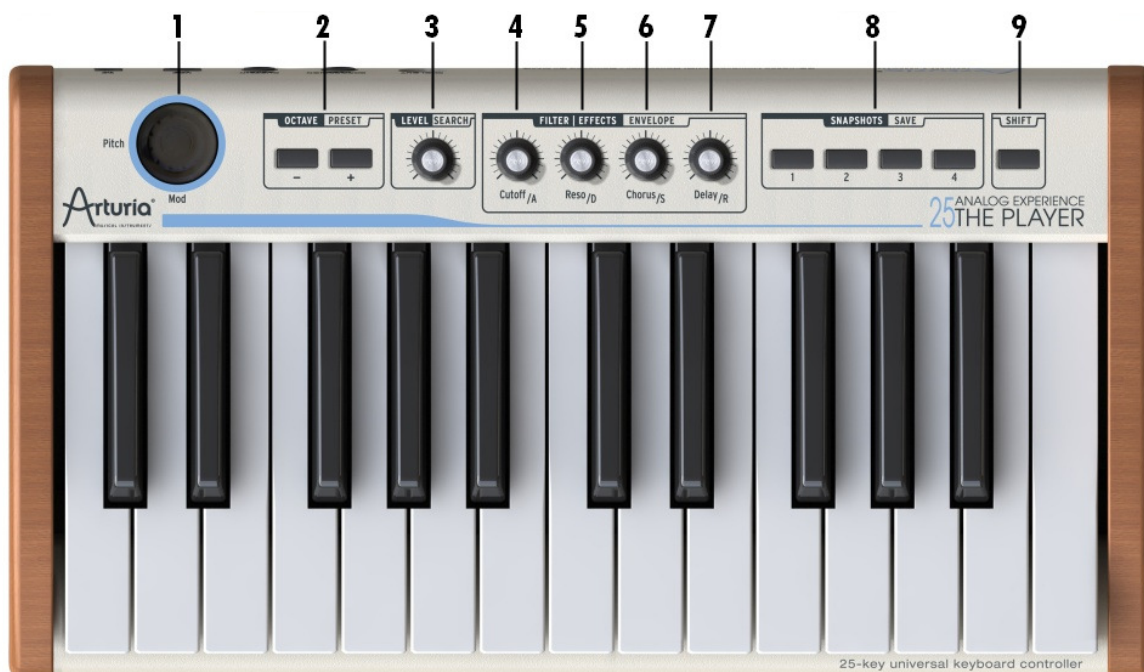
The automation functions with Analog Player like with all RTAS/HTDM plug-ins (make reference to the Pro Tools documentation for more details on the plug-in automations).

6 ANALOG PLAYER KEYBOARD (ANALOG EXPERIENCE "THE PLAYER" ONLY)

6.1 Front panel overview

The Analog Player Keyboard is a 25-key velocity sensitive keyboard including a control surface that is identical to the Analog Player 2.5 software interface.

Front panel interface of the Analog Player Keyboard overview from left to right:



- 1) Joystick for modulation and pitch bend
- 2) Octave +/- or Preset up/down buttons
- 3) Level knob or navigation knob (pushable rotary encoder)
- 4) Cutoff knob (Attack when shift mode is active)
- 5) Resonance knob (Decay when shift mode is active)
- 6) Chorus mix knob (Sustain when shift mode is active)
- 7) Delay mix knob (Release when shift mode is active)
- 8) 4 snapshot buttons
- 9) Shift button

6.1.1 The keyboard

The Analog Player Keyboard is a 25-key velocity sensitive keyboard controller.

6.1.2 Shift button

The Shift button can set the Analog Player Keyboard in 'Shift' mode. When the button is pushed it will call a secondary function you can't get in the initial mode. This button lights up when the 'Shift' mode is activated.

It will operate on the features:

- Preset/Octave
- Snapshot/save buttons
- Level/search rotary encoder
- Rotary knobs

See the following chapters for more details about their features.


6.1.3 Level/search rotary encoder

The "Level/Search" rotary encoder works either to set the volume of Analog Player 2.5 or to select synth types or characteristic criteria of the presets. It works in combination with the Shift button.

When the 'Shift' mode is disabled, the "Level/Search" rotary encoder will set the volume of the synth.

When the 'Shift' mode is enabled, the "Level/Search" rotary encoder will select synth types or characteristics.

When you push on the encoder, it validates the search criteria for preset browsing using the convenient preset managing system of Analog Player 2.5.

 *It is important to realize that this encoder is different from the others as it offers a switch option. Clicking on the encoder when in "Search" Mode allows selecting or unselecting search criteria.*

6.1.4 Preset/octave buttons

These buttons have two functions (in combination with the shift button): the octave transpose and the preset selection.

When the 'Shift' mode is disabled, the Preset/Octave buttons "+/-" will work as "**Octave up/down**" buttons. You can increase (or decrease) by up to three octaves.

Pushing the minus or plus button makes the software transpose up to three octaves up or down to set the preferred octave section.

Seven states of leds will help you to visually locate the current octave setting:

- Octave -3 : led- blinks at speed 3, led+ does not blink
- Octave -2 : led- blinks at speed 2, led+ does not blink
- Octave -1 : led- blinks at speed 1, led+ does not blink
- Octave 0 : led- and led+ don't blink
- Octave +1 : led+ blinks at speed 1, led- does not blink
- Octave +2 : led+ blinks at speed 2, led- does not blink
- Octave +3 : led+ blinks at speed 3, led- does not blink

When the 'Shift' mode is enabled, these two buttons function as "Preset up/down" buttons for convenient browsing through the huge library of presets Analog Player has to offer.

6.1.5 Snapshot/save buttons

The snapshot/save button enables one to recall or save a snapshot. It works in combination with the Shift button.

When the 'Shift' mode is disabled, the "Snapshot/Save" buttons will **recall** a snapshot.

When the 'Shift' mode is enabled, the "Snapshot/Save" buttons will **save** a snapshot. All editable functions of Analog Player 2.5 are saved within the snapshot.

6.2 Joystick

This two-dimension controller is used for real time pitch shift (horizontal direction), modulation amount settings (vertical-up direction) and breath control (vertical-down direction).

6.2.1 Pitch bend


Moving the Joystick left or right alters the pitch of the played sound. The octave range of the pitch wheel depends on which preset is selected.

6.2.2 Modulation

Moving the Joystick up alters the modulation amount of the played sound. The level of modulation introduced by moving the modulation wheel depends on which preset is selected.

6.2.3 Breath control

Moving the Joystick down sends Breatch Control messages, usually used with wind instruments. You can use the MIDI Control Center to map the Down direction of the joystick to another control if you prefer.

 *The modulation and breath control are not necessarily connected on every preset! It will depend on the preset being used.*

6.3 Synthesis section

This part presents all the synthesis parameters for Analog Player 2.5.

6.3.1 Filter setting rotary encoders

There are two rotary encoders available to alter the filter settings of the selected preset. These two encoders are 'Cutoff' and "Resonance".

6.3.2 FX Mix rotary encoders

There are two 'FX Mix' rotary encoders available on the Analog Player keyboard. These two encoders are for 'Chorus' and 'Delay'. Both encoders set the Dry/wet level of the effect.

6.3.3 Alternate ADSR function

The four knobs have an alternate function when shift mode is active: they are controlling the ADSR envelope.


6.4 Rear panel overview

Back panel interface of the Analog Player Keyboard overview from right to left:



- 1) Power on/off switch
- 2) DC in connection. (DC power adaptor requirement: 12V 500mA $\ominus \bullet \oplus$)
- 3) USB connection
- 4) MIDI out connection
- 5) Sustain pedal connection

Setting up the Analog Player Keyboard is fast and simple. First Install the Analog Player program on your computer. After unpacking the keyboard it is time to connect it to the computer. As the Analog Player Keyboard is bus powered by USB, connecting it by only one simple USB cable to your computer is all you have to do. If you wish to use an adapter instead of the bus power, connect a 12V DC 500mA adapter to the back of the Analog Experience "The Player" Keyboard.

 *The DC adapter is not included on the Analog Experience pack. Before connecting an external DC adapter, make sure you are connecting a compatible adapter. See the technical specifications for compatibility details!*


It is not necessary to install the driver for the Analog Player Keyboard in order to get it to function with your computer. Analog Experience "The Player" is "plug and play" compatible. The driver is automatically installed when you install Analog Experience "The Player".

6.4.1 MIDI connections

The Analog Player Keyboard sends and receives MIDI via USB. Furthermore the Analog Player Keyboard can function as a MIDI interface. A 'MIDI out' connector is located on the back of the keyboard. This connector lets you send MIDI data to anything that has a MIDI in

connector. This could be a sound module, synthesizer, sequencer or drum computer for instance.

6.4.2 Power supply

Although the Analog Player Keyboard is USB bus powered, it is also possible to use a DC adapter when this is required. If you wish to use an adapter instead of the bus power, it is possible to connect an optional 12V DC 500mA  adapter to the back of the Analog Experience "The Player" Keyboard.

6.5 Basic MIDI control

Every parameter of Analog Player 2.5 is controllable by the included keyboard controller. Once the software is started and the keyboard controller is connected, the software can be totally controlled without the use of mouse or a computer keyboard.

7 MIDI IMPLEMENTATION (ANALOG EXPERIENCE "THE PLAYER" ONLY)

7.1 Using the keyboard

Your Analog Player Keyboard can be used independently of Analog Player 2.5. It can be used as a standard MIDI controller.

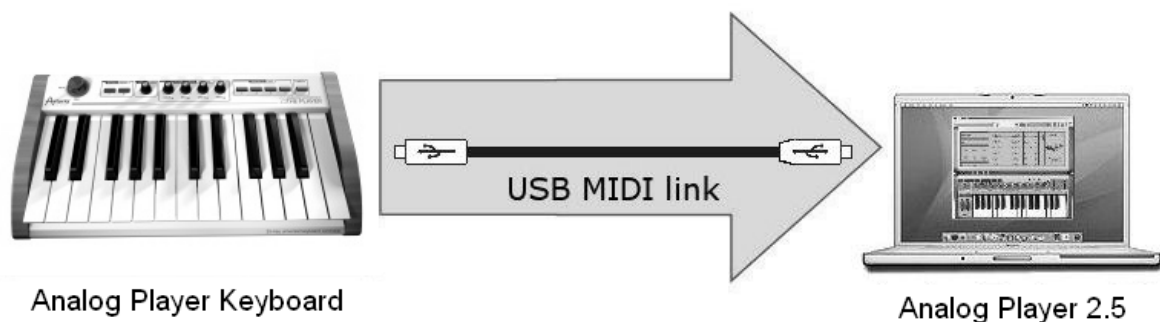
The following information allows you to benefit from your MIDI keyboard, and to help you use it with other software or instruments.

7.2 What is MIDI?

MIDI (for Musical Instrument Digital Interface) is a universal standard that allows electronic musical instruments and computers to exchange performance data.

MIDI makes it possible to convey to another musical instrument, an ongoing description of exactly what's happening during performance. For example, a C key played on your Analog Player MIDI keyboard has been pressed using a certain amount of velocity, the instrument (Analog Player 2.5 launched on your computer, itself provided with a MIDI interface) will exactly answer to these MIDI messages.

In other words, MIDI is a language that musical instruments can use to communicate with each other.



The MIDI standard includes 127 MIDI parameters that are pre-assigned to synthesis or sound parameters used by all the MIDI sound modules or software.

Some MIDI specific messages – SysEx, or System Exclusive messages – can also be used by the MIDI-based sound modules or music software to control some specific parameters.

7.3 MIDI implementation chart

Arturia Analog Experience "The Player" USB MIDI Master Keyboard.

Model : **APE25**

Version : **1.1**

	Function	Transmitted	Recognized
Basic Channel	Default	1	1~16
	Changed	1~16	1~16
Mode	Default		
	Messages		
	Altered		
Note Number		0~127	X
	True Voice	*****	
Velocity	Note On	0 v=0~127	X
	Note Off	0	X
After Touch	Key's	X	X
	Channel	X	X
Pitch Bend		0	X
Control Change		0 v=0~127	X
Program Change		X	X
System Exclusive		0	0
System common	Song position	X	X
	Song select	X	X
	Tune request	X	X
System Real time	Clock	X	X
	Commands	X	X
Aux Messages	Local on/off	X	X
	All notes off	X	X
	Active sensing	X	X
	System reset	X	X

7.4 MIDI controllers list

Item id	Description	CC number	Value
0x01	Filter Cutoff	74	0..127
0x02	Filter Reso	71	0..127
0x09	Fx Chorus	93	0..127
0x0A	Fx Delay	91	0..127
0x0B	Envelope Attack	73	0..127
0x0C	Envelope Decay	75	0..127
0x0D	Envelope Sustain	79	0..127
0x0E	Envelope Release	72	0..127
0x10	Preset down	20	0 or 127
0x11	Preset Up	21	0 or 127
0x12	Recall snap 1	22	0 or 127
0x13	Recall snap 2	23	0 or 127
0x14	Recall snap 3	24	0 or 127
0x15	Recall snap 4	25	0 or 127
0x22	Save snap 1	104	0 or 127
0x23	Save snap 2	105	0 or 127
0x24	Save snap 3	106	0 or 127
0x25	Save snap 4	107	0 or 127
0x30	Volume	7	0..127
0x31	Search	112	+/- 1
0x32	Select	113	0 or 127
0x40	Modulation wheel	1	0..127
0x50	Sustain pedal	64	0 or 127

7.5 System Exclusive messages detail

SysEx		Description	T	R
F000206B02	0101 nn F7	Item config request nn:item		0
F000206B02	0102 nn cc F7	Item config response cc:cc number	0	
F000206B02	0103 nn cc F7	Item config Set		0
F000206B02	0201 nn F7	Item value request nn:item(see table above)		0
F000206B02	0202 nn vv F7	Item value response vv: value	0	
F000206B02	0203 nn vv F7	Item value set		0
F000206B02	0301 F7	MIDI channel request		0
F000206B02	0302 0c F7	MIDI channel response c: MIDI channel(0 to F)	0	
F000206B02	0303 0c F7	MIDI channel set		0
F000206B02	0401 F7	Octave shift request		0
F000206B02	0402 ss F7	Octave shift reponse ss: octave shift (-3 to 3)	0	
F000206B02	0402 ss F7	Octave shift set		0
F000206B02	0501 F7	velo curve request		0
F000206B02	0502 nn F7	velo curve response nn: curve index	0	
F000206B02	0503 nn F7	velo curve set		0
F000206B02	0701 F7	acc mode request		0
F000206B02	0702 nn F7	acc mode response nn: mode index	0	
F000206B02	0703 nn F7	acc mode set		0
F000206B02	0801 nn F7	led state request nn:item 0x63 to 0x66		0
F000206B02	0802 nn 0v F7	led state response vv: value (0 or 1)	0	
F000206B02	0803 nn 0v F7	led state set		0
F000206B02	0901 nn F7	global param. request nn:parameter (*)		0
F000206B02	0902 nn 0v F7	global param. response vv: value (0 or 1)	0	
F000206B02	0903 nn 0v F7	global param. set		0

(*) Global parameter:

nn = 2 Relative mode: 1 = absolute, 127 = relative

Values that could be negative are coded this way: absolute value is coded on the 6 less significant bits; the sign is coded on the 7th bit.

8 MIDI CONTROL CENTER (ANALOG EXPERIENCE "THE PLAYER" ONLY)


The MIDI Control Center is a separate utility that can be used to configure the MIDI settings of your Analog Experience keyboard.

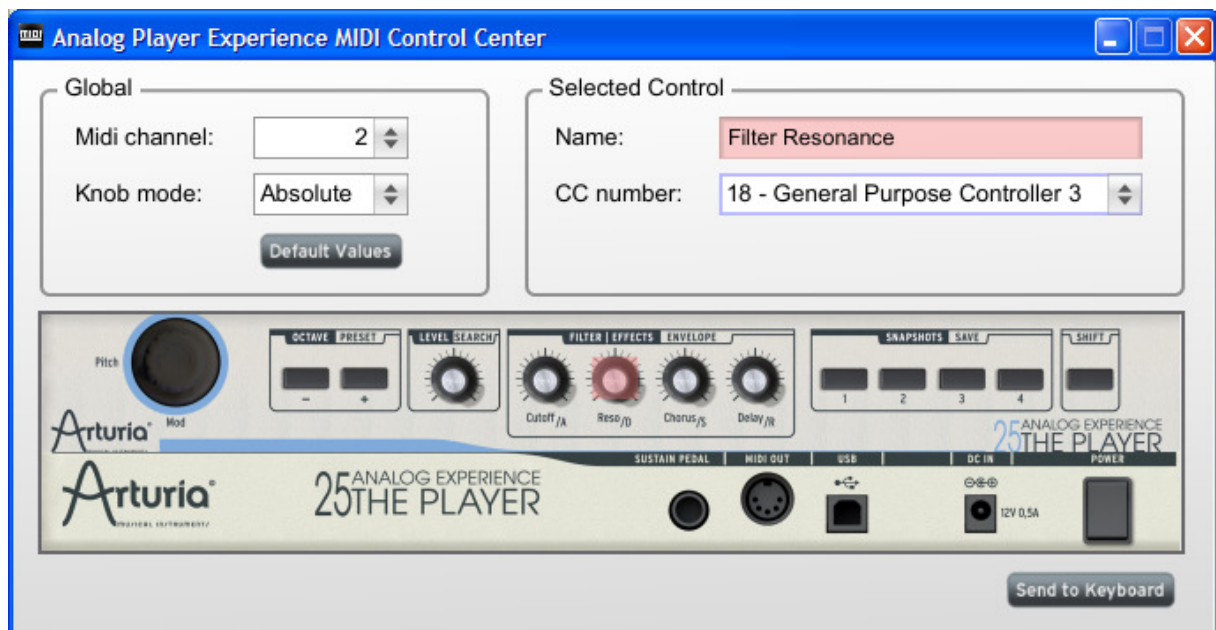
This utility can be found in the same folder as Analog Experience 2.5.

8.1 Launching the MIDI Control Center

Before launching the MIDI Control Center, ensure that your Arturia Analog Experience keyboard is connected to your computer.

The MIDI Control Center utility will automatically attempt to detect the keyboard and load its current configuration.

 *The MIDI Control Center is specifically designed to drive the Analog Experience keyboard; trying to use it with another MIDI device will inevitably fail.*




The top sections enable you to edit your keyboard settings.

The bottom section represents the actual elements of your Analog Experience keyboard and is used to select which control will be set up.

8.2 Changing MIDI settings

8.2.1 Global settings

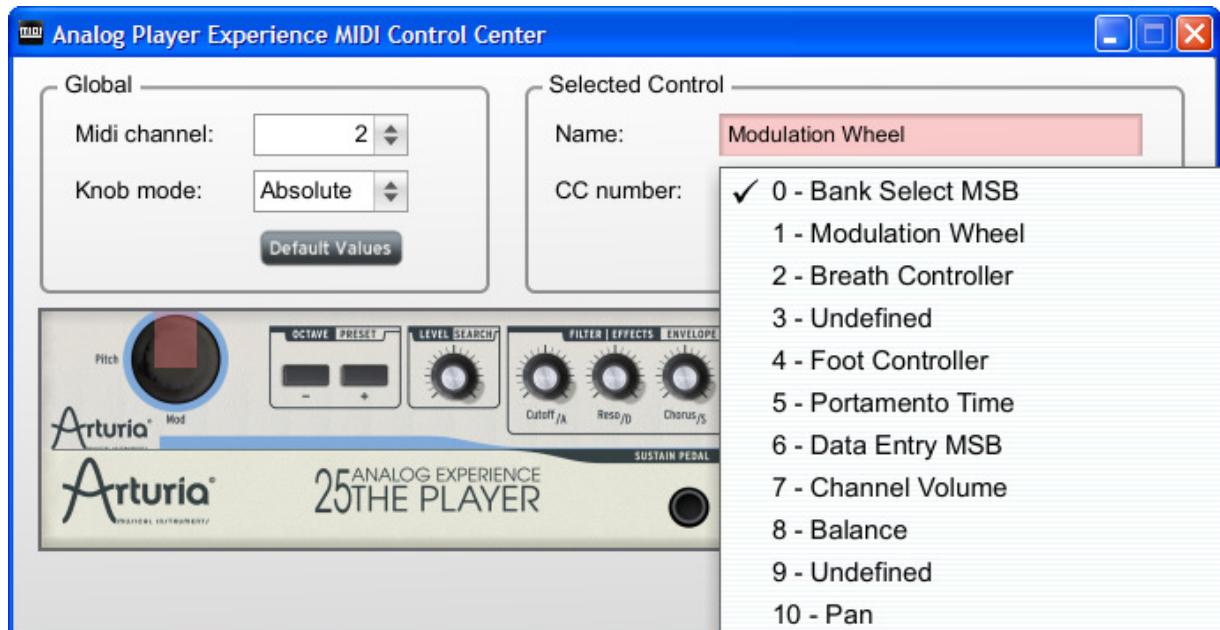
The settings that can be set globally (i.e. for the entire keyboard) are:

MIDI CHANNEL	MIDI channel that the keyboard will use to send all MIDI events.
KNOB MODE	Absolute: default mode for Analog Player. Knobs send absolute values. Relative: knobs send 63 and below for negative values, 65 and above for positive values.
	<hr/>  The relative mode is not compatible with Analog Player , this setting is only available for an increased compatibility with other MIDI devices or software. <hr/>
DEFAULT VALUES	Pressing this button will reload all factory default settings for the keyboard.

8.2.2 Individual control settings

To configure the MIDI CC used for a specific control on your keyboard:

- ▶ Click on the control you wish to select. The selected control will be highlighted in Red. Its settings will be automatically displayed in the "Selected Control" section.
- ▶ Change the CC number assigned to this control by selecting the appropriate line in the drop-down list:



8.2.3 Saving settings to the keyboard

Changes done in the utility are not saved to the keyboard until you press the "Send to Keyboard" button.

When you are ready to save the entire configuration, press "Send to Keyboard".

9 ARTURIA ANALOG PLAYER 2.5 – LEGAL INFORMATION

9.1 Software License Agreement

In consideration of payment of the Licensee fee, which is a portion of the price you paid, Arturia, as Licensor, grants to you (hereinafter termed "Licensee") a nonexclusive right to use this copy of the Analog Player program (hereinafter the "SOFTWARE").

All intellectual property rights in the software belong to Arturia SA (hereinafter: "Arturia"). Arturia permits you only to copy, download, install and use the software in accordance with the terms and conditions of this Agreement.

The product contains product activation for protection against unlawful copying. This system is known as eLicensor and permits a permanent use of the software only after the activation process has been totally completed. The software can be used only together with the eLicensor dongle (dongle) and/or the Soft-eLicensor; the OEM software can be used only following registration.

Internet access is required for the activation process. The terms and conditions for use of the software by you, the end-user, appear below. By installing the software on your computer you agree to these terms and conditions. Please read the following text carefully in its entirety. If you do not approve these terms and conditions, you must not install this software. In this event give the product back to where you have purchased it (including all written material, the complete undamaged packing as well as the enclosed hardware) immediately but at the latest within 30 days in return for a refund of the purchase price.

1. Software Ownership

Arturia shall retain full and complete title to the SOFTWARE recorded on the enclosed disks and all subsequent copies of the SOFTWARE, regardless of the media or form on or in which the original disks or copies may exist. The License is not a sale of the original SOFTWARE.

2. Grant of License

- Arturia grants you a non-exclusive license for the use of the software according to the terms and conditions of this Agreement. You may not lease, loan or sublicense the software.
- If the software is protected by the eLicensor dongle alone, you may install a license for the software on one or at most 3 computers which are in your possession. The software may be used only on one of the computers at the same time by using the Arturia key.
- If the software is protected by the Soft-eLicensor (alone or together with the Arturia key) or has been sold to the first end user together with other software and/or hardware (hereinafter: "OEM software"), you may install and use a license for the software only on one computer which is in your possession. Purchasing a eLicensor dongle makes it easily possible to use the software on three computers if needs occur.
- The use of the software within a network is illegal where there is the possibility of a contemporaneous multiple use of the program.

- You are entitled to prepare a backup copy of the software which will not be used for purposes other than storage purposes.
- You shall have no further right or interest to use the software other than the limited rights as specified in this Agreement. Arturia reserves all rights not expressly granted.

3. Activation of the Software

- Arturia may use a compulsory activation of the software and a compulsory registration of the OEM software for license control to protect the software against unlawful copying. If you do not accept the terms and conditions of this Agreement, the software will not work.
- In such a case the product including the software may only be returned within 30 days following acquisition of the product. Upon return a claim according to § 11 shall not apply.

4. Support, Upgrades and Updates after Product Registration

- You can only receive support, upgrades and updates following the personal product registration. Support is provided only for the current version and for the previous version during one year after publication of the new version. Arturia can modify and partly or completely adjust the nature of the support (hotline, forum on the website etc.), upgrades and updates at any time.
- The product registration is possible during the activation process or at any time later through the Internet. In such a process you are asked to agree to the storage and use of your personal data (name, address, contact, email-address, and license data) for the purposes specified above. Arturia may also forward these data to engaged third parties, in particular distributors, for support purposes and for the verification of the upgrade or update right.

5. License module (eLicenser Key and/or Soft eLicenser)

- Arturia uses a hardware device connected through the USB connection of a computer, the "eLicenser dongle" and/or a protection scheme, the "Soft eLicenser" for license control (hardware and/or virtual dongle). The eLicenser dongle and/or Soft eLicenser permanently saves the license information and regulates access to the software. If a eLicenser dongle is required for the use of the software, then the eLicenser dongle must be connected physically to the computer through the USB interface.
- For the activation of the software, updates or upgrades of the software the computer which is connected to the Arturia key and/or using the Soft eLicenser or using the OEM software must be connected to the server of SIA eLicenser through the Internet. If the product was delivered with the eLicenser dongle, the license information was already transferred to the eLicenser dongle. If the product was delivered with a product card (without the eLicenser dongle), the activation codes of the enclosed product card must be entered manually by the user upon installation and the license information must be exchanged with the server of SIA eLicenser.
- In the event of OEM software, the activation codes will be sent to an email-address submitted by you during a registration and must be entered manually by the user upon installation and the license information must be exchanged with the server of SIA eLicenser.

- The reinstallation of the software - on the same or another computer - is permitted only in case the already installed software cannot be used any more (e.g. following deinstallation). If the software does not use an eLicensor dongle, the new activation codes may be obtained from the user's online account for support created during the personal product registration. Further, the activation codes must be entered manually by the user upon installation and the license information must be exchanged with the server of SIA Steinberg. Arturia may require for the provision of further activation codes e.g. your proof of purchase (invoice, receipt) and a signed assurance by fax or letter stating your name, address and that the already installed software cannot be used any more.
- You can also use another computer other than the one on which the software is to be installed for the activation and transfer of license data to the eLicensor dongle, if the software is using an eLicensor dongle. However, in such a case a corresponding access software (eLicensor Control Center, "eLC") must be installed on the computer connected to the Internet, which is subject to a separate licensing agreement.

6. Defect and loss of the eLicensor dongle

- In the case of a defect or damage to the eLicensor dongle Arturia or a third party engaged by Arturia will check the eLicensor dongle. In the case of a legitimate claim the eLicensor dongle and the licenses included shall be replaced in return for a handling fee. The licenses will only be replaced provided that they are licenses issued by Arturia. Further claims against Arturia are excluded.
- Arturia assumes no liability or obligation if the eLicensor dongle is mislaid as a result of loss, theft or otherwise. Arturia reserves the right to block the licenses saved on the eLicensor dongle upon being notified by the registered user of the loss. The licenses saved on the eLicensor dongle cannot be replaced.

7. No Unbundling

- The software usually contains a variety of different files which in its configuration ensure the complete functionality of the software. The software may be used as one product only. It is not required that you use or install all components of the software. You must not arrange components of the software in a new way and develop a modified version of the software or a new product as a result. The configuration of the software may not be modified for the purpose of distribution, assignment or resale.
- You may also not sell the eLicensor dongle separately as a license; the usage rights always remain with the software, in particular with the original software data carrier (e.g. CD).

8. Assignment of Rights

- You may assign all your rights to use the software to another person subject to the conditions that (a) you assign to this other person (i) this Agreement and (ii) the software or hardware provided with the software, packed or preinstalled thereon, including all copies, upgrades, updates, backup copies and previous versions, which granted a right to an update or upgrade on this software, (b) you do not retain upgrades, updates, backup copies and previous versions of this software and (c) the recipient accepts the terms and conditions of this Agreement as well as other regulations pursuant to which you acquired a valid software license.

- A return of the product due to a failure to accept the terms and conditions of this Agreement, e.g. the product activation, shall not be possible following the assignment of rights.

9. Upgrades and Updates

- You must have a valid license for the previous or more inferior version of the software in order to be allowed to use an upgrade or update for the software. Upon transferring this previous or more inferior version of the software to third parties the right to use the upgrade or update of the software shall expire.
- The acquisition of an upgrade or update does not in itself confer any right to use the software.
- The right of support for the previous or inferior version of the software expires upon the installation of an upgrade or update.

10. Limited Warranty

Arturia warrants that the disks on which the software is furnished to be free from defects in materials and workmanship under normal use for a period of thirty (30) days from the date of purchase. Your receipt shall be evidence of the date of purchase. Any implied warranties on the software are limited to thirty (30) days from the date of purchase. Some states do not allow limitations on duration of an implied warranty, so the above limitation may not apply to you. All programs and accompanying materials are provided "as is" without warranty of any kind. The complete risk as to the quality and performance of the programs is with you. Should the program prove defective, you assume the entire cost of all necessary servicing, repair or correction.

11. Remedies

Arturia's entire liability and your exclusive remedy shall be at Arturia's option either (a) return of the purchase price or (b) replacement of the disk that does not meet the Limited Warranty and which is returned to Arturia with a copy of your receipt. This limited Warranty is void if failure of the software has resulted from accident, abuse, modification, or misapplication. Any replacement software will be warranted for the remainder of the original warranty period or thirty (30) days, whichever is longer.

12. No other Warranties

The above warranties are in lieu of all other warranties, expressed or implied, including but not limited to, the implied warranties of merchantability and fitness for a particular purpose. No oral or written information or advice given by Arturia, its dealers, distributors, agents or employees shall create a warranty or in any way increase the scope of this limited warranty.

13. No Liability for Consequential Damages

Neither Arturia nor anyone else involved in the creation, production, or delivery of this product shall be liable for any direct, indirect, consequential, or incidental damages arising out of the use of, or inability to use this product (including without limitation, damages for loss of business profits, business interruption, loss of business information and the like)

even if Arturia was previously advised of the possibility of such damages. Some states do not allow limitations on the length of an implied warranty or the exclusion or limitation of incidental or consequential damages, so the above limitation or exclusions may not apply to you. This warranty gives you specific legal rights, and you may also have other rights which vary from state to state.

9.2 FCC INFORMATION (USA)

Important notice: DO NOT MODIFY THE UNIT!

This product, when installed as indicate in the instructions contained in this manual, meets FCC requirement. Modifications not expressly approved by Arturia may avoid your authority, granted by the FCC, to use the product.

IMPORTANT: When connecting this product to accessories and/or another product, use only high quality shielded cables. Cable (s) supplied with this product **MUST** be used. Follow all installation instructions. Failure to follow instructions could void your FCC authorization to use this product in the USA.

NOTE: This product has been tested and found to comply with the limit for a Class B Digital device, pursuant to Part 15 of the FCC rules. These limits are designed to provide a reasonable protection against harmful interference in a residential environment. This equipment generate, use and radiate radio frequency energy and, if not installed and used according to the instructions found in the users manual, may cause interferences harmful to the operation to other electronic devices. Compliance with FCC regulations does not guarantee that interferences will not occur in all the installations. If this product is found to be the source of interferences, witch can be determined by turning the unit "OFF" and "ON", please try to eliminate the problem by using one of the following measures:

- Relocate either this product or the device that is affected by the interference.
- Use power outlets that are on different branch (circuit breaker or fuse) circuits or install AC line filter(s).
- In the case of radio or TV interferences, relocate/ reorient the antenna. If the antenna lead-in is 300 ohm ribbon lead, change the lead-in to coaxial cable.
- If these corrective measures do not bring any satisfied results, please the local retailer authorized to distribute this type of product. If you cannot locate the appropriate retailer, please contact Arturia.

The above statements apply **ONLY** to those products distributed in the USA.

9.3 CANADA

NOTICE: This class B digital apparatus meets all the requirements of the Canadian Interference-Causing Equipment Regulation.

AVIS: Cet appareil numérique de la classe B respecte toutes les exigences du Règlement sur le matériel brouilleur du Canada.

9.4 **EUROPE**

CE This product complies with the requirements of European Directive 89/336/EEC