

# **GRP-520 Series**

## **3G Gateway**

User Manual v1.20



**High Quality, Industrial Data Acquisition, and Control Products**

## Warranty

All products manufactured by ICP DAS are warranted against defective materials for a period of one year from the date of delivery to the original purchaser.

## Warning

ICP DAS assumes no liability for damages consequent to the use of this product. ICP DAS reserves the right to change this manual at any time without notice. The information furnished by ICP DAS is believed to be accurate and reliable. However, no responsibility is assumed by ICP DAS for its use, or for any infringements of patents or other rights of third parties resulting from its use. This is licensed under the terms of the GNU General Public License version 2.

## Copyright

Copyright 2012 by ICP DAS CO., LTD. All rights reserved worldwide.

## Trademark

The names used for identification only may be registered trademarks of their respective companies.

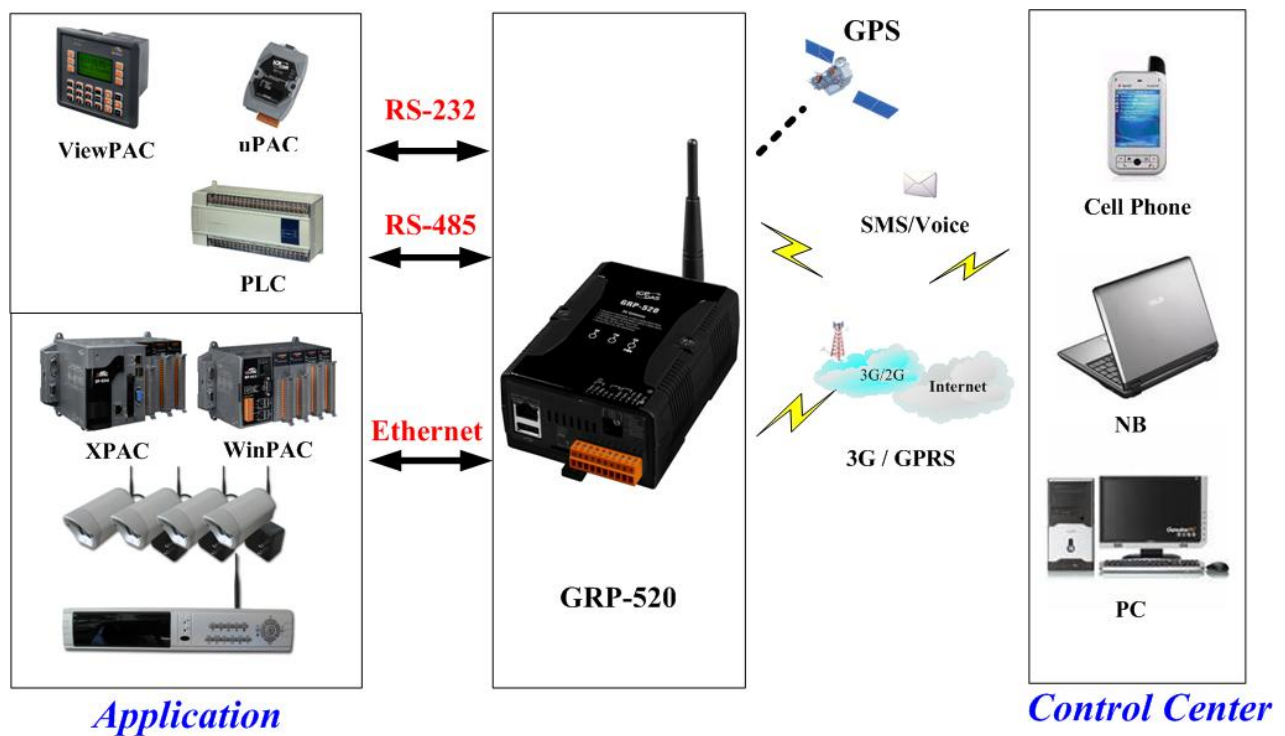
Version	Date	Author	Description
1.00	2013/03/20	Malo	Release version
1.10	2014/02/05	Malo	Add new feature
1.20	2014/08/05	Malo	Add new feature: RTU Client

## Table of Contents

1.	Introduction .....	4
1.1	Features.....	5
1.2	Applications.....	5
2.	Hardware .....	8
2.1	Specifications .....	8
2.2	Appearance and pin assignments.....	9
2.3	Dimensions .....	10
2.4	LED indicators.....	11
2.5	Rotary Switch .....	12
2.6	Installing GRP-520 .....	13
3.	Web Utility .....	14
3.1	Login the Utility .....	14
3.2	Information .....	15
3.3	Network .....	18
3.4	System .....	25
3.5	VxServer.....	29
3.6	RTU Client.....	31
4.	Example .....	38
4.1	3G Router Application.....	38
4.2	Web Server and IP Camera Application .....	41
4.3	Remote I/O Control / Temperature Monitor .....	46
4.4	Modbus/TCP to Modbus/RTU over 3G, and Card Reader Monitor .....	51
4.5	RTU Client for Remote Control Application with RTU API.....	56
4.6	RTU Client for Remote Control Application with OPC DA Server. ....	68
4.7	RTU Client for Remote Control Application with InduSoft.....	71
4.8	Email or FTP report I/O logger file. ....	73

## 1. Introduction

The GRP-520 provided by ICP DAS is a 3G gateway for Ethernet or serial port. With optional GPS model, the GRP-520 can also be a GPS tracking system. It can be used in M2M application fields to transfer the remote I/O, Modbus data or video of the camera via 3G/2G. Within the high performance CPU, the GRP-520 series can handle a large of data and are suit for the hard industrial environment. The GRP-520 series have 3G module, Ethernet interface, and optional GPS module.



## **1.1 Features**

- Support Tri-band WCDMA 2100/1900/850 MHz and Quad-band GSM 850 / 900 / 1800 / 1900 MHz.
- 10/100 Base-TX compatible ethernet eontroller
- COM port: COM1 (3-wire RS232), COM2 (RS-485), COM3 (3-wire RS232)
- GPS : 32 channels with All-In-View tracking (option)
- Support Micro SD card.
- Provide 3G Router function.
- Support port mapping (port forward) function.
- Serial Port to 3G Gateway
- High reliability in harsh environments
- DIN-Rail mountable

## **1.2 Applications**

- Signal Alarm Report System
- 3G Router
- Home/Factory security
- Remote Video Monitor
- Energy Management
- Temperature Monitoring

**Application 1: 3G Router****Application 2: Remote Video Monitor****Application 3: Remote Control (Serial Port to 3G gateway)**

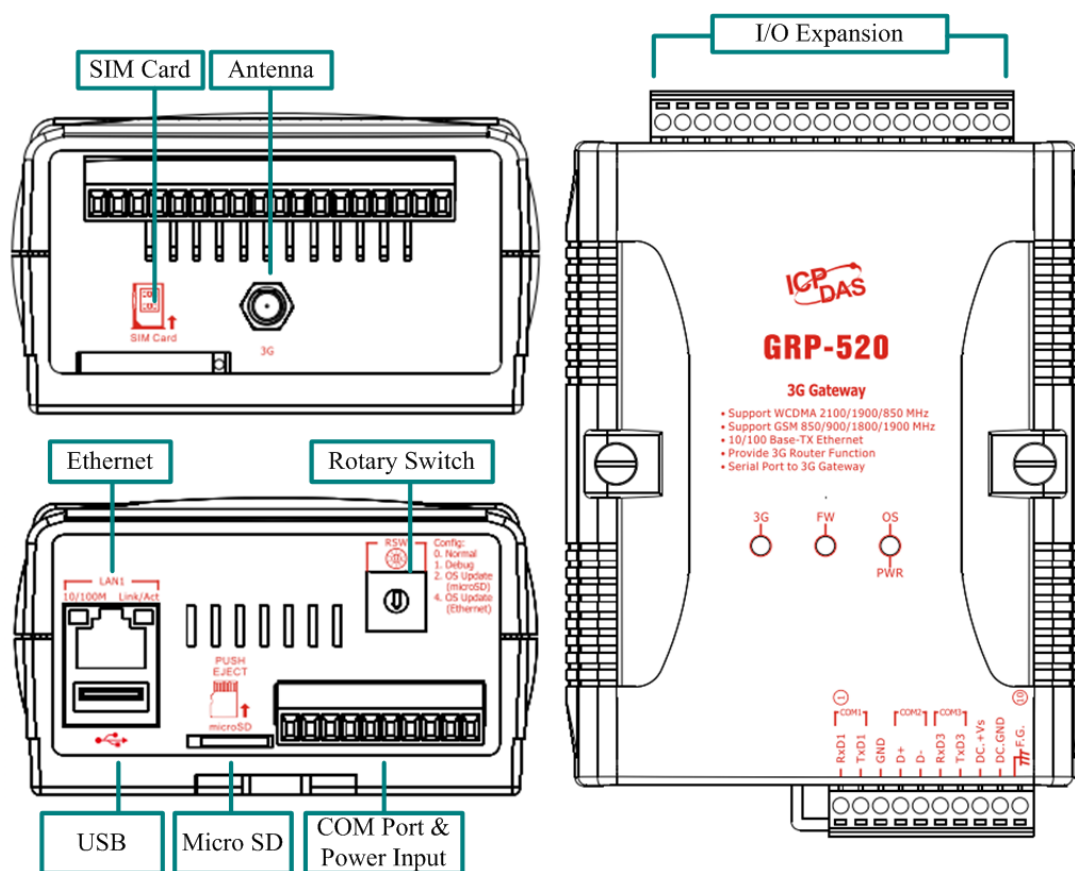


## 2. Hardware

### 2.1 Specifications

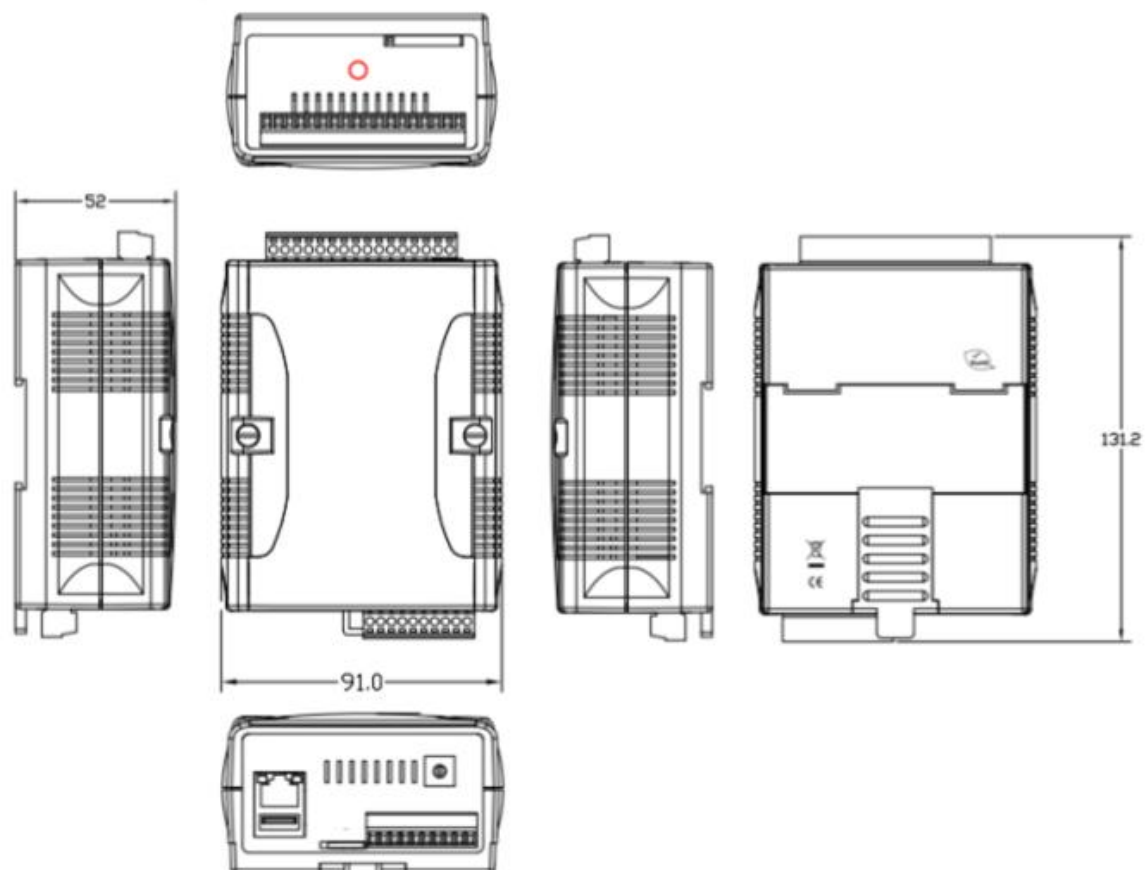
Item	GRP-520
<b>System / Software</b>	
3G Gateway	Ethernet and Serial port (1x RS-232, 1x RS-485) to 3G
Embedded service	Web Server, 3G router
<b>System</b>	
CPU	ARM CPU (312MHz)
SRAM	64 MB
Flash	64 MB
EEPROM	16 KB (Data Retention: 40 years; 1,000,000 erase/write cycles)
Expansion Flash Memory	SD Card (Max. 32GB SDHC)
Expansion Disk	USB disk (format : FAT32)
RTC(Real Time Clock)	Provide seconds, minutes, hours, day of week/month, month and year
64-bit Hardware Serial Number	Yes
Watchdog Timer	Yes
LED Indicator	3 LEDs (SYS/PWR, F.W., 3G)
Rotary Switch	Yes (0~9)
<b>GSM System</b>	
Frequency Band	GSM : 850/900/1800/1900 MHz
GPRS connectivity	GPRS class 12/10; GPRS station class B
DATA GPRS	Downlink transfer: Max. 85.6 kbps; Uplink transfer: Max 42.8kbps
<b>3G System</b>	
Frequency Band	WCDMA 2100/1900/850 MHz
Data Transmission	WCDMA / HSDPA / HSUPA Downlink transfer: Max. 7.2Mbps; Uplink transfer: Max 5.76Mbps
<b>GPS System (option)</b>	
Support Channels	32
Protocol Support	NMEA 0183 version 3.01
<b>Comm. Interface</b>	
Ethernet	RJ-45, 10/100 Base-TX (Auto-negotiating, Auto MDI/MDI-X, LED indicators)
COM1	RS-232 (RxD, TxD and GND); Non-isolated(Console, Debug)
COM2	RS-485 (D2+, D2-); 3000 VDC isolated
COM3	RS-232 (RxD, TxD and GND); Non-isolated
<b>Mechanism</b>	
Casing	Plastic
Dimensions(W x L x H)	91 mm x 132 mm x 52 mm (W x L x H)
Installation	DIN-Rail
<b>Power</b>	
Protection	Power reverse polarity protection
Frame Ground Protection	ESD, Surge, EFT, Hi-Pot
Required Supply Voltage	+10 V <sub>DC</sub> ~ +30 V <sub>DC</sub>
Power Consumption	4.8W ( 200 mA @ 24 V <sub>DC</sub> )
<b>Environment</b>	
Operation Temp.	-25°C to 75°C
Storage Temp.	-30°C to 80°C
Humidity	5~95% non-condensing

## 2.2 Appearance and pin assignments



COM Port & Power Input		
Terminal No.		Pin Assignment
COM1	01	RxD1
	02	TxD1
	03	GND
COM2	04	D+
	05	D-
COM3	06	RxD3
	07	TxD3
Power	08	DC.+VS
	09	DC.GND
	10	F.G.

## 2.3 Dimensions



## 2.4 LED indicators

There are three LED indicators to help users to judge the various conditions of GRP-520. The description is as follows :

- A. PWR(Green) : Power LED to indicate whether the external power is input or not. The description is as follows:

The external power is active	The external power is not active
on	off

- B. OS(Red) : OS LED indicates if the OS is normal or fail.

Normal	Fail
Heart beat (1 sec.)	Always ON or OFF

- C. FW(Red) : This LED indicates the status of VxServer firmware (Serial port to 3G).

Connected	Connecting	Fail
500ms ON / 500ms OFF	Blanking(4 sec)	Always ON or OFF

- D. FW(Green) : This LED indicates the status of RTU Client firmware.

Normal	Fail
500ms ON / 500ms OFF	Always ON or OFF

- E. 3G (Red) : The LED indicates the status of 3G module.  
(the 3G module need about 60 seconds to register network usually)

Registered	3G/GPRS data transmit	Fail
800ms ON / 800ms OFF	200ms ON, 200ms OFF	Always ON or OFF

## 2.5 Rotary Switch

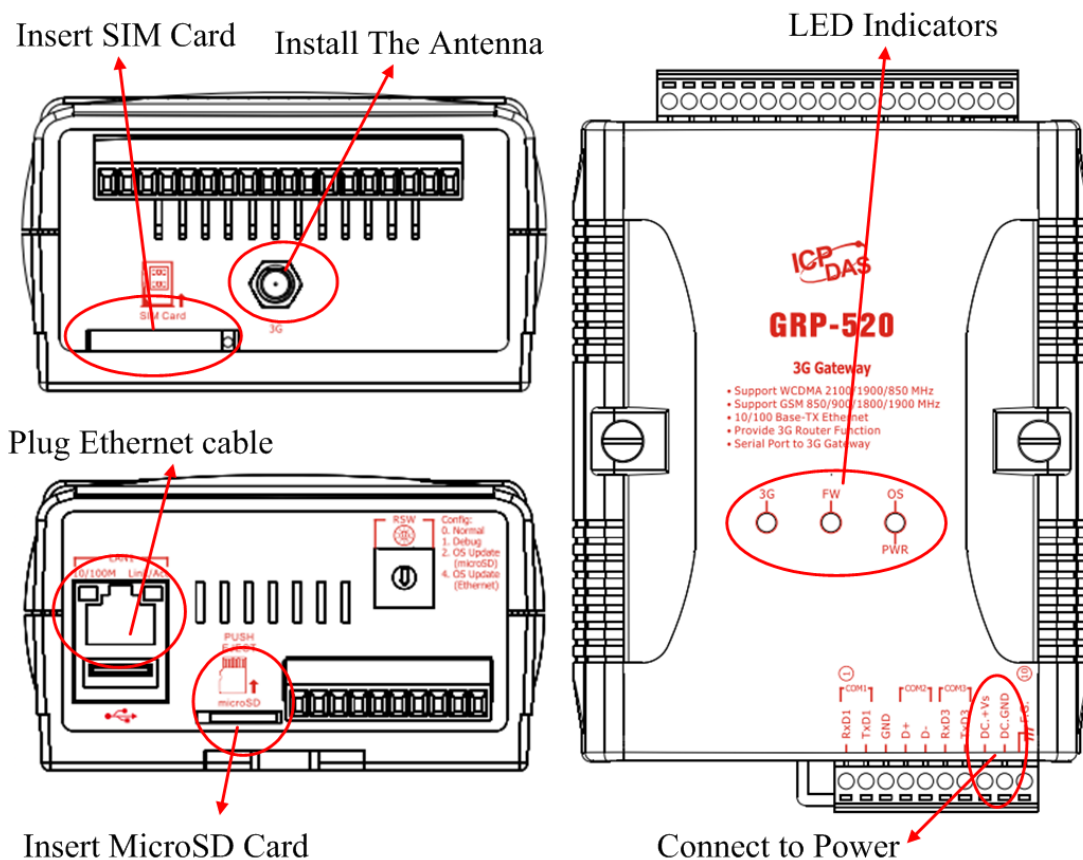
There are some functions of rotary switch. The description is as follows :

- A. 0 : Normal mode, default position.
- B. 1 : Debug mode, this a engineering mode, we can communicate with the OS console.
- C. 2 : OS Update with MicroSD card. 2G SD card is supported.
- D. 4 : OS Update with Ethernet. It is used in the factory. Please don't use it.
- E. 8 : Factory default IP. If you set as 8, and then reset the device, its Ethernet IP will be "192.168.255.1" . if you forgot your device IP, you can use this function to re-configure your device IP.
- F. 9 : Factory default setting. If you forgot your password, you can follow the steps below:
  - (1) set rotary switch as 9
  - (2) and connect TxD3 and RxD3 together
  - (3) reset your device
  - (4) if the Red and Green FW Led blinking, it means restore as factory default setting successfully. Please turn rotary switch as 0.

## 2.6 Installing GRP-520

If users want to start GRP-520 normally, it needs to follow these steps to install the GRP-520 below:

- A. Install the antenna
- B. Plug in the normal SIM card (Before apply the SIM card, confirm it is OK by mobile phone.)
- C. Plug the Ethernet cable if you need it.
- D. If you want to use the Micro SD card, please insert it into the slot.
- E. Turn the rotary switch to 0 (normal mode). The COM1 will be the console in position 1 (debug mode), and the default username is “root”, default password is “root”.
- F. Connect the DC.+VS and DC.GND to the power supply.
- G. It is needed to wait about 20 ~ 30 seconds for OS booting. After finishing the process, GRP-520 would be in normal operation mode and the OS LED would blank as heart beat per 1 sec.
- H. It is needed to wait about 30 ~ 60 seconds to search the 3G/2G base and register to the ISP. After finishing the process, the 3G LED would blank per 1 sec.



### 3. Web Utility

You must configure GRP-520 from web utility before using.

#### 3.1 Login the Utility

Please login before you use the web utility. The default username is “admin”, and the default password is “admin”

Default IP = “192.168.255.1”

Default Mask = “255.255.0.0”

Default Gateway = “192.168.0.1”



After login, the screenshot is showed as below:

**Information**

- [Device Info](#)
- [Network Info](#)
- [Storage Info](#)

**Network**

- [Ethernet](#)
- [2G/3G](#)
- [3G/GPRS](#)
- [Reconnection](#)
- [DNS](#)
- [DDNS](#)
- [DHCP Server](#)
- [Routing](#)
- [Port Mapping](#)
- [Diagnostic](#)

**System**

- [Password](#)
- [Reboot](#)
- [Backup/Restore](#)
- [Restore Factory](#)
- [Time](#)
- [System Service](#)

**VxServer**

- [VxServer](#)

Web Ver: 1.0.0  
2013/03/04

Ethernet	
Mode	static
MAC address	00:0D:E0:20:00:09
IP Address	192.168.27.52
Mask	255.255.0.0

3G/GPRS Network information	
Status	connected
IP Address	1.200.149.90
P-t-P	10.64.64.64
Mask	255.255.255.255

Modem information	
PIN Code	READY
Register Status	Registered
Signal Quality	46%

## 3.2 Information

You can get the basic information of the device here.

### 3.2.1 Device Information

This page provides basic device information:

Device Information	
Product Name	GRP-520
Serial Number	01 00 00 15 EC D2 6C 7A
Kernel Version	2.6.34

- (1) Product Name: the Name of your product
- (2) Serial Number: only one number of ICPDAS product
- (3) OS Kernel Version: linux kernel version.

### 3.2.2 Network Information

This page provides basic network information:

Ethernet	
Mode	static
MAC address	00:0D:E0:20:00:09
IP Address	192.168.255.1
Mask	255.255.0.0

3G/GPRS Network information	
Status	connected
IP Address	1.200.28.120
P-t-P	10.64.64.64
Mask	255.255.255.255

Modem information	
PIN Code	READY
Register Status	Registered
Signal Quality	56%

- (1) Ethernet: Ethernet information
  - Mode: static IP or DHCP
  - MAC address: a unique identifier assigned to network interfaces.
  - IP Address: a computer's address under the Internet Protocol
  - Mask: Mask will be provided from Gateway provider.
- (2) 3G/GPRS Network information: the information will show out after dial up
  - Status: “connected” mean the modem dial-up success.
  - IP Address: the IP is provide by ISP provider.
  - P-t-P: provide by ISP provider
  - Mask: provide by ISP provider
- (3) Modem information:
  - PIN Code: the status of PIN Code. Please refer to below:  
 READY: PIN Code is ready.  
 SIM PIN: need PIN code of SIM card  
 SIM PUK: need PUK code of SIM card  
 SIM failure: Access SIM Card failure

- Register Status: Indicating GRP-520 connect to 3G base successful or not.
- Signal Quality: the 3G signal quality.

### 3.2.3 Storage Information

This page provides information about “Micro SD card”, “USB Disk”:

USB Disk	
Size	3936220 KB
used	2584 KB
Available	3933636 KB
Path (Mount Point)	/media/usbhd-sda1

Micro SD Card	
Size	31154688 KB
used	25344 KB
Available	31129344 KB
Path (Mount Point)	/media/mmcblk0p1

(1) USB Disk / SD card:

- Size: total size of storage
- used: the size is used
- Available: free space in the storage
- Path: the mount point in file system.

### 3.3 Network

The user can configure the Network functions here.

#### 3.3.1 Ethernet

This page provides the basic settings of Ethernet:

Ethernet	
IP Address	<input type="text" value="192.168.27.50"/>
Mask	<input type="text" value="255.255.0.0"/>
Gateway	<input type="text" value="192.168.0.53"/>
<input type="button" value="Modify"/>	

- (1) IP Address: IP of Ethernet.
- (2) Mask: the Mask of the gateway.
- (3) Gateway: IP of the gateway.

#### 3.3.2 3G Configure

This page provides basic settings of 3G network:

2G/3G Configure	
PIN Code	<input type="text" value="●●●●"/>
Phone Number	<input type="text" value="*99***1#"/> (1)
APN	<input type="text" value="internet"/> (2)
User Name	<input type="text"/> (2)
Password	<input type="text"/> (2)
Auto-Dialing	<input checked="" type="checkbox"/> Enable
<input type="button" value="Modify"/>	
(1): usually use *99# or *99***1# (2): please ask your SIM Card provider	

- (1) PIN Code: PIN Code are 4 character number provided by SIM Card provider
- (2) Phone Number: usually fill it as “\*99\*\*\*1#” or “\*99#”. The number is depended on SIM Card provider
- (3) APN: Access Point Name, please ask your SIM Card provider.

- (4) User Name: the username for dial-up. Please ask your SIM Card provider.
- (5) Password: the password for dial-up. Please ask your SIM Card provider.
- (6) Auto-Dialing: Enable this function to dial-up to 3G network after power on.

### 3.3.3 3G/GPRS Reconnection

This function can keep the device always on 3G/GPRS network, but it will send the IMCP signals to check 3G/GPRS network.

The default setting is “Disable” to prevent it from using extra packets.

PS. Some ISP upgrades their system cause GRP-520 difficult to dial-up in Taiwan. Please enable this function to avoid this problem. When GRP-520 dial-up fails, it will try to solve this problem automatically. (It maybe take about 10 minutes, and this problem was solved in v1.1.1 and later).

3G/GPRS Reconnection	
Server IP	<input type="text" value="8.8.8.8"/>
Max. Retry	<input type="text" value="10"/>
Interval Time	<input type="text" value="30"/>
Timeout	<input type="text" value="50"/>
Enable Funcion	<input type="checkbox"/> Enable
Alive	False
Firmware Version	v1.1.1 2014/01/13
<input type="button" value="Modify"/>	
(1):This function will run immediately after you press "Modify" button (2):GSM module will be reset after Max. retry (3):System will reboot after GSM module reset 100 times	

- (1) Server IP: the target IP or URL that you want to send signal (ping the target IP).
- (2) Max. Retry: if the system retry time is over this number, it will reset 3G modem and dial-up to try again.
- (3) Interval Time: the interval time between this retry and last.
- (4) Timeout: the device will connect to 3G network for a period of 50 second (default value) after resetting the Modem, and then the system will start check the connection of 3G network.
- (5) Enable Function: if you enable this function, it will run immediately.
- (6) Alive: the firmware status. “true”(color green) means “alive”. “false”(color gray) means “not alive”..

### 3.3.4 DNS Server

The user can set DNS server IP here:

DNS Server	
Primary DNS Server	<input type="text" value="168.95.1.1"/>
Alternate DNS Server	<input type="text" value="8.8.8.8"/>
<input type="button" value="Modify"/>	

- (1) Primary DNS Server: the device will use it to get DNS service first.
- (2) Alternate DNS Server: if “Primary DNS Server” is invalid, the device will use “Alternate DNS Server”.

### 3.3.5 DDNS Configure

**DDNS** is a method of updating, in real time, a Domain Name System (DNS) to point to a changing IP address on the Internet:

DDNS Configure	
Server	<input type="text" value="default@no-ip.com"/> <input type="button" value="v"/>
Domain	<input type="text" value="yourDomain.no-ip.org"/>
Username	<input type="text" value="yourUserName"/>
Password	<input type="text" value="yourPassword"/>
Period	<input type="text" value="60"/> seconds
Enable	<input checked="" type="checkbox"/> Enable
<input type="button" value="Modify"/>	

- (1) Server: the address of DDNS service provider.
- (2) Domain: The domains name you registered.
- (3) Username: the username of DDNS service.
- (4) Password: the password of DDNS service.
- (5) Period: the period time (seconds) to update your address.
- (6) Enable: Enable DDNS function.

### 3.3.6 DHCP Server

The Device could be a DHCP Server. The user can set the IP range for DHCP client.

DHCP Server	
Subnet	192.168.0.0
Netmask	255.255.0.0
Lease-time	43200
Routers	192.168.255.1 device IP=192.168.255.1
Range	192.168.255.100 ~ 192.168.255.125
Enable	<input type="checkbox"/> Enable
<input type="button" value="Modify"/>	

- (1) Subnet, Netmask, Lease-time: these items are read-only.
- (2) Routers: the router IP. It usually is set as your device IP.
- (3) Range: the IP range that DHCP server assign to DHCP client.
- (4) Enable: Enable DHCP Server service.

\* If your device need link to Internet via 3G/GPRS, please enable the “Routing rule” for “DHCP Range” here. About “routing rule”, please refer next section.

### 3.3.7 Routing

This page provides routing rule configuration.

ROUTING Rule			
Rule NO.	IP	Mask	Target
0	<input type="text" value="192.168.27.0"/>	<input type="text" value="24"/> ▼	<input type="text" value="ppp0"/> ▼
1	<input type="text" value="192.168.0.0"/>	<input type="text" value="28"/> ▼	<input type="text" value="ppp0"/> ▼
2	<input type="text"/>	<input type="text"/> ▼	<input type="text"/> ▼
3	<input type="text"/>	<input type="text"/> ▼	<input type="text"/> ▼
4	<input type="text"/>	<input type="text"/> ▼	<input type="text"/> ▼
5	<input type="text"/>	<input type="text"/> ▼	<input type="text"/> ▼
6	<input type="text"/>	<input type="text"/> ▼	<input type="text"/> ▼
7	<input type="text"/>	<input type="text"/> ▼	<input type="text"/> ▼
8	<input type="text"/>	<input type="text"/> ▼	<input type="text"/> ▼
9	<input type="text"/>	<input type="text"/> ▼	<input type="text"/> ▼
<input type="button" value="Modify"/>			

- (1) IP: IP address.
- (2) Mask: the mask will effect how many IP this rule manages.  
 "24" = 255 IPs, "28" = 16 IPs, "32" = 1 IPs.
- (3) Target: the target interface of the rule.

**For example:**

The Rule 0: This rule will push the socket packages from the address 192.168.27.0 ~ 192.168.27.255 forward to "ppp0" (3G network).

The Rule 1: This rule will push the socket packages from the address 192.168.0.0 ~ 192.168.0.15 forward to "ppp0" (3G network).

### 3.3.8 Port Mapping (Port Forward)

This page provides Port Mapping rule configuration.

Port Mapping Rule					
Rule NO.	Type	From	Port	Target IP	Target Port
0	TCP ▾	ppp0 ▾	10080	192.168.0.10	80
1	TCP ▾	ppp0 ▾	10021	192.168.0.10	21
2	▾	▾			
3	▾	▾			
4	▾	▾			
5	▾	▾			
6	▾	▾			
7	▾	▾			
8	▾	▾			
9	▾	▾			

- (1) Type: the protocol type. There are “TCP” and “UDP”
- (2) From: the interface that the socket comes from.  
”ppp0” is 3G interface.
- (3) Port: the port that the socket comes from.
- (4) Target IP: the IP that the socket goes forward.
- (5) Target Port: the Port of the “Target IP”.

**For example:**

The Rule 0: This rule will bind the socket from the “ppp0” and Port=”10080” with 192.168.0.10:80.

The Rule 1: This rule will bind the socket from the “ppp0” and Port=”10021” with 192.168.0.10:21.

### 3.3.9 Diagnostic

This page provides the tools to check the problem of the network.

Ping Test	
Target IP	<input type="text" value="8.8.8.8"/>
Result	<input type="text"/>
<input type="button" value="ping"/>	

Traceroute	
Target IP	<input type="text" value="8.8.8.8"/>
Result	<input type="text"/>
<input type="button" value="traceroute"/>	
This function will take time more than 2 minute.	

Route Information	
Result	<input type="text"/>
<input type="button" value="route"/>	

- (1) Ping Test: this tool will ping “Target IP”, and show result below.
- (2) Traceroute: this tool will trace routing path to “Target IP”, and show the result below.
- (3) Route Information:: this tool will show route setting below.

## 3.4 System

The user can configure “password”, “system parameter”, reboot the device and restore factory settings here.

### 3.4.1 Password

The user can change the password of the web utility here.

Change Password	
New Password	<input type="text"/>
Confirm	<input type="text"/>
<input type="button" value="Modify"/>	
The length of password must be more then 4 characters that limited in a~z, A~Z, 0~9.	

- (1) Password: new password.
- (2) Confirm: confirm the password again.

### 3.4.2 Reboot

The user can reboot the device here.

Notice!!
Are you sure to reboot? please wait a minute for system rebooting after you press reboot button.
<input type="button" value="Reboot"/>

### 3.4.3 Reboot Timer

The user can use this function to reboot system automatically.

Reboot Timer (Reboot system automatically)	
Interval Time	1 hours
Enable Function	<input type="checkbox"/> Enable
Alive	False
<input type="button" value="Modify"/>	
(1): This function will run immediately after you press "Modify" button	

- (1) Interval Time: Interval Time to reboot system.
- (2) Enable: Enable Reboot Timer function.

### 3.4.4 Backup & Restore

The user can backup the device settings and restore it here.

Backup & Restore	
Backup	<input type="button" value="Backup"/>
Restore	<input type="button" value="瀏覽..."/> <input type="button" value="Restore"/>

- (1) Backup: Press "Backup" button to backup settings into your PC.
- (2) Restore: Press "Browse" button to select file, and then press "Restore" button to store your settings.

### 3.4.5 Restore Factory

The user can restore the device setting to factory default.

Restore Factory Setting
The device will reboot after restoring factory settings.
<input type="button" value="Restore"/>

### 3.4.6 System Time

This page provide information about the time of the device.:

Time Configure	
Device Time (24-hour)	2014 / 08 / 06 16 : 34 : 58 <input type="button" value="Set Time"/>
NTP Server (Time Server)	tock.stdtime.gov.tw Ex: tock.stdtime.gov.tw
Timezone	+8 <input type="button" value="check timezone"/>
Enable NTP Function	<input checked="" type="checkbox"/> Enable
Alive	True
Firmware Version	v1.0.0 2014/05/22
<input type="button" value="Modify"/>	

- (1) Set Time: set the time of GRP-520 the same as your computer.
- (2) NTP Server: device will connect to the NTP Server to synchronize time.
- (3) Timezone: if you do not know your timezone, please click the link “check timezone” to find out.
- (4) Enable NTP Function: if you enable it, GRP-520 will update time automatically.

### 3.4.7 System Service

This page indicates the status of system services.

System Process Configure			
Process Name	Alive	Start	Stop
pppd	false	<input type="button" value="Start"/>	<input type="button" value="Stop"/>
dhcpcd	false	<input type="button" value="Start"/>	<input type="button" value="Stop"/>
ddns	true	<input type="button" value="Start"/>	<input type="button" value="Stop"/>
If you operate the services here but not config page, the result will disappear after reboot.			

- (1) Process Name:
  - pppd: this process will dial-up to 3G network.
  - dhcpcd: DHCP Server.
  - ddns: ddns client process. It will auto update IP.
- (2) Alive: the process status. “true”(color green) means “alive”. “false”(color gray) means “not alive”.

- (3) Start: click the button to start this process.
- (4) Stop: click the button to stop this process.

## 3.5 VxServer

The user can configure VxServer firmware here.

### 3.5.1 VxServer

The user can configure VxServer firmware here.

Virtual COM Function (VxServer)	
Server IP	192.168.1.1
Server Port	11000 default=11000
Heartbeat Time	10 10~65535 seconds
Device ID	1 1~255, unique ID for device
Alias	GRP-520 Max. Length = 8
Time Interval	50 1~5000 ms, default=50
Data Length	1000 10~1000 bytes, default=1000
Modbus TCP to RTU (Port1)	False COM2 of GRP-520 --> TCP Port 10001
Modbus TCP to RTU (Port2)	False COM3 of GRP-520 --> TCP Port 10002
Default Baudrate (Port1)	115200 bps
Default Baudrate (Port2)	115200 bps
Default Format (Port1)	8N1 (Data bit, Parity, Stop bit)
Default Format (Port2)	8N1 (Data bit, Parity, Stop bit)
Enable Funcion	<input type="checkbox"/> Enable
Alive	False
Firmware Version	V1.01 2014/01/29
<input type="button" value="Modify"/>	
(1)Heartbeat Time: if this value is small, it is sensitive to detect network disconnected (2)Virtual IP: please set it different from other virtual COM device	

- (1) Server IP: Server IP or URL.
- (2) Server Port: the port of the server.
- (3) Heartbeat Time: if setting this value small, it is sensitive to detect network disconnected.
- (4) Device ID: ID of the device. If you set it as "1", you will find that "visual IP" is "192.168.20.1" on the server side.
- (5) Alias: an alias of device. Max. length is 8 characters.

- (6) Time Interval: if the Time Interval between the two serial port data is more than this value, the data will be sliced into two network packet. And if there is no enough time interval, but data length is over 1000 bytes (default value), the data still be sliced into two network packet.
- (7) Data Length: if serial port data length is over this value, the data will be sliced into two packets. Usually you just set this value as 1000 if you don't need this function. (this value is limited by network protocol)
- (8) Modbus TCP to RTU: Modbus/TCP to Modbus/RTU gateway function. Port1 is COM2 of GRP-520 (RS-485); Port2 is COM3 of GRP-520 (RS-232).
- (9) Default Baudrate: this value is dependent on your Modbus RTU device. Please set this value is the same as your Modbus RTU device.
- (10) Default Format: configuration of "Data bits", "Parity" and "Stop bit".
  - 8, 7 mean 8 or 7bits of Data bits
  - N, O, E mean None, Odd, Even of Parity
  - 1, 2 mean 1 or 2 bits of Stop bit
- (11) Enable Function: Enable the firmware immediately.
- (12) Alive: the firmware status. "true"(color green) means "alive". "false"(color gray) means "not alive".

### 3.6 RTU Client

The user can configure RTU Client function here. The RTU Client function will connect to [RTU Center](#), please refer GRP-520 website for more information.

#### 3.6.1 RTU Client

The user can configure RTU Client firmware function here. There are three tabs: (1)Main Info. (2)Modbus Number (3)FTP/Email

● Main Info. Tab:

Main Info.	Modbus Device	FTP / Email
Server Address	<input type="text" value="192.168.1.100"/>	
Server Port	<input type="text" value="10000"/>	default=10000
Station ID	<input type="text" value="1"/>	1~65535
Data Update Period(sec.)	<input type="text" value="5"/>	0~86400 (0=disable)
Heartbeat Period(sec.)	<input type="text" value="0"/>	1~86400 (a day)
Baud Rate (RS-485 for Modbus/RTU)	<input type="text" value="9600"/> ▼ bps	
Data Bit	<input type="text" value="8"/> ▼	
Parity	<input type="text" value="N"/> ▼	
Stop Bit	<input type="text" value="1"/> ▼	
Modbus Timeout (ms)	<input type="text" value="1000"/>	50~99999, default=1000
Enable Firmware	<input checked="" type="checkbox"/> Enable	
Alive	<input checked="" type="checkbox"/> True	
<input type="button" value="Modify"/>		

- (1) Server Address: Server IP or Domain Name.
- (2) Server Port: the port of the server.
- (3) Station ID: the ID for this device. (do not be the same with other RTU device)
- (4) Data Update Period (sec.): set report time interval. GRP-520 will report all data to RTU Center every interval time your setting.
- (5) Heartbeat Period (sec.): set heartbeat time interval. 3G/GPRS connection will be terminate by ISP, this parameter can detect broken connection early. "Heartbeat Period" must be smaller than "Data Update Period".

- (6) Baud Rate (RS-485 for Modbus/RTU): the baud rate of the COM2 (RS-485).
  - (7) Data bit: the data bit of COM2.
  - (8) Parity: the parity bit of COM2.
  - (9) Stop bit: the stop bit of COM2.
  - (10) Modbus Timeout (ms): the Timeout value of Modbus.
  - (11) Enable Function: enable the RTU Client function.
  - (12) Alive: the firmware status. “true”(color green) means “alive”. “false”(color gray) means “not alive”.
- Modbus Device: the interface for adding Modbus I/O device.

Main Info.		Modbus Number		Email/FTP
Modbus Device Number : 1			Add	ET-7005 ▼
1	Name : Custom		Edit	<div> Custom  ET-7002  ET-7005  ET-7015  ET-7016  ET-7017  ET-7017-10  ET-7018  ET-7019  ET-7020 </div>

Main Info.		Modbus Device		Email/FTP
Modbus Device Number : 0		<input type="button" value="Add"/> ET-7050 ▼		
1	Name :	<input type="button" value="Edit"/> <input type="button" value="Delete"/>		
Device Name	ET-7050	Max Length=20		
Device ID	1	1~255		
IP	192.168.11.25	empty for Modbus/RTU		
Port	502	Default=502, 1~65535		
DI Number	12	0~32		
DO Number	6	0~32		
AI Number	0	0~16		
AO Number	0	0~16		
DI Address	0	0~65535		
DO Address	0	0~65535		
AI Address	0	0~65535		
AO Address	0	0~65535		
<input type="button" value="Modify"/> <input type="button" value="Cancel"/>				

- (1) Modbus Device Number: display the modbus device number here.  
You can choose a model in the list, and then use the “Add” button to add a new modbus device.
- (2) Device Name: the Name of the modbus device. This Name will be showed in RTU Center.
- (3) Device ID: the modbus ID.
- (4) IP: the IP of modbus/TCP device. Keep it empty for Modbus/RTU device.
- (5) Port: the Port number of modbus/TCP device.
- (6) DI Number: the number of DI channel.
- (7) DO Number: the number of DO channel.
- (8) AI number: the number of AI channel.
- (9) AO number: the number of AO channel.
- (10) DI Address: the start address for reading DI value.
- (11) DO Address: the start address for reading DO value.
- (12) AI Address: the start address for reading AI value.
- (13) AO Address: the start address for reading AO value.

- FTP / Email:

this function will send back all I/O data log file automatically. The period time to send is depending on “Max. Time per Log File (hour)” parameter.

Main Info.	Modbus Device	FTP / Email
Data Log Interval (sec.)	60	0~86400 (0=disable)
Max. Time per Log File (hour)	6	1~24 hour
FTP Server Address	192.168.12.2	empty --> disable FTP
FTP Port	21	default=21
FTP Username	test	
FTP Password	test	
Enable FTP Funcion	<input type="checkbox"/> Enable	
Email From	abc@yahoo.com	empty --> disable Email Ex: abc@gmail.com
Email To	xyz@gmail.com	Ex: xyz@gmail.com
Example for 2 or more contact	xx@gmail.com,yy@gmail.com	
Email Server	smtp.mail.yahoo.com	Ex: smtp.gmail.com
Email Server Port	25	Ex: 25
Email Username	abc	Ex: abc
Email Password	123abc	Ex: 123abc
Enable Email Funcion	<input type="checkbox"/> Enable	
<input type="button" value="Modify"/>		

(1) Data Log Interval (sec.): the time interval to record I/O data to logger file. **Set as “0” to disable all function in this tab.**

(2) Max. Time per Log File (hour): the time interval to change log file and send log file via Email or FTP. GRP-520 will change logger file before the file be over 3 MB, and move old logger file into “LOGFILE” folder, and send out the file at the same time.

If you enable FTP or Email function, GRP-520 will copy old logger file into “FTP\_UPLOAD” and “MAIL\_UPLOAD” for sending out files.

If send FTP or Email logger file fails, GRP-520 will send files next time.

- (3) FTP Server Address: FTP Server IP or Domain Name.
- (4) FTP Port: the port of the FTP server.
- (5) FTP Username: username for login
- (6) FTP password: password for login
- (7) Enable FTP Function: enable FTP report function.
- (8) Email From: the email will be sent from this address.
- (9) Email To: the email address that will receive logger file. Using “,” to separate each mail address  
 Example:  
 for single receiver: xxx@gmail.com  
 for multi-receiver: xxx@gmail.com,yyy@gmail.com
- (10) Email Server: the server address of the email server.
- (11) Email Server Port: the server port of the email server. Usually it will be 25, 465, or 587.
- (12) Email Username: the username of your email account.
- (13) Email Password: the password of your email account.
- (14) Enable Email Function: Enable email report function.

### 3.6.2 FTP Test

The user can test all configure for FTP here.

FTP Configure Test		
FTP Server Address	<input type="text" value="192.168.12.2"/>	empty --> disable FTP
FTP Port	<input type="text" value="21"/>	default=21
FTP Username	<input type="text" value="test"/>	
FTP Password	<input type="text" value="test"/>	
Result		
<input type="button" value="Test"/>		

- (1) FTP Server Address: FTP Server IP or Domain Name.
- (2) FTP Port: the port of the FTP server.
- (3) FTP Username: username for login
- (4) FTP password: password for login

### 3.6.3 Email Test

The user can test all configure for Email here.

Email Configure Test		
Email From	<input type="text" value="abc@gmail.com"/>	Ex: abc@gmail.com
Email To	<input type="text" value="xyz@gmail.com"/>	Ex: xyz@gmail.com
Email Server	<input type="text" value="smtp.gmail.com"/>	Ex: smtp.gmail.com
Email Server Port	<input type="text" value="25"/>	Ex: 25 or 587
Email Username	<input type="text" value="abc"/>	Ex: abc
Email Password	<input type="text" value="123abc"/>	Ex: 123abc
Result		
<input type="button" value="Test"/>		

- (1) Email From: the email will be sent from this address.
- (2) Email To: the email address that will receive logger file. Using “,” to separate each mail address  
 Example:  
 for single receiver: xxx@gmail.com  
 for multi-receiver: xxx@gmail.com,yyy@gmail.com
- (3) Email Server: the server address of the email server.
- (4) Email Server Port: the server port of the email server. Usually it will be 25, 465, or 587.
- (5) Email Username: the username of your email account.
- (6) Email Password: the password of your email account.
- (7) “Test” button: Pressing this button, GRP-520 will send a test mail to the mail address in “Email To” field.

### 3.6.4 Modbus Test

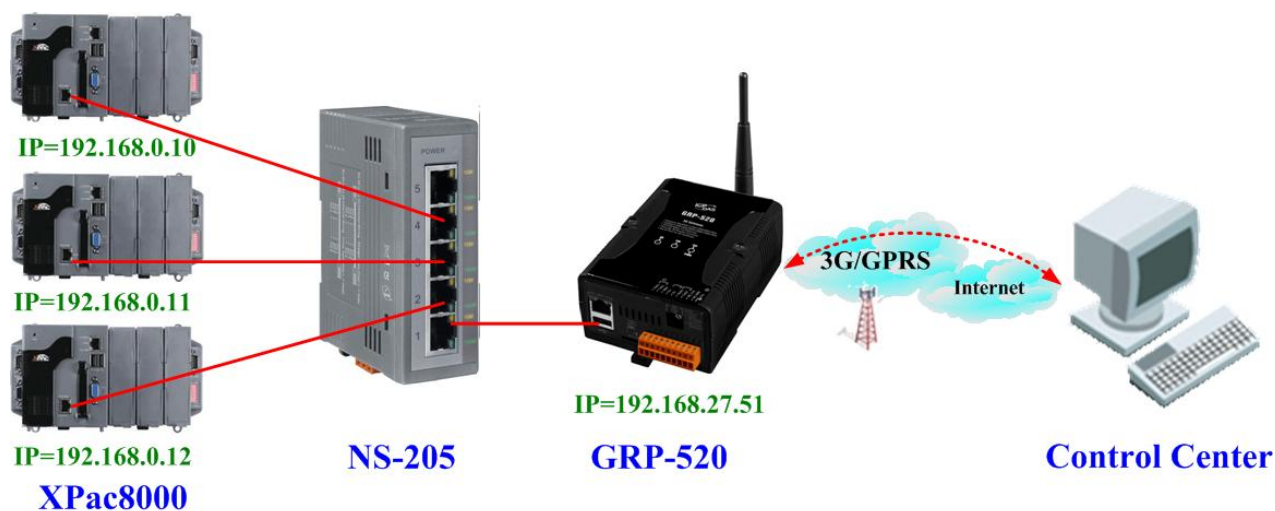
The user can test all configure for Modbus here. There is the result message for testing ET-7026.

Modbus Configure Test	
Result	<pre> modbus debug start DEBUG [2014-08-15 17:20:57] [1] DI value= (0, 0) DEBUG [2014-08-15 17:20:57] [1] DO value= (0, 1) DEBUG [2014-08-15 17:20:57] [1] AI value= (65535, 65535, 65535, 65535, 65535, 65535) DEBUG [2014-08-15 17:20:57] [1] AO value= (0, 273)           </pre>
<input type="button" value="Test"/>	
MODBUS Exception Codes: 01: ILLEGAL FUNCTION 02: ILLEGAL DATA ADDRESS 03: ILLEGAL DATA VALUE 04: SLAVE DEVICE FAILURE 05: ACKNOWLEDGE 06: SLAVE DEVICE BUSY 08: MEMORY PARITY ERROR 0A: GATEWAY PATH UNAVAILABLE 0B: GATEWAY TARGET DEVICE FAILED TO RESPOND	

## 4. Example

### 4.1 3G Router Application

This example shows the steps to share 3G network to 3 XPac8000.



- (1) Please configure the Ethernet of XPac8000 as:

IP=192.168.0.10 ~ 12

Mask="255.255.0.0"

gateway = "192.168.27.51".

- (2) Set the Ethernet IP of GRP-520.

Ethernet	
Mode	Static <input type="button" value="v"/>
IP Address	192.168.27.51
Mask	255.255.0.0
Gateway	
<input type="button" value="Modify"/>	

**Information**

- [Device Info](#)
- [Network Info](#)
- [Storage Info](#)
- Network**
- [Ethernet](#)
- [2G/3G](#)
- [DNS](#)
- [DDNS](#)
- [DHCP Server](#)
- [Routing](#)
- [Port Mapping](#)

- (3) Set Pin code of your SIM card, and Enable “Auto-Dialing” function.

Set “User Name” and “Password” if your SIM card need it.

Press “Modify” to save

<b>Information</b> <a href="#">--Device Info</a> <a href="#">--Network Info</a> <a href="#">--Storage Info</a> <b>Network</b> <a href="#">--Ethernet</a> <a href="#">2G/3G</a> <a href="#">--3G/GPRS</a> <a href="#">Reconnection</a> <a href="#">--DNS</a> <a href="#">--DDNS</a> <a href="#">--DHCP Server</a> <a href="#">--Routing</a> <a href="#">--Port Mapping</a> <a href="#">--Diagnostic</a> <b>System</b> <a href="#">--Password</a>	<b>2G/3G Configure</b>	
	PIN Code	....
	Phone Number	*99***1# (1)
	APN	internet (2)
	User Name	(2)
	Password	(2)
	Auto-Dialing	<input type="checkbox"/> Enable
	<input type="button" value="Modify"/>	
	(1):usually use *99# or *99***1# (2):please ask your SIM Card provider	

- (4) Enable “3G/GPRS Reconnection” function to keep your 3G/GPRS network always online (usually, ISP will disconnect your connection once every 1~3 days).

Generally, you can set the Server IP as your server’s IP or google’s DNS server IP (8.8.8.8). If you use MDVPN, please set the Server IP as your Server IP that doesn’t deny ICMP service (Ping).

Press “Modify” after you finish all settings.

<a href="#">--Network Info</a> <a href="#">--Storage Info</a> <b>Network</b> <a href="#">--Ethernet</a> <a href="#">2G/3G</a> <a href="#">3G/GPRS</a> <a href="#">Reconnection</a> <a href="#">--DNS</a> <a href="#">--DDNS</a> <a href="#">--DHCP Server</a> <a href="#">--Routing</a> <a href="#">--Port Mapping</a> <a href="#">--Diagnostic</a> <b>System</b> <a href="#">--Password</a> <a href="#">--Reboot</a> <a href="#">--Reboot Timer</a> <a href="#">--Backup/Restore</a>	<b>3G/GPRS Reconnection</b>	
	Server IP	8.8.8.8
	Max. Retry	10
	Interval Time	30
	Timeout	50
	Enable Function	<input checked="" type="checkbox"/> Enable
	Alive	True
	Firmware Version	v1.1.1 2014/01/13
	<input type="button" value="Modify"/>	
	(1):This function will run immediately after you press "Modify" button (2):GSM module will be reset after Max. retry (3):System will reboot after GSM module reset 100 times	

- (5) Set routing rule to share 3G network. This setting will share 3G network to IP address from 192.168.0.0~192.168.0.255.

Press “Modify”

--Device Info

--Network Info

--Storage Info

**Network**

--Ethernet

--2G/3G

--DNS

--DDNS

--DHCP Server

**Routing**

--Port Mapping

--Diagnostic

**Process**

--System

--User

**System**

--Password

--Reboot

--Backup/Restore

--Restore Factory

ROUTING Rule			
Rule NO.	IP	Mask	Target
0	192.168.0.0	24	ppp0
1			
2			
3			
4			
5			
6			
7			
8			
9			

- (6) Please reboot GRP-520 to enable settings. (you can reboot from the web or the power source)

**Information**

--Device Info

--Network Info

--Storage Info

**Network**

--Ethernet

--2G/3G

--DNS

--DDNS

--DHCP Server

--Routing

--Port Mapping

--Diagnostic

**Process**

--System

--User

**System**

--Password

**Reboot**

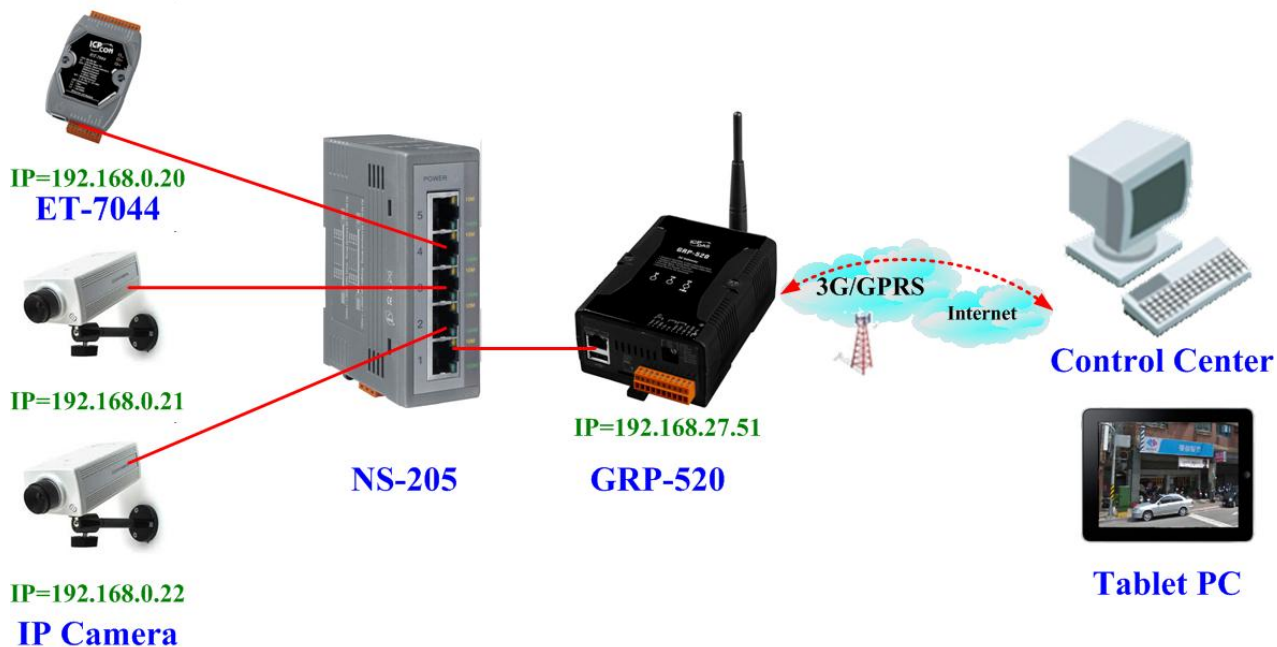
--Backup/Restore

**Notice!!**

Are you sure to reboot? please wait a minute for system rebooting after you press reboot button.

## 4.2 Web Server and IP Camera Application

This example shows the steps to share 3G network to ET-7044 and IP camera.



- (1) Please Set the Ethernet of ET-7044 and IP camera as:

IP=192.168.0.20 ~ 22

Mask="255.255.0.0"

gateway = "192.168.27.51"

- (2) Set the IP of GRP-520 as below:

IP="192.168.27.51"

Mask="255.255.0.0"


<b>Information</b>	
<a href="#">--Device Info</a>	
<a href="#">--Network Info</a>	
<a href="#">--Storage Info</a>	
<b>Network</b>	
<a href="#">--Ethernet</a>	
<a href="#">--2G/3G</a>	
<a href="#">--DNS</a>	
<a href="#">--DDNS</a>	
<a href="#">--DHCP Server</a>	
<a href="#">--Routing</a>	
<a href="#">--Port Mapping</a>	

Ethernet	
Mode	Static <input type="button" value="v"/>
IP Address	<input type="text" value="192.168.27.51"/>
Mask	<input type="text" value="255.255.0.0"/>
Gateway	<input type="text"/>
<input type="button" value="Modify"/>	

- (3) Set Pin code of your SIM card, and Enable “Auto-Dialing” function.

Set “User Name” and “Password” if your SIM card need it.


Press “Modify”

<b>Information</b> <a href="#">--Device Info</a> <a href="#">--Network Info</a> <a href="#">--Storage Info</a> <b>Network</b> <a href="#">--Ethernet</a> <a href="#">--2G/3G</a> <a href="#">--3G/GPRS</a> <a href="#">Reconnection</a> <a href="#">--DNS</a> <a href="#">--DDNS</a> <a href="#">--DHCP Server</a> <a href="#">--Routing</a> <a href="#">--Port Mapping</a> <a href="#">--Diagnostic</a> <b>System</b> <a href="#">--Password</a> <a href="#">--Reboot</a> <a href="#">--Reboot Timer</a> <a href="#">--Backup/Restore</a>		<table border="1"> <thead> <tr> <th colspan="2">2G/3G Configure</th> </tr> </thead> <tbody> <tr> <td>PIN Code</td> <td>....</td> </tr> <tr> <td>Phone Number</td> <td>*99***1# (1)</td> </tr> <tr> <td>APN</td> <td>internet (2)</td> </tr> <tr> <td>User Name</td> <td>(2)</td> </tr> <tr> <td>Password</td> <td>(2)</td> </tr> <tr> <td>Auto-Dialing</td> <td><input type="checkbox"/> Enable</td> </tr> <tr> <td colspan="2" style="text-align: right;">Modify</td> </tr> <tr> <td colspan="2">           (1):usually use *99# or *99***1#            (2):please ask your SIM Card provider         </td> </tr> </tbody> </table>	2G/3G Configure		PIN Code	....	Phone Number	*99***1# (1)	APN	internet (2)	User Name	(2)	Password	(2)	Auto-Dialing	<input type="checkbox"/> Enable	Modify		(1):usually use *99# or *99***1# (2):please ask your SIM Card provider	
2G/3G Configure																				
PIN Code	....																			
Phone Number	*99***1# (1)																			
APN	internet (2)																			
User Name	(2)																			
Password	(2)																			
Auto-Dialing	<input type="checkbox"/> Enable																			
Modify																				
(1):usually use *99# or *99***1# (2):please ask your SIM Card provider																				

- (4) Enable “3G/GPRS Reconnection” function to keep your 3G/GPRS network always online (usually, ISP will disconnect your connection once every 1~3 days).

Generally, you can set the Server IP as your server’s IP or google’s DNS server IP (8.8.8.8). If you use MDVPN, please set the Server IP as your Server IP that doesn’t deny ICMP service (Ping).

Press “Modify” after you finish all settings.

<a href="#">--Network Info</a> <a href="#">--Storage Info</a> <b>Network</b> <a href="#">--Ethernet</a> <a href="#">--2G/3G</a> <a href="#">--3G/GPRS</a> <a href="#">Reconnection</a> <a href="#">--DNS</a> <a href="#">--DDNS</a> <a href="#">--DHCP Server</a> <a href="#">--Routing</a> <a href="#">--Port Mapping</a> <a href="#">--Diagnostic</a> <b>System</b> <a href="#">--Password</a> <a href="#">--Reboot</a> <a href="#">--Reboot Timer</a> <a href="#">--Backup/Restore</a>		<table border="1"> <thead> <tr> <th colspan="2">3G/GPRS Reconnection</th> </tr> </thead> <tbody> <tr> <td>Server IP</td> <td>8.8.8.8</td> </tr> <tr> <td>Max. Retry</td> <td>10</td> </tr> <tr> <td>Interval Time</td> <td>30</td> </tr> <tr> <td>Timeout</td> <td>50</td> </tr> <tr> <td>Enable Function</td> <td><input checked="" type="checkbox"/> Enable</td> </tr> <tr> <td>Alive</td> <td>True</td> </tr> <tr> <td>Firmware Version</td> <td>v1.1.1 2014/01/13</td> </tr> <tr> <td colspan="2" style="text-align: right;">Modify</td> </tr> <tr> <td colspan="2">           (1):This function will run immediately after you press "Modify" button            (2):GSM module will be reset after Max. retry            (3):System will reboot after GSM module reset 100 times         </td> </tr> </tbody> </table>	3G/GPRS Reconnection		Server IP	8.8.8.8	Max. Retry	10	Interval Time	30	Timeout	50	Enable Function	<input checked="" type="checkbox"/> Enable	Alive	True	Firmware Version	v1.1.1 2014/01/13	Modify		(1):This function will run immediately after you press "Modify" button (2):GSM module will be reset after Max. retry (3):System will reboot after GSM module reset 100 times	
3G/GPRS Reconnection																						
Server IP	8.8.8.8																					
Max. Retry	10																					
Interval Time	30																					
Timeout	50																					
Enable Function	<input checked="" type="checkbox"/> Enable																					
Alive	True																					
Firmware Version	v1.1.1 2014/01/13																					
Modify																						
(1):This function will run immediately after you press "Modify" button (2):GSM module will be reset after Max. retry (3):System will reboot after GSM module reset 100 times																						

- (5) Set “DDNS” function. (Because the IP of 3G usually is not a fixed IP, we use DDNS to get a fixed domain name)

**Information**

- [Device Info](#)
- [Network Info](#)
- [Storage Info](#)

**Network**

- [Ethernet](#)
- [2G/3G](#)
- [DNS](#)
- DDNS**
- [DHCP Server](#)
- [Routing](#)
- [Port Mapping](#)
- [Diagnostic](#)

**Process**

DDNS Configure	
Server	default@no-ip.com
Domain	
Username	
Password	
Period	60 seconds
Enable	<input checked="" type="checkbox"/> Enable
<input type="button" value="Modify"/>	

- (6) Set “Port Mapping Rule” to let user access the device behind GRP-520 via the internet.  
 This setting will bind the port of 3G interface to “Target IP:Target Port”.  
 Port 12080 of 3G interface → 192.168.0.20:80  
 Port 12180 of 3G interface → 192.168.0.21:80  
 Port 12280 of 3G interface → 192.168.0.22:80

**Information**

- [Device Info](#)
- [Network Info](#)
- [Storage Info](#)

**Network**

- [Ethernet](#)
- [2G/3G](#)
- [DNS](#)
- [DDNS](#)
- [DHCP Server](#)
- [Routing](#)
- Port Mapping**
- [Diagnostic](#)

**Process**

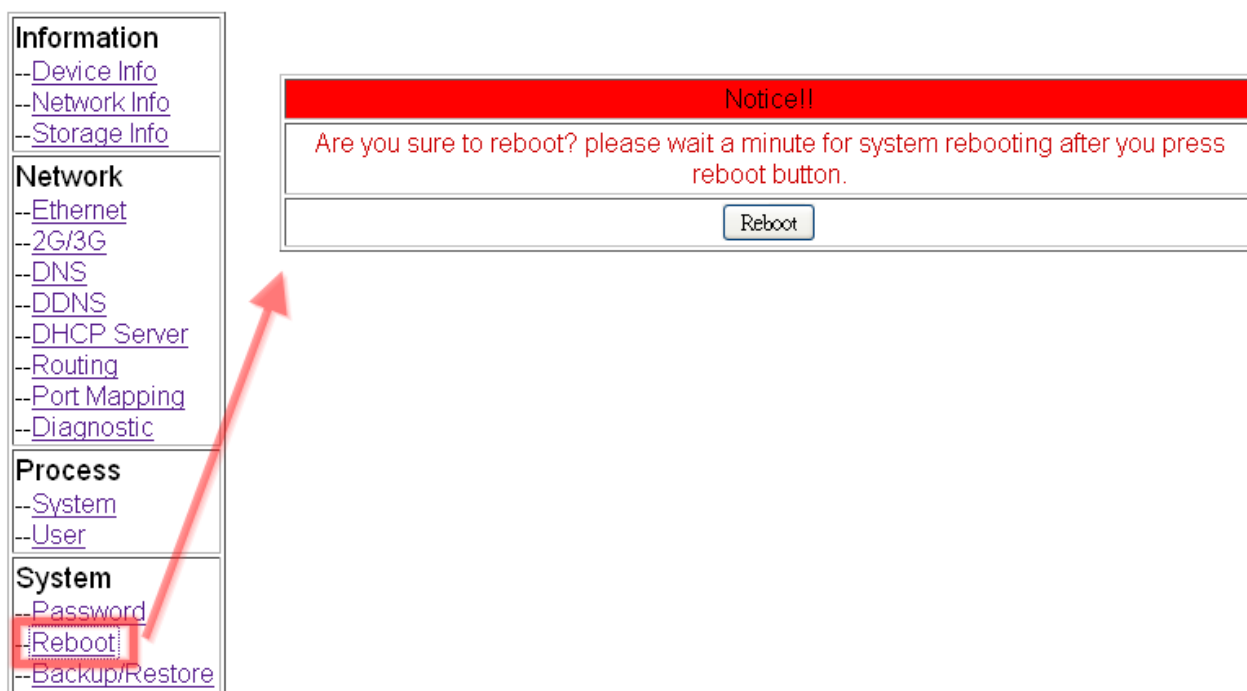
- [System](#)
- [User](#)

**System**

- [Password](#)
- [Reboot](#)
- [Backup/Restore](#)
- [Restore Factory](#)

Port Mapping Rule					
Rule NO.	Type	From	Port	Target IP	Target Port
0	TCP	ppp0	12080	192.168.0.20	80
1	TCP	ppp0	12180	192.168.0.21	80
2	TCP	ppp0	12280	192.168.0.22	80
3					
4					
5					
6					
7					
8					
9					
<input type="button" value="Modify"/>					

- (7) Please reboot GRP-520 to enable settings. (you can reboot from the web or the power source)



- (8) Please type the IP address or domain name of GRP-520 in 3G network. You will look as below. (It maybe like “mygrp5k.no-ip.org:12080”.)

← → ↻ 🏠 🔑 mygrp5k.no-ip.org:12080 🔍 Google

# ICP DAS

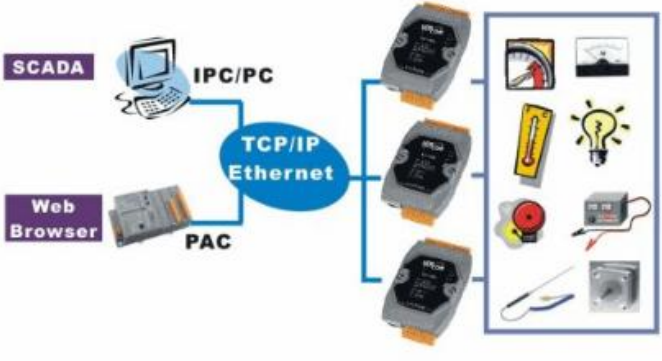
<http://www.icpdas.com>

Main Menu

- Overview
- Configuration
  - Network Settings
  - Basic Settings
  - Module I/O Settings
- Authentication
  - Account Management
  - Accessible IP Settings
- Web HMI
  - Web HMI
  - Web Edit
- Pair Connection
- More Information

**Welcome to the ET-7000 Web configuration page**

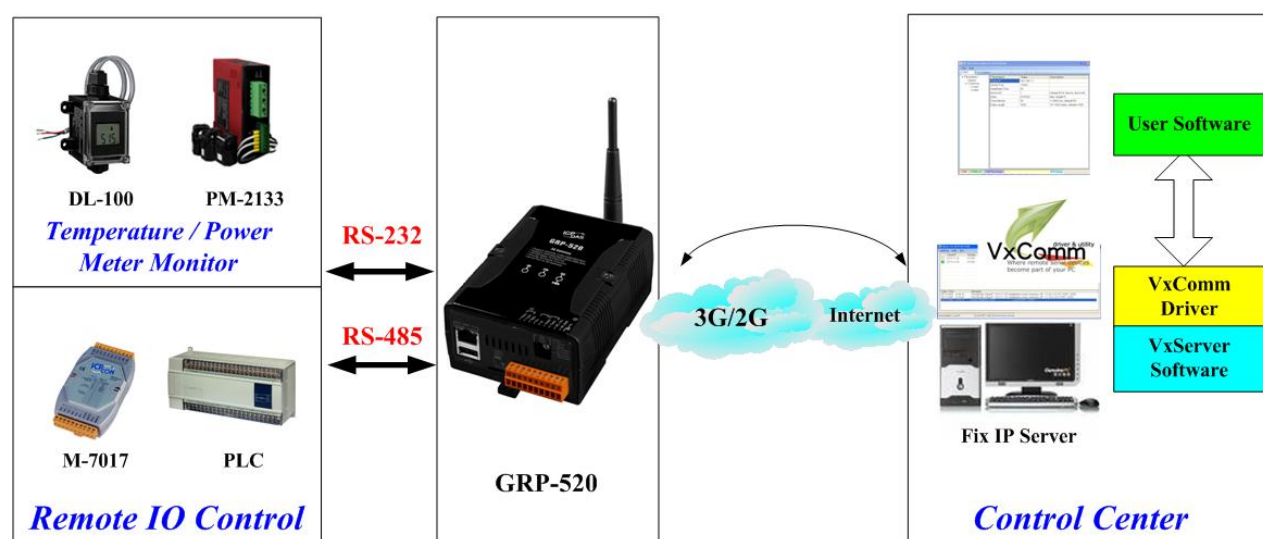
Model Name	ET-7044
MAC Address	00:0d:e0:64:44:8c
Module Information	
Firmware Version	1.3.0 (Mar 26 2012)
IO Version	1.09
OS Version	2.2.10 (Jun 4 2009)
DI channels	8
DO channels	8
AI channels	0
AO channels	0



- (9) If you want to see the IP Camera image from web browser, please type the IP address or domain name of GRP-520 in 3G network. (It maybe like “mygrp5k.no-ip.org:12180”.)

### 4.3 Remote I/O Control / Temperature Monitor

This example shows remote control application via “serial port to 3G gateway function”.



- (1) Please connect your device (DL-100 or PLC) to serial port of GRP-520.:
- (2) If you never use VxServer, please refer the link as below:  
<http://m2m.icpdas.com/VxServer.html>  
 you need download VxServer software and VxComm software, and install it on your control center.
- (3) Set Pin code of your SIM card, and Enable “Auto-Dialing” function.  
 Set “User Name” and “Password” if your SIM card needs it.  
 Press “Modify”

<b>Information</b> <a href="#">--Device Info</a> <a href="#">--Network Info</a> <a href="#">--Storage Info</a> <b>Network</b> <a href="#">--Ethernet</a> <a href="#">--2G/3G</a> <a href="#">--3G/GPRS</a> <a href="#">Reconnection</a> <a href="#">--DNS</a> <a href="#">--DDNS</a> <a href="#">--DHCP Server</a> <a href="#">--Routing</a> <a href="#">--Port Mapping</a> <a href="#">--Diagnostic</a> <b>System</b> <a href="#">--Restart</a>	<b>2G/3G Configure</b>	
	PIN Code	....
	Phone Number	*99***1# (1)
	APN	internet (2)
	User Name	(2)
	Password	(2)
	Auto-Dialing	<input type="checkbox"/> Enable
	<b>Modify</b>	
	(1):usually use *99# or *99***1#	
	(2):please ask your SIM Card provider	

- (4) Enable “3G/GPRS Reconnection” function to keep your 3G/GPRS network always online (usually, ISP will disconnect your connection once every 1~3 days).

Generally, you can set the Server IP as your server’s IP or google’s DNS server IP (8.8.8.8). If you use MDVPN, please set the Server IP as your Server IP that doesn’t deny ICMP service (Ping).

Press “Modify” after you finish all settings.

3G/GPRS Reconnection	
Server IP	8.8.8.8
Max. Retry	10
Interval Time	30
Timeout	50
Enable Function	<input checked="" type="checkbox"/> Enable
Alive	True
Firmware Version	v1.1.1 2014/01/13
<input type="button" value="Modify"/>	
(1):This function will run immediately after you press "Modify" button (2):GSM module will be reset after Max. retry (3):System will reboot after GSM module reset 100 times	

- (5) Configure VxServer Function.

Set “Server IP” and “Server Port”, the default port number is “11000”.

Let other settings be default value.

Click “Enable Function” to enable VxServer function.

Press “Modify”, and GRP-520 will try to connect to server.

if “Alive” field is not “True”(Green color), it mean VxServer function fail. Please check your settings again.

Visual COM Configure (VxServer)		
Server IP	192.168.27.67	
Server Port	11000	default=11000
Heartbeat Time	20	10~65535 seconds
Device ID	1	1~255, unique ID for device
Alias	GRP-520	Max. Length = 8
Time Interval	50	1~5000 ms, default=50
Data Length	1000	10~1000 bytes, default=1000
Enable Function	<input checked="" type="checkbox"/> Enable	
Alive	True	
Firmware Version	V1.00 2013/03/19	
<input type="button" value="Modify"/>		
(1)Heartbeat Time: if this value is small, it is sensitive to detect network disconnected (2)Virtual IP: please set it different from other virtual COM device		

- (6) Please reset your device and un-plug your Ethernet from GRP-520, it will dial-up in 60 seconds, and then it will connect to your control center.

The screenshot shows the VxServer application window titled "VxServer Ver1.01 B1 2012/04/20". The menu bar includes Settings, Help, and Exit.

A green status icon is visible next to the first row of the main table.

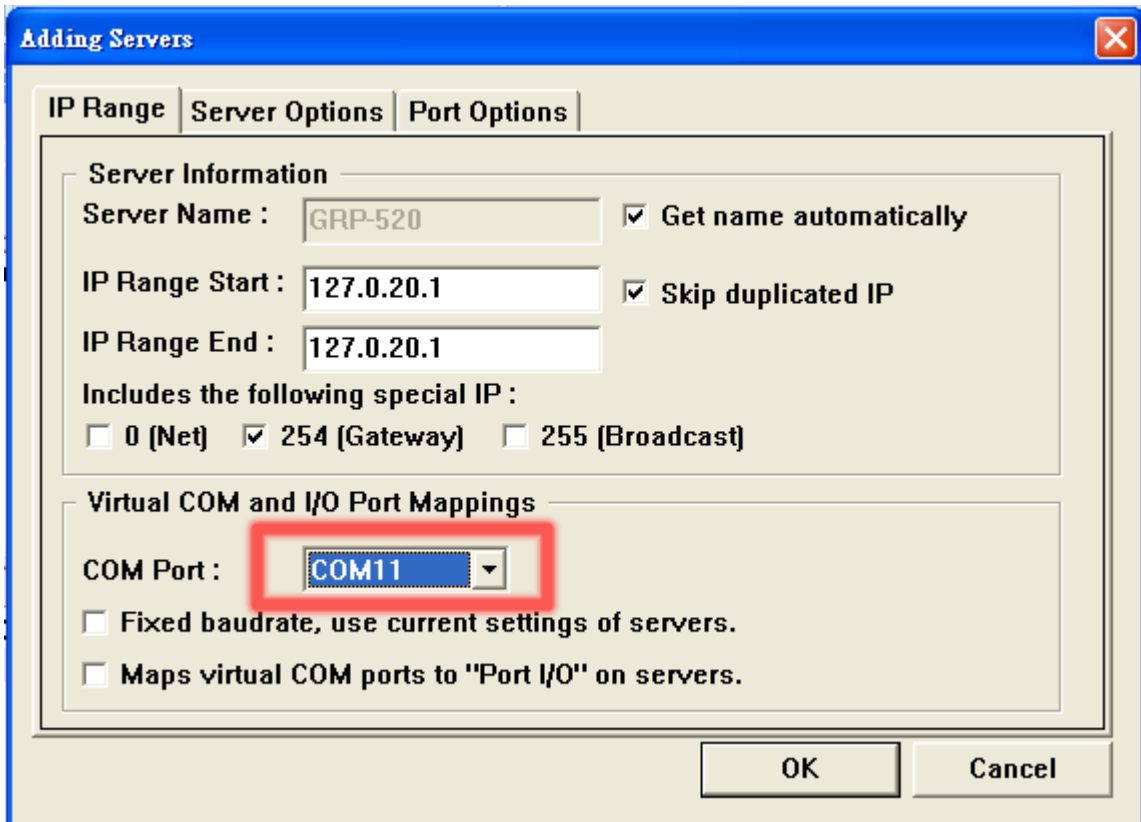
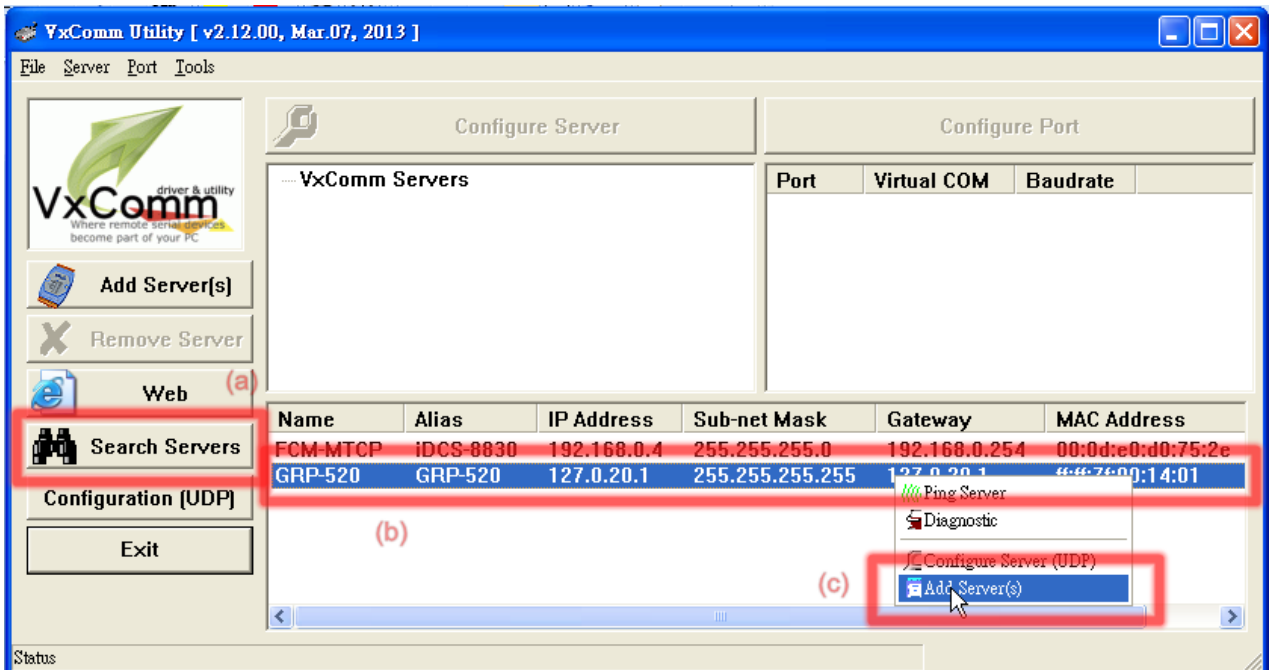
	Virtual IP	Module	Alias	Com Number	Heartbeat	Remote Client IP	Remote Client Port	Signal Quality
	127.0.20.1	GRP-520	GRP-520	2	20	111.80.236.252	59505	37%
Date / Time	Message							
2013/03/21 13:01:28	The Remote Virtua IP "127.0.20.1" establishes a new connection. (IP: 111.80.236.252, PORT: 59505)							
2013/03/21 13:01:06	Server Started(Local IP: 61.219.167.34, Local PORT: 11000)							

At the bottom, there are three status boxes:

- Server Started
- Local IP: 61.219.167.34    Local PORT: 11000
- VxComm Driver is running.

(7) After GRP-520 connect to VxServer, please follow steps below:

- (a) Press "Search Servers" button, you will get a device list.
- (b) Click right button of the mouse on GRP-520
- (c) Click "Add Server".
- (d) choose the virtual com port number, and click "OK"

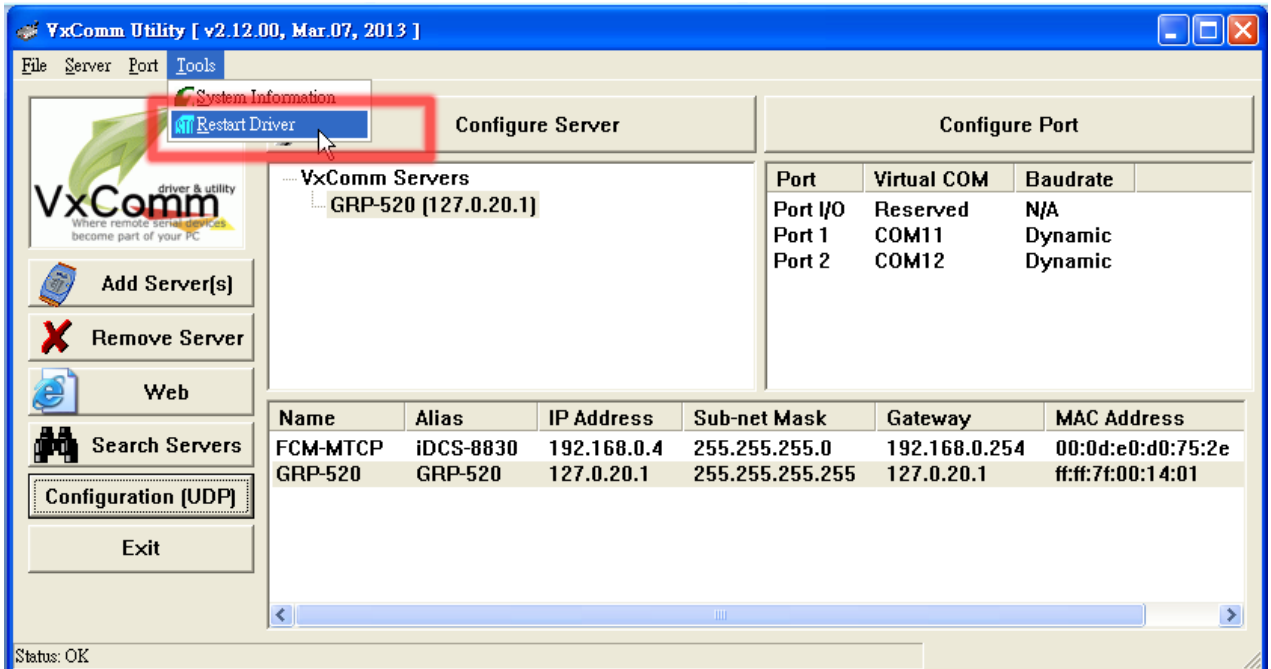


(8) You will see virtual com port: COM11, COM12, but it can't be opened.

Click "tool"/"Restart Driver" to restart VxComm driver.

Open com port to connect your device.

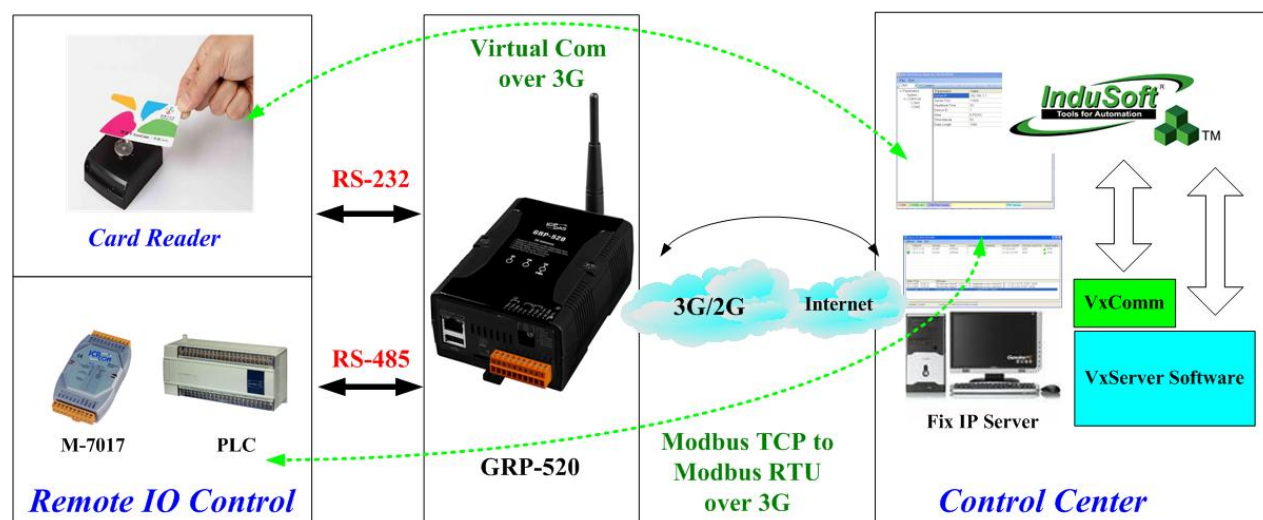
(In this case, COM11 is RS-485, COM12 is RS-232 of GRP-520.)



## 4.4 Modbus/TCP to Modbus/RTU over 3G, and Card Reader Monitor

This example shows Modbus/TCP to Modbus/RTU over 3G function”.

After steps below, please set “IP:Port” of Modbus/TCP program as “127.0.20.1:10001” on your control center (Port 10001 is RS485; Port 10002 is RS232)



- (1) Please connect your device (M-7017 or PLC) to RS-485 of GRP-520.

Baudrate of Modbus device is 9600 bps, data format is 8N1 (Data bits, Parity, Stop bits).

Baudrate of Card Reader is 115200 bps

- (2) If you never use VxServer, please refer the link as below:

<http://m2m.icpdas.com/VxServer.html>

you need download VxServer software and VxComm software, and install it on your control center.

- (3) Set Pin code of your SIM card, and Enable “Auto-Dialing” function.

Set “User Name” and “Password” if your SIM card needs it.

Press “Modify”

--Device Info --Network Info --Storage Info <b>Network</b> --Ethernet <b>2G/3G</b> --3G/GPRS Reconnection --DNS --DDNS --DHCP Server --Routing --Port Mapping --Diagnostic <b>System</b>	<table border="1"> <thead> <tr> <th colspan="2">2G/3G Configure</th> </tr> </thead> <tbody> <tr> <td>PIN Code</td> <td>....</td> </tr> <tr> <td>Phone Number</td> <td>*99***1# (1)</td> </tr> <tr> <td>APN</td> <td>internet (2)</td> </tr> <tr> <td>User Name</td> <td>(2)</td> </tr> <tr> <td>Password</td> <td>(2)</td> </tr> <tr> <td>Auto-Dialing</td> <td><input type="checkbox"/> Enable</td> </tr> <tr> <td colspan="2" style="text-align: center;">Modify</td> </tr> <tr> <td colspan="2">(1):usually use *99# or *99***1#</td> </tr> <tr> <td colspan="2">(2):please ask your SIM Card provider</td> </tr> </tbody> </table>	2G/3G Configure		PIN Code	....	Phone Number	*99***1# (1)	APN	internet (2)	User Name	(2)	Password	(2)	Auto-Dialing	<input type="checkbox"/> Enable	Modify		(1):usually use *99# or *99***1#		(2):please ask your SIM Card provider	
2G/3G Configure																					
PIN Code	....																				
Phone Number	*99***1# (1)																				
APN	internet (2)																				
User Name	(2)																				
Password	(2)																				
Auto-Dialing	<input type="checkbox"/> Enable																				
Modify																					
(1):usually use *99# or *99***1#																					
(2):please ask your SIM Card provider																					

- (4) Enable “3G/GPRS Reconnection” function to keep your 3G/GPRS network always online (usually, ISP will disconnect your connection once every 1~3 days).

Generally, you can set the Server IP as your server’s IP or google’s DNS server IP (8.8.8.8). If you use MDVPN, please set the Server IP as your Server IP that doesn’t deny ICMP service (Ping).

Press “Modify” after you finish all settings.

3G/GPRS Reconnection	
Server IP	8.8.8.8
Max. Retry	10
Interval Time	30
Timeout	50
Enable Function	<input checked="" type="checkbox"/> Enable
Alive	True
Firmware Version	v1.1.1 2014/01/13
<input type="button" value="Modify"/>	
(1):This function will run immediately after you press "Modify" button (2):GSM module will be reset after Max. retry (3):System will reboot after GSM module reset 100 times	

- (5) Configure VxServer Function.

Set “Server IP” and “Server Port”, the default port number is “11000”.

For Card Reader:

Please just set Port2 (RS-232) as default value.

For Modbus RTU device:

Please configure as below

Click “Enable Function” to enable VxServer function.

Press “Modify”, and GRP-520 will try to connect to server.

If “Alive” field is not “True”(Green color), it mean VxServer function fail. Please check your settings again.

--[Device Info](#)  
 --[Network Info](#)  
 --[Storage Info](#)

**Network**

--[Ethernet](#)  
 --[2G/3G](#)  
 --[3G/GPRS](#)  
[Reconnection](#)  
 --[DNS](#)  
 --[DDNS](#)  
 --[DHCP Server](#)  
 --[Routing](#)  
 --[Port Mapping](#)  
 --[Diagnostic](#)

**System**

--[Password](#)  
 --[Reboot](#)  
 --[Reboot Timer](#)  
 --[Backup/Restore](#)  
 --[Restore Factory](#)  
 --[Time](#)  
 --[System Service](#)

**VxServer**

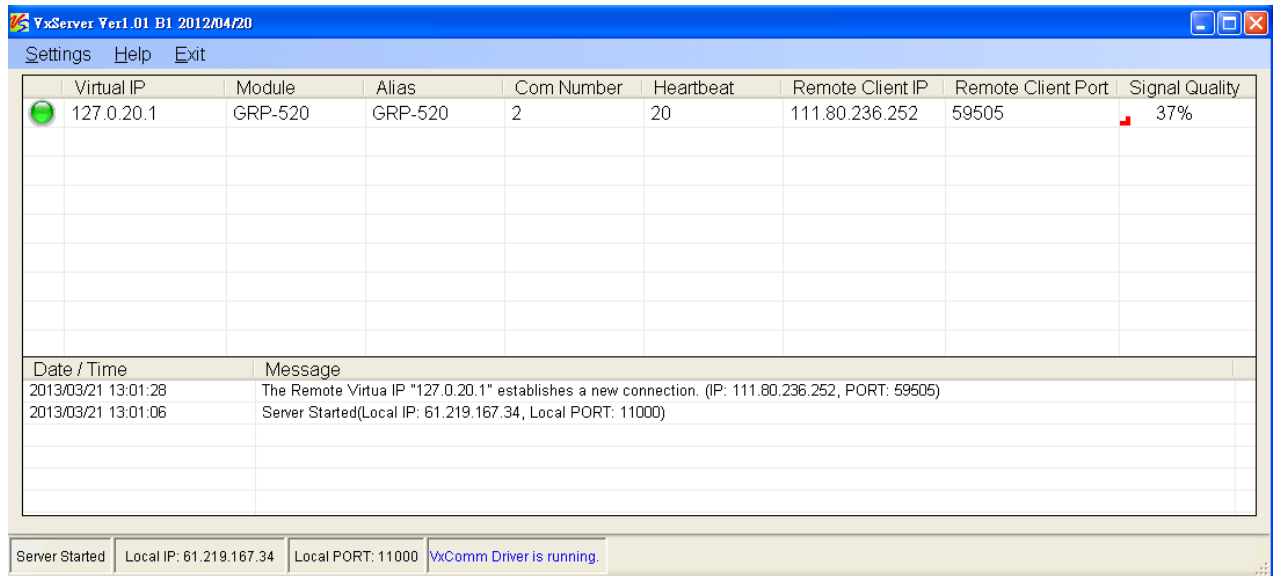
--[VxServer](#)

Web Ver: 1.1.0  
 2013/12/26

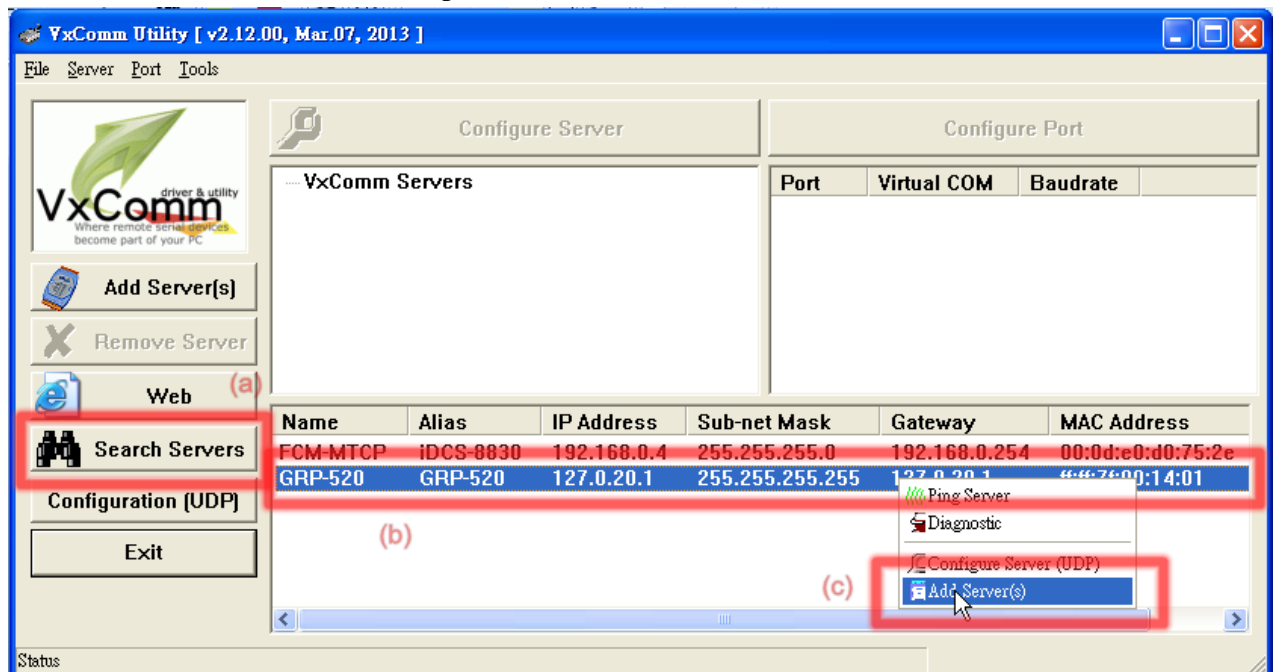
Virtual COM Function (VxServer)		
Server IP	<input type="text" value="192.168.27.67"/>	
Server Port	<input type="text" value="11000"/>	default=11000
Heartbeat Time	<input type="text" value="10"/>	10~65535 seconds
Device ID	<input type="text" value="1"/>	1~255, unique ID for device
Alias	<input type="text" value="GRP-520"/>	Max. Length = 8
Time Interval	<input type="text" value="50"/>	1~5000 ms, default=50
Data Length	<input type="text" value="1000"/>	10~1000 bytes, default=1000
Modbus TCP to RTU (Port1)	<input type="checkbox"/> True	COM2 of GRP-520 --> TCP Port 10001
Modbus TCP to RTU (Port2)	<input type="checkbox"/> False	COM3 of GRP-520 --> TCP Port 10002
Default Baudrate (Port1)	<input type="text" value="9600"/>	bps
Default Baudrate (Port2)	<input type="text" value="115200"/>	bps
Default Format (Port1)	<input type="text" value="8N1"/>	(Data bit, Parity, Stop bit)
Default Format (Port2)	<input type="text" value="8N1"/>	(Data bit, Parity, Stop bit)
Enable Function	<input checked="" type="checkbox"/> Enable	
Alive	True	
Firmware Version	V1.01 2014/01/29	
<input type="button" value="Modify"/>		

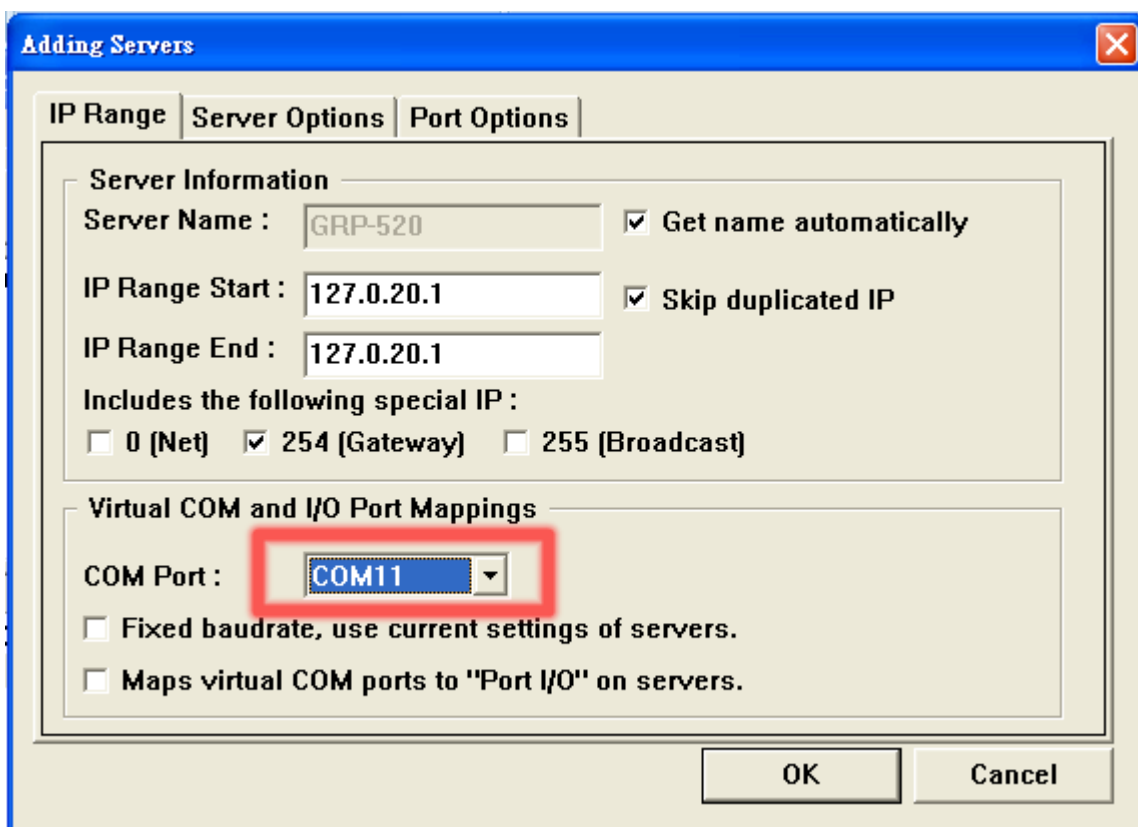
(1)Heartbeat Time: if this value is small, it is sensitive to detect network disconnected  
 (2)Virtual IP: please set it different from other virtual COM device

- (6) Please reset your device and un-plug your Ethernet from GRP-520, it will dial-up in 60 seconds, and then it will connect to your control center.



- (7) After GRP-520 connect to VxServer, please follow steps below:
- Press “Search Servers” button, you will get a device list.
  - Click right button of the mouse on GRP-520
  - Click “Add Server”.
  - choose the virtual com port number, and click “OK”



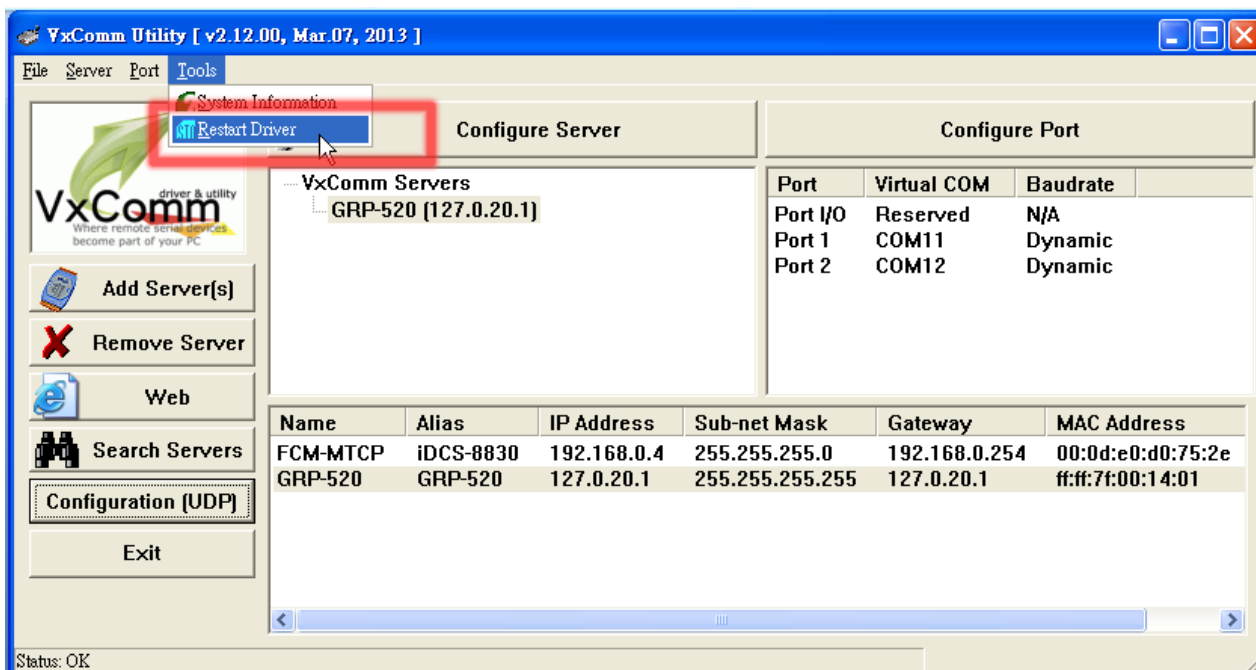


(8) You will see virtual com port: COM11, COM12, but it can't be opened.

Click "tool"/"Restart Driver" to restart VxComm driver.

Open com port to connect your device.

(In this case, COM11 is RS-485, COM12 is RS-232 of GRP-520. Please don't open COM11, because it's Modbus/TCP to Modbus/RTU mode)



## 4.5 RTU Client for Remote Control Application with RTU API.

This example shows how to use RTU API to collect and control remote Modbus/RTU and Modbus/TCP I/O with RTU Client / Server.

There are ET-7017, M-7045, and a PLC in this system.



(1) Please connect your device (ET-7k or M-7k modules) to Ethernet or RS-485 of GRP-520.:

(2) If you never use RTU Center, please refer the link as below:

[http://m2m.icpdas.com/m2m\\_rtu.html](http://m2m.icpdas.com/m2m_rtu.html)

If you need OPC solution, please refer the link as below:

[http://m2m.icpdas.com/NAPOPC\\_M2M.html](http://m2m.icpdas.com/NAPOPC_M2M.html)

If you need RTU library to develop your own software, please refer the link as below:

[http://m2m.icpdas.com/m2m\\_rtu\\_api.html](http://m2m.icpdas.com/m2m_rtu_api.html)

(3) Set Pin code of your SIM card, and Enable “Auto-Dialing” function.

Set “User Name” and “Password” if your SIM card needs it.

Press “Modify”

<a href="#">--Device Info</a> <a href="#">--Network Info</a> <a href="#">--Storage Info</a> <b>Network</b> <a href="#">--Ethernet</a> <a href="#">--2G/3G</a> <a href="#">--DNS</a> <a href="#">--DDNS</a> <a href="#">--DHCP Server</a> <a href="#">--Routing</a> <a href="#">--Port Mapping</a> <a href="#">--Diagnostic</a> <b>Process</b> <a href="#">--System</a> <a href="#">--User</a>	<div style="text-align: center; background-color: #f4a460; padding: 2px;"><b>2G/3G Configure</b></div> <table border="1" style="width: 100%;"> <tr> <td>PIN Code</td> <td>●●●●</td> <td></td> </tr> <tr> <td>Phone Number</td> <td>*99***1#</td> <td>(1)</td> </tr> <tr> <td>APN</td> <td>internet</td> <td>(2)</td> </tr> <tr> <td>User Name</td> <td></td> <td>(2)</td> </tr> <tr> <td>Password</td> <td></td> <td>(2)</td> </tr> <tr> <td>Auto-Dialing</td> <td><input checked="" type="checkbox"/> Enable</td> <td></td> </tr> </table> <div style="text-align: right; margin-top: 5px;"> <input type="button" value="Modify"/> </div> <p>(1):usually use *99# or *99***1#  (2):please ask your SIM Card provider</p>	PIN Code	●●●●		Phone Number	*99***1#	(1)	APN	internet	(2)	User Name		(2)	Password		(2)	Auto-Dialing	<input checked="" type="checkbox"/> Enable	
PIN Code	●●●●																		
Phone Number	*99***1#	(1)																	
APN	internet	(2)																	
User Name		(2)																	
Password		(2)																	
Auto-Dialing	<input checked="" type="checkbox"/> Enable																		

- (4) Enable “3G/GPRS Reconnection” function to keep your 3G/GPRS network always online (usually, ISP will disconnect your connection once every 1~3 days).

Generally, you can set the Server IP as your server’s IP or google’s DNS server IP (8.8.8.8). If you use MDVPN, please set the Server IP as your Server IP that doesn’t deny ICMP service (Ping).

Press “Modify” after you finish all settings.

<a href="#">--Network Info</a> <a href="#">--Storage Info</a> <b>Network</b> <a href="#">--Ethernet</a> <a href="#">--2G/3G</a> <a href="#">--3G/GPRS Reconnection</a> <a href="#">--DNS</a> <a href="#">--DDNS</a> <a href="#">--DHCP Server</a> <a href="#">--Routing</a> <a href="#">--Port Mapping</a> <a href="#">--Diagnostic</a> <b>System</b> <a href="#">--Password</a> <a href="#">--Reboot</a> <a href="#">--Reboot Timer</a> <a href="#">--Device Info</a>	<div style="text-align: center; background-color: #f4a460; padding: 2px;"><b>3G/GPRS Reconnection</b></div> <table border="1" style="width: 100%;"> <tr> <td>Server IP</td> <td>8.8.8.8</td> </tr> <tr> <td>Max. Retry</td> <td>10</td> </tr> <tr> <td>Interval Time</td> <td>30</td> </tr> <tr> <td>Timeout</td> <td>50</td> </tr> <tr> <td>Enable Function</td> <td><input checked="" type="checkbox"/> Enable</td> </tr> <tr> <td>Alive</td> <td style="background-color: #00ff00;">True</td> </tr> <tr> <td>Firmware Version</td> <td>v1.1.1 2014/01/13</td> </tr> </table> <div style="text-align: right; margin-top: 5px;"> <input type="button" value="Modify"/> </div> <p>(1):This function will run immediately after you press "Modify" button  (2):GSM module will be reset after Max. retry  (3):System will reboot after GSM module reset 100 times</p>	Server IP	8.8.8.8	Max. Retry	10	Interval Time	30	Timeout	50	Enable Function	<input checked="" type="checkbox"/> Enable	Alive	True	Firmware Version	v1.1.1 2014/01/13
Server IP	8.8.8.8														
Max. Retry	10														
Interval Time	30														
Timeout	50														
Enable Function	<input checked="" type="checkbox"/> Enable														
Alive	True														
Firmware Version	v1.1.1 2014/01/13														

(5) Add ET-7017 in “Modbus Device” tab.

choose ET-7017 in the list, and then press “Add” button.

Main Info.	Modbus Device	Email/FTP
Modbus Device Number : 0	<input type="button" value="Add"/> <div> ET-7050  ET-7042  ET-7044  ET-7050  ET-7051 </div>	

(6) The web will bring out all I/O number information as below. Please modify “Device Name”, “Device ID”, “IP” and “Port” for your ET-7017.

(Device Name: an alias name of your device, you can modify as you need.)

Press “Modify” to add a device.

Main Info.	Modbus Device	Email/FTP
Modbus Device Number : 0	<input type="button" value="Add"/> ET-7050	
1	Name :	<input type="button" value="Edit"/> <input type="button" value="Delete"/>
Device Name	ET-7050	Max Length=20
Device ID	1	1~255
IP	192.168.11.25	empty for Modbus/RTU
Port	502	Default=502, 1~65535
DI Number	12	0~32
DO Number	6	0~32
AI Number	0	0~16
AO Number	0	0~16
DI Address	0	0~65535
DO Address	0	0~65535
AI Address	0	0~65535
AO Address	0	0~65535
<input type="button" value="Modify"/> <input type="button" value="Cancel"/>		

## (7) Add M-7022 in “Modbus Device” tab.

choose M-7022 in the list, and then press “Add” button. We will see the screenshot as below.

The web will bring out all I/O number information. Please modify “Device Name” and “Device ID” for your M-7022. (Don’t modify “IP” and “Port” settings).

Press “Modify” to add a device.

Main Info.		Modbus Device		Email/FTP																																					
Modbus Device Number : 1			<input type="button" value="Add"/> M-7022 ▼																																						
1	Name : ET-7050		<input type="button" value="Edit"/> <input type="button" value="Delete"/>																																						
2	Name :		<input type="button" value="Edit"/> <input type="button" value="Delete"/>																																						
<table border="1"> <tr> <td>Device Name</td> <td>M-7022</td> <td>Max Length=20</td> </tr> <tr> <td>Device ID</td> <td>2</td> <td>1~255</td> </tr> <tr> <td>IP</td> <td></td> <td>empty for Modbus/RTU</td> </tr> <tr> <td>Port</td> <td>502</td> <td>Default=502, 1~65535</td> </tr> <tr> <td>DI Number</td> <td>0</td> <td>0~32</td> </tr> <tr> <td>DO Number</td> <td>0</td> <td>0~32</td> </tr> <tr> <td>AI Number</td> <td>0</td> <td>0~16</td> </tr> <tr> <td>AO Number</td> <td>2</td> <td>0~16</td> </tr> <tr> <td>DI Address</td> <td>0</td> <td>0~65535</td> </tr> <tr> <td>DO Address</td> <td>0</td> <td>0~65535</td> </tr> <tr> <td>AI Address</td> <td>0</td> <td>0~65535</td> </tr> <tr> <td>AO Address</td> <td>0</td> <td>0~65535</td> </tr> </table>						Device Name	M-7022	Max Length=20	Device ID	2	1~255	IP		empty for Modbus/RTU	Port	502	Default=502, 1~65535	DI Number	0	0~32	DO Number	0	0~32	AI Number	0	0~16	AO Number	2	0~16	DI Address	0	0~65535	DO Address	0	0~65535	AI Address	0	0~65535	AO Address	0	0~65535
Device Name	M-7022	Max Length=20																																							
Device ID	2	1~255																																							
IP		empty for Modbus/RTU																																							
Port	502	Default=502, 1~65535																																							
DI Number	0	0~32																																							
DO Number	0	0~32																																							
AI Number	0	0~16																																							
AO Number	2	0~16																																							
DI Address	0	0~65535																																							
DO Address	0	0~65535																																							
AI Address	0	0~65535																																							
AO Address	0	0~65535																																							
<input type="button" value="Modify"/> <input type="button" value="Cancel"/>																																									

## (8) Add PLC in “Modbus Device” tab. (communication with RS-485)

choose “Custom” in the list, and then press “Add” button. We will see the screenshot as below.

Here we set the “Device Name”, “Device ID”, “DI Number”, “AI Number” for the PLC.

Press “Modify” to add a device.

Main Info.		Modbus Device		Email/FTP																																					
Modbus Device Number : 2			<input type="button" value="Add"/> <input type="button" value="Custom"/>																																						
1	Name : ET-7050		<input type="button" value="Edit"/> <input type="button" value="Delete"/>																																						
2	Name : M-7022		<input type="button" value="Edit"/> <input type="button" value="Delete"/>																																						
3	Name :		<input type="button" value="Edit"/> <input type="button" value="Delete"/>																																						
<table border="1"> <tr> <td>Device Name</td> <td>myPLC</td> <td>Max Length=20</td> </tr> <tr> <td>Device ID</td> <td>1</td> <td>1~255</td> </tr> <tr> <td>IP</td> <td></td> <td>empty for Modbus/RTU</td> </tr> <tr> <td>Port</td> <td>502</td> <td>Default=502, 1~65535</td> </tr> <tr> <td>DI Number</td> <td>4</td> <td>0~32</td> </tr> <tr> <td>DO Number</td> <td>0</td> <td>0~32</td> </tr> <tr> <td>AI Number</td> <td>4</td> <td>0~16</td> </tr> <tr> <td>AO Number</td> <td>0</td> <td>0~16</td> </tr> <tr> <td>DI Address</td> <td>0</td> <td>0~65535</td> </tr> <tr> <td>DO Address</td> <td>0</td> <td>0~65535</td> </tr> <tr> <td>AI Address</td> <td>0</td> <td>0~65535</td> </tr> <tr> <td>AO Address</td> <td>0</td> <td>0~65535</td> </tr> </table>						Device Name	myPLC	Max Length=20	Device ID	1	1~255	IP		empty for Modbus/RTU	Port	502	Default=502, 1~65535	DI Number	4	0~32	DO Number	0	0~32	AI Number	4	0~16	AO Number	0	0~16	DI Address	0	0~65535	DO Address	0	0~65535	AI Address	0	0~65535	AO Address	0	0~65535
Device Name	myPLC	Max Length=20																																							
Device ID	1	1~255																																							
IP		empty for Modbus/RTU																																							
Port	502	Default=502, 1~65535																																							
DI Number	4	0~32																																							
DO Number	0	0~32																																							
AI Number	4	0~16																																							
AO Number	0	0~16																																							
DI Address	0	0~65535																																							
DO Address	0	0~65535																																							
AI Address	0	0~65535																																							
AO Address	0	0~65535																																							
<input type="button" value="Modify"/> <input type="button" value="Cancel"/>																																									

(9) Three devices we set as below:

Main Info.		Modbus Device	Email/FTP
Modbus Device Number : 3		Add Custom ▼	
1	Name : ET-7050	Edit Delete	
2	Name : M-7022	Edit Delete	
3	Name : myPLC	Edit Delete	

(10) Please choose “Modbus Test” function, and press “Test” button to test our settings.

If the result is successful, the screenshot will be as below, and please follow next step.

--Time  
--System Service  
VxServer  
--VxServer  
RTU Client  
--RTU Client  
--FTP Test  
--Email Test  
--Modbus Test  
V1.1.2 B07  
2014/07/28

success

Modbus Configure Test

Result

invalid object in data, converting to string  
invalid object in data, converting to string  
modbus debug start  
DEBUG [2014-08-18 15:55:56] [1] DI value= (0, 0, 0, 0, 0, 0, 0, 0, 0, 0, 0, 0)  
DEBUG [2014-08-18 15:55:56] [1] DO value= (0, 0, 0, 0, 0, 0)  
DEBUG [2014-08-18 15:55:56] [2] AO value= (291, 256)  
DEBUG [2014-08-18 15:55:56] [3] DI value= (1, 1, 0, 0)  
DEBUG [2014-08-18 15:55:56] [3] AI value= (0, 0, 0, 0)

Test

If result is fail, the screenshot will be as below. Please check your settings or the wire connection.

fails

Modbus Configure Test

Result

invalid object in data, converting to string  
invalid object in data, converting to string  
modbus debug start  
ERROR [2014-08-18 16:10:55] MB[1] poll\_modbus(): timed out  
DEBUG [2014-08-18 16:10:55] [2] AO value= (291, 256)  
DEBUG [2014-08-18 16:10:55] [3] DI value= (1, 1, 0, 0)  
DEBUG [2014-08-18 16:10:55] [3] AI value= (0, 0, 0, 0)  
[2014-08-18 16:10:54] modbus error  
[ET-7050,1] Exception: timed out

Test

## (11) Configure “Main Info.” Tab.

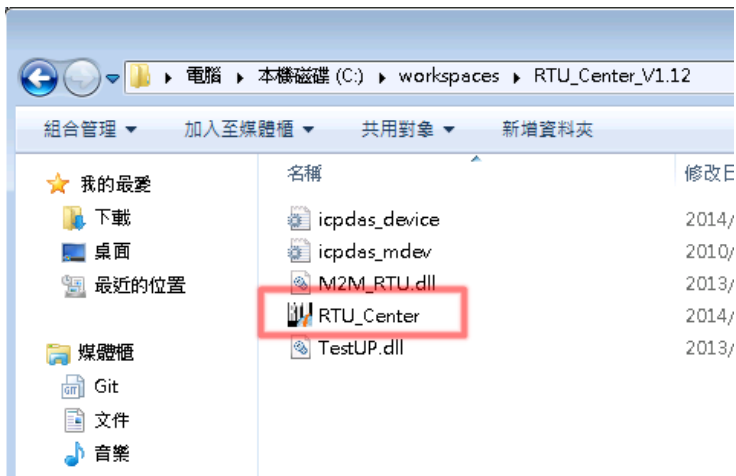
- Set “Server Address” and “Server Port” of your server that running RTU Center.
- Set Station ID of this GRP-520, and don’t be the same with another RTU device.
- Set “Data Update Period” and “Heartbeat Period”. (0 → disable)
- Configure the parameters of RS-485 for Modbus/RTU.

Main Info.	Modbus Device	FTP / Email
Server Address	<input type="text" value="192.168.1.100"/>	
Server Port	<input type="text" value="10000"/>	default=10000
Station ID	<input type="text" value="1"/>	1~65535
Data Update Period(sec.)	<input type="text" value="5"/>	0~86400 (0=disable)
Heartbeat Period(sec.)	<input type="text" value="0"/>	1~86400 (a day)
Baud Rate (RS-485 for Modbus/RTU)	<input type="text" value="9600"/> ▼ bps	
Data Bit	<input type="text" value="8"/> ▼	
Parity	<input type="text" value="N"/> ▼	
Stop Bit	<input type="text" value="1"/> ▼	
Modbus Timeout (ms)	<input type="text" value="1000"/>	50~99999, default=1000
Enable Firmware	<input checked="" type="checkbox"/> Enable	
Alive	True	
<input type="button" value="Modify"/>		

(12) Download RTU Center from:

[http://m2m.icpdas.com/m2m\\_rtu.html](http://m2m.icpdas.com/m2m_rtu.html)

and then extract “RTU Center”.



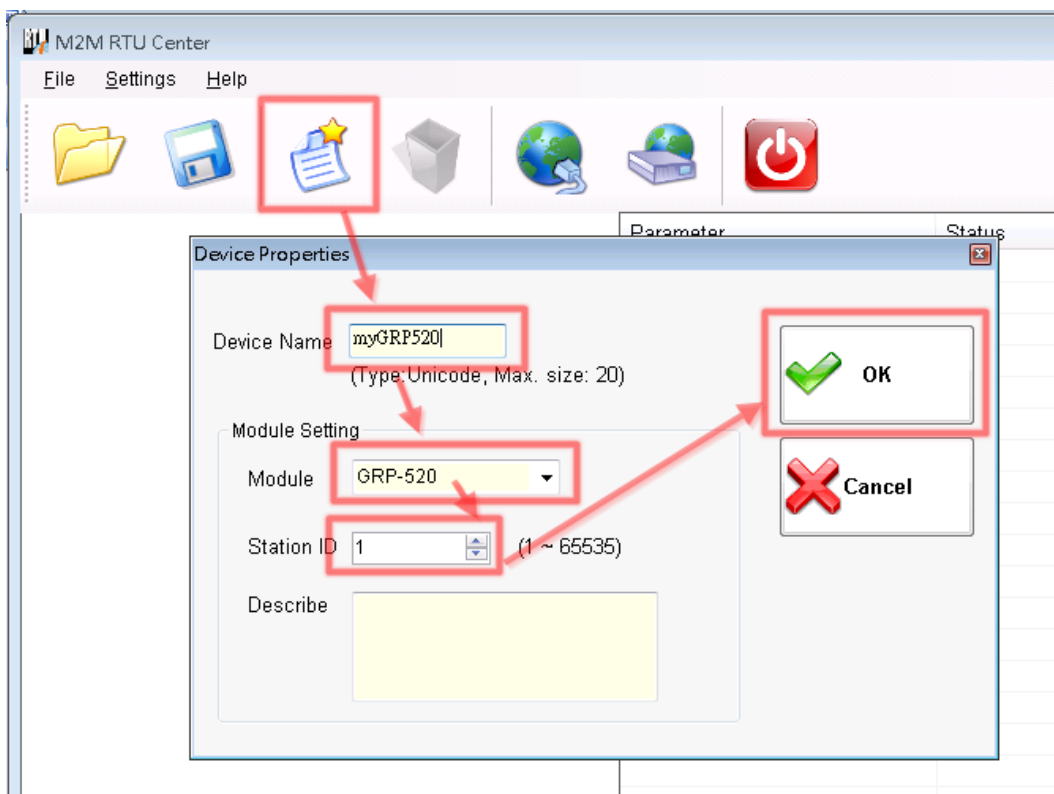
Or you can install NAPOPC.M2M DA Server, it contains RTU Center.

Please download install file from:

[http://m2m.icpdas.com/NAPOPC\\_M2M.html](http://m2m.icpdas.com/NAPOPC_M2M.html)

(13) Execute RTU Center, and add a RTU device in RTU Center.

- Click “New Device” icon.
- Input the alias name of your GRP-520
- Choose module type as “GRP-520”
- Set Station ID as “1”, and then press “OK” button.



(14) GRP-520 will connect to RTU Center later, and screenshot as below.

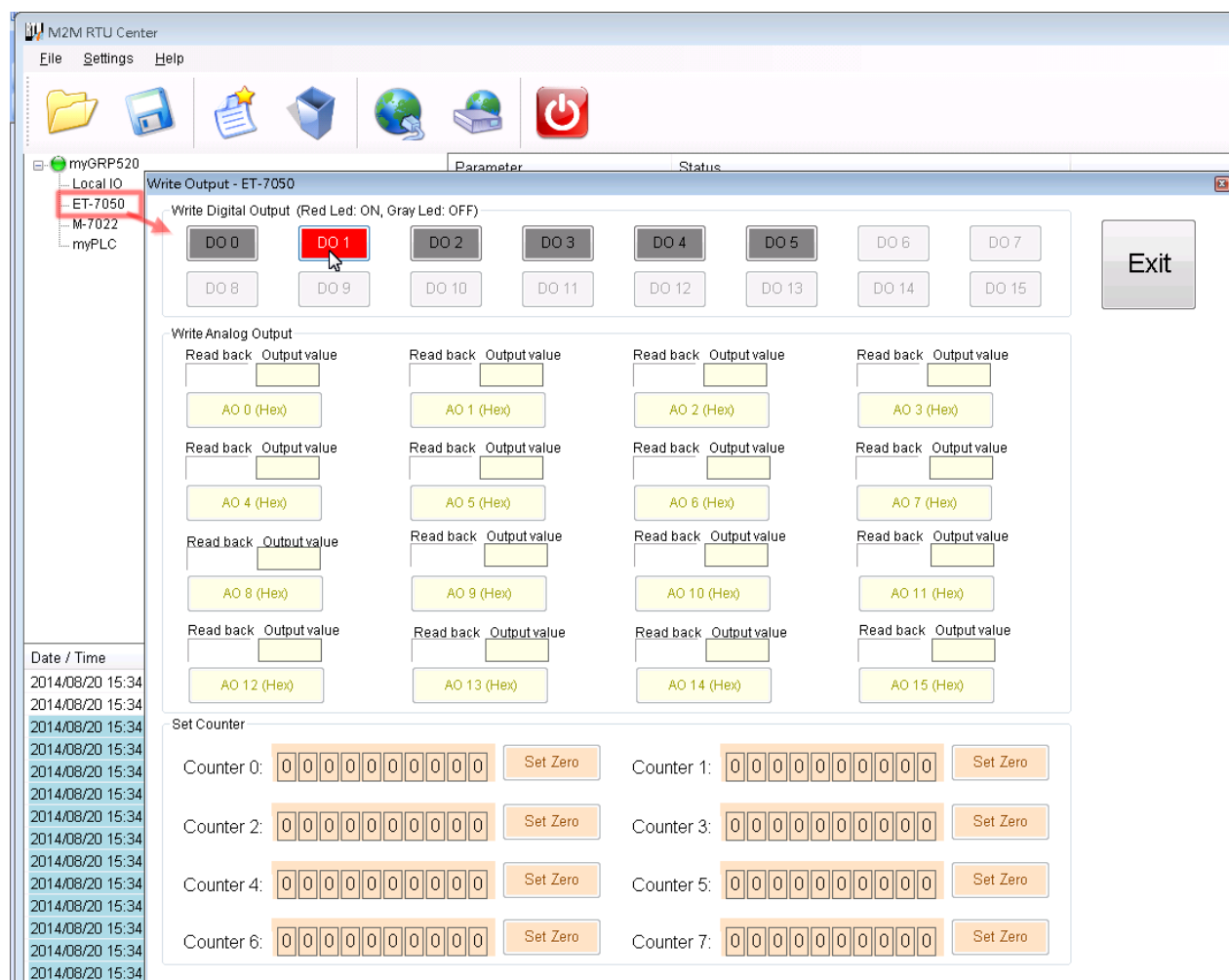
The screenshot shows the M2M RTU Center application window. The title bar reads 'M2M RTU Center'. The menu bar includes 'File', 'Settings', and 'Help'. Below the menu is a toolbar with icons for folders, a floppy disk, a document with a star, a folder, a globe, a server, and a power button. The main area is divided into three sections:

- Tree View (Left):** Shows a hierarchy starting with 'myGRP520' (highlighted), followed by 'Local IO', 'ET-7050', 'M-7022', and 'myPLC'.
- Parameter Table (Right):** A table with two columns: 'Parameter' and 'Status'.
 

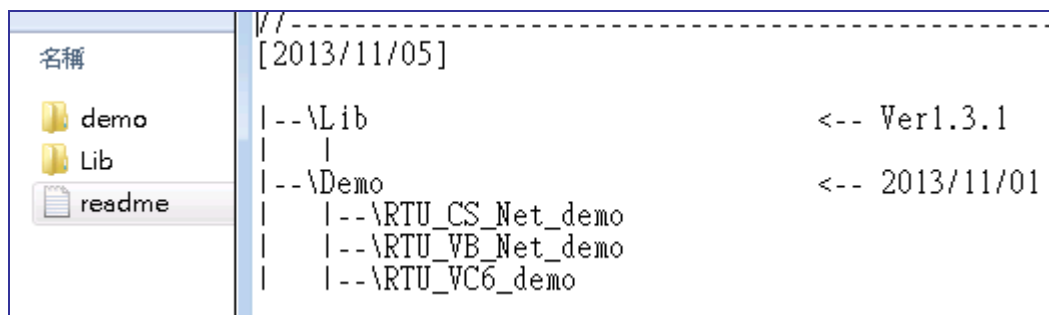
Parameter	Status
Device Name	myGRP520
Module	GRP-520
Station ID	1
Describe	
Connected Priority	GPRS Master, Ethernet Slave
Connected Method	Ethernet
Date&Time	2014/08/20 15:37:34
Remote Client IP	192.168.27.50
Remote Client PORT	44665
Send once time (unit: sec)	5
Heartbeat time (unit: sec)	0
Modbus module number	3
- Message Log (Bottom):** A table with two columns: 'Date / Time' and 'Message'.
 

Date / Time	Message
2014/08/20 15:34:23.297	Station [1] established the connection!!(Ethernet) (IP: 192.168.27.50, PORT: 44665)
2014/08/20 15:34:23.254	Add a new device "myGRP520" (Module Name=GRP-520, Station ID=1)

- (15) You can double click on “ET-7050” to bring out “Output control panel”, and press “DO1” to control remote DO.

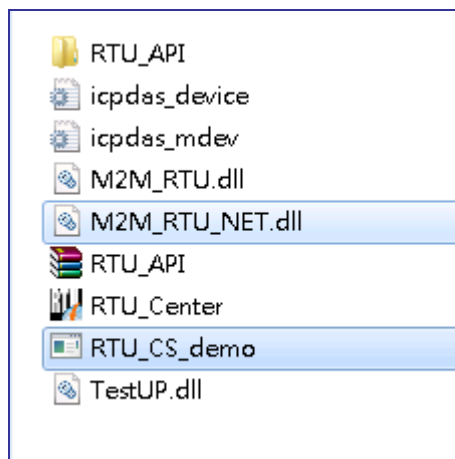
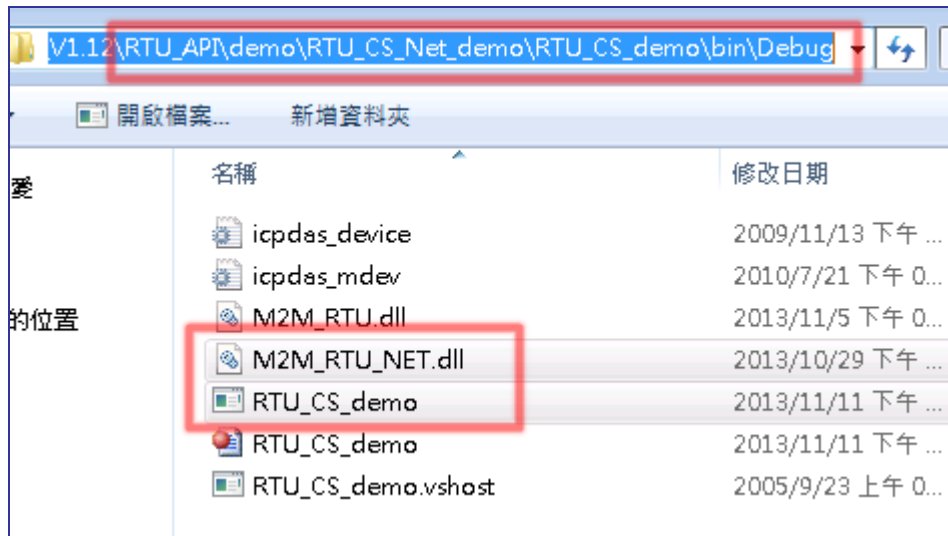


- (16) Download RTU API from RTU Center web page, and extract it. There are RTU API library and some demo for C#, VB.Net, VC6 as below.



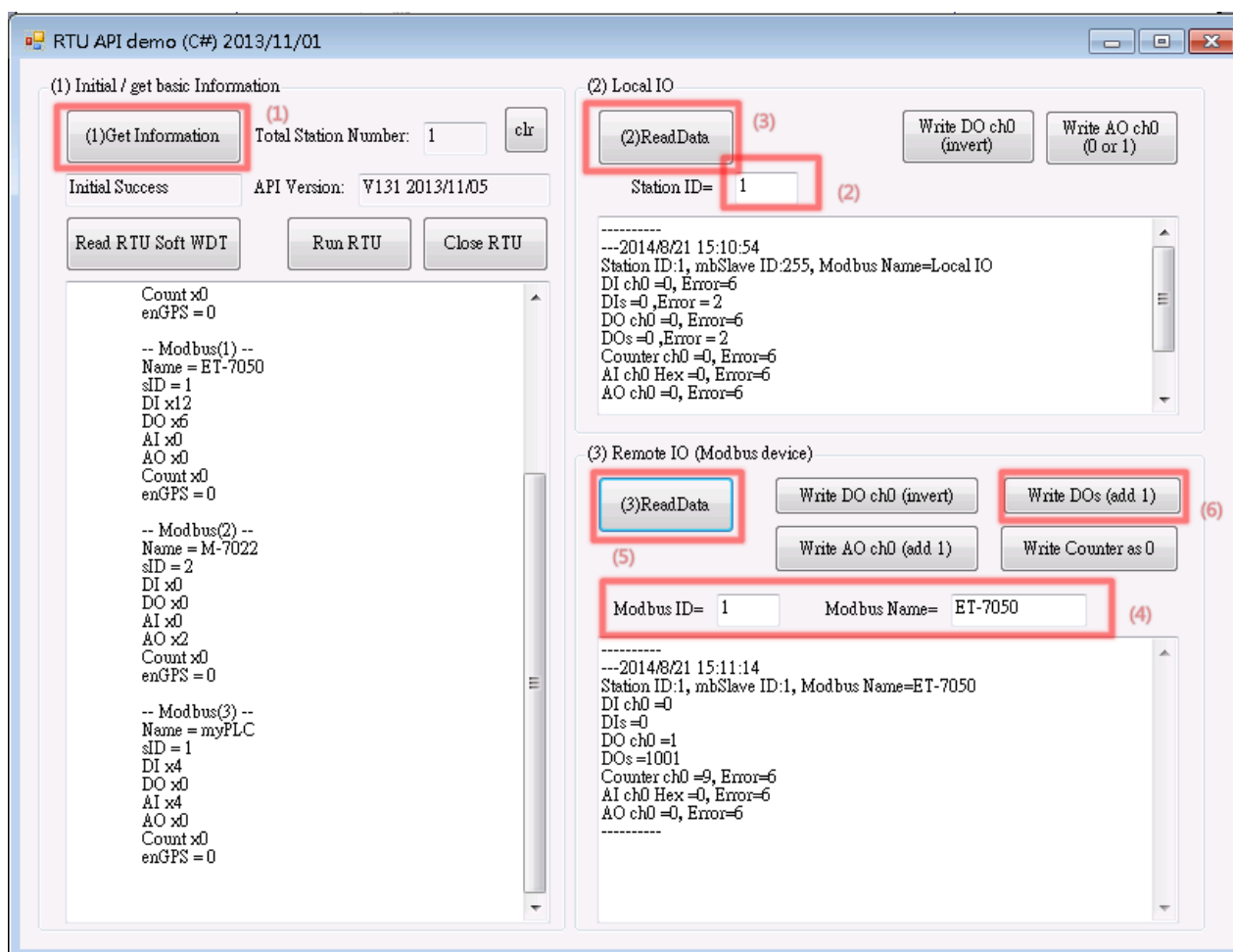
- (17) Copy pre-building demo into folder of RTU Center. (demo must be in the same folder with RTU Center, because they use the same share memory in M2M\_RTU.dll)

Here we copy two file “RTU\_CS\_demo.exe” and “M2M\_RTU\_NET.dll” from C# demo.



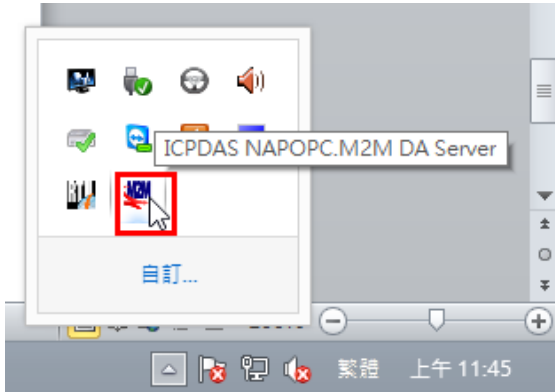
(18) Execute “RTU\_CS\_Demo.exe”.

- Press “Get Information” to get all stations information.
- Set “Station ID” as 1 (because we set Station ID as 1 in GRP-520)
- Press “(2)ReadData” button to read Local IO data. Because GRP-520 don’t have local IO, we get the error code here
- Set “Modbus ID” as 1 and “Modbus Name” as “ET-7050”, and press “(3)ReadData” to get all IO data.
- Press “Write Dos (add 1)” button to control DO.

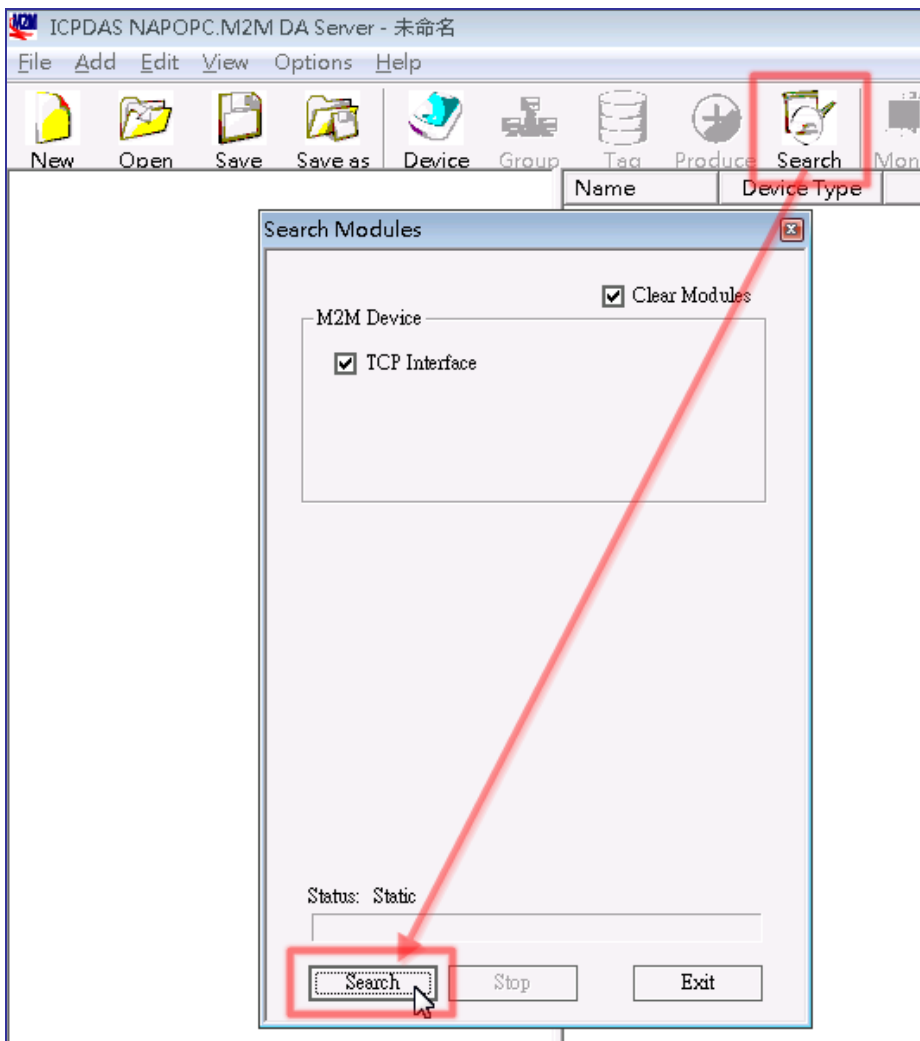


## 4.6 RTU Client for Remote Control Application with OPC DA Server.

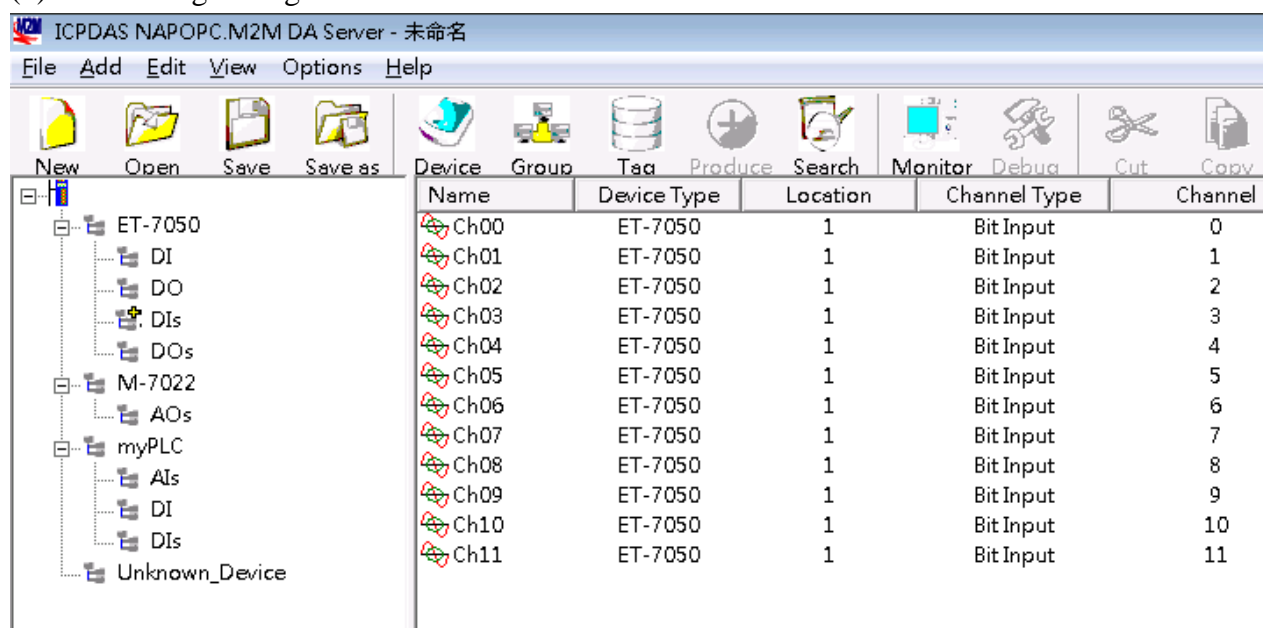
- (1) Please refer last section for setting of “RTU Client”, “RTU Center”.
- (2) After install “NAPOPC.M2M DA Server”, please click the icon to launch NAPOPC.M2M DA Server from right-bottom toolbar of desktop.



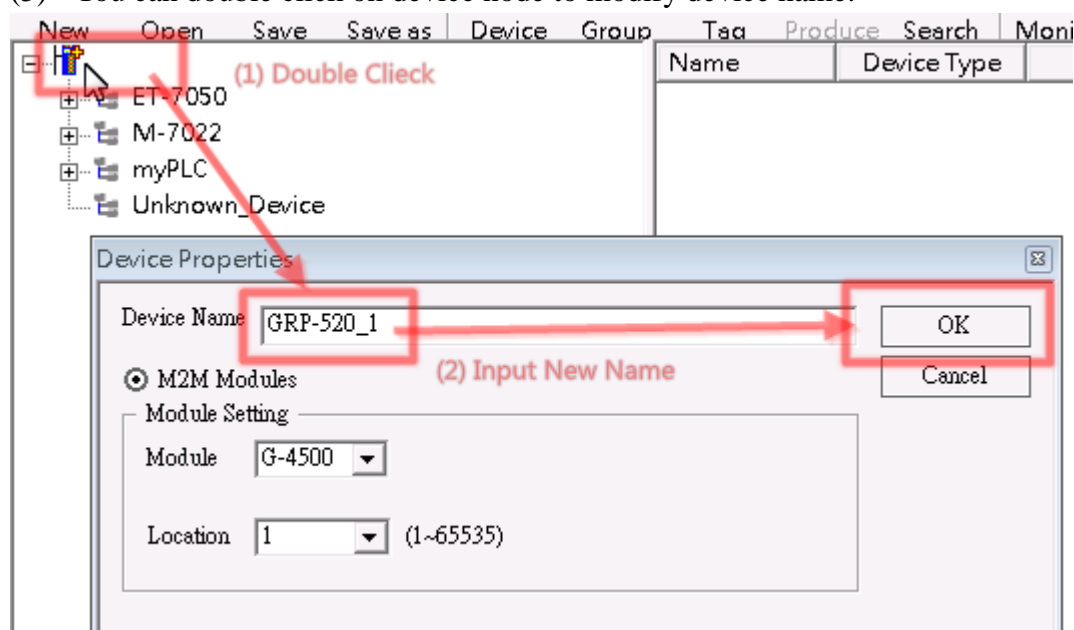
- (3) Click “Search” to add all tags of GRP-520 automatically.



(4) You will get a tag list as below.

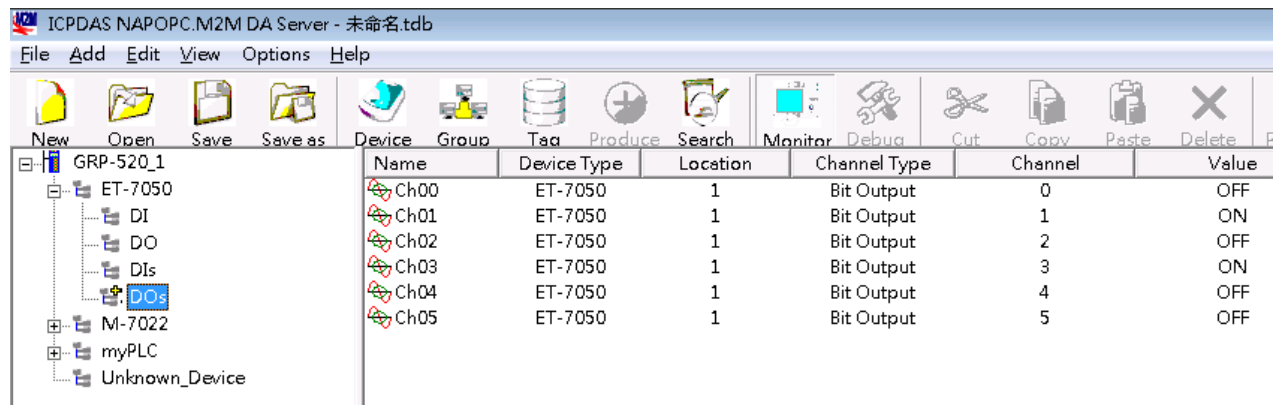


(5) You can double click on device node to modify device name.



(6) Now you can use OPC Client to read I/O data from NAPOPC.M2M DA Server.

Or you can client “Monitor” to monitor all I/O data.

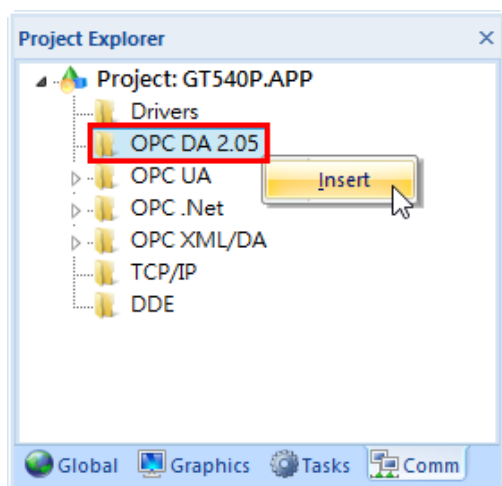


## 4.7 RTU Client for Remote Control Application with InduSoft.

This example shows how to using SCADA “InduSoft” to control/monitor remote I/O with GRP-520.




- (1) About RTU Client, RTU Center and OPC Server, please refer last section.
- (2) Right-click OPC DA 2.05 folder and insert a new worksheet.



- (3) Choice OPC Server from Server Identifier, and Select NAPOPC.M2M Item from combo box

OPCCL001.OPC x

Description:

Server Identifier:  

Disable:

Read Update Rate (ms):






Status:

Remote Server Name:

☐ Read before writing

☐ Read after writing

☒ Accept Tag Name in the Item column

Tag Name	Item	Scan	(Project Texts)	Add
 Filter text	 Filter text	 (All)	 Filter text	 Filter text
*		Always		
*		Always		
*		Always		
*		Always		
*		Always		

#### (4) Configure Tag Name and Item Column

- Fill in your tag.
- Double-click Item column and select the point from pop-up window.

OPCCL001.OPC x

Description:  Server Identifier:  Disable:

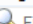
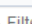
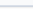
Read Update Rate (ms):  Percent Deadband:  Status:

Remote Server Name:

☐ Read before writing

☐ Read after writing

☒ Accept Tag Name in the Item column

Tag Name	Item	Scan
 Filter text	 Filter text	 (All)
1 DO[0]	GT-540_0.DOs.Ch00	Alway
2 DO[1]	GT-540_0.DOs.Ch01	Alway
3 DI[0]	GT-540_0.DIs.Ch00	Alway
4 DI[1]	GT-540_0.DIs.Ch01	Alway
5 DI[2]	GT-540_0.DIs.Ch02	Alway
6 DI[3]	GT-540_0.DIs.Ch03	Alway
7 DI[4]	GT-540_0.DIs.Ch04	Alway
8 DI[5]	GT-540_0.DIs.Ch05	Alway
9 AI		Alway
*		Alway
*		Alway
*		Alway
*		Alway
*		Alway
*		Alway

OPC Browser: 'NAPOPC.M2M' [LOCAL]

OK

Cancel

Filter:

☐ Read

☐ Write

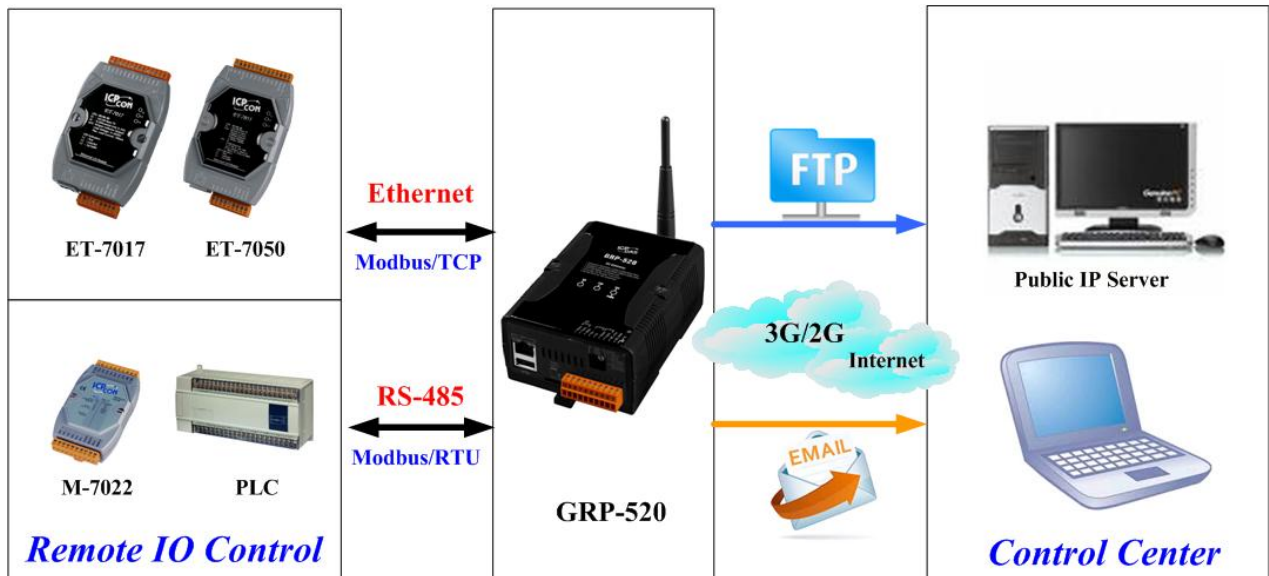
☒ Both

Refresh

GT-540\_0.AIs.Ch00

## 4.8 Email or FTP report I/O logger file.

This example shows how to using GRP-520 to report I/O logger file periodically.



- (1) About Modbus configure, please refer [section 4.5](#).
- (2) Configure Email / FTP function in “Email/FTP” Tab. **You must set “Data Log Interval” field more than 0, or log report function will be disabled.** (include FTP and Email)
  - Configure “Data Log Interval” to record IO data into csv file. (0 → disable)  
filename format: GRP-520\_StationID\_YYYYMMDD\_hhmmss.csv  
ex: GRP-520\_13\_20140806\_172347.csv
  - Configure “Max. Time per Log File” to indicate how long to change / send back log file. If the file size is close 3MB, GRP-520 will create a new log file to recode I/O data and move old log file into “/RTU/LOGFILE/” in SD card.
  - If you need FTP report function, please set all FTP parameters and set “Enable FTP Function” as “Enable”. GRP-520 will send log file to FTP Sever when new log file is available.
  - If you need Email report function, please set all Email parameters and set “Enable FTP Function” as “Enable”. **If you need 2 or more contact, please use comma “,” to separate each contact.**

Main Info.	Modbus Device	FTP / Email
Data Log Interval (sec.)	60	0~86400 (0=disable)
Max. Time per Log File (hour)	6	1~24 hour
FTP Server Address	192.168.1.1	empty --> disable FTP
FTP Port	21	default=21
FTP Username	test	
FTP Password	test	
Enable FTP Function	<input checked="" type="checkbox"/> Enable	
Email From	abc@gmail.com	empty --> disable Email Ex: abc@gmail.com
Email To	xyz@gmail.com	Ex: xyz@gmail.com
Example for 2 or more contact	xx@gmail.com,yy@gmail.com	
Email Server	smtp.gmail.com	Ex: smtp.gmail.com
Email Server Port	25	Ex: 25
Email Username	abc	Ex: abc
Email Password	123abc	Ex: 123abc
Enable Email Function	<input checked="" type="checkbox"/> Enable	
<input type="button" value="Modify"/>		

- (3) Finally, please don't forget enable firmware in "Main Info." Tab. If you don't need the firmware send data to RTU Center, you can set "Data Update Period" as 0.

Main Info.	Modbus Device	FTP / Email
Server Address	<input type="text" value="192.168.1.1"/>	
Server Port	<input type="text" value="10000"/>	default=10000
Station ID	<input type="text" value="1"/>	1~65535
Data Update Period(sec.)	<input type="text" value="0"/>	0~86400 (0=disable)
Heartbeat Period(sec.)	<input type="text" value="0"/>	1~86400 (a day)
<hr/>		
Baud Rate (RS-485 for Modbus/RTU)	<input type="text" value="9600"/> ▼ bps	
Data Bit	<input type="text" value="8"/> ▼	
Parity	<input type="text" value="N"/> ▼	
Stop Bit	<input type="text" value="1"/> ▼	
Modbus Timeout (ms)	<input type="text" value="1000"/>	50~99999, default=1000
<hr/>		
Enable Firmware	<input checked="" type="checkbox"/> Enable	
Alive	True	
<input type="button" value="Modify"/>		