

MONOPRICE®

Interactive Pen Display

(1440x900) TFT, 2048 Levels, 5080 LPI, 16.7mm Colors



Windows User's Manual

10707

CONTENTS

I. General Information	1
1. Safety Warnings and Guidelines	1
2. Package Contents	2
3. System Requirements	2
4. Technical Support.....	2
5. Controls	3
6. Connections.....	3
7. Adjustable Stand	3
8. Software Installation	4
9. Hardware Installation.....	6
10. Pen Operation	8
11. Usage Tips	9
II. Configuration	10
1. The Info Tab	10
2. The Monitor Setting Tab	11
3. The Button Tab.....	12
4. The Pressure Tab.....	13
5. The Calibration Tab	14
III. Pen Storage and Maintenance	15
1. Storing the Digital Pen.....	15
2. Replacing the Battery in the Digital Pen	15
3. Replacing the Pen Tip	16

I. General Information

1. Safety Warnings and Guidelines

For your safety and the continued operation of your equipment, please read and heed the following safety warnings and guidelines:

1. Do not expose this device to water or moisture of any kind. Do not place drinks or other containers with moisture on or near the device. If moisture does get in or on the device, immediately unplug it from the power outlet.
2. This device ventilates excessive heat through the slots and openings in the case. Do not block or cover these openings. Ensure that the device is in an open area where it can get sufficient airflow to keep from overheating.
3. Use only the AC adapter included with this device. If the AC adapter is lost or damaged, use only an exact replacement (12 VDC, 4A).
4. Do not modify the power cord or otherwise attempt to bypass the grounding by using a "cheater" plug. If your power outlet does not accommodate a three-prong NEMA 5-15 type plug, contact a professional electrician to replace the obsolete power outlet.
5. Remove power from the monitor when it will not be in use for some time. If it will not be used for a very long time, unplug all connections as well.
6. Take care not to allow any objects, particularly metallic or conductive objects, to fall into the monitor. If there is anything loose or rattling around inside the case, have the monitor serviced by qualified personnel to remove the foreign object(s).
7. This device has no user serviceable parts. Do not attempt to disassemble or modify this device in any way. Servicing should be conducted by qualified service personnel only.
8. Do not use water, solvents, or chemical cleaners on this device. Clean using a soft, dry cloth only.

2. Package Contents

Please take an inventory of the package contents to ensure you have all the items listed below. If anything is missing or damaged, please contact Monoprice Customer Service for a replacement.

- 1x Monitor
- 1x AC power adapter
- 1x AC power cord (NEMA 5-15 to IEC 60320 C13)
- 1x VGA cable
- 1x USB cable (A male to A male)
- 1x CD-ROM with drivers
- 1x Pen stylus
- 1x Pen charging cable
- 1x Pen holder
- 1x Pen tip removal tool
- 4x Spare pen tips

3. System Requirements

To properly use this pen monitor you will need the following:

- Windows XP or later (32- & 64-bit)
- Available VGA, DVI-A, or DVI-D video output
- Available USB port
- CD-ROM or internet connection for driver installation

4. Technical Support

Monoprice is pleased to provide free, live, online technical support to assist you with any questions you may have about installation, setup, troubleshooting, or product recommendations. If you ever need assistance with your new product, please come online to talk to one of our friendly and knowledgeable Tech Support Associates. Technical support is available through the online chat button on our website (www.monoprice.com) during regular business hours, 7 days a week. You can also get assistance through email by sending a message to tech@monoprice.com.

5. Controls

MENU: Press this button to access the monitor's internal On Screen Display (OSD) menu system. When the menu is displayed, the **MENU** button functions as a **Select** or **OK** button.

Minus (-): The Minus (-) button moves the menu cursor/highlight down one entry. If an entry has been selected for editing, the **Minus (-)** button decreases the selected value.

Plus (+): The Plus (+) button moves the menu cursor/highlight up one entry. If an entry has been selected for editing, the **Plus (+)** button increases the selected value.

AUTO: When the OSD menu is displayed, the **AUTO** button functions as an **ESC** or **BACK** button. When the OSD menu is not displayed, the **AUTO** button adjusts the screen automatically.

POWER: The power button is used to turn the monitor on/off. When it is powered on, the LED to the right of the button glows green. When in standby, the LED glows red. When power is turned off, the LED is also off.

6. Connections

DVI: This DVI input can accept both DVI-A and Single Link DVI-D signals. A DVI cable is NOT included.

VGA: The standard VGA input. Plug one end of the included VGA cable into your video card output and the other end into this monitor input.

DC IN: Plug the DC barrel connector on the AC adapter into this jack.

USB: This USB A male port is used to connect the monitor to your PC's USB port. A USB A male to A male cable is included.

7. Adjustable Stand

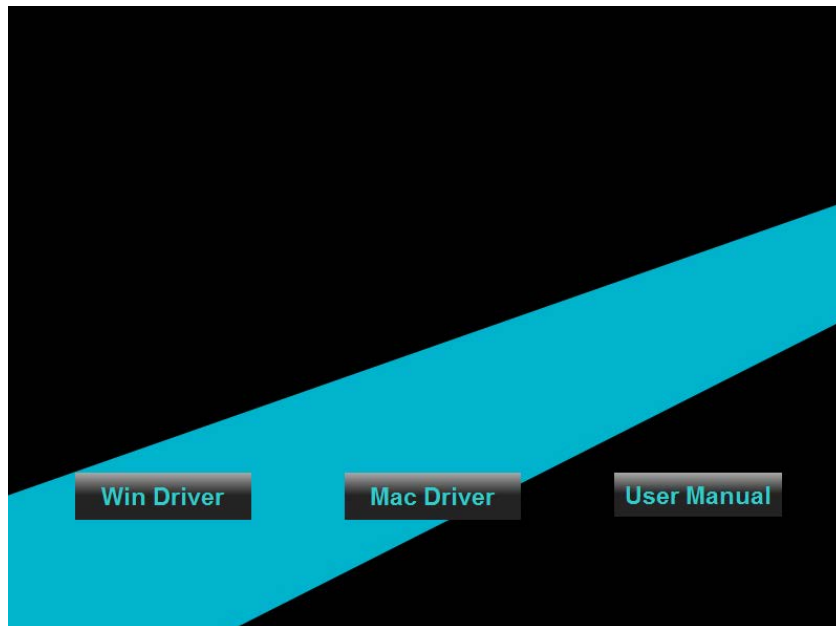
The monitor stand is designed to provide a wide range of adjustments, so you can find the optimum angle to suit your style and needs. To adjust the stand, pull up on the release latch, then adjust the stand as desired. The stand can be adjusted to present the screen at a 10 ~ 80° angle.

8. Software Installation

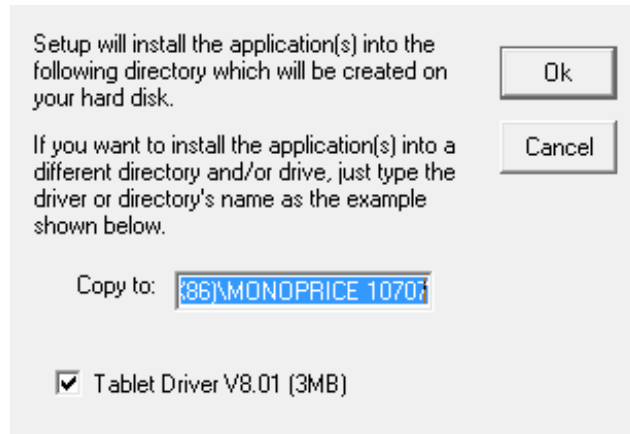
Important! Do not plug the monitor into your PC until after you have installed the driver software.

Unless your computer is running Windows 8, which has built-in touch-screen/tablet support, you will need to install the device driver and utility. To install the driver, perform the installation steps below:

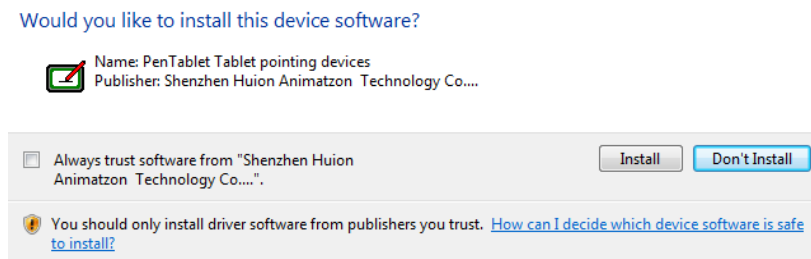
1. Insert the Driver CD into the CD-ROM drive and wait for the main installation screen to appear. If you have autorun disabled or for some other reason the installation program does not start, open the disc in Windows Explorer and double-click the **SETUP.EXE** program to begin the setup.
2. Click the **Win Driver** button to launch the installer.



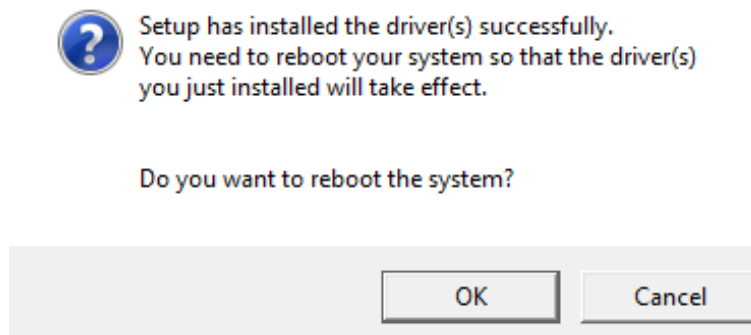
3. The default install directory is **C:\Program Files (x86)\Monoprice 10707**. Click the **OK** button to begin the installation process.



4. If prompted by Windows Security to verify the driver source, click the **Install** button to continue the installation. Repeat this process as needed until the installation is complete.



5. When the installation is complete, you will be prompted to reboot your computer. However, since we need to install the hardware, we will want to power the computer down instead. Click the **Cancel** button then save any open files and power off your PC.



9. Hardware Installation

Note: This Pen Monitor does not function properly in a Windows multi-monitor configuration. For proper operation in Windows, it must be the only monitor connected to the system.

After you have installed the software driver and utility to your system and after you have powered it off, perform the following steps to connect the monitor to your system.

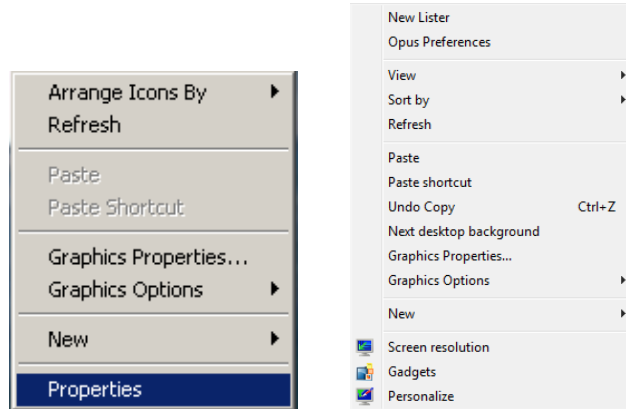
1. Ensure that your computer is powered OFF.
2. Unplug all other monitor connections from your PC.
3. Position the monitor so that you can easily access the connections on the rear.
4. Plug one end of the included VGA cable into the **VGA input port** on the monitor and plug the other end into the **VGA output port** on your computer. Tighten the thumbscrews on each connector to ensure that they do not come loose.

Note: Alternatively, you can use a DVI cable (not included). Your video card should be capable of producing DVI-A or Single Link DVI-D signals.

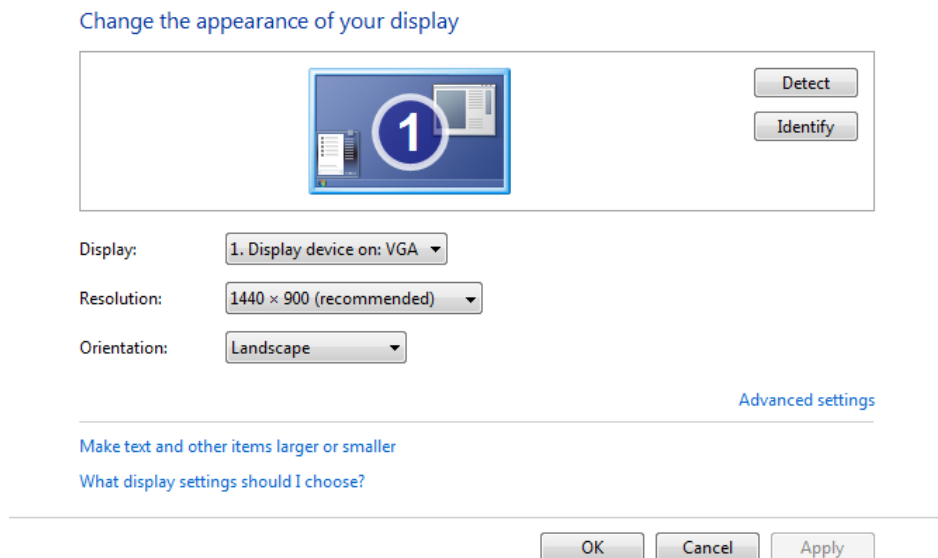
5. Plug the DC barrel connector on the AC adapter into the **DC IN** port on the back of the monitor.
6. Plug the C13 connector on the AC power cord into the AC adapter. Plug the other end into an AC power outlet.
7. Press the **Power** button on the monitor, then power on your computer.

Important: Do not plug in the USB cable yet. This will be done after the PC has been restarted.

8. Once your computer has completed its startup procedure, right-click the desktop to access the **Context** menu. If you are using Windows XP, select the **Properties** option. If you are using Windows Vista or Windows 7, select the **Screen Resolution** option.



9. If using Windows XP, click the **Settings** tab to get to the resolution screen. For Windows Vista and Windows 7 you are already on the resolution screen. Ensure that the video resolution is set to 1440 x 900. Click **OK** to continue.



10. Plug one end of the included USB cable into the USB port on the monitor and the other into an available USB port on your computer. Windows will then finalize the installation of the monitor and its driver.

Your device is ready to use

USB Composite Device	✓ Ready to use
USB Input Device	✓ Ready to use
USB Input Device	✓ Ready to use
USB Input Device	✓ Ready to use
PenTablet Simulated driver for HID Minidriver	✓ Ready to use

Close

10. Pen Operation

Prior to using the pen stylus, ensure it is fully charged by plugging it into a USB charging source using the included proprietary USB charging cable. The pen will take about 1 hour to fully charge.

LED Indicator

The LED on the pen indicates the charge status with the following patterns:

LED glows red: Charging is in progress.

LED off: Charging is complete.

When the pen performance and response starts to deteriorate, it is time to recharge the pen's internal battery.

Note: The pen's LED is located behind the buttons and can be seen through the opening in the case.

11. Usage Tips

The following guidelines will help obtain the best results in using this Graphic Tablet:

Double Tapping: A quick double tap of the pen tip is the equivalent of a double-click on a mouse.


Scrolling: The pen can be used to perform the same scrolling function available with an ordinary wheel mouse.

Using With a Mouse: In addition to the tablet and pen, you can also have a mouse connected and installed. However, only one device will function at a time. Do not connect more than two input devices at the same time as it could cause the cursor to jitter or freeze.

Storing: Do not store the pen in such a way that pressure could be applied to the tip. When not in use, store the pen in a pen holder or place it horizontally on a flat surface. When storing for a long period of time, remove the pen tip using the instructions found in this manual.

II. Configuration

The configuration utility allows you to modify pressure sensitivity, monitor selection, customize the buttons, etc.

Locate the tablet icon  in the system tray and click it to open the Pen Tablet Settings application. Alternatively, you can run the application directly from the installation directory. Assuming you installed to the default directory, the utility is located at:

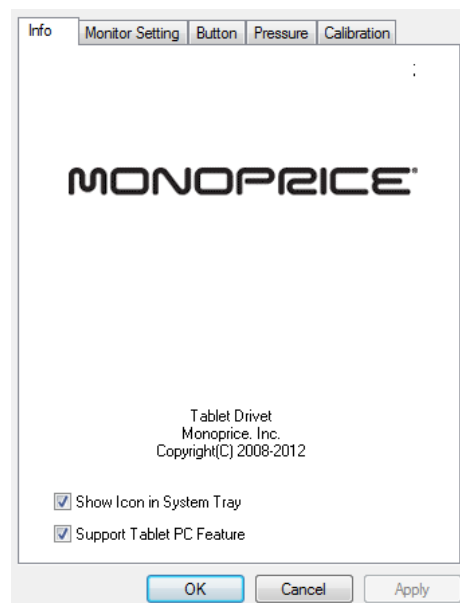
C:\Program Files (x86)\Monoprice 10707\PLaunch.exe

1. The Info Tab

The Info tab displays the driver version number. Additionally it has two options, which are selected by default:

Show Icon in System Tray: This option determines whether the tablet icon will be displayed in the system tray. It is recommended to leave this enabled to allow easy access to the tablet and pen settings dialog.

Support Tablet PC Feature: When selected the pen's pressure sensitivity feature will function properly in Microsoft Journal, OneNote (2003-2007), etc. This does not affect the pressure sensitivity function of common art software packages, such as Photoshop, Illustrator, Corel Painter, etc.



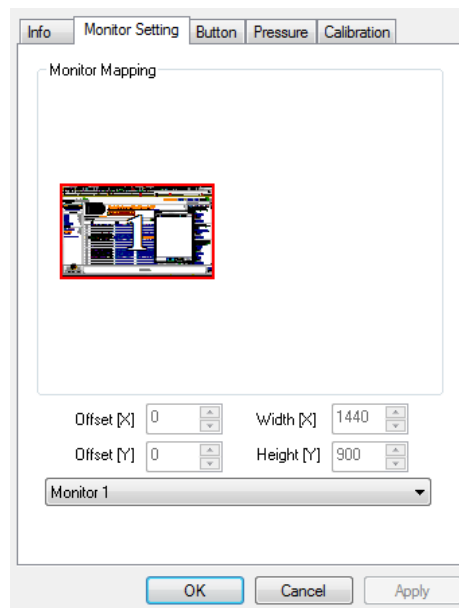
2. The Monitor Setting Tab

Monitor Mapping: This displays which parts of the monitor(s) are active for pen/tablet operations.

Drop-Down List Box: The drop-down list box at the bottom of the dialog allows you to select the how much of the monitor is to be covered by pen/tablet operations. The only selectable option is **Monitor 1**.

Offset X/Y: This option is not used.

Width X/Y: This option is not used.



3. The Button Tab

The Button tab allows you to modify the functions of the pen tip and two barrel buttons to any of the functions available on a 3-button mouse.

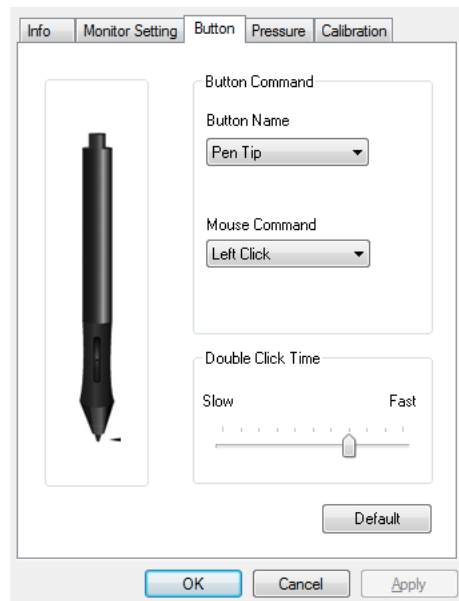
1. To change the functionality of the pen tip or one of the two barrel buttons, first use the **Button Name** drop-down list box to select the tip or button to be modified.

2. Use the **Mouse Command** drop-down list box to select the desired function. You can select:

- No Action
- Left Click
- Left Double Click
- Right Click
- Right Double Click
- Middle Click
- Middle Double Click

3. Use the **Double Click Time** slider to determine how quickly you must double-tap or double-click to get the pen to register a double-click.

4. Click the **Default** button to restore the original default settings.



4. The Pressure Tab

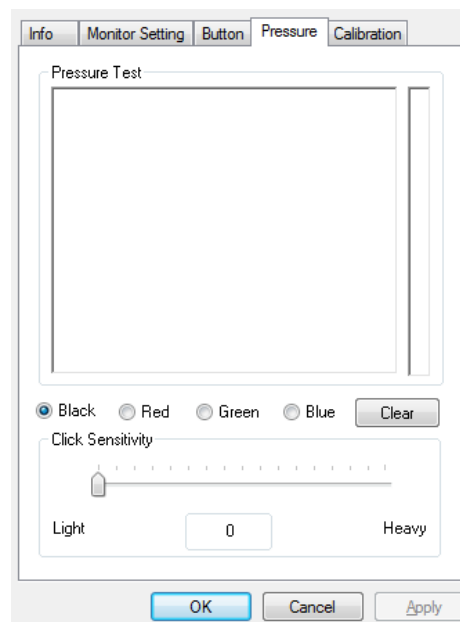
This dialog allows you to test the pressure sensitivity of the pen and to adjust the sensitivity of the pen's "click" function.

Pressure Test: Use your pen within this area to test the pressure sensitivity. Pushing hard will draw a thick, bold line, while light pressure will result in a thin, light line. The vertical bar to the right of the test area will increase in amplitude to indicate the amount of pressure being applied.

Black, Red, Green, Blue: Use these radio buttons to select the pen color to use during the test. This allows you to see the effects with the four primary colors.

Clear: Click this button to clear everything from the Pressure Test area.

Click Sensitivity: Use this slider to set the sensitivity at which a "click" is detected with the tip. If you have a heavy drawing hand or are drawing thicker, heavier lines, you will want to use a heavier click sensitivity.



5. The Calibration Tab

This dialog allows you to calibrate the pen and monitor, to ensure that it points accurately to the various locations on the screen.

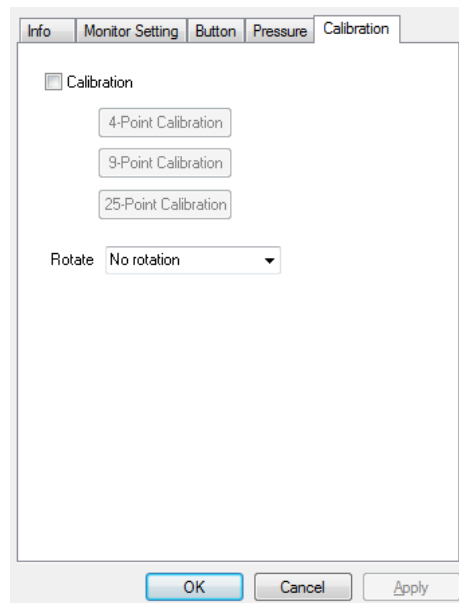
Calibration Check Box: To enable calibration, first click here to put a check mark in the box, then click one of the three calibration buttons:

4-Point Calibration: Calibrates using a single point in each of the four corners of the screen. This minimal calibration is usually good enough for good pen accuracy.

9-Point Calibration: Calibrates using three points across the top of the monitor, three across the middle, and three across the bottom. This will give a better level of calibration for improved accuracy.

25-Point Calibration: Calibrates using 25 points on screen, arranged in a 5x5 grid. This produces the highest level of pointing accuracy.

Rotation: This pull-down list box allows you to adjust the pen's response in relation to the screen's orientation. The screen and pen combination can be set to work properly with the screen positioned upside down, right side up, or on either side.



III. Pen Storage and Maintenance

1. Storing the Digital Pen

The digital pen should be stored in such a way that nothing touches the tip. Prolonged pressure on the tip, even a slight pressure, can damage the ability of the pen to use the full range of pressure sensitivity.

If the pen will simply be unused overnight or for any other short period of time, placing it in the included pen holder or horizontally on the desk is sufficient. For long-term storage or shipping, the tip and battery should be removed.

2. Charging the Battery in the Digital Pen

Prior to using the pen stylus, ensure it is fully charged by plugging it into a USB charging source using the included proprietary USB charging cable. The pen will take about 1 hour to fully charge.

LED Indicator

The LED on the pen indicates the charge status with the following patterns:

LED glows red: Charging is in progress.

LED off: Charging is complete.

When the pen performance and response starts to deteriorate, it is time to recharge the pen's internal battery.

Note: The pen's LED is located behind the buttons and can be seen through the opening in the case.

3. Replacing the Pen Tip

If the pen tip needs replacing or removal due to long-term storage, perform the following steps as applicable:

1. Open the pen holder and remove the metal Pen Clip.
2. Position the Pen Clip over the exposed portion of the pen tip. Squeeze the clip with your fingers to provide a firm grip on the tip.
3. Pull gently until the tip is completely removed.
4. Take a replacement tip out of the pen holder and gently insert it into the pen until it is fully seated into place.
5. Use the Pressure Test dialog in the driver utility to test the operation of the newly replaced tip.