

Hotline™ Communication Software



PART #	DESCRIPTION
30658	Hotline Software Package IQ plus® 800/810 Version 3

The next generation of interactive scale equipment and application flexibility has arrived! Hotline, an advanced software package, enables operator configuration communication with an IQ plus 800/810 digital indicator from an IBM®-compatible personal computer.

A unique menu-driven format was designed for scale technicians with minimal computer experience. Intuitive data screens quickly create and edit parameter and configuration files. Pop-up windows display setting options for parameters with multiple choices. An indicator's current parameter settings can be uploaded to the PC and stored as a parameter file. Saved files can be retrieved and downloaded efficiently to replacement or identically functioning indicators.

Hotline requires a 286 computer or better with MS-DOSTM 3.3 or above, at least 3 megabytes of available hard drive space, and an EGA monitor or better. Data is transmitted via RS-232 from the computer's serial port to the indicator's EDP serial port. After initial installation, all communication links are automatically established between the indicator and host computer.

Applications

- IQ plus® 800/810 and PC communications interface
- Multiple-recipe batching
- Library reference of programming and calibration constants

Standard Features

- User-friendly intuitive graphic data entry screens
- File management allows downloading of saved parameter files from PC to IQ plus 800/810
- Upload configuration parameters from IQ plus 800/810 to PC file
- Interactive scale calibration
- Formula storage for multiple-recipe batching applications
- Parameter settings report
- Custom print format for 5 configurable print tickets
- Automatically establishes indicator and PC communication links
- 3.5" and 5.25" high-density installation disks
- Communication port adapter
- Monitor mode allows entering of control codes

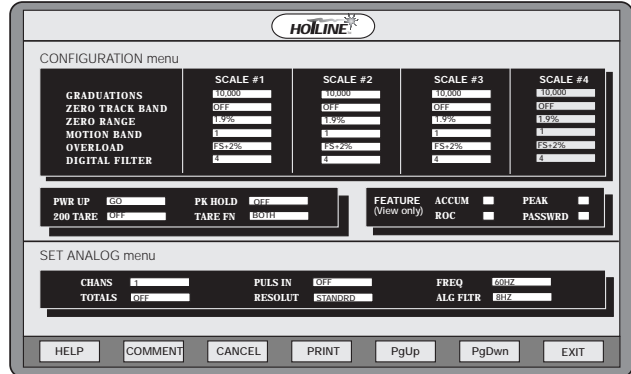
Options/Accessories

22446	Hotline Software Package IQ plus® 800/810 Version 2.3
-------------	--

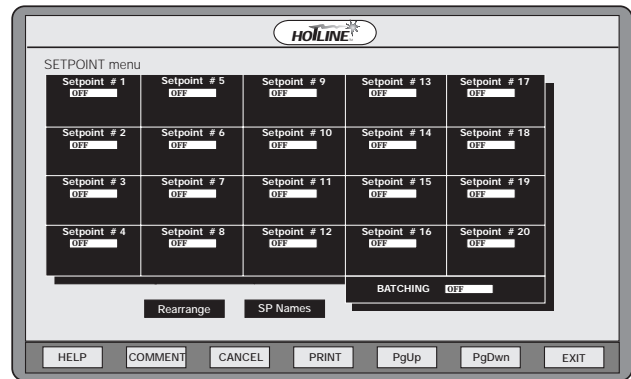
HARDWARE REQUIREMENTS:

- IBM-compatible 286 or later model computer
- EGA monitor or better
- MS-DOS Version 3.3 or better
- 3 megabytes of hard drive space

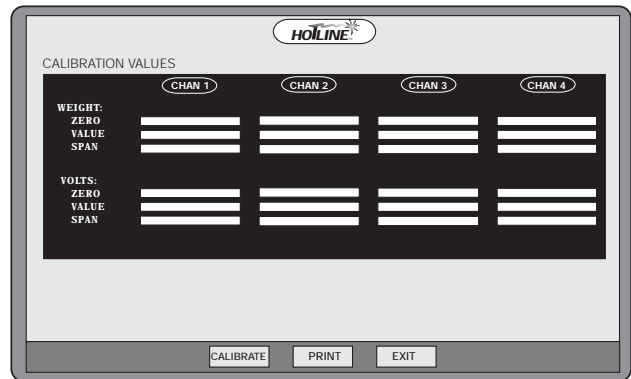
A single setup screen displays all configuration and set analog sub-menus for extraordinary programming ease. Operator assistance windows display all parameter setting options.



The setpoint sub-menu simultaneously displays all 20 setpoint parameters. Intuitive data windows present all pertinent setpoint information.



Experience an approach to calibration never before realized with conventional front-panel programming methods. Interactive commands guide the technician through the entire calibration procedure for all active input channels.



MS-DOS is a trademark of Microsoft Corporation. IBM is a registered trademark of International Business Machines.

LABEL MATRIX for Windows™ Label Creation Software



PART #	DESCRIPTION
34676	Label Matrix for Windows

Now you can design and print high quality, accurate bar code labels—the easy way—with Label Matrix for Windows or DOS. In addition to standard bar code information, Label Matrix lets you import PCX graphics such as those created by Paintbrush. Using an IBM or compatible PC, you can choose your design from our samples, or create your own from scratch.

With full mouse support and easy pull-down menus, this may be the simplest bar code software printing program you'll ever use. You can either start in the beginner mode or access all the power of Label Matrix. We even provide a WYSIWYG design screen so that "What You See Is What You Get." A comprehensive user's manual is also included to help with any questions you may have.

Applications

- Shipping labels
- Bar code printing
- Point of sale
- Inventory control

Standard Features

- WYSIWYG label creation
- Supports all popular bar code symbologies
- Supports graphic images
- Input data with keyboard or scanner
- Internal database

Options/Accessories

34677 Label Matrix for DOS™

SYSTEM REQUIREMENTS:

WINDOWS VERSION

Windows 3.1 or higher
 PC-DOS/MS-DOS 3.0 or higher (6.0 is recommended)
 8-10 megabytes of hard drive space required
 8 megabytes of RAM
 One 3.5" floppy disk drive

DOS VERSION

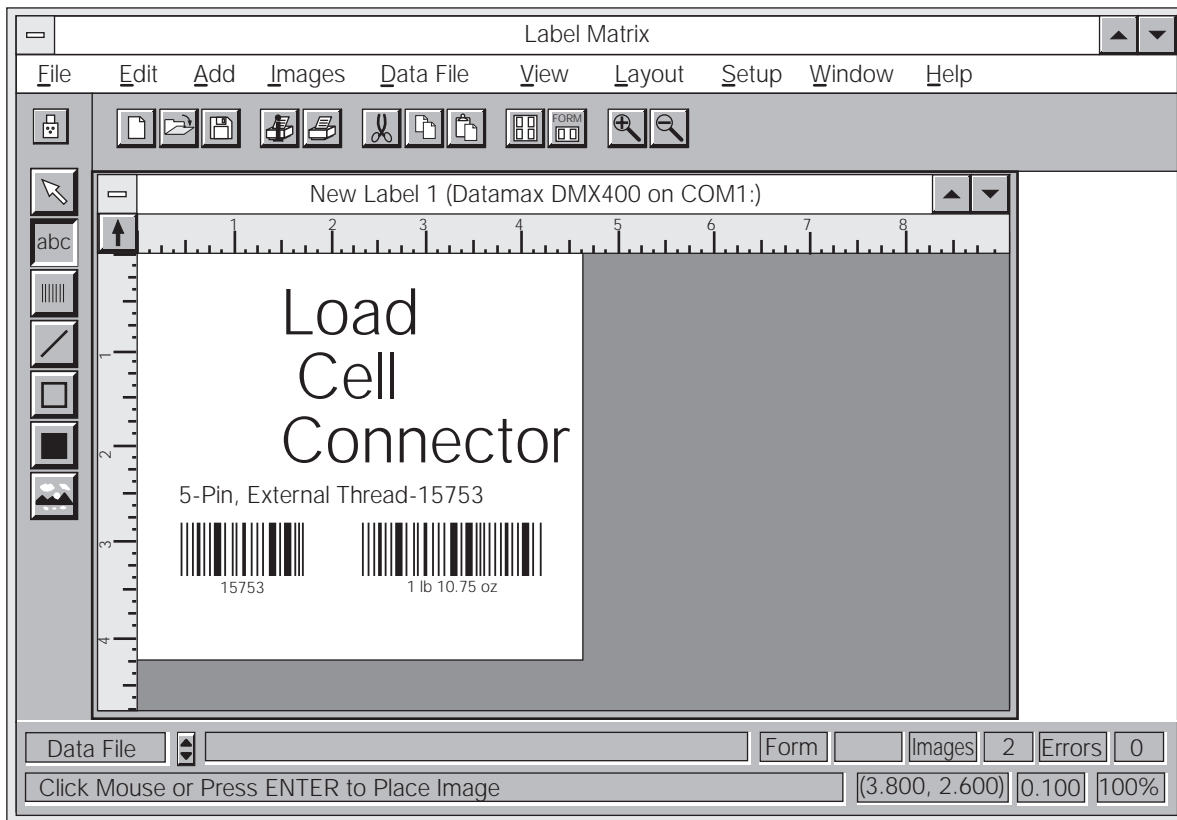
IBM XT, AT, PS/2 or compatible
 PC-DOS/MS-DOS 3.0 or higher (6.0 is recommended)
 5-7 megabytes of hard drive space required
 640K RAM to design labels
 One 3.5" floppy disk drive
 Hercules, CGA, EGA, VGA graphics monitor
 Serial port for mouse (optional)

2-D BAR CODES SUPPORTED

PDF417
 Data Matrix
 Maxicode
 CODE 49
 16K

BAR CODE FORMATS SUPPORTED

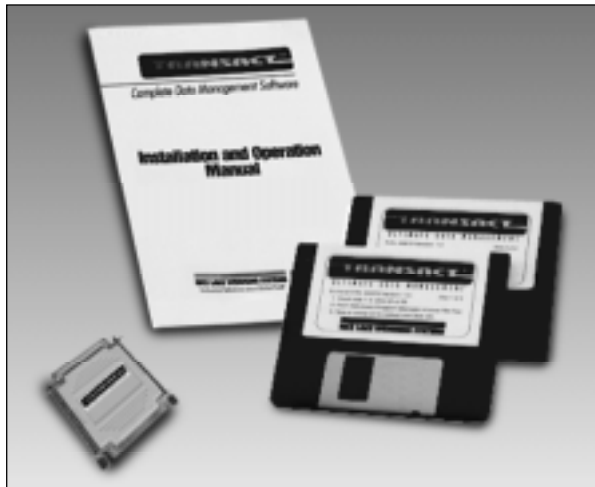
UPC A and E
 EAN/JAN 8 and 13
 Interleaved 2 of 5
 Code 39 (3 of 9)
 Extended 39
 HIBC
 MSI Plessey
 Codabar
 Code 128 (Auto, A, B or C)
 Code 93 and Extended 93
 POSTNET
 UCC128



Windows and DOS are trademarks of Microsoft Corporation.

TransAct™/TransAct™ Plus 2.0 Truck Data Management Software

NEW!
Version 2.0



PART #	DESCRIPTION
43898	TransAct Version 2.0
43899	TransAct Plus Version 2.0
40505	TransAct Demo Package



Designed for scale operators with little computer experience and office managers who require quick and accurate information, TransAct and TransAct Plus feature intuitive menus, detailed transaction information, enhanced search capabilities, and configurable reports.

These versatile programs allow two scale operation and multiple transactions per ticket. Aging reports show both current and extended balances, and credit weight limits automatically track weight per transaction in relation to the set limit.

TransAct and TransAct Plus also offer powerful features such as unlimited product, truck and customer fields, full reporting with automatic accounting and invoicing, configurable ticket generation, superior data integrity, and much more. The optional pcANYWHERE package allows for long distance on-line product support. Also allows for easy transfer of transaction information to remote sites.

Applications

- Landfill and recycling
- Sand and gravel
- Solid waste management
- Forestry, mining

Standard Features

TransAct/TranAct Plus:

- Intuitive menu-driven program
- Powerful data base with unlimited number of products, customers, weight containers, trucks, and trailers
- Configurable product rates
- Supports bar code, mag strip, or RF reader input for automatic transactions
- Report to screen or printer, or export by tab-delimited text format
- 3 configurable tares
- Predetermined, keyboard and automatic tare entry
- 4 configurable category tables
- Unlimited configurable ticket formats
- Automatic ticket processing
- Permit fields

NEW! Two scale operation

NEW! Multiple transactions per ticket

NEW! Networkable (Novell)

NEW! Expandable reporting features

NEW! Transaction importing/exporting, for long distance transfers in non-networking applications

NEW! Credit weight limits

• NTEP certified

TransAct Plus:

• Full accounting capabilities, including financial, payable, receivable and tracking

NEW! Aging report showing current and extended balance 30, 60, 90 days

• Prints customer invoices with detailed transaction information

• Diverse reports by account, revenue, tonnage, material, transaction, customer, date and more

NEW! Job table for contract purchases

Options/Accessories

15552* Custom RS-232 interface cable

Custom cables are designed to interface with your specific equipment. Please specify equipment model number and connector type. Standard cable length is 5' (1.5m). Additional charge for cables over 5' (1.5m) long.

42745 pcANYWHERE for Windows 95, 3.1, host and remote version

37882 Additional operating manual

SYSTEM REQUIREMENTS:

Windows 3.1 or higher (including Windows 95)
 NOTE: TransAct/TransAct Plus will not run on DOS alone.
 MS/DOS 3.3 or higher (5.0 or higher preferred)
 IBM compatible 486 75 mHz or higher (Pentium preferred),
 8 megabytes (minimum) or RAM (16 preferred)

DATABASES:

Virtually unlimited with user-definable categories.
 Automatic journaling with automatic rebuild after crash or power interrupt.

COMMUNICATIONS:

Support for 2 printers with selectable drivers for most popular printers.

TRANSACTION TICKET:

Configurable weigh-in and weigh-out ticket formats, complete selection of variables and data types.

REPORTS:

Full reporting capabilities by account, vehicle, material, hauler, area, ticket, truck, container, trailer, or date.
 Ages report 30, 60, 90 days.

EXPORT DATA:

Reports can be exported via tab-delimited file format.
 Export/Import function for transferring transaction data in non-networking applications.

TRANSACTION CALCULATIONS:

Definable product rates, charges, taxes, and customer discounts.
 Configurable percentage weight reductions for moisture and dockage.

ACCOUNTING:

Full accounting capabilities

- Accounts Payable
- Accounts Receivable
- Balance/Reconciliation

SOFTWARE SUPPORT:

Rice Lake Weighing Systems offers field software support for TransAct/TransAct Plus. The Direct Access Service Hotline provides access to our software support staff and includes a charge for software support. However, support will be provided at no charge for diskette or program software defects.

APPROVALS:

NTEP certified CC# 97-034

Version 2.0 Added Features:

- Two-scale operation
- Multiple transactions per ticket
- Axle weighing
- Networkable (Novell)
- Expanded reporting features
- Expanded tax and product rate tables
- Transaction importing/exporting for use with long distance transfers in non-networking applications
- Credit weight limits
- Job table for contract purchases (TransAct Plus)
- Aging report to show current and extended balances 30, 60, 90 days (TransAct Plus)

Customer Account Table

Truck/Container Cash Transaction

Dual Scale Weigh Form

Windows is a trademark of Microsoft Corporation.
 pcANYWHERE is a trademark of Symantec Corporation.