

User manual



Juice machine Torn

Your retail dealer

.....
.....

List of contents

List of contents	page 2
Dispenser description	page 3 -7
Installation	page 8 - 9
Cleaning instructions	page 10
Trouble shooting	page 11-12
Notes	page 13
Technical data	page 14

Dispenser description Torn

General description Torn juice machine

Please read this manual before you take the machine into operation for the first time. The manual contains important instructions for a safe and proper use of the machine. Always keep this manual within reach for the user!

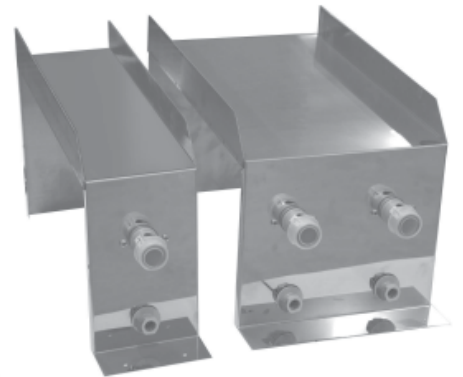
The juice machine should be installed and serviced by trained staff.

Tower is a dispenser for mixing water and juice concentrate to a ready drink product. The dispenser is for 2 to 3 drinks.

OPTIONS

Bag shelf. For 2 - 3 boxes. Fitted with 2 - 3 pinch solenoids. Prevents the silicon tube to kink and makes the handling of bag and box easy.

Note! Not for bag-in-box with vitop connection.

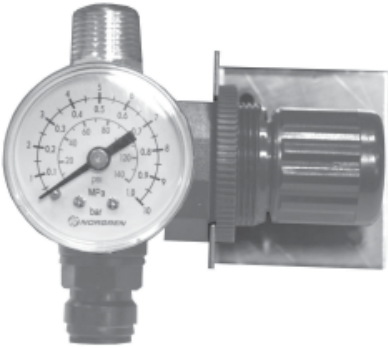


Trolley for tower. Built in bag shel fitted with 2 - 3 pinch solenoids. Fitted with 4 wheels, .2 lockabled wheels.



Dispenser description Torn

Picture



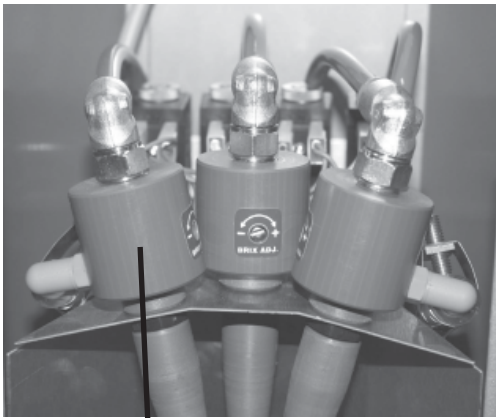
description

Water regulator

The water-regulator can be adjusted up to 6 bar.
The minimum pressure is 2,7 - 3,2 bar.

Note! When adjusting the pressure, dispense product.
If a water cooler is used shall the water regulator be fitted
before the cooler.

In the trolley is the water regulator located under the
bag shelf.



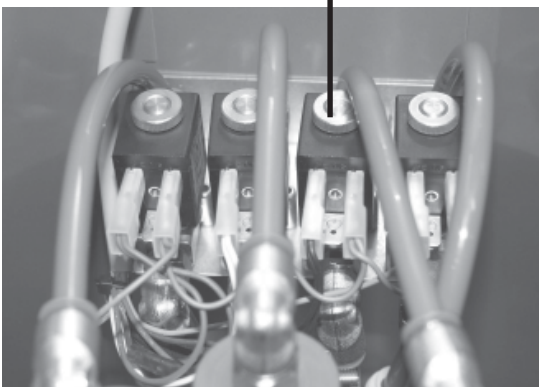
Ejector

Ejector

The mixing ratio is adjusted on the ejectors. When water
flows through the ejector, the concentrate mixes with the
water.

Turn the adjustment screws according to the label on the
ejector in order to increase or decrease the amount of
concentrate.

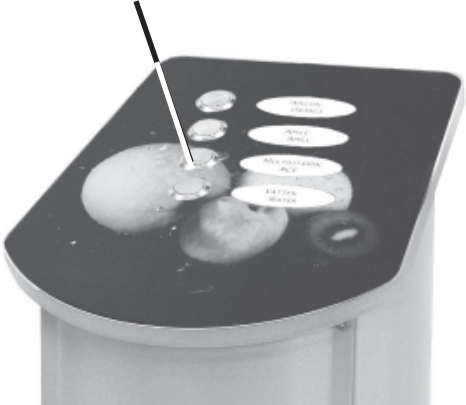


Water valve






Water valve

The Water valve is connected to the ejector and opens the
water-flow. Parallel connected to the water valve is cables
to the pinch solenoid connected.

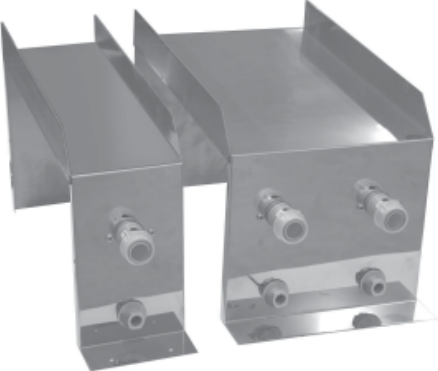
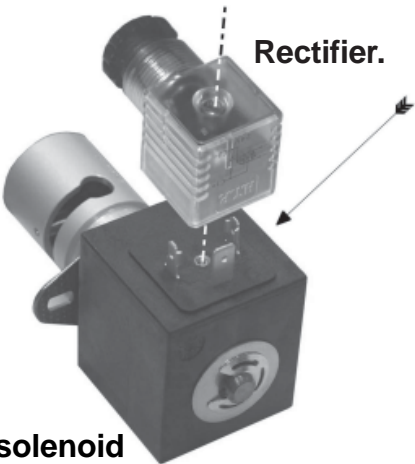
Dispenser description Torn

Picture	description
<p data-bbox="140 320 352 353">Push-buttons</p> 	<p data-bbox="719 327 911 360">Push-button</p> <p data-bbox="719 416 1505 488">The push button on the tower control the water valves and the pinch solenoid.</p>
	<p data-bbox="719 947 906 981">Transformer</p> <p data-bbox="719 1025 1469 1171">The transformer is a 230 / 24 V (32 VA). The transformer supplies 24 V to the magnetic-valves. Mount the transformer on the wall, and connect it to the wallsocket.</p>
	<p data-bbox="719 1597 943 1630">One way valve</p> <p data-bbox="719 1675 1505 1821">At the end of each product tube there is a one way valves pushed in to the tube. If the tube is shortened make sure that the one way valve is put back in to new shorter tube.</p>

Dispenser description Torn

Picture	description
	<p>Drip tray</p> <p>Stainless steel drip tray with possibility to connect drainage. can be cleaned in a dishwasher.</p>
 <p>Air circulation</p> <p>Make sure that the cooler has enough air circulating through the unit. The cooler can not be installed in a cabinet unless it has plenty of air circulating through the cabinet. This is hard to get in most cabinets. Install the cooler in a open space not covering the ventilation holes of the cooler. Make sure to have at least 30 cm of free space around the cooler.</p> 	<p>Water cooler.</p> <p>Is cooling water to the tower. Can be fitted external for stand alone tower or be fitted in to the trolley for tower.</p> <p>Large particle-filter</p> <p>A large particle-filter is fitted between the cooling block and the water valves. It is possible to rinse the filter if needed.</p> <p>6.</p>

Dispenser description Torn

Picture	description
	<p>Bag shelf</p> <p>Install the bag shelf as close to the tower as possible. The length of the product tubes can never be extended longer than it is from factory. Connect the product tubes to its connectors located at the inside of the bag shelf with tube clammers.</p>
 <p data-bbox="106 1384 336 1420">Pinch solenoid</p>	<p>Pinch solenoid</p> <p>Connect the cables from the water valve to its pinch solenoid.</p> <p>Do not forget the rectifier.</p>

Installation Torn

Separate tower with or without water cooler.

1. Connect the water hose from the tower to the water regulators out going line.
Please observe If a water cooler is used this tube shall be fitted to the cooler coil number 1 first and then from the other side of number 1 coil on the cooler to the water regulator. (Connect the particle filter on to this tube).
2. Connect the in going line to the regulator to the water main (cold water). It is strongly recommended to use some sort of water stop in case of a emergency leakage.
Flush the water main line before connecting the hose to get rid of any particles in the main lines.
3. Turn on water and look for leaks.
4. Connect the product tubes from the tower on to the bag connectors with a tube clamps.
Make sure that they go on to the right ones left to left and so on.
5. Connect the pinch solenoid cables from the tower to the pinch solenoids (left to left and so on).
6. Connect power to the transformer and the cooler if used.
7. Take out water from the tower by pushing on one button.
8. Check the water pressure while taking out water from a product button. (2,7 bar on the gage at the water regulator).
9. Connect a bag to the bag connector and through the pinch solenoid.
10. Draw out product up to the tower by pressing its push buttons.
11. Adjust the brix, use the adjustment screw on the ejector.
12. The dispenser is now ready to use.

Tower on trolley with or without water cooler

1. Connect the water hose from the water main to the trolley. Connection on trolley is located underneath the trolley. It is strongly recommended to use some sort of water stop in case of a emergency leakage. Flush the water main line before connecting the hose to get rid of any particles in the main lines.
2. Turn on water and look for leaks.
3. Connect the power to the trolley.
4. Take out water from the tower by pushing on one button.
5. Check the water pressure while taking out water from a product button. (2,7 bar on the gage at the water regulator).
6. Connect a bag to the bag connector and through the pinch solenoid.
7. Draw out product up to the tower by pressing its push buttons.
8. Adjust the brix, use the adjustment screw on the ejector.
9. The dispenser is now ready to use.

Cleaning instructions Tower

Connecting the BIB.

1. Open the box at the perforation underneath, pull out the tube and the coupling. (See fig 1). Open the seal to the box by screwing in the part with the tube in the coupling into the box. Make sure to fit the couplings completely into each other.
2. Place the box on the BIB-stand. Press the button on the pinch solenoid valve and place the tube in the slot. (See fig 2).
3. Push the tube coupling into the grey coupling and turn the knob on the tube coupling to open.
4. Press each push button to allow the concentrate into the tower.
The dispenser is now ready to use.



Fig. 1.

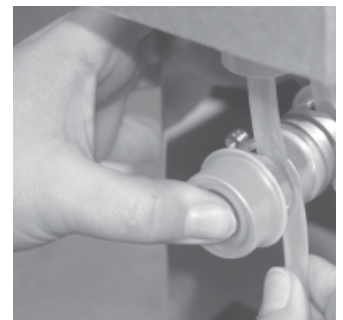


Fig. 2.

Cleaning

1. The system shall be rinsed once a day by hot water.
2. Close the knob on the tube coupling to the bag and disconnect the coupling from the BIB stand.
3. Fill a bucket with lukewarm water. Put the hose into the bucket and connect the hose to the coupling on the BIB-stand. Flush with at least 3 litres of water through each product by pressing respective push button. (See fig 4).
4. Dismount the outlet and clean pipes with a brush.
5. Rinse the pinch solenoid valve when needed. Rinse the pinch solenoid valve in hot water.
6. Perform points 3-4 when connecting e new bag.



Fig. 3.



Fig. 4.

Trouble shooting Torn

Problem	Probable cause	Attend to
Concentrate is Dripping from outlet pipe.	The tubes to the tower needs a cleaning.	Clean tubes going up to the tower.
Mostly water or only water coming from outlet pipe	The tube is kinked due to incorrect length.	Cut the tube to correct length.
	The tube is twisted.	Untwist the tube.
	The bag is empty.	Replace bag.
The drinks are not cold	Failure in thermostat. Failure in cooling system.	Replace thermostat. CALL Service.
Nothing happens when I push the buttons, and there is no "clicking" sound.	No power to the valves.	Check the valve on/off switch inside the door.
	A fuse in the transformer is blown.	Remove power to the dispenser and change fuse.
Only water is dispensed.	The pinch solenoid valve is not working properly.	Clean the pinch solenoid valve with hot water.
	The bag is not properly installed.	Disconnect the bag and connect again.
	The bag is empty.	Replace bag.
The taste is to strong or weak.	The ejector is not adjusted correctly.	Adjust the brix.

Trouble shooting Torn

Problem	Probable cause	Attend to
<p>Nothing happens when you push the buttons, and there is a "clicking" sound.</p>	<p>Water supply turned off</p>	<p>Check water supply</p>
	<p>Water regulator turned off or failed.</p>	<p>Check water regulator</p>
	<p>The cooling coil has frozen.</p>	<p>Shut off water supply and Call service.</p>
<p>It constantly drips fluid from the outlet pipes.</p>	<p>There may be dirt in the water valve</p>	<p>Shut of water supply. Open the water valve and clean it.</p>
<p>The drinks are not cold enough.</p>	<p>The thermostat is not properly set.</p>	<p>Turn the adjustment screw 1mm at a time. See note 1.</p>
<p>Troubles with cooling system.</p>		<p>Contact the supplier or an authorised service company.</p>

NOTES Torn

	NOTES
NOTE 1.	The thermostat is factory adjusted and improper adjustment may cause the cooling system to freeze causing damage to the machine. Use caution when adjusting the thermostat.
NOTE 2.	It is strongly recommended to use some sort of water isolator in the water line in case of an emergency leakage.
NOTE 3.	If juice machine has been frozen or not been in used for a long time, inspect all couplings and water hose before machine takes in use again.
NOTE 4.	Maximum ambient temperature in the room where the dispenser is located should not exceed more than 25 °C.

Technical data Torn

Electrical connection	230 V/50 Hz/ 2,5 A
Water connection	3,0 m Tube with 3/8" internal thread (minimum 2,5bar water pressure.)
Compressor	Elektrolux GL 80
Refrigator	HFC-134 A Amount to fill 240 gram
Cooling capacity	294 W
Cooling system	Dry block with stainless-steel pipes inside.
Dispenser measurement	Height 399 mm With 145 mm Depth 336 mm

Torn

Juice machine



FOR SERVICE

Please contact your retail dealer

Din återförsäljare / Your retail dealer

.....

.....

.....

CREM International AB

Box 960, 671 29 ARVIKA, Sweden

Tel: +46 (0)570-477 00, Fax: +46 (0)570-47719

E-mail: info.se@creminternational.com www.creminternational.com

Art. nr/Art. no. 1704147