

# **CITY THEATRICAL I N C**

**UNIQUE LIGHTING ACCESSORIES**



AutoYoke®

## **2001 PRODUCT CATALOG**

752 EAST 133RD STREET BRONX, NY 10454  
718/292/7932 800/230/9497 FAX: 718/292/7482



## WELCOME

Welcome to City Theatrical's 2001 product catalog of award winning unique lighting accessories. Since 1994, we've been designing and manufacturing lighting accessories to meet the needs of the entertainment industry. Our new products for 2001 include:

- **AutoYoke® for PARnel:** This automated variable beamspread washlight is a new member of the very successful and reliable AutoYoke family.
- **Event PAR™:** A 575w MSD or MSR/2 discharge light source is incorporated into a Source Four™ PAR.
- **Image Multiplexer™:** This multiprism device turns any ellipsoidal with a 6 1/4" color frame slot into a multi-image projection device. Use with static or rotating gobos, or with CTI's EFX Plus<sup>2</sup> scenic projector for stunning moving effects.
- **Breakaways:** A complete line of popular breakaway bottles and glass from Jauchem & Meeh
- **Slip Way:** This unique product for taping cables has adhesive only on the outside edges of the tape, eliminating sticky residue left on cables.
- **Plastic Wrap:** An innovation from City Theatrical, this heavy-duty 2" wide clear plastic has no adhesive, but clings strongly to itself, allowing the user to bind cables or fabric without seeing a band or leaving any residue.
- **Fixture Spike:** If you are a designer who does outdoor lighting, take a look at this unique device for mounting lighting fixtures to the ground. (Our thanks to Chris Medvitz!)

Call or e-mail me anytime (800-230-9497 or [gfails@citytheatrical.com](mailto:gfails@citytheatrical.com)) with your product ideas. I enjoy talking with lighting professionals about our products and new product development. If you see a need for a product or have a product idea of your own, I'd like to hear from you. Many of the products in our catalog have come from our friends in the lighting industry, such as lighting designers, electricians, and lighting dealers. Thank you for your continued support of City Theatrical!

Gary Fails, President

## CONTENTS

AutoYoke® . . . . .	2-3	Fixture Accessories . . . . .	10-19
Event PAR™ . . . . .	4	Candle Lite™ . . . . .	18
EFX Plus <sup>2</sup> ™ . . . . .	5-7	Dry Ice Foggers & Accessories . . . . .	20-22
Breakaways . . . . .	8	Tubular Ripple Projector . . . . .	22
Plastic Wrap . . . . .	9	Image Multiplexer™ . . . . .	22
Slip Way™ . . . . .	9	Moving Light Accessories . . . . .	23-24
Blacktak™ . . . . .	9	Lightwright 3™ . . . . .	25

# CITY THEATRICAL I N C

752 EAST 133RD STREET • BRONX, NY 10454

Phone: 800/230/9497 718/292/7932 Fax: 718/292/7482

web: <http://www.citytheatrical.com> email: [info@citytheatrical.com](mailto:info@citytheatrical.com)

Every effort is made for this catalog to be totally accurate. However, an occasional printing error may occur. Therefore, we reserve the right to bill at corrected prices.



**Aquafog 3300™**



**The Hook**



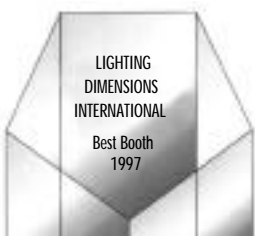
**EFX Plus<sup>2</sup>™**



**Beam Bender™**



**Lightwright 3™**



**Best Booth**



**Small Business  
Award 2000**



**AutoYoke™**



**Blacktak™**



**Image  
Multiplexer™**



**Lighting Accessory  
of the Year 1999**



**1997**



**1998**

Since City Theatrical began manufacturing and distributing products in 1994, we have grown to become a worldwide leader in the development, manufacturing and marketing of innovative lighting accessories. Over the last seven years we are proud to have been recognized for our hard work with a total of thirteen major product, service or business awards. Our highest goal is to develop products that help you do your job more easily and effectively.

CITY THEATRICAL would like to thank the following designers and inventors for allowing us to manufacture or distribute products created from their ideas. We salute their talent and creativity. Thanks!

- Jules Fisher for the Beambender™
- Jules Fisher and Peggy Eisenhower for Vari-Lite® accessories
- Ken Billington for Swivel Yokes
- John McKernon for Lightwright™
- Paul Palazzo and Event Systems for EFX Plus<sup>2</sup>™
- Chris Parry for Wedgelock™
- Chris Lewton and Allen Lee Hughes for the Drop in Boomerang
- Le Mark for Blacktak™ and Slip Way™
- Hermann Sorger for the Balancer and Follow Spot Yoke
- David C. Johnson for Candle Lite™
- Terry Richardson for the Follow Spot Handle
- Future Light Inc. for the C-Clip Truss Protector™
- Chris Medvitz for the Fixture Spike
- Lori Friedlander for the Image Multiplexer™
- Jauchem & Meeh for Breakaways

Call us anytime with your product ideas

**800-230-9497 or 718-292-7932**

## The First Automated Lighting Solution Designed for Theatrical use

The AutoYoke® is the first affordable solution for converting theatrical lighting fixtures into full-featured moving lights. Smooth, accurate and quiet, the AutoYoke's DMX control allows you to pan and tilt the unit, as well as drive color scrollers. With the AutoYoke for Ellipsoidal, the optional DMX controlled Autolris and AutoFocus also allow you to manipulate the size and sharpness of the beam of light. With the AutoYoke for Source Four™ PARnel, a motorized variable beamspread allows you to control the width of the beam of light.

Best of all, these are brought to you by the leader in innovative lighting accessories—City Theatrical.

### Features:

- Creates a low-cost incandescent moving light
- Designed for theatrical applications
- Fully functional onboard user interface
- 8 or 16 bit DMX control
- Accuracy of movement is less than 0.1°
- Lightweight
- No cooling fans
- User selectable travel limits and invert feature on all AutoYoke attributes
- Supports Wybron Forerunner™, Coloram II™, CXI, ChromaQ Broadway™, and Rainbow Pro Series™ Color Scrollers via AutoYoke power supply

### AutoYoke for Ellipsoidal

- Operates with all 19" - 50" Source Four™ and Strand SL Series ellipsoidals
- Operates with 5" and 10" ellipsoidals with some limitations
- Optional Autolris and AutoFocus available

### AutoYoke for Source Four™ PARnel

- Turns a Source Four™ PARnel into an automated variable beamspread washlight
- Adjustable beamspread of 25° - 45°
- Yoke includes Source Four™ PARnel fixture



Lighting Accessory  
of the Year 1999

NEW

NEW

NEW

NEW

NEW

NEW

NEW

NEW

NEW

NEW

Name	Cat. #	List Price
AutoYoke for S4 Ellipsoidal	5000	2,095.00
AutoYoke for S4 Ellipsoidal (CE Version)	5001	2,095.00
AutoYoke for Strand SL Ellipsoidal	5005	2,095.00
AutoYoke for Strand SL Ellipsoidal (CE Version)	5006	2,095.00
Autolris for S4 Ellipsoidal	5010	420.00
Autolris for Strand SL Ellipsoidal	5015	420.00
AutoFocus for S4 Ellipsoidal	5020	580.00
AutoFocus for Strand SL Ellipsoidal	5025	580.00
AutoYoke with PARnel (includes fixture)	5060	2,995.00
15" AutoYoke Scroller Cable for Wybron Forerunner, ChromaQ, or Rainbow Pro	5035	69.75
15" AutoYoke Scroller Cable for Wybron Coloram II or CXI (reversed polarity)	5036	69.75
AutoYoke "A" Size Template Holder	5040	20.95
AutoYoke "B" Size Template Holder	5041	20.95

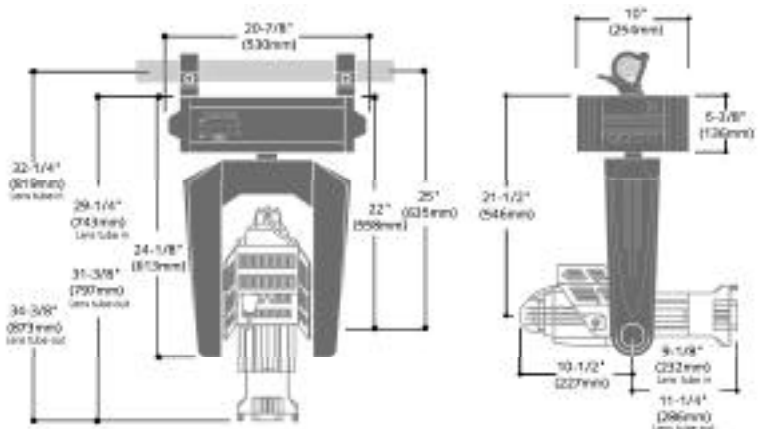
Log on to  
[www.citytheatrical.com](http://www.citytheatrical.com)  
for user manual, sample personalities  
for lighting consoles, and detailed  
product specifications.

## Specifications:

	AutoYoke for Ellipsoidal	AutoYoke for PARNet
<b>RANGE</b>		
Pan Range:	360 degrees	360 degrees
Tilt Range:	270 degrees	270 degrees
<b>SPEED</b>		
Pan Speed (360°)	7.5 seconds	4.0 seconds
Tilt Speed (270°)	4.0 seconds	3.0 seconds
<b>ELECTRICAL</b>		
Voltage:	100-240 VAC (autosensing)	100-240 VAC (autosensing)
Current:	1.3A @50/60Hz	1.3A @50/60Hz
Wattage:	40W	40W
<b>PROTOCOL</b>		
Required channels:	USITT DMX 512 7 channels (16 Bit) 5 Channels (8 Bit)	USITT DMX 512 7 Channels (16 Bit) 5 Channels (8 Bit)

## Dimensions:

### AutoYoke for Ellipsoidal

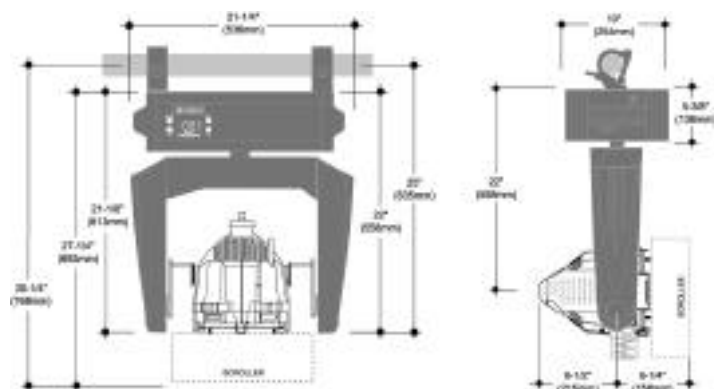


Conforms to UL STD 73, Eighth Edition- Motor Operated Appliances  
Certified to CAN/CSA C22.2 NO.:68.92, EN 55014-1:97, EN 55014-2:97



## Dimensions:

### AutoYoke for PARNet



# EVENT PAR™

- High output 575w cold re-strike washlight in a compact package
- Color temperature of 5600° K
- Many applications, including events, trade shows, industrials, architecture, film, video, etc.
- Remote ballast can be placed up to 100 feet from fixture head
- Automatic re-strike feature in case of power interruption
- Safety interlock switch prevents misuse or accidents (automatic lamp shut-off when cap is removed from fixture or head cable)
- Four lenses included with fixture (VNSP, NSP, MFL, and WFL)
- Complete line of City Theatrical Source Four™ PAR accessories available

*Call for more information regarding available custom finishes and colors*

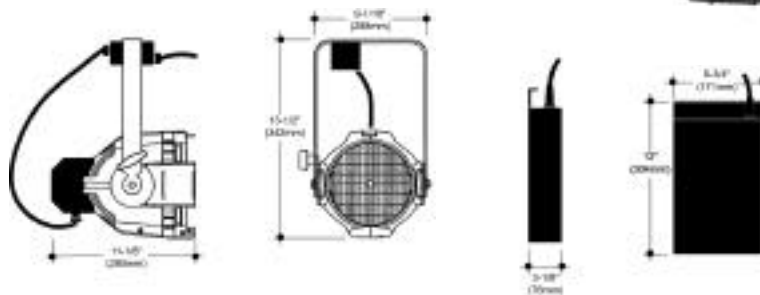
NEW

Name	Cat. #	List Price
Event PAR	5400	2,825.00

**event  
PAR™**



## Dimensions:



## Technical Specifications:

Weight of Fixture Head:	11 lbs.
Weight of Ballast:	8.75 lbs.
Line Voltage:	90 – 265 VAC (Auto-Sensing)
Line Frequency:	47 – 65 Hz
Power Consumption:	980 VA
Cooling:	Fan in ballast enclosure
Reflector:	Enhanced Aluminum faceted parabolic reflector
Compatible Lamps:	MSD 575, MSR 575/2, HSD 575, HSR 575/2
Lens:	Various lenses available (VNSP, NSP, MFL, WFL)



# EFX PLUS<sup>2</sup><sup>TM</sup>

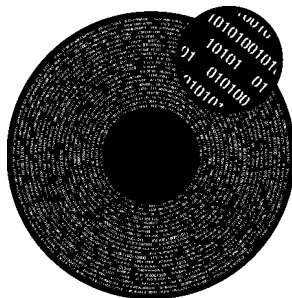
- Attaches to any Source Four<sup>TM</sup> ellipsoidal
- Large format pattern disks rotate in either same or opposing directions
- Lightweight; only 8 lbs.(3.63 kg)
- Maintains use of template slot and shutters
- Art glass slot
- Does not require any additional ventilation or space to use
- Comes complete with modified barrel
- Two planes of linear motion
- Variable speed control
- DMX controllable using only two channels
- Maintains use of barrel rotation
- RPM Range: 0-0.7 RPM or 0-12 RPM
- EFX Plus<sup>2</sup> effects can be viewed on your computer by downloading Spinster<sup>TM</sup> software from our website

Name	Cat. #	List Price
EFX Plus <sup>2</sup> for S4 0.7 RPM (115v)	5200	1,425.00
EFX Plus <sup>2</sup> for S4 0.7 RPM (230v)	5201	1,425.00
EFX Plus <sup>2</sup> for S4 12 RPM (115v)	5202	1,425.00
EFX Plus <sup>2</sup> for S4 12 RPM (230v)	5203	1,425.00
EFX Plus <sup>2</sup> for Selecon Pacific 0.7 RPM (115v)	5204	1,425.00
EFX Plus <sup>2</sup> for Selecon Pacific 0.7 RPM (230v)	5205	1,425.00
NEW EFX Plus for Strand SL 0.7 RPM (115v)	5206	1,425.00
NEW EFX Plus for Strand SL 0.7 RPM (230v)	5207	1,425.00

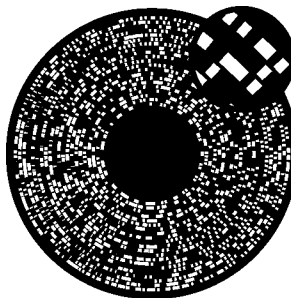


## EFX PLUS<sup>2</sup> EFFECTS DISKS

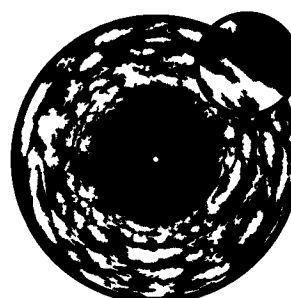
- Large format 14" (35.56 cm) effect disks
- May be used in varied combinations for striking effects
- 20 stock patterns (check our website as they become available)
- Custom patterns available



Digital Numbers  
5216



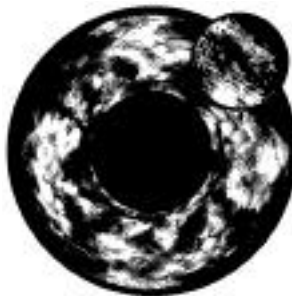
Digital Boxes  
5217



Medium Clouds  
5219



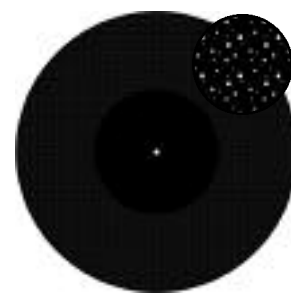
Mesh Puffy Clouds  
5220



Non-Mesh Puffy Clouds  
5221



Linear Clouds  
5222



Fine Snow  
5223

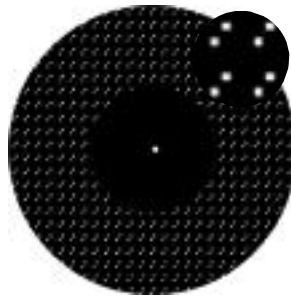


Medium Dot Breakup  
5224

# EFX PLUS<sup>2</sup> EFFECTS DISKS



Water  
5225



Sparse Dots  
5226



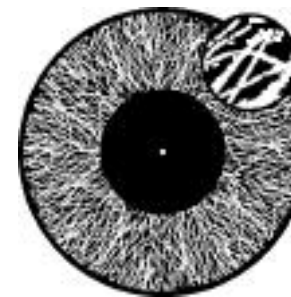
Driving Rain  
5227



Lobster Scope  
5228



Flicker Wheel  
5229



Thick Water  
5230



Flames  
5231



Sparse Flames  
5232

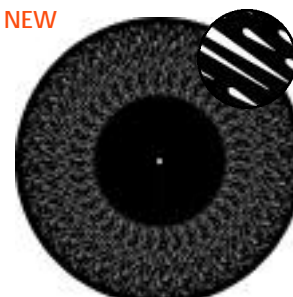


Waves  
5233



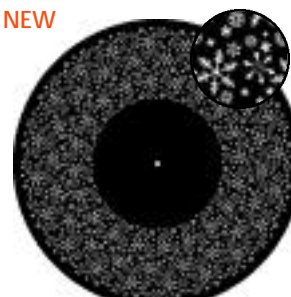
Rectangle Breakup  
5234

NEW



Droplet Rain  
5235

NEW



Stylistic Snow  
5236

NEW

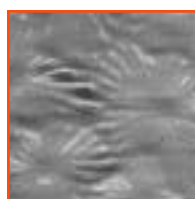
NEW

Name	Cat. #	List Price
Custom Metal Disk	5215	420.00
Digital Numbers	5216	120.00
Digital Boxes	5217	120.00
Medium Clouds	5219	120.00
Mesh Puffy Clouds	5220	120.00
Non-Mesh Puffy Clouds	5221	120.00
Linear Clouds	5222	120.00
Fine Snow	5223	120.00
Medium Dot Breakup	5224	120.00
Water	5225	120.00
Sparse Dots	5226	120.00
Driving Rain	5227	120.00
Lobster Scope	5228	120.00
Flicker Wheel	5229	120.00
Thick Water	5230	120.00
Flames	5231	120.00
Sparse Flames	5232	120.00
Waves	5233	120.00
Rectangle Breakup	5234	120.00
Droplet Rain	5235	120.00
Stylistic Snow	5236	120.00

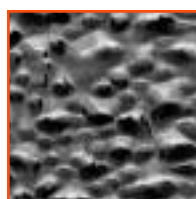


# EFX PLUS<sup>2</sup> ART GLASS

- 16 stock glass patterns
- Mount inside EFX Plus<sup>2</sup> housing
- Create unique effects



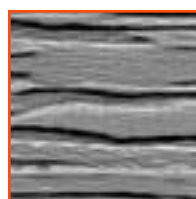
Florentine  
5251



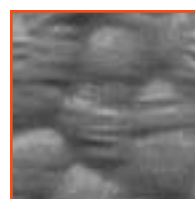
Cracked Ice  
5252



Cina  
5253



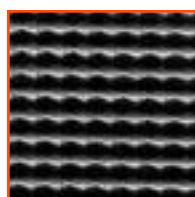
Wheat  
5254



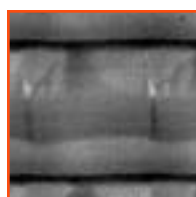
Oceanic  
5255



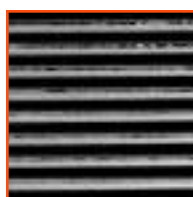
Wavy  
5256



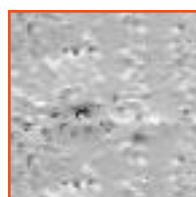
Waffle  
5257



Box  
5258



Linear  
5259



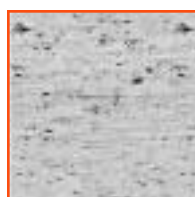
Monet  
5260



Hammered  
5262



Reed  
5263

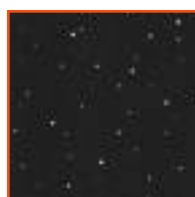


Noise  
5265

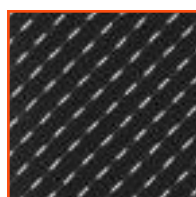


Husk  
5266

NEW



Snow  
5280



Rain  
5281

NEW

Name	Cat. #	List Price
Florentine	5251	24.90
Cracked Ice	5252	24.90
Cina	5253	24.90
Wheat	5254	24.90
Oceanic	5255	24.90
Wavy	5256	24.90
Waffle	5257	24.90
Box	5258	24.90
Linear	5259	24.90
Monet	5260	24.90
Hammered	5262	24.90
Reed	5263	24.90
Noise	5265	24.90
Husk	5266	24.90
Snow	5280	138.33
Rain	5281	138.33

Log on to  
[www.citytheatrical.com](http://www.citytheatrical.com)  
 for user manual and design ideas.

# BREAKAWAYS

- A complete range of sizes and shapes, including bottles, plates, vases, and window glass
- Easy and safe way to use breaking glass in productions
- Breaks into realistic "glass" pieces
- Bottles, glasses and plates sold in cases of six (6), pre-packed
- Flower vases sold in cases of two (2), pre-packed
- Window pane sold in cases of six (6), pre-packed



NEW

Name	Color	Cat.#	List Price
Beer Bottle, Long Neck (9" High)	Clear	3910	108.00
Beer Bottle, Long Neck (9" High)	Brown	3911	108.00
Beer Bottle, Long Neck (9" High)	Green	3912	108.00
Beer Bottle, Short Neck (7 <sup>3</sup> / <sub>4</sub> " High)	Clear	3913	108.00
Beer Bottle, Short Neck (7 <sup>3</sup> / <sub>4</sub> " High)	Brown	3914	108.00
Beer Bottle, Short Neck (7 <sup>3</sup> / <sub>4</sub> " High)	Green	3915	108.00
Whiskey Bottle (10 <sup>7</sup> / <sub>8</sub> " High)	Clear	3920	108.00
Whiskey Bottle (10 <sup>7</sup> / <sub>8</sub> " High)	Brown	3921	108.00
Whiskey Bottle (10 <sup>7</sup> / <sub>8</sub> " High)	Green	3922	108.00
White Wine Bottle (11 <sup>1</sup> / <sub>2</sub> " High)	Clear	3930	108.00
White Wine Bottle (11 <sup>1</sup> / <sub>2</sub> " High)	Brown	3931	108.00
White Wine Bottle (11 <sup>1</sup> / <sub>2</sub> " High)	Green	3932	108.00
Red Wine Bottle (11 <sup>1</sup> / <sub>4</sub> " High)	Clear	3940	108.00
Red Wine Bottle (11 <sup>1</sup> / <sub>4</sub> " High)	Brown	3941	108.00
Red Wine Bottle (11 <sup>1</sup> / <sub>4</sub> " High)	Green	3942	108.00
Coca-Cola Bottle (traditional, 7 <sup>3</sup> / <sub>4</sub> " High)	Green	3950	108.00
Medicine Bottle (traditional, 5 <sup>1</sup> / <sub>2</sub> " High)	Brown	3951	108.00
Champagne Bottle (11 <sup>7</sup> / <sub>8</sub> " High)	Green	3953	136.00
Salad Plate (8 <sup>1</sup> / <sub>8</sub> " diameter)	Clear	3960	108.00
Dinner Plate (10 <sup>1</sup> / <sub>2</sub> " diameter)	Clear	3961	136.00
Water Glass, Short (3 <sup>1</sup> / <sub>4</sub> " High)	Clear	3970	136.00
Water Glass, Tall (5 <sup>1</sup> / <sub>4</sub> " High)	Clear	3971	136.00
Wine Glass (6" High)	Clear	3972	168.00
Champagne Glass, Faceted (8 <sup>5</sup> / <sub>8</sub> " High)	Clear	3973	168.00
Champagne Glass, Fluted (8 <sup>1</sup> / <sub>2</sub> " High)	Clear	3974	168.00
Flower Vase (9 <sup>3</sup> / <sub>4</sub> " High x 5" Wide)	Clear	3980	146.00
Window Pane (8" x 10")	Clear	3990	168.00
Sample Box (1 each of Brown Whiskey, Green Red Wine, Clear White Wine, Green Beer Short Neck, Brown Beer Long Neck, and Coca-Cola Traditional)	Various	3999	108.00



JAUCHEM & MEEH INC.  
SPECIAL EFFECTS

BRAND

BREAK  
AWAYS

# PLASTIC WRAP

- Use instead of tie-line or tape to tie, wrap, or bundle cables, costumes, soft-goods, etc.
- Static plastic material wraps and clings to itself
- No adhesive - leaves no residue on cables, fabrics, etc.
- Easy to use, easy to unwrap and cut
- Can hold heavy cables and other weights indefinitely without tearing
- Dimensions per roll: 2" wide x 36 yards long (50mm x 3m)

NEW

Name	Cat.#	List Price
Plastic Wrap	3675	15.95



# SLIP WAY™

- Adhesive only on edges of the tape, eliminating any adhesive residue on cables
- Use to secure cables to any surface, such as floors and walls
- Textured back dramatically reduces the chances of slipping when walking over cable runs
- Available in yellow and black "Caution" tape or flat black
- Dimensions per roll: 6" wide x 32 yards long (152mm x 30m)

NEW

NEW

Name	Cat.#	List Price
Slip Way - Black	3650	33.40
Slip Way - Black & Yellow "Caution"	3655	37.25



# BLACKTAK™ LIGHT MASK FOIL

- Uses include: masking light spill, creating shadows, forming barndoors, adapting templates, and as a high temperature tape
- High temperature adhesive is heat resistant and won't melt
- Can be repositioned without leaving residue

Name	Cat. #	List Price
Blacktak - 2" roll	3600	32.95
Blacktak - 24" roll	3624	32.95

## Technical Specifications

2" Roll:	2" wide x 75 feet long (50mm x 22.86m)
24" Roll:	24" wide x 15 feet long (600mm x 4.5m)
Aluminum:	.002" (.050mm)
Adhesive thickness:	.0024" (.060mm)
Adhesive color:	Clear
Adhesive type:	Acrylic
Min application temperature:	50°F (10°C)
Working temperature:	-40°F to 482°F (-40°C to 250°C)





# TOP HATS

- Available with black flocked interior for maximum reduction of glare and spill
- Call for details and pricing of flocking and custom parts, finishes, and colors

Size/Model	A	B	C	D	Cat. #	List Price
PAR 16	2 <sup>7</sup> / <sub>8</sub> "	2 <sup>7</sup> / <sub>8</sub> "	2"	2"	2455	10.00
PAR 20	3 <sup>1</sup> / <sub>4</sub> "	3 <sup>1</sup> / <sub>4</sub> "	2 <sup>1</sup> / <sub>2</sub> "	2 <sup>1</sup> / <sub>2</sub> "	2456	11.00
3" Fresnel	3 <sup>3</sup> / <sub>4</sub> "	3 <sup>3</sup> / <sub>4</sub> "	3"	3"	2457	10.00
3 <sup>1</sup> / <sub>2</sub> " Ellipsoidal	4 <sup>1</sup> / <sub>8</sub> "	4 <sup>1</sup> / <sub>8</sub> "	3 <sup>1</sup> / <sub>2</sub> "	3 <sup>1</sup> / <sub>2</sub> "	2454	12.90
S4, SL, SH, PC*	6 <sup>1</sup> / <sub>4</sub> "	6 <sup>1</sup> / <sub>4</sub> "	5"	5"	2450	16.40
Short S4, SL, SH, PC*	6 <sup>1</sup> / <sub>4</sub> "	6 <sup>1</sup> / <sub>4</sub> "	3"	5"	2440	16.40
6" Ellipsoidal	7 <sup>1</sup> / <sub>2</sub> "	7 <sup>1</sup> / <sub>2</sub> "	6"	6"	2400	17.80
S4 PAR**	7 <sup>1</sup> / <sub>2</sub> "	7 <sup>1</sup> / <sub>2</sub> "	6"	6 <sup>3</sup> / <sub>4</sub> "	2480	17.80
Short S4 PAR**	7 <sup>1</sup> / <sub>2</sub> "	7 <sup>1</sup> / <sub>2</sub> "	3"	6 <sup>3</sup> / <sub>4</sub> "	2481	17.80
S4 PAR Round Frame**	7 <sup>1</sup> / <sub>2</sub> "	7 <sup>1</sup> / <sub>2</sub> "	6"	6 <sup>3</sup> / <sub>4</sub> "	2490	21.50
Short S4 PAR Round Frame**	7 <sup>1</sup> / <sub>2</sub> "	7 <sup>1</sup> / <sub>2</sub> "	3"	6 <sup>3</sup> / <sub>4</sub> "	2491	21.50
PAR 64 (Altman and L&E)	10"	10"	8"	8"	2453	21.60
Short PAR 64 (Altman and L&E)	10"	10"	3"	8"	2445	21.60
S4 10', SL 10'	12"	12"	10"	10"	2452	29.80
S4 5'	14"	14"	12"	12"	2451	51.30
SL 5'	16"	16"	14"	14"	2458	61.60

\*Source Four, Strand SL, Shakespeare and Pacific ellipsoids (19-50')

\*\*These accessories can also be used with S4 PARNel and S4 Zoom fixtures

Note: We do not recommend the use of 5" long accessories in 50' lens tubes. Loss of light will occur.



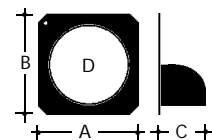
# HALF TOP HATS

Size/Model	A	B	C	D	Cat. #	List Price
Par 16	2 <sup>7</sup> / <sub>8</sub> "	2 <sup>7</sup> / <sub>8</sub> "	2"	2"	2465	10.00
Par 20	3 <sup>1</sup> / <sub>4</sub> "	3 <sup>1</sup> / <sub>4</sub> "	2 <sup>1</sup> / <sub>2</sub> "	2 <sup>1</sup> / <sub>2</sub> "	2466	11.00
3" Fresnel	3 <sup>3</sup> / <sub>4</sub> "	3 <sup>3</sup> / <sub>4</sub> "	3"	3"	2467	10.00
3 <sup>1</sup> / <sub>2</sub> " Ellipsoidal	4 <sup>1</sup> / <sub>8</sub> "	4 <sup>1</sup> / <sub>8</sub> "	3 <sup>1</sup> / <sub>2</sub> "	3 <sup>1</sup> / <sub>2</sub> "	2464	12.90
S4, SL, SH, PC*	6 <sup>1</sup> / <sub>4</sub> "	6 <sup>1</sup> / <sub>4</sub> "	5"	5"	2460	16.40
Short S4, SL, SH, PC*	6 <sup>1</sup> / <sub>4</sub> "	6 <sup>1</sup> / <sub>4</sub> "	3"	5"	2441	16.40
6" Ellipsoidal	7 <sup>1</sup> / <sub>2</sub> "	7 <sup>1</sup> / <sub>2</sub> "	6"	6"	2420	17.80
S4 PAR**	7 <sup>1</sup> / <sub>2</sub> "	7 <sup>1</sup> / <sub>2</sub> "	6"	6 <sup>3</sup> / <sub>4</sub> "	2482	17.80
S4 PAR Round Frame**	7 <sup>1</sup> / <sub>2</sub> "	7 <sup>1</sup> / <sub>2</sub> "	6"	6 <sup>3</sup> / <sub>4</sub> "	2492	21.50
PAR 64 (Altman and L&E)	10"	10"	8"	8"	2463	21.60
S4 10', SL 10'	12"	12"	10"	10"	2462	29.80
S4 5'	14"	14"	12"	12"	2461	51.30
SL 5'	16"	16"	14"	14"	2468	61.60

\*Source Four, Strand SL, Shakespeare and Pacific ellipsoids (19-50')

\*\*These accessories can also be used with S4 PARNel and S4 Zoom fixtures

Note: We do not recommend the use of 5" long accessories in 50' lens tubes. Loss of light will occur.



# COLOR EXTENDERS

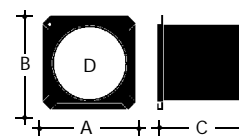
- Saves both time and aggravation by preventing gel burnout
- Fabricated from durable cold rolled steel with hemmed edges
- Gel materials are placed in slot at front of unit, forward of the fixture's focal plane
- Black powdercoat finish

Size/Model	A	B	C	D	Cat. #	List Price
S4, SL, SH, PC*	6 1/4"	6 1/4"	5"	5"	2470	24.00
Short S4, SL, SH, PC*	6 1/4"	6 1/4"	3"	5"	2471	24.00
6" Ellipsoidal	7 1/2"	7 1/2"	6"	6"	2410	26.30
Short 6" Ellipsoidal	7 1/2"	7 1/2"	3"	6"	2430	26.30
S4 PAR**	7 1/2"	7 1/2"	6"	6 3/4"	2483	26.30
Short S4 PAR**	7 1/2"	7 1/2"	3"	6 3/4"	2483A	26.30
PAR 64 (Altman & L&E)	10"	10"	5"	8"	2473	28.80

\*Source Four, Strand SL, Shakespeare and Pacific ellipsoids (19-50')

\*\*These accessories can also be used with S4 PARNel and S4 Zoom fixtures

Note: We do not recommend the use of 5" long accessories in 50' lens tubes. Loss of light will occur.

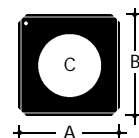


# DONUTS

- Used to help bring templates into perfect sharpness
- Fabricated from light gauge steel
- Durable black powdercoat finish

Size/Model	A	B	C	Cat. #	List Price
S4, SL, SH, PC*	6 1/4"	6 1/4"	3 3/16"	2250	6.85
6" Ellipsoidal	7 1/2"	7 1/2"	3"	2200	7.90
S4 10', SL 10'	12"	12"	6"	2252	10.80
S4 5'	14"	14"	7"	2251	13.20
SL 5'	16"	16"	7"	2258	16.80

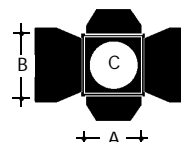
\*Source Four, Strand SL, Shakespeare, and Pacific ellipsoids (19-50')



# BARNDOOR

- For use with Source Four PAR and PARNel fixtures
- Extra large aluminum leaves for controlling light spill
- Full 6 3/4" center hole
- Built in 2" color extender
- Round rear frame for easy rotation

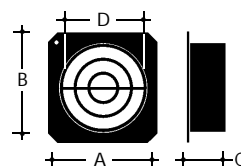
Size/Model	A	B	C	Cat. #	List Price
S4 PAR/PARNel Barndoor	7 1/2"	7 1/2"	6 3/4"	2488	58.70



# CONCENTRIC RING

- Offers full control of stray beams and spill
- Fabricated from light gauge steel with hemmed edges
- Comparable function to a full 6 inch Top Hat
- Only 2 inches long
- Black powdercoat finish

Size/Model	A	B	C	D	Cat. #	List Price
S4 PAR/PARNel Concentric Ring	7 1/2"	7 1/2"	2"	6 3/4"	2484	35.50

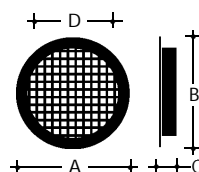


# EGG CRATE LOUVER

- Prevents lens glare; provides 45° cutoff angle
- Designed for architectural applications with Source Four™ PAR or PARNel fixtures
- Black powdercoat finish
- Round shape for clean appearance
- 1/2" by 1/2" grid, 1/2" deep
- Fabricated from light gauge steel

Size/Model	A	B	C	D	Cat. #	List Price
S4 PAR/PARNel Egg Crate Louver	7 1/2"	7 1/2"	1/2"	6 3/4"	2485	42.35

Note: We can create custom Egg Crate and Hexcel Louvers for any lighting fixture - Call for information



# ADAPTER

- 6 1/4" to 7 1/2" unit allows use of older accessories (color wheels, scrollers, etc.) with Source Four™, Strand SL, Shakespeare, or Selecon Pacific ellipsoidal fixtures

Name	Cat. #	List Price
6 1/4" to 7 1/2" Adapter	1251	21.45

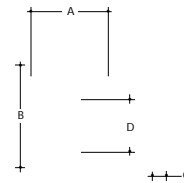




# DROP-IN IRISES

- Offers precise, smooth control of beam size
- Fits easily into most standard theatrical ellipsoidals
- Specially made leaves are tempered and heat resistant to over 1000°F

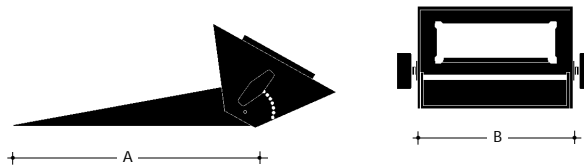
Name	A	B	C	D	Cat. #	List Price
Source Four Iris	4 <sup>25/32</sup> "	5 <sup>7/16</sup> "	1/2"	3"	2180	124.50
Source Four Jr. Iris	3 <sup>1/8</sup> "	4 <sup>9/32</sup> "	1/2"	2 <sup>5/16</sup> "	2185	124.50
Strand SL Iris	4 <sup>3/16</sup> "	5 <sup>3/16</sup> "	1/2"	3"	2186	124.50
Selecon Pacific Iris	4 <sup>31/64</sup> "	5 <sup>63/64</sup> "	1/2"	3"	2187	124.50



# BEAM BENDER

- Attaches easily to any Source Four™, Strand SL, Shakespeare, or Selecon Pacific ellipsoidal for flexibility in fixture placement
- Ideal for shooting around scenery or other obstructions
- Adjustable mirror for controlling angle and spread of beam
- Especially useful for dance designers needing maximum light output at floor level

Name	A	B	Cat. #	List Price
Beam Bender 6 <sup>1/4</sup> "	12"	7"	1400	92.00

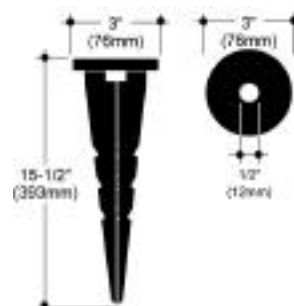


# FIXTURE MOUNTING SPIKE

- Use to mount outdoor lighting fixtures in the ground
- Durable, weather resistant steel
- Includes standard 1/2" bolt

NEW

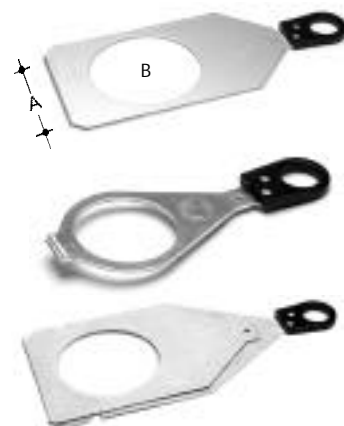
Name	Cat. #	List Price
Fixture Mounting Spike	1480	82.50



# SANDWICH HOLDERS

- Aluminum construction acts as a heat sink to minimize pattern warpage
- Large heat resistant ring pulls

Name	A	B	Cat. #	List Price
S4 "A"	311/16"	33/16"	2150	7.35
S4 "B"	311/16"	23/4"	2160	7.35
S4 Jr. "M"	211/16"	25/32"	2165	7.35
SL "B"	43/16"	23/4"	2144	8.33
360Q/Shakespeare	35/16"	23/4"	2120	8.95
Colortran Style (5/50 Series)	4"	31/16"	2190	13.50
Juliat "A"	411/16"	33/16"	3500	24.95
Juliat "B"	411/16"	23/4"	3501	24.95



S4 "A"  
#2150



S4 "B"  
#2160



S4 Jr. "M"  
#2165



SL "B"  
#2144



360Q/SH  
#2120



Colortran  
#2190



Juliat "A"  
#3500



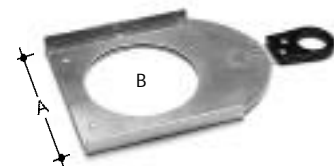
Juliat "B"  
#3501

# GLASS HOLDERS

- Will hold either glass or metal patterns

Name	A	B	Glass OD	Cat. #	List Price
S4 "A" (iris slot)	411/16"	33/16"	82mm	2171	21.65
S4 "B"	311/16"	23/4"	82mm	2170	10.00
NEW S4 86mm OD glass*	311/16"	23/4"	86mm	2173	10.00
S4 "B" (iris slot)	411/16"	23/4"	82mm	2172	19.00
S4 Jr. "M"	211/16"	25/32"	82mm	2175	10.00
SL "B"	43/16"	23/4"	82mm	2146	10.00
NEW SL 86mm OD glass*	43/16"	23/4"	86mm	2147	10.00
360Q/Shakespeare	35/16"	23/4"	82mm	2130	10.00
Strand "B" (also holds metal)	31/2"	3	82mm	2140	10.50
Juliat "A"	411/16"	33/16"	82mm	3502	26.95
Juliat "B"	411/16"	23/4"	82mm	3503	26.95
NEW Selecon Pacific 86mm OD glass*	41/2"	227/32"	86mm	2115	10.00

\* Fits Rosco 86mm "Std B" size glass



S4 "A" (Iris)  
#2171



S4 "B"  
#2170 & 2173



S4 "B" (Iris)  
#2172



S4 Jr. "M"  
#2175



SL "B"  
#2146 & 2147



360Q/SH  
#2130



Strand Old Style  
#2140



Juliat "A"  
#3502



Juliat "B"  
#3503

# WEDGELOCK TEMPLATE HOLDER

- Unique design allows for careful rotation and precise alignment of templates
- Aluminum construction with extended handle and insulated grip
- May be rotated back and forth through a 40° range

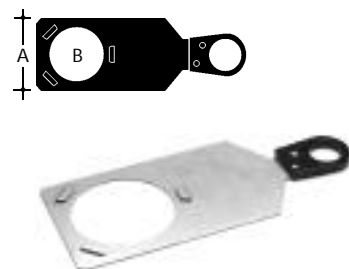
Name	A	B	Cat. #	List Price
Wedglock Template Holder (fits Altman 360Q/Shakespeare)	3 <sup>5</sup> / <sub>16</sub> "	2 <sup>5</sup> / <sub>8</sub> "	2100	19.00



# TABBED TEMPLATE HOLDER

- Made to fit "B" sized patterns
- Aluminum construction with insulated grip

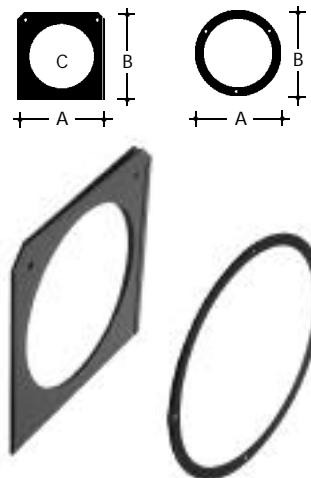
Name	A	B	Cat. #	List Price
Tabbed Template Holder (fits Altman 360Q/Shakespeare)	3 <sup>5</sup> / <sub>16</sub> "	2 <sup>5</sup> / <sub>8</sub> "	2110	8.95



# COLOR FRAMES

- Fabricated from durable cold rolled steel with hemmed edges
- Tough black powdercoat finish
- Round style PAR/PARNeI units are available for architectural use

Name	A	B	C	Cat. #	List Price
S4, SL, SH, PC*	6 <sup>1</sup> / <sub>4</sub> "	6 <sup>1</sup> / <sub>4</sub> "	5"	2350	5.25
6" Ellipsoidal	7 <sup>1</sup> / <sub>2</sub> "	7 <sup>1</sup> / <sub>2</sub> "	6"	2300	5.80
S4 PAR**	7 <sup>1</sup> / <sub>2</sub> "	7 <sup>1</sup> / <sub>2</sub> "	6 <sup>3</sup> / <sub>4</sub> "	2487	6.10
S4 PAR (Round)**	7 <sup>1</sup> / <sub>2</sub> "	7 <sup>1</sup> / <sub>2</sub> "	6 <sup>3</sup> / <sub>4</sub> "	2497	8.00
City Ground Cyc	8 <sup>3</sup> / <sub>4</sub> "	13"	-	2321	10.80
PAR 64	10"	10"	8"	2322	8.95
S4 10', SL 10'	12"	12"	10"	2328	13.40
S4 5'	14"	14"	12"	2329	18.70
City Sky Cyc	15 <sup>1</sup> / <sub>2</sub> "	15 <sup>7</sup> / <sub>8</sub> "	-	2330	17.00
City Far Cyc	14 <sup>3</sup> / <sub>4</sub> "	15 <sup>1</sup> / <sub>2</sub> "	-	2338	31.40
SL 5'	16"	16"	14"	2348	24.50



\*Source Four, Strand SL, Shakespeare and Pacific ellipsoids (19-50')

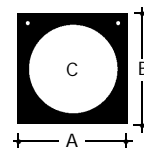
\*\*These accessories can also be used with S4 PARNeI and S4 Zoom fixtures



# MAINFRAMES®

- Lightweight, flameproof, black fiberboard color frames
- Simple, safe and inexpensive
- Secures with a single heavy-duty staple
- Available in a wide range of sizes

Name	A	B	C	Cat. #	List Price
"Inkie"	3 3/4"	3 3/4"	3"	2352	1.75
"Mini Strip" (2 hole style)	3 5/16"	4 11/16"	-	2358	1.75
"Mini Strip" (rect. opening)	3 5/16"	4 11/16"	-	2359	1.75
Zip Strip	4 3/4"	4 3/8"	-	2360	1.75
R40	5 3/4"	6 3/4"	5"	2362	2.30
S4, SL, SH, PC*	6 1/4"	6 1/4"	5"	2364	1.80
6" Ellipsoidal	7 1/2"	7 1/2"	6"	2366	1.95
S4 PAR**	7 1/2"	7 1/2"	6 3/4"	2367	2.75
PAR 64	10"	10"	8"	2376	2.75
S4 10', SL 10',	12"	12"	10"	2382	9.15
S4 5'	14"	14"	12"	2383	11.00
100 mm	100mm	100mm	80mm	2385	1.75
125mm	125mm	125mm	100mm	2387	1.75
150mm	150mm	150mm	125mm	2389	1.75
185mm	185mm	185mm	150mm	2391	1.95
230mm	230mm	230mm	165mm	2393	2.60
245mm	245mm	205mm	205mm	2395	2.75



\*Source Four, Strand SL, Shakespeare and Pacific ellipsoids (19-50')

\*\*These accessories can also be used with S4 PARNel and S4 Zoom fixtures

## FOLLOW SPOT YOKE

- Ball bearing pan axis and glide tilt axis for smooth operation
- Cantilever design for aiming straight down when mounted to bridge or truss
- Adjustable balance for use with various lenses or accessories
- Positive locking knobs

Name	Cat. #	List Price
Follow Spot Yoke	1440	535.00
Balancer for Follow Spot Yoke	1431	261.00
Balancer Wrench	1435	24.95



## SWIVEL YOKES

- Makes aligning templates and shutter cuts easier
- Available for all Source Four fixtures
- Allows fixtures to be mounted off-axis such as on an arched or diagonal support pipe.

Name	Cat. #	List Price
Swivel Yoke for S4	1220	47.95
Swivel Yoke for S4 Jr.	1222	47.95
Swivel Yoke for S4 PAR/PARNel	1224	47.95



# CABLE HOOK

- Designed to help manage and support multi-cable runs with truss systems
- Lightweight aluminum construction
- Fits 1 1/2" to 2" truss pipe

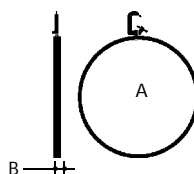
Name	Cat. #	List Price
Cable Hook	1330	12.00



# SCENERY BUMPER

- 18" diameter rings attach to fixture pipes with "C" clamps
- Protects fixtures from flying drops and passing scenery
- Saves refocusing time
- Includes "C" clamp
- 3/16" steel construction

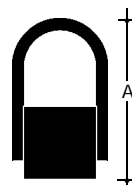
Name	A	B	Cat. #	List Price
Scenery Bumper	18"	2"	1340	70.00



# BOOM TIE OFF

- Fits 1 1/2" pipe
- Rugged 1/2" steel rod welded to both sides of cap to withstand heavy lifting

Name	A	Cat. #	List Price
Boom Tie Off	5"	1310	26.30



# 10" BOOM BASE

- 6 lb. fixture base for use on floor or table
- 1/2" tapped center hole for fixture mounting
- Black finish

Name	Cat. #	List Price
Boom Base	4300	29.60



# CANDLE LITE UNLIMITED™

## FLICKER CANDLES

- Simulates the natural flicker and movement of a candle flame
- Operates on either 9V DC or a remote power supply
- Three bulb design encased in a translucent shell
- Logic circuit built in each candle
- Dimmable
- Extremely effective when used in large groupings for architectural applications

**Candle Pak™** - Features all of the most frequently requested Candle Lite products, all in one kit.

NEW

NEW

Name	Cat. #	List Price
Candle Kit	3400	39.74
Candle Kit 0-10V	3410	44.16
Candle Stick* (9V battery adapter included)	3420	50.78
Candle Holder*	3425	12.00
AC Adapter for one candle*	3430	11.37
AC Adapter for six candles	3431	36.50
Candle Pak	3440	68.35

\*Included in Candle Pak™



**Candle Lite™**

Log on to  
[www.citytheatrical.com](http://www.citytheatrical.com)  
for more detailed information and frequently asked questions.

## "C CLIP" TRUSS PROTECTOR™

- Designed to protect expensive truss and lighting battens from damage caused by fixture clamps
- Provides a sacrificial barrier which absorbs indentations, snaps onto 2" members and is easy to remove

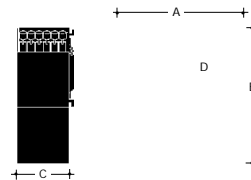
Name	Cat. #	List Price
"C Clip" Truss Protector, 2" (white)	1370	2.42
"C Clip" Truss Protector, 2" (black)	1371	2.42



# DROP-IN BOOMERANG

- Converts any fixture with a 6 1/4" color frame into a compact portable follow spot
- Holds six colors
- Reversible for either right or left handed operation
- Fits Source Four™, Strand SL, Shakespeare, or Selecon Pacific ellipsoidals
- Drops into color frame slot of fixtures using 19' to 50' lenses
- Large easy grip knobs
- Lightweight aluminum construction with black finish

Size/Model	A	B	C	D	Cat. #	List Price
Drop-in Boomerang	11"	11"	4"	5 1/2"	1410	262.50



# FOLLOW SPOT HANDLE

- Allows operator to easily control the fixture movement
- Attaches easily to the rear of a Source Four™ ellipsoidal

Name	Cat. #	List Price
Follow Spot Handle	1360	40.95



# BOOMERANG HANDLE

- Counterbalances the weight of DROP-IN BOOMERANG for smoother operation
- Attaches easily to the rear of a Source Four™ ellipsoidal

Name	Cat. #	List Price
Boomerang Handle	1415	62.95



# BALANCER

- Simplifies positioning of front-heavy fixture configurations (when using 5' or 10' lenses or other accessories)
- Adjustable star nut for changing spring pressure
- Eliminates sudden front end falling when locking knob is released
- Attaches easily to the side of fixture (without disassembly)

Name	Cat. #	List Price
Balancer for S4	1430	261.00
Balancer Wrench	1435	24.95





# AQUAFOG 3300™

- Award winning lightweight, portable dry ice fog machine holds 28 gallons of water and 75 lbs. of dry ice
- Non-corroding thermoplastic tank features an extra large access lid for easy loading with integral casters for transport
- Electrical system features circuit breakers, indicator lights for water temperature and heating element status, low-water cutout protection and an adjustable sensing circuit to maintain temperature over extended use periods.

Name	Cat. #	List Price
Aquafof 3300 120v	3300	3262.00
Aquafof 3300 230v	3303	3262.00



## SPECIFICATIONS

### Tank

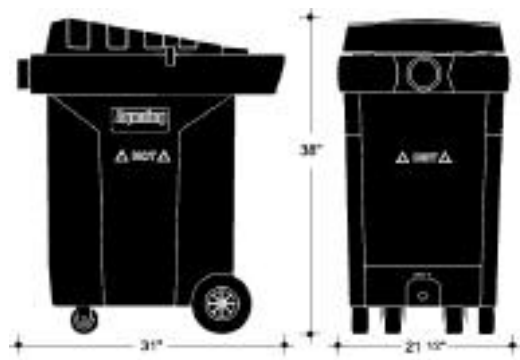
Material:	High temperature plastic polymer
Dimensions:	21 <sup>1</sup> / <sub>2</sub> " x 31" x 38" (including casters) (546mm x 787mm x 965mm)
Water capacity:	28 gallons (106 litres)
Ice capacity:	75 lbs. (34 kg.)
Casters:	3 <sup>1</sup> / <sub>2</sub> " (88.9mm) swivel front, 8" (203mm) fixed rear
Hose vent:	4" (101.6mm) molded into tank
Fill Door:	20" x 30" (508mm x 762mm)
Weight empty:	115 lbs. (52kg.)
Shipping weight:	140 lbs. (59kg.)
Weight fully loaded:	455 lbs. (208.19kg.)

### Plumbing

Pump:	Stainless steel 10GPM (37.85 litres/min.)
Fittings:	All stainless, brass or high temperature plastic

### Electrical

Voltage:	120v or 230v
Heating elements:	120v 1650 watt; 230v 3000 watt (two) screw in
Thermostat:	Adjustable automatic control (100°F-160°F) (38°C-71°C)
Overtemperature:	175°F (79°C) cutout, manual reset
Low water cutout:	Turns off heaters when water is low
Blower:	240 CFM axial (6.799 CMM)
Circuit breakers (Type):	20 amp on heating element 2 amp (lighted) on fan & pump



Log on to

[www.citytheatrical.com](http://www.citytheatrical.com)

for more dry ice fog information and frequently asked questions

# SS6000™ DRY ICE FOGGER

- Extra large capacity dry ice fog machine holds over 50 gallons of water and 150 lbs of dry ice
- Rugged construction features a 16-gauge stainless steel tank, all brass plumbing, integral dolly with large casters
- Electrical system features circuit breakers, indicator lights for water temp and heating element status, low water cutout, and an adjustable temperature regulating circuit.

Name	Cat. #	List Price
SS6000 Dry Ice Fogger	3100	7714.00



## SPECIFICATIONS

### Tank

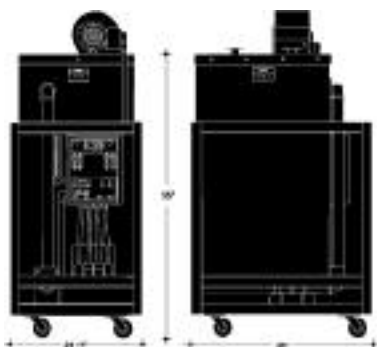
Material:	.062" stainless steel, TIG welded, black texture paint
Dimensions:	24" x 23" x 42" (tank only) 24 1/2" x 33" (OD of dolly) x 55" (floor to tank top)
Water capacity:	52 gallons
Ice capacity:	150 lbs.
Casters:	5" swivel
Hose vent:	6" PVC pipe flange (6.625" ID, 7" OD)
Fill Door:	16" x 10" fully gasketed
Weight empty:	330 lbs. (149 kg.)
Shipping weight:	360 lbs. (163 kg.)
Weight fully loaded:	910 lbs. (412 kg.)

### Plumbing

Pump:	Stainless steel 19GPM
Material:	All 1 1/4" brass pipe, fittings and valves

### Electrical

Heating elements:	240v 3000 watt, two per tank
Access:	Screw-in, easily accessible through lower electrical box, spare element built in
Thermostat:	Adjustable automatic control
Over temperature:	195°F (89°C)
Low water cutout:	Turns off heaters when water is low
Blower:	120v, 465 CFM- fused 10A
Circuit breakers-Type:	220v 20A
Fuses:	10A for pump and fan circuits
Connectors:	Two L620 twistlocks feed heating elements; one each 2PG for fan and pump



Log on to  
[www.citytheatrical.com](http://www.citytheatrical.com)  
for more dry ice fog information and  
frequently asked questions

# FOG ACCESSORIES

- A variety of accessories are available to extend the effectiveness of your fog installation.

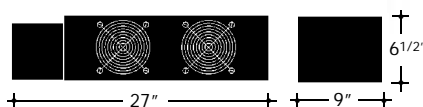
Name	Cat. #	List Price
4" Hose (per 25 foot)	3301	41.90
7" Hose (per 25 foot)	3101	305.80
4" Coupling	3311	17.50
6" Coupling	3111	26.15
4" Wye	3312	27.90
6" Wye	3112	48.10



# TUBULAR RIPPLE PROJECTOR

- Creates the effect of sunlight reflecting off of rippling water
- Uses two 1000 watt tubular bulbs shining through a perforated rotating cylinder
- Can be placed at the base of a drop or piece of scenery
- Two four inch fans provide cooling

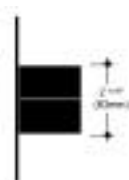
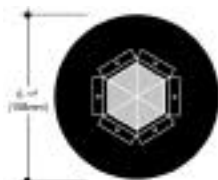
Name	Cat. #	List Price
Tubular Ripple Projector	4150	2750.00



# IMAGE MULTIPLEXER™

- A multiprism lighting accessory for theatrical ellipsoidals
- Drops into color frame slot (6 1/4")
- Multiplies image six times
- Use with static or moving gobos for stunning multi-image rotating effects

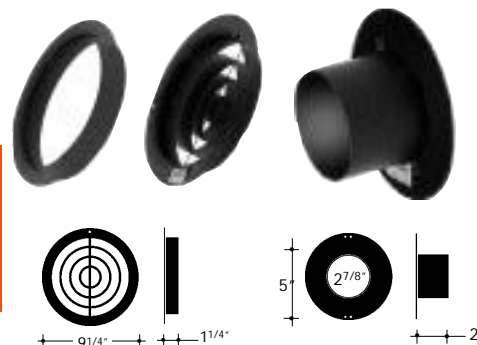
Name	Cat. #	List Price
Image Multiplexer	1450	89.95



# MARTIN ACCESSORIES

- Reduce viewing angle to the lens allowing fixture placement closer to the sight line
- Attach to the lighting fixtures with spring clips

Name	Cat. #	List Price
MAC 500 Top Hat	2740	50.35
MAC 600 Spill Ring	2750	52.90
MAC 600 Concentric Ring	2755	71.80



## CYBER SOUND BAFFLE

- Reduces fan noise by 7db for a 70% sound reduction to the listener
- Easily attaches with two wide velcro straps

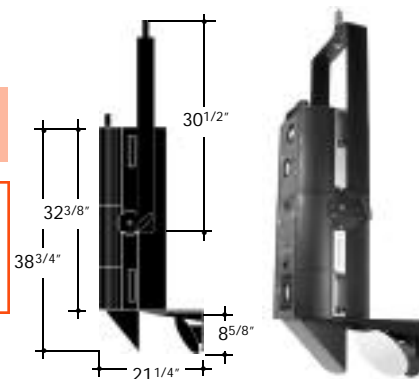
Name	Cat. #	List Price
Cyber Sound Baffle	2520	357.60



## CYBER MIRROR

- Allows a Cyberlight™ to be hung straight down reducing its footprint in the light plot

Name	Cat. #	List Price
Cyber Mirror	2510	900.00
Cyber Yoke	2511	300.00



## CYBER ADAPTER RING

- Permits use of metal gobos in glass-only Cyberlights™

Name	Cat. #	List Price
Cyber Adapter Ring	2515	6.00



## STUDIO COLOR™ SPILL RING

- Eliminates lens aberration caused by light bouncing off the ridge of the Studio Color™ lens
- Weighs 3 oz. and protrudes only 1" from the front of the fixture

Name	Cat. #	List Price
Studio Color Spill Ring	2530	40.30



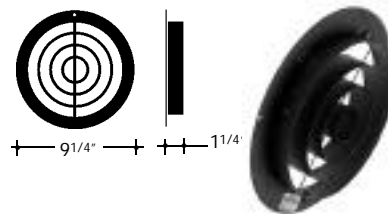


## VL5™ SPILL RING

VARI\***LITE**®

- Used with the lens reversed, the spill ring sits inside the luminaire and does not add to the unit's overall length
- Cleans up stray light bouncing off lens ridge and reduces viewing angle to the lens

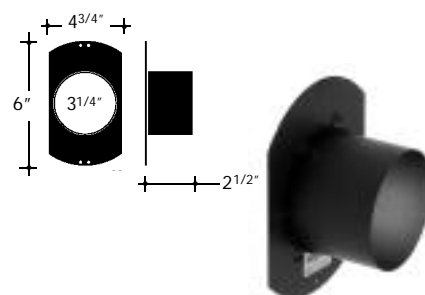
Name	Cat. #	List Price
VL5 Spill Ring	2645	71.80



## VL6™ FULL TOP HAT

- Reduces viewing angle to the lens, allowing fixture placement closer to edge of sight line
- Does not affect beam
- Fabricated from aluminum, powdercoated black, and attaches to fixture with built in spring clips and safety cable

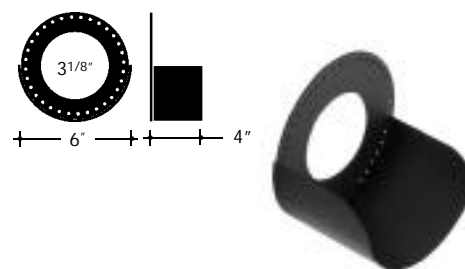
Name	Cat. #	List Price
VL6 Full Top Hat	2650	52.90



## VL6™ HALF TOP HAT

- Eliminates bounce back from inside of top hat cylinder
- May be rotated for maximum effectiveness in reducing lens glare
- Powdercoated black aluminum with built-in spring clips and safety cable

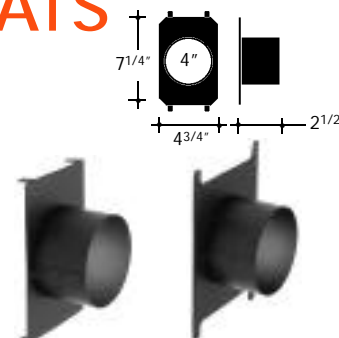
Name	Cat. #	List Price
VL6 Half Top Hat	2651	52.90



## VL2C™, VL4™ FULL TOP HATS

- Reduces viewing angle to the lens allowing fixture placement closer to the sight line
- Designed for attachment using fixture's body panel screws
- No safety cable required
- Does not affect beam

Name	Cat. #	List Price
VL2C Full Top Hat	2635	40.30
VL4 Full Top Hat	2640	40.30



## VL2C™, VL4™ THREE POINT HANGERS

- Allows solid attachment to house or truss pipe
- Helps maintain fixture position and focus when "swapping out" is required

Name	Cat. #	List Price
VL2C 3-Point Hanger	2680	160.00
VL4 3-Point Hanger	2681	160.00



# LIGHTWRIGHT™ SOFTWARE

- LIGHTWRIGHT™, written by professional designer John McKernon, is the quintessential tool for tracking all aspects of selecting and arranging, numbering and comparing, assigning and footnoting lighting paperwork.
- Now available in one Macintosh and Microsoft Windows 95/98/NT version
- User definable text columns - worknotes, dimensions, etc.
- User definable numerical columns
- Ability to classify instrument by type - light, moving light, accessory power, etc.
- "External ID" to match program to AutoCad or VectorWorks
- Stores information for up to 5,000 lights covering 1,000 different purposes in 1,000 hanging positions.
- Channel numbers can range from 0 to 3,000 with an optional "suffixing" capability
- 50 different layouts for various printouts
- Comes complete with manual on CD
- CD includes Beamwright™ for recommending lights

Name	Cat. #	List Price
Individual User Lightwright 3	3800	449.95
Organizational User Lightwright 3 (six CD's & registration)	3810	899.95
Individual Upgrade*	3820	174.50
Organizational Upgrade (six CD's & registration)*	3830	349.00

\*Upgrades must be in the same name and serial number as the original buyer.

To purchase  
Lightwright 3,  
contact your local  
CTI dealer.



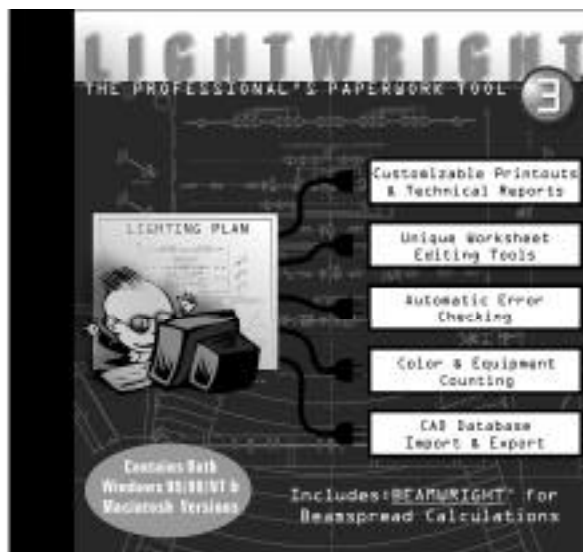
## System Requirements

### Microsoft Windows®

- Microsoft Windows® 95, 98, NT 3.5 or higher
- A CD-ROM drive (for installation only)
- 32 MB of physical RAM
- A hard drive with at least 8MB of available disk space

### Apple Macintosh®

- Any Mac OS computer running System 7.1 or higher
- A CD-ROM drive (for installation only)
- 32 MB of physical RAM
- A hard drive with at least 3MB of available disk space



# **CITY THEATRICAL**

**I N C**

752 EAST 133RD STREET BRONX, NY 10454  
718/292/7932 • 800/230/9497 • FAX: 718/292/7482

email: [info@citytheatrical.com](mailto:info@citytheatrical.com)

web: <http://www.citytheatrical.com>

PRSRT STD  
U.S. POSTAGE PAID  
NEW ROCHELLE, NY  
PERMIT #1484