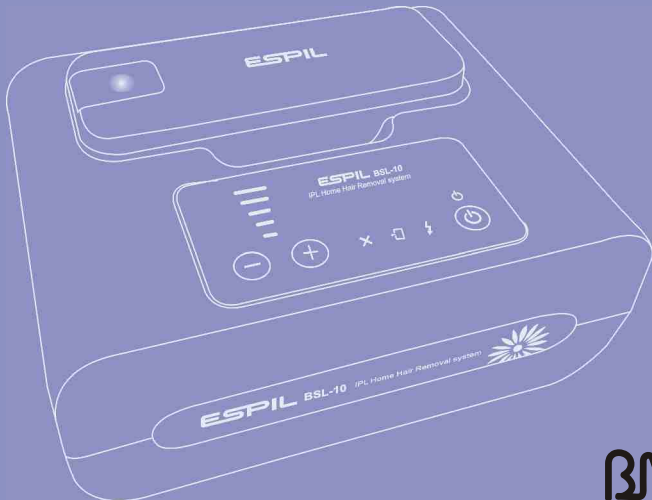


Epil BSL-10

# User Guide

**ESPIL**™  
BSL-10  
*IPL Home Hair Removal system*



**BMB**  
MEDICAL



# Espil BSL-10 Instructions for use

For safety and to ensure quality results, read the User Manual completely before starting to use the Espil BSL-10. We recommend reading this instruction manual carefully prior to each use or when the unit is broken.

Espil BSL-10 can be used safely, easily and effectively in a typical home environment without the need of a prescription. Please read all warnings and safety precautions before use, and strictly follow them when using Espil BSL-10.

## Skin Tone Chart

Select the color below that best matches the color of the skin on the area you are treating. Don't use Espil BSL-10 on naturally dark skin. Treating dark skin with Espil BSL-10 can result in adverse effects such as burns, blisters, and skin color changes. (hyper or hypo-pigmentation)

<i>Intended for these Skin Tones</i>	<i>Recommendable power level</i>
White	→ 1 - 5 level
Ivory	→ 1 - 5 level
Beige	→ 1 - 4 level
Light Brown	→ 1 - 3 level
Medium Brown 	→ DO NOT USE
Dark Brown/Black 	→ DO NOT USE

# Table of Contents

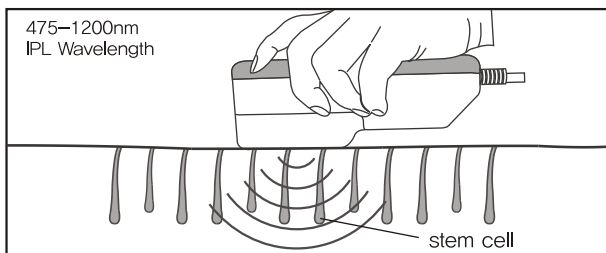
1. What is Espil BSL-10 .....	4
2. Warnings & Safety information .....	5
3. Precautions .....	7
4. When not to use .....	9
5. Package Contents and Device Description .....	10
6. Uses for Espil BSL-10 .....	11
7. Quick Guide .....	14
8. Replacing the Lamp Cartridge .....	15
9. Plan your Espil BSL-10 hair removal for best results .....	16
10. About Skin Color Sensor .....	18
11. Frequently asked questions .....	18
12. Cleaning and disposing .....	21
13. Troubleshooting .....	22
14. Performance environment .....	22
15. Specifications .....	23
16. Warranty .....	23
17. Customer Service .....	23



## 1. What is Espil BSL-10

Espil BSL-10 is based on IPL (Intense Pluses Light) technology which is regarded as the most effective and safest in today's markets. The FDA's definition of permanent hair reduction states that after the treatment is finished a minimum of 30 months without any new growth must be observed. Espil BSL-10 is the most innovative light-based hair removal device for use in the privacy of your own home.

To achieve hair removal, it is necessary not only to destroy the hair but to destroy the stem cells that create the hair. It is important to understand that the hair is only a conduit for the light energy, and the target for successful permanent hair reduction is to destroy the stem cells that make the hair follicle. The Espil BSL-10 home hair removal device is a small, portable IPL. The specifications for the device include wavelengths of light from 475 to 1200nm.



Light based hair removal is not suitable for naturally darker skin tones or tanned skin. To address this issue, a unique Skin color sensor is embedded in the Espil BSL-10 to measure the treated skin complexion at the beginning of each session and occasionally during the session. The Skin color sensor ensures that pulses will only be emitted on suitable skin tones taking the guess work out of treatment. Espil BSL-10's built-in Skin color sensor is designed to measure the complexion of the applied surface and enable application only on suitable skin complexions.



This unique safety feature will not let you treat where your skin is too dark or too tanned. Furthermore, the 20 X 30 mm optical lens through which pulses of light are delivered is recessed inside the lamp cartridge at the applicator tip. This enables Espil BSL-10 to protect your skin by avoiding direct contact between the optical lens and the skin.

Espil BSL-10 is not designed for everyone. Please read and consider the information in the following section before use. For further information and personalized advice you may also contact our customer service center. If you are unsure if Espil BSL-10 is safe for you to use, please ask your doctor or dermatologist.

---

## 2. Warnings & Safety information

---



As with any electrical device, certain precautions must be taken in order to ensure your safety when using Espil BSL-10. Espil BSL-10 is an electrical device. As such it should always be kept away from water.

**DO NOT** use this appliance near bath-tubs, showers, basins or other vessels containing water. Don't touch the device with wet hands.

Keep this device out of the reach of children. The Espil BSL-10 should not be used on or by children under the age of 15.

Don't use a towel to pick up the device in the case of overheating during use.

The fan noise - The cooling fan in Espil BSL-10 makes noise similar to a hairdryer. The air circulation it provides keeps the components cooled to normal operating temperatures. This is normal.



## 2. Warnings & Safety information



**Note :** Don't overuse the device. Because the filter may overheat. In the case of overheating turn the device off to allow it to cool down.

When Espil BSL-10 session has been completed turn Espil BSL-10 off by pressing the Power On/Off switch then, Unplug the power cord from the electrical outlet. (To unplug the device do not yank the cord)

A disposable lamp cartridge should also be replaced if its lens is broken. The lens enables Espil BSL-10 to protect your skin by avoiding direct contact between the lamp and the skin.

The system comes with the Espil BSL-10 power cord. Please don't use any other power cord. Doing so, could cause injury.

The Espil BSL-10 is compatible with 100 - 240V power sources.

Use a dry cloth to clean the surface of the lamp filter of any dust. Please don't use any acetone, alcohol, or any other flammable cleaning solutions on the surface of the filter.

If your Espil BSL-10 is broken, damaged, in need of repair, or for any other Espil BSL-10 user assistance, please contact Espil BSL-10 customer service center.

Don't attempt to open or repair your Espil BSL-10 device. An authorized repair center must perform all repairs. Contact Customer Service to arrange for repair of a broken or damaged device.

### 3. Precautions



While applying the treatment, a flash may be seen coming from the main applicator. Do not put your face near or expose your eyes to the flash. It is highly advised that you wear either the Espil BSL-10 safety goggles included.

Avoid Espil BSL-10 on naturally dark skin complexion or recently tanned skin. Treating dark skin with Espil BSL-10 can result in adverse effects such as burns, blisters, and skin color changes (hyper- or hypopigmentation). A unique Skin color sensor is embedded in Espil BSL-10 to measure the treated skin complexion at the beginning of each session and occasionally during the session. The Skin color sensor ensures that pulses will only be emitted on suitable skin tones.

#### Choose your energy levels carefully!

The energy level refers to the intensity of the light pulse that is projected on your skin during use, from the lowest level(-) to the highest level(+). The indicator lights on the control panel illustrate the energy level at which the machine is set. Always start your first Espil BSL-10 hair removal session at the lowest energy setting. If you experience little or no discomfort during and after the hair removal session using the lowest energy level, raise the energy level by one indicator light at the next session, and so on for each subsequent session. As the energy level increases, so do the results of Espil BSL-10 as well as the risk of side effects.

The Espil BSL-10 should not be used on or by children under the age of 15. Children ages 15 to 18 can use this device under parental supervision.





### 3. Precautions



Make sure that the ready indicator is lit! If the ready indicator does not turn on, turn Espil BSL-10 off and back on again by pressing the power on/off switch twice. (This may be caused by electrical discharges or the batteries may be dead)

Try to avoid overlapping pulses! Don't treat the same area of skin more than once per hair removal session! Overlapping the same target area can cause a burn. For the most effect, it should be reapplied every 10-15 days.

Espil BSL-10 is not recommended for use around eyes or on dark skin.





## 4. When not to use

---



If you have a history of skin cancer or areas of potential skin malignancies

If you have been on a steroid regimen

If you have had, or are on radiotherapy or chemotherapy

If you have a tattoo or permanent makeup on treatment area

If you have a febrile disease (over 38 degrees)

If you have abnormal blood pressure

Tuberculosis, or any acute or infectious diseases

If you are pregnant or nursing (lactating)

If you have a heart disorder

If you have any skin diseases

If you have any other condition which in your physician's opinion would make it unsafe for you to be treated.

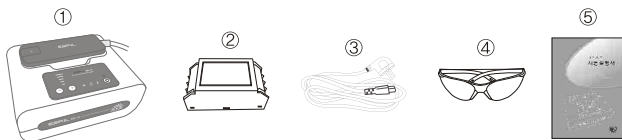
If you have allergies

If you were exposed to strong sunlight or an artificial tanning machine within the past week.

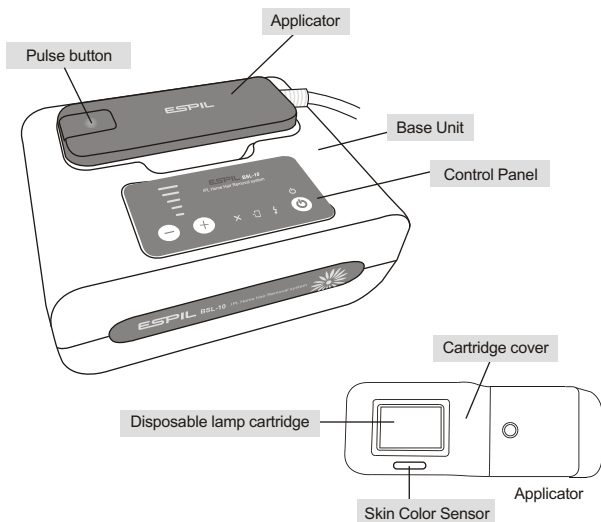
## 5. Package Contents and Device Description

Upon opening the Espil BSL-10 package, you will find the following parts:

1. Base unit
2. Disposable Lamp Cartridge
3. AC Cord
4. Safety goggles
5. Instructions for use



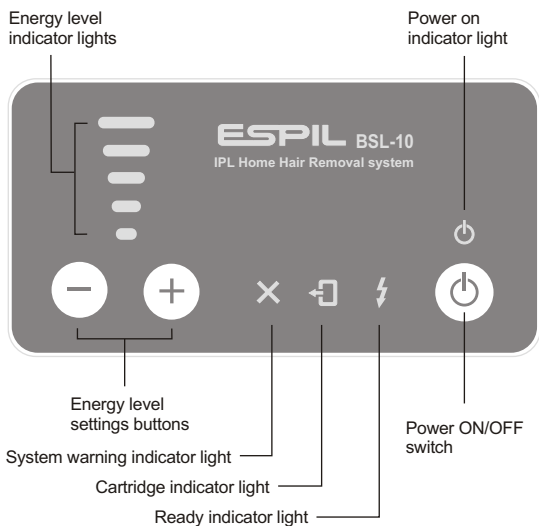
Please read and understand the part names prior to operating this unit.





## 6. Uses for Espil BSL-10

- 1) The skin should be shaved, clean, dry and free of any powders, antiperspirants or deodorants.
- 2) Plug the AC power cord into the Espil BSL-10 base unit socket. Then press the Power On/Off switch to turn Espil BSL-10 on.
- 3) Adjust the power setting. Your Espil BSL-10 is automatically set to the lowest energy level. If you experience little or no discomfort during and after the hair removal session using the lowest energy level, raise the energy level by one indicator light at the next session, and so on for each subsequent session.

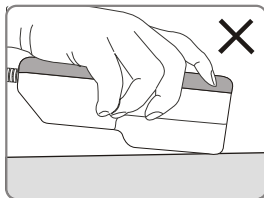
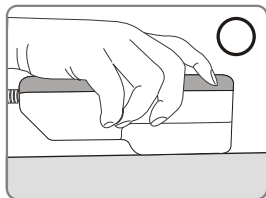




## 6. Uses for Espil BSL-10

✘	When there is a system error the light blinks. Turn Espil BSL-10 off and back on again by pressing the power on/off switch twice.
🔄	This light indicates that there's no lamp cartridge installed.
⚡	The ready indicator light will turn on to indicate that your Espil BSL-10 is ready for a pulse. After approx. 4-7 seconds the ready indicator light will turn on again. Continue to administer pulses until the desired skin area is covered.

- 4) Using firm pressure, apply the applicator tip to the skin. Be sure that the area you are about to treat is spread evenly and smoothly, and that the applicator tip is in full contact with the skin to destroy the stem cells (papilla) responsible for hair growth.



- 5) Press the pulse button to emit a pulse. You will see a flash of light and hear a POP sound. This is a normal light pulse of Espil BSL-10. After emitting a pulse, remove the applicator tip from the skin. If you keep the applicator tip against your skin after pressing the button. It may cause a burn.



- 6) The device is designed to determine suitable skin complexion within 0.5 seconds of pressing the pulse button. If the users skin complexion is not suitable for treatment, the device will not work. After the device determines that the skin is of suitable complexion, it will pulse after the 0.5 seconds has elapsed.
- 7) After approx. 4-7 seconds the ready indicator light will turn on again, accompanied by a beep, to indicate that your Espil BSL-10 is ready for another pulse. The beep sound after each flash is to indicate when the machine is ready and charged to take another shot.
- 8) When Espil BSL-10 session has been completed turn Espil BSL-10 off by pressing the power on/off switch. Unplug the power cord from the electrical outlet.
- 9) The area treated with Espil BSL-10 can be cleaned and maintained with standard skin care products. Special care must be taken to avoid unprotected sun exposure and it is advisable not to take a hot shower for 1-2 days following the treatment. Strong sunscreens (30+SPF) and covering clothing are suitable for protection from the sun.



## 7. Quick Guide

---

### ✔ Each time

- The skin should be shaved, clean and dry
- Choose the energy setting carefully
- Be sure that the skin area you are about to treat is spread evenly and smoothly, and that the applicator tip is in full contact with the skin.
- For safety and to ensure quality results, read the User Manual completely before starting to use with Espil BSL-10

### ✔ During treatment

- Before using Espil BSL-10, shave the area you plan to treat, and make sure skin is completely dry and clean. (but, not waxed.)
- Let the hairs gradually fall out on their own. This may take up to 10 - 14 days. After 10 - 14 days of treatment, hair follicles become damaged and incapable of producing new hair.
- For the most effect, it should be reapplied every 10 - 15 days.
- Espil BSL-10 will normally need to treat an area for 5 - 6 months.

### ✔ The first hair removal session

- After the first hair removal session, there may be no noticeable result.
- Your skin may become red right after using Espil BSL-10 or within 24 hours of using Espil BSL-10. Redness generally clears up within 2 to 3 days.

### ✔ After 1 month (2 - 3 treatments)

- It is possible that some hair will grow back lighter and finer after treatment with Espil BSL-10.
- Usually these hairs are a fraction of what was originally there, and continued treatment should produce the desired result on the remaining hair.

### ✔ After 2 month (4 - 6 treatments)

- Dark thick hair responds best to these light-based treatments.
- Most men notice significant change after 4 - 6 sessions.
- After the first 2 months of treatment, the sessions should be reduced to once per month.

### ✔ After 4 - 6 month (6 sessions over)

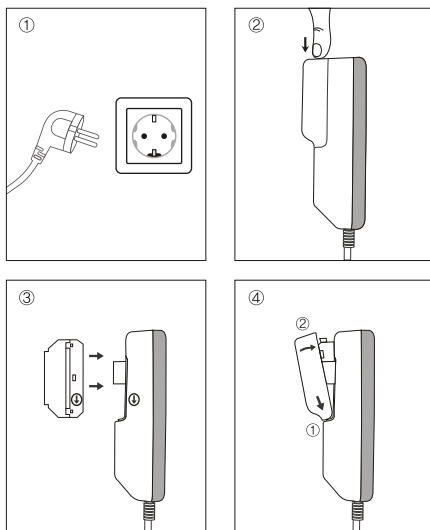
- You can achieve a significant reduction in hair growth
- Maintenance hair removal sessions with Espil BSL-10 may be required from time to time (once or twice a year)

※ Note : The efficiency of hair removal varies from person to person according to body area, hair color, and how Espil BSL-10 used.

## 8. Replacing the Lamp Cartridge

The disposable lamp cartridge should soon be replaced when the disposable lamp cartridge has reached of its possible lifetime. Make sure you unplug the device before replacing the cartridge.

1. Unplug the device before replacing the cartridge.
2. Remove the cover of cartridge. When you open the cover, give it a strong tug upwards as directed below.
3. Take out the spent cartridge, replacing it with the new cartridge be sure to follow the directions displayed below.
4. When putting the cover back on the device be sure to follow the directions displayed below.





---

## 8. Replacing the Lamp Cartridge

---

- While replacing the cartridge don't use any sharp objects to pry it out. This may cause damage to the device or injury due to electric shock.
- The Espil BSL-10 disposable lamp cartridge can fire 3000 - 8000 light pulses. The life of the cartridge is directly effected by the power setting.
- When the light in the cartridge dims it will soon be necessary to replace the Disposable lamp cartridge.

---

## 9. Plan your Espil BSL-10 hair removal for best results

---

- The skin should be shaved, clean, dry, and free of any powders, antiperspirants, or deodorants. Shaving reduces the pain during use and the chance of burning your skin by removing the surface hair.
- You should start with the LOW setting for the first time and increase to the MEDIUM or HIGH settings based on your comfort level. Energy level determines the intensity of the Espil BSL-10 light pulse delivered to your skin, from the lowest level (-) to the highest level (+). As energy level increases, so does hair removal results as well as the risk of possible side effects and complications. You should use a lower setting if you are experiencing pain, the area is flushed, or has blotches.



## 9. Plan your Espil BSL-10 hair removal for best results

---

- Espil BSL-10 removes unwanted hair by selectively addressing hair pigment. Varied quantities of pigment also exist in the surrounding tissue of skin. The quantity of pigment in a particular person's skin, or your skin complexion, determines the degree of risk they are exposed to using Espil BSL-10 hair removal device.
- Most users do feel some mild discomfort during use, usually described as being a mild stinging sensation on the treated skin areas. The stinging sensation usually lasts during the time of the application itself or for a few minutes thereafter. or your skin may become red right after using Espil BSL-10 or within 24 hours of using Espil BSL-10. Redness generally clears up within 24 hours.
- In rare cases treated skin may become very red and swollen. Because that the energy level setting is too high. See your doctor if redness does not go away within a week. Then you should not continue to use Espil BSL-10 till the redness clears up.
- The low energy used in Espil BSL-10 reduces its potential to cause harm or complications, and contributes to your overall safety.
- Cold compresses and hydrating cream are advised for post treatment care, and to minimize any treatment side effects should they occur. After your Espil session, a high level UV sun screen (SPF 30+) or covering clothing are suitable for protection from the sun. Or apply moisturizer to dry and overheated skin to calm skin redness and maintain elasticity.





---

## 10. About Skin Color Sensor

---

- The Skin Color Sensor Light-based hair removal on darker skin tones can result in adverse effects such as burns, blisters, and skin color changes(hyper- or hypo-pigmentation). To prevent such misuse, a unique SKIN COLOR SENSOR in Espil BSL-10 measures the treated skin complexion at the beginning of each session and occasionally during the session. If the SKIN COLOR SENSOR detects a skin tone that is too dark for Espil BSL-10 application, the device will automatically stop emitting pulses. If you see no light pulse this is an indication that your skin tone, measured by the SKIN COLOR SENSOR, is too dark for safe application. Try using the device on a different body part or contact the Espil BSL-10 support.

---

## 11. Frequently asked questions

---

### Q. About IPL Technology?

- A. Espil BSL-10 is based on Intense Pulsed Light (IPL) technology that is a personal combined-energy based device for long-term hair removal. To achieve hair removal, it is necessary not only to destroy the hair but to destroy the stem cells that create the hair. It is important to understand that the hair is only a conduit for the light, and the target for successful permanent hair reduction is to destroy the stem cells that make the hair follicle. The Espil BSL-10 home hair removal device is a small, portable IPL. The specifications for the device include wavelengths of light from 475 to 1200nm.



**Q. Does the Espil BSL-10 hair remover deliver permanent results?**

A. Espil BSL-10 is based on IPL (Intense Pulsed Light) technology which is regarded as the most effective and safest in today's markets. It is important to understand more about IPL and how it works on the skin. As with any light-based or laser hair removal device, results are not immediate and may take a few treatments. With 3-6 sessions, a 70 -90% success rate in the treated area is typically achieved. Every hair in our body goes through the three phases of the hair growth cycle: Anagen, Catagen and Telogen. These phases have an important impact on how the process of light-based hair removal works. Anagen(84%) is the hair growth phase while Catagen(2%) and Telogen(14%), are both resting phases. At any given moment the majority of the hair follicles in any skin area are in the resting stages. These resting hairs cannot be effected by laser or light hair removal treatment. However hairs in the growing Anagen phase respond. It is therefore to understand that it may take a full hair growth cycle to achieve complete results when doing any energy based hair removal. This heat doesn't destroys the cells(papilla) responsible for hair growth in the resting phases(Catagen and Telogen). This is one of the main reasons that multiple treatments are required to achieve the desired result for any energy based treatment.

**Q. How often should I use Espil BSL-10?**

A. As with any light-based or laser hair removal device, results are not instant, and you might think nothing has been achieved at all. Treatments should be carried out every 2- 4 weeks for at least 3 sessions, and up to 7- 8 if necessary. After 6 months of sessions full results (70 - 90%) should be achieved.

Q & A



## 11. Frequently asked questions

### Q. Will Espil BSL-10 hurt?

A. When used properly most users of Espil BSL-10 report feeling a slight sensation of heat at the time of the pulse of light. Energy level refers to the intensity of the light pulse that is projected on your skin during use, from the lowest level(-) to the highest level (+). Indicator lights on the control panel illustrate the energy level at which the machine is set. As the energy level increases, so do the results of Espil BSL-10 as well as the risk of side effects. Always begin your first use of Espil BSL-10 at the lowest energy setting (one light at"-")! Only if you experience little or no discomfort during and after use of Espil BSL-10, and so on for each subsequent hair removal session. Users with thicker and darker hair may feel slightly more discomfort, but this discomfort subsides once the hair removal session is completed. Shave the skin area before using Espil BSL-10. Shaving may reduce the tingling, burning, or pain during use. If the area being treated or the filter on the cartridge is dirty it could cause the device to hurt more. So the area being treated should be shaved well and the filter cleaned by wiping it with dry a cloth.

### Q. Where on the body can Espil BSL-10 be used?

A. The Espil BSL-10 device has been designed for body treatments anywhere below the neck. The most common areas treated with Espil BSL-10 are: legs, underarms, arms and bikini line for women! Chest, back, legs and arms for men. Espil BSL-10 is not recommended for use on the face, and may not be suitable for everyone. The Espil BSL-10 also should not be used on the face, as this may cause unwanted hair growth or damage to the eyes. Since treating the face may result in serious side effects, we recommend treatment by a clinic.



**Q. Are there any side effects to using the Espil BSL-10?**

A. When used according to the instructions, side effects and complications associated with use of Espil BSL-10 are uncommon. However every cosmetic procedure, including those designed for home use, involves some degree of risk. You may feel some tingling, burning, itching, red spots, darker pigmentation, or mild pain when using this device. Some discomfort is normal.

**Q. Is Espil BSL-10 effective on white, grey or blonde hairs?**

A. Espil BSL-10 works best on darker hair types, or hair that contains more melanin. Melanin is the pigment that gives hair and skin its color, and will absorb light more effectively. Black and dark brown hair respond the best, although brown and light brown hairs will also respond but typically require more sessions for the desired results.

Q & A

---

## 12. Cleaning and disposing

---

- Unplug Espil BSL-10 and keep this device out of the reach of children.
- Use a dry, clean cloth and a specially formulated cleaner for electronic equipment to gently wipe Espil BSL-10 surface, especially the applicator tip. When Espil BSL-10 has reached the end of its life, please contact your local recycling center to dispose of it properly.
- Don't store the device in temperatures above 40° Celsius. (104° F)



---

## 13. Troubleshooting

---

1. A light pulse is not emitted when I press the pulse switch
  - Make sure the power cord is properly connected to the Espil BSL-10 device. and the power cord is plugged into an electrical outlet on the wall. Then press the Power On/Off switch to turn Espil BSL-10 on.
  - Make sure the replacing lamp is correctly installed.
  - Make sure that the READY INDICATOR is on.
  - Check the SYSTEM WARNING INDICATOR LIGHT.
  - If the SYSTEM WARNING INDICATOR LIGHT is turning on, turn the Espil BSL-10 off and back on again by pressing the POWER ON/OFF SWITCH twice.
  - Make sure that you have good contact with the skin and that the APPLICATOR TIP is evenly and firmly pressed to the skin. Then press the pulse button to produce a pulse.
2. If the machine overheats.
  - You will also hear a fan noise. The fan helps to keep the unaffected areas cool. Even this fan helps to keep the area around the affected hair cool, it is still common to feel a warm, tingling sensation with use.
  - The cooling fan in Espil BSL-10 helps move the air to keep the components cooled to normal operating temperatures. When you use it on the high settings, it still may cause the machine to overheat. If that happens, you will need to give it some time to cool off before you try again.
3. Make sure that the ready indicator is on.
  - If the ready indicator remains off, turn Espil BSL-10 off and back on again by pressing the power on/off switch twice.

---

## 14. Performance environment

---

- Temperature :  $-10 < TC < 30$  C,
- Relative Humidity :  $30\% < HR\% < 85\%$



---

## 15. Specifications

---

- Model No.: BSL-10
- Technology: Intense Pulsed Light
- Spot Size : 20mm x 30mm
- Wavelength : 475 ~1200nm
- Electrical Requirement : 100-240VAC. 2A

---

## 16. Warranty

---

Espil BSL-10 is committed to quality. Each Espil BSL-10 hair removal system is rigorously tested for quality and performance. Our limited, 1-year warranty covers defects in materials and workmanship of your Espil BSL-10. You will be charged for the repair if the purchase took place more than a year ago. If your Espil BSL-10 is broken, damaged, in need of repair, or for any other Espil BSL-10 user assistance, please contact Espil BSL-10 customer service.

---

## 17. Customer Service

---

BNB MEDICAL CO., LTD.  
Room404, Hyundai Hyel, 779-11, Jayang-Dong Gwangjin-Ku,  
Seoul, South Korea  
Tel 82 2 454 6406 Fax 82 2 454 6541  
[www.bnbmedical.co.kr](http://www.bnbmedical.co.kr)

# ESPIL™



**BNB**  
MEDICAL

**BNB MEDICAL CO.,LTD.**  
[www.bnbmedical.co.kr](http://www.bnbmedical.co.kr)