

User Manual

Content

Content	2
System Requirements	4
Brief Introduction	5
Features	5
Support Any Mail Software	5
Fuzzy Grading Engine	5
Other Enhanced Functions	5
Support Three Modes of Operation	6
Installation Procedure	7
First Usage	8
Letterman’s Setting Wizard	9
Set the Email Account You Want to Use to Collect Letters via Letterman	9
Set Outlook Express to Use Letterman’s Proxy Server	10
System Filtering Rule Configuration Wizard - Step 1	10
System Filtering Rule Configuration Wizard - Step 2	12
System Filtering Rule Configuration Wizard - Step 3	13
System Filtering Rule Configuration Wizard - Step 4	13
System Filtering Rule Configuration Wizard - Step 5	14
User-defined Rules Configuration	14
What is the Function of “Do not Allow the HTTP Links in the Letters”	15
What are the Functions of Letterman CompactOne (tm)	17
Set the Mailbox Accounts in Letterman Manually	18
Manually Set Outlook or Outlook Express to Filter out Mail via Proxy Server	19
Letterman’s User Interface	21
In-box Window	21
Toolbar in the In-box Window	21
The Letter List Area in the In-box Window	22
Junk Grading, Character Coding, Mail Data, Content Preview, Detailed Appraisal Report and Establish Rules	22
Right Mouse Button Pop-up Menu	24
Other Letterman Configuration Menus	24

Icon of Event Log	26
Icon of Configuration Wizard	26
Icon of Configuration	26
<i>Items of main configuration</i>	26
<i>Items of rule grading configuration</i>	28
<i>Items of in-box window configuration</i>	29
<i>Items of reception proxy configuration</i>	29
Icon of Rule	33
<i>The operation of rules of filtering</i>	33
<i>Friend list (sender)</i>	34
<i>Approved electronic newspaper (recipients)</i>	35
<i>Approved domain (sender domain)</i>	36
<i>The system's built-in rules</i>	37
<i>User-defined rules</i>	38
Icon of Online Updating	40
Icon of Registration	40
<i>How to activate Letterman by enter serial number</i>	40
Icon of About	40
<i>View Letterman's copyright and Version</i>	40
Rule Example A: Collect Letters in Traditional Chinese and English Only (Use the Setting Wizard)	41
Rule Example B: Do not Receive Mail in Simplified Chinese	41
Rule Example C: Do not Allow Unapproved Domains and Intercept the Links in the Mail	43
Rule Example D: Allow the Reception of Mail with Subject that Contains a Certain Character string	44

System Requirements

- ◆ Personal computer with 300Mhz or higher processor
- ◆ 64 MB of RAM or more (128 or more recommended)
- ◆ At least 15 MB free disk space
- ◆ Internet connection
- ◆ Windows 98SE/ME/2000/XP/2003
- ◆ Outlook 2000/XP/2003, or
- ◆ Outlook Express 5.0/5.5/6.0, or
- ◆ Eudora, Incredimail, Thunderbird, Mozilla, or
- ◆ Opera, The Bat, Foxmail, Becky or Others

Brief Introduction

A spam filtration software catering for the needs of the worldwide Chinese, which can correctly distinguish emails in English, Japanese, Korean, Traditional Chinese and Simplified Chinese, and even can intercept hostile link from advertisement service provider.

Features

Support Any Mail Software

- ✓ It can use Outlook and Outlook Express software to collect mail, and you do not have to learn something more.
- ✓ It can use Letterman to collect mail and filter out junk mail quickly.
- ✓ Support POP3, Web-based Hotmail/MSN and Yahoo email accounts

Fuzzy Grading Engine

- ✓ Correctly distinguish Traditional Chinese, Simplified Chinese, English, Japanese, Korean and etc and filter these letters.
- ✓ You can simply set to allow the reception of letters in English only.
- ✓ Unique detailed feature appraisal report for each letter
- ✓ Built-in intelligent engine to ensure 100% automatic filtration of “via gra”, “V.ia_gr^a”, “V.I.A.G.R.A” and etc

Other Enhanced Functions

- ✓ Junk mails will not come back.
- ✓ Address book can be imported from Outlook and Outlook Express automatically.
- ✓ White lists, user-defined letter protecting conditions and fast add "intelligent fuzzy" filtration can be set.
- ✓ By intercepting the links in the mail, it prevents ill-intentioned Web Bug mail from gathering personal information
- ✓ Support multiple email accounts
- ✓ Online system updating
- ✓ You can use it immediately without training.

Support Three Modes of Operation

- Filtering junk mail by built-in user interface: use Letterman's user interface to receive and read new mails. This mode is suitable for the first collection of letters every morning.
- Proxy server intercepts the links in the mail: use Outlook or Outlook Express (or other POP3 email software) , via Letterman's proxy server, to intercept the links in the mail to prevent ill-intentioned mail that contains web bugs from gathering your private information. (Do not filter out junk mail, but only intercept the links in the mail)
- Proxy server filters out junk mail: use Outlook or Outlook Express (or other POP3 email software) to filter out junk mail via Letterman's proxy server, and pack all the junk mail into a CompactOne (tm) letter.

Installation Procedure

1. Execute the setup file (letterman_setup.exe, for example).
2. Select language for installation.
3. Click “Confirm” to begin the setup program.



4. Click “Next” to continue.
5. After view and give your consent to the license agreement, click “Next” to continue.
6. After select the directory for installation, click “Next” to continue.
7. Check the icon type you want to appear after setup and click “Next”.
8. Click “Setup” to begin installation.

First Usage

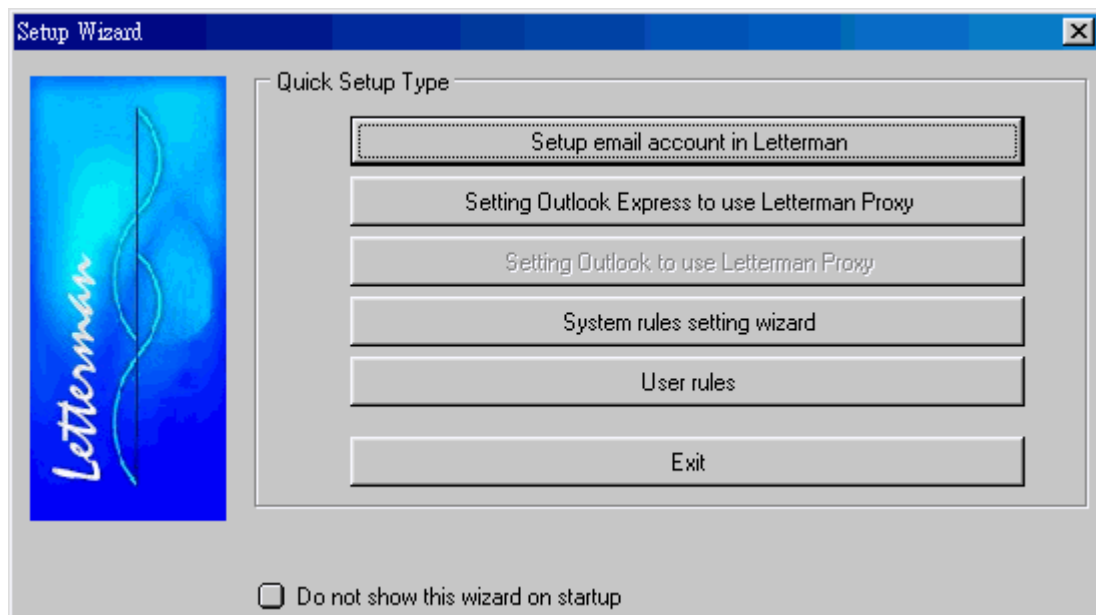
After setup, this software will automatically:

- ✓ Import the address book from Outlook and Outlook Express.
- ✓ Start up the Setting Wizard.

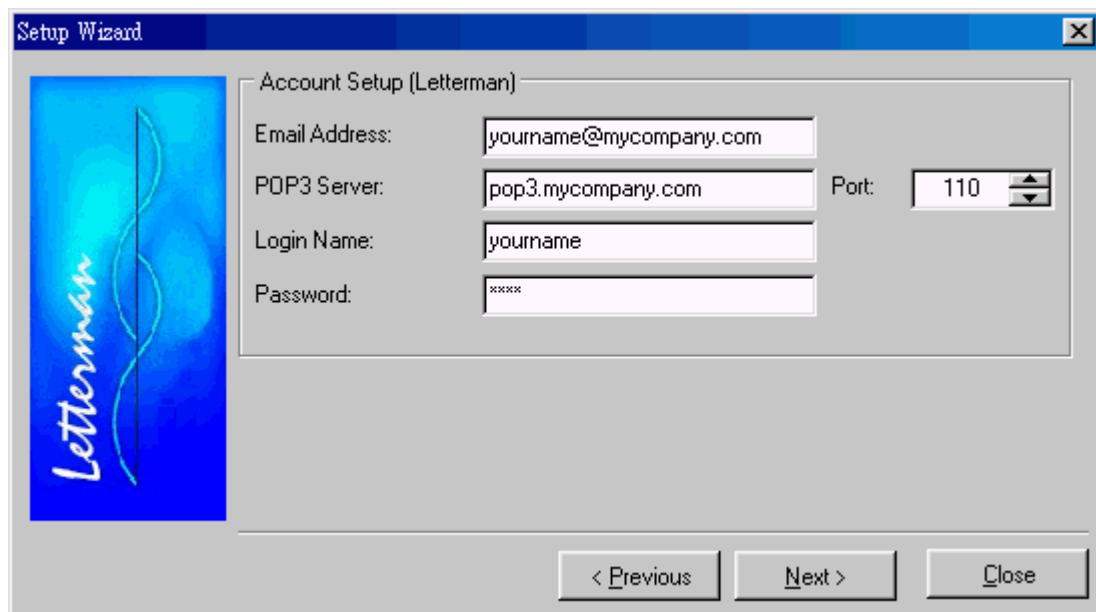
In the Setting Wizard, you can:

- Set the email account you want to use to collect letters via Letterman.
- Set Outlook Express to use Letterman's proxy server.
- Set Outlook to use Letterman's proxy server.
- System filtering rule configuration wizard.
- Configure user-defined rules.

Letterman's Setting Wizard

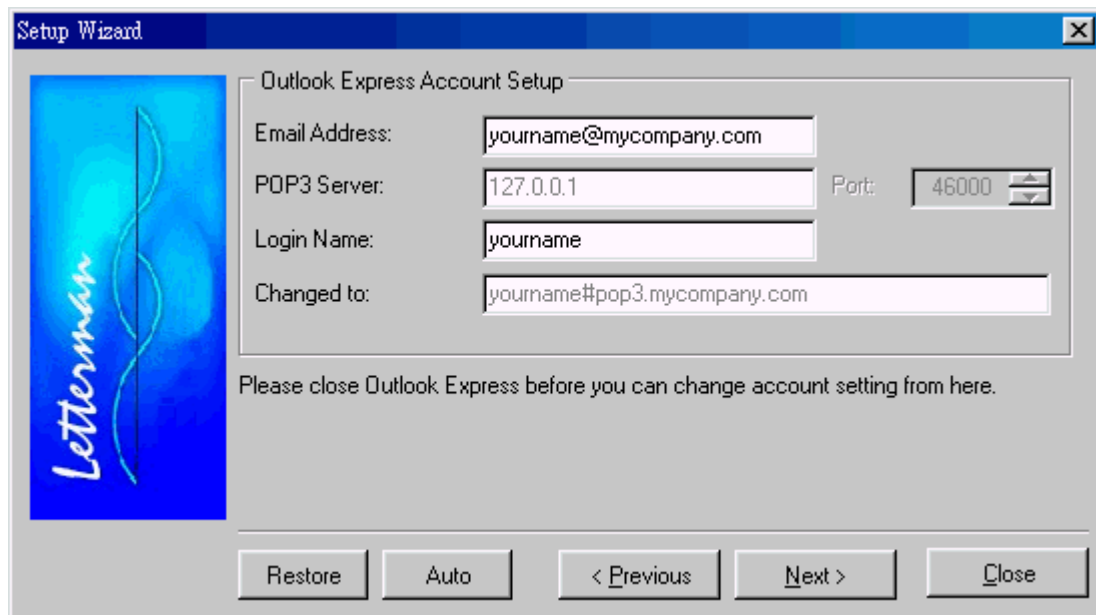


Set the Email Account You Want to Use to Collect Letters via Letterman



Set POP3 mailbox account data.

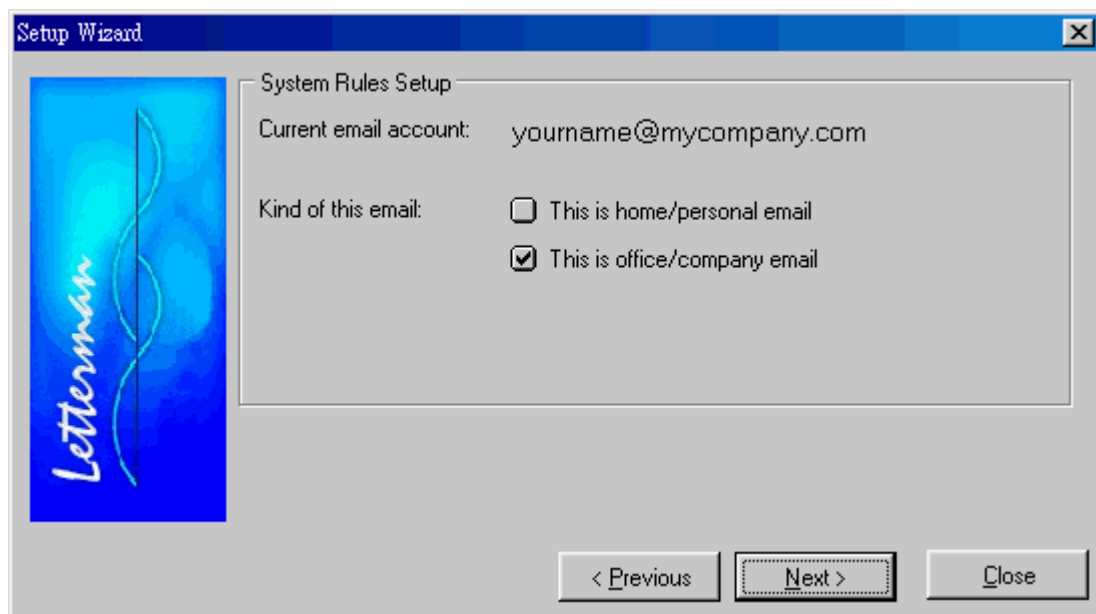
Set Outlook Express to Use Letterman's Proxy Server



Automatically get Outlook Express's first email account setting and change it. If there is no error, press "Next" to continue.

Hint: Please close Outlook Express before you can change account setting from here.

System Filtering Rule Configuration Wizard - Step 1

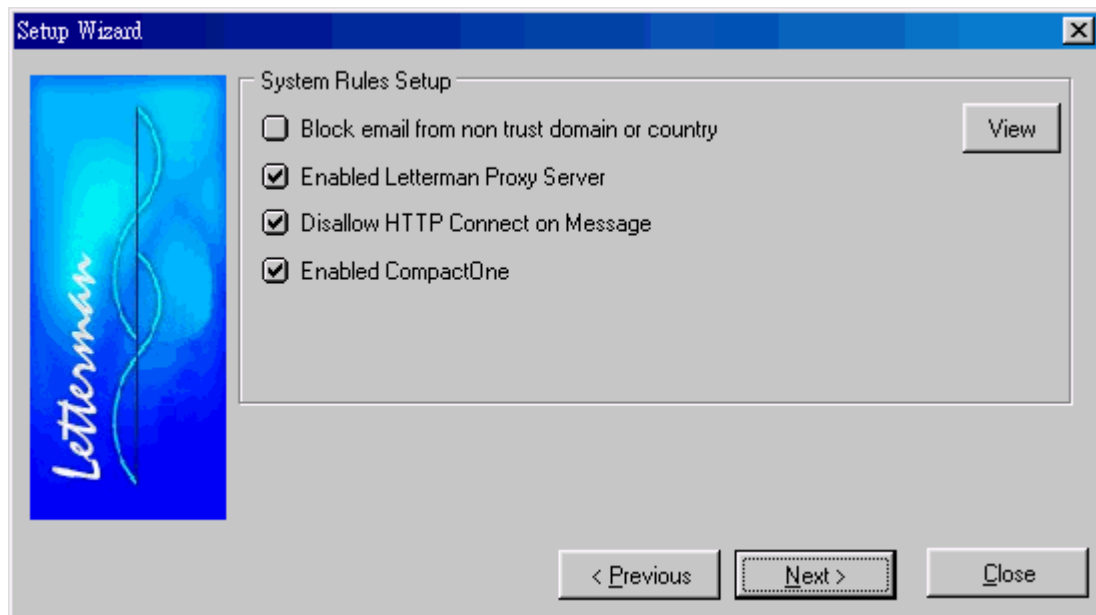


Select the type of email account. Letterman has different default rule settings for different types of accounts.

For example, generally, users of individual email address want less junk mail, whereas users of corporate email address do not allow false deletion of (false positives) letters from clients. Therefore, there are different default rule settings for

accounts of different types.

System Filtering Rule Configuration Wizard - Step 2



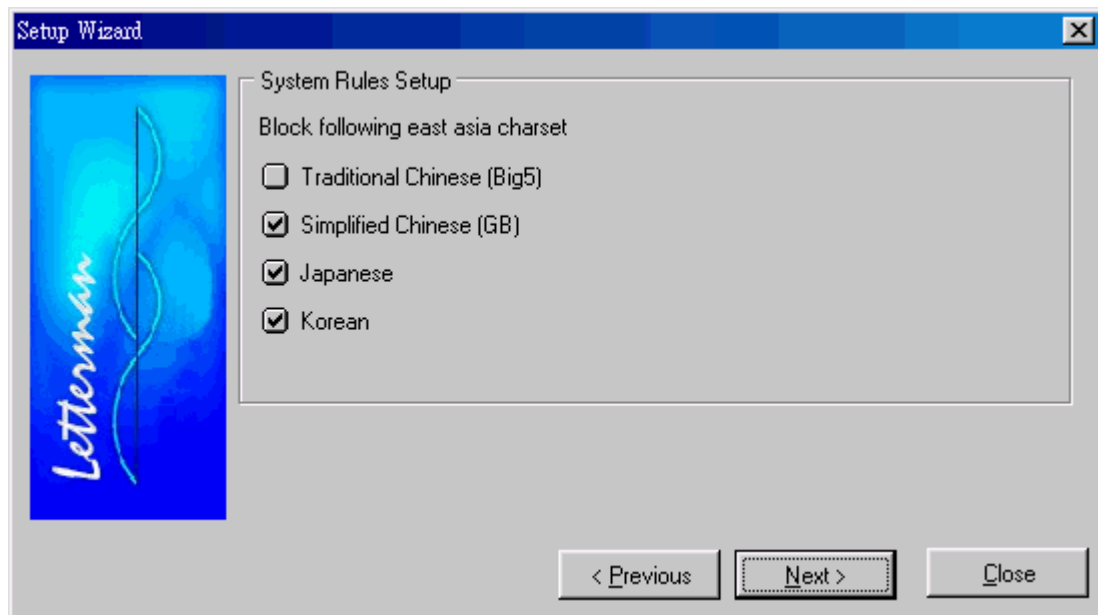
Unapproved domains are not allowed to send letters to you: if it is not checked, then the system will skip this kind of filtering check. (The system allows .com/.net/.org/.edu/.gov. by default. For other domains (such as .hk/.cn/.de and etc), please select approval or not at your discretion) Press the “inspection” button to view detailed settings.

Start up the proxy server: if you want to use Outlook or Outlook Express (or other POP3 email software), via Letterman, to intercept the links in the mail or filter out junk mail, you must firstly start up the proxy server. After the completion of setting, you just need to use your original Outlook and Outlook Express software to collect letters and confirm that Letterman is running. You do not have to learn another set of mail software. Outlook and Outlook Express will automatically process junk mail via Letterman.

Do not allow the HTTP links in the letters: by intercepting the links in the mail, prevent ill-intentioned Web Bug mail from gathering your private information. (Recommend to check this item)

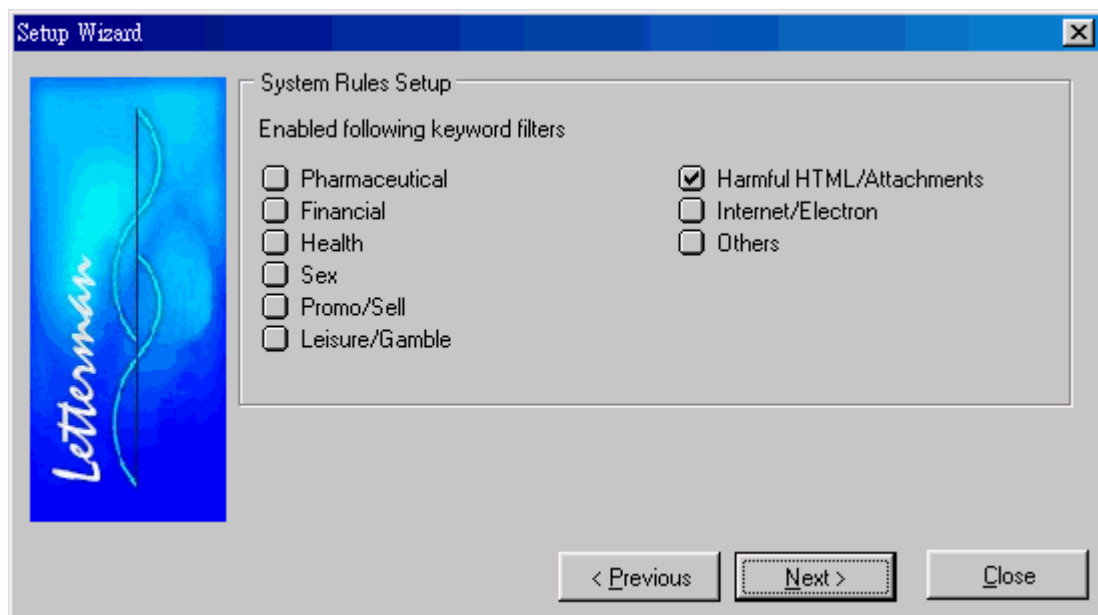
Start up CompactOne: use Letterman’s proxy server to filter out junk mail, and pack all the junk mail into a CompactOne (tm) letter.

System Filtering Rule Configuration Wizard - Step 3



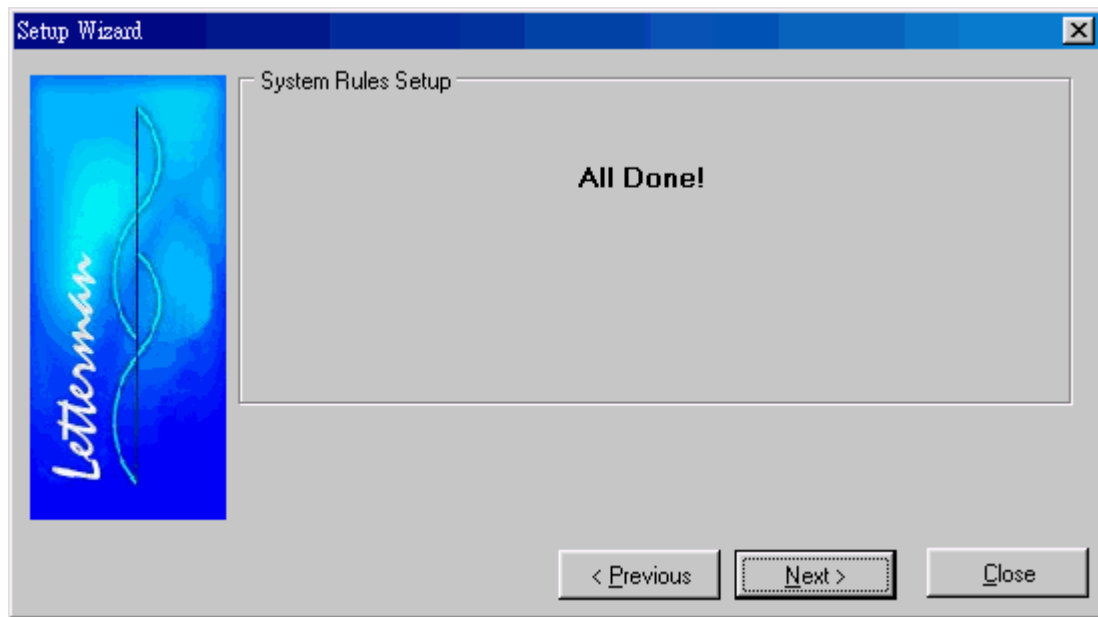
Unallowable Asian characters: check Asian characters (in which a letter is written) you do not want.

System Filtering Rule Configuration Wizard - Step 4



Select the rules of key word filtering. If a rule is not checked, it means not to filter out this kind of key words. For example, you are a financial company or you will receive mail regarding finance, then you can uncheck “financial” and check to filter out other kinds of key words.

System Filtering Rule Configuration Wizard - Step 5



Complete the setting. Press “next” to continue.

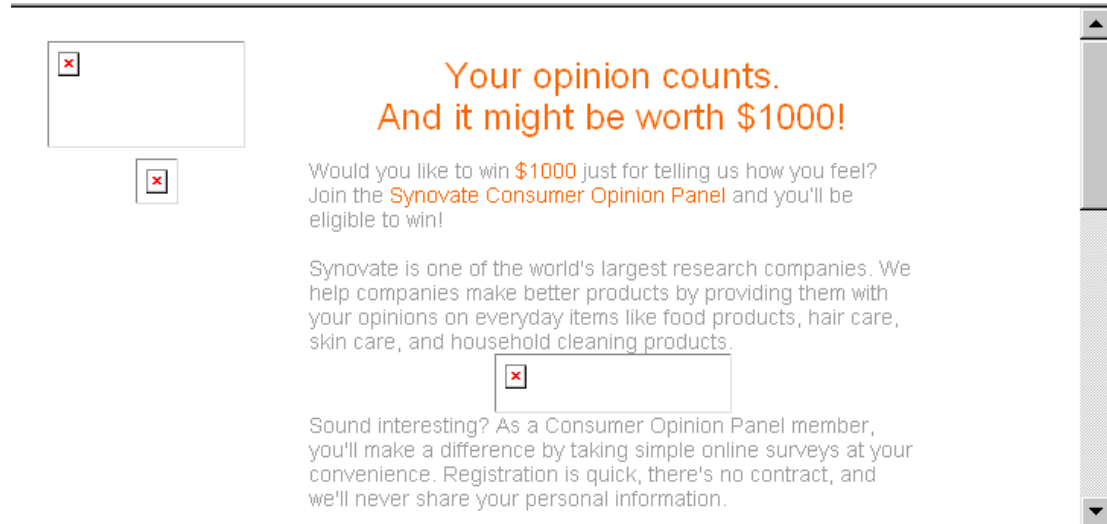
User-defined Rules Configuration

The system will jump to “user-defined rules” configuration menu, and you can add or delete rules of filtering at your discretion.

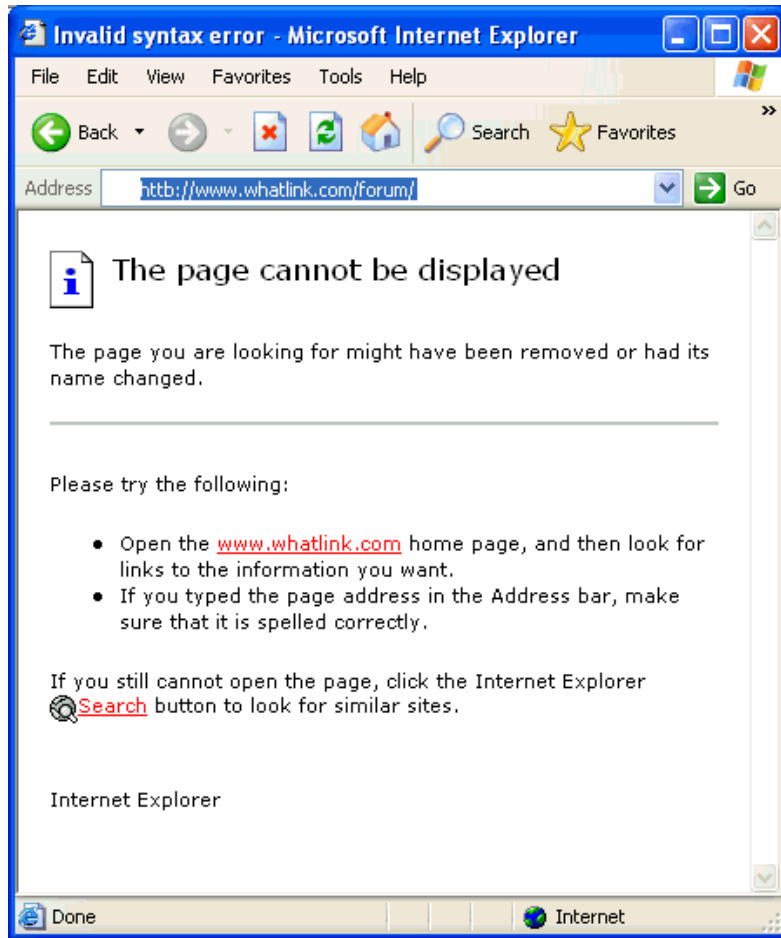
What is the Function of “Do not Allow the HTTP Links in the Letters”

Links in the Letters”

When the function of “do not allow the HTTP links in the letters” is on, for all the mail that are collected via Letterman’s proxy server, if the letters contain http links, they will be invalid. Thus you can prevent ill-intentioned mail that contains web bugs from gathering your private information.



You can all the same press the hyper links in the letter. After press the hyper links, you just need to change the http:// in the IE website into normal http://.



What are the Functions of Letterman CompactOne

(tm)

The is a “CompactOne letter” processed by Letterman while receiving junk mails by Outlook Express.

Rank	Charset	Subject	To	From	Date	Size	File
6	ENG	Discover and be Discovered	"Leo" <leo@localhost.net>	"Connection" <editor-1f1fcwz hac9zaw@eros.rmail	07/08/2004 PM	428	dckp10.eml
6	ENG	Meet people who want to meet you.	"Valued Client" <steven@localhost.net>		07/08/2004 PM	391	dckp11.eml
6	ENG	SAP - Your Career Gateway to China	<steven@localhost.net>	<steven@localhost.net>	07/08/2004 PM	397	dckp78.eml
9	ENG	Earn a 6% rebate on ALL gas purchases	"Customers" <steven@localhost.net>	"Customer Service" <editor-umebgwby3ibjfi@cayma	07/08/2004 PM	457	dckornd.eml
10	ENG	Lose Weight While You Sleep	"Fat Bumer funs" <network@localhost.net>	"Fat Bumer" <editor-1f1fcwz ezuut@maui.dlnetw	07/08/2004 PM	439	dckpd9.eml

5 message(s)

Save Path:
C:\latest_prj\co_WL\Letterman\Spam_archive\040807\

A copy of each processed junk mail will be kept in the file folder.

Example:

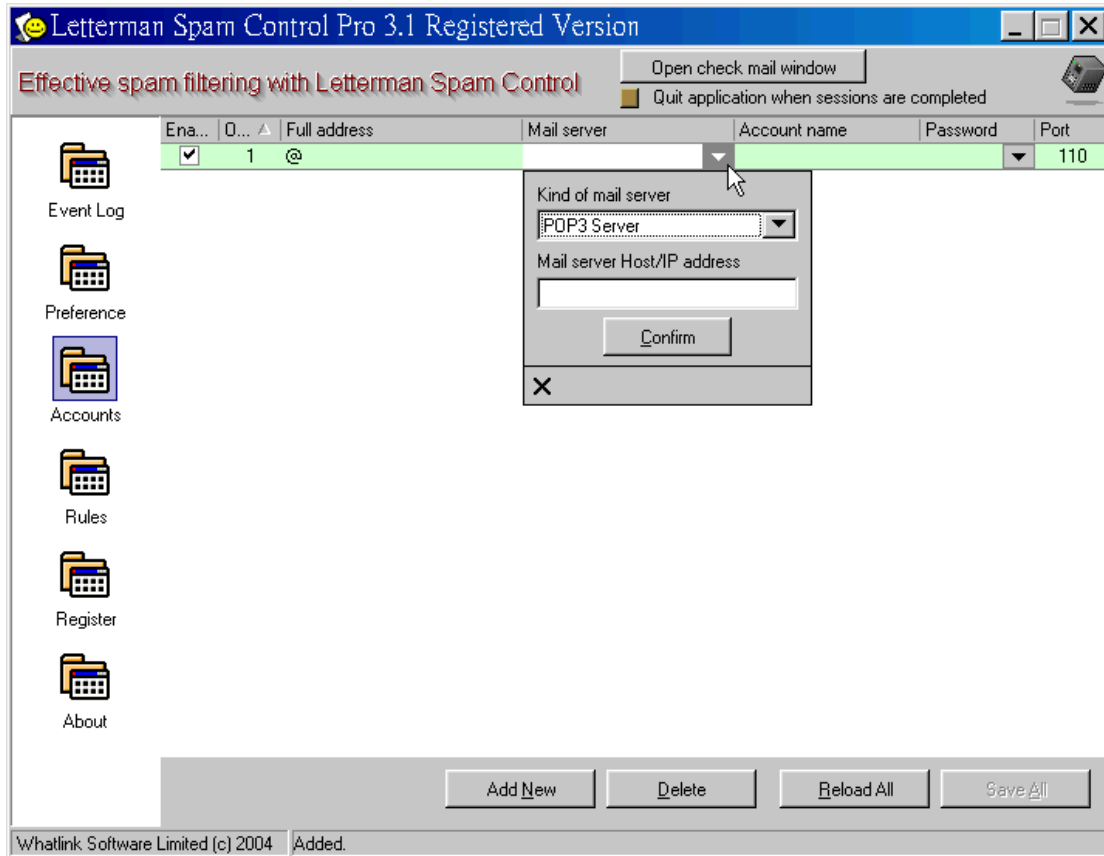
C:\Program Files\Whatlink\Letterman\Spam_archive\040803\g2c94g.eml

✧ *The default values after Letterman's proxy server installation:*

- ✓ *Proxy server's default operating port number is 46000*
- ✓ *Turn on the function of "intercepting the links in the mail".*
- ✓ *The function of packing junk mail into a CompactOne(tm) letter is not on by default. Please turn on this function yourself if needed.*

Set the Mailbox Accounts in Letterman Manually

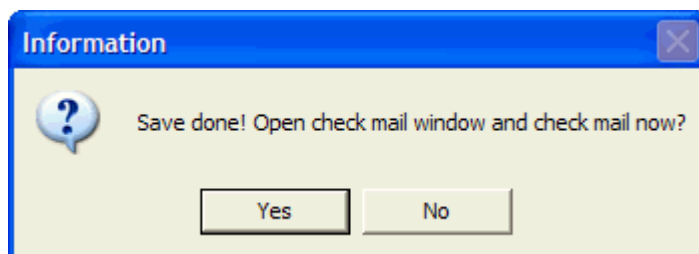
Start up Letterman and click Letterman's smile icon in the bottom right-hand corner of Windows.



Click the “Mailbox Account” icon on the left and then the “Add” button. When a row of newly-added accounts appear, click each item to set your account data.

For the kinds of incoming mail server, you can select POP3 server or Yahoo/MSN online email.

Press the “Save All” button after completion, and the system will ask whether or not to open the window right now and check the mail immediately.



Manually Set Outlook or Outlook Express to Filter out Mail via Proxy Server

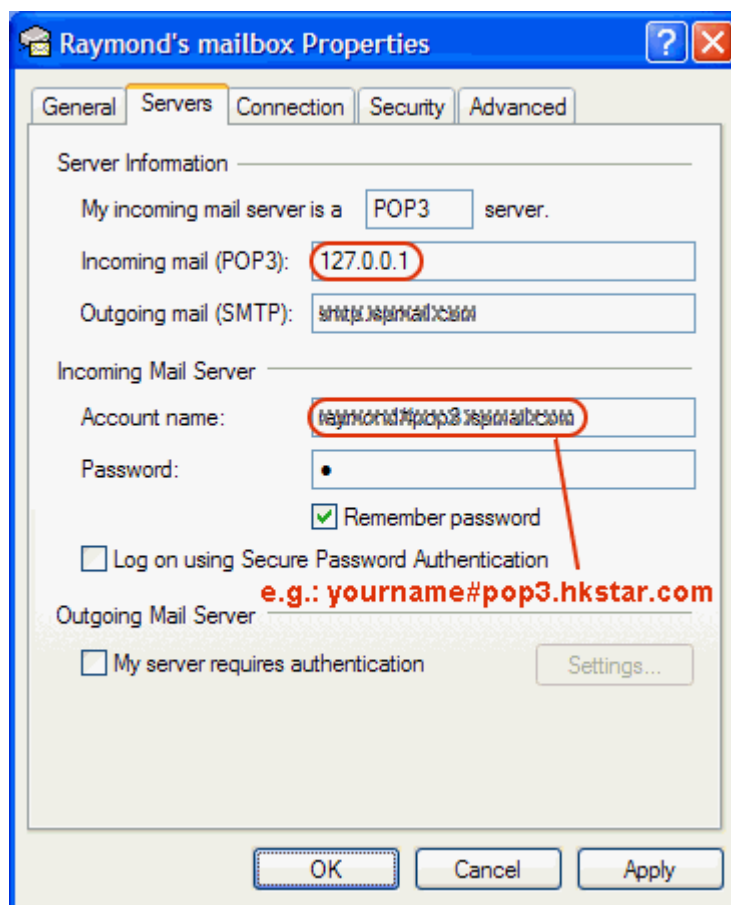
To begin with, please change Outlook or Outlook Express account settings as follows:

Servers tabs - Incoming mail (POP3): **127.0.0.1**

Servers tabs - Account name: your account name plus a “#” separator and then plus the original mail server name.

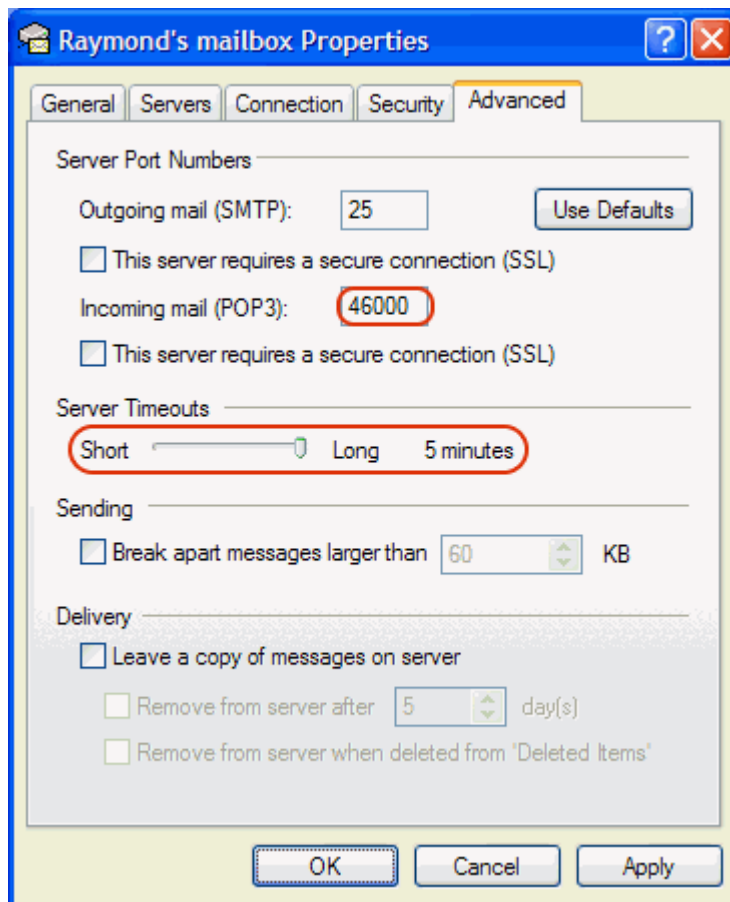
Example: **yourname#pop3.hkstar.com**

Note that the “#” separator can be changed in the “reception proxy configuration”.



Advanced tabs - Server Port Numbers - Incoming mail (POP3): **46000**

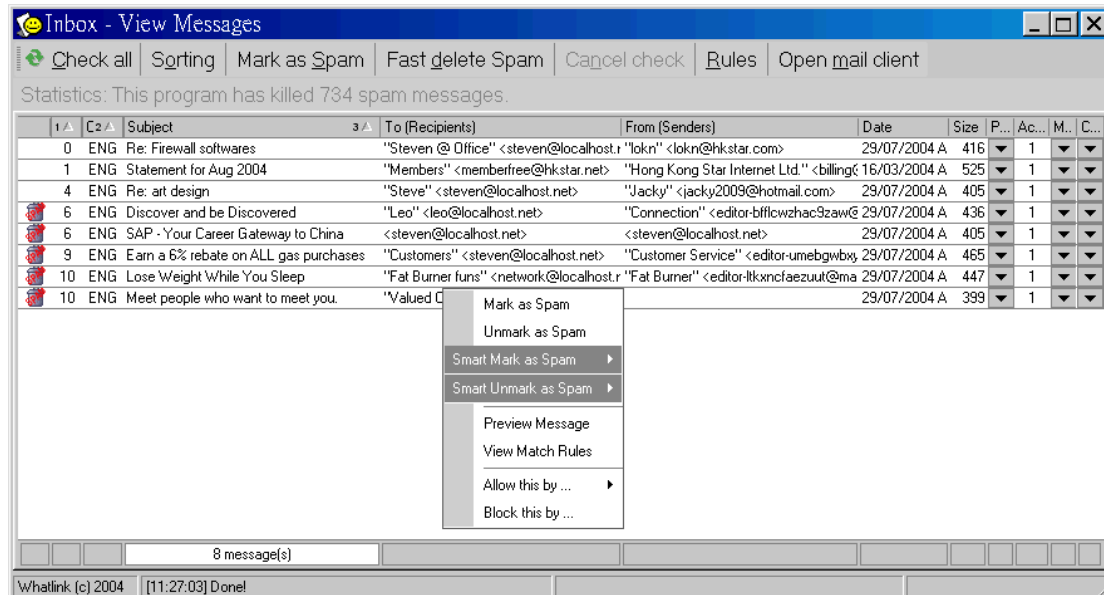
Advanced tabs – Server Timeouts: **5 minutes**



Press “OK” to complete the setting. After the completion of setting, you just need to use your original Outlook and Outlook Express software to collect letters and confirm that Letterman is running. You do not have to learn another set of mail software. Outlook and Outlook Express will automatically process junk mail via Letterman.

Letterman's User Interface

In-box Window



Toolbar in the In-box Window



Check new mail: check all the mailbox accounts that are set as “open/on”, and the letters collected will be displayed in the letter list zone.

Re-sorting: use the multiple built-in methods of sorting, namely, 1) junk grading 2) character coding 3) subject, to re-sort all letters.

Mark as junk: mark the selected letters as junk. Marking as junk mail does not automatically add records to rule, and you can consider “mark as junk” has the same meaning as “mark as to be deleted”.

Delete junk mail: connect to the mail server to delete all the letters that are marked as junk, but not to collect new letters. It has a fast connecting speed.

Cancel check: terminate the Internet connection in use.

Rules of filtering: display user-defined mail rules. You can add, delete or change rule settings.

Open email client: open the preset email software (for example, start up Outlook Express, which can be changed in the “preset email software” in the main configuration)

The Letter List Area in the In-box Window

Rank 1 ▲	Charset 2 ▲	Subject 3 ▲	To (Recipients)	From (Senders)	Date	Size	P...	Ac...	M...	C...
6	ENG	Discover and be Discovered	"Leo" <leo@localhost.net>	"Connection" <editor-bfflcwzhac9zaw@eros>	04/08/2004 PM	428	▼	1	▼	▼

You can press the left mouse button on the headings to sort the mail. Press and hold the <Shift> key and press the left mouse button on multiple headings to perform multiple sorting.

You can press and hold the left mouse button and drag the headings to arrange the order of the headings.

Letter icon: there will be a small icon ahead of each mail, which indicates that this mail has been marked as junk mail and will be deleted when the mail are checked next time.

Hint: the system will automatically mark letters as junk according to the rules of filtering, or you can select letters and mark them as junk mail at your discretion.

Letters that are marked as junk will not automatically add any rules of filtering, and you can consider “mark as junk” has the same meaning as “mark as to be deleted”.

Junk Grading, Character Coding, Mail Data, Content Preview, Detailed Appraisal Report and Establish Rules

Junk grading: the system will automatically grade the letters according to the rules of filtering. The higher the grade is, the letter is more likely to be junk mail.

Grade 0 represents letters from friends or electronic newspaper, and grade 1 or above represents letters from non-friends.

Character coding: automatically distinguish English, Simplified Chinese, Traditional Chinese, Japanese and Korean. It can be used for letter sorting or used in rules of filtering.

Subject: mail subject.

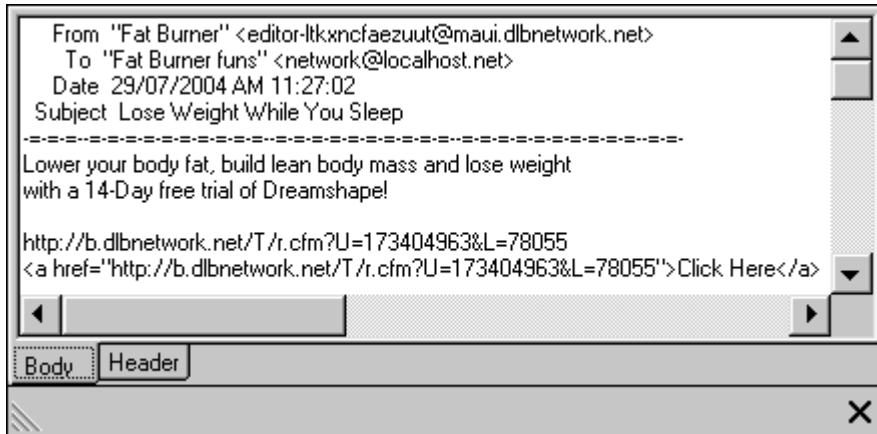
Send To (recipients): mail recipients.

From (sender): mail sender.

Date: date of mail

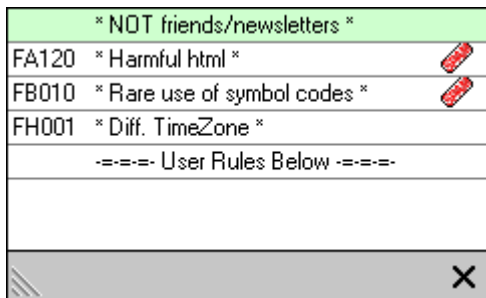
Size: mail size.

Content preview: preview the content and header of mail. You can set in the “main configuration” the number of downloaded rows of mail content text of each mail.

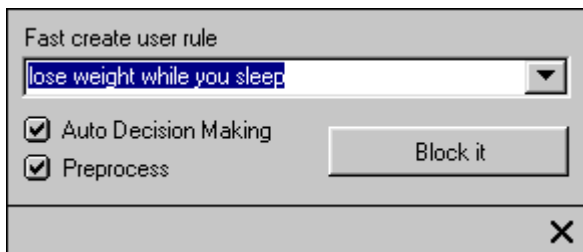


Account: the numbering of the mailbox account.

Detailed appraisal report: a report that tells you what features that the system used to judge this mail as junk mail. You can modify or individualize your own rules of filtering according to the rule number listed in this report.



Establish rules: establish new rules of filtering.



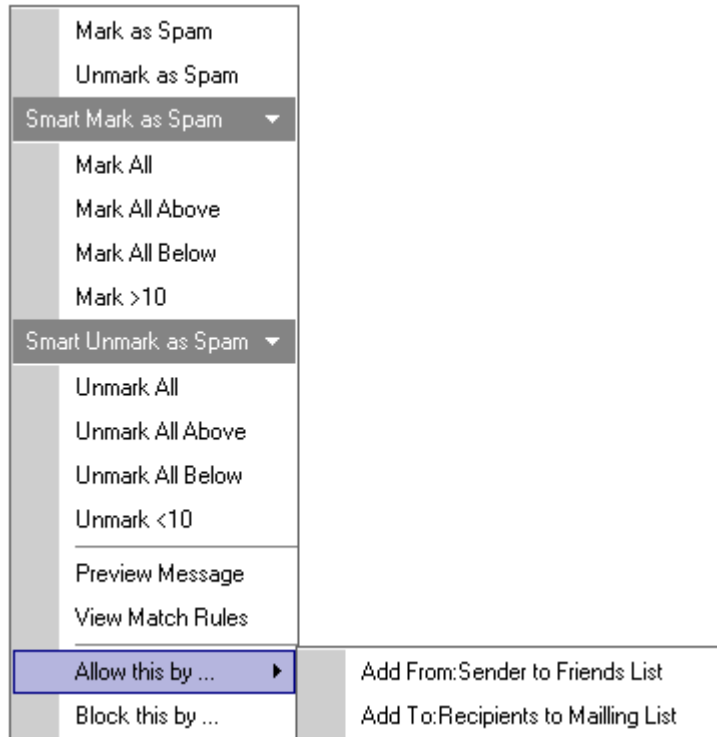
You can select the conditions of filtering (subject, recipients and sender) you want to establish, and then change the filtering character string at your discretion. Just press the “block this mail” button.

For example, select the item with the subject of “lose weight while you sleep”, and then change it into “lose weight”. Press the “block this mail” button to establish a new rule of filtering immediately.

Preprocessing: you can preprocess the character string prior to the filtering of the character string. For example, eliminate unwanted blanks or !#\$%... and etc, which allows the character string comparison to cover the different variations of the character string in a more comprehensive way. you can change the settings in the “preprocessing 1 meaning” in the rule grading configuration.

Right Mouse Button Pop-up Menu

After a letter is selected in the letter list zone, press the right mouse button, and then the following menu options will appear.



Mark as junk: mark the letters selected as junk. Marking as junk mail does not add any rule of filtering, and you can consider “mark as junk” has the same meaning as “mark as to be deleted”.

Mark as non-junk: mark the letters selected as non-junk.

Fast mark as junk: mark as junk with different conditions.

Fast mark as non-junk: mark as non-junk with different conditions.

Content preview: preview the content and header of mail. You can set in the “main configuration” the number of downloaded rows of mail content text of each mail.

Detailed appraisal report: a report that tells you what features that the system used to judge this mail as junk mail. You can modify or individualize your own rules of filtering according to the rule number listed in this report.

Approve this mail: establish new approved rules.

Block this mail: establish new block rules.

Other Letterman Configuration Menus

Press the right mouse button on the smile icon



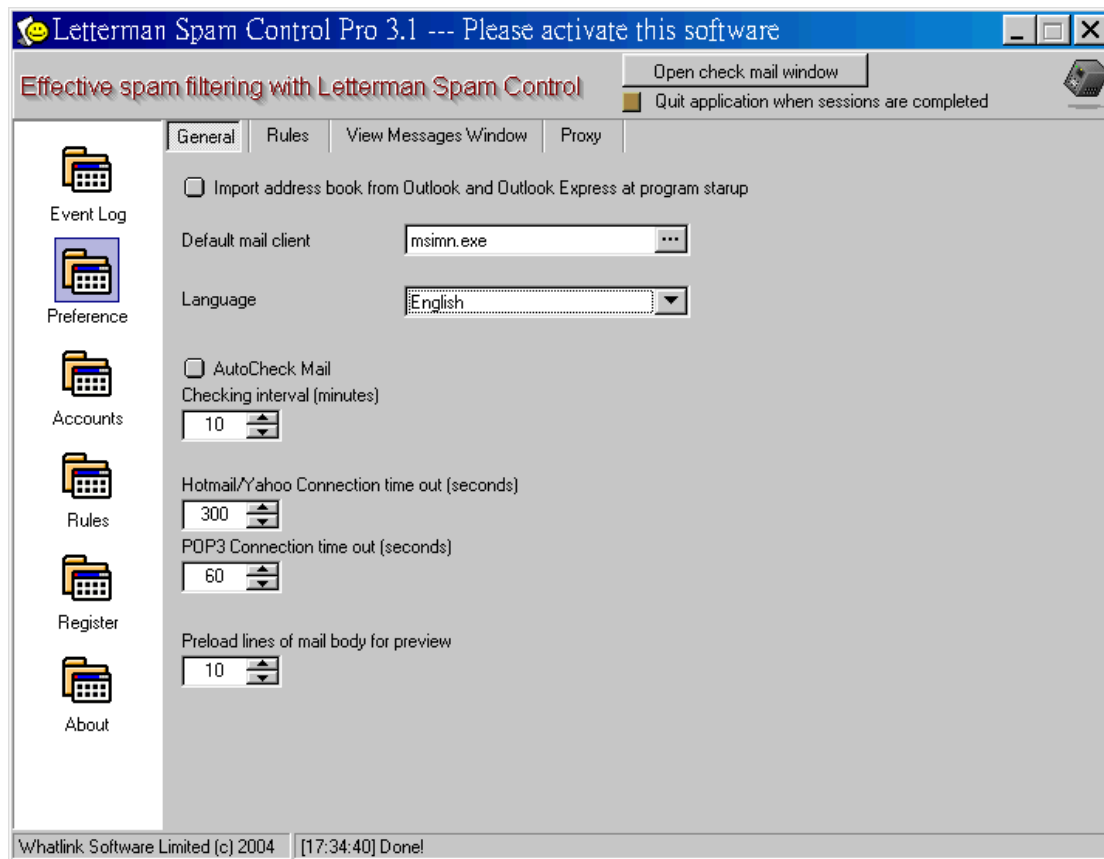
in the bottom

right-hand corner of Windows. The following window pops out:



Select the “Configuration”.

The Letterman configuration menu appears as follows.



Icon of Event Log

With it, you can view the mail event log, proxy event log and letter deletion (delete junk mail) log.

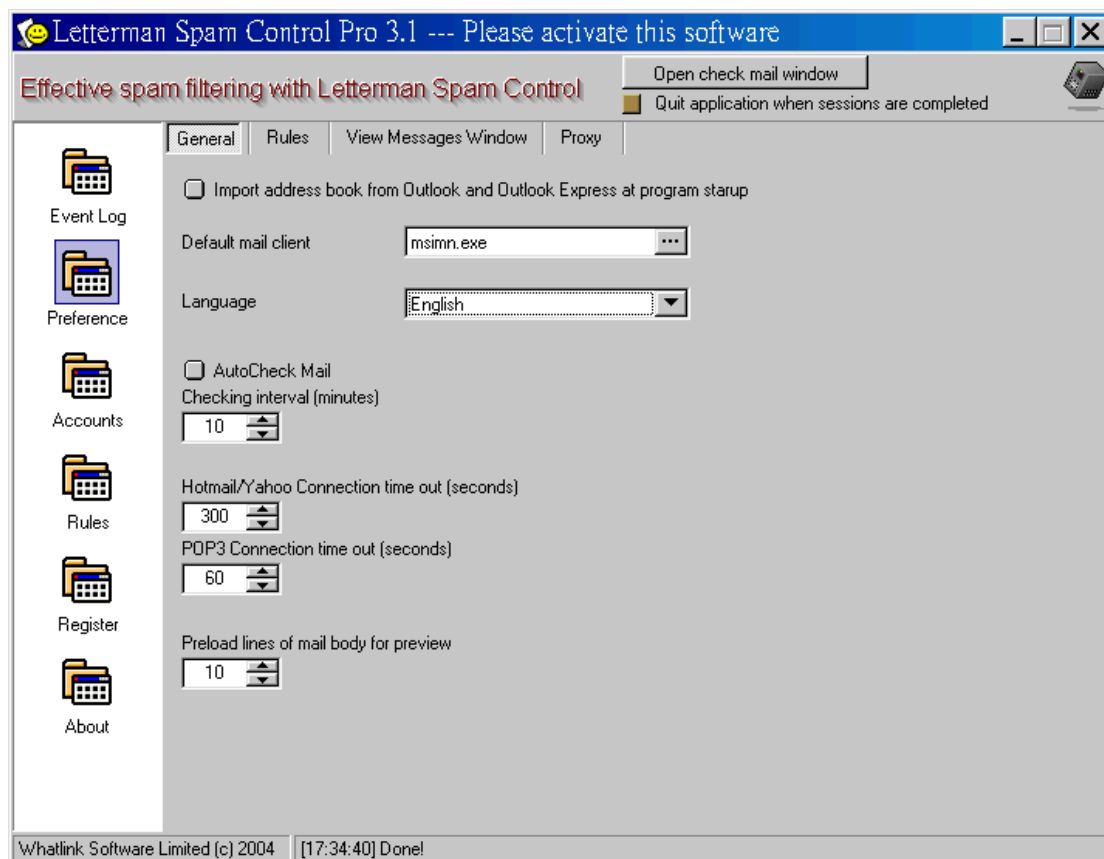
Icon of Configuration Wizard

It can start up the Configuration Wizard. Refer to the “Letterman’s Setting Wizard” in this document above.

Icon of Configuration

It can change mail configuration, rule grading configuration, in-box window configuration and the reception proxy configuration.

Items of main configuration



Set whether or not to automatically import email addresses by Outlook and Outlook Express when Letterman starts up.

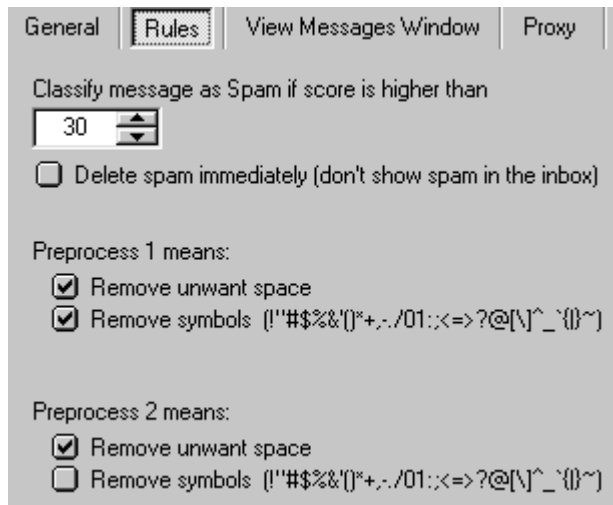
Present email software: set in the Letterman interface which preset email software shall be open.

Check email regularly: collect and filter new mail regularly in the Letterman interface.

Set “the number of downloaded rows of mail content text of each mail”. The system will use this set value to decide the number of downloaded rows of mail content text

and header, and then filter the mail according to the mail content. Users can preview in the letter list zone the mail content and header downloaded.

Items of rule grading configuration

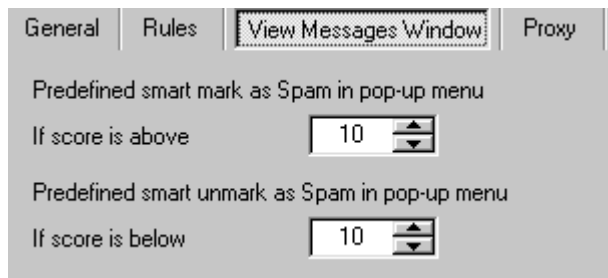


Mark as junk mail if the junk grade exceeds: the system will grade each letter according to the rules of filtering. If, after the system has completed its inspection of the rules of filtering, the letter is not marked as junk, but its grade is higher than this set value, then mark this mail directly as junk mail.

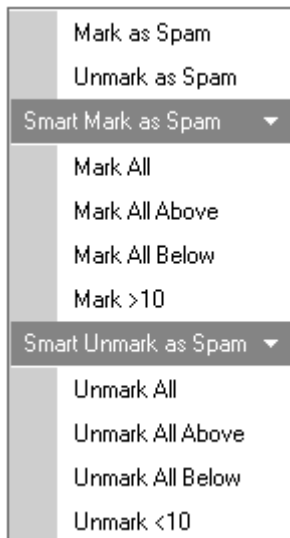
Delete junk mail directly on the server (do not appear in the in-box): do not display the junk mail marked by the system in the in-box (the letter list zone), and just delete the junk mail directly on the server. Warning: please use this option with care.

Preprocessing 1 and 2 meaning: you can preprocess the character string prior to the filtering of the character string. For example, eliminate unwanted blanks or !#\$%... and etc, which allows the character string comparison to cover the different variations of the character string in a more comprehensive way. This function will also be applied in “conditions in the user-defined rules” and “rule established in the letter list” at the same time.

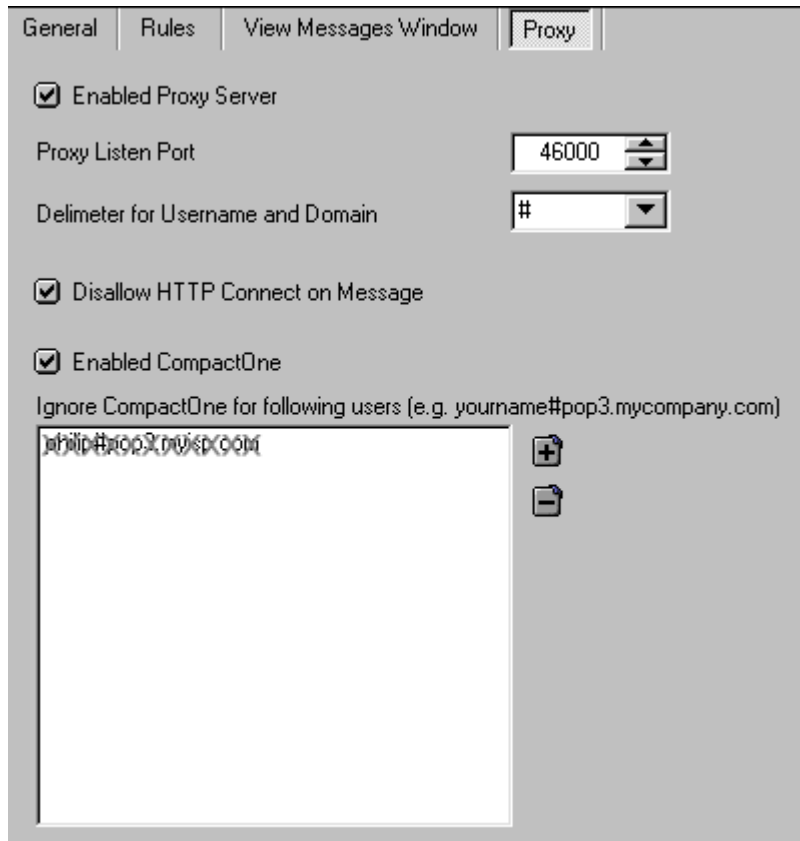
Items of in-box window configuration



Define fast marking: in the letter list zone, set the grade number in the pop-up menu.



Items of reception proxy configuration



Start up the proxy server: if you want to use Outlook or Outlook Express (or other POP3 email software), via Letterman, to intercept the links in the mail or filter out junk mail, you must firstly start up the proxy server. After the completion of setting, you just need to use your original Outlook and Outlook Express software to collect letters and confirm that Letterman is running. You do not have to learn another set of mail software. Outlook and Outlook Express will automatically process junk mail via Letterman.

Proxy's operating port number: proxy server's listening port number.

Separator (username#domain.com): how to read the account name in Outlook or Outlook Express after setting (i.e., the original account name plus a separator and then plus the original incoming mail POP3 server name)

Do not allow the HTTP links in the letters: by intercepting the links in the mail, prevent ill-intentioned Web Bug mail from gathering your private information. (Recommend to check this item)

Start up CompactOne: use Letterman's proxy server to filter out junk mail, and pack all the junk mail into a CompactOne (tm) letter.

The following accounts processed other than by CompactOne:

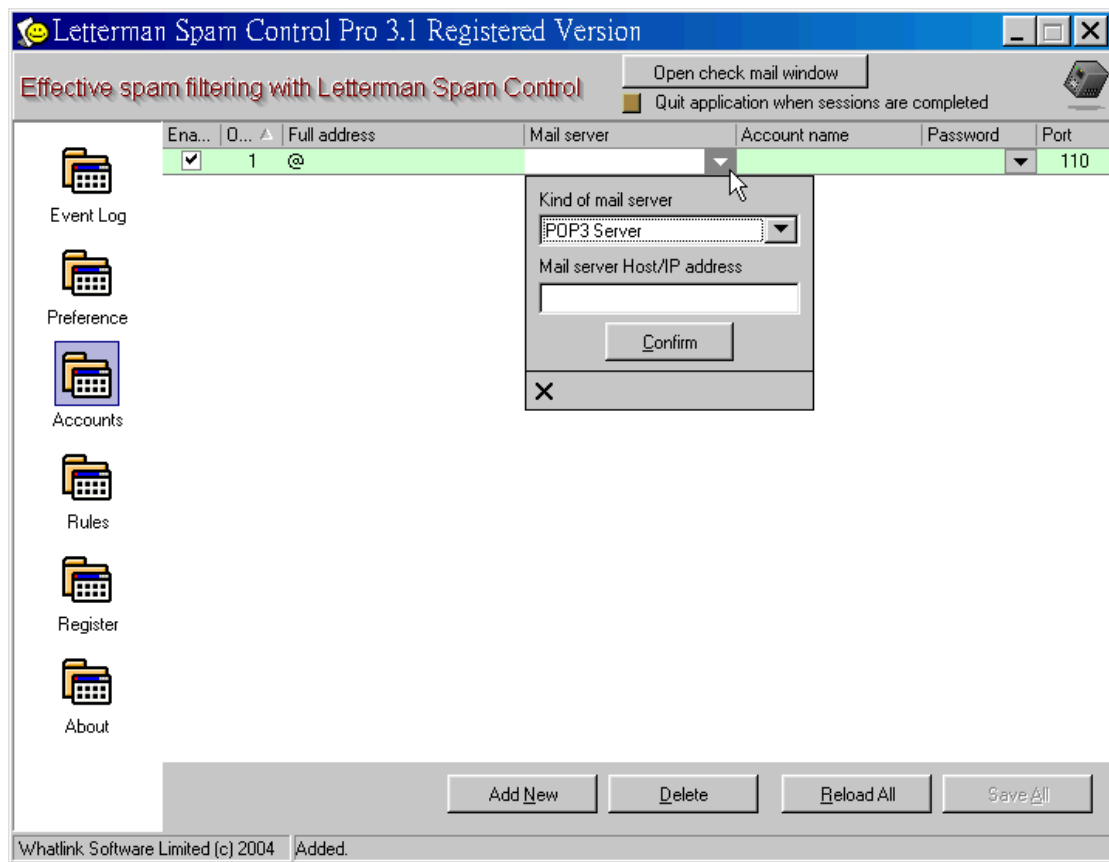
You can set email accounts not to be filtered by CompactOne proxy server.

For example, you have some email accounts that often receive potential or unknown clients from different sources. Corporation's support and info email accounts will often receive letters from some unknown clients. If you do not want these email accounts to be filtered by CompactOne proxy server, you can add these email accounts here.

Please use the format `yourname#pop3.mycompany.com` for the email accounts added, and this format shall be the same as the set value you set in the "server item - account name" in Outlook/Outlook Express.

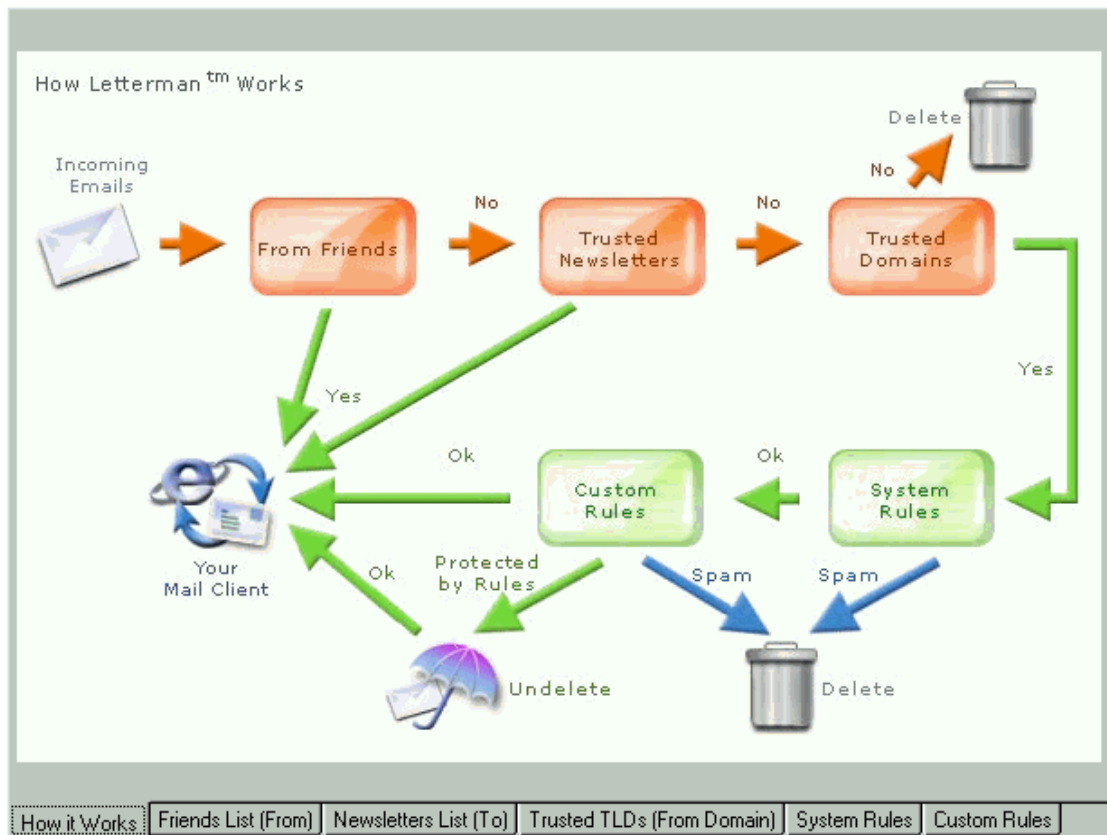
Icon of Mailbox Account

You can add, change or delete the accounts used in Letterman. Click each item to set it.



Icon of Rule

You can click pattern to skip over pages quickly.



The operation of rules of filtering

Check whether the mail sender and recipients are in the approved friend list. If they are not found in this list, go on to the next comparison;

Check whether the domain of the mail sender is in the approved domain list. If it is not found, mark this letter as junk; if it is found in the list, go on to the next comparison;

Compare this letter with all “the system’s built-in rules” selected, and the system will grade the letter according to the rules and decide whether or not to mark it as junk mail. If it can pass all the rules, go on to the next comparison;

Compare this mail with all the selected “user-defined rules”, the system will grade the letter according to the rules and decide whether or not to mark it as junk or to protect it. If a letter has passed all the rules, it is generally a normal letter.

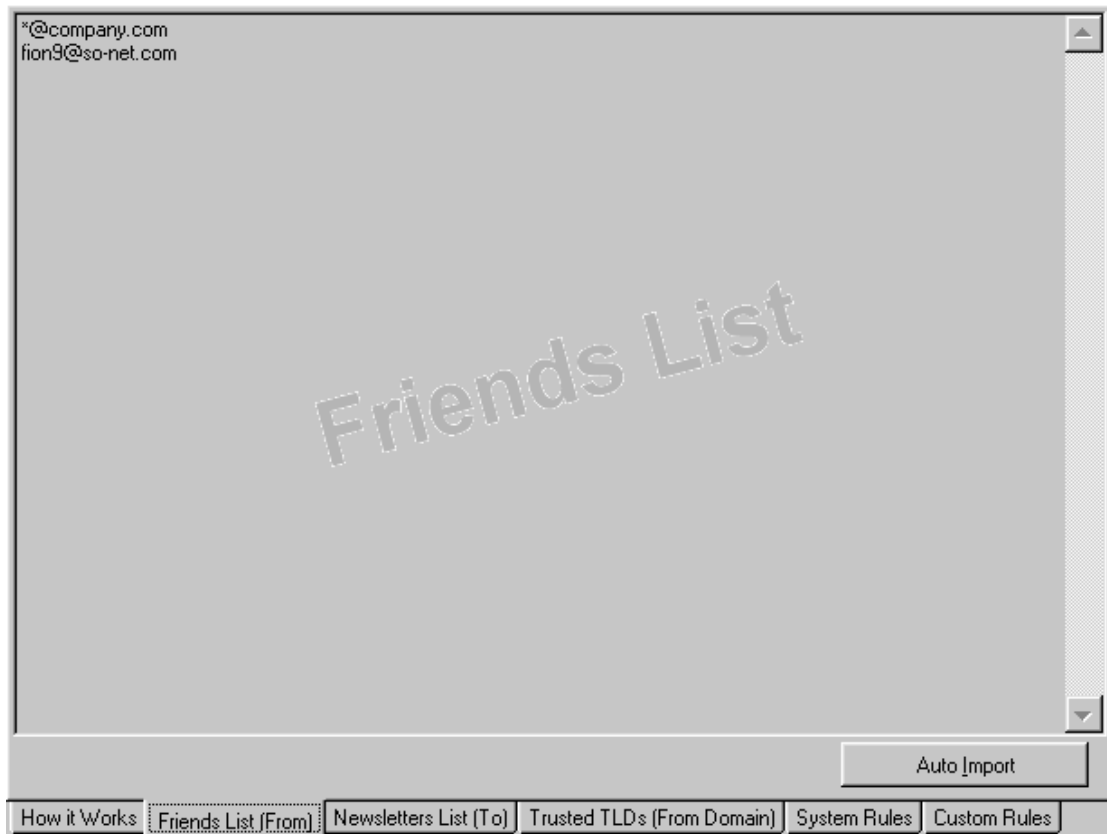
Friend list (sender)

Approved sender list. You can use * and ?

For example: set to approve any sender is mail from inside you company:

***@companyname.com.**

Press “automatically import the addresses” to import addresses from Outlook/Outlook Express and add them to the list.



Approved electronic newspaper (recipients)

Approved recipients list. You can use * and ?

For example, approve the electronic newspaper you have subscribed to. As generally the recipients of each electronic newspaper are all the same, for example, Yahoo Video Games electronic newspaper's recipients are: videogames@yahoogroups.com, but the senders are different each time. Therefore, if you want to approve this electronic newspaper, we must add the email address to this list rather than to the "friend list".



Approved domain (sender domain)

Check the sender domain, and mark all the letters from unproved domains as junk.

Enable email domain checking
Spam rank if domain is not trusted: Mark as Spam Save Change

Generic Domains (gTLDs)		Country-Code Domains (ccTLDs)		
Trusted	Domain	Trusted	Domain	Country
<input checked="" type="checkbox"/>	.com	<input type="checkbox"/>	.gg	Guernsey
<input checked="" type="checkbox"/>	.net	<input type="checkbox"/>	.gh	Ghana
<input checked="" type="checkbox"/>	.org	<input type="checkbox"/>	.gi	Gibraltar
<input checked="" type="checkbox"/>	.edu	<input type="checkbox"/>	.gl	Greenland
<input checked="" type="checkbox"/>	.gov	<input type="checkbox"/>	.gm	Gambia
<input type="checkbox"/>	.aero	<input type="checkbox"/>	.gn	Guinea
<input type="checkbox"/>	.biz	<input type="checkbox"/>	.gp	Guadeloupe
<input type="checkbox"/>	.coop	<input type="checkbox"/>	.gq	Equatorial Guinea
<input type="checkbox"/>	.info	<input type="checkbox"/>	.gr	Greece
<input type="checkbox"/>	.int	<input type="checkbox"/>	.gs	South Georgia and the South Sandwich Islands
<input type="checkbox"/>	.mil	<input type="checkbox"/>	.gt	Guatemala
<input type="checkbox"/>	.museum	<input type="checkbox"/>	.gu	Guam
<input type="checkbox"/>	.name	<input type="checkbox"/>	.gw	Guinea-Bissau
<input type="checkbox"/>	.pro	<input type="checkbox"/>	.gy	Guyana
		<input checked="" type="checkbox"/>	.hk	Hong Kong
		<input type="checkbox"/>	.hm	Heard and McDonald Islands
		<input type="checkbox"/>	.hn	Honduras
		<input type="checkbox"/>	.hr	Croatia/Hrvatska
		<input type="checkbox"/>	.ht	Haiti
		<input type="checkbox"/>	.hu	Hungary
		<input type="checkbox"/>	.id	Indonesia

How it Works | Friends List (From) | Newsletters List (To) | **Trusted TLDs (From Domain)** | System Rules | Custom Rules

Unapproved domains are not allowed to send letters to you: if it is not checked, then the system will skip this kind of filtering check. (The system allows .com/.net/.org/.edu/.gov. by default. For other domains (such as .hk/.cn/.de and etc), please select approval or not at your discretion) Press the “inspection” button to view detailed settings.

Junk grading: if the domain of the mail sender is not in the approved domain list, the system will add the set value as the junk grade to this letter. (The above-mentioned “unapproved domains are not allowed to send letters to you” must be turned on.)

Also mark as junk: if the mail is not in the approved domain list, then, in addition to adding the grade, it will also mark this letter as junk mail. (The above-mentioned “unapproved domains are not allowed to send letters to you” must be turned on.)

Save: save the settings.

The system's built-in rules

The built-in rules of filtering that are installed with the system. They are all on by default. You can use the Configuration Wizard to set them quickly or turn them on or off or decide whether or not to mark as junk mail as needed at your discretion.

Enabled	ID	Rule Description	Action
<input checked="" type="checkbox"/>	FB010	Subj: rare use symbol	3 垃圾
<input checked="" type="checkbox"/>	FB011	FromName: rare use symbol	3 垃圾
<input checked="" type="checkbox"/>	FB012	SendToName: rare use symbol	3 垃圾
<input checked="" type="checkbox"/>	FB020	Subj: digit gap	2 垃圾
<input checked="" type="checkbox"/>	FB025	Subj: space gap	2 垃圾
<input checked="" type="checkbox"/>	FB026	Subj: plenty space	3 垃圾
<input checked="" type="checkbox"/>	FB027	Subj: repeating characters	2 垃圾
<input checked="" type="checkbox"/>	FB030	Subj: uncommon capital letters A	3 垃圾
<input checked="" type="checkbox"/>	FB031	Subj: uncommon capital letters B	3 垃圾
<input checked="" type="checkbox"/>	FB040	FromAddr: invalid email A	2 垃圾
<input checked="" type="checkbox"/>	FB041	FromAddr: invalid email B	3 垃圾
<input checked="" type="checkbox"/>	FB042	FromAddr: invalid email C	2 垃圾
<input checked="" type="checkbox"/>	FB043	FromAddr: invalid email D	1
<input checked="" type="checkbox"/>	FB044	FromAddr: invalid email E	3 垃圾
<input checked="" type="checkbox"/>	FB048	ToAddr: invalid email A	2
<input checked="" type="checkbox"/>	FB049	Dictionary Attacks	2 垃圾
<input type="checkbox"/>	FE001	Traditional Chinese (BIG5)	1
<input checked="" type="checkbox"/>	FE002	Simplified Chinese (GB)	2 垃圾
<input checked="" type="checkbox"/>	FE003	Japanese	2 垃圾
<input checked="" type="checkbox"/>	FE004	Korean	2 垃圾
<input checked="" type="checkbox"/>	FH001	Different TimeZone	3
<input checked="" type="checkbox"/>	FH050	Not by Outlook or Express	1
<input checked="" type="checkbox"/>	FH051	Not by common mail software	2 垃圾
<input checked="" type="checkbox"/>	FH060	Fake a mail software A	3 垃圾
<input checked="" type="checkbox"/>	FH061	Fake a mail software B	3 垃圾

How it Works Friends List (From) Newsletters List (To) Trusted TLDs (From Domain) System Rules Custom Rules

Turn on: turn on this rule of filtering. If it is not turned on, the system will skip this item of inspection.

Serial number: system number. This serial number will also appear in the “detailed appraisal report”.

Rule description: description of the mode of filtering.

Action: you can set the action of rules at your discretion.

Save: save the settings.



A dialog box for configuring spam filtering. It contains a 'Spam rank' dropdown menu with the value '2' selected. Below it is a checked checkbox labeled 'Mark as Spam'. At the bottom is a 'Confirm' button. A close button (X) is located in the bottom-left corner.

Junk grading: if the mail can not pass this rule of filtering, add this grade.

Also mark as junk: if the mail can not pass this rule of filtering, in addition to adding the grade, it will also mark the letter as junk mail.

User-defined rules

The rules of filtering that can be added or deleted at users' discretion.

Ena...	Name	Criteria	Actions
<input checked="" type="checkbox"/>	blank from	F=""	3 Spam
<input checked="" type="checkbox"/>	blank subject	S=""	3 Spam
<input checked="" type="checkbox"/>	blank to	T=""	3 Spam

Buttons: Validate Rules, Add New, Delete, Reload All, Save All

Navigation: How it Works, Friends List (From), Newsletters List (To), Trusted TLDs (From Domain), System Rules, Custom Rules

Turn on: turn on this rule of filtering. If it is not turned on, the system will skip this item of inspection.

Rule name: simple description of your user-defined rules.

Conditions: the conditions of filtering of rules. You can select single condition of filtering or multiple condition of filtering.

Criteria A

From Address: Preprocess 1
 Preprocess 2
 Ignore Case

Only Criteria A Criteria A .and. Criteria B Criteria A .or. Criteria B

Criteria B

Subject: Preprocess 1
 Preprocess 2
 Ignore Case

A rule of filtering can be divided into two groups of conditions of filtering, i.e. condition A and condition B.

Single condition of filtering is to use the condition A only.

As for multiple condition of filtering, you can either select that both the condition A and the condition B shall be met at the same time, or select either of them shall be met.

Source of comparison: the place in the mail concerned used for comparison, such as sender name, sender address, subject, copy, mail dispatching procedure and etc.

Method of comparison: how to compare the character strings, such as by including, equal to, equal to blank, excluding and etc.

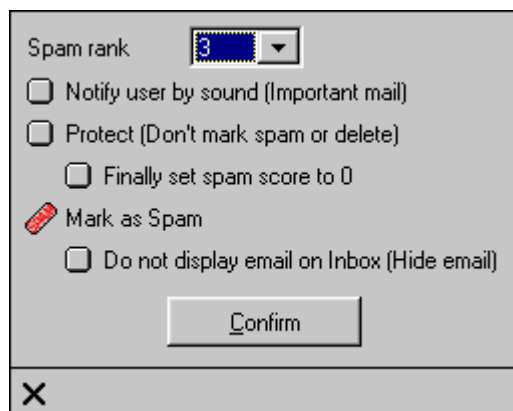
Comparing character string: the character string you give.

Preprocessing: you can preprocess the character string prior to the filtering of the character string. For example, eliminate unwanted blanks or !#\$%... and etc, which allows the character string comparison to cover the different variations of the character string in a more comprehensive way.

Ignore the difference between the upper case and the lower case: whether or not to ignore the difference between the upper case and the lower case in character string comparison.

Save: save the settings.

Action: you can set the action of rules at your discretion.



Junk grading: if the mail can not pass this rule of filtering, add this grade.

Reminding tone for important mail: remind user with special tone.

Protect the mail (not mark it as junk or delete it): used for letter protection, which can protect letters from being deleted.

Reset junk grade to zero: reset the grade and sort the letter at frontmost.

Also mark as junk: if the mail can not pass this rule of filtering, in addition to adding the grade, it will also mark the letter as junk mail.

Letters will not be displayed in the mailbox (concealed letters): do not display this letter, for example, conceal some junk mail that will be received regularly.

Save: save the settings.

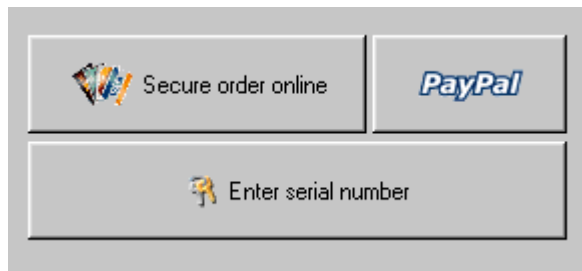
Icon of Online Updating

Automatically check the version in use, decide whether or not the system needs to be updated, and directly online update .exe file, multilingual files and filtering rule files in the system.

Icon of Registration

With it, you can perform online payment or launch to register this software.

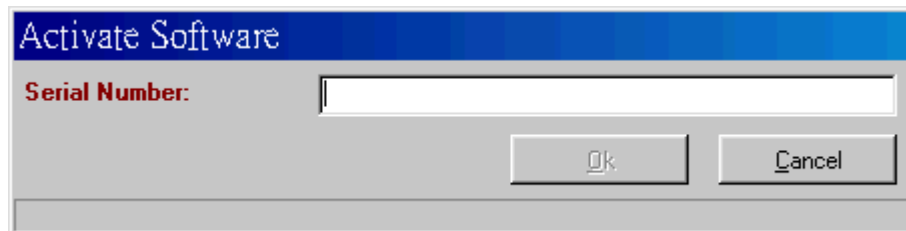
Register => Activate



How to activate Letterman by enter serial number

Press the “Enter serial number” button in the “registration items”.

Just input your Letterman serial number into the window as shown below. In registration, please wait a minute and confirm that the computer has connected to the Internet.



Icon of About

View Letterman’s copyright and Version



Rule Example A: Collect Letters in Traditional Chinese and English Only (Use the Setting Wizard)

I use private email address and do not want to receive mail in simplified Chinese, and as for other rules, just use its built-in settings.

- 1) To begin with, press the Configuration Wizard.
- 2) Select “system filtering rule configuration wizard”.
- 3) Select “This is self-use/personal email address”. Press “next”.
- 4) Check:
 - ✓ Unapproved domains/countries are not allowed to send letters to you
 - ✓ Start up proxy server
 - ✓ Do not allow the HTTP links in the letters
 - ✓ Start up CompactOnePress “next”.
- 5) Check:
 - ✓ Simplified Chinese character
 - ✓ Japanese character
 - ✓ Korean characterDo not check Traditional Chinese character
Press “next”.
- 6) Select the type of key word filtering as needed. If not checked, it means not to filter out this kind of key words. Press “Next” to continue.
- 7) Press “Next” to complete.
- 8) You can collect letters either in Outlook/Outlook Express (you need to firstly change your Outlook/Outlook Express settings. You can use Letterman’s Configuration Wizard to set Outlook/Outlook Express quickly) or in the in-box window of Letterman.

Rule Example B: Do not Receive Mail in Simplified Chinese

I just do not want to receive all the mail in simplified Chinese, and all the other letters shall be kept.

- 1) In the “approved domains (sender domain)” in the “Rules”, do not check “unapproved domains are not allowed to send letters to you”.
- 2) Open only the “FE002” item in the “system’s built-in rules” and close all the other

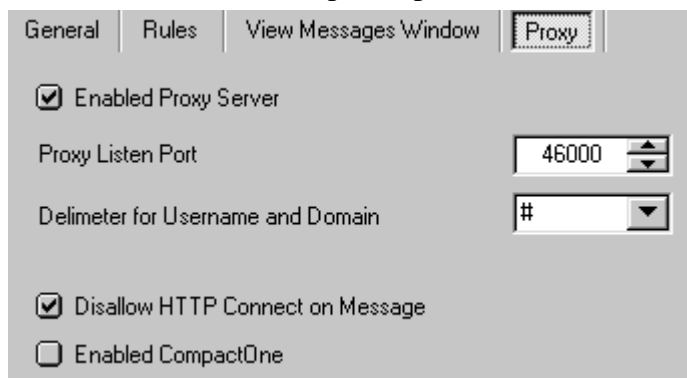
items.

- 3) Close all the items in the “user-defined rules”. Press “Save All”.
- 4) You can collect letters either in Outlook/Outlook Express (you need to firstly change your Outlook/Outlook Express settings. You can use Letterman’s Configuration Wizard to set Outlook/Outlook Express quickly) or in the in-box window of Letterman.

Rule Example C: Do not Allow Unapproved Domains and Intercept the Links in the Mail

I will receive mail from .hk and common .com/.net domains only, and mail from other unapproved domains are not allowed to be collected, in addition, I want to intercept the links in the mail to prevent ill-intentioned mail that contains web bugs from gathering personal information.

- 1) In the “approved domains (sender domain)” in the “Rules”, check “unapproved domains are not allowed to send letters to you” and select the general top-level domains (gTLDs) and country-code top-level domains (ccTLDs) you trusted. Press “Save”.
- 2) Close all the items of “the system’s built-in rules”.
- 3) Close all the items in the “user-defined rules”. Press “Save All”.
- 4) Confirm that the “proxy server” in the “reception proxy configuration” of “configuration” has started up.
- 5) Check “Do not allow the HTTP links in the letters”.
- 6) Do not check “start up CompactOne” as follows:

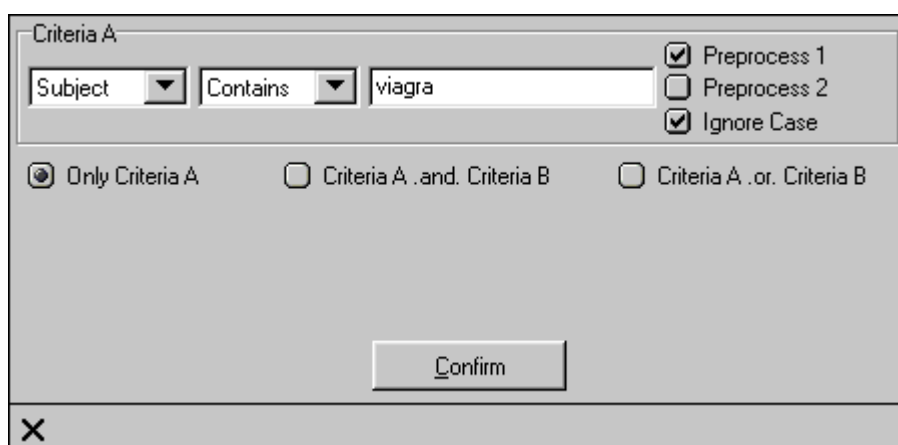


- 7) You can collect letters either in Outlook/Outlook Express (you need to firstly change your Outlook/Outlook Express settings. You can use Letterman’s Configuration Wizard to set Outlook/Outlook Express quickly) or in the in-box window of Letterman.

Rule Example D: Allow the Reception of Mail with Subject that Contains a Certain Character string

I have been buying and selling medicines Viagra and will now and then receive email that contains the word “Viagra”. How to set not to filter out this word?

- 1) Press “Add” in the “user-defined rules”.
- 2) Change the rule name.
- 3) Click the data you have just added, and input the following conditions:



Criteria A

Subject Contains viagra

Preprocess 1
 Preprocess 2
 Ignore Case

Only Criteria A Criteria A .and. Criteria B Criteria A .or. Criteria B

Confirm

- 4) Please select “Subject” as the source of comparison and select “Include” as the method of comparison. Please key in viagra as the comparing character string.
- 5) Check “Preprocessing 1” and “ignore the difference between the upper case and the lower case.”
- 6) Press “Confirm”.
- 7) The action of inputting the rules is as follows:



Notify user by sound (Important mail)

Protect (Don't mark spam or delete)

Finally set spam score to 0

Mark as Spam

Do not display email on Inbox (Hide email)

Confirm

- 8) Please select junk grade as 0.
- 9) Check “Protect this mail” and “Reset the junk grade to zero”.
- 10) Press “Confirm” and then “Save All”.
- 11) You can collect letters either in Outlook/Outlook Express (you need to firstly

change your Outlook/Outlook Express settings. You can use Letterman's Configuration Wizard to set Outlook/Outlook Express quickly) or in the in-box window of Letterman.