

WTM-N28 Board

supports Intel ATOM Processor

with POWER DC

/2*RTL8111E LAN/1*SATA/ 6*COM / 1*DDR3

SODIMM/1*SIM/1*MINI-PCIE/1*MINI-SATA

User Manual

Copyright 2013

All Rights Reserved.

Manual's first edition:

For the purpose of improving reliability, design and function, the information in this document is subject to change without prior notice and does not represent a commitment on the part of the manufacturer.

In no event will the manufacturer be liable for direct, indirect, special, incidental, or consequential damages arising out of the use or inability to use the product or documentation, even if advised of the possibility of such damages.

This document contains proprietary information protected by copyright. All rights are reserved. No part of this manual may be reproduced by any mechanical, electronic, or other means in any form without prior written permission of the manufacturer.

Trademarks

WTM-N28 is a registered trademarks of WTM; IBM PC is a registered trademark of the International Business Machines Corporation; Pentium is a registered trademark of Intel Technologies Inc; Award is a registered trademark of Award Software International Inc; other product names mentioned herein are used for identification purposes only and may be trademarks and/or registered trademarks of their respective companies.

Specifications

CPU	INTEL® Atom Dual-Core Processor D2550 CPU (32nm, 1.86GHz, 1024MB L2 Cache)
Chipset	INTEL® Atom D2550/D2500 + NM10
Memory	1 * 204-pin DIMM Sockets for un-buffered Single Channel DDR3 800/1066/1333 SDRAM up to 4GB
Expansion Slots	1* Mini PCI-E socket , 1*SIM
Storage	1* Serial ATA2 3Gb/s connectors 1 * Mini-SATA connector
Audio	Realtek ALC662
Ethernet LAN	2*RTL8111E-VL LAN
LVDS	Onboard 24-bit single channel LVDS connector
USB	Embedded 8 * USB 2.0
Special Features	Intel Cedarview Processor Support DC FAN Support CPU Smart Fan
Rear Panel I/O	1 * DC 12V IN port 1* Power button 1 * HDMI port 1 * VGA port 2 * RJ-45 port 2 * USB 2.0 ports 1 * Audio I/O ports (Mic and Line-out) 1 * LED (Power LED and HDD LED)
Internal I/O	3* USB 2.0 ports 1 * 12V DC 4pin in 3 * NB / Chassis Fan connectors; 1 * VGA header 2*6 2.54mm 1 * AUDIO header 1* GPIO header 1* Parallel connector 1* COM3-6(RS232) connector 2* COM(RS232) connector (COM1 and COM2) 1 * MINI PCI-E connector 1 * MINI_SATA connector 1*SIM socket 1* 24-bit single channel LVDS connector
BIOS	AMI 16MB SPI Flash ROM
Functional	ATM, Automation, medical Equipment, Security, Networking, POS, General Application, Gaming Machine, Transportation
Packing	Color Box Dimension 200(W) x 200(D) x 70(H)mm
Certificate	CE, FCC, RoHS
Temperature	Operating within 0~40 centigrade (Suggest to use system FAN) Storage within -20-85 centigrade
Form Factor	EPIC Form Factor (16.5cm x 11.5cm)

Package Contents

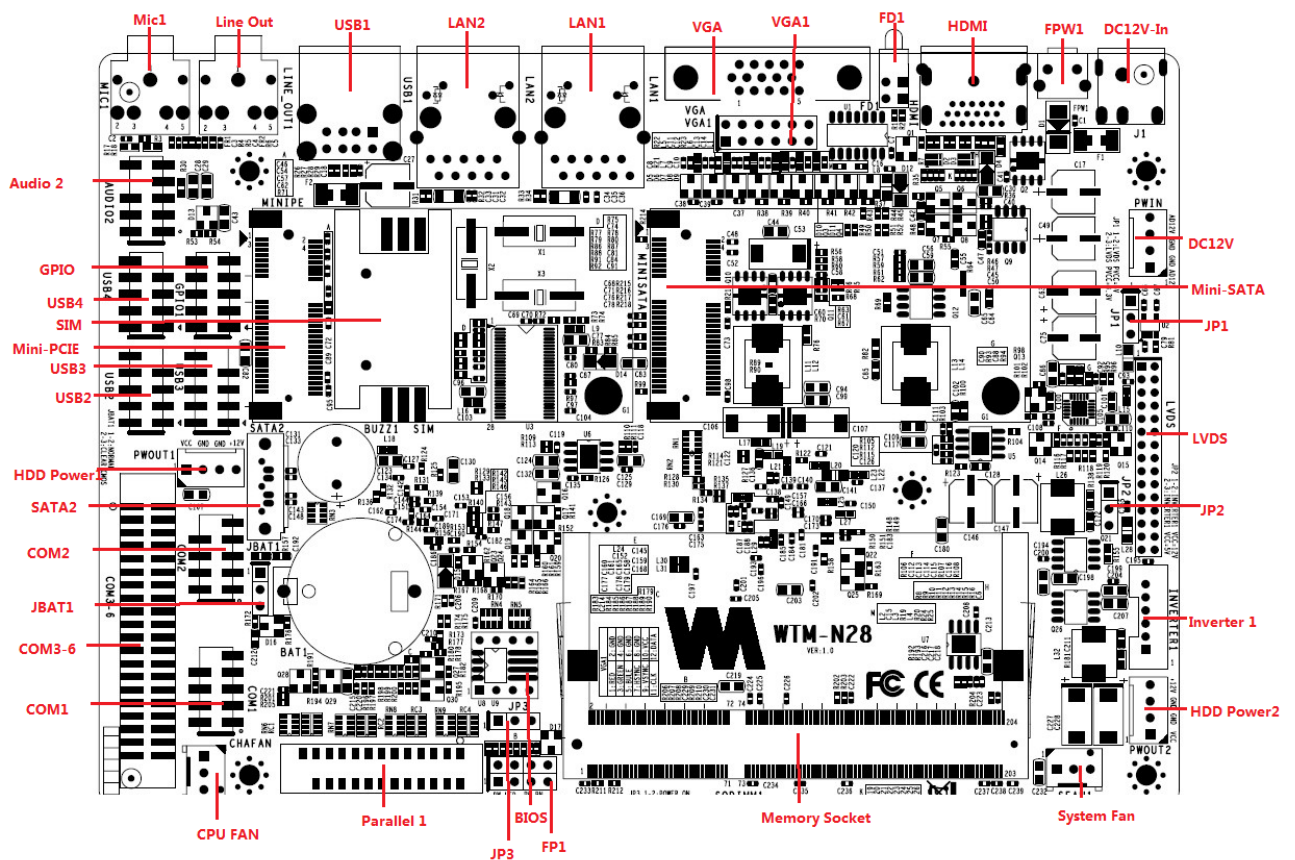
Check if the following items are included in the package.

1 * WTM-N28 board

1 * Quick Manual


1 * Software Utility CD

Locations(TopSide)



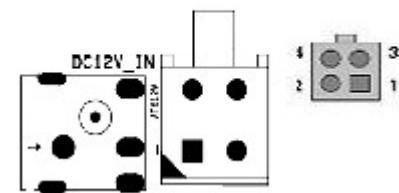
Connector and Jumper Setting

1)JBAT : CMOS Data retention/clear



STATUS	SETTING
Open	CMOS data retention. (Default).
Short	CMOS data Clear

2)ATX 12V_IN : External +12V DC Power input connector



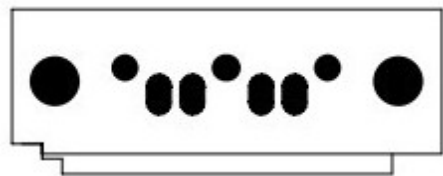
PIN	SETTING
1	GND
2	GND
3	+12V
4	+12V

3)USB3 ,USB4(P1-3-5-7) : Internal USB2.0 connector

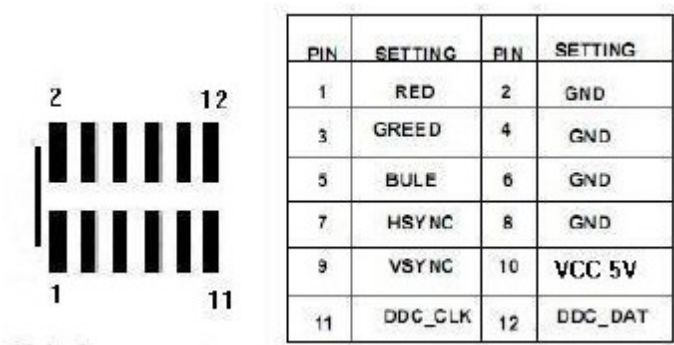


PIN	SETTING	PIN	SETTING
1	+5V	2	+5V
3	USB3-	4	USB4-
5	USB3+	6	USB4+
7	GND	8	GND
		10	GND

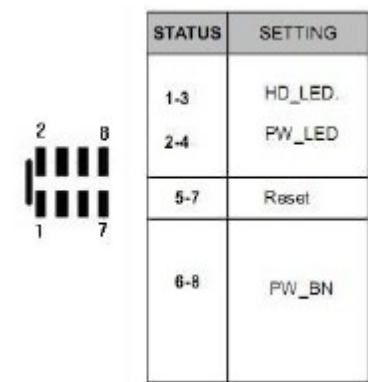
4)SATA1 : SATA device connector #1 #2 #3 #4



5) VGA1 : Extra VGA Signal connector



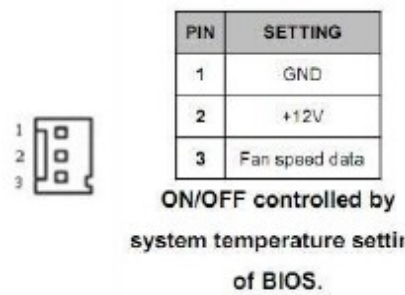
6)FP1 : Front panel connector




7)AUDIO 2 : 5.1channels Audio signal connector



8)CHAFAN CPUFAN : System DC fan connector

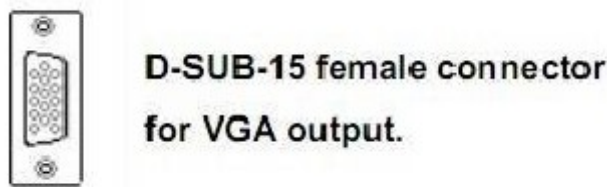


9)JP3 : POWER voltage selection(未使用)

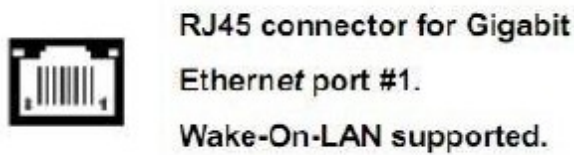


1-2	POWER ON
2-3	POWER OFF

10)VGA : D-SUB-15 female connector for VGA output



11)LAN1 : RJ45 connector for Ethernet port #1 #2



12)COM1-2 : COM connector

COM 插针 (5*2Pin 2.54mm)



针脚	定义	针脚	定义
1	-NDCD	2	SIN
3	SOUT	4	DTR
5	GND	6	DSR
7	RTS	8	CTS
9	RI	10	N/A

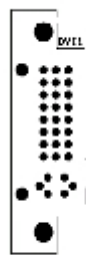
13)COM3-6 : COM3-6 connector

COM3-COM6 口 RS232 插针 (20*2Pin 2.0mm)

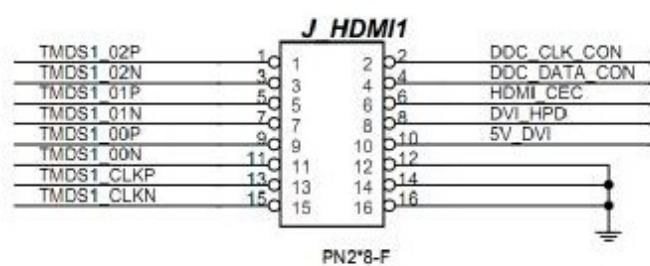


COM3		COM4		COM5		COM6	
针脚	定义	针脚	定义	针脚	定义	针脚	定义
1	-NDCD	11	-NDCD	21	NDED	31	-NDCD
2	SIN*	12	SIN	22	SIN	32	SIN
3	SOUT*	13	SOUT	23	SOUT	33	SOUT
4	DTR	14	DTR	24	DTR	34	DTR
5	GND	15	GND	25	GND	35	GND
6	DSR	16	DSR	26	DSR	36	DSR
7	RTS	17	RTS	27	RTS	37	RTS
8	CTS*	18	CTS	28	CTS	38	CTS
9	RI*	19	RI	29	RI	39	RI
10	GND	20	GND	30	GND	40	GND

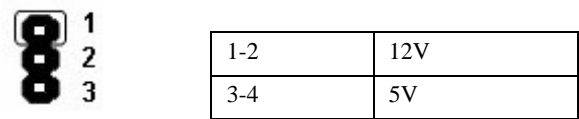
14)DVI1 : DVI connector



15)J_HDMI1 : connector



16)JP2 : INVERTER voltage selection



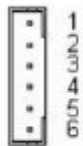
1-2	12V
3-4	5V

17)JP1 : LCD panel driving voltage selection



STATUS	SETTING
2-3	+3.3V for LCD panel. (Default).
1-2	+5V for LCD panel.

18)INVERTER1 : LCD panel inverter



PIN	SETTING
1	GND
2	GND
3	BKL_CTL
4	BKL_EN
5	12V
6	12V

19)LVDS1 : LCD panel (Onboard 24-bit single channel LVDS)connector



PIN	SETTING	PIN	SETTING
1	VCC	2	VCC
3	VCC-	4	GND
5	GND	6	GND
7	RX00-	8	RX00+
9	RX01-	10	RX01+
11	RX02-	12	RX02+
13	GND	14	GND
15	RX0C-	16	RX0C+
17	RX03-	18	RX03+
19	DDC_CLK	20	DDC_DATA
21		22	
23		24	
25	GND	26	GND
27		28	
29		30	

E: Even for dual channel.

O: Odd for single channel

BIOS SETTING

This chapter describes the BIOS menu displays and explains how to perform common tasks needed to get the system up and running. It also gives detailed explanation of the elements found in each of the BIOS menu displays. The following topics are covered:

Main

Advanced

Chipset

Boot

Security

Save & Exit

Once you enter the BIOS CMOS setup utility, you can use the control keys that listed at the bottom of the menu to select the desired value in each item.