



# Wellness Spa Owner's Manual

English version January 2009



At the end of the day.™

*Coast Spas*™

Please record the following information about your Wellness Series product and make sure you register your product at [www.coastspas.com](http://www.coastspas.com). Registering your Wellness product validates your warranty and protects your investment.

Wellness III

Serial number

## Notes

Street address

City

Province/State

Postal/Zip code

Phone

Dealer Email

Dealer Website

[illegible]

## CONTENTS:

Important safety instructions .....	page 2
Cautions.....	page 3
Setup and delivery guidelines	
<i>Locating your new Wellness Spa</i> .....	page 3
<i>Electrical requirements</i> .....	page 3
Start-up instructions .....	page 4
Filter maintenance .....	page 5
Draining and winterizing your spa .....	page 6
Controls and pumps.....	page 6
Water quality maintenance .....	page 9
Headrest/pillow care .....	page 9
Exercising and equipment .....	page 10
Control panels .....	page 11-12
Electrical diagram.....	page 13
Glossary of terms.....	page 14
Troubleshooting guide .....	page 15
Dimensions.....	page 18



## IMPORTANT SAFETY INSTRUCTIONS — READ AND FOLLOW CAREFULLY

1) **DANGER:** *Risk of Injury.* The suction fittings in this hot tub are sized to match the specific water flow created by the pump. Should the need arise to replace the suction fittings or the pump, be sure the flow rates are compatible. Never operate the hot tub if the suction fittings are broken or missing. Never replace a suction fitting with one rated lower than on the original fitting.

2) **ELECTRICAL SUPPLY:** The electrical supply for this product must include a suitably rated switch or circuit breaker to open all ungrounded supply conductors to comply with section 422-20 of the National Electrical Code, ANSI/NFPA 70. The disconnect must be readily accessible and visible to the hot tub occupant but installed at least 5 feet (1.5 m) from the hot tub water.

### 3) **WARNING: TO REDUCE THE RISK OF INJURY:**

- a) The water in a hot tub should never exceed 104 °F (40 °C). Water temperatures between 100 °F (38 °C) and 104 °F (40 °C) are considered safe for a healthy adult. Lower temperatures are recommended for young children and when hot tub use exceeds 10 minutes.
- b) Since excessive water temperatures have a high potential for causing fetal damage during the early months of pregnancy, pregnant or possibly pregnant women should limit hot tub water temperatures to 100 °F (38 °C). If pregnant, please consult your physician before using a hot tub.
- c) Before entering the hot tub, the user should measure the water temperature with an accurate thermometer since the tolerance of water temperature-regulating devices may vary as much as +/- 5 °F (2 °C).
- d) Persons suffering from obesity or a medical history of heart disease, low or high blood pressure, circulatory system problems or diabetes should consult a physician before using a hot tub.

### SAFETY INFORMATION

When using this electrical equipment, basic safety precautions should always be followed, including the following:

**WARNING:** Children should not use hot tubs without adult supervision.

**WARNING:** Do not use hot tubs unless all suction guards are installed to prevent body and hair entrapment.

**WARNING:** People with infectious diseases should not use

a hot tub.

**WARNING:** To avoid injury, exercise care when entering or exiting the hot tub.

**WARNING:** Do not use drugs or alcohol before or during the use of a hot tub to avoid unconsciousness and possible drowning.

**WARNING:** Pregnant or possibly pregnant women should consult a physician before using a hot tub.

**WARNING:** Water temperature in excess of 38 °C (100 °F) may be injurious to your health.

**WARNING:** Before entering the hot tub, measure the water temperature with an accurate thermometer.

**WARNING:** Do not use a hot tub immediately following strenuous exercise.

**WARNING:** Prolonged immersion in a hot tub may be injurious to your health.

**WARNING:** Do not permit electric appliances (such as lights, telephone, radio, television, etc.) within 5 feet (1.5 m) of this hot tub unless such appliances are built-in by the manufacturer.

**CAUTION:** Maintain water chemistry in accordance with manufacturer's instructions.

**WARNING:** The use of alcohol or drugs can greatly increase the risk of fatal hyperthermia in hot tubs.

**WARNING:** People using medication and/or having an adverse medical history should consult a physician before using a spa or hot tub.

## READ AND SAVE THESE INSTRUCTIONS

- a) A green colored terminal or a terminal marked G, Gr, Ground, Grounding or the symbol\* is located inside the supply terminal box or compartment. To reduce the risk of electric shock, this terminal must be connected to the grounding means provided in the electric supply service panel with a continuous copper wire equivalent in size to the circuit conductors that supply this equipment.
- b) At least two lugs marked "Bonding Lugs" are provided on the external surface or on the inside of the supply

terminal box/compartment. To reduce the risk of electric shock, connect the local common bonding grid in the area of the hot tub to these terminals with an insulated or bare copper conductor not smaller than No. 6 AWG.

- c) All field-installed metal components such as rails, ladders, drains or other similar hardware within 5 feet (1.5 m) of the hot tub shall be bonded to the equipment grounding buss with copper conductors not smaller than No. 6 AWG.

## Hyperthermia

Prolonged immersion in hot water may induce hyperthermia. Hyperthermia occurs when the internal temperature of the body reaches a level several degrees above the normal body temperature of 98.6 °F (37 °C). The symptoms of hyperthermia include drowsiness, lethargy, and an increase in the internal temperature of the body. The effects of hyperthermia include:

- a) Unawareness of impending hazard;
- b) Failure to perceive heat;
- c) Failure to recognize the need to exit hot tub;
- d) Physical inability to exit hot tub;
- e) Fetal damage in pregnant women; and
- f) Unconsciousness and danger of drowning.

## CAUTIONS

1. Observe a reasonable time limit when using the hot tub. Long exposures at higher temperatures can cause high body temperature. Symptoms may include dizziness, nausea, fainting, drowsiness, and reduced awareness. These effects could possibly result in drowning.
2. Always test the hot tub water temperature before entering the hot tub. Enter and exit the hot tub slowly. Wet surfaces can be very slippery.
3. Proper chemical maintenance of hot tub water is necessary to maintain safe water and prevent possible damage to hot tub components.
4. Use the straps and clip tie downs to secure the cover when not in use. This will help to discourage unsupervised children from entering the hot tub and keep the hot tub cover secure in high-wind conditions. There is no representation that the cover, clip tie-downs, or actual locks will prevent access to the hot tub.
5. For exercise, the water should not exceed 90 °F (32 °C).

## SET-UP AND DELIVERY GUIDELINES

*Getting ready for delivery and setup of your new Wellness spa*

**LOCATION OF YOUR NEW SPA:** Some points to consider

- How close is the spa from the exit or entrance to your house? (Consider the cold weather)
- Is the path to the spa clean of debris, sand, grass clippings? (So as not to track into spa)
- Is there any protection from wind, inclement weather?
- Can neighbors or passersby see the spa?
- If your spa is to be placed near where sprinklers may hit the wood skirt, shell or equipment, please adjust or cap them to prevent prolonged water exposure.

## Electrical Requirements

**ALL INSTALLATIONS SHOULD BE DONE BY A CERTIFIED ELECTRICIAN**

### INTERNATIONAL 50 HZ INSTALLATION

The electrical installation of a **Wellness II** swim spa requires two separate incoming power lines. The primary control pack is recommended to be connected to *3 Phase 3 x 16 Amp with a neutral connection*. If this is unavailable in your area, it is recommended to be a *1 x 32 Amp connection*. The secondary control pack requires a *1 x 16 Amp connection*. Please see the inside control pack covers for specific control pack wiring directions. All electrical installations must be completed by a Licensed Electrician and according to local electrical codes.

When electrically installing a **Wellness II** and **Wellness III** together, the control pack in the Wellness II is recommended to be connected to *3 Phase 3 x 16 Amp with a neutral connection*. If this is unavailable in your area, it is recommended to be a *1 x 32 Amp connection*. The control pack in the Wellness III requires a *1 x 32 Amp connection*. Please see the inside control pack covers for specific control pack wiring directions. All electrical installations must be completed by a Licensed Electrician and according to local electrical codes.

### NORTH AMERICAN 60 HZ INSTALLATION

The electrical installation of a **Wellness II** swim spa requires two separate incoming power lines. The primary control pack requires a *50 Amp GFCI connection*.

The secondary control pack requires a *20 Amp GFCI connection*. Please see the inside control pack covers for specific control pack wiring directions. All electrical installations must be completed by a Licensed Electrician and according to local electrical codes.

When electrically installing a **Wellness II** and **Wellness III** together, the control pack in the Wellness II requires a *50 Amp GFCI connection*. The control pack in the Wellness III requires *50 Amp GFCI connection*. Please see the inside control pack covers for specific control pack wiring directions. All electrical installations must be completed by a Licensed Electrician and according to local electrical codes.

*\* See Diagram 02 on Page 13*

### JOINING YOUR WELLNESS II & III SWIM AND THERAPY SPAS TOGETHER

- If you've purchased a Wellness III therapy spa to accompany your Wellness II swim spa, you'll need to make sure you have a sufficiently large, flat level surface (see diagram for correct dimensions).
- When you have verified that your area is large enough, position your Wellness II in its final location.
- Remove the front panel and right hand side panel from the Wellness II.
- Lift the right hand corner of the Wellness II (see diagram) approximately 1 inch for sufficient clearance.
- Once lifted, position the Wellness III under the lip of the Wellness II.
- On the Wellness III is a step-down lip. Place it under the lip of the Wellness II.
- Now slowly lower the Wellness II, ensuring the two spas align correctly. Some adjustment may be needed as you lower.
- When in the seated position, the radius on the Wellness II should match up with the Wellness III.
- While the panels are off, now is a good time to connect the pump 4 wire of the Wellness II to the pack of the Wellness III in the pump 2 location.
- Reinstall the panels that you previously removed.

### SURFACE AND PAD REQUIREMENTS:

- Your new swim spa must be placed on a firm, flat and level surface, so the spa weight is supported uniformly. We recommend no less than a 3-1/2 in. (93 mm) thick concrete slab. Alternate decking methods may void warranty of spa shell.
- Please contact your Coast Spas dealer if you have any

questions regarding location or placement of your new spa.

## START-UP INSTRUCTIONS

### FILLING YOUR WELLNESS II AND III SPA

**NOTE:** Coast Spas recommends you do not fill your spa with hot water. Excessively hot water (over 107 °F) may cause damage to components in the spa pack.

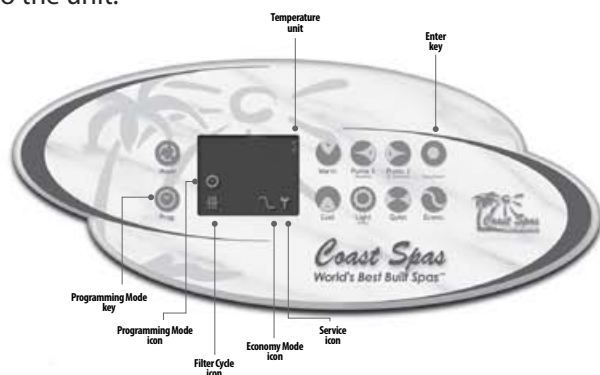
**ALSO:** Do not fill your spa with water from a water softener. If your water is extremely hard, your Coast Spas dealer can help you to remedy this problem.

- Your new spa has left the factory cleaned and polished. You may have to clean out any dirt that has accumulated during shipping. Use warm water and sponge or cloth.
- Be sure all fittings are connected, secure and hand tightened in the equipment enclosure. Your Coast Spa is shipped with some fittings disconnected to ensure no damage or freezing occurs during the spa's route from our factory to your home.
- Before filling, remove filter from filter housing and remove its plastic bag. Replace filter in housing. Also replace filter cap and lock ring.
- Before filling your Wellness II and III, please ensure the filter lid air bleed screw and the air bleed screw located on the inside wall of the Wellness II next to the skimmer are loose to allow air to escape while filling. Please remember to close these air bleed screws before startup.
- Your Wellness II has four pumps located around the base of the spa. Three are located at the 'swim jet' end of the spa and one is located in the equipment area directly below exercise seat.
- The Wellness III has only one pump, located on the side adjoining the Wellness II.
- There is no need to access air bleed screws for Pump 2, 3 or 4 of your Wellness II because they are designed to self-bleed. You may need to switch pumps on and off a couple of times to force any air from the lines.
- Fill your Wellness Spa with your garden hose. Place the hose inside the spa or in the filter canister and secure the hose in place. Filling through the filter helps eliminate most of the trapped air in the pumps and heater. Loosen the bleeder valve in the skimmer while filling. Check that pump unions are tight and knife valves are in a fully open position. Filling the Wellness II swim spa will take longer than filling a hot

tub because it holds 1667 US gallons or 6312 litres of water. The fill line is halfway up the skimmer area. Optimum water depth is when the water level just reaches the top of the weir door (behind the grate) when the door is vertical.

## CONTROL PANEL

Please read the specific CONTROL PANELS Card (see pages 11 and 12) pertaining to the spa side control and control box that has been supplied with your unit. This must be done before starting up your spa to prevent any damage to the unit.



## WELLNESS II START-UP INSTRUCTIONS

- Ensure the filter canister lock ring, air bleed screw and pump air bleed screw (located on the inside wall of the spa next to the skimmer) are secured and finger tightened before start-up.
- Once your breaker is activated and you have power at the controls, turn on the pumps one at a time by pushing the pump buttons on the control panel. If circulation is not visible, turn the pumps off and then on again until you reach full water flow and visible circulation.
- It may be necessary to open the bleed screw by the skimmer again to bleed out any excess air that may not have been relieved during initial fill. Make sure when this bleed screw is open that your pumps are not running. The best way to achieve this is by turning the main power off.
- After bleeding the air again, turn power back on and repeat step two by turning on the pumps one at a time to ensure water is flowing properly.
- Only work on one pump at a time. When it is running properly and the water is flowing consistently, turn it off and move to the next pump.
- When all four pumps are running properly, now would be a good time to program settings such as heat and filtration. Please refer to the section on controls elsewhere in this manual.

## FILTER MAINTENANCE

Filtration starts as soon as flow is steady through the filter. As the filter cartridge removes the dirt from the spa water, the accumulated dirt causes flow resistance.

### CLEANING AND REPLACING FILTER CARTRIDGE

Your spa filter has been designed for quick and easy maintenance. The filter cartridge should be rinsed by hose once a week and cleaned with a cartridge cleaner once a month. A second filter cartridge is recommended and will speed up the process. This can be purchased from your Coast Spas dealer.

### TOP LOAD FILTERS

- Turn power **OFF** at the breaker.
- Remove Filter access lid. Loosen air relief valve before removing retaining ring.
- Pull dome lid straight **up** to remove.
- **DO NOT TWIST OR PULL DOME LID UP AT AN ANGLE. THIS COULD CAUSE DAMAGE TO THE FILTER CANISTER, ESPECIALLY IN FREEZING WEATHER. DO NOT REMOVE DOME LID IN ICY CONDITIONS!**

- Remove filter cartridge and clean with a garden hose and a high-pressure nozzle. Periodically you may need to soak your filter in a "cartridge filter cleaner" to remove excess minerals and/or oils. You can purchase this cleaner at your Coast Spas dealer.

- Rinse filter thoroughly before installing. Clean o-ring on dome lid and apply a light film of silicone lubricant. Do not use a petroleum-based lubricant as it could damage the o-ring. Consult your Coast Spas dealer.

- Place clean cartridge in filter canister.
- Replace dome lid and re-tighten retaining ring (finger tight only).
- *Note: make sure the o-ring is on the air relief valve, and is finger tight when ready to start pump. This o-ring should periodically be lubricated with a silicone lubricant.*
- This is a good time to check the skimmer basket. Pull skimmer grate forward. Unscrew basket. Clean out debris and reinstall.





## DRAINING YOUR WELLNESS SPAS

Every three to four months, your water may tend to get cloudy from detergent residues in bathing suits. In this case you may find it necessary to replace your spa water as follows:

- Remove the door from the front of the spa. You will find a garden hose bib (connection) — grey with a black cap.
- Remove the black cap and attach your garden hose. Place the open end of the hose in an area where water can freely drain away.
- To start the draining process, turn the black valve on top of the grey hose bib.

Note that it may take several hours for the Wellness II to drain, owing to its large volume of water.

## REFILLING YOUR COAST SPA

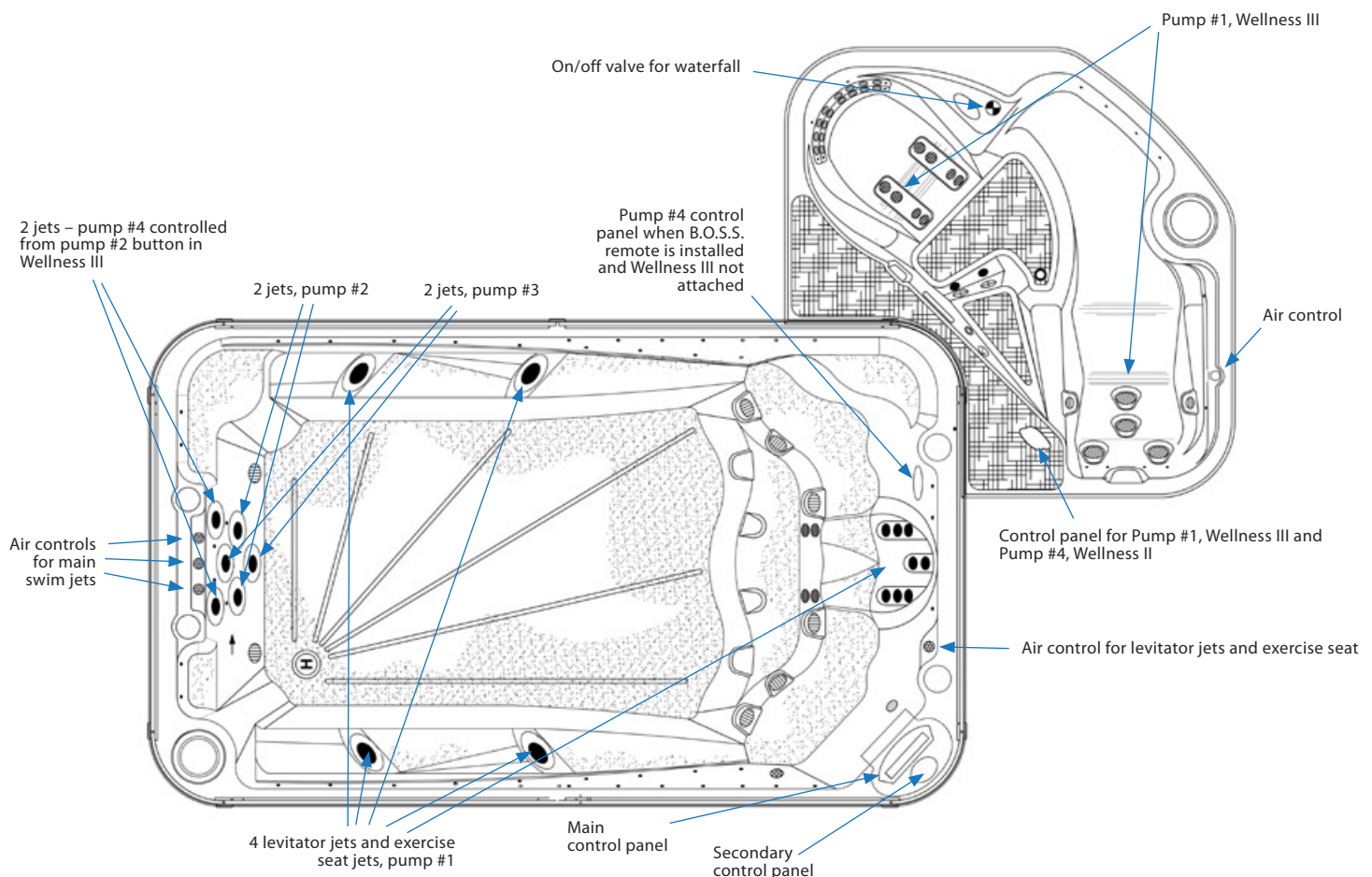
- Please follow the instructions on page 4, filling your spa.
- Follow start-up instructions.

## WINTERIZING

If it is necessary to leave your spa unattended for long periods of time during cold weather conditions, you should drain your spa to avoid accidental freezing caused by power outages. Your Coast Spas dealer can perform the following winterizing procedures, if you are not completely comfortable with them.

- Refer to the DRAINING YOUR COAST SPA section.
- After draining, your Coast Spa may still have water remaining in the equipment and plumbing fittings. Disconnect the hand-tightened union fittings going to and from the jet pumps. Be careful not to lose the o-rings between the unions and pump housing.
- Leave drain valve in the open position and safety cap off.
- To completely drain the plumbing lines, a wet/dry shop vac can be used to draw out any remaining water. Place the vac hose over the jet fittings in the spa as well as the plumbing lines in the equipment area.

## Wellness II and III controls and pumps





- Remove the filter cartridge and store in a warm, dry area.
- Clean the spa shell and place spa cover on spa. Be sure to lock the cover in place in case of high winds or rain.

**EMERGENCY SITUATIONS:** To eliminate freezing in the event of equipment failure, use a 100-watt light bulb or small heater via extension cord and place it in the equipment area, keeping it away from plumbing lines. This will help for a short period of time until proper service can be rendered.

## CONTROL PANELS

### WELLNESS II & III CONTROL PANEL LOCATIONS

- The main spa control panel instructions for the Wellness II spa are located on page 16 of the Coast Spas owner manual. Pumps # 1, 2 & 3 are operated through this control. Pump # 4 is operated by the secondary control panel located directly above the main control panel.
- If you have installed the Wellness III along with the Wellness II spa, the 4th pump for the Wellness II swim spa jets is operated by the "Pump 2" button on the Wellness III control panel located in the Wellness III spa. Operating instructions for this panel are on page 15 of your Coast Spas owner manual.
- If you have purchased the optional B.O.S.S. Floating Remote Control, pumps # 1, 2 & 3 are operated by this BOSS control and pump #4 is operated by the secondary control panel located on the inside tub wall next to the exercise seat (unless you have purchased

the Wellness III).

- Please refer to the illustration for panel locations.

## B.O.S.S. HANDHELD REMOTE CONTROL

The B.O.S.S. (Buoyant Operating Spa System) is the industry's best remote control — waterproof and designed to provide hours of trouble-free usage. For best results, please remove the control from the water when the spa is not in use. Prolonged exposure to the hot water in your spa may create humidity built-up inside your control. This will not affect the operation of the remote but it may alter its appearance.

Please read the instructions provided in this manual carefully to ensure optimal use of your B.O.S.S. remote control.

### THE B.O.S.S. HANDHELD REMOTE CAN CONTROL THE FOLLOWING DEVICES:

- Spa
- Audio equipment (CD, Tuner)
- Video equipment (TV, VCR and DVD)

### B.O.S.S. HANDHELD REMOTE FEATURES

- Multifunction device keys
- Spa status monitoring from inside your home
- Data reception up to 150 feet (distance may vary depending on obstacles such as walls, etc. Should this happen, try a different and more favorable location)
- Ergonomic design
- Floatable

## The B.O.S.S. handheld remote control

### REMOTE KEYS

#### Multifunction keys

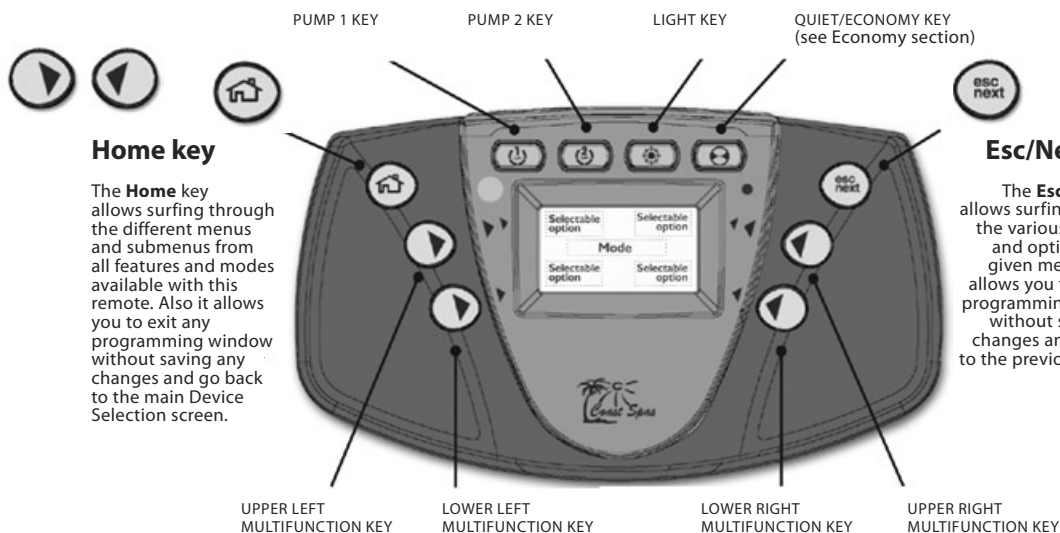
Each of these four keys helps you to select and/or execute the indicated function (pointed by the arrows) displayed on the screen in any given window. In this way, the task performed by a given multifunction key will vary depending on the menu or window.

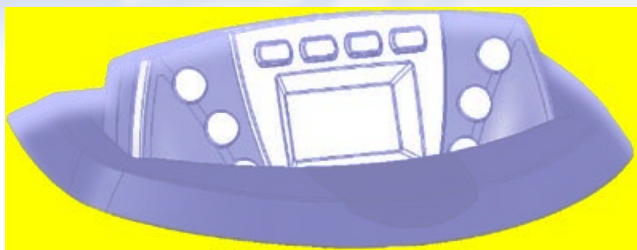
#### Home key

The **Home** key allows surfing through the different menus and submenus from all features and modes available with this remote. Also it allows you to exit any programming window without saving any changes and go back to the main Device Selection screen.

#### Esc/Next key

The **Esc/Next** key allows surfing through the various windows and options of any given menu. Also it allows you to exit any programming window without saving any changes and go back to the previous screen.





- Totally sealed
- Speed keys for quick and easy access to main spa functions.

The B.O.S.S. base unit has been conveniently designed to act as receiver-transmitter device as well as a battery charging unit for the B.O.S.S. handheld remote control. The first-time charge should be for 24 hours.

### B.O.S.S. BASE UNIT FEATURES

- Built-in RF receiver and RF transmitter.
- Automatic recharge of the Ni-MH batteries used by the handheld remote.
- It's waterproof.
- For programming instructions, please see B.O.S.S. instruction manual provided with your spa.

### PROGRAMMING YOUR FLOATING REMOTE CONTROL

Before you start, it is important to note that a more than 10-sec delay between key presses automatically cancels Programming Mode. Use the codes required for your devices listed below.

### SONY® RADIO/CD PLAYER

To start using Sony Radio/CD player, press **RADIO CD** button.

**ON/OFF** button activates the Sony® Radio/CD player. When the power is on, this button allows you to switch between sources Radio AM/FM TUNER and AUX. The Monitor is connected to auxiliary in order to get the sound from DVD or Cable/TV.

**Volume UP** button increases volume of the Sony® Radio/CD player.

**Volume Down** button decreases volume of the Sony® Radio/CD player.

**Channel Up** seeks the next radio station or skips to next CD track.

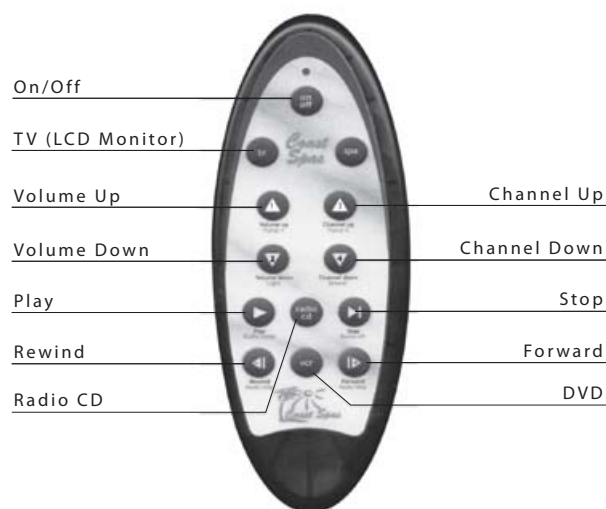
**Channel Down** seeks the previous radio station or skips

to previous CD track.

**Play** button switches between AM/FM modes.

**Stop** button turns off the Sony® Radio/CD player.

Note this universal floating remote can also operate your home entertainment equipment. Refer to remote manual for programming instructions. Separate manual comes with remote.



1 • Press the key relating to the device you want to program with your remote control (Spa, TV, VCR/DVD, Radio/CD).



2 • Next, press and hold **Rewind** key. The LED indicator will flash.



3 • While holding **Rewind** key, press and hold **On/Off** key for two seconds until LED indicator lights up. Then, release both keys.



4 • Enter the 5-digit code for the device you want to program.



5 • The LED indicator will turn off if code is correct and program setting successful. If not, LED indicator will flash twice. If this happens, verify code and repeat programming process if necessary.

6 • The remote control will exit Programming Mode if any key other than numerical ones (1-2-3-4) are pressed during programming procedure.

7 • Repeat process for each device you want to program for your remote control.

**N.B.**  
The code for your spa is #24332.

The code for your Sony CDX-C6750 Radio/CD is #24311.

The code for your Monitor is #11234

The code for your DVD is #24131

## STEREO/CD OPTION

The stereo can be controlled by the stereo's remote, floating remote control or B.O.S.S. (which is an option), or topside control panel. The floating remote and B.O.S.S. also control the functions of the spa.

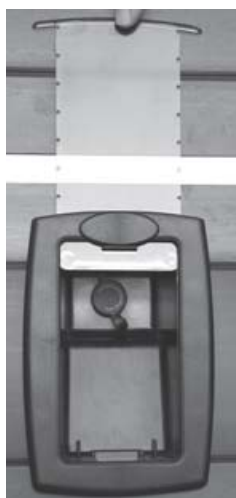
If your Spa is equipped with manually activated popup speakers, simply push down on the speaker housing surface for each speaker to rise into place. For smooth operation, use gentle hand pressure to slow speaker's rise until it is fully extended. To lower, push speaker housing surface down until it locks in place.

## SONY® STEREO (EXTREME SOUND™) OPTION

If your spa is equipped with the SUB Amp combo, the Amplifier will turn on after you activate the stereo (whether by remote control or manually).

## MP3/IPOD-COMPATIBLE SOUND OPTION

Your spa may include the MP3-compatible sound option, which allows you to connect your personal music device to your Coast spa. This option is available on certain series as a standalone MP3 connection. You may also have the MP3 connection as an additional option to your Sony AM/FM CD stereo system. On this option, volume may be controlled through your Sony stereo controls and/or remote control.



MP3 PLUG-IN WINDOW  
(WITH SLIDING DOOR)

## WATER QUALITY MAINTENANCE

Maintaining the quality of the water within specified limits will serve to enhance your enjoyment and prolong the life of the hot tub's equipment. It is a fairly simple task, but it requires regular attention because the water chemistry involved is a balance of several factors. There is no simple formula, and there is no avoiding it. A careless attitude in regard to water maintenance will result in poor and potentially harmful conditions for soaking and even damage to your hot tub investment. For specific guidance on maintaining water quality, consult your Authorized Coast Spas Dealer who can recommend appropriate chemical products for sanitizing and maintaining your hot tub.

**CAUTION:** Never store hot tub chemicals inside the hot tub's equipment enclosure.

## PH CONTROL

pH is a measure of relative acidity or alkalinity of water and is measured on a scale of 0 to 14. The midpoint of 7 is said to be neutral, above which is alkaline and below which is acidic. In hot tub water, IT IS VERY IMPORTANT TO MAINTAIN A SLIGHTLY ALKALINE CONDITION OF 7.2 to 7.8. Problems become proportionately severe the further outside of this range the water gets. A low pH will be corrosive to metals in the hot tub equipment. A high pH will cause minerals to deposit on the interior surface (scaling). In addition, the ability of the sanitation agents to keep the hot tub clean is severely affected as the pH moves beyond the ideal range. That is why almost all hot tub water test kits contain a measure for pH as well as sanitizer.

## SANITIZING

To destroy bacteria and organic compounds in the hot tub water, a sanitizer must be used regularly, either chlorine or bromine. Bromine residual of 2 to 3 ppm is generally considered desirable. A two-part bromine system or granular chlorine (Dichlor) can also be acceptable sanitizers. Chlorine residual should be 1 to 3 ppm.

**IMPORTANT:** Do not use *Hydrogen Peroxide* based sanitizers in your spa. When using *Trichlor chlorine* or *Bromine* tablets you must use a floating dispenser. These chemicals can have an extremely corrosive effect on certain materials in the spa. Damage caused by use of these chemicals, or improper use of any chemicals, is not covered under the spa's warranty.

## OTHER ADDITIVES

Many other additives are available for your spa. Some are necessary to compensate for out-of-balance water, some aid in cosmetic water treatment and others simply alter the feel or smell of the water. Your Authorized Coast Spas Dealer can advise you on the use of these additives.

## HEADREST/PILLOW CARE

1. Do not sit on pillows.
2. Do not pull on pillows.
3. Proper water chemistry must be maintained. Excessive levels of chlorine, bromine or ozone may damage your pillows.
4. Pillows should be washed when you drain your spa with a mild soap and then wiped with conditioner.
5. When you shock your spa, prop up your cover for a minimum of thirty minutes so excess gases may escape out of spa.

*Please be advised that pillows are not a warranty item.*



## Wellness I and II (Swim Spa) exercises



Rowing and arm curls are built into the Wellness Spa and can be attached and performed easily. Exercise bands (included) come in several resistance levels for persons of all ages and strength levels.

### 1. Swimming

With swim jets on, swim directly into current so as to remain stationary. Adjust water temperature to a comfortable level — 80-85 °F (27-29 °C). Avoid making it too hot, which could cause hyperthermia.

### 2. Curls (Wellness Spa I and Swim Spa)

Connect bands to spa bottom (Wellness Spa I) or wall (Swim Spa) as shown. Slowly curl arms upwards as far as is comfortable, then slowly release. *Muscle group: biceps.*

### 3. Rowing (Wellness Spa I and Swim Spa)

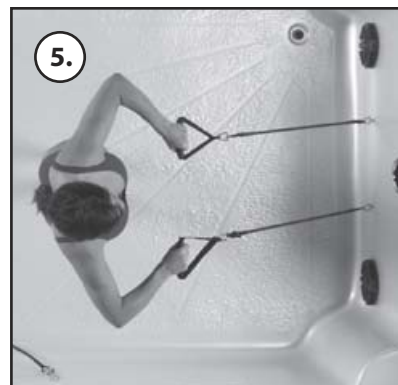
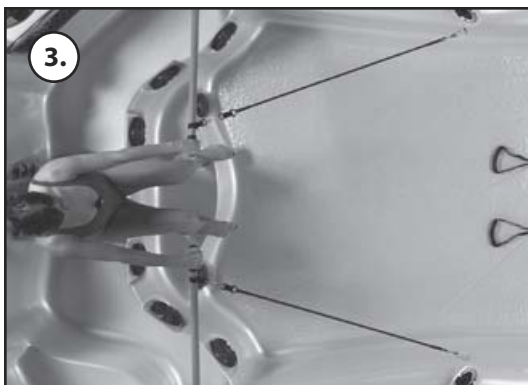
Clip bands to oars and oars to spa wall. Sit (Wellness Spa) or stand (Swim Spa) with body firmly braced. Pull oars as far towards body as is comfortable, then slowly release. *Muscle groups: deltoid, trapezius, latissimus dorsi, pectoralis.*

### 4. Shoulder presses (Swim spa)

With feet firmly braced against junction of floor and wall, alternately extend and retract handles upward at 45 degrees. *Muscle groups: deltoid, trapezius, biceps.*

### 5. Overhand rowing (Wellness Spa I and Swim Spa)

With feet firmly positioned and hands facing downward, alternately extend and retract handles upward at 45 degrees. *Muscle groups: deltoid, trapezius, biceps, pectoralis.*





The **Quick Reference Card** provides a quick overview of your spa's main functions and the operations accessible with your digital control pad.

## Starting Pump 1:



Press **Pump 1** key to turn Pump 1 on at low speed. Press a second time to turn Pump 1 to high speed. A third time turns Pump 1 off. A built-in timer automatically turns Pump 1 off after 20 minutes, unless it has been manually deactivated.

The "Pump 1" indicator lights up when Pump 1 is on.

## Starting Pump 2:



Press **Pump 2** key to turn Pump 2 on. Press a second time to turn Pump 2 off. A built-in timer automatically turns Pump 2 off after 20 minutes, unless it has been manually deactivated.

The "Pump 2" indicator lights up when Pump 2 is on.

## Turning the light on:



Press **Spa Light** key to turn light on. Press a second time to turn light off. A built-in timer automatically turns light off after 2 hours, unless it has been manually deactivated.

The "Light" indicator is displayed when light is on.

## Setting water temperature:



Press and hold **Warm/Cool** key once to increase temperature. To decrease, press and hold **Warm/Cool** key again. The temperature setting will be displayed for 5 seconds to confirm your new selection.

The "Set Point" indicator displays the desired temperature, NOT the current water temperature!

Water temperature can be adjusted by 1° increments from 59 to 104°F (15 to 40°C).

## Automatic water heater start:

When water temperature is 1°F (0.5°C) lower than the Set Point, the heater will automatically turn on until water temperature reaches the Set Point plus 1°F (0.5°C).

The "Heater" indicator lights up when the heater is on.

*Note: If your system is configured in Low Current Mode, the heater will not start if a pump is running at high speed.*

## Programming the filter cycle duration:

The system automatically performs two filter cycles per day, at 12-hour intervals. During a filter cycle, Pump 2 runs for one minute, then Pump 1 runs for the programmed number of hours and the ozonator is activated.

To set the filter cycle duration:



Press and hold **Spa Light** key for 5 seconds. The display will show the currently set filter cycle duration in hours.



Use **Warm/Cool** key to change setting.

0 = no filtration  
12 = continuous filtration



When the desired setting is displayed, press **Spa Light** key to confirm. A filter cycle will start.

The "Filter Cycle" indicator lights up when the filter cycle is on.

*An irregularly flashing "Filter Cycle" indicator means that the system has stopped filtering after 3 hours because water temperature exceeds the Set Point by more than 2°F (1°C). If the temperature cools down to 1°F (0.5°C) above Set Point before the scheduled end of the cycle, filtering will resume for the remainder of the programmed duration.*

*After a power failure, the filter cycle duration will return to its default value (6 hours). In this case, the first filter cycle will start 12 hours after power has been restored.*

## Troubleshooting:



The "Heater" indicator is flashing when pumps are running at high speed.

Not a bug but a feature!

The heater is automatically turned off when pumps are running at high speed to limit the electrical current draw.



Pumps have started up for one minute on several occasions and "Filter Cycle" indicator is flashing.

Not a bug but a feature!

Our **Smart Winter Mode** protects your spa from the cold by automatically turning pumps on for one minute several times a day to prevent water from freezing in pipes.



Water temperature is flashing.

Water temperature in the spa has reached 112°F (44°C).

Do not enter the water! Allow the water to cool down. The system will reset automatically when water reaches 109°F (43°C).

Call your dealer or service supplier if problem persists.



3 flashing dots are displayed.

A problem has been detected.

Do not enter the water! Check and open water valves. Clean filter if necessary. Check water level. Add water if needed.

Shut power off and power your spa up again to reset the system.

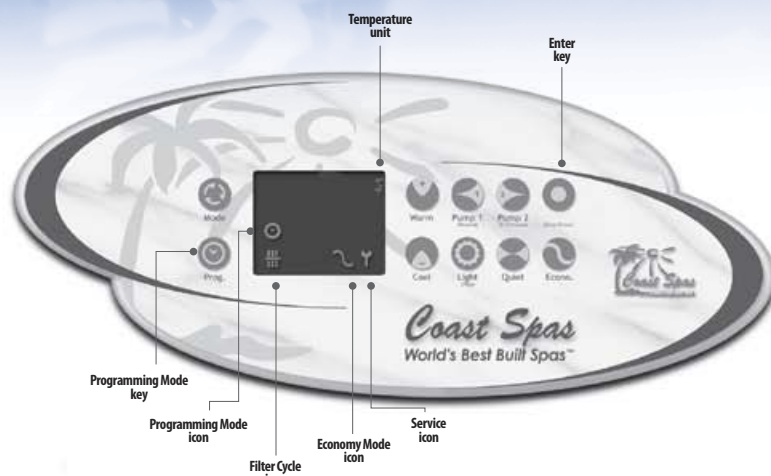
Call your dealer or service supplier if problem persists.



The display is flashing.

A power failure has occurred. Press any key to reset the system, then reprogram all desired parameters.

# Control panels – Coast Spas 3-pump Luxury & Platinum Series, North American models



## Service message

Every 8,000 hours of use, the spa will display a "SER" message that will indicate that it is time for your spa check-up.

## Time of day

### Setting the time:

- 1- Enter Programming mode by holding **Prog.** key pressed down for 2 seconds. The "CL" message is displayed.
- 2- Press **Enter** key to display the current setting.
- 3- Use **Warm** or **Cool** arrow key to change setting.

## Filter cycle start time & duration

The system automatically performs two filter cycles per day, at 12-hour intervals. During a filter cycle, Pump 2 and blower run for one minute then Pump 1 (or circulation pump if installed) runs at low speed for the programmed number of hours. "Filter Cycle" icon is on during a filter cycle.

To program a filter cycle, you must enter two parameters: the start time of the cycle and its duration. If no filtering is required, the duration must be set to "OFF". If continuous filtering is required, the duration must then be set to "12:00".

### Setting filter cycle start time:

- 1- Press **Prog.** key a second time.
- 2- The display will show "Flon", with "xx" representing the starting hour.
- 3- Press **Enter** key to display the current setting.
- 4- Use **Warm** or **Cool** arrow key to change setting.

### Setting filter cycle duration:

- 1- Press **Prog.** key a third time.
- 2- The display will show "Fidu", with "xx" representing the duration in hours.
- 3- Press **Enter** key to display the current setting.
- 4- Use **Warm** or **Cool** arrow key to change setting.

## Economy mode start time & duration

The Economy mode allows you to lower the temperature Set Point of the spa by 20°F (11°C) during a certain period of the day. When in Economy mode, the "Economy Mode" icon is displayed.

To program the Economy mode, you must enter two parameters: the start time and the duration. If the Economy mode is not required, the duration must be set to "OFF".

You can manually override the current Economy status (on or off) for the rest of the day by pressing **Econo.** key.

### Setting Economy mode start time:

- 1- Press **Prog.** key a fourth time.
- 2- The display will show "ECon", with "xx" representing the starting hour.
- 3- Press **Enter** key to display the current setting.
- 4- Use **Warm** or **Cool** arrow key to change setting.

### Setting Economy mode duration:

- 1- Press **Prog.** key a fifth time.
- 2- The display will show "ECdu", with "xx" representing the duration in hours.
- 3- Press **Enter** key to display the current setting.
- 4- Use **Warm** or **Cool** arrow key to change setting.

## Temperature unit

Water temperature can be displayed in °F or °C.

### Selecting the temperature display unit:

- 1- Press **Prog.** key a sixth time.
- 2- The display will show "Tu", with "x" for either °F or °C.
- 3- Press **Enter** key to display the current setting.
- 4- Use **Warm** or **Cool** arrow key to change setting.

## Summary of control panel parameters



CL  
Flon  
Fidu  
ECon  
ECdu  
Tu  
Loc

Time of day  
Filter cycle start time  
Filter cycle duration  
Economy mode start time  
Economy mode duration  
Temperature unit (°F or °C)  
Keypad lockout

## Keypad lockout

This function allows you to prevent unauthorized parameter setting of the unit. The basic functions of the spa will remain accessible (pump and light outputs) but it will be impossible to change the temperature Set Point, to override the Economy mode or to enter the Programming mode.

When the keypad is locked, the "Lock" icon will be displayed.

### Locking the keypad:

- 1- Press **Prog.** key a seventh time.
- 2- The display will show "Loc" or "Uloc".
- 3- Press **Enter** key to display the current setting.
- 4- Use **Warm** or **Cool** arrow key to change setting.

To unlock the keypad, press and hold **Pump 1** key for 5 seconds.

## Inverting the display

A simple key press sequence inverts the display to make it readable from inside or outside the spa. To invert the display:

- 1- Press and hold **Prog.** key for 2 seconds. The "CL" message will be displayed.
- 2- Press **Light** key. The "CL" message will disappear and the display will be inverted. The "°F" or "°C" icon will not be displayed.

## Changing modes

The system can be configured in 3 different modes: SPA, VCR and CD. Simply press **Mode** key to change modes. The appropriate icon will light up to indicate which mode you are in. If keypad remains untouched for more than 5 minutes, the system will automatically revert to SPA mode.

In SPA mode: In CD/DVD mode:

**Pump 1** key.....**Rewind** key  
**Pump 2** key.....**Forward** key  
**Light** key.....**Play** key  
**Stop/Enter** key.....**Stop** key

In SPA mode: In Radio mode:

**Pump 1** key.....**Seek -** key  
**Pump 2** key.....**Seek +** key  
**Light** key.....**Mode** key (FM1, FM2 & AM)  
**Stop/Enter** key.....**Sources** key (On or toggles between CD and Radio mode)



## Electrical Wiring – Diagram 02 (North American customers only)

Correct wiring of the electrical service box, GFCI box and pack terminal block is essential. All installations should be carried out by a certified electrician.

**INTERNATIONAL CUSTOMERS** should see their local authorized Coast Spas Dealer for electrical wiring requirements.



## Glossary of terms

**AIR CONTROL:** Mounted generally on the lip of the spa, it induces warm air from the equipment enclosure into the jet stream through venturi action.

**AIR RELIEF VALVE:** Located on top of dome filter lid. Used to release air on a pressure filter.

**BLEEDER VALVE:** Located on the wet end of pump #1 and pump #2. Used for releasing air from the pumping system.

**COAST ZONE OZONATOR:** Available as an option. The ozonator produces natural ozone through Corona Discharge. Continuous use of an ozonator can dramatically reduce sanitizer consumption.

**CHECK VALVE:** To prevent water back flow into ozonator.

**CONTROL BOX:** Basically the “heart” of the spa. Power is distributed to any/all functions of the spa: pumps, ozonators, LED lighting, heater element, etc.

**CONTROL PANEL:** Mounted on the top lip of the spa and controls the functions of the spa.

**DRAIN VALVE:** Used in draining of the spa. Normally located in the lower left hand corner of the spa skirt.

**EQUIPMENT ENCLOSURE:** An enclosure that houses the control box, pump(s) and other electrical components.

**FILTER:** The filter cleans the spa by passing water through a filter cartridge where debris and impurities are removed. Top load filter means the filter cartridge is accessible through the top of the spa. Front access skimmer means cartridge is accessed through door of skimmer.

**FLOATING REMOTE:** A remote control that controls spa functions as well as the DVD player and the Sony radio/CD. The unique design allows it to float on the water surface.

**FLOOR DRAIN:** The floor drain is covered by a grate-type cover and is utilized when draining the spa. It also acts as the return for the ozonator. Bubbles emitted from this drain are the result of water mixing with the ozone.

**GATE VALVES:** Red with a grey handle is located at the inlet and outlet of the pumping system. Used while servicing the spa equipment, the valves open or close the water flow to the equipment. To remain open for normal use, turn fully counterclockwise.

**HEATER:** The thermostatically controlled heater raises the temperature of the spa to the desired setting.

### JETS:

**LAMINAR FLOW JET:** A thin stream of water that arcs from the spa lip. May be backlit by Fiber Optic or LED.

**MASTER MASSAGE JET:** A large-aperture jet with multiple nozzles to massage many muscle groups simultaneously.

**NECK JET:** Direction-controllable jet for soothing neck massage.

**TRILLIUM ADJUSTABLE CLUSTER JET:** Our adjustable, high-intensity hydrotherapy jet.

**TRILLIUM ORBITAL JET:** Provides a unidirectional circular therapeutic massage.

**TRILLIUM GATLIN POLY JET:** Delivers massage in staccato bursts over a wide area, like a professional masseuse.

**TRILLIUM POLY ORBITAL JET:** Provides a unidirectional circular therapeutic massage.

**TRILLIUM POLY DIRECTIONAL JET:** Provides a straight flow for a therapeutic massage.

**TRILLIUM DIRECTIONAL JET:** Provides a straight flow for a therapeutic massage.

**TRILLIUM FIBER OPTIC JET:** Exclusive to Coast, it adds a splash of color to hydrotherapy sessions.

**TRILLIUM VOLCANO/WHIRLPOOL JET:** high-output jet on spa floor designed for foot and leg massage.

**TRILLIUM GATLIN JET:** Delivers massage in staccato bursts over a narrow, focused area.

**TRILLIUM PULSATING JET:** Provides a unidirectional circular therapeutic massage.

**KNIFE VALVES:** A white “T”-handled valve, same functions as Gate valve (see above), except to open pull up on handle.

**LEDs:** LEDs and their special lenses can be used to achieve the desired mood lighting in the spa and spa jets.

**SKIMMER:** This is the rectangular outlet at the water level. The skimmer removes surface debris to the filter. The water level in the spa should be kept at the center of the skimmer for optimum operation.

**SUCTION FITTING:** During operation of the equipment, the suction works in conjunction with the skimmer to draw water from the bottom of the spa through the filter, keeping the spa sparkling clean.

**WATER DIVERTER VALVE (2 sizes):** The large diverter is used to divert water to various seats in the spa. The smaller diverter is used to divert water to the neck jets and/or waterfalls. Turn handle only when pump is on low speed.

## NO HEAT OR HEAT TOO LOW

Probable Cause	Recommended action
Breaker at house OFF.	Reset breaker at house. Breaker can appear to be on and one pole can be off. Turn breaker OFF then ON twice.
Inadequate water flow due to dirty filter.	Clean filter cartridge(s).
Pump not primed.	Refer to the section of this manual on pump priming. O-ring may be missing or damaged on air bleeds.
Improper line voltage.	Have a <b>licensed electrician</b> check the line voltage.

## SPA LIGHT WON'T COME ON

Probable Cause	Recommended action
Light bulb burnt out.	Replace bulb. (non-warranty)
Dirty connection	Check to see if there is anything covering the connection on the housing that holds the light bulb.

## PUMP WILL NOT PRIME

Probable Cause	Recommended action
Pump(s) on but no water flow	Loosen top bleeder valve on pump(s) until water comes out steadily.
No water in pump	Make sure water level in spa is midway in skimmer wall fitting/ bleed top air on face of pump till water flows out.
Air lock	Bleed off air at bleeder valve.
Closed gate valves or blocked lines	Open gate valves/check skimmer, suction for blockage.
Pump surges (jets lose power then come back, then lose power again)	Check filter air relief valve to insure o-ring is in place and is tightly closed. Check union on front of pump to ensure tightness. Check bleeder valve on front of pump to ensure tightness.

## JETS WON'T COME ON

Probable Cause	Recommended action
Jets turned off	Turn jet face to open jets.
Pump not primed	Refer to the section in this manual on pump priming.
Gate valves closed	Check that both gate valves are in the up positions, or turned open.

## LOW WATER FLOW

Probable Cause	Recommended action
Dirty filter	Remove filter cartridge and clean.
Closed gate valves or blocked lines	Open all gate valves.
Low voltage or incorrect voltage	Have a licensed electrician check the line voltage.

## SPA IS LEAKING

Probable Cause	Recommended action
Loose connection	Hand tighten all quick disconnects and fittings, check gaskets and o-rings.
If water appears near, below filter area	Splashing water into the filter canister area will drain slowly to the base.

## PUMP MOTOR DOESN'T RUN

Probable Cause	Recommended action
No power to motor	Check power switches and circuit breakers. Check motor plug into control panel.
Blown fuse	Replace pump fuse.
Thermal overload has tripped	Wait until motor cools off.
Pump jammed from foreign matter in impeller	Call dealer for recommended action.
Motor overheats during hot days while filtering	Reprogram your controls to cycle during the coolest parts of day or shorter cycles.

## PUMP MOTOR RUNS HOT

Probable Cause	Recommended action
Pump ran dry	Call dealer for recommended action.
Motor vent is blocked	Clear debris or obstruction to the motor vent.
Restricted suction lines	Make sure all valves are open and clear suction of debris.

NOTE: These motors will feel hot to the touch. This is normal. The internal overload protector will turn the motor off if there is an overload or high temperature problem.



## Troubleshooting Guide

### FLOATING REMOTE DOESN'T WORK

Probable Cause	Recommended action
Low battery power	Replace with new batteries.
Programming of remote is incorrect	Refer to remote control user's instructions included with your spa.

### RADIO/CD PLAYER

Problem	Recommended action
If CD player doesn't read CDs:	<ul style="list-style-type: none"> <li>• Try other CDs.</li> <li>• Clean the CD Player heads (by using special cleaning CD).</li> <li>• Read the Sony instruction book provided to you.</li> </ul>

### DVD/CABLE

Problem	Recommended action
No sound or video when playing DVD or watching CABLE	<ul style="list-style-type: none"> <li>• Increase CD player volume.</li> <li>• In order to set the audio for DVD/CABLE, turn on the Radio/CD player by pressing ON/OFF button on floating remote control. Press the button again to switch to AUX (auxiliary input).</li> <li>• Check for the blown LCD Monitor FUSE 5A (fuse #1).</li> <li>• Verify that Monitor mode is at Video (DVD).</li> <li>• Or verify that Monitor mode is at TV (Cable).</li> <li>• Make sure the DVD video disc works with sound/video in other DVD players.</li> <li>• Make sure the monitor is ON.</li> <li>• Verify that the Stereo is NOT on ATT.</li> </ul>

### LCD MONITOR

Problem	Recommended action
No power	<ul style="list-style-type: none"> <li>• Check for blown 5A fuse. Fuse #1 in the fuse box.</li> <li>• Using Monitor's original remote control, press ON/Off button, being sure to hold the controller very close to the screen (within four inches).</li> </ul>

LCD Monitor doesn't respond to floating remote control or B.O.S.S.	<ul style="list-style-type: none"> <li>• Reprogram the floating remote control. Follow instructions on how to program floating remote control or B.O.S.S.</li> </ul>
No sound	<ul style="list-style-type: none"> <li>• Increase volume on your stereo with either floating remote control or manually.</li> <li>• With original LCD Monitor remote control, press Volume Up button, being sure to hold the controller very close to the screen (within four inches) until you see volume bar on the screen filed to Maximum. Repeat with original DVD remote control.</li> <li>• Turn on the Radio/CD player by pressing ON/OFF button on floating remote control; press the button again to switch to AUX (auxiliary input).</li> </ul>
No picture	<ul style="list-style-type: none"> <li>• Check if DVD is powered ON.</li> <li>• Check if Monitor is powered ON.</li> <li>• On your floating remote, press TV then PLAY button until display message on your monitor shows VIDEO mode.</li> <li>• Try another channel or input source.</li> <li>• Apply Factory setup with the original Monitor's remote; refer to page 13 of LCD Monitor's owner's manual. Be sure to hold the controller very close to the screen (within four inches).</li> </ul>
Only snow appears on the screen	<ul style="list-style-type: none"> <li>• Check Cable/TV connection; refer to the stereo enclosure image shown in this manual.</li> <li>• With original Monitor's remote, press Auto Scan button. Be sure to hold the controller very close to the screen (within four inches).</li> </ul>

### AMPLIFIER

Problem	Recommended action
Subwoofer doesn't work	<ul style="list-style-type: none"> <li>• Check for blown 20A amplifier fuse (in the amplifier).</li> <li>• Adjust Bass setting. Refer to CD player user's manual.</li> </ul>

## B.O.S.S.

Problem	Recommended action
If B.O.S.S. loses communication:	<p>You have to force the remote to synchronize as follows:</p> <ul style="list-style-type: none"> <li>• Hold the two bottom keys for 10 seconds (when the communication error message is displayed)</li> <li>• Press on the sync menu</li> <li>• Align remote to cradle for synchronization</li> </ul>
If B.O.S.S. remote does not respond:	<ul style="list-style-type: none"> <li>• Put the remote in the cradle and leave it there for 24 hours to charge</li> <li>• Press on HOME - NEXT - OPTIONS - SLEEP - answer 'yes'</li> <li>• Insert the remote inside the cradle</li> <li>• Spa should then function</li> </ul>

## INTERNATIONAL CUSTOMERS AUDIO/VISUAL TROUBLESHOOTING

Problem	Recommended action
There's no picture	<ul style="list-style-type: none"> <li>• Refer to LCD Monitor troubleshooting presented in this guide.</li> <li>• Using Monitor's original remote, press SOURCE button, being sure to hold the controller very close to the screen (within four inches) until display message on your monitor shows VIDEO.</li> </ul>

There's no sound when watching Cable/TV	<ul style="list-style-type: none"> <li>• With Monitor's original remote control, press <b>Volume UP</b> button until you see the volume bar filled up to maximum.</li> <li>• Repeat with DVD remote control.</li> <li>• Turn ON the Modulator Switch found on the right side of the DVD Player and set the Radio to 89.1 FM.</li> <li>• Check the Modulator Fuse 5A (#4 in the fuse box).</li> </ul>
DVD will not play	<ul style="list-style-type: none"> <li>• There's no disc inside (NO DISC message appears on the front of the DVD Player).</li> <li>• Verify that Monitor mode is at Video (DVD).</li> <li>• Make sure the DVD video disc works with sound/video in other DVD players.</li> <li>• Make sure the monitor is ON.</li> <li>• Check for the blown LCD Monitor FUSE 5A (fuse #1).</li> <li>• Disc is upside down in DVD Player. Insert disc correctly, with label side up on disc tray.</li> <li>• The disc has been damaged. Change the disc.</li> <li>• Moisture has condensed inside the player. Remove disc and leave the player turned on for one hour.</li> </ul>
The remote doesn't function	<ul style="list-style-type: none"> <li>• Remove all the obstacles from the path of the IR remote sensor.</li> <li>• Point the remote at the IR sensor on the DVD Player.</li> <li>• Replace the batteries in the remote.</li> </ul>

# Wellness™ Series

## Wellness™ II & III

Heights: Wellness II = 53.0 in  
134.6 cm  
Wellness III = 48.5 in  
123.2 cm

