



Xpression LED Name Badge

User Guide

Key Features

- Red LED's for easy readability
- Compact/slim design
- Infrared programming
- 40 hours of operation from single 3V cell battery
- Power On/Off switch
- Message storage capacity of 118 characters
- Program letters, numbers and symbols (English Characters Only)
- Memory backup when power removed
- Magnetic clip to prevent damage to clothing

Contents

Unpacking
Software Installation
Set-up
Programming
Troubleshooting
Support



WARNING

This device uses a magnetic clip.
Do Not use with a Pacemaker.

Unpacking

The Pro-Lite Xpression kit includes the following items:

- 1) Cable with Infrared Transmitter
- 2) 1 Cell battery
- 3) Xpression LED name badge
- 4) Pro-Lite Name Badge software CD
- 5) User's Manual

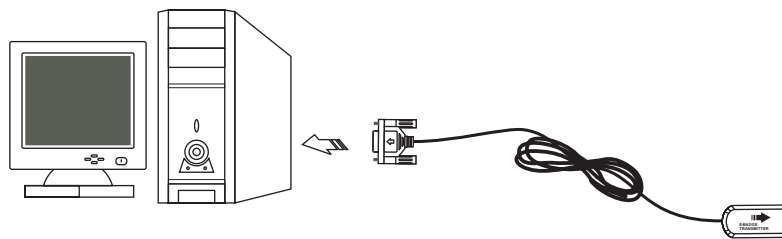
Software Installation

The Pro-Lite Name Badge software requires a PC system running the Windows® operating system.

- 1) Insert the included Pro-Lite CD into your PC CD-ROM reader.
- 2) The Pro-Lite software installer should begin automatically. If this does not occur, simply run the **Setup.exe** file located on the Pro-Lite CD.
- 3) Follow the message screens to complete the installation.

Set-Up

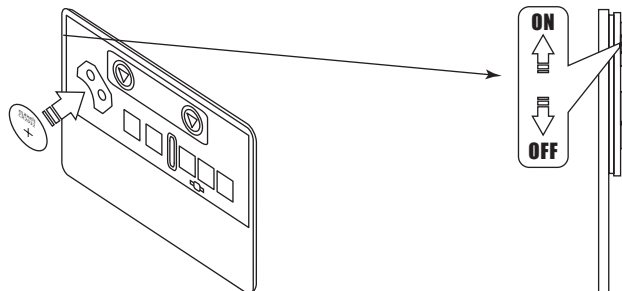
- 1) Connect **female connector** of supplied cable into the **9-pin com port** on the back of your computer.



- 2) Insert the **cell battery** into the battery slot on the back of the Xpression and turn the power switch to the ON position.

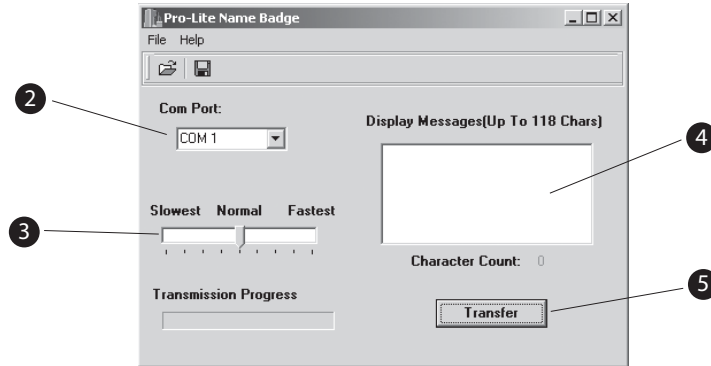


Insert battery with positive (+) marking facing up.

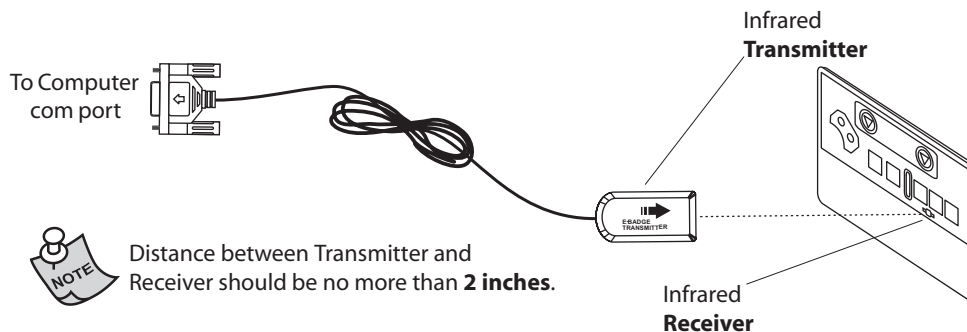


Programming

- 1) Start the Pro-Lite Name Badge Software by clicking START, PROGRAMS, and NAME BADGE.
- 2) Select the **Com Port** you are connected to.
See **Set-Up** or refer to your computer user guide for more information
- 3) Select **Scroll Speed**.
Speed at which message will scroll from right to left
- 4) Type your message in the **Display Message** area.
Max message up to 118 characters. Upper case letters only.



- 5) When you are ready to transfer your message into the Xpression, simply hold the Infrared Transmitter towards the Infrared Receiver on the back of the LED name badge, and click on **Transfer**.



- 6) A window will appear notifying you of the transmission completion when done.

Troubleshooting

- 1) I inserted the battery but the badge does not come on.
 - Make sure the battery on the badge was inserted properly.
 - Turn the power switch to the ON position.
(See **Set-Up**)
- 2) My badge will not program.
 - Make sure you connected the supplied cable to an available com port on your computer.
 - In the Name Badge Software, select the com port the cable is connected to.
(See **Set-Up** or refer to your computer user guide for more information).
- 3) My com port settings are correct, but the badge will not program.
 - It is imperative that the Infrared Transmitter be held as steady as possible during the entire duration of the data transmission.
 - Distance between Transmitter and Receiver should be no more than **2 inches**.
- 4) I am getting strange patterns on the LED screen.
 - Caused by programming interruption, reprogram the badge.
 - May indicate that the battery is low on power, replace the battery.
(Lithium battery part # **CR2032** which can be found at any local electronics store)

Support

Website: www.pro-lite.com

Email: support@pro-lite.com