



USER MANUAL



QUADRO

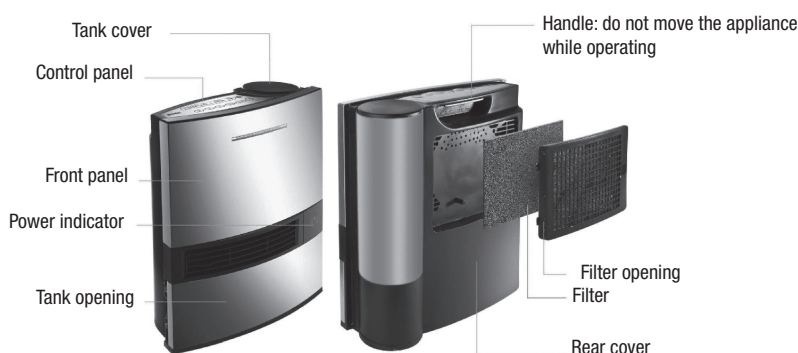
CERAMIC FAN HEATER WITH HUMIDIFIER,
AIR PURIFIER AND IONIZER

V01/08

READ AND SAVE THESE INSTRUCTIONS

Read carefully before attempting to assemble, install, operate or maintain the product described. Protect yourself and others by observing all safety information. Failure to comply with instructions could result in personal injury and/or property damage. Retain these instructions for future reference.

GENERAL SAFETY INFORMATION



1. Use this appliance only as described in this manual. Any other use not recommended by the manufacturer may cause fire, electrical shock, or injury to people.
2. Make certain that the power source conforms to the electrical requirements of appliance. (AC220-240V/50Hz)
3. Extreme caution is necessary when any appliance is used by or near children or invalids and whenever the appliance is left operating unattended.
4. To reduce the risk of electric shock, this plug is intended to fit in a correct outlet. If the plug of appliance does not fit fully in the outlet, contact a qualified electrician. Do not attempt to defeat this safety feature.
5. Where possible, avoid to use of extension cords because the extension cord may overheat and cause a risk of fire. Never use a single extension cord to operate more than one appliance.
6. Do not operate appliance with a damaged cord or plug or after the appliance malfunctions, has been dropped or damaged in any manner. Return appliance to an authorized service facility for examination, electrical or mechanical adjustment or repair.
7. If the supply cord is damaged, it must be replaced by the manufacturer or its service agent or a similarly qualified person in order to avoid a hazard.
8. Turn off the power switch and unplug power cord before servicing or moving the appliance. Always unplug appliance when not in use.

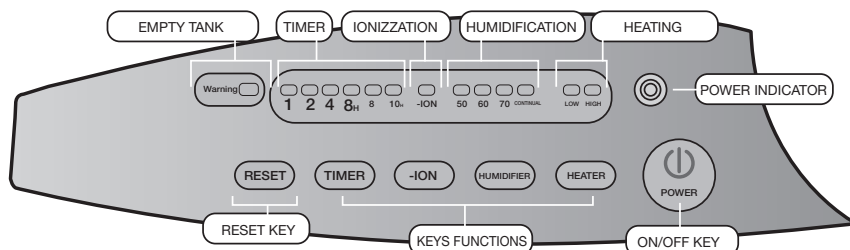
WARNING: DO NOT DEPEND ON THE ON/OFF BUTTON SWITCH AS THE SOLE MEANS OF DISCONNECTING POWER WHEN SERVICING OR MOVING THE APPLIANCE. ALWAYS UNPLUG THE POWER CORD.

9. To disconnect appliance, turn switch to off position, then remove plug from outlet. Pull only by the plug. Do not pull on the cord when disconnect appliance.
10. Do not insert or allow fingers or foreign objects to enter any ventilation or exhaust opening as it may cause an electric shock or fire or damage the appliance. Do not block or tamper with the appliance in any manner while it is in operation.
11. To prevent a possible fire, do not block air intakes or exhaust in any manner. Do not place appliance on soft surfaces, like a bed, where openings may become blocked.
12. Always place the appliance on a stable, flat, level surface when operating, to avoid the chance of the appliance overturning. Locate the power cord so the appliance or other objects are not resting on it. Do not run power cord under carpeting. Do not cover power cord with throw rugs, runners, or the like. Arrange power cord away from room traffic and where it will not be tripped over.
13. This appliance is hot when in use. To avoid burns, do not let bare skin touch hot surfaces. Always use handle when moving this appliance. Keep combustible materials, such as furniture, pillows, bedding, papers, clothes and curtains at least 0.9m from the front of the appliance and keep them at least 0.3m from the sides and rear.
14. A appliance has hot and arcing or sparking parts inside. It must not be used in potentially dangerous locations such as flammable, explosive, chemical-laden or wet atmosphere.
15. This appliance is not intended for use in wet or damp locations. Never locate a appliance where it may fall into a bathtub or other water container.
16. Do not use this appliance in the immediate surroundings of a bath, a shower or a swimming pool.
17. Do not use appliance outdoors.
18. In order to avoid overheating, do not cover the appliance.
19. The appliance must not be located immediately below a socket- outlet.

ATTENTION: HOT STEAM INSIDE! STEAM CONTAINED IN THE APPLIANCE AND COMING OUT FROM GRILLS SITUATED ON THE FRONT PANEL IS VERY HOT AND CAN CAUSE BURNS.

**WARNING: REDUCE THE RISK OF FIRE OR ELECTRIC SHOCK.
DO NOT USE THIS APPLIANCE WITH ANY SPEED CONTROL DEVICES.**

OPERATION



1. HOW TO SWITCH ON THE APPLIANCE AND FAN ONLY (COOL AIR)

Plug the heater in order to connect the appliance to the electrical network. Press the switch on the rear of the unit by setting it on I - ON. An acoustic alarm will point out the appliance is powered on and the light ON/OFF on the control panel switches on. If you do not press the key ON/OFF the only active key is TIMER for the delayed starting (see point 6 for the operation).

If you do not press the key ON/OFF on the control panel the appliance emits only cool air and the light on the front panel switches on

2. HOW TO SWITCH OFF THE APPLIANCE

If you want to switch the appliance off, press the key ON/OFF until the blue light on the front panel switches off. In order to remove the electrical power press the switch on rear of the unit and set it in position 0 - off and remove the plug.

3. FUNCTIONING OF THE KEY HEATER (= HEATING)

This appliance can run in two heating powers. You can choose the power by pressing the key HEATER on the control panel.

If you press the key HEATER you can choose two heating powers: low power LOW and high power HIGH, the corresponding lights will switch on. When LOW or HIGH heating power are choosed if temperature is above 26°C, the appliance will stop heating. If the temperature is below 22°C, the appliance will start to heat again.

Press again the key HEATER in order to stop heating.

4. OPERATION OF HUMIDIFIER KEY(= HUMIDIFIER) AND HUMIDIFICATION SPEED

This appliance can work in different humidification speeds that you can choose by pressing the key HUMIDIFIER on the control panel.

Please switch on the appliance according to the sequence described at point 1. By pressing the key HUMIDIFIER you can choose different humidifier percentages: 50, 60, 70 % or continuous CON. The lights on the control panel will light in sequence.

Press again HUMIDIFIER key if you want to remove the function HUMIDIFIER.

ATTENTION: on the control panel a light WARNING points out when the water tank is empty.

When the light WARNING is on it is not possible to select different humidification speeds. If you press HUMIDIFIER when the light WARNING is on you cannot add just the humidification as above described since it is not active.

After adding water, press key RESET and the light will disappear and the the function HUMIDIFIER will still work.

5. OPERATION OF THE TIMER FROM 1 TO 8 H

This appliance is equipped with timer in order to program the operation from 1h to 8 h.

Press the key TIMER in order to select 1, 2, 4, 8 h operation. The indicator situated under the inscription OFF TIMER on the control panel lights and points out that the operation has been programmed.

Press the key TIMER until the light switches off if you want to delete the programming of the timer

6. OPERATION OF THE TIMER FOR THE DELAYED STARTING AFTER 8 OR 10 H.

This appliance is equipped with timer for the delayed starting after 8 or 10 h.

Press the key ON/OFF on the control PANEL in order to switch off the appliance (the blue light on the front panel must be switched off).

Press the key TIMER until the red lights under the inscription WORK TIMER 8 h or 10 h for the delayed starting switch on.

This function allows you to begin to heat the environment respectively after 8 h or 10 h.

Press the key TIMER until the light switches off if you want to delete the programming of the timer.

7. OPERATION OF THE KEY ION (= IONIZATION)

This appliance is equipped with ionizer for the emission of negative ions that give to the environment a sensation of welfare and sparkling air. In order activate the ionization function, press the key ion and the light switches on.

In order to deactivate this function press the key ION and the light switches off.

If you disable the ionization in an environment with a percentage of humidity above 65%, negative ions will be generated for 15 minutes again.

8. MEMORY FUNCTION

After switching off the appliance with the key ON/OFF, the last settings will remain in the memory of the appliance.

9. AUTOMATIC SHUTDOWN

In order to avoid to forget to switch the appliance off after use, the appliance stops working automatically after 12 h and only the light ON/OFF remains on.

10. OVERTURNING DEVICE

When the heater is subjected to strong shock or is reversed, the appliance stops to switch on since the overturning device intervenes.

HOW TO FILL THE WATER TANK

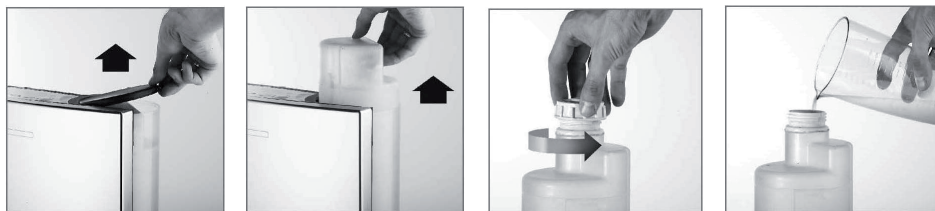
Remove the plug from the socket before filling the water tank. Do not add additives (salts, perfumes etc).

In order to add water into the tank, as pointed out in the pictures below, before opening the cover above the water tank, raise the tank from the unit, unscrew the cover add water until the water tank is full. Screw the cover and then reposition it into the unit.

Water added must be clean.

Once you have finished to use the humidification function, we suggest to empty and rinse the water tank completely.

If you do not follow this instruction the water conductivity could increase due to the deposit of salts that cannot evaporate and the appliance could damage.



TROUBLESHOOTING TIPS

If your heater shuts off unexpectedly or fails to operate, one of the above-mentioned safety features may have activated to prevent overheating.

1. Be sure the power cord is plugged into a working electrical outlet.
2. If the appliance does not heat even if the lights HEATER on the control panel are on, the appliance could be off due to the achievement of the temperature of 26°C, as pointed out in the paragraph 3 in the section "Operation"

MAINTENANCE



WARNING: ALWAYS UNPLUG THE CORD BEFORE MOVING OR SERVICING.

**WARNING: DO NOT TRY TO OPEN THE APPLIANCE
DO NOT IMMERSE HEATER IN WATER**

CLEANING: Clean the filter net at least once a month, more often if dirty. A dirty filter could restrict the air flow and cause the heater to function improperly or shut down.

Do not attempt to remove inlet grill from the heater

1. Unplug the heater from power source.
2. Vacuum rear grill area of heater with vacuum brush attachment to remove lint and dirt from internal filter. Do not remove grill guard or allow heater to be operated without grill guard in place.
3. Clean the body with a soft cloth. (NEVER USE ALCOHOL OR SOLVENTS)

HOW TO CLEAN THE ANTIDUST AND ANTIPOLLENS FILTER CONTAINED IN THE REAR OF THE APPLIANCE

If there is too much dust on the filter, this will not allow a good operation of the appliance.

Thus clean the filter at least once a month. Once the appliance is switched off and the plug is removed from the socket, open the opening of the filter on the rear and remove the filter.

Wash it and let it dry in air if it is wet, then clean it with the brush of a vacuum cleaner.

HOW TO CLEAN THE WATER TANK AND THE FILTER INSIDE

Open the opening of the water tank, remove the tank in order to clean it.

The filter and the water tank can be cleaned with water. We suggest to substitute the filter once a year. After cleaning it reposition the water tank into its place. Be sure the installation is correct. Connect the appliance to the electricity network and make sure the appliance works correctly. If the appliance does not work, check if the water tank is installed correctly.

STORAGE: Store the appliance with these instructions in the original carton in a cool, dry place.



www.argoclima.com

MADE IN CHINA