



Electrical Products Catalogue



www.idealindustries.co.uk

IDEAL INDUSTRIES LIMITED
Unit 3, Europa Court, Europa Boulevard, Westbrook, Warrington, Cheshire, WA5 7TN, United Kingdom
Tel: +44 (0)1925 444446, Fax: +44 (0)1925 445501, Email: uksales@idealinwd.com

International offices: Australia • Brazil • Canada • China • France • Germany • Mexico • UK
For complete sales office contact information, visit us at www.idealindustries.co.uk.

Rev. 10/10
Printed in UK
Form No. P-1658UK
©2010 IDEAL INDUSTRIES, INC.

Innovation with a Purpose



www.idealindustries.co.uk

IDEAL Electrical Products Catalogue:

Innovation with a Purpose.

J. Walter Becker founded IDEAL in 1916 and made a promise that is still an important part of the way IDEAL operates today: “An IDEAL product will provide a value greater than the price paid for it. Service is a part of the product.” Becker’s founding principle represents our everyday commitment to you. It’s the driving force behind our partnerships with the world’s leading distributors, a state of the art delivery system, outstanding customer and technical support and variety of operational benefits designed to save time and money. It means we’re proud of the way we do business. Reaching our distributors and customers requires that we have facilities all over the world. IDEAL’s headquarters are located in Sycamore, Illinois with European operations in the UK, Germany and France.

Products
Over 6,000 items make up the IDEAL family of products including some whose names have become synonymous with their function. Wire-Nut® & In-Sure™ Wire Connectors, Yellow 77® Wire Pulling Lubricant, SureTest® Electrical Testers and T®-Stripper Wire Strippers are products which have found their way into the tool bags of electrical and networking professionals and solidified the IDEAL reputation as a manufacturer of innovative and trustworthy products. Every IDEAL product comes with the promise made by our founder more than 90 years ago.

Electrical
Residential, commercial and industrial electricians have come to depend on IDEAL for quality electrical products. Our electrical line contains just about everything an electrician might need for an easier, more efficient job: industry standard wire connectors, fish tapes, wire pulling lubricants, wire strippers, hand tools, safety supplies and a comprehensive family of rugged, versatile and easy-to-use test and measurement instruments.

Networking
IDEAL is dedicated to helping telecom/datacomm professionals keep networks up and running. The system of products we’ve thoughtfully crafted ensures the highest quality terminations with the ease-of-use you’d expect from IDEAL. Our Networks line includes tools, test equipment and products for twisted pair, coax and fibre optic cabling.

www.idealindustries.co.uk



Table of Contents

Electrical Testing

Insulation Meters	2
Installation Tester	3
Earth Ground Resistance Meters	4
Clamp Meters	5
Multimeters	9
Digital Circuit Breaker Finder	13
Circuit Tracers	14
Voltage Performance Monitor	16
Voltage Testers	17
3-Phase/Motor Rotation Tester	18
Thermal Imaging Camera	19
Infrared Thermometer	20
Digital Light Meter	20
Accessories	21

Electrical Installation

Fish Tapes	22
Cable Pulling Rods	24
Wire Pulling Lubricants	25
Wire Strippers	27
Cable Cutters	29
Tool Bags & Totes	30
Wire Connectors	31
Lockout/Tagout Kits (electrical safety)	34

Network Testing

LAN Cable Certifiers	35
Fibre Optic Testers	36
LAN Cable Qualifiers	38
LAN Testers/Verifiers	39
CCTV Tester	41

Network Installation

Data Termination Tools	42
Data Stripping & Cutting Tools	43

Digital Insulation Meter

Insulation is subject to many effects which can cause it to fail, including mechanical damage, vibration, excessive heat or cold, dirt, oil, corrosive vapours, moisture or humidity. The IDEAL Digital Insulation Meter is the tool every professional needs to determine whether the insulation is performing at an effective and safe level. During installation or routine maintenance, the Digital Insulation Meter identifies capacitive, absorption and leakage current, helping to prevent problems before they result in injury or equipment failure.

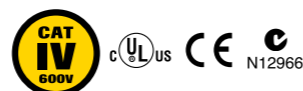
FEATURES

- Test voltages at 50/100/250/500/1000V
- Automatic calculation of PI and DAR
- Auto sensing AC/DC voltage to 600V
- Low Pass Filter – filters out high frequency noise
- Earth-bond resistance
- Test inhibition if >30V
- Digital reading with analogue arc
- Compare pass/fail mode
- Remote test probe
- Store/recall memory
- Auto discharge
- Auto power off
- Backlit display – auto sensing
- Low battery indication
- Carrying case included
- CAT IV – 600V
- 2-year warranty



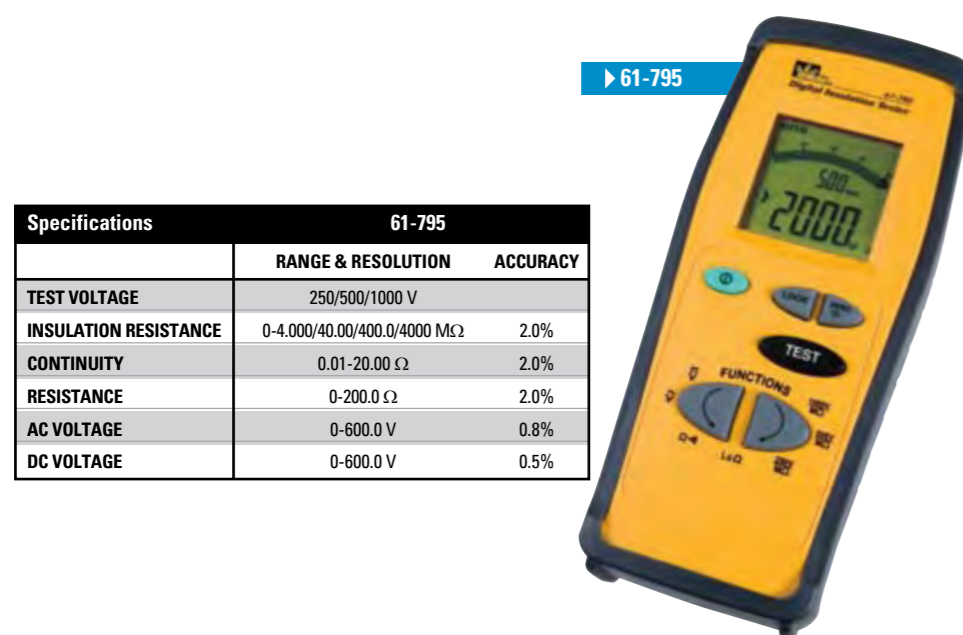
► 61-797

Specifications	61-797
	RANGE & RESOLUTION
TEST VOLTAGES	50/100/250/500/1000 VDC
VOLTAGE AC/DC	0.1-600.0 VΩ
INSULATION RESISTANCE	up to 20G Ω
EARTH-BOND RESISTANCE	0.1-40.00K Ω



Hand-held Insulation Tester

The hand-held insulation tester is designed to check new installations for proper insulation, existing installations and motor windings for breakdowns in insulation.



► 61-795

Specifications	61-795
	RANGE & RESOLUTION ACCURACY
TEST VOLTAGE	250/500/1000 V
INSULATION RESISTANCE	0-4.000/40.00/400.0/4000 MΩ 2.0%
CONTINUITY	0.01-20.00 Ω 2.0%
RESISTANCE	0-200.0 Ω 2.0%
AC VOLTAGE	0-600.0 V 0.8%
DC VOLTAGE	0-600.0 V 0.5%

FEATURES

- Test Voltage at 250/500/1000V
- Test inhibition > 25V
- Default voltmeter to 600V AC/DC
- Digital display with analogue arc
- Auto discharge
- Auto power off
- Auto ranging
- Protective rubber boot
- Continuity
- Low battery indication
- CAT IV - 600V
- Includes carrying case
- 2-year warranty



SureTest® Installation Tester

IDEAL developed the SureTest® Installation Tester to provide electricians with all the features they need for testing domestic, commercial and industrial fixed wiring installations to BS7671:2008 (17th Edition) Wiring Regulations.

► 61-255



FEATURES

- EN 61557/BS7671:2008 Compliant
- Super bright OLED display
- Ultra-lightweight
- Remote probe and calibration certificate included
- 2-year warranty

DESCRIPTION

SureTest® Installation Tester 61-255

ACCESSORIES

Includes	
UK Main Power Plug	TLMP-255UK
Remote Probe	TL797-RP
Carrying Case	3010-12-0001
3-wire test lead set	TL-255



Installation Tester

Auto-RCD mode saves trips back and forth to the distribution board. Once the Test button is pressed, resetting of the RCD is all that's required.



Installation Tester

The "NULL" feature allows you to reliably zero out test lead resistance assuring accurate R1 + R2 continuity measurements.



Installation Tester

Irrespective of whether the high current or non-tripping loop range is selected, fast and accurate results are guaranteed. At the same time the PEFC/PSCC value is calculated and displayed.

Measurement Functions	
Voltage and Frequency	•
Wiring Polarity	•
Insulation resistance	250, 500, 1000V
Continuity	•
Loop & Line Resistance	•
PEFC/PSCC	•
RCD Tripping Time	•
Ramp Test	•
Auto RCD	•
Phase Sequence Indicator	•
Touch Voltage	25V/50V



Ground Resistance Clamp Meter

In electrical systems the earth electrode provides the return path for fault currents, and for safety, all electrical equipment frames are connected to ground. We enable electricians to test a grounding system quickly and efficiently. Every IDEAL ground resistance meter is designed for maximum performance, safety and accuracy.

FEATURES

- Larger Clamp Size (32 mm / 1.25")
- Backlight
- Ground resistance (0.1 to 1200Ω)
- Ground leakage current to 30A
- Ground continuity loop test
- Audible alarm
- Data Storage
- Data hold
- Calibration loop included
- Resistance Accuracy: 1.5%
- Leakage Current Accuracy: 2.0%
- Auto-power off
- Auto ranging
- Cat III - 300V
- Carrying case included
- Saves up to 99 measurements
- 2-year warranty

▶ 61-920



Clamp meters do a lot more than just measure current

The most common and simplest method professionals use to measure current is with a clamp meter. The advantage of measuring current with a clamp meter is that readings can be taken without opening a circuit.

But IDEAL clamp meters do much more. They contain all the functions of a multimeter plus include ground-breaking innovations such as our patented TightSight™ clamp meter, which allows you to see measurements in tight, hard-to-reach spaces via an innovative display on the bottom.

Next time you're choosing a clamp meter, choose one that incorporates innovation with a purpose.

Series	740		760		770	
	61-744	61-746	61-763	61-765	61-773	61-775
CLAMP METER SELECTION GUIDE						
MEASUREMENT FUNCTIONS						
AC Voltage	•	•	•	•	•	•
DC Voltage	•	•	•	•	•	•
AC Current	•	•	•	•	•	•
DC Current				•		•
Resistance	•	•	•	•	•	•
Audible Continuity	•	•	•	•	•	•
Capacitance			•	•	•	•
Frequency			•	•	•	•
FEATURES						
Display Type (Analogue or Digital)	D	D	D	D	D	D
AC Current Capacity	600	600	660	660	1000	1000
DC Current Capacity			660	660		1000
True RMS		•	•	•	•	•
Auto/Manual Ranging	•	•	•	•	•	•
Data Hold	•	•	•	•	•	•
Peak Hold			•	•	•	•
Min/Max			•	•	•	•
DCA Zero			•	•	•	•
Auto Power Off	•	•	•	•	•	•
Non-Contact Voltage Indication	•	•				
Backlight			•	•	•	•
Low Battery Indication	•	•	•	•	•	•
Overload Protection	•	•	•	•	•	•
Conductor Size - Inches (mm)	1.25" (32)	1.25" (32)	1.4" (36)	1.4" (36)	2.0" (51)	2.0" (51)
Warranty (years)	2	2	2	2	2	2
CERTIFICATIONS						
UL 61010 Listed	•	•	•	•	•	•
CAT Rating	III	III	IV	IV	IV	IV
CE	•	•	•	•	•	•

Earth Ground Resistance Tester

▶ 61-796
Earth Ground Resistance Tester



FEATURES

- 2- & 3-point fall of potential methods
- Auto ranging
- Auto power off
- Cat III - 200V
- TL-796 lead set included
- 2-year warranty

▶ TL-796
Earth Resistance Lead Set Kit
Kit includes three test leads with crocodile clips (1 x 5m and 2 x 33m) on reels, (2) auxiliary grounding spikes



Specifications	61-920		61-796	
	RANGE & RESOLUTION	ACCURACY	RANGE & RESOLUTION	ACCURACY
GROUND RESISTANCE	0/120/1200 Ω	1.5%	20.00/200.0/2000 Ω	2.0%
GROUND LEAKAGE CURRENT	100m/1000m/15/30 A	2.0%	—	—



Safety First!
The complete line of industrial clamps from IDEAL was designed to set a new standard for safety technology. It starts with the revolutionary TightSight™ display. It allows an electrician to keep his head and face out of potentially dangerous panels while viewing the measurement. The high voltage indicator is another feature not to be taken for granted. It indicates the presence of voltage even with the dial set to the wrong function. The CAT III and IV ratings, rugged construction and UL listing should give every electrician the confidence to go about the job without worrying about equipment safety.

Audible and visual high voltage indication over 30V AC/DC on all functions

Contains all the capabilities of a full-function multimeter

One-touch backlight button for glowing green display illumination

Tapered jaws with hook tip for tight locations and easy wire separation

Data hold button and offset thumb wheel for one-handed operation

Large numbers and symbols are easy-to-read

Patented backlit TightSight™ display for viewing in dark, bright or tight locations

Hinged rubber cover prevents display damage (field replaceable)

TightSight™ Clamp Meters 660 Amp (760 Series)

Built to professional quality standards to withstand tough use in commercial and industrial settings. The High Frequency Rejection (HFR) feature measures accurately even in noisy electrical environments. For everything from load measurement to troubleshooting industrial motors and adjustable speed drives (ASDs), the new TightSight™ Clamps bring speed, accuracy, safety and ease-of-use together in one rugged meter line.

FEATURES

- TightSight® bottom display
- Tapered jaws with hook tip
- Measures AC Current
- True RMS
- AC/DC Voltage
- Selectable audible and visual voltage alerts on AC/DC voltage functions
- Frequency via clamp head or test leads
- Resistance
- Capacitance
- High Frequency Rejection*
- Peak hold
- Max/min
- Data hold
- Audible continuity
- Selectable auto power off
- Backlit display
- Low Battery Indicator**
- Includes leads, alligator clips and case
- CAT IV – 600V rating
- CAT III – 1000V rating
- 2-year warranty

ACCESSORIES

Includes

Carrying Case	C-760
Test Leads w/Crocodile Clip	TL-104



► 61-763

660AAC with true RMS, capacitance & frequency

► 61-765

660AC/DC with true RMS, capacitance & frequency

760 Series	61-763	61-765	
	RANGE & RESOLUTION		ACCURACY
AC CURRENT	0.0-660.0A		2.0%
DC CURRENT	—	0.0-660.0A	2.0%
AC VOLTAGE	0.0-750.0V		1.0%
DC VOLTAGE	0.0-999.9V		1.0%
RESISTANCE	0.0-9999Ω		1.5%
CAPACITANCE	0.0-999.9μF		5.0%
CONTINUITY	0.0-999.9Ω		Audible at >30Ω
FREQUENCY	20.0-400.0Hz		0.5%

Jaw Size 36 mm (1.42")



TightSight™ Clamp Meters 1000 Amp (770 Series)

All the features of the 760 Series but with a measurement range up to 1,000 Amps



► 61-773

1000 AAC with true RMS, Capacitance & Frequency

► 61-775

1000A AC/DC with true RMS, capacitance & frequency

770 Series	61-773	61-775	
	RANGE & RESOLUTION		ACCURACY
AC CURRENT	0.0-999.9A		2.0%
DC CURRENT	—	0.0-999.9A	2.0%
AC VOLTAGE	0.0-750.0V		1.0%
DC VOLTAGE	0.0-999.9V		1.0%
RESISTANCE	0.0-9999Ω		1.5%
CAPACITANCE	0.0-999.9μF		5.0%
CONTINUITY	0.0-999.9Ω		Audible at >30Ω
FREQUENCY	20.0-400.0Hz		0.5%

Jaw Size 51 mm (2")



FEATURES

- TightSight® bottom display
- Tapered jaws with hook tip
- Measures AC Current
- True RMS
- AC/DC Voltage
- Selectable audible and visual voltage alerts on AC/DC voltage functions
- Frequency via clamp head or test leads
- Resistance
- Capacitance
- High Frequency Rejection*
- Peak hold
- Max/min
- Data hold
- Audible continuity
- Selectable auto power off
- Backlit display
- Low Battery Indicator**
- Includes leads, alligator clips and case
- CAT IV – 600V rating
- CAT III – 1000V rating
- 2-year warranty

ACCESSORIES

Includes

Carrying Case	C-770
Test Leads w/ Crocodile Clip	TL-104



Clamp-Pro™ Clamp Meters 600 Amp (740 Series)

A full featured, easy to use, low cost clamp meter that is ideal for measuring AC current up to 600 Amps.

FEATURES

- Measures up to 600AAC
- Non-contact voltage indicator (70V–600VAC)
- Tapered jaws with hook tip
- Auto/manual ranging
- Data hold
- Auto power off
- Low battery indicator
- 2-year warranty

ACCESSORIES

Includes	
Carrying Case	C-90
Test Leads	TL-103



▶ 61-746
True RMS

▶ 61-744

740 Series Specifications		61-744	61-746
	RANGE & RESOLUTION	BASIC ACCURACY	
AC CURRENT	40.00/400.0/600A	1.7%	1.7%
AC VOLTAGE	400.0/600 V	1.2%	1.2%
DC VOLTAGE	400.0/600 V	0.5%	0.5%
RESISTANCE	400.0/4.000k/ 40.00k 400.0k/4.000M/40.00M Ω	1.0%	1.0%

Jaw opening is 32 mm (1.25").



Just what a meter should be –
reliable, safe and easy to use

Digital multimeters let you do more than take AC/DC voltage readings – they allow you to measure resistance, continuity, capacitance and frequency. Our digital multimeters are packed with features such as auto/manual ranging, capacitance and True RMS measurements. There’s an IDEAL digital multimeter for every environment – commercial, industrial and residential.



MULTIMETER SELECTION GUIDE	61-096	310 61-310	312 61-312	340 61-340	342 61-342	600 61-605
MEASUREMENT FUNCTIONS						
AC & DC Voltage	•	•	•	•	•	•
AC Current	•	•	•	•	•	•
DC Current		•	•	•	•	
Resistance	•	•	•	•	•	•
Audible Continuity	•	•	•	•	•	•
Diode Test		•	•	•	•	•
Capacitance			•	•	•	
Frequency			•	•	•	
Temperature		•	•	•	•	
Duty Factor				•	•	
Battery Test		•				
FEATURES						
Digital Display Type	•	•	•	•	•	•
True RMS					•	
Auto/Manual Ranging		•	•	•	•	•
Data Hold	•					•
Min/Max				•	•	
Relative Mode				•	•	
Auto Power Off	•	•	•	•	•	•
Backlight				•	•	
Low Battery Indication	•	•	•	•	•	•
Overload Protection on All Ranges	•	•	•	•	•	•
Warranty (years)	2	2	2	2	2	2
CERTIFICATIONS						
UL 61010 Listed	•	•	•	•	•	•
CAT Rating	III	II	II	III	III	II
CE	•	•	•	•	•	•

Resi-Pro™ Multimeters (310 Series)

General purpose digital multimeters with a choice of either manual or auto ranging models.

FEATURES

- AC/DC voltage
- Current
- Resistance
- Audible continuity
- Temperature
- Data hold
- 2-year warranty

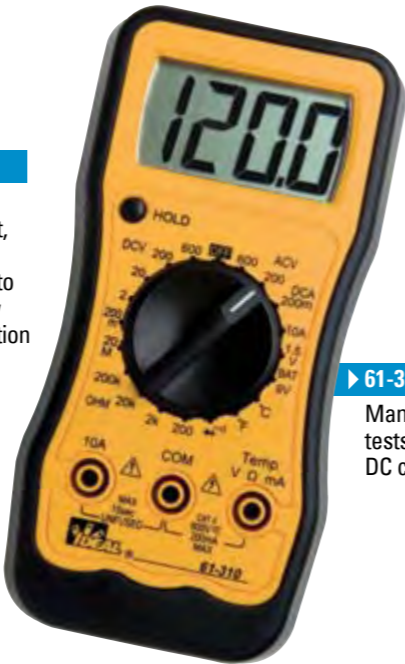
ACCESSORIES

Includes

Test Leads	TL-310
------------	--------

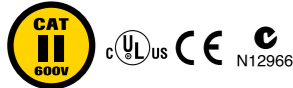


▶ 61-312
Auto ranging, AC/DC current, capacitance, frequency, auto power off, low battery indication



▶ 61-310
Manual ranging, tests batteries, DC current

310 Series Specifications		61-310	61-312
	RANGE & RESOLUTION	ACCURACY	ACCURACY
AC VOLTAGE	200.0/600 V	1.2%	4.000/40.00/400.0/600 V 1.2%
DC VOLTAGE	200.0m/2.000/20.00/200.0/600 V	0.5%	400.0m/4.000/40.00/400.0/600 V 0.5%
CURRENT	200.0m/10.00 ADC	1.5%	400.0µ/4000µ/40.00m/400.0m/10.00 A AC/DC 1.5%
RESISTANCE	200.0/2.000k/20.00k/200.0k/20.00M Ω	1.0%	400.0/4.000k/40.00k/400.0k/4.000M/40.00M Ω 1.0%
CAPACITANCE	—	—	40.00n/400.0n/4.000µ/40.00µ/400.0µ F 3.0%
FREQUENCY	—	—	10.00/100.0/1.000k/10.00k/100.0k/1.000M/10.00M Hz 0.3%
TEMPERATURE	-4-1382°F (-20-750°C)	2.5%	-4-1382°F (-20-750°C) 2.5%



Measures Temperature



Tests capacitors (61-312)



Tests 1.5V/9.0V batteries (61-310)

Test-Pro™ Multimeters (340 series)

Professional full featured multimeters with the added benefit of a back-lit display.

FEATURES

- AC/DC voltage
- AC/DC Current
- Resistance
- Audible continuity
- Capacitance
- Frequency
- Temperature
- Backlight
- Min/max
- Relative mode
- Data hold
- Low battery indicator
- Auto power off
- 2-year warranty

ACCESSORIES

Includes

Test Leads	TL-103
Thermocouple	TC-340

Optional

Carrying Case	C-290
600A AC/DC Clamp Adaptor	61-334
Current Clamp Adaptor	61-451



▶ 61-342
True RMS



▶ 61-340



340 Series Specifications		61-340 / 61-342
	RANGE & RESOLUTION	ACCURACY
AC VOLTAGE	4000.0/40.00/400.0/1000 V	1.5%
DC VOLTAGE	400.0m/4.000/40.00/400.0/1000 V	0.5%
CURRENT	400.0µ/4000µ/40.00m/400.0m/4.000/10.00A AC/DC	1.5%
RESISTANCE	400.0/4.000k/40.00k/400.0k/4.000M/40.00M Ω	1.0%
CAPACITANCE	40.00n/400.0n/4.000µ/40.00µ/400.0µ F	3.0%
FREQUENCY	10.000/100.00/1.000k/10.00k/100.0k/1.000M/4000.00M Hz	0.3%
TEMPERATURE	-4-1382°F (-20-750°C)	3.0%



Split-Jaw™ Smart Meter

A fully automatic multimeter with the advantage of being able to measure AC current up to 200 Amps in single unshielded conductors.

FEATURES

- Measures 0.1-200AAC*
- Measures 1.3-750VAC
- Measures 0.1-1000VDC
- Measures 0.1-2000 Ω
- Audible continuity
- Data hold
- Integral lead storage
- Auto power off
- Low battery indication
- 2-year warranty

*Jaw opening is 0.6 in. (16mm) - up to 1/0 copper cable

ACCESSORIES

Includes	
Test Leads	TL-95
Optional	
Carrying Case	C-90



AC/DC Volts



AC Amps



Ohms/Continuity



► 61-096



Specifications 61-096		
	RANGE & RESOLUTION	ACCURACY
AC VOLTAGE	1.3 - 750 V	1.5%
DC VOLTAGE	1.8 - 1000 V -0.6 - 1000 V	1.0%
AC CURRENT	0.6 - 200.0 A	3.0%
RESISTANCE	0 - 2000 Ω	1.0%

Pocket Meter (600 Series)

A small, low cost digital multimeter with integral test leads that fits in your shirt pocket.

► 61-605



FEATURES

- Low cost, multi-function
- Convenient pocket size
- Built-in test stand
- Overload protection on all ranges
- Audible continuity, auto power off, test lead storage
- CAT III - 600V

Specifications 61-605		
	RANGE & RESOLUTION	ACCURACY
AC VOLTAGE	200.0m/2.000/20.00/200.0/600 V	4.0 %
DC VOLTAGE	200.0/2.000/20.00/200.0/600 V	2.0 %
RESISTANCE	200.0/2.000k/20.00k/200.0k/2.000M/20.00M Ω	3.0%

Digital Circuit Breaker Finder and Socket Tester

The IDEAL digital circuit breaker finder makes identifying fuses and circuit breakers quicker and easier than ever before. With its innovative 3-in-1 tester design, you can be confident that you are locating the correct circuit breaker or fuse supplying power to an AC socket or lighting fixture* without having to interrupt the circuit.

* Requires optional test lead set (61-184EU).

► 61-534EU



FEATURES

- Locates breakers and fuses quickly and accurately
- Check polarity and easily identifies common wiring faults
- Verifies presence of power
- Non-contact voltage sensor for 80 - 300 VAC
- Low battery indicator
- Optional 61-184EU probe kit for testing at light fixtures
- Comes with soft carrying case
- 2-year limited warranty

ACCESSORIES

Includes	
Soft Carrying Case	C-290
Optional	
Crocodile Clip & Probe Set	61-184EU

► 61-184EU



Specifications 61-534EU	
Operating Voltage	200-250VAC
Operating Frequency	47-63 Hz



Take the time-consuming guesswork out of tracing circuits

The right technology and the right design put the open/closed circuit tracers in a class by themselves. The latest from IDEAL brings a new level of performance, ease-of-use and safety to a previously frustrating, time-consuming task.

Open/closed circuit tracers are another example of how IDEAL takes innovation and applies it to make your job easier.

Selection Chart:	61-954	61-956	61-958
Transmitter	TR-958	TR-958	TR-958
Receiver	RC-954	RC-958	RC-958
Tracer Test Lead Set	TL-958UK	TL-958UK	TL-958UK
Inductive Clamp			IC-958
Battery Pack			BP-958
Magnetic Hanging Strap			61-565
Hard Carrying Case	C-954	C-954	C-958
Batteries	•	•	•
Instruction Manual	•	•	•

Three things to look for in an IDEAL Circuit Tracer: performance, ease-of-use and safety

Performance: Circuit tracing has often been called an inexact science. But, the four clearly defined modes of operation of the new Circuit Tracers bring you a revolutionary level of precision, confidence and minimal set up time. Search High, Search Low, Trace and Breaker Modes let you quickly select the proper sensitivity for your specific job. And, with easy-to-replace AA batteries, the tracer provides four times the tracing power of conventional 9-volt circuit tracers on the market.

Ease-of-Use: No circuit tracer has ever been so user friendly. Rather than blinking LED lights and difficult-to-decipher beeps, the super-bright SureTest models provide a numeric value between 0 and 99 and a variable pitch/tone audible indication. In addition, the peak detector provides instantaneous signal strength feedback. The RC-958 Receiver also features the only rotating display in the industry. Regardless of what position you put the receiver in, the display will orient itself so that the reading stays upright.

Safety: With a new level of circuit tracing comes a new level of safety. It starts with rugged construction. Every safeguard has been taken to make the Circuit Tracers durable and safe for the long term. Additionally, a high-energy fuse and CAT III 600V design give you the confidence to go about the job without worrying about equipment safety.



Transmitter and receiver take four standard AA batteries.

Transmitter will work on a de-energised circuit and won't affect RCDs and sensitive equipment on an energised circuit.

Open/Closed Circuit Tracers

FEATURES

- Identifies breakers and fuses
- Pinpoints opens and shorts
- Traces wires
- "0-99" display of signal strength
- Audible intensifies in tone/pitch
- Can be used on circuits 0-600V AC/DC
- Works on energised or de-energised circuits
- Four modes of sensitivity – search high, search low, trace and breaker
- Peak bar graph
- 2-year warranty

ACCESSORIES

Includes	
Fuse – High-energy, Fast-acting, 1A/1000V	F-958
Tracer Test Lead Set (includes 1-6 below)	TL-958UK
1. Outlet Plug Adaptor for Transmitter	TLOP-956UK
2. Blade Prongs for Lead Adaptors (2/set)	TLBP-956UK
3. Ground Prong for Lead Adaptor	TLGP-956UK
4. Alligator Clips for Lead Adaptors (2/set)	TLAC-956
5. 3 ft. Lead Adaptors for Transmitter (2/set)	TLA1-956
6. 25 ft. Lead Adaptor for Transmitter	TLA2-956
Optional	
Cradle for Receiver	CR-958



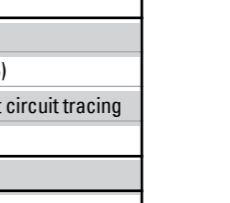
► 61-958

Super bright rotating OLED display receiver, transmitter, test lead set, inductive clamp, battery pack



► 61-956

Super bright rotating OLED display receiver, transmitter, test lead set



► CR-958

Cradle for Receiver
For use with extension pole for ceilings and flooring



► 61-954

Standard LED receiver, transmitter, test lead set

Circuit Tracer Specifications	
Transmitter:	
Operating Voltage	0 - 600V AC/DC
Battery Power	1.5V x (4) AA batteries (NEDA 15A, IEC LR6)
Battery Life	40 hours open circuit testing/25 hours short circuit tracing
Indicators	On/Off, Line energised, low battery
Receiver:	
Sensing	Magnetic
Battery Power	1.5V x (3) AA batteries (NEDA 15A, IEC LR6)
Battery Life	20 hours



Voltage Performance Monitor (VPM)

Power quality problems are frequently undetected until after an incident occurs – interrupting processes and possibly damaging equipment. Unless the source of the problem is identified and its cause diagnosed, repair costs can quickly add up.

VPM simplifies power quality issues by monitoring, logging and identifying voltage events at the source of power disruption.

FEATURES

- Real-time TRMS voltage, frequency and harmonics monitoring
- Logs voltage, sags, swells and impulses
- Measures %THD and logs periods over 3% (line to neutral)
- Selectable thresholds based on the most accepted international standards, defaults to ITIC*
- Custom programmable event thresholds
- Invertible display, when it is necessary to plug in upside down
- 2-year warranty

* Captures events that would affect equipment on branch circuit

ACCESSORIES

Includes	
Adaptors (set of 4)	PA-830
Carrying Case	61-179
Optional	
Crocodile Clip Adaptors (2-wire)	TL-532



► 61-830

► 61-179
Replacement
Carrying Case

► PA-830

Replacement
Adaptors
(set of 4)

Specifications	61-830
Operating Range	15-265V
Memory	512 events
Sampling Method	Continuous (128 samples per cycle)
Voltage Accuracy	1%
Impulse Detection	6µs, 4kV
THD	FFT calculation



Voltage Performance Monitor Display Screens

5 2 4 3
SAG SWL IMP THD
129V 60.0Hz 2.3%
08:39 06-22-2006

Monitor Screen: Real-time information on voltage, voltage events and harmonics.

1.0 kV
72 µs
08:43:40
08-24-06

Impulse Detail: Fast response catches positive and negative impulses up to 4kV.

Set Nominal
120V
Set Standard
ITIC

Set Standard: Select from more than a dozen threshold options based on existing standards or customize your own (defaults to ITIC).

Vol-Con® Elite Digital Voltage Tester

The popular Vol-Con® Elite is a voltage / continuity tester that gives an indication of voltage level via a series of LEDs. It also incorporates a non-contact voltage function. Supplied with GS38 compliant test leads.



► 61-090EU



FEATURES

- Digital circuitry for better resolution
- Tests for AC Voltage from 24-600VAC
- Tests for DC Voltage from 6-220VDC
- Audible continuity
- Non-contact voltage (40-600VAC)
- Low impedance to eliminate ghost voltages
- Low battery indicator
- Replaceable GS38 compliant test leads
- Integral lead storage
- 2-year warranty

ACCESSORIES

Includes	
GS38 Compliant Test Leads	TL-102EU
Optional	
Carrying Case	C-90

Vol-Con® XL Voltage/Continuity Tester

Simple solenoid voltage tester that requires no batteries.

FEATURES

- Extremely rugged and reliable
- Vibrates when voltage is present
- Tests for AC/DC Voltage
- Audible continuity
- Audible voltage indication
- 6-600V AC/DC
- Replaceable leads with shielded probe tips
- Bright, long-life neon lamp
- Dual voltage indication for backup safety
- 2-year warranty

ACCESSORIES

Includes	
Standard Test Leads	TL-80
Optional	
Resistor-fused Leads*	TL-82
Padded Nylon Case	C-90
Leather Case	61-010

* Special, current-limiting resistor in each lead acts as a fuse to open in a short-circuit situation.

► 61-086

Vol-Con® XL Voltage/
Continuity Tester



VoltAware™ Non-Contact Voltage Tester

The VoltAware™ non-contact voltage tester quickly identifies live conductors, breaks in wires and the presence of AC voltage.

FEATURES

- Indicates presence of voltage from 40-1000VAC
- Visual indication of voltage
- Selectable audible indication of voltage
- Sleek, compact design
- Green LED indicates power on
- Low battery indicator
- Battery replacement (AAA size)
- 2-year warranty



Convenient button turns audible voltage indication on or off



► 61-025EU

Overmoulded cushion grip



3-Phase/Motor Rotation Testers

Instantly proves the correct connection of all 3 phases and shows the phase sequence through a series of LED's.

FEATURES

- Identifies three-phase sequence
- Indicates motor rotation
- Checks for open phases
- For use up to 600V
- Includes carrying case
- 2-year warranty



► 61-521



HeatSeeker™ Thermal Imager

Troubleshoot and identify potential problems before they happen with the IDEAL HeatSeeker™ Thermal Imager. What makes HeatSeeker so useful are the dual cursors that instantly locate the hottest and coldest temperatures on a live screen, and the camera's ability to overlay a thermal image on top of digital image for easy on-the-job decision making. The HeatSeeker™ Thermal Imager's easy set-up and operation make it a cost-effective tool for electrical service, industrial maintenance and building inspection.

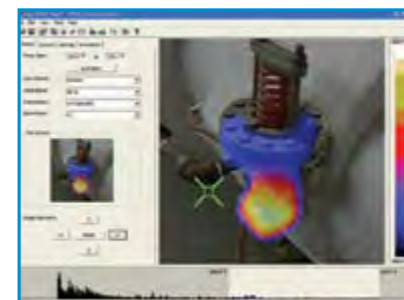


HeatSeeker

► 61-844EU

FEATURES

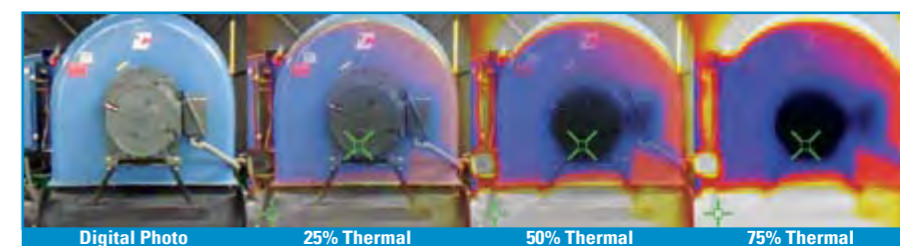
- Blended thermal/digital image
- Picture in picture
- Hottest/coldest temperatures displayed instantly on live screen
- Sequence image recording up to every hour
- Sequence image recording activated by alarm settings
- 2,209 temperature measurements live on camera screen
- Class II Laser
- Built-in LED illuminator
- High and low temperature alarms
- Mark images with text and voice annotation
- Measurement range of -10°C to 350°C
- Adjustable emissivity for maximum accuracy of reading in °C, whichever is greater
- Accuracy of +/- 2°C or ±2% of reading in °C, whichever is greater
- 6-hour battery life
- Tripod mountable
- Carrying case included
- ThermalVision PC software included
- 2-year warranty



ThermalVision™ PC Software Included
Easy-to-use software allows image download to PC for analysis.

Features

- View, edit and analyze images
- Automatic report generating capabilities
- Disk also includes user manual



Adjustable Blended View for Ease of Use

The HeatSeeker captures both a full infrared image and a digital photo. The thermal image can be overlaid on top of the digital image in various %blends for clarity.



Digital Light Meter

The Digital Light Meter from IDEAL simply and accurately measures light levels from fluorescent, metal halide, high-pressure sodium and incandescent light sources. The intuitive design is the perfect “must-have” instrument for basic lighting audits to address safety, productivity and energy efficiency needs.

FEATURES

- Measures in four ranges up to 20,000 FC or 200,000 Lux
- +/- 3% Basic Accuracy
- Cosine and color corrected measurements
- Large 3-1/2 Digit (2000 Count) LCD Display
- Over Range Indication
- Data Hold Mode
- Maximum Reading Mode
- Zero Adjustment
- Low Battery Indication
- Remote Sensor with 59" (1.5m) Cable

▶ 61-686



CE N12966

Infrared Thermometer

The IDEAL infrared thermometer is the non-contact way to make safe and quick temperature checks on mechanical equipment, electrical circuits and building systems while in operation. Regular monitoring of heat (infrared energy) emitted from surfaces can prevent potential problems and failures.

FEATURES

- Measurement range of -60 to 500° C
- Holds and displays the maximum temperature measured
- Single-spot laser sighting
- Distance to spot ratio of 12:1
- Maximum, Minimum, Difference (Δ) and Average temperature displays
- Lock mode for continuous measuring
- Programmable High Alarm and Low Alarm settings with audible warning
- Supports K-type thermocouple (61-461 not included)
- Adjustable emissivity
- Backlit display
- Carrying case included
- 2-year warranty

▶ 61-685



CE N12966

Accessories

▶ 61-184EU

Test lead kit for Digital Circuit Breaker Finder



▶ TMPC-255UK

UK Power Plug for SureTest® Installation Tester



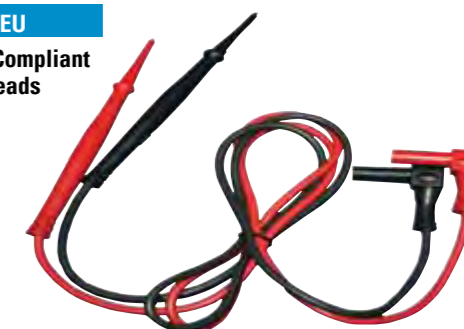
▶ TC-255

Test lead kit for SureTest® Installation Tester



▶ TL-102EU

GS38 Compliant Test Leads



▶ TL-104

Test Leads w/Large Alligator Clip



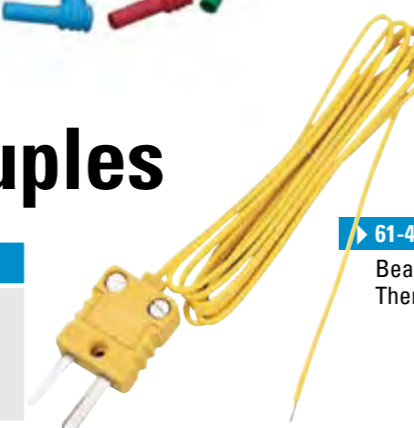
▶ PR-958UK

R1 + R2 Test Lead Adaptors



▶ 61-461

Beaded K-type Thermocouple



▶ 61-465

Thermocouple adaptor



Thermocouples

FEATURES

- Measure up to 816° C (1500° F)
- K-type thermocouple plugs into digital multimeter or clamp meter voltage ports with 61-465 adaptor

Fish Tapes

Tuff-Grip™ Pro...
Industry's Leading
Fish Tape!

Available in:
Blued Steel
Stainless Steel
Zoom™ Jacketed Stainless Steel
Gold-Fish® Brass Plated Steel Coil
S-Class® Nylon Jacketed
Fiberglass
Volt-Guard™ 1000V
Non-Conductive Fiberglass

Tuff-Cuff™ tape retaining feature keeps tape properly positioned in the opening.



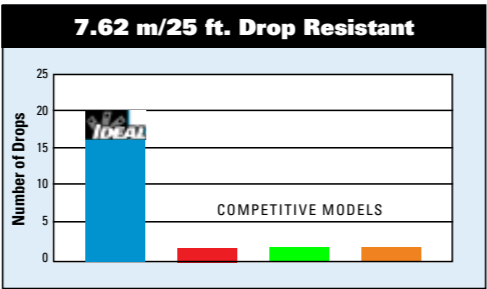
Tuff-Grip™ Handle
Large, comfortable ergonomically-designed, grasp from the top or side. Allows for use with gloves.

Full-perimeter handle band helps keep dirt and moisture out, prolonging life

Exceptionally Durable Case

Why IDEAL?

Tuff-Grip™ Pro
7.62 m/25 ft. Drop
Resistant Test



Drop Test

Fish tape samples were subjected to a 7.62m /25 ft. drop onto concrete. All samples were new and dropped side by side, under the same conditions, and at the same time. After each drop the samples were examined for structural damage.

Importance: Strong, durable, long lasting

Blued-Steel Tuff-Grip™ Pro Fish Tapes



► Tuff-Grip™ Pro Steel

FEATURES

- Unique finish is non-oily and resists rust
- Multiple options in width and length for ease of use
- Industry's straightest wire
- Stiffer for long runs
- Highest grade carbon steel
- Tensile strength 1,600 lbs.
- High column strength for longer runs
- Superior pull-out and rewind characteristics

Length m/ft.	Width & Thickness	Case Diameter	End Type	Tuff-Grip™ Pro
Blued Steel™				
18.29 / 60	0.060 cm x 0.32 cm (1/8 in. x .060 in.)	30.48 cm / 12 in.	Formed hook	31-055
36.58 / 120	0.060 cm x 0.32 cm 1/8 in. x .060 in.	30.48 cm / 12 in.	Formed hook	31-056
73.15 / 240	0.060 cm x 0.32 cm 1/8 in. x .060 in.	30.48 cm / 12 in.	Formed hook	31-057

22.86 cm / 9 in. diameter Tuff-Grip™ Pro Case

Volt-Guard™ Tuff-Grip™ Pro Fish Tapes

FEATURES

- Non-conductive up to 1000V
- Rectilinear profile for superior pushing power
- Designed for use around live circuits
- Superior pull-out and rewind characteristics

► Tuff-Grip™ Pro Volt-Guard™



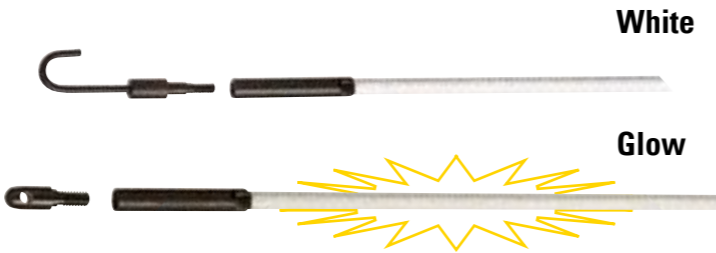
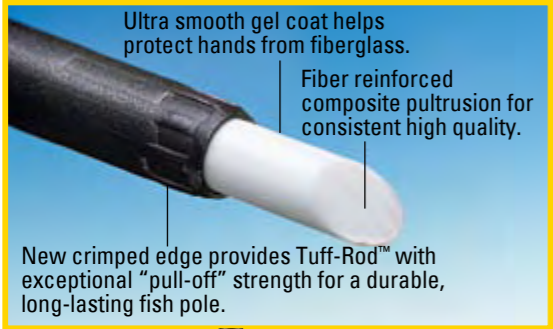
Length m/ft.	Width & Thickness	Case Diameter	End Type	Tuff-Grip™ Pro
Fibreglass				
18.29 / 60	0.48 cm x 0.24 cm (.1875 in. x .094 in.)	30.48 cm / 12 in.	Eyelet	31-542
36.58 / 120	0.48 cm x 0.24 cm (.1875 in. x .094 in.)	30.48 cm / 12 in.	Eyelet	31-544

For the full range of our Fish tapes, please visit: www.idealindustries.co.uk/fishtapes or contact Customer Services

Tuff-Rod™ Cable Pulling Rods

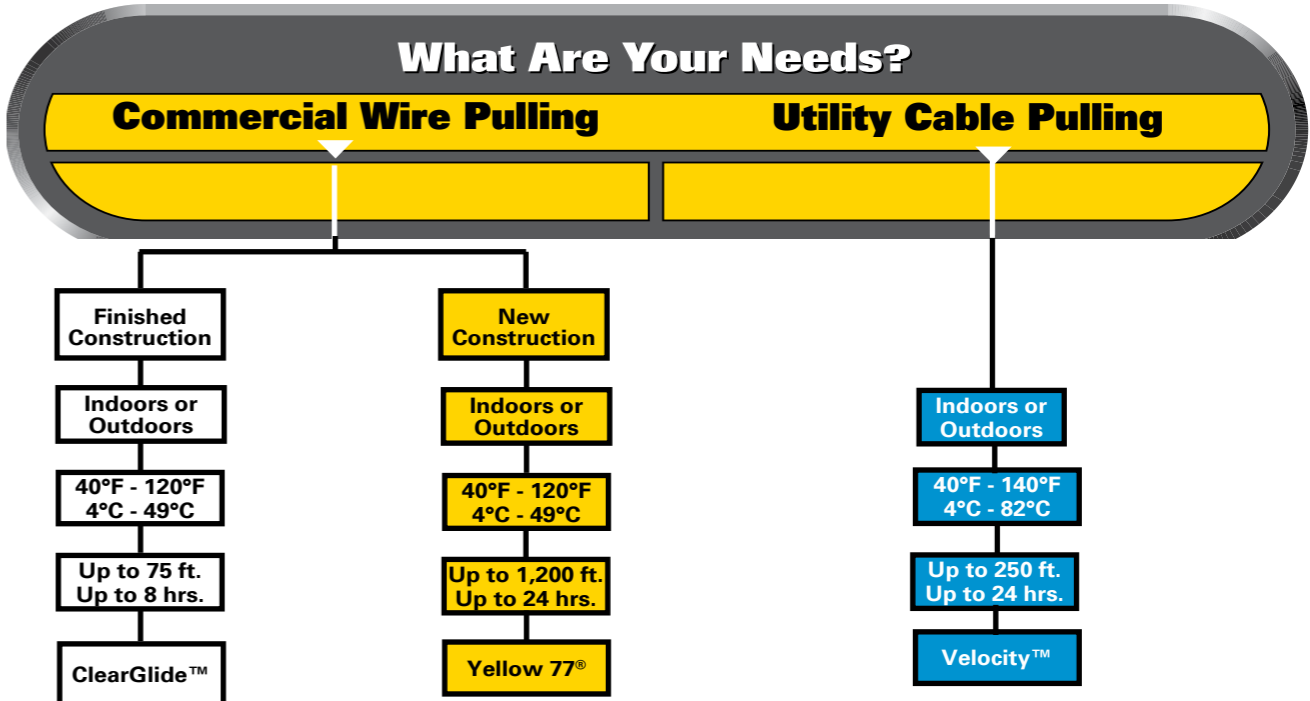
Designed to meet the needs of the electrical contractor and save valuable time during the installation of cable. Used to reach and push / pull wires & cables over suspended ceilings, in cable trays and through wall cavities. Ideal's Tuff-Rod™ fishing rods are extremely strong yet lightweight and flexible.

- FEATURES
- Use to reach and pull wires over suspended ceilings, in cable trays or through interior walls
 - Packaged in clear tubes for protection and long-term storage
 - Strong, lightweight & flexible fibreglass rods (6 mm/1/4 inch)
 - Extendable with additional rods & accessories
 - Ultra smooth gel coating helps protect hand from fibreglass
- ADDITIONAL EXTRA FLEX GLOW FEATURES
- As Regular Flex but 5 mm (3/16 inch) luminescent fibreglass rods
 - Glow-in-the-dark material for use in attics, basements and other dim lit areas



Catalogue Information	
Description - Regular Flex	Cat. No.
3.6m (12 ft.) kit with fixed bullet nose and threaded J hook (3 ea. 1.2m [4 ft.] sections)	31-611
7.32m (24 ft.) kit with fixed bullet nose and threaded bullet nose (4 ea. 1.83m [6 ft.] sections)	31-612
12 pack of 0.64 cm [1/4 in.] x 1.2m [4 ft.] Replacement Rods	31-643
12 pack of 0.64 cm [1/4 in.] x 1.83m [6 ft.] Replacement Rods	31-644
Description - Extra Flex Glow	
3.6 m (12 ft.) kit with fixed bullet nose and threaded J hook (3 ea. 1.2m [4 ft.] sections)	31-631
9.14m (30 ft.) kit with fixed bullet nose and threaded bullet nose (5 ea. 1.83m [6 ft.] sections)	31-633
12 pack of 0.48 cm (3/16 in.) x 1.2 m [4 ft.] Replacement Rods	31-647
12 pack of 0.48 cm (3/16 in.) x 1.83 m [6 ft.] Replacement Rods	31-648
Accessory Kits	
0.48 cm (3/16 in.)	31-651
0.64 cm (1/4 in.)	31-652
Repair Kits	
0.48 cm (3/16 in.)	31-641
0.64 cm (1/4 in.)	31-642

Wire Pulling Lubricants



Selection Guide

Selection Guide	ClearGlide™ Wire Pulling Lubricant	Yellow 77® Wire Pulling Lubricant	Velocity™ Wire Pulling Lubricant
Colour	Clear	Yellow	Cream
Base	Polymer	Wax	Polymer
Average Coefficient of Friction*	.17	.08	.14
Safe Storage	32°F – 180°F (0°C – 82°C)	32°F – 130°F (0°C – 54°C)	40°F – 140°F (4°C – 82°C)
Application Temperature Range	40°F – 100°F (4°C – 38°C)	40°F – 100°F (4°C – 38°C)	25°F – 140°F (-3.9°C – 60°C)
COMPATIBILITY (Cable Types):			
Rubber	•	•	•
Neoprene	•	•	•
Nylon	•	•	•
PVC	•	•	•
High-density or cross-linked polyethylene	•	•	•
Low-density polyethylene	•	•	•
Semiconducting jacket	•	•	•
Hypalon	•	•	•

*Results from Falex Corporation, an independent testing agency specializing in tribology tests, using the Falex-ISC On Disk Tribometer System machine with the ASTM G99 modified method.



For more information on our full range of cable lubricants, please contact Customer Service or visit: www.idealindustries.co.uk/lubricants

Wire Pulling Lubricants

Electricians have been known to use alternative solutions such as washing up liquid rather than products developed specifically as cable pulling lubricants. Independent lab tests have shown that detergents remain wet for longer periods within the conduit causing permanent damage to the cable insulation. This can lead to fire and safety risks. IDEAL's Yellow 77® is the number 1 brand of wire pulling lubricant since 1959 and is a perfect general purpose lubricant for pulling wire & cable. ClearGlide™ wire & cable pulling lubricant is a clear and colourless lubricant designed for quick and easy clean-up.

Yellow 77® Wire Pulling Lubricant

FEATURES

- Wax-based formula for superior lubricity
- Safe for use with most cable types except low-density polyethylene and semi-conducting jackets
- Clings to cable throughout long pulls
- Won't break down or separate after repeated exposure to freezing temperatures
- Dries to a thin, non-conductive film
- Easy to apply by hand or by brush
- Creamy texture applies easily and uniformly
- Homogeneous blend requires no mixing
- Won't dry out - surface coat forms to control evaporation
- Environmentally safe - non-toxic, non-flammable and non-corrosive

Catalogue Information

Description	Cat. No.
0.95 l (1-qt.) Squeeze Bottle	31-358
3.79 l (1-gal.) Bucket	31-351
18.93 l (5-gal.) Bucket	31-355

► Yellow 77®



ClearGlide™ Cable Pulling Lubricant

► ClearGlide™



FEATURES

- Exceptional lubricity for super-fast pulls
- Polymer-based formula perfect for all electrical and datacomm applications
- Safe to use with all cable types
- Controlled evaporation rate is ideal for shorter runs
- Remains stable over wide temperature range - usable from 30°F to 180°F (-1°C to 82°C)
- Dries to a semi-fluid film that won't clog conduit
- Easy to apply by hand, brush or pump
- Environmentally safe - non-toxic, non-flammable and non-corrosive

Catalogue Information

Description	Cat. No.
0.95 l (1-qt.) Squeeze Bottle	31-388
3.79 l (1-gal.) Bucket	31-381
18.93 l (5-gal.) Bucket	31-385

T®-Stripper Wire Strippers

IDEAL's T®-Strippers have been the industry standard for almost 50 years. Designed for stripping, holding and twisting wires, T®-Strippers are lightweight and easy to use.



► 45-120-341

FEATURES

- Form-ground, knife-type blades for accurate, easy stripping without nicking insulation
- Built-in wire cutter and looping holes
- Convenient plier nose for extra gripping strength
- Laser-etched wire gauge for easy-to-read visibility
- Spring-loaded automatic opening
- Corrosion-resistant, black oxide finish
- Tough steel construction

Reflex™ Premium T®-Stripper

FEATURES

- Curved handles reduce wrist fatigue
- Sleeves that extend to stripping head to cushion thumb and fingers
- Textured, no-slip sleeves provide a sure, easy grip

► 45-425-341



Kinetic™ Reflex™ T®-Stripper



► 45-915

FEATURES

- Non-slip Santoprene™ textured grips
- Plier nose for holding and twisting wires
- Slide lock for safety and storage
- Thumb and finger valley makes stripping easier and more accurate
- Ergonomic design for maximum comfort
- "Shear-Cut™" bolt cutters

Catalogue Information

Description	Solid	Stranded	Cat. No.
T®-Stripper Wire Stripper-Metric	0.75-6mm²		45-120-341
T®-Stripper Wire Stripper-Metric	0.5-4mm²		45-125-341
Reflex™ Premium T®-Stripper-Metric	0.5-4mm²		45-425-341
Kinetic™ Reflex™ T®-Stripper	1.0 mm²-4.00 mm²	2.5 mm²-0.5mm²	45-915
Kinetic™ Reflex™ T®-Stripper	10.0 mm²-2.5 mm²	1.0 mm²-0.5 mm²	45-918

Kinetic™ Super Wire Stripper

FEATURES

- Non-slip Santoprene™ textured grips
- Plier nose for holding and twisting wires
- Slide lock for safety and storage
- Thumb and finger valley makes stripping easier and more accurate
- "Shear-Cut™" bolt cutters

Catalogue Information

Description	Solid	Stranded	Cat. No.
Kinetic Super™ Wire Stripper	1.0 mm²-4.00 mm²	2.5 mm²-0.5 mm²	45-715
Kinetic Super™ Wire Stripper	1.5 mm²-0.5 mm²	1.0 mm²-0.5 mm²	45-716



► 45-715

7-in1 Stripper



► 45-777

FEATURES

- Versatile, seven-function tool features precision-ground stripping blades, cushioned grips and plier nose
- Strips 6.0 mm²-1.5 mm² solid and 4.0 mm²-0.5 mm² stranded wire
- Crimps bare and insulated terminals for 5.0-0.5 mm² wire, RG-59 coax connectors and 7 to 8mm auto ignition connectors
- Cuts unhardened wire, bolts and screws and reforms threads
- Reams and de-burrs conduit
- Gauges and loops wire

Twin & Earth Cable Stripper

FEATURES

- Self-adjusting stripping blades automatically select proper position
- Strips Twin and Earth cable
- Open-throat construction allows unlimited strip length
- Neatly removes outer cable sheath and then inner wire sheathing to desired lengths
- Lightweight, ergonomic design reduces user fatigue



► 45-235

PowerBlade™ Cable Cutter

► 35-078

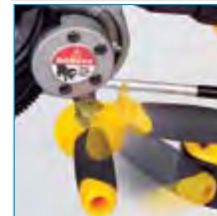


(Drill not included)

FEATURES

- Extremely versatile: fits almost any drill (12V minimum)
- Cuts up to 380 mm² (750 MCM) hard-drawn copper, 507 mm² (1000 MCM) aluminum*
- Heavy-duty gears and specially hardened blades for professional quality
- Rounded blade design minimizes cable distortion during cutting
- No need to mess with battery packs or special chargers; this tool works with the drill you already carry!

*Max. Jaw Opening - 5 cm / 2 in. Not for cutting steel or ASCR.



(Folding handle for storage.)

FEATURES

- 380 mm² (750 KCMIL) Ratcheting Cable Cutter is designed to cut 380 mm² (750 KCMIL) (MCM) and smaller hard-drawn copper and aluminum cables
- Hardened steel blades ensure consistent cuts and long-term durability
- Rounded blade design minimizes cable distortion during cutting
- Quick release mechanism simplifies blade back-out
- Locking mechanism keeps handles closed for easy storage
- Moulded-in foot provides stability and leverage when making multiple cuts

*Max. Jaw Opening - 5 cm / 2 in. Not for cutting steel or ASCR.

Ratcheting Cable Cutter

► 35-053



► 35-033

Catalogue Information

Description	Length	Cat. No.
120 mm² (250 MCM) Long-Arm Cable Cutter	35cm/14"	35-031
240 mm² (500 MCM) Long-Arm Cable Cutter	55cm/22"	35-032
500mm² (1000 MCM) Long-Arm Cable Cutter	81cm/32"	35-033

CAUTION: Comfort-grip handles are not designed to for protection against electrical shock. Do not use on live circuits.

Long-Arm Cable Cutter

FEATURES

- High strength forged blades for ultimate durability
- Precision-ground jaws make clean cuts with minimal cable distortion
- Replaceable blades
- For copper and aluminum only. Not designed for steel or ACSR

Large Mouth Bags

- FEATURES
- Top opens completely for easy access to large tools - reinforced to hold itself open
 - Measures 22.86 cm wide x 30.48 cm deep (9 in. x 12 in.) with outside and inside pockets for convenient hand tool storage
 - Rugged zipper closure helps prevent tool loss
 - Removable shoulder strap
 - Durable multi-ply construction



Catalogue Information	
Description	Cat. No.
Large Mouth Bag - 33 cm / 13 in. long	35-410
Large Mouth Bag - 40 cm / 16 in. long	35-418
Large Mouth Bag - 45 cm / 18 in. long	35-427

Journeyman Electrician's Tote™



- FEATURES
- Compact and versatile design
 - Carry as a hand-tote, shoulder-tote or tool-belt
 - Includes removable shoulder strap and belt
 - Durable multi-ply construction

▶ 35-462

Electrician's Tool Pouch

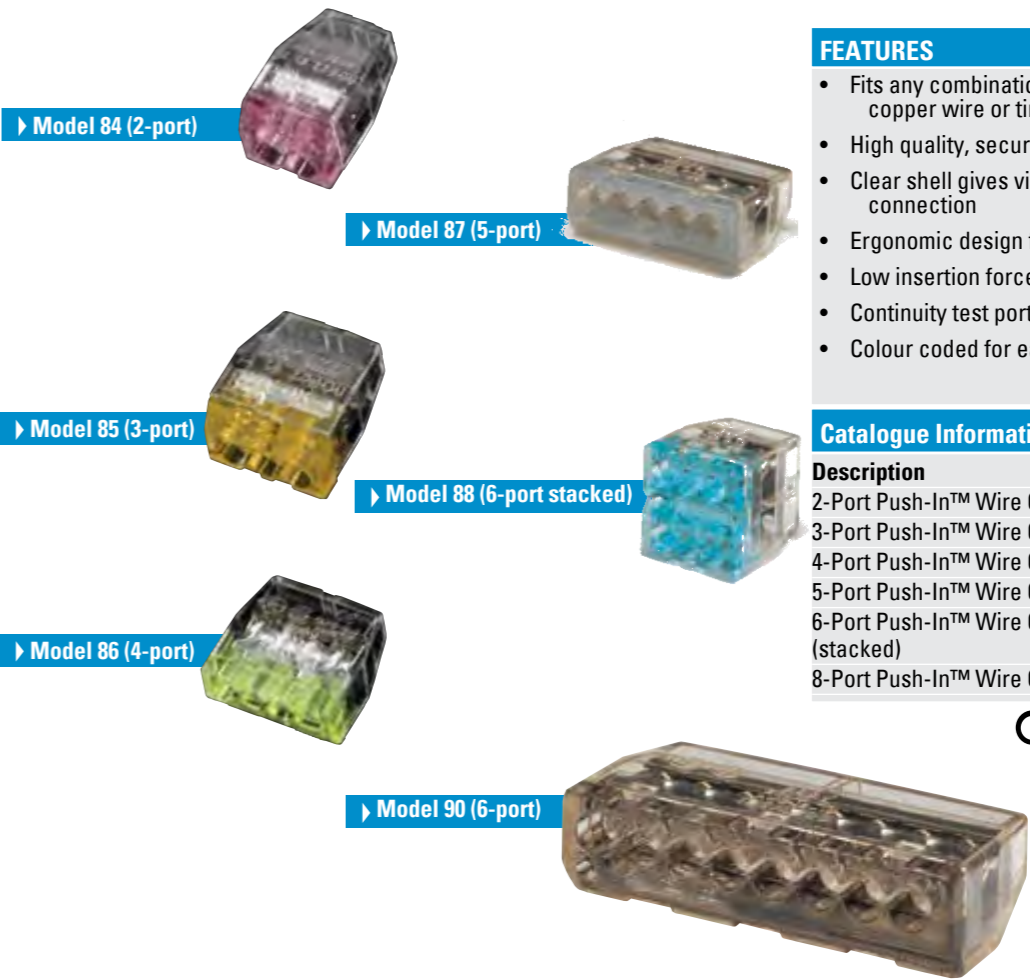
- FEATURES
- Quality leather
 - Seven-pocket tool pouch
 - Full length belt tunnel
 - Chain tape lanyard

▶ 10-466



In-Sure™ Push-In Wire Connectors

IDEAL's In-Sure™ Push-In connectors are available as 2, 3, 4, 5, 6 & 8 port connectors. They are simple to use and are designed to reduce wiring time by up to 50%.



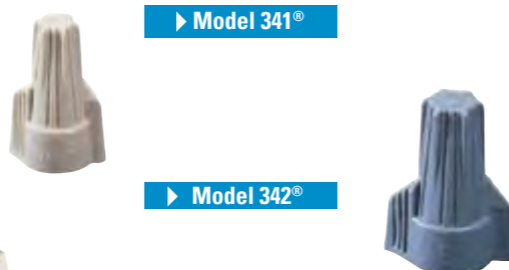
- FEATURES
- Fits any combination of 0.75mm² -2.5mm² solid copper wire or tin bonded stranded wire
 - High quality, secure connections
 - Clear shell gives visual verification of connection
 - Ergonomic design for easy grip and comfort
 - Low insertion force for fast connections
 - Continuity test port
 - Colour coded for easy identification

Catalogue Information		
Description	Qty.	Cat. No.
2-Port Push-In™ Wire Connector	100	30-084
3-Port Push-In™ Wire Connector	100	30-085
4-Port Push-In™ Wire Connector	100	30-086
5-Port Push-In™ Wire Connector	50	30-087
6-Port Push-In™ Wire Connector (stacked)	50	30-088
8-Port Push-In™ Wire Connector	50	30-090



Twister® Wire Connectors

Just two models accommodate the majority of common wiring configurations from 0.5 mm² to 10.0 mm². The ribbed cap provides a secure grip and swept wings offer extra leverage. A patented square-wire spring provides safe, secure connections.

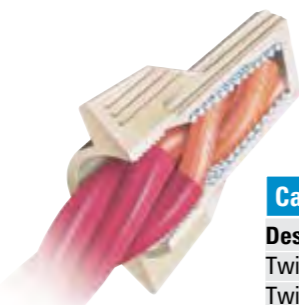


► Model 341®

► Model 342®

FEATURES

- Exceptional wire-range capacity - two models handle wire combinations from as small as 0.5 mm² to as large as 10.0 mm²
- Ribbed cap provides a secure grip and fast fingertip starts
- Swept wings offer extra leverage and less effort for large wire combinations
- Hexagonal shape accommodates standard nutdriver for tool installation
- Live-action, square-wire spring locks onto wire for safe, secure connections
- Deep skirt helps protect against flash-over and turned-back strands for maximum dielectric protection
- Tough, UL 94V-2 flame-retardant shell rated at 105 C (221 F)
- UL Listed to 486C and CSA Certified to C22.2 #188; comply with Federal Specification W-S-610E
- Classified in accordance with IEC Publications 998-2 and 998-2-4



Catalogue Information

Description	Qty.	Cat. No.
Twister Wire Connector - box of 100	100	30-341
Twister Wire Connector - box of 50	50	30-342

Model	Colour	Wire Combination Range mm
341	Tan	600V* 0.75mm ² to 10.0mm ² Min. 3 0.5mm ² Max. 3 4.0mm ²
342	Grey	600V* 0.5mm ² to 10.0mm ² Min. 3 2.5mm ² Max. 3 6.0mm ² /w2 2.5mm ²

*1000V maximum in fixtures and signs



Twister® PRO Wire Connectors

Twister® PRO combines innovative SureGrip™ technology with a unique swept-wing connector design, resulting in the most comfortable wire connector ever. It's the perfect combination of comfort and performance that will make this the connector of choice for professional electricians.

► Model 344®



FEATURES

- SureGrip™ overmoulding provides better grip for improved leverage and more torque
- Comfortable swept wings designed to help reduce hand fatigue
- Expanding square-wire spring provides a secure connection every time
- Better grip and more leverage for faster connections with less effort

Catalogue Information

Description	Qty	Cat. No.
Twister Pro Wire Connector	jar of 250	30-244J
Twister Pro Wire Connector	jar of 500	30-644J

Model	Colour	Wire Combination Range mm
344	Red/Yellow	600V* 0.5mm ² to 8.0mm ² Min. 2 1.0mm ² Max. 3 6.0mm ²

*1000V maximum in fixtures and signs

WeatherProof™ Wire Connectors

The WeatherProof line offers excellent protection from the elements and is suitable for above ground interior and exterior electrical connections exposed to rain or damp/wet conditions.



FEATURES

- Silicone-based sealant protects against moisture and corrosion
- UL listed to 486D for use in damp/wet locations or direct burial applications
- Complete line handles wire sizes from 0.5 mm² to 10.0 mm² copper conductors

Catalogue Information

Description	Qty	Cat. No.
WeatherProof Wire Connectors	Card of 25	30-161
WeatherProof Wire Connectors	Card of 20	30-162
WeatherProof Wire Connectors	Card of 15	30-163
WeatherProof Wire Connectors	Box of 100	30-261
WeatherProof Wire Connectors	Box of 100	30-262
WeatherProof Wire Connectors	Box of 100	30-263

► Model 61



► Model 62



► Model 63



WeatherProof™ Applications

- exterior area and security lighting
- outdoor power outlets
- decorative patio & deck lighting
- marine shore-power and dock lighting
- traffic-signal control circuits
- outdoor signage
- basement, garage, and car-port circuits
- bathroom/spa vent fans
- automatic carwashes
- industrial hosedown/washdown

Model	Colour	Wire Range mm	Wire Combination Range
61	Blue/Orange	450VAC* / 24 Amps 0.5mm ² to 2.5mm ²	Min. 2 * 0.5mm ² Max. 2 * 2.5mm ²
62	Blue/Red	450VAC* / 32 Amps 1mm ² to 6mm ²	Min. 2 * 1.0mm ² Max. 5 * 2.5mm ²
63	Blue/Dark Blue	450VAC* / 32 Amps 1.5mm ² -10mm ²	Min. 3 * 2.5mm ² Max. 6 * 4.0mm ²

*1000V maximum in fixtures and signs



Lockout/Tagout Kits

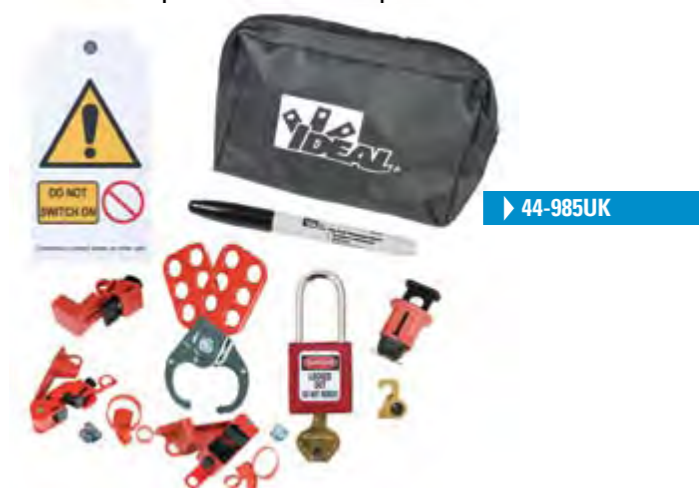
Many accidents are caused by the unexpected energisation of circuits, machinery and equipment. Such accidents can be prevented by implementing proper Lockout / Tagout procedures. IDEAL Lockout / Tagout devices help to achieve compliance with current safety regulations.

FEATURES

- Suitable for use on a broad range of circuit breakers
- Easy to install and use
- Robust and durable
- Xenoy high security padlock

UK Contractor LOTO Kit

Contains a broad range of devices allowing you to lock off most breakers on the market. Comes in a handy pouch that keeps your kit close to hand and easily accessible.



▶ 44-985UK

UK Domestic Installer LOTO Kit

Contains devices to use on the typical breakers found in domestic installations. This kit also comes in a handy pouch.

▶ 44-924



Personal LOTO Kit

This kit contains two of our most popular devices and is aimed at companies wishing to kit out their entire workforce with lock-off devices.

▶ 44-925



Kit content

	IA-3240	K-8334	KB-0224	KB-0225	KB-0374	KB-0234	K-7566	444.001	IA-2280	KB-0228*
44-985UK	•	•	•		•	•	•	•	•	•(8)
44-924	•	•	•	•		•	•			•(4)
44-925		•		•		•				•(1)

*Only available in packs of 10 (KB-0235).

LanTEK® II LAN Cable Certifiers

Superior performance, revolutionary fibre options and outstanding value makes LanTEK® II the ultimate cable certification platform. Choose from three models that provide the test capabilities you need today with cost-effective upgrades should these change tomorrow. With frequency ranges of 350MHz, 500MHz and 1GHz there is a model available for ISO Class D/CAT 5e through to ISO Class FA/CAT 7A certification.



FEATURES

- High speed testing - 11 seconds for Class D/CAT 5e
- Patented test method eliminates the need for expensive permanent link adaptors
- Test and certify with off-the-shelf patch cords
- DualMODE function allows certification to two different standards with one press of the Autotest button
- Internal memory stores 1,700 ISO Class E tests with full colour graphs
- Smart Lithium-Ion batteries offer up to 18 hours field use
- USB 2.0 port for fast data download
- Digital Talkset works over copper and fibre
- 11 cm widescreen display gives superb 160° viewing angle
- Maximum reporting power with IDEAL DataCENTER (IDC) software
- Optional Alien Crosstalk Kit for 10GBASE-T applications
- Accuracy independently verified by ETL

◀ 33-991



Catalogue Information

Description	Cat. No.
LanTEK II-350: TIA/EIA Cat. 6, ISO Class E certifier	33-991
LanTEK II-500: TIA/EIA Cat. 6A, ISO Class EA certifier	33-992
LanTEK II-1000: TIA/EIA Cat. 7A, ISO Class F/FA certifier	33-993
Supplied: LanTEK® II Display and Remote Handset, two lithiumion batteries, two 110/240V power adaptors with US/EU/UK plugs, lockable semi-rigid carrying case, two CAT 6A reference patch cords, USB cable, IDEAL DataCENTER data management and reporting software, two headsets, hanging straps, calibration and ETL accuracy certificate, quick reference guide, user manual on CD.	



Intuitive icon driven operation

FiberTEK® FDX

These optional modules plug directly into any LanTEK® II certifier, allowing fast certification of fibre optic links to TSB Tier 1 standards. FiberTEK® FDX revolutionises the whole fibre certification process by utilising a sophisticated full duplex optical module that allows each fibre to be certified in one go with no reversing of patch cords or swapping of optical modules. Four attenuation measurements plus length are obtained with one press of the Autotest button.

FEATURES

- Fibre Optic certification to TSB Tier 1 standards using the LanTEK® II cable certifier platform
- Full Duplex capability - four insertion loss tests and length measurement in one step
- Real-time power meter to aid in troubleshooting active equipment
- Multimode (850/1300nm) kits available with either LED light sources for 10/100Mbps certification or VCSEL/laser sources for 1Gbps. Single mode 1310/1550nm kits also available
- Combination multimode and singlemode kits available
- Field changeable adapters - SC, ST, FC
- Documentation and report generation using IDEAL DataCENTER (IDC) software

Catalogue Information

Description	Cat. No.
Multimode (850/1300nm) kit with LED light sources	33-990-FA01
Multimode (850/1300nm) kit with VCSEL/laser light sources	33-990-FA02
Single mode (1310/1550nm) kit with laser light sources	33-990-FA03
Combination MM/SM kit (33-990-FA01 & 33-990-FA03)	33-990-FA04
Combination MM/SM kit (33-990-FA02 & 33-990-FA03)	33-990-FA05

Supplied: Two FiberTEK® FDX modules, semi-rigid carrying case, SC, FC, ST adapters for modules (2 ea), SC-SC patch cords (MM kits: 3 x 62.5µm, 3 x 50 µm; SM kits: 3 x 9 µm SMF) compliant to ISO/IEC 14763-3 standard, quick reference guide, user manual on CD.



► LanTEK®/FiberTEK™

Fibre Inspection Microscope

► 45-332



Catalogue Information	
Description	Cat. No.
Fibre Inspection Microscope	45-332
1.25 mm Connector Adaptor	45-334
MTRJ-Style Connector Adaptor	45-335
200X Conversion Eyepiece for Singlemode Connectors	45-336

FEATURES

- 100X magnification for viewing multimode connectors
- Includes 2.5mm connector “Universal Adapter” for FC, ST® and SC style connectors
- Oblique illumination provides excellent view of ferrule cleanliness and core condition
- Rugged, rubberized metal housing, precision glass optics and a built-in laser safety filter
- White LED illumination delivers 100,000 hours bulb life
- Soft padded carrying case included
- Battery life 48+ hours
- Compact size 19 cm x 5 cm x 3 cm (7.5” x 1.96” x 1.18”)
- Optional 200X Conversion Eyepiece threads on for viewing finish/polish of singlemode connectors

FiberMASTER™ Fibre Optic Testers

The IDEAL FiberMASTER™ allows the user to measure absolute power and calculate the insertion loss of fibre optic links at several wavelengths. Measure fibre optic power in microwatts (µW), milliwatts (mW) and decibel-milliwatts (dBm) to test and troubleshoot active Local Area Networks. Plus the 1490nm wavelength measurement mode is perfect for troubleshooting emerging Fibre to the Home cabling systems.



► 33-931



FEATURES

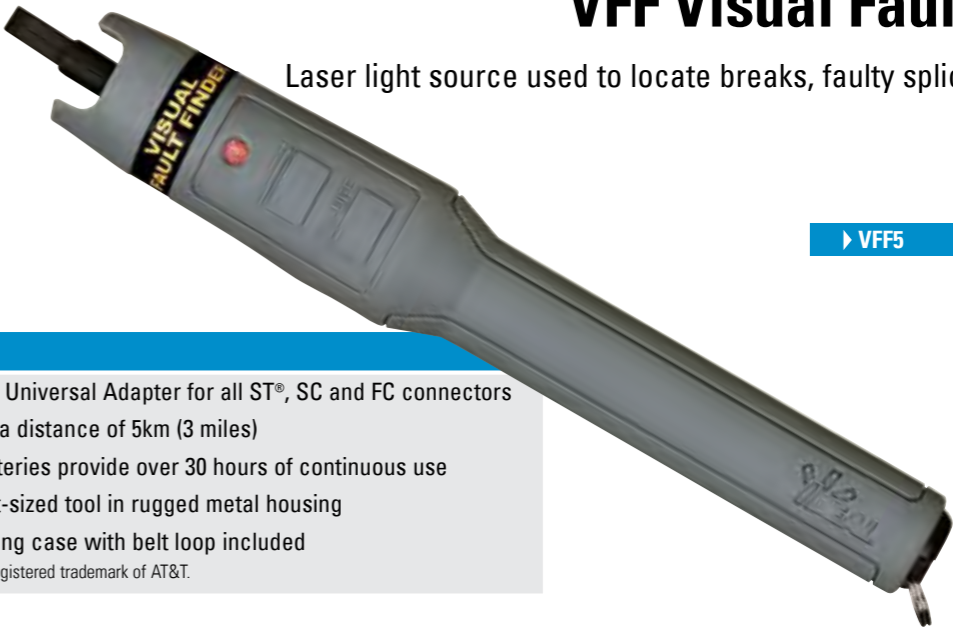
- 850, 1300, 1310, 1490 and 1550nm wavelength measurement capability on power meter
- 850, 1300, 1310, 1550nm laser light source (33-931 kit)
- 850nm light source (33-928 kit)
- Power measurement in dBm and µW, loss display in dB
- Includes universal adaptor for power meter and ST, SC and FC adaptors for light source
- Unique “docking” light source and easy three button operation make it the perfect fibre tester for use in the field

Catalogue Information	
Description	Cat. No.
FiberMASTER™ MM/SM power meter (w/ 850nm light source)	33-928
FiberMASTER™ MM/SM Fibre Optic Test Kit	33-931

VFF Visual Fault Finder

Laser light source used to locate breaks, faulty splices and crimps.

► VFF5



FEATURES

- NEW** 2.5mm Universal Adapter for all ST®, SC and FC connectors
- Useful over a distance of 5km (3 miles)
- Two AA batteries provide over 30 hours of continuous use
- Slim, pocket-sized tool in rugged metal housing
- Nylon carrying case with belt loop included

Note: ST® is a registered trademark of AT&T.

SIGNALTEK™ & SIGNALTEK™ FO Multimedia Qualifications Testers

SIGNALTEK™ provides a technically innovative method for checking a networks ability to support voice, data, video, and VoIP applications. It tests the link by transmitting Ethernet packets on the wire and measuring the link performance according to the IEEE 802.3ab Gigabit Ethernet standard. By monitoring transmitted and received data packets, it can report the BERT (Bit Error Rate Test) for the link.



FEATURES

- Simulate real world network traffic with full-duplex gigabit performance over twisted pair cabling
- Gigabit performance qualification to IEEE 802.3 standards
- Selectable 10/100/1000 Bit Error Rate Testing to ensure performance for all Ethernet devices
- Data monitoring to detect intermittent network problems
- Network interrogation with link establishment, port LED blink and ping
- Wiremap fault detection
- Internal and USB Data Storage - 20,000+ tests internally or unlimited on USB Device
- Prints Easy-to-Read Pass/Fail Qualification Reports

ADDITIONAL FO FEATURES

- Qualify copper and fibre optic cabling to IEEE 802.3 standards
- Qualify short and long range cabling to a distance of up to 10km (Multimode and Single Mode capability)
- Perform Bit Error Rate Testing (BERT) and decibel (dB) loss measurements on optical links
- 850nm and 1300 nm wavelengths available to support virtually all LAN and campus fibre applications
- Small Form factor Pluggable (SFP) modules are compact, light-weight, and field changeable
- Store and print Qualification reports for copper and fibre jobs using internal memory or USB drives

SIGNALTEK™- FO offers all the capabilities of the standard SIGNALTEK™ and adds the powerful capability of fibre optic qualification. Traditional power meter/light source kits only measure the attenuation of fibre optic links. As Gigabit Ethernet is becoming the standard for backbone and zone fibre optic cabling, attenuation tests alone may not be enough to guarantee error-free performance. SIGNALTEK™- FO performs full Gigabit Qualification on both copper and fibre links for less than the price of an Optical Test Set alone.

Catalogue Information

Description	Cat. No.
SIGNALTEK™ Kit (Copper only)	33-975
SIGNALTEK™-FO w/850nm Modules	33-984
SIGNALTEK™-FO w/13X0nm Modules	33-985
SIGNALTEK™-FO w/850nm & 13X0nm Modules	33-986
SIGNALTEK™-FO w/o Modules (Fibre-Ready)	33-988



VDV PRO Cable Tester

The VDV PRO Cable Tester is an easy-to-use cable testing and verification device that can quickly test all wiring requirements found throughout today's residential and commercial environments. This model can also measure cable length.

◀ 33-770

FEATURES

- VDV PRO supports RJ-11/12, RJ-45, Coax F, BNC and RCA connectors
- Wide, bright backlit screen
- Easy-to-read Pass/Fail results
- Displays wire errors including: Open, Short, Miswire and Split Pair
- Measure cable length in feet or meters
- Multi-tone generator for cable tracing and fault isolation
- Blink network link LED for visual cable tracing

IENet™ PRO Cable Tester

IENet™ PRO is designed specifically to test Industrial Ethernet cabling and features a unique easy-to-use cable test for 2 pair and 4 pair Industrial Ethernet cabling. With shielded 2 pair, M12 and RJ-45 ports, the IENet™ PRO is compatible with most Industrial Ethernet cabling. Test results are displayed in the PROFINET® Industrial Ethernet format.

FEATURES

- IENet™ PRO supports RJ-45 and M12 connection
- Simple selection between Voice, 2 and 4 pair Data, and Coax testing functions (Voice and Video/Security tests via optional adaptors)
- Tests for opens, shorts, miswires, reversals, split pair and length
- Indicates correct wiremap to T568A/B standards for shielded and unshielded cabling
- Identifies presence of voltages on cables
- Multi-tone generator
- Integrated remote unit to make storage and carrying easier
- Network LED blink for visual cable tracing
- Numerical indication for UTP "No Shield" and STP - "Shield" to comply

◀ 33-771



VDV Multimedia Cable Tester

Easy-to-use cable tester for installers working with voice, data and video. One tester for all applications!

FEATURES

- Checks for shorts, miswires, reversals and split pairs
- Comprehensive testing for Voice, Data and Video applications.
- Designed for testing in residential and commercial environments.
- Supports RJ11/12, RJ45, and coax F-Connector cabling and interfaces.
- Easy-to-read LCD display with PASS/FAIL indicators, wiremap display and troubleshooting modes.
- Multi-tone generation for cable tracing and fault isolation.
- Convenient internal storage for remote

▶ 33-856



LinkMaster™ Tester

Tests wiring configurations on unshielded and shielded twisted pair cables.



◀ 62-200

FEATURES

- Checks for shorts, miswires, reversals and split pairs
- Debug feature, automatic shut-off and low battery LED indication
- Main unit and remote allow one person testing

540DK Tone Generator & Amplifier Probe

FEATURES

- Tracing and continuity checking of telecom and datacom cables
- Ergonomic design aids grip and durability
- Probe's unique rubber tip won't break or crack
- LED lamp provides visual indication of correct wire
- External terminals for butt-set connection
- Volume adjustment knob
- Batteries included

▶ 540DK



SecuriTEST™ PRO

CCTV installers often need to carry a variety of testing tools to complete their work. SecuriTEST™ PRO combines the most-needed tools in one easy-to-carry package. Since all connections (video/communications/DMM) attach to a single unit, SecuriTEST™ PRO eliminates the need to juggle several devices while on a ladder or lift, making working conditions safer and increasing productivity.

SecuriTEST™ PRO includes IRE testing (video and sync levels), audio level testing, a high-capacity lithium ion battery in a package that's small and light.

The SecuriTEST™ PRO has all the features and functionality that CCTV technicians need to install, test and maintain analogue security camera systems. SecuriTEST™ PRO also includes a custom carrying case.



▶ 33-892

FEATURES

- IRE video level and sync tests
- Sound level test through integrated speaker and on screen level indicator
- Seven Essential CCTV Tools – Combines a CCTV video tester, PTZ camera controller, Digital Multi-Meter, UTP cable tester, video test pattern generator, PTZ protocol analyser and camera programmer in a single compact package.
- Save Time & Money – Test, aim, focus and program cameras when working alone. Save time by not having to walk back to the control centre to verify functionality of each camera.
- Compact Design – Combines all the most needed security tools in a lightweight, easy-to-carry unit. Sharp, bright 2.5in (6.3cm) colour LCD screen with on-screen displays for PTZ control/diagnostics and DMM readouts.
- PTZ Protocol Analyser - Compatible with 20+ PTZ protocols to test and program cameras in the field. Decodes and identifies output from PTZ console to aid in troubleshooting.
- High capacity lithium ion battery
- Carrying case included

Catalogue Information	
Description	Cat. No.
SecuriTEST™ PRO CCTV/Security Tester only	33-892
SecuriTEST™ Tester Pouch only	62-891



Carrying Case (62-891)



Punch down Tool



▶ 35-482

- FEATURES**
- Insertion Tool for Krone Blocks
 - For seating telecom and data cables into terminals

Telemaster™ Telephone Tools



▶ 30-496

- FEATURES**
- For paired conductors
 - Multi-function telephone tool cuts, strips and crimps for easy one-tool application
 - Steel frame for long-term durability. (Crimps primary modular plug strain relief only)

Ratchet Telemaster™

- FEATURES**
- For paired conductors
 - Ratchet version of popular Telemaster™ Tool for RJ-45 and RJ-11 modular plugs
 - Repeatable crimp action for consistent, high quality connections



▶ 30-696

UTP/STP/Coaxial Cable Strippers



▲ 45-162-341

▲ 45-163-341

▲ 45-165-341

Catalogue Information		
Description	Typical RG Cables	Cat. No.
Up to 1/8 in. (3.2mm) O.D.	RG-174, RG-187	45-162-341
1/8 in. (3.2mm) to 7/32 in. (5.556mm) O.D.	RG-58, CB, Mini Coax	45-163-341
1/4 in. (6.4mm) to 9/16 in. (14.3mm) O.D.	RG-11, RG-8	45-164-341
3/16 in. (4.8mm) to 5/16 in. (8mm) O.D.	RG-59, UTP Cable	45-165-341

Data T®-Cutter



▶ 45-074

- FEATURES**
- Cuts round communication cable and maintains cable geometry for better cable performance
 - Cuts multi-pair cable up to .500 in. (12.7mm) and coaxial cable up to RG-9/U
 - Suitable for soft cables (not ACSR)
 - Steel reinforced centre conductors can be trimmed with bolt cutting holes
 - Locking latch keeps tool closed in pouch
 - Data T®-Cutter II designed for RG-59 and RG-6 coaxial cable

Multi-Strip Coax/UTP Cable Stripper

FEATURES

- Strips UTP, RG-59 and RG-6 coax cable
- Provides a 0.64 cm / 1/4" (minimum) x 0.64 cm / 1/4" strip on coax
- Spare cartridge compartment provided
- Push-on ring for easy connector termination

▶ 45-603



Coax Cable Stripper

FEATURES

- For RG-6, RG6 Quad and RG-59
- No adjustment required
- Strips centre conductor and cable jacket

▶ 45-320

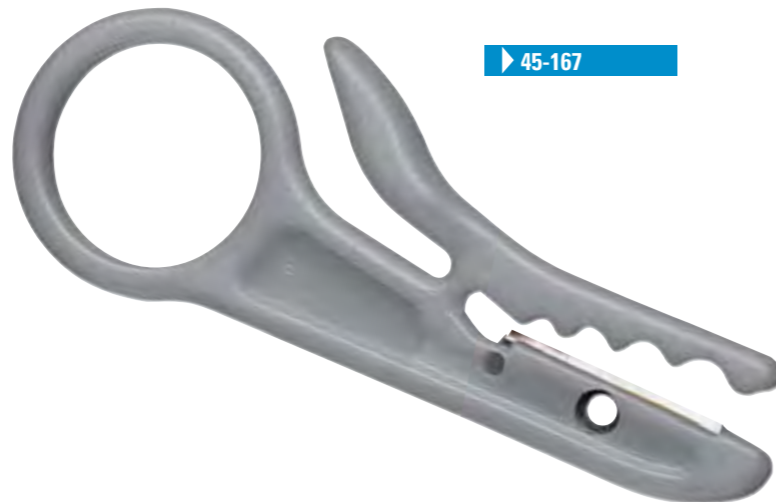


UTP Cable Stripper

FEATURES

- Strips Cat 3, 5, 5e & 6 cables
- One-step stripping
- Very low cost

▶ 45-167



For more information about
IDEAL INDUSTRIES in Europe:

IDEAL INDUSTRIES NETWORKS DIVISION

Unit 3, Europa Court, Europa Boulevard, Westbrook,
Warrington, Cheshire, WA5 7TN, United Kingdom
Tel: +44 (0)1925 444446
Fax: +44 (0)1925 445501
Email: uksales@idealnwd.com
www.idealindustries.co.uk

IDEAL INDUSTRIES GmbH

Gutenbergstrasse 10
D - 85737 Ismaning, Germany
Tel: +49 (0) 89 99686 0
Fax: +49 (0) 89 99686 111
email: germanysales@idealnwd.com
www.idealindustries.de

IDEAL INDUSTRIES SAS

Route de Gisy, ZA Burospace - Bât 7,
F - 91571 BIEVRES CEDEX, France
Tel: +33 (0)1 69 35 54 70
Fax: +33 (0)1 60 19 00 48
Email: francesales@idealnwd.com
www.idealindustries.fr



All specifications are subject to change without notice.
No liability will be accepted for errors and omissions.