

2015

Dentallog

Equipment Supplement



36

Miele
PROFESSIONAL

G 7881 DENTAL THERMAL
DISINFECTOR

A Simple Solution with Powerful Results

888.395.1341 • darby.com/equipment



DARBY DENTAL SUPPLY, LLC



LED Curing Light



encompass



Cavitron Touch



MASTERtorque



DARBY DENTAL SUPPLY, LLC

We value your business and would like to extend a \$10,000 line of credit for your year-end capital equipment purchases. Now is the right time to go through your Darby Equipment Supplement and take advantage of this great opportunity. You can fulfill your equipment needs and deduct a substantial amount of its value in accordance with IRS Section 179. This will allow you to start enjoying bonus savings on all your equipment needs before the end of the tax year.

**Darby's
EZ Plan**

Darby will help Finance your Dream Practice
with Hassle-Free, Interest-Free Financing

**All Darby Customers in Good-Standing are
APPROVED for \$10,000!**

No Money Down!
No Credit Check!
No Application!

No Interest!
No Hassle!
No Gimmicks!



EZ Pay Plan Terms and Conditions:

This offer is valid for the intended recipient only. Not all Darby Dental Supply, LLC Customers will qualify for this offer. Small and large equipment purchases between \$3,500-\$10,000 qualify for 6 months interest-free financing. Financing is funded directly from Darby Dental Supply, LLC. Customers must be active for at least 3 months with good payment history and no past due balance. Total invoice will be divided into six equal payments. Payments will be automatically processed on the 15th of every month beginning the 15th of the following month via credit card or electronic check. Qualifying products will be determined at the sole discretion of Darby Dental Supply, LLC. Consumables do not qualify. Offer Expires 12/31/15

CONTENTS

think equipment... think darby.com

- ✓ Comprehensive Equipment Offers that include but is not limited to Chairs, Compressors and Vacuums
- ✓ Access to a Nationwide Independent Service Network who are Specialized Dental Technicians Trained to Address all your Equipment Needs
- ✓ Various In-House Interest-Free Finance Plans as well as Long-Term Plans Available
- ✓ Equipment Solutions from Top Manufacturers
- ✓ Equipment Specialists that are here to Answer any Questions you may have and Provide Information
- ✓ Rapid Handpiece Repair; Repairs that are less expensive and faster than most manufacturers



Air Abrasion & Polishing	2	Handpieces	40
Amalgamators	4	Handpieces/Electric	45
Amalgam Separators	5	Handpieces/Hygienist	46
Autoclaves	5	Handpieces/Maintenance	45
Cabinets	7	Intraoral X-Ray	47
Cameras	6	Intraoral Digital Generator	47
Cancer Screening/Caries Detection	7	Intraoral Digital Sensors	52
Carts	8	Laboratory Equipment	52
Chair Ensembles	11	Operator Lights	54
Chair/Specialty	22	Lasers	52
Compressors	24	Sonic Scalers	58
Cone Beam/Panoramic Digital	26	Stools	59
Curing Lights	30	Ultrasonic Cleaners	62
Defibrillators	32	Ultrasonic Scalers	63
Delivery Systems	33	Vacuum Systems	55
Electrosurgical Units	37	X-Ray Processing Equipment	56
Endodontic Equipment	38		

MANUFACTURER INDEX

Air Techniques	68	Dentsply Profesional	IBC
Bien Air	41	Miele Professional	36
Carestream	57	Sota	48-49

IRS Section 179 encourages business owners to invest in equipment or technology by allowing them to deduct a substantial amount of the asset's value the first year. Capital leases qualify for a tax deduction for the year they are placed in service. Contact your tax advisor to determine if your current equipment needs may qualify you for Section 179 tax savings.

Darby is an authorized dealer for many major equipment lines. Our equipment specialists are here to assist you!

888.395.1341
darby.com/equipment



DARBY DENTAL SUPPLY, LLC

Not Responsible for Typographical Errors

AIR ABRASION & POLISHING

Air-Flow S2 120-130V

Hu-Friedy

- Professional Removal of Deposits and Stains
- Removes Calculus, Dental Plaque, Soft Deposits
- Combines Two Devices in One



8430025

\$4498.95

BioSonic Suvi Ultrasonic Piezo Scaling System

Coltene



Premier Kit (Tap Water) Biosonic Suvi Unit with Handpiece and Footswitch, Water Line, 2 Grips, 2 Ultrasonic Tips, 2 Torque Tip Wrenches

9060036

\$1675.50

Biosonic Suvi Elite Piezo Scaler and Air Polisher (Tap Water) Biosonic Suvi Unit With Handpiece And Footswitch, Water Line, 4 Grips, 2 Ultrasonic Tips, 2 Torque Tip Wrenches, 2 Polisher Nozzles, 180 g Polishing Powder

9060040

\$4000.95

Aquacut Quattro

Velopex

- Clean, Treat, Wash, and Dry
- Portable
- Faster than Hard Tissue Laser at a Fraction of the Cost
- Size: 11.8" W X 9.4" H X 9.4" D, 9 lbs.
- 1 Year Warranty on Parts



Handpiece, Foot Control Pedal and Two Grades of Cutting Media, Stain Removal Powder

9545892

\$4249.25

Biosonic Ultrasonic US1000R

Coltene

- Multi-Directional Foot Pedal for Easy Operation
- Turbo Button for an Operator-Controlled Power Boost
- Unit's Small Footprint Saves Space
- No Bulky External Power Supply
- 115V Model



Unit, Handpiece, Foot Switch, Quick Connect

9060302

\$1018.95

Cavitron Propphy JET Air

Dentsply Professional

- Wireless Foot Pedal with Tap-On Technology
- Propphy Mode Auto Cycles Short, Medium, Long
- Graphics, Color and Diagnostic Display with Service and Low Battery Indicators
- Purge 2 Minute Water Flush
- Handpiece Cable with Swivel
- Provides Ease of Operation and Mobility
- Alternate Between Air Polish and Rinse without Touching the Pedal
- 3 Warranty
- 2 Year Cavitron Care Maintenance Plan



0804135 Unit

\$3161.50

JET Package: Cavitron Propphy Jet Air Polishing System, JET-Mate Sterilizable Detachable Handpiece, Tap-On Technology Wireless Foot Pedal, 2 Cavitron Air Polishing Inserts, Propphy-JET Sodium Bicarbonate Propphy Powder, JET-Fresh Aluminum Trihydroxide Propphy Powder

8291066

\$3431.95

Cavitron JET Plus

Dentsply Professional

- Activates Scaling with a Single Tap of the Foot Pedal
- Propphy Mode Auto Cycles Alternate Between Air Polish and Rinse Without a Need to Touch the Pedal
- Tap-On Technology • 25% Greater Power and Hands-Free Boost Activation
- 3 Year Warranty
- 3 Year Cavitron Care Maintenance Plan



8290748 Unit

\$5279.95

JET Plus Package: Plus Ultrasonic Scaler and Air Polishing System, 3 Jet-Mate Sterilizable Detachable Handpieces, 2 Jet Air Polishing Inserts, Tap-On Technology Wireless Foot Pedal, Propphy-Jet Sodium Bicarbonate Propphy Powder, Jet-Fresh Aluminum Trihydroxide Propphy Powder, Fitgrip 10S Insert

8291060

\$5997.95

PROPHYflex 3

KaVo

- Very Light for Unsurpassed Ergonomics
- Tip Provides Increased Cleaning Power through Improved Focusing and Perfect Concentration of the Powder Jet
- Can Easily be Taken from Room to Room
- Grip Sleeve Features 360° Swivel



8700634 Black

8700966 Violet

\$1370.25

RONDOflex Plus 360 with Water Spray

KaVo

- Easy-To-Use
- Portable
- Multiflex Connection
- Sterilizable
- 1 Year Warranty



Unit, Reservoir 27 Micron, Reservoir 50 Micron, 75 g 27 Micron Powder, 75 g 50 Micron Powder, 2 Silicone Reservoir Covers, 4 Tips, Large Cleaning Drill, Small Nozzle Needle

8700746

\$2763.50

Jetpolisher 2000

Deldent

- Portable
- Compact: 3" X 3.7"
- Economic
- 1 Year Warranty



9500719

\$1338.75

AMALGAMATORS

Touch Pad Amalgamator

Darby Dental Supply

- Rugged, Sturdy Design with Touch Pad Controls and Digital Display
- Programmable Timer Allows Customized Trituration Times
- Constant Speed Motor Ensures a Consistent and Accurate Mix Every Time
- Can Be Used with a Variety of Encapsulated Materials
- 90 Day Warranty



9500821
\$363.25

ProMix Amalgamator

Dentsply Caulk

- Accurate Microprocessor Controlled
- Touch Pad Controls, LED Display
- Programmable Preset Memories
- Spring Tensioned, Molded Capsule Holder
- Sealed Mix Area
- Smooth Surface, Compatible with Many Disinfectants
- Sleek Ergonomic Design
- 1 Year Warranty



8133170
\$1209.95

RotoMix Capsule Mixer

3M ESPE

- Easy Loading and Unloading of Capsules
- Touch Pad Features Both Preset and Programmable Setting Options for Simple Operation
- Typical Mixing Speed: 2850 rpm
- Centrifuging Speed: 950 rpm
- 2 Year Warranty



8789790
\$962.95

Silamat S6

Ivoclar Vivadent

- Homogeneous Mixing Results
- Patented and Time-Tested Silamat Technology
- Figure Eight Mixing Pattern
- Above Average Rotation Speed of 4500 rpm
- 3 Year Warranty



9536272
\$585.95

Ultramat 2

SDI

- Consistent Accurate Trituration
- Practical
- Multi-Use Mixer
- High Energy Output
- Low Energy Usage
- Simple to Use
- Quiet Low Vibration
- Dual Voltage
- 5 Year Warranty



4473100
\$624.95

Wig-L-Bug

Dentsply Rinn

- Sturdy Reinforced Arms
- Easy-To-Use Icon-Driven Control Panel
- Accurate Digital Circuitry with LED Read-Out of Time and Speed
- Speeds of 3800, 4200, 4600 and 4800 rpm
- Safety Cover Shields Capsules
- Reduces Noise
- 1 Year Warranty



Model MSD
Multi-Speed Digital
4.75" W x 10.25" D x 8" H; 110 v
8312676
\$657.25

AMALGAM SEPARATORS

Amalsed Direct Amalgam Separator

Medentex

- Ideal for any Wet or Dry Vacuum System
- Iso 11143 Certified
- Over 99% Amalgam Separation Efficiency
- Flow Rate Of 0.8 Gal/Min per Separator
- Modular Design with a Small Footprint to Fit any Dental Practice
- 3 Year Warranty
- Small Unit For Offices with 1-2 Dentists
- Large Unit For Offices with 3-4 Dentists

Amalsed Direct Wet

8950020 Small

8950022 Large

Amalsed Direct Dry

8950024 Small

8950026 Large

Amalsed Conversion Kit

8950028 Direct Replacement for
Air Techniques Guardian

**Call Your Darby Equipment
Specialist for Pricing**



HG5 Amalgam Separation System

Solmetex Inc.

- No Contracts with Hidden Fees
- No Daily Maintenance or Decanting
- No Pumps
- Services 1 - 10 Chairs
- 29"H x 10"W x 8"D



1 1/2" Inlet and Outlet Piping Fernco
Couplers, Floor/Wall Mount Bracket
9559083

\$847.25

AUTOCLAVES

Full and Semi Automatic Autoclaves

Tuttnauer

- Top Quality
- High Performance
- Efficient Sterilization
- Dependable

Semi-Automatic

2540 M

6060442

\$4185.25

Fully Automatic

EZ 9 Plus

6060490

\$4867.75

EZ 11 Plus

6066094

\$5507.50

Valueklave

6060482

\$2292.95

EZ 9 Plus-P

6060492

\$5500.75

EZ 11 Plus-P

6060496

\$6139.75



CAMERAS

Clarix i4D Digital Intraoral Camera

SOTA Imaging

- Unique Optic Technology
- Seamless Integration for Imaging and Practice Management Software
- Auto Focus Mode to Marco Focus Mode
- Lowest Distortion and Best Image Quality
- 2 Year Manufacturer Warranty, Including Parts and Labor



8710100
\$2750.00

CS 1600 Intraoral Camera

Carestream

- Highlights Potential Caries with Unique "Scan and Detect" Workflow
- Quantification Levels Correlate to Possible Caries Degree
- Combines Reflectance and Fluorescence Effects for More Sensitive Results
- USB for Easy Sharing



8200595
\$4249.95

Camrex 191A

Dentamerica

- Contoured Handpiece with Lens Protector
- 4 LED White Light for Realistic Color Reproduction
- Ergonomic Design
- One-Hand Operation, Lightweight
- 1 Year Warranty



9562556
\$929.95

Software 191 USB
9562558
\$114.95

Futudent Professional HD Dental Camera

Futudent

- Loupe Mounted HD
- Cloud Storage and Sharing
- HD Video, Pov Video, Still Imaging
- Adaptable to Most Loupes and Lights



Futudent HD Camera, Recording Software License, 16 mm Lens, USB Control Pedal, 10' USB Cable
9240020
\$3029.95

CS 1500 Intraoral Camera

Carestream

- One-Button Image Capture
- Auto-Focus and Liquid Lens
- 8 LED Lighting System Technology



Direct USB
8200750
\$2899.95

Wireless Dock Station
8200564
\$1179.95

CANCER SCREENING/CARIES DETECTION

DIAGNOdent Classic

KaVo

- Up to 90% Accurate Caries Detection
- Portable with Fiber Optic Tubing and Light
- Easy to Use
- Sterilizable
- Allows for Patient Interaction and Education



8700617

\$2421.75

DIAGNOdent Pen

KaVo

- Handheld Laser
- Carries Detection
- Added Mobility
- Exhibits Little or No Fluorescence
- Audio Signal



*Pen Shown
with Display

DIAGNOdent Pen Unit, 2 Sterilizable Tips for Occlusal Surfaces, Sterilization Cassette, Sterilizable Calibration Standard, 1 Standard AA Battery

8700618

\$2449.95

Display

8700873

\$619.95

DOE SE Oral Exam System

DentLight

- LED Beam Technology
- Length: 7.8", Weight: 3.9 Oz.
- Easy Activation Raised Buttons
- Cordless, Pocket-Sized Portability
- Non-Memory Lithium Ion Battery
- 45-Minute Run-Time; 90 Minutes From Start to Full Charge
- Multiple Charge Options



DOE Exam Wand with Violet Light Head, Fluorescence Viewer, Patient Safety Goggles, Charging Stand, Charge Adaptor, 100 Barrier Sleeves

9507880

\$1462.50

CABINETS

Alabama Style Cabinet

Modular & Custom Cabinets, Ltd.

- 21½" W X 18¾" D X 32" H
- Top Slides Side-to-Side
- Drop-Leaf Door for Storage
- Ideal for Amalgamator Unit
- Contains Sufficient Drawer Space
- 3 Drawers: 1-2½", 1-5½", 1-6½"
- Electrical Power Bar
- Alabama Fixed Front

Colors: Almond, Folkstone, Snow White, Surf



9502399

\$639.95*

North Carolina Style Cabinet

Modular & Custom Cabinets, Ltd.

- 21½" W X 18¾" D X 32" H
- Slideout Shelf on Side to Assist in Various Office Procedures
- Hinged Drop-Leaf with Pull-Out Drawer for Amalgamator
- Three 2¼" Instrument Drawers
- One Large Material Drawer

Colors: Almond, Folkstone, Snow White, Surf



9502419

\$699.95*

Doctor's Mobile 210

Modular & Custom Cabinets, Ltd.

- 21½" W X 18¾" D X 32" H
- Fixed Top
- Four Instrument Drawers
- Three Storage Drawers



9502429

\$699.95*

Call Your Darby Equipment Specialist for More Information

*Installation & Shipping Additional

CARTS

3 HP Automatic Cart and Hygienist Cart

Beaverstate

- Automatic Selection for 3 Handpieces
- Non-Retracting Water Coolant
- Water Coolant On/Off and Flow Control
- Asepsis Handpiece Tubing, Sterling (Specify Straight or Coiled)

S-4300 3 HP Automatic
9626160

\$1759.95

S-4350 3 HP Automatic Hygienist
w/Vacuum
9626162

\$1819.95



3 HP Automatic Duo Swing Cart with Vacuum

Beaverstate

- Pivoting Arm Mounted Asepsis Designed Automatic Selection for 3 Handpieces
- Side-Mounted Control Adjustments
- 360° Swing for Easy Left/Right Conversion
- Storage Organizer Assembly
- Pivoting Arm Mounted Vacuum Canister with Removable Screen (Uses 131-053 Screen)
- Autoclavable HVE and Saliva Ejector Valve, Tubing and Holder

S-4250 3 HP Automatic Duo
Swing Cart with Vacuum
9626170

\$2585.95



3 HP Automatic Doctor's Cart and Duo Cart with Vacuum

Beaverstate

- Asepsis Designed Automatic Selection for 3 Handpieces
- Side-Mounted Control Adjustments
- Non-Retracting Water Coolant Adjustment, Air Coolant Adjustment and Purge
- Asepsis Handpiece Tubing, Sterling (Specify Straight or Coiled)

S-4100 3 HP Automatic Doctor's Cart
9626166

\$1529.95

S-4150 3 HP Automatic Duo Cart with
Vacuum
9626168

\$1699.95



3 HP Automatic Doctor's Cart

Beaverstate

- Automatic Selection for 3 Handpieces
- 3-Way Syringe with Quick Change Autoclavable Tip
- Master On/Off Toggle with Indicator
- Non-Retracting Water Coolant Adjustment, Air Coolant Adjustment and Purge

A-4100 3 HP Automatic Doctor's Cart
9626172

\$1765.95

A-4150 3 HP Automatic Doctor's Cart
with Vacuum
9626174

\$2112.95



Model 1273 International Cart on U-frame

DCI Equipment

- 3-HP Automatic with Syringe
- Clean Water System
- Additional Options Available



4758170

\$2321.95

Table Top DP Cart Delivery

Engle Dental Systems

- AS-1 Control Head with 3 Auto Handpiece Holders
- Assistant 3-Way Air/Water Syringe
- 30.5" to 43.5" Table Top Height Adjustment
- Individual Drive Air Handpiece Adjustment



1530190

\$2995.95

Flip Top Dr's Cart Delivery

Engle Dental Systems

- 3 Auto Handpiece Holders, 25" to 37" Top Height Adjustment
- Individual Water Coolant Controls
- Individual Drive Air Handpiece Adjustment
- Handpiece Flush/Purge System



1530191

\$2129.95

Flip Top Dr's Cart Delivery

Engle Dental Systems

- 30.5" to 43.5" Table Top Height Adjustment
- Asepsis Handpiece Tubing
- Assistant 3-Way Air/Water Syringe
- Saliva Ejector



1530192

\$1995.95

Flip Top DP Cart Delivery

Engle Dental Systems

- 3 Auto Handpiece Holders, 25" to 37" Top Height Adjustment
- Solids Collector
- H.V.E
- Saliva Ejector



1530205

\$2262.95

CARTS

4085 Doctor's Cart

Westar

- 3 Way Syringe with Autoclavable Tip
- Self-Contained Bottled Water System
- Standard Foot Control



5660190

\$1899.95

4081 Dual Purpose Cart

Westar

- Swing Mount Delivery
- Self-Contained Bottled Water System
- 3-Way Syringe with Autoclavable Tip
- Assistant's Syringe with Autoclavable Tip



5660192

\$2251.95

4082 Assistant Cart

Westar

- Assistant Syringe with Autoclavable Tip
- Self-Contained Bottled Water System



5660913

\$1477.95

Standard Ortho Cart

Westar

- Five Drawers
- Rear Access Door
- Laminated Top and Sides



5660101 Fixed Base
5660100 Mobile Base

\$1509.95

CPU Ortho Cart

Westar

- Five Drawers
- Keyboard Pull Out
- Laminated on Top and Sides
- Rear Access Door
- Space for CPU



5660103 Fixed Base
5660102 Mobile Base

\$1803.95

CHAIR ENSEMBLES

Helix Operator System

Beaverstate

\$10,699.95!*
Installation & Shipping FREE!



Basic Contents Included: Left/Right Swing Posts and Bracket with Brushing (Only Available on Helix Operator), 3 Handpiece Automatic Control, Top Post Mount System (Only Available on Helix Operator), Telescoping Vacuum Arm (Only Available on Helix Operator), Operator Light (Shown Above), Doctor's Operator Stool, Assistant's Operator Stool, Post Mount Water Bottle Kit, Epic Operator Chair, 110V.

Call Your Darby Equipment Specialist for Information on Additional Options.

*Includes Basic Installation and Shipping!

CHAIR ENSEMBLES

Sierra Operator System

Beaverstate

\$10,999.95!*

Installation & Shipping FREE!



Basic Contents Included: 3 Handpiece Automatic Control, Top Post Mount System, Side Box with Light Post, Water QD and Flow Control for C-4201 Cuspidor Only (Not Shown Separately), Cuspidor with Vacuum for 145-002 Side Box Only (Not Shown Separately), Operator Light (Shown Above), Doctor's Operator Stool, Assistant's Operator Stool, Epic Operator Chair, 110V, Epic Chair Adapter.

Call Your Darby Equipment Specialist for Information on Additional Options.

***Includes Basic Installation and Shipping!**

Alliance Ensemble

DCI Equipment



Optional Porcelain Cuspidor

\$8999.95!*

Installation & Shipping FREE!



Optional Euro-Style

Standard Upholstery Color Options



Deep Sea Cocoa Mulberry Deep Sapphire Fawn Feather

Basic Contents Included — Hydraulic Chair, Narrow or Wide Back Upholstery, Doctor's Stool, Assistant's Stool, 1244 Curved Post Light & The Alliance 1250 Dental Unit Which Includes: 3 Hp Automatic, Quick Clean Air Water Syringe, Wet-Dry Foot Control, Utility Center, Self Contained Water System, Air/Water Quick Connects, Telescoping Assistant's Arm, HVE, Saliva Ejector, 4-Hole Midwest Tubing. **Basic Price \$8999.95***

Additional Options Also Available — Kavo or Midwest Handpiece Bundles, 5-Hole or 6-Pin Power Optic System, Touch Pad Control for all Chair Functions (Need to Specify LH or RH), Additional Handpiece Position, Additional HVE & Hose, Additional Assistant's Quick Clean Syringe with Autoclavable Tip, Additional Umbilical, Piezo 115 Volt Scaler, Monitor Mount, Porcelain Cuspidor, Upgrades on Chair and Stool Upholstery.

Call Your Darby Equipment Specialist for Information on Additional Options.

***Includes Basic Installation and Shipping!**

CHAIR ENSEMBLES

Alliance Swing-Mount Ensemble

DCI Equipment



Optional Euro-Style

\$9499.95!*

Installation & Shipping FREE!



Standard Upholstery Color Options



Deep Sea Cocoa Mulberry Deep Sapphire Fawn Feather

Basic Contents Included — Hydraulic Chair, Narrow or Wide Back Upholstery, Doctor's Stool, Assistant's Stool, 1244 Curved Post Light, 1258 Ellipse Mount Dental Unit (Which Includes 3 Hp Automatic, Quick Clean Air Water Syringe, Wet-Dry Foot Control, Utility Center, Self Contained Water System, 4-Hole Midwest Tubing), Rear-Mounted Assistant's Vacuum Kit (Which Includes, HVE, Saliva Ejector, 4 Position Assistant's Element with Vacuum Trap). **Basic Price \$9499.95***

Additional Options Also Available — Kavo or Midwest Handpiece Bundles, 5-Hole or 6-Pin Power Optic System, Touch Pad Control for all Chair Functions (Need to Specify LH or RH), Additional Handpiece Position, Additional HVE & Hose, Additional Assistant's Quick Clean Syringe with Autoclavable Tip, Additional Umbilical, Piezo 115 Volt Scaler, Monitor Mount, Porcelain Cuspidor, Upgrades on Chair and Stool Upholstery.

Call Your Darby Equipment Specialist for Information on Additional Options.

***Includes Basic Installation and Shipping!**

Pro 30 Ensemble

DCI Equipment



Pro 31 Ensemble

DCI Equipment



Optional Euro-Style
Available for Pro 30 and Pro 31

Biofree tubing standard on all units.

\$8199.95!*

Installation & Shipping FREE!

Basic Contents Included - Hydraulic Chair, Narrow or Wide Back Upholstery, Doctor's Stool, Assistant's Stool, 1244 Curved Post Light & the Pro 30 Dental Unit Which Includes: 3 Hp Automatic, Quick Clean Air Water Syringe, Wet-Dry Foot Control, Utility Center, HVE, Saliva Ejector, Procelain Cuspidor, Manual Bowl Rinse, Manual Cup Filler

Basic Price \$8199.95*

\$7999.95!*

Installation & Shipping FREE!

Basic Contents Included - Hydraulic Chair, Narrow or Wide Back Upholstery, Doctor's Stool, Assistant's Stool, 1244 Curved Post Light & the Pro 31 Dental Unit Which Includes: 3 Hp Automatic, Quick Clean Air Water Syringe, Wet-Dry Foot Control, Utility Center, HVE, Saliva Ejector.

Basic Price \$7999.95*

Additional Options also Available for the Pro 30 & Pro 31- Kavo or Midwest Handpiece Bundles, 5-Hole or 6-Pin Power Optic System, Touch Pad Control for all Chair Functions (Need to Specify LH or RH), Additional Handpiece Position, Additional Hve & Hose, Additional Assistant's Quick Clean Syringe with Autoclavable Tip, Additional Umbilical, Piezo 115 Volt Scaler, Monitor Mount, Upgrades on Chair and Stool Upholstery, Self-Contained Water System, Air and Water Quick Connects, and Electromechanical Chair.

Call Your Darby Equipment Specialist for Information on Additional Options.

***Includes Basic Installation and Shipping!**

CHAIR ENSEMBLES

Pro Hygiene Ensemble

DCI Equipment



\$7399.95!*

Installation & Shipping FREE!

Standard Upholstery Color Options



Deep Sea Cocoa Mulberry Deep Sapphire Fawn Feather

Basic Contents Included - Hydraulic Chair, Narrow or Wide Back Upholstery, Doctor's Stool, 1244 Curved Post Light & the Pro Hygiene Unit which Includes: 3 HP Automatic, Quick Clean Air Water Syringe, Wet-Dry Foot Control, Utility Center, HVE, Saliva Ejector.

Basic Price \$7399.95*

Additional Options Also Available - 5-Hole or 6-Pin Power Optic System, Touch Pad Control for all Chair Functions (Need to Specify LH or RH), Additional Handpiece Position, Additional HVE & Hose, Additional Assistant's Quick Clean Syringe with Autoclavable Tip, Additional Umbilical, Piezo 115 Volt Scaler, Monitor Mount, Upgrades on Chair & Stool Upholstery, Self-Contained Water System, Air and Water Quick Connects, and Electromechanical Chair.

Call Your Darby Equipment Specialist for Information on Additional Options.

***Includes Basic Installation and Shipping!**

Engle 310

Engle Dental Systems



Engle 300T

"The Only New Traverse Chair Available To Replace The P/C Chairman"

Shown with optional TwinStitch™ upholstery and Sequoia Cuspidor



\$10,687.95!*
Installation & Shipping FREE!

ENGLE 310 PACKAGE INCLUDES:

Engle 300 Chair (Non-Sling)
Engle 310 Delivery System (Non-Hidden Umbilical)
Engle 300 Dental Light System

Basic contents included: E300 Control Head with 3 Auto Hand-Piece Holders, Individual Water Coolant Controls, Asepsis Hand-Piece Tubing, Wet/Dry Foot Control, Hand-Piece Flush/Purge System, 3-Way Air/Water Syringe, Master On/Off Switch, Flex Arm with Air Brake, Adjustable Swivel Tray, Solids Collector, H.V.E., Saliva Ejector, Bottled Water System, Bottled or City Water Selector Switch, Large Junction Box with Air & Water Master Valve/Filter/Regulator Assemblies, Control Head Mounted Touch-Pad (Specify Side), Utility Center With Quick Connect Water Auxiliary, E300 Cuspidor with 4-Position Holder Bar, 5 ft. Long Umbilical.

Additional options also available - 5-Pin Hand-Piece Illumination System, 6-Pin Hand-Piece Illumination System, Assistant's 3-Way Air/Water Syringe, H.V.E. With 6 ft. Tubing, *Engle 310 Delivery System - Hidden Umbilical, Light Post Mounted Telescopic Assistant's Arm, Additional Touch-Pad - Left Side Chair Mount, Upgrade to Seamless Ultraleather™ Upholstery, Upgrade To Slings Seamless Ultraleather™ Upholstery, Upgrade to Ultraleather™ TwinStitch™ Upholstery, Upgrade to Slings Ultraleather™ TwinStitch™ Upholstery, Chair Foot Control (Non-Traverse), Upgrade to 4 Automatic Hand-Piece Stations (E300), Upgrade to 5 Automatic Hand-Piece Stations (E300), Additional Umbilical - Per Foot

Basic Price \$10,687.95*

*Vacuum Drain Required for Cuspidor with Hidden Umbilical.

Call Your Darby Equipment Specialist for Information on Additional Options.

***Includes Basic Installation and Shipping!**

CHAIR ENSEMBLES

Engle 320

Engle Dental Systems

**5 YEAR
WARRANTY**
Material and
Workmanship

**10 YEAR
WARRANTY**
Electronic
Positioning
System

**MFG. &
Assembly
IN
USA**

Engle 300T

*"The Only New Traverse Chair
Available To Replace The
P/C Chairman"*

Shown with optional
TwinStitch™ upholstery



\$9299.95!*

Installation & Shipping FREE!

Engle 320 Package Includes:
Engle 300 Chair (Non-Sling)
Engle 320 Delivery System (Non-Hidden Umbilical)
Engle 300 Dental Light System

Basic contents included: E300 Control Head with 3 Auto Hand-Piece Holders, Individual Water Coolant Controls, Asepsis Hand-Piece Tubing, Wet/Dry Foot Control, Hand-Piece Flush/Purge System, 3-Way Air/Water Syringe, Assistant's 3-Way Air/Water Syringe, Master On/Off Switch, Flex Arm With Air Brake, Adjustable Swivel Tray, Solids Collector, H.V.E., 2nd H.V.E., Saliva Ejector, Bottled Water System, Bottled or City Water Selector Switch, Large Junction Box With Air & Water Master Valve/Filter/Regulator Assemblies, Control Head Mounted Touch-Pad (Specify Side), Utility Center with Quick Connect Water Auxiliary, Telescopic Assistant's Arm with 4-Position Holder Bar, 5 ft. Long Umbilical.

Additional options also available - 5-Pin Hand-Piece Illumination System, 6-Pin Hand-Piece Illumination System, Engle 320 Delivery System - Hidden Umbilical, Additional Touch-Pad - Left Side Chair Mount (Non-Traverse), Upgrade to Seamless Ultraleather™ Upholstery, Upgrade to Slings Seamless Ultraleather™ Upholstery, Upgrade to Ultraleather™ Twinstitch™ Upholstery, Upgrade to Slings Ultraleather™ Twinstitch™ Upholstery, Chair Foot Control (Non-Traverse), Upgrade to 4 Automatic Hand-Piece Stations (E300), Upgrade to 5 Automatic Hand-Piece Stations (E300), Additional Umbilical - Per Foot.

Basic Price \$9299.95*

Call Your Darby Equipment Specialist for Information on Additional Options.

***Includes Basic Installation and Shipping!**

Engle 360

Engle Dental Systems

**5 YEAR
WARRANTY**
Material and
Workmanship

**10 YEAR
WARRANTY**
Electronic
Positioning
System

**MFG. &
Assembly
IN
USA**

Engle 300T

*"The Only New Traverse Chair
Available To Replace The
P/C Chairman"*

All shown with optional
TwinStitch™ upholstery



\$9499.95!*
Installation & Shipping FREE!

ENGLE 360 PACKAGE INCLUDES:

Engle 300 Chair (Non-Sling)

Engle 360 E300 Auto Control Delivery System - Left/Right

Engle 360 Dental Light Delivery System - Left/Right

Engle 360 Assistant's Vacuum Delivery System - Left/Right

Basic contents included: E300 Control Head With 3 Auto Hand-Piece Holders, Individual Water Coolant Controls, Asepsis Hand-Piece Tubing, Wet/Dry Foot Control, Hand-Piece Flush/Purge System, 3-Way Air/Water Syringe, Assistant's 3-Way Air/Water Syringe, Master On/Off Switch, Flex Arm With Air Brake, Adjustable Swivel Tray, Solids Collector, H.V.E., 2nd H.V.E., Saliva Ejector, Bottled Water System, Bottled Or City Water Selector Switch, Oversized Hidden Umbilical Junction Box With Air & Water Master, Valve/Filter/Regulator Assemblies, Control Head Mounted Touch-Pad (Specify Side), Assistant's Vacuum Delivery Quick Connect Water Auxiliary.

Additional options also available - 5-Pin Hand-Piece Illumination System, 6-Pin Hand-Piece Illumination System, Assistant's 3-Way Air/Water Syringe, H.V.E. With 6 ft. Tubing, 360 Monitor Delivery Post Assembly - Left/Right, 360 Light Delivery Post Assembly - Left/Right, Engle 360 E300 Cuspidor Delivery System - Left/Right, Engle 360 AS-1 Auto Control Delivery System - Left/Right, Engle 360 AS-1 Hygiene Control With Vacuum Delivery System - Left/Right, Additional Touch-Pad - Left Side Chair Mount, Upgrade to Seamless Ultraleather™ Upholstery, Upgrade to Slings Seamless Ultraleather™ Upholstery, Upgrade To Ultraleather™ Twinstitch™ Upholstery, Upgrade To Slings Ultraleather™ Twinstitch™ Upholstery, Chair Foot Control (Non-Traverse), Upgrade to 4 Automatic Hand-Piece Stations (E300), Upgrade to 4 Automatic Hand-Piece Station, Upgrade to 5 Automatic Hand-Piece Stations (E300)

Basic Price \$9499.95*

Call Your Darby Equipment Specialist for Information on Additional Options.

***Includes Basic Installation and Shipping!**

CHAIR ENSEMBLES

A6 Operator Systems

Flight Dental Systems



\$6899.95!*

Basic contents included: Hybrid Chair using Hydraulic Base and Electro-Mechanical Chair Backrest, 12 Seamless and Plush Upholstery, Ceramic Cuspidor with Timed Cup Fill and Bowl Rinse, Torch LED Light Included – Sensor Controlled, Assistant Instrumentation Includes: Deluxe Touchpad Control with Syringe + HVE + SE.

Call Your Darby Equipment Specialist for Information on Additional Options.

***Includes Basic Installation and Shipping!**

Superior

Ritter Dental



Basic Superior Ensemble Includes:

- 3 HP Automatic
- Quick Clean Air Water Syringe
- Wet-Dry Foot Control
- Utility Center
- Assistant Instrumentation
- Doctor's Stool
- Assistant's Stool
- Halogen Operating Light
- Cuspidor (Optional)
- Self-Contained Water System
- Two Touch Panel Delivery System
- Multi-Function Foot Control

Upholstery Colors



c01 Grey



c02 Mint



c03 Beige



c07 Sky Blue



c04 Rosa



c05 Yellow



c06 Dark Blue



c08 Dark Red

Additional Options:

- LED Light
- Additional HVE
- 17" Monitor with Mount
- Built-In Intraoral Camera
- Built-In Scaler
- Additional HP Position
- Euro-Style Dental Unit (Shown)
- 5-Hole or 6-Pin Fiber Optic System

\$10,499.95!*

Installation & Shipping FREE!



Call Your Darby Equipment Specialist for Information on Additional Options.

*Includes Basic Installation and Shipping!

CHAIR/SPECIALTY

Premier Orthodontic Chair

Weststar

- Pedestal Base with 5" Manual Height Adjustment
- Foot Operation Switch with Automatic Exit (Return)
- Non-Articulating Headrest
- HiGlos Powdercoat Inside and Out
- Synchronized Seat and Back Tilt
- No Armrest (Optional Add On)
- Quick Change Upholstery
- 5 Year Warranty



5660173 Plush Upholstery	\$2499.95*
5660175 Sling Plush Upholstery	\$2499.95*
5660174 Sling Asepsis Upholstery	\$2199.95*
5660172 Asepsis Upholstery	\$2129.95*

Oral Surgery Chair

Weststar

- Left/Right Upholstered I.V. Arms with One Interchangeable Pillow
- Wheelchair Accessible Double Articulating Headrest
- Adjustable/Removable Arms
- 7 Way Foot Control with Two Programmable Preset Positions and Automatic Return (Exit)
- Metal Construction with HiGlos Powdercoat Inside and Out
- Quick Change Upholstery
- Synchronized Seat and Lumbar with Back Recline
- Thermal Overload Protection
- Low Voltage
- 5 Year Warranty
- Lifetime Bushings Throughout all Pivot Points
- Electro-Mechanical Cantilever System
- Floor to Seat: 16" to 32"
- 5 Year Warranty



5660075
\$4465.95*

Call Your Darby Equipment Specialist for Information on Additional Options.

***Includes Basic Installation and Shipping!**



Model 3010

Galaxy

- Reclining Backrest
- Adjustable Headrest
- 27" Diameter Hydraulic Base
- Padded Armrest
- Available in a Variety of Colors

8131629

\$959.95

Model 3060

Galaxy

- Comfortable and Versatile
- X-Ray and Examination Chair in One
- Adjustable Headrest, Backrest and Armrest
- Removable and Lockable Armrest
- 27" Diameter Hydraulic Base
- 17" Inside Dimensions
- 23 1/2" Outside Dimensions Includes Arms
- Adjustable Height from 20" to 28"



8131637

\$2159.95



Century Plus Series Model 4225

Galaxy

- Adjustable Headrest
- Sturdy Construction
- Available in Many Designer Vinyl Colors
- Adjustable Height from 20" to 28"
- Reclining Backrest

8131644

\$714.95

Call Your Darby Equipment Specialist for Information on Additional Options.

***Includes Basic Installation and Shipping!**

COMPRESSORS

Direct-Drive Oil-less Compressors

Acme Dental MFG

- The Triple or Quad Compressors Incorporate the Best Design Features in the Industry
- The Basic Pump Design Ensures Enhanced Capabilities and No Maintenance
- Less Noise Than Other Oil-Less Compressors Because of the Basic Design
- Extremely Durable
- All Tanks are Powder Coated Inside and Out



8960004	1 HP, 1 to 3 users, 23"x18"x30"	\$2969.95*
8960006	2 HP, Dual 4 to 6 users, 34"x24"x33"	\$4339.95*
8960008	3 HP, Triple 6 to 12 users, 52"x24"x33"	\$5777.95*

Rocking Piston Oil-less Compressors

Acme Dental MFG

- Includes a Fan System Which Reduces Discharge Air Temperature and Permits Easy Operating Cooling Control of the Motor and Compressor Head
- Properly Engineered to Ensure Consistent Air Supply and Quiet, Smooth Operation
- Stainless Steel Desiccant Dryer System and Electronic Automatic Drain for Quality Performance
- All Tanks are Powder Coated Inside and Out
- High Quality Compressors Designed for Extreme Durability



8960010	1.5 HP, Dual 1 to 3 users, 23"x18"x30"	\$3349.95*
8960012	2.25 HP, Triple 4 to 6 users, 34"x24"x33"	\$4529.95*
8960014	3 HP, Quad 6 to 12 users, 52"x24"x33"	\$6839.95*

***Installation and Shipping Additional!**

Ultra Clean Lubricated Air Compressor

Tech West Inc.

- Compressor Design Offers the Quietest Compressors in the Industry
- The Air is Dried Before the Tank to Prevent Bacteria Build-Up in the Tank
- All Models Have Desiccant Air Drying Systems
- Energy-Efficient Motor Reduces the Need for Costly Boost Transformers
- Compressors are Available in Single, Dual or Triple Head Configurations
- Vibration-Free Copeland Heads Provide Smooth Running Compressors
- Air Intake Filters Trap Dirt, Dust and Airborne Pollutants
- Energy-Efficient Thermally Protected Motors
- Moisture Indicators Standard on All Models



All Tech West
Lubricated
Compressors
Come with a
2 Year
Warranty!

4455040 Single head 2 user 115 volt	\$4229.95*
4455042 Single head 2 user 230 volt	\$4229.95*
4455044 Dual head 4 user 230 volt	\$6349.95*
4455046 Triple head 6 user 230 volt	\$9179.95*

Ultra Clean Oil-less Air Compressor

Tech West Inc.

- Compressor Design Offers the Quietest Compressors in the Industry
- All Air Receiver Tanks Have Internal Epoxy Coating Applied
- The Air is Dried Before the Tank to Prevent Bacteria Build-Up in the Tank
- All Models Have Desiccant Air Drying Systems
- Energy-Efficient Motors Reduce the Need for Costly Boost Transformers
- Compressors are Available in Single, Dual or Triple Head Configurations
- Teflon Coated Pistons and Sleeves Ensure Long Life of the Compressor Heads
- Air Intake Filters Trap Dirt, Dust and Airborne Pollutants
- Energy-Efficient Thermally Protected Motors
- Moisture Indicators Standard on All Models



All Oil-less
Compressor Motors
Carry a Full
3 Year
Warranty

All other
Components
Carry a Full
2 Year
Warranty

4455010 Single head 2 user 230 volt	\$3869.95*
4455020 Double head 4 user 230 volt	\$5959.95*
4455030 Triple head 6 user 230 volt	\$7924.95*

***Installation and Shipping Additional!**

CONE BEAM/PANORAMIC DIGITAL X-RAY

CS 8100 Digital Panoramic System

Carestream Dental

- Intuitive User Interface Makes it Easier to Select Settings
- Preset Programs and Step-By-Step Instructions Prevent Errors
- Image Acquisition in 10 Seconds
- More Accurate, Real-Time Diagnoses
- Easier Positioning



CS 9300 System

Carestream Dental

- A Low Dose, Three-In-One Solution
- Dual Modality Panoramic and 3D Imaging
- Exceptional Detail and Range
- Up to 85% Lower Radiation Dose Than Traditional Panoramic Imaging



CS 8000C Digital Panoramic and Cephalometric System

Carestream Dental

- High Diagnostic Value Panoramic X-Ray Images with Homogenous Density
- Sharpness Filter for Better Perspective of Opaque Areas
- Highlight Effect to Clearly Visualize



CS 8000C Cephalometric Arm

Call Your Darby Equipment Specialist for Prices

Panoura 18S

ImageWorks

- Two Fields of View (Dent Mode and Oral Mode)
- High Definition Images Comprised of 80 μ m Voxels
- Head Support to Hold Patient's Head Securely in Place
- Innovative Sliding Sensor System
- Low Patient Dose
- Precise Patient Positioning Every Time
- Space Efficient Design



9130052 2D Panoramic w/ 3D and Cephalometric
9130054 2D Panoramic w/ 3D

Call Your Darby Equipment Specialist for Prices

CONE BEAM/PANORAMIC DIGITAL X-RAY

Veraviewepocs 3D R100

Morita

- 3D Reuleaux
- Full Arch Field of View
- Reveals Bone Structure, Resorption, Apical Lesions, Root Fractures and More
- Six Fields of View, Including a Full Upper and/or Lower Arch
- Improved Patient Safety with Dose Reduction Feature
- New Panoramic Focal Plane Adjustment and Partial Pan/Ceph Image Functions
- Remote Software Support
- Installation 2 Day Training
- 3 Year Warranty

2960015



Veraview IC5 HD

Morita

- 10-Second Option Offers 25% Reduction in Pixel Size
- Reveals Bone Structure, Resorption, Apical Lesions, Root Fractures and More
- High Resolution Image at a Low Dose
- Six Fields of View, Including a Full Upper and/or Lower Arch
- Improved Patient Safety with Dose Reduction Feature
- Exposure Adjust Density and Brightness Levels Automatically
- New Panoramic Focal Plane Adjustment and Partial Pan/Ceph Image Functions
- 3 Year Warranty
- Remote Software Support
- Installation and 2-Day Training

2960030



Call Your Darby Equipment Specialist for Prices

encompass

Panoramic

- Side Entry Access
- Face-to-Face Orientation
- Carbon Fiber Temple Supports
- Multi-Point Laser Alignment
- Stationary Bite Block
- High Quality Images
- Easy to Use
- 2 Year Parts and Labor Warranty

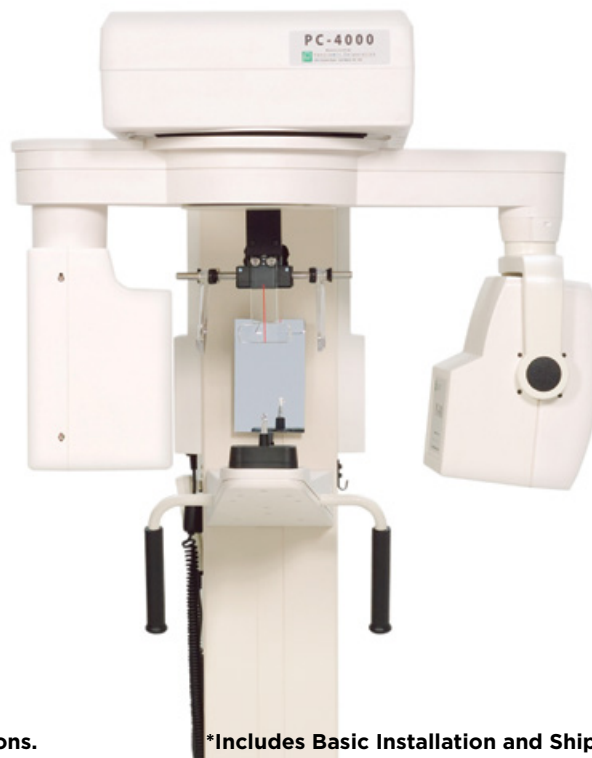


9080001 - Single Sensor **\$31,995.00***
9080000 - Dual Sensor **\$44,995.00***

PC-4000

Panoramic

- Digital Panoramic Imaging System
- EV Clarity
- Unique One-Click Tool Easily Eliminates Spinal Column Distortion
- No Blurring
- Increased Contrast Up to 300%
- Easy to Use
- High Quality Images
- 2 Year Parts and Labor Warranty



9080010
\$23,995.00

Call Your Darby Equipment Specialist for Information on Additional Options.

***Includes Basic Installation and Shipping!**

CURING LIGHTS

LED Curing Light

Darby Dental Supply

- Auto Ramp-Up
- High Power Performance
- Anti-Glare Glass Optic Guide
- Flexible Curing Times
- Angled Light Guide Rotates 360°
- Powerful Lithium-Ion Battery
- Easy-to-Read Digital Display
- Simple Sterilization
- Programmable From 5 to 30 Seconds
- 8 mm Light Guide
- LED Handpiece
- 1 Year Warranty



9520645
\$299.95

Elipar DeepCure-S Curing Light

3M ESPE

- Safe
- Predictable
- Reliable
- Advanced Optics



Curing Light, Charging Base, Li-on Battery, Light Guide, Eye Shield
8677000

\$1599.95

S•P•E•C 3 LED Curing Light

Coltene

- Lightweight Construction Reduces Hand Fatigue
- Ideal for Most Dental Composites
- Plasma Emulation Mode Significantly Reduces Procedure Time



9065150
\$1101.25

Fusion 4.0 Curing Light

DentLight

- Pen-Style, High Power
- Advanced Multifunction Focused LCD Light
- Low-Dispersion Focused Beam
- 5-Second Cures of all Composites
- Small, Sleek, Low-Profile, Well-Balanced
- Large Raised Run Button
- Heavy Duty Aircraft Aluminum Construction with Shock-Proof Durability



9507885 Silver
9507887 Blue
9507789 Pink
9507891 Gold
\$839.95

SmartLite Focus Pen Style L.E.D. Curing Light

Dentsply Caulk

- Designed to Ensure Reliable Curing all the Way to the Floor of the Proximal Box
- Collimated Light Beam and Evenly Distributed Beam Profile Minimize the Energy Lost Over Distance
- One Touch Operation
- Excellent Intraoral Control



8130922
\$721.75

SmartLite Max

Dentsply Caulk

- Corded or Cordless Operation
- Long-Lasting Battery
- Boost, Ramp, Pulse, and Standard Modes
- Large Curing Area
- Dual Wavelength: 390-460 nm. Range
- High Output: 1400 mW/cm2
- Fan and Vent-Free for Easy Disinfection



Charging Base, Assembly, Hand-piece Assembly, Curing Probe, Wall Plug-In, Power Supply 120v, Eye Protection Assembly, 50 Disposable Barrier Sleeves
8130330

\$1257.75

Silverlight

GC America

- Cordless, Lightweight LED Curing Lamp
- Operates in Fast Mode or Slow Mode
- Integrated Radiometer
- Li-Ion Battery – 120 Min. Charge Time for 320 10-Sec. Cycles
- Wavelength Range: 440-480 nm.
- 1 Year Warranty on Device and Battery



Unit, Optical Fiber, Optical Protection, Charging Unit, Power Cord, User Manual
8191180

\$918.50

Bluephase Style LED Curing Light

Ivoclar Vivadent

- Polywave technology to Cure All Dental Materials
- Specially Designed Light Probe for Easy Access to Posterior Teeth
- Cordless or Corded Use



Handpiece, 10 mm light probe battery, charging base, polar supply, 50 protective sleeves
9534638

\$1217.50

Demi Ultra Curing Light

Kerr Restoratives

- Hybrid Construction Unites Metal and Patented Valox-Molded Plastic in an Ultra-Light, Durable and Chemical-Resistant Design
- Lightweight, Comfortable, Ergonomic Design
- 360° Rotating Tip Help Minimize Hand and Arm Stress
- Extra-Large Heat Sink Provides Cool, Efficient Performance
- Two-Button Operation Provides to Access PLS Energy Management
- Fully-Integrated Radiometer with LED Indicators that Instantly Communicate the Curing Light System's Power Status



9402110

\$1485.50

iBrite Bleaching Light

Pac-Dent

- LED Whitening Unit
- Features a Complete Tooth Color Correction Function
- Specially Designed to Maximize Tooth Whitening Penetration Effect
- Emits No Harmful UV Rays
- Gives You Complete Control to Set Your Desired Tooth Whitening Session Length
- Programmed to Switch Between Multiple Functions Seamlessly
- 1 Year Warranty



9069600

\$1559.25

Radii-Cal Curing Light

SDI

- High Powered Cordless LED Curing Light
- High Intensity of 1200mW/cm2
- Weighs Just 144 g/5.1 oz.
- Ramp Up Mode
- Cordless
- Easy to Clean
- Built-In Radiometer
- Completes 720 Ten-Second Cures with One Recharge
- Removable Battery Pack
- 2 Year Warranty



4473108

\$507.50

Radii Plus LED Curing Light

SDI

- High Powered Cordless
- Lightweight Slimline Design with Small Tip and 360° Rotating Head
- Heat Sink Technology Reduces Heat
- Built-In Radiometer
- High Intensity: 1500mW/cm2
- Long Battery Life



Handpiece, Charger, Multi-Region Charge Pack, 100 Barrier Sleeves, 3 Lens Caps, 5 Light Shields

4473430

\$924.95

DEFIBRILLATORS

Lifeline AED

Defibtech

- Semi-Automatic External Defibrillator
- Simple and Unintimidating
- Exceeds American Heart Association Performance Recommendations
- Advanced Biphasic Technology
- Automatically Adjusts Shock Delivery to the Individual's Needs

3811080

\$1198.95

Extra Defibrillation Pads, 1 Pair

3811085

\$38.95

Pediatric Defibrillator Pads, 1 Pair

3811094

\$98.95



Samaritan PAD 300P

HeartSine Technologies

- Compact
- Scope Biphasic Technology
- Highest Rating Against Dust and Water

Samaritan PAD 300P
3901650

\$1048.95

Pedo Pad-Pak
3901652

\$178.95

Adult Pad-Pak
3901656

\$138.95

AED Plus

ZOLL Medical Corporation

- Real CPR Help
- CPR Feedback Tool
- Audio and Visual Prompts
- Guides Rescuer Through the Complete Chain

Unit, Adult Pads, Batteries and Carrying Case

0733100

\$1535.50

AED Plus Adults Pads

0733102

\$162.50

AED Plus Pedo Pads

0733116

\$100.95



DELIVERY SYSTEMS

S3600/S3606

Beaverstate

- 3 HP Automatic
- Doctor's System with Pneumatic Brake Flex Arm



9626175 2" Diameter
9626177 Top Post Mount

\$2192.95*

S3420

Beaverstate

- 3 HP Automatic 2" Diameter Post Mount
- Doctor's System, 2 Wet, 1 Dry
- Manual Flex Arm



9626180

\$1799.95*

S2500

Beaverstate

- 2 HP Automatic 2" Diameter Post Mount
- Doctor's System, 1 Wet, 1 Dry
- Manual Flex Arm



9626181

\$1592.95*

S3300/S3306

Beaverstate

- 3 HP Automatic
- Doctor's System
- Pneumatic Brake Flex Arm



9626182 2" Diameter
9626184 Top Post Mount

\$2132.95*

S6300/S6307

Beaverstate

- 3 HP Automatic Euro
- Doctor's System
- Pneumatic Brake Flex Arm



9626179 2" Diameter
9626187 Top Post Mount

\$2459.95*

S5325

Beaverstate

- 2 HP Automatic Mount Hygiene System
- Telescoping Arm
- Pivoting Tray Mount Assembly



9626186 2" Diameter
\$1232.95*

Call Your Darby Equipment Specialist for Information

*Installation and Shipping Additional

DELIVERY SYSTEMS

AS-1 Series

Engle Dental Systems

- Control Head with 3 Auto Handpiece Holders
- Individual Water Coolant Controls
- Asepsis Handpiece Tubing
- 3-Way Air/Water Syringe



1530150 200 Delivery
\$3329.95*



1530110 1200 Delivery
\$4129.95*



1530129 2200 Delivery
\$3929.95*

AS-1 Hygiene Series

Engle Dental Systems

- Hygiene Control Head with 2 Auto HP and Vacuum Group
- Individual Water Coolant Controls
- Asepsis Handpiece Tubing
- Wet/Dry Foot Controls



1530148
\$3329.95*



1530147 with AS-3 Cuspidor
\$3695.95*

E300 Series

Engle Dental Systems

- 3 Auto Handpiece Holders
- Handpiece Flush/Purge System
- 3-Way Air/Water Syringe
- Flex Arm with Air Brake



1530073 with Assistant's 3-Way Air/Water Syringe, Second H.V.E., Telescopic Assistant Arm
\$4262.95*

Shown with
Sequoia Cuspidor



1530151 with E300 Cuspidor
\$3627.95*

Call Your Darby Equipment Specialist for Information

*Installation and Shipping Additional

E Sense Hygiene Deliveries

Westar

- 2 HP Automatic
- Master On/Off
- Water Coolant Adjustment
- Three Way Syringe with Autoclavable Tip
- Non-Retracting Water Coolant
- Handpiece Purge Toggle
- Asepsis Midwest 4 Hole Tubing
- Standard Foot Control
- Utility Center
- Regulators, Filters, and Air/Water Shut Off Valves
- Electronics Cable Pre-Wiring (2 Conductor)
- Flex Arm with Pneumatic Brake
- Contoured Ridged Arm
- 45" Light Pole with Light Adapter Bushing
- Stainless Instrument Tray
- Clean Water System (Bottle Water Only)



- 5660148 Rear Delivery **\$2599.95***
5660142 Excursion Left/Right with Light Pole **\$4299.95***
5660141 Excursion Left/Right **\$3965.95***
5660136 Over the Patient **\$3219.95***
5660135 Over the Patient Cuspidor **\$3609.95***

***Installation and Shipping Additional**

Invest In The G 7881

Take your practice to a higher level of efficiency, safety and care with the G 7881 thermal disinfecter.

- Save One Hour Per Day
- Fast Instrument Processing
- Eliminates Hand Scrubbing
- Extends the Life of Instruments



Call Your Darby Equipment Specialist For Details

Miele
PROFESSIONAL

ELECTROSURGICAL UNITS

RadioSurge

Macan Manufacturing

- Patient Friendly "Spark Free" Cutting
- Reduced Chair Time
- Safe, Simple, Versatile Operation
- Easily Moved for Use in Multiple Offices
- Cost Effective
- Hospital Grade Isolated Circuitry
- 3 Year Warranty on Unit



9511980

\$2115.25

Perfect TCS II

Coltene

- Removes Unwanted Tissue with Ease
- Reduces Chair Time by Simplifying Operative Procedures and Maintaining Hemostasis
- Provides Exceptional Cutting Precision for Superior Clinical and Aesthetic Results
- Allows Uneventful Healing
- 2 Year Warranty



Unit 115V, Cord Assembly S6008CE,
Electrodes (set of 3) S7010A,
Dispersive Electrode S213,
Handpiece Holder S7001, DVD
9061070

\$1582.50

Electrosurgery Unit ART-E1

BonART Co., LTD

- Stand-Alone Device
- 3 Operating Modes; Cut, Coag 1, Coag 2
- 10 Power Level Settings
- Maximum Power Output is 50w



4827004

\$501.95

ENDODONTIC EQUIPMENT

ElementsFree System

Kerr Endodontics

- Cordless
- Breakthrough Downpack Heat Source
- World Class Backfill Extruder



Downpack and Backfill Device
Dual Charging Base, Transformer,
Power Cord and Accessories
8547920

\$2494.95

Root ZX II Apex Locator

Morita

- Larger, Easy to Read Screen
- Shock-Resistant Design
- Unmatched Clinical Accuracy
- Ability to Work in Wet Canals
- Modified Design Delivers Improved Stability
- Self-Calibrating; No Buttons to Push
- Long-Touch File Holder



Unit, Probe, 3 File Holders, Contrary Electrodes
(5 Lip Clips), Tester and 3 AA Batteries
9556466 Root ZX II Apex Locator

\$1094.50

9551935 OTR Module Low Speed Handpiece

\$1331.75

Vitality Scanner 2006

Kerr Endodontics

- Outstanding Diagnostic Tool Ensures Dependable & Pain-Free Pulp Testing
- Contact-Sensing Probe Provides Good Electrical Contact Prior to Activation and Prevents Jolting Patient
- Pulsating Stimulus for Painless & Safe Pulp Testing
- Automatically Adjusts Output Level Where Needed
- 1 Year Warranty



Vitality Scanner Unit, Short Probe Tip,
Long Probe Tip, Ground Lead with Lip Clip
8542500

\$1078.95

Dia-Gun Wireless Obturation System

DiaDent

- Cordless and Compact Design
- Reliable Gutta Percha Filling
- Fast and Continuous Flow of Filling Material Tightly Seals the Canal
- Variable Temperature Settings For Precise Control Of Obturation Flow
- Quick Heating System—Temperature Reaches 200°C within 25 Seconds
- Ergonomically Designed 360° Swivel
- 1 Year Warranty



Unit with Battery, Charger, 2 Safety Caps
Plunger, 4 Plunger O-Rings, Power Adapter
and Cord, 4 X 23 g Disposable Gun Tips,
Multipurpose Wrench, Scrubbing Brush,
100 Gutta Percha Obturators
9517574

\$1070.95

DTC Motor

Kerr Endodontics

- Autoclavable
- Brushless Motor
- Provides Unmatched Versatility and Reliability
- Great Torque Range
- Better Control of Speed



Motor Console 110V, Autoclavable
Cable/Motor Assembly, Foot Pedal and
Power Cord (Contra Angle Not Included)
8222260

\$1292.75

Elements Obturation Unit

Kerr Endodontics

- System B Plugger Maximizes Condensation Force for Complete Fill
- One-Touch Controls
- Small Handpiece and Needle Maximize Visibility
- Choice of Speeds
- Micro-Motor Eliminates Hand Fatigue
- Easy-to-Read Polarized Tilting Screen
- Small Footprint
- 1 Year Warranty



8547912

\$2516.95

TF Adaptive Starter Kit

Kerr Endodontics

- Adaptive Technology
- Channels Debris Coronally
- Color Coded
- Choice of Speeds
- Control the File
- Reduces Patient Discomfort
- Easy to Follow Technique



Elements Motor, TF Adaptive Files, K-Files and the LA Axxess 2.0 Bur Kit
8223060

\$2334.50

Tri Auto-ZX

Morita

- Cordless Handpiece Allows Maximum Flexibility
- LED Control Panel for Easy Viewing
- Handpiece Motor Shuts Off Automatically After Three Minutes
- Position of the File Tip is Monitored via the LED Control Panel During Root Canal Shaping and Cleaning
- Choice of Automatic Functions Include: Auto Start/Stop, Auto Apical Reverse, and Auto Torque Reverse
- 1 Year Parts and Labor Warranty



9556467

\$1974.75

Apex ID

Kerr Endodontics

- Large Color Display Accuracy in any Root Condition
- Customizable "0 Point"
- Compact Size
- No Need for Special Solutions to Assure Accuracy
- Requires Minimal Storage and Counter Space



Apex ID Apex ID Stand, 6 Lip Hooks, 2 File Holder B, File Holder A, Probe Cord, Apex ID IFU, 3 AAA 1.5V Batteries
8547630

\$699.50

Detect Apex Locator

Dentsply Maillefer

- Large Color Screen
- Latest Multi-Frequency Technology
- Compact, Smart Design
- Fully Automatic Device
- Audible Information
- Easy to Read



Detect Apex Locator, 2 Lip Clips, 2 Connection Hooks, 2 Forks, Measuring Wire, Rechargeable Battery, Charger, DFU
4036000

\$883.25

HANDPIECES

Super Trac Plus

Darby Dental Supply

- High Quality
- Chairside Replaceable Canister
- Functional Design
- Lightweight

Standard
9430022 2/3 Hole
9430024 4 Hole
\$65.25

Push-Button
9430026 2/3 Hole
9430028 4 Hole
\$122.00

Mini
9430030 2/3 Hole
\$68.71

9430032 4 Hole
\$125.50

Fiber Optic
9430034 5 Hole Standard
\$175.50

Fiber Optic
9430036 5 Hole Push Button
\$215.17



True Speed Elite

Darby Dental Supply

- Extreme Bur Concentricity (0.0004" Maximum) for Accurate Work
- Low Noise
- Single Spray
- Canister Type Turbine for Ease of Changing at Chairside
- Double-Action Push-Button for Smoother Bur Change
- 6 Month Warranty

Push-Button
9546094 4-Hole
\$228.95

Manual
9546095 4-Hole
\$179.25



Super Trac Fiber Optic Air Turbine Handpiece

Darby Dental Supply

- Bright Dual Fiber Optics Eliminate Shadows
- Precise and Efficient Preparation
- Push Button
- Fast, Easy Operation
- Eliminates the Need for a Bur Tool
- 1 Year Warranty on Handpiece
- 3 Month Warranty on Push Button Turbine

Push Button
9523893 5-Hole
\$332.50



Super Trac Mini Handpiece

Darby Dental Supply

- Quality Construction
- Mini Head for Use with Burs, Short Shank Friction Grip Burs and Diamonds
- 1 Year Warranty on Handpiece Shell and Fiber Optics

Standard
9523894 4-Hole
\$124.95



Super Trac Air Turbine Handpiece

Darby Dental Supply

- Consistent and Powerful Torque Allows Precise and Efficient Preparation
- Chairside Replaceable Canister Turbines
- Functional Design Provides Smooth and Long Lasting Performance with Repeated Sterilization
- 1 Year Warranty on Handpiece and Fiber Optics
- 3 Month Warranty on Push Button Turbine

Standard Head
9514623 4-Hole
\$118.95

Push Button
9523891 4-Hole
\$189.95





30 WATTS

THE POWER TO DO MORE.

High power air-driven handpiece, 55 dBA, 410,000 rpm,
4 asymmetrical sprays, LED light, bur-locking mechanism.

S W I S S  M A D E

INTRODUCTORY OFFER

\$999.00

(Expires December 31, 2015)

1X TORNADO LED
& UNIFIX 6-PIN COUPLER SET

SKU No. 9510383

OR

1X TORNADO LK
(COMPLATIBLE WITH KAVO
MULTIFLEX COUPLER, NOT INCLUDED)

SKU No. 9510389

UP TO 3 YEARS WARRANTY

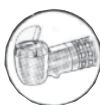


HANDPIECES

Quiet Air L Handpiece

Dentsply Professional

- Fine Mist Water Spray
- Allows Use of Longer FG Bur Lengths
- Convenient Power Lever
- 6 Month Warranty



8641915 4-Hole
\$622.25

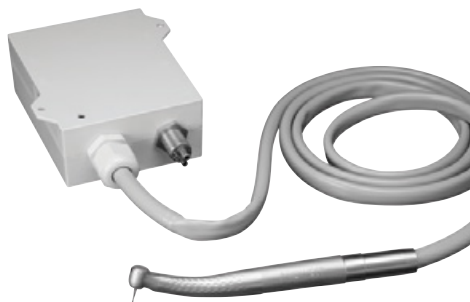
8641856 Fiber Optic 5-Hole
\$926.95



Stylus ATC

Dentsply Professional

- Adaptive Torque Control
- Speed Sensing Intelligence
- Superior Turbine Suspension



ATC 890 Starter
3 Stylus ATC Plus 890 Mid-Sized
Head Fiber Optic High-Speed Handpieces
(Compatible with the Stylus ATC System)
and a Control Box
8291856

\$6190.95

ATC 890 Starter
2 Stylus ATC 890 Mid-Sized Head Fiber
Optic High-Speed Handpieces (Compatible
with the Stylus ATC System), Control Box
8291852

\$4402.25

Stylus ATC 890
High-Speed Handpiece
8291834

\$1376.75

ATC 990 Plus Starter
3 Stylus ATC 990 Mini Head Fiber Optic
High-Speed Handpieces (Compatible with
the Stylus ATC System), Control Box
8291858

\$6190.95

ATC 990 Starter
2 Stylus ATC 990 Mini Head Fiber Optic
High-Speed Handpieces (Compatible with
the Stylus ATC System), Control Box
8291854

\$4402.25

Stylus ATC 990 High-Speed Handpiece
8291836

\$1376.75

Stylus EasyCare

Dentsply Professional

- Patent-Pending Ball Bearing and Suspension System
- Fusion Optic Technology
- Innovative Design
- Quiet Operation
- 4 Port Spray

8642404 4-Hole

\$584.25

8642492 Regular Single

8642508 360 Lite

8642548 540E Mini

\$1276.75



Stylus Standard

Dentsply Professional

- Super Power Transfer
- Maximum Cutting Efficiency
- Strong, Smooth, Controlled Cutting
- Fine Mist Water Spray



8642480 180S Stylus
8642506 360S Stylus Lite
8642546 540S Stylus Mini
8642550 541S Stylus Mini

\$1276.75

Tradition L Handpiece

Dentsply Professional

- Convenience of a Power Lever
- Advanced Fusion Optics
- Excellent Torque and Reliability
- 6 Month Warranty



Fiber Optic
8642406 5-Hole

\$905.95

Tradition-PB Push-Button High-Speed Handpiece

Non Fiber Optic
8642387 4-Hole

\$584.25

Fiber Optic
8642385 5-Hole

\$905.95



**MASTER SERIES MASTERtorque
M8900L**

KaVo

- 23 Watts of Cutting Power
- 57 dB Noise Level
- Direct Stop Technology
- Increases Cutting Efficiency and Performance
- Increases Comfort Level by Lowering Noise and Pitch of the Handpiece
- Ceramic Bearing
- Plasmatec Coating
- 370,000 rpm



8700711
\$1189.95

MASTERtorque Mini M4500L

KaVo

- 17 Watts of Cutting Power
- 59 dB Noise Level
- Increases Comfort Level by Lowering Noise and Pitch of the Handpiece
- 3-Port Spray
- Small Head with Improved Angles



8700713
\$1196.75

**EXPERT SERIES EXPERTtorque
LUX E679L**

KaVo

- Standard Head
- 18W
- Ceramic Bearings
- 62db
- 4-Port Spray
- Drive Pressure @ 40 psi



8701041
\$935.25

EXPERTtorque Mini LUX E675L

KaVo

- Mini Head
- 15 W
- Ceramic Bearings
- 63 db
- 3-Port Spray
- Drive Pressure @ 45 psi



8701040
\$935.25

**SMART SERIES SMARTtorque Mini
LUX S615L**

KaVo

- Fiber Optic Miniature Head (13 Watts)
- Optimum Balance Between Speed and Torque
- MULTIflex LUX Connection
- Push-Button Auto Chuck
- 1-Port Spray
- 40 psi (2.8 Bar)
- 1 Year Warranty



8701044
\$637.50

SMARTtorque LUX S619L

KaVo

- Fiber Optic Standard Head (15 Watts)
- Optimum Balance Between Speed and Torque
- MULTIflex LUX Connection
- Push-Button Auto Chuck
- 4-Port Spray
- 40 psi (2.8 Bar)
- 1 Year Warranty



8701046
\$634.25

SMARTtorque S609C

KaVo

- Non-Fiber Optic Standard Head (15 Watts)
- Optimum Balance Between Speed and Torque
- Standard 4-Hole Connection
- Push-Button Auto Chuck
- 4-Port Spray
- 40 psi (2.8 Bar)
- 1 Year Warranty



8701043
\$411.25

HANDPIECES

430 SW

StarDental

- Lube-Free
- Ceramic Autochuck Turbine Less Swivel
- Push Button Bur Changing System and Swivel Quick Connect
- Attaches to 2-/3-line or 4-line StarDental 360° Swivel

Non-Fiber Optic
8942236

\$540.96

- Lubricated
- Solid Stainless Steel
- Ceramic Autochuck Turbine
- Small Head
- High Torque Design
- 17 Watts of Power, 11 mm Head Size
- Single Spray
- 2 Year Warranty



Non-Fiber Optic
8942204

\$684.75

430 SWL with Solid Glass Fiber Optics

StarDental

- High-Speed
- Ceramic Bearing Autochuck Turbine
- 49 g Weight
- 17 Watts of Power
- 11 mm Head
- Single Spray



Lube-Free
1 Year Warranty
8942350

\$819.95

Lubricated
2 Year Warranty
8942352

\$1135.95

Concentrix Handpiece

StarDental

- High-Speed
- Fiber Optic
- Lubricated Steel Bearing Autochuck Turbine
- Uses Either LED or Halogen StarDental Swivel
- 1 Year Warranty

SX Handpiece
8940010

\$349.50



- Non-Fiber Optic
- High-Speed
- Lubricated Steel Bearing Autochuck Turbine
- Uses Standard 4-Line StarDental Swivel
- 1 Year Warranty

SW Handpiece
8940012

\$308.95

- High-Speed
- 4-Line
- Fixed Back End
- Lubricated Steel Bearing AutoChuck Turbine
- 1 Year Warranty

FX Handpiece
8940014

\$292.25

- Fixed Back End
- 4-Line
- High-Speed
- Manual Chuck
- 1 Year Warranty

FB Handpiece
8940016

\$182.95



Solara QT Series

StarDental

- Bifurcated Solid Cellular Glass Rod Fiber Optics
- Secure Grip Autochuck System
- Lightweight Titanium Construction
- Exclusive Elliptical Shape
- Exclusive Lube-Free Ceramic Bearing Turbines
- Hiflo 360° Swivel Connections
- Small Head, High Power
- 32 g Weight
- 18 Watts
- 10.5 mm Head
- Single Port Water Spray
- 5 Year Warranty on F/O, 1 Year on HP



Solara QT
Lube-Free Handpiece
8942360

\$1165.50

Solara QT
Lubricated Handpiece
8942362

\$1299.95

StarBright Quad Fiber Optic Dental System

StarDental

- Increases Light Output
- Advanced Xenon Halogen Lamp Technology
- Energy Efficient Switching Power Supply
- Automatic Light Delay (10 Seconds)
- Adjustable Illumination Level
- Adjustable Voltage Setting (Factory Preset To 3.3V)
- Can Control up to 4 Fiber Optic Handpieces and Curing Light



8942326

\$469.95

HANDPIECES/ELECTRIC

MIDWEST E

Dentsply Midwest

- Touch Screen Interface with Separate Menu Screen
- Ability to View and Customize Operation Directly from Screen
- Hose is Field-Replaceable
- Motor with Standard E-Type Attachment Connection Weighs 59 g
- LED Light
- Autoclavable
- 3 Year Warranty



8640358

\$2799.95

NuTorque Lite

StarDental

- Two Customizable Memory Presets
- Push Button Control Panels
- Speed Range of 100-200,000 rpm
- Dimensions: 5" W x 2.5" H x 5.9" D
- Motor is 6" Length, 76 g Weight



8944290

\$1617.95

Optima MCX

Bien Air

- Brushless, Internal Spray
- Air-Driven Counterpart
- High Cutting Power
- Constant Torque



9510351 White

9510352 Blue

9510353 Orange

9510354 Green

9510355 Pink

\$1639.95

HANDPIECES/MAINTENANCE

QUATTROcare Plus

KaVo

- Automatic Handpiece Maintenance
- Ensures Top Performance and Longevity of Handpieces



8700765

\$2373.95

Midwest Automate

Dentsply Professional

- Effectively Removing Debris to Promote Lasting Handpiece Turbine Life
- Reducing Downtime
- Creating Less Mess than Traditional Handpiece Maintenance for Quick Cleanup
- Offering Unparalleled Protection with a 3 Year Warranty

Air Tube Wall Connector, Power Connection, Midwest Automated E-Type Maintenance Coupler, Midwest Low-Speed Attachment Adapter, Midwest Plus Aerosol Spray Can and Midwest Tradition/ Quiet-Air Quick Connect Maintenance Adapter and Maintenance System Absorbent Pads

8640400

\$2359.95



HANDPIECES/HYGIENIST

Hygienist Plus

Darby Dental Supply

- Designed For Disposable Prophecy Angles
- 360° Swivel Nose
- Simple Push/Pull Chuck System
- Lightweight Autoclavable
- Ergonomically Designed
- 5,000 rpm, 30-35 psi



9529950

\$398.25

ProphyPal

Denticator

- 360° Swivel and Diamond Grip Nose
- Extended Nose Cone
- 0-5,000 rpm Motor Operates at Optimal Speed
- Whisper Quiet
- Lightweight and Balanced Construction

1/Pkg.

8281230 Classic Silver

8281232 Prophecy Pink

8281234 Wild Thing Green

\$477.95

3/Pkg.

8281236 Classic Silver

8281238 Prophecy Pink

8281240 Wild Thing Green

8281242 Variety

\$1462.75



iStar

Star Dental

- Cordless
- Free From Hoses and Foot Pedals
- Variable Rotational Controls



8942380

\$729.95

Coming in
December 2015

PROPHYwiz 181P

KaVo

- For Metal Doriot Attachments or Disposable Prophecy Angles
- Ergonomic and Well-Balanced
- Autoclavable to 275°F
- 3,100 rpm, 36-43 psi
- 2.7 oz.



8700616

\$636.50

3/Pkg.

8701004

\$1399.95

RDH Freedom

Dentsply Midwest

- Cordless, Wireless Foot Pedal
- All Day Battery Life
- Eliminates Cord Drag

Premium Kit

Carrying Case, Inner Module, 3 Metal Outer Sheath, Charging

Base, Cordless Foot

Pedal, Handpiece Cradle,

Disposa-Shield Trial Pack-25,

Power Supply, 20 Nupro

Freedom DPAs

8042000 Lavender

\$1193.75



Basic Kit

Inner Module, Metal Outer

Sheath, Charging Base,

Cordless Foot Pedal,

Handpiece Cradle,

Disposa-Shield Trial Pack-25,

Power Supply, 20 Nupro

Freedom DPAs

8042006 Lavender

8042008 Limited Edition Pink

\$750.25

Inner Module

8042002 Lavender

8042004 Pink

\$448.75

Prophy Star 3

Star Dental

- Lightweight 62 g Anodized Aluminum
- Ergonomic Autoclavable Rubber Grip
- Colorful Replacement Grips
- 4" Handpiece Length
- Autoclavable Up to 275°F



8942295

\$559.50

4/Pkg.

8942297 Replacement Grips

\$36.75

Young Handpiece

Young

- Engraved Matte Grip Rotates 360°
- Reverse Radius Silhouette
- Contra-Angled Connector
- Smooth, Easy Handling
- Reduces Cord Drag Aggravation



9442295 Silver

9442430 Purple

\$559.95

RDH Hygienist

Dentsply Professional

- Ergonomic
- Lightweight
- Smooth, Easy Swivel
- Non-Slip Surface



8645005 1/Pkg.

\$714.25

8645010 3/Pkg.

\$2046.25

INTRAORAL X-RAY

CS 7600 Dental Imaging System

Carestream Dental

- Fast, Compact Imaging System
- Delivers Consistent High Quality
- Exclusive Scan and Go Technology
- Can be Used Chairside and Centrally



Call Your Darby Equipment Specialist for Pricing

DIGIREX PSP Scanner

Apixia

- Flexible
- Wireless
- Imaging Software Included
- Minimum Size, Maximum Protection
- Small Tabletop Design



1480100

\$6949.95

INTRAORAL DIGITAL GENERATOR

CS 2200 Intraoral X-Ray Generator

Carestream Dental

- High Frequency (DC) X-Ray Generator Yields Precision Images with Accentuated Contrast
- Reduces Patient Exposure by up to 25%
- Operates with Both Film and Digital Imaging Devices
- Automatically Sets Exposure Times Depending on the Patient's Body Weight and Region of Interest
- Four Mounting Positions, Three Arm Lengths, and Two Types of Timers



8200550 67" Short Arm
8200552 74" Standard Arm
8200554 81" Long Arm

\$3399.95

Intraskan DC

ImageWorks

- Optimized Parameters
- Versatile Operation with Precise Positioning
- Pre-Set Exposure Times and mA Values for each Anatomical Exposure Setting
- Dual Microprocessors



9130020 33" Ext. Arm
9130022 24" Ext. Arm
9130024 15" Ext. Arm

\$4234.95

Max-Ray Mobile X-Ray System

Vector R and D Inc

- Wireless, Handheld, Portable
- Rechargeable Li-Polymer Battery Pack
- As Low as 1/7 the Radiation Exposure Compared to Conventional X-Ray Systems
- Lightweight and Safe
- Easy to Use, Comfortable to Handle



9490075 Black
9490077 White

\$4159.95



SPECIALS

PRICING VALID OCT. 1, 2015 - DEC. 31, 2015

EXCLUSIVE DEALS FOR
DARBY CUSTOMERS

MSRP: \$6,995
starting from **\$5295**
→ **SAVE \$1,700**



The Award-winning

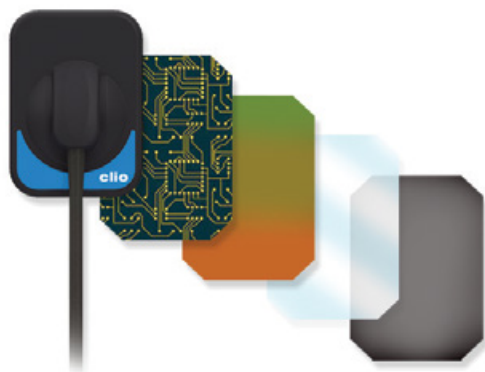
clio

Digital X-ray Sensors

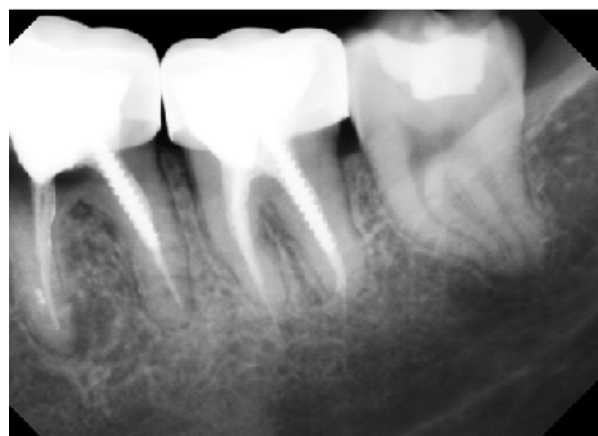
Available in size #1 and size #2



Clio sensors feature a patented Kevlar reinforced strain relief cable entry and ultra durable tungsten cables that can stand up against the toughest work environment. Hermetically sealed and completely waterproof, Clio sensors are one of the most durable sensors available. That's why they come standard with a 5-year extended warranty



- Next Generation CMOS for crystal clear x-rays
- Comfortable rounded edges
- Expertly engineered with special shock absorbers
- Repairable cables
- 5-Year extended warranty



Open Architecture
Works directly in software like:

VIXWIN
PLATINUM
DEXIS

Clio X-ray Sensors and Cliosoft Software integrate hassle-free into most imaging software. Features advanced tools for quicker patient exams, auto image processing, and auto-bridge onto your practice management like Easy Dental, Eaglesoft, Practiceworks, Softdent, and more.

Part # 8710128 Size 1
8710126 Size 2
8710170 Direction Integration Driver
8710120 Combo #1 & #2 Package w/Cliosoft Software
Contact Your Darby Equipment Specialist for Details

cliosoft
DIGITAL IMAGING SOFTWARE





SPECIALS

PRICING VALID OCT. 1, 2015 - DEC. 31, 2015

EXCLUSIVE DEALS FOR
DARBY CUSTOMERS



The Award-Winning

claris i4D

Digital Intraoral Camera

MSRP: \$3,750

\$2750

→ **SAVE \$1,000**



The lightest, most simple to use intraoral camera features 8 white LED Lights paired with optimized ray trace optical technology to help produce the highest quality images.

For over 28 years, SOTA has been a US leading manufacturer, producing optics for NASA satellite telescopes. Every SOTA purchase ensures only the most sophisticated technology, quality, and support in every product.



"Easy focus adjustment,
BEST in study."
-Clinician's Report



"Showed least image distortion
in laboratory testing."
-ADA Product Review



- SONY® CCD Sensor Technology
- Direct Monster® USB 2.0 plug-in with simple op to op mobility
- Integrates with nearly all imaging software
- Comes with free version of Cliosoft Imaging Software
- Free Lifetime Tech Support and installation
- 2-year manufacturers warranty



TRY 7-DAYS FREE

Try the Claris i4D Intraoral camera directly in your operator risk and cost free for 7-days. Visit sotaimaging.com for more details.

Part # 8710100 Claris i4D w/cradle and USB Cable

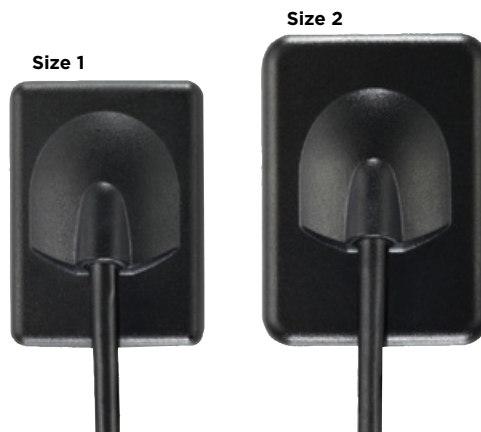
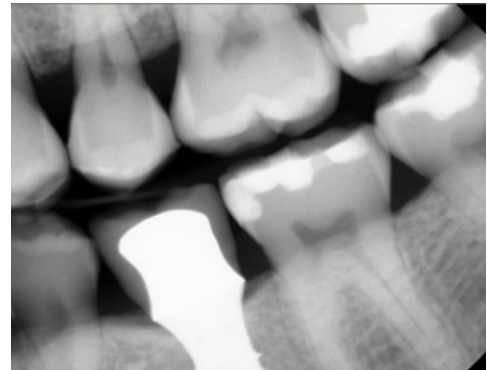
Contact Your Darby Equipment Specialist for Details

INTRAORAL DIGITAL SENSORS

RVG 6200 System

Carestream Dental

- 40 Pre-Set Image Enhancement Filters
- Proprietary Algorithms Provides State-of-the-Art Imaging Processing
- Customize Images According to Your Own Specifications
- Simply Position, Expose, and View for Seamless Image Acquisition
- CS Adapt Module



Sensor

8200741 Size 1

8200743 Size 2

RVG 6500 Digital Radiography System

Carestream Dental

- An Intelligent Positioning System that Reduces Retakes
- Wireless Mobility that Makes Operatories Cable-Free
- Intelligent Positioning System (IPS) Allows You to Visually Align the Sensor Placement with an Intuitive, Real-Time Display
- Minimize the Risk of Retakes, Cone Cuts, and Other Common Positioning Mistakes
- Wi-Fi Connectivity so You Don't Have to Worry about Cables Being in Your Way
- The World's First Intelligent Positioning System to Help You Get the Right Shot the First Time
- Sensors Available in Three Sizes for Different Size Patients
- Rounded Corners Ensure Maximum Patient Comfort
- Film-Quality Images



Sensor

8200506 Size 0

8200504 Size 1

8200508 Size 2

Call Your Darby Equipment Specialist for Information

SuniRay2 Intraoral Sensor

Suni Medical Imaging Inc.

- Pixel Resolution of the High Resolution Sensors Exceeds 15 lp/mm
- Produces High-Quality Images with an X-ray Dose that is only a Fraction of the Standard Dose
- Sensor Pixel Well Capacity is Very High
- Higher Accommodation of Grayscale (Bone Density) Dynamic Range
- 2 Year Warranty

Sensor
9506660 Size 1

\$4729.95

9506661 Size 2

\$5139.95



Dr. Suni Plus

Suni Medical Imaging Inc.

- Designed with Rounded Corners for Superior Patient Comfort
- Built to Last with a Reinforced Cable Attachment
- Extremely Reliable and Durable
- The Plug and Play Sensors are Easy to Install and Can Be Operated in Different PCs Throughout the Practice
- Three Sensor Sizes, Children and Adults with Special Anatomical Considerations
- 3 Year Standard Warranty

Sensor
9506663 Size 0

\$2949.95

9506664 Size 1

\$3299.95

9506665 Size 2

\$3819.95



Clio X-Ray System

Sota

- Industry Best 26 lp/mm
- Free Cliosoft Software Multi-User License
- Free Auto-Bridge
- Direct USB Cable with No Docking Station
- Repairable USB Cable
- Fiber Optic Plate Sensors
- Largest Active Area for Maximum Coverage
- Fully Waterproof with Sealed Cable and Housing Design
- 5 Year Limited Warranty (2-Year Manufacturer Warranty and 5 Year Replacement Program)

Combo Digital X-Ray System
8710120 Size 1 & 2

\$12,499.95

Combo Digital X-Ray System
8710120 Size 1 & 2

\$12,499.95

Digital X-Ray System
8710122 Size 2

\$7629.95



LABORATORY EQUIPMENT

Proform Machine IV Vacuum Former

Keystone

- Replaceable Vacuum Platform
- Contour Vacuum Platform that Allows Full Airflow Under the Model
- Locking Handles
- Plug and Play Spade Connectors
- Simple Touch Pad Control
- 110 Volts
- Uses 5" x 5" Resin Sheets
- 5 Year Guarantee on Parts and Labor



9523462
\$419.95

Air Vac XQ

Mizzy

- Less Time
- Precise Adaption and Accuracy
- 5 Year Warranty



9.5" x 9.5" x 9.5", 10 lb.
9523630
\$485.75

Vac-Former

Darby Dental Supply

- Easy to Use
- Vacuum for Sheet Resin Materials
- Symmetrical Heating System
- 5 Year Warranty



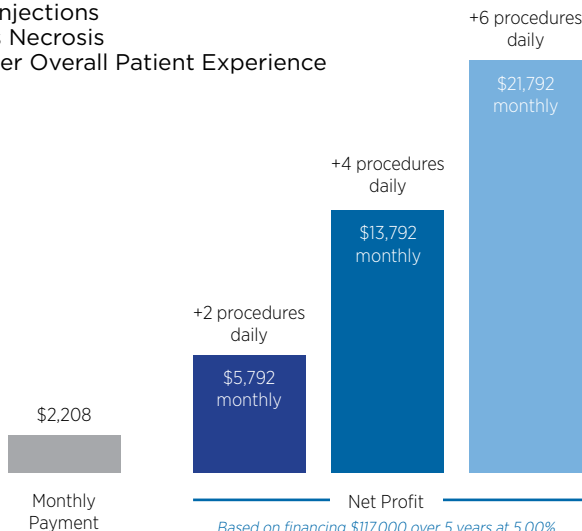
9521975
\$356.75

LASERS

Solea

Convergent Dental

- Virtually Anesthesia-Free for Hard Tissue
- Little Noise
- No Vibration
- Promotes Faster Healing
- No Injections
- Less Necrosis
- Better Overall Patient Experience



Based on financing \$117,000 over 5 years at 5.00%, includes 5 year service and software updates. Taxes and shipping not included. Net profit may vary on individual practice rates.



Call Your Darby Equipment Specialist for Price

LASERS

ProLase Soft Tissue Diode Laser

Pac-Dent

- Laser Energy Used is Specifically Designed to Treat Gums and Other Soft Tissue Safely and Comfortably
- 808 nm Wavelength
- Cleaner Cutting and Faster Hemostasis
- Better Absorption by Hemoglobin and Oxyhemoglobin
- Easily Moved Between Operatories

7370000

\$3899.95



Photon & Photon Plus

Zolar Technology

- 810 nm Diode Flexibility
- Complete Portability with Built-In Tutorials
- Multi-Lingual Interface
- 20 Preset Customizable Programs
- Large LCD Touch Screen
- Less Bleeding, Fast Healing
- Teeth Whitening/Bleaching

Photon 3 Watt

9180000 Disposable Tips

9180001 Strip Cut Fiber

\$3059.95

Photon Plus 10 Watt

9180002 Disposable Tips

9180003 Strip Cut Fiber

\$5195.95



SOL Portable Diode Laser

Den-Mat Holdings, LLC

- Delivers True Portability, Power and Precision
- Enhanced Ergonomics
- Simple Interface
- Wireless Foot Pedal
- High-Contrast Aiming Beam Designed to Make Laser Dentistry Easier
- Ideal for Both Entry-Level and Experienced Laser Users
- True Portability and Superior Precision
- 2 Year Warranty

Handpiece, AC/DC Power Converter, Laser Operating Key, Fiber Tips, Single-Use Barrier Sleeves for Handpiece, 3 Protective Glasses, Wireless Foot Pedal

8890137

\$2419.95



OPERATORY LIGHTS

Aerolight

Beaverstate

- Exclusive Ball and Socket Pivot Allows Unrestricted Multi Axis Positioning
- Unique Adjustable Pivot Tension without Tools
- Slim Profile Minimizes Heat
- Sharply Defined Rectangular Light Pattern

Aerolight PM Light Post Mount
9626192

\$1165.95*

Aerolight Ceiling Mount
9626194

\$1559.95*

Aerolight Wall Mount
9626193

\$852.95*



Celux

Beaverstate

- Lamp Head Adjusts Vertically, Horizontally or Diagonally
- Easy Read On/Off Intensity Switch
- Reflector with Dichroic Coating

110 Volt
9626196

220 Volt
9626198

\$852.95*



Call Your Darby Equipment Specialist for Information

***Installation and Shipping Additional**

Track Mount Light Model 1232
DCI Equipment



4758230
\$2199.95*

Ceiling Mount Light Model 1231
DCI Equipment



4758212
\$1699.95*

Top Mount Light Model 1248
DCI Equipment



4758244
\$1239.95*

E300 Post Mounted Dental Light System
Engle Dental Systems



1530195
\$1499.95*

E300 Ceiling Mounted Dental Light System
Engle Dental Systems



1530194
\$1899.95*

Call Your Darby Equipment Specialist for Information

*Installation and Shipping Additional

OPERATORY LIGHTS

IRIS LED

Flight Dental

- Low Heat Production
- No Fan Needed
- LED Lamps
- Less Noise
- Minimum LED Lifetime
Approximately 50,000 Hours



9040036 Dual Track Light

\$7319.95*

9040038 Single Track Light

\$5099.95*

WeStarlight

Westar

- Dual Intensity Color Temperature:
4500 to 5500 Degrees Kelvin
- Scratch and Discoloration Resistant Shield
- Shadow Free

Excursion WeStarlight LED

5660167

\$1719.95*

Excursion WeStarlight VIII & Post

5660052

\$1095.95*

WeStarlight VIII

5660027

\$709.95*

WeStarlight LED

5660064

\$624.95*



Call Your Darby Equipment Specialist for Information

*Installation and Shipping Additional

CS 3500

Carestream
DENTAL



ALL YOU NEED FOR THE **PERFECT RESTORATION,** AND NOTHING YOU DON'T

WELCOME TO THE **NEW REALITY**

In the new reality, the CS 3500 intraoral scanner creates highly accurate, true color 2D images and 3D models of teeth without conventional impressions.

- Truly handheld, portable with no trolley and plug and play
- Powder-free with slim scanner head for comfortable, custom-fit restorations
- Unique light guidance system for more patient-focused scanning
- Part of a flexible and open system, allowing you to choose between in-house or lab milling

Contact your Darby Representative for more information.



SCAN



DESIGN



MILL

SHADE GUIDE/SONIC SCALERS

VITA Easyshade Advance 4.0

Vident

- Includes the Latest Version of VITA's Digital Shade Matching Technology
- New "Average" Mode in the Advance 4.0 Allows Measurement of up to 30 Shades on a Single Tooth
- While using Bluetooth, the Measurement Data can be Wirelessly Transferred to the VITA Assist Communication Software on Operator Computers

Easyshade Advance Handpiece,
Easyshade Advance Base Unit with
Calibration Holder, Power Supply with
Universal Wall Adapter Kit, Mini USB
Cable, 160 Infection Control Sleeves,
USB Bluetooth Module
9534699

\$1948.95



Deluxe Air Scaler

Darby Dental Supply

- Quiet, Gentle Performance
- Removes Tough Stains, Deposits and Calculus
- Orbital Water Spray
- Fits with Many Popular Tips
- Completely Autoclavable

Air Scaler, Universal
Tip 4-Hole
9520054

\$429.95



SONICflex 2008 Air Scaler

KaVo

- Single Turn Tip Installation
- Air/Water Coolant Exits at Tip
- Hygienic Grip
- Three Different Performance Levels
- MULTIflex Connection
- Automatic Drive Air Regulator
- Operates at 36 psi
- Set water at 15 psi
- Drive Pressure: 2.5 - 4.2 bars
- Frequency - 600 Hz
- Amplitude - 240 Micron
- Plasmatec Coating

Unit, 3 Tips: Universal, Sickie,
Perio and Tip Removal Tool
8700980

\$1495.95

Without Tips
8700982

\$1259.95



SONICflex 2008 L LUX Air Scaler

KaVo

- Fiber Optic
- Single Turn Installation
- Air/Water Coolant Exits at Tip
- Hygienic Grip
- Three Different Performance Levels
- MULTIflex Connection
- Automatic Drive Air Regulator
- 2.5 Bars Drive Pressure
- Set Water at 15 psi

Unit, 3 Tips: Universal, Sickie,
Perio and Tip Removal Tool
8700984

\$1599.95

Without Tips
8700986

\$1349.95



Titan Blis-sonic Ergonomic Scaler

StarDental

- Fir Pressure: 40 psi
- Air Flow: 1.5 SCFM
- Water Pressure: 15 psi Typical
- Water Flow: 25 CC/Min. Typical
- Sterilization: Steam
- Sterilization up to 275°F (135°C)
- 1 Year Warranty



SW
8944250 Swivel Sold Separately

\$649.95

K
8944254 4-Line
\$699.95

STOOLS

Operatory Stool Beaverstate



Doctor's Stool
9626188 Adjustable Backrest
\$409.95

Assistant's Stool
9626190 Adjustable Torso Support
\$583.95

Swing-Matic Brewer Company



9520600
\$338.95

Naugahyde Swing-Matic Brewer Company



Assistant Stool
9520640 Left
9520620 Right
\$499.95

EG-9000 Brewer Company



Doctor's Stool
9520624
\$769.95

These items are drop-shipped from the manufacturer. Please allow up to 6 weeks for delivery.

STOOLS

Standard Stool

Engle Dental Systems



Standard Doctor's Stool
1530000

\$459.95

Standard Assistant's Stool
1530002

\$534.95

Deluxe Stool

Engle Dental Systems



Deluxe Doctor's Stool
1530004

\$609.95

Deluxe Assistant's Stool
1530006

\$689.95

Saddle Stool

Galaxy



Doctor's Stool
8131691

\$386.95

Assistant's Stool
8131692

\$486.95

Ergonomic Series Stool

Galaxy



Doctor's Stool
8131693

\$386.95

Assistant's Stool
8131694

\$486.95

These Items are drop-shipped from the manufacturer. Please allow up to 6 weeks for delivery.

ErgoPro Stool

Productive Practices



Doctor's Stool
4864100 Vinyl

\$669.95

4864102 Ultra Vinyl

\$749.95

4864104 Special Order Upholstery

\$824.95

ErgoPro Assist 3 Stool

Productive Practices



Assist 3 Stool
4864140 Vinyl

\$539.95

Assist 3 Stool
4864142 Ultra Vinyl

\$599.95

Doctor's Stool
4864144 Special Order Upholstery

\$679.95

ErgoPro Straddle Stool

Productive Practices



Vinyl
4864106

\$559.95

Special Order Upholstery
4864108

\$639.95

ErgoPro Assist 2 Stool

Productive Practices



Assistant's Stool
4864134 Vinyl

\$489.95

4864136 Ultra Vinyl

\$539.95

4864138 Special Order Upholstery

\$609.95

ErgoPro Assistant's Stool

Productive Practices



Assistant's Stool
4864112 Vinyl

\$849.95

4864114 Ultra Vinyl

\$929.95

4864116 Special Order Upholstery

\$999.95

Ultra & Economy Stool

Westar



5000 Ultra Doctor's Stool
5660011

\$409.95

5000 Ultra Assistant's Stool
5660171

\$549.95

2000 Economy Doctor's Stool
5660025

\$249.95

Economy Assistant's Stool
5660026

\$424.95

These Items are drop-shipped from the manufacturer. Please allow up to 6 weeks for delivery.

ULTRASONIC CLEANERS

Ultrasonic Cleaner

BrandMax

- All Stainless Steel
- Superior Cleaning Power
- Powerful Acoustic Pulse Generation
- Includes FREE Basket and Heat



8900800 3 Liter	\$379.95
8900802 5 Liter	\$518.25
8900803 Recessed 5 Liter	\$769.95
8900804 10 Liter	\$1064.75
8900806 Recessed 10 Liter	\$1321.50
8900808 13 Liter	\$1455.25
8900810 20 Liter	\$1855.75

Pro-Sonic 600 with Mechanical Timer

Sultan Healthcare

- 1½ g (5.7 L) Tank Capacity
- Industrial Stack Transducers and Overlapping Wave Frequency Technology
- Above-the-Tank Control Panel
- Can be Countersunk or Used on Countertop
- Operating Level Line to Prevent Underfilling
- Wider Snap-on Drain Line
- Capacity for Several Different Accessories
- 2 Year Warranty on Parts and Labor



9542922

\$999.95

SweepZone 200

L & R

- Uses a Special Cleaning Wave of +/- 2KHz Energy that Sweeps Back and Forth Through the Tank
- Provides Complete Cavitation
- 2.5 Year Warranty on Parts and Labor, 5 Year Warranty on Wrapping, 10 Year Warranty on Transducer



Digital Timer & Drain

8572230

\$619.95

Z7 Ultrasonic Cleaners with Timers

Darby Dental Supply

- Transistorized
- Can Be Used With L&R Accessories
- Built-In Timer
- Stainless Steel Cover And Tank (Basket Not Included)
- Large Capacity
- Solid State Circuitry
- Unique Electronic Circuitry Delivers More Power For Greater Cleaning Efficiency
- Contains Required Emi Filters
- Tank Dimensions: 9¾" X 5¾" X 4"
- 2½-Year Warranty—Parts And Labor



9537750

\$382.75

BioSonic Ultrasonic Cleaners

Coltene

UC 125

Unit with LCD Display, Tank Cover, Bottle of UC31 + Super Rust Inhibitor, Full Size FingerGuard Instrument Basket

9060399

\$809.95



UC 300 Unit, Tank Cover, BioSonic Disinfectant Ultrasonic Cleaner Concentrate UC38, Basket

9060374

\$1709.95



ULTRASONIC SCALERS

Biosonic Ultrasonic Scaler Systems

Coltene

- Operates with either 25kHz or 30kHz Inserts
- Accepts Most Competitive Magnetostrictive Inserts
- 115 Volt Model
- Water Intensity and Power Control Knobs Now Rotate in the Same Direction
- On-Demand Turbo Button
- 1 Year Warranty



9060302

\$1018.95

Bobcat Pro Ultrasonic Scaler

Dentsply Professional

- Delivers 25kHz of Power for Proven Scaling Efficiency and Reliability
- Operates all Cavitron 25K Inserts
- Use for Removal of Light to Heavy Calculus
- Equipped with an Ergonomically Designed, Seamless Plastic Shell
- Versatile Horizontal or Vertical Placement, Universal Control Graphics
- Easy to Accommodate in any Operatory
- 3.8" H x 8" W x 8" D
- 1 Year Warranty



8296080

\$863.95

Swerv3 Magnetostrictive Power Scaler

Hu-Friedy

- Delivers Superior Patient and Clinician Comfort
- Dual Power Modes and Touch-Pad Controls Allow for Accurate Power Adjustment and a Smooth Surface for Ease of Asepsis
- Ergonomic Handpiece
- Auto-Purge Function Helps Remove Air From Waterlines and Facilitates Waterline Maintenance
- 1 Year Warranty



8433890 25K

8433892 30K

\$2196.50

Air-Flow Master Piezon

Hu-Friedy

- Reliable, Fast and Productive for the Practice
- Stress-Free, Quiet and Comfortable
- Linear Oscillating Action Aligned with the Tooth Surface
- Maximum Protection for the Gums
- Designed to Deliver Complete Prophylaxis
- Readily Switch Between Standard and PERIO Working Modes



8430000

\$7719.95

Piezo Pilot

Vista Dental



4 Ultrasonic Tips with 4 Torque Wrenches, 3 Color-Matched Autoclavable Sleeves, Omni-Directional Foot Pedal, Quick-Disconnect Water Line, Replaceable in-Line Water Filter

P5 Handpiece with Hygiene Tips

9507660 Gray

9507662 Purple

9507664 Blue

9507666 Yellow

9507668 Blue-Green

9507704 Pink

P5 Handpiece with Endo Tips

9507670 Gray

9507672 Purple

9507674 Blue

9507676 Yellow

9507678 Blue-Green

9507706 Pink

\$1398.95

ULTRASONIC SCALERS

Cavitron Touch Package

Dentsply Professional

- Modern Touch Screen Interface
- Memory Presets
- Lighter Weight Cord
- Unique Steri-Mate 360 Handpiece
- 3 Year Warranty
- 3 Year Cavitron Care Maintenance Plan



3 Steri-Mate 360 Handpieces,
4 30K Ultrasonic Inserts
8291072

\$4279.95

See inside back cover for offers!

Cavitron Plus Package

Dentsply Professional

- Designed for Use in General Periodontal Treatments and Other Areas of Operative Dentistry
- Tap-On Technology
- Additional Power Option Single-Push Turbo Mode
- Finer Water Control
- Activates Scaling with a Single Tap of the Foot Pedal
- 3 Year Warranty
- 2 Year Cavitron Care Maintenance Plan



Cavitron Plus Ultrasonic Scaler, Steri-Mate Sterilizable Detachable Handpiece, Tap-On Technology Wireless Foot Pedal, Fitgrip 10s Insert 82

8291062

\$3049.95

Cavitron Select SPS Package

Dentsply Professional

- Sleek Design and Compact Size
- SPS Technology (Sustained Performance System)
- Steri-Mate Handpiece is Detachable and Autoclavable
- Reduce Cross Contamination for Enhanced Infection Control
- Water Lavage Control Located on the Handpiece
- Easy to Use & Store
- 3 Year Warranty



Cavitron Select SPS Ultrasonic Scaler, Steri-Mate Sterilizable Detachable Handpiece, Foot Control, FitGrip 10S Insert

8291064

\$2219.95

VACUUM SYSTEMS

Perfection Dry Vacuum

Acme Dental MFG

- Quiet Operation
- Shipped Completely Assembled
- Cyclonic Separation of the Evacuated Waste
- No Water Needed
- No Vents or Lubrication
- Non-Corrosive Tank
- Built for Endurance



8960022 PF-1, Single Head, 1-6 User, 35"x27"x21" **\$4999.95***

8960024 PF-2, Dual Head, 6-12 User, 41"x27"x21" **\$5999.95***

Evolution Vacuum

Acme Dental MFG

- Dual Muffler Exhaust
- Easy to Install
- No Lubrication
- Corrosion Resistant Materials
- No Concern of Noise
- Low Power Consumption
- No Tank Needed



8960016 PF-4, Single, 1-6 User, 26"x13"x17" **\$8349.95***

8960018 PF-4D, Dual, 6-12 User, 26"x33"x17" **\$12,849.95***

Vacuum on Demand

Acme Dental MFG

- Cyclonic Separation of the Evacuated Waste
- Virtually Maintenance Free
- Quiet Operation
- Non-Corrosive Tank
- Shipped Completely Assembled
- No Water Needed



8960020 PF-3, 1-10 User, 35"x27"x21" **\$5139.95***

*Installation & Shipping Additional

VACUUM SYSTEMS

Eco-Vac Dry Vacuum Systems

Tech West Inc.

- Saves Over 50% on Electricity Costs When Compared to Similar Vacuum Pumps
- Zero Water Usage Saves Water and Sewage Costs
- Dry Turbine Section uses No Oil
- Eliminates Maintenance Costs and Keeps the Oil Vapors From the Equipment Room and Environment
- Integrated Amalgam Separator to Remove Mercury Waste (optional)
- Very Quiet Operation at Only 62 Decibels
- 5 Year Warranty

4455000 1 HD x 1 HP 2 User

\$6079.95*



Whirlwind Liquid Ring Vacuum

Tech West Inc.

- Dynamically Balanced Impellers
- Large Solids Collectors with Clear Bowls
- Energy Efficient Motors with Cap-Start, Cap-Run
- Air Water Separators for All Pumps
- Water Recyclers for All Vacuum Pumps
- 5 Year Warranty on Motor Shaft
- 4 Years Warranty on Brass Components
- 3 Year Warranty on All Other Components

2HD x 1HP 4 User

4455002

\$3529.95*



*Installation & Shipping Additional

X-RAY PROCESSING EQUIPMENT

810 Basic Automatic Film Processor Dent-X

- Processing Cycles: Archival Film in 4½ Minutes; Endo Wet Reading in 2 Minutes.
- Quick and Easy to Clean
- Water requirements: 1½ gal/min. (only when Processing)
- Tank Capacities: Developer and Fixer Solution Trays Hold 3 qt. each
- 30½" L x 17½" W x 14½" H
- Accommodates all Film Sizes up to 8" x 10"



9513868
\$6099.95

810 Plus Automatic Film Processor Dent-X

- Twin Helix Transport Drive Provides True Track Film Transport for Confident Reliability
- Medical Grade Chain Drive Less Friction, Less Torque, Longer Life and Reliability
- Micro Opto Film Sensing for Accurate, Cost-Effective Chemical Replenishment
- 30½" L x 17½" W x 14½" H



9513872
\$6599.95

Chairside Darkroom Dentsply Rinn

- Processes in Less than a Minute
- Process Film Chairside
- 11⅞" x 17¼" x 12"



8850500
\$719.95

Insta-Veloper Portable Darkroom Microcopy

- Oyster Gray Finish
- Easy See-Through Amber Light Panel
- Recessed Base Holds Four Processing Containers with Hermetic-Sealing Solution Lids
- Easy-To-Clean Detachable Cover
- 15¾" x 10½" x 10"



9515002
\$424.25

Intra-X Velopex

- Dry-To-Dry Processed in 5 Minutes; Wet Endodontic in Approximately 2½ Minutes
- Continuous Automatic Standby
- Unique Film Transport System
- Deep Processing Tanks
- No Darkroom Required
- Daylight Loader Optional
- Dimensions: 11½" W x 12½" H



Shown with optional
daylight loader

9325900
\$1699.95

Xtender Film Processor Velopex

- Advanced X-Ray Processor for Extraoral and Intraoral Film
- Film Feed Speed 18½" Per Minute
- Dry-To-Dry Processed in Approximately 5 Minutes; Wet 2½ Minutes
- Without Daylight Loader: 20" W x 13.5"H x 18.5" D (510 x 340 x 470 mm)
- With Daylight Loader: 20" W x 13.5" H x 29" D (510 x 340 x 740 mm)



9545864 (Xtender)
\$4199.95

Daylight Loader
9545866 (I/MAC9300A)
\$569.95

Film Processors with World-Class Dependability

Air Techniques manufactures exceptional film processors, allowing you to achieve more accurate chemistry formulations, temperatures and replenishment rates.



A/T2000 XR

- Processes every dental film size: Panoramic, Cephalometric, TMJ, Occlusal and all Intraorals.
- Automatically controlled processing time, chemistry temperature and replenishment rates.
- Each film is fully developed and fixed.
- Electricity use, water consumption and system wear are reduced.
- Compliance with local codes.
- Advanced automation saves time.
- Archival radiographs are available in just over 5 minutes.
- Endo Speed setting takes only 2 ½ minutes

9462200 **\$6849.95**

PERI-PRO III

- Processes all intraoral film sizes 0, 1, 2, 3 and 4.
- An electronically controlled heating system maintains an optimum 75° F chemistry temperature.
- Operates at room temperature and films are processed in 7 ½ minutes. 5 minutes for archival film.
- Film surfaces are never touched.
- Up to 8 films may be loaded.
- Speed combined with space-efficiency.



Shown with optional Daylight Loader.

9462110 Peri Pro III **\$2499.95**
9462112 Daylight Loader **\$289.95**

To learn more about our wide variety of award winning dental products, visit www.airtechniques.com or contact your local Darby Dental Supply Representative.

IMAGING | UTILITY ROOM | MERCHANDISE

AIR
TECHNIQUES equipped for life™

Cavitron.

Effortless rotation is now within reach

Introducing Cavitron Touch™ with Steri-Mate® 360—a reimagined unit that offers unprecedented¹ comfort and control throughout every procedure, featuring:

- Ergonomic design with lightweight cable and fully rotating Steri-Mate® 360 handpiece allows free flowing movement and access within the oral cavity
- An innovative touchscreen interface for ease of use



Available exclusively with **Cavitron Touch™**
and **Cavitron Integrated Built-In Systems²**

Steri-Mate® 360
Innovation in rotation

BUY
GET

Buy 1 Cavitron Touch™ Unit,
Get a \$300 Rebate! (PNP15030)

BUY
GET

Buy 1 Cavitron Touch™ Package,
Get a \$400 Rebate! (PNP15035)

For more information or to request a demo, call
1.800.989.8826 or visit www.cavitronsyste.ms.com

Reference: 1. New technology compared to current Cavitron systems
Reference: 2. Steri-Mate® 360 available on G139 Integrated unit only

DENTSPLY
PROFESSIONAL

© 2015 DENTSPLY International

Cavitron® and Steri-Mate® are registered trademarks and Cavitron Touch™ is a trademark of DENTSPLY International and/or its subsidiaries.
CAV27-0715-2

Cavitron
touch™



There's only one Cavitron®.

PROGRAM RULES: Free goods must be of equal or lesser value than least expensive product purchased. Purchase must be made from Darby Dental between 10/1/15 and 12/31/15. Invoices must be received no later than 1/31/16 to claim free goods. Purchase must be made on ONE (1) invoice. To receive your free goods, submit invoice noting promotional code(s) AND FREE GOODS REQUESTED by scanning the invoice and emailing it to dpdredemptions@dentsply.com or fax invoice to 1-800-278-4344. Incomplete submissions will not be processed. Limit 5 redemptions per Doctor. These offers may not be combined with any other DENTSPLY offers or contract agreements. Free goods fulfilled through DENTSPLY. Allow 4-6 weeks for delivery. Offers valid in the 50 United States only. Data on file. ©2015 DENTSPLY International. All rights reserved.

think equipment... think darby.com



CONVERGENTDENTAL

SOLEA

THE DIFFERENCE IS HUGE

Solea is the first CO2 laser system ever cleared by the FDA for hard and soft tissue ablation. It's fast, precise, virtually noiseless and anesthesia-free for the vast majority of procedures. Patients love the experience. Dentists love the dramatically improved efficiency. This is the laser you've been waiting for!



DARBY DENTAL SUPPLY, LLC

Call 888.395.1341
or visit darby.com/equipment

