

Installation Manual on Continuous ink supply system (CISS) For printer EPSON ME Office 600F/ TX 600F/ TX 300F/ Nx300

Thank you for using the “INKSYSTEM” Continuous ink supply system. It is the best device for an inkjet printer, and it will definitely decrease your printing costs. Before using this system, please read this manual carefully. The pictures in this manual may be different with the real ones. Here just for your reference.

I. Inspection & Unpacking

1. Accessories

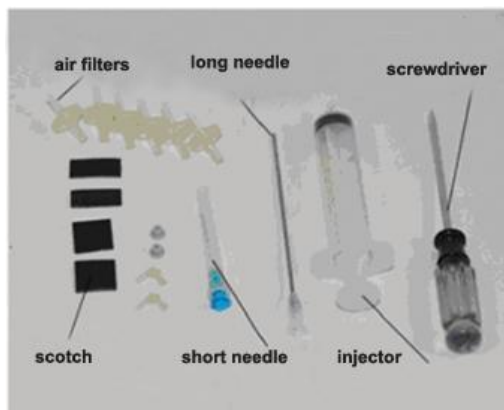
1) Continuous ink supply system	1
2) Air Filter	1
3) Sponge	1
4) Injector	1
5) Long needle	1
6) Short needle	1
8) Installation Manual	1
9) Certificate on free installation.....	1



Pic. 1-1



Pic. 1-2



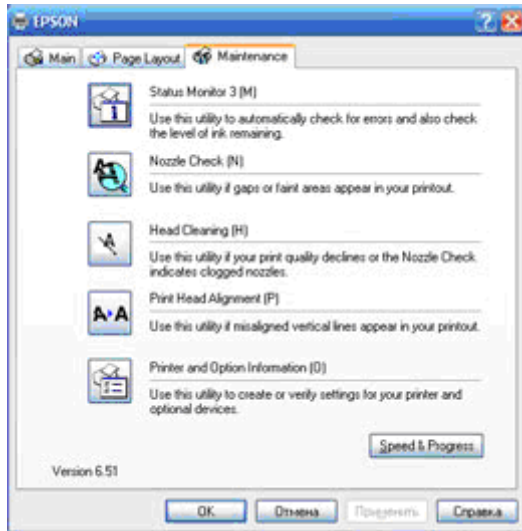
Pic. 1-3

2. Inspection before installation

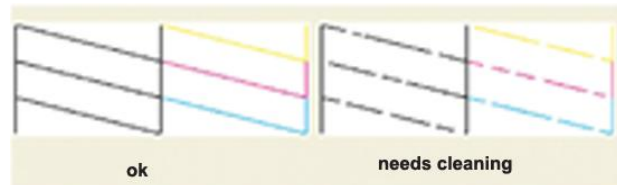
- A. Check whether all the accessories are present.
- B. Check whether the system is retrieved normally or too much air is remained in the connecting tubes (length over 20cm).

II. Printer test

1. Check whether printer conditions are present.
2. Enter nozzle test option (2-1), print nozzle test sheet to see whether nozzle is normal or not (2-2, 2-3).



Pic. 2-1



Pic. 2-2, 2-3

3. If printer is alright, please print a picture to see the result.
Note: This system will not cause any damage on your printer.

III. Installation Procedures

1. Make the system ready

Put this system on the right side of printer. Tidy up ink tube (3-1-1), pull air plugs out and keep them well for next use (3-1-2), install air filters (5pcs) (put them with the bigger side).



Pic. 3-1-1



Pic. 3-1-2

2. Move out cartridge holder

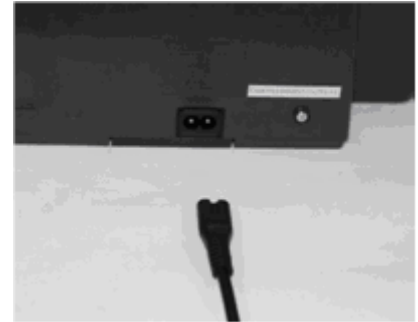
Choose Main menu (3-2-1)->maintenance->cartridge change->cartridge change tools->next step->next step->confirm, then you can move out the cartridge holder, pressing button (3-2-2), plug off power source(3-2-3).



Pic. 3-2-1



Pic. 3-2-2



Pic. 3-2-3

3. Take cartridge cover off

Take screwdriver out, insert in (3-3-1) position, do like (3-3-2) to shake the screwdriver, lift cartridge cover and take it off (3-3-3).



Pic. 3-3-1



Pic. 3-3-2



Pic. 3-3-3

4 Install CISS Cartridges

Take off original cartridge (3-4-1), move cartridge holder to the left side (3-4-2), pass cartridge through printer. Move cartridge holder to cartridge-change position. Install CISS special cartridge into printer according to printer indication and press cartridge to the right place (3-4-3). Move button chip to the right position or cartridge can not be recognized.



Pic. 3-4-1



Pic. 3-4-2



Pic. 3-4-3

5. Check tube length

Move cartridge holder to the left side (3-5-1), then right side (3-5-2) and check whether ink tube is too long or too short. Move cartridge holder to the cartridge-changing place and check whether Ink tube will fall on the paper board. Generally, we have adjusted ink tube to the right size before shipment (If it is too long or too short, please double check before printing).



Pic. 3-5-1



Pic. 3-5-2

6. Adjust tube length

If step 6 is ok, then there is no need to go through this step.

If the tube length is too short then lengthen (3-6-1) it, if too long then shorten (3-6-2). If the tube falls down, you need adjust the angle of sticker to prevent falling.



Pic. 3-6-1



Pic. 3-6-2

7. Fix the other side of ink tube

Attach sticker to position (3-7-1). When printer cover close (3-7-1) or paper support close, pay attention, do not to let them crush the ink tube.



Pic. 3-7-1

8. Ready for printing

Plug power wire on (3-8-1), turn printer on (3-8-2). Check whether printer and ink tube can run normally or cannot. Close printer cover and check whether it is strange noise while printing.



Pic. 3-8-1



Pic. 3-8-2

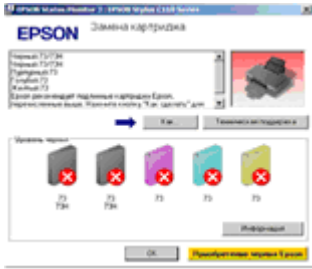
9. Test printer nozzle

Enter printer nozzle inspection option, print nozzle test sheet. If it is normal, then can start using normally. If line is missing, please do the nozzle cleaning. If just single color missing (maybe there is air in nozzle) or if it is still a little line missing after cleaning, please let printer stay turned off for one hour or more. Please contact your local distributor if you still have problem.

IV. Ink Amount Reset

It requires to change cartridges while printing (4-1-1) and ink light flash (4-1-2). Press ink button to move out cartridge holder. Press chip reset button for 3 seconds (4-1-3), repress ink button to move back cartridge holder, then ink amount shows 99% again. Redo nozzle inspection and printer can run normally if it is alright. (Black and other colors can be handled by the same method).

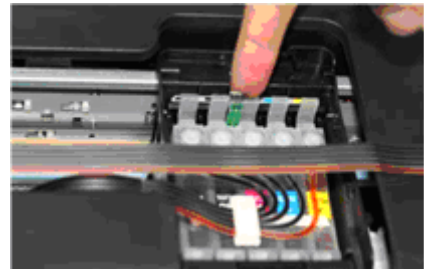
Note: Distinguish two kinds of chips (4-1-4). The manipulation is the same. The difference is that the chips with transferred switch should be switched downwards (4-1-5), otherwise, chips can not be recognized.



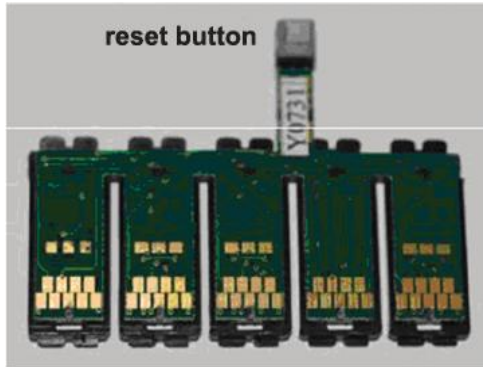
Pic. 4-1-1



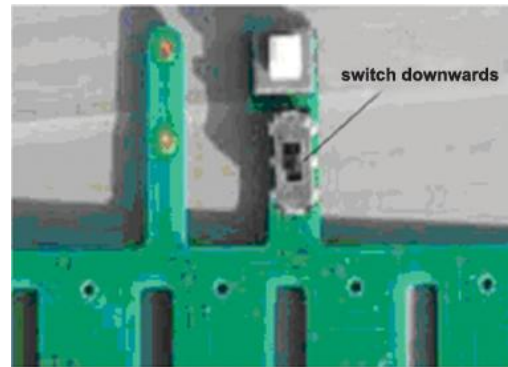
Pic. 4-1-2



Pic. 4-1-3



Pic. 4-1-4



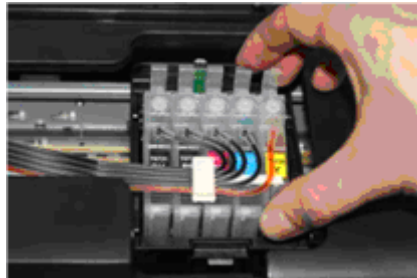
Pic. 4-1-5

V. Removing used continuous ink supply system

Replace air filters with air plugs (5-1-1). Move out cartridge holder and take the rack off. Take the cartridges out (5-1-2) and place the cartridges on the tissue with the ink flow nozzle downwards, and let the tissue at the same level with the system ink tank (5-1-3).



Pic. 5-1-1



Pic. 5-1-2



Pic. 5-1-3

VI. Refill ink

During printing, if you found out that the ink level in the tank is below the red line, please add ink according to the methods.

VII. Check air balance tube

During printing, if you find some abnormal cases, such as bad output, ink drip out on paper, then you need to check the air balance tube to see if exist ink. If yes, please do according to the manual of "ink pump out from balance tube".

VIII. Warnings

1. During printing, please do not take cartridges over than the printer. Please keep ink tank and printer in the same level.
2. During printing, do not inverse, lift up or lower ink tanks.
3. Please do not block up ink tanks for curiosity or for fear of less ink
4. Use CISS at clean environment and within the temperature range 15-35 degrees.
5. Please use high-quality ink to prolong and to increase printing quality.
6. During shipment or storage, please do not turn the system over and always have the holes sealed with plugs, to prevent ink leakage.
7. Please do not shake cartridges to avoid leaking.
8. Please do not unplug joint elbow, do not tear off adhesive tape seal that at the bottom of cartridge, do not touch the IC chips that sideways.

IX. Product Warranty

INKSYSTEM warrants its products to be free from defects in material or workmanship. Rarely the equipment partly or completely fails within the warranty period. In these cases we do everything possible to ensure that our customers are satisfied with the purchase.

The INKSYSTEM CISS installation is free in any of the representative offices.

The warranty repairs are done quickly, with good quality and for free. The warranty duration is 12 months from the date of retail sale. Every product has a Warranty Certificate. The transportation of the failed product is provided by its owner.

Please note that the ink and the photo paper are expendable materials and there can be no returning of unsealed ink tanks and photo paper packages. When defects are found by the service managers, a replacement for a new product is performed.

Please adhere to the following points to receive a warranty service as soon as possible:

When accepting the product check if the warranty certificate is filled in correctly.

- Keep the original receipt that contains the date of purchase information.
- Adhere to operating conditions that are provided in the User's Manual, or on the web-page of the specific product.
- Try to avoid mechanical damages when operating the product: chippings, dents, fractures, scratches, etc.
- Demonstrate the failed device to the service center managers (the warranty repair or replacement can be provided only upon the failed product availability).
- Ensure that the service center gets the product with its full set: descriptions, chips, tubes, etc.

We cannot provide a warranty repair under several conditions:

- If the warranty certificate is wrongly filled in.
- If the device has mechanical damages: chippings, dents, fractures, scratches, etc.

