



4-CHANNEL RADIO CONTROLLED VIDEO QUAD-COPTER

FEATURING:

1. Four-Rotor design allows great speed and maneuverability for both Indoor and Outdoor use.
2. Built-in 6-axis Gyro ensures excellent stability.
3. Modular design for increased ease of maintenance.
4. 360-degree 3-dimensional stunt and tumbling function

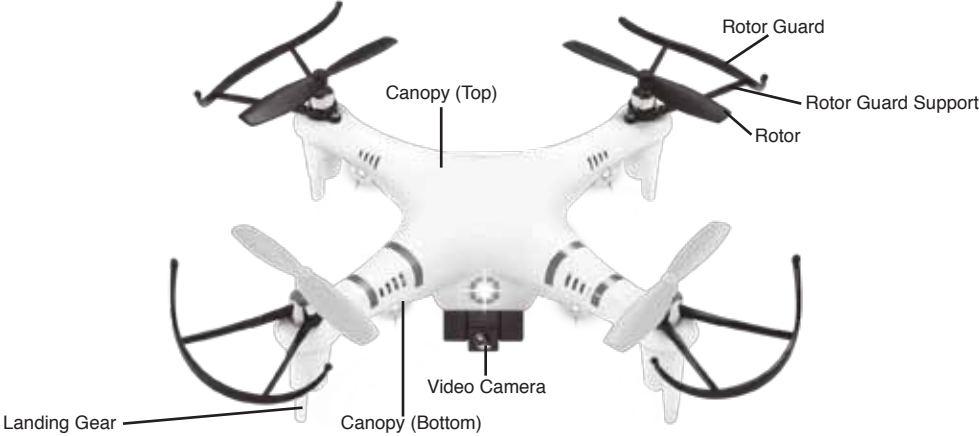
The materials and specifications stated in this instruction manual are for reference only.

PROTOCOL

Thank you for your purchase of Protocol's **VideoDrone 4 Channel RC Video Quad-Copter**. You are about to experience the best of what remote control flight has to offer. We strongly recommend that you take the time to read this manual thoroughly. It contains many tips and instructions on how to get the most of this aircraft and maintain it for long life.

As with any aircraft, this is a precision flying machine. Treat it well and enjoy all the fun it has to offer, flight after flight.

SCHEMATIC



SAFETY AND PRECAUTIONS

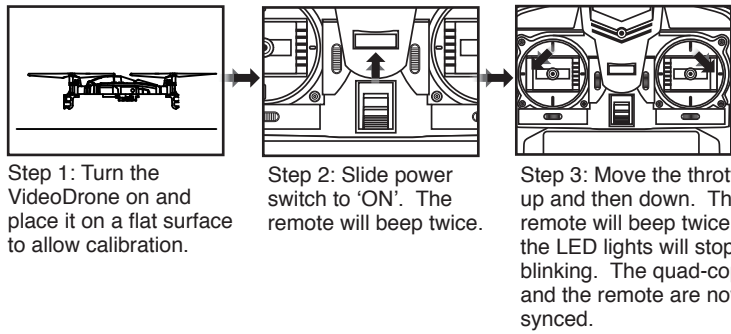
1. Keep small parts out of reach of children to avoid accidents.
2. The quad-copter is powerful and fast; accelerate gently to avoid damage and accidents.
3. After flying, disconnect the battery.
4. Keep the battery away from heat sources and / or fire.
5. Keep the quad-copter at a distance of at least 2 meters from yourself, others, and obstacles to prevent damage.
6. Children should operate the quad-copter only under adult supervision.
7. The remote controller batteries can not be recharged. Do not mix new batteries with old batteries or mix batteries of different types.
8. Always turn off both the transmitter and quad-copter when not in use.
9. Never attempt to short-circuit the battery terminals or the quad-copter.

-1-

MAINTENANCE

1. Clean the quad-copter with a clean, soft cloth.
2. Do not leave the quad-copter in the sun or a bright light.
3. Do not expose quad-copter or its electronic parts to moisture or water.
4. Regularly check connections and other parts.
5. If you find any defective part, stop flying until the repair.

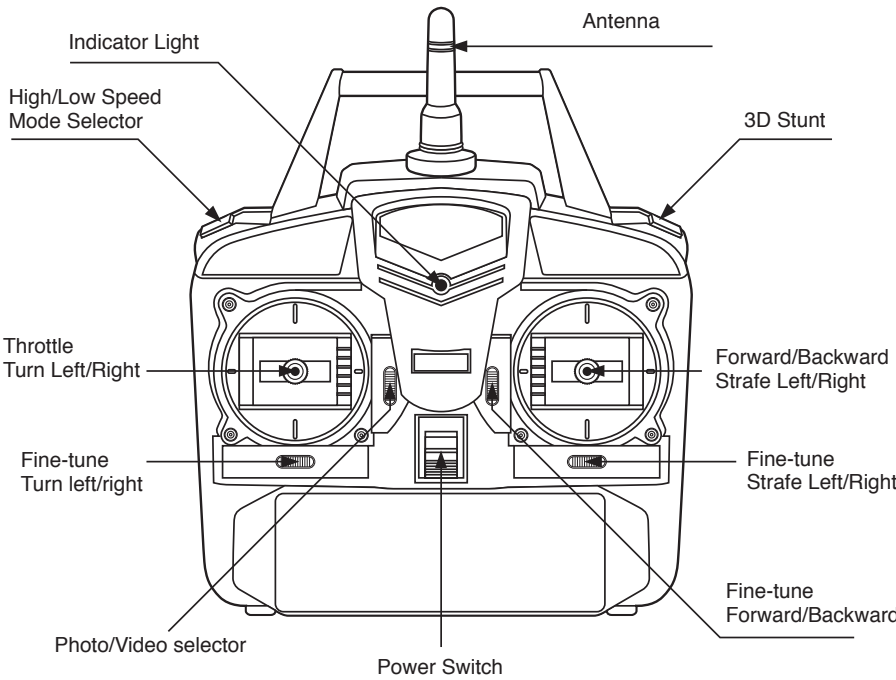
FLYING THE QUAD-COPTER



NOTE

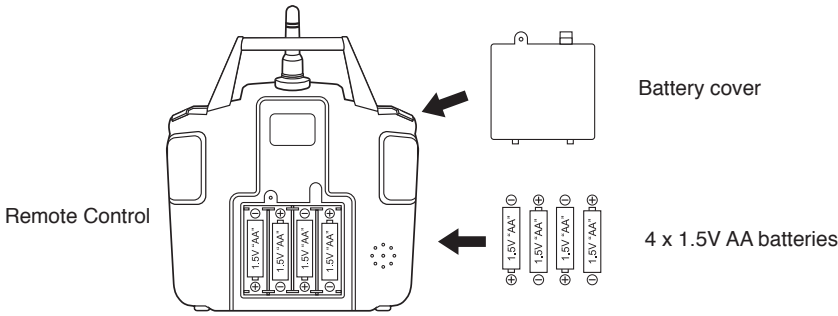
1. If the VideoDrone and the remote do not sync after following the checklist, reverse the first two steps of the process. Turn both the VideoDrone and remote off. Then, turn on the remote first and then turn on the VideoDrone. Follow with Step 3.
2. Turn on the controller; if, after 30 seconds, it has not recognized the helicopter, turn off the controller to retry synchronization.
3. If quad-copter's LED blinks slowly, it means that it has not recognized the controller; please restart pre-flight procedure.
4. If the VideoDrone is unsteady in flight, it may not have been able to calibrate horizontally. Power down both vehicle and remote and restart pre-flight procedure.

ILLUSTRATION ON QUAD-COPTER CONTROLLER



BATTERY INSTALLATION

Remote Control



Unscrew and remove battery cover from controller, insert 4 'AA' batteries, noting polarity indicators. Replace battery cover.

1. Install batteries carefully.
2. Do not mix old and new batteries.
3. Do not mix different types of batteries.

-3-

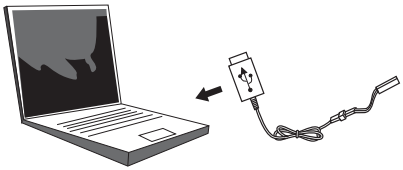
Charging the Quad-Copter's On-Board Battery

Make sure the VideoDrone is turned off. Connect the aircraft to the supplied USB charging cable. Insert the USB end of the charging cable into the USB port of any computer (or a USB port power adapter) to begin charging aircraft. The red LED indicator will turn off during charging and will go on when the charging cycle has completed.

50 minutes of charging yields 5 minutes of flight.

1. When using a computer USB port as power source, remember to unplug the USB cable prior to shutting down computer.
2. Take care to insert charging cable in correct orientation as reversing the polarity may lead to malfunction.

*VideoDrone uses a 3.7V 350MA Li Po Battery



CAUTION WHEN CHARGING

1. When charging, place product on a dry, well-ventilated surface and keep away from heat sources.
2. Always use adult supervision while charging.
3. As battery temperature is high immediately after flight, charge after cooling down for higher efficiency.
4. Do not strike or subject battery to hard impacts or sharp surfaces.
5. Do not use any other charger than that which is supplied with this item.
6. Do not use or leave battery near a heat source such as a fire or space heater; exposure to heat may result in reduced performance or in some cases dangerous conditions.
7. If battery is left in charging state for an extended period of time after being fully charged, the battery may automatically discharge.
8. Never leave the battery unattended during charging.

BATTERY REPAIR & MAINTENANCE

1. Do not immerse or submerge battery in water; store in a cool, dry location.
2. In order to increase battery longevity, avoid repeat charging and excessive discharging.
3. Charging battery approximately 55% capacity prior to long-term storage.
4. Do not disassemble battery.

INSTALL BLADE PROTECTION FRAME



FIG. 1

Install the blade protection frame to every corner and tighten the screws (Figure 1).

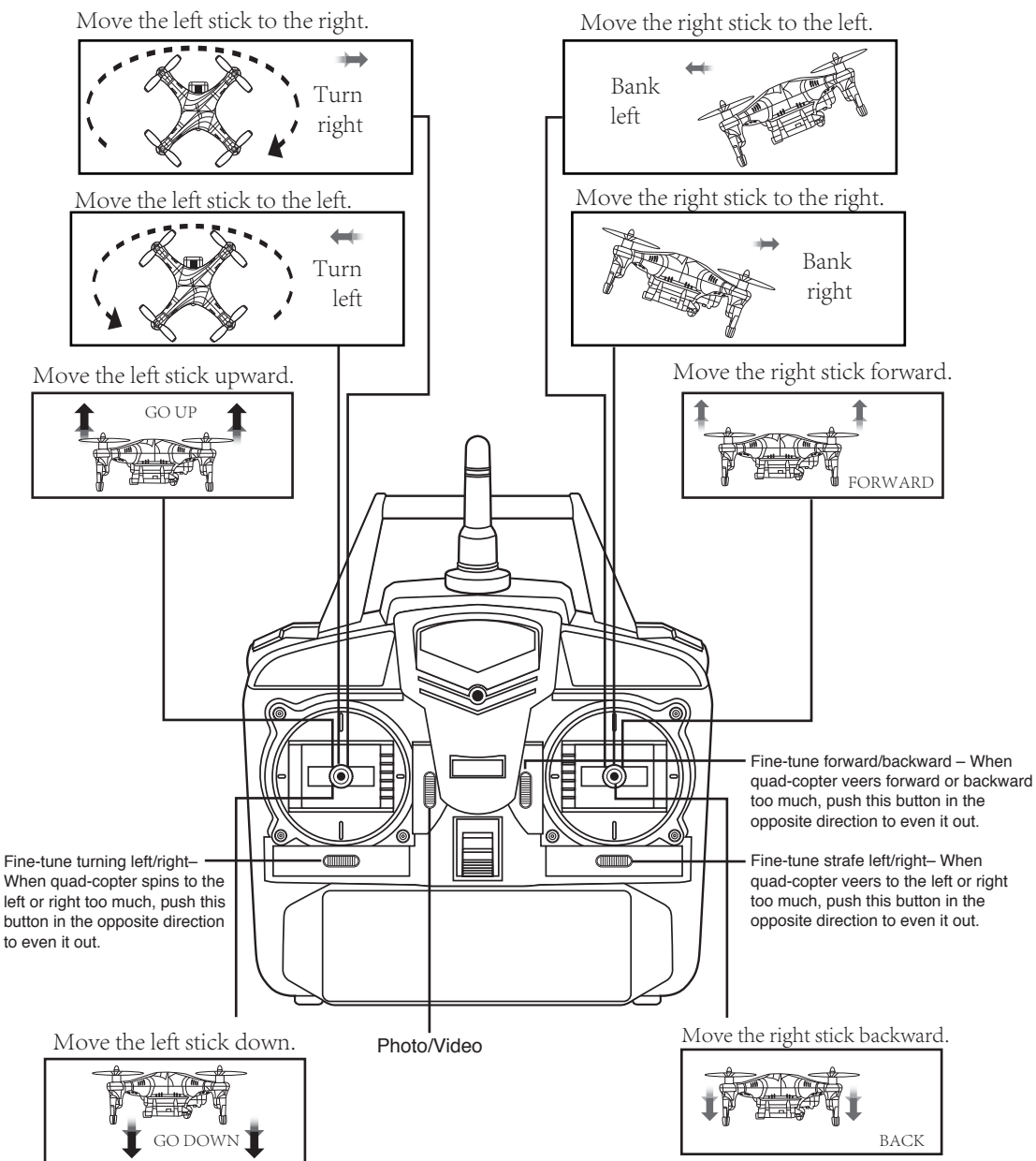
NOTE: If the quad-copter crashes, double check to make sure the blade protection frame is not loose. If it is, re-tighten before flying.

HIGH-LOW SPEED MODES

The VideoDrone features 2 speed modes. Low speed is for beginners and high speed is for advance users. Press the speed mode button to adjust speed.

-4-

VIDEODRONE CONTROL



Note: While fine-tuning flight characteristics, maintain constant position and altitude.

TIPS ON 3D STUNT & TUMBLING OPERATION

Once you are familiar with the basics of quad-copter flight, you can try some advanced maneuvers! At a height of at least 10 feet, press the STUNT button, then move the right stick in whichever direction desired to perform a 360 degree flip in that direction.

MODE	ILLUSTRATION	MODE	ILLUSTRATION
Right Flip		Left Flip	
Front Flip		Rear Flip	

TOSS N' LAUNCH

Thanks to the 6-axis gyro, you can toss the quad-copter and push the throttle up. It will automatically level out and hover smoothly in the sky.

PHOTOGRAPHY/VIDEO INSTRUCTIONS

1. Make sure SD card is inserted into the camera.
2. Turn the quad-copter on. The blue light of the camera will flash and then become steady. If the red indicator on the camera is continuously flashing, it means the SD card is not in the camera. Please insert the SD card and the red indicator will turn off.

Shooting Photos and Video:

1. Turn on the transmitter and pull the throttle up and down to connect the quad-copter and transmitter.
2. Photo: Push the "Photo/Video Selector" down and the camera will take a photo after a beep from the transmitter. The red indicator will flash once as it's taking the picture.
3. Video: Push the "Photo/Video Selector" up and the camera will begin to record after a beep from the transmitter. The red indicator will stay on while recording video. Push the "Photo/Video Selector" button up again and the camera will stop recording. The transmitter will beep and the red indicator will turn off.
4. To view and/or remove recordings/images, remove the memory card from the side of the camera by pushing in the card and then allowing it to spring out enough to remove the card out of the slot.
5. Insert the memory card into the slot on the back of the provided USB adapter. If your computer features a memory card reader that fits this memory card, then you do not need to use the USB adapter.
6. Place the USB adapter into the USB port of your computer. If you are using Windows, the USB will come up as the "E" drive. If you are using OS, then the USB will come up as "Untitled".
7. Open the DCIM folder and then open the DSCIM folder to access the .AVI or JPEG files.
8. .AVI movies can be played in several different formats including Quicktime, Windows Media Player, and RealPlayer.

-6-

PROTOCOL