



C7350/C7550



Mac Technical Reference

59366101

OKI®

Copyright Information

Copyright © 2007 by Oki Data. All Rights Reserved

Document Information

C7350n/7550n Mac Technical Reference

P/N 59366101

Revision 2.0

March, 2007

Disclaimer

Every effort has been made to ensure that the information in this document is complete, accurate, and up-to-date. The manufacturer assumes no responsibility for the results of errors beyond its control. The manufacturer also cannot guarantee that changes in software and equipment made by other manufacturers and referred to in this guide will not affect the applicability of the information in it. Mention of software products manufactured by other companies does not necessarily constitute endorsement by the manufacturer .

While all reasonable efforts have been made to make this document as accurate and helpful as possible, we make no warranty of any kind, expressed or implied, as to the accuracy or completeness of the information contained herein.

The most up-to-date drivers and manuals are available from the web site:

<http://www.okiprintingsolutions.com>

Trademark Information

Oki and Microline are registered trademarks of Oki Electric Industry Company Ltd.

Apple, Macintosh and Mac OS are registered trademarks of Apple Computers Inc.

Hewlett-Packard, HP, and LaserJet are registered trademarks of Hewlett-Packard Company.

Microsoft, MS-DOS and Windows are either registered trademarks or trademarks of Microsoft Corporation in the United States and/or other countries.

Other product names and brand names are registered trademarks or trademarks of their proprietors.

Regulatory Information



This product complies with the requirements of the Council Directives 89/336/EEC (EMC) and 73/23/EEC (LVD) as amended where applicable, on the approximation of the laws of the member states relating to Electromagnetic Compatibility, Low Voltage and Radio & Telecommunications Terminal Equipment.

Contents

Document Information	2
Disclaimer.....	2
Trademark Information	2
Regulatory Information	2
Notes, Cautions, etc.	5
Macintosh OS 9.x	6
Printer Driver	6
Setting Up the Printer Driver	6
Operation	8
Color Print Matching	9
Choosing a Color Matching Method	12
Color Option	14
Job Option	21
Job Type Plug-in	25
Printing Multiple Pages on One Sheet	35
Duplex Printing (Printing on Both Sides of the Paper)	36
Collating.....	38
Utilities.....	40
General Information.....	40
Installing the Utilities.....	41
Fonts Downloader.....	42
Color Swatch Utility	43
Storage Device Manager.....	45
Macintosh OS 10.1 & 10.2	53
Printer Driver	53
Operation	54
Color Print Matching	55
Choosing a Color Matching Method	59
Driver Options	61
Printing Multiple Pages on One Sheet	71
Duplex Printing (Printing on Both Sides of the Paper)	72
Collating.....	73
Utilities.....	74
Macintosh OS 10.3.....	75
Printer Driver	75
Operation	76
Color Print Matching	77

Choosing a Color Matching Method	80
Driver Options	82
Printing Multiple Pages on One Sheet (N-up Printing)	91
Duplex Printing (Printing on Both Sides of the Paper)	92
Collating.....	94
Utilities.....	95

Notes, Cautions, etc.

NOTE

A note appears in this manual like this. A note provides additional information to supplement the main text.

CAUTION!

A caution appears in this manual like this. A caution provides additional information which, if ignored, may result in equipment malfunction or damage.

WARNING!

A warning appears in this manual like this. A warning provides additional information which, if ignored, may result in a risk of personal injury.

Important!

An Important box appears in the manual like this. An important box provides information which can impact the usability of that particular printer function.

Macintosh OS 9.x

Printer Driver

This section describes how to change the PPD file and how to activate optional accessories in the printer driver, once you have installed them in the printer.

See your printed *Software Installation Guide* for information on installing printer drivers.

Setting Up the Printer Driver

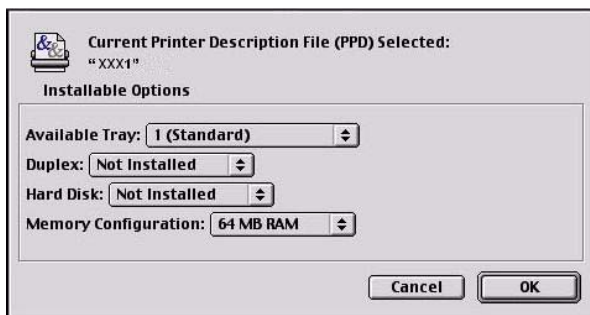
1. From the Apple menu, select **Chooser**.
2. Double click **LaserWriter8**.
3. Select the name of the new icon (e.g., OKI 9043589) which appeared after you installed the driver, then click **Setup**.

Select the PPD

4. Click **Select PPD**.
5. Click **Printing** → **Change Setup....**
6. Select your printer model from the list, then click **Open**.

Activate Installed Options in the Driver

7. Click **Configure**



8. Optional Trays: To engage optional trays, change the setting for **Available Tray** to **2** or **3** depending on how many trays you have installed.
9. Duplex Unit: To engage the Duplex Unit, change the setting to **Installed**.
10. Hard Disk Drive: To engage the hard disk drive, change the setting to **Installed**.
11. DIMMs: To engage additional memory, set **Memory Configuration** to the new total value of memory installed (standard memory + any installed optional DIMM memory).
12. When done, click **OK**.
13. Click **OK**.
14. Close Chooser.

Macintosh OS 9.x

Operation

This section explains how to change the printer's operation for specific print jobs directly from within an application.

Most applications allow the printer properties to be accessed from within the document print dialog.

This section will only detail options as they apply to the LaserWriter® 8 driver. Refer to manufacturer's guidelines regarding other driver operations, for example the AdobePS™ driver.

Color Print Matching

The install utility provides a color matching profile for your printer, as well as **Color Option** utility in the print driver. In general, using the **Auto** settings will provide reasonable default settings that produce good results for most documents.

Many applications have their own color settings, and these may override the settings in the printer driver. Please refer to the documentation for your software application for details on how that particular program's color management functions.

If you wish to manually adjust the color settings in your printer driver, please be aware that *color reproduction is a complex topic, and there are many factors to take into consideration*. Some of the most important factors are listed below.

Differences between the Range of Colors a Monitor or Printer Can Reproduce

- Neither a printer nor a monitor is capable of reproducing the full range of colors visible to the human eye. Each device is restricted to a certain range of colors. In addition to this, a printer cannot reproduce all of the colors displayed on a monitor, and vice versa.
- Both devices use very different technologies to represent color. A monitor uses Red, Green and Blue (RGB) phosphors (or LCDs), a printer uses Cyan, Magenta, Yellow and Black (CMYK) toner or ink.
- A monitor can display very vivid colors such as intense reds and blues and these cannot be easily produced on any printer using toner or ink. Similarly, there are certain colors, (some yellows for example), that can be printed, but cannot be displayed accurately on a monitor. This disparity between monitors and printers is often the main reason that printed colors do not match the colors displayed on screen.

Viewing Conditions

A document can look very different under various lighting conditions. For example, the colors may look different when viewed standing next to a sunlit window, compared to how they look under standard office fluorescent lighting.

Printer Driver Color Settings

The driver settings for Manual color can change the appearance of a document. There are several options available to help match the printed colors with those displayed on screen. These options are explained in subsequent sections of this User Manual.

To access the color matching options in the driver discussed below:

1. Access the printer settings page via the Print dialog from any application (usually accessed via **File** → **Print**).
2. Click the **General** drop down menu and select **Color Option**.

Monitor Settings

The brightness and contrast controls on your monitor can change how your document looks on-screen. Additionally, your monitor color temperature influences how “warm” or “cool” the colors look.

NOTE

Several of the Color Matching options make reference to your monitor's Color Temperature. Many modern monitors allow the color temperature to be adjusted using the monitor's control panel.

There are several settings found on a typical monitor:

- **5000k***

Warmest; yellowish lighting, typically used in graphics arts environments.

- **6500k**

Cooler; approximates daylight conditions.

- **9300k**

Cool; the default setting for many monitors and television sets.

*k = degrees Kelvin, a measurement of temperature

How Your Software Application Displays Color

Some graphics applications such as Macromedia Freehand® or Adobe® Photoshop® may display color differently from “office” applications such as Microsoft® Word. Please see your application's online help or user manual for more information.

Paper Type

The type of paper used can also significantly affect the printed color. For example, a printout on recycled paper can look duller than one on specially formulated glossy paper.

Choosing a Color Matching Method

There is no one way to achieve a good match between the document displayed on your monitor and its printed equivalent. There are many factors involved in achieving accurate and reproducible color.

However, the following guidelines may help in achieving good color output from your printer. There are several suggested methods, depending on the type of document you are printing.

NOTE

These suggestions are for guidance only. Your results may vary depending on the application from which you are printing. Some applications will override any color matching settings in the printer driver without warning.

RGB or CMYK?

The guidelines for choosing a color matching method makes distinctions between Red, Green, Blue (RGB) and Cyan, Magenta, Yellow, Black (CMYK).

Generally, most documents you print will be in RGB format. This is the most common, and, if you do not know your document's color mode, assume that it is RGB.

Typically CMYK documents are only supported in professional Desktop Publishing and Graphics applications.

Matching Photographic Images

RGB Only

The standard Color Matching (found in the printer driver under Color Matching) is a generally a good choice. Select a matching method appropriate to your monitor.

RGB or CMYK

If you are printing photographic images from a graphics application such as Adobe Photoshop, you may be able to use Soft-Proofing to simulate the printed image on your monitor. To do this, you can use the ICC-Profiles provided, and then print using the ICC profiles as the Print Space (or Output space).

Matching Specific Colors

(e.g., a Company logo)

RGB Only

- Standard Color Matching, and the sRGB setting.
- PostScript Color Matching using the Absolute Colorimetric option.
- Use the Color Swatch Utility to print out a chart of RGB swatches and enter your desired RGB values in your application's color picker.

RGB or CMYK

- If you are printing from a graphics application such as Adobe Photoshop, you may be able to use Soft-Proofing to simulate the printed image on your monitor. To do this, you can use the ICC-Profiles provided, and then print using the ICC profiles as the Print Space (or Output space).
- Alternatively, use PostScript Color Matching with the Absolute Colorimetric setting.

Printing Vivid Colors

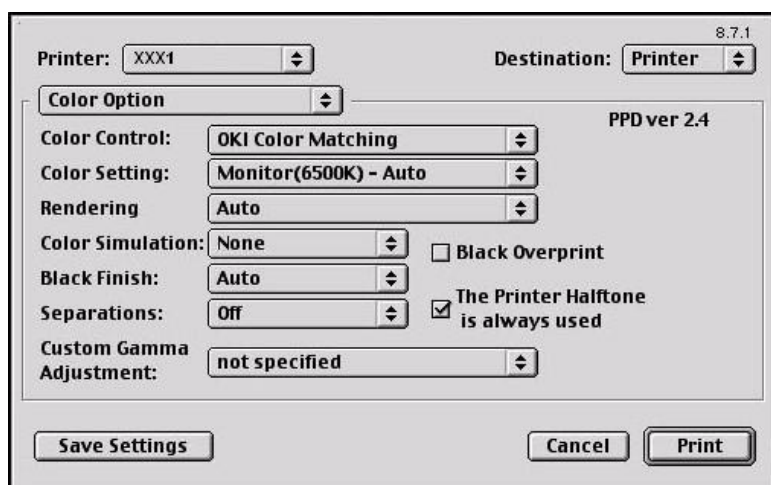
RGB Only

- Use Color Matching, with the Monitor 6500k Vivid, sRGB or Digital Camera settings.

RGB or CMYK

- Use PostScript Color Matching with the Saturation option.

Color Option



1. Open your printer driver (by choosing **File** → **Print** from an application) and select your printer.
2. Open the drop-down menu directly underneath the printer and select **Color Option**.



Color Control

Color Control allows you to determine the scheme in which the printer will display colors.



Select from:

a. OKI Color Matching

This is OKI's proprietary color matching system. It affects *RGB data only*. This is the default setting. This option provides the fastest, best color matching for your printer.

b. PostScript Color Matching

This uses PostScript Color Rendering Dictionaries built into the printer. It affects both RGB and CMYK data.

c. PANTONE®

Uses PANTONE color definitions built into the printer.

d. No Color Matching

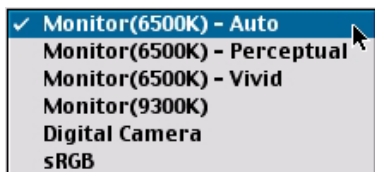
No color correction occurs when selected. This option is beneficial when other matching regimens are used, specifically if you select a Color Simulation option.

e. Print in Grayscale

No color will print. The printer will interpret all colors as a variation of grays.

Color Setting

This option allows you to select your color settings as they appear on your monitor.



Select the method you wish to use:

Monitor(6500k) Auto

The default setting that selects the best options for your printer. This selection works best for office situations.

Monitor (6500k) Perceptual

Optimized for printing photographs when using a monitor with a color temperature of 6500K. This is best for printing photographic images.

Monitor (6500k) Vivid

Optimized for printing bright colors when using a monitor with a color temperature of 6500K. Ideal for office graphics and text. Vivid or Digital Camera settings produce brightest colors.

Monitor (9300k)

Optimized for printing photographs when using a monitor with a color temperature of 9300K.

Digital Camera

Optimized for printing photographs taken with a digital camera. This tends to produce prints with lighter and brighter colors. For some photographs, other settings may be better depending on the subjects and the conditions under which they were taken. Vivid or Digital Camera settings produce brightest colors.

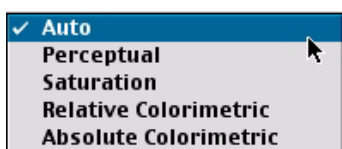
sRGB

This option attempts to simulate RGB color.

Optimized for matching specific colors, such as a company logo color. The colors within the printer's color gamut are printed without any modification, and only colors that fall outside the printable colors are modified.

Rendering

When a document is printed, a conversion takes place from the document's color space to the printer color space. The rendering intents are essentially a set of rules that determine how this color conversion takes place.



Select the desired option:

Auto

The best default. This selects the optimal settings for a general office environment.

Perceptual

Best choice for printing photographs. Compresses the source gamut into the printer's gamut while maintaining the overall appearance of an image. This may change the overall appearance of an image as all the colors are shifted together.

Saturation

Best choice for printing bright and saturated colors if you don't necessarily care how accurate the colors are. This makes it the recommended choice for graphs, charts, diagrams etc. Maps fully saturated colors in the source gamut to fully saturated colors in the printer's gamut.

Relative Colorimetric

Good for proofing CMYK color images on a desktop printer. Much like Absolute Colorimetric, except that it scales the source white to

the (usually) paper white; i.e. unlike Absolute Colorimetric, this attempts to take the paper white into account.

Absolute Colorimetric

Best for printing solid colors and tints, such as Company logos etc. Matches colors common to both devices exactly, and clips the out-of-gamut colors to their nearest printed equivalent. Tries to print white as it appears on screen. The white of a monitor is often very different from paper white, so this may result in color casts, especially in the lighter areas of an image.

Color Simulation

Affects **CMYK output only** and is usually used in offset printer environments only.

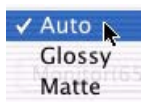


This option simulates what the output will look on a printing press using the ink types SWOP, Euroscale or Japan. If using CMYK Ink Simulation, it is recommended that you switch off all other Printer Color Matching by selecting No Color Matching under the Color Match option in the printer driver.

Select the option desired.

Black Finish

This setting determines Black Toner usage only.



Auto

This option is best for an office environment, with the printer determining which style is better.

Glossy

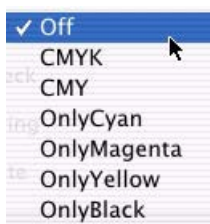
This option uses more CMYK and less Black while producing a shinier black.

Matte

This option uses more Black and less CMYK while producing a flatter black.

Separations

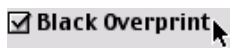
This option affects output only, allowing you to print all four colors as separate plates.



Black Overprint

This option prevents registration errors and only works for 100% black text.

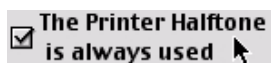
Click the checkbox to enable the option.



Printer Halftone

This option prevents the halftone of a high-end graphics application from printing.

Click the checkbox to enable the option.



Custom Gamma Adjustment

Not available.

Job Option

Printer: Destination:

Job Option

PPD ver 6.0

Quality:

Media Type:

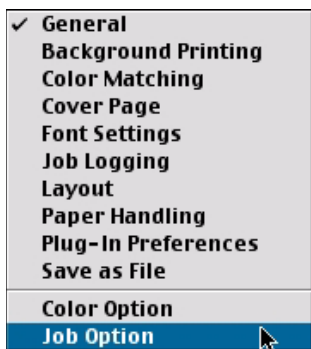
☐ Collate ☐ Page Rotate

☒ Media Check ☐ Toner Saving

☐ MP tray is handled as manual feed

To access Job Option:

1. Click **File** → **Print**, and select your printer.
2. Open the drop-down list directly below **Printer:** and select **Job Option**.



3. Make the desired selections.
 - Quality
 - Media Type
 - Miscellaneous Selections

Job Option

Quality

A straightforward selection of the print quality desired.

- Fast: 600 x 600 dpi, both models
- Fine

Model C7350: 600 x 1200 dpi

Model C7550: 1200 x 1200 dpi



Media Type

Many options are available for selecting the type of the print media. Normally the Printer Setting is sufficient.

Select your desired Media Type.



NOTE

Any selection, other than Printer Setting will override the printer's Menu setting.

Job Option

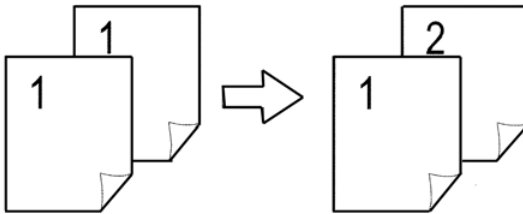
Miscellaneous Selections

<input type="checkbox"/> Collate	<input type="checkbox"/> Page Rotate
<input checked="" type="checkbox"/> Media Check	<input type="checkbox"/> Toner Saving
<input type="checkbox"/> MP tray is handled as manual feed	

Collate

Collating can be carried out with or without a hard disk drive installed. However, printers with a hard disk drive will provide greater performance. This option is useful when printing multiple copies of large documents and wish for them to be printed in sequence.

Click to enable collation of your documents.



Media Check

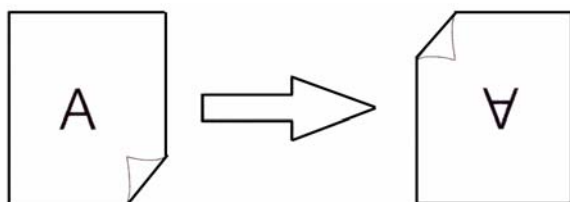
Sets whether the printer checks the matching of paper size to that of the tray. Only standard sizes are checked.

MP tray is handled as manual feed

Selecting this will cause the MP tray to be used in manual feed situations. The MP tray *cannot* be used for duplex printing.

Page Rotate

Checking this will rotate the printed material on the page 180 degrees.



Toner Saving

Checking this will enable toner saving.

Job Type Plug-in

This plug-in allows you to utilize features through the printer's optional hard disk drive.

NOTE

- The internal hard disk must be installed in the printer and enabled to allow for spooling of the print job before final printing.
- If the hard disk memory is insufficient for the spooled data, **DISK FULL** is displayed and only one copy printed.
- If the software application being used has a collate print option, this must be turned OFF for secure printing to operate correctly.
- Secure printing may not be available in some software applications.

To access Job Type,

1. Select your printer.
2. Open the drop-down menu directly underneath the printer and select **Job Type**.



Each feature on the Job Type screen is detailed below.

Job Type Features

Print Type

Printer: Destination: 8.7.1

JobType

Print Type : ☒ Normal ☐ Job Spool
☐ Secure
☐ Proof and Print
☐ Store to HDD

Job Name :

Personal ID Number :

☐ Run maintenance cycle before printing

From here you select the type of printing you wish to use.

Normal

The default setting.

Job Spool

Lets you spool your print job to the printer's hard drive.

Secure

(see page 28)

Allows you to print confidential documents on network printers by storing them on the printer's hard drive, then going to the printer and using the control panel to print out the document.

Proof and Print

(see page 30)

Allows printing of a single copy of a document for checking before printing multiple copies of the same document.

Store to HDD

(see page 32)

Allows print jobs to be stored on the hard disk for future printings.

Job Type Features

Print Type

Secure Print

Allows you to print confidential documents on network printers by storing them on the printer's hard drive, then going to the printer and using the control panel to print out the document.

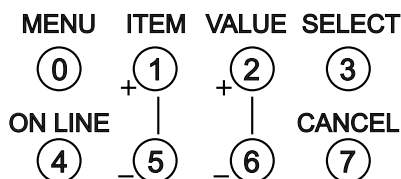
NOTES

- The internal hard disk must be installed in the printer and enabled, to allow for spooling of the print job before final printing.
- If the hard disk memory is insufficient for the spooled data, DISK FULL is displayed and only one copy is printed.

To send a confidential document to the printer using Secure Print:

1. Select the **Secure** option.
2. Enter a job name of up to 16 characters next to **Job Name** and a four digit personal ID number from 0000 to 9999 in the **ID Number** box.
3. Press **Print** to proceed with your print job. The document will be stored on the printer's hard disk.
4. Walk up to the printer to print out the document using the front panel (see below).

To print a confidential document



1. Press the MENU button to access the PRINT JOBS MENU and press the SELECT button.

2. Use the numbered buttons on the control panel to enter the personal ID number you set above.
3. Press the VALUE button until ALL JOBS or the required job name is displayed.
4. Press the SELECT button.

The document will print and be deleted from the hard disk drive.

To delete a confidential document before printing it:

1. Press the MENU button to access the **PRINT JOBS MENU** and press the SELECT button.
2. Use the numbered buttons on the control panel to enter the personal ID number you set above.
3. Press the VALUE button until **ALL JOBS** or the required job name is displayed.
4. Press the CANCEL button to delete the job from the printer.

Proof and Print

NOTES

- The internal hard disk must be installed in the printer and enabled, to allow for spooling of the print job before final printing.
- If the hard disk memory is insufficient for the spooled data, **DISK FULL** is displayed and only one copy is printed.
- If the software application being used has a collate print option, it must be turned OFF for proof and print to operate correctly.
- Proof and print may not be available in some software applications.

Using Proof and Print

1. Select **Proof and Print**.
2. Enter a job name of up to 16 characters under **Job Name Setting** and a four digit personal ID number from 0000 to 9999.
3. Click **Print** to proceed with your print job. Print the document from the software application being used. The document will be stored on the printer's hard disk and one copy will print for your perusal.
4. After checking the proof, you then can print or delete (if incorrect) the remaining copies of the document using the procedures given below.

Printing the copies of a Proof and Print document

1. Press the MENU button to access the **PRINT JOBS MENU**, then press the SELECT button.
2. Use the numbered buttons on the control panel to enter the personal ID number you set above.
3. Press the VALUE button until **ALL JOBS** or the required job name is displayed.
4. Press the SELECT button to print the remaining copies of the document.

Deleting a Proof and Print document before printing the copies

If the proof is not ready for printing, the job must be deleted from the printer:

1. Press the MENU button to access the PRINT JOBS MENU and press the SELECT button.
2. Use the numbered buttons on the control panel to enter the personal ID number you set above.
3. Press the VALUE button until **ALL JOBS** or the required job name is displayed.
4. Press the CANCEL button to delete the remaining copies of the document.
5. When the deletion confirmation message appears, confirm by pressing the SELECT button.

Store To Hard Disk

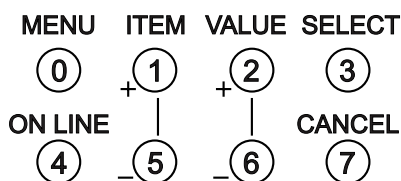
NOTES

- The internal hard disk must be installed in the printer and enabled to allow for spooling of the print job before final printing.
- If the hard disk memory is insufficient for the spooled data, DISK FULL is displayed and only one copy printed.
- If the software application being used has a collate print option, this must be turned OFF for store to hard disk to operate correctly.
- Store to hard disk may not be available in some software applications.

Using Store to Hard Disk

1. Select **Store to HDD**.
2. Enter a job name of up to 16 characters under **Job Name** and a four digit personal ID number from 0000 to 9999.
3. Click **Print** to proceed with your print job. The document will be stored on the printer's hard disk.
4. The document can then be printed or deleted using the procedures given below.

Printing a document stored on the hard disk.

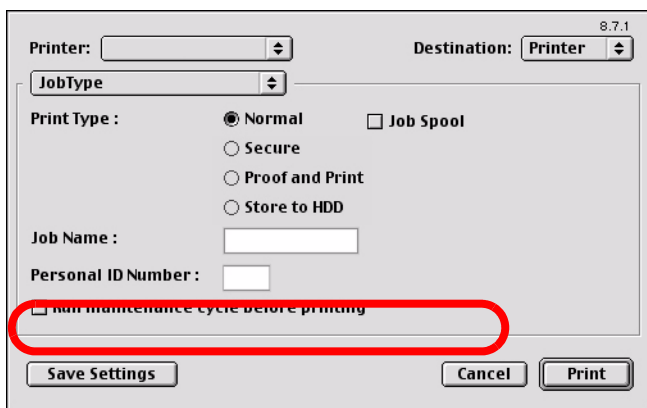


1. Press the MENU button to access the **PRINT JOBS MENU** and press the SELECT button.
2. Use the numbered buttons on the control panel to enter the personal ID number you set above.
3. Press the VALUE button until **ALL JOBS** or the required job name is displayed.
4. Press the SELECT button to print the document.

Deleting a stored document from the hard disk drive

1. Press the MENU button to access the **PRINT JOBS MENU** and press the SELECT button.
2. Use the numbered buttons on the control panel to enter the personal ID number you set above.
3. Press the VALUE button until **ALL JOBS** or the required job name is displayed.
4. Press the CANCEL button to delete the remaining copies of the document.
5. When the deletion confirmation message appears, confirm by pressing the SELECT button.

Run Maintenance Cycle Before Printing



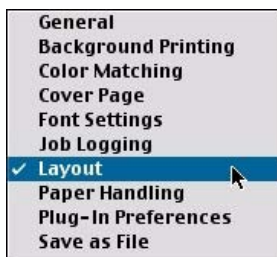
The image shows a printer settings dialog box. At the top right, the version number '8.7.1' is displayed. The 'Printer:' field is empty with a dropdown arrow. The 'Destination:' field is set to 'Printer' with a dropdown arrow. Below these, there is a 'JobType' dropdown menu. The 'Print Type' section contains four radio buttons: 'Normal' (selected), 'Secure', 'Proof and Print', and 'Store to HDD'. There is also an unchecked checkbox for 'Job Spool'. Below the radio buttons, there are two text input fields: 'Job Name:' and 'Personal ID Number:'. At the bottom of the main settings area, there is a checkbox labeled 'Run maintenance cycle before printing', which is highlighted with a red oval. At the very bottom of the dialog, there are three buttons: 'Save Settings', 'Cancel', and 'Print'.

Selecting **Run Maintenance Cycle Before Printing** forces the printer to automatically clean itself before printing. This option allows you to improve your print quality if there is a problem with printing such as too much graininess.

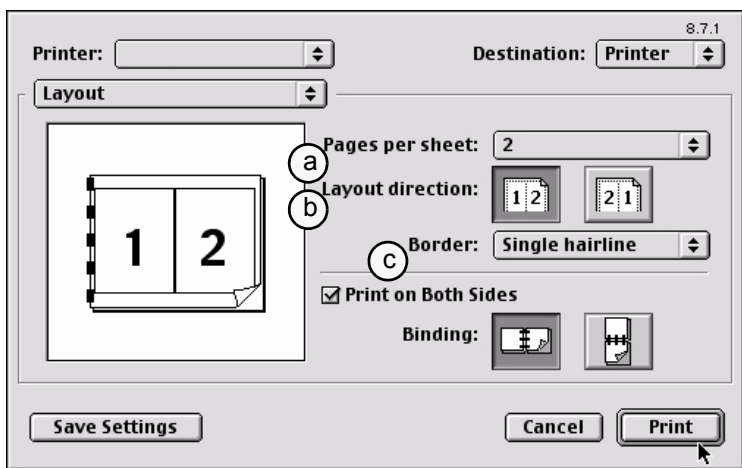
Printing Multiple Pages on One Sheet

(N-up Printing)

1. Click **File** → **Print**, and select your printer.
2. Open the drop-down menu directly underneath the printer and select **Layout**.



3. From the Layout screen, select the options desired.



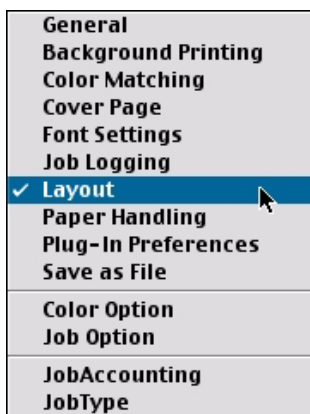
- a. Set the number of pages to be printed.
 - b. Select the desired orientation (portrait or landscape).
 - c. Select a border between the sheets, if desired.
4. Click **Print** to print or **Save Settings** to save and close the printer dialog box.

Duplex Printing (Printing on Both Sides of the Paper)

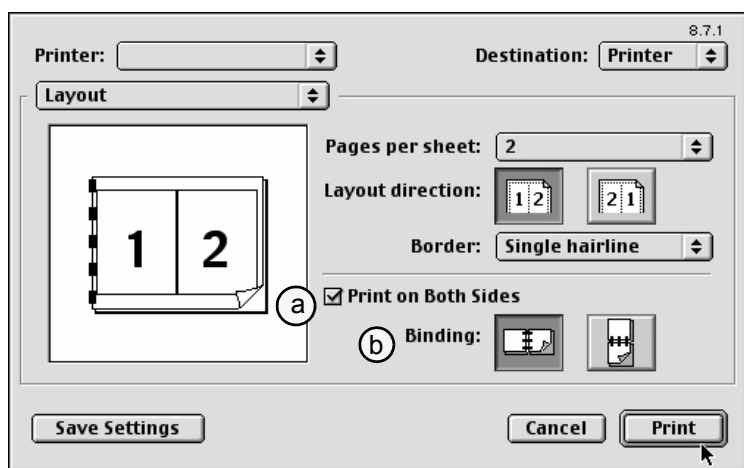
NOTE

The optional duplex unit must be installed in the printer and enabled before duplex printing can be carried out.

- Standard paper sizes only.
 - Paper weight range 20 to 28 lb. US Bond (75 to 105 g/m²).
 - Paper must be loaded print side *up*.
 - Only Tray 1, optional Trays 2 and 3, and the High Capacity Feeder trays can be used for duplex printing. The MP tray *cannot* be used for duplex printing.
1. Click **File** → **Print**, and select your printer.
 2. Open the drop-down menu directly underneath the printer and select **Layout**.



3. From the Layout screen, select the options desired.



- a. Select **Print on Both Sides**.
- b. Select which **Binding** you prefer.
4. Click **Print** to print or **Save Settings** to save and close the printer dialog box.

Collating

Collating can be carried out with or without a hard disk drive installed. However, printers with a hard disk drive will provide greater performance.

Important

If your software application has a collate option, use it instead of the collate option in the printer driver. Doing so will prevent any conflicts in printing, i.e. collate from the software application or collate from the printer driver.

1. Click **File** → **Print**, and select your printer.
2. The **General** dialog box should already be displayed. If not, then select **General** from the menu.



3. Select **Collated**.
4. Click **Print**.

The image shows a printer settings dialog box with the following elements:

- Printer:** A dropdown menu.
- Destination:** A dropdown menu set to "Printer".
- General:** A tab selected in the settings area.
- Copies:** A text box containing the number "1".
- Collated:** A checkbox that is checked and circled in red.
- Pages:** Radio buttons for "All" (selected), "From:", and "To:". The "From:" and "To:" fields are empty text boxes.
- Paper Source:** Radio buttons for "All pages from:" (selected), "First page from:", and "Remaining from:". Each radio button is followed by a dropdown menu.
- Buttons:** "Save Settings", "Cancel", and "Print" at the bottom.

Version number 8.7.1 is displayed in the top right corner.

Mac OS 9.x Utilities

General Information

Important!

These Utilities are unavailable for Mac OS 10.x.

The following utilities are supplied:

- **Fonts Downloader (see page 42)**
This utility allows you to transfer fonts to the printer's RAM or optional hard disk and to manage fonts on your PostScript printer. This utility is an Adobe product and is not supported by Oki Data. Please see the Read Me file for further information.
- **Color Swatch Utility (see page 43)**
The Color Swatch Utility allows you to print color samples or swatches on your color printer. The swatches are used with your software program to select and reproduce color accurately. The swatches represent selected samples of the your printer's color palette and can be used to find the desired colors for your printed documents.
- **Storage Device Manager (see page 45)**
Using the software improves the internal performance of the printer allowing you to adjust printer options.

Important!

The printer's internal hard drive does not communicate directly back to the Storage Device Manager software; it sends any error messages to the printer display. If things seems to be "stuck," check the display of the printer.

Installing the Utilities

1. Insert the CD supplied with your printer into the CD-ROM drive.
2. Double-click the CD icon that appears on the desktop.
3. Open the **MAC** folder.
4. Click **PSDRV** → **English**, then double click the **Mac Installer** icon.



5. Click **Continue** and accept the Software License Agreement.
6. Select **Custom Install** to access the Utility Installation.



7. Click the boxes beside the Utilities you wish to install, then click **Install**.
The Utilities install into the folder you specify during the installation process.

Fonts Downloader

This utility allows you to transfer fonts to the printer's RAM or hard disk and to manage fonts on your PostScript printer. This utility is an Adobe product and is not supported by Oki Data. Please see the Read Me file for further information.

Important!

This utility only communicates with the printer via AppleTalk and is incompatible with USB connections.

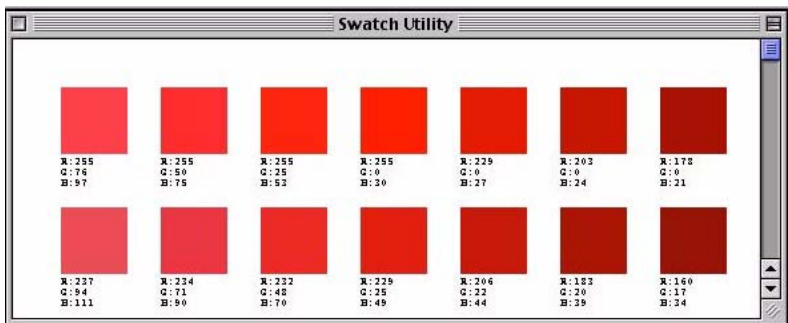
Color Swatch Utility

Things To Remember:

- Your software may not be able to match colors using the information provided by the swatch files. In that case, you may need to use other means of matching.
- Many other factors influence how you see color: the color and finish of the paper, the light you are using, even the colors surrounding the one you are identifying.
- The swatches represent selected samples of your printer's color palette and can be used to find the desired colors for your printed documents.

Open Color Swatch

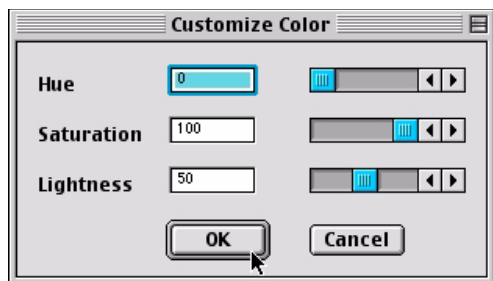
Double click the local hard drive icon, then double click **Okidata** → **Swatch Utility** → **Swatch Utility**.



Each color block, or sample, is identified with information your software package needs to reproduce that color accurately. The numbers under each block specify the amounts of the primary colors—red (R), green (G), and blue (B), that mix to form each particular shade. The amounts are given as a numerical value between 0 and 255.

Create a Custom Swatch

1. If the color you are seeking is not in the Simple Swatch, create a new color by selecting **Custom Swatch** from the **File** menu.



2. Drag the handles as required and press **OK** to create the new color.
 - **Hue** bar changes the hue of the swatches, for example, red to green or blue to yellow.
 - **Saturation** bar changes vividness.
 - **Lightness** bar changes light intensity.
3. The utility then creates many different possibilities from which you can choose.
4. Once satisfied, print the swatch from the menu using **File** → **Print** or repeat the steps to find the color desired.

NOTE

- **Swatch utility does not guarantee that the printer will print the same color as displayed; consider this only as a reference from which you can adjust parameters.**
- **The printer may not be able to print the exact color that you desire.**

- For additional information, including **Applying Color Value in your Application**, and **Setting Monitor Color**, see the *Swatch Utility ReadMe* file located in the Mac folder.

Storage Device Manager

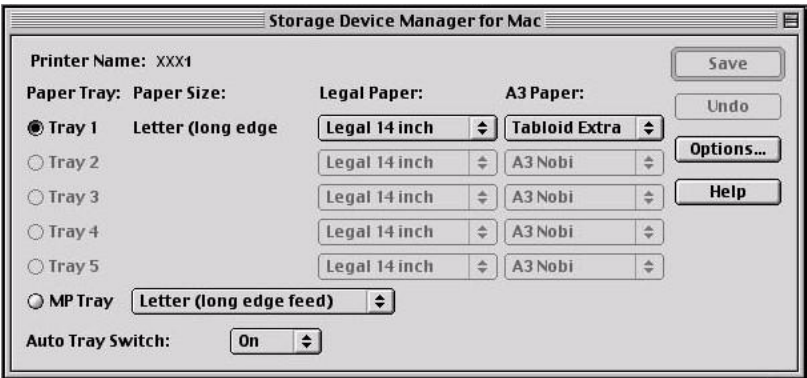
Important!

- When attempting to open the application, ensure that the default printer is connected and turned on.
- If your default printer is a virtual printer, the application will return the error message “This utility does not support this interface.” Reset your default printer to a real printer.

Open SDM

Double click the local hard drive, then double click
Okidata → **SDM for Mac** → **Storage Device Manager for Mac**.

From the main screen, you can set the default feed tray as well as paper sizes for the feed trays. You can also enable (the default) or disable the Auto Tray Switch feature.

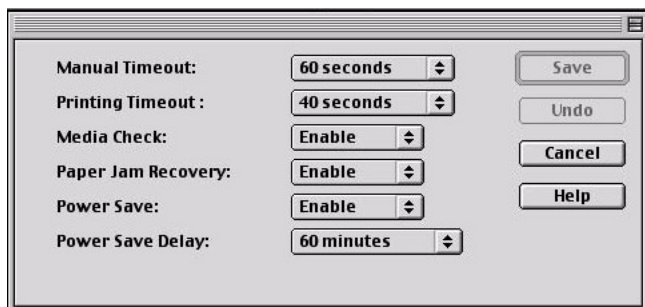


NOTE

Trays that are not installed are grayed out and disabled.

Using Storage Device Manager to set Options

Click the Options button and make any desired changes in the settings. When you are done making changes, click Save to download the settings to the printer.



Manual Timeout

When manual feed is selected and the printer detects that there is no paper in the requested feed tray, it will show a message requesting that paper be loaded and wait a period of time for the paper to be loaded before cancelling the print job. This sets the period of time the printer will wait.



Printing Timeout

When printing a job and the paper in the selected tray runs out, the printer will wait a period of time for more paper to be loaded before cancelling the print job. This sets the period of time the printer will wait.



Media Check

Sets whether the printer checks the matching of paper size to that of the tray. Only standard sizes are checked. This should be disabled when printing transparencies or labels. It can also be disabled in the driver as a job is being printed.

Paper Jam Recovery

This parameter, when enabled, sets whether or not printing continues after a paper jam has been cleared. If set to Disable, the print job that was being printed when the paper jam occurred will be cancelled after clearing the paper jam. When set to Enable, the print job will continue after the jam has been cleared.

Power Save

This will enable Power Save Delay.

Power Save Delay

When no input is received for the specified time, the printer will enter Power Save Mode.



SDM Menu Items

File Menu



Refresh

Downloads the latest settings from the printer.

Update PPD

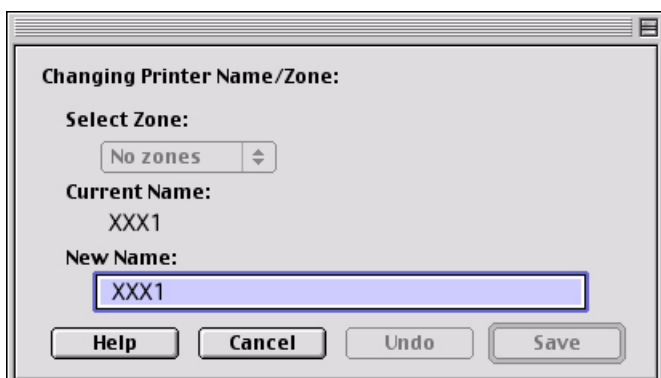
Loads the latest PPD file.

Utilities Menu



Change Printer Name/Zone

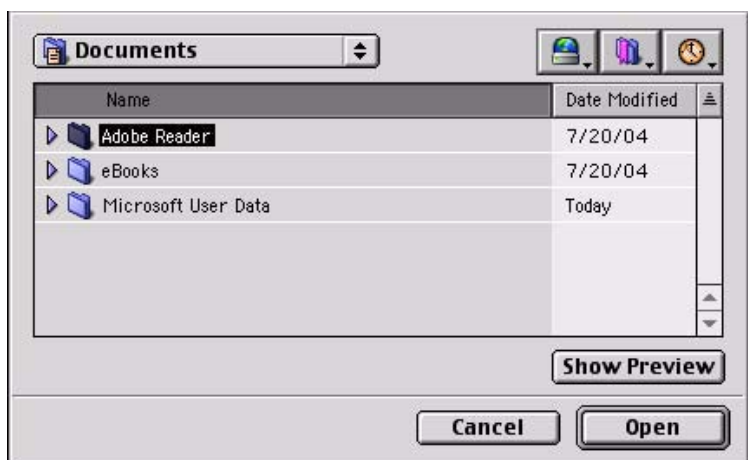
Only available if the printer is on an AppleTalk network.



This changes the name that is stored in the PostScript interpreter in the printer. However, this will not change the name displayed in the Chooser.

1. Click **Utilities** → **Change Printer Name/Zone**.
2. If available, choose the **Zone** required.
3. Rename the printer with the desired name and press **Save**.

Download File

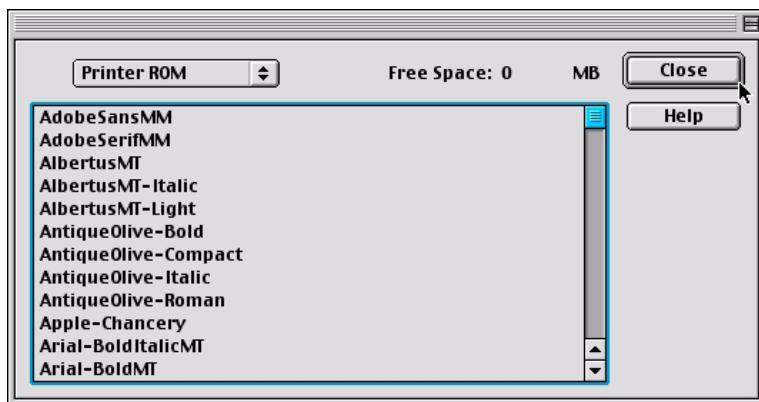


This utility allows you to download PS/PDF/Font files to the printer's hard drive for faster printing. The printer will automatically print the PS/PDF files unless they are specified to be stored on the hard disk.

1. Click **Utilities** → **Download File**.
2. Select the file you wish to download to the printer.
3. Click **Open** to start the download process.

Display Font List

Shows a list of fonts currently loaded in the printer.



Initialise Disk



CAUTION!

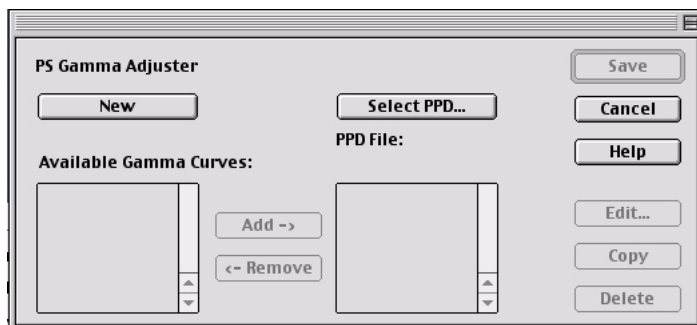
This utility erases the printer's hard disk and causes it to rebuild the directories. This action cannot be undone.

1. Click **Utilities** → **Initialise Disk**.
2. Select the Disk to erase and click **Initialise**.

Substitute Fonts

This function is not supported for a non-kanji printer.

PS Gamma Adjuster



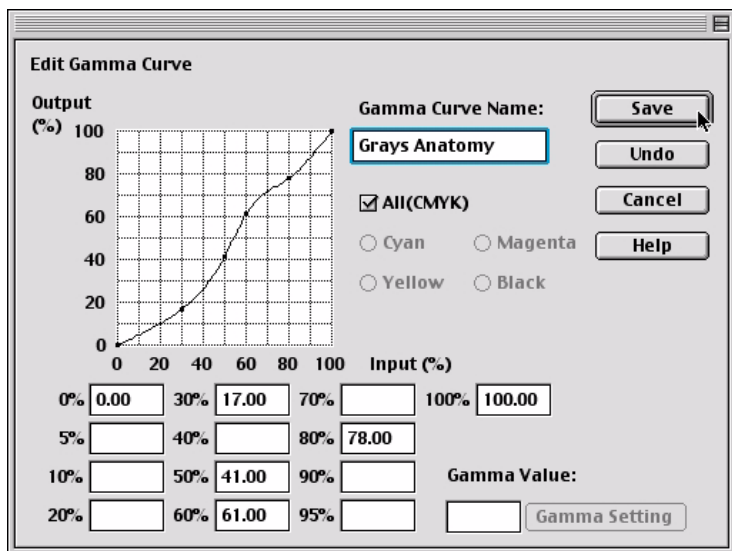
This option allows adjusting the gamma output, or toner density, when printing a job. The Gamma Curve profile is sent to the printer with the print job.

1. Because Gamma Curve profiles are tied to the displayed PPD file, select the correct PPD file before proceeding.
2. To add an available Gamma Curve profile, highlight the desired profile and press the **Add** button.
3. To remove a Gamma Curve profile from the PPD column, press the **Delete** button, not the **Remove** button. Only use the **Remove** button if you edit (using the **Edit** button) the profile and wish to store it in the **Available Gamma Curves** column.

Create/Edit a New Gamma Curve Profile

1. To create a new Gamma Curve, click **New**.

To edit an existing Gamma Curve, highlight the profile and click **Edit**.



2. To apply the curve to all four colors, select **All (CMYK)** [the default]. To edit a specific color, deselect **All (CMYK)** and click the individual color.
3. To modify a gamma curve, click a point on the curve and drag it to change the shape of the curve. Or if known, enter the values in the fields at the bottom of the screen.
4. Once the configuration is complete, fill in a name and click **Save**.

Important!

Remember, the Gamma Curve profile is tied to the displayed PPD file; so the PPD file must be selected in the printer setup to gain access to the Gamma Curve profile saved to the same PPD file.

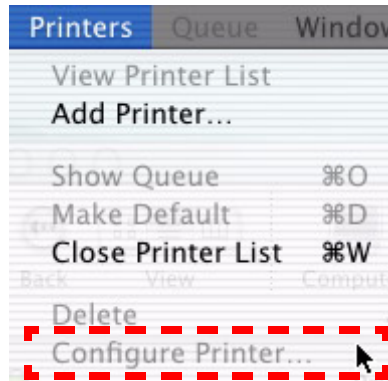
Macintosh OS 10.1 & 10.2

Printer Driver

See your printed *Software Installation Guide* for information on installing printer drivers.

Adjusting Options

Apple Computer has not enabled **Configure Printer...** for OS 10.1 and 10.2. Therefore, direct configuration of the printer driver is unavailable at this time.



Macintosh OS 10.1 & 10.2

Operation

This section explains how to change the printer's operation for specific print jobs.

Most applications allow the printer properties to be accessed from within the document print dialog.

This section will only detail options as they apply to the Oki Data printer driver.

Color Print Matching

The install utility provides a color matching profile for your printer. In general, using the **OKI Color Matching** settings will provide reasonable default settings that produce good results for most documents.

Many applications have their own color settings and these may override the settings in the printer driver. Please refer to the documentation for your software application for details on how that particular program's color management functions.

Factors That Affect the Appearance of Printed Documents

If you wish to manually adjust the color settings in your printer driver, please be aware that color reproduction is a complex topic, and there are many factors to take into consideration. Some of the most important factors are listed below.

Differences between the Range of Colors a Monitor or Printer Can Reproduce

- Neither a printer nor a monitor is capable of reproducing the full range of colors visible to the human eye. Each device is restricted to a certain range of colors. Additionally, a printer cannot reproduce all of the colors displayed on a monitor and vice versa.
- Both devices use very different technologies to represent color. A monitor uses Red, Green and Blue (RGB) phosphors (or LCDs), a printer uses Cyan, Yellow, Magenta and Black (CMYK) toner or ink.
- A monitor can display very vivid colors such as intense reds and blues and these cannot be easily produced on any printer using toner or ink. Similarly, there are certain colors, (some yellows, for example), that can be printed, but cannot be displayed accurately on a monitor. This disparity between monitors and printers is often the main reason that printed colors do not match the colors displayed on screen.

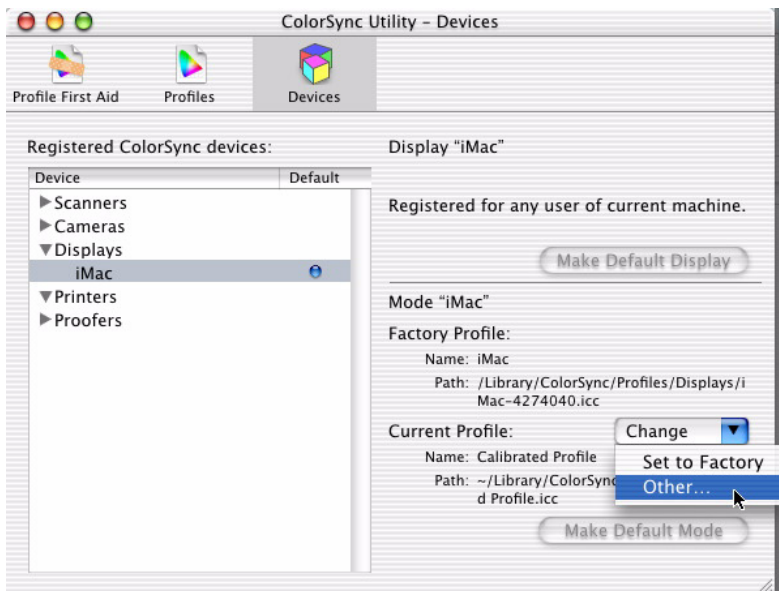
Viewing Conditions

A print can look very different under different lighting conditions. For example, the colors in a print may look different when viewed standing next to a sunlit window, compared to how they look under standard office fluorescent lighting.

Monitor Color Profile Select

Apple provides a **ColorSync Utility** → **Devices** that allows selection of the Oki Data supplied ICC color profile for your monitor. The profile will attempt to calibrate the monitor to more closely match the printer's output. However, merely selecting the profile will not automatically produce perfect results as many factors will contribute to the gamut of color selection.

1. Navigate to the utility by accessing your **Local Hard Drive** → **Applications** → **Utilities** → **ColorSync Utility**.
2. Click the arrow next to **Displays** and select your monitor (in this example it is iMac). For **Current Profile**, select **Other...**



3. From the **Profile** selection menu, click the desired Oki Data ICC Profile, then press **Open** to enable it.

Color Profile Select: Apple ColorSync

Not to be confused with the **ColorSync Utility** → **Devices**, Apple also provides a System Preference utility, **ColorSync**, for selection of color profiles for the printer and documents.

1. Click **System Preferences** → **ColorSync**.
2. On the **Device Profiles** tab, select your Oki Data **Output** profile.
3. On the **Document Profiles** tab, for the CMYK Default option, highlight the Oki Data profile desired.

Printer Driver Color Settings

The driver settings for Manual color can change the appearance of a printed document. There are several options available to help match the printed colors with those displayed on screen. These options are explained in subsequent sections.

To access the color matching options in the driver discussed below:

1. Access the printer settings page via the Print dialog from any application (usually **File** → **Print**).
2. Click the drop down menu and select **Printer Features** and then select the **Feature Set 2** tab for **Color Control**.

Monitor Settings

The brightness and contrast controls on your monitor can change how your document looks on-screen. You can calibrate your monitor's color regimen in **System Preferences** → **Displays** → **Color**. Additionally, your monitor color temperature influences how “warm” or “cool” the colors look.

NOTE

Several of the Color Matching options make reference to your monitor's Color Temperature. Many modern monitors allow the color temperature to be adjusted using the monitor's control panel.

There are several settings found on a typical monitor:

- **5000k* or D50**

Warmest; yellowish lighting, typically used in graphics arts environments.

- **6500k* or D65**

Cooler; approximates daylight conditions.

- **9300k*:**

Cool; the default setting for many monitors and television sets.

(*k = degrees Kelvin, a measurement of temperature)

How Your Software Application Displays Color

Some graphics applications such as Macromedia Freehand or Adobe Photoshop may display color differently from “office” applications such as Microsoft Word. Please see your application's online help or user manual for more information.

Paper Type

The type of paper used can also significantly affect the printed color. For example, a printout on recycled paper can look duller than one on specially formulated glossy paper.

Choosing a Color Matching Method

There is no one correct way to achieve a good color match between the document displayed on your monitor, and its printed equivalent. There are many factors involved in achieving accurate and reproducible color.

However, the following guidelines may help in achieving good color output from your printer. There are several suggested methods, depending on the type of document you are printing.

NOTE

These suggestions are for guidance only. Your results may vary depending on the application from which you are printing. Some applications will override any color matching settings in the printer driver without warning.

RGB or CMYK?

The guidelines for choosing a color matching method make distinctions between Red, Green, Blue (RGB) and Cyan, Magenta, Yellow, Black (CMYK).

Generally, most office documents you print will be in RGB format. This is the most common, and, if you do not know your document's color mode, assume that it is RGB.

Typically CMYK documents are only used in professional Desktop Publishing and Graphics applications.

Matching Photographic Images

RGB Only

The standard Color Matching (found in the printer driver under **Printer Features** → **Feature Set 2**) is a generally a good choice. Select a matching method appropriate to your monitor.

RGB or CMYK

If you are printing photographic images from a graphics application such as Adobe Photoshop, you may be able to use Soft-Proofing to simulate the printed image on your monitor. To do this, you can use the ICC-Profiles provided by Oki Data, and then print using the ICC profiles as the Print Space (or Output space).

Matching Specific Colors

(For instance, a Company logo.)

RGB Only

- OKI Color Matching, and the sRGB setting.
- PostScript Color Matching using the Absolute Colorimetric option.

RGB or CMYK

- If you are printing from a graphics application such as Adobe Photoshop, you may be able to use Soft-Proofing to simulate the printed image on your monitor. To do this, you can use the ICC-Profiles provided and then print using the ICC profiles as the Print Space (or Output space).
- Alternatively, use PostScript Color Matching with the Absolute Colorimetric setting.

Printing Vivid Colors

RGB Only

- Use OKI Color Matching, with either the Monitor 6500k Vivid, sRGB or Digital Camera settings.

RGB or CMYK

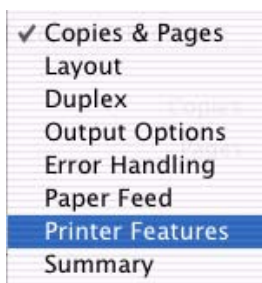
- Use PostScript Color Matching with the Saturation option.

Driver Options

OKI Printer Features

To access **Features**:

1. Click **File** → **Print** and select your printer.
2. Open the drop-down menu and select **Printer Features**.



Feature Set 1

Printer: XXX1

Presets: Standard

Printer Features

Feature Sets: Set 1

Quality: Fine

☐ Collate

Media Type: Printer Setting

Multipurpose tray is handled as manual feed: No

☐ Black Overprint

? Preview Save As PDF... Cancel Print

Select from the following options:

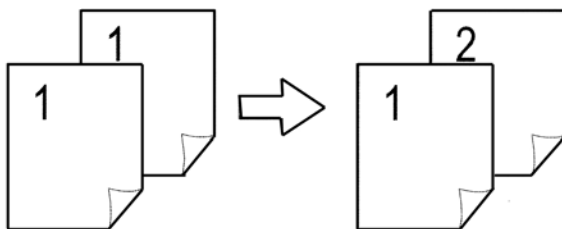
Quality

- Fast: 600 x 600 dpi, both models
- Fine:

Model C7350: 600 x 1200 dpi

Model C7550: 1200 x 1200 dp

Collate



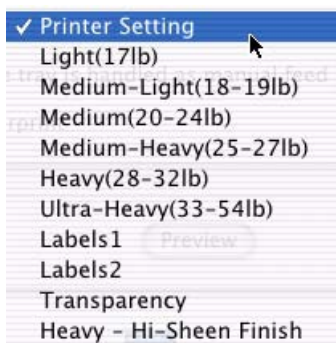
Collating can be carried out with or without a hard disk drive installed. However, printers with a hard disk drive will provide greater performance. This option is useful when printing multiple copies of large documents and you want to print them in sequence.

NOTE

If your software application has a collate option, use it instead of the collate option in the printer driver.

Media Type

Many options are available for selecting the media type. Normally the **Printer Setting** is used.



Any selection, other than **Printer Setting**, will override the printer's menu setting.

MP tray is handled as manual feed

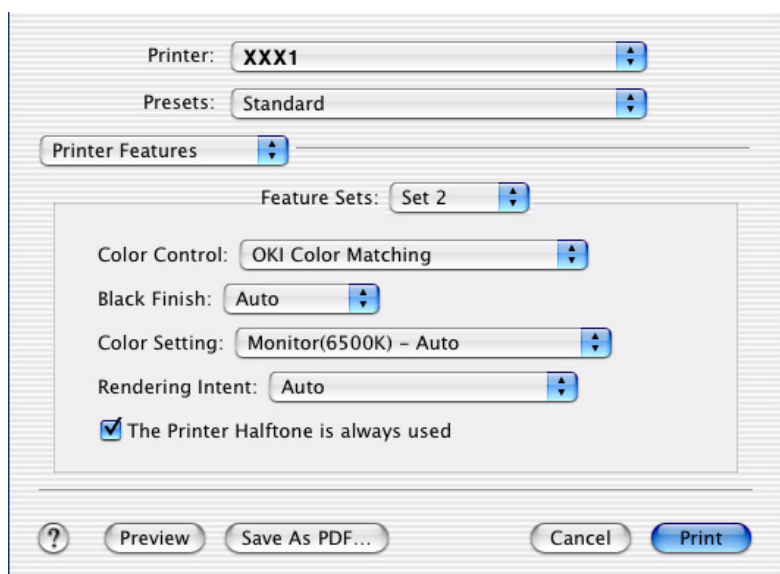
Select the option desired: the default is No. The MP tray *cannot* be used for duplex printing.

Black Overprint

This option prevents registration errors and only works for 100% black text.

Click the checkbox to enable the option.

Feature Set 2



Select from the following options:

Color Control

- ✓ OKI Color Matching
- PostScript Color Matching
- PANTONE
- No Color Matching
- Print in Grayscale

OKI Color Matching

Affects *RGB data only*. This is the default setting and provides the fastest, best color matching for your printer.

Postscript Color Matching

Uses PostScript Color Rendering Dictionaries built into the printer, and affects both RGB and CMYK data.

PANTONE®

Uses PANTONE color definitions built into the printer.

No Color Matching

No color correction occurs when selected. This option is beneficial when other matching regimens are used, specifically if you select a Color Simulation option.

Print In Grayscale

No color will print. The printer will interpret all colors as a variation of grays.

Black Finish

This setting determines Black Toner usage only.



Auto

This option is best for an office environment, with the printer determining which style is better.

Glossy

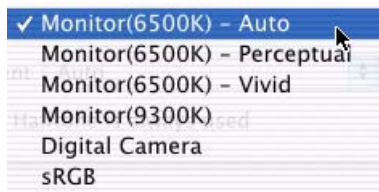
This option uses more CMYK and less black while producing a shinier black.

Matte

This option uses more black and less CMYK while producing a flatter black.

Color Setting

This option allows you to select your color settings as they appear on your monitor.



Monitor(6500k) Auto

The default setting that selects the best options for your printer. This selection works best for office situations.

Monitor (6500k) Perceptual

Optimized for printing photographs when using a monitor with a color temperature of 6500K, This is best for printing photographic images.

Monitor (6500k) Vivid

Optimized for printing bright colors when using a monitor with a color temperature of 6500K. Ideal for office graphics and text. Vivid or Digital Camera settings produce brightest colors.

Monitor (9300k)

Optimized for printing photographs when using a monitor with a color temperature of 6500K.

Digital Camera

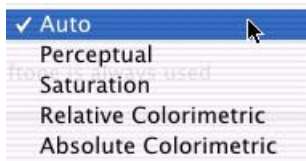
Optimized for printing photographs taken with a digital camera. This tends to produce prints with lighter and brighter colors. For some photographs, other settings may be better depending on the subjects and the conditions under which they were taken. Vivid or Digital Camera settings produce brightest colors.

sRGB

Optimized for matching specific colors, such as a company logo color. This option attempts to simulate RGB color. The colors within the printer's color gamut are printed without any modification, and only colors that fall outside the printable colors are modified.

Rendering Intent

When a document is printed, a conversion takes place from the document's color space to the printer color space. The rendering intents are essentially a set of rules that determine how this color conversion takes place.



Auto

The best default select as this selects the optimal settings for a general office environment.

Perceptual

Best choice for printing photographs. Compresses the source gamut into the printer's gamut whilst maintaining the overall appearance of an image. This may change the overall appearance of an image as all the colors are shifted together.

Saturation

Best choice for printing bright and saturated colors if you don't necessarily care how accurate the colors are. This makes it the recommended choice for graphs, charts, diagrams, etc. Maps fully saturated colors in the source gamut to fully saturated colors in the printer's gamut.

Relative Colorimetric

Good for proofing CMYK color images on a desktop printer. Much like Absolute Colorimetric, except that it scales the source white to the (usually) paper white; i.e. unlike Absolute Colorimetric, this attempts to take the paper white into account.

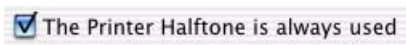
Absolute Colorimetric

Best for printing solid colors and tints, such as company logos etc. Matches colors common to both devices exactly, and clips the out of gamut colors to their nearest printed equivalent. Tries to print white as it appears on screen. The white of a monitor is often very

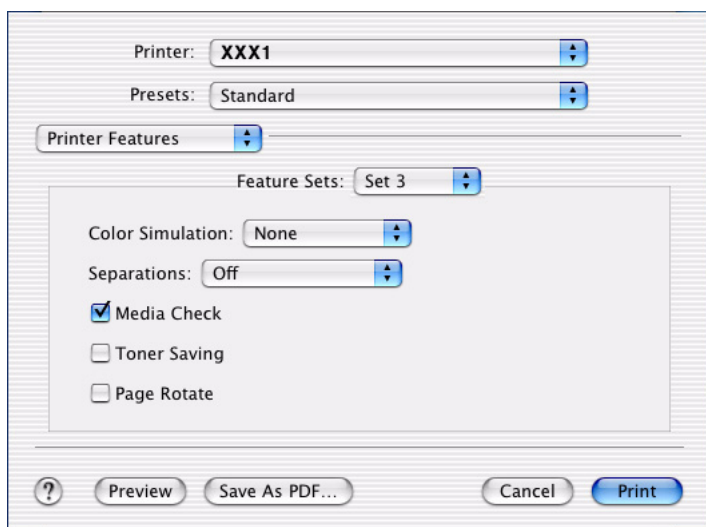
different from paper white, so this may result in color casts, especially in the lighter areas of an image.

Printer Halftone

This option prevents the halftone of a high-end graphic application from printing. Click the checkbox to enable the option.



Feature Set 3



Select from the following options:

Color Simulation

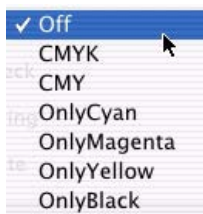
Affects CMYK output only and is usually used in offset printer environments only.



This option simulates what the output will look on a printing press using the ink types SWOP, Euroscale or Japan. If using CMYK Ink Simulation, it is recommended that you switch off all other Printer Color Matching by selecting the No Color Matching option under the Color Match option in the printer driver.

Separations

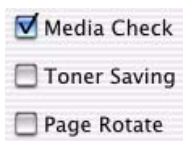
This option affects output only, allowing you to print all colors or separate plates.



NOTE

You must select a non-generic PostScript Printer Description (PPD) file for a printer that supports color separations.

Media Check



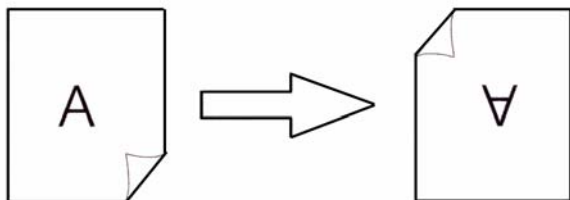
Sets whether the printer checks the matching of paper size to that of the tray. Only standard sizes are checked.

Toner Saving

Checking this will enable toner saving but reduce print quality.

Page Rotate

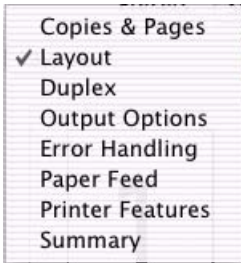
Checking this will rotate the printed material on the page 180 degrees.



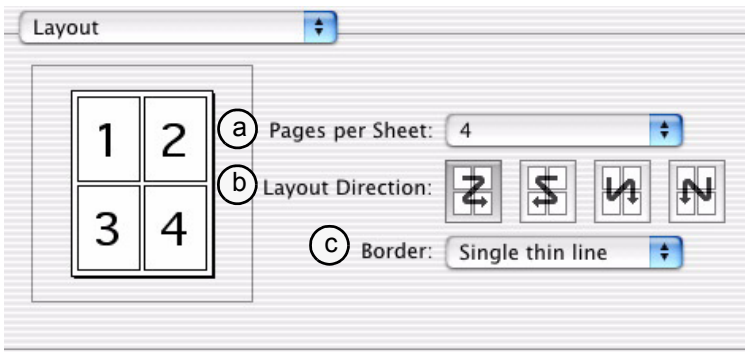
Printing Multiple Pages on One Sheet

(N-up Printing)

1. Click **File** → **Print** and select your printer.
2. Open the drop-down menu and select **Layout**.



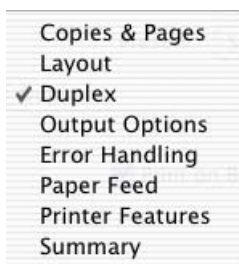
3. From the Layout screen, select the options desired.



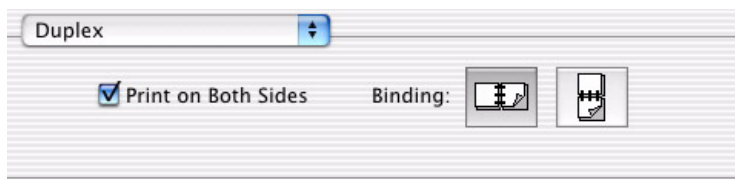
- a. For Multiple Pages, access **Pages per sheet**
- b. Select the desired **Layout Direction**.
- c. Select a **Border** between the sheets, if desired.

Duplex Printing (Printing on Both Sides of the Paper)

1. Click **File** → **Print** and select your printer.
2. Open the drop-down menu at left and select **Duplex**.



3. From the **Duplex** screen, select the options desired.



- a. For Duplexing (printing on both sides of the sheet), select **Print on Both Sides**.
- b. Select which **Binding** you prefer. Normally, the first option is the default.

NOTES

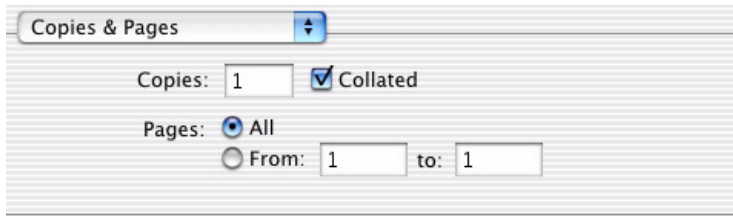
- Duplex printing can only be carried out on standard paper sizes and paper weights between 20 and 28 lb. (75 and 105 g/m²).
- The optional duplex unit must be installed in the printer and enabled before duplex printing can be carried out.
- Paper must be loaded into the paper tray with the print side facing upwards. The multi purpose tray cannot be used for duplex printing.

Collating

Collating can be carried out with or without the optional hard disk drive. However, using the HDD improves performance.

If the software application being used has a collate print option, it is recommended to use only one collate option to prevent any conflicts in printing, i.e. collate from the software application *or* collate from the printer driver.

1. Click **File** → **Print** and select your printer.
2. The **Copies & Pages** dialog box should display. If not, select **Copies & Pages** from the menu.
3. Select **Collated**.



4. Click **Print**.

Mac OS 10.1 & 10.2

Utilities

With the exception of Job Accounting, the utilities on the Drivers CD are unavailable for Mac OS X and will only run on Mac 9.x or Classic OS.

Once the Job Accounting utility has been set up by your Network Administrator, it is transparent to the operation of the printer driver on your OS X system.

For more information on Job Accounting, see the “User’s Guide, Windows” on the Manuals CD supplied with your printer.

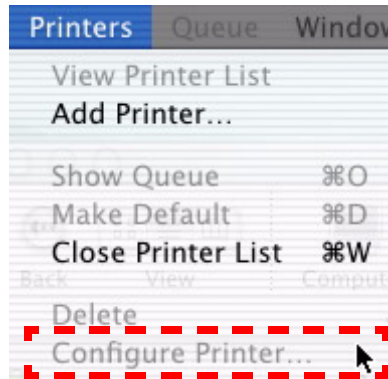
Macintosh OS 10.3

Printer Driver

See your printed *Software Installation Guide* for information on installing printer drivers.

Adjusting Options

Apple Computer has not enabled **Configure Printer...** for OS 10.3. Therefore, direct configuration of the printer driver is unavailable at this time.



Macintosh OS 10.3

Operation

This section explains how to change the printer's operation for specific print jobs.

Most applications allow the printer properties to be accessed from within the document print dialog.

This section will only detail options as they apply to the Oki Data printer driver.

Color Print Matching

The install utility provides a color matching profile for your printer. In general, using the **Color Matching** settings will provide reasonable default settings that produce good results for most documents.

Many applications have their own color settings and these may override the settings in the printer driver. Please refer to the documentation for your software application for details on how that particular program's color management functions.

Factors That Affect the Appearance of Printed Documents

If you wish to manually adjust the color settings in your printer driver, please be aware that color reproduction is a complex topic, and there are many factors to take into consideration. Some of the most important factors are listed below.

Differences between the Range of Colors a Monitor or Printer Can Reproduce

- Neither a printer nor a monitor is capable of reproducing the full range of colors visible to the human eye. Each device is restricted to a certain range of colors. Additionally, a printer cannot reproduce all of the colors displayed on a monitor and vice versa.
- Both devices use very different technologies to represent color. A monitor uses Red, Green and Blue (RGB) phosphors (or LCDs), a printer uses Cyan, Yellow, Magenta and Black (CMYK) toner or ink.
- A monitor can display very vivid colors such as intense reds and blues and these cannot be easily produced on any printer using toner or ink. Similarly, there are certain colors, (some yellows, for example), that can be printed, but cannot be displayed accurately on a monitor. This disparity between monitors and printers is often the main reason that printed colors do not match the colors displayed on screen.

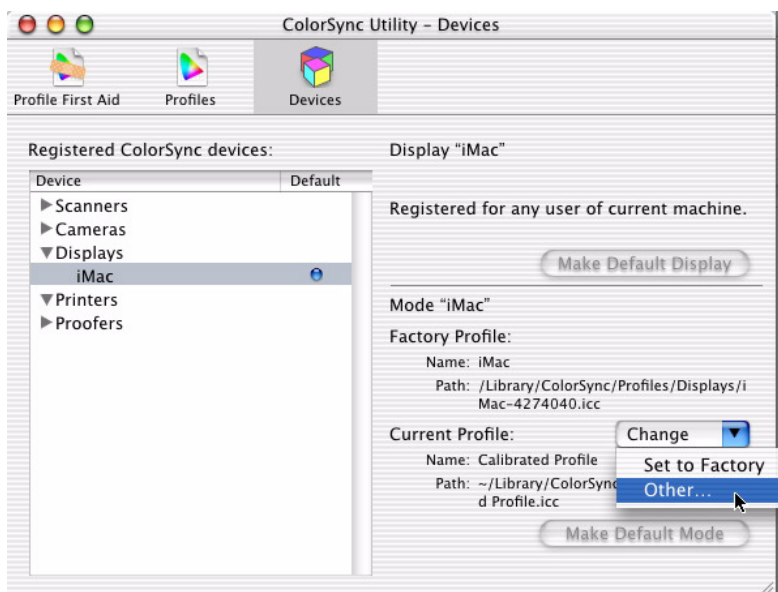
Viewing Conditions

A print can look very different under different lighting conditions. For example, the colors in a print may look different when viewed standing next to a sunlit window, compared to how they look under standard office fluorescent lighting.

Monitor Color Profile Select

Apple provides a **ColorSync Utility** → **Devices** that allows selection of the Oki Data supplied ICC color profile for your monitor. The profile will attempt to calibrate the monitor to more closely match the printer's output. However, merely selecting the profile will not automatically produce perfect results as many factors will contribute to the gamut of color selection.

1. Navigate to the utility by accessing your **Local Hard Drive** → **Applications** → **Utilities** → **ColorSync Utility** → **Devices**.
2. Click the arrow next to **Displays** and select your monitor (in this example it is iMac). For **Current Profile**, select **Other...**



3. From the **Profile** selection menu, click the desired Oki Data ICC Profile, then click **Open** to enable it.

Printer Driver Color Settings

The driver settings for Manual color can change the appearance of a printed document. There are several options available to help match the printed colors with those displayed on screen. These options are explained in subsequent sections.

To access the color matching options in the driver discussed below:

1. Access the printer settings page via the Print dialog from any application (usually **File** → **Print**).
2. Click the drop-down menu and select **Printer Features** and then select the **Feature Set 2** tab for **Color Setting**.

Monitor Settings

The brightness and contrast controls on your monitor can change how your document looks on-screen. You can calibrate your monitor's color regimen in **System Preferences** → **Displays** → **Color**. Additionally, your monitor color temperature influences how "warm" or "cool" the colors look.

NOTE

Several of the Color Matching options make reference to your monitor's Color Temperature. Many modern monitors allow the color temperature to be adjusted using the monitor's control panel.

There are several settings found on a typical monitor:

- **5000k* or D50**

Warmest; yellowish lighting, typically used in graphics arts environments.

- **6500k* or D65**

Cooler; approximates daylight conditions.

- **9300k*:**

Cool; the default setting for many monitors and television sets.

(*k = degrees Kelvin, a measurement of temperature)

How Your Software Application Displays Color

Some graphics applications such as Macromedia Freehand or Adobe Photoshop may display color differently from "office" applications such as Microsoft Word. Please see your application's online help or user manual for more information.

Paper Type

The type of paper used can also significantly affect the printed color. For example, a printout on recycled paper can look duller than one on specially formulated glossy paper.

Choosing a Color Matching Method

There is no one correct way to achieve a good color match between the document displayed on your monitor, and its printed equivalent. There are many factors involved in achieving accurate and reproducible color.

However, the following guidelines may help in achieving good color output from your printer. There are several suggested methods, depending on the type of document you are printing.

NOTE

These suggestions are for guidance only. Your results may vary depending on the application from which you are printing. Some applications will override any color matching settings in the printer driver without warning.

RGB or CMYK?

The guidelines for choosing a color matching method make distinctions between Red, Green, Blue (RGB) and Cyan, Magenta, Yellow, Black (CMYK).

Generally, most office documents you print will be in RGB format. This is the most common, and, if you do not know your document's color mode, assume that it is RGB.

Typically CMYK documents are only used in professional Desktop Publishing and Graphics applications.

Matching Photographic Images

RGB Only

The standard Color Matching (found in the printer driver under **Printer Features** → **Feature Set 2**) is generally a good choice. Select a matching method appropriate to your monitor.

RGB or CMYK

If you are printing photographic images from a graphics application such as Adobe Photoshop, you may be able to use Soft-Proofing to simulate the printed image on your monitor. To do this, you can use the ICC-Profiles provided by Oki Data, and then print using the ICC profiles as the Print Space (or Output space).

Matching Specific Colors

(For instance, a company logo.)

RGB Only

- OKI Color Matching, and the sRGB setting.
- PostScript Color Matching using the Absolute Colorimetric option.

RGB or CMYK

- If you are printing from a graphics application such as Adobe Photoshop, you may be able to use Soft-Proofing to simulate the printed image on your monitor. To do this, you can use the ICC-Profiles provided and then print using the ICC profiles as the Print Space (or Output space).
- Alternatively, use PostScript Color Matching with the Absolute Colorimetric setting.

Printing Vivid Colors

RGB Only

- Use OKI Color Matching, with either the Monitor 6500k Vivid, sRGB or Digital Camera settings.

RGB or CMYK

- Use PostScript Color Matching with the Saturation option.

Driver Options

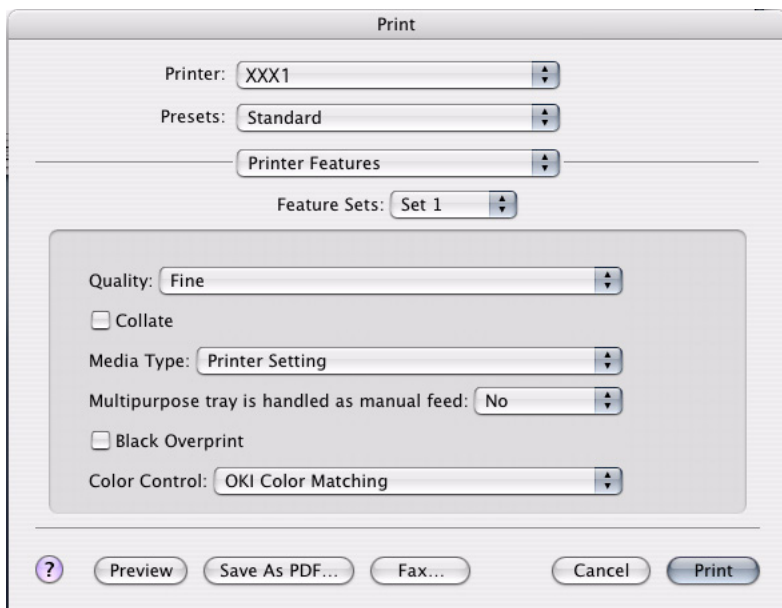
OKI Printer Features

To access **Feature Set 1**:

1. Click **File** → **Print** and select your printer.
2. Open the drop-down menu and select **Printer Features**.



Feature Set 1

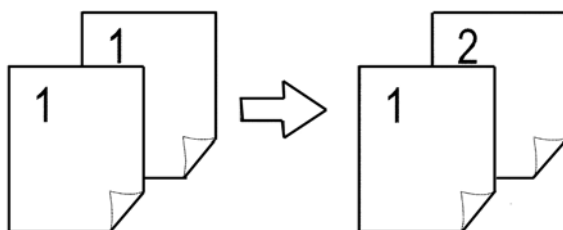


Select from the following options:

Quality

- Fast: 600 x 600 dpi, both models
- Fine:
 - Model C7350: 600 x 1200 dpi
 - Model C7559: 1200 x 1200 dpi

Collate



Collating can be carried out with or without a hard disk drive installed. However, printers with a hard disk drive provide greater performance. This option is useful when printing multiple copies of large documents and you want to print them in sequence.

NOTE

If your software application has a collate option, use it instead of the collate option in the printer driver.

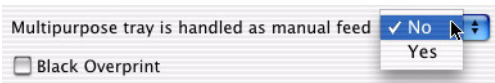
Media Type

Many options are available for selecting the media type. Normally the **Printer Setting** is used.



Any selection, other than **Printer Setting**, will override the printer's menu setting.

MP tray is handled as manual feed



Select the option desired: the default is No. The MP tray *cannot* be used for duplex printing.

Black Overprint

This option prevents registration errors and only works for 100% black text.

Click the checkbox to enable the option.

Color Control



OKI Color Matching

Affects *RGB data only*. This is the default setting and provides the fastest, best color matching for your printer.

Postscript Color Matching

Uses PostScript Color Rendering Dictionaries built into the printer, and affects both RGB and CMYK data.

PANTONE®

Uses PANTONE color definitions built into the printer.

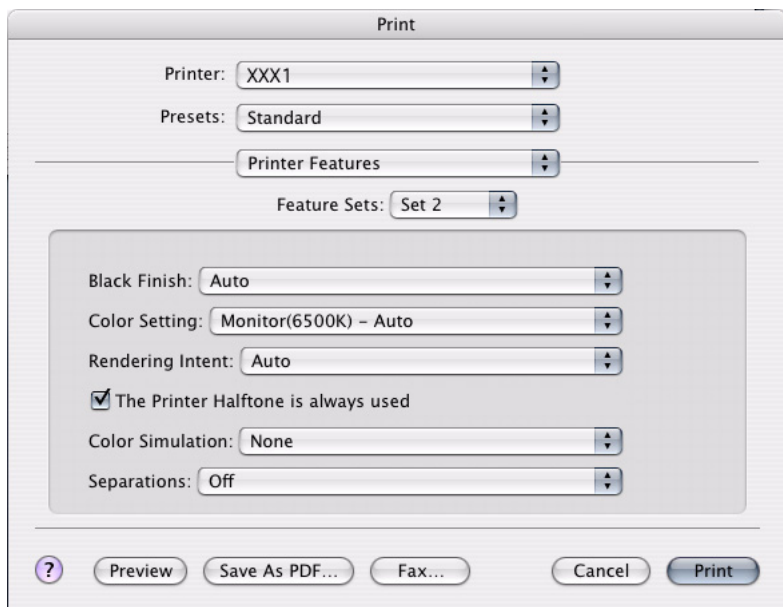
No Color Matching

No color correction occurs when selected. This option is beneficial when other matching regimens are used, specifically if you select a Color Simulation option.

Print In Grayscale

No color will print. The printer will interpret all colors as a variation of grays.

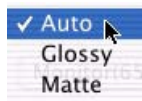
Feature Set 2



Select from the following options:

Black Finish

This setting determines Black Toner usage only.



Auto

This option is best for an office environment, with the printer determining which style is better.

Glossy

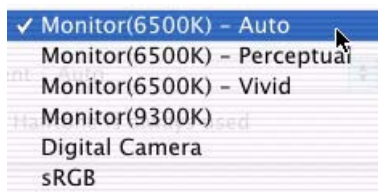
This option uses more CMYK and less black while producing a shinier black.

Matte

This option uses more black and less CMYK while producing a flatter black.

Color Setting

This option allows you to select your color settings as they appear on your monitor.



Monitor(6500k) Auto

The default setting that selects the best options for your printer. This selection works best for office situations.

Monitor (6500k) Perceptual

Optimized for printing photographs when using a monitor with a color temperature of 6500K. This is best for printing photographic images.

Monitor (6500k) Vivid

Optimized for printing bright colors when using a monitor with a color temperature of 6500K. Ideal for office graphics and text. Vivid or Digital Camera settings produce brightest colors.

Monitor (9300k)

Optimized for printing photographs when using a monitor with a color temperature of 6500K.

Digital Camera

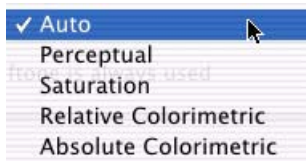
Optimized for printing photographs taken with a digital camera. This tends to produce prints with lighter and brighter colors. For some photographs, other settings may be better depending on the subjects and the conditions under which they were taken. Vivid or Digital Camera settings produce brightest colors.

sRGB

Optimized for matching specific colors, such as a company logo color. This option attempts to simulate RGB color. The colors within the printer's color gamut are printed without any modification, and only colors that fall outside the printable colors are modified.

Rendering Intent

When a document is printed, a conversion takes place from the document's color space to the printer color space. The rendering intents are essentially a set of rules that determine how this color conversion takes place.



Auto

The best default select as this selects the optimal settings for a general office environment.

Perceptual

Best choice for printing photographs. Compresses the source gamut into the printer's gamut whilst maintaining the overall appearance of an image. This may change the overall appearance of an image as all the colors are shifted together.

Saturation

Best choice for printing bright and saturated colors if you don't necessarily care how accurate the colors are. This makes it the recommended choice for graphs, charts, diagrams, etc. Maps fully saturated colors in the source gamut to fully saturated colors in the printer's gamut.

Relative Colorimetric

Good for proofing CMYK color images on a desktop printer. Much like Absolute Colorimetric, except that it scales the source white to the (usually) paper white; i.e. unlike Absolute Colorimetric, this attempts to take the paper white into account.

Absolute Colorimetric

Best for printing solid colors and tints, such as Company logos etc. Matches colors common to both devices exactly, and clips the out of gamut colors to their nearest printed equivalent. Tries to print white as it appears on screen. The white of a monitor is often very different from paper white, so this may result in color casts, especially in the lighter areas of an image.

Printer Halftone

This option prevents the halftone of a high-end graphic application from printing. Click the checkbox to enable the option.

☒ The Printer Halftone is always used

Color Simulation

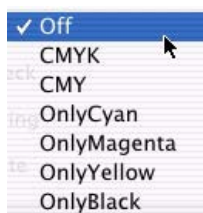
Affects CMYK output only and is usually used in offset printer environments only.



This option simulates what the output will look on a printing press using the ink types SWOP, Euroscale or Japan. If using CMYK Ink Simulation, it is recommended that you switch off all other Printer Color Matching by selecting the No Color Matching option under the Color Match option in the printer driver.

Separations

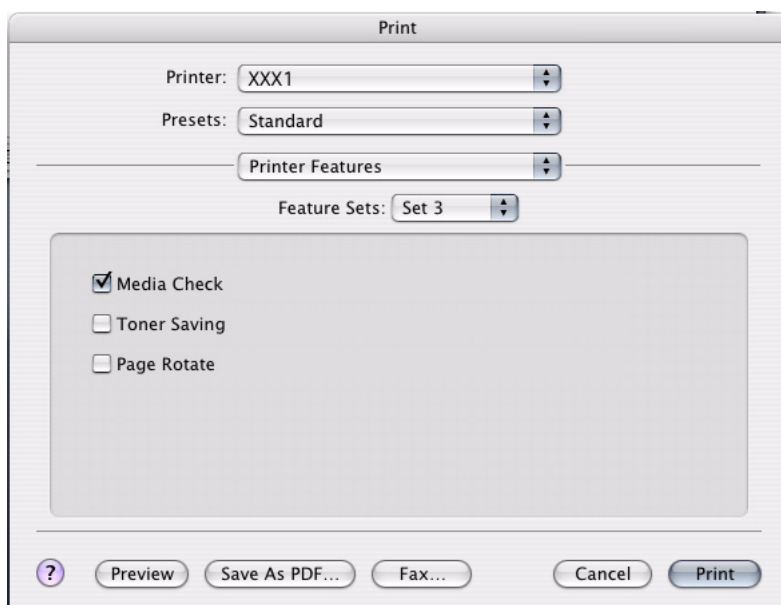
This option affects output only, allowing you to print all colors or separate plates.



NOTE

You must select a non-generic PostScript Printer Description (PPD) file for a printer that supports color separations.

Feature Set 3



Select from the following options:

Media Check

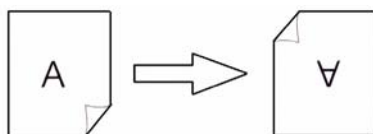
Sets whether the printer checks the matching of paper size to that of the tray. Only standard sizes are checked.

Toner Saving

Checking this enables toner saving but reduce print quality.

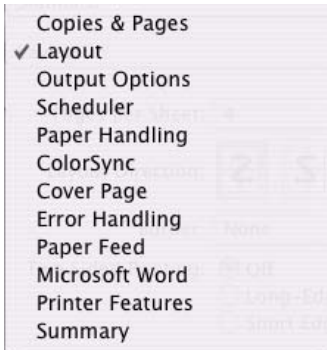
Page Rotate

Checking this rotates the printed material on the page 180 degrees.

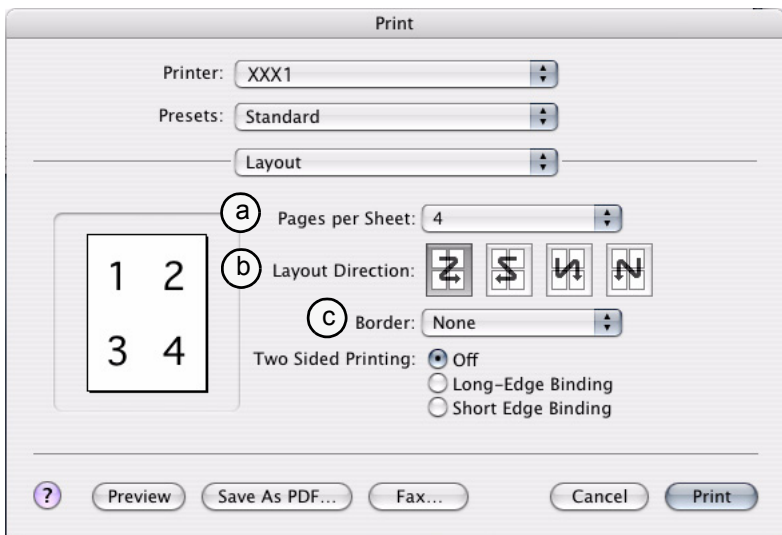


Printing Multiple Pages on One Sheet (N-up Printing)

1. Click **File** → **Print** and select your printer.
2. Open the drop-down menu and select **Layout**.



3. From the Layout screen, select the options desired.



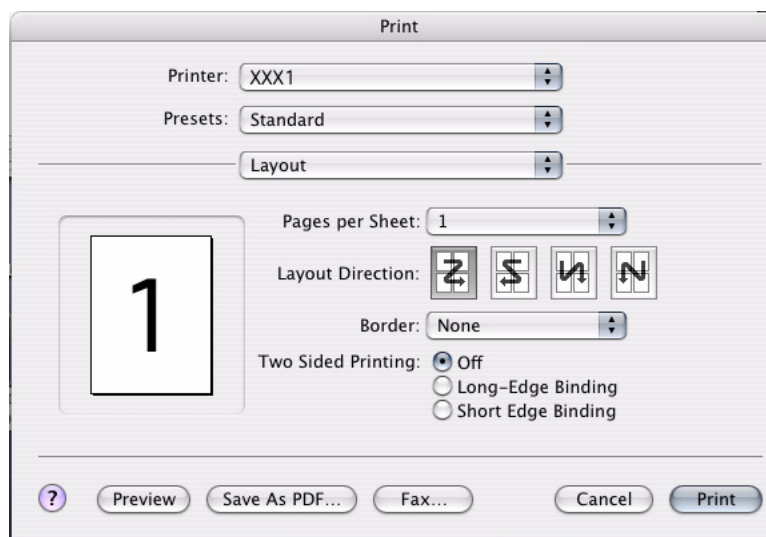
- a. For Multiple Pages, access **Pages per sheet**
- b. Select the desired **Layout Direction**.
- c. Select a **Border** between the sheets, if desired.

Duplex Printing (Printing on Both Sides of the Paper)

1. Click **File** → **Print** and select your printer.
2. Open the drop-down menu and select **Layout**.



3. Under **Two Sided Printing**, select the binding.



Long Edge Binding

Pages per Sheet: 1

Layout Direction: Z S N N

Border: None

Two Sided Printing: ☐ Off ☒ Long-Edge Binding ☐ Short Edge Binding

Short Edge Binding

Pages per Sheet: 1

Layout Direction: Z S N N

Border: None

Two Sided Printing: ☐ Off ☐ Long-Edge Binding ☒ Short Edge Binding

NOTES

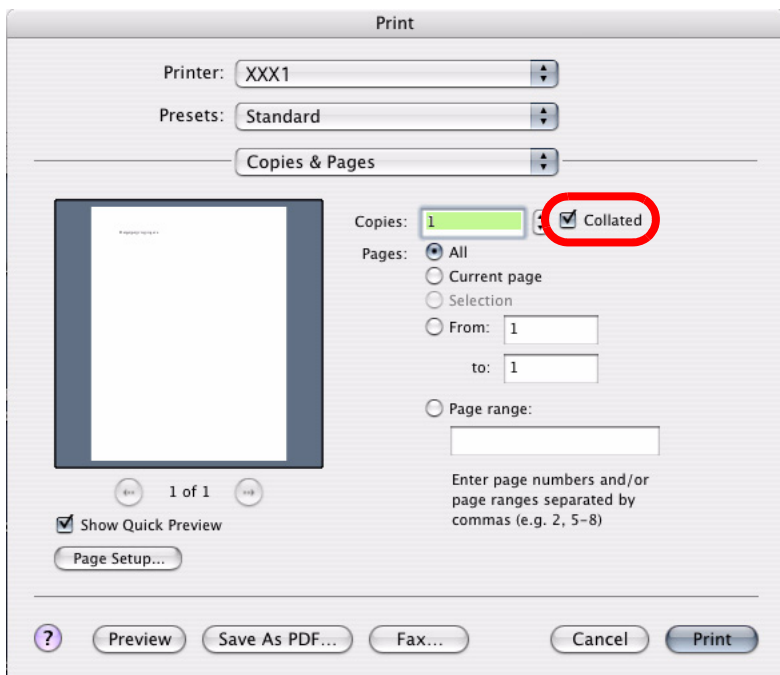
- Duplex printing can only be carried out on standard paper sizes and paper weights between 20 and 28 lb. (75 and 105 g/m²).
- The optional duplex unit must be installed in the printer and enabled before duplex printing can be carried out.
- Paper must be loaded into the paper tray with the print side facing upwards. The multi purpose tray cannot be used for duplex printing.

Collating

Collating can be carried out with or without the optional hard disk drive. However, using the HDD improves performance.

If the software application being used has a collate print option, it is recommended to use only one collate option to prevent any conflicts in printing, i.e. collate from the software application or collate from the printer driver.

1. Click **File** → **Print** and select your printer.
2. The **Copies & Pages** dialog box should display. If not, select **Copies & Pages** from the menu.
3. Select **Collated**.



4. Click **Print**.

Mac OS 10.3

Utilities

With the exception of Job Accounting, the utilities on the Drivers CD are unavailable for Mac OS 10.3 and will only run on Mac 9.x or Classic OS.

Once the Job Accounting utility has been set up by your Network Administrator, it is transparent to the operation of the printer driver on your OS 10.3 system.

For more information on Job Accounting, see the “User’s Guide, Windows” on the Manuals CD supplied with your printer.