

CHAPTER

2

Introducing Operating Systems

**In this chapter,
you will learn:**

- About the various operating systems and the differences between them
- About the components of Windows operating systems
- How operating systems interface with users, files and folders, applications, and hardware

In Chapter 1, you were introduced to the different hardware devices. In this chapter, you'll learn about the different operating systems, how they are designed and work, and what they do. You'll learn about the different components of an OS and see how an OS provides the interface that users and applications need to command and use hardware devices. You'll learn to use several Windows tools and utilities that are useful to examine a system, change desktop settings, and view and manage some hardware devices.

As you work through this chapter, you'll learn that computer systems contain both hardware and software and that it's important for you as a computer technician to understand how they work together. Although the physical hardware is the visible part of a computer system, the software is the intelligence of the system that makes it possible for hardware components to work.

OPERATING SYSTEMS PAST AND PRESENT

An **operating system (OS)** is software that controls a computer. It manages hardware, runs applications, provides an interface for users, and stores, retrieves, and manipulates files. In general, you can think of an operating system as the middleman between applications and hardware, between the user and hardware, and between the user and applications (see Figure 2-1).

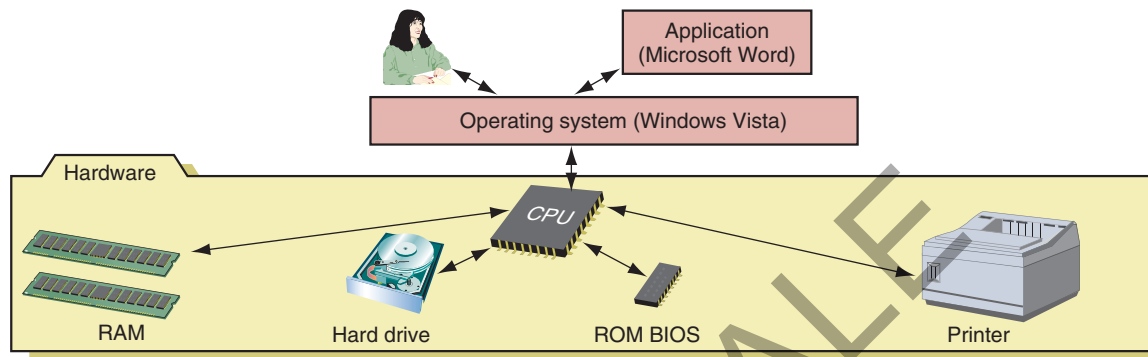


Figure 2-1 Users and applications depend on the OS to relate to all applications and hardware components
Courtesy: Course Technology/Cengage Learning

Several applications might be installed on a computer to meet various user needs, but a computer really needs only one operating system. As a PC support technician, you should be aware of the older and current operating systems and how these operating systems have evolved.

DOS (DISK OPERATING SYSTEM)

In 1986, MS-DOS (also known as DOS) was introduced and quickly became the most popular OS among IBM computers and IBM-compatible computers using the Intel 8086 processors. Figure 2-2 shows a computer screen using the DOS operating system. In those days, all computer screens used text and no graphics. DOS is outdated as a viable option for a desktop computer operating system today. However, you might occasionally encounter a diagnostic utility used to fix the most stubborn hardware or software problem that is booted from a floppy disk or CD that uses the DOS operating system.

```

C:\>DIR \GAME

Volume in drive C has no label
Volume Serial Number is 0F52-09FC
Directory of C:\GAME

.                <DIR>      02-18-93   4:50a
..               <DIR>      02-18-93   4:50a
CHESS            <DIR>      02-18-93   4:50a
NUKE             <DIR>      02-18-93   4:51a
PENTE           <DIR>      02-18-93   4:52a
NETRIS          <DIR>      02-18-93   4:54a
BEYOND          <DIR>      02-18-93   4:54a
7 file(s)
0 bytes
3273344 bytes free

C:\>

```

Figure 2-2 DOS provides a command-line prompt to receive user commands
Courtesy: Course Technology/Cengage Learning

DOS WITH WINDOWS 3.X

Early versions of Windows, including Windows 3.1 and Windows 3.11 (collectively referred to as Windows 3.x) used DOS as the operating system. Windows 3.x had to use DOS because Windows 3.x didn't perform OS functions, but simply served as a user-friendly intermediate program between DOS, applications, and the user (see Figure 2-3). Windows 3.x offered a graphical user interface, the Windows desktop, the windows concept, and the ability to keep more than one application open at the same time. A **graphical user interface (GUI**; pronounced "GOO-ee") is an interface that uses graphics as compared to a command-driven interface. A **desktop** is the initial screen that is displayed when an OS has a GUI interface loaded. All these concepts are still with us today.

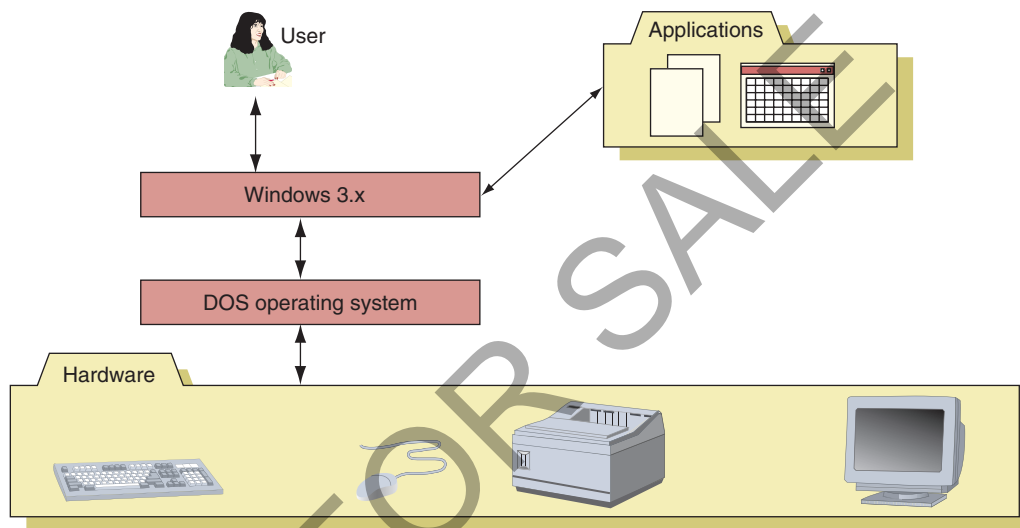


Figure 2-3 Windows 3.x was layered between DOS and the user and applications to provide a graphics interface for the user and a multitasking environment for applications
Courtesy: Course Technology/Cengage Learning

WINDOWS 9X/ME

Windows 95, Windows 98, and Windows Me, collectively called Windows 9x/Me, used some DOS programs as part of the underlying OS (called a DOS core), and therefore had some DOS characteristics. However, these were true operating systems that provided a user-friendly interface shown in Figure 2-4. Because of the DOS core, technicians sometimes used a DOS startup disk to troubleshoot Windows 9x. To learn more about Windows 9x/Me, see the content "Supporting Windows 9x/Me" and the content "Windows 9x/Me Commands and Startup Disk" on the CD that accompanies this book.

WINDOWS NT

Windows NT (New Technology) came in two versions: Windows NT Workstation and Windows NT Server. The workstation version was used on high-end corporate or engineering desktop computers, and the server version was used to control a network. Windows NT corrected many problems with Windows 9x/Me because it completely rewrote the OS core, totally eliminating the DOS core, and introduced many new problems of its own that were later solved by Windows 2000 and Windows XP.

Windows NT was the first Windows OS that did all its processing using 32 bits at a time as compared to DOS, which processed 16 bits at a time and Windows 9x/Me, which used a combination of 16-bit and 32-bit processing.

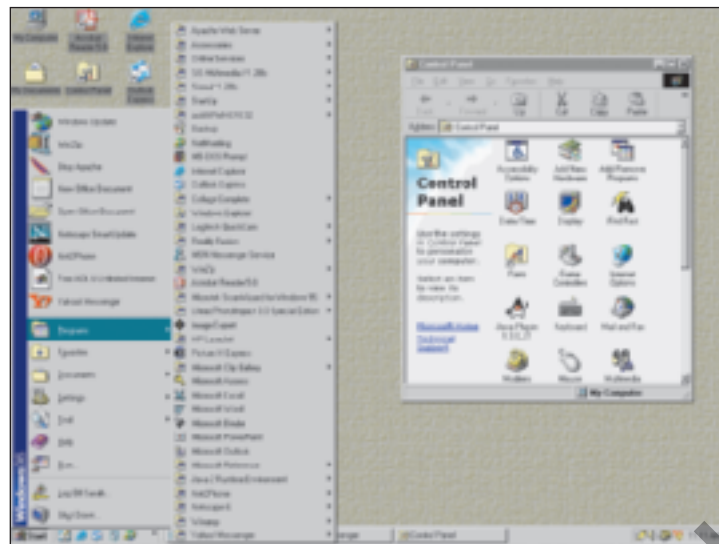


Figure 2-4 Windows 98 SE desktop
Courtesy: Course Technology/Cengage Learning

WINDOWS 2000

Windows 2000 was an upgrade of Windows NT, and also came in several versions, some designed for the desktop and others designed for high-end servers. Windows 2000 Professional was popular as an OS for the corporate desktop. Windows 2000 Server, Advanced Server, and Datacenter Server are network server OSs. Windows 2000 offered several improvements over Windows NT, including a more stable environment, support for Plug and Play, Device Manager, Recovery Console, Active Directory, better network support, and features specifically targeting notebook computers. The Windows 2000 Professional desktop is shown in Figure 2-5.

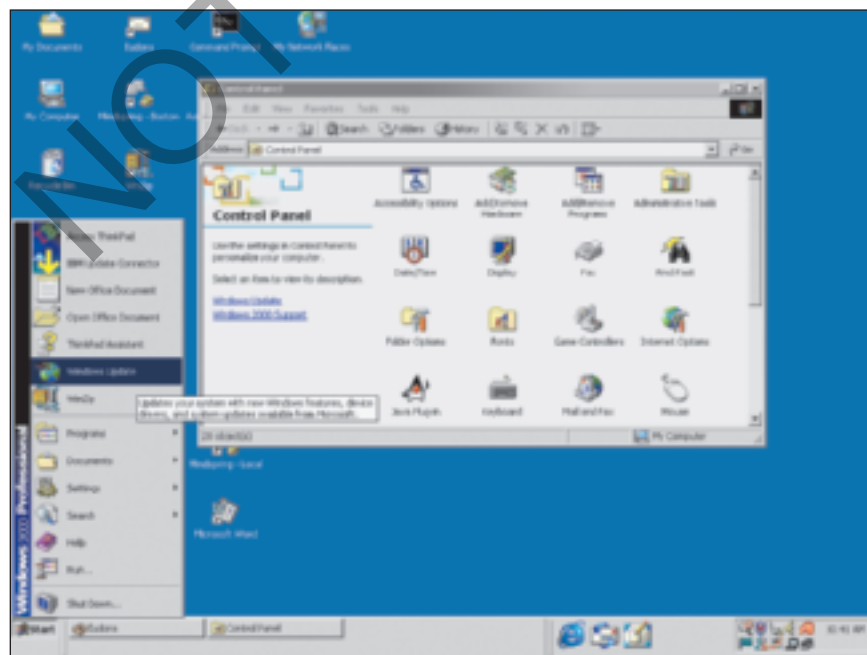


Figure 2-5 The Windows 2000 Professional desktop
Courtesy: Course Technology/Cengage Learning

Microsoft didn't target Windows 2000 to the home computer and game computer market because Windows 9x/Me was still serving those markets. Also, Microsoft did not make a commitment for Windows 2000 to be **backward-compatible** with older software and hardware. Therefore, many hardware devices and applications that worked under Windows 9x/Me did not work under Windows 2000.

Windows 2000 is considered a dying OS, although as a PC support technician you still need to know how to support it because it is still in use. However, you cannot buy a new license for it, and Microsoft no longer supports it.

A+ Tip

The only operating systems covered on the A+ exams are Windows 2000, Windows XP, and Windows Vista.

WINDOWS XP

Windows XP is an upgrade of Windows 2000 and attempts to integrate Windows 9x/Me and 2000, while providing added support for multimedia and networking technologies. The two main versions are Windows XP Home Edition and Windows XP Professional, though other less significant editions include Windows XP Media Center Edition, Windows XP Tablet PC Edition, and Windows XP Professional x64 Edition.

The Windows XP desktop (see Figure 2-6) has a different look from the desktops for earlier Windows. Windows XP is the first Windows OS to allow multiple users to log on simultaneously to the OS, each with their own applications open. Windows Messenger and Windows Media Player are inherent parts of Windows XP. And XP includes several new security features, including Windows Firewall.

Although Windows XP was first released with some bugs, the second service pack (Service Pack 2) resolved most of these problems. A **service pack** is a major update or fix to an OS occasionally released by Microsoft. Minor updates or fixes that are released more frequently are called **patches**. Windows XP has undergone three service packs, making it an extremely



Figure 2-6 The Windows XP desktop and Start menu
Courtesy: Course Technology/Cengage Learning

stable OS, and is popular in both the home and corporate markets. Because it does not require as much hardware resources as Windows Vista and most compatibility issues and bugs have been resolved, many people and corporations still prefer it over Windows Vista. Because of consumers' demands, Microsoft has been forced to extend support for XP long past their initial timeframe. Currently, manufacturers can still purchase a license for a new PC (called an **original equipment manufacturer (OEM) license**). However, these OEM licenses are about to become available only for low-end PCs that cannot support Windows Vista. Microsoft still publishes services packs and patches for XP.

WINDOWS VISTA

Windows Vista, an upgrade to Windows XP, is the latest Windows desktop operating system by Microsoft. Vista has a new 3D user interface called the **Aero user interface**, which is not available for all versions of Vista and requires 1 GB of RAM and a video card or on-board video that supports the DirectX 9 graphics standard and has at least 128 MB of graphics memory. The Windows Vista desktop and Start menu are shown in Figure 2-7. Notice the Windows XP Start button has been replaced by the Vista sphere with a Windows flag.

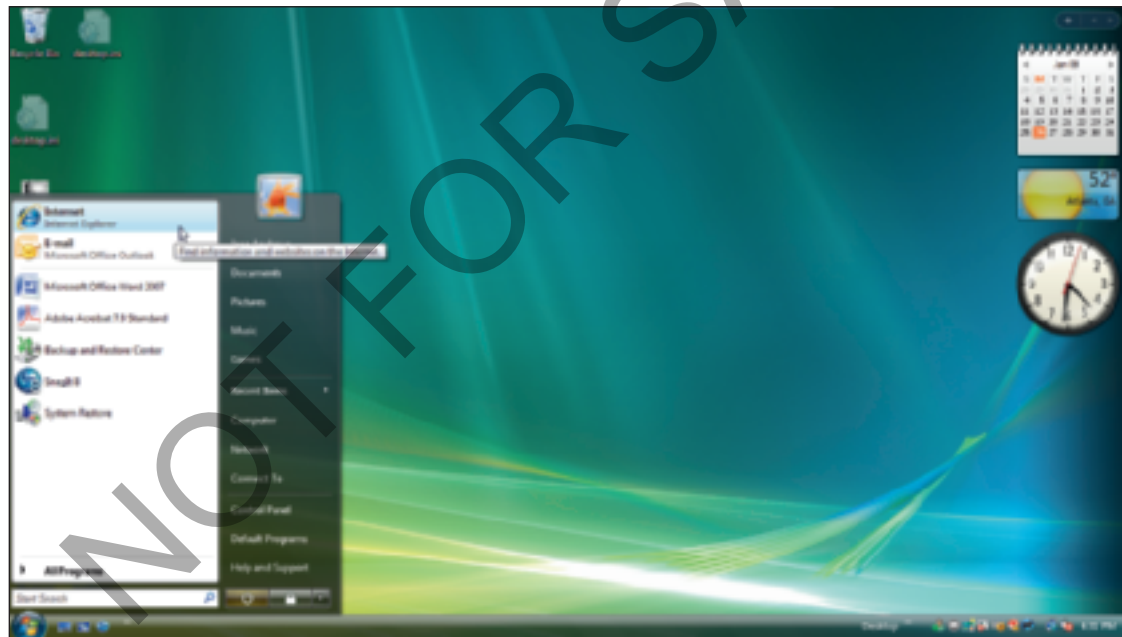


Figure 2-7 Windows Vista desktop and Start menu
Courtesy: Course Technology/Cengage Learning

Vista was better tested than XP was before its release, therefore Vista did not present as many initial problems as did XP. However, the greatest complaints against Vista are the lack of compatibility with older hardware and software (called legacy hardware and software), the large amount of computer resources that Vista requires, and its slow performance. The first problem is partly caused by hardware manufacturers not providing Vista drivers for their devices that were originally sold with XP drivers. The second problem means that many low-end desktop and laptop computers can't run Vista. And the slow performance of Vista is partly due to the many unnecessary features (fluff) it offers; these features weigh heavy on system resources.

Vista comes in five versions: Windows Vista Home Basic, Home Premium, Business, Enterprise, and Ultimate. (Vista Starter is a sixth version available only to developing nations.) Also, Vista comes in 32-bit versions and 64-bit versions; an explanation of the differences between these versions is covered later in the chapter.

WINDOWS 7

With many frustrations over Windows Vista still not resolved, some consumers have dubbed Windows 7 “the ultimate Vista fix.” Windows 7 is the next generation of Microsoft operating systems, and was due to be released not long after the printing of this book. Now that technicians have taken a first look at Windows 7 and have compared it to Vista, it appears that Windows 7 will perform better, be more compatible with legacy hardware and software, and provide a leaner and simpler user interface.

It is expected that Windows 7 will run on netbooks that currently run only on Windows XP or Linux. A **netbook** is a low-end inexpensive laptop with a small 9- or 10-inch screen and no optical drive. Netbooks are generally used for Web browsing, e-mail, and word processing by users on the go.

MAC OS


Currently, the Mac OS, which has its roots in the Unix OS, is available only on Macintosh computers from the Apple Corporation (www.apple.com). The Mac and the Mac OS were first introduced in 1984. The latest OS is Mac OS X (ten), which has had several releases. The latest release is called Mac OS X Leopard. Figure 2-8 shows the Mac OS X Leopard desktop with a browser open.



Figure 2-8 The Mac OS X Leopard desktop and browser window
Courtesy: Course Technology/Cengage Learning

At one time, all Macintosh computers were built using PowerPC processors by IBM or Motorola. Macs now use Intel processors, which make it possible for Windows to run on a Mac. Boot Camp software by Apple can be used to install Windows on a Mac computer as a dual boot with Mac OS X. (A **dual boot** makes it possible to boot a computer into one of two installed OSs.) Also, an application called VMWare Fusion can be installed on a Mac; the application creates a virtual machine on the Mac. (A **virtual machine (VM)** is an environment created by software that works as though it is a standalone computer system. A VM is a logical computer within a physical computer. Software testers often use multiple VMs on a single PC to test software under different OSs.) Windows is then installed on this virtual machine, making it possible to run both Mac OS X and Windows at the same time without having to reboot the system. Applications written for Windows can then be installed in the virtual machine environment. You will learn to use a virtual machine in a project at the end of Chapter 12.

Because it is stable and easy to use, the Mac OS has been popular in educational environments, from elementary school through the university level. It also provides excellent support for graphics and multimedia applications and is popular in the graphics and musical markets. Currently, about ten percent of personal computers sold today are Macs. In the past, a Mac was more expensive than a comparable Windows computer and applications for the Mac were limited. But now costs are about the same and tons of Mac applications exist, many of them free. Macs are beginning to gain ground in both the corporate and home markets because Macs are stable and fun to use, costs are down, and software is more available.

 **Notes** You can learn more about the Mac OS by reading the content, "Introducing the Mac OS," which you can find on the CD that accompanies this book.

LINUX

Linux is a variation of Unix that was created by Linus Torvalds when he was a student at the University of Helsinki in Finland. Versions of this OS are available for free, and all the underlying programming instructions (called source code) are also freely distributed. Like Unix, Linux is distributed by several different companies, whose versions of Linux are sometimes called **distributions**. Popular distributions of Linux include SuSE (www.novell.com/linux/suse), RedHat (www.redhat.com), TurboLinux (www.turbolinux.com), Slackware Linux (www.slackware.com), and Ubuntu (www.ubuntu.com).

 **A+ Exam Tip** The A+ exams do not cover Linux, the Mac OS, or server operating systems.

Network services such as a Web server or e-mail server often are provided by a computer running the Linux operating system. Linux is well suited to support various types of server applications. Because Linux is extremely reliable and does not require a lot of computing power, it is sometimes used as a desktop OS. It is not as popular for this purpose because it is not easy to install or use and fewer Linux applications exist, as compared to those written for Windows or the Mac OS. Linux is also used on netbooks because it requires less system resources than Windows. (A technician would say it has a small footprint.) Recently, Linux has gained popularity as an embedded operating system on mobile devices such as smart phones. Linux is an excellent training tool for learning Unix.

A **shell** is the portion of an OS that relates to the user and to applications. The first Linux and Unix shells consisted of commands entered at a command prompt. Two popular command-line shells for Unix and Linux are the older Bourne shell and the newer Bourne-Again shell (BASH). But many users prefer a Windows-style GUI desktop. These GUI shells are built using a technology called X Windows. The most popular GUI shells are GNOME, KDE, and Xfce. A typical Linux desktop is shown in Figure 2-9.

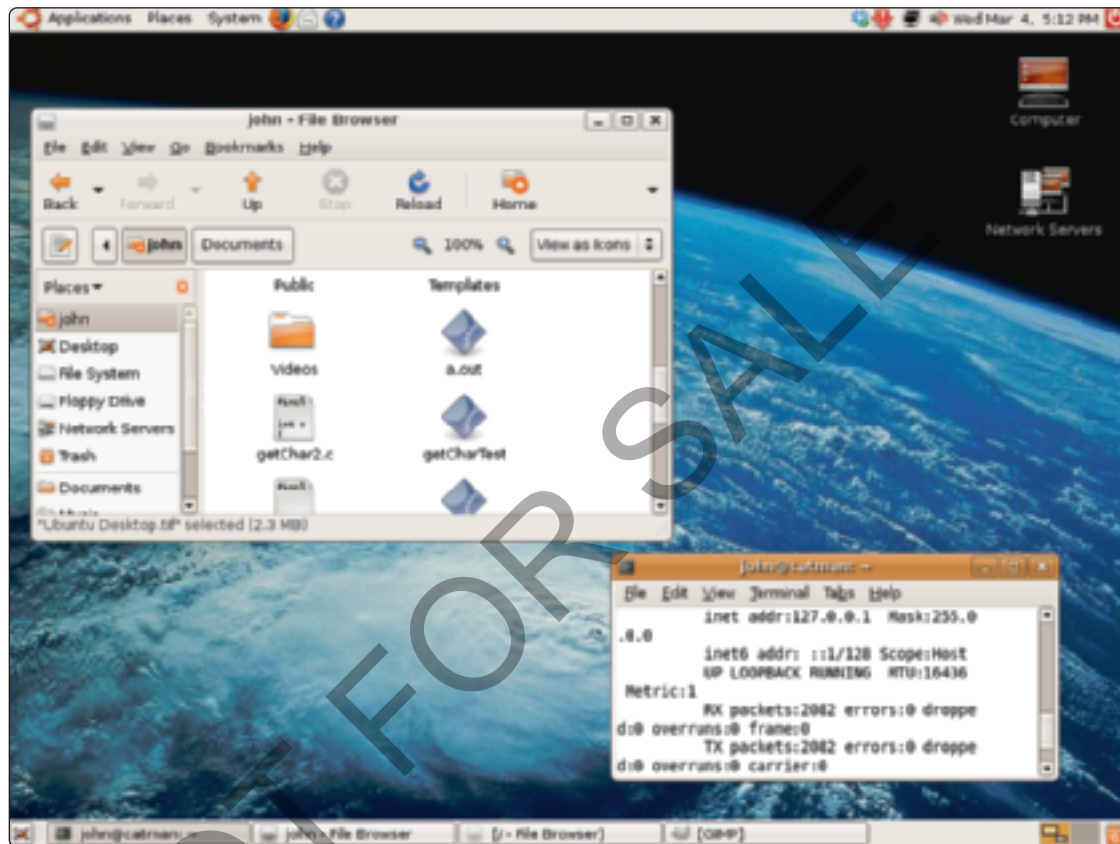


Figure 2-9 A desktop using the Ubuntu distribution of Linux
Courtesy: Course Technology/Cengage Learning

Notes You can find out more about Linux by reading the content, “Introducing Linux,” on the CD that accompanies this book or by visiting the web site, www.linux.org.

Now that you know a little about operating systems in general, let’s turn our attention to learning about the Windows 2000/XP/Vista operating system.

HOW WINDOWS 2000/XP/VISTA WORKS

Windows 2000, XP, and Vista are three evolutions of the same basic operating system. Therefore, they have many things in common. In this part of the chapter, we’ll look under the hood of these OSs to see how they are built, what are the main components, and how the OS interfaces with users, applications, data, and hardware. We begin our discussion by looking at the four main functions of any OS, and then we’ll look at how Windows accomplishes these four functions.

WHAT AN OPERATING SYSTEM DOES

Although there are important differences among them, all operating systems share the following four main functions:

▲ *Function 1.* Provide a user interface

- Performing housekeeping procedures requested by the user, often concerning secondary storage devices, such as reorganizing a hard drive, deleting files, copying files, and changing the system date
- Providing a way for the user to manage the desktop, hardware, applications, and data

▲ *Function 2.* Manage files

- Managing files on hard drives, DVD drives, CD drives, floppy drives, and other drives
- Creating, storing, retrieving, deleting, and moving files

▲ *Function 3.* Manage hardware

- Managing the BIOS (programs permanently stored on hardware devices)
- Managing memory, which is a temporary place to store data and instructions as they are being processed
- Diagnosing problems with software and hardware
- Interfacing between hardware and software (that is, interpreting application software needs to the hardware and interpreting hardware needs to application software)

▲ *Function 4.* Manage applications

- Installing and uninstalling applications
- Running applications and managing the interface to the hardware on behalf of an application

COMPONENTS OF WINDOWS

Every operating system has three main internal components: the shell, the kernel, and configuration data. Recall that a shell is the portion of an OS that relates to the user and to applications; the **kernel** is responsible for interacting with hardware. Configuration data is information the OS keeps about hardware, applications, data, and users. As a support technician, you don't need to understand all of how they work, but it does help to know some basic concepts. Figure 2-10 shows how the shell and kernel relate to users, applications, and hardware. Use the diagram as a reference for this discussion of how the components of Windows work.

THE WINDOWS SHELL

The shell provides a way for the user to do such things as select music to burn to a CD, install an application, or change the wallpaper on the Windows desktop. The shell does this using various interface tools such as Windows Explorer, the Control Panel, or My Computer, which can have command, menu, or icon-driven interfaces for the user. For applications, the shell provides commands and procedures that applications can call on to do such things as print a spreadsheet, read from a database, or display a photograph onscreen.

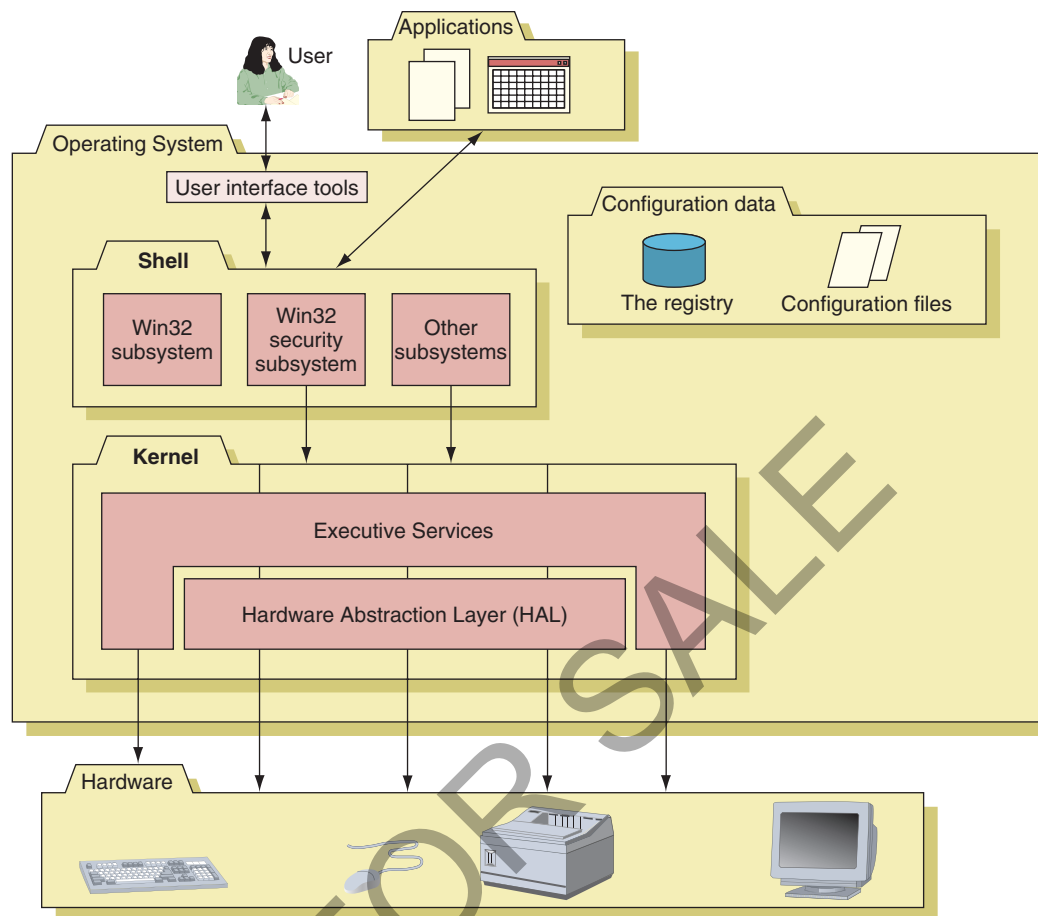


Figure 2-10 Inside an operating system, different components perform various functions
 Courtesy: Course Technology/Cengage Learning

The shell is made up of several subsystems that all operate in **user mode**, which means these subsystems have only limited access to system information and can access hardware only through other OS services. One of these subsystems, the Win32 security subsystem, provides logon to the system and other security functions, including privileges for file access. All applications relate to Windows by way of the Win32 subsystem.

THE WINDOWS KERNEL

The kernel, or core, of the OS is responsible for interacting with hardware. It has more power to communicate with hardware devices than the shell has, and operates in **kernel mode**. Therefore, applications operating under the OS cannot get to hardware devices without the shell passing those requests to the kernel. This module approach that says, “You do your job and I’ll do mine, and we won’t mess with each other’s work,” provides for a more stable system. If you think of an OS as a restaurant, the shell is like the hosts and waiters that serve customers, and the kernel is like the chefs and kitchen staff. Hosts and waiters are responsible for customer interaction but aren’t allowed in the kitchen where the food is prepared.

The kernel has two main components. The **HAL (hardware abstraction layer)** is the layer closest to the hardware and the **executive services** interface between the subsystems in user mode and the HAL. Executive services components manage hardware resources by way of the HAL and device drivers. When Windows is first installed, it builds the

HAL based on the type of CPU installed. The HAL cannot be moved from one computer to another, which is one reason you cannot copy a Windows installation from one computer to another.

CONFIGURATION DATA

An operating system needs a place to keep hardware and software configuration information, user preferences, and application settings. This information is used when the OS is first loaded and when needed by hardware, applications, and users. Windows uses a database called the **registry** for most of this information. In addition, Windows keeps some data in text files called **initialization files**, which often have an .ini or .inf file extension. For example, an application might store in a text file or in the registry the settings preferred by the last user, such as background color, font, and text size. When the application is launched, the first thing it does is read the registry or text file and then loads the user's preferred settings.

HOW WINDOWS MANAGES APPLICATIONS

When an application is first installed, its program files are normally stored on the hard drive. When the application is launched, the program is copied from the hard drive into memory and there it is called a process. A **process** is a program that is running, together with the system resources assigned to it. System resources might include other programs it has started and memory addresses to hold its data. When the process makes a request for resources to be used, this request is made to the Win32 subsystem and is called a thread. A **thread** is a single task, such as the task of printing a file, that the process requests from the kernel. Figure 2-11 shows two threads in action, which is called multithreading. Sometimes a process is called an instance, such as when you say to a user, "Open two instances of Internet Explorer." Technically, you are saying to open two Internet Explorer processes.

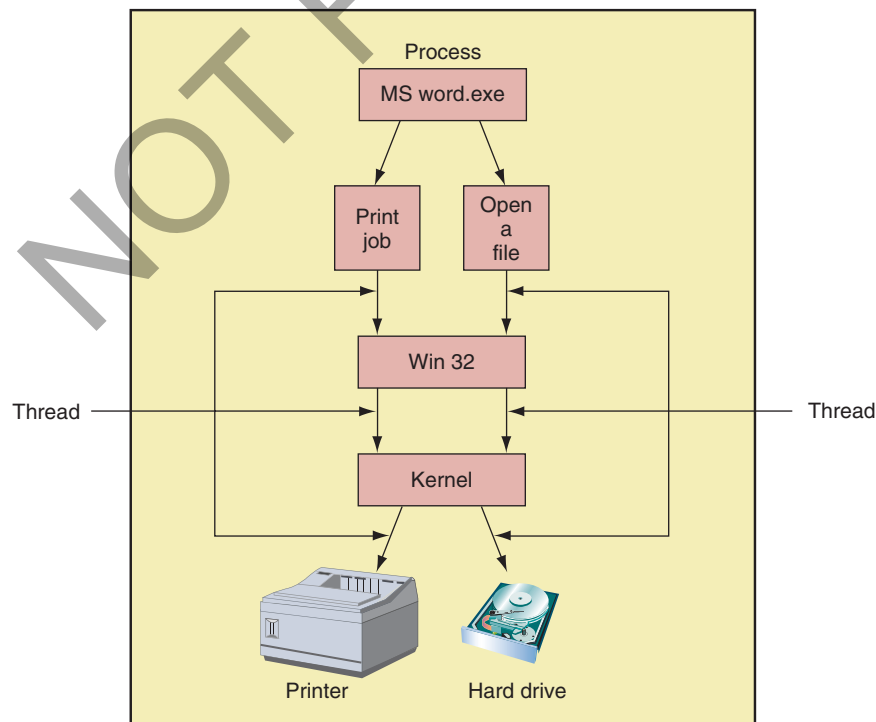


Figure 2-11 A process with two threads
Courtesy: Course Technology/Cengage Learning

HOW WINDOWS MANAGES HARDWARE

The kernel uses device drivers to communicate with a hardware device. **Device drivers** are small programs stored on the hard drive that tell the computer how to communicate with a specific hardware device such as a printer, network card, or modem. These drivers are installed on the hard drive when the OS is first installed, or when new hardware is added to the system.

The OS provides some device drivers, and the manufacturer of the hardware device provides others. You also need to know that when a computer is first turned on, it uses some devices such as the keyboard, monitor, and hard drive before the OS starts up. In this situation, the system BIOS provides the instructions to the CPU to communicate with these devices. Recall from Chapter 1 that the system BIOS uses settings stored in the CMOS RAM chip on the motherboard to know how to start the system.

Later during the boot process, the OS is started, and it then uses device drivers to communicate with these same devices, although there still might be limited use of the system BIOS. Figure 2-12 shows that the kernel communicates with hardware by way of its own drivers, manufacturer drivers, or system BIOS.

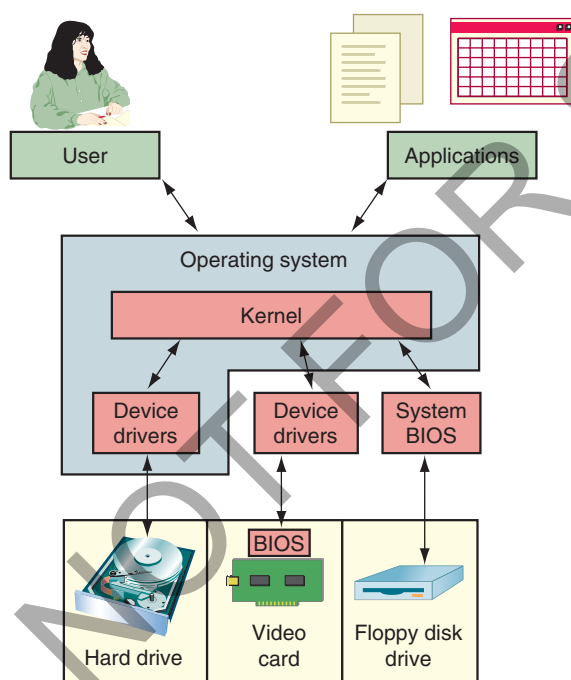


Figure 2-12 An OS relates to hardware by way of device drivers and possibly system BIOS
 Courtesy: Course Technology/Cengage Learning

A device driver is written to work for a specific OS, such as Windows XP or Windows Vista. Therefore, when you upgrade a computer from Windows XP to Windows Vista, it is necessary to obtain Vista drivers for each installed device. Manufacturers usually publish the latest device drivers on their Web sites.

When you purchase a printer, DVD drive, Zip drive, digital camera, scanner, or other hardware device, bundled with the device might be a CD that contains the device drivers (see Figure 2-13). Sometimes, the device also comes bundled with a user manual and applications software that interfaces with the device. You use the operating system to install the device drivers so it will have the necessary software to control the device. You will learn how to install devices and their drivers in Chapter 9.



Figure 2-13 A device such as this video card comes packaged with its device drivers stored on a CD; alternately, you can use device drivers built into the OS
 Courtesy: Course Technology/Cengage Learning

Notes Device drivers come from a number of sources. Some come with and are part of the operating system, some come with hardware devices when they are purchased, and some are provided for downloading over the Internet from a device manufacturer's Web site.

So now you have been introduced to four types of software: the operating system, applications, device drivers, and BIOS. Every software program is considered to be one of these four types of software.

HOW MANY BITS AT A TIME?

The CPU (Central Processing Unit), also called a processor, partly determines which operating system can be installed. One major consideration is the number of bits a CPU processes at a time. All desktop and laptop processors sold today from either Intel or AMD can process 64 bits at a time, but older processors handled only 32 bits. To know which type of operating system to install, you need to be aware of three categories of processors currently used on desktop and laptop computers:

- ▲ *32-bit processors.* These are known as x86 processors because Intel used the number 86 in the model number of these earlier processors. These processors must use a 32-bit operating system.
- ▲ *Processors that use underlying 32-bit processing with 64-bit instructions.* These hybrid processors are known as x86-64bit processors. AMD was the first to produce one (the Athlon 64) and called the technology AMD64. Intel followed with a version of its Pentium 4 processors and called the technology Extended Memory 64 Technology (EM64T). Because of their hybrid nature, these processors can handle a 32-bit OS or a 64-bit OS. All desktop or laptop processors made after 2007 are of this type.
- ▲ *64-bit processors.* Intel makes several 64-bit processors for workstations or servers that use fully implemented 64-bit processing, including the Itanium and Xeon processors.

A+
220-701
3.1

2

A+ 220-701

Intel calls the technology IA64, but they are also called x64 processors. They are not compatible with 32-bit processing and require a 64-bit operating system.

Windows 2000 is a 32-bit OS. Windows XP Professional x64 Edition is a 64-bit OS, and all other Windows XP editions are 32-bit operating systems. Vista Home Basic, Home Premium, Business, Enterprise, and Ultimate editions all come in either 32-bit or 64-bit versions. When you purchase the retail version of the Ultimate Edition, the 32-bit DVD and 64-bit DVD are included in the package. For the other Vista editions, you must request the 64-bit DVD from Microsoft after you have purchased the retail version of the OS. The OEM version of each Vista OS can be purchased in 32-bit or 64-bit code.

Most modern desktop and laptop processors today can handle either a 32-bit or 64-bit OS, which are sometimes referred to as an x86 or x64 OS. Keep these discussion points in mind when deciding which to install:

- ▲ *Point 1.* 64-bit processing is faster than 32-bit processing because the CPU is handling more bits at once. However, a 64-bit OS requires more resources than a 32-bit OS.
- ▲ *Point 2.* A 64-bit OS requires that device drivers operating in kernel mode be 64-bit drivers. These 64-bit drivers must be available from the device manufacturer.
- ▲ *Point 3.* An application is compiled to process 64 bits or 32 bits. A 64-bit OS can run either 64-bit applications or 32-bit applications, but 64-bit applications are faster. Also, 64-bit applications cannot run on a 32-bit OS.
- ▲ *Point 4.* A 32-bit OS can only address up to 4 GB of memory. More than that might be installed on the motherboard, but the OS cannot use it because it does not have enough memory addresses to assign to the physical memory. A 64-bit OS theoretically can address up to 1 terabyte (TB) of memory, although in practice, most motherboards can only hold from 12 to 16 GB of memory. (A terabyte is roughly 1000 GB or 1 trillion bytes).
- ▲ *Point 5.* If you open many applications at the same time and have high computing needs and enough hard drive space and memory, you can benefit from 64-bit computing. To get the most out of it, the processor, motherboard, operating system, drivers, and applications must all be 64 bit, and you should have installed the maximum amount of memory the motherboard supports.

Often a manufacturer will install a 32-bit OS on a computer that could support a 64-bit OS. In Vista, to find out what type of processor and OS is installed, click **Start**, right-click **Computer**, and select **Properties** from the shortcut menu. Figure 2-14 shows the results for one laptop. It shows a 32-bit operating system installed with a Core2 Duo CPU. This CPU could have handled a 64-bit OS.

Here's one more important tip you need to know about 64-bit computing. When Microsoft publishes a patch or update for Windows on its Web site, some patches are designated for specific processors, and error messages use terminology that might be confusing if you don't understand the terms. Follow these guidelines when reading error messages or documentation on the Microsoft site:

- ▲ The term x86 refers to 32-bit processors and to 32-bit operating systems. For example, you need to download a patch from Microsoft to fix a Vista problem you are having with USB devices. The article on the Microsoft Web site that applies to your problem says to download the patch if you are using a Windows Vista, x86-based version. Take that to mean you can use this patch if you are using a 32-bit version of Vista.
- ▲ The term x86-64 refers to a 64-bit OS or to 32-bit processors that process 64-bit instructions such as the Intel Core2 Duo or 64-bit AMD processors (AMD64 refers specifically to these AMD processors). For example, a Windows error message might be, "You are attempting to load an x86-64 operating system." Take that to mean you

A+
220-701
3.1

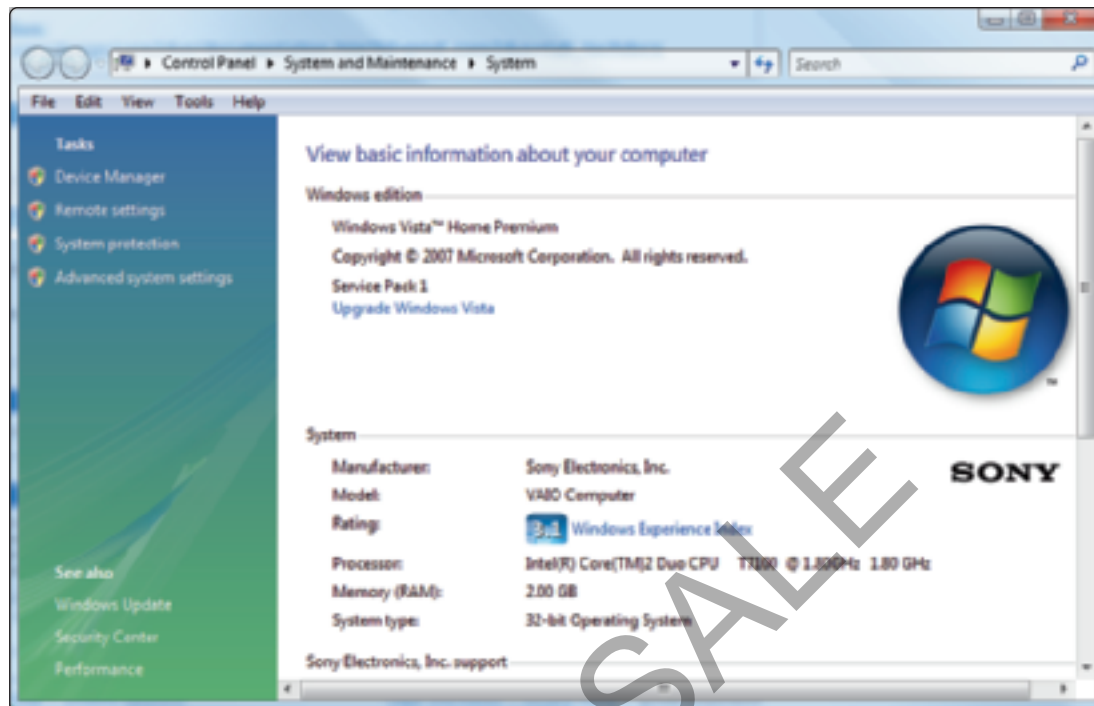


Figure 2-14 A 32-bit version of Vista is installed with a 64-bit processor
Courtesy: Course Technology/Cengage Learning

are attempting to load a 64-bit OS onto a computer that has a hybrid 32-bit/64-bit processor installed, such as the Athlon 64 or Intel Core2 Duo.

- ▲ The term IA64 refers specifically to 64-bit Intel processors such as the Xeon or Itanium. For example, you are selecting a utility to download from the Microsoft Web site. One choice for the utility specifies an IA64 platform. Only select this choice if you have installed an Itanium or Xeon processor. (By the way, a techie uses the word platform to mean the hardware and software on which other software is running. In this context, the operating system's platform is the processor.)
- ▲ The term x64 refers to 64-bit operating systems. For example, Microsoft offers two versions of Vista Home Premium: the x86 version and the x64 version.



A+ Tip

The A+ 220-701 Essentials exam expects you to know the difference between Windows XP and Windows Vista 32-bit and 64-bit versions. You are also expected to be familiar with the terms 32-bit, 64-bit, x86, and x64.

Now that you have a general idea of how Windows manages applications, hardware, users, and their data, let's look at some of the tools for using Windows.

USING WINDOWS 2000/XP/VISTA

Every PC support technician needs to be a power user of Windows. You need to know how the Windows desktop is organized and how it works. You also need to know how to use Windows utilities such as My Computer, Windows Explorer, the Control Panel, System Information, and the Command Prompt window. All these tools are covered in this part of the chapter. In other chapters, you'll learn to use more Windows tools.

A+
220-701
3.1
3.2

THE WINDOWS VISTA DESKTOP

The Windows desktop is the primary tool provided by the Windows shell. In this section, you will learn about the features of the desktop, including the Start menu, taskbar, and Vista sidebar. You will also learn how to manage shortcuts and icons on the desktop. We'll use Vista as our primary OS for learning and then discuss what is different about the Windows XP and 2000 desktops.

THE START MENU

The Vista Start menu is shown in Figure 2-15. Notice in the figure that the username for the person currently logged on is shown at the top right of the Start menu.

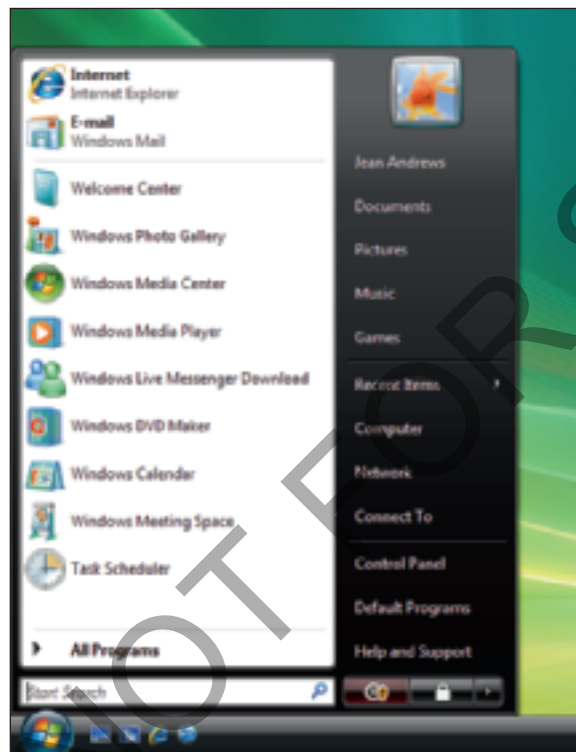


Figure 2-15 The Vista desktop and Start menu
Courtesy: Course Technology/Cengage Learning

Applications at the top left of the Start menu are said to be “pinned” to the menu—in other words, permanently listed there until you change them in a Start menu setting. Applications that are used often are listed below the pinned applications and can change from time to time. The programs in the white column on the left side of the Start menu are user-oriented applications. Entries in the black column on the right side of the menu give access to user files and OS utilities.

THE VISTA SIDEBAR AND GADGETS

The Windows Sidebar and gadgets for the Vista desktop are new with Windows Vista. If the sidebar is not installed, you can use the Control Panel to install it. Click **Start** and click **Control Panel**. In the Control Panel window, click **Appearance and Personalization** and then click

2

A+ 220-701

A+
220-701
3.1
3.2

Windows Sidebar Properties. From the properties box, you can choose to start the sidebar each time Windows starts, decide where on the desktop the sidebar appears, and remove the gadgets currently in the sidebar. To add new gadgets, click the + sign at the top left of the sidebar. A window of gadgets appears (see Figure 2-16). Drag a gadget from this window to the sidebar.



Figure 2-16 Windows Sidebar can be customized with installed and downloaded gadgets
Courtesy: Course Technology/Cengage Learning

HOW TO LAUNCH AN APPLICATION

Let's open a few applications and then see how the Windows desktop can be used to manage these open applications. Four options to open an application are:

- ▲ *Use the Start menu.* Click the **Start** button, select **All Programs**, and then select the program from the list of installed software.
- ▲ *Use the Search box.* Click the **Start** button, and then enter the name of the program file or command in the Start Search box (see Figure 2-17). In Windows 2000/XP, use the Run dialog box. Incidentally, the Vista search box can also find data files and folders and will search text within document files.
- ▲ *Use Windows Explorer or the Computer window.* Execute a program or launch an application file by double-clicking the filename in Windows Explorer or the Computer window.

A+
220-701
3.1
3.2

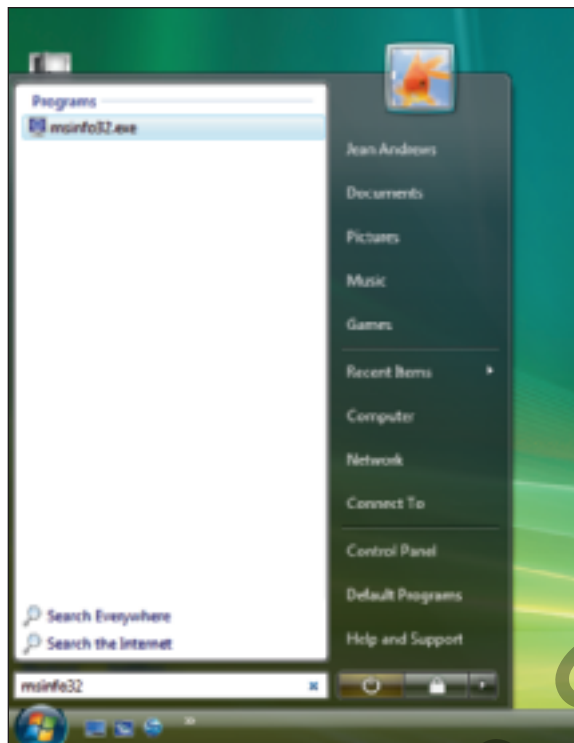


Figure 2-17 Use the Vista Search box to launch a program
Courtesy: Course Technology/Cengage Learning

2

A+ 220-701

(In Windows XP, the Computer window is called My Computer.) To use the Computer window, click **Start, Computer**. The Computer window shown in Figure 2-18 appears. Double-click the drive on which the program file is stored. In our example, we double-clicked **Local Disk (C:)**. Then drive down to the program file on the drive. Double-click the program file to launch it.



Figure 2-18 If you know the location of a program file, you can drill down to it and launch it from the Computer window
Courtesy: Course Technology/Cengage Learning

A+
220-701
3.1
3.2

- ▲ *Use a shortcut icon.* A quick way to open an application you use often is to place a shortcut icon to the program on the desktop. A shortcut icon is a clickable item on the desktop that points to a program you can execute, or to a file or folder. One way to create a shortcut for a program is to right-click the program file in the Computer or Windows Explorer window and select Create Shortcut from the menu that appears.

APPLYING CONCEPTS

Follow these steps to launch three instances of Microsoft Paint:

1. From the Start menu, launch the Paint program, which is in the Accessories folder.
2. The program file is mspaint.exe. Use the Search box to launch the program.
3. The program file is normally located at C:\Windows\System32. Use the Computer window to drill down to and launch the program.

To create and use a shortcut to the Microsoft Paint program, follow these steps:

1. In the Computer window, drill down to the mspaint.exe file in the C:\Windows\System32 folder.
2. Right-click it and select **Create Shortcut** (see Figure 2-19).

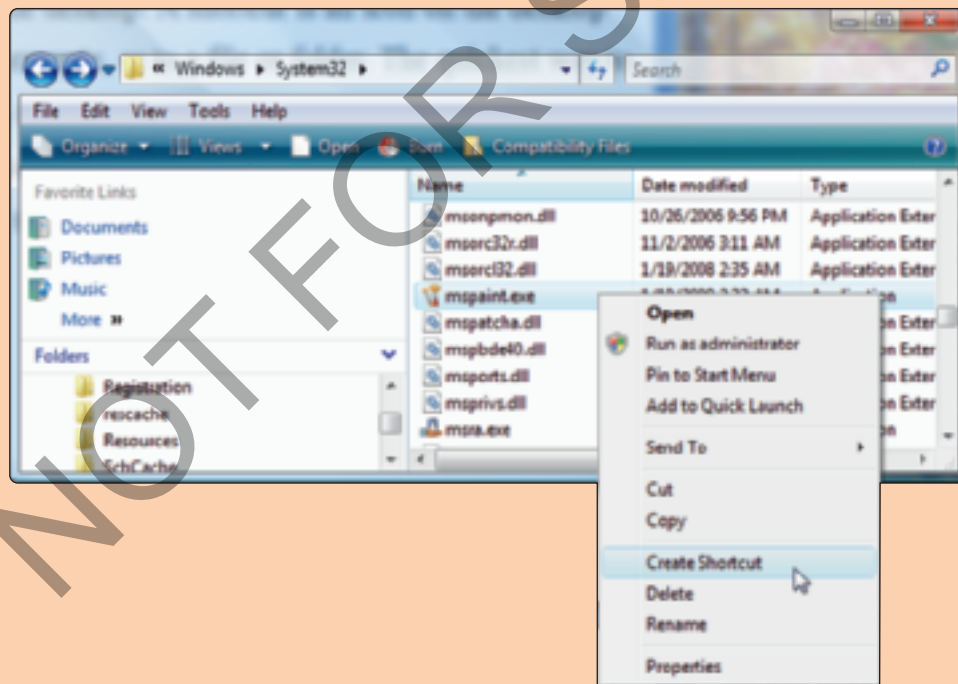


Figure 2-19 Create a shortcut
Courtesy: Course Technology/Cengage Learning

3. If a dialog box appears saying, "Windows cannot create a shortcut here. Do you want the shortcut to be placed on the desktop instead?" click **Yes**. (If Windows creates a shortcut in the folder where the file is located, drag the shortcut to the desktop.)
4. On the desktop, to see the properties of the shortcut, right-click it and select **Properties**. Figure 2-20 shows the properties of the Microsoft Paint shortcut icon, which points to the program in the E:\Windows\System32 folder.
5. Use the shortcut to launch Microsoft Paint.

A+
220-701
3.1
3.2

2

A+ 220-701

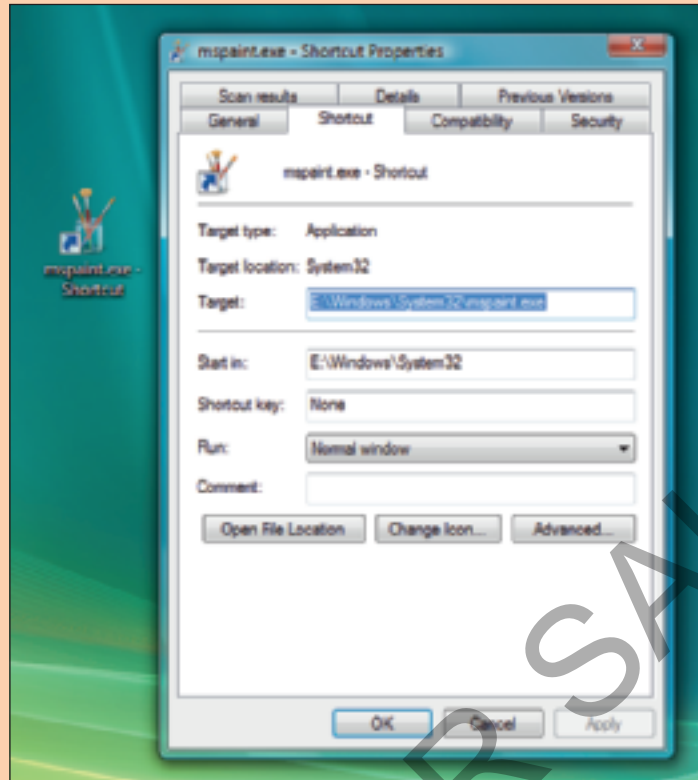


Figure 2-20 The shortcut properties show the name and location of the program file "to which it points".
Courtesy: Course Technology/Cengage Learning

If you're following along at your computer while reading this chapter, you might want to leave the instances of Microsoft Paint open so you can practice managing open applications in the sections that follow.

THE TASKBAR AND NOTIFICATION AREA (SYSTEM TRAY)

The **taskbar** is normally located at the bottom of the Windows desktop, displaying information about open programs and providing quick access to others (see Figure 2-21). Items displayed in the taskbar can be programs running or not running. An open application displays its title in the taskbar (see Figure 2-21). If you are using the Aero interface, when you hover over the title, a thumbnail of the open application appears. Quick Launch icons on the left are displayed in the taskbar so you can quickly find and launch them. Click the double right arrow to the right of the Quick Launch area to reveal more icons.

Notes To get a flip view of applications, press **Alt+Tab**, and to minimize all applications, click **Show the Desktop** in the Quick Launch area. If you are using the Aero interface, in the Quick Launch area, click the **Switch between windows** icon to see the flip 3D view of open applications (see Figure 2-22). Alternately, you can press **Win+Tab** (the Windows key and the Tab key). Then use the Tab key to move from one open application to another.

The **notification area**, also called the **system tray** or **systray**, is usually on the right side of the taskbar and displays open services. A **service** is a program that runs in the background to

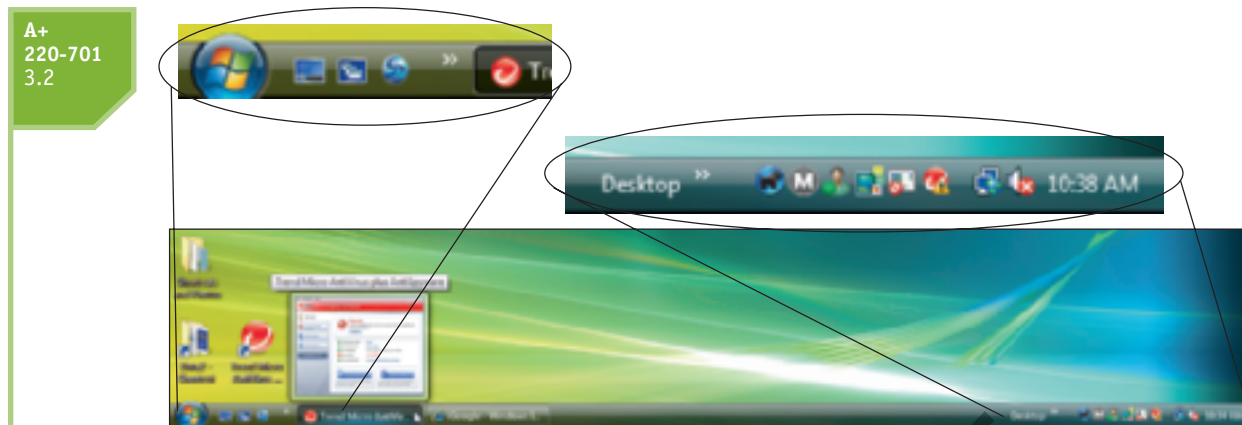


Figure 2-21 The Windows Vista taskbar with a thumbnail of one open application
Courtesy: Course Technology/Cengage Learning

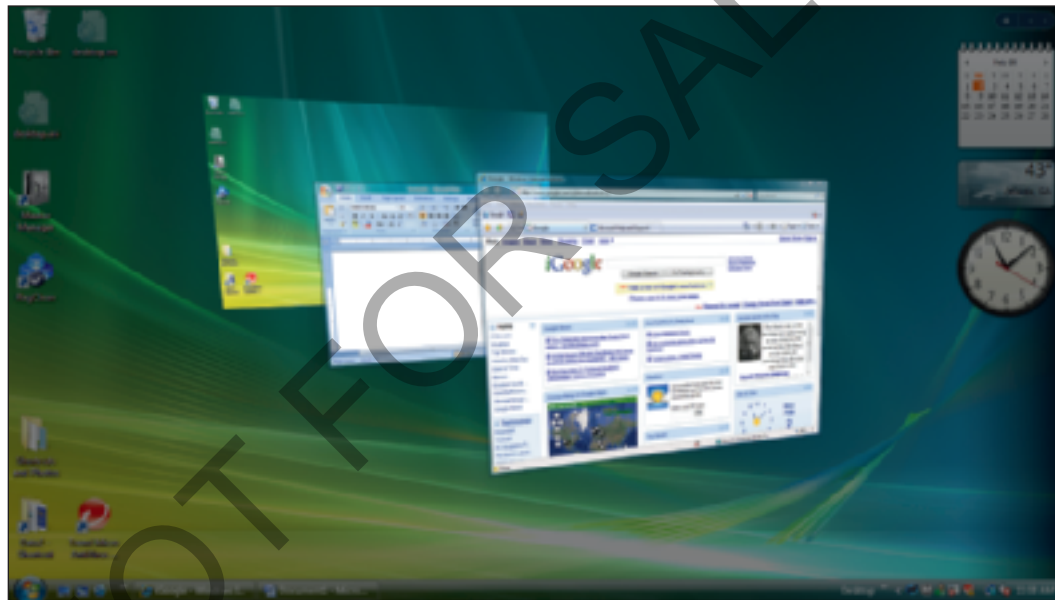


Figure 2-22 Press Win+Tab to view open applications in a flip 3D view when using the Vista Aero interface
Courtesy: Course Technology/Cengage Learning

support or serve Windows or an application. The services in the notification area include the volume control and network connectivity. Windows automatically hides these icons. To display them, click the left arrow on the right side of the taskbar. If you have a sluggish Windows system, one thing you can do is look at all the running services in the notification tray and try to disable the services that are taking up system resources. How to do that is covered in later chapters.

Notes Microsoft insists that using the term system tray or systray for the notification area is wrong, although in some Microsoft documentation, you'll find these terms used.

To control the Start menu, taskbar, notification area, and open applications, right-click the taskbar and use the shortcut menu. Using it, you can turn the Quick Launch display on or off, add items to the taskbar, control the way open windows appear on the desktop, and, if you unlock the taskbar, you can move it to other places on the screen. When you choose

A+
220-701
3.2

Properties from this shortcut menu, the Taskbar and Start Menu Properties dialog box appears (see Figure 2-23). Using it, you can further control the Start menu and the taskbar.



Figure 2-23 Use the Taskbar and Start Menu Properties window to control what appears in the Start menu and taskbar
Courtesy: Course Technology/Cengage Learning



A+ Exam Tip

The A+ 220-701 Essentials exam expects you to know how to configure and use the Start Menu, taskbar, and notification area, also called the systray.

PERSONALIZE THE WINDOWS DESKTOP

You can also personalize the desktop. To use the Personalization window, right-click anywhere on the desktop, and choose **Personalize** from the shortcut menu (see Figure 2-24). Using this window, you can personalize the way Windows appears, including the desktop, sounds, mouse action, color themes, and display settings. As a support technician, you are often called on to solve problems with display settings. When and how to change these settings are covered in Chapter 9.

A+
220-701
3.3

DEFAULT PROGRAMS AND FILE ASSOCIATIONS

The Default Programs entry in the right column of the Start menu accesses the Default Program window to change default programs associated with certain file extensions and activities. For example, look at the top left of the Start menu column in Figure 2-15, and you can see that the current default browser is Internet Explorer and the default e-mail software is Windows Mail. You can use the Default Programs window to change these applications to another browser or e-mail software. You can also use this window to change the way audio CDs, DVD movies, games, pictures, video files, and audio files are handled and to change the default program associated with a certain file extension. A **file extension** is one or more characters following the last period in a filename, such as .exe, .txt, or .avi. The file extension indicates how the file is organized or formatted, the type content in the file, and what program uses the file. For example, the .avi file extension is a video file that is normally played by Windows Media Player.

2

A+ 220-701

A+
220-701
3.3

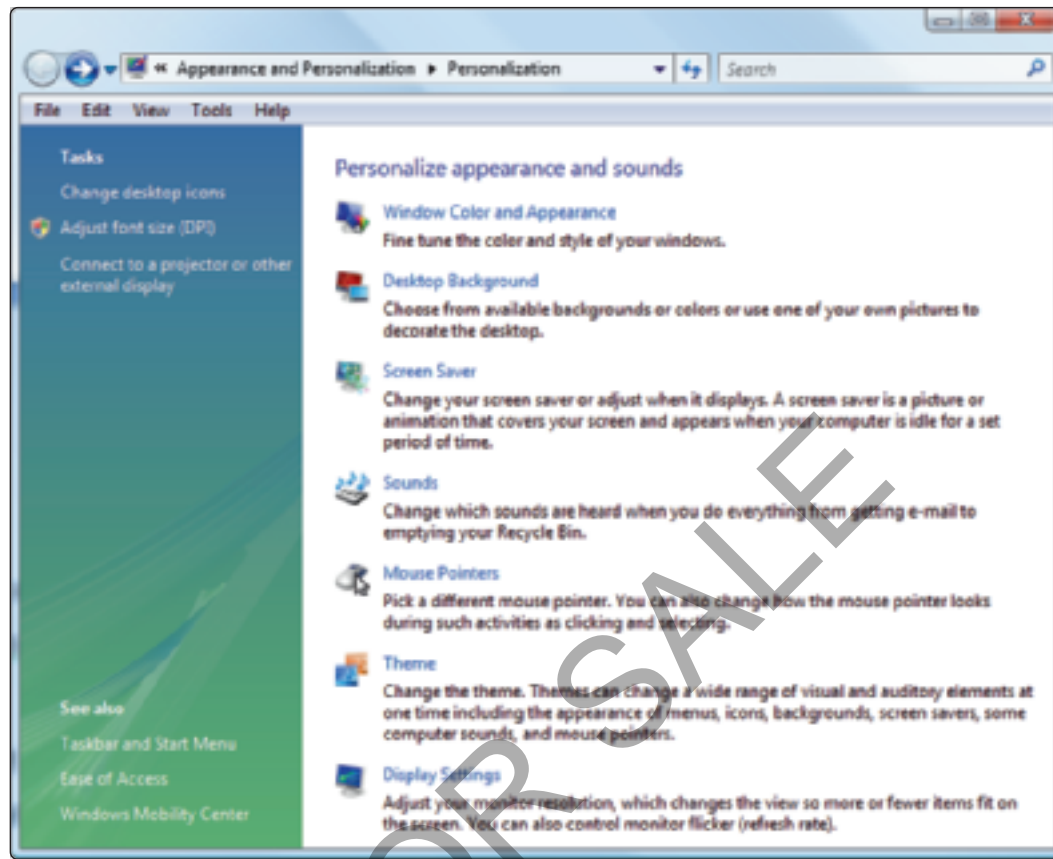


Figure 2-24 Use the Personalization window to change the appearance of Windows
Courtesy: Course Technology/Cengage Learning

Follow these steps to use the Default Programs window to change the program associated with a file extension:

1. Click **Start** and then click **Default Programs**. The Default Programs window opens (see Figure 2-25).

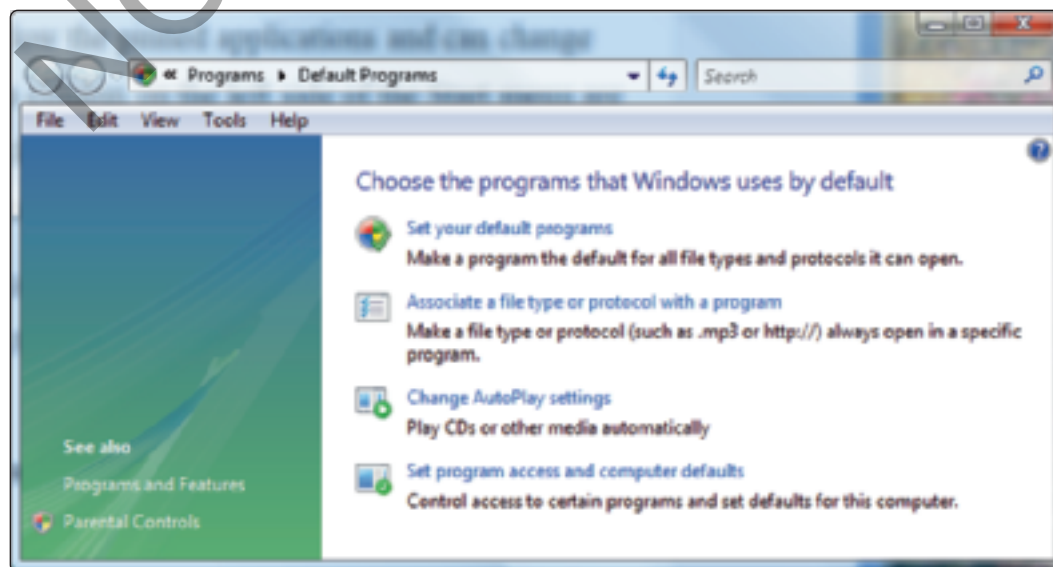


Figure 2-25 The Default Programs window is used to change file associations
Courtesy: Course Technology/Cengage Learning

A+
220-701
3.3

2. Click **Associate a file type or protocol with a program**. The list of current associations appears.
3. Select the file extension you want to change and click **Change program**. The Open With dialog box appears (see Figure 2-26).
4. The box displays installed programs that can handle .avi files. Make your selection and click **OK** and then click **Close**. Close the Default Programs window.

2

A+ 220-701

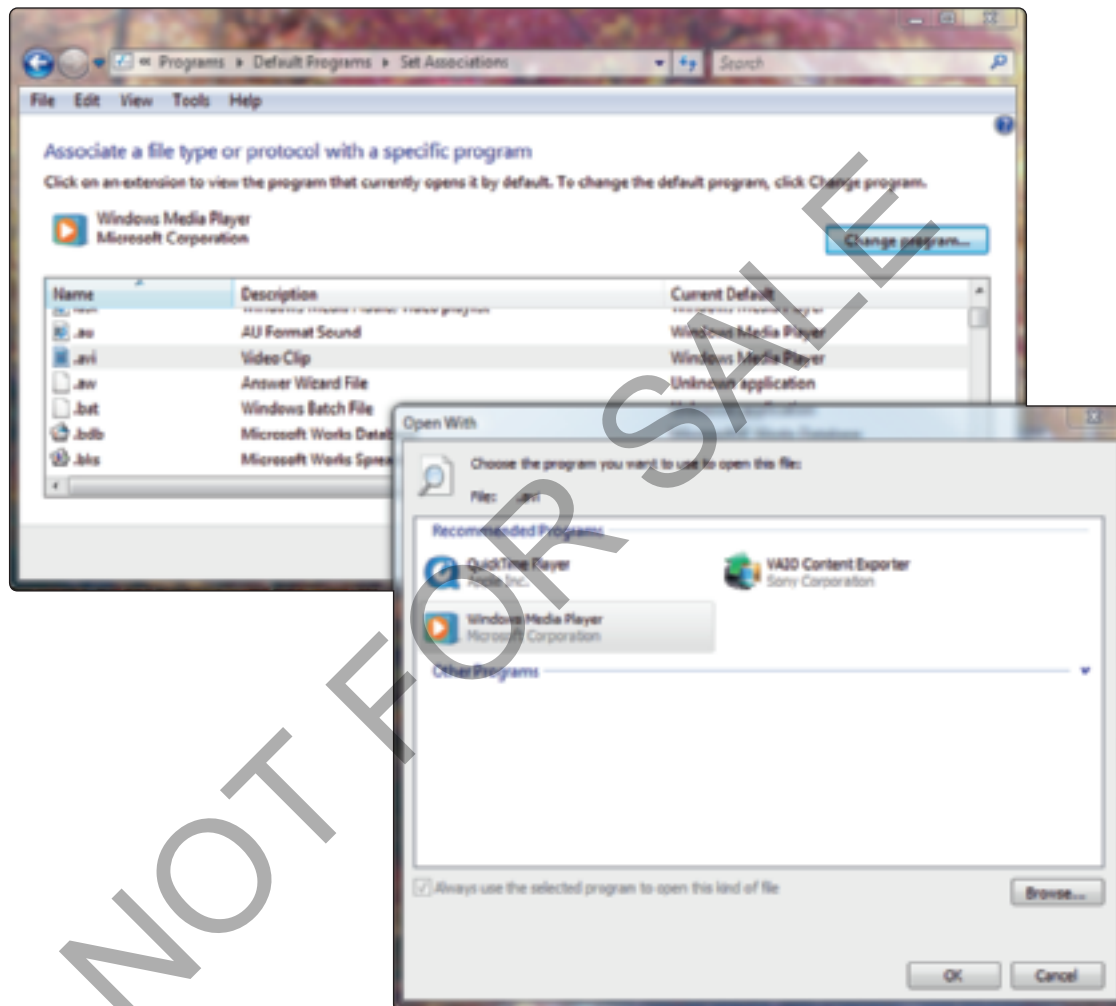


Figure 2-26 Select the default program to play an .avi video file
 Courtesy: Course Technology/Cengage Learning

A+
220-701
3.1
3.2

DIFFERENCES IN THE WINDOWS XP/2000 DESKTOP AND THE VISTA DESKTOP

Comparing the Windows XP desktop shown in Figure 2-27 to the Vista desktop, you can see many similarities. When you point to **All Programs** in Figure 2-27, the list of currently installed software appears. Figure 2-28 shows the default entries that appear when you point to **Accessories** and then **System Tools**. You can use these tools to back up data, clean up a hard drive, schedule tasks, restore Windows settings, and do various other things when solving problems with Windows. In Vista, the System Tools group includes all the XP tools plus a new one: Internet Explorer (No Add-ons). This tool makes it possible to open Internet Explorer in its bare-bones state with no add-ons running; this state is useful when troubleshooting. Windows 2000 menus are organized similar to those of Windows XP.

A+
220-701
3.1
3.2

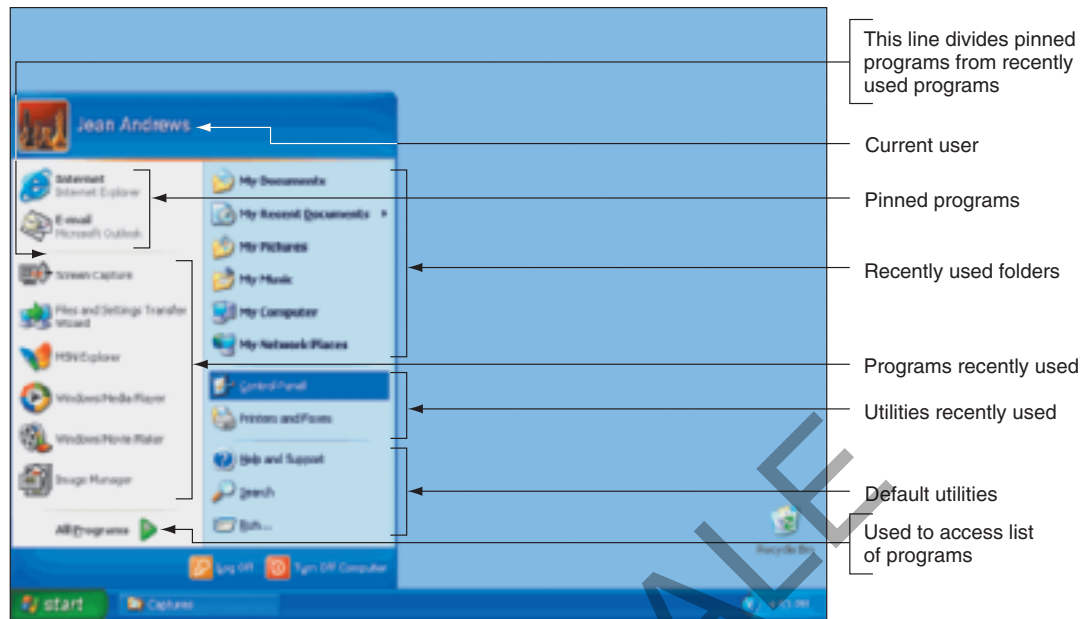


Figure 2-27 The Windows XP desktop and Start menu
Courtesy: Course Technology/Cengage Learning

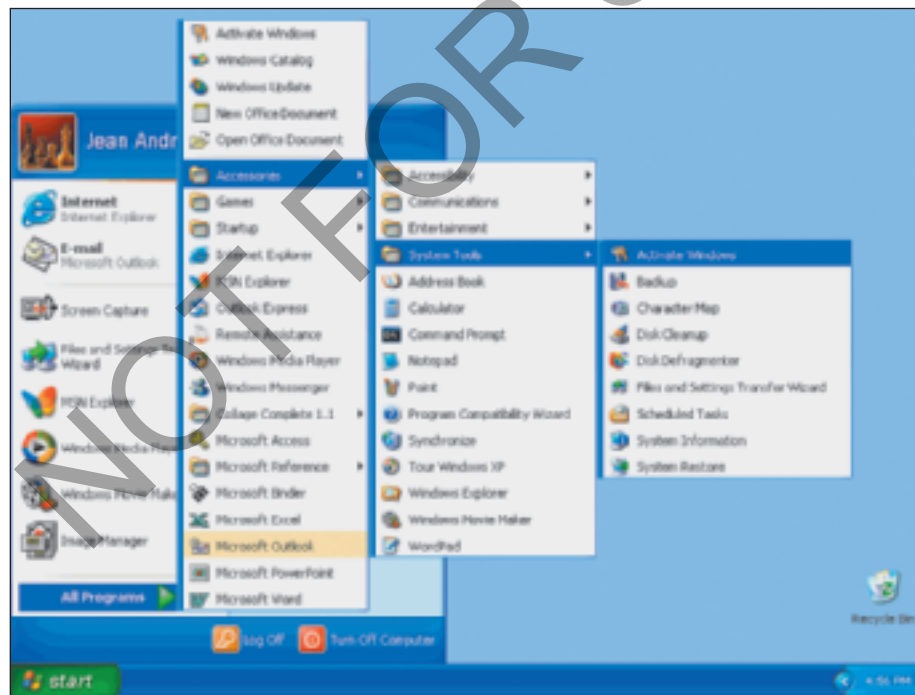
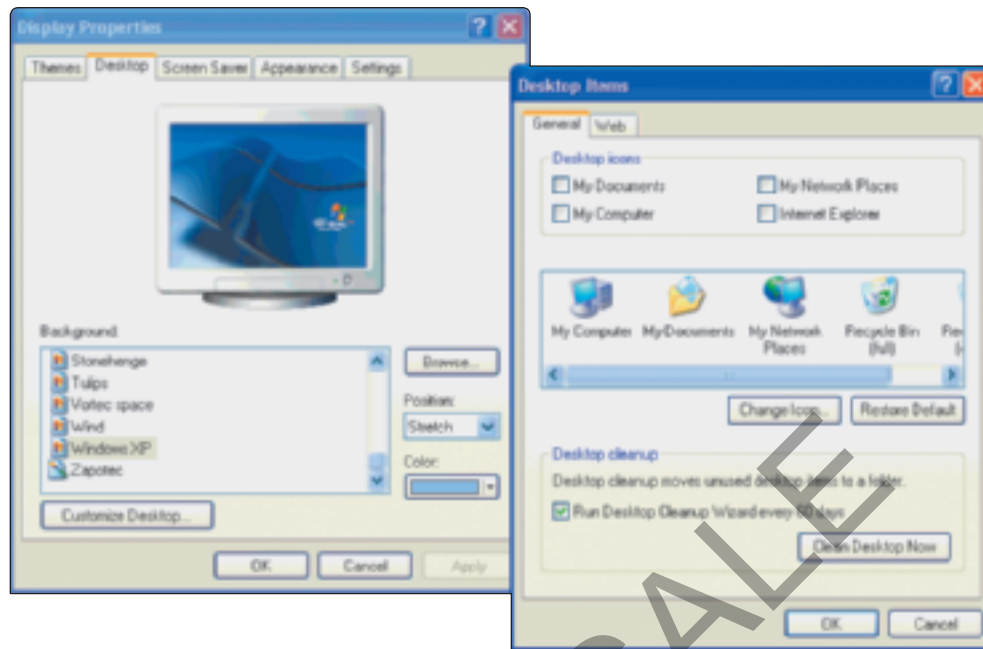


Figure 2-28 Click Start, All Programs to view the list of currently installed software
Courtesy: Course Technology/Cengage Learning

You can control the Start menu and taskbar in Windows XP/2000 in a similar way as in Vista. However, Windows XP/2000 uses the Display Properties window rather than the Personalization window of Vista to control the appearance of Windows. You access the window the same way as the Personalization window of Vista: Right-click the desktop and select Properties from the shortcut menu (see Figure 2-29). The left side of Figure 2-29 shows the Desktop tab of the Display Properties window for Windows XP.

A+
220-701
3.1
3.2



2

A+
220-701

Figure 2-29 Windows XP Display Properties window lets you change settings for your desktop
Courtesy: Course Technology/Cengage Learning

The right side of Figure 2-29 shows the dialog box that appears when you click **Customize Desktop**. You can accomplish about the same things using the Vista Personalization window and the XP Display Properties window, but they are organized differently. For Windows 2000, the Taskbar and Start Menu Properties window and the Display Properties window are organized slightly differently than for Windows XP, but both work about the same as in XP.

When you first install Windows XP, only the Recycle Bin shows on the desktop by default. You can add other shortcuts by using the Display Properties window. In the window, click the **Desktop** tab and then click **Customize Desktop** to display the Desktop Items window, which is shown in Figure 2-29. You can check **My Documents**, **My Computer**, **My Network Places**, and **Internet Explorer** to add these icons to the desktop. Also notice on this window the option to have Windows clean up your desktop by moving any shortcuts that you have not used in the last 60 days to a separate folder.

A+
220-701
3.1

VISTA USER ACCOUNT CONTROL BOX

A new security feature introduced with Windows Vista is the **User Account Control (UAC) dialog box**, shown in Figure 2-30. This box appears each time a user attempts to perform an action that can be done only with administrative privileges. In Vista, there are two types of user accounts: An **administrator account** and a **standard account**. An administrator account has more privileges than a standard account and is used by those responsible for maintaining and securing the system. When the UAC box appears, if a user is logged on as an administrator, all she has to do is click **Continue** to close the box and move on, as shown in Figure 2-30(a). If the user account does not have administrative privileges, the user has the opportunity to enter a password of an administrative account to continue, as shown in Figure 2-30(b).

The purposes of the UAC box are: (1) to prevent malicious background tasks from doing harm when the administrator is logged on, and (2) to make it easier for an administrator to log in using a less powerful user account for normal desktop activities, but still be able to perform administrative tasks while logged in as a regular user. It is possible to disable the

A+
220-701
3.1

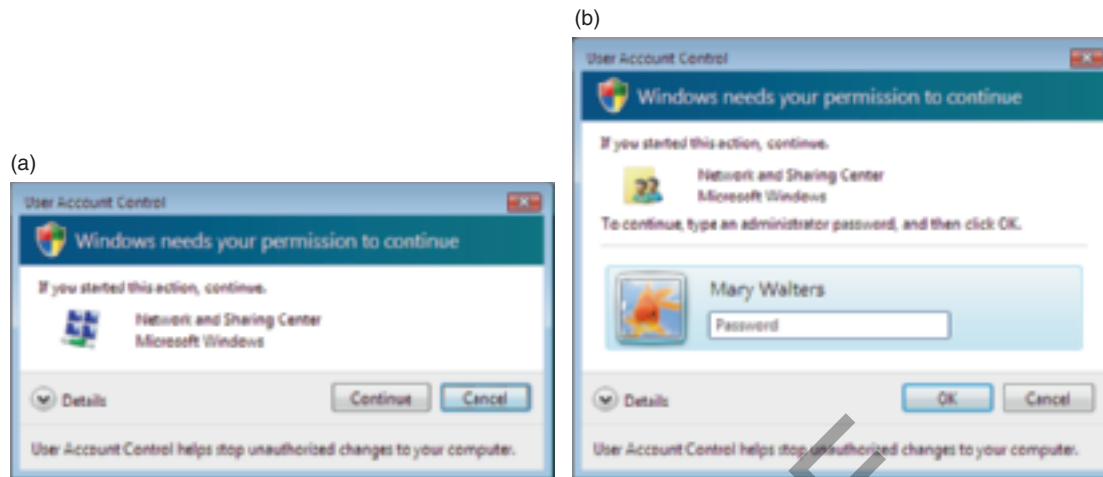


Figure 2-30 The User Account Control box appears each time a user attempts to perform an action requiring administrative privileges: (a) the current account has administrative privileges; (b) the current account does not have administrative privileges
Courtesy: Course Technology/Cengage Learning

UAC box, but for security purposes, that is not recommended. For example, suppose someone is logged on as an administrator with the UAC box turned off and clicks a malicious link on a Web site. Malware can download and install itself without the user's knowledge and might get admin privileges on the computer. If he's logged on as a standard user and the UAC box is turned off, the malware might still install without the user's knowledge but with lesser privileges. The UAC box stands as a gatekeeper to malware installing behind your back because someone has to click the UAC box before the installation can proceed.

It's interesting to know the color codes that the UAC box uses to help you decide if software being installed is safe:

- ▲ If the top of the UAC box is red, Vista does not trust this program one bit and is not happy with you installing it. In fact, it refuses to allow the installation to continue.
- ▲ If the top of the UAC box is yellow (see Figure 2-31), Vista doesn't know or trust the publisher. It will allow you to continue, but with a serious warning.

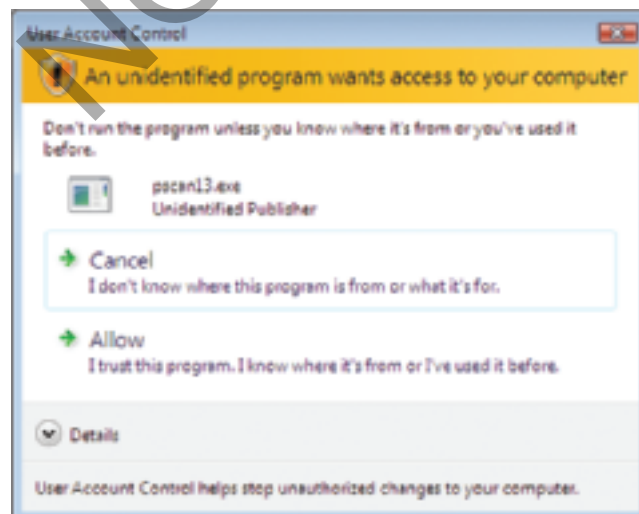


Figure 2-31 This UAC box using a yellow bar indicates the program has not been approved by Microsoft
Courtesy: Course Technology/Cengage Learning

A+
220-701
3.1

- ▲ If the top of the UAC box is green, Vista is happy to accept one of its own Windows components to be installed.
- ▲ If the top of the UAC box is gray, the program has signed in with Microsoft and Vista is happy to install it.

2

A+ 220-701

A+
220-701
3.2
3.3

WINDOWS EXPLORER AND THE COMPUTER WINDOW

The two most useful tools to explore files and folders on your computer are Windows Explorer and the Vista Computer window. (Windows 2000/XP calls the Computer window the My Computer window.) With Windows Vista and Windows XP, these windows are really the same tools with different names. Under Windows 2000, there are slight differences between the My Computer window and Windows Explorer. Because all the windows work about the same way, in this part of the chapter we'll cover them for all three operating systems together.

To access the Computer or My Computer window, use one of these methods:

- ▲ For Windows Vista, click **Start** and click **Computer**.
- ▲ For Windows XP, click **Start** and click **My Computer**.
- ▲ For Windows 2000, double-click **My Computer** on the desktop.

Earlier in the chapter, you saw the Vista Computer window in Figure 2-18. Figure 2-32 shows the Windows XP My Computer window, which looks the same as the Windows 2000 My Computer window.

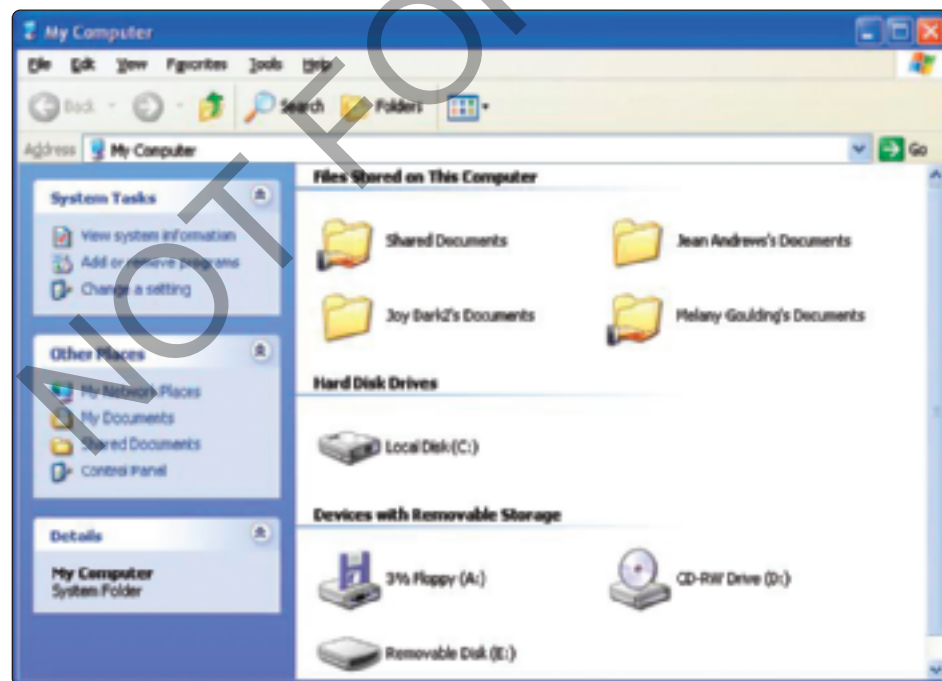


Figure 2-32 Use Windows XP My Computer to manage system resources
Courtesy: Course Technology/Cengage Learning

Regardless of the OS, Windows Explorer is easily opened in these two ways:

- ▲ Right-click **Computer** or **My Computer** and select **Explore** from the menu.
- ▲ Right-click **Start** and select **Explore** from the menu.

A+
220-701
3.2
3.3

Let's now turn our attention to how to use the Computer, My Computer, and Explorer windows in all three OSs to manage files and folders and other system resources.

FILES AND DIRECTORIES

Every OS manages a hard drive, optical drive, floppy disk, or USB drive by using directories (also called folders), subdirectories, and files. The drive is organized with a single **root directory** at the top of the top-down hierarchical structure of subdirectories, as shown in Figure 2-33. The exception to this rule is a hard drive because it can be divided into partitions that can have more than one **volume** such as drive C and drive D on the same physical hard drive. For a volume, such as drive C, the root directory is written as C:\. Each volume has its own root directory and hierarchical structure of subdirectories.

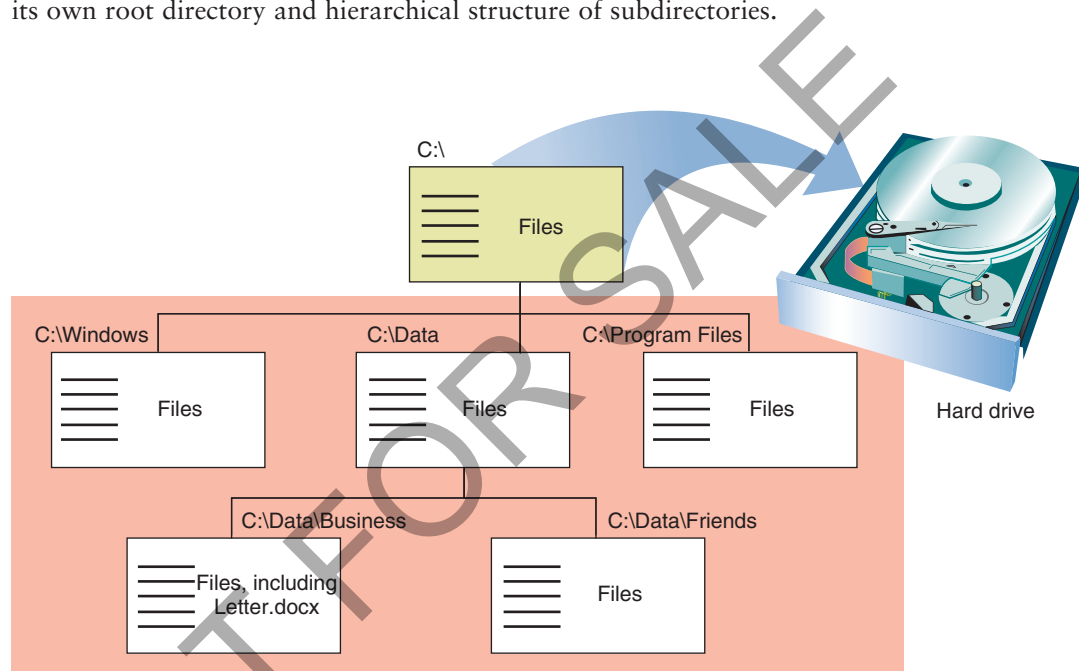


Figure 2-33 Storage devices such as a USB drive, CD, or hard drive, are organized into directories and subdirectories that contain files
Courtesy: Course Technology/Cengage Learning

As shown in Figure 2-33, the root directory can hold files or other directories, which can have names such as C:\Data. These directories, called **subdirectories**, **child directories**, or **folders**, can, in turn, have other directories listed in them. Any directory can have files and other subdirectories listed in it; for example, Figure 2-33 shows C:\Data\Business\Letter.docx. In this path to the file, the C: identifies the volume. If a directory is on a floppy disk, then either A: or B: identifies it. If a directory is on a volume on a hard drive or on a CD, USB drive, or DVD, a letter such as C:, D:, or F: identifies it.

When you refer to a drive and directories that are pointing to the location of a file, as in C:\Data\Business\Letter.docx, the drive and directories are called the **path** to the file (see Figure 2-34). As you learned earlier in the chapter, when naming a file, the first part of the name before the period is called the **filename** (Letter), and the part after the period is called the file extension (docx), which has one or more characters to identify the type file. The .docx file extension identifies the file type as a Microsoft Word 2007 document file.

A+
220-701
3.3

2

A+ 220-701

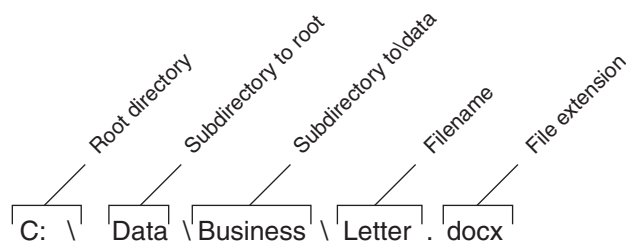


Figure 2-34 The complete path to a file includes the volume letter, directories, filename, and file extension; the colon, backslashes, and period are required to separate items in the path
Courtesy: Course Technology/Cengage Learning

NAVIGATE THE DIRECTORY STRUCTURE

When working with the Windows Explorer or Computer window these tips can make your work easier:

- ▲ *Tip 1.* Drill down to subfolders inside folders by double-clicking the folder to cause files and subdirectories (also called subfolders) to appear in the right pane. When you click the white arrow to the left of a folder in Vista or click the plus sign to the left of a folder in 2000/XP, its subfolders appear underneath it in the left pane.
- ▲ *Tip 2.* To control what information appears about files and subfolders in the right pane, right-click the heading bar in the pane (see Figure 2-35). Check items you want to appear as columns in the right pane.
- ▲ *Tip 3.* Often-used folders are listed at the top of the left pane in the Favorite Links area. Click an entry there to display its contents.
- ▲ *Tip 4.* For Vista, to find a folder or file, use the Search box in the upper-right corner of the window.
- ▲ *Tip 5.* For Vista, use the forward and back arrows in the upper-left corner to move forward and backward to previous views.

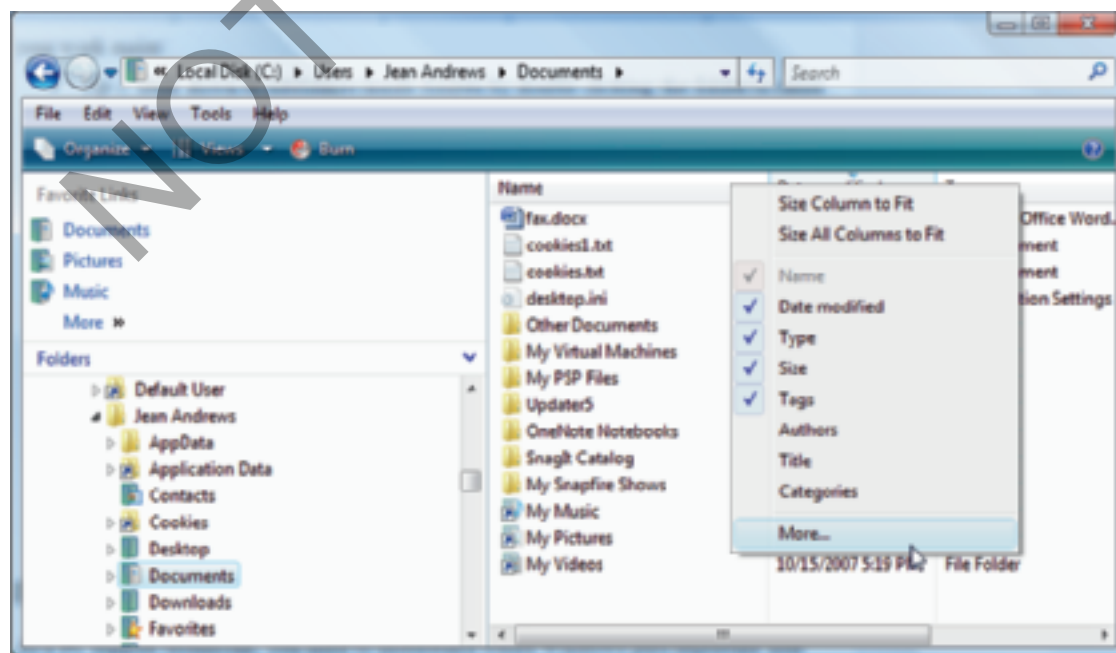



Figure 2-35 Right-click the column heading to select columns to display
Courtesy: Course Technology/Cengage Learning

A+
220-701
3.3

As a PC support technician, you need to understand where Windows puts important user files and folders. Here's the default layout, although later in the book you will learn how to change these locations:

- ▲ In Windows Vista, user data and settings are stored in a user folder and its subfolders. The folder name is the user account name and the folder is created under the *%SystemDrive%\Users* folder, for example, *C:\Users\Jean Andrews*.
- ▲ In Windows 2000/XP, the user folder is also named after the user account name. The folder is created under the *%SystemDrive%\Documents and Settings* folder, for example, *C:\Documents and Settings\Jean Andrews*. The subfolders under the user folder are organized differently under Windows 2000/XP than under Windows Vista.

 **Notes** In Microsoft documentation, the *%SystemDrive%* folder means the volume on which Windows is installed. Most often, this drive is C:, although in a dual boot environment, one OS might be installed on C: and another on a different drive. For example, Windows XP can be installed on C: and Windows Vista installed on E:. You will learn how to set up these dual boot installations in Chapter 12.

CHANGING FOLDER OPTIONS

You can also view and change options assigned to folders; these options control how users view the files in the folder and what they can do with these files.

Windows identifies file types primarily by the file extension. In Windows Explorer and the Computer window, Windows has an annoying habit of hiding the extensions of certain files. By default, Windows hides the file extension of a file if it knows which application to use to open or execute the file. For example, just after installation, it hides .exe, .com, .sys, and .txt file extensions, but does not hide .doc, .ppt, or .xls file extensions until the software to open these files has been installed. Also, Windows really doesn't want you to see its own system files, and it hides these files from view until you force it to show them.

To view hidden files and file extensions, do the following:

1. Select the folder where system files are located.
2. Click **Tools** and then click **Folder Options**. The Folder Options window opens.
3. Click the **View** tab (see Figure 2-36). Select **Show hidden files and folders**. Uncheck **Hide extensions for known file types**. Uncheck **Hide protected operating system files**. Windows complains it doesn't want to show you these files. Click **Yes** to confirm that you really want to see them.
4. Click **Apply**. Click **OK** to close the Folder Options window.

CREATE A FILE

You can create a file using a particular application, or you can create a file using Windows Explorer or the Computer window. In Explorer and the Computer window, to create a file, right-click in the unused white area in the right pane of the window and select **New** from the shortcut menu. (Alternately, in the menu bar, you can click **File** and then click **New**.) The menu lists applications you can use to create the file in the current folder (see Figure 2-37). Click the application and the file is created. You can then rename the filename. However, to keep the proper file association, don't change the file extension.

A+
220-701
3.3

2

A+ 220-701

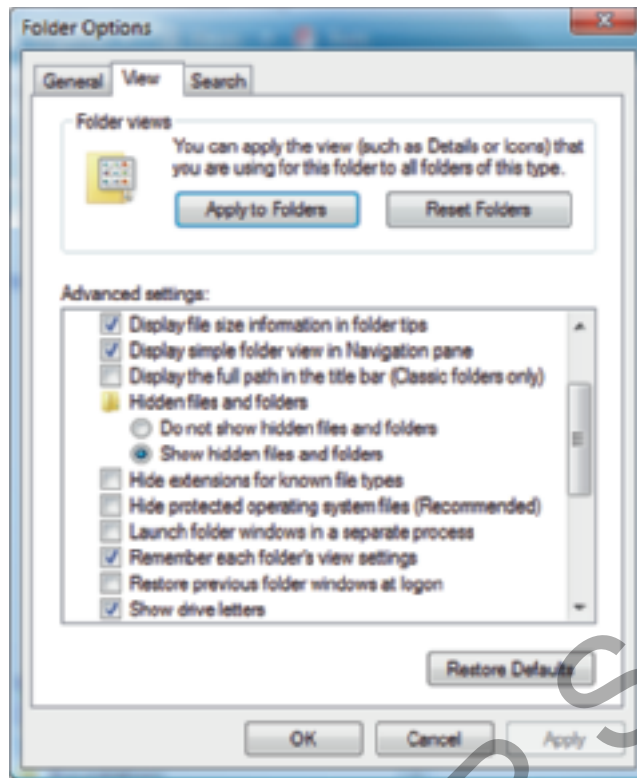


Figure 2-36 Use the Folder Options window to display hidden system files
Courtesy: Course Technology/Cengage Learning

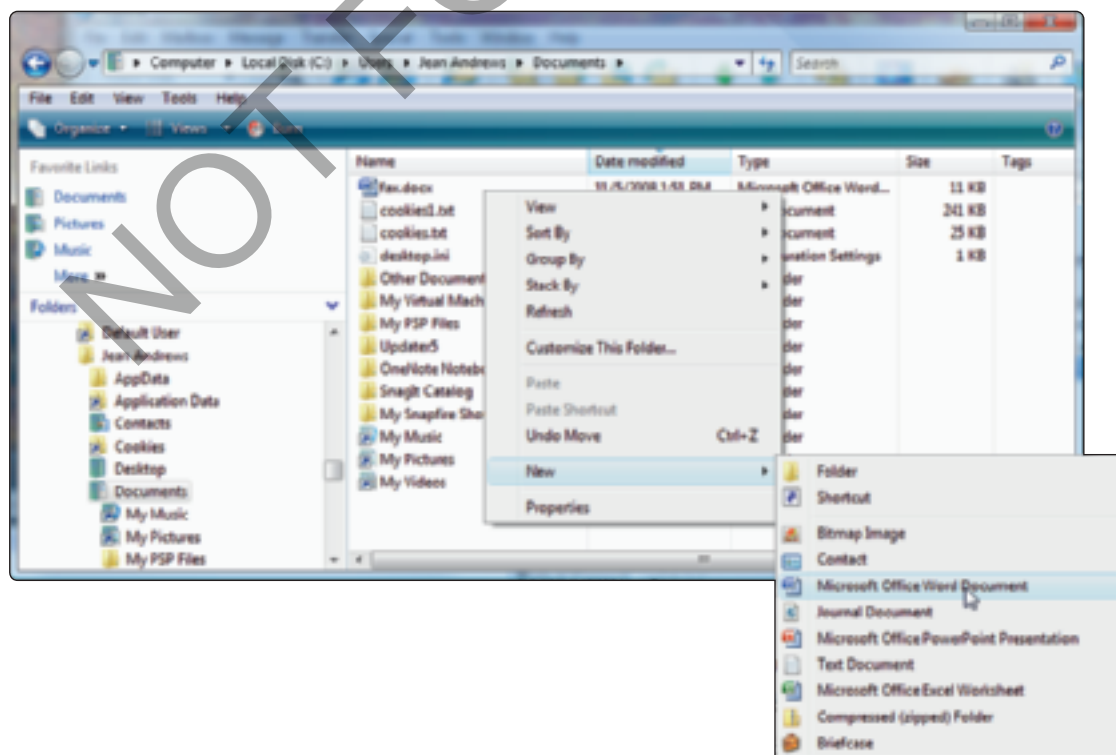


Figure 2-37 Create a new file using Windows Explorer
Courtesy: Course Technology/Cengage Learning

A+
220-701
3.3

CREATE A FOLDER

To create a folder, first select the folder you want to be the parent folder. (Remember that a parent folder is the folder that contains the child folder.) Right-click in the white area of the right pane and select **New** from the shortcut menu (or click **File, New** in the menu bar). The menu in Figure 2-37 appears. Notice in the menu that for Vista, you have three choices for folder types. These choices are explained here:

- ▲ Folder creates a regular folder.
- ▲ **Compressed (zipped) Folder** creates a compressed folder with a .zip extension. Any file or folder that you put in this folder will be compressed to a smaller size than normal. A compressed folder is often used to compress files to a smaller size so they can more easily be sent by e-mail. When you remove a file or folder from a compressed folder, the file or folder is uncompressed back to its original size.
- ▲ **Briefcase** creates a Briefcase folder, which is a folder that can be used to sync up files in this folder with its corresponding Briefcase folder on another computer. (Windows offers two ways to sync files: Briefcase and Offline Files, both of which are covered in Chapter 17.)

Make your selection and the folder is created and highlighted so that you can rename it (see Figure 2-38).

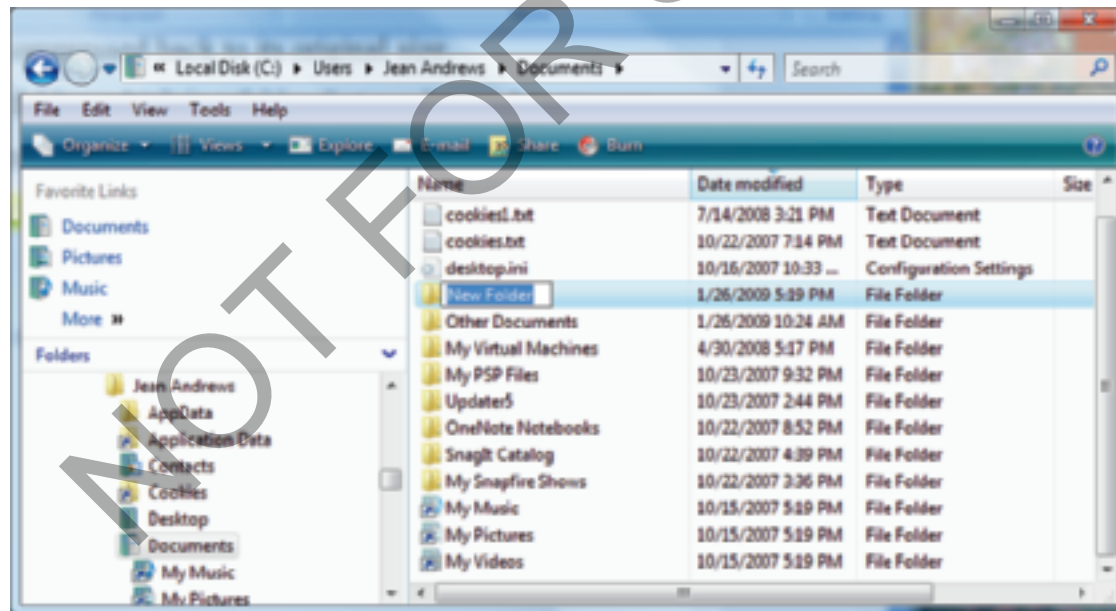


Figure 2-38 Edit the new folder's name
Courtesy: Course Technology/Cengage Learning

You can create folders within folders within folders, but there is a limitation as to the maximum depth of folders under folders; how deep you can nest folders depends on the length of the folder names themselves. In Chapter 13, you will learn that you can also create and rename a folder using commands from a command prompt.

A+ Exam Tip The A+ 220-701 Essentials exam expects you to know how to create folders, navigate the directory structure, create files, and change file attributes.

A+
220-701
3.3

It's also interesting to know that the Windows desktop is itself a folder. The Desktop of the currently logged in user is always listed as the first entry at the top of the Folders list in the Explorer or Computer window. However, the Desktop folder is located at %SystemDrive%\Users\username\Desktop for Windows Vista. For example, if the user, Anne, wants to create a folder named Presentations on the Vista desktop, she can right-click anywhere on the desktop and select New, Folder from the shortcut menu. The folder is created and she can then rename it Presentations. The folder appears on the desktop each time she logs onto the system. The actual location of this folder is at C:\Users\Anne\Desktop\Presentations.

COPY OR DELETE FILES OR FOLDERS

To copy a file or folder, right-click it and select Copy from the shortcut menu. Then click in the white area of the folder where the copied item is to go and select Paste from the shortcut menu. You can also drag and drop the item to its new location. If the location is on the same drive as the original location, the file or folder will be automatically deleted from its original location. If you don't want it deleted, hold down the Ctrl key while you drag and drop.

To delete a file or folder using Explorer, right-click the file or folder and select **Delete** from the shortcut menu. A confirmation dialog box asks if you are sure you want to delete the item. If you click **Yes**, you send the file or folder and all its contents, including subfolders, to the Recycle Bin. You can also hold down the Shift or Ctrl key as you click to select multiple items to delete, copy, or move at the same time.



Notes Appendix B lists handy keystrokes to save you time when working with Windows.

Emptying the Recycle Bin will free up your disk space. Files and folders sent to the Recycle Bin are not *really* deleted until you empty the bin. To do that, right-click the **bin** and select **Empty Recycle Bin** from the shortcut menu. In Chapter 13, you will learn that you can also copy and delete files and folders using commands from a command prompt.

CHANGE FILE ATTRIBUTES

Using Explorer or the Computer window, you can view and change the properties assigned to a file; these properties are called the **file attributes**. Using these attributes, you can do such things as hide a file, make it a read-only file, or flag a file to be backed up. From Explorer or the Computer window, right-click a file and select **Properties** from the shortcut menu. The Properties window shown on the left side of Figure 2-39 opens.

From the Properties window, you can change the read-only, hidden, archive, and indexing attributes of the file. (Indexing is used only in Windows Vista.) To make the file a read-only file or to hide the file so that it does not appear in the directory list, check the appropriate box and click **Apply**. The archive attribute is used to determine if a file has changed since the last backup. To change its value, click **Advanced** in the Properties window (see the right side of Figure 2-39). Make your change and click **OK**.

Also notice in the Advanced Attributes box in Figure 2-39 the option to Index this file for faster searching. An index is a list of items that is used to speed up a search, and Vista is the first Windows OS to use indexing for its searches. By default, it includes in the index only common user data files and folders that are normally searched for. Program files and Windows files are not included by default. Using the Advanced Attributes box, you can include or exclude the file or folder from the index. Incidentally, to change the type of files that Vista indexes, in the left pane of Control Panel, click **Change how Windows searches**.

2

A+ 220-701

A+
220-701
3.3

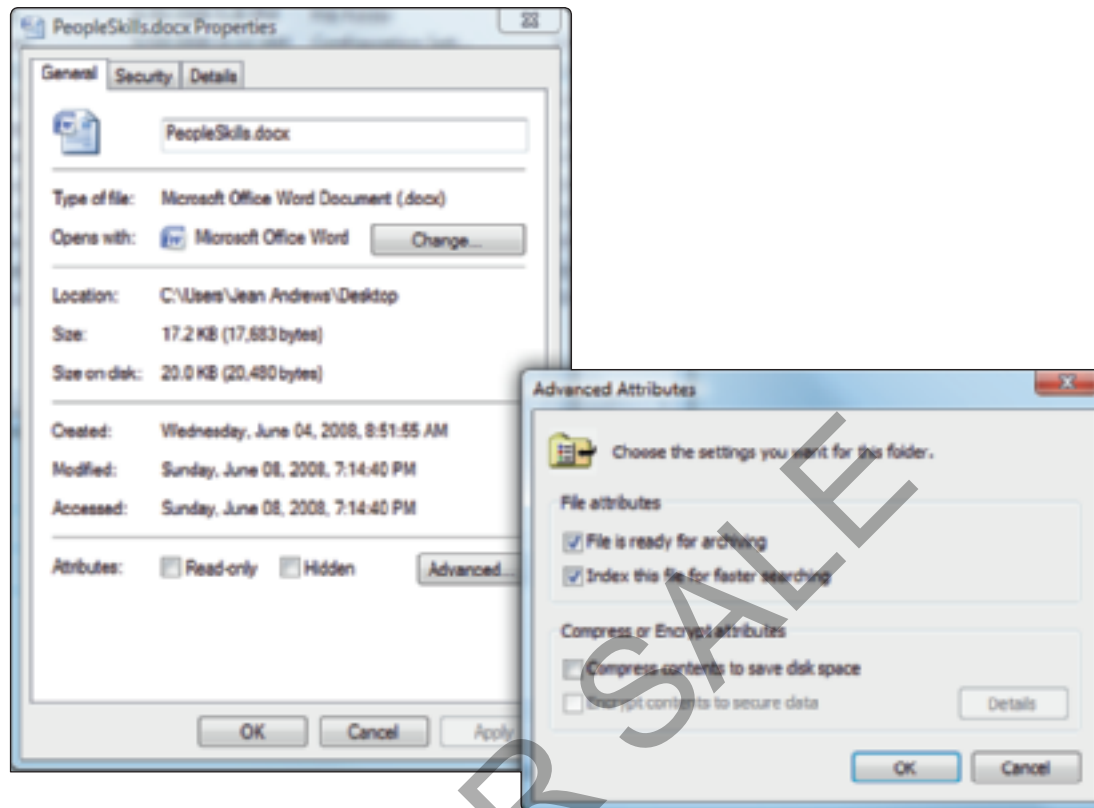


Figure 2-39 Properties of a file in Windows
Courtesy: Course Technology/Cengage Learning

A+
220-701
3.2

THE CONTROL PANEL

The Control Panel is a window containing several small utility programs called applets that are used to manage hardware, software, users, and the system. For Windows Vista and XP, to access the Control Panel, click **Start** and then click **Control Panel**. For Windows 2000, to open Control Panel, click **Start**, **Settings**, and **Control Panel**.

Figure 2-40 shows the Windows Vista Control Panel, and Figure 2-41 shows the Windows XP Control Panel in Category View. Select a category to see the applets in that category, or click **Switch to Classic View** to see the applets when you first open Control Panel as they are displayed in earlier versions of Windows.

Besides accessing the several applets in Control Panel from the Control Panel window, each applet can be accessed directly. You will learn how to do this as you learn to use these applets later in the book. For all the applets, if you know the name of the applet program file, you can launch the applet by using the Vista Start dialog box (called the Run dialog box in Windows 2000/XP). For example, to open the Mouse Properties applet, type **Main.cpl** in the Start box, and then press **Enter**. An applet has a **.cpl** file extension.



A+ Exam Tip

The A+ 220-701 Essentials exam expects you to be familiar with the Control Panel and its applets.

A+
220-701
3.2

2

A+
220-701



Figure 2-40 The Windows Vista Control Panel is organized by category, although you can easily switch to Classic View
Courtesy: Course Technology/Cengage Learning

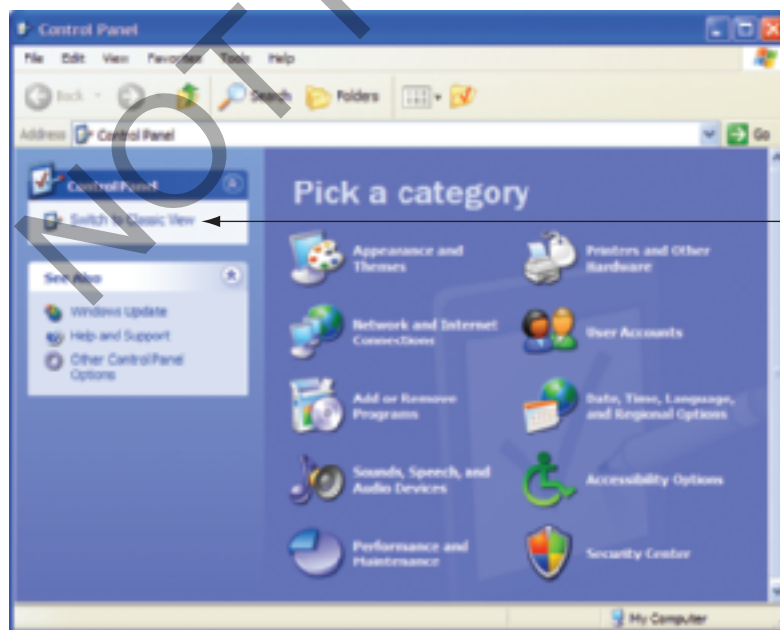


Figure 2-41 The Windows XP Control Panel
Courtesy: Course Technology/Cengage Learning

A+
220-701
3.2

SYSTEM INFORMATION UTILITY

The System Information utility (see Figure 2-42) gives a wealth of information about installed hardware and software, the current system configuration, and currently running programs. For example, you can use it to find out what processor or BIOS version is installed on the motherboard, how much RAM is installed, the directory where the OS is installed, the size of the hard drive, the names of currently running drivers, and much more. The System Information window is a composite of information available from several other windows and is especially useful when talking with a technical support person on the phone because it provides a broad technical view of information about the system.

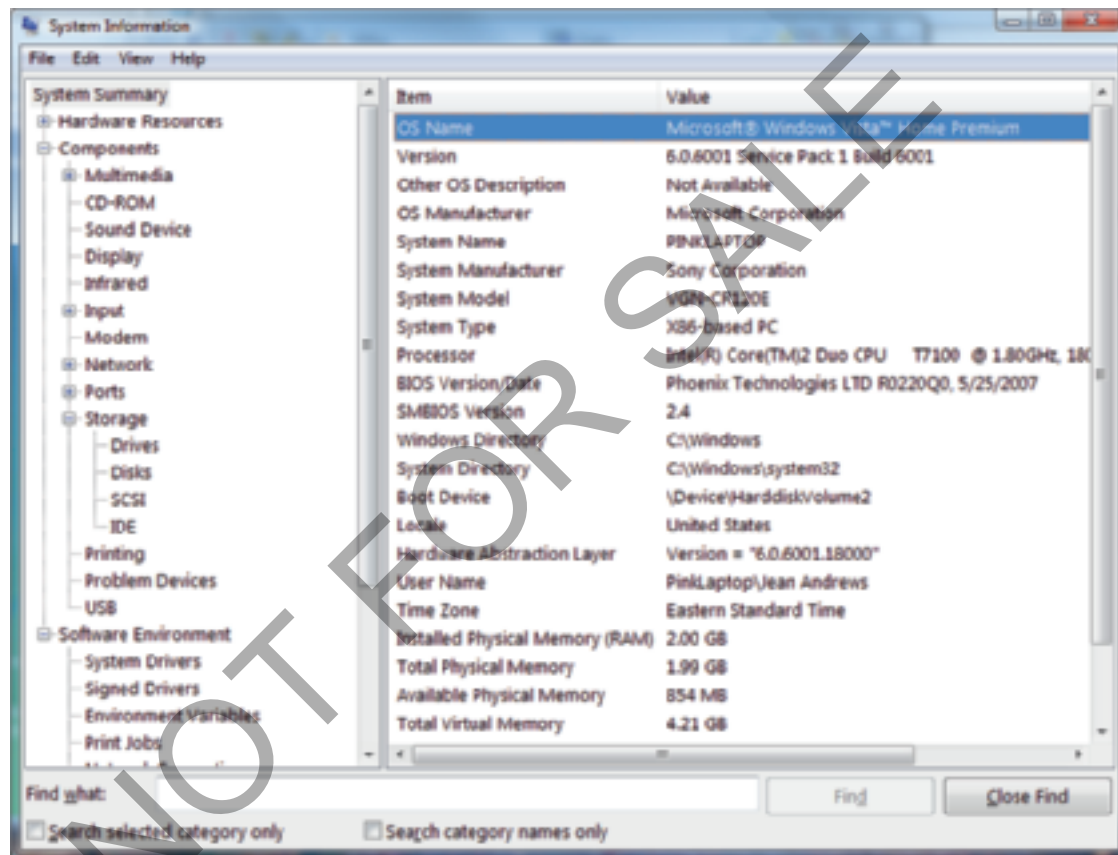


Figure 2-42 Use the Windows System Information utility to examine your system
Courtesy: Course Technology/Cengage Learning

To run System Information in Windows Vista, click **Start**, and enter **Msiinfo32.exe** in the Start box and press **Enter**. The System Information window opens. For Windows 2000/XP, click **Start**, click **Run**, enter **Msiinfo32.exe** in the Run dialog box, and press **Enter**.

System Information can be useful when strange error messages appear during startup. Use it to get a list of drivers that loaded successfully. If you have saved the System Information report when the system was starting successfully, comparing the two reports can help identify the problem device.



A+ Exam Tip

The A+ 220-701 Essentials exam expects you to be familiar with and know how to use the Windows 2000/XP/Vista desktop, Computer, My Computer, Windows Explorer, Control Panel, System Information, and the Command Prompt windows. All these tools are discussed in this section. If the utility can be accessed by more than one method, you are expected to know all of the methods.

A+
220-701
3.2

COMMAND PROMPT WINDOW

As you have already seen in this chapter, individual commands can be entered in the Vista Search box or the Windows 2000/XP Run box. However, you can also open a **command prompt window** and use it to enter multiple commands to perform a variety of tasks. To open the window, in the Vista Start box or the Windows 2000/XP Run box, enter **cmd.exe** and press **Enter**. Alternately, you can click **Start, All Programs, Accessories, and Command Prompt**. The Vista Command Prompt window is shown in Figure 2-43.

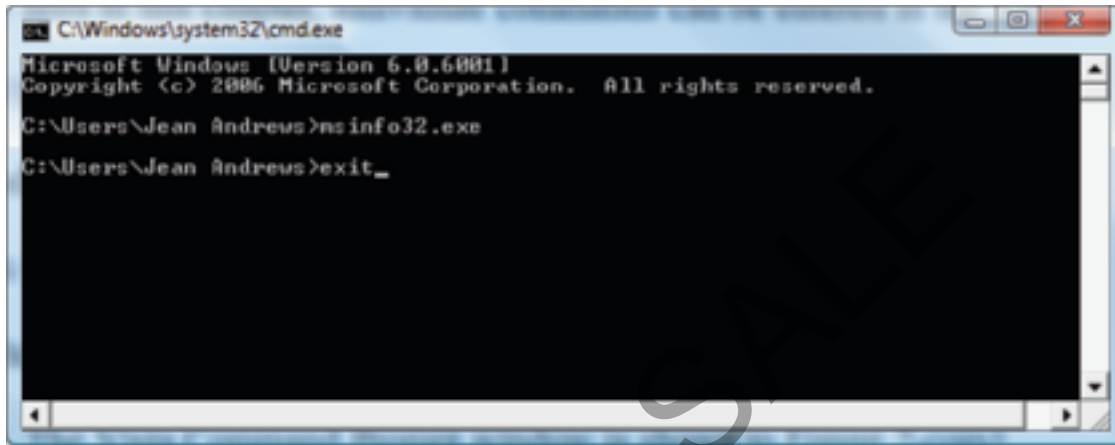


Figure 2-43 Use the Exit command to close the Command Prompt window
Courtesy: Course Technology/Cengage Learning

When you're working in the window, to clear the text in the window, type **cls** and press **Enter**. To close the window, type **exit** and press **Enter**, as shown in the figure. Alternately, you can click the X close window icon in the upper-right corner of the window. Throughout this book, you will learn many commands that work from this window, and you can also launch a program from this window. For example, when you enter the **msinfo32.exe** program name, the System Information window is launched.

Windows Vista has two levels of command prompt windows: a standard window and an elevated window. The standard window is shown in Figure 2-43. Notice in the figure that the default directory is the currently logged on user's folder. Commands that require administrative privileges will not work from this standard command prompt window. To get an **elevated command prompt window**, click **Start, All Programs, Accessories**, and right-click **Command Prompt**. Then select **Run as administrator** from the shortcut window and respond to the UAC box. The resulting command prompt window is shown in Figure 2-44. Notice the word

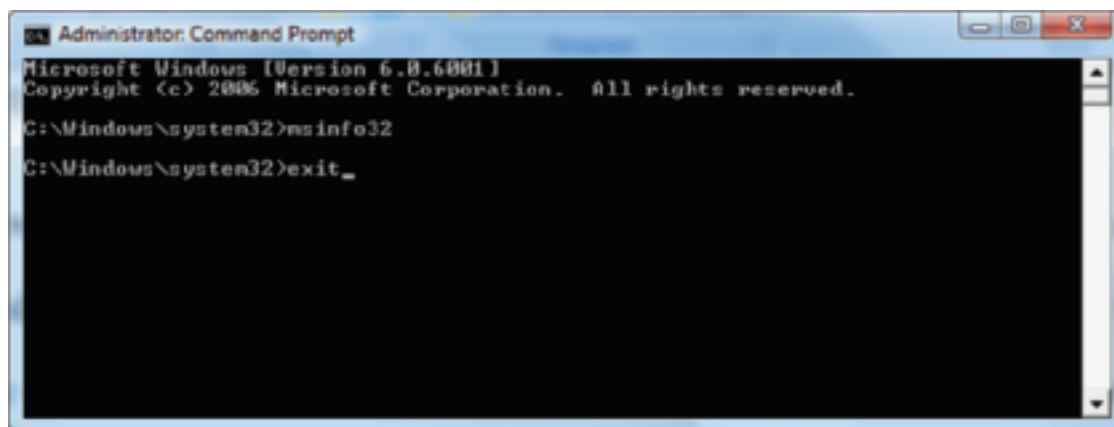


Figure 2-44 An elevated command prompt window
Courtesy: Course Technology/Cengage Learning

2

A+ 220-701

Administrator in the title bar, which indicates the elevated window, and the default directory, which is the %systemdrive%\Windows\system32 folder.

>> CHAPTER SUMMARY

- ▲ Operating systems that have been or are being used for desktop computers include DOS, Windows 9x/Me, Windows NT/2000/XP/Vista, Unix, a version of Unix called Linux, and the Mac OS. Windows 7 is the next Microsoft operating system.
- ▲ A dual boot makes it possible to boot a computer from one of two installed operating systems.
- ▲ A virtual machine is software that creates one or more logical computers on a physical computer.
- ▲ An operating system manages hardware, runs applications, provides an interface for users, and stores, retrieves, and manipulates files.
- ▲ Every OS is composed of two main internal components: a shell portion to interact with users and applications and a kernel portion to interact with hardware. In addition, an OS needs a place to store configuration information, which is normally stored in a database such as the Windows registry, or in text files, called initialization files.
- ▲ An application is launched as a Windows process which can then create multiple threads to the OS requesting tasks to be done.
- ▲ An OS manages hardware by way of device drivers or by using system BIOS (firmware). Sometimes, device drivers are considered part of the OS.
- ▲ Current processors can process 32 bits or 64 bits at a time. Most processors used with desktop or laptop systems are hybrid processors: They use a 32-bit core and can work using either a 32-bit instruction set or a 64-bit instruction set.
- ▲ Operating systems process either 32 bits or 64 bits. Microsoft calls 32-bit operating systems x86-based OSs. The term x64 applies to 64-bit OSs.
- ▲ 64-bit operating systems require 64-bit drivers.
- ▲ Each edition of Vista comes in 32-bit and 64-bit versions. Windows XP Professional comes in a 64-bit version.
- ▲ The Vista desktop differs from the Windows 2000/XP desktop in that Vista offers the Aero user interface and the sidebar with gadgets. Also, the Start menu is reorganized.
- ▲ Four ways to launch an application are to use the Start menu, the Search box (Windows 2000/XP Run box), Windows Explorer (similar to the Vista Computer or Windows 2000/XP My Computer window), or a shortcut icon.
- ▲ The right side of the taskbar is called the notification area, which some call the system tray.
- ▲ Windows uses the file extension to know which application to open to manage the file, which is called the file association.
- ▲ The Vista UAC box is used to protect the system against malware.
- ▲ Windows Explorer, the Vista Computer window, and the XP/2000 My Computer window are used to manage files and folders in secondary storage.
- ▲ System Information gives much information about the computer, including hardware, device drivers, the OS, and applications.

- ▲ Control Panel holds a group of applets to manage the system.
- ▲ Multiple commands can be issued from a Command Prompt window.

>> KEY TERMS

For explanations of key terms, see the Glossary near the end of the book.

administrator account	filename	service
Aero user interface	folders	service pack
backward-compatible	graphical user interface (GUI)	shell
Briefcase	HAL (hardware abstraction layer)	standard account
child directory	initialization files	subdirectory
command prompt window	kernel	system tray
Compressed (zipped) Folder	kernel mode	systray
desktop	netbook	taskbar
device driver	notification area	thread
distribution	operating system (OS)	User Account Control (UAC)
dual boot	original equipment manufacturer (OEM) license	dialog box
elevated command prompt window	patches	user mode
executive services	path	virtual machine (VM)
file attribute	registry	volume
file extension	root directory	

>> REVIEWING THE BASICS

1. Which Microsoft operating system was the first to use all 32-bit processing?
2. What are the hardware requirements to use the Vista Aero user interface?
3. What is the application mentioned in the chapter that creates a virtual machine on a computer?
4. List four major functions of an OS.
5. What is the next Microsoft operating system for desktop computers to be released in 2010?
6. The Windows shell operates in _____ mode and the kernel operates in _____ mode.
7. How many bits does an x86-based operating system process at one time?
8. What term does Intel use to describe a processor technology that uses all 64-bit processing?
9. What term does AMD use to describe the processor technology that uses a 64-bit instruction set with 32-bit internal core processing?
10. In question 9 above, what term does Intel use to describe the same technology?
11. Which Windows XP operating system is a 64-bit OS?
12. Which edition of Vista comes packaged with a 32-bit DVD as well as a 64-bit DVD?
13. What is the memory limitation for a 32-bit operating system?
14. On the Vista Start menu, where might you expect to be able to access user files?
15. How can you add the sidebar to the Vista desktop?
16. When is the Vista flip 3D view available to Vista?

17. What is the keyboard shortcut to the flip 3D view?
18. The taskbar notification area includes icons for currently running services. What is another term for this area?
19. What part of a filename does Windows use to know which application to open to manage the file?
20. When does a user need to enter a password into the UAC box in order to continue?
21. What extension is used to name a compressed folder?
22. What is the path and folder name to the desktop folder for the user Jane when Windows Vista is installed on drive C?
23. List five file attributes. Which attribute applies only to Vista?
24. How do you access the Properties box for a file to change an attribute?
25. What is the program name for the System Information utility?

>> THINKING CRITICALLY

1. If your printer is giving you trouble, what is the best way to obtain an update for the device driver?
2. What Windows tool can you use to know how much RAM is installed on your system?
3. Why is 16-bit Windows software considered to be legacy software?
4. Can you install Vista Ultimate 32-bit version or 64-bit version on an Intel Quad Core system manufactured in 2008?
5. Mary wants her x86-based version of Windows Vista Business edition to run faster. She has 4 GB of memory installed on the motherboard. She decides more memory will help. She installs an additional 2 GB of memory for a total of 6 GB, but does not see any performance improvement. What is the problem and what should you tell Mary?
 - a. She should use Device Manager to install the memory in Vista. After it is installed, performance should improve. Tell Mary how to open Device Manager.
 - b. A 32-bit OS cannot use more than 4 GB of memory. Tell Mary she has wasted her money.
 - c. A 32-bit OS cannot use more than 4 GB of memory. Tell Mary to upgrade her system to the 64-bit version of Vista Business.
 - d. A 32-bit OS cannot use more than 4 GB of memory. Explain to Mary the problem and discuss with her the possible solutions.
6. Jack needs to e-mail two documents to a friend but the files are so large his e-mail server bounced them back as undeliverable. What is your advice?
 - a. Tell Jack to open the documents and break each of them into two documents and then e-mail the four documents separately.
 - b. Tell Jack to put the two documents in a compressed folder and e-mail the folder.
 - c. Tell Jack to put each document in a different compressed folder and e-mail each folder separately.
 - d. Tell Jack to put the documents on a USB drive and snail mail the drive to his friend.

>> HANDS-ON PROJECTS**2****PROJECT 2-1:** Using the System Information Utility

Do the following to run the System Information utility and gather information about your system:

1. In the Vista Search box or the XP/2000 Run box, type **Msinfo32.exe** and press **Enter**. The System Information window opens.
2. Browse through the different levels of information in this window and answer the following questions:
 - a. What OS and OS version are you using?
 - b. What is your CPU speed?
 - c. What is your BIOS manufacturer and version?
 - d. How much video RAM is available to your video adapter card? Explain how you got this information.
 - e. What is the name of the driver file that manages your parallel port? Your USB ports?

PROJECT 2-2: Using a Freeware Diagnostic Utility

You can download many freeware diagnostic utilities from the Internet and use them to examine, troubleshoot, and benchmark a system. Do the following to download and use one utility to examine your system:

1. Go to the CNET Networks Web site at www.download.com and use the Web site search box to search for Fresh Diagnose. Download the utility, saving it to a folder on your hard drive named **Downloads**.
2. Double-click the file to execute the program and install the software. When given the opportunity, choose to create a shortcut to the software on your desktop.
3. Double-click the shortcut to run the Fresh Diagnose program.
4. Browse through the Fresh Diagnose menus and answer the same questions listed in Project 2-1 for the Windows 2000/XP/Vista System Information utility.
5. Compare the two utilities, Fresh Diagnose and System Information, by answering the following questions:
 - a. Which utility is easier to use and why?
 - b. Which utility gives more information about your system?
 - c. What is one advantage that System Information has over Fresh Diagnose?
 - d. What is one advantage that Fresh Diagnose has over System Information?
 - e. Which utility do you prefer and why?

PROJECT 2-3: Using the Taskbar

Using a Windows 2000/XP/Vista computer, do the following and answer the following questions about the taskbar:

1. List the items in the Quick Launch area of the taskbar. What is the program name and path to each item?
2. List the items in the notification area (system tray) of the taskbar. Don't forget to list the items hidden in this area. Investigate and describe the purpose of each program.
3. Move the taskbar from the bottom of the screen to the left side. List the steps you took to do that.
4. If you are using a Vista computer, press **Win+Tab** and describe the results. Are you using the Vista Aero user interface?

PROJECT 2-4: Practicing Keystrokes

Refer to Appendix B, *Keystroke Shortcuts in Windows*, for help with this project. Disconnect your mouse and then practice using the keyboard in case you must troubleshoot a system when the mouse does not work. Do the following:

1. Open Explorer and display the files in the root directory of drive C. List the steps and keystrokes you used to do this.
2. Unhide all the files in this folder. From the Tools menu, select **Folder Options**, select the **View** tab, and then select **Show hidden files and folders**. Also uncheck **Hide extensions for known file types** and uncheck **Hide protected operating system files**. List the steps and keystrokes you used.
3. What is the exact size of the file Pagefile.sys in bytes, and the date and time the file was last modified?

PROJECT 2-5: Using Windows Explorer

Do the following to practice using Windows Explorer:

1. Open Windows Explorer.
2. Create a folder under the root directory of the hard drive called \Temp. List the steps you took.
3. Add a subfolder to \Temp called \MyFiles. List the steps you took.
4. Create a text file in the MyFiles folder named **Text1.txt**. List the steps you took.
5. Create a shortcut to that folder on the Windows desktop. List the steps you took.
6. Rename the file **Text2.txt**.
7. Double-click the shortcut on the desktop. What error did you get?
8. To clean up after yourself, delete the \Temp folder and the shortcut.

>> REAL PROBLEMS, REAL SOLUTIONS**2****REAL PROBLEM 2-1: Becoming a PC Support Technician**

You've just been hired as a PC support technician in the IT department of your university. At the job interview, you were promised a two-week training period, but by noon on your first day on the job it dawns on you that "training period" means you gotta train yourself *really quick*! Listed below are some problems you encounter that day. How do you solve these problems and what Windows tools do you use?

1. A history professor calls you into his office and tells you he thinks the memory on his Vista computer needs upgrading. He wants you to tell him how much RAM is currently installed. What do you do?
2. A PE instructor discovers the history professor has Windows Vista on his desktop. She thinks she has Windows XP on her desktop and wants you to tell her exactly which OS she has installed. What do you do?
3. Your boss asks you to go down the hall to the Windows XP computer in the break room and find out the path and name of the device driver for the optical drive (CD drive or DVD drive) that is installed. What steps do you use? What is the path and name of the optical drive device driver on your Windows XP or Vista system?
4. The Office Administrator for Career Education uses MSWord often and wants you to place a shortcut on her desktop to launch this application. List the steps to do that.
5. A student in a computer lab is trying to answer a question in the lab about the Windows Vista sidebar. She needs to add a gadget to the sidebar to show the current temperature in Seattle. What steps do you give her to find the answer? Print the screen showing the gadget. List the steps you took to print the screen.

REAL PROBLEM 2-2: Becoming a PC Technician Researcher

Windows Help might provide useful information when you try to resolve a problem. To access Windows Help, click **Start**, and then click **Help and Support**. Also, the Microsoft Web site (<http://support.microsoft.com>) has lots of information on troubleshooting. Search for the device, an error message, a Windows utility, a symptom, a software application, an update version number, or keywords that lead you to articles about problems and solutions. You can also go to www.microsoft.com to browse for links on hardware and software compatibility. Other sources of help are user and installation manuals for applications and hardware devices, training materials, and the Web sites of application and device manufacturers. You can also use a search engine such as Google (www.google.com). Enter the error message, software application, symptom, or Windows utility in the search box to search the Web for answers, suggestions, and comments.

**Notes**

If you are serious about learning to provide professional support for Windows, each OS has a resource kit, including support software and a huge reference book containing inside information about the OS. Check out *Microsoft Windows Vista Resource Kit*, *Microsoft Windows XP Professional Resource Kit*, or *Microsoft Windows 2000 Professional Resource Kit*. All three are put out by Microsoft Press.

Beware, however, that you don't bump into a site that does more harm than good. Some sites are simply guessing, offering incomplete and possibly wrong solutions, and even offering a utility it claims will solve your problem but really contains only pop-up ads or spyware. Use only reputable sites you can trust. You'll learn about several of these excellent sites in this book.

Answer the following questions using any of the resources mentioned previously:

1. You have just purchased Vista Home Premium edition, which comes on a 32-bit DVD. List the steps to buy the 64-bit DVD version of Vista Home Premium. What sources of information did you use?
2. Your Vista system is slow and you decide to turn off the Aero user interface to save on resources. List the steps to do that and the source of information you used.
3. You have upgraded your Windows XP system to Vista but now the network connection will not work. You realize you need to install Vista drivers for the network port that comes directly off your ASUS P4P800 motherboard. What is the name of the driver file you need to download and how did you find it?
4. Your friend has asked you if you know how to turn off the UAC box so it never appears on his Vista system. List the steps to do that and the source of information you used.
5. What was the first Intel processor to use the EM64T technology? What is your source of information?

NOT FOR SALE