

A. Installation

B. Operating
instructions

CONTENTS

Part A Installation

CONTENTS	4
IMPORTANT NOTES	4
SAFETY NOTES	5
INSTALLING THE COMPONENTS	8
INSTALLING THE APPLICATION SOFTWARE AND THE DRIVER (PC).....	8
INSTALLING THE APPLICATION SOFTWARE AND THE DRIVER (MAC).....	9
INSTALLING THE SCANNER	9

Part B Operating instructions

INSERTING SLIDES	10
SCANNING SLIDES	12
SCAN SOFTWARE CYBERVIEW X – MS	16

Part A Installation and Part B Operating instructions are included as Adobe PDF file on the CyberView X – MS-CD. The file will be installed with the driver and will be available on the computer after the installation without the CD.

Note:

The CyberView X software and the TWAIN plug-in are being developed permanently. It is recommended to regularly check the home pages of the manufacturers for driver updates.

The driver updates can be stored without previously installing the software.

It is recommended to download the latest software version on the Internet so that it can be used for the initial installation.

CONTENTS

Please check the box for completeness.

E
N
G
L
I
S
H



Note!

Save the original box, receipt and packaging material in case you have to return the scanner.

CONTENTS

- Slide scanner 3600
- magazine
- power adapter and power cord



Warning!

Using a different power adapter may severely damage the scanner and will void the product warranty.

- USB-2.0 cable
- IEEE-1394 cable
- CD with CyberView X – -MS drivers (PC and Mac)
- CD with Adobe Photoshop Elements and Adobe Photoshop Album

IMPORTANT NOTES

- The reproduction of this manual in whole or in part without the manufacturer's written permission is prohibited.
- The information contained in this manual and the hardware and software are subject to change without notice.
- The manufacturer is not liable for damages of film material resulting from the use of this scanner.
- The manual was compiled with greatest diligence. In case you detect errors we would be grateful to receive notification thereof through the respective section on our home page.

SAFETY NOTES

Please observe the following safety notes in order to avoid damages of the scanner or injuries to yourself or other persons.

Do not modify the scanner

Inside the housing, there are energized parts. Do not open the housing. There is the risk of fire or electrical shock. Have any repair work carried out by authorized dealers.

Do not touch parts inside the scanner or of the power adapter

In case the scanner or the power adapter is damaged (e.g. when falling down) do no longer use the scanner or power adapter. There is the danger of suffering an electrical shock. Disconnect the power cord from the power outlet and contact the manufacturer's after-sales service.

In case of unusual incidents, switch of the scanner immediately and disconnect from the power outlet

If the scanner or the power adapter emits unusual sounds or odors or if smoke escapes, switch of the scanner immediately and disconnect it from the power outlet.
There is the risk of fire in case of continued operation!
Have the manufacturer's after-sales service repair the scanner. Do not try to repair it yourself - you will expose yourself to severe risk.

Make sure that no objects enter the housing

Do not place objects on top of the scanner housing (by no means containers filled with liquids).
Objects or liquids entering the scanner result in the risk of fire or electrical shock. In addition, the scanner may be damaged.

Do not operate the scanner near flammable gas or when dust generates

The non-compliance with this precautionary measure results in the risk of fire and explosion.

Keep children away from the scanner

The scanner contains parts small enough to swallow which represents a special danger for infants. In case a child swallows a part of the scanner, consult a physician immediately.

Do not touch the power cord during periods of lightning activity

Do not operate the scanner during periods of lightning activity. You might suffer an electrical shock via the electrical cords. The scanner may also be damaged. Disconnect the scanner from the power outlet during electrical storms.

Ensure the correct power connection

The scanner must be operated with a power connection of 50/60 Hz and 100 to 240 V. Use only power cords which are approved for these values and which meet the safety regulations of your country.

Observe the necessary safety regulations when using the power cord

Make sure the power cord is not damaged. Do not make any modifications to the power cord. When heavy objects are placed on the cord, if the cord is subject to heat or open fire or if it is excessively stretched or twisted, there is the risk of fire or electrical shock.

If the power cord insulation is damaged or if wires are blank contact the manufacturer's after-sales service immediately. Do not use damaged power cords, there is the risk of fire or electrical shock.

Do not touch the power cord with wet or damp hands. The non-compliance with this precautionary measure results in the risk of an electrical shock.

Do not play the CD-ROMs with an audio CD player

The CD-ROMs supplied with the scanner shall not be played with an audio CD player. Playing a CD-ROM with an audio CD player may damage the hi-fi system and produce sounds which can seriously damage the hearing (or even result in a complete loss of hearing).

**Operating ambient temperature range
+50° to +104°F (+10° to +40°C)**

Do not turn on the scanner unless it is within this range.

If the scanner has been stored or transported outside of this range, allow it to return to within this range before turning it on.

**Operating ambient humidity range
15% to 76% relative humidity (non-condensing)**

If the scanner was stored or transported in cold temperature and then brought into a warm, humid environment condensation may occur. Allow the scanner to fully adapt to the room temperature before turning it on.

INSTALLING THE COMPONENTS

INSTALLING THE APPLICATION SOFTWARE AND THE DRIVER (PC)



If you have installed Windows XP on your system a test dialog may appear during installation. In this case, select "**Continue anyway**".

1. Place the Adobe Photoshop Elements software CD into your CD-ROM drive. If you have the autoplay function switched off search the CD for the "Autoplay.exe" file and open it with a double click. Follow the on-screen instructions to complete the installation and remove the CD from the drive.
2. Place the CyberView X – MS CD (PC version) into your CD-ROM drive. If you have the autoplay function switched off search the CD for the "Launch.exe" file and open it with a double click.
3. Click on "CyberView X" to start the installation wizard. Follow the on-screen instructions to complete the installation.
4. There may be additional test software products on the installation CD. If they are installed follow the on-screen instructions to complete installation.

Note: If you have Windows XP installed DO NOT remove the CyberView X – MS CD after rebooting.

5. Set the switch for the scanner connection to the USB or IEEE-1394 interface and use the supplied USB or IEEE-1394 cable to connect the scanner to the computer.
6. After rebooting switch on the scanner. The operating system will recognize the hardware connected to the USB or IEEE-1394 interface and searches the respective driver.
7. In the "Found New Hardware Wizard" window, select "Install the software automatically (Recommended) and click "Next".
8. In the "Completing the Found New Hardware Wizard" window, click "Finish", then remove the CD.
9. The installation is completed.

INSTALLING THE APPLICATION SOFTWARE AND THE DRIVER (Mac)



Mac users shall install the application software (Adobe Photoshop Elements) prior to installing the scanner driver CyberView X – MS.

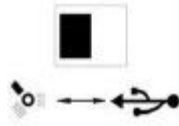
If a TWAIN compatible application software or a Mac plug-in is already installed on your computer you can install the scanner driver directly.

1. Place the Adobe Photoshop Elements software CD into the CD-ROM drive and double click on the "Adobe Photoshop Elements" icon in order to install the application. Remove the CD.
2. Place the CyberView X – MS software CD into the CD-ROM drive. The icon for the CyberView X – MS CD will appear on the desktop.
3. Double click on the "CyberView X – MS" icon.
4. Double click on the "CyberView X – MS Installer" folder in order to install the driver.
5. There may be additional test software products on the installation CD. If they are installed follow the on-screen instructions to complete installation.

INSTALLING THE SCANNER

1. Make sure the scanner is switched off.
Remove the transportation adhesive straps on the inserted magazine.
2. Check the USB/IEEE 1394 switch on the scanner connection.

Set it to the  symbol for the IEEE-1394 interface or to the  symbol for the USB interface.



3. The scanner shall only be operated with the voltage specified on the scanner. Connect the power cord to the power adapter. **At first**, connect the power cord to the mains supply, then connect it to the scanner.
4. Connect the appropriate end of the USB or IEEE-1394 cable to the respective socket on your computer. Connect the other end to the appropriate connection on the scanner.
5. Switch on the scanner. The slide transport arm will extend. Do not push the arm back during warming up.

OPERATING INSTRUCTIONS

INSERTING SLIDES

E
N
G
L
I
S
H

Inserting a magazine

Push the slide transport arm fully into the scanner (Fig. 1) and insert the magazine from the back until it touches the slide transport arm (Fig. 2). Make sure that the magazine moves easily.

Make sure there are no objects next to the scanner for the slide transport arm to extend fully (<10 cm).

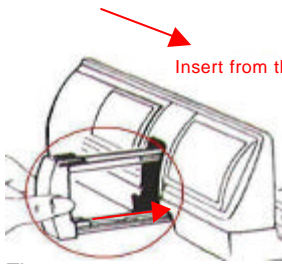


Fig. 1

Insert from the back

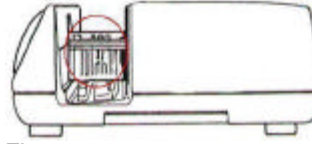


Fig. 2

Loading various magazines

Paximat round magazine

- Pull out the slide transport arm fully.
- Load the magazine from the top into the magazine tunnel so that the open side points to the scanner. The inner ring shall contact the guiding pins.

Note: The round magazine shall be filled evenly with slides.

CS magazine

- It is recommended to use the original CS system (reflecta, Braun) exclusively. Other CS magazines or CS frames may lead to disturbances.

Universal magazine

- Use only magazines with a DIN 108 label. Other magazines may lead to disturbances.
- Pull out the slide transport arm fully.
- Gently press the orange adapter on the slide transport arm. Move the adapter on the slide transport arm to the front until it snaps in.
- Push the slide transport arm back into the scanner.
- Load the magazine from the back in the respective guiding rails of the magazine tunnel until it hits the slide transport arm.

For all other magazines (except for the universal magazine described above), you must return the adapter to its original position at the grip of the slide transport arm. To release the adapter, gently press its outer tip.

Removing a magazine

Pull out the slide transport arm fully and remove straight magazines to the front or back. Lift round magazines to the top.

TIP: Do not tilt the magazine to the open side since slides may fall out.

Moving magazine backward/forward

You can insert the next or previous slide in the magazine for scanning by pressing the respective arrow button (◀ or ▶) in the lateral control panel (see Fig. 3).

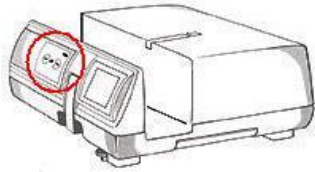


Fig. 3

As an alternative, you can use the arrow buttons in the CyberView X – MS GUI to move the magazine.

Previewing individual slides

Insert the slide into the slide viewer at the side of the scanner for previewing (Fig. 4). Gently press the slide onto the "mini light table" to switch on the necessary light. The scanner must be switched on.

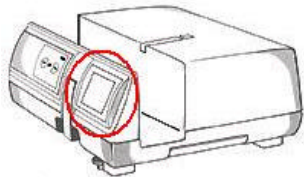


Fig. 4

Inserting single slides without magazine

Using the slide lift, you can scan single slides. To insert a slide, press on the green eject button (Fig. 5) and the slide holder will lift-up.

Place the slide into the slide lift and press the slide holder down until it snaps in (Fig. 6).

Note!

When using the single slide scanning function, please make sure that the slide lift snapped into place and that the slide transport arm has been moved completely into the scanner.

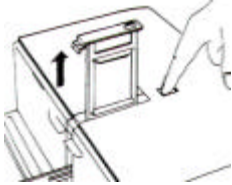


Fig. 5



Fig. 6

The magazine tunnel should be empty or an empty magazine should be loaded correctly since the slide transport arm moves out during warm-up and calibration.

SCANNING SLIDES

Starting the program

Load the magazine into the scanner and open the Adobe Photoshop Elements or another TWAIN compatible application software.

When using Adobe Photoshop Elements, select File → Import → CyberView X - MS ... to open the TWAIN driver.

Information about Adobe Photoshop Album

(Please refer to the Adobe Photoshop Album manual for additional details.)

Open the Photoshop Album program and select File → Get Photos → From Scanner...". Select CyberView X - MS to open the TWAIN driver.

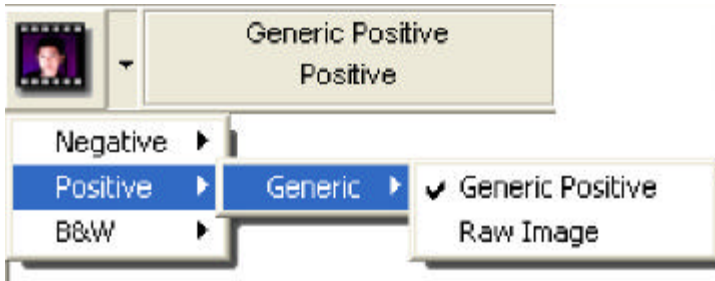
With the CyberView X software, you can scan directly onto your hard disk without using an application software.

Basic settings for scanning

Selecting the film type (PC)

Select the film type, the manufacturer and the brand. If the film type is not specified explicitly the best results will be obtained using the Generic setting.

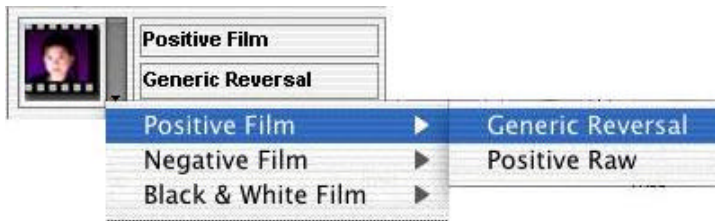
Example: For a positive film, select Positive → Generic → Generic Positive.



Selecting the film type (Mac)

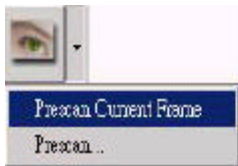
Select the film type and the model.

Example: For a positive film, select Positive Film → Generic Reversal.



Previewing the scan

Select Prescan Current Frame to pre-scan a single slide or Prescan... to create a selection of slides for pre-scanning.



Single prescan



Multi prescan

Settings for the scanning process

Define the resolution, the color depth and the quality of the slide scan.

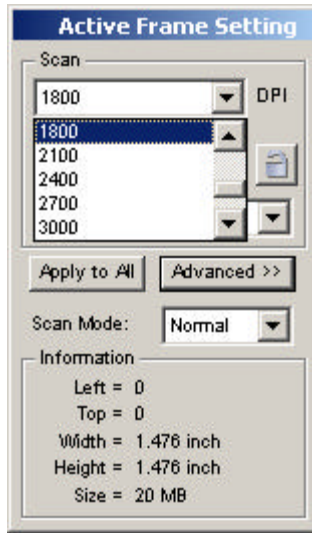
If you do not specify values the settings defined in the Preference dialog (Scan -> Preference...) are used for the scan.

Note: The higher the resolution, the more scanning time is needed and larger storage space required.

The following table lists the required storage space for a slide 24x36 mm, slides with 40x40 mm require appropriately more space.

Scan resolution in dpi	Color depth in bit	Required storage space as tif file in MB (approx.)	Required storage space as jpg file in MB (approx.)
1200	8	5	0.5
1800	8	11.7	1
2400	8	21	1.2
3000	8	33	2.3
3600	8	47	3.2
1200	16	11	0.5
1800	16	23.5	1
2400	16	42	2
3000	16	66	2.4
3600	16	94	3.3

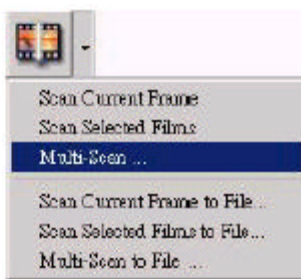
For the jpg file format, the quality BEST was used to store the scans listed above.



Starting the scan process

Select Scan Current Frame to scan the slide loaded into the scanner, Scan Selected Films to scan the slides selected in the preview, or Multi-Scan... to specify the number of slides in the magazine you want to scan.

You can select the same functions to store one or several slides directly to a file.



Scanning single slides

When you press the scan button (●) in the lateral control panel of the scanner, the current slide will be scanned automatically and transferred to the opened application software.

Exiting the program

After scanning the slides, the images are transferred to the application software (e.g. Adobe Photoshop Elements) or stored to the specified storage location. Click on the X in the top right corner of the screen or select Scan -> Exit to close the driver. You can now edit, save and print the images with the application software.

Description of CyberView X – MS

The CyberView X software (CVX) can be used in two different ways:

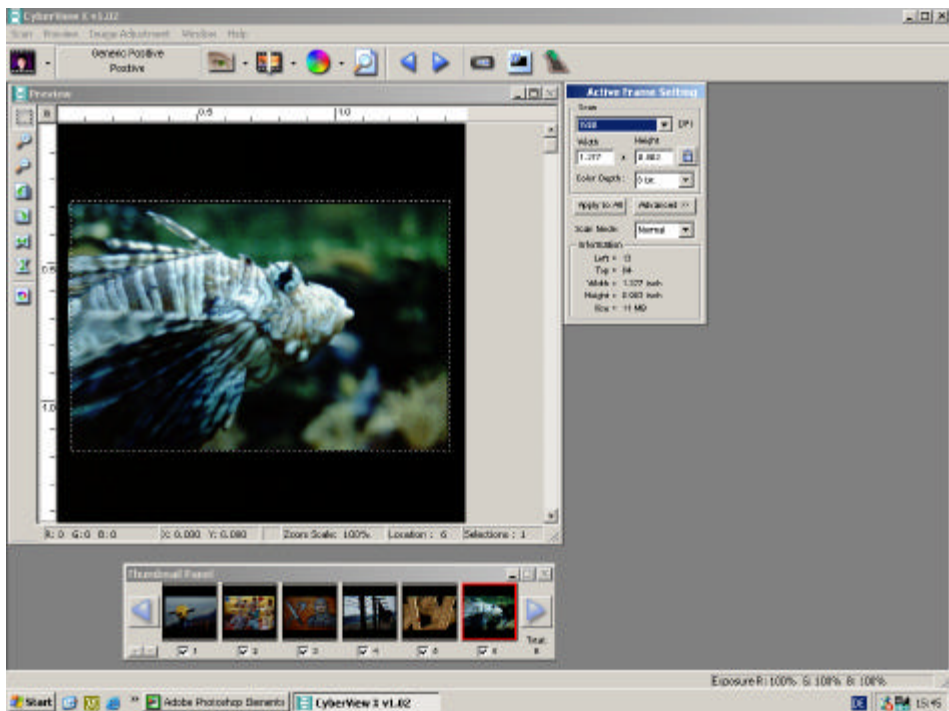
1. as independent program
2. as TWAIN driver directly from other programs.

E
N
G
L
I
S
H

The user interface and the functioning of the program differ only slightly. With the TWAIN driver, the Scan menu offers options where you can define to transfer the scanned data to the calling program or directly to the hard disk. When CVX is started as independent program, the data can be stored to the hard disk only (see 1.1.1 Scanning).

The CyberView X user interface consists of four areas:

1. the main window with the menu bar to select the scan commands and to control the scanner
2. the preview window
3. the window with the preference for the active image
4. the window with the thumbnail panel to select the active image and the images to be scanned



1. Main window

1.1 Menu bar

1.1.1 Scan



Prescan:

- Prescan Current Frame
- Prescan...

In contrast to the Prescan Current Frame option where a single slide is scanned, you can use the Prescan... option to enter a range. Individual ranges are specified using a hyphen (-), several ranges or single slides are separated by a comma.

Example: 1-5,10,12,20-25.

Scan:

- Scan Current Frame
- Scan Selected Films
- Multi-Scan ...

- Scan Current Frame to File ...
- Scan Selected Films to File ...
- Multi-Scan to File ...

The first three menu items of the Scan sub-menu are displayed only when CVX is started as TWAIN driver. In contrast to the other menu items, the corresponding scan is transferred to the program where CVX was started. When CVX is used independently, the scan(s) are saved as files to the hard disk.

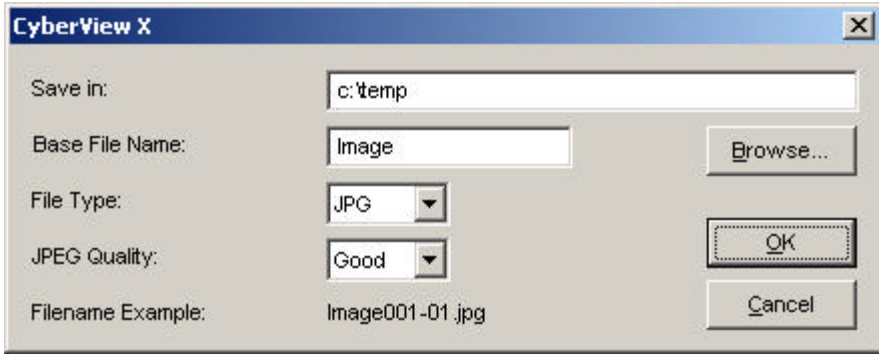
The differences of the menu items are as follows:

- Scan Current Frame: The slide currently in the scanner will be scanned.

- Scan Selected Films: This option is only available after a pre-scan. The images of the pre-scans can be selected in the Thumbnail Panel. Please refer to the corresponding section for a detailed description.
- Multi-Scan...: When you select this menu item, you are prompted to enter the

number of scans you want to perform. The scans are performed starting from the current position of the magazine.

When you select Scan ... to File..., you are prompted to enter the storage location, the base file name, the file type and the quality (JPEG) of the image(s).



- Enter the desired path or click on the Browse... button to select a path.
- Enter the name of the first image in the Base File Name field.
- Select the file type.
- If the image is stored as JPG file select the quality of the image in the JPEG Quality field.

The images are numbered automatically, where the first three digits correspond to the numbering of the scan, the next two digits define the selection frame of the scan (see preview window section).

These two digits may be omitted.

- Revert

All modifications of the current preview windows are discarded and the image is displayed in its original state in the preview window.

- Preference...

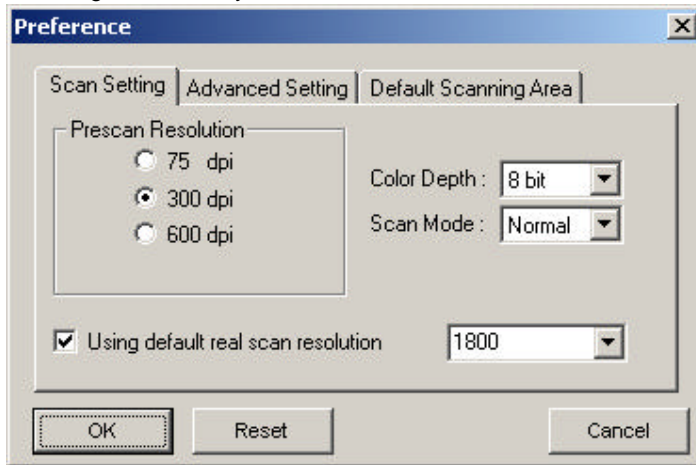
This section is divided into three 3 sub-windows:

1.1.1.1.Scan Setting

You can define the resolution, the color depth and the scan mode for the pre-scans and the scans.

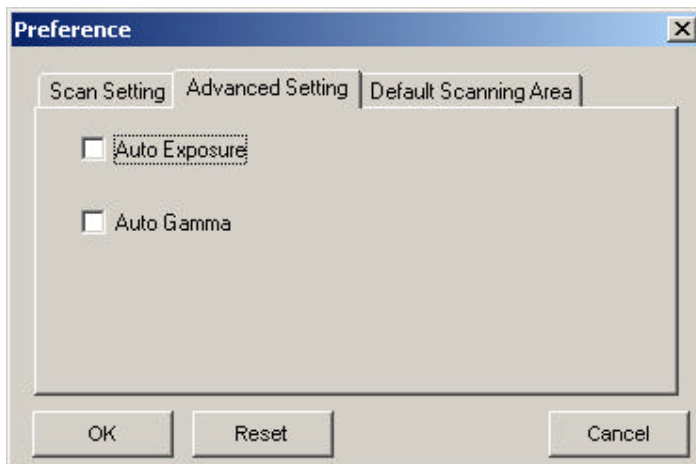
Note for the color depth: Please note that various programs cannot work with a 16 bit color depth.

Note for the scan mode: When using the Quality option, the scan will be slower resulting in less noisy scans.



1.1.1.2.Advanced Setting

You can set the CVX program to perform an automatic exposure correction (Auto Exposure) and/or an automatic gamma correction (Auto Gamma).



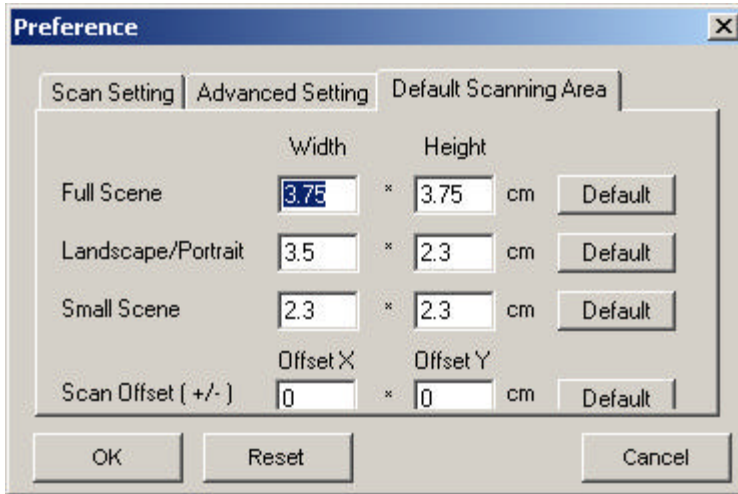
1.1.1.3. Default Scanning Area

CVX recognizes three different scan formats.

You can specify the slide sizes to be used automatically for the pre-scans and a scan offset to position the actual slide section.

Please note that the x/y values for the offset must correspond to the coordinate values as required by Adobe Photoshop.

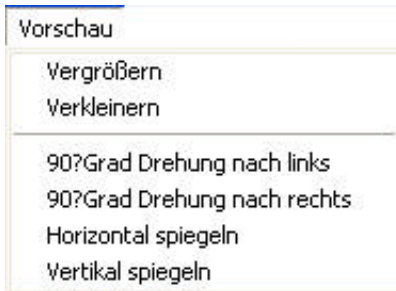
+x and +y moves the slide to the right/down.



- Exit

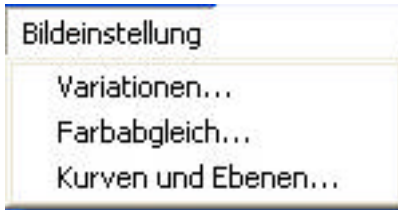
The CVX user interface is closed. The system returns to the calling program if applicable.

1.1.2 Preview



- Zoom In: CVX changes the mouse pointer to a magnifying glass. When you now click in the preview window, the pre-scan is magnified.
- Zoom Out: When you click in the preview window, the pre-scan is reduced.
- Rotate 90 Left: The preview is turned 90 degrees counter clockwise.
- Rotate 90 Right : The preview is turned 90 degrees clockwise.
- Flip Horizontal: Flips the preview horizontally.
- Flip Vertical: Flips the preview vertically.

1.1.3 Image Adjustment



You can use the Variations..., Color Balance..., and Curves and Levels... menu items to adjust color and contrast. The settings supplement or add to each other.

In the bottom area of the Image Adjustment window, you can save the settings defined in the three windows to be used for other scans.

Please note that the settings will only be valid for the current slide (the one displayed in the preview). In order to transfer the settings to other slides, you can save and load the settings.

Note:

The Reset All button restores the settings of all three areas. In order to only reset the changes of the current area, press the button with the green arrow.

Press the OK button to confirm your entries and transfer the modifications to the preview.

In case you pressed this button erroneously, activate the Image Adjustment window again and press the Reset All button. This will restore the settings to the original state.

The Cancel button discards your changes like the Reset All button. If your settings were not saved they will be lost irrevocably. In addition, the window will be closed.

Note: If you activated the Image Adjustment window using the button

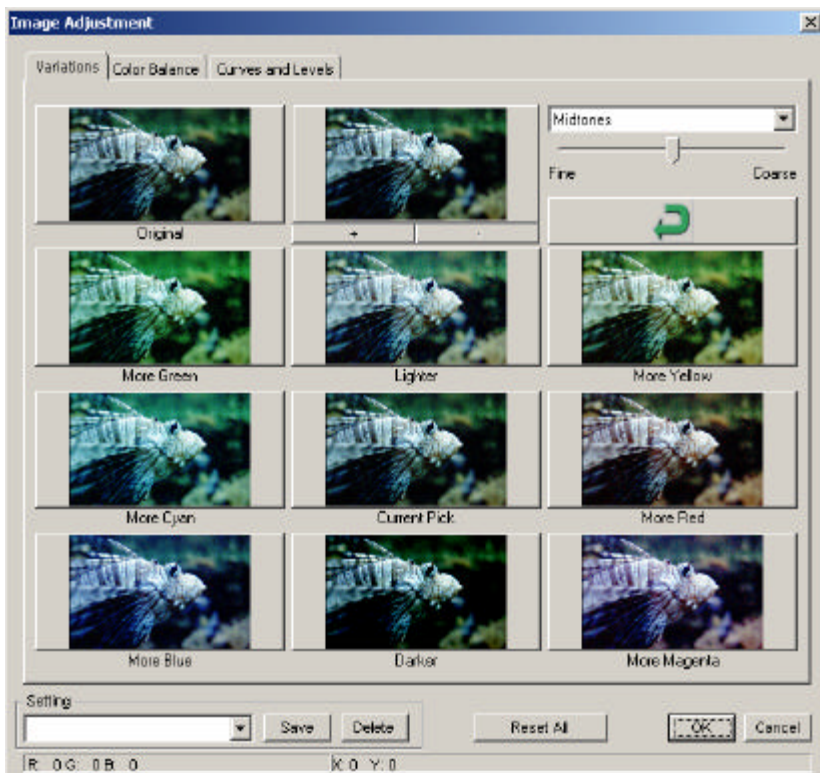


the changes are applied to the active frame only.

1.1.3.1. Variations

In this window, you can correct the colors and the brightness of the scan using the three areas "Shadows", "Midtones" and "Highlights" with a corresponding setting between Fine (for little change) and Coarse (for great change).

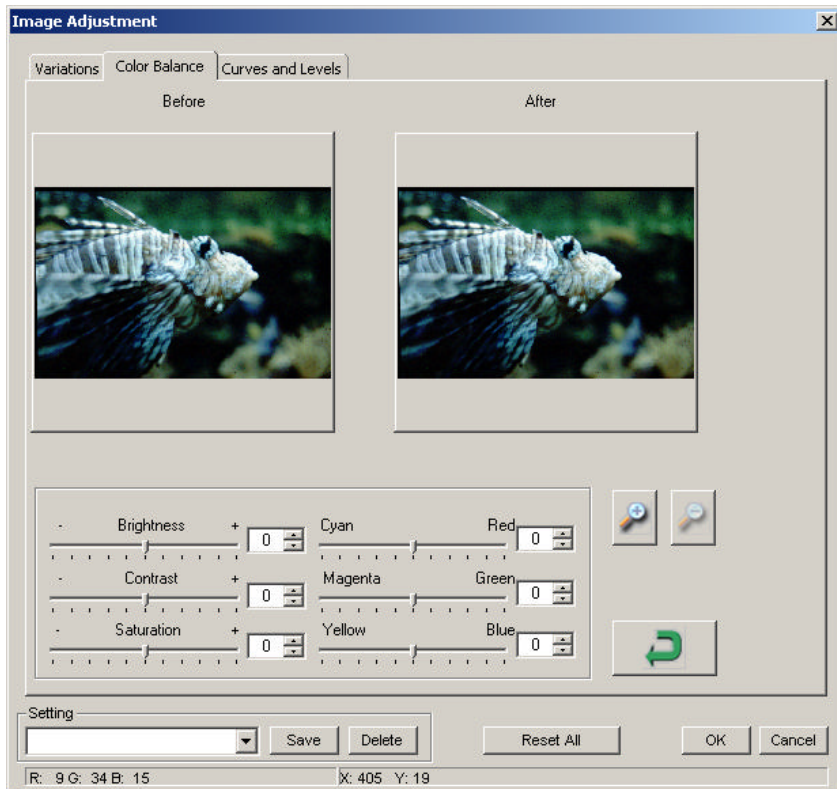
Prior to correcting the scan, set the area and the degree. Now, click on one of the corrected images to accept the correction. The image next to the original image shows the cumulative modifications of your image. You can zoom in and out using the + and – buttons to have a closer look at the changes.



1.1.3.2. Color Balance

The values for brightness, contrast, saturation and color (CMY or RGB) of the image can be adjusted with the sliders or by entering the values in the corresponding fields.

You can use the buttons with the magnifying glasses to zoom in and out the Before and After windows to have a close look at the changes.

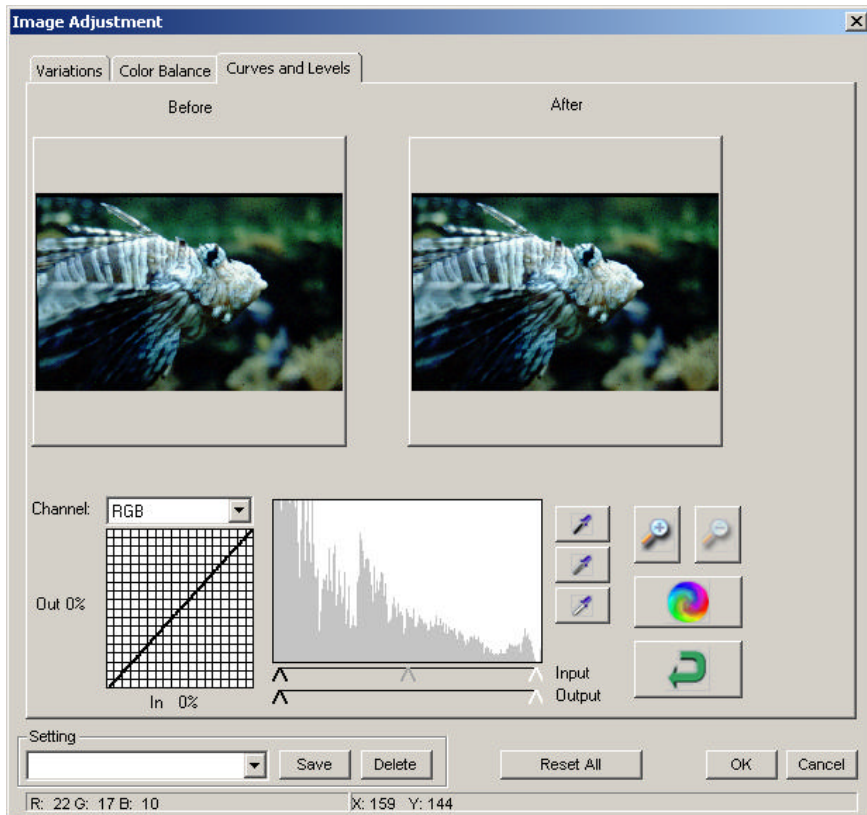


1.1.3.3. Curves and Levels

You can adjust the color values through gamma correction. As in the Color Balance window, you can use the magnifying glasses buttons to zoom in the Before and After windows to have a close look at the modifications. You can use the three buttons with the pipettes to set a black, gray or white eye drop for the image with a simple mouse click.

You can also use the sliders below the gamma curve to change the values. You can use the button with the multi-colored point to adjust the gamma correction automatically.

You can select the color in the channel menu to perform the changes for each color individually.

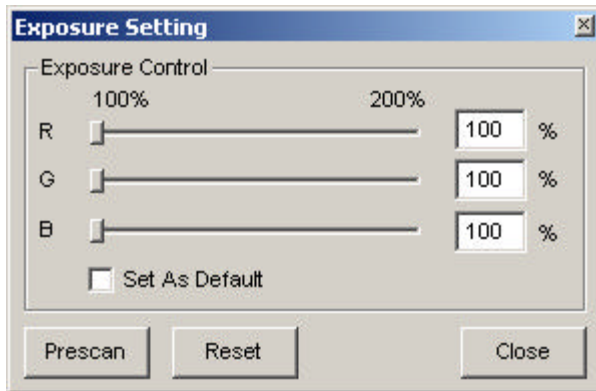


1.1.4 Window

- Exposure Setting...

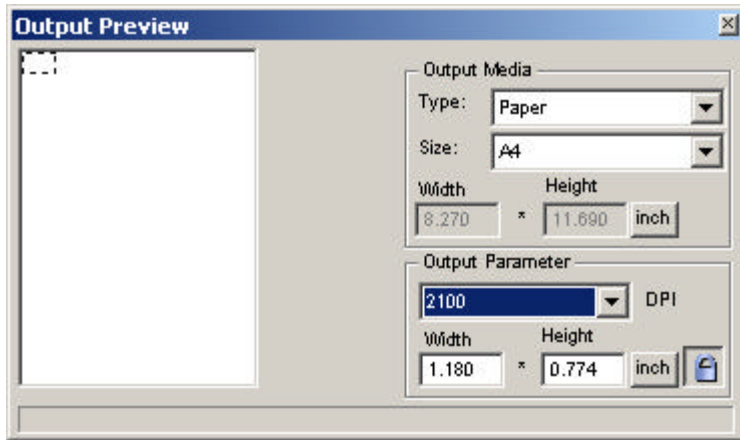
Using the sliders for the different colors, you can correct the exposure already when scanning. If your images to be scanned have a color imbalance you can make corrections already when scanning.

The same applies for dark images – increase the three colors evenly in order to obtain a stronger general exposure without shifting colors during the scanning.



- Output Preview...

By defining the output format via the output medium (type and size) and the output parameters (resolution in DPI and dimensions), you will receive an impression of the designed output.



1.1.5 Help

- User Manual

Opens this manual in CVX.

- Update Firmware

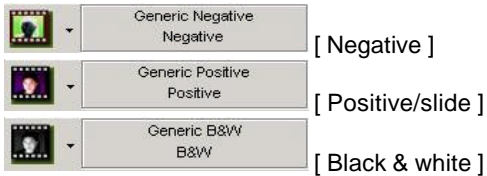
You can upgrade the firmware version; this menu item is necessary to upgrade the firmware installed in the scanner in case of software upgrades. After selecting this menu item, specify the path for the upgrade file. Perform this step only when requested to do so by the support.

- About...

Displays information about the hardware and software of the scan system. Keep this information ready when contacting the telephone support.

1.2 Icon bar

With the icon bar, you can access the features of the menus faster. Menus with sub-menus are identified with the ▼ arrow to the left of the icon. Please refer to the menu bar section of this manual (1.1) for a detailed description.

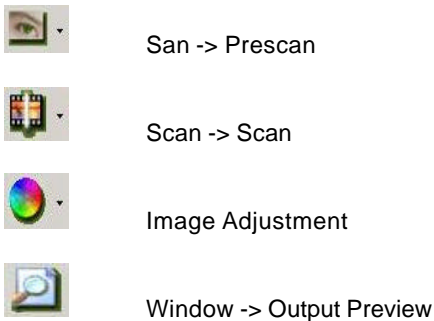


Selecting the film type -

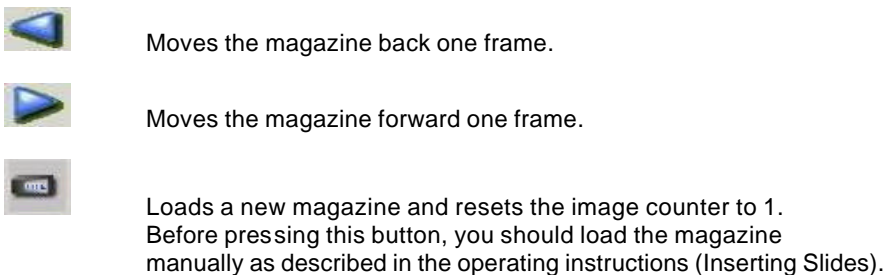
If the film type is not specified explicitly, the best results are achieved with the Generic setting.

Example: With a positive film (slides), select Positive -> Generic -> Generic Positive.

In the following, the icons and the corresponding menus are listed:



The following icons are used to control the scanner:





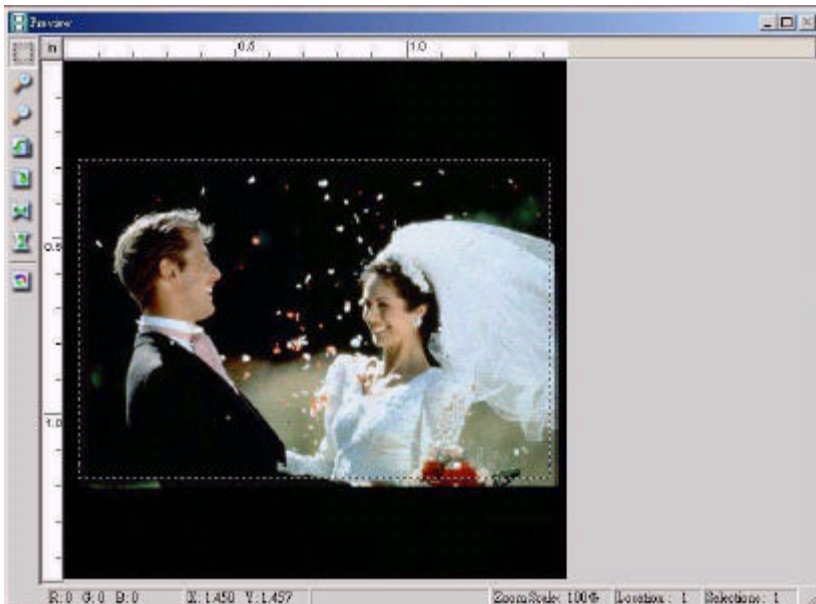
If you move the magazine manually to a new position you can use this menu item to enter the new position so that the counter in the CVX works properly.



You can enter a position which the scanner shall address. Example: You want to scan all slides from position 51-100. Use this button to go to position 51 and select Multi-Scan to File... Enter the number of slides to be scanned.

(There are certainly other ways to solve this task, this is meant as an example.)

2. Preview window



The following settings and information are available in the preview window:



When selecting the scan area, you can select several areas at the same time. Click on this button and draw the respective frames in the preview window of the image. The frame size can be changed afterwards. To delete the current frame, press the Del key. For each frame drawn, a separate file is created during the scan process. The settings for the respective scan can be modified individually in the Active Frame Setting window.

The following buttons have exactly the same functions as the respective menu item in the menu bar (see section 1.1.).



Preview -> Zoom In (maximum value 1000%)



Preview -> Zoom Out



Preview -> Rotate 90 Left



Preview -> Rotate 90 Right



Preview -> Flip Horizontal



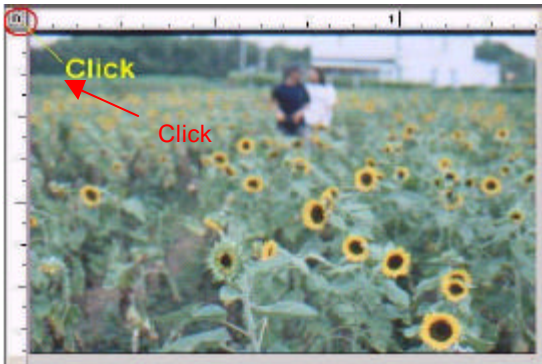
Preview -> Flip Vertical



Scan -> Revert

Selecting the ruler units in the Preview window

You can specify the measurement unit in "in" (inch, US), "cm" (centimeter), or "px" (Pixel) by clicking on the top left corner. The units are transferred to the Active Frame Setting window. Make sure to enter the values in accordance with the selected measurement unit.



Status line (Preview window)

In the bottom left corner, the color levels of red, green, blue, and the coordinates of the respective position are displayed [see I]. In the bottom right corner, the current image, the zoom level, and the number of selected frames [see II] are displayed.

R: 0 G: 0 B: 0 X: 1.443 Y: 1.413 [I]

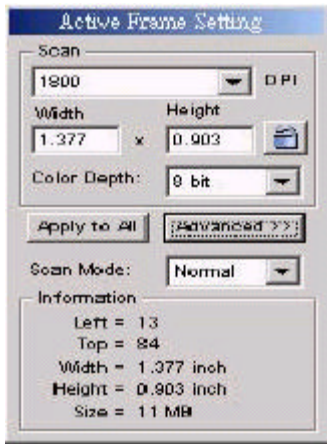
Zoom Scale: 100% Location : 1 Selections : 1 [II]

The status line of the main window shows the settings for the exposure in the bottom right corner.

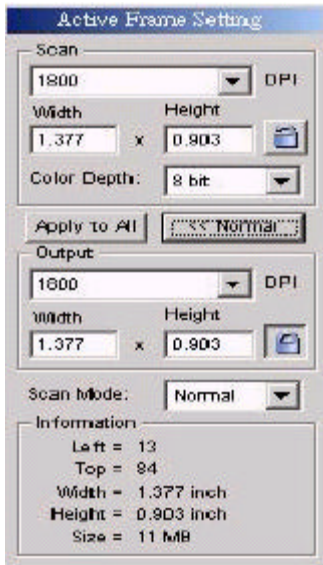
3. Active Frame Setting

You can select the scan resolution, the color depth, and the scan quality of the currently scanned (active) image. You can also set the size of the image. Please note that the unit you selected (in the Preview window) is the basis for the format specifications. You can use the button with the lock for a proportional adjustment of width and height.

The Information area in the bottom part displays different information such as, e.g., the expected file size and the current dimensions of the image.

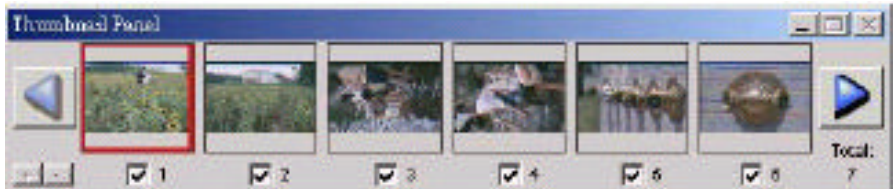


The Advanced mode displays additional information about the planned output. Changes in these two entry areas result in corresponding changes of the other values.



4. Thumbnail Panel

The images from the preview are displayed as thumbnails. By default, all images of the preview are selected (visible from the marked check boxes below the images).



When pre-scanning more than six images, you can use the left/right arrow buttons to scroll through the images.



Use the check boxes to select the images to be scanned. You can use the +/- buttons on the bottom left corner of the window to mark/unmark all images. The active pre-scan image is indicated with a red frame.



5. Support

Visit our home page for support and driver updates.

The Adobe Photoshop Elements and Adobe Photoshop Album products are updated by Adobe. Please contact the following web site if you need support for these products:

www.adobe.de