
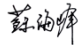
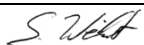


# Pointing Error Engineering Tool

## PEET Software User Manual



<b>Document Number:</b>	ASTOS-PEET-SUM-001		<b>Date:</b>
<b>Issue:</b>	1.7		2013-07-26

	<b>Name/Function</b>	<b>Organization</b>	<b>Signature</b>	
<b>Prepared by:</b>	J. Eggert	Astos Solutions		2013-07-26
	M. Hirth	Astos Solutions		2013-07-26
	H. Su	iFR		2013-07-26
	T. Ott	iFR		2013-07-26
<b>Checked by:</b>	S. Weikert	Astos Solutions		2013-07-26
<b>Product Assurance:</b>	A. Wiegand	Astos Solutions		2013-07-26
<b>Project Management:</b>	S. Weikert	Astos Solutions		2013-07-26

## Document Change Record

Issue	Date	Affected Chapter/Section/Page	Reason for Change Brief Description of Change
Draft	2012-10-15	All	Draft issue
1.1	2012-10-16	7, 10	Added chapters
1.2	2012-10-18	10	Added references to the PointingSat example
1.3	2012-10-30	2.1, 7, 8, 9, 10.1.1	Customer Review
1.4	2012-11-23	All	Customer Review
1.5	2012-12-19	1.2, 3	Added references, added paragraph
1.6	2013-07-08	7, 9	Added PEC (position) and reaction wheel models
1.7	2013-07-26	7	PEC (position) updated

## Table of Contents

1	Applicable and Reference Documents.....	6
1.1	Applicable Documents .....	6
1.2	Reference Documents .....	6
2	Terms, Definitions and Abbreviated Terms .....	7
2.1	Acronyms .....	7
2.2	Definitions .....	7
3	Introduction.....	8
4	Prerequisites .....	9
5	Installing and running PEET .....	10
5.1	Installation .....	10
5.2	Running PEET .....	10
6	Graphical User Interface.....	11
6.1	The System View .....	11
6.2	The Tree View.....	13
6.3	The Database Browser .....	14
7	Block Types.....	15
7.1	Coordinate Transformation Block .....	15
7.1.1	Block Parameters .....	15
7.2	Dynamic System Block .....	15
7.2.1	Block Parameters .....	15
7.3	Feedback System Block .....	17
7.3.1	Block Parameters .....	17
7.4	Flexible Plant Block.....	19
7.4.1	Block Parameters .....	19
7.5	Gyro Rate Noise Block.....	19
7.5.1	Block Parameters .....	20
7.6	Gyro-Stellar Estimator Block.....	20
7.6.1	Block Parameters .....	21
7.6.2	Block inputs and outputs .....	21
7.7	Mapping Block .....	21
7.7.1	Block Parameters .....	22

7.8	PEC Blocks .....	22
7.8.1	PEC (Pointing) .....	22
7.8.2	PEC (Position) .....	22
7.9	PES Block .....	24
7.9.1	Time Constant Block Parameters .....	24
7.9.2	Time Random Block Parameters.....	27
7.10	Reaction Wheel Model.....	31
7.10.1	Reaction Wheel (Force).....	31
7.10.2	Reaction Wheel (Torque) .....	35
7.11	Rigid Plant.....	37
7.11.1	Block Parameters .....	38
7.12	PID Controller .....	38
7.12.1	Block Parameters .....	38
7.13	Static System Block .....	39
7.13.1	Block Parameters .....	39
7.14	Summation Block .....	39
7.15	Star Tracker Noise Block .....	39
7.15.1	Block Parameters .....	40
8	Building Pointing Systems Using PEET .....	42
8.1	Global settings .....	43
8.2	Configuring blocks .....	43
8.2.1	Linking to external data .....	43
8.2.2	Sensitivity analysis.....	45
8.3	Container blocks .....	46
9	Computing Pointing Errors Using PEET .....	47
9.1	Pointing budget reports.....	49
10	PointingSat Example .....	50
10.1	Building the pointing system .....	50
10.1.1	Connecting blocks .....	54
10.1.2	Defining correlations between error sources.....	56
10.2	Computing pointing errors.....	56
10.2.1	Creating error indices .....	56
10.2.2	Perform error computation.....	58

10.2.3	Analyse pointing errors .....	59
--------	-------------------------------	----

## 1 Applicable and Reference Documents

### 1.1 Applicable Documents

- [AD1] ECSS-E-ST-60-10C; Control Performance Standard ECSS-E-ST-60-10C, ESA-ESTEC Requirements & Standards Division, 2008.
- [AD2] ESSB-HB-E-003; ESA Pointing Error Engineering Handbook, Issue 1, 19 July 2011

### 1.2 Reference Documents

- [RD1] ASTOS-PEET-TN-001\_Iss1.0; PointingSat Definition
- [RD2] IEEE-STD 952-1997 (R2003); IEEE Standard Specification Format Guide and Test Procedure for Single-Axis Interferometric Fiber Optic Gyros
- [RD3] Ott T., Benoit A., Van den Braembussche P., Fichter W., "ESA Pointing Error Engineering Handbook", 8th International ESA Conference on Guidance, Navigation & Control Systems, Karlovy Vary CZ, June 2011.
- [RD4] Ott T., Fichter W., Bennani S., Winkler S., "Precision Pointing  $H^\infty$ -Control Design for Absolute-, Windowed-, and Stability-Time Errors", manuscript submitted to CEAS Space Journal.
- [RD5] Hirth M., Brandt N., Fichter W., "Inertial Sensing for Future Gravity Missions", GEOTECHNOLOGIEN Science Report No.17, Observation of the System Earth from Space, Bonn, 2010, ISSN: 1619-7399.
- [RD6] Hirth M., Fichter W., et al., "Optical Metrology Alignment and Impact on the Measurement Performance of the LISA Technology Package", Journal of Physics Conference Series, 7th International LISA Symposium, Barcelona, Spain, 2008.
- [RD7] NPD/5022/TD/TR/001 v1.r1.m0; "Error Budgets for Formation Flying Missions", Harwood A. March 2008
- [RD8] PFF-MEMO-MC-001; "Reaction Wheel Microvibration Model", Memo, Casasco M., April 2013.
- [RD9] Masterson R.A., "Development and Validation of Empirical and Analytical Reaction Wheel Disturbance Models", Master Thesis, Massachusetts Institute of Technology, June 1999.P3-EST-TN-7001;
- [RD10] Masterson R.A., Miller D.W., Grogan R.L. "Development of Empirical and Analytical Reaction Wheel Disturbance Models", AIAA 99-1204, AIAA Structural Dynamics and Materials Conference, St. Louis, USA, 1999.

## 2 Terms, Definitions and Abbreviated Terms

### 2.1 Acronyms

The following abbreviations are used throughout this document.

Acronyms	
<b>PEET</b>	Pointing error engineering tool
<b>CDF</b>	ESA/ESTEC Concurrent Design Facility
<b>GUI</b>	Graphical user interface
<b>PEC</b>	Pointing/Performance error contributor
<b>PES</b>	Pointing error source
<b>PSD</b>	Power spectral density
<b>CRV</b>	Constant random variable
<b>RV</b>	Random variable
<b>RP</b>	Random process

### 2.2 Definitions

The following definitions are used throughout this document.

Definitions	
<b>Signal</b>	The information about the pointing error which will be exchanged between adjacent blocks.
<b>Block mask</b>	The input dialog provided by the blocks for parameter input.

### 3 Introduction

The ECSS Control Performance Standard E-ST-60-10C [AD1], published in November 2008, provides solid and exact mathematical elements to build up a performance error budget. However, an additional document that provides guidelines and summation rules based on the top level clauses gathered in this ECSS-E-ST-60-10C standard was considered necessary by ESA to provide ESA projects with a clear pointing error engineering methodology. This methodology is the basis for a step-by-step process with guidelines, recommendations and examples consistent with and complementing the ECSS standard. The answer to this necessity is the ESA Pointing Error Engineering (PEE) Handbook [AD2] that was published in 2011 as ESA applicable document with the reference ESSB-HB-E-003.

According to the methodology defined in the Control Performance Standard [AD1] and in the Pointing Error Engineering Handbook [AD2], a software tool called PEET (**P**ointing **E**rror **E**ngineering **T**ool) was developed to support system engineers and control engineers working in CDF and in Phase A studies in performing preliminary pointing error engineering tasks.

PEET was designed as an extension to MATLAB. It uses the computational power provided by MATLAB and provides the user a graphical user interface suitable for building pointing systems and analysing pointing errors. The graphical user interface is implemented in Java. The core of the PEET software, containing the mathematical algorithms for error computation, is implemented using MATLAB classes. PEET runs completely inside the MATLAB environment.

The MATLAB classes are based on the iFR Precision Analysis and Control Toolbox in MATLAB. This toolbox provides algorithms in MATLAB for the research results published in [RD3] - [RD6], but also to not yet published results. In order to integrate the toolbox in the PEET framework, it has been extended and adapted by the subcontractor iFR.

This software user manual explains how pointing systems can be build up in PEET and how pointing error computations can be performed. Chapter 6 will introduce the reader to the graphical user interface in general and to the various window types, the user is faced with while building up pointing systems and analysing pointing errors. How to build up pointing systems is explained in detail in chapter 8 while chapter 9 gives a detailed explanation about performing and analysing error computations.



## 4 Prerequisites

The following items are mandatory to install PEET.

- Standard Desktop PC
- Windows XP or higher
- MATLAB 2011b or higher
- MATLAB Control System Toolbox

## 5 Installing and running PEET

### 5.1 Installation

PEET can be installed to any location by simply placing the PEET folder at the desired location. The PEET folder must be writeable for all users. PEET is completely running inside the MATLAB environment. As already mentioned in the introduction, the graphical user interface is written in Java. All the java classes required by PEET are stored in the following jar files.

- peet.jar, graphical user interface of PEET
- jxl.jar, Java classes used for import and export of Excel data.
- piccolo2d-core-1.3.1.jar, graphical framework used by the GUI.
- piccolo2d-extras-1.3.1.jar, graphical framework used by the GUI.

In order that MATLAB can find the Java classes, the absolute paths to all the jar files must be added to the static class path of MATLAB. This is done by adding the absolute paths to the classpath.txt file located in the toolbox\local folder of your MATLAB installation. If this file cannot be edited or should be kept in its original state, it is also possible to create a local classpath.txt file for each user. Simply copy the content of the original classpath.txt file to a new classpath.txt file located in the Documents\MATLAB folder (or My Documents\MATLAB on Windows platforms other than Windows Vista). This local classpath.txt file will be used at start-up. The required jar files can now be added to the new classpath.txt file.

### 5.2 Running PEET

PEET is started by entering `int_esa.peet.gui.Peet.main({'installation_path'})` on the MATLAB command line. For *installation\_path*, use the absolute path to the PEET folder. Figure 5-1 shows an example assuming that the PEET folder was placed in `c:\Program Files`.

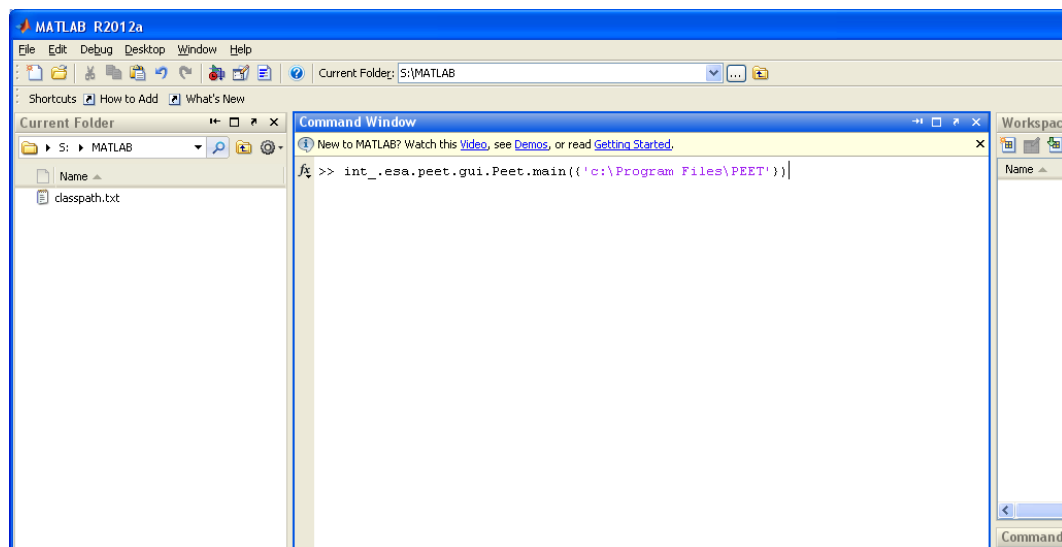


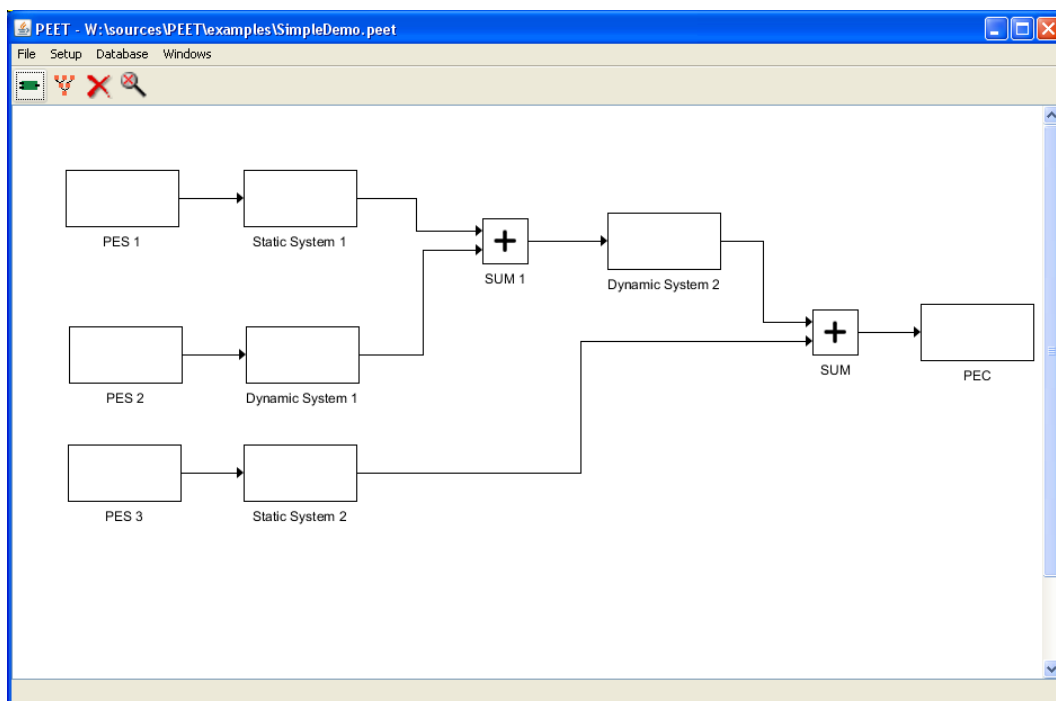
Figure 5-1: Running PEET from the MATLAB command line

## 6 Graphical User Interface

This chapter will provide the user an introduction to the graphical user interface and to the various window types he will face while building up pointing systems and analysing pointing errors.

### 6.1 The System View

The system view is the main window of PEET. It will be the first window after PEET has been started. It is mainly used to build up the pointing system in a way similar to Simulink. A detailed description on how a pointing system can be build is given in chapter 8.



**Figure 6-1: The System View window**

Figure 6-1 shows the system view window. This window contains a menu bar, a tool bar and the system view, covering most of the window.

The file menu contains all actions related to file handling e.g. opening an existing pointing system, creating an empty pointing system or saving the current pointing system. It also contains the menu entry used to create the reports for the currently loaded pointing system.

The setup menu contains all menu entries used for configuring the current pointing system. Using the setup menu, the user can define the correlations between the pointing error sources, define the error indices he is interested in and define the global parameters applicable for the pointing system.

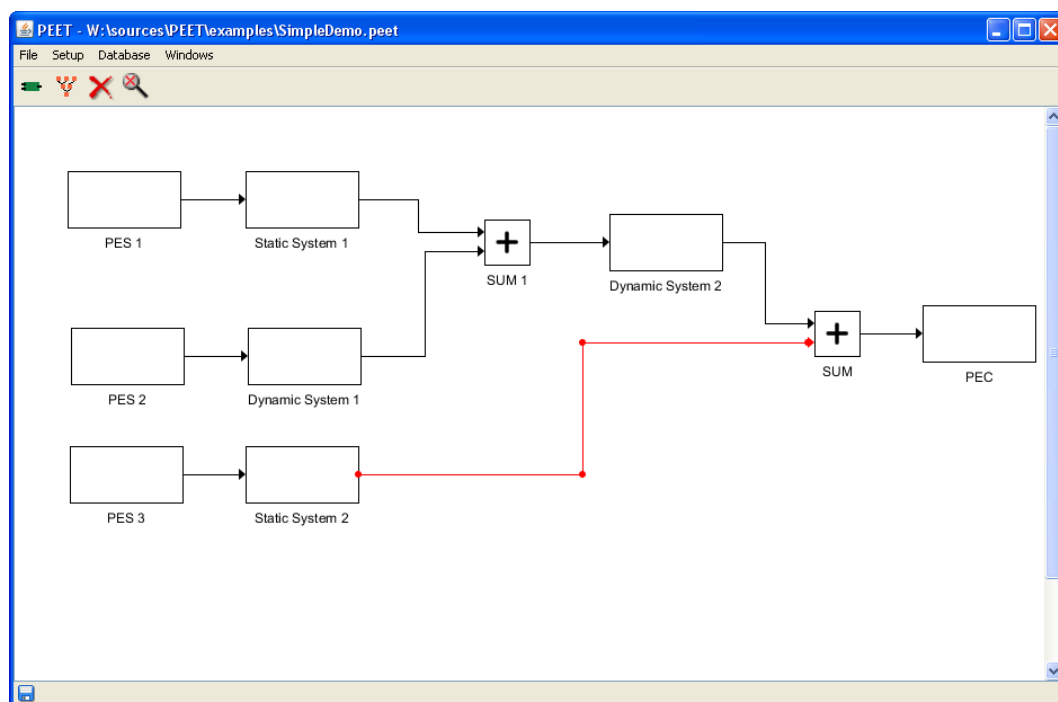
The Database menu contains all actions related to the block database. It provides the user the possibility to open the database browser and to manage user defined block types.

Finally the Windows menu gives the user access to all window types and to actions related to the system view e.g. fit the current system view in order to show the whole pointing system.

The tool bar contains some short cuts to menu entries. Starting on the left, the user can open the database browser, open the tree view, delete the selected element or fit the system view to show the whole pointing system.

The main part of the system view window shows the currently loaded pointing system. Each pointing system consists of a number of blocks and connection between the blocks. The location of the blocks can be changed by selecting a block and dragging it to the desired location. It is also possible to zoom the system view by pressing the right mouse button and moving the mouse to the left (zoom out) or right (zoom in).

For editing a connection between blocks, the user has some possibilities. Figure 6-2 shows a selected connection which now can be edited by the user.

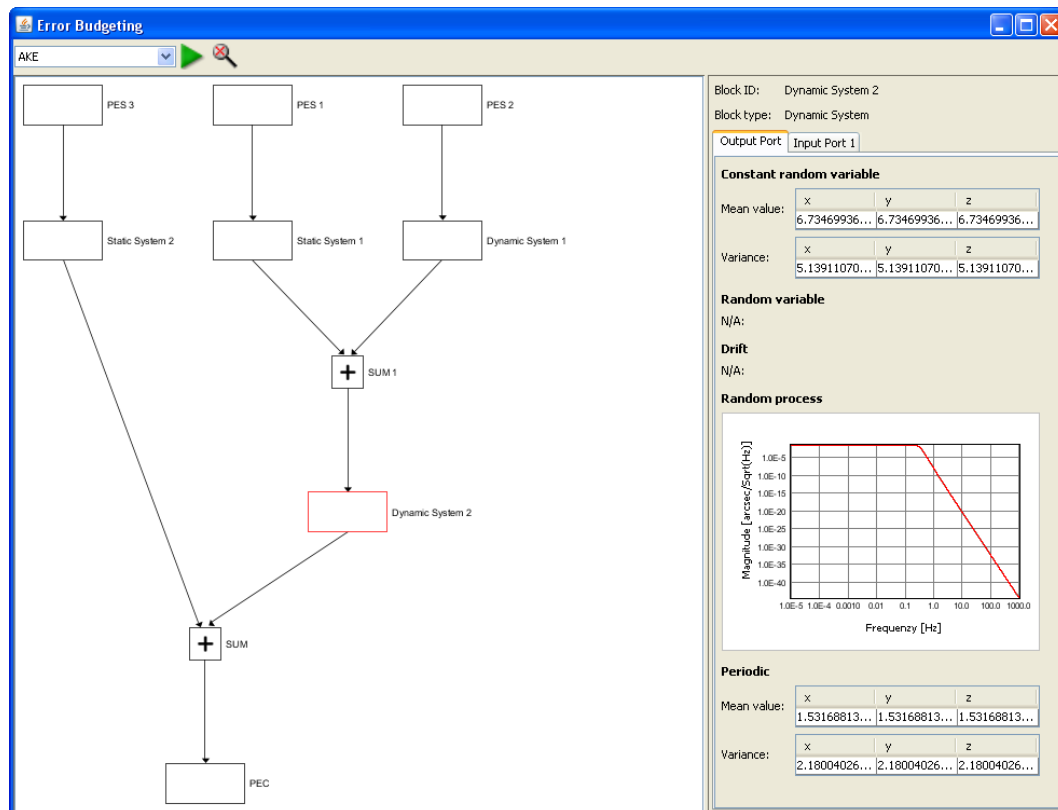


**Figure 6-2: Editing connections**

To edit the location of the connection, the user has to click on one of the red spots of the line. Afterwards the spot can be moved to the desired location. In this way, connections are completely adjustable by the user.

## 6.2 The Tree View

The tree view window can be used to analyse pointing errors. Figure 6-3 gives an example of the tree view window.



**Figure 6-3: The Tree View window**

The tree view window consists of a tool bar, a tree-like representation of the pointing system and an information section.

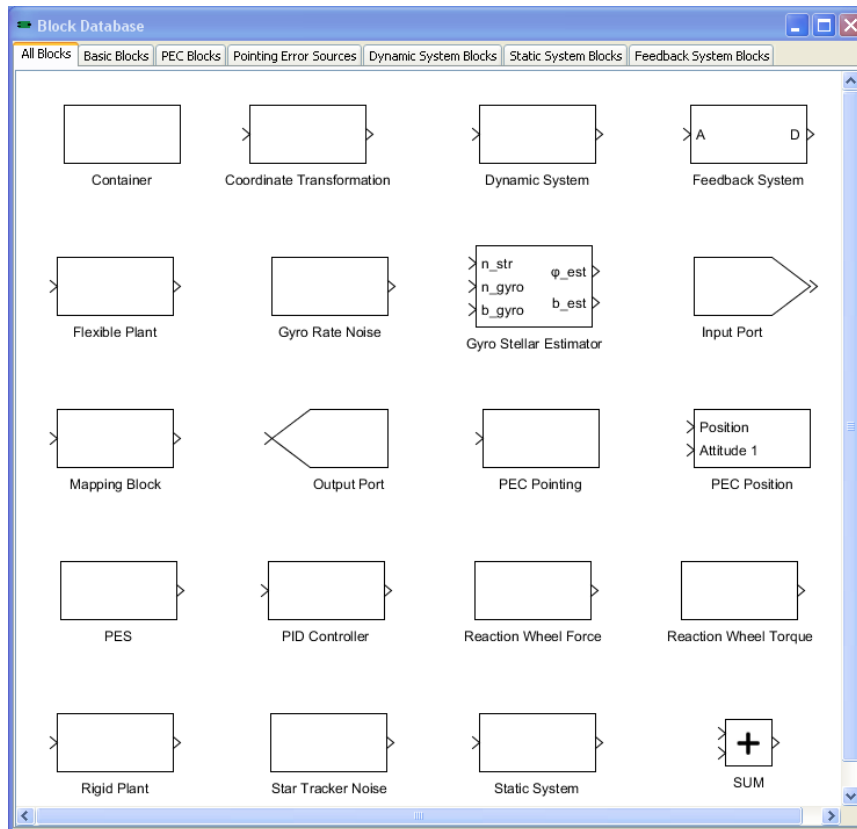
Using the drop down menu in the tool bar, the user can select the error index he wants to analyse. The information shown in the information section on the right of the window shows the current signal data for the selected error index and the selected block. To select a block, the user simply clicks on the block of interest. If no block is selected, no data is available in the information section. A detailed description of the information section is provided in chapter 9.

The user can switch between the data of input and output ports of a block by selecting the associated tab in the information panel. There will be always on output port tab. The number of input port tabs is related to the number of input ports of the currently selected block.

Compared to the system view window, the blocks and connections cannot be moved inside the tree view window. The tree view window automatically organizes all blocks and connections in a tree-like structure starting with the error sources on the upper most level and ending with the PEC block on the lowest level.

## 6.3 The Database Browser

The database browser provides access to the block database. It organizes all available block types in categories. For each block category, a tab is shown in the database browser.



**Figure 6-4: Database Browser**

The first tab contains all block types used by PEET. All other tabs represent a category containing a subset of the block types available on the first tab. To add blocks from the database to the pointing system, the desired block must be dragged from the database browser to the system view window. A detailed description on how a pointing system will be created is given in chapter 8.

## 7 Block Types

This chapter explains the various block types and their required parameters. For each block type, the meaning of the block parameters will be explained in detail.

If not otherwise stated in the software user manual or in the block masks, all parameters must be provided in SI units (e.g. angles must be defined in radian). It is up to the user to ensure that the numbers are consistent across the pointing system. If a block mask forces the user to provide parameters in Non-SI units, these parameters will be converted to SI units internally.

### 7.1 Coordinate Transformation Block

The coordinate transformation block is used to transform signal data from one coordinate system to another coordinate system. The coordinate system transformation is defined by an Euler transformation using three angles and a rotation sequence. The resulting matrix is used as static system gain to transfer the input signal.

#### 7.1.1 Block Parameters

The coordinate transformation parameters offered by the block mask are listed in the following table.

Block mask parameters		
Rotation sequence	Selection	The rotation sequence used for the Euler transformation. Possible values are 1-2-3, 1-3-2, 2-1-3, 2-3-1, 3-1-2, 3-2-1, 1-2-1, 1-3-1, 2-1-2, 2-3-2, 3-1-3 and 3-2-3.
Phi	Double	The angle describing the rotation around the first axis of the rotation sequence.
Theta	Double	The angle describing the rotation around the second axis of the rotation sequence.
Psi	Double	The angle describing the rotation around the third axis of the rotation sequence.

### 7.2 Dynamic System Block

The dynamic system block is used to model any kind of dynamic systems. In general, the system transfer is described by a 3x3 matrix. The elements of the system transfer matrix can be transfer functions, frequency-response models or zero-pole-gain models. Alternatively a state space model can be provided which defines the dynamic system. Internally all inputs are transformed to a state space model which will be used for the system transfer.

#### 7.2.1 Block Parameters

Depending on the matrix element type, different parameters are provided by the block mask as described in the next subchapters. The two parameters which are always available independent of the matrix element type are listed in the next table.

Block mask parameters		
Representation	Selection	The type of the matrix elements. Possible values are Transfer function, Frequency-Response, Zero-Pole-Gain and State space.
Matrix element	Selection	A drop down menu providing the user the possibility to choose the element of the system transfer matrix for editing. This parameter is only used by the block mask and has no effect on the error calculations. In general, always the whole 3x3 transfer matrix will be used for the system transfer. Possible values are x-x, x-y, x-z, y-x, y-y, y-z, z-x, z-y and z-z. Only available if the representation is not set to State space. In this case the state-space model defines the entire 3x3 system.

### 7.2.1.1 Transfer Function Parameters

A transfer function is described by the coefficients for its numerator and its denominator. The parameters provided by the block mask are listed below.

Block mask parameters		
Numerator	List	A list of coefficients defining the numerator of the transfer function. Each coefficient is of type double.
Denominator	List	A list of coefficients defining the denominator of the transfer function. Each coefficient is of type double.

### 7.2.1.2 Zero-Pole-Gain Parameters

The zero-pole-gain model is described by a list of coefficients describing the zeros of the transfer function, a list of coefficients describing the poles of the transfer function and a gain value. The block mask provides the following parameters.

Block mask parameters		
Zeros	List	A list of coefficients defining the zeros of the transfer function. Each coefficient is of type double.
Poles	List	A list of coefficients defining the poles of the transfer function. Each coefficient is of type double.
Gain	Double	A single double value describing the gain of the transfer function.

### 7.2.1.3 State Space Parameters

The state space model is described by the number of state variables (n) and by four matrices A, B, C and D.

Block mask parameters		
State variables	Selection	The number of state variables. Possible values are in the range from 1 to 99.
A	nxn Matrix	The state matrix of the state space model. Each matrix element is a scalar value of type double.



B	Nx3 Matrix	The input matrix of the state space model. Each matrix element is a scalar value of type double.
C	3xn Matrix	The output matrix of the state space model. Each matrix element is a scalar value of type double.
D	3x3 Matrix	The feedthrough matrix of the state space model. Each matrix element is a scalar value of type double.

## 7.3 Feedback System Block

Feedback systems are the only block type which allows the user to integrate loops into the pointing system. The fixed structure of the feedback system implemented by this block type is shown in Figure 7-1.

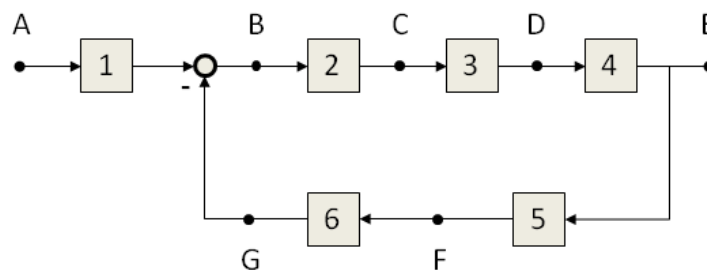


Figure 7-1: Feedback system structure

Each of the blocks labelled 1 to 6 can either be turned on or off. If turned on, the user has to specify the block type and the block parameters. The available block types are a subset of the blocks available in the database and are explained in chapter 7.3.1. By turning internal blocks on and off, the user can build up any kind of feedback system structure required for the pointing error calculations of PEET.

The nodes labelled A to G serves as input or output ports. It is possible to define more than one input port. The number of output ports is restricted to one. In addition to this restriction, it is not possible to use one of the nodes as input and output port.

All block parameters are converted internally to state space models. Using this state space models, an equivalent dynamic system is build up which will be used for the system transfer.

### 7.3.1 Block Parameters

The parameters for the feedback system can be divided into two groups. The first set of parameters deals with the definition of the input and output ports. These parameters are listed in the next table.

Block mask parameters		
Input ports	Selection	The user can choose one or more input ports. Possible values are A, B, C, D, E, F and G. The node which is currently set as output port cannot be selected as input port.

Output port	Selection	The user can select the output port. Only one node can be set as output port. Possible values are A, B, C, D, E, F and G. If the user selects a node which is currently used as input port, this port is removed from the list of input ports and set as the one and only output port.
-------------	-----------	--

The second set of parameters deals with the parameter settings for the blocks. Each of the blocks provides the same parameters which are listed below. In general any system transfer block from the database can be selected with the only restriction of one single 3D input and one single 3D output.

Block mask parameters		
Block type	Selection	The type of the block. Possible values are Unused, Coordinate Transformation, Dynamic System, Flexible Plant, Rigid Plant, Static System and PID Controller.

Using the block type `Unused` turns off the block. By turning off a block, the signal can pass this block without any modifications to it. If a block type different than `Unused` is selected, additional parameters are available. These parameters are described in the next chapters.

### 7.3.1.1 Internal Block Type: Coordinate Transformation

The parameters for the coordinate transformation type are the same as for the Coordinate Transformation block. These parameters are explained in detail in chapter 7.1.

### 7.3.1.2 Internal Block Type: Dynamic System

The parameters for the dynamic system type are the same as for the Dynamic System block. These parameters are explained in detail in chapter 7.2.

### 7.3.1.3 Internal Block Type: Flexible Plant

The parameters for the flexible plant type are the same as for the Flexible Plant block. These parameters are explained in detail in chapter 7.4.

### 7.3.1.4 Internal Block Type: Rigid Plant

The parameters for the rigid plant type are the same as for the Rigid Plant block. These parameters are explained in detail in chapter 7.11.

### 7.3.1.5 Internal Block Type: Static System

The parameters for the static system type are the same as for the Static System block. These parameters are explained in detail in chapter 7.13.

### 7.3.1.6 Internal Block Type: PID Controller

The parameters for the PID controller system type are the same as for the PID Controller block. These parameters are explained in detail in chapter 7.12.

## 7.4 Flexible Plant Block

This block implements flexible satellite dynamics. It takes multiple (n) flexible modes defined by the user with their corresponding parameters and the inertia tensor of the plant. Afterwards it constructs an n-termed dynamic system, transfers the input signal through each term of the dynamic system (each flexible mode), and sums up the transferred signals as the final response of this block type. The underlying model is given by the following set of equations:

$$\Theta \dot{\omega} - \delta \ddot{\alpha} = \mathbf{N} \quad \text{Eq 7-1}$$

$$\ddot{\alpha} + 2\zeta\Omega\dot{\alpha} + \Omega^2\alpha = \delta^T \dot{\Omega} \quad \text{Eq 7-2}$$

with:

- $\Theta$  spacecraft inertia matrix (3x3)
- $\omega$  vector of spacecraft angular rates (3x1)
- $\delta$  matrix of coupling coefficients describing the coupling of flexible modes into the spacecraft body rotation (3xn)
- $\mathbf{N}$  vector of torques acting on the spacecraft body (3x1)
- $\alpha$  vector containing the amplitudes of n flexible modes (nx1)
- $\zeta$  diagonal matrix containing the damping ratio of the flexible modes (nxn)
- $\Omega$  diagonal matrix containing the cantilever frequencies of the flexible modes (nxn)

Note that this model ignores the coupling between the flexure and the spacecraft linear acceleration/force

### 7.4.1 Block Parameters

The block mask parameters for the flexible block are listed in the next table.

Block mask parameters		
Mode	Integer	The number of flexible modes.
Inertia	Matrix	A 3x3 matrix containing the inertia tensor.
Coupling coefficients	Matrix	A 3xn matrix containing the coupling coefficients for each axis and for each mode.
Cantilever frequency	Matrix	An nx1 vector containing the diagonal elements of the cantilever frequency matrix for the n modes of the flexible plant.
Damping ratio	Matrix	An nx1 vector containing the diagonal elements of damping ratio matrix for the n modes of the flexible plant.

## 7.5 Gyro Rate Noise Block

This block implements a special kind of pointing error source which combines typical gyro rate noise contributors in one source. The resulting noise shape is fitted to a transfer function with user-specified parameters and mapped to all axes (x,y and z) assuming no correlation between the axes.

## 7.5.1 Block Parameters

The GUI parameters for the gyro rate noise block are shown in the table below.

Block mask parameters		
Min. pole order	Double	Minimum pole order for rational fit of PSD
Max. pole order	Double	Maximum pole order for rational fit of PSD
Number of frequency points	Double	Frequency point used for rational fitting
Angle random walk (N)	Double	The magnitude of the angle random walk [ $^{\circ}/\sqrt{h}$ ].
Rate random walk (K)	Double	The magnitude of the angle random walk [ $^{\circ}/h^{3/2}$ ].
Bias instability (B)	Double	The magnitude of the bias instability [ $^{\circ}/h$ ].
Quantization noise (Q)	Double	The magnitude of the quantization noise [arcsec].
Time window (T)	Double	The time window [s].

Using the parameters defined, the Gyro Rate Noise block realizes a PSD type error source with a spectral behaviour as shown in Figure 7-2. For further information about the involved parameters see appendix B of [RD2].

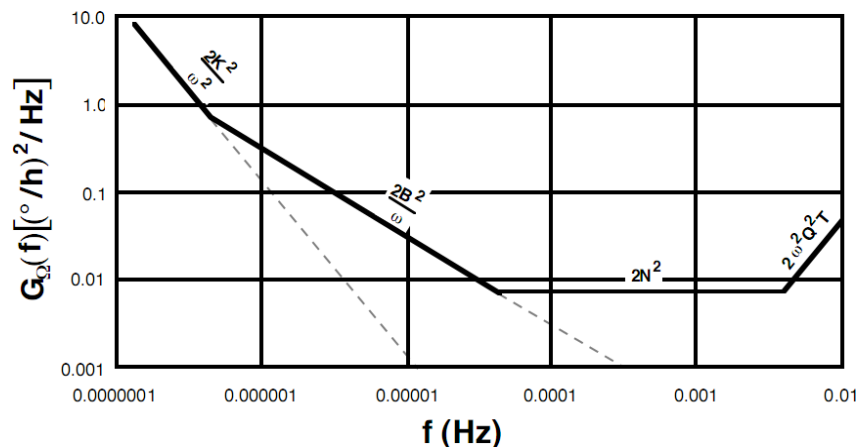


Figure 7-2: Gyro noise PSD derived from typical specifications [RD2] .

## 7.6 Gyro-Stellar Estimator Block

This block implements the gyro-stellar estimator in PEET. It is the only block type which has more than one output port. The parameters required by this block type are the two Kalman gains  $K_p$  and  $K_d$ . In general, the Kalman estimator is realized as a dynamic system, which takes 3 inputs and 2 outputs. It computes the signal transfer according to the fixed Kalman estimator structure using user input gains from the model given below individually for each axis:

$$\begin{bmatrix} \tilde{\varphi} \\ \tilde{\mathbf{B}} \end{bmatrix} = \frac{1}{s^2 + \mathbf{K}_p s + \mathbf{K}_2} \begin{bmatrix} (\mathbf{K}_p s + \mathbf{K}_d) \mathbf{n}_{Str} + s \mathbf{n}_{gyro} + \mathbf{B}_{gyro} \\ -\mathbf{K}_d s \mathbf{n}_{Str} + \mathbf{K}_d \mathbf{n}_{gyro} - (s + \mathbf{K}_p) \mathbf{B}_{gyro} \end{bmatrix} \quad \text{Eq 7-3}$$

## 7.6.1 Block Parameters

The GUI parameters for the gyro-stellar estimator block are listed in the next table.

Block mask parameters		
Kalman gain Kp	Vector	A three dimensional vector containing the Kalman gains Kp for the x,y and z axis. The elements of the vector are of type double.
Kalman gain Kd	Vector	A three dimensional vector containing the Kalman gains Kd for the x,y and z axis. The elements of the vector are of type double.

## 7.6.2 Block inputs and outputs

The gyro-stellar estimator block offers the user three input and two output ports. All of these ports are optional and can be left unconnected. An explanation of these ports is provided by the tables below.

Input ports	
n_str	The star-tracker measurement noise.
n_gyro	The gyro rate measurement noise.
b_gyro	The gyro drift bias noise ('Rate random walk').

Output ports	
φ_est	The attitude estimation error.
B_est	The gyro bias estimation error

Note the gyro noise contributions can be realized in different ways: Either as individual signals using both n\_gyro and b\_gyro or by combining the gyro drift bias and rate noise to a total noise using the Gyro Rate Noise block presented in section 7.5 only and feeding it to the n\_gyro input only (see also definition of PES 7 in the PointingSat example for further details).

## 7.7 Mapping Block

The Mapping block is used to map a 1D signal to a spatially distributed 3D signal, i.e. mapping thruster noise from the axis of each thruster to the reference frame of the pointing error. The user input consists of the number of devices (n) that are mapped by this block and the nx3 mapping matrix. The mapping block extends the 1D signal to an nxn signal, and transfers the nxn signal through the nx3 mapping matrix, which serves as a static system. Finally it produces a three dimensional signal.

## 7.7.1 Block Parameters

The next table explains the block mask parameters for the Mapping block.

Block mask parameters		
Number of devices	Selection	The number of devices which will be mapped by this block. Possible values are in the range from 1 to 99.
Mapping matrix	Matrix	The nx3 mapping matrix with as many rows as devices are defined. The columns contain the mappings for the x, y and z axis.

## 7.8 PEC Blocks

The pointing error contributor block represents the "endpoint" of each PEET system model at which the resulting total error contribution shall be evaluated. The evaluation is realized according to AST-4 of [AD2] and the results are grouped into time-constant, time-random and total error contribution. The usage of a PEC block is mandatory for each PEET system and only one PEC block can be used in a system. Two kinds of blocks are available in the block database:

### 7.8.1 PEC (Pointing)

The PEC (Pointing) block is the standard block for the overall error evaluation. It has no parameters and only one single input which corresponds to the total error signal of the system under consideration. The content of the different parts of the input signal (CRV, RV, drift, periodic signal and random process part) is summed according to AST-4 of [AD2] after the equivalent variance of a potential random process signal is computed within the user-defined global evaluation bandwidth.

The overall error is computed per axis (x,y,z) and with respect to the user defined LOS axis. Note that the latter is the only special feature that links the block really to pointing. Disregarding the LOS error, this block (and PEET) could be used to compute any kind of 3-axis budget (i.e. PEET could generally be understood as "Performance Error Engineering Tool" rather than a "Pointing Error Engineering Tool" only).

### 7.8.2 PEC (Position)

The PEC (Position) realizes a special case for the overall error evaluation. It allows the computation of a position/displacement error budget which is the result of "pure" 3-axis position errors and 3-axis attitude errors which couple into equivalent position errors due to dedicated "lever arms" (e.g. as it is the case for formation flying missions such as PROBA 3). The implemented model is based on Eq.5 in [RD7]:

$$\begin{aligned}
 \mu_{\text{tot},x} &= \mu_{\text{pos},x} - \sum_{i=1}^{N_{\text{att}}} (y_i \mu_{\text{att},z,i} - z_i \mu_{\text{att},y,i}) & \sigma_{\text{tot},x}^2 &= \sigma_{\text{pos},x}^2 + \sum_{i=1}^{N_{\text{att}}} (y_i^2 \sigma_{\text{att},z,i}^2 + z_i^2 \sigma_{\text{att},y,i}^2) \\
 \mu_{\text{tot},y} &= \mu_{\text{pos},y} - \sum_{i=1}^{N_{\text{att}}} (z_i \mu_{\text{att},z,i} - x_i \mu_{\text{att},z,i}) & \sigma_{\text{tot},y}^2 &= \sigma_{\text{pos},y}^2 + \sum_{i=1}^{N_{\text{att}}} (z_i^2 \sigma_{\text{att},x,i}^2 + x_i^2 \sigma_{\text{att},z,i}^2) \\
 \mu_{\text{tot},z} &= \mu_{\text{pos},z} - \sum_{i=1}^{N_{\text{att}}} (x_i \mu_{\text{att},z,i} - y_i \mu_{\text{att},x,i}) & \sigma_{\text{tot},z}^2 &= \sigma_{\text{pos},z}^2 + \sum_{i=1}^{N_{\text{att}}} (x_i^2 \sigma_{\text{att},y,i}^2 + y_i^2 \sigma_{\text{att},x,i}^2)
 \end{aligned} \tag{Eq 7-4}$$

with (axis index omitted):

- $\mu_{tot}$  total mean of resulting displacement error
- $\sigma_{tot}$  total standard deviation of resulting displacement error
- $\mu_{pos}$  overall mean of "pure" position error contributors
- $\sigma_{pos}$  overall standard deviation of "pure" position error contributors
- $N_{att}$  number of attitude error coupling to position
- $\mu_{att,i}$  mean of i-th attitude error
- $\sigma_{att,i}$  standard deviation of i-th attitude error
- $x_i, y_i, z_i$  components of coupling vector of i-th attitude error

Different to Eq. 5 in [RD7] there is no summation over different position error contributors. The summation of these contributors has to be realized using standard Sum blocks in the PEET system (this allows the usage of one single position error input for the PEC (Position) block).

Above realization corresponds to the option `Exact` in the block's *Summation rule* dropdown menu. In case the directions ('sign relations') of individual contributors are not exactly known a priori, PEET alternatively offers of a more conservative approach using the `Worst case` option. Here, the total mean is computed using absolute values according to the following equation:

$$\begin{aligned}
 \mu_{tot,x} &= \left| \mu_{pos,x} \right| + \left| \sum_{i=1}^{N_{att}} (y_i \mu_{att,z,i} - z_i \mu_{att,y,i}) \right| \\
 \mu_{tot,y} &= \left| \mu_{pos,y} \right| + \left| \sum_{i=1}^{N_{att}} (z_i \mu_{att,z,i} - x_i \mu_{att,z,i}) \right| \\
 \mu_{tot,z} &= \left| \mu_{pos,z} \right| + \left| \sum_{i=1}^{N_{att}} (x_i \mu_{att,z,i} - y_i \mu_{att,x,i}) \right|
 \end{aligned}
 \tag{Eq 7-5}$$

The number of additional block inputs for attitude errors depends on the settings of the parameters which are listed in the table below:

Block mask parameters		
Summation rule	Selection	Desired summation for the means in the equation above (see Eq. 5 in [RD7]), possible selections are <code>Worst case</code> and <code>Exact</code> .
Number of attitude contributors	Selection	The number of attitude contributors ( $N_{att}$ ) that couple with different lever arms to position errors (determines the number of additional block input ports).
Attitude coupling vector	Matrix	$N_{att} \times 3$ mapping matrix with as many rows as attitude contributors are defined. The columns contain the x, y and z components of the i-th coupling vector.

The tree-view of the block finally provides the following information:

- signal content of each attitude and position error signals

- the total mean and standard deviation of the resulting displacement error (time-constant, time-random and overall contribution)
- the mean and standard deviation of the "pure" position error contributor only (time-constant, time-random and overall contribution)
- the mean and standard deviation of the position error due to all the attitude contributors only (time-constant, time-random and overall contribution)

## 7.9 PES Block

The pointing error source block is used to model all kind of error sources applicable to pointing error calculations. Each pointing error source consists of a time constant part and a time random part. The time constant part is defined by a probability distribution function. The time random part is either defined as a random variable or as a random process. Internally, the time constant part and the time random part of type random variable are converted to an equivalent Gaussian distribution. If the time random part is described as a random process, it is converted to a state space representation. The signal generated by a pointing error source block can either be one dimensional or three dimensional. The dimension of the signal is set by the parameter listed in the table below. The dimension applies to the time constant part as well as to the time random part.

Block mask parameters		
Signal dimension	Selection	The dimension of the output signal of the PES block. Possible values are 1D and 3D.
Use time constant part	Checkbox	A flag indicating if the pointing error source provides a time constant part or not.
Use time random part	Checkbox	A flag indicating if the pointing error source provides a time random part or not.

### 7.9.1 Time Constant Block Parameters

The time constant part of the pointing error source block is defined by using a probability distribution function. The parameter responsible for the type of the probability distribution function is given in the next table.

Block mask parameters		
Distribution type	Selection	The probability distribution function used to specify the time constant part of the pointing error source block. Possible values are Discrete, Uniform, Bimodal, Gaussian and Rayleigh.

Depending on the distribution, additional block mask parameters are available to the user. The next subchapters will list the parameters for each probability distribution function applicable for the time constant part.

#### 7.9.1.1 Discrete Distribution Parameters

A discrete distribution is a probability distribution whose variables can only take discrete values. In the context of PEET, only the mean value must be given by the user. The parameters provided by the block mask are shown in the next table.



Block mask parameters		
Mean value	Double / Vector	The mean value of the discrete distribution. In case of a three dimensional PES, this is a vector containing the mean values for the x, y and z axis. For a one dimensional PES, the mean value is a single double value.

### 7.9.1.2 Uniform Distribution Parameters

The uniform distribution is a continuous probability distribution with the probability density function

$$\text{pdf}(x) = \begin{cases} \frac{1}{b-a} & a \leq x \leq b \\ 0 & x < a \text{ or } x > b \end{cases}$$

in which  $a$  is called the minimum value and  $b$  is called the maximum value. The parameters for the Uniform probability distribution are listed below.

Block mask parameters		
Minimum	Double / Vector	The minimum value of the uniform distribution. In case of a three dimensional PES, this is a vector containing the minimum values for the x, y and z axis. For a one dimensional PES, the minimum value is a single double value.
Maximum	Double / Vector	The maximum value of the uniform distribution. In case of a three dimensional PES, this is a vector containing the maximum values for the x, y and z axis. For a one dimensional PES, the maximum value is a single double value.
Axes correlation	String	The correlation between the axes. Possible values are <code>Uncorrelated</code> and <code>Full correlated</code> . Only available in case of a three dimensional PES.

### 7.9.1.3 Bimodal Distribution Parameters

The bimodal distribution is a continuous probability distribution with two modes. The modes appear as two distinct peaks (local maxima) in the probability density function. In the context of PEET it is sufficient to only specify the amplitude of the local maxima. All parameters required by the block mask are shown in the next table.

Block mask parameters		
Amplitude	Double / Vector	The amplitude of the bimodal distribution. In case of a three dimensional PES, this is a vector containing the amplitudes for the x, y and z axis. For a one dimensional PES, the amplitude is a single double value.
Axes correlation	String	The correlation between the axes. Possible values are <code>Uncorrelated</code> and <code>Full correlated</code> . Only available in case of a three dimensional PES.

### 7.9.1.4 Gaussian Distribution Parameters

The Gaussian distribution is a continuous probability distribution with the probability density function

$$\text{pdf}(x) = \frac{1}{\sigma\sqrt{2\pi}} e^{-\frac{1}{2}\left(\frac{x-\mu}{\sigma}\right)^2}$$

in which  $\mu$  is called mean value,  $\sigma$  is called standard deviation and  $\sigma^2$  is called variance. The block mask parameters offered by the PES block are listed below.

Block mask parameters		
Mean value	Double / Vector	The mean value for the Gaussian distribution. In case of a three dimensional PES, this is a vector containing the mean values for the x, y and z axis. For a one dimensional PES, the mean value is a single double value.
Standard deviation	Double / Vector	The standard deviation for the Gaussian distribution. In case of a three dimensional PES, this is a vector containing the standard deviation for the x, y and z axis. For a one dimensional PES, the standard deviation is a single double value.
Axes correlation	String	The correlation between the axes. Possible values are <code>Uncorrelated</code> and <code>Full correlated</code> . Only available in case of a three dimensional PES.

In case of a three dimensional PES, a 3x3 covariance matrix is always used in addition to the mean value. To simplify the user input, the user can specify the correlation between the axes. For an uncorrelated or a fully correlated PES, it is required to only define the standard deviations for the x, y and z axis. These standard deviations are used to compute the diagonal elements of the covariance matrix. Internally all other elements of the covariance matrix are set automatically to 0 for an uncorrelated PES and 1 for a fully correlated PES.

### 7.9.1.5 Rayleigh Distribution Parameter

The Rayleigh distribution is a continuous probability distribution with the probability density function

$$\text{pdf}(x) = \frac{x}{\sigma^2} e^{-\frac{x^2}{2\sigma^2}}, \quad x \geq 0, \sigma > 0$$

in which  $\sigma$  is called the Rayleigh parameter. The parameters provided by the block mask are listed in the next table.

Block mask parameters		
Rayleigh parameter	Double / Vector	The Rayleigh parameter of the Rayleigh distribution. In case of a three dimensional PES, this is a vector containing the Rayleigh

		parameter for the x, y and z axis. For a one dimensional PES, the parameter is a single double value.
Axes correlation	String	The correlation between the axes. Possible values are <code>Uncorrelated</code> and <code>Full correlated</code> . Only available in case of a three dimensional PES.

## 7.9.2 Time Random Block Parameters

The time random part of the pointing error source can either be defined as a random variable or as a random process.

If the time random part is defined as a random variable, the user has to choose from a list of probability distributions. Possible values are `Uniform`, `Gaussian` and `Drift`. For the `Uniform` distribution, the parameters are the same as for the time constant part. The remaining parameters for random variable options are described in chapters 7.9.2.1 and 7.9.2.2

Note that whenever a non-zero mean of a Gaussian RV is defined, PEET automatically maps this mean to a CRV with discrete distribution and removes it from the RV as it essentially represents a time-constant part. The same is true for a uniform RV (e.g. in case of a lower bound 0 and upper bound 3, a CRV with a mean of 1.5 is automatically created).

If the time random part is defined as a random process, the user has to set the type of the random process. Possible types are `Time series`, `PSD`, `Covariance` and `Periodic`. The parameters for these types are explained in the chapters 7.9.2.3 to 7.9.2.6

### 7.9.2.1 Random Variable: Gaussian Distribution Parameters

The parameters for the Gaussian distribution of the time random part are listed in the table below.

Block mask parameters		
Mean value	Double / Vector	In case of a three dimensional PES, this is a vector containing the mean values for the x, y and z axis. For a one dimensional PES, the parameter is a single double value.
Distribution of standard deviation	Selection	The ensemble distribution of the standard deviation. Possible values are <code>Discrete</code> and <code>Uniform</code> .
Standard deviation	Double / Matrix	A 3x1 vector defining the standard deviation for all axes. In case of a one dimensional error source the standard deviation is a scalar value. Only available if the distribution of the standard deviation is set to <code>Discrete</code> .
Minimum	Double / Matrix	A 3x1 vector defining the minimum standard deviation for all axes. In case of a one dimensional error source the minimum standard deviation is a scalar value. Only available if the distribution of

		the standard deviation is set to <code>Uniform</code> .
Maximum	Double / Matrix	A 3x1 vector defining the maximum standard deviation for all axes. In case of a one dimensional error source the maximum standard deviation is a scalar value. Only available if the distribution of the standard deviation is set to <code>Uniform</code> .
Axes correlation	String	The correlation between the axes. Possible values are <code>Uncorrelated</code> and <code>Full correlated</code> . Only available in case of a three dimensional PES.

### 7.9.2.2 Random Variable: Drift Distribution Parameters

The drift distribution is only available for the time random part. The parameters provided by the block mask are listed in the table below.

Block mask parameters		
Reset time	Double	The time after which the drift will be reset.
Rate distribution	Selection	A probability distribution used for the drift rate. Possible values are <code>Discrete</code> , <code>Uniform</code> , <code>Gaussian</code> and <code>Bimodal</code> .
Axes correlation	String	The correlation between the axes. Possible values are <code>Uncorrelated</code> and <code>Full correlated</code> . Only available in case of a three dimensional PES.

Depending on the rate distribution, additional parameters are available in the block mask. These additional parameters are explained below.

#### Discrete Rate Distribution

The parameters for the discrete rate distribution are shown in the next table.

Block mask parameters		
Rate	Double / Vector	The drift rate. In case of a three dimensional PES, this is a vector containing the drift rates for the x, y and z axis. For a one dimensional PES, the parameter is a single double value.

#### Uniform Rate Distribution

The table below list all parameters available for the uniform rate distribution.

Block mask parameters		
Minimum rate	Double / Vector	The minimum drift rate. In case of a three dimensional PES, this is a vector containing the minimum drift rates for the x, y and z axis. For a one dimensional PES, the parameter is a single double value.
Maximum rate	Double / Vector	The maximum drift rate. In case of a three

		dimensional PES, this is a vector containing the maximum drift rates for the x, y and z axis. For a one dimensional PES, the parameter is a single double value.
--	--	--

### Gaussian Rate Distribution

The parameters provided by the block mask for the Gaussian rate distribution are listed below.

Block mask parameters		
Mean rate	Double / Vector	The mean drift rate. In case of a three dimensional PES, this is a vector containing the mean drift rates for the x, y and z axis. For a one dimensional PES, the parameter is a single double value.
Standard deviation	Double / Matrix	The standard deviation of the drift rate. In case of a three dimensional PES, 3x1 vector containing the standard deviations and the standard deviations. For a one dimensional PES, the variance is a single double value.

### Bimodal Rate Distribution

Only one single parameter is required for the bimodal rate distribution. This parameter is explained below.

Block mask parameters		
Amplitude	Double / Vector	The amplitude for a bimodal drift distribution. In case of a three dimensional PES, this is a vector containing the amplitudes for the x, y and z axis. For a one dimensional PES, the parameter is a single double value.

### 7.9.2.3 Random Process: Time Series Parameters

In case the time random part is defined as a random process of type `Time series`, the block mask provides a single table containing time-value data. For each time step, a new row must be added to this table, which contains the time and the data values for the x, y and z axis at this time point. The time series are then converted to equivalent spectrum magnitudes (auto- and cross-spectra) first. This frequency-magnitude data is fitted to a rational transfer function in a subsequent step.

Block mask parameters		
Min. pole order	Double	The minimum order used for the rational fit of the retrieved PSD (optional)
Max. pole order	Double	The maximum order used for the rational fit of the retrieved PSD (optional)
Time series	List	A list of time-value pairs containing the time and the data values for the x, y, and z axis. In case of a 1D signal, only a single data value must be

		provided.
--	--	-----------

#### 7.9.2.4 Random Process: PSD Parameters

For the random process of type PSD, the user has to specify a either a 3x3 matrix in which the elements can either be transfer functions, frequency-response models or zero-pole-gain models or he has to specify a state space model. The parameters for the PSD type are similar to the parameters of the dynamic system block. For an explanation of the parameters see chapter 7.2.1.

In addition to these PSD representations, the user can also select `Spectrum magnitude` as PSD representation. In this case the following parameters are available.

Spectrum magnitude parameters		
Frequency-Magnitude	List	A list specifying frequency-magnitude data. In case of a three dimensional PES, a magnitude for all three axes must be provided for all frequency points. For a 1D signal, only one magnitude at each frequency point is required.
Axes correlation	Selection	The correlation between the axes. Possible values are <code>Uncorrelated</code> and <code>Fully correlated</code>

#### 7.9.2.5 Random Process: Covariance Parameters

For a random process of type `Covariance`, the following parameters are available in the block mask.

Block mask parameters		
Sampling time	Double	The sampling time
Axes correlation	Selection	Only available for a three dimensional PES. This parameter defines the correlation between the x, y and z axis. Possible values are <code>Uncorrelated</code> and <code>Fully correlated</code>
Variance	Double / Vector	In case of a three dimensional PES, this is a vector containing the desired variance for the x, y and z axis. For a one dimensional PES, the variance is a single double value and always available.

In case of a three dimensional PES, a 3x3 covariance matrix is always used in addition to the sampling time. To simplify the user input, the user can specify the correlation between the axes. For an uncorrelated or a fully correlated PES, it is required to only define the variances for the x, y and z axis. These variances are used for the diagonal elements of the covariance matrix. Internally all other elements of the covariance matrix are set automatically to 0 for an uncorrelated PES and 1 for a fully correlated PES.

#### 7.9.2.6 Random Process: Periodic Parameters

In case the `Periodic` type is used for the random process definition, the PES output signal is supposed to be a composition of sine functions. In this case, the required block mask parameters are listed in the next table.

Block mask parameters		
Amplitude distribution	Selection	The distribution of the amplitude. Possible values are <code>Discrete</code> and <code>Uniform</code> .
Axes correlation	Selection	Only available for a three dimensional PES. This parameter defines the correlation between the x, y and z axis. Possible values are <code>Uncorrelated</code> and <code>Fully correlated</code>
Frequency-Amplitude	List	The frequency amplitude data. This data depends on the PES dimension and the amplitude distribution.

For a one dimensional PES and a discrete amplitude distribution, the frequency-amplitude data contains the frequency and a single amplitude. For a uniform amplitude distribution, the frequency-amplitude data contains the frequency, a minimum amplitude and a maximum amplitude. In case of a three dimensional PES, the same data must be provided but for all three axis x, y, and z.

## 7.10 Reaction Wheel Model

PEET provides two special pointing error source blocks for setting up disturbance forces and torques on the spacecraft interface which are generated by a single reaction wheel. The output disturbance is always provided with respect to the wheel frame (defined by wheel spin around z-axis). The orientation of the wheel in the spacecraft/reference frame can be realized with the Coordinate Transformation PEET block, multiple wheels by repeated usage of this block. The implemented models are based on [RD8] (which are further based on [RD9] and [RD10]) and briefly explained in the following subsections.

### 7.10.1 Reaction Wheel (Force)

The disturbance force model includes models for the radial and axial translation mode of the wheel and covers different kinds of parameter sets for the excitation force inputs. The definition of axial force parameters is optional.

#### 7.10.1.1 Radial Force Model

The radial (wheel x-y plane) disturbance forces acting on the spacecraft interface are modelled using the set of equations described below:

$$\begin{bmatrix} m & 0 \\ 0 & m \end{bmatrix} \begin{bmatrix} \ddot{x} \\ \ddot{y} \end{bmatrix} + \begin{bmatrix} c_r & 0 \\ 0 & c_r \end{bmatrix} \begin{bmatrix} \dot{x} \\ \dot{y} \end{bmatrix} + \begin{bmatrix} k_r & 0 \\ 0 & k_r \end{bmatrix} \begin{bmatrix} x \\ y \end{bmatrix} = \mathbf{F}_r \quad \text{Eq 7-6}$$

$$c_r = 4\pi\zeta_r f_r m \quad \text{Eq 7-7}$$

$$k_r = m(2\pi f_r)^2 \quad \text{Eq 7-8}$$

$$\mathbf{F}_{r,SC} = \begin{bmatrix} k_r & 0 \\ 0 & k_r \end{bmatrix} \begin{bmatrix} x \\ y \end{bmatrix} \quad \text{Eq 7-9}$$

with:

- $m$  flywheel mass
- $\mathbf{F}_r$  the (x,y) excitation forces for the radial translation mode
- $\xi_r$  damping of the radial translation mode
- $f_r$  frequency of the radial translation mode
- $\mathbf{F}_{r,SC}$  resulting (x,y) disturbance forces at the spacecraft interface

### 7.10.1.2 Axial Force Model

The axial (wheel z-axis) disturbance forces acting on the spacecraft interface are modelled using the set of equations described below:

$$m\ddot{z} + c_a \dot{z} + k_a z = F_a \quad \text{Eq 7-10}$$

$$c_a = 4\pi\xi_a f_a m \quad \text{Eq 7-11}$$

$$k_a = m(2\pi f_a)^2 \quad \text{Eq 7-12}$$

$$F_{a,SC} = k_a z \quad \text{Eq 7-13}$$

with:

- $m$  flywheel mass
- $F_a$  the excitation forces for the axial translation mode
- $\xi_a$  damping of the axial translation mode
- $f_a$  frequency of the axial translation mode
- $F_{a,SC}$  resulting (z) disturbance force at the spacecraft interface

### 7.10.1.3 Excitation Force Model

According to [RD8] the overall excitation force comprises (broadband) noise and tonal disturbances which can be defined individually for the radial and axial modes.

$$\mathbf{F} = \begin{bmatrix} \mathbf{F}_r \\ \mathbf{F}_a \end{bmatrix} = \begin{bmatrix} \mathbf{F}_r \\ \mathbf{F}_r \\ \mathbf{F}_a \end{bmatrix} = \begin{bmatrix} \mathbf{F}_{r,tonal} + \mathbf{F}_{r,noise} \\ \mathbf{F}_{r,tonal} + \mathbf{F}_{r,noise} \\ \mathbf{F}_{a,tonal} + \mathbf{F}_{a,noise} \end{bmatrix} \quad \text{Eq 7-14}$$



**Noise:**

The noise contribution to both the axial and translational force can be defined in different ways which correspond to selected options also available from the 'standard' PES block (section 7.9.2):

- by definition of a standard deviation only (RV definition)
- by definition noise bandwidth upper frequency together with a standard deviation which is converted to a PSD (random process definition)
- by direct definition of a PSD (random process definition)

**Tonal disturbance:**

The tonal force contributions to both the axial and translational force are realized as one periodic 3D signal with amplitudes at frequencies of the corresponding harmonics. The amplitude  $A_k$  of the  $k$ -th harmonic ( $k=1\dots N$ , index for radial and axial mode omitted) and the corresponding frequency  $f_k$  are obtained from:

$$A_k = C_k \Omega^2 \quad \text{Eq 7-15}$$

$$f_k = 2\pi h_k \Omega \quad \text{Eq 7-16}$$

where  $\Omega$  is the spin speed of the wheel,  $C_k$  is the amplitude coefficient of the  $k$ -th harmonic and  $h_k$  the harmonic number (i.e. the ratio of frequency of  $k$ -th harmonic to spin frequency of the wheel).

Alternatively the radial disturbance can also be defined by the static imbalance coefficient  $U_s$  (i.e. considering only the first harmonic) resulting in an amplitude/frequency set:

$$A_1 = U_s \Omega^2 \quad \text{Eq 7-17}$$

$$f_1 = 2\pi \Omega \quad \text{Eq 7-18}$$

The wheel speed itself is assumed to be constant within a single observation period. This can be understood as a "linearization" around a certain working point during the observation.

In addition it has to be noted that there is no distinction between the radial axes amplitudes ( $x$  and  $y$ ) although the time-based model in [RD8] accounts for the  $90^\circ$  phase shift between the axes for each harmonic. This is however no restriction of the model as from a performance point of view only the overall magnitude or temporal mean is of interest when applying the statistical interpretation.

Furthermore it has to be noted that the arbitrary phase angle between different harmonics cannot be directly accounted for as in the time-domain model from [RD8]. As a full correlation between the different harmonics and axes) might be too pessimistic, an uncorrelated set is realized in the PEET model.

### 7.10.1.4 Block Parameters

The following tables summarize the parameters to be defined by the user.

Wheel properties:

Block mask parameters		
Wheel mass	Double	mass of the flywheel [kg]
Wheel speed	Double	Rotational speed of the reaction wheel [rpm]
Broadband force noise	Selection	Representation type of broadband noise case (Standard deviation, Band-limited or PSD)

Radial mode:

Block mask parameters		
Translation mode frequency	Double	Radial translation mode frequency [Hz]
Translation mode damping	Double	Radial translation mode damping [-]
Noise standard deviation	Double	Force noise standard deviation (case Standard deviation or Band-limited) [N]
Noise bandwidth	Double	Upper frequency limit for force noise content (case Band-limited) [Hz]
PSD representation	Dependent	See section 7.9.2.4 [N/√Hz] (case PSD)
Tonal disturbance	Selection	Type of noise model for radial force (by imbalance or by harmonics)
Static imbalance coefficient	Double	Static imbalance coefficient (case by imbalance) [cm g]
Number of harmonics	Double	Overall number N of harmonics to be considered for the radial mode (case by harmonics) [-]
Amplitude coefficients	Vector	Nx1 vector of amplitude coefficients (case by harmonics) [N/rpm <sup>2</sup> ]
Harmonic numbers	Vector	Harmonic numbers, i.e. ratios of frequency of harmonic with respect to wheel speed (case by harmonics) [-]

Axial mode (fully optional via checkbox):

Block mask parameters		
Axial mode frequency	Double	Axial translation mode frequency [Hz]
Axial mode damping	Double	Axial translation mode damping [-]
Noise standard deviation	Double	Force noise standard deviation (case Standard deviation or Band-limited) [N]
Noise bandwidth	Double	Upper frequency limit for force noise content (case Band-limited) [Hz]
PSD representation	Dependent	See section 7.9.2.4 [N/√Hz] (case PSD)

Number of harmonics	Double	Overall number N of harmonics to be considered for the axial mode [-]
Amplitude coefficients	Vector	Nx1 vector of amplitude coefficients [N/rpm <sup>2</sup> ]
Harmonic numbers	Vector	Harmonic numbers, i.e. ratios of frequency of harmonic with respect to wheel speed [-]

## 7.10.2 Reaction Wheel (Torque)

The disturbance torque model includes a model for the rocking mode (in the x-y plane) only as according to [RD8] axial disturbance are negligible.

### 7.10.2.1 Rocking Mode Model

The disturbance torques due to the rocking mode (wheel x-y plane) which act on the spacecraft interface are modelled using the set of equations described below:

$$\begin{bmatrix} I_{rr} & 0 \\ 0 & I_{rr} \end{bmatrix} \begin{bmatrix} \ddot{\phi} \\ \ddot{\theta} \end{bmatrix} + \begin{bmatrix} c_{rock} & \Omega I_{zz} \\ -\Omega I_{zz} & c_{rock} \end{bmatrix} \begin{bmatrix} \dot{\phi} \\ \dot{\theta} \end{bmatrix} + \begin{bmatrix} k_{rock} & 0 \\ 0 & k_{rock} \end{bmatrix} \begin{bmatrix} \phi \\ \theta \end{bmatrix} = \mathbf{T}_{rock} \quad \text{Eq 7-19}$$

$$c_{rock} = 4\pi\xi_{rock}f_{rock}I_{rr} \quad \text{Eq 7-20}$$

$$k_{rock} = I_{rr}(2\pi f_{rock})^2 \quad \text{Eq 7-21}$$

$$\mathbf{T}_{rock,SC} = \begin{bmatrix} k_{rock} & 0 \\ 0 & k_{rock} \end{bmatrix} \begin{bmatrix} \phi \\ \theta \end{bmatrix} \quad \text{Eq 7-22}$$

with:

- $I_{rr}$  flywheel inertia perpendicular to spin axis
- $I_{zz}$  flywheel inertia about spin axis
- $\mathbf{T}_{rock}$  (x,y) excitation torques for the rocking mode
- $\xi_{rock}$  damping of the rocking translation mode
- $f_{rock}$  frequency of the rocking mode
- $\mathbf{T}_{rock,SC}$  resulting (x,y) disturbance torques at the spacecraft interface

### 7.10.2.2 Excitation Torque Model

According to [RD8] the overall excitation torque comprises (broadband) noise and tonal disturbances for the rocking mode and negligible disturbance torques around the z-axis ( $\psi$ ).

$$\mathbf{T} = \begin{bmatrix} \mathbf{T}_{\text{rock}} \\ 0 \end{bmatrix} = \begin{bmatrix} \mathbf{T}_{\text{rock}} \\ \mathbf{T}_{\text{rock}} \\ 0 \end{bmatrix} = \begin{bmatrix} \mathbf{T}_{\text{rock,tonal}} + \mathbf{T}_{\text{rock,noise}} \\ \mathbf{T}_{\text{rock,tonal}} + \mathbf{T}_{\text{rock,noise}} \\ 0 \end{bmatrix} \quad \text{Eq 7-23}$$

### Noise:

The noise contribution to the torque can be defined in different ways which correspond to selected options also available from the 'standard' PES block (section 7.9.2):

- by definition of a standard deviation only (RV definition)
- by definition noise bandwidth upper frequency together with a standard deviation which is converted to a PSD (random process definition)
- by direct definition of a PSD (random process definition)

### Tonal disturbance:

The tonal torque contribution from the rocking mode is realized as one periodic 3D signal with amplitudes at frequencies of the corresponding harmonics. The amplitude  $A_k$  of the k-th harmonic ( $k=1\dots N$ , index for rocking mode omitted) and the corresponding frequency  $f_k$  are obtained from:

$$A_k = C_k \Omega^2 \quad \text{Eq 7-24}$$

$$f_k = 2\pi h_k \Omega \quad \text{Eq 7-25}$$

where  $\Omega$  is the spin speed of the wheel,  $C_k$  is the amplitude coefficient of the k-th harmonic and  $h_k$  the harmonic number (i.e. the ratio of frequency of k-th harmonic to spin frequency of the wheel).

Alternatively the rocking mode can also be defined by the dynamic imbalance coefficient  $U_d$  (i.e. considering only the first harmonic) resulting in an amplitude/frequency set:

$$A_1 = U_d \Omega^2 \quad \text{Eq 7-26}$$

$$f_1 = 2\pi \Omega \quad \text{Eq 7-27}$$

The wheel speed is assumed to be constant within a single observation period. This can be understood as a "linearization" around a certain working point during the observation.

In addition it has to be noted that there is no distinction between the radial axes amplitudes ( $\phi$  and  $\theta$ ) although the time-based model in [RD8] accounts for the 90° phase shift between the axes for each harmonic. This is however no restriction of the model as from a performance point of view only the overall magnitude or temporal mean is of interest when applying the statistical interpretation.

Furthermore it has to be noted that the arbitrary phase angle between different harmonics cannot be directly accounted for as in the time-domain model from [RD8]. As a full correlation between the different harmonics and axes) might be too pessimistic, an uncorrelated set is realized in the PEET model.

### 7.10.2.3 Block Parameters

The following tables summarize the parameters to be defined by the user.

Wheel properties:

Block mask parameters		
Inertia about spin axis	Double	Wheel inertia about spin axis [kg m <sup>2</sup> ]
Inertia perpendicular to spin axis	Double	Wheel inertia perpendicular to spin axis [kg m <sup>2</sup> ]
Wheel speed	Double	Rotational speed of the reaction wheel [rpm]

Rocking mode:

Block mask parameters		
Rocking mode frequency	Double	Rocking mode frequency [Hz]
Rocking mode damping	Double	Rocking mode damping [-]
Broadband noise	Selection	Type of noise model for torque (Standard deviation, Band-limited or PSD)
Noise standard deviation	Double	Torque noise standard deviation (case Standard deviation or Band-limited) [Nm]
Noise bandwidth	Double	Upper frequency limit for torque noise content (case Band-limited) [Hz]
PSD representation	Dependent	See section 7.9.2.4 [N/√Hz] (case PSD)
Tonal disturbance	Selection	Type of noise model for disturbance torque (by imbalance or by harmonics)
Dynamic imbalance coefficient	Double	Dynamic imbalance coefficient (case by imbalance) [cm <sup>2</sup> g]
Number of harmonics	Double	Overall number N of harmonics to be considered for the rocking mode (case by harmonics) [-]
Amplitude coefficients	Vector	Nx1 vector of amplitude coefficients (case by harmonics) [Nm/rpm <sup>2</sup> ]
Harmonic numbers	Vector	Harmonic numbers, i.e. ratios of frequency of harmonic with respect to wheel speed (case by harmonics) [-]

## 7.11 Rigid Plant

This block can be used to add rigid plants to the pointing system. It realizes the following ideal plant model:

$$\Theta \ddot{\omega} = N \quad \text{Eq 7-28}$$

with:

- $\Theta$  spacecraft inertia matrix (3x3)
- $\omega$  vector of spacecraft angular rates (3x1)
- $N$  vector of torques acting on the spacecraft body (3x1)

### 7.11.1 Block Parameters

The block mask parameters are listed in the next table.

Block mask parameters		
Inertia	Matrix	A 3x3 matrix of containing the inertia.

## 7.12 PID Controller

This block represents a system transfer via a set of ideal single-input single-output Proportional-Integral-Derivative (PID) controllers. It is represented (in transfer function notation) by the following model individually for each axis:

$$K = K_p + \frac{K_i}{s} + K_d s \quad \text{Eq 7-29}$$

with:

- $K$  total controller transfer function
- $K_p$  proportional gain of the controller
- $K_i$  integral gain of the controller
- $K_d$  differential gain of the controller
- $s$  'Laplace variable'

### 7.12.1 Block Parameters

The block mask parameters are listed in the next table.

Block mask parameters		
P-Gains	Vector	A vector containing the proportional gains for each axis.
I-Gains	Vector	A vector containing the integral gains for each axis.
D-Gains	Vector	A vector containing the differential gains for each axis.

Note that per definition of this block only a single 3D input signal can be fed to the PID controller. However, more complex inputs (e.g. feeding an attitude signal to the proportional part and a rate signal to the differential one) can be realized by proper modification of the desired closed-loop structure. An example for such realization is given in section 6.2.8.3 of [RD1].

## 7.13 Static System Block

The static system block is used to model all kind of static systems. The static system block is using a 3x3 static gain matrix as the system model. The elements of the system transfer matrix are double values.

### 7.13.1 Block Parameters

The block mask parameters for the static system block are listed below.

Block mask parameters		
System matrix	Matrix	A 3x3 matrix of double values, describing the system transfer.

## 7.14 Summation Block

The summation block is used to sum up several error signals to one single signal. It offers the user a single block mask parameter. This parameter defines the number of input ports of the summation block and is listed below.

Block mask parameters		
Number of input ports	Selection	The number of block input ports. The number of input ports is in the range from 1 to 99.

## 7.15 Star Tracker Noise Block

This special error source block implements a parametric model for the pixel and field of view noise of a typical star tracker (temporal noise is not included and has to be defined in a separate pointing error source block, e.g. as 'standard' random process of type desired by the user). The underlying model is briefly described below, starting with the spectrum of the field of view noise:

$$\text{PSD}_{\text{FOV}} = \frac{\sqrt{T_{\text{FOV}}}}{1 + s \frac{T_{\text{FOV}}}{2}} n_{\text{FOV}} \quad \text{Eq 7-30}$$

The correlation time  $T_{\text{FOV}}$  is assumed to be proportional to the inverse of the velocity  $v_{\text{star}}$  (pixels/sec) with which the star image moves on the sensor pixel matrix:

$$T_{\text{FOV}} = \frac{1024}{v_{\text{star}} \sqrt{N_{\text{stars}}}} \quad \text{Eq 7-31}$$

The star velocity itself can be linked to the average spacecraft angular velocity  $\omega_{\text{SC}}$  :

$$v_{\text{star}} = \omega \frac{1024}{\text{FOV}} \sin \beta \cos \alpha \quad \text{Eq 7-32}$$

where FOV is the sensor field,  $\beta$  is the angle between the sensor boresight and the spacecraft rotation axis and  $\alpha$  is the angle between the star image direction of motion on the detector matrix and the reference axis.

The PSD of the field of view noise can be modelled using a 2nd-order filter as:

$$\text{PSD}_{\text{pixel}} = \frac{\omega_0^2 \sqrt{T_{\text{pixel}}}}{s^2 + 2\xi\omega_0 s + \omega_0^2} n_{\text{pixel}} \quad \text{Eq 7-33}$$

where the characteristic frequency  $\omega_0$  is given by:

$$\omega_0 = \frac{4\xi}{T_{\text{pixel}}} \quad \text{Eq 7-34}$$

The correlation time  $T_{\text{pixel}}$  is again assumed to be proportional to the inverse of the velocity  $v_{\text{star}}$ :

$$T_{\text{pixel}} = \frac{N_{\text{pixels}}}{v_{\text{star}}} \quad \text{Eq 7-35}$$

where  $N_{\text{pixels}}$  is the size of the centroiding window.

### 7.15.1 Block Parameters

The block mask parameters for the star tracker noise are listed in the next table, subdivided into general parameters, field of view noise parameters and pixel noise parameters.

General parameters:

Block mask parameters		
Detector size	Double	Number of detector pixels.
Sensor field of view	Double	Field of view of the sensor camera head.
Spacecraft angular velocity	Double	Average spacecraft angular velocity.
Average number of tracked stars	Double	Average number of stars tracked by the sensor.
Alpha*	Double	The angle between the star image direction of motion on the detector matrix and the reference axis.
Beta*	Double	The angle between the sensor boresight and the spacecraft rotation axis.

\*Note: For a worst-case set Alpha to 0 and Beta to  $\pi/2$ .

Field of view noise parameters:



Block mask parameters		
Noise level	Double	The low frequency noise level for all axes

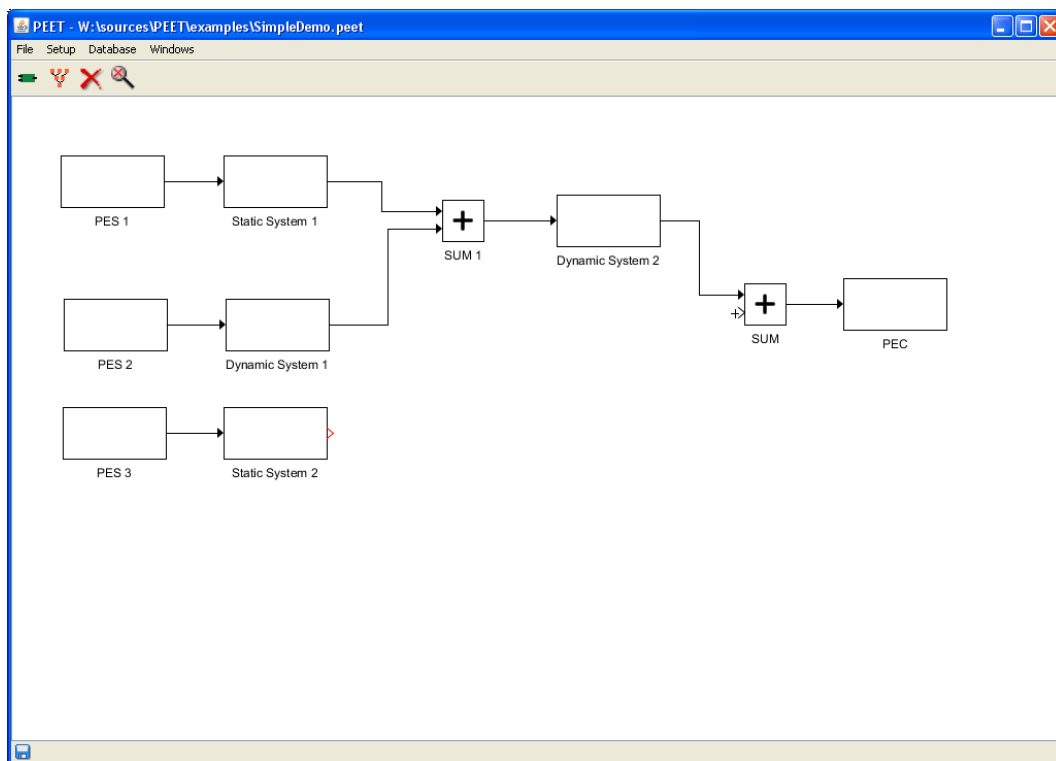
Pixel noise parameters:

Block mask parameters		
Size of centroiding window	Double	The size of the centroiding window in pixels.
Noise level (boresight)	Double	The low frequency noise level for the sensor boresight axis.
Noise level (cross-axes)	Double	The low frequency noise level for the cross boresight axes.
2nd-order filter filter damping coefficient	Double	The damping coefficient used for the pixel noise transfer function.

## 8 Building Pointing Systems Using PEET

Building pointing systems using PEET is similar to Simulink. Blocks are added to the pointing system by dragging the required block type from the database browser to the system view window. After the block was added, it must be connected with other blocks of the pointing system. To create a connection between two blocks, the user must first select either the port of the source block or the port of the destination block. To select a block port, the mouse must be moved near the block port until the mouse cursor changes to a cross. Clicking on the port will select it. A selected block port is visualized with a red color (see Figure 8-1).

Note that each pointing system requires at least one PEC block (position or pointing) to which the final error signals are routed.



**Figure 8-1: Connecting Static System 2 and SUM**

After one of the two required block ports is selected, the mouse must be moved to the second block port. Again the mouse cursor changes to a cross as soon as the cursor is near the block port. Clicking on the second block port now creates the connection between the blocks.

The shape of the newly created connection can be adjusted by first selecting the connection. As soon as the connection is selected, it changes its colour to red. It also owns some nodes visualized as small circles. An example of a selected connection is given in Figure 6-2. By dragging the nodes of the connection, the shape can be freely adjusted.

## 8.1 Global settings

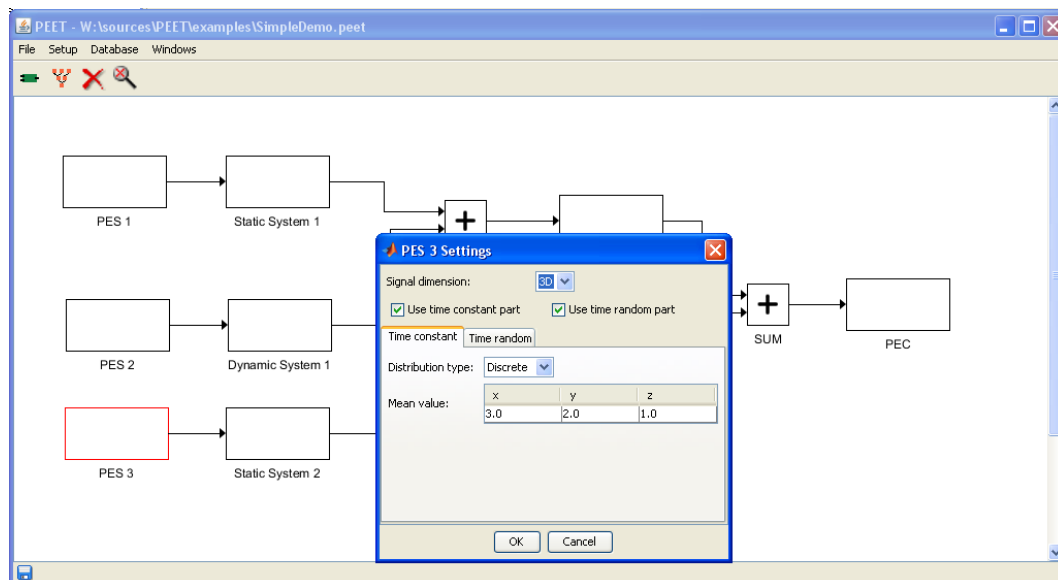
Before computing the error budget some global settings can be adapted by the user. This is done by selecting *Settings* from the *Setup* menu. Here the evaluation bandwidth for the determination of equivalent random process variances can be specified by providing

- the upper and lower frequency bounds
- the number of frequency points evaluated between these bounds.

In addition the line-of-sight axis for the pointing error evaluation can be selected.

## 8.2 Configuring blocks

After a block was added to the pointing system, its parameters must be set. This is done by double clicking on the block. This will bring up the block mask associated with the block type. Figure 8-2 gives an example for such a block mask.



**Figure 8-2: Block mask for a pointing error source**

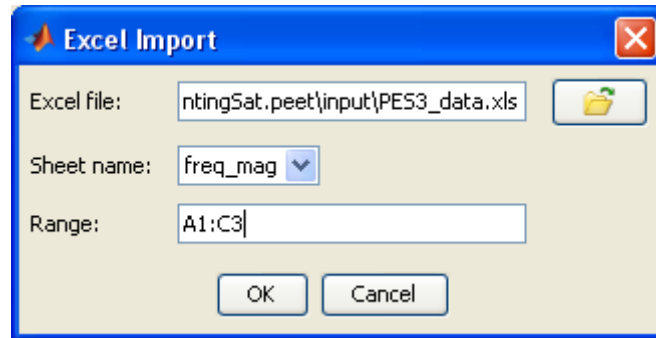
The content of the block mask is different for every block type. A detailed description of the block parameters is given in chapter 7.

### 8.2.1 Linking to external data

It is possible to link parameter values to data provided in an Excel file or data defined in the MATLAB workspace.

#### 8.2.1.1 Linking to Excel data

To link parameter values to data in an Excel file, right-click on the parameter input field and select *Import from Excel*. This will open a new dialog which supports the user in defining the cells containing the parameter values. This dialog is shown in Figure 8-3. First of all, the user has to provide the name of the Excel file.



**Figure 8-3: The Excel Import dialog**

The next step is to select the Excel sheet from the dropdown list. Finally the data range must be defined. In case of vector data the data range can either be defined as a row or column vector.

### Scalar values

Scalar values can be defined in two ways:

1. The column is defined by upper case letters, the row is defined by an index. The row index of the first row is 1.  
*Example:* Setting range to `A1` will link the first cell in the first row of an Excel sheet.
2. The row and column is defined by an index starting at 1. The column index comes first and is preceded by the lower letter `c`. The row index is preceded by the lower letter `r`.  
*Example:* Setting range to `c1r1` will link the first cell in the first row of an Excel sheet.

### Matrix and table data

Matrix and table data values can be defined similar to scalar values. In this case, the upper left and the lower right cell of the data range must be defined.

1. The upper left and the lower right cell are defined using upper case letters for the columns and indices for the rows. The row index of the first row is 1. The cells are separated by `':'`.  
*Example:* Setting range to `A1:C3` will link a 3x3 matrix starting at the first cell of the first row of an Excel sheet.
2. The upper left and the lower right cell are defined using row and column indices starting at 1. The column index comes first and is preceded by the lower letter `c`. The row index is preceded by the lower letter `r`. The cells are separated by `':'`.  
*Example:* Setting the range to `c1r1:c3r3` will link a 3x3 matrix starting at the first cell of the first row of an Excel sheet.

#### 8.2.1.2 Linking to MATLAB workspace variables

Linking parameter values to MATLAB variables is similar to the linking of Excel data. In order to link data from the MATLAB workspace, a MATLAB variable must be created before parameter values can be linked to it. Afterwards right-click on the parameter input field which will be linked and select `Import from MATLAB`. A new dialog will be shown, providing a dropdown list of all available MATLAB variables. It is up to the user to select a

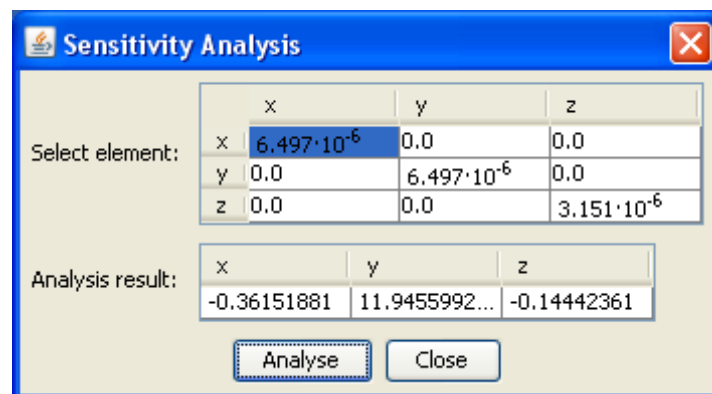
variable which fits to the dimension of the linked block parameter. In case of tabular data, the linked data must have the same number of columns, but can have as many rows as desired.

## 8.2.2 Sensitivity analysis

PEET provides the possibility of a sensitivity analysis. This feature can be accessed by the same popup menu used to link parameters to external data sources (see chapter 8.2.1). After selecting sensitivity analysis, the sensitivity analysis manager shown in Figure 8-4 will be opened.

The sensitivity analysis uses difference quotients for each axis to compute the sensitivity. Therefore the user first selects the parameter element he wants to examine. In case of a scalar value, nothing has to be selected. Pressing the *Analyse* button will now compute the difference quotients. During the analysis, the total pointing error is computed twice. First the total pointing error for the perturbed parameter element  $Param_{pert}$  is computed. Afterwards the total pointing error for the unperturbed parameter element  $Param$  is computed. The parameter element is perturbed using the equations below.

$$Param_{pert} = \begin{cases} Param + 2.2e^{-8}, & |Param| \leq 1.0 \\ Param * (1.0 + 2.2e^{-8}), & |Param| > 1.0 \end{cases}$$



**Figure 8-4: Sensitivity Analysis Manager**

Finally, for each axis the difference quotient is computed using the equation

$$Sensitivity = \frac{Total\ pointing\ error_{axis,pert} - Total\ pointing\ error_{axis}}{Param_{pert} - Param}$$

After the sensitivity analysis has finished, the sensitivity for each axis can be seen in the sensitivity analysis manager. The unit of the sensitivity depends on the unit of the parameter. In general the unit is rad/parameter unit.

*Example:* Let's consider the sensitivity analysis, shown in Figure 8-4, was performed for a parameter which has the unit rad/kelvin. In this case we can observe several things:

1. Perturbing the first element of the first row will have an effect on all three axes.
2. Comparing all three axes, the y-axis is very sensitive to changes on the selected parameter element
3. The unit of the sensitivity will be  $\frac{rad}{rad/kelvin} = kelvin$ .

4. Increasing the selected parameter element by 1 rad/kelvin will decrease the total pointing error on the x-axis by 0.36151881 rad.
5. Increasing the selected parameter element by 1 rad/kelvin will increase the total pointing error on the y-axis by 11.9455992 rad.
6. Increasing the selected parameter element by 1 rad/kelvin will decrease the total pointing error on the z-axis by 0.14442361 rad.

### 8.3 Container blocks

Container blocks are a special kind of block type. They can be used to abstract a complex block structure into a single block symbol. They do not have a block mask. Double clicking a container block will open a new system view window. Figure 8-5 shows an example for a container block. The content of a container block is added to the system view of the container in the same way as for the pointing system. All the blocks added to a container must be configured separately.

Container blocks can have as many input and output ports as required. Input and output ports are defined by adding Input Port and Output Port blocks from the database browser to the system view of the container block.

Container blocks can also be exported to the block database as user defined block types. This is done by selecting the container block which should be exported and selecting the menu *Database - Export selected block*. This will open a dialog in which the name of the block type and the category can be defined. It is also possible to create a new category.

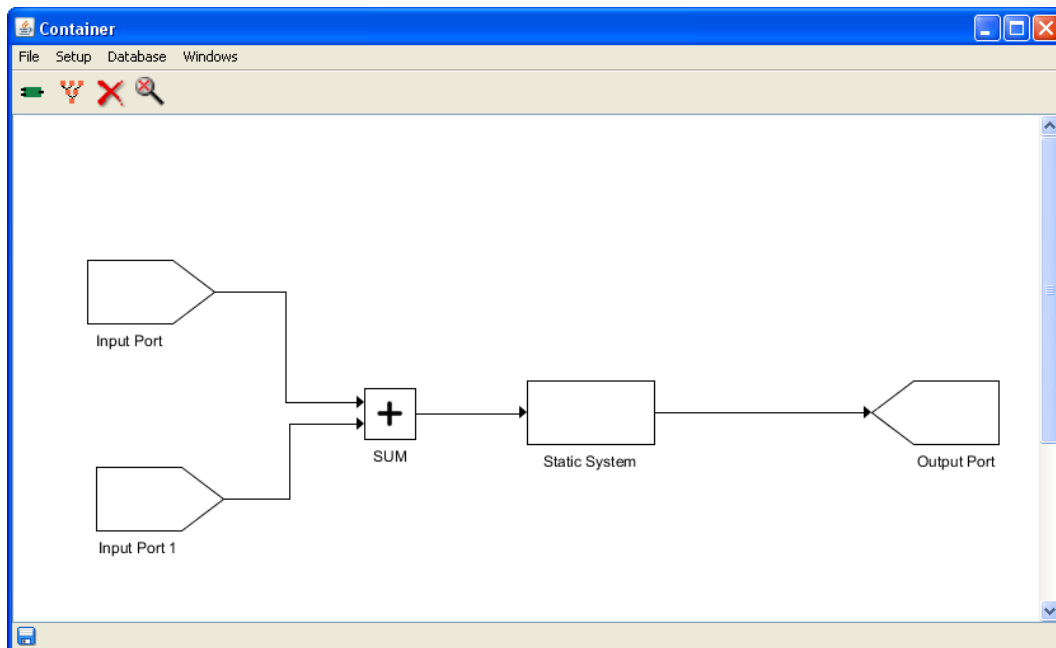
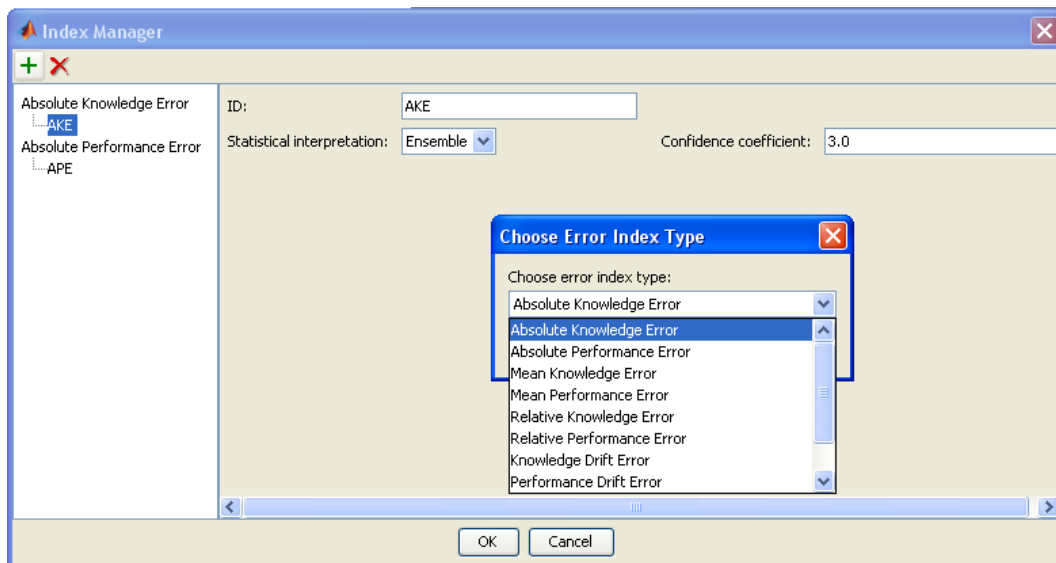


Figure 8-5: System View window for a container block

## 9 Computing Pointing Errors Using PEET

After the pointing system has been built, the error computation can be performed. To perform the error computation, one or more error indices must be defined. This is done by selecting *Edit Error Indices* from the *Setup* menu. This will open the Error Index Manager shown in Figure 9-1.



**Figure 9-1: Error Index Manager**

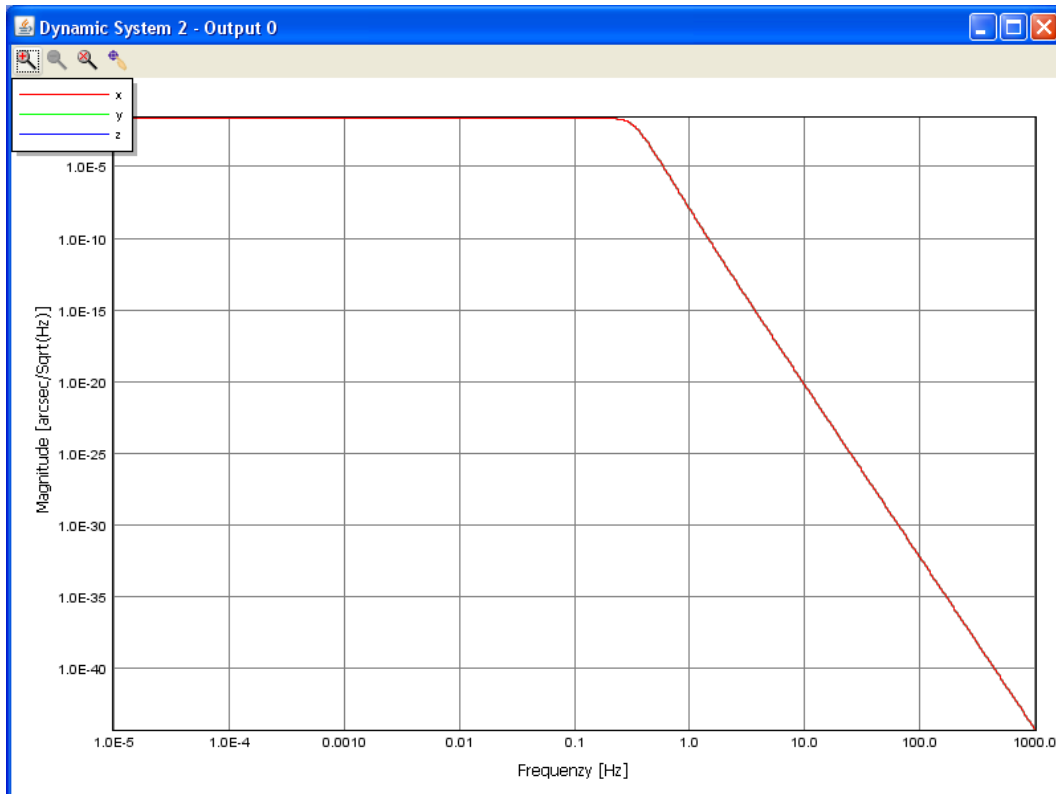
On the left side of the Error Index Manager, a list of all currently defined error indices is shown. Selecting one of the list entries allows the user to edit the parameters for the error index.

Error indices can be added or removed by the elements of the tool bar. If a new index will be added, the user has to choose the type of the error index. The absolute knowledge error and the absolute performance error can be only defined once. All other index types can be defined several times. To remove an error index, select the error index and click on the cross in the tool bar. All defined error indices are available in the dropdown menu of the tree view window.

After one or more error indices are defined, the computation can be triggered inside the tree view window. The computation is either triggered by changing the error index in the dropdown menu or by pressing the green arrow in the tool bar of the tree view. Every time a block parameter was changed, the computation must be performed again by clicking on the green arrow or by changing the error index.

The results of the pointing error computation can be analysed in the information section of the tree view window. Each signal consists of several signal parts. These parts are constant random variable, random variable, drift, random process and periodic (see Figure 6-3). Not all signal parts are always available. If a signal part is not available, it is marked as N/A in the information section of the tree view window.

The random process signal part is represented by a PSD plot. In the information section, a preview of the plot is shown. This preview can be enlarged by double clicking on the plot. This will open a new plot window shown in Figure 9-2.



**Figure 9-2: Plot window**

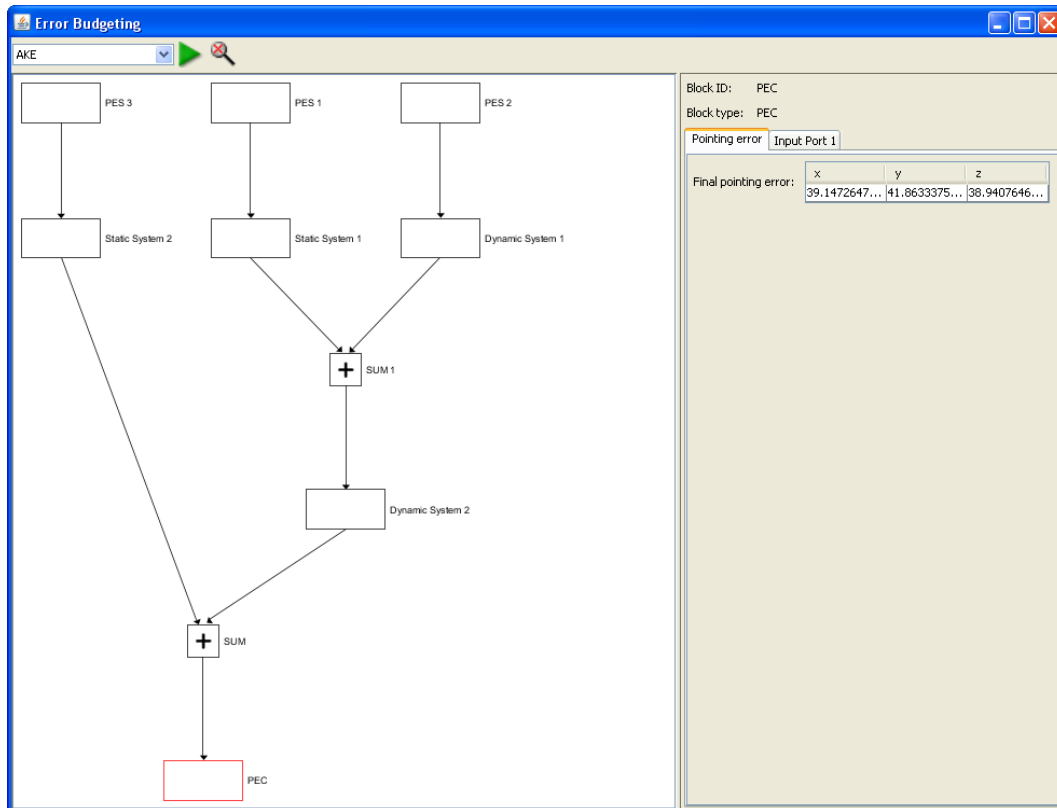
In this plot window the plot can be examined in detail. It is possible to click on one of the lines to get a detailed description of the current value at this position. To do this, the data picker must be first selected in the tool bar (right most icon). It is also possible to zoom into the plot in order to enlarge certain regions. This is done by using the right mouse button and dragging a rectangle to define the region of interest.

To analyse the final pointing error, the PEC block must be selected in the tree view window. In this case, the final pointing error is shown on the first tab of the information section (see Figure 9-3):

- The total error on all axes individually
- The error contribution from all time-constant signals
- The error contribution from all time-random signals

In addition, the PEC (Pointing) block provides the line-of-sight error around the user-selected axis while the PEC (Position) additionally displays the contribution from 'pure' position errors and attitude error couplings on separate tabs.





**Figure 9-3: Final pointing error**

## 9.1 Pointing budget reports

PEET offers the possibility to export the output signals of the budgeting computation in a tabular format to an Excel report file. At least one error index must be defined in order to access this feature using `File - Create Report`. For each defined error index, a new report will be created in the output folder of the currently loaded pointing systems .peet folder.

Each Excel report file contains six sheets. One sheet containing some general information and five sheets for the various signal parts. The general information sheet contains some general data like the creation date of the report, the settings of the error index and the total pointing error.

The other sheets contain the output signal data. For each signal part (CRV, RV, Drift, Periodic and RP) a separate sheet is available, containing for each block the block ID, the block type and the equivalent mean and variance values of the signal part for each axis. Not all signal parts must be available for each block. Signal parts which are not available inside an output signal are marked with N/A.

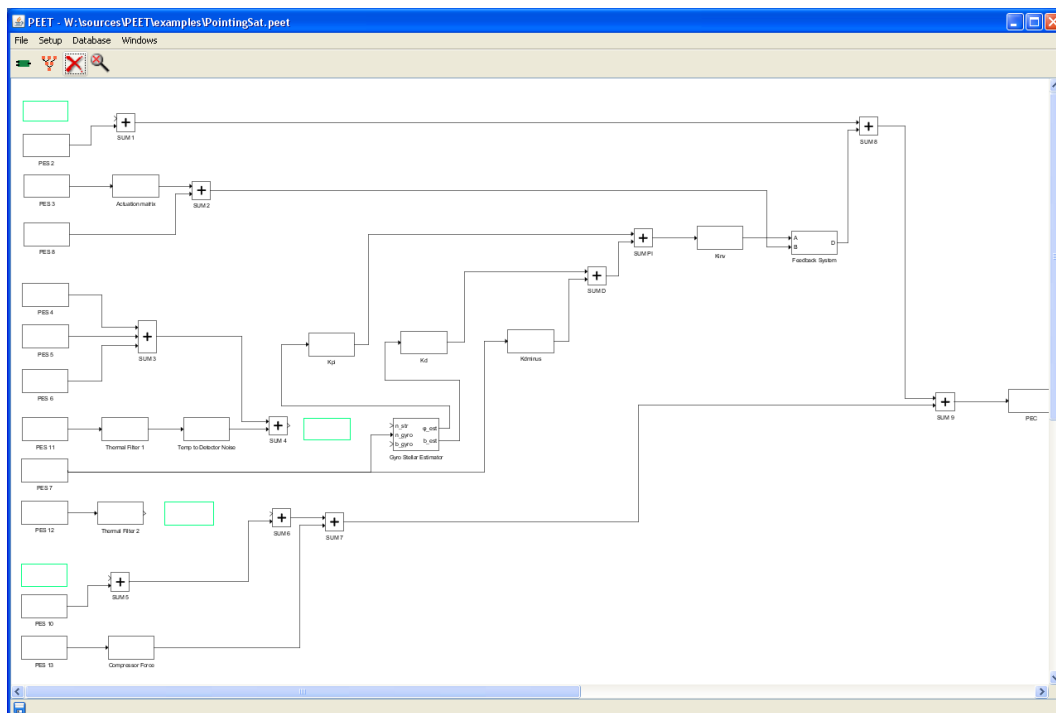
## 10 PointingSat Example

In this chapter a step-by-step example is given on how a pointing system is built up and how the pointing error computations are performed. The pointing system used in this example, is the PointingSat example defined in [RD1].

### 10.1 Building the pointing system

Before the error computations can be performed, the pointing system must be defined by adding blocks from the database to the pointing system, setting up the block parameters and by connecting the blocks. Adding blocks to the pointing system

Figure 10-1 shows the structure of PointingSat. Some blocks marked by green rectangles are missing and will be added step by step.

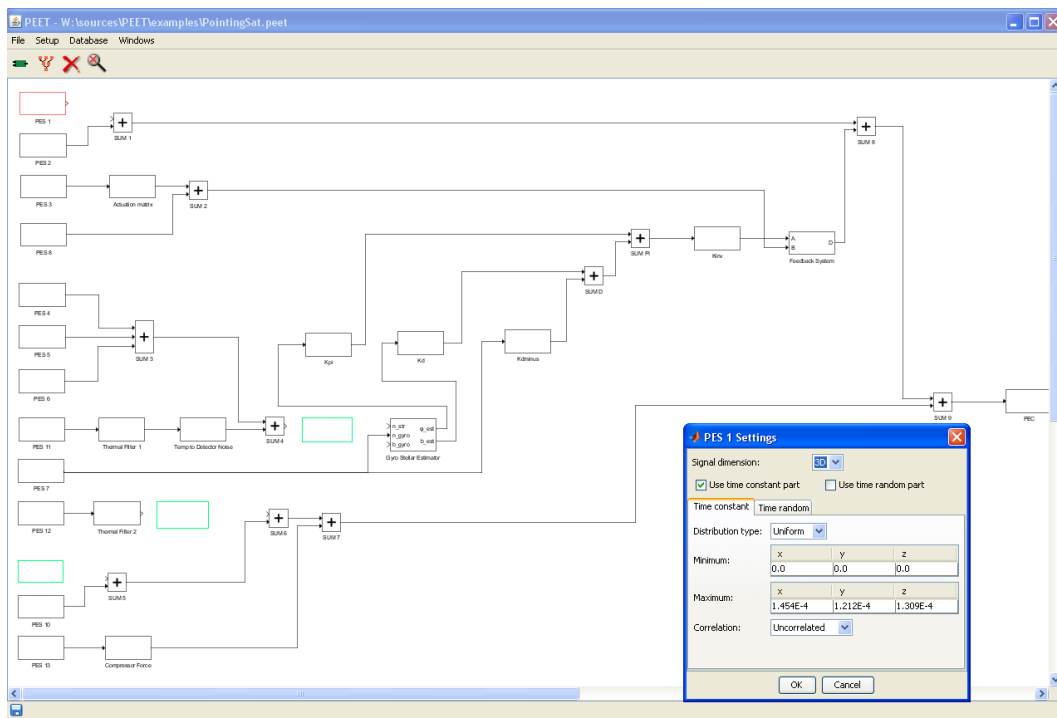


**Figure 10-1: PointingSat with some missing blocks**

The PointingSat example and all pointing systems in general must always contain a PEC block which serves as the final end block of the pointing system. The signal going into the PEC block is the final signal containing all the pointing error data of the whole pointing system.

Building up a pointing system requires the user to add blocks from the database to the pointing system. This is done similar to Simulink by simply dragging the required block type from the database window to the system window. The database window can be opened either by using the first button in the system view tool bar or by selecting Database - Show Block Database from the menu bar.

After the database window was opened, simply drag the PES block from the database window to the system window. A new PES block is now available in the system view window. Blocks inside the system view can be dragged in order to define the location of the blocks. Move the new block to the same location like the red block shown in Figure 10-2.



**Figure 10-2: Setting block parameters for the first PES**

Blocks can also be renamed. To rename a block, double click on the block name below the block. A small dialog will open into which the new block name can be entered. Block names must be unique inside a system view window, but they can have the same name, if they are in two different system views. More than one system view window is only available, if container blocks are used (see chapter 8.3 for details).

In this example the PES block is renamed to PES 1. Double click on the name below the PES block and enter PES 1 into the rename dialog. After pressing the OK button, the new name is used in the pointing system.

Most of the blocks must be configured with some parameters. For this reason, every configurable block type owns a block mask. This block mask can be opened by double clicking the block symbol inside the system view window.

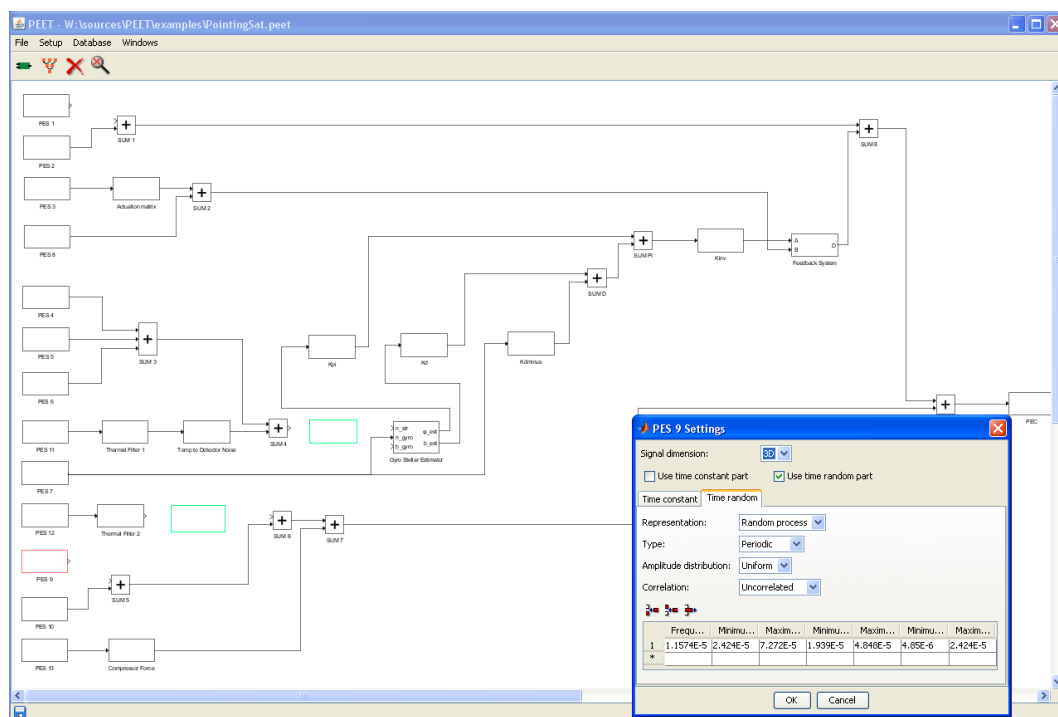
Double click on the PES 1 block. This will open the block mask for the PES 1 block. This block mask is shown in Figure 10-2. To configure the block, the user can now provide values for the parameters.

In this example, the error source PES 1 only provides a time constant pointing error. This can be defined by deselecting the check box labelled `Use time random part`. If the time random tab is now selected, the whole content is greyed out indicating that these

parameters are not used. Switch back to the time constant tab. Now set the distribution type to `Uniform`. This will enable the user to define all parameters required for a uniform distribution. In this case, minimum and maximum values for all three axes must be defined. For the minimum values, enter `[0.0, 0.0, 0.0]` and for the maximum values use `[1.454e-4, 1.212e-4, 1.309e-4]`. Set the correlation to `Uncorrelated`. The block is now correctly set up.

Now insert a second error source and rename it to PES 9. Move it to the position shown in Figure 10-3. Open the block mask for the new error source by double clicking the block symbol of PES 9. In this case, the error source will own a time random part. Deselect the time constant check box.

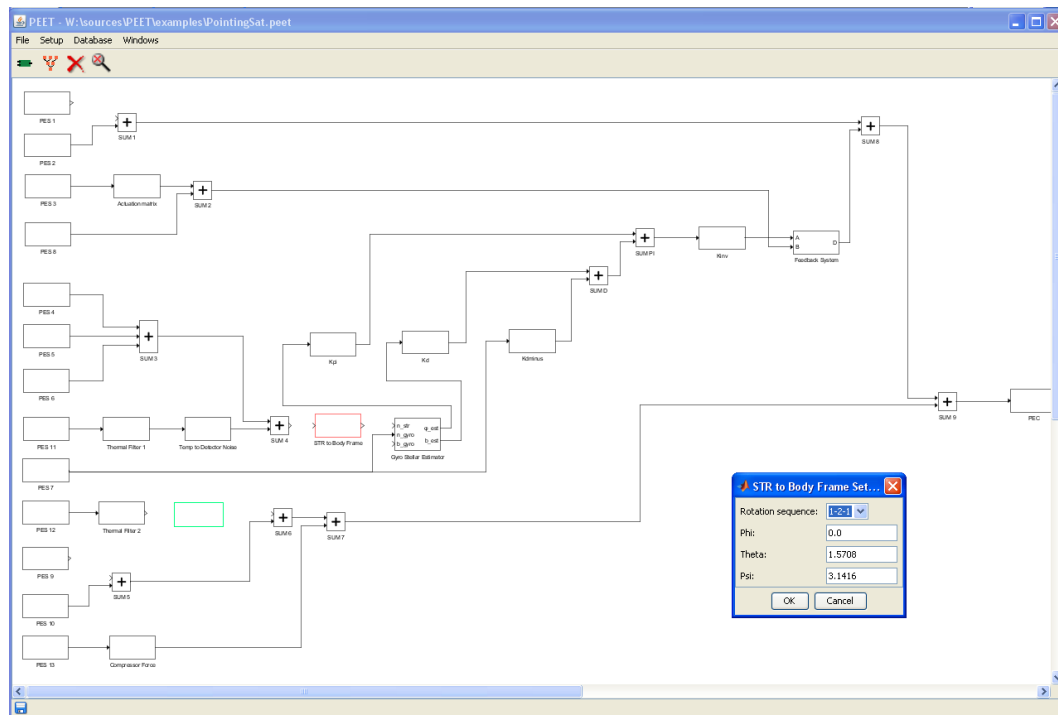
To configure the time random part, select the time random tab. Now set the representation to `Random process`, the type to `Periodic` and the amplitude distribution to `Uniform`. Set the correlation to `Uncorrelated`. Insert the values `[1.1574e-5, 2.424e-5, 7.272e-5, 1.939e-5, 4.848e-5, 4.85e-6, 2.424e-5]` into the first row of the table.



**Figure 10-3: Setting time random parameters**

In this case, the table contains only one row. It is also possible to add or remove rows by using the three icons to the upper left of the table.

Now all pointing error sources are added to the pointing system. But there are still missing some system transfers. In the next step, add a coordinate transformation by dragging the coordinate transformation block from the block database to the system view window. Rename it to `STR to Body Frame`.



**Figure 10-4: Setting block parameters for the coordinate transformation**

To configure the coordinate transformation block, open the block mask and select the rotation sequence 1-2-1 from the drop down menu. For the angles enter 0.0, 1.5708 and 3.1416. Angles are always defined in radians.

The second system transfer is represented by a static system block. Add a static system block from the database, rename it to Temp to Focal Point and open the block mask. Enter the values  $[4.315e-6, 5.624e-6, 5.769e-6]$  on the diagonal of the system matrix.

After all blocks are added to the pointing system, the system should look like in Figure 10-7. Blocks can be rearranged by dragging them in the system view window. The next step is to connect the blocks.

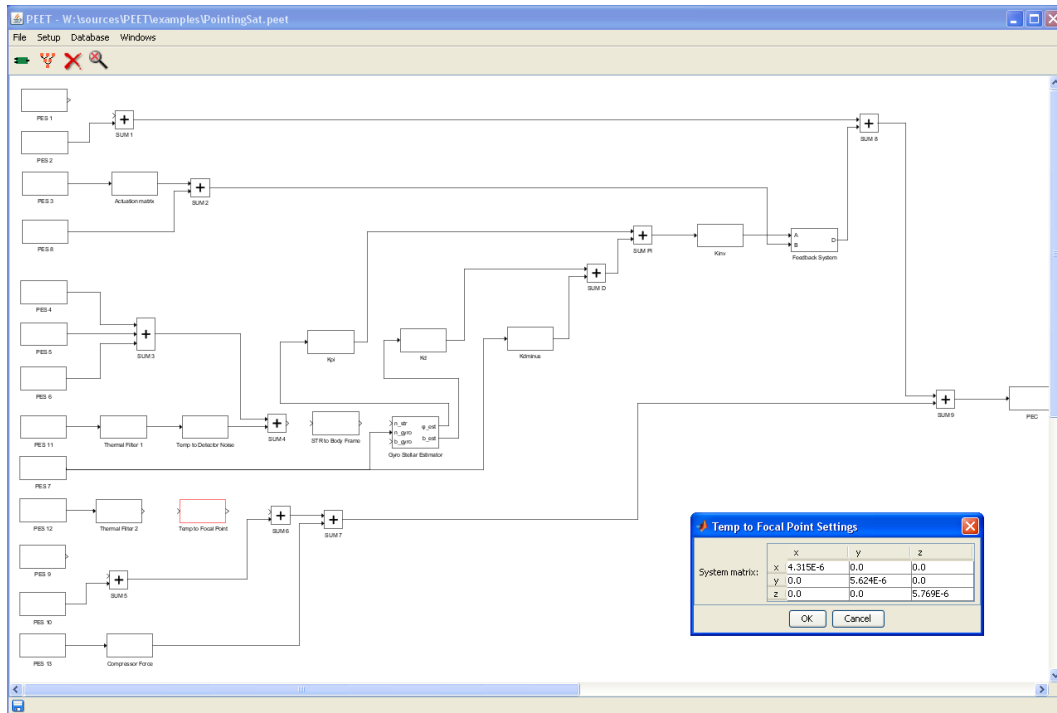


Figure 10-5: Setting block parameters for the static system

## 10.1.1 Connecting blocks

Connecting blocks is straight forward. All that has to be done is to select the source port and the destination port. The source port must always be a block output port and the destination port must always be an input port. No loops are allowed. Input block ports are always on the left site of the block symbol and output ports are always on the right site.

The order in which the ports are selected does not matter. In this case the output port of the PES 1 block is selected first. Move the mouse cursor near the output port of PES 1. The cursor will change to a plus sign. Select the port by clicking the left mouse button. A selected port is visualized with a red colour like shown in Figure 10-6. Now move the mouse cursor to the input port of the SUM 1 block until it changes to a plus sign. Click again on the left mouse button and a connection will be created between PES 1 and SUM 1.

Proceed with adding connections until all blocks are connected like in Figure 10-7. Now the pointing system is built up completely. The next step is to run the error computation and to analyse the results.

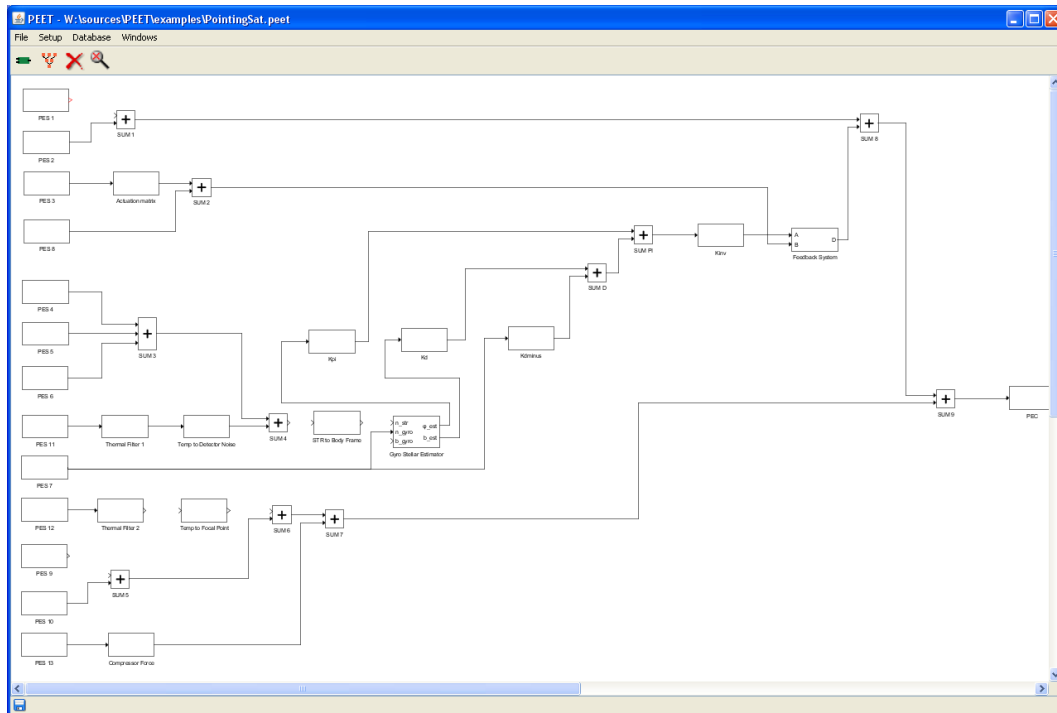


Figure 10-6: PES 1 block port selected

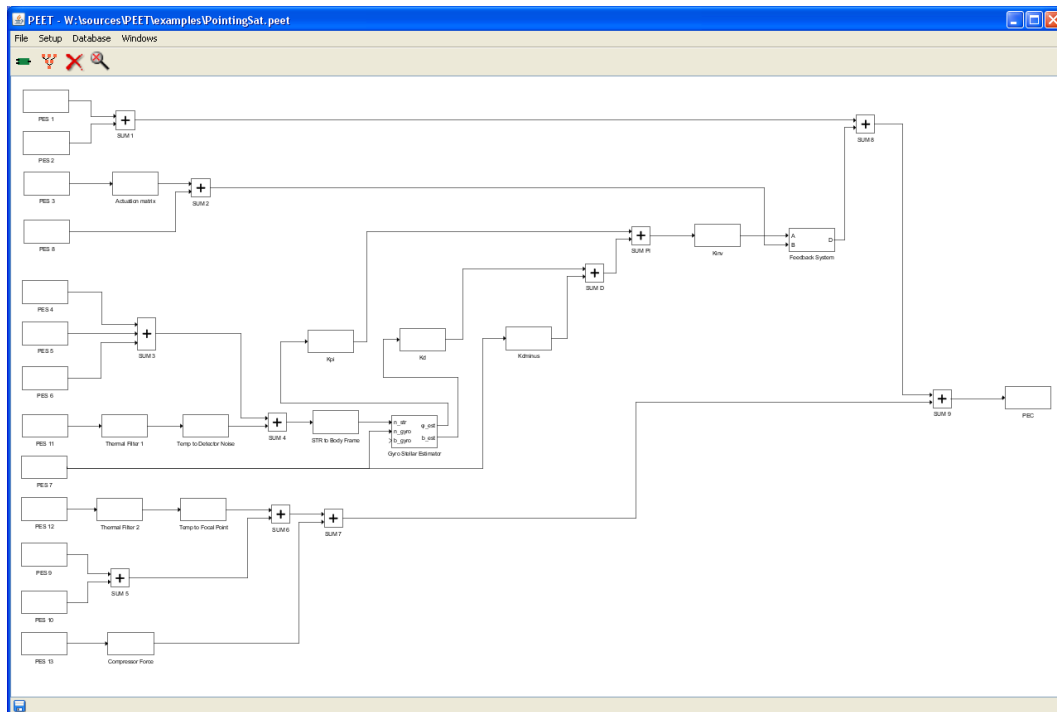


Figure 10-7: The final pointing system

## 10.1.2 Defining correlations between error sources

It is also possible to define correlations between error sources. This is done by selecting `Setup - Edit PES Correlations` from the menu. This will open the correlation manager dialog shown in Figure 10-8.

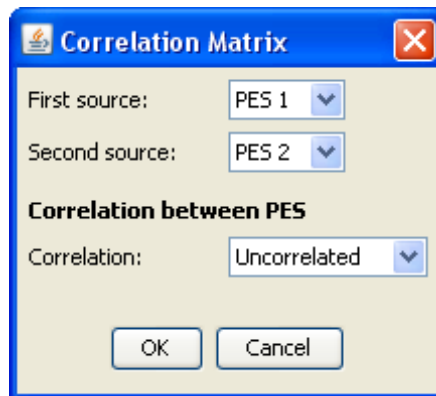


Figure 10-8: Correlation manager dialog

Using this dialog, the correlation between two error sources can be defined. The correlation can be set to either `Uncorrelated` or `Fully correlated`. In this example, the correlation between PES 1 and PES 2 is set to `Uncorrelated`. Simply click `Cancel` to close the dialog.

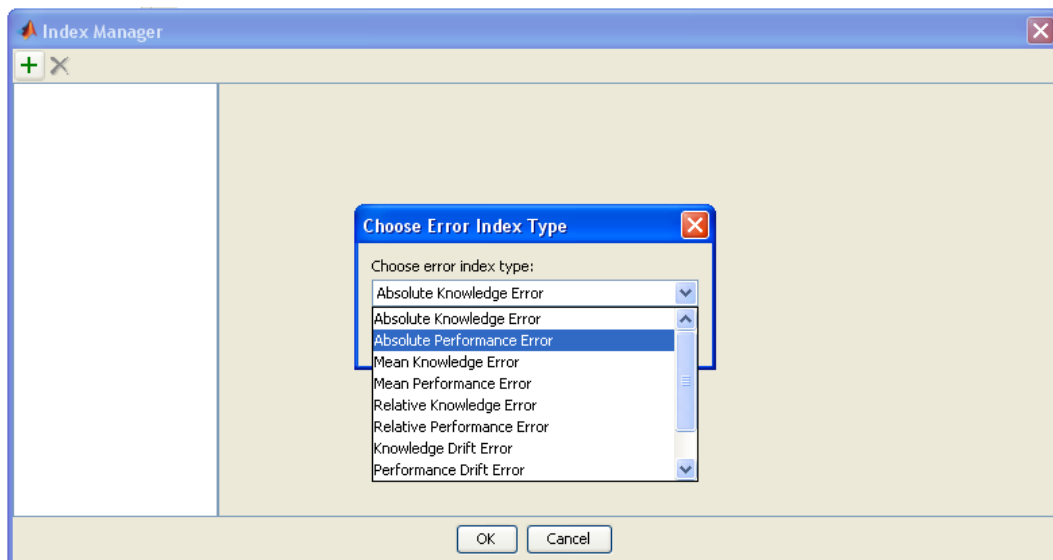
## 10.2 Computing pointing errors

After the pointing system has been defined, the error computations can be performed. To perform the error computations, some error indices must be created. Afterwards, the computation can be performed from the tree view window and the results can be inspected in the information section of the tree view window.

### 10.2.1 Creating error indices

Before running any computation, one or more error indices must be created. To create an error index, the error index manager must be opened. This is done by selecting `Setup - Edit Error Indices` from the menu bar of the system view window. The error index manager is shown in Figure 10-9.





**Figure 10-9: Error index manager**

At the beginning, no error indices are defined. To add an error index, click on the green plus sign. This will open a small dialog in which the type of the error index must be selected.

Select `Absolute Performance Error` and press the OK button. This will add a new error index to the index manager. The list of all defined error indices is located on the left side of the error index manager. Figure 10-10 shows the error index manager after the new error index was created. If the newly created error index is not selected in the index list, select it.

Selecting an error index will show its parameters in the index manager. These parameters may vary depending on the error index type. For this example, set the ID to `APE_ensemble`, the statistical interpretation to `Ensemble` and the confidence coefficient to `3.0`. Then confirm the index settings by pressing the OK button.

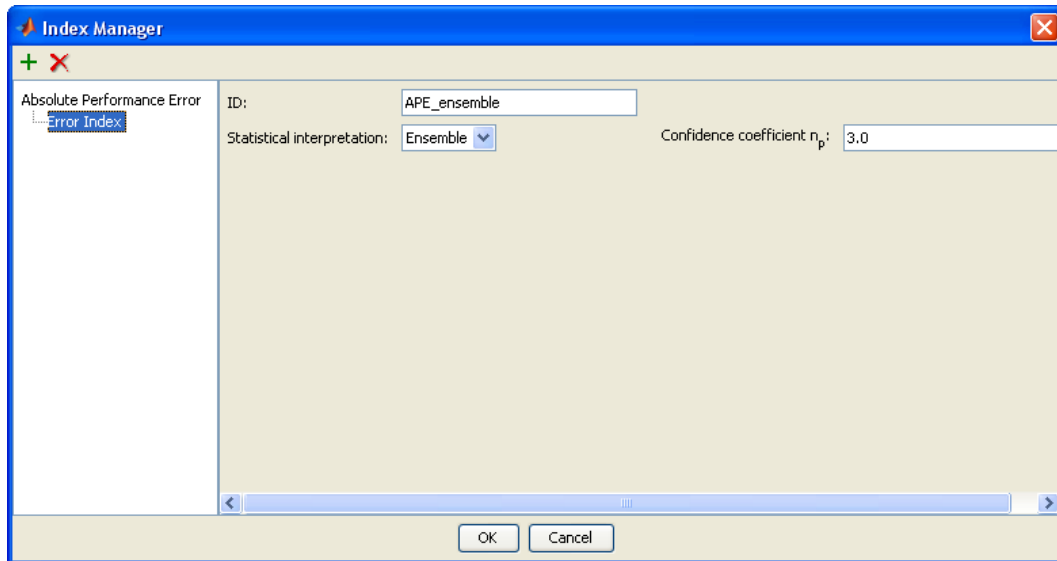


Figure 10-10: Error index settings

## 10.2.2 Perform error computation

After error indices are defined, they can be accessed in the tree view window (see Figure 10-11) using the drop down menu in the tool bar.

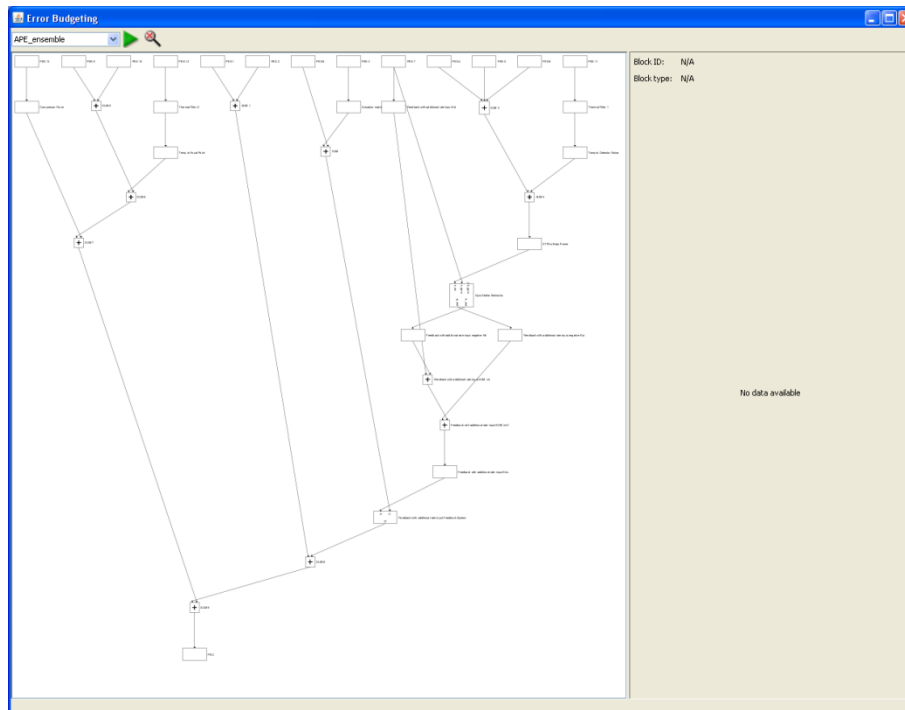


Figure 10-11: The tree view window

To run the computation, press the green arrow. The computation must be performed every time, the pointing system was modified. It will be performed automatically, if the error index has changed using the drop down menu. Because only one error index is defined in this example, only the green arrow can trigger the computation.

### 10.2.3 Analyse pointing errors

After the error computation has been performed, the results can be inspected. To inspect the input and output signals of a block, the associated block symbol must be selected in the tree. The signals can be analysed in the information section on the right site. Figure 10-12 gives an example for the signal data of the summation block SUM.

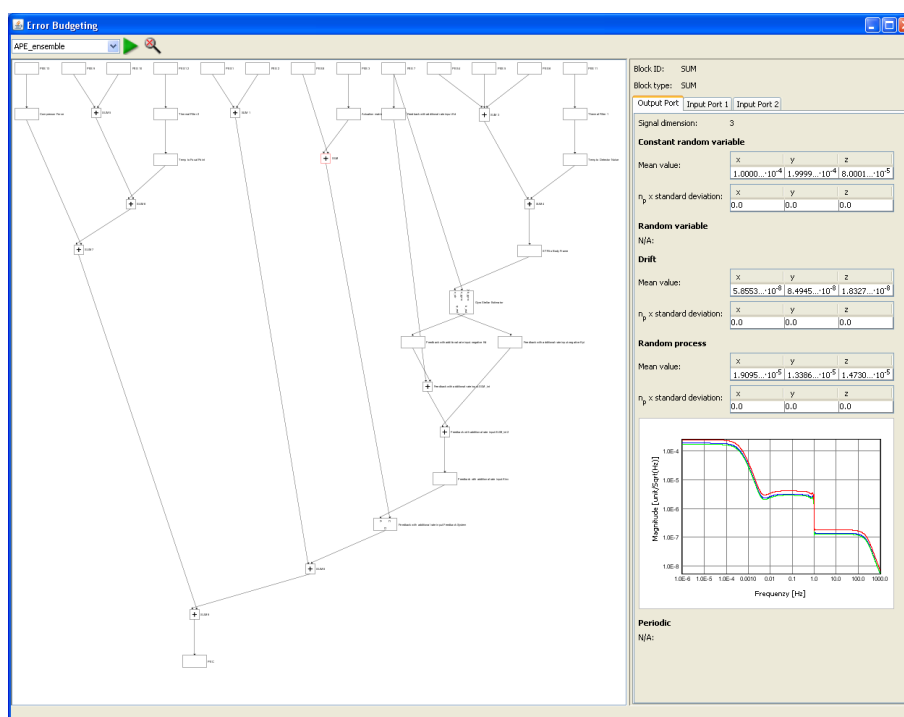
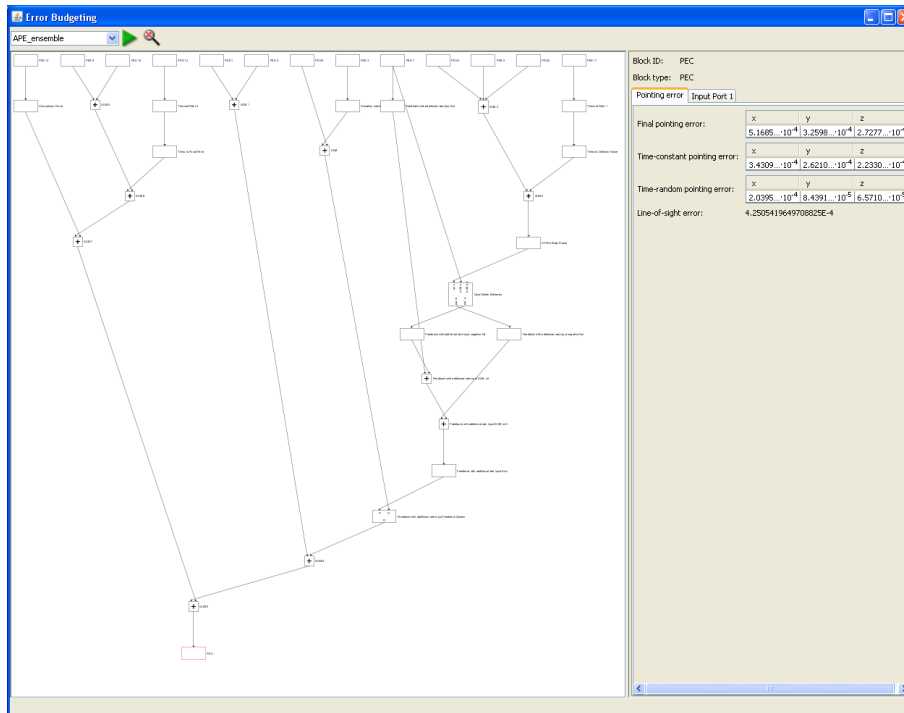


Figure 10-12: Inspect signals

Each signal consists of several signal components. Each signal component is listed in the information section. Most of the time, the signal components are vectors, but for the random process component, a PSD plot is shown. This plot is only a preview plot. It can be enlarged by double clicking on the preview.

Data of all incoming and outgoing signals can be examined by selecting the appropriate tab in the information section.

The PEC block provides an information section which is slightly different from the other block types (see Figure 10-13).



**Figure 10-13: Final pointing error**

In addition to the input signal data, first tab summarizes the total pointing error together with its time-random and time-constant contributions together with the line-of-sight error around the user-selected axis.