

Quick Installation Guide

47611-WG4

300Mbps Dual-Band 802.11n
Wireless Gigabit Router



1. Package Contents

Thank you for choosing Leviton 47611-WG4. Before installing the router, please verify the contents inside the package box.

Wireless Router



Quick Guide



CD-ROM



Power Adapter



Ethernet Cable



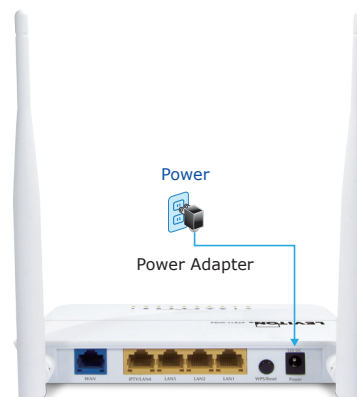
- 1 -



If there are any items missing, please contact Leviton immediately.

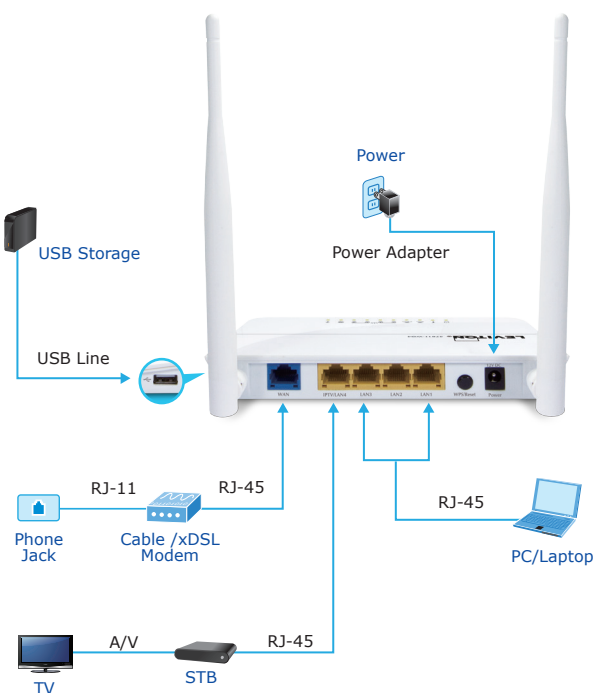
2. Hardware Installation

STEP 1: Connect the Power Adapter provided in the package to the 47611-WG4. The Power LED on the front panel shall turn on accordingly.



- 2 -

STEP 2: Follow the figure below to connect the network devices. It depends on your network environment to connect the WAN port to a Cable/xDSL modem, or the Ethernet directly in your place.



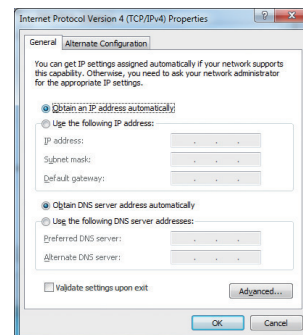
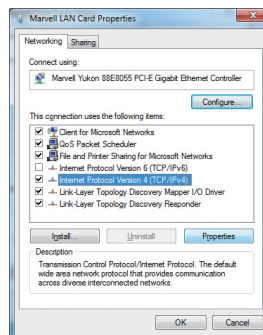
- 3 -

3. Network Configuration (Windows 7)

A computer with a wired Ethernet connection is required for the first-time configuration of the Wireless Router.

Set your computer to get an IP address from the Wireless Router:

1. Click **"Start"** button located at lower-left corner of the screen.
2. Click **"Control Panel"**.
3. Double click **"Network and Sharing Center"** icon.
4. Click **"Change adapter settings"**.
5. Double click **"Local Area Connection"** icon.
6. Select **"Internet Protocol Version 4 (TCP/IPv4)"** and click **"Properties"** button.
7. Select **"Obtain an IP address automatically"** and **"Obtain DNS server address automatically"**, then click **"OK"** button twice to save the configuration.



- 4 -

4. Enter into the Web Management

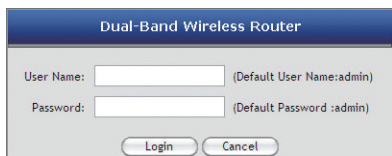
Default IP Address: **192.168.0.1**
Default User name: **admin**
Default Password: **admin**
Default SSID of 2.4G: **default_2.4G**
Default SSID of 5G: **default_5G**
Default Wireless Encryption Type: **None**

STEP 1: The Web management allows you to access and manage the 47611-WG4 easily. Launch the Web browser and enter the default IP address **http://192.168.0.1**



STEP 2: When you enter into the Web User Interface, please enter the User Name and Password in the login window. The default User name and Password are both "admin".

Then click "Login" button to continue.



- 5 -

FURTHER INFORMATION:

The above steps introduce simple installations and configurations for 47611-WG4. For further configurations of Wireless Dual Band, WAN, LAN, Firewall, Virtual Server, DMZ, and DDNS etc, please refer to the user manual in the CD-ROM. If you have further questions, please contact Leviton Tech Support at 800.824.3005.

Federal Communication Commission Interference Statement

This equipment has been tested and found to comply with the limits for a Class B digital device, pursuant to Part 15 of FCC Rules. These limits are designed to provide reasonable protection against harmful interference in a residential installation. This equipment generates uses and can radiate radio frequency energy and, if not installed and used in accordance with the instructions, may cause harmful interference to radio communications. However, there is no guarantee that interference will not occur in a particular installation. If this equipment does cause harmful interference to radio or television reception, which can be determined by turning the equipment off and on, the user is encouraged to try to correct the interference by one or more of the following measures:

1. Reorient or relocate the receiving antenna.
2. Increase the separation between the equipment and receiver.
3. Connect the equipment into an outlet on a circuit different from that to which the receiver is connected.
4. Consult the dealer or an experienced radio technician for help.

FCC and IC Statement:

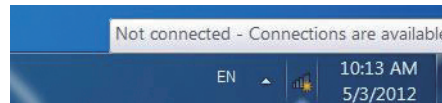
To assure continued compliance, (example-use only shielded interface cables when connecting to computer or peripheral devices) any changes or modifications not expressly approved by the party responsible for compliance could void the user's authority to operate the equipment.

- 7 -

STEP 3: Once the corresponding Internet connection type is chosen, click **OK** button to save and make the changes take effect.

5. Wireless Network Connection

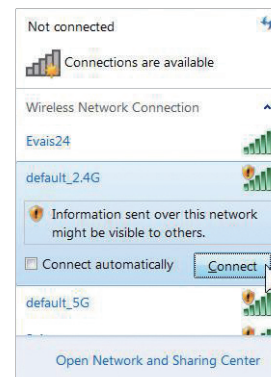
STEP 1: Right-Click on the **network icon** displayed in the system tray.



STEP 2: Highlight the wireless network (SSID) you want to connect and click **Connect** button.

STEP 3: Enter the **encryption key** of 47611-WG4 if necessary.

You have already finished the configuration of the 47611-WG4. Now you can use your iPhone, iPad, laptop, and any other Wi-Fi devices to connect with it wirelessly and start surfing the Internet.



- 6 -

This device complies with Part 15 of the FCC Rules and Industry Canada licence-exempt RSS standard(s). Operation is subject to the Following two conditions:

- (1) This device may not cause harmful interference
- (2) This Device must accept any interference received, including interference that may cause undesired operation.

Le présent appareil est conforme aux CNR d'Industrie Canada applicables aux appareils radio exempts de licence. L'exploitation est autorisée aux deux conditions suivantes : (1) l'appareil ne doit pas produire de brouillage, et (2) l'utilisateur de l'appareil doit accepter tout brouillage radioélectrique subi, même si le brouillage est susceptible d'en compromettre le fonctionnement.

Any changes or modifications not expressly approved by the party responsible for compliance could void the user's authority to operate the equipment.

Canadian Department of Communications

The device meets the exemption from the routine evaluation limits in section 2.5 of RSS 102 and compliance with RSS-102 RF exposure, users can obtain Canadian information on RF exposure and compliance.

Le dispositif rencontre l'exemption des limites courantes d'évaluation dans la section 2.5 de RSS 102 et la conformité à l'exposition de RSS-102 rf, utilisateurs peut obtenir l'information canadienne sur l'exposition et la conformité de rf.

Federal Communication Commission (FCC) Radiation Exposure Statement

This equipment complies with FCC radiation exposure set forth for an uncontrolled environment. In order to avoid the possibility of exceeding the FCC radio frequency exposure limits, human proximity to the antenna shall not be less than 20 cm (8 inches) during normal operation.

2011-E50280-010



- 8 -