

# wanscam

## **Wireless/Wired Network IP Camera**

### **Night Vision & Remote Operation**

### ***User Manual***

# **Thank you for buying our IP camera**

**Wanscam AJ Series IP Camera products are designed and equipped for local and remote network video surveillance system, including wired IP bullet camera, wireless IP bullet camera, IP IR dome camera, IP IR waterproof camera, IP Pan/Tilt/Zoom Camera etc. We adopt high performance chip to ensure high quality media processor which processes audio and video collection, compression and transmission. Standard M-JPEG compression format ensures clear and streaming video performance. It enables users to view live video via IE6.0, IE7.0, IE8.0, Firefox, Google browser or other standard browser.**

**Wanscam AJ series IP Camera products are applicable for big, medium-sized and small enterprises, chain store, factory, home and all kinds of spots where remote network video transmission and control supposed to be installed, they are easy to be installed and operated. Before the installation of the IP camera, please check if your product accessories in the package are complete**

## **Packing List**

**Untie the pack and check the items contained against the following list:**

- **IP Camera X1**
- **Wi-Fi Antenna X1 (only available for wireless model)**
- **Warranty Card X1**
- **DC Power Supply X1**
- **CD X1**
- **Certificate of Quality X1**
- **Mounting bracket X1**

**NOTE: Please contact us immediately if anything damaged or short of contents.**

# Table of CONTENTS

1. Product Introduction .....	3
1.1. Safety Introduction .....	3
1.2. Product Specifications.....	4
1.3. System Requirements.....	5
1.4. Product Views.....	5
1.4.1 Front View.....	5
1.4.2 Interface View.....	5
1.5. Hardware Installation.....	6
1.6. Software Installation.....	6
2. Software Operation.....	6
2.1. Search Tool Software.....	7
2.1.1. Search The IP address of the Camera.....	7
2.1.2. Configuration of the Network.....	7
3. Real-Time Video Demonstration.....	9
3.1. Camera Login.....	9
3.2. View via IE Browser.....	10
3.3. View via Safari, Firefox, Google Browser. ....	13
3.4. Main Menu interface Introduction.....	14
3.5. Administer Setting Instruction.....	15
3.5.1. Multi-Device Settings.....	16
3.5.2. Basic Network Settings.....	17
3.5.3. Wireless Settings.....	18
3.5.4. ADSL Settings.....	19
3.5.5. Dynamic DNS Settings.....	19
3.5.5.1. DDNS Setting .....	22
3.5.5.2. Port Forwarding Settings.....	23
3.5.5.3. DDNS Register.....	25
3.5.6. Email and FTP Service Settings.....	29
3.5.7. Alarm Service Settings.....	29
3.5.8. Reset/Firmware Upgrade Settings.....	30
3.5.9. Restore Factory Settings.....	31
3.5.10 Reboot Equipment.....	31
4. Warranty.....	32

# **1. Product Introduction**

## **1.1 Safety Instructions**

**(1). Use the proper power source.**

Do not use this product with a power source that supplies more than the specified Voltage (100-240V AC).

**(2). Never insert anything metallic into the camera.**

Inserting metal object into the camera can be a source of dangerous electric shock.

**(3). Do not operate in wet or dusty environment.**

Avoid places like a damp basement or dusty hallway.

**(4). Do not attempt to disassemble the camera.**

You may be subjected to severe electrical shock if you attempt to take apart the camera while the camera is connected to its power source. If there are any unusual sounds or smells coming from the camera, unplug it immediately and contact Customer Service.

**(5). Handle the camera carefully**

Dropping the camera on any hard surface may cause a malfunction. If the camera does not work properly due to physical damage, please contact Customer Service for repair or exchange.

**(6). Apply to FCC and CE Rule**

This device complies with part 15 of the FCC and CE Rules. Operation is subject to the following two conditions:

- 1: This device may not cause harmful interference.
- 2: This device must accept any interference received, including interference that may cause undesired operation.

Any changes or modifications not expressly approved by the party responsible for compliance could void the user's authority to operate the equipment. This equipment complies with FCC and CE radiation exposure limits set forth for uncontrolled environment. This equipment should be installed and operated with minimum distance 20 cm between the radiator & your body.

This transmitter must not be co-located or operating in conjunction with any other antenna or transmitter.

## **1.2. Product Specifications**

\*- Adopt high Performance, strong function media processor 32Bit RSIC

\*- High sensor CMOS

\*-Adopt optimized MJPEG video compression algorithm, realize high-definition images transmission in narrow bandwidth;

\*-Maximum support 15 users viewing at the same time, no limit for users if using forwarder Server function;

- \*- Built in Web Server, convenient for users to use standard browse to realize the real time monitoring and setting administration;
- \*-Support WIFI: 802. 11b/g wireless networking;
- \*-Support remote system update;
- \*-Support DDNS analysis, support LAN & Internet (ADSL,Cable Modem)
- \*-Support variety of network protocol: TCP/IP, UDP, SMTP, PPPoE, Dynamic DNS, DNS Client, SNTP, BOOTP, DHCP, FTP, SNMP, WIFI/802. 11b/g
- \*-Parts of modes products support one/ two way audio, talkback;
- \*-Support motion detection alarm function (area & sensitivity Configurable);
- \*-Support image snapshot
- \*-Abnormal automatic recovery function, auto reconnection available when network Interruption occurred.
- \*-Dynamic alarm function, alarm time-schedule configurable.

### 1.3. System Requirements

CPU:	2.06GHZ or above
Memory:	256M or above
Network Card:	10M or above
Display Card:	64M or above
Operating System:	Windows XP/Vista/Windows 7 (32 bit)
Hard Disk Drive:	No Maximum Storage Requirement
Internet Explorer:	Version 5.0 or above
DirectX:	Version 8.0 or above
Audio Card:	PC must have microphone and speaker connected and configured for 2-Way audio play.
Network Protocol:	TCP/IP, UDP, SMTP, PPPoE, Dynamic DNS, DNS Client, SNTP, BOOTP, FTP, SNMP, Wifi (802.11 b/g)

### 1.4. Product Views

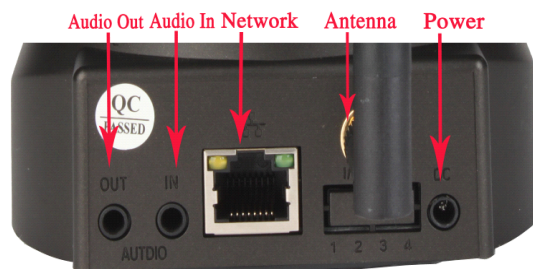
#### 1.4.1 Front View



- 1. Built-in Antenna
- 2. Lens
- 3. Ring of LED Bulbs
- 4. Light Sensor
- 5. Microphone
- 6. Network Indicator Light
- 7. Speaker

**Figure 1.1**

### 1.4.2 Interface View



Interface of C198



Interface of Waterproof Series Cameras

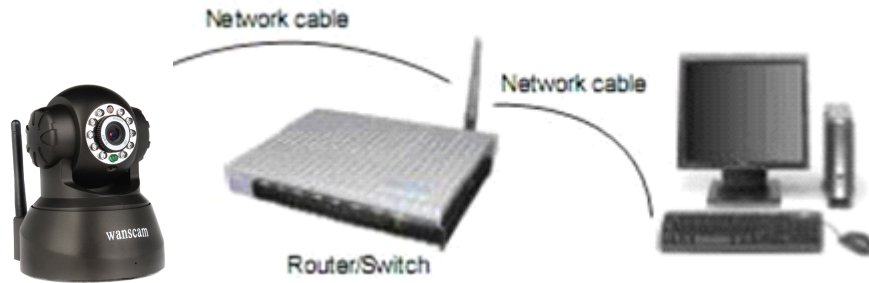
**Figure 1.2**

- 1: Audio Out , 2: Audio In
- 3: Ethernet interface: RJ-45 interface. Power Supply Light: constant on after power up
- Network light: constant sparkle after power up data transmission.
- 4: Antenna:
- 5: Power input interface: connect direct current 5V Power

## 1.5 Hardware Installation

Follow the steps below to set up your camera hardware. Make sure to follow each step carefully to ensure that the camera operates properly

1. Install the Wi-Fi antenna (For wireless model) .
2. Plug the power adaptor into camera
3. Plug the network cable into camera, the other side to the router/switch
4. It takes approx 30 seconds to boot up the camera, then you will find the IP address from "Search Tool" (Figure: 1.8)
5. When the power on and network cable connected, the green led of the real panel will keep on, The yellow led will keep flash.




**Figure 1.3**

## 1.6 Software Installation

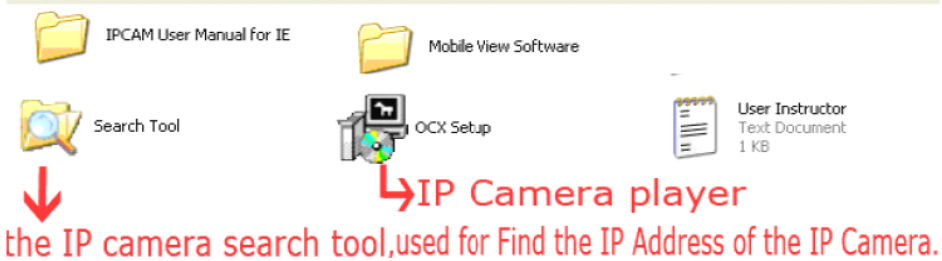


**Figure 1.4**

**Open the CD Install the follow software:**

1. **ActiveX:** Click “OCX setup”—“Next”—“Install”—“Finish”.
2. **Search Tool:** Open the CD, click  Search Tool, The Search Tool will run automatically.( No need to install. You can copy this software to your desktop.)

### The Data in the CD



**Figure 1.5**

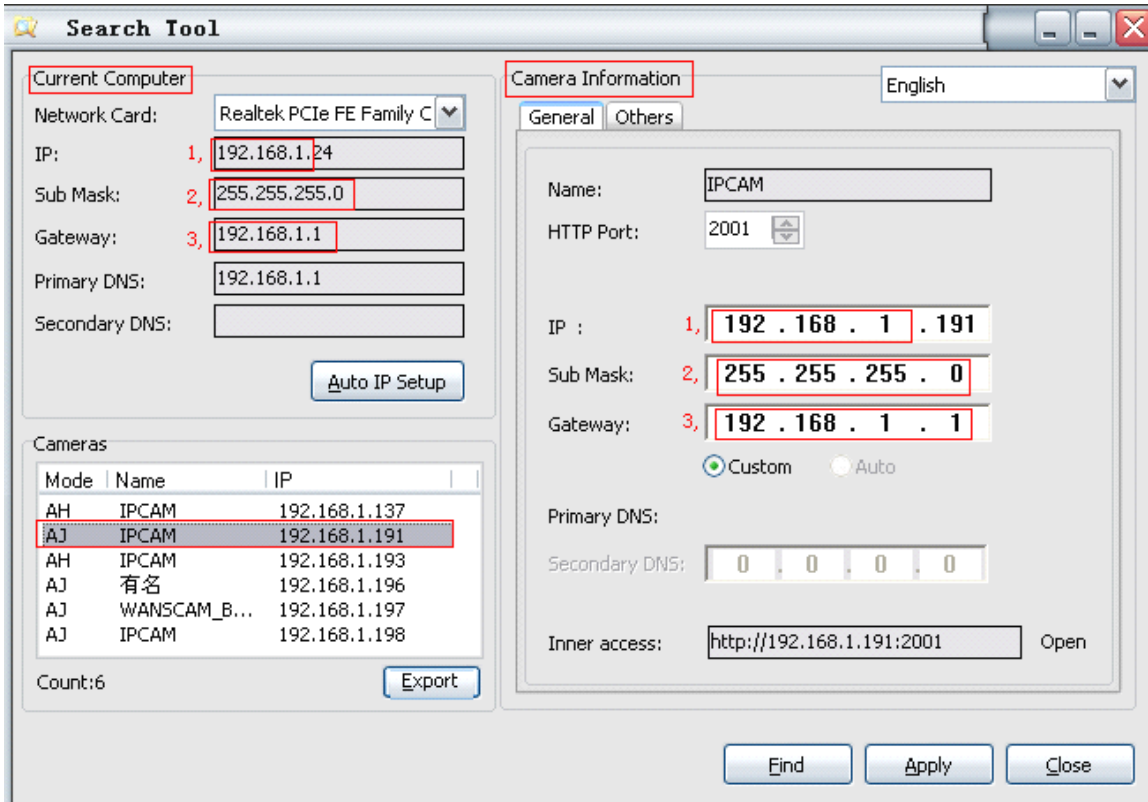
## 2. Software operation

### 2.1 Search Tool Software

#### 2.1.1 Search the IP address of the camera.

When the device has been mounted properly, you can double click the icon

 " run this IP address search tool.



**Search Tool**

**Current Computer**

Network Card: Realtek PCIe FE Family C

IP: 1, 192.168.1.24

Sub Mask: 2, 255.255.255.0

Gateway: 3, 192.168.1.1

Primary DNS: 192.168.1.1

Secondary DNS:

Auto IP Setup

**Cameras**

Mode	Name	IP
AH	IPCAM	192.168.1.137
AJ	IPCAM	192.168.1.191
AH	IPCAM	192.168.1.193
AJ	有名	192.168.1.196
AJ	WANSCAM_B...	192.168.1.197
AJ	IPCAM	192.168.1.198

Count:6

Export

**Camera Information**

English

General Others

Name: IPCAM

HTTP Port: 2001

IP : 1, 192 . 168 . 1 . 191

Sub Mask: 2, 255 . 255 . 255 . 0

Gateway: 3, 192 . 168 . 1 . 1

☒ Custom ☐ Auto

Primary DNS:

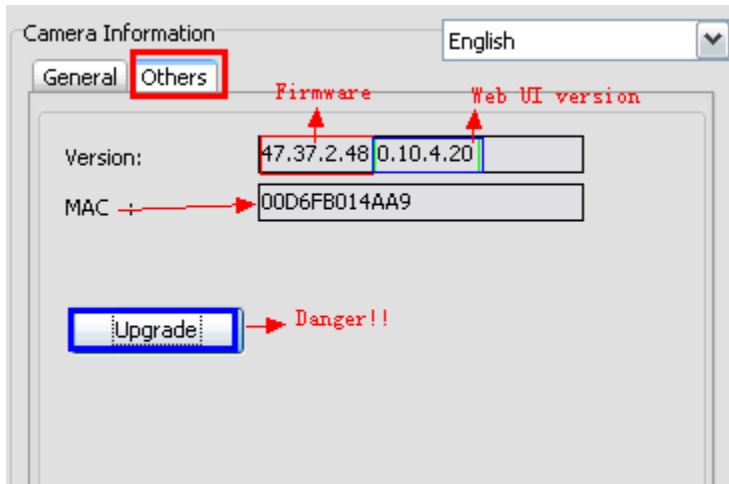
Secondary DNS: 0 . 0 . 0 . 0

Inner access: http://192.168.1.191:2001 Open

Find Apply Close

Figure 2.1





**Note:** The software searches IP Servers automatically over LAN.

There are 2 cases:

1. No IP Cameras found within LAN. After about 1 minute search, the Equipments List Field not show the IP address.
2. IP Cameras have been installed within LAN. All the IP Cameras will be listed and the total number is displayed in the Equipments list field as shown in Figure 2.1

**Note:**

1. **Current Computer** indicates the Computer's IP Address information.
2. **Equipment information** indicates the IP camera's IP Address information.
3. If you find that the camera's **"Subnet Mask", "Gateway", "DNS Server"** is not as some as your current computer's. You need try to change the camra's IP address. **Make sure the "Subnet Mask", "Gateway", "DNS Server" is the same as your router's or your current computer's.**
4. If you don't know how to configure your camera's IP address. You can click " Update" button. The Search Tool software can help you configure a usable IP camera automatically.

## 2.1.2 Configuration of the Network

Once your camera's IP address' **Subnet Mask, Gateway, DNS Server** is the same as your PC or router, you need configure the camera's **Network** parameter manually.

**IP address:** Fill in the IP address assigned and make sure it is in the same subnet as the **Gateway**, and the subnet should be the same as your computer or router. (i.e. the first three sections are the same)

**Subnet Mask:** The default subnet mask of the equipment is: 255.255.255.0. You can find the subnet mask from your PC or router.

**Gateway:** Make sure it is in the same subnet with PC's IP address .Here gateway is the LAN IP of your router.

**Primary DNS:** IP address of IPS network provider. You can also set it as the same as the Gateway.

**NOTE:** You can find out the **Subnet Mask, Gateway, Primary DNS** of your PC from the "Search Tool" software.

**Http Port:** LAN port assigned for the equipment, default is 99. You can change the port number to any one you want such as : 98,211,9999 etc.

The screenshot shows the 'Search Tool' window with two main sections: 'Current Computer' and 'Camera Information'.

**Current Computer:**

- Network Card: Realtek PCIe FE Family C
- IP: 192.168.1.24
- Sub Mask: 255.255.255.0
- Gateway: 192.168.1.1
- Primary DNS: 192.168.1.1
- Secondary DNS: (empty)
- Auto IP Setup button

**Cameras:**

Mode	Name	IP
AH	IPCAME	192.168.1.137
AJ	JWOOO4	192.168.1.190
AJ	IPCAME	192.168.1.191
AH	IPCAME	192.168.1.193
AJ	有名	192.168.1.196

Count: 7 Export button

**Camera Information:**

Language: English

General Others

Name: IPCAME

HTTP Port: 2001

Attention: Confirm that the numbers are same!

IP : 192 . 168 . 1 . 191

Sub Mask: 255 . 255 . 255 . 0

Gateway: 192 . 168 . 1 . 1

☒ Custom ☐ Auto

Primary DNS:

Secondary DNS: 0 . 0 . 0 . 0

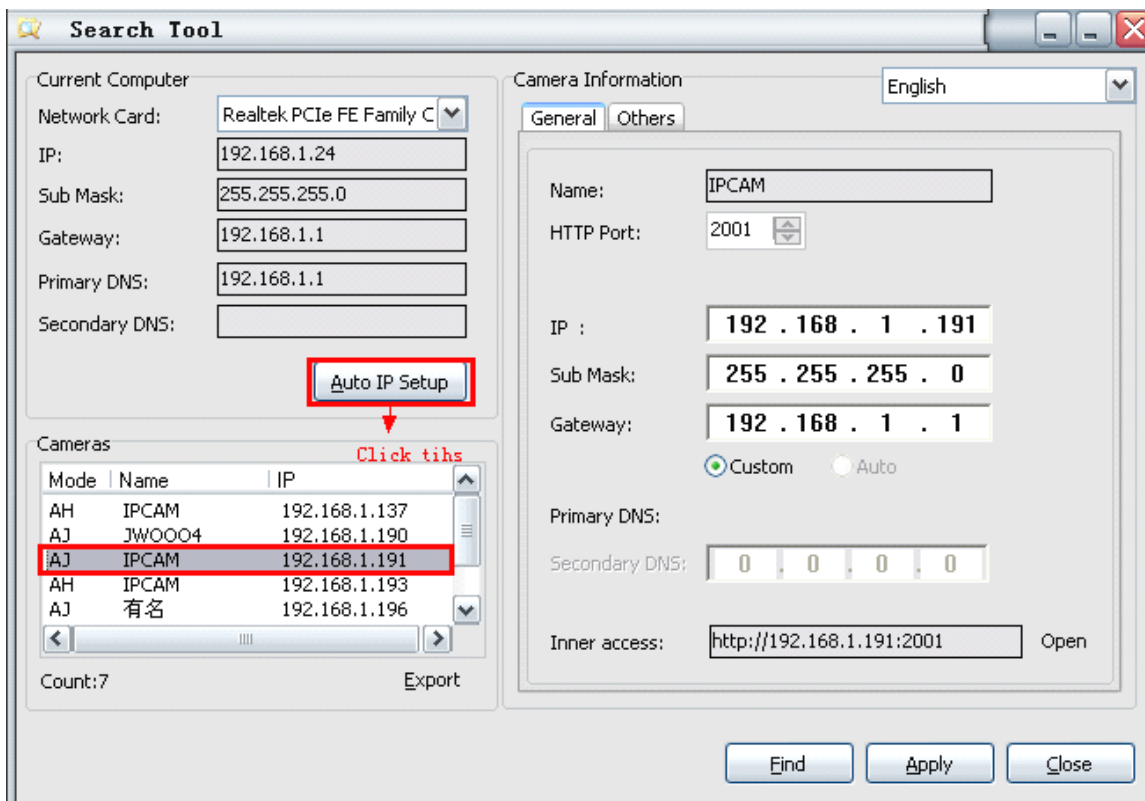
Inner access: http://192.168.1.191:2001 Open button

Find Apply Close buttons

Red annotations: A red arrow points from the text 'Click this to login the camera.' to the selected row in the 'Cameras' table. Another red arrow points from the text 'Or click open' to the 'Open' button in the 'Camera Information' section.

**Figure 2.2**

**Change the camera information:** If necessary (the numbers are not the same), you need to change the camera information, **Port, IP, or Gateway**. There are two ways to change them.



**Figure 2.3**

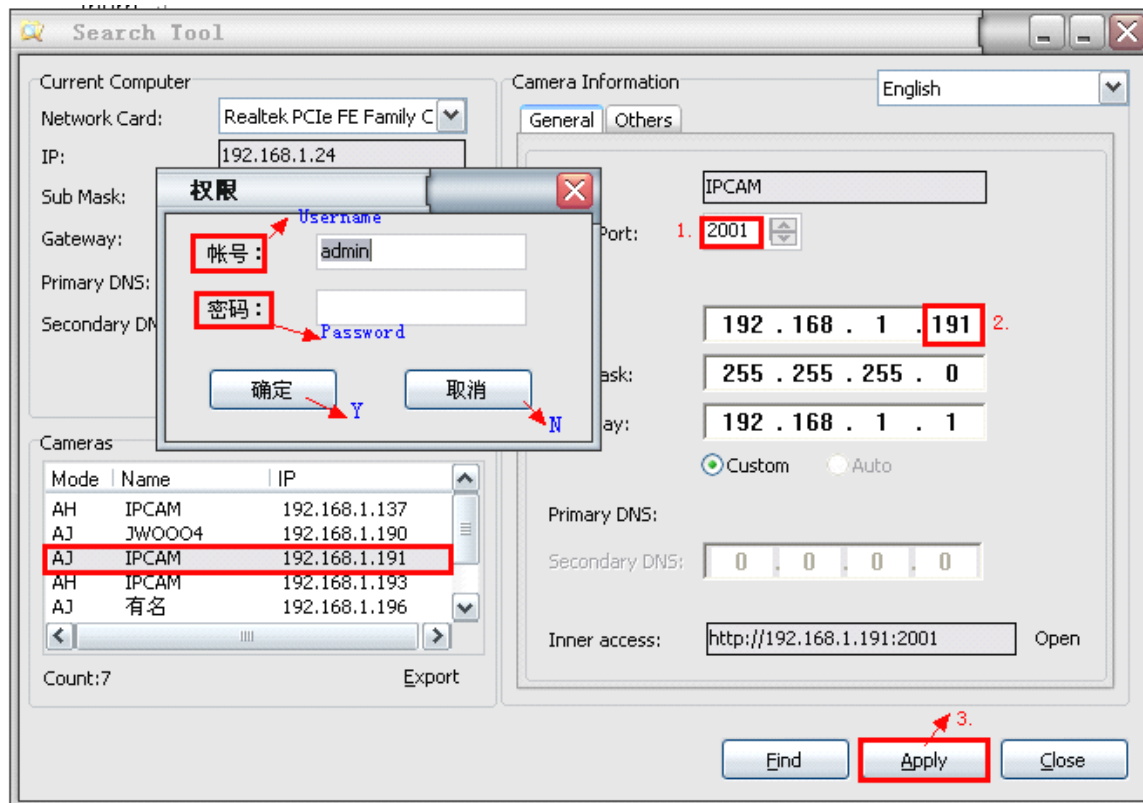


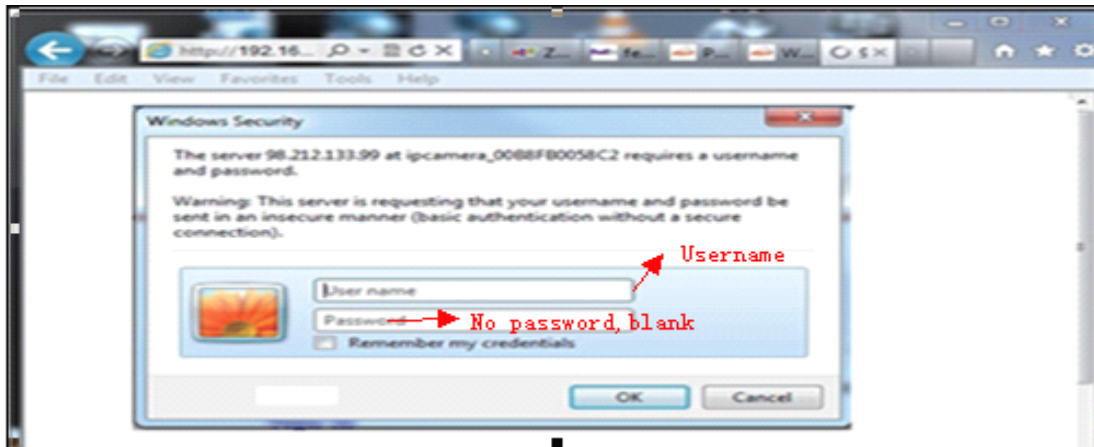
Figure 2.4

## 3: Real-time Video Demonstration.

### 3.1. Camera Login:

You can access the camera through **IP Camera Tool** or **IE, Firefox, Safari, Google Chrome or other standard browser** directly.

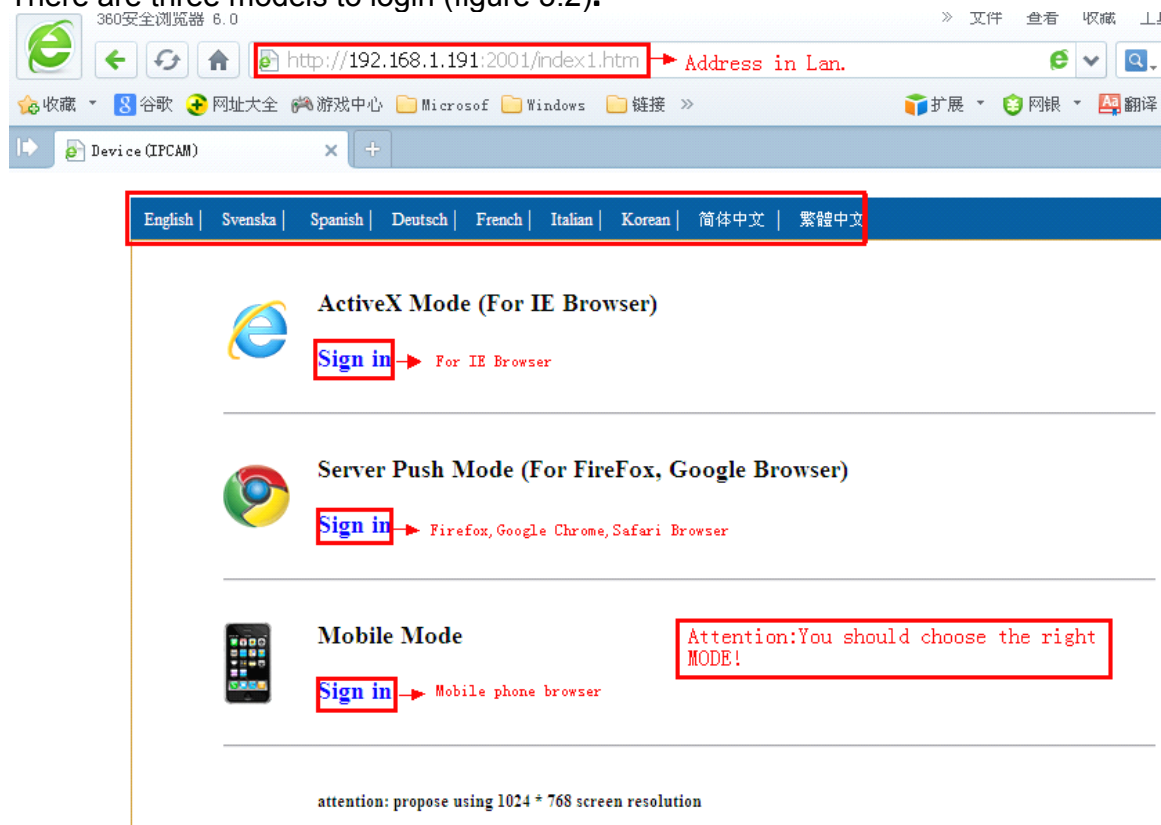
1. Double click the IP address of the IP Camera listed (Figure 2.1). The default browser you use will run automatically and come to the camera login interface. (Figure 3.1)
2. To access the camera by IE Browser directly, just type the camera's IP address, for example, if the camera's IP address is 192.168.1.99:99:



**Figure 3.1**

**Default username: admin**  
**Password: no password.**

Input the correct user name and password, the Sign In interface will pop-up. There are three models to login (figure 3.2).



**Figure 3.2**

- (1) Active Mode (For IE Browser): available in IE6.0 or above explorer
- (2) "Server Push Mode": available in Firefox, Safari, and Google Chrome browser.
- (3) "Snap Motion Mode": available in Mobile phone

## 3.2. View via IE Browser.

Choose **Active Mode (For IE Browser)**, and sign in.

The first time login the camera, maybe get ActiveX prompt as the picture above, please click the prompt and choose **Run Add-on**, refresh and login the camera again, then will see live video, details as below:

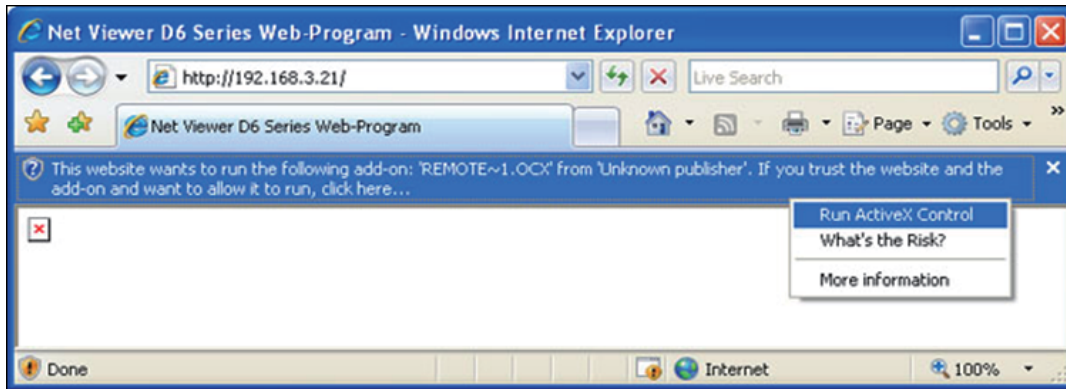


Figure 3.3 Windows XP system

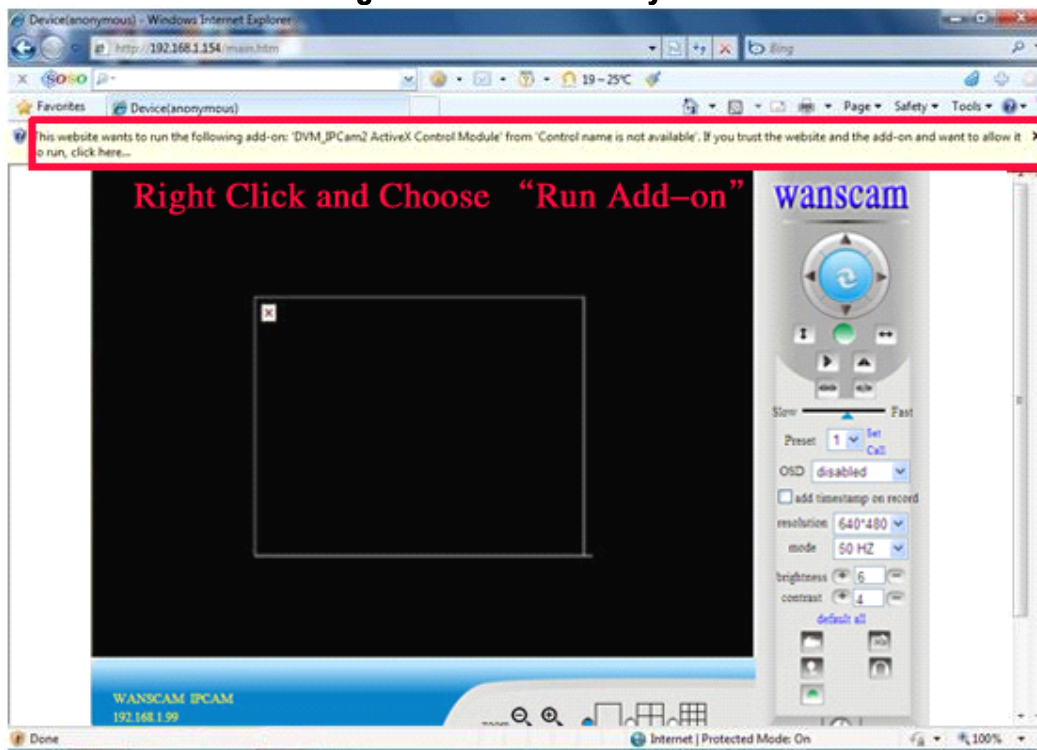
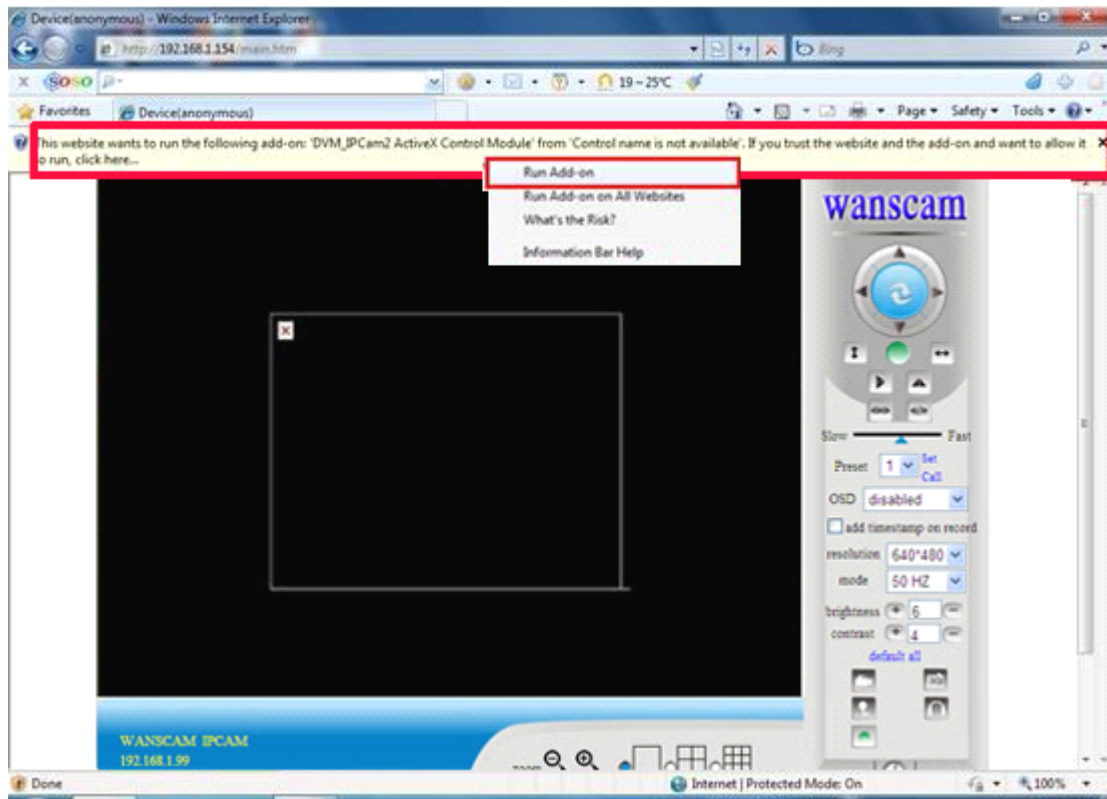


Figure 3.4 Win7 System



**Figure 3.5**

**Note:** If there is still no live video after run ActiveX, please try to enable the ActiveX options of IE security settings, please do the follow steps:

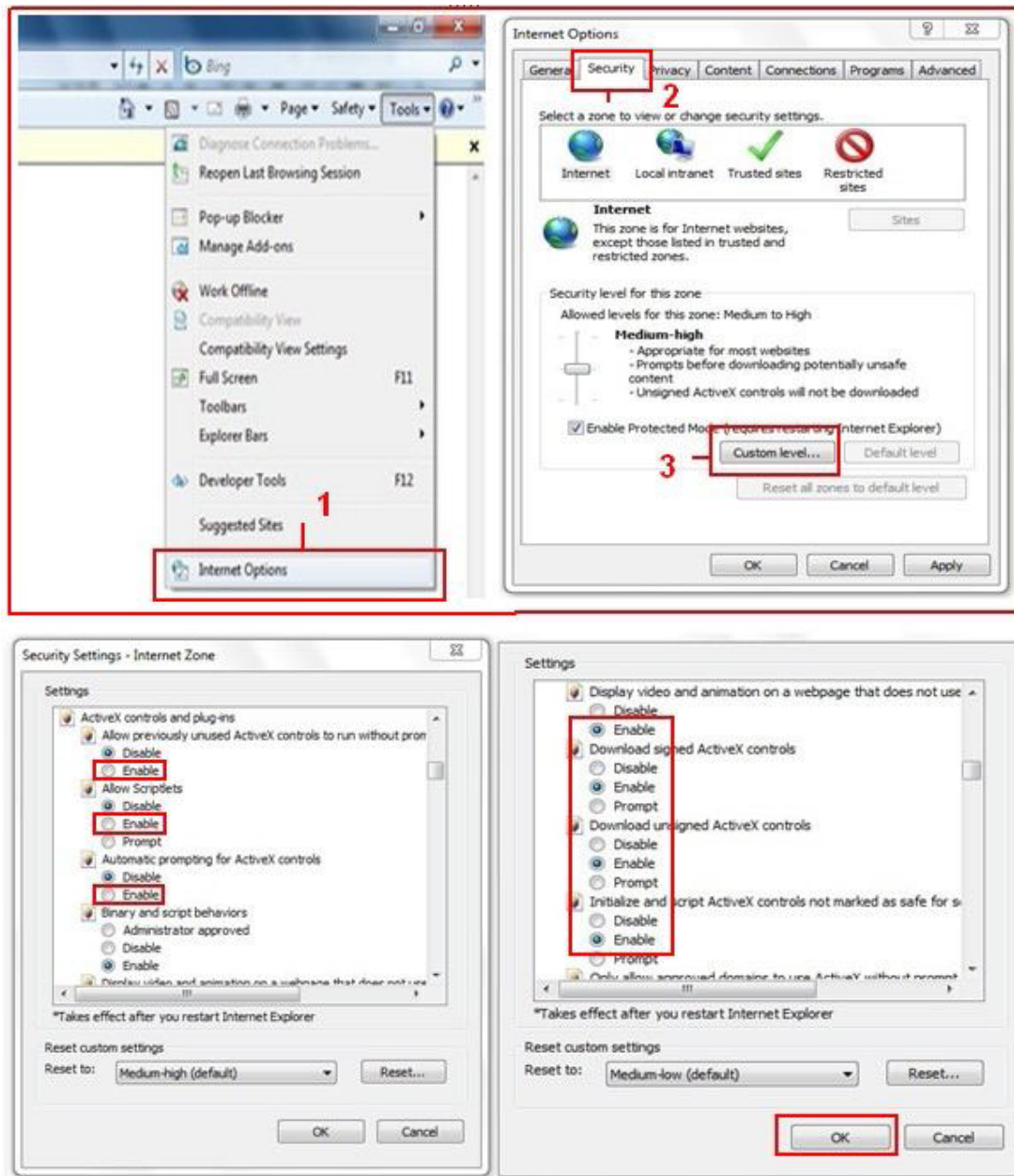
1. Close the firewall of your computer.
2. Change the ActiveX settings, "IE" browser > "Tool" > "Internet Options" > "Security"> "Custom Level" > "ActiveX control and Plug-ins", all the ActiveX options set to be "Enable": Especially:

Enable: Download unsigned ActiveX controls

Enable: Initialize and script ActiveX controls not marked as safe

Enable: Run ActiveX controls and plu-ins

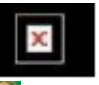





**Figure 3.6**

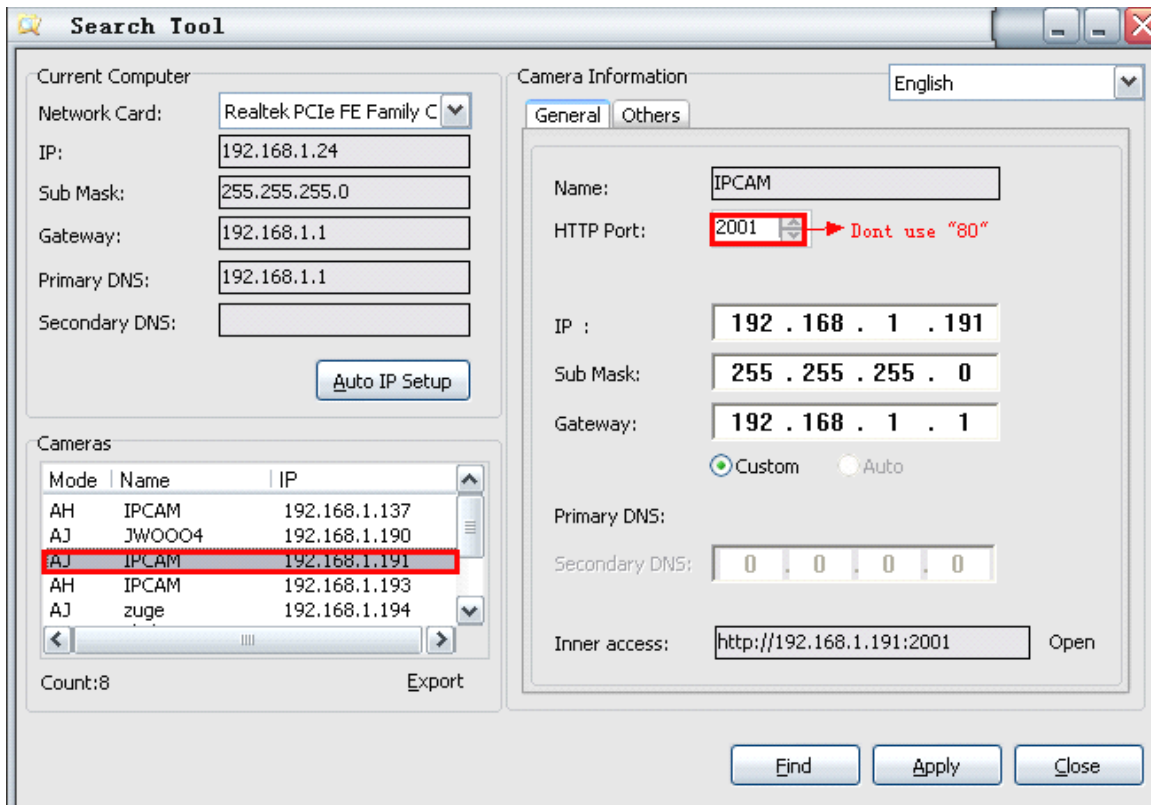
**In Addition: you can also click “start” menu->“Internet Explorer”, choose “Internet attributes “ to enter, or via “Control Panel” ->“Internet Explorer”, enter to Security setting. 3. If there is still no image, please close your anti-virus software, and then try step 1 & 2 again.**

**4. If you allowed the Active X running, But still could not see live video, Only a Red**

**Cross**  **in the center of the video, And the device status light change to yellow color**  **, not green please change another port number to try, Don't use port 80, use other port such as 99, 199 etc.**

**Figure 3.7**





**NOTE:** Make sure that the firewall or anti-virus software doesn't block the software or ActiveX. If you couldn't see live video, please close your firewall or anti-virus software, and try again.

### 3.3. View via Safari, Firefox, Google Browser

Choose Server Push Mode (For Safari, Firefox, Google Browser), and sign in  
 Server Push Mode doesn't support ActiveX, so some functions are not available, such  
 As Record, Audio, Talk, Speaker, The speed control bar, Zoom etc.), if you want to use  
 these functions, please use IE Browser.  
 The Control Interface in this mode is as  
 bellow:



### 3.4. Main Menu interface introduction

Take the “Active Mode(For IE Browser)” For example:



**Figure 3.8**



Make the camera back to the center  
Pan right and left  
Tilt up and down

**The Pan/Tilt Feature only work**

**when the cameras have this Pan/Tilt function.**



**This option enables log detection. After the online user clicks this button, a log is entered into the camera's Log Data documenting the IP address of users who have accessed the IP camera. This Option enables alarm detections too.**



**This button make the camera Vertical cruise (for the Pan/Tilt Cams).**



**This button make the camera Level cruise (for the Pan/Tilt Cams).**



**This button flips the image vertically.**



**This button flips the image horizontally.**



**This button for turn on and turn off the IR LED Light.**



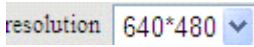
**Control the speed of the Pan/tilt. Only work for the Pan/tilt Cams.**



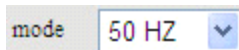
**This button for setting the Preset of the camera. Only work for Pan/tilt Cams**



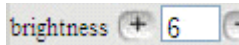
**This setting changes the color of the OSD lettering.**



**This setting changes the image resolution.**



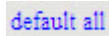
This setting changes the image frequency.



This setting changes the image brightness.



This setting changes the image contrast.



This option resets all main menu options to factory default.



This option opens the camera's recording functionality menu.



This option takes a snapshot of the current screen and saves the snapshot to the PC's Hard Drive.



This option enables User-to Camera audio. If the online user



This option enables Camera-to-User audio. If the online user has speakers connected and configured to their PC, clicking this option will allow them to hear audio from the location of the camera.



This option enables the camera's Network Indicator LED light turn on or turn off.



This button opens the IP camera's Backend Menu



These options enable single view, quad screen view, or 9 screen view: This function serves no purpose unless you have more than one camera connected and configured to your interface.

\* Please refer to section 8.1.1 Multi-Device Settings\*



This feature is only supported by the PTZ IP Camera. Enable the Zoom Function.

## 3.5. Administrator Setting Instruction

When login as Administrator, you can enter the IP Camera for Administrator. Administrator supports all the settings and operations of the camera; you can set and control it freely There are some special functions only for administrator as below:

**Alias setting :** You can set your favorite device aliases, that is the name of your camera.

**Date&Time set :** Setting the date and time.

**User settings :** Can be set up to 8 users. On this page you can set up accounts of the user name, password, as well as in their packet (administrator, operator, visitor).

- **Visitor :** In this mode, you can only visit.
- **Operator :** You can set the direction of the lens device, set the video screen's brightness, contrast and other parameter.
- **Administrator :** You can set the device advanced configuration.

**UPnP set :** If you want internet access IPCAM, to ensure that the state is successful UPnP.

**Device Firmware Upgrade:** The system firmware update the device firmware and application of Web UI

**Restore factory settings :** When there is not a response when the error occurred, you can restore the factory settings to resolve the device.

**Reboot the device :** You can reboot the device.

**Back:** Return to monitor mode.



Device Status	
Device ID	00D6FB014AA9
Device Firmware Version	47.37.2.48
Device Embedded Web UI Version	0.10.4.20
Alias	IPCAM
Alarm Status	None
DDNS Status	88safe Succeed
UPnP Status	UPnP Failed: Rejected by UPnP Device, Maybe Port Conflict
P2P Status	No Action
MSN Status	No Action
<input type="button" value="Refresh"/>	

Device Info
Alias Settings
Date&Time Settings
Users Settings
Multi-Device Settings
Basic Network Settings
Wireless Lan Settings
ADSL Settings
UPnP Settings
DDNS Service Settings
Mail Service Settings
Ftp Service Settings
MSN Settings
Alarm Service Settings
PTZ Settings
Decoder Settings
Upgrade Device Firmware
Backup & Restore Settings
Restore Factory Settings
Reboot Device
Log
GotoCamera
Back

### 3.5.1 Multi-Device Settings

- **Add a local area network equipment**

In the multi-device configuration page, you can see all the equipment inside the LAN. The first device is the default device. You can add more devices listed in the list of equipment. Embedded applications, up to 4 devices at the same time-line. Click the "second road equipment" and double-click "Current list of devices in the LAN" in the device entry name, host address, Http port will automatically be filled, require the user to fill in the correct account name and password, click "Add." Repeat this process you can continue to add devices. Finally do not forget to click on the "Settings" button.

Device Status	
Device ID	00D6FB014AA9
Device Firmware Version	47.37.2.48
Device Embedded Web UI Version	0.10.4.20
Alias	IPCAM
Alarm Status	None
DDNS Status	88safe Succeed
UPnP Status	UPnP Failed: Rejected by UPnP Device, Maybe Port Conflict
P2P Status	No Action
MSN Status	No Action
Refresh	

Device Info  
Alias Settings  
Date&Time Settings  
Users Settings  
Multi-Device Settings  
Basic Network Settings  
Wireless Lan Settings  
ADSL Settings  
UPnP Settings  
DDNS Service Settings  
Mail Service Settings  
Ftp Service Settings  
MSN Settings  
Alarm Service Settings  
PTZ Settings  
Decoder Settings  
Upgrade Device Firmware  
Backup & Restore Settings  
Restore Factory Settings  
Reboot Device  
Log  
GotoCamera  
Back

Figure 3.9

### ● Add a device on the internet

First, make sure you want to add devices to access via IP address or domain name. For example: <http://202.96.133.134:9008> or <http://IPcam.dyndns.org:9008>. And then fill in host address: 202.96.133.134 HttpPort: 9008 or host address: IPcam.dyndns.org Http port: 9008. and fill in the correct account name and password to the last click on "Add." Repeat the above steps can add other devices



Figure 3.10

### 3.5.2 Network Settings

Basic Network Settings	
Obtain IP from DHCP Server	<input type="checkbox"/>
IP Addr	192.168.1.191
Subnet Mask	255.255.255.0
Gateway	192.168.1.1
DNS Server	192.168.1.1
Http Port	2001
<input type="button" value="Submit"/> <input type="button" value="Refresh"/>	

[Device Info](#)  
[Alias Settings](#)  
[Date&Time Settings](#)  
[Users Settings](#)  
[Multi-Device Settings](#)  
[Basic Network Settings](#)  
[Wireless Lan Settings](#)  
[ADSL Settings](#)  
[UPnP Settings](#)  
[DDNS Service Settings](#)  
[Mail Service Settings](#)

Figure 3.11

This sector is for DHCP and IP configuration, port forwarding is needed, If you want to set IP address, please fill in the relative IP address, subnet mask, gateway, DNS server, Http port;

### 3.5.3 Wireless Settings

1. Make sure the router is a wireless router.
2. Make sure the Wi-Fi antenna tighten up.



3. Make sure whether there is encryption of the WLAN of the router, if there is encryption, keep the key. **Attention: No special characters in the SHARE KEY.**

4. Login the camera, click  > “Wireless Lan Settings” > “Scan”, please scan 2times, then you will find the WLAN from the list, choose the one you use.

5. If there is no encryption, just click “Submit”, if there is encryption, please input the key, then click “Submit”.

6. Wait about 30 seconds, the camera will reboot, then unplug the network cable.

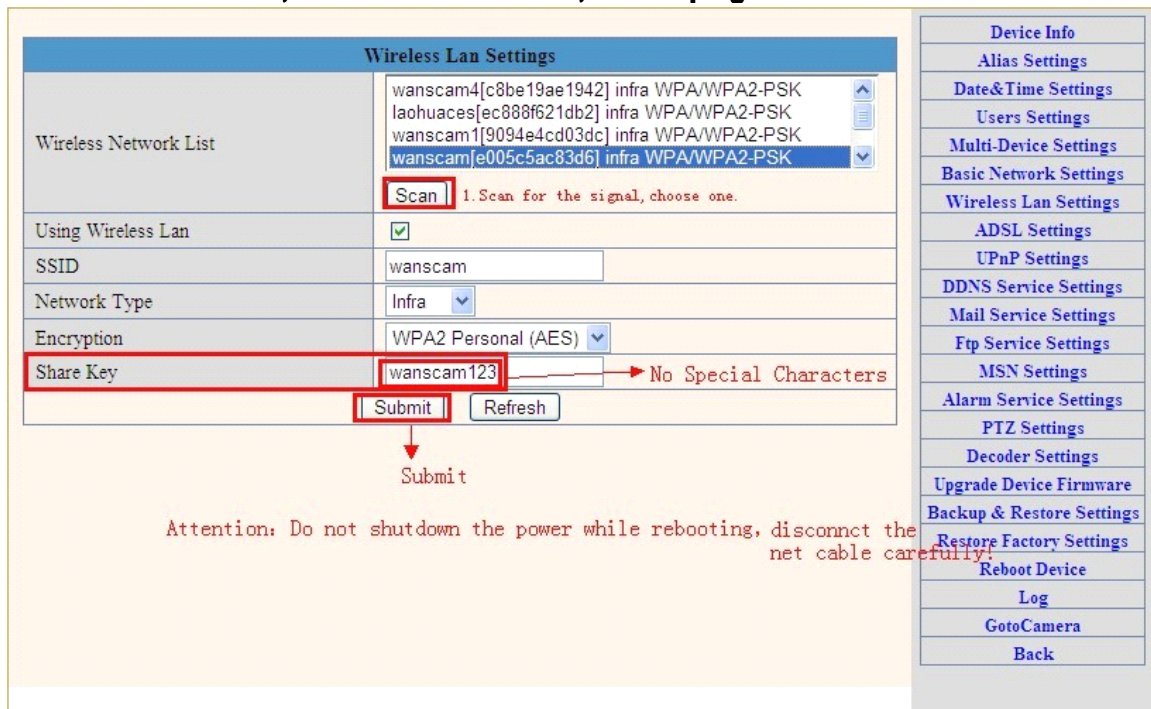


Figure 3.12

### 3.5.4 ADSL Setting

When your device directly connected to the Internet via ADSL, when you need to enter fill in your ISP service providers obtain from the account name and password. Duly completed and click “Settings” button. Your device can connect to the internet has.

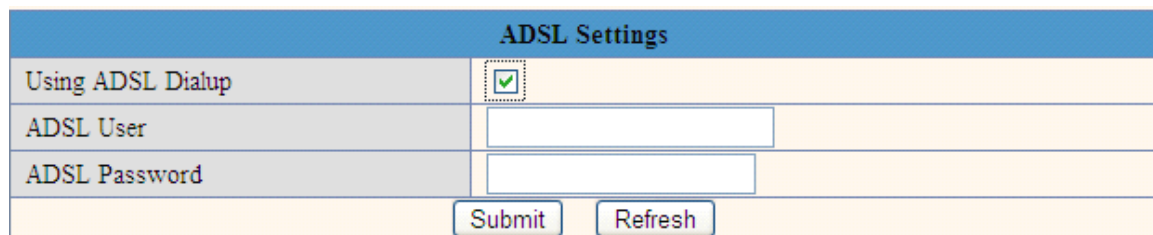


Figure 3.13

### 3.5.5 Dynamic DNS Setting (DDNS)

#### 3.5.5.1 DDNS Setting:



(1): Click  > “DDNS Service Settings”.

DDNS Service Settings	
DDNS Service	vipcam.org
DDNS User	None
DDNS Password	Oray.net
	DynDns.org(dyndns)
	DynDns.org(statdns)
	DynDns.org(custom)
	3322.org(dyndns)
	3322.org(statdns)
	88safe.com(dyndns)
	vipcam.org

Figure 3.14

(2): Choose the DDNS, there are 4 kinds of options:

(1): Manufacturer' DDNS: We provide a free DDNS: **vipcam.org**. This domain is provided by manufacturer.

Note: 88safe.com is old DDNS provided by manufacturer also. If you want to use the manufacturer's free DDNS, Please Choose “ vipcam.org “.

DDNS Service Settings	
DDNS Service	vipcam.org
DDNS User	wanscam1
DDNS Password	.....
<input type="button" value="Submit"/> <input type="button" value="Refresh"/>	

vipcam.org is a free DDNS provided by wanscam factory.

Each camera have a defferent DDNS ID. You can find out your DDNS ID from a mark on the camera.

This is the DDNS User

**IP CAMERA**  
 User: admin Password: none  
 Power adapter: DC5V/2000mA  
 Factory IP: http://192.168.1.99:99  
 Remote Address: X1129 .vipcam.org  
 DDNS Password: 047951

Alias Settings  
 Date&Time Settings  
 Users Settings  
 Multi-Device Settings  
 Basic Network Settings  
 Wireless Lan Settings  
 ADSL Settings  
 UPnP Settings  
**DDNS Service Settings**  
 Mail Service Settings  
 Ftp Service Settings  
 MSN Settings  
 Alarm Service Settings  
 PTZ Settings  
 Decoder Settings  
 Upgrade Device Firmware  
 Backup & Restore Settings  
 Restore Factory Settings  
 Reboot Device  
 Log  
 Back

Figure 3.15

(2): The Third Party DDNS: This domain is provided by the 3<sup>rd</sup> party, such as DynDNS, Oray, 3322

If you use the third party DDNS, please choose the server you need, such as “3322.org” or “dyndns.org” as below:

DDNS Service Settings	
DDNS Service	DynDns.org(dyndns) ▼
DDNS User	wanscam
DDNS Password	•••••
DDNS Host	wanscam.dyndns.org
DDNS or Proxy Server	
DDNS or Proxy Port	
Re-Update Ignoring All Errors	<input type="checkbox"/> never do this unless your hostname has been unblocked
proxy config is needed if the device is in China Mainland or HongKong	
<input type="button" value="Submit"/> <input type="button" value="Refresh"/>	

**Figure 3.16**

DDNS Service Settings	
DDNS Service	3322.org(statdns) ▼
DDNS User	wanscam
DDNS Password	•••••
DDNS Host	wanscam.3322.org
<input type="button" value="Submit"/> <input type="button" value="Refresh"/>	

**Figure 3.17**

**You have to register an account firstly, keep the user, password, host, then fill in it.**  
**Note: Only one DDNS can be chosen, for example, if you use manufacturer's DDNS, the 3rd party one won't work, if use the 3rd party DDNS, the manufacturer's one won't work.**

### 3.5.5.2 Port forwarding settings:

#### 1: Setting the IP address of the camera

The default IP address of the camera is : [Http://192.168.1.99:99](http://192.168.1.99:99) The default IP address of camera you can change to any other one you like, such as:  
 Change to: 192.168.1.109:109. or 192.168.1.99:90 etc.  
 Click "Apply">fill in the user name and password of the camera>click "OK" then the camera will reboot, wait about 30 seconds. You will get your changed IP address.

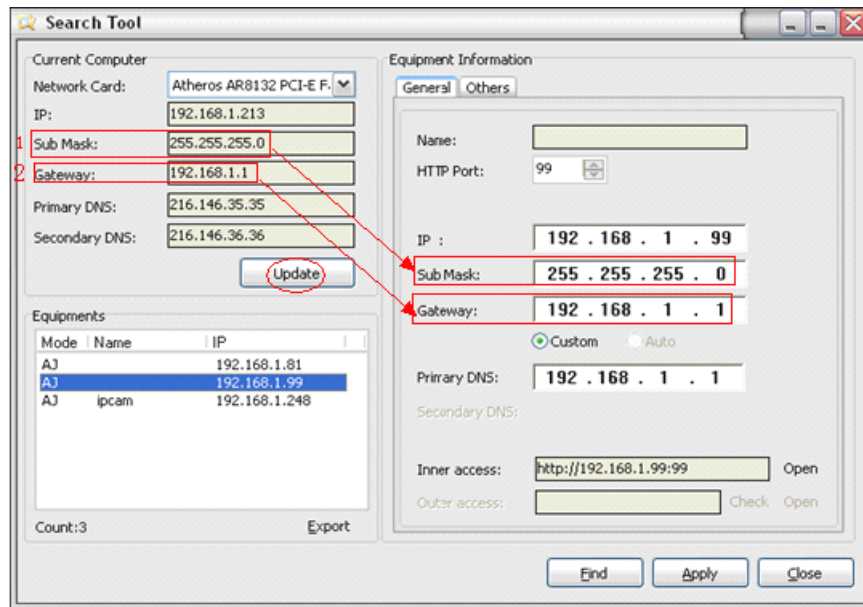


Figure 3.18

Make sure the "Subnet Mask", "Gateway", "DNS Server" is the same as your router.

## 2: Setting Port Forwarding in the router.

This is the most important step. Set port forwarding in router refer to the IP of your camera correctly, then the DDNS will work. Because there are so many kinds of routers from all over the world, so it's difficult to show a fix steps, but there are some samples of different routers' port forwarding settings as below, just for reference:

### TP-LINK:

- (1) Login the router.
- (2) Choose "Forwarding", select "Virtual Servers"



- (3) Click the Add New button, pop-up below:

### Add or Modify a Virtual Server Entry

Service Port:	<input type="text"/>	(XX-XX or XX)
IP Address:	<input type="text"/>	
Protocol:	<input type="text" value="ALL"/>	
Status:	<input type="text" value="Enabled"/>	
Common Service Port:	<input type="text" value="-Select One-"/>	
<input type="button" value="Save"/> <input type="button" value="Return"/>		

Fill the service port (**except 80**), IP address of the camera, then click Save  
The port and IP address should be the same as Camera.

**BELKIN:**

(1) Login the router.

(2) Choose “Firewall”, select “Virtual Servers”

(3) Input the port (**except 80**) and IP address, then click save.

**Note:** The port and IP address should be the same as Camera.

**BELKIN** Router Setup Home | Help | Logout | Internet

**LAN Setup**  
 LAN Settings  
 DHCP Client List  
 Static Routing  
**Internet WAN**  
 Connection Type  
 DNS  
 MAC Address Cloning  
**Wireless**  
 Channel and SSID  
 Security  
 Wi-Fi Protected Setup  
 Guest Access  
 Use as Access Point  
**QoS**  
 QoS Profiles  
 Traffic Statistics  
**Firewall**  
 Virtual Servers  
 MAC Address Filtering  
 Access Control  
 DMZ  
 DDNS  
 WAN Ping Blocking  
 Security Log  
**Utilities**  
 Restart Router  
 Restore Factory Defaults  
 Save/Backup Settings  
 Restore Previous Settings  
 Firmware Update  
 System Settings

**Firewall > Virtual Servers**

This function will allow you to route external (Internet) calls for services such as a web server (port 80), FTP server (Port 21), or other applications through your Router to your internal network. [More Info](#)

Add    
 Clear entry

	Enable	Description	Inbound port	Type	Private IP address	Private port
1	<input checked="" type="checkbox"/>	IPCAM	101	BOTH	192.168.2.56	101
2	<input type="checkbox"/>			BOTH	192.168.2.	
3	<input type="checkbox"/>			BOTH	192.168.2.	
4	<input type="checkbox"/>			BOTH	192.168.2.	
5	<input type="checkbox"/>			BOTH	192.168.2.	
6	<input type="checkbox"/>			BOTH	192.168.2.	
7	<input type="checkbox"/>			BOTH	192.168.2.	
8	<input type="checkbox"/>			BOTH	192.168.2.	
9	<input type="checkbox"/>			BOTH	192.168.2.	
10	<input type="checkbox"/>			BOTH	192.168.2.	

**Figure 3.19**

**DLINK:**

(1) Login the router.

(2) Choose “Advanced”, select “Virtual Servers”

(3) Input the port, IP address, Protocol, then click save.

**Note:** The “public port” & “private port” should be the same as camera’s port, choose the protocol to be “both”.

**D-Link**

DIR-601

SETUP ADVANCED TOOLS STATUS SUPPORT

**VIRTUAL SERVER**

The Virtual Server option allows you to define a single public port on your router for redirection to an internal LAN IP Address and Private LAN port if required. This feature is useful for hosting online services such as FTP or Web Servers.

Save Settings Don't Save Settings

**24 --- VIRTUAL SERVERS LIST**

Name	IP Address	Port	Traffic Type	Schedule
rivomaxcam	192.168.0.107	81	Both	Always
		81	256	Allow All
	0.0.0.0	0	TCP	Always
		0	6	Allow All
		0	TCP	Always

**Helpful Hints...**

Check the **Application Name** drop down menu for a list of predefined server types. If you select one of the predefined server types, click the arrow button next to the drop down menu to fill out the corresponding field.

You can select a computer from the list of DHCP clients in the **Computer Name** drop down menu, or you can manually enter the IP address of the LAN computer to which you would like to open the specified port.

Select a schedule for when the virtual server will be enabled. If you do not see the schedule you need in

Figure 3.20

After all these 4 steps done, then you can use the DDNS freely, check the DDNS status from the camera as below, and get the link of DDNS for internet view.

Step: "Login"> ">"Device Info":

**Device Status**

Device ID	0008FB006C21
Device Firmware Version	0.37.2.43
Device Embedded Web UI Version	0.9.4.12
Alias	WANS CAM118
Alarm Status	None
<b>DDNS Status</b>	Vipcam Succeed
UPnP Status	UPnP Succeed
P2P Status	No Action
MSN Status	No Action

Refresh

**DDNS Status**

Manufacturer's DDNS

3322 Succeed http://jerryweb.3322.org:128

DynDns Succeed http://seamericann.dyndns.org:8085

**Device Info**

- Alias Settings
- Date&Time Settings
- Users Settings
- Multi-Device Settings
- Basic Network Settings
- Wireless Lan Settings
- ADSL Settings
- UPnP Settings
- DDNS Service Settings
- Service Settings
- MSN Settings
- Alarm Service Settings
- PTZ Settings
- Decoder Settings

Figure 3.21

### 3.5.5.3 DDNS Register

For example, you can go to DynDNS website to register a free account.  
<http://www.dyndns.org> / <http://www.dyndns.com>.

Step1: enter <http://www.dyndns.com/> and Create Account



## Rock solid, scalable DNS that just works.

Whether you are a home user, a small & medium business, or all the way up to enterprise... we understand you are busy! Let us simplify your to do list with our proven services.

GET STARTED

Username

Password

Log in

[Forgot Your Password?](#)

[Create an Account](#)

Figure 3.22

**Step2: Set the username and password as below:**

Create an account or log in to continue

**Username** kevinzhu  
Username should start with letter and have 2-25 alphanumeric characters.

**Password** .....  
**Confirm password** .....

**Email** ipcame@qq.com  
**Confirm Email** ipcame@qq.com

**Security Image**  
7 3 4 0 4  
Enter the numbers from the above image:  
73404

**Subscribe to** ☒ DynDNS.com newsletter (1 or 2 per month)  
☐ Dyn Inc. press releases

☒ I agree with the [acceptable use policy \(AUP\)](#) and [privacy policy](#).

Create Account

**Already Registered?**  
**Username** .....  
**Password** .....  
Log in  
[Forgot your password?](#)

**TRUSTe**  
CERTIFIED PRIVACY

Figure 3.23

**Step3: After a minute, you will receive a E-mail from DynDNS Support and it will give you a confirmation address**

(e.g. <https://www.dyndns.com/confirm/create/ONMzltcCBk6mchJI5MhVD0g>)

One more step to go...

We've sent an email to [ipcame@qq.com](mailto:ipcame@qq.com), to verify your account. Please check your inbox and click on the confirmation link.

If you do not receive the email in the next few minutes you can try [resending it](#).

Thanks for choosing DynDNS.com!



**Figure 3.24**

Your DynDNS.com Account 'kevinzhu' has been created. You need to visit the confirmation address below within 48 hours to complete the account creation process:




<https://www.dyndns.com/confirm/create/ONMz1tCBk6mcHJI5MhVD0g>

Our basic service offerings are free, but they are supported by our paid services. See <http://www.dyndns.com/services/> for a full listing of all of our available services.

If you did not sign up for this account, this will be the only

**Figure 3.25**

**Step4: When the Account Confirmed, login and start using your account. Choose Add Host Services(Figure 3.25) and enter Add New Hostname (Figure 3.26)page.**

My Services	Billing	Account Settings
 View, modify, purchase, and delete your services.	 Update your billing information, complete a purchase, and view invoices.	 Update your email address, set preferences, and delete your account.
<a href="#">My Zones/Domains</a> <a href="#">Add Zone/Domain Services</a>	<a href="#">View Shopping Cart</a> <a href="#">Active Services</a> <a href="#">Order History</a> <a href="#">Billing Profile and Vouchers</a> <a href="#">Renew Services</a> <a href="#">Auto Renew Settings</a> <a href="#">Sync Expirations</a>	<a href="#">Change Email Address</a> <a href="#">Change Password</a> <a href="#">Change Username</a> <a href="#">Contact Manager</a> <a href="#">Mailing Lists</a> <a href="#">Move Services</a> <a href="#">Preferences</a> <a href="#">Close Account</a>
<a href="#">My Hosts</a> <a href="#">Add Host Services</a> <a href="#">Dynamic DNS Pro</a> <a href="#">Dynect SMB</a> <a href="#">Internet Guide</a> <a href="#">SendLabs SMTP</a> <a href="#">SSL Certificates</a>		

**Figure 3.26**

**Hostname:**  .

Please enter valid hostname label to add new hostname (2-24 characters).

**Wildcard:** ☐ create "\*.host.dyndns-yourdomain.com" alias  
only for DynDNS Pro users (for example to use same settings for www.host.dyndns-yourdomain.com)

**Service Type:** ☒ Host with IP address  
☐ WebHop Redirect (URL forwarding service)  
☐ Offline Hostname

---

**IP Address:**

[Your current location's IP address is 116.30.138.72](#)

TTL value is 60 seconds. [Edit TTL...](#)

---

**Mail Routing:** ☐ I have mail server with another name and would like to add MX hostname...

*No need to choose*

**Figure 3.27**

**Step5: On the Add New Hostname page.**

1) input your Hostname.

2) choose Host with IP address

3) click [Use auto detected IP address xxx.xx.xx.xxx](#). Then click Create Host.

4) after you have added a New Hostname , you need "Proceed to checkout"

**Shopping Cart**

[Proceed to checkout >](#)

**⚡ Upgrade Options**

Free accounts allow only two Dynamic DNS hosts.

- to add more and enjoy additional benefits for only \$15.00 per year, [purchase Dynamic DNS Pro](#).
- to get Dynamic DNS for **your own domain**, use [Custom DNS](#).

**Dynamic DNS Hosts**

kevinsafe.dyndns.org	-	<a href="#">remove</a>	\$0.00
<b>Order Total:</b>			<b>\$0.00</b>

**Figure 3.28**



Free Services Checkout

Once you have confirmed the contents of your cart your services will be instantly activated.

Service	Period	Price
Dynamic DNS Hosts		
<a href="http://kevinsafe.dyndns.org">kevinsafe.dyndns.org</a>	-	\$0.00
Sub-Total:		\$0.00

Activate Services >>

Figure 3.29

Host Services

[↑ My Services](#)

Hostname	Service	Details	Last Updated
<a href="http://kevinsafe.dyndns.org">kevinsafe.dyndns.org</a>	Host	116.30.138.72	Mar. 23, 2011 10:31 AM

[» Host Update Logs](#)

Add New Host

Figure 3.30

**Step6: Now you obtained a Dynamic Domain Name(Figure3.30),and can use it in the DDNS Service Settings(details: 3.5.5)**

**Notice:**

**If you have a dynamic IP address, Make sure you have download the DynDNS's "Update Client". And installed it succeed in your computer.**

DynDNS.com

by Dynamic Network Services Inc.

What are you looking for?

Search

Why DynDNS.com?

Services & Pricing

Support

Welcome kevinzhu (FREE)

My Account

My Cart

Log Out

Support

Site Help

Account Help

Glossary

Update Abuse Policy

Update Clients

Service Level Agreement

Support

Have a dynamic IP address? Make sure you download our update client:

FAQs

Tutorials

Tools

Contact

Download Now

DynDNS® Updater (4.1.6)

For Windows 2000 or later

Figure 3.31

32

### 3.5.6 E-mail and FTP service Settings

Mail Service Settings	
Sender	hyg339814983@gmail.com
Receiver 1	hyg339814983@gmail.com
Receiver 2	
Receiver 3	
Receiver 4	
SMTP Server	smtp.gmail.com → Make sure your mail has enabled SMTP
SMTP Port	465
Transport Layer Security Protocol	TLS
Gmail only support TLS at 465 port and STARTTLS at 25/587 port.	
Need Authentication	<input checked="" type="checkbox"/>
SMTP User	hyg339814983 → Username of your mail
SMTP Password	..... → Password of your mail.
	Test Please set at first, and then test.
Report Internet IP by Mail	<input checked="" type="checkbox"/>
<input type="button" value="Submit"/> <input type="button" value="Refresh"/>	
Please submit at first, then test.	

- Device Info
- Alias Settings
- Date&Time Settings
- Users Settings
- Multi-Device Settings
- Basic Network Settings
- Wireless Lan Settings
- ADSL Settings
- UPnP Settings
- DDNS Service Settings
- Mail Service Settings**
- Ftp Service Settings
- MSN Settings
- Alarm Service Settings
- PTZ Settings
- Decoder Settings
- Upgrade Device Firmware
- Backup & Restore Settings
- Restore Factory Settings
- Reboot Device
- Log
- GotoCamera
- Back

Figure 3.32

The above setting is a preparation for the alarm function, the sender should be entered the sender's email address, recipient 1、2、3、4 is filled with recipient E-mail address; SMTP server should be filled with the sender email SMTP server, e.g. the sender email address is abc@163.com, and enter mail.163.com. Generally SMTP port is 25, do no need to change; when needs to check, just tick it, and enter SMTP user and SMTP password, both of them are provided by Email provider, and test according to reference; when needs to send, please tick Email notification Internet IP address; The e-mail server and other information can be obtained from the mail service provider the email notification is image captured when alarming if no email notification is needed when alarming, and then no need to enter.

Set up FTP service, you can fill in parameters like following:

Ftp Service Settings	
FTP Server	
FTP Port	21
FTP User	
FTP Password	
FTP Upload Folder	
FTP Mode	PORT
	Test Please set at first, and then test.
Upload Image Now	<input type="checkbox"/>
<input type="button" value="Submit"/> <input type="button" value="Refresh"/>	

Figure 3.33

The above setting is equally similar to Mail Server Settings, when alarming is triggered it also sends image, please enter FTP server, FTP port, FTP user, FTP password, FTP upload directory, FTP mode, FTP mode has two options: PORT and POSV. If needs a quick upload image, then select it, edit upload image interval (second)  
**Pay attention: To make Mail service and FTP function work, you should make sure that your camera can be accessed from internet, besides, all the parameters should be right.**

### 3.5.7. Alarm Service Settings

As shown below, there are two modes of alarm trigger, first one is motion detection, please refer to below interface, the sensitivity of motion detection can be adjusted according to the users' requirement, the higher the number is, the lower sensitivity is; Another mode is input alarm, when connected, it triggers alarm through alarm input signal which connects to linkage alarm GPIO;

When triggered, there are 3 alarm modes: one is IO alarm linkage, camera connects with linkage alarm box through GPIO, sound the siren ; the second is email notification, send email with images captured; the last is upload pictures alarm, as the way mentioned before FTP upload pictures alarm, Upload pictures interval (second) keeps consist nt with the mentioned upload pictures interval of Ftp service settings. The schedule refers to arming time, as the selected time interval: 0: 00 minute per week to 0: 45 minutes and Monday 1: 00 hour and 2: 00 hour

Alarm Service Settings	
Motion Detect Armed	<input checked="" type="checkbox"/>
Motion Detect Sensibility	5
Alarm Input Armed	<input type="checkbox"/>
IO Linkage on Alarm	<input type="checkbox"/>
Send Mail on Alarm	<input checked="" type="checkbox"/>
Upload Image on Alarm	<input type="checkbox"/>
Scheduler	<input type="checkbox"/>
<input type="button" value="Submit"/> <input type="button" value="Refresh"/>	

[Device Info](#)  
[Alias Settings](#)  
[Date&Time Settings](#)  
[Users Settings](#)  
[Multi-Device Settings](#)  
[Basic Network Settings](#)  
[Wireless Lan Settings](#)  
[ADSL Settings](#)  
[UPnP Settings](#)  
[DDNS Service Settings](#)  
[Mail Service Settings](#)  
[Ftp Service Settings](#)  
[MSN Settings](#)  
**[Alarm Service Settings](#)**  
[PTZ Settings](#)  
[Decoder Settings](#)  
[Upgrade Device Firmware](#)  
[Backup & Restore Settings](#)  
[Restore Factory Settings](#)  
[Reboot Device](#)  
[Log](#)  
[GotoCamera](#)  
[Back](#)

Figure3.34

### 3.5.8. PTZ Settings

This sector is for adjusting the speed of PT, pan left&right,tilt up&down.

PTZ Settings	
Disable Preset	<input type="checkbox"/>
Go center on boot	center <input type="button" value="v"/>
PT speed	5 <input type="button" value="v"/>
Upward patrol speed	5 <input type="button" value="v"/>
Downward patrol speed	5 <input type="button" value="v"/>
Leftward patrol speed	5 <input type="button" value="v"/>
Rightward patrol speed	5 <input type="button" value="v"/>
<input type="button" value="Submit"/> <input type="button" value="Refresh"/>	

Device Info

Alias Settings

Date&Time Settings

Users Settings

Multi-Device Settings

Basic Network Settings

Wireless Lan Settings

ADSL Settings

UPnP Settings

DDNS Service Settings

Mail Service Settings

Ftp Service Settings

MSN Settings

Alarm Service Settings

**PTZ Settings**

Decoder Settings

Upgrade Device Firmware

Backup & Restore Settings

Restore Factory Settings

Reboot Device

Log

GotoCamera

Back

### 3.5.9Reset&Firmware upgrading

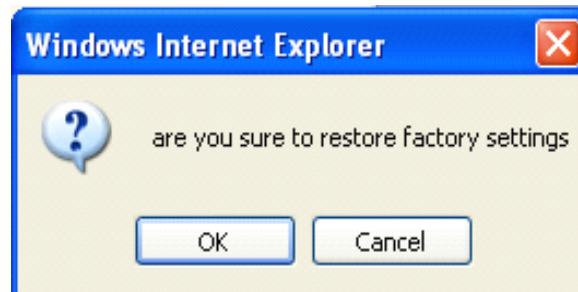
This sector is for camera firmware upgrading, it includes device system firmware Upgrade Device Firmware and device application firmware Upgrade Device Embedded Web UI . Be cautious to apply for it, **it is risky to upgrade your camera.**

Upgrade Device Firmware			
Upgrade Device Firmware	<input type="text"/>	<input type="button" value="Browse..."/>	<input type="button" value="Submit"/>
Upgrade Device Embedded Web UI	<input type="text"/>	<input type="button" value="Browse..."/>	<input type="button" value="Submit"/>

Figure 3.35

### 3.5.10 Restore Factory Settings

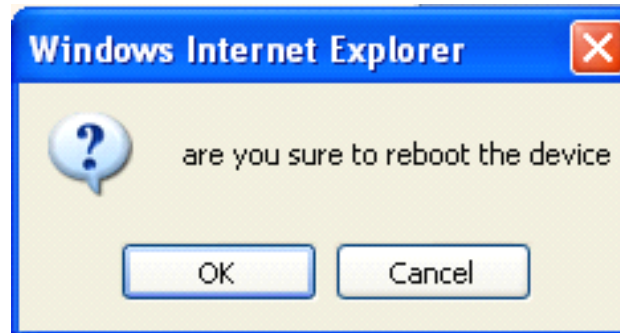
When users forget password, we can restore ex-factory settings, when click, a picture will pop up, Click ok, and wait for 1 minute and you can use it normally. User setting feature restores



**Figure 3.36**

### **3.5.11 Reboot Equipment**

Click restart, it appears the above picture, click ok, wait for 1 minute and you can use it normally.



**Figure 3.37**

### **3.5.12 Go to Camera**

Camera grabs your equipment MAC number to website processing automatically, equipment's MAC number is unique. This function can not need to set up the DDNS and UPNP, that is, they have no relationship, but, as premise, your camera can be visited from internet. That means the camera IP must be set to the outer network IP address. Equipment default ip 192.168.1.99 can not be connected with gotocamera.



Device Status	
Device ID	00D6FB014AA9
Device Firmware Version	47.37.2.48
Device Embedded Web UI Version	0.10.4.20
Alias	IPCAM
Alarm Status	None
DDNS Status	88safe Succeed
UPnP Status	UPnP Failed: Rejected by UPnP Device, Maybe Port Conflict
P2P Status	No Action
MSN Status	No Action
Refresh	

Attention: The device firmware version is over 47.37.2.48, the device embedded web UI version is over 0.10.4.20, then the camera got the GotoCamera function, Click GotoCamera button.

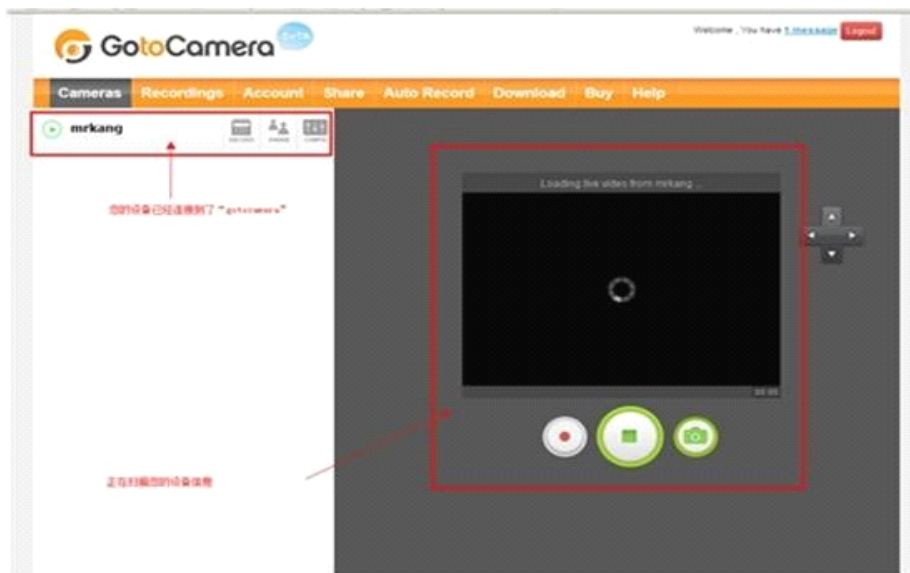
Device Info
Alias Settings
Date&Time Settings
Users Settings
Multi-Device Settings
Basic Network Settings
Wireless Lan Settings
ADSL Settings
UPnP Settings
DDNS Service Settings
Mail Service Settings
Ftp Service Settings
MSN Settings
Alarm Service Settings
PTZ Settings
Decoder Settings
Upgrade Device Firmware
Backup & Restore Settings
Restore Factory Settings
Reboot Device
Log
GotoCamera
Back

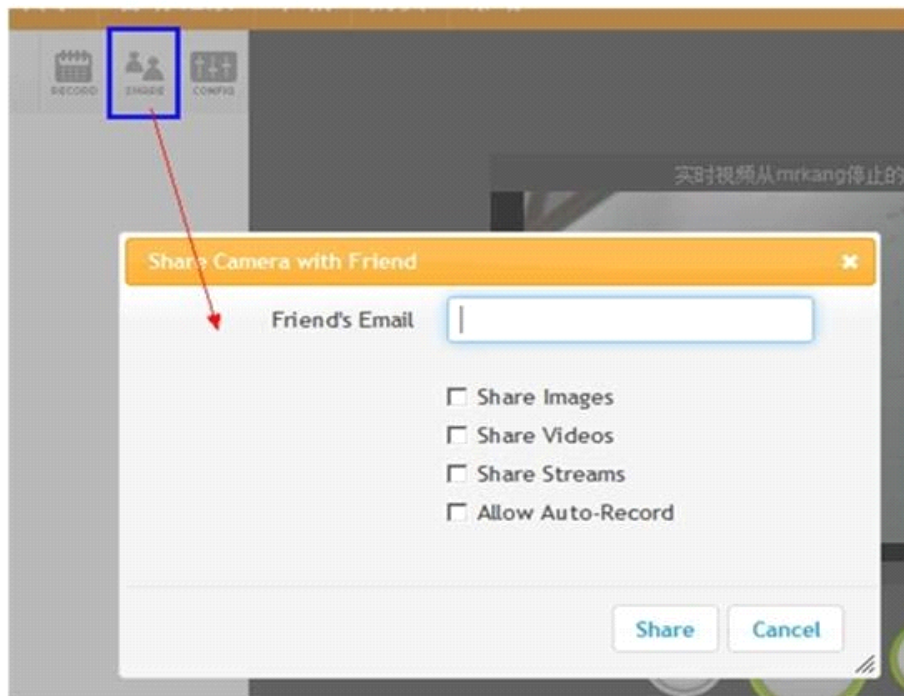
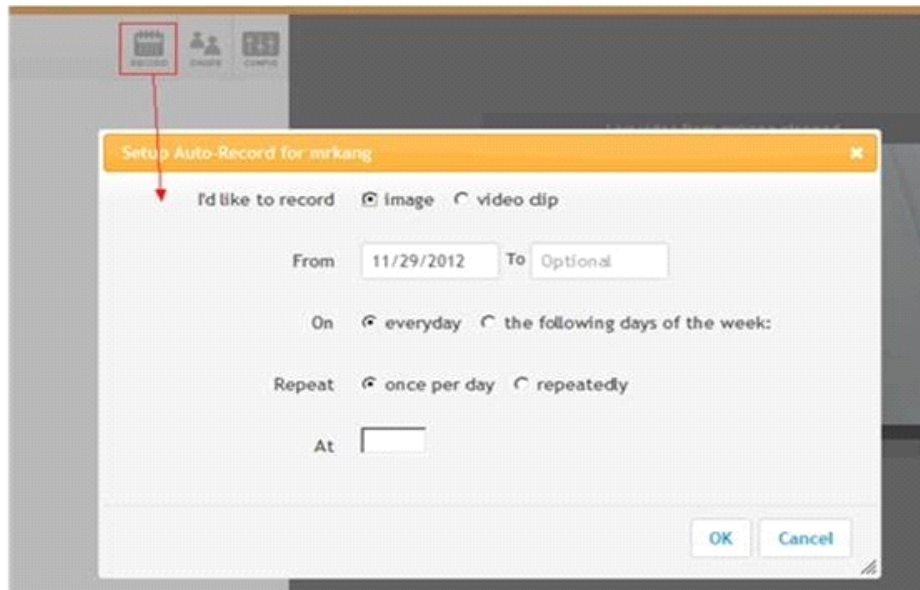
  

GotoCamera	
Don't have a GotoCamera account? Click <a href="#">Sign Up</a> 1. <a href="#">Start Remote Configuration</a>	
Email *	1634049161@qq.com
Password *	••••••
Camera Name *	mrkang
Camera Description	mrkang123
<input checked="" type="checkbox"/> Send Motion Alerts to GotoCamera	
Save Clear	
Version	10100(build212)
Device Identifier	00D6FB014AA9
Status	4/Online (client2.gotocamera.com:443)
<a href="#">Restart Service</a>	* restart GotoCamera service
<a href="#">Reset setting</a>	* reset to factory default settings, all you existing settings will be lost

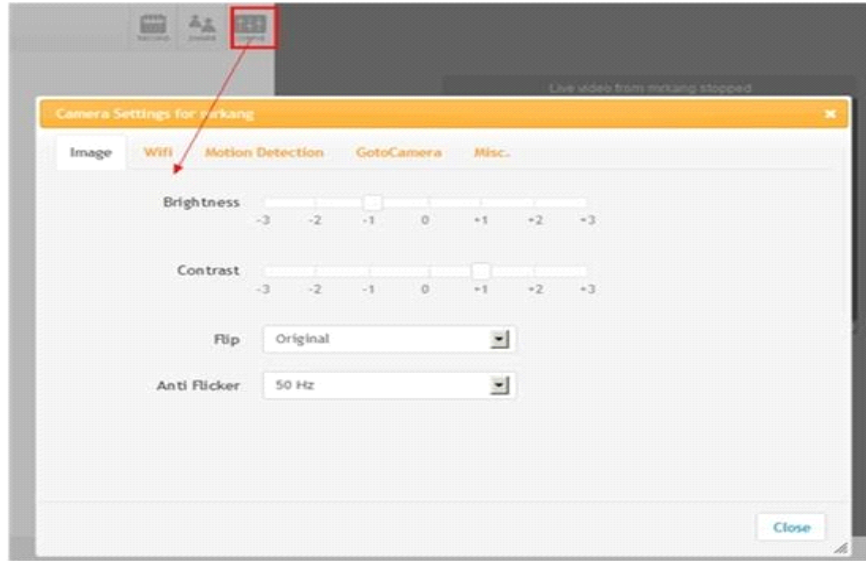
Device Info
Alias Settings
Date&Time Settings
Users Settings
Multi-Device Settings
Basic Network Settings
Wireless Lan Settings
ADSL Settings
UPnP Settings
DDNS Service Settings
Mail Service Settings
Ftp Service Settings
MSN Settings
Alarm Service Settings
PTZ Settings
Decoder Settings
Upgrade Device Firmware
Backup & Restore Settings
Restore Factory Settings
Reboot Device
Log
GotoCamera
Back

**Register:** according to prompts, step by step to fill in writing. After the account number is registered, you will receive a verification email sent to your mail box. Finishing the test and verify, then you got a Gotocamera account.










## 4 Warranty

**Under normal use condition, products resulting from its own failures in the warranty period will be free maintenance. Warranty Terms as following:**

**a) Charge-free maintenance of the product is one year. We can repair it for free during the guarantee period (Damages not caused by misuse or vandalism). Repair over guarantee period, we will charge maintenance fee.**

**b) During guarantee period, breakdown caused by misuse or other reasons out of**

range of warranty. You could ask repair depend on the card. We only charge for changed components, the maintenance charge is free.

c) When the products need maintenance, hand up the card with products to the manufacture or local distributor.

d) Take apart item crust, tear up the sealing label privately, this is out of warranty range.

e) We do not accept the damaged item due to modification or add other functions.

**The Following Circumstances will not be free warranty**

a) Period check, maintenance or change components due to normal attrition.

b) The damages due to crash, extrusion, artificial flooding, moisture or other personal reasons.

c) The damages due to floods, fire, lightning strike and other natural calamities or force majeure incidents factors

d) Repaired item by non-authorized repair centers.

All above terms, if changed, regarded to relevant regulations.

# THAT'S ALL, THANK YOU!