

# UniNet<sup>®</sup>

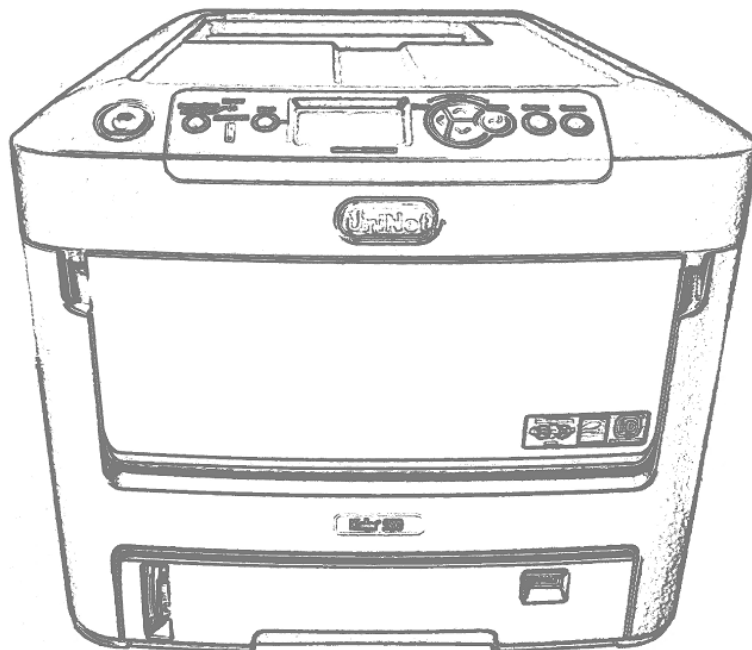
# iColor<sup>®</sup>

## PRINTING SOLUTIONS

powered by **UniNet**

## iColor<sup>®</sup> 500 Apparel Plus Printer

## User Manual





# Table of Contents

iColor® 500 Model Summary	Page 3
Printer Software Installation Instructions	Page 4-6
Printer Settings for iColor® Transfer Media	Page 7-9
White print Instructions	Page 10
Multipurpose tray settings	Page 11-13
iColor® Transfer RIP Information	Page 14
iColor® 500 Printer Spec Sheet	Page 15
iColor® 500 Printing Tips	Page 16-17



## iColor® 500 Apparel Plus Printer

The iColor® 500 printer has been developed to produce high-quality conventional color prints with the out of the box functionality of printing in white.

Please follow the enclosed quick setup guide to get started. The standard user manual (provided on CD enclosed) will provide detailed instructions for full printer functionality. The iColor® 500 comes complete with 4 toner cartridges for full color and black printing (CMYK), as well as our exclusive fluorescent white printing kit (toner and drum combination). Just quickly swap the black for white when you want to add white effects. Black can then be produced using composite black (made from CMY), or if true black and white is needed at the same time, just pass the print through the printer a second time. Our registration system will ensure the prints are lined up perfectly.

You will also have the option to add our full fluorescent kit which comes complete with 3 [CMY] toner cartridges and matching drum units. This system requires no additional software or expertise to print conventional CMYK images in vivid fluorescent color.

Please note that vector and line art images, including text, are likely to produce the best results. For exciting design ideas and suggestions for using the iColor® 500 for maximum effect, please visit our website at [www.iColorprint.com](http://www.iColorprint.com).

iColor® premium transfer media has been optimized to provide quality results when used with the printer, enabling the user to produce eye-catching designs which may be applied to a variety of textiles and surfaces.

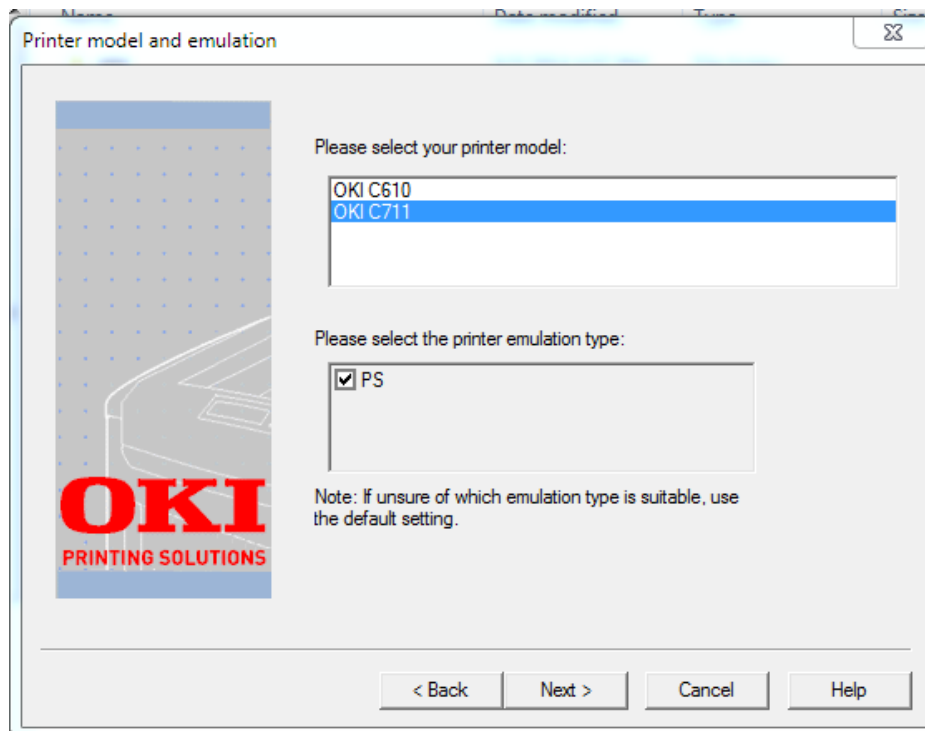


# Installing iColor® 500 printer on a PC

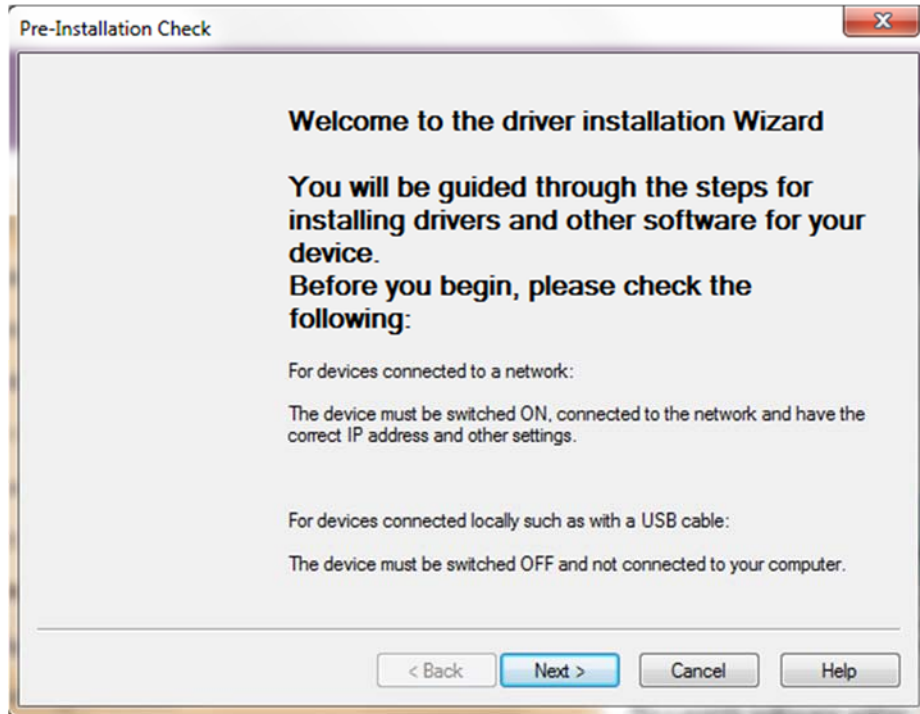
These instructions are for Windows 7 via USB cable, others are similar. You must have Administrator privileges on the computer.

1. Unpack the printer according to the Set-up Guide. Do not turn it on or connect it to the computer until the install program asks you to do so.
2. Put the installation DVD into the drive and setup should automatically run.
3. Choose your language and select printer model (target device) **C711**.
4. After accepting the software agreement and going past the environmental advice pages, you can select software to install. Click the Next button.

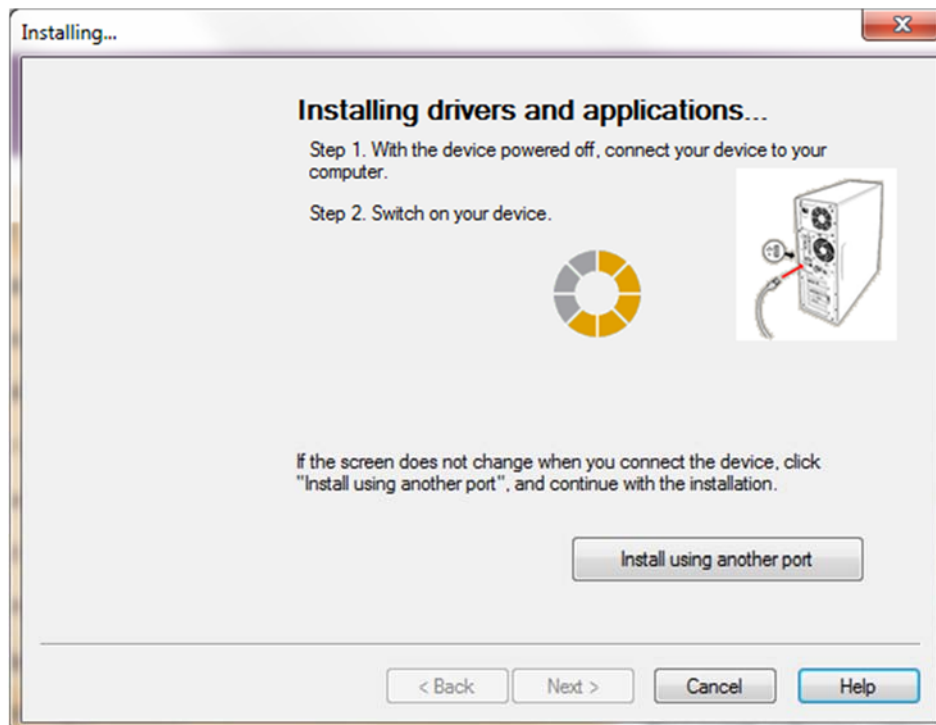
Also, near the bottom of this are the online manuals for later reference.



5. The installation will proceed, click **Next** with the machine off and not connected to your computer.



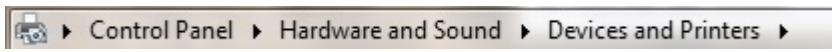
6. Click **Easy Installation (Local)** then **Next**. Then you will see the dialog box below



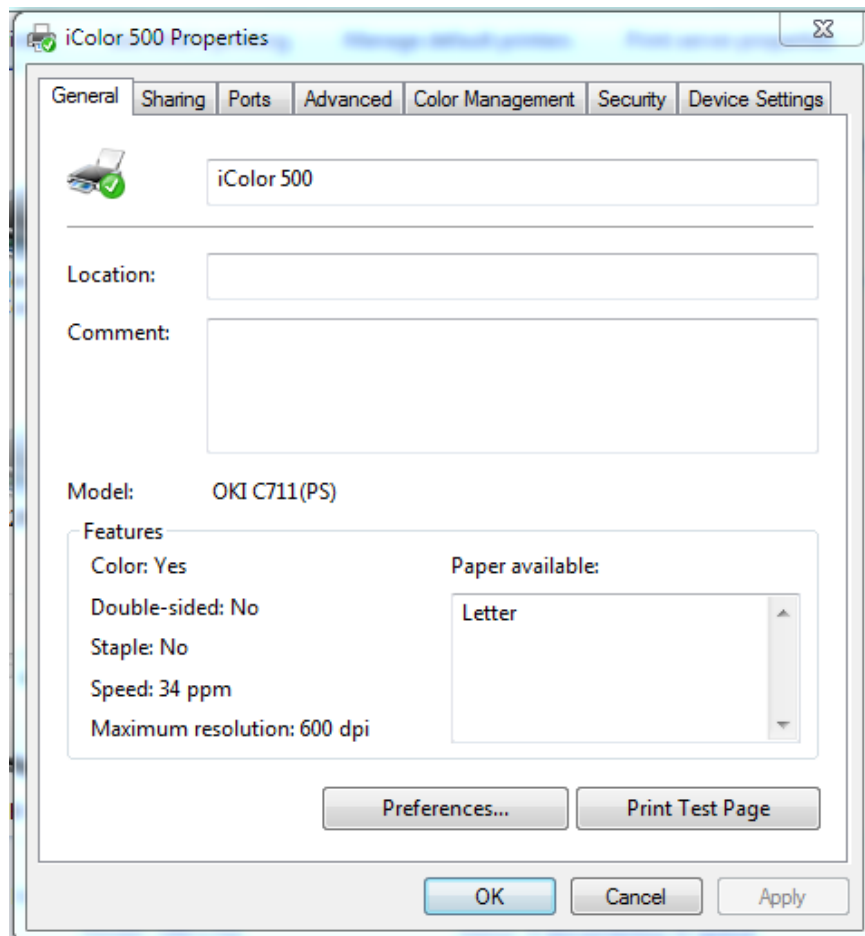
- Usually the next screen will show the installation progress, followed by the Finish screen. If not, click the **Install using another port** button and accept the USB default shown.

## Rename the Printer

- Navigate from the start menu to the list of installed printers. The Window 7 path is:



- Right click on the printer **OKI C711(PS)** and select the printer properties.
- On the **General tab** highlight the printer name and change it to 'iColor 500', then click **OK**





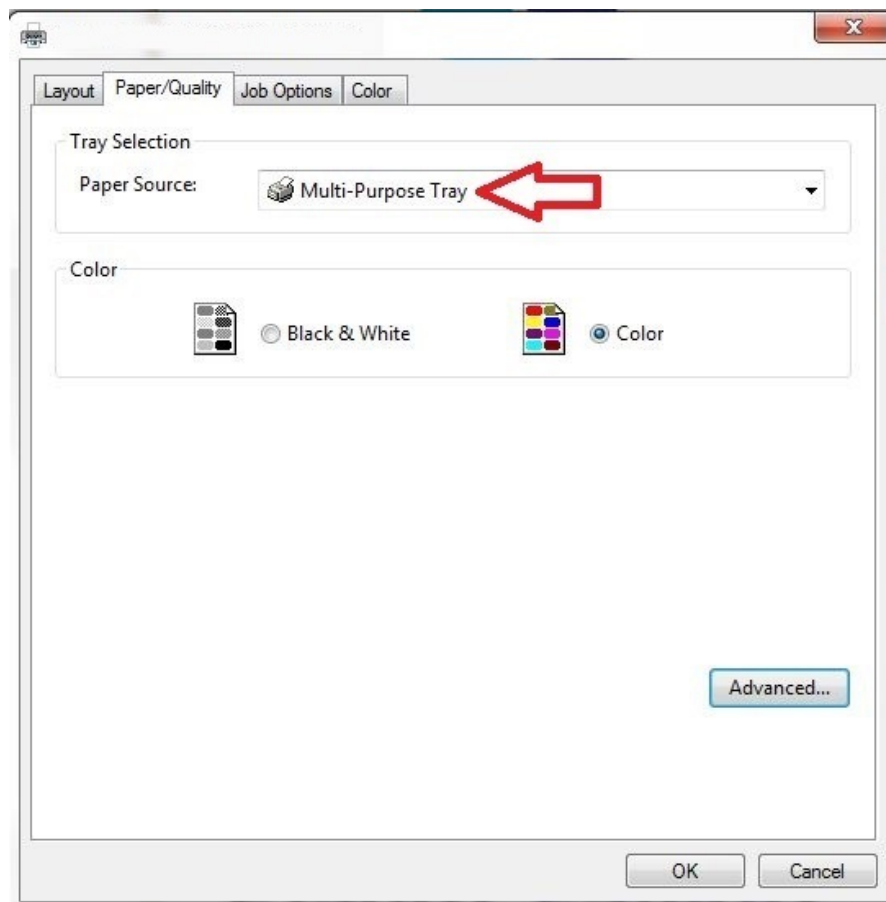
# iColor® 500 printer settings for iColor®

## Premium Transfer Media

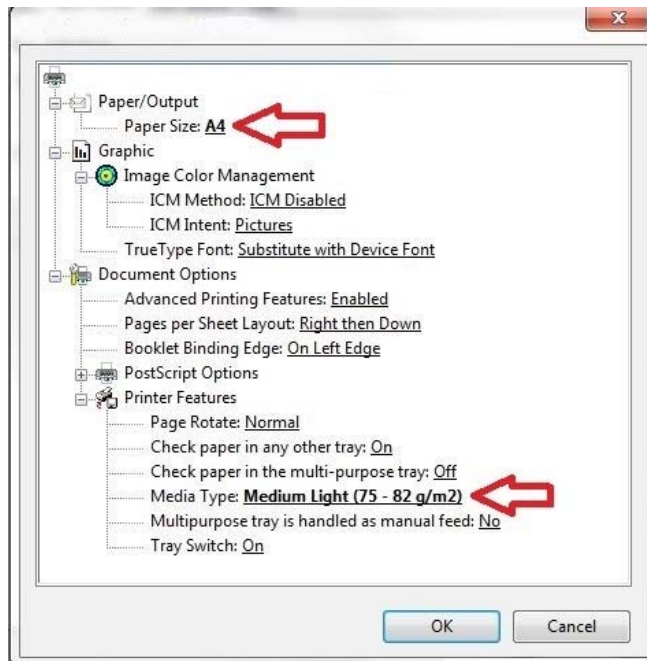
These instructions are shown using the PostScript or **PS driver**. The choices are the same for the **PCL driver** but the dialog boxes are different.

These can be set as **Printer Preferences** from Devices and Printers or as **Document Properties** when printing. Setting them as Printer Preferences means they will be the same the next time you use the printer.

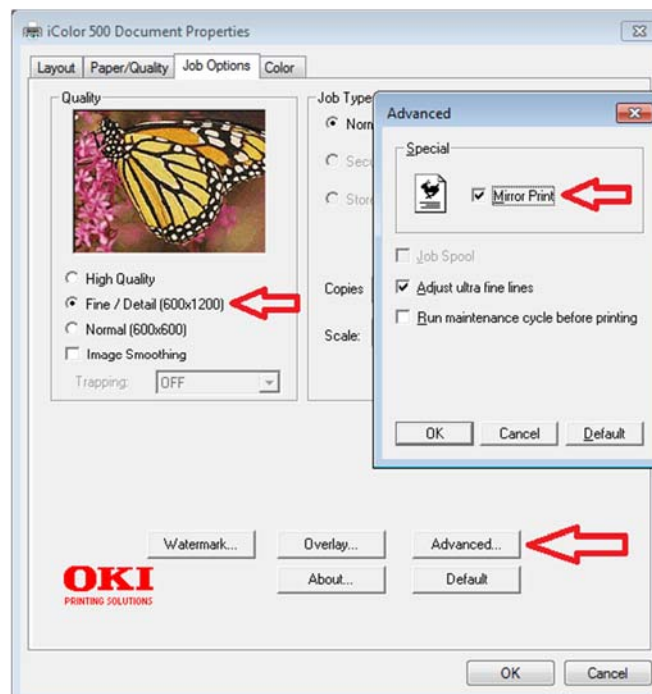
1. Under the Paper/Quality tab, set the paper source to the **Multi-purpose Tray**.



2. Click **Advanced** button. Paper type should be 'Medium Light' and the page size should be 'A4'.

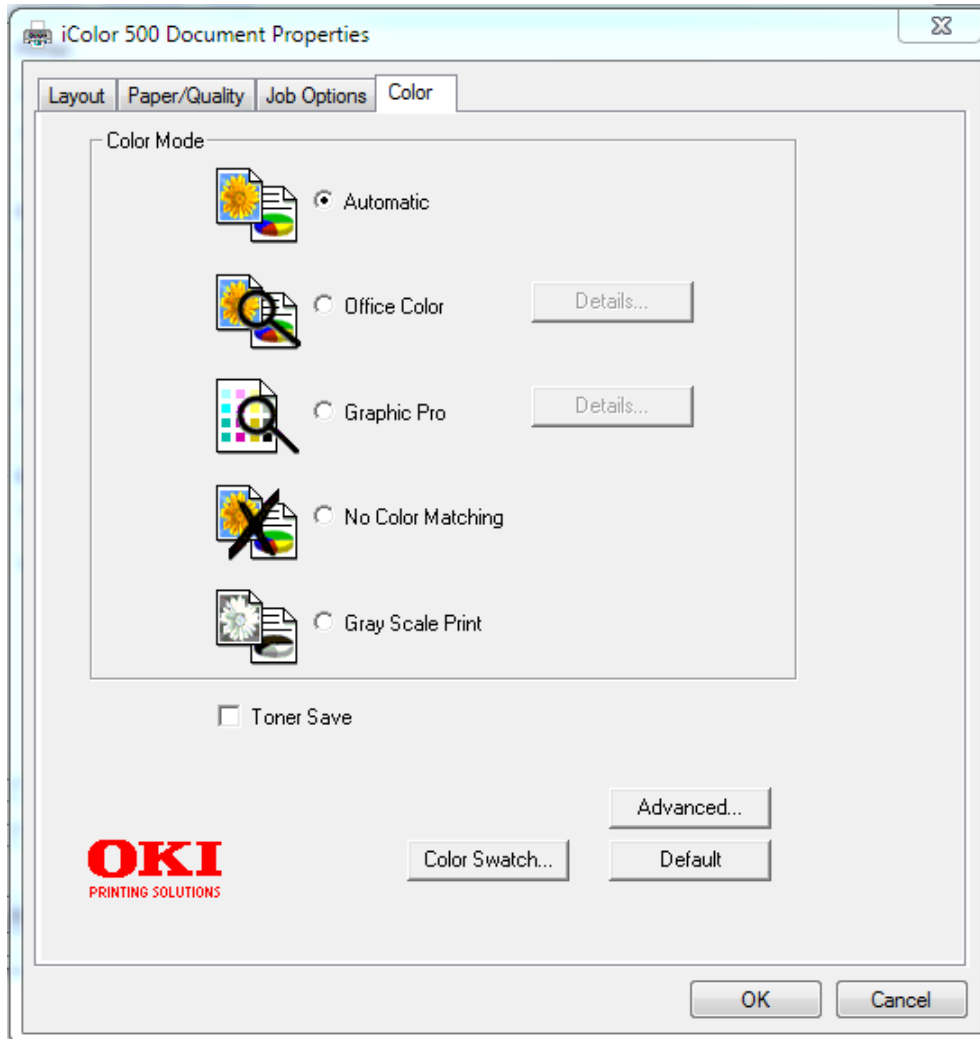


3. The Job Options tab is normally left at defaults. We suggest the print quality be set to "Fine". Click the **Advanced** button and select the option for **Mirror Print**. This will ensure the image looks correct when transferred to a garment. Note: The PCL Driver does not include this option.





4. Click the Color tab and turn off the **Toner Save** mode. The **Color Swatch Utility** allows you to print a range of colors to find settings matching the one you want. The help button on it describes how to do this.



5. Please do not alter any of the factory settings on the machine itself. Doing so can produce undesired results



## Using white with the iColor® 500 Printer

With the White kit installed, the machine will print white where the image/text displays black, by default. Please note that vector and line art images, including text, are likely to produce the best results. You must create images using true black:

CMYK:            C: 0% M: 0% Y: 0% K:100%



This is true black color. Text and graphics created in this color will give the best white results when printed. These printers will also print composite black with the white kit installed. For true black printing, simply replace the white kit, with the included black kit.

## Using white with colors to assure transfer of halftones

Images that contain halftones or gradients can cause problems with self-weeding transfer media. This is because the background is assumed to be white and nothing is printed there.

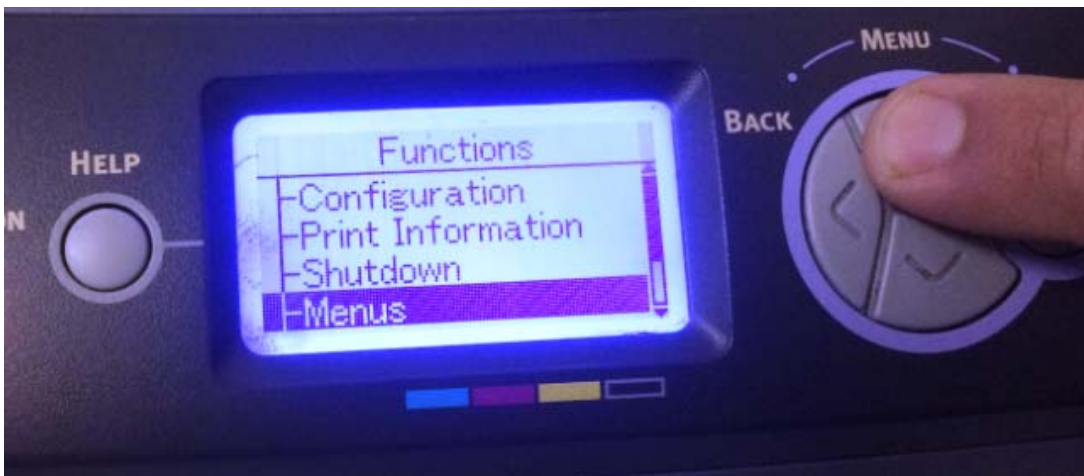
It is usually easiest to use an image editing program to create a copy of the image using true black as illustrated above. Select the entire image and change the color, saving as a separate file.

Print the standard colors onto a transfer sheet first, then print the true black image you saved previously over the printed color image by passing the transfer sheet through the printer a second time using the multi-purpose tray. From there follow the usual process for the iColor® premium transfer media.

## Setting the Multipurpose tray to work with specific sized papers

iColor transfer papers come in a variety of sizes, so it is recommended that you set the MPT tray to the size of the paper that you most commonly used. If the MPT tray identifies a paper that is not within its set parameters, the iColor 500 printer will prompt you to press the online button after each print. Adjusting the settings will avoid this for the specific size you set:

- 1) Press the 'Menu' button and scroll down to 'Menus' and press enter



- 2) Scroll down to 'Tray Configuration' and press enter



3) Scroll down to 'MPTray Config' and press enter



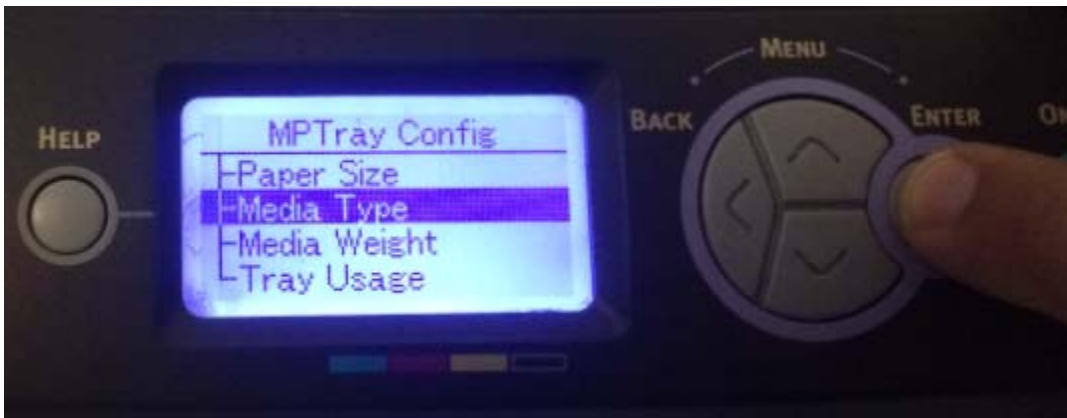
4) Select 'Paper size' and press enter



5) Select the desired paper size and press enter



6) Press 'Back' and scroll down to 'Media Type' and press enter



7) Select the desired media type and press enter



8) Press the online button to return to the main screen and you are ready to print on your preferred media through the MPT!

# UniNet®



**iColor® TransferRIP**  
COLOR PROFILE • WHITE CONTROL • RASTERIZATION

[www.icolorprint.com](http://www.icolorprint.com)

Use the available iColor® TransferRIP software to print fluorescent white behind color in one pass.

The iColor® TransferRIP software allows the user to manipulate the white layer behind the graphic for printing on dark or transparent media where white is needed as a background color. Multiple cartridge configurations are available to easily adjust for reverse printing, where white is needed as a top color for apparel. No need to create additional graphics with different color configurations – the software does it all – and in one pass! Enhance the brilliance of any graphic with fluorescent white behind color!

#### **Print and Transfer onto:**

- Natural and synthetic fabrics
- Dark and light fabrics
- Beer, wine and juice bottles
- White, colored or clear labels
- Leather
- Dark and light paper stock
- Foils
- Transparencies with fluorescent white as a background color
  
- Create unique items - The possibilities are endless!
- T-shirts and sweatshirts
- Aprons
- Dark restaurant menus with fluorescent white print
- Corporate logo shirts
- Mouse pads
- Sports apparel
- Jackets
- Tote bags
- Signs with colored, white or fluorescent toner



# iColor® 500 Apparel Plus Printer

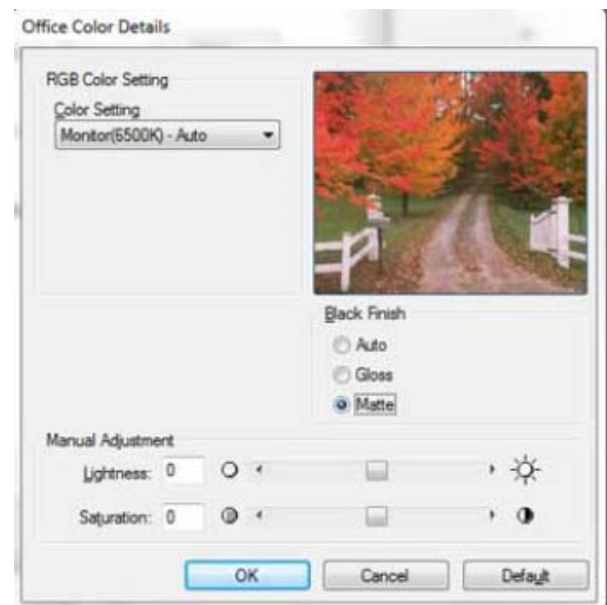
## Specifications

Skus:	iColor® 500 CMYKW Apparel Plus Transfer Printer		
Print Speed Mono:	36	Paper Size:	Main Tray, standard/optional 2 <sup>nd</sup> Tray, and optional 3 <sup>rd</sup> Tray – 5.8” x 8.3” to 8.5” x 14”; Multi-Purpose Tray – 3” x 5” to 8.5” x 52” banner; Duplex – 5.8” x 8.3” to 8.5” x 14”
Duplex:	Optional	Size:	17.1" x 21.5" x 15.3"
Duty Cycle:	100000	Weight:	60.8 lb. (27.6 kg)
Memory:	256	Power:	120v
Resolution:	1200 x 600	Print Speed Color:	34
Interfaces:	USB v2.0, Parallel/10 Base-T/100 Base-TX Internal Ethernet Print Server		
Paper Capacity:	630 sheets standard (530-sheet Legal/Letter/Universal Main Tray + 100-sheet Multi-Purpose Tray).		

## iColor® 500 Printing Tips

When transferring images with halftones, it's possible that some of the adhesive will not transfer over to the toner during the first step. If you see this happen with your image, just reprint the image and then print a layer of white behind (On top) of the image to thicken up the density and give the adhesive something to stick to. Halftone colors use much less toner. Printing the white over the image will fill in the gaps. It will not change the color, but gives the adhesive something to stick to. To do this, print your image in color as normal, Then using a graphics program, create an outline of the image slightly smaller than the actual size, and fill that outline in with 100% Black (K).

The iColor® 500 by default will print all black graphics and images using composite black and text using true black. This could cause your solid black graphics to print grey/pink instead of solid white (when using the white kit). In order to address this, please go into the printer driver and adjust as follows. Your specific driver might look like either of these two choices below. This change will force all black images to print using only the white kit and therefore giving you solid white images as desired.







There are many variables that could produce different results. Specific steps may need to be altered based on:

- Type and brand of Heat Press: The temperature and duration varies slightly based on the heat press being used. All instructions are based on using a Hotronix Fusion press. Clam shell and swing away presses may also yield different results.
- Type of image: Photos or full color graphics may require a longer press time than vector images or text
- Type of garment: Cotton, Polyester, and Spandex material all respond differently to heat. All instructions are based on cotton garments
- Toner Coverage: Halftones in image may cause undesired results. Toner coverage should not be less than 50%, otherwise there will be issues with transferring the adhesive to the transfer sheet. Halftones can be corrected by printing white on top of color (either running the sheet through the printer a second pass, or using the iColor® Transfer RIP Software to apply a white layer in one pass). This will help with toner coverage and proper adherence to the garment.

Consult the iColor® knowledge base for specific instructions on a variety of transfer paper offered at:  
<http://www.iColorprint.com/support>