



JumpVault™ 2008 Mobile Security Software

User's Manual for Application Release - 2008

TABLE OF CONTENTS

Section	Name	Page
1	Overview	2
2	Installation	4
3	Functions	5
4	Login	6
5	Profiles	6
6	Backup	9
7	Restore	9
8	Explorer	10
9	Logs	11
10	Preferences	11
11	Help/Support	11
12	Internet Security	12
13	AutoSave	13
14	Reset to Factory Defaults	13



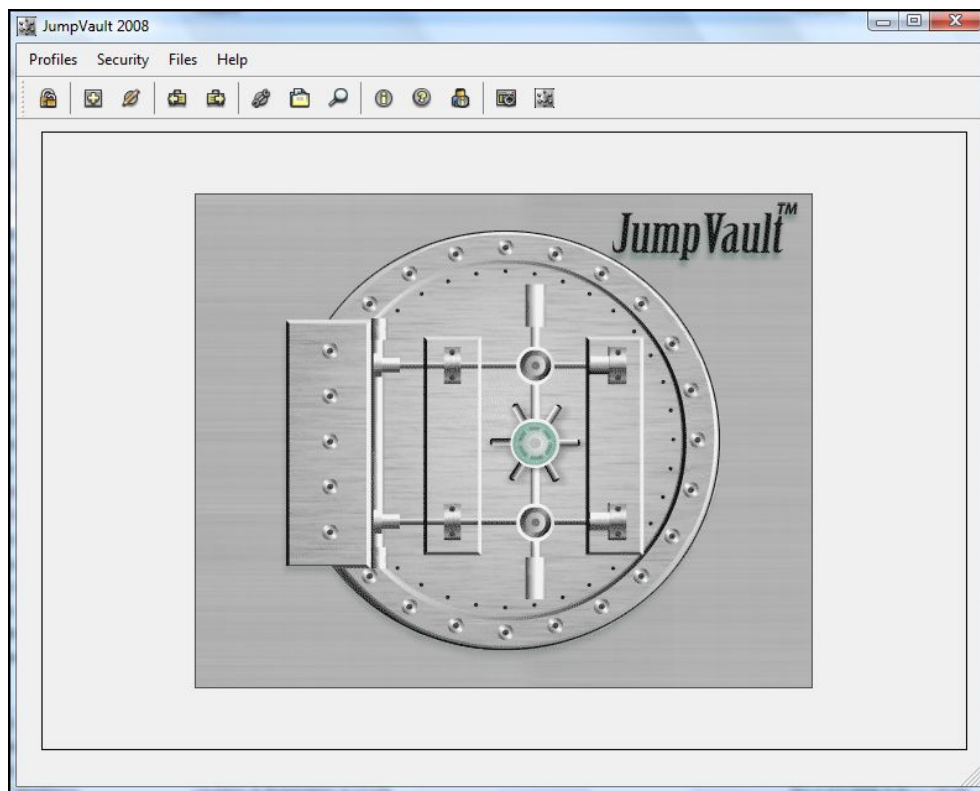
1. Overview

JumpVault™ is a patent-pending mobile security and backup software system that is stand-alone and **works on and only from mobile devices and USB external storage device(s)**. JumpVault™ allows the user to safely store and transport selected files and folders on any USB external storage device. JumpVault™ encompasses the latest in compression and encryption technology, backed by an extra layer of security using password protection. As illustrated on Page 2 of this manual, the main product menu allows the user to access all primary functions. These functions include: Profile Setup and Maintenance, File Backup, File Restore, and File Maintenance functions. The JumpVault™ 2008 software is available in two user versions (**BASIC, PROFESSIONAL**). Features and functions will vary between versions. Your registration number will unlock the features related to the purchased product version. Please refer to the chart on Page 3 of this manual for a complete comparison of product features and functions.

NOTE: JumpVault™ operates on Windows NT/2000, XP, VISTA™, and MAC™ operating systems (OS) for backup and restoration (not supported on Windows 98/SE/ME and older operating systems).

Minimum System Requirements:

- ❑ Pentium 366 MHz or higher with USB Port 2.0/1.0
- ❑ 256 MB Free Disk Space on USB external storage device(s)





JumpVault 2008 Versions

The JumpVault™ 2008 software is available in two user versions (**BASIC**, **PROFESSIONAL**). As noted below, the features and functions vary between versions. You may upgrade your **BASIC** product to the **PROFESSIONAL** version. To upgrade your product, visit www.jumpvault.com

Features	Basic	Professional
Number of PCs	1	unlimited
Internet Backup	No	Coming Soon
Remote Security	No	Yes
Internet File Sharing (Private/Public)	No	Coming Soon
Internet File Syncing	No	Coming Soon
PC File Syncing	No	Coming Soon
Outlook Syncing	No	Coming Soon
Backup Profile Defaults	Yes	Yes
Backup Scheduling	No	Yes
Drag and Drop Files (autosave)	No	Yes
Include/Exclude Files	No	Yes
File Management	Yes	Yes
File Explorer	Yes	Yes
File Version Tracking	No	Yes
Windows/Vista//MAC	Yes	Yes
256 Bit Encryption	Yes	Yes
File Compression	Yes	Yes
Meta Data logging*	No	Yes

* tracks the movement of data to and from mobile device



Installation and Running JumpVault™

Scenario 1 – USB external storage device(s) with JumpVault™ Software

- If JumpVault™ installation files are already on your BlackBerry⁽¹⁾, mobile phone or USB device, you can install the application from the root of USB external storage device(s) (i.e. E, F, G, other) by double clicking on the <JumpVault2008Setup.exe> file.
- When your USB device is plugged into your computer, open the folder containing the JumpVault™ installation files. Double click on the <JumpVault2008Setup.exe> to install it.

Scenario 2 – Software only Version of JumpVault™

- If you have purchased or downloaded JumpVault™ software from www.jumpvault.com or another affiliate website, follow these instructions below to install and use the software:
 - 1) Download the *JumpVault2008Setup.exe* installation file to your BlackBerry⁽¹⁾, mobile phone or USB storage device.
 - 2) Double-Click the *JumpVault2008setup.exe* file and follow instructions on screen, to install the application on any USB external storage device(s).

NOTE: JumpVault™ software will only work if installed on a USB external storage device(s) (usually E or F), not on hard drive i.e. C, D or on any other network drives.

Once installed on your USB external storage device(s), you can run the application <JumpVault.exe> file from the /Bin directory on the USB device.

NOTE: In order to enable Autorun of the JumpVault™ Backup Software, you have to restart your machine after the first use of the software. Autorun is activated only after the restart of your computer.

¹BlackBerry Settings

Settings / Options / Media Card	Check Setting As
Media Card Support	On
Encryption Mode	None
Mass Storage Mode Support	On
Auto Enable Mass Storage Mode When Connected	Yes

2.1 Trial Period and Registration

If you downloaded the product on a Free Trial basis or if the product was pre-installed as a Free Trial on your USB storage device at purchase, you may obtain a **Trial Registration** number for Free. By getting a Trial Registration number you will be able to use the JumpVault™ 2008 software for 30 days. The Software will expire after the 30 day period and you will need a permanent Registration number to use the product.



The permanent Registration code is available upon purchase of the software from our online website or by clicking on the <BUY NOW> button within the application.

2.1.1 Registration

Step 1: is the Registration Process where you key in your **Registration Number and user name** included in the email (or packaging) that you received when you purchased the product.

2.2 Password Protection

The JumpVault™ Mobile Security and Backup Software requires password protection. When using the JumpVault™ software application for the first time a dialog box is displayed to create a password, which will prevent non-authorized users from accessing your files. Once established, you will need to use the password each time to enter the application. You may change your password at any time through the **PREFERENCES→PASSWORD TAB** function.

***NOTE:** You can use certain versions of this product across several PCs. The initial password is used to set the password protection for all PCs*

3. JumpVault™ 2008 Functions

The Main Menu contains buttons to invoke the following system functions:

FUNCTION	DESCRIPTION
LOGOUT	Will log the user out of the application.
PROFILE	Wizard to create new profiles for backup jobs.
EDIT PROFILE	Wizard to change existing profiles for backup jobs.
BACKUP	Select a profile and run a backup job.
RESTORE	Select a profile and restore the files from a backup job to a designated location.
MAINTENANCE	Allows searching and management of files and folders stored on the USB device.
TREE VIEW	Displays the files and folders on the USB device related to a selected profile.
SEARCH	Allows free form, structured, and date range searches of files stored on the USB device.
PREFERENCES	Allows password changes and remote security configuration.
HELP	Provides general information about the product, release, and registration information.
ABOUT US	Product Version Information, Support and Release Notes



SHOW/HIDE	Moves JumpVault to the system tray.
REMOTE SECURITY	Configures software to periodically authenticate with the web-based security server.
AUTOSAVE	Detects new files moved to the flash drive and automatically backs these files up.

Note: JumpVault™ 2008 is available in two versions. Options listed above are not available on all versions. Refer to the table on Page 3 for more information about system versions and functionality.

4. LOGIN (Secure Access)



Note: Each time the JumpVault™ product is used, you will be asked to enter a password. New users will enter their desired password. It is important to remember the password entered. Failure to remember your password may result in the loss of backed up files and folders. JumpVault™ support cannot RESET, EXTRACT or CHANGE the password.

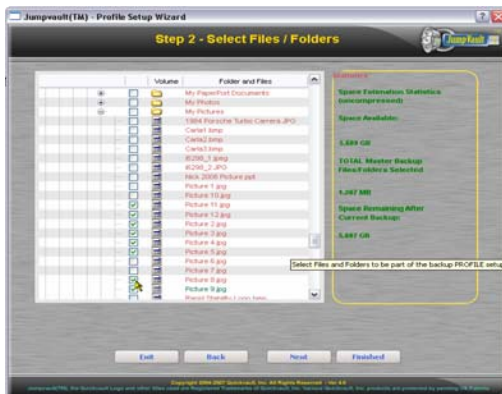
The Enhanced and Professional versions of JumpVault™ are enabled to run on more than one PC. JumpVault™ will automatically recognize the PC. The first time JumpVault is used on a new PC the software will ask you to name the PC. From this point on, JumpVault will automatically recognize the PC that it is running from.

5. PROFILES

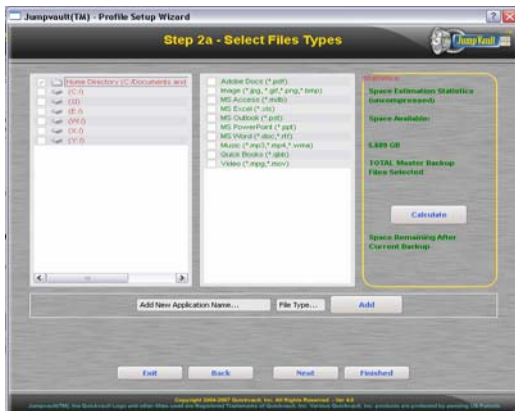
A profile is a definition of a set of information or data that you would like to backup according to a specific set of criteria or rules. There are Five Steps involved in setting up a new **PROFILE**.

Step 1 – Name the profile. Create a profile name that will be meaningful to you when you backup and later search and restore files. Examples of profile names could be: "proposals", "contracts" "word documents", "recipes" or any similar name that describes the nature of the backup

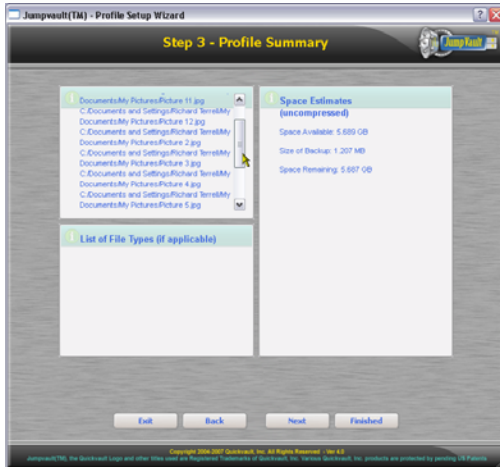
data. You can use alphanumeric characters but try to avoid using special characters (i.e. *, &, % etc.) Next select the profile backup type as either Folders or File types.



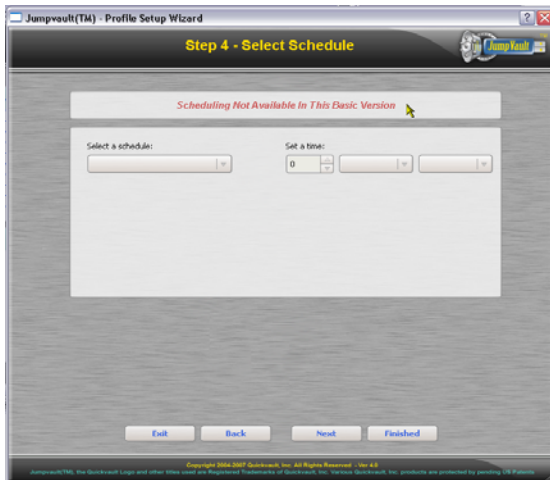
Step 2a – Specify the files and folders to be included in this backup profile definition.



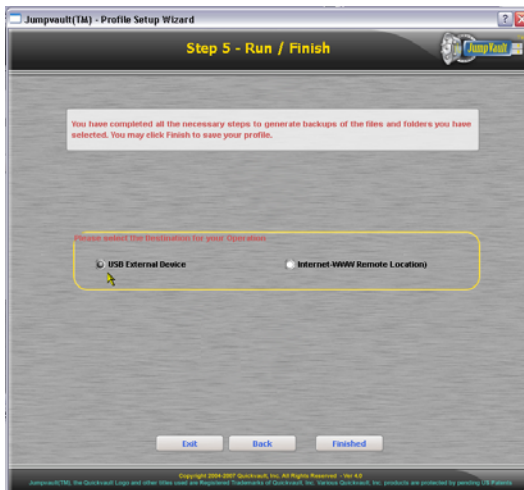
Step 2b. – As an alternative to Step 2a, you may specify the files types to be included in this backup profile definition.



Step 3 – A Profile Summary is displayed which displays a listing of all files related to this profile and the size of the backup and the estimated remaining space on the USB drive after the backup is run.



Step 4 – Select a schedule for this backup profile. (I.e. daily, weekly, monthly) Also you may specify the time of day that you wish the schedule to run.

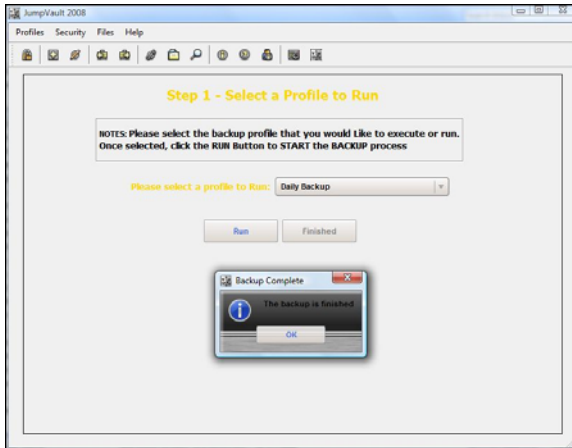


Step 5 – Specify whether this profile is to be directed to the BlackBerry / USB drive or to an offsite (Internet) location. **Note:** Internet backup will ONLY be supported on the Professional Version and is not yet available.



6. BACKUP

Backups are run automatically according to the profile schedules. In addition to automatic backup, JumpVault™ allows you to run manual or “ad-hoc” backups. To run a manual backup, simply select the name of the Profile and click the <RUN> Button.

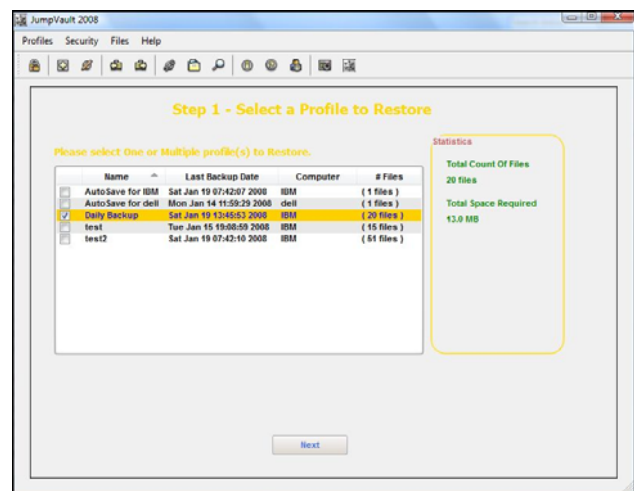


7. RESTORE

Restoring backed up files is a simple two-step process as shown below.

Step 1 – Select the name of the backup profile to RESTORE. You will also be prompted to select the date and time of the backup to use for the restoration.

Step 2 – Specify the location to restore date to. This can be a location on the same PC that the backup was created or on a different PC. **Note:** Multiple PCs are ONLY supported on the Enhanced and Professional versions.



Warning: When performing a RESTORE operation, data files can be overwritten.



8. EXPLORER

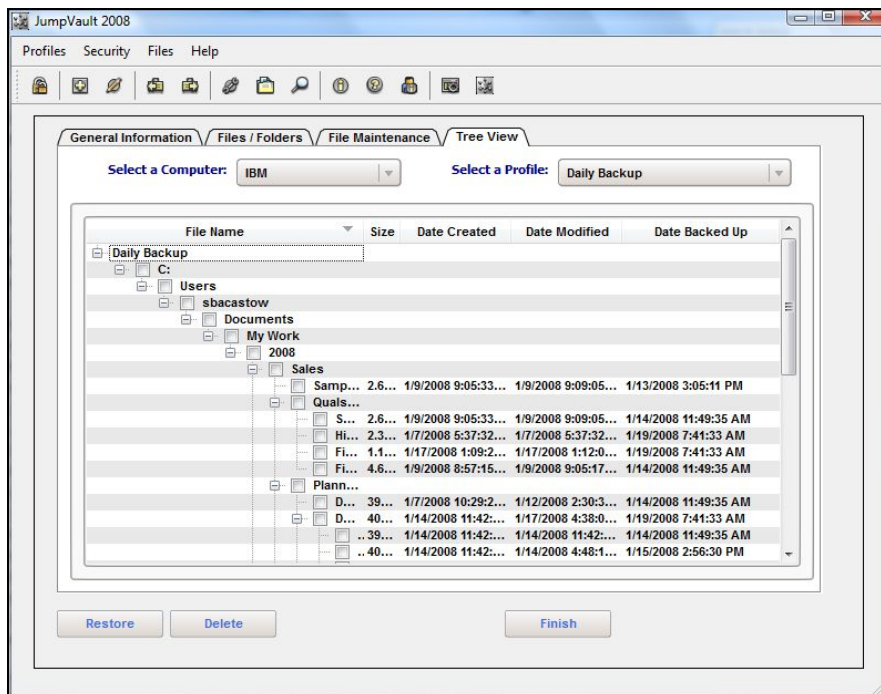
The Explorer functions allow the user to view and maintain the contents of the USB storage device. The Explorer functions may be invoked from the Maintenance, Tree View, and Search icons and consists of three primary functions which are File/Folders, File Maintenance and Tree View. Each function has a tab which can be accessed by simply clicking on it.

In addition to the three function tabs, the **General Information** Tab is used to assist the user in obtain information about functionality and new changes that are placed into the software through the upgrade/update process.

The **File/Folders** Tab is used for basic searching of files and folder information. This tab will assist the user in finding files by partial name searches, profile names, folder names, file type, originating computer, originating volume, dates, and folder names.

The **File Maintenance** Tab is used for navigation through volumes and folders to locate files by file type. The user can also use the restore and delete functions for individual files.

The **Tree View** Tab displays stored files according to the file path in the originating PC. Search selection criteria can be made by computer and profile.





9. LOGS

The Logs panel contains information about the Backup, Restoration and Events History.

9.1 Backup Tab

The Backup Log provides information relating to the Profile Name used for the specific backup operation, the Start date and time the Type of backup and the Status. The Type can be:

- User Initiated – A backup achieved through the **BACKUP** tab using the Backup Now feature.
- Scheduled – A backup achieved through the **Profile** tab using a scheduled operation.

9.2 Restore Tab

The Restore Log provides information relating to the Start date and time, Computer, Profile and Files that were restored.

- Partial – A restore achieved through the EXPLORER panel, will allow you to highlight single or multiple files to be restored.
- Revision – A restore achieved through the RESTORE panel, will allow you to select a PROFILE name for restoration.

10 PREFERENCES

10.2 *Password Tab* On this panel you can Change the password for the JumpVault™ application.

10.3 *Remote Security – See Below*

10.4 *Options – Allows the user to specify the default File Restore Directory*

11 HELP/ SUPPORT – Online Support through our Issue Management system is available at www.jumpvault.com & click on <SUPPORT> button.

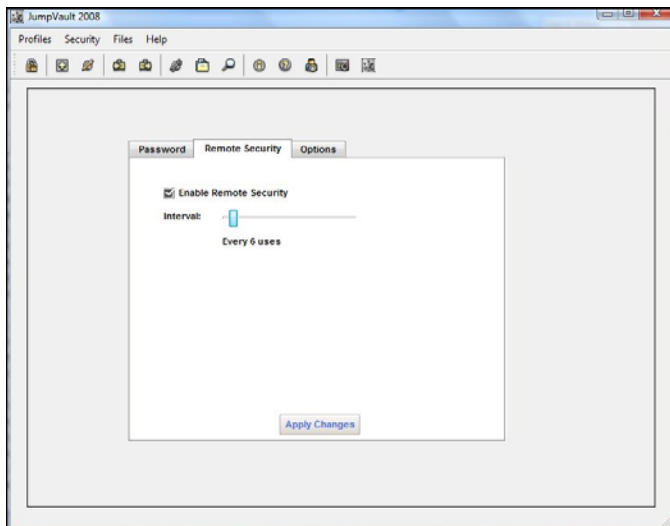


12 INTERNET SECURITY – Available ONLY in the Professional Version. This feature allows a user to configure the JumpVault™ software to perform advance security authentication.

Internet Security allows the user to configure the software to require validation when it is used based on a specific defined usage frequency (i.e. each time the software is used or every 4th time, etc.). When the configured usage frequency has been reached, the software will automatically connect to the remote authentication server and validate that the software is still activated. If there is no internet connection or if the software has been de-activated, it will not function.

– In the above scenario, the user will be provided with a user-id and password to log into the www.jumpvault.com web site. Here they will be able to update the configuration settings on their software. As a security precaution, once a product has been configured for INTERNET SECURITY, it cannot be de-activated locally. The user (**or security administrator**) must log into the www.jumpvault.com web site to affect a configuration change.

For more information about INTERNET SECURITY or to purchase, simply click on the INTERNET SECURITY function within the JumpVault product and you will be automatically directed to our web site. New security features will continue to be offered.



Note - To turn on remote security from the flash drive select the desired interval, click "enable remote security" and click "apply changes".

Warning – Once security has been enabled from the flash drive it cannot be disabled here. To disable or change settings you must log into the Internet Security Web Page <http://www.jumpvault.com/remotesecurity.php>



12. **AUTOSAVE –Available ONLY in the Professional Version.** This function will allow the user to DRAG AND DROP files and folders onto the USB flash drive where JumpVault2008 is running. JumpVault will automatically detect these files when they arrive on the flash drive and ask the user if they would like to protect these files. Enter “yes” or “no”. If yes is entered, JumpVault will securely store these files within the encrypted JumpVault database. Files may be viewed by clicking on the Profiles/AutoSave (for PC) tab.

13. ***Reset to Factory Defaults***

This option resets the JumpVault™ software application to factory default settings. Selecting this option will erase all your existing backed files in the application and reset your personal preferences to default factory settings. **Warning** - Selecting this option will erase all your existing backed files in the application and reset your personal preferences to default factory settings.

CAUTION: USE THIS OPTION ONLY AS A LAST RESORT

Once you select the YES option on the dialog box, the application will shut down and you have to restart it from the beginning in order to reuse it. You will have to enter the name and registration number again in order to register the software.