

## **Instruction Manual for 860 Series Industrial Hose Reel**

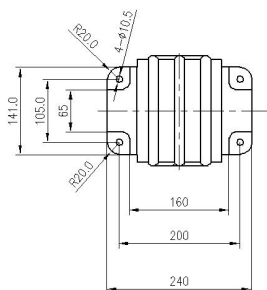
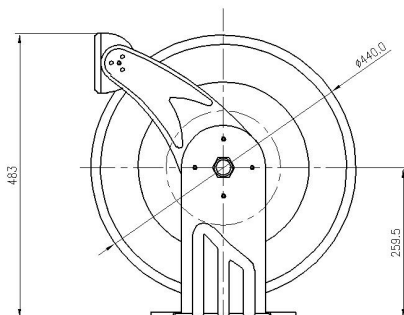


**WARNING:**

Read carefully and understand all INSTRUCTIONS before operating. Failure to follow the safety rules and other basic safety precautions may result in serious personal injury. Save these instructions in a safe place and on hand so that they can be read when required. Keep these instructions to assist in future servicing.

**Technical Details**

Item	Inlet/Outlet (Fitting)	Max Pressure (psi/bar)	Hose Capacity	
			I.D.	Max. Length
28607152 (L860152)	1/4"	300/20	1/4"	50ft/15m
28607153 (L860153)	3/8"	300/20	3/8"	50ft/15m
28607154 (L860154)	1/2"	300/20	1/2"	50ft/15m
28608152 (M860152)	1/4"	2750/189	1/4"	50ft/15m
28607153 (M860153)	3/8"	2250/155	3/8"	50ft/15m
28608154 (M860154)	1/2"	2000/138	1/2"	50ft/15m
28609152 (H860152)	1/4"	5000/345	1/4"	50ft/15m
28609153 (H860153)	3/8"	4000/276	3/8"	50ft/15m



## Safety Precautions

### GENERAL SAFETY RULES



**WARNING:** Read and understand all instructions.



**WARNING:** The warnings, cautions, and instructions discussed in this instruction manual cannot cover all possible conditions or situations that could occur. It must be understood by the operator that common sense and caution are factors which cannot be built into this product, but must be supplied by the operator.

### Hose Reel Safety Precautions

1. Use proper eye protection when assembling and using the hose reel.
2. Keep children away from the work area.



**WARNING:** Exposure of skin directly to pressurized air, or fluids could result in severe bodily injury.

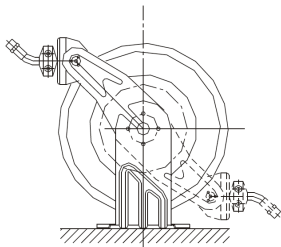
### Installation

Prior to mounting the hose reel, ensure that the supply line pressure does not exceed the maximum working pressure of the hose reel.

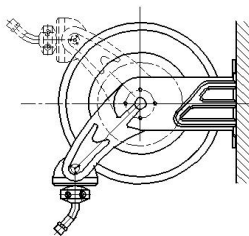
Unpack and inspect reel for damage. Turn by hand to check for smooth operation. Check for completeness.

Position the reel on the floor, wall or ceiling. Secure into place using four mounting bolts.

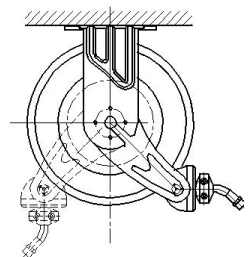
Depending on where the reel is placed, it may be necessary to adjust the hose bumper and guide arm to use the hose properly. See the instructions on the next page to adjust the hose bumper and reposition the guide arm.



Floor



Wall



Ceiling

## **Adjustments**

### **-Spring tension**

**Warning: Use extreme caution; reel under tension. Avoid releasing latch mechanism.**

If necessary, adjust spring tension on reel by adding or removing wraps of hose from spool, one wraps at a time, until desired tension is obtained. Add wraps to increase tension. Remove wraps to decrease tension.

Pull out the hose until the latch pawl is engaged. Loosen the hose bumper, then add wraps and decrease the wraps.

**Caution: When adding wraps of hose, be careful not to exceed the winding mechanism's spring capacity. Add just enough wraps of hose to achieve the desired tension.**

**Damage to the winding mechanism will result if spring is over-tensioned.**

### **-Adjusting the hose bumper**

Pull out the hose until the latch pawl is engaged. The hose bumper may be adjusted by loosening the slotted screws. Slide the bumper to the desired position and tighten the screws before pulling hose to disengage the latch pawl.

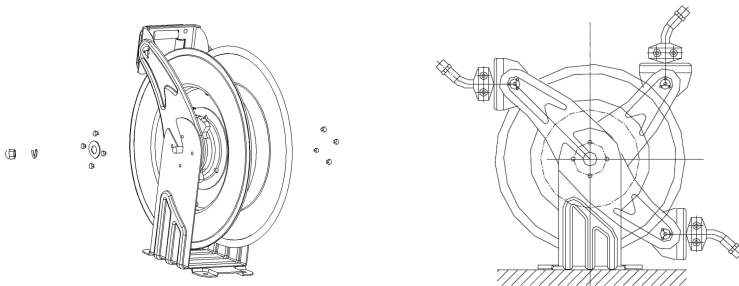
### **-Removing and positioning Guide Arm**

Pull out hose until the latch pawl is engaged. Remove bumper by removing the slotted screws.

Disengage the latch pawl while maintaining a firm hold on spool. Turn the spool hand over hand approximately two or three revolutions in the direction of the direction of the drive spring until tension is removed.

Remove the nuts and washer holding the guide arm and shift to base.

Revolute the guide arm and adjust to any of the three positions hinted.



According to each mounting application, recommend Guide Arm positions.

Replace and tighten the nuts and washers.

Tighten the drive spring by turning the spool two or three revolutions and engage the latch pawl.

Pull the hose through the roller opening in the guide arm and replace the hose bumper.

## **Service instructions**

**CAUTION:** Remove all tension before servicing. Hazards or unsafe practices *MAY* result in *minor* personal injury, product or property damage.

**Warning:** Before performing any service, always disconnect and lock out compressed air or fluid, and remove all spring tension. Hazards or unsafe practices *COULD* result in *severe* personal injury or death.

User servicing of the reel is limited to replacing input/output hoses only. Refer all other repairs to an authorized service person. Failure to do so can result in person injury and/or equipment damage and may void the warranty.

### **-Replacing the hose**

To remove the hose

Pull out the hose leaving 2 to 3 feet on the spool. Engage the latch pawl.

Unthread the hose at the connection to the swivel tube. Remove the hose.

To install the hose

Route the hose through the guide arm rollers and opening of the spool. Apply thread tape or sealant to hose threads.

Screw hose fitting into threaded fitting on swivel. Tighten connection with a wrench on fitting. Install hose bumper on working end of hose if required.

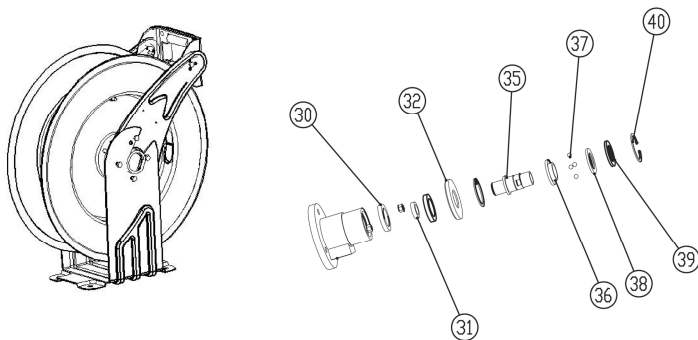
Disengage latch pawl and allow hose to retract.

### **-Replacing the swivel**

If the swivel leak, replace the O-ring or seal (#31) and washer (#30) by removing the lock washer (#40) and the part of the swivel shift.

If the balls (#37) wear-out, replace by removing the lock washer (#40).

Replace the New seal by clipping the lock washer (#40). Replace the part of the swivel shift by clipping the lock washer (#40).



### **Limited Warranty**

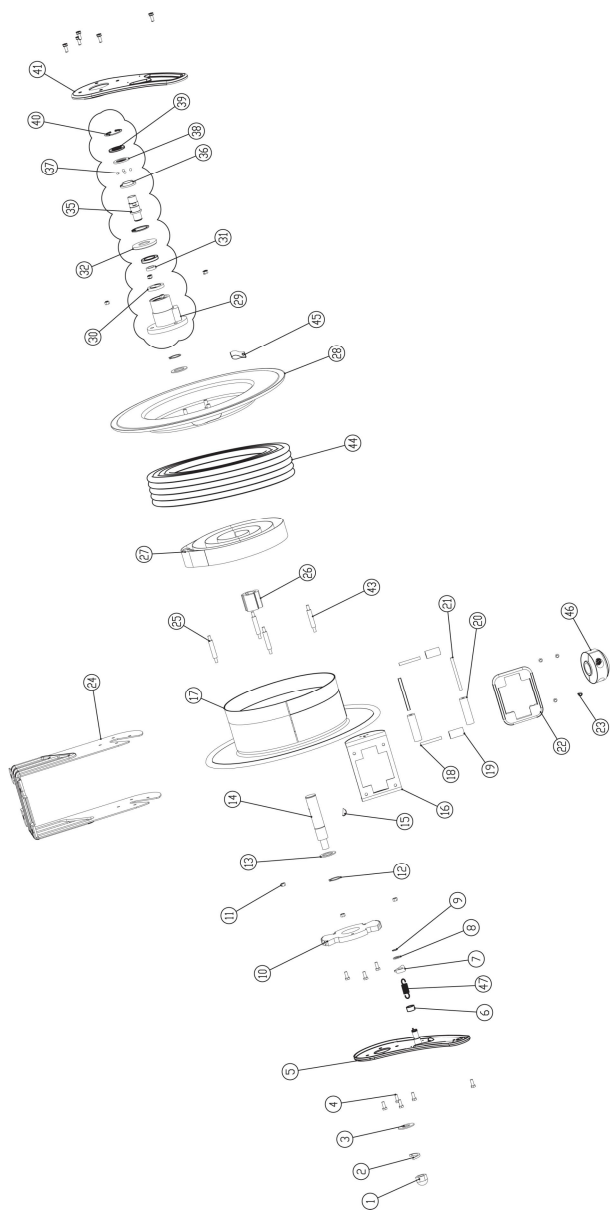
1. The manufacturer warrants this hose reel against defects in material and craftsmanship, for a period of 36 months from date of purchase, but not including hose and O-ring parts.
2. Manufacturer's liability is limited to replacement or repair of defective material within the warranty period, when returned freight prepaid to the distributor or their designated service depot.
3. The warranty does not cover damage caused by accident, misuse or faulty installation.
4. The reel must be installed and maintained in compliance with the instructions.



#### **WARNING**

Your risk from these exposures varies, depending on how often you do this type of work. To reduce your exposure to these chemicals: work in a well ventilated area, and work with approved safety equipment, such as those dust masks that are specially designed to filter out microscopic particles.

Exploded and Parts list



Part No.	Description	Q'ty	Part No.	Description	Q'ty
1	Nut	1	25	Double bolt	3
2	Spring washer	1	26	Spring core	1
3	Washer	2	27	Spring	1
4	Bolt	9	28	Drum	1
5	Bracket arm	1	29	Swivel shaft	1
6	Washer	1	30	Washer	2
7	Ratchet	1	31	O-ring or seal	1
8	Washer	1	32	Washer	1
9	Lock washer	1	33	-	-
10	Click pulley	1	34	-	-
11	Nut	8	35	Swivel shaft	1
12	Lock washer	2	36	Bearing cover	1
13	Washer	4	37	Ball bearing	17
14	Shaft	1	38	Bearing washer	1
15	Key	1	39	Washer	1
16	Guide sub-plate	1	40	Lock washer	2
17	Drum	1	41	Bracket arm	1
18	Roller axle	2	42	-	-
19	Roller	2	43	Double bolt	1
20	Roller	2	44	Hose assembly	1
21	Roller axle	2	45	Clamp	1
22	Guide plate	1	46	Stopper assembly	1
23	Bolt	4	47	Ratchet spring	1
24	Base	1			