

Always there to help you

Register your product and get support at
www.philips.com/support

BT5580/BT5880



User manual

PHILIPS

Contents

1	Important	2
----------	------------------	----------

2	Your Bluetooth speaker	3
	Introduction	3
	What's in the box	3
	Overview of the speaker	4

3	Get started	5
	Power supply	5
	Turn on	5

4	Use Bluetooth devices	6
	Connect a device	6
	Play from Bluetooth device	7
	Control your phone call	7
	Disconnect the Bluetooth-enabled device	7
	Enter Bluetooth pairing mode	7
	Connect another Bluetooth-enabled device	7

5	Other features	8
	Listen to an external device	8
	Charge your mobile devices	8
	Adjust volume	8
	Reset the speaker	8

6	Product information	9
	Specifications	9

7	Troubleshooting	10
	General	10
	About Bluetooth device	10

8	Notice	11
	Compliance	11
	Care of the environment	11
	Trademark notice	12

1 Important



Warning

- Never remove the casing of this speaker.
 - Never lubricate any part of this speaker.
 - Never place this speaker on other electrical equipment.
 - Keep this speaker away from direct sunlight, naked flames or heat.
 - Make sure that you always have easy access to the power cord, plug, or adaptor to disconnect the speaker from the power.
-
- Make sure that there is enough free space around the speaker for ventilation.
 - The battery shall not be exposed to excessive heat such as sunshine, fire or the like.
 - Use only power supplies listed in the user manual.
 - The speaker shall not be exposed to dripping or splashing.
 - Do not place any sources of danger on the speaker (e.g. liquid filled objects, lighted candles).
 - Where the plug of the Direct Plug-in Adapter is used as the disconnect device, the disconnect device shall remain readily operable.



Note

- The type plate is located on the bottom of the product.

2 Your Bluetooth speaker

Congratulations on your purchase, and welcome to Philips! To fully benefit from the support that Philips offers, register your product at www.philips.com/welcome.

Introduction

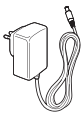
With this speaker, you can

- enjoy audio from your Bluetooth-enabled devices or other external audio devices; and
- charge mobile devices through the micro USB socket.

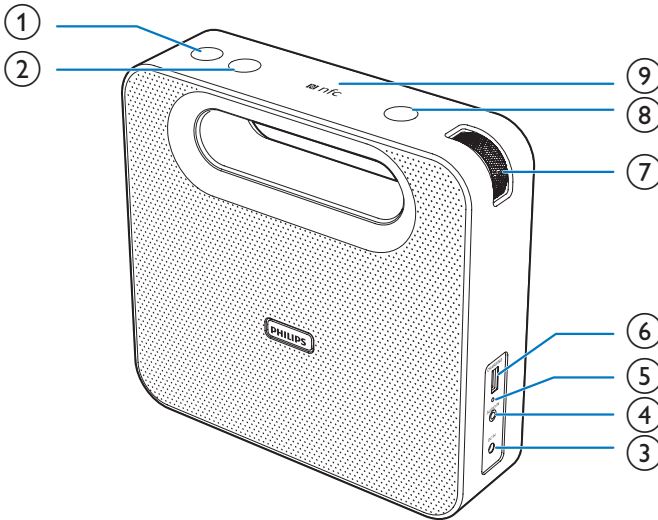
What's in the box

Check and identify the contents of your package:

- Main unit
- AC/DC adaptor
- Short user manual
- Safety and notice leaflet



Overview of the speaker



- ① **Power**
 - Turn the speaker on or off.
- ② **PAIRING**
 - Enter Bluetooth pairing mode.
 - Disconnect Bluetooth connection.
- ③ **DC IN**
 - Connect power.
- ④ **AUDIO IN**
 - Connect an external audio device.
- ⑤ **Reset**
 - Restore factory default settings.
- ⑥ **CHARGING**
 - Charge mobile devices (in AC mode).
- ⑦ **Volume knob**
 - Adjust volume.
- ⑧ **Call control**
 - Answer or reject an incoming call.
 - End the current phone call.
 - Transfer the call to your mobile device.
- ⑨ **NFC**
 - Connect a device with NFC feature through Bluetooth.

3 Get started

Always follow the instructions in this chapter in sequence.

Power supply

Either AC power or battery can be used as power supply of this product.

Option 1: Battery power

The speaker can operate on the built-in rechargeable battery.

Note

- Rechargeable battery has a limited number of charge cycles. Battery life and number of charge cycles vary by use and settings.
- When battery is low, the LED indicator flashes red.

To recharge the built-in battery:

- Connect the speaker to AC power supply.

Working mode	LED status
OFF mode	Flashing red while charging; Turned off after fully charged.
Bluetooth/ Audio-in mode	Flashing red in case of low battery; Flashing blue or solid blue (depending on Bluetooth connection status).

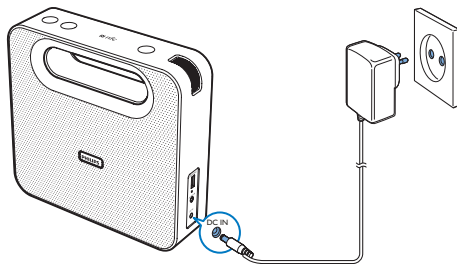
Option 2: AC power

Caution

- Risk of product damage! Make sure that the power voltage corresponds to the voltage printed on the back or underside of the speaker.
- Risk of electric shock! When you unplug the AC adaptor, always pull the plug from the socket. Never pull the cord.

Connect the power adaptor to:

- the **DC IN** socket on the speaker.
- the wall outlet.



Turn on

Press ϕ .

- ↳ The speaker switches to Bluetooth mode.
- ↳ The LED indicator flashes blue.

Note

- If battery is low, the LED indicator flashes red.

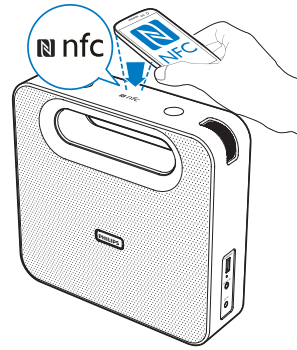
Turn off

The speaker is turned off in the following situations:

- Press ϕ again;
- The connection with Bluetooth device or other device is invalid for 15 minutes; or
- Music playback is stopped for 15 minutes.

4 Use Bluetooth devices

With this speaker, you can listen to audio from Bluetooth-enabled devices and control the incoming call through Bluetooth.



Connect a device

Note

- Make sure that your Bluetooth device is compatible with this speaker.
- Before pairing a device with this speaker, read its user manual for Bluetooth compatibility.
- The speaker can memorize a maximum of 4 paired devices.
- Make sure that Bluetooth function is enabled on your device, and your device is set as visible to all other Bluetooth devices.
- Any obstacle between this speaker and a Bluetooth device can reduce the operational range.
- Keep away from any other electronic device that may cause interference.

Option 1: Connect a device through NFC

Near Field Communication (NFC) is a technology that enables short-range wireless communication between various NFC compatible devices, such as mobile phones and IC tags.

If your Bluetooth device supports NFC, you can connect it with this speaker easily.

- 1 Enable NFC on your Bluetooth device (refer to its user manual).
- 2 Press ϕ on this speaker:
 - ↳ The LED indicator flashes blue.
- 3 Tap the NFC tag on the top of the speaker with the NFC area of your Bluetooth device.

- 4 Follow the on-screen instructions to complete the pairing and connection.
 - ↳ After successful pairing and connection, the speaker beeps twice, and the LED indicator turns solid blue.

Option 2: Connect a device manually

Note

- The operational range between this speaker and a Bluetooth device is approximately 10 meters (30 feet).

- 1 Press ϕ .
 - ↳ The LED indicator flashes blue.
- 2 On your Bluetooth device, enable Bluetooth and search for Bluetooth devices that can be paired (see the user manual of the device).
- 3 When **[Philips BT5580]** or **[Philips BT5880]** is displayed on your device, select it to start pairing and connection. If necessary, input "0000" as the pairing password.
 - ↳ After successful pairing and connection, the speaker beeps twice, and the LED indicator turns solid blue.

Play from Bluetooth device



Note

- If there is an incoming call on the connected mobile phone, music play pauses.

After successful Bluetooth connection, play audio on the Bluetooth device.

- ↳ Audio streams from your Bluetooth device to the speaker.

Control your phone call

After Bluetooth connection, you can control an incoming call with this speaker:

Button	Function
	Press to answer an incoming call.
	Press and hold to reject an incoming call.
	During a call, press to end the current call.
	During a call, press and hold to transfer the call to your mobile device.

Disconnect the Bluetooth-enabled device

- Press and hold **PAIRING** for two seconds;
- Disable Bluetooth on your device; or
- Move the device beyond the communication range.
 - ↳ The LED indicator flashes.

Enter Bluetooth pairing mode

Press and hold **PAIRING** for two seconds.

Connect another Bluetooth-enabled device

Disable Bluetooth on the current device, and then connect another device.

5 Other features

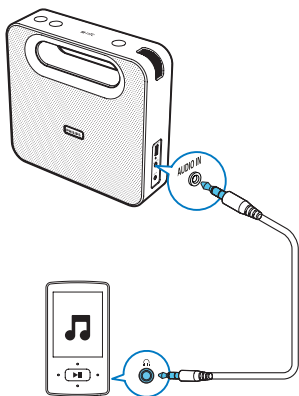
Listen to an external device

With this speaker, you can also listen to an external audio device such as an MP3 player.

Note

- Make sure that music playback through Bluetooth is paused.

- 1 Connect an audio input cable (not supplied) with a 3.5 mm connector on both ends to
 - the **AUDIO IN** socket on this speaker,
 - and
 - the headphone socket on the external device.



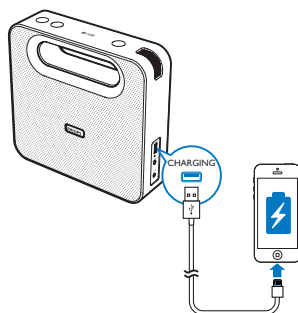
- 2 Play audio on the external device (refer to its user manual).

Charge your mobile devices

You can charge your mobile devices through the **CHARGING** socket.

Note

- The USB socket is for charging only.



In AC power supply mode, connect to your mobile device with a USB cable (not supplied).

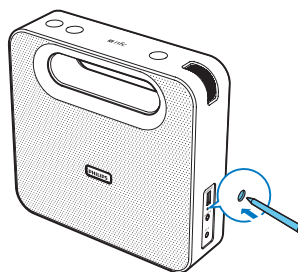
- ↳ Once the device is recognized, the charging starts.

Adjust volume

Rotate the volume knob to increase or decrease the volume.

Reset the speaker

If the system works abnormally, reset the speaker to factory default settings.



Press the reset button with the tip of a pen or toothpick.

- ↳ All settings are reset to factory default.

6 Product information



Note

- Product information is subject to change without prior notice.

Specifications

Amplifier

Rated Output Power	10W RMS (BT5580); 12W RMS (BT5880)
Signal to Noise Ratio	> 62 dBA
AUX Input	600 mV

Bluetooth

Bluetooth Version	V4.0
Supported Profiles	HFP, A2DP, AVRCP
Range	10 m (Free space)

General information

Power Supply	
- AC Power (power adapter)	Brand name: PHILIPS; Model: OH- 1024A1202000U-VDE; Input: 100-240V~, 50/60 Hz, 650 mA; Output: 12V = 2 A;
- Battery	Li-ion battery (2200 mAh)
Charging Voltage and Current	5V = 1 A
Operation Power Consumption	AC 24 W
Dimensions - Main	
Unit (W x H x D)	210 x 201 x 55 mm
Weight - Main Unit	1.4 kg

7 Troubleshooting



Warning

- Never remove the casing of this device.

To keep the warranty valid, never try to repair the system yourself.

If you encounter problems when using this device, check the following points before requesting service. If the problem remains unsolved, go to the Philips Web page (www.philips.com/support). When you contact Philips, make sure that the device is nearby and the model number and serial number are available.

General

No power

- Make sure that the AC power plug of the unit is connected properly.
- Make sure that there is power at the AC outlet.
- Recharge your speaker.

No sound or poor sound

- Adjust volume on the product.
- Adjust volume on the connected device.

No response from the speaker

- Disconnect and reconnect the power plug, then turn on the speaker again.
- Press the reset button with the tip of a pen or toothpick to restore factory settings.

Cannot charge mobile devices

- Make sure that AC power is connected properly.
- Make sure that there is power at the AC outlet.

About Bluetooth device

The audio quality is poor after connection with a Bluetooth-enabled device.

- The Bluetooth reception is poor: Move the device closer to this product or remove any obstacle between them.

Cannot connect with the device.

- The Bluetooth function of the device is not enabled. Refer to the user manual of the device for how to enable the function.
- This product is already connected with another Bluetooth-enabled device. Disconnect that device and then try again.

The paired device connects and disconnects constantly.

- The Bluetooth reception is poor: Move the device closer to this product or remove any obstacle between them.
- For some devices, Bluetooth connection may be deactivated automatically as a power-saving feature. This does not indicate any malfunction of this product.

8 Notice

Any changes or modifications made to this device that are not expressly approved by WOOX Innovations may void the user's authority to operate the equipment.

Compliance

CE 1177

Hereby, WOOX Innovations declares that this product is in compliance with the essential requirements and other relevant provisions of Directive 1999/5/EC. You can find the Declaration of Conformity on www.philips.com/support.

Care of the environment

Disposal of your old product and battery



Your product is designed and manufactured with high quality materials and components, which can be recycled and reused.



This symbol on a product means that the product is covered by European Directive 2012/19/EU.



This symbol means that the product contains a built-in rechargeable battery covered by

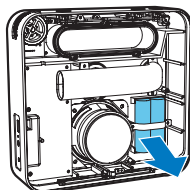
European Directive 2013/56/EU which cannot be disposed of with normal household waste. We strongly advise you to take your product to an official collection point or a Philips service centre to have a professional remove the rechargeable battery. Inform yourself about the local separate collection system for electrical and electronic products and rechargeable batteries. Follow local rules and never dispose of the product and rechargeable batteries with normal household waste. Correct disposal of old products and rechargeable batteries helps prevent negative consequences for the environment and human health.



Caution

- Removal of the built-in battery invalidates the warranty and may destroy the product.

Always bring your product to a professional to remove the built-in battery.



Environmental information

All unnecessary packaging has been omitted. We have tried to make the packaging easy to separate into three materials: cardboard (box), polystyrene foam (buffer) and polyethylene (bags, protective foam sheet.)

Your system consists of materials which can be recycled and reused if disassembled by a specialized company. Please observe the local regulations regarding the disposal of packaging materials, exhausted batteries and old equipment.

Trademark notice

Bluetooth

The Bluetooth® word mark and logos are registered trademarks owned by Bluetooth SIG, Inc. and any use of such marks by WOOX Innovations is under license.



The N Mark is a trademark or registered trademark of NFC Forum, Inc. in the United States and in other countries.



This is CLASS II apparatus with double insulation, and no protective earth provided.



2014 © WOOX Innovations Limited. All rights reserved.

Philips and the Philips' Shield Emblem are registered trademarks of Koninklijke Philips N.V. and are used by WOOX Innovations Limited under license from Koninklijke Philips N.V.

BT5580_BT5880_12_UM_V2.0

