

1. Introduction

CyeWeb is the newest generation IP/analogue Intelligent Video Surveillance (IVS) software with easy-to-use user interface and state-of-the-art video content analysis, the main aim of the system is to enable your surveillance system not only capturing a video, but also detect and stop threatening activity in an early stage as it happens.

This guide will show you how to get start in using CyeWeb and will cover the most common features include: **recording**, **playback** and **basic motion detection**.



2. System Requirement

Basic Requirement	Recommendation
Microsoft Windows XP with SP2/ Windows Vista (*1)	Microsoft Windows XP with SP2 (*1)
Display adapter with 128 MB memory or above (*2, *3)	Display adapter with 256 MB memory
512MB system memory	2GB system memory
10GB free hard disk space	100GB free hard disk space
Microsoft DirectX 9.0c or above	Microsoft DirectX 9.0c or above
Microsoft .Net Framework 3.0	Microsoft .Net Framework 3.0

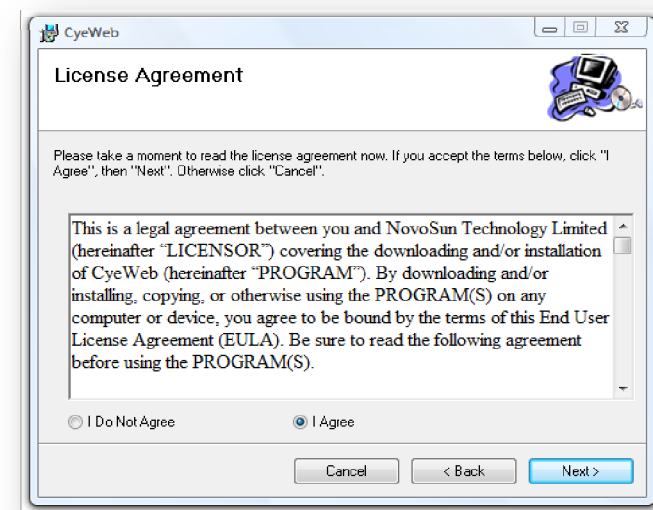
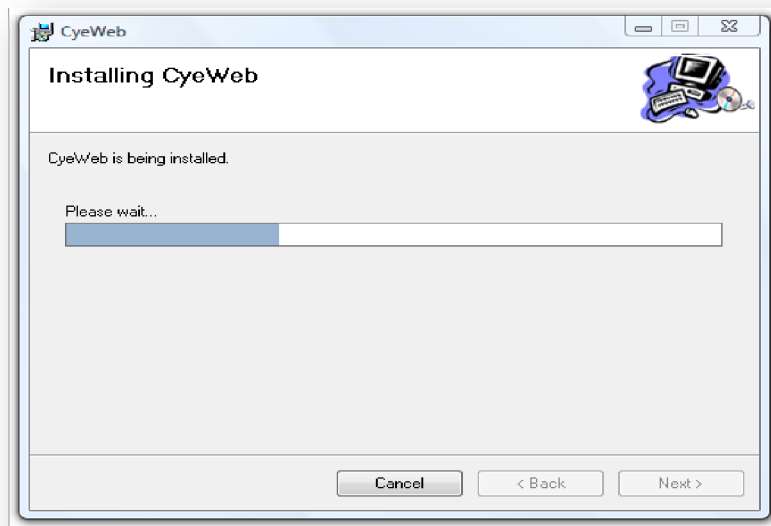
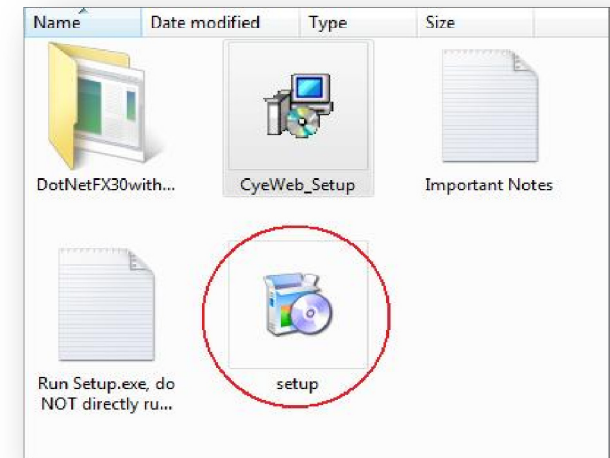
*1: CyWeb is developed under Windows Vista so it is 100% compatible with Vista

*2: Display adapter plays a very important role to the performance of CyWeb. An adapter with good 2D performance and enough video memory will be a good match with CyWeb. Please note that 2D matters more than 3D so your adapter needs not to be expensive.

*3: If you use on-board display adapter, please remember to configure your display memory to the largest possible size. Some mother board set the display memory size to a very low value by default.

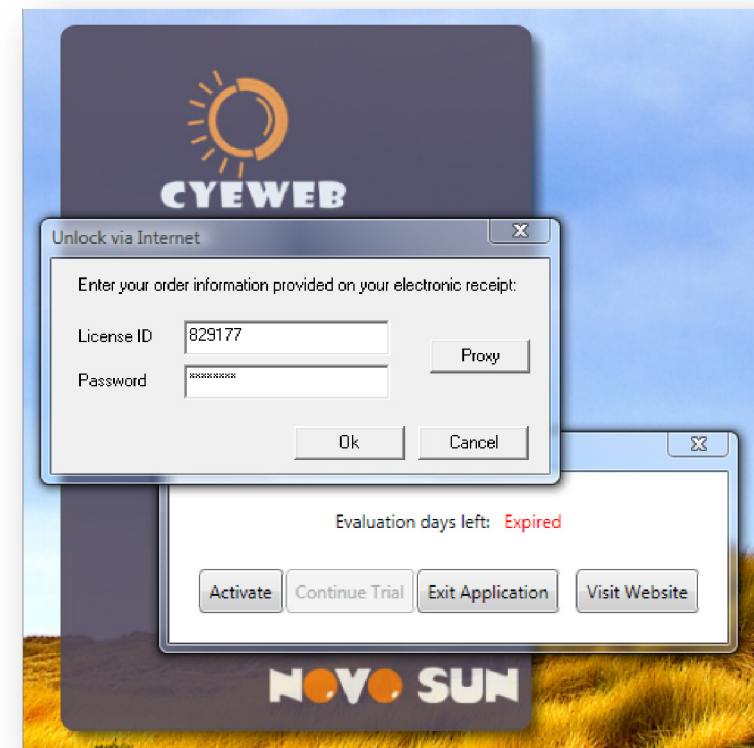
3. Installation

- ◆ CyWeb requires **Microsoft.Net Framework 3.0** pre-installed. You can download this component from Microsoft's website, or let CyWeb Installer to download and install it for you.
- ◆ Run **Setup.exe**, do NOT directly run CyWeb_Installer.msi.
- ◆ Check the license agreement box, and select the installation folder, then the installation process will begin after your confirmation.
- ◆ The installer would take some time to install and configure Windows Media components at the end of the installation. The whole process would take 5 to 10 minutes, so please be patient.



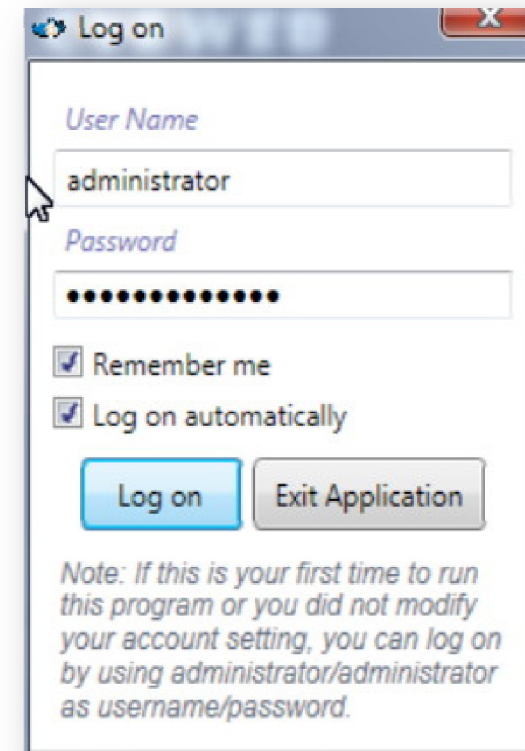
4. License Activation

- ◆ Program will start automatically after installation.
- ◆ The CyeWeb installation package from NovoSun website gives you 14 days of trial period.
- ◆ Launch the program, click “Continue Trial” button then you can use the trial version.
- ◆ After the trial period, you have to purchase a license and activate the program.
- ◆ To purchase a license, please visit [NovoSun Online Store](http://www.novosun.com) or contact our [distributors](#) in your region.

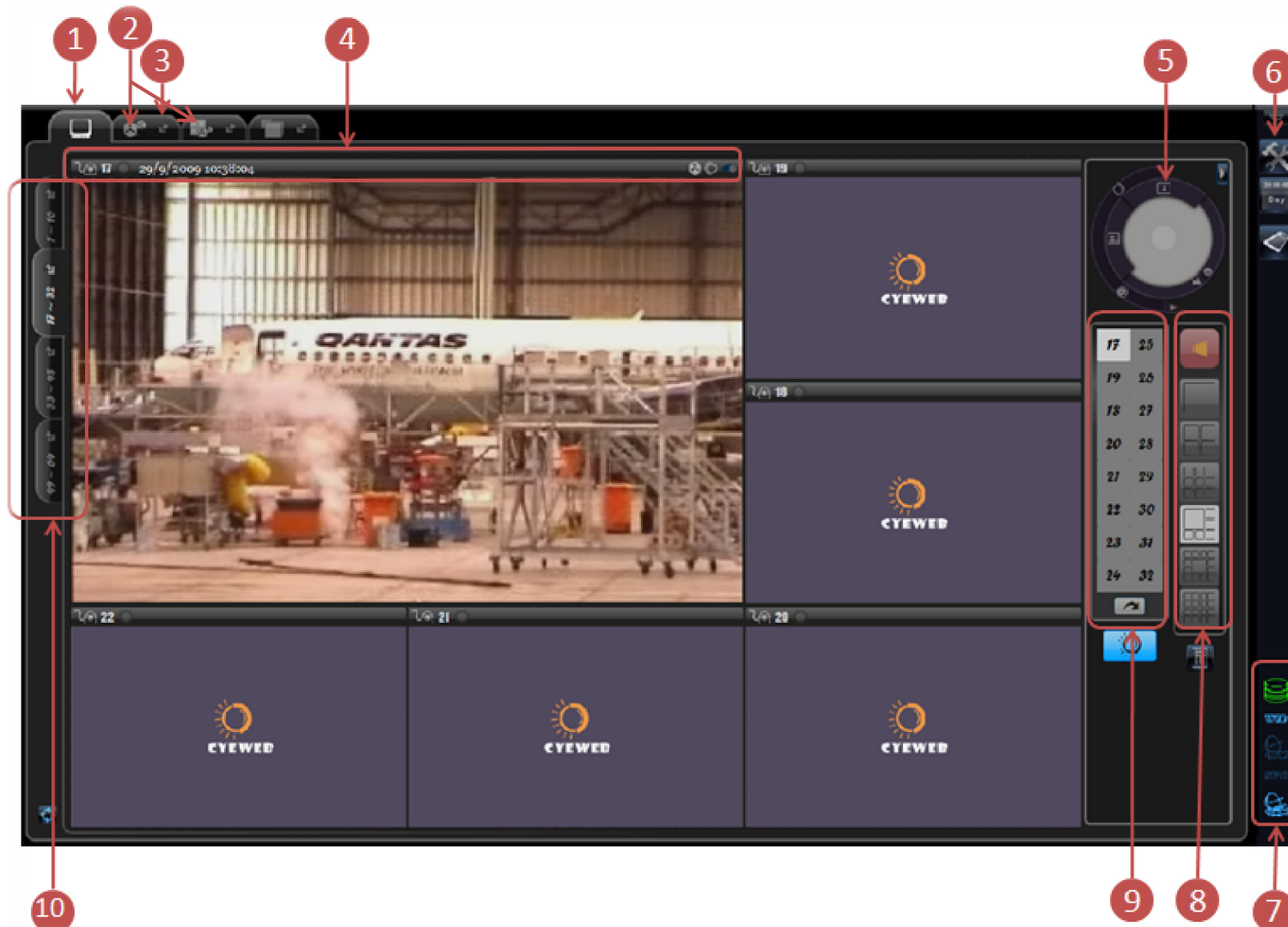













5. Log on

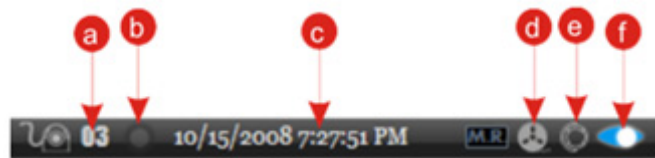
- ◆ When you start the program, a log on dialog would show up.
- ◆ You should logon with an account you defined in CyWeb (Note: **NOT** your license id or password).
- ◆ If this is your first time to run the program or you did not modify your account setting, you can log on by using **administrator/administrator** as username/password.
- ◆ To create your own account, please refer to “**Account Management**” chapter in user’s manual.







6. Main Screen



- 1) **Preview and main controls** – real-time video preview and main controls.
- 2) **Basic Playback and Timeline Playback.**
- 3) **Float-out** – float out a tab-view. The floated-out window can be moved to another monitor. This feature is useful for users using multiple monitors.
- 4) **Channel control bar** – a bar to show information and hold control buttons for a channel.
- 5) **PTZ Controller** – here you can control the PTZ device which bound to the main channel.
- 6) **Open setting dialog.**
- 7) **Program state indicator** – CyWeb currently has 5 indicators:
 - a) Storage Capacity: Health , Low , or Empty 
 - b) Windows Media Broadcast: Active  or Inactive 
 - c) CyWeb Video Server: Active  or Inactive 
 - d) Http Web Server: Active  or Inactive 
 - e) Net Service: Active  or Inactive 




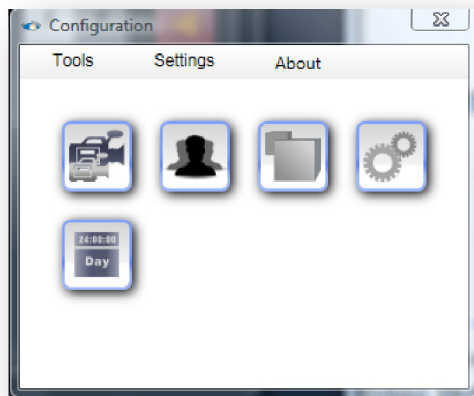
- (a) Channel number
- (b) Alarm Indicator – tell you whether alarm occurred.
Left-click on this icon can reset the indicator: Normal , Alarm 
- (c) Date and time of the current video in local time zone
- (d) Instant Playback
- (e) Show up PTZ controller
- (f) Run/stop channel – Stopped , Running 


- 8) **Screen division selectors.**
- 9) **Main channel selectors** – here you can select the main channel.
- 10) **Channel group selectors** – CyWeb has 4 preset channel groups: 1-16, 17-32, 33-48, 49-64. Channel group can float out as a standalone window.

7. Connect to Capture Source

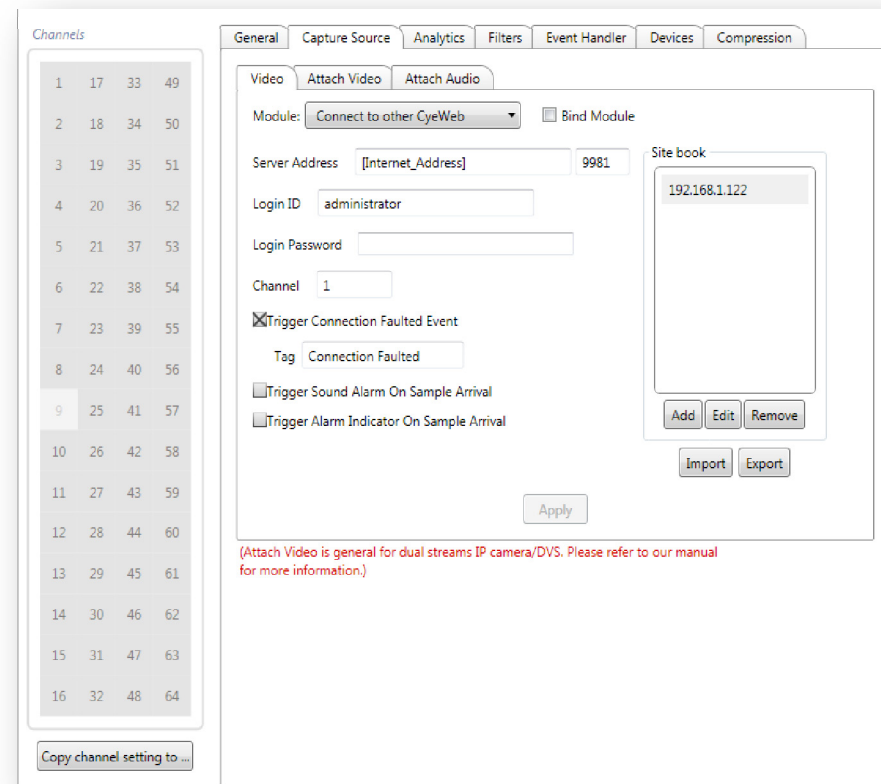
- ◆ CyeWeb supports hybrid video and audio source. This means your USB-webcam, PCI/PCI-E capture card, hardware compression card, IP Camera, Windows Media Stream, remote CyeWeb..., etc can be connected on the same system.

- ◆ To connect a capture source, press the  button and open the configuration dialog:



- ◆ Click the  button to open the channel setting dialog

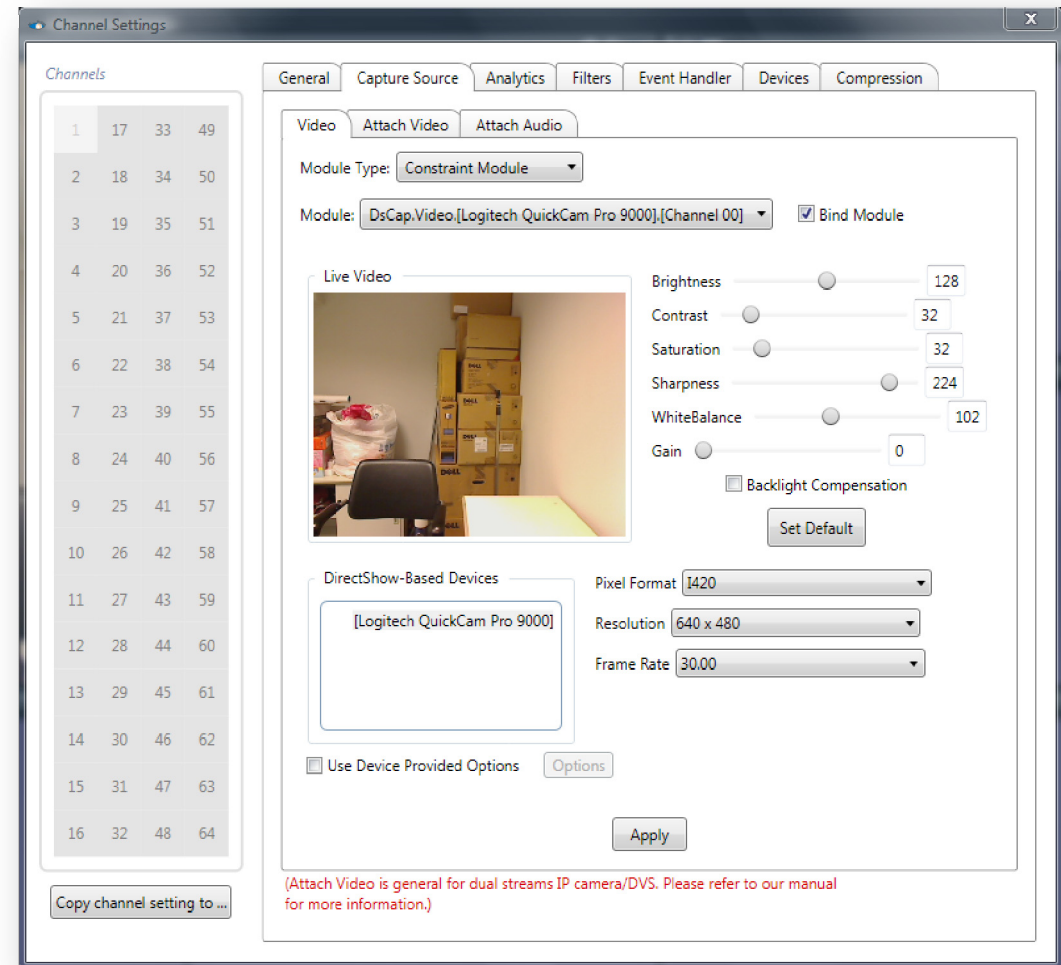
- ◆ Choose the “Capture Source” tab:



- ◆ Select a corresponding channel in the channel selector at left hand side to setup the capture source.

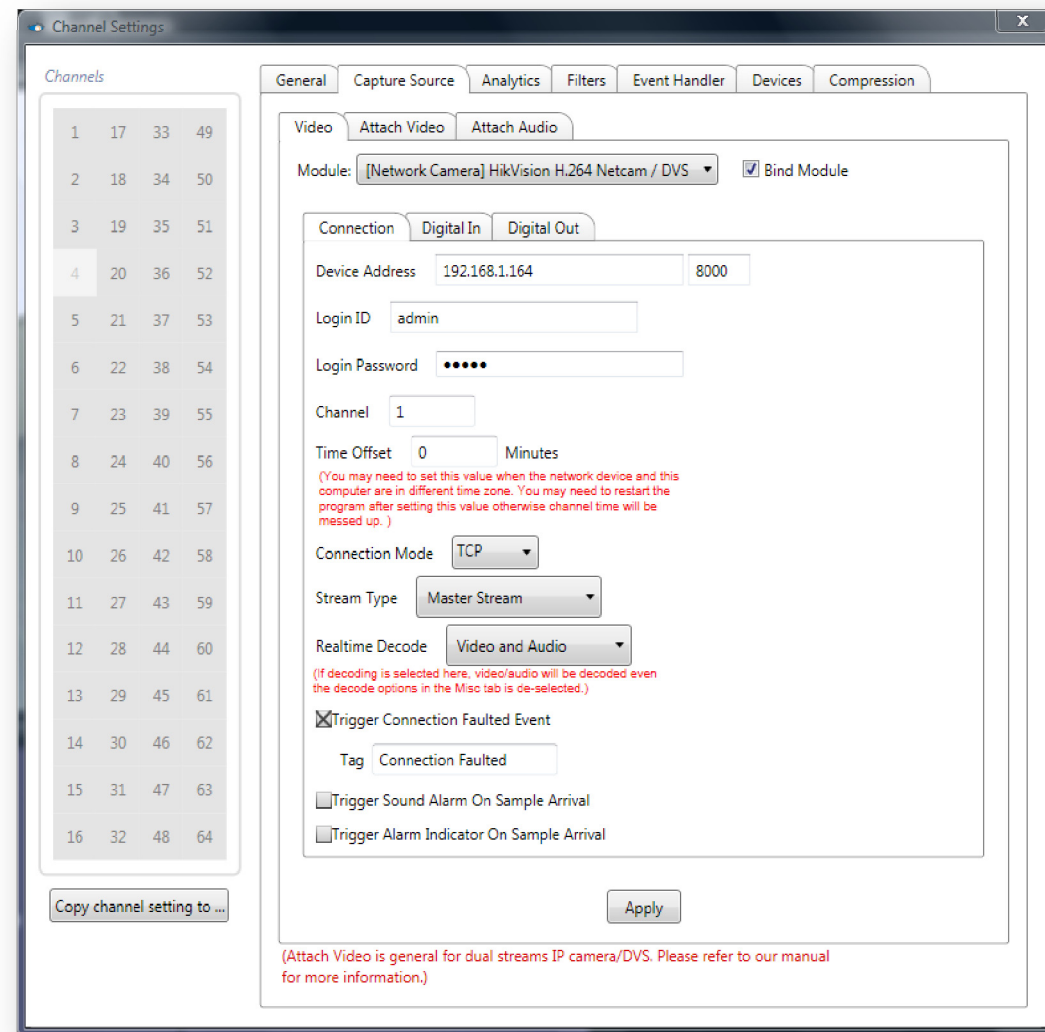
Connect to a capture card or USB-Webcam

- ◆ In the “Module Type” combo box, select the “**Constraint Module**”.
- ◆ In the “Module” combo box, select the capture card and input port or webcam you want to connect.
- ◆ Check the “**Bind Module**” checkbox.
- ◆ Now you should be able to see the video.
- ◆ If you checked “Bind Module” but no video show up, you may check “**Use Device Provided Options**”.



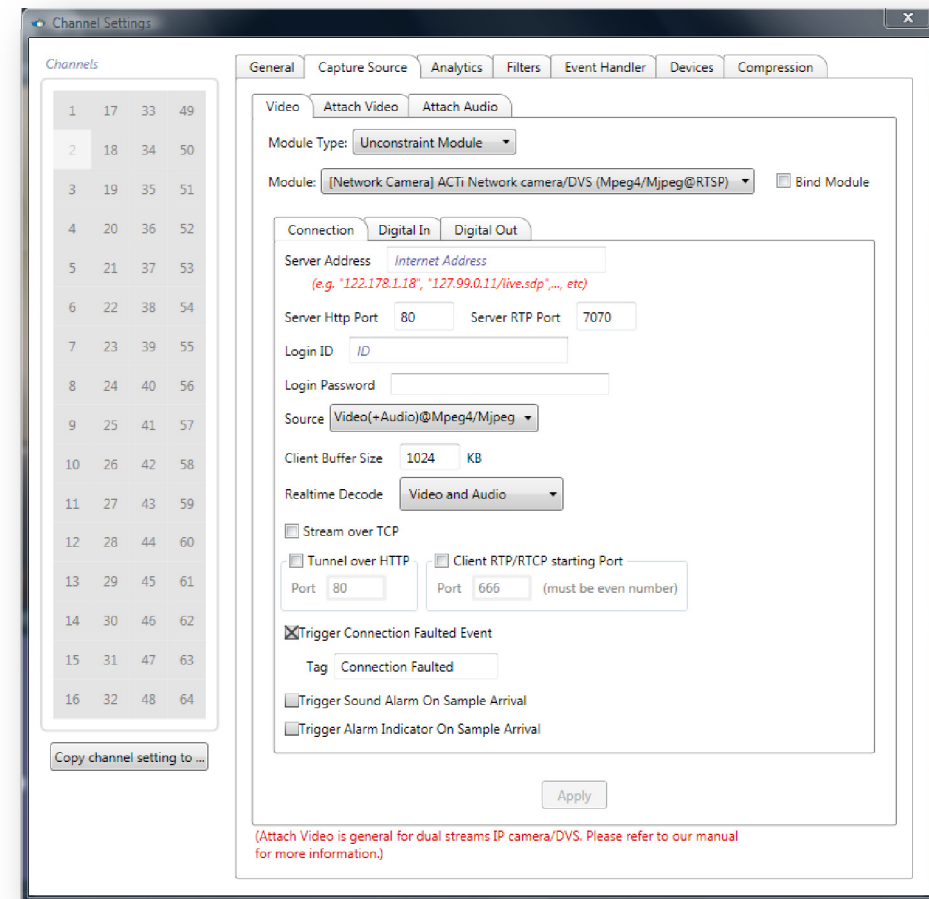
Connect to a HikVision Network Camera

- ◆ In the “Module Type” combo box, select the “**Unconstraint Module**”.
- ◆ In the “Module” combo box, select the network camera you want to connect, e.g. “**HikVision H.264 Netcam/DVS**”.
- ◆ Fill in the **Server address**, the **Login ID** and **Password** you setup in your camera.
- ◆ Check the “**Bind Module**” checkbox. Now you should be able to see the video.



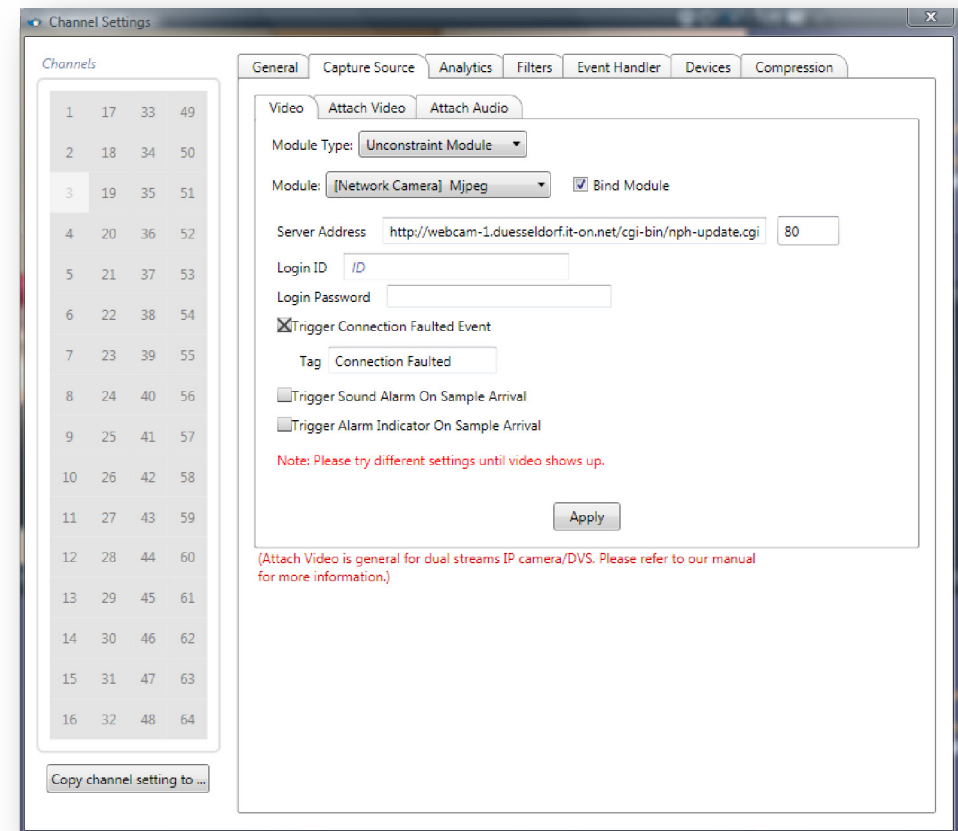
Connect to Camera via RTSP

- ◆ In the “Module Type” combo box, select the **“Unconstraint Module”**.
- ◆ In the “Module” combo box under “Unconstraint Module”, please select the camera, e.g., **“[Network Camera] ACTi Network camera/DVS (Mpeg4/Mjpeg@RTSP)”**.
- ◆ Configure inside your camera to stream via “RTP over UDP” (under the video setting).
- ◆ In CyWeb's setting dialog, please enter the **Server Address** and **Server Port**.
- ◆ Check the “Bind Module” checkbox. Now you should be able to see the video.



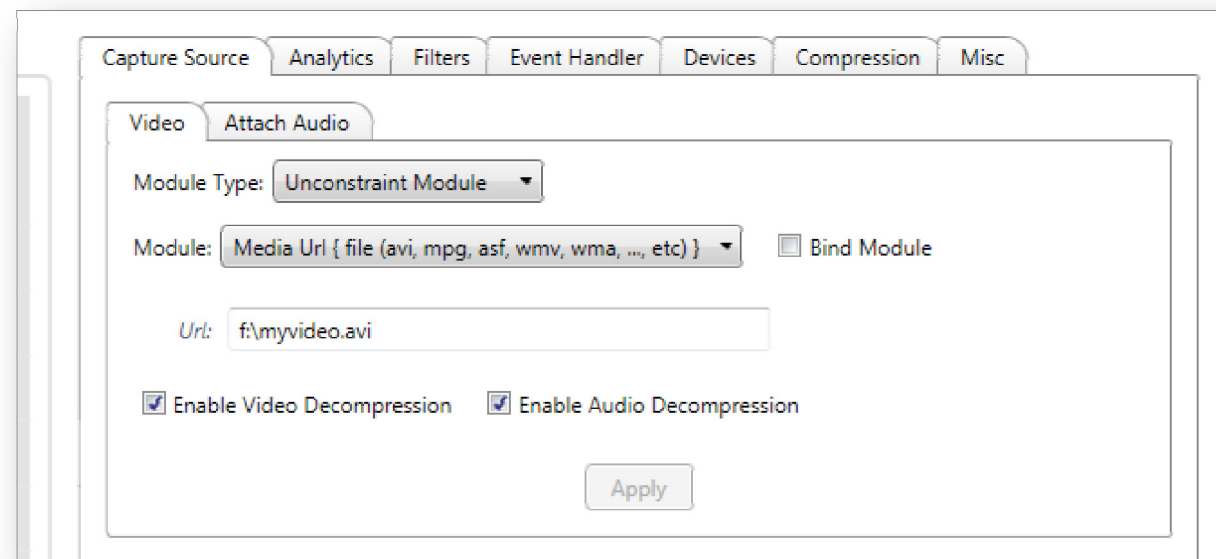
Connect to an MJPEG Compatible IP Camera

- ◆ In the “Module Type” combo box, select the “**Unconstraint Module**”.
- ◆ In the “Module” combo box, select the camera, e.g. “[**Network Camera**] **Axis Camera** (**Jpeg/Mjpeg**)”.
- ◆ Fill in the **Server address**. You should refer to the instruction manual of your IP camera for the URL of the MJPEG stream, or you can write a message to the vendor for the URL. Most IP camera has that URL.
- ◆ Check the “Bind Module” checkbox. Now you should be able to see the video.



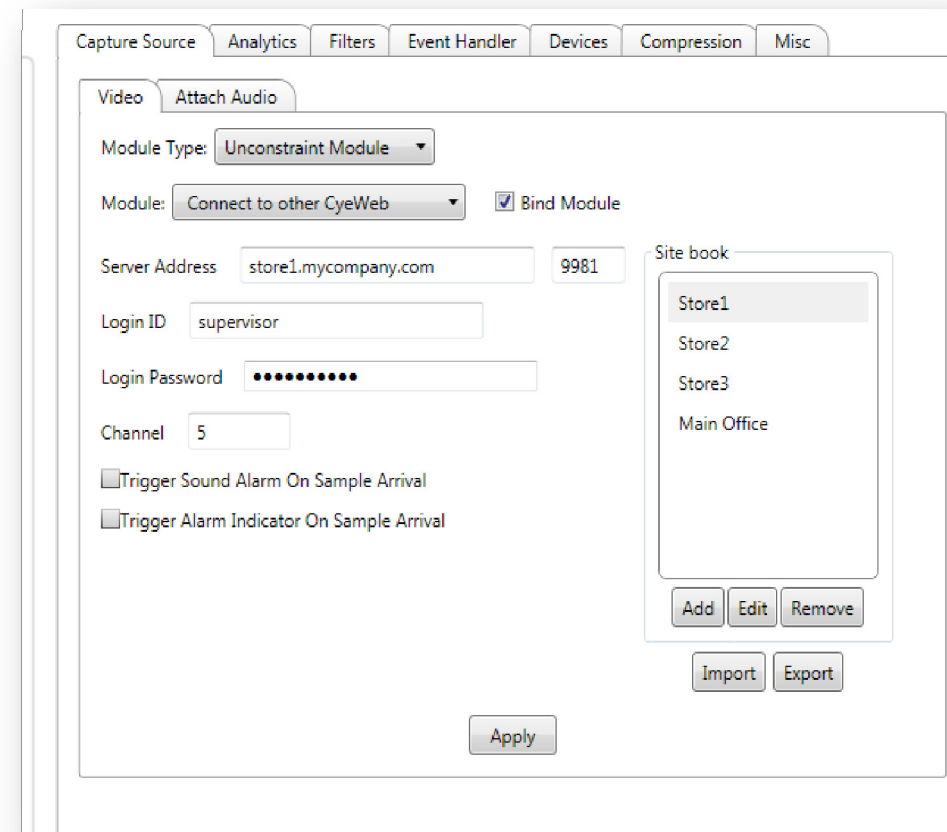
Connect to Media URL Source

- ◆ In the “Module Type” combo box, select the “**Unconstraint Module**”.
- ◆ Please select “Media Url {file (avi, mpg, asf, wmv, wma, ..., etc)}”.
- ◆ Fill in the URL address and check the “**Bind Module**” checkbox. Now you should be able to see the video.
- ◆ NOT all media file formats are supported. Only those formats (such as AVI, ASF, MPG..., etc) with corresponding DirectShow filter would work.



Connect to Other Cyeweb

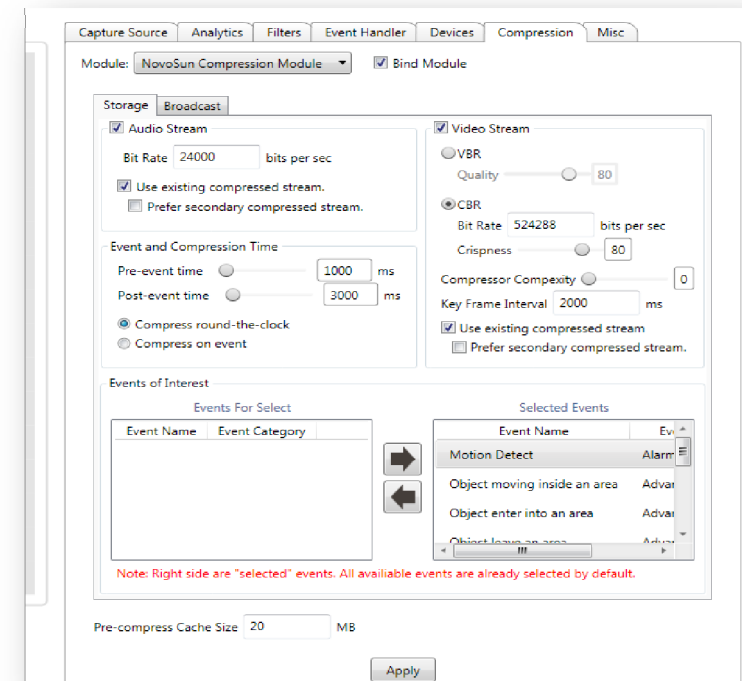
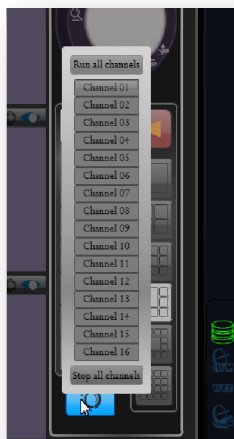
- ◆ This module allows you to connect to a remote CyWeb Video Server.
- ◆ In the “Module Type” combo box, select the “**Unconstraint Module**”.
- ◆ In the “Module” combo box under, please select “**Connect to other CyWeb**”.
- ◆ Input the port number. Please note that the port number must match that of the Video Server setting in the remote CyWeb.
- ◆ Enter the “**Login ID**” and “**Login Password**” must match an account you created on the remote side and that account must also have the “**Remote Connection to Video Server**” permission..
- ◆ Enter the remote channel number you want to connect.
- ◆ Check the “Bind Module” checkbox. Now you should be able to see the video.



The screenshot displays the NovoSun CyWeb configuration window with the 'Video' tab selected. The 'Attach Audio' sub-tab is also visible. The 'Module Type' is set to 'Unconstraint Module'. The 'Module' dropdown is set to 'Connect to other CyWeb', and the 'Bind Module' checkbox is checked. The 'Server Address' is 'store1.mycompany.com' and the 'Port' is '9981'. The 'Login ID' is 'supervisor' and the 'Login Password' is masked with dots. The 'Channel' is set to '5'. There are two checkboxes: 'Trigger Sound Alarm On Sample Arrival' and 'Trigger Alarm Indicator On Sample Arrival', both of which are unchecked. On the right, there is a 'Site book' list containing 'Store1', 'Store2', 'Store3', and 'Main Office'. Below the list are 'Add', 'Edit', and 'Remove' buttons. At the bottom right are 'Import' and 'Export' buttons. A large 'Apply' button is at the bottom center.

8. Setup Recording

- ◆ The channel to setup must first connect to a **capture source**.
- ◆ Open the configuration dialog, and click the channel setting, you should see the channel setting dialog. Choose the “**Compression**” tab.
- ◆ Check the “**Bind Module**”.
- ◆ **Run** all channels or run the channel you just configured. Under the Main Console, click the **Run Channel** button. You should see a popup menu to run all or some channels.
- ◆ Now you should be able to see the new recording file on Playback system.



Note: You may need to press the refresh button on Playback system to show up the new file.

9. Timeline Playback

- ◆ Here you can access recorded videos with a 24-hour (down to second) timeline and date control. All video/audio from different channels can be played synchronously in negative and positive speed.

1) **Channel Control Bar**

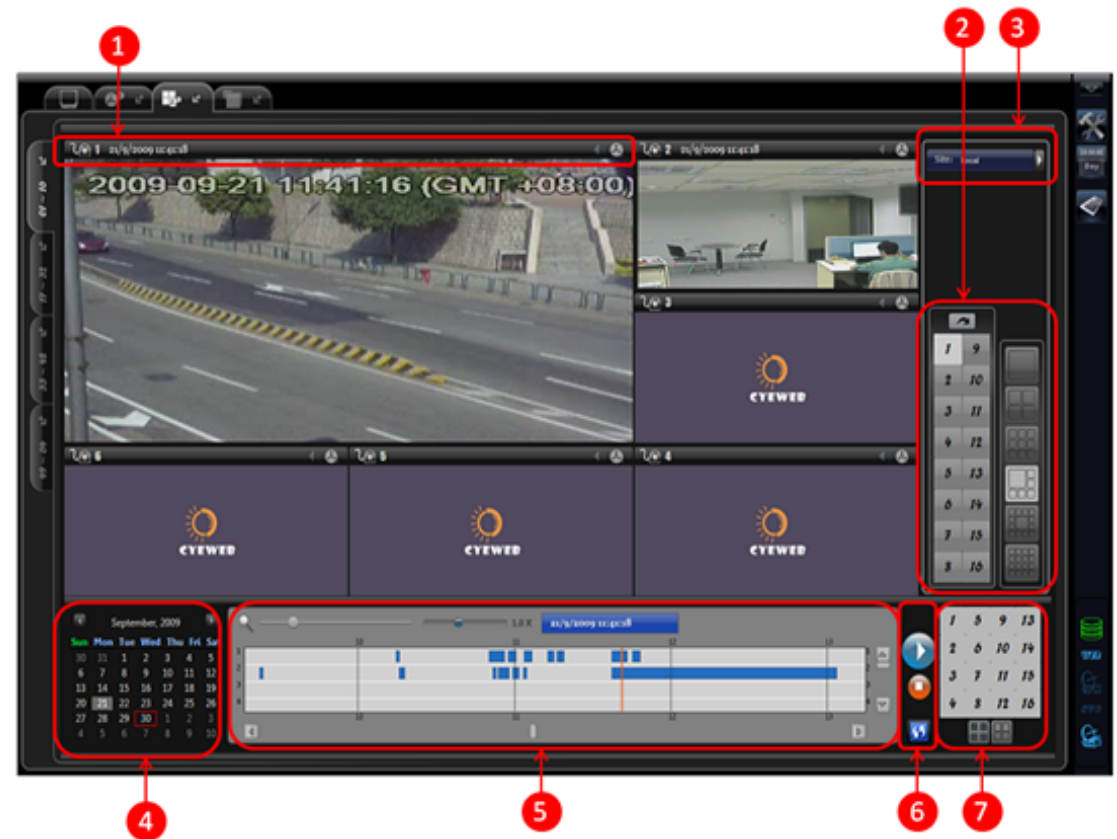
Here you can enable/disable the audio of the playing media or popup a normal playback window for that media.

2) **Channel and screen division control**

Here you can select the main channel and screen division mode, and reset the channel arrangement (please note that you can arrange the channels by drag-and-drop on the video screens.)

3) **Site Selection**

Here you can login other sites for remote playback over IP. The default is local. You can also build your site book for some frequent-use sites. The remote site to login must bind the Net Service module. The login account in the remote site must also have the permission to access net service.



4) **Date selection control**

5) **Timeline control**

Here you can locate the time (from hour to second) and control the playback speed (fast forward, normal or rewind). You can zoom the time down to second with a slider bar or with your mouse-wheel.

6) **Media control**

Here you can play and stop the medias, as well as you can refresh the channels:



- "play" button



- "stop" button



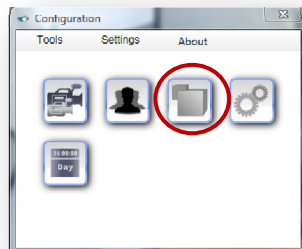
- "refresh" button

7) **Enable/disable channels**

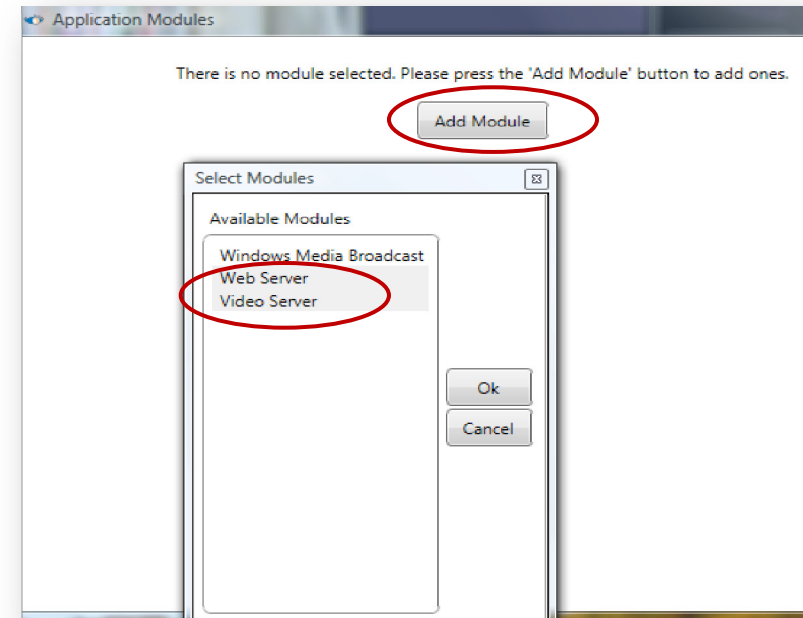
Here you can enable and disable the playback channels.

10. Web Broadcast

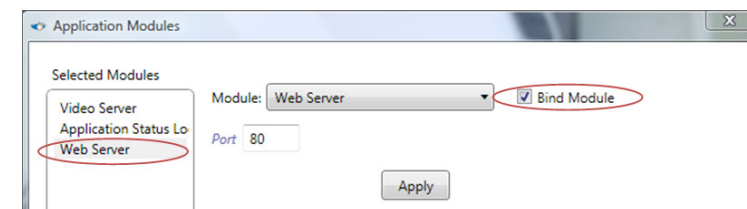
- ◆ This example shows you how to setup HTTP and Video Server for remote viewing.
 - ◆ The channel to be viewed remotely must first connect to a capture source and bind to a “Compression Module” (please refer to “**Connect to Capture Source**” and “**Setup Recording**”).
1. Run the channels that you want to webcast. (please refer to “**Setup Recording**”)
 2. Open the configuration dialog, and click the **application module** button



3. You should see the application module setting dialog. Click the “**Add Module**” button, and add the **web** and **video server**.



4. Check the “**Bind Module**” checkboxes on the Web Server and Video Server.



- Now you should see the Web and Video Server Indicators lighting up on the Main Console:




- Open your Microsoft IE, key in your computer's Internet address (for more information of your Internet address, please refer to the [FAQ #5 ~ 7](#)). IE would prompt you to install an ActiveX control. Please install it.
- Fill in the ID/Password with "administrator"/"administrator" and click the "Connect" button.

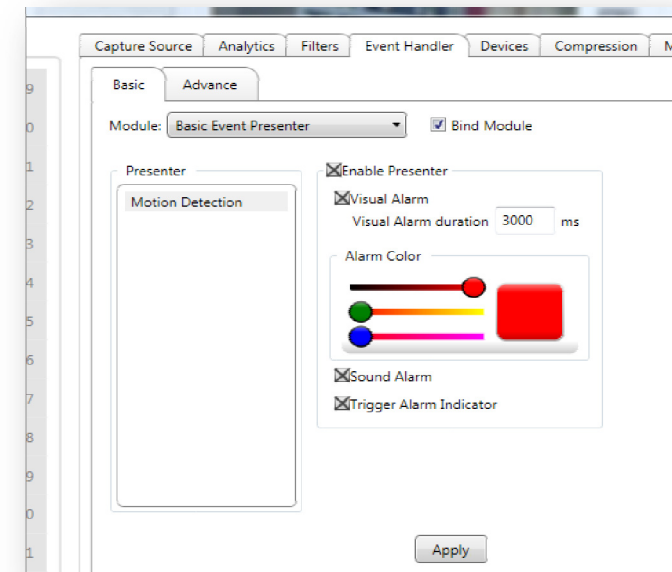
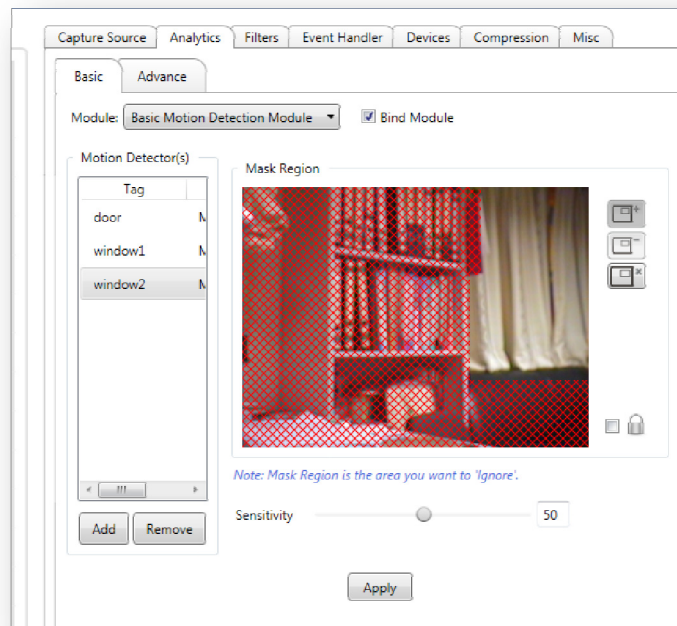


Now you have successfully setup and test your Video and Web server.

Note: If you see the web interface but you cannot see video after clicking the "Connect" button, the computer to connect may not have Microsoft WVC1 codec installed. Please refer to [FAQ #6](#).

11. Setup Basic Motion Detection


- I. The channel to setup must first connect to a capture source.
- II. Open the configuration dialog, and click the channel setting, you should see the channel setting dialog. Choose the “**Analytics**” tab.
- III. Check the “**Bind Module**”.
- IV. If you need to mask some areas in the video, click the  button, mask the area you want to **ignore** and then click “Apply”.
- V. The detector will be more sensible to the change of video content when a higher sensitivity value is set.
- VI. Under the “**Event Handler**” Tab, enable the “**Basic Event Presenter**” and check “**Bind Module**”.



- VII. **Run** the channel.

Now you have successfully setup motion detection and its presenter.

Points for Attention

- ◆ CyeWeb only supports windows XP **with** SP2 and Windows Vista.
- ◆ Select the corresponding channel before you change any setting of a channel.
- ◆ Click the “Apply” button after you change any setting of a channel.
- ◆ Always check the “Bind Module” box whenever you want to use the module.
- ◆ Channel must be running otherwise the modules you selected will not be active.
- ◆ To run a channel, please click the  icon contained in the main screen.
- ◆ The masked regions in Motion Detection are those you want to ignore.
- ◆ Alarm indicator will be active only if you bind the “Basic Event Presenter”.

***For further information please refer to User’s Manual
or visit our website <http://www.novosun.com> .***