

ThinFax 336E
Data Traveler 336E
User's Manual

Copyright ©1997
EXP Computer, Inc.and EXP Memory Products.
All right reserved.

1.0 Edition, August, 1997

No part of this publication may be reproduced, stored in a retrieval system or transmitted in any form or by any means, mechanically, electronically, photocopying, or recording without the prior written consent of EXP Computer Inc. and EXP Memory Products.

All trademarks and registered trademarks are of their respective companies.

The information in this publication has been carefully checked and is believed to be accurate as of its publication date. EXP will not be held responsible for any inadvertent errors. All information in this publication is subject to change without notice.

EXP Computer, Inc.

141 Eileen Way
Syosset, NY 11791
USA

TEL: (516) 496-7629

FAX: (516) 496-2914

BBS: (516) 496-3753

EXP Memory Products.

12-C Mauchly
Irvine, CA 92718
USA

TEL: (714) 453-1020

FAX: (714) 453-1319

INTERNET:www.expnet.com

TABLE OF CONTENTS

Copyright and Trademark information	iv
Program License Agreement	viii
Warranty Information.....	ix

1

INTRODUCTION

Features	1
----------------	---

2

INSTALLATION

System Requirements.....	3
Hardware Installation	3
Verification	5
Testing the Modem	7

3

USING THE THINFAX ON A NOTEBOOK COMPUTER

Windows 95	10
Enable 32bit Card Support for Windows 95.....	13
DOS and Windows 3.xx	15
Hardware Installation	15

TABLE OF CONTENTS (Cont.)

FCC Compliance Statements

FCC Part 68	
FCC Part 15.....	

**EXP Computer, Inc.
EXP Memory Products.
Program License Agreement**

READ THE FOLLOWING TERMS AND CONDITIONS CAREFULLY BEFORE OPENING THE PACKAGE OR OPERATING THE EQUIPMENT. BY OPENING THE PACKAGE OR OPERATING THE EQUIPMENT INDICATES YOUR ACCEPTANCE OF THESE TERMS AND CONDITIONS. IN THE EVENT THAT YOU DO NOT AGREE TO THESE TERMS AND CONDITIONS, PLEASE RETURN THE PACKAGE UNOPENED. YOUR MONEY WILL BE REFUNDED.

LICENSE

This program may be used on a single computer. The program may be copied to any machine-readable for backup purposes to support your use of the program on a single computer.

YOU MAY NOT USE, COPY, MODIFY, OR TRANSFER THE PROGRAM, OR ANY COPY, MODIFICATION OR MERGED PORTION OF THE PROGRAM, IN WHOLE OR IN PART, EXCEPT AS EXPRESSLY PROVIDED FOR IN THIS LICENSE. IF YOU TRANSFER POSSESSION OF ANY COPY, MODIFICATION OR MERGED PORTION OF THE PROGRAM TO ANOTHER PARTY, YOUR LICENSE IS AUTOMATICALLY TERMINATED.

LIMITATION OF LIABILITY

IN NO EVENT WILL EXP BE LIABLE FOR ANY DIRECT, INDIRECT, SPECIAL, INCIDENTAL, OR CONSEQUENTIAL DAMAGES, INCLUDING LOSS OF PROFIT, LOSS OF SAVINGS, OR ANY OTHER DAMAGES CAUSED BY PRODUCT OR FAILURE OF THE PRODUCT TO PERFORM.

This limitation of liability applies even if EXP has been advised of the possibility of such damages. Some states do not allow the exclusion or limitation in incidental or consequential damages, so the above exclusion or limitation may not apply to you.

**EXP Computer, Inc.
EXP Memory Products.
Non-transferable Limited Warranty**

EXP Computer Inc., and EXP Memory Products ("EXP") warrant that the Products manufactured or distributed by EXP to be free from failures due to defects in materials or workmanship for the three years of the products.

This warranty is void if the Product is damaged by abnormal or improper use or by accident, abuse or if any attempt to repair or modify the Product without authorization from EXP. Your sales receipt or invoice, showing the date of purchase and the name of the Authorized EXP Reseller, is your proof of the date of purchase. During the warranty period, EXP will at its option, replace or repair, at no charge, the Product that in its opinion is defective.

Before you return the failed Products, contact EXP. You must obtain a Return Merchandise Authorization (RMA) number by calling EXP Computer Inc. at (516) 496-7629. The RMA number should be displayed on the outside of the returned package and on the accompanying packing list. EXP cannot be held responsible for any package returned without the RMA number. You are responsible for packaging, providing proof of the date of purchase and the shipping cost of the failed product to EXP Computer, Inc. You are responsible for mailing the Warranty Registration Card. The warranty claims may not be honored if there is no corresponding registration card on file at EXP.

IN NO EVENT, WILL EXP BE LIABLE FOR ANY DIRECT, INDIRECT, SPECIAL, INCIDENTAL OR CONSEQUENTIAL DAMAGE, INCLUDING LOSS OF PROFIT, LOSS OF SAVINGS; OR ANY OTHER DAMAGES CAUSED BY PRODUCT OR FAILURE OF THE PRODUCT TO PERFORM.

This limitation of liability applies even if EXP has been advised of the possibility of such damages. Some states do not allow the exclusion or limitation in incidental or consequential damages, so the above exclusion or limitation may not apply to you.

INTRODUCTION

Thank you and welcome to our next generation of the ThinFax modem card for WINDOWS CE H/PC. This User's Manual explains in detail how to install, and how to operate the ThinFax modem cards. The following product is covered in this manual:

ThinFax 336E (Data/Fax Modem)
Data Traveler 336E (ThinFax name will be used on this manual)

ThinFax cards has a maximum speed of 33,600 bps. The ThinFax 336E has an external battery pack. The battery pack supplies necessary power to operate the card at high speed with out any burden to the Windows CE H/PC main battery. The following item are included in this package.

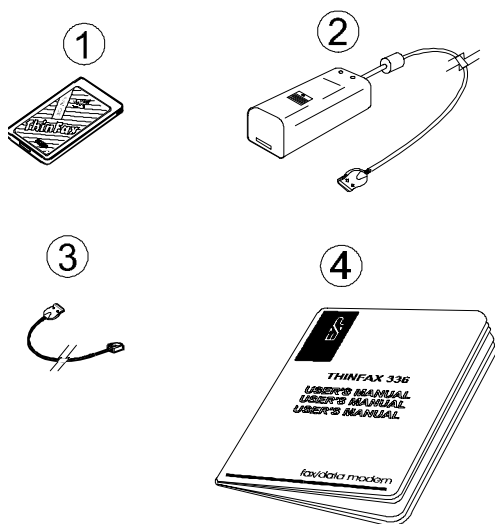


Figure 1 Package Contents

Package Contents

1. The ThinFax 336E PC Card.
2. External battery pack. (battery not included)
3. Telephone interface cable with RJ-11 Jack
4. This User's manual

If any of these items is missing, please notify your dealer.

ThinFax 336E can also be used with a standard notebook computer equipped with a PC Card (PCMCIA 2.10) slot. Users need a set of PC Card (PCMCIA 2.10) device driver(s) with DOS-Based or WINDOWS-Based software to utilize Data/Fax function.

FEATURES

- ☐ The external battery pack for extending use of the card. Requires two AA size battery (not included)
- ☐ PC Card (PCMCIA 2.10) Type II Card size, 54.0 mm x 85.6 mm x 5.0 mm
- ☐ Data speed up to 33,600 bps
- ☐ Data mode protocols:

CCITT	V.34, V.32bis, V.32, V.22bis, V.22, and V.21
Bell	103 and 212A
- ☐ Error correction: V.42, MNP 2-4
- ☐ Data compression: V.42bis, MNP5
- ☐ Send and receive Fax speed up to 14,400 bps.
- ☐ Fax mode protocols:

CCITT	V.17, V.29, V.27ter, and V.21 Ch. 2
EIA/TIA 578	Class 1, Class 2

 Fax Group III compatible.
- ☐ Automatic power save mode

Why should you use the battery pack?

A simple answer is the battery pack allows you to operate the ThinFax 336E card longer than other manufacturer's PC Cards. The current modem operation requires high-speed connection which will drain the main battery in your Windows CE HP/C without a backup battery source. Some of the HP/C also hve a limited current supply through its PC Card slot, the battery pack will help you to over come the limitations.

INSTALLATION

This section contains information that you need to install a ThinFax 336E for the WINDOWS CE H/PC, including how to insert and remove the card and how to test the modem's installation with Terminal program.

Note1: To prolong the WINDOWS CE H/PC 's battery life, the following procedure should be observed:

If possible, use an AC Adapter whenever the ThinFax modem card is plugged into the WINDOWS CE H/PC.

Use the external battery pack, if you plan to use the card for extended period while on the H/PC's battery power.

SYSTEM REQUIREMENTS

Most of the Windows CE H/PC have a limited current supply to the PC Card slot. This limitation may vary among different manufacturers. Thus, we recommend using the ThinFax card with the external battery pack attached.

Hardware Installation

Note: Do not insert or remove the PCMCIA card when the WINDOWS CE H/PC power is on. The illustration shows a typical PC Card slot location. Check your H/PC users manual for more detail.

Inserting the Card

Hold the card with the EXP logo on the top. Slide the card into the slot located at a side of the WINDOWS CE H/PC. (See Figure 2)



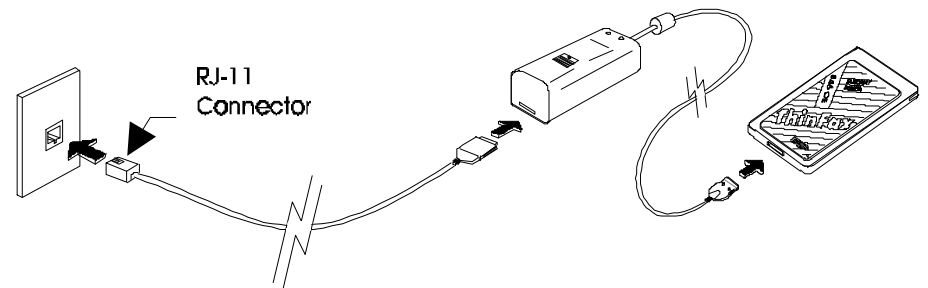
Figure 2 PC Card slot location

Removing the Card

Close all applications that have open file on the card. Turn off the HPC. Push the eject button which is usually located on one side of the PC Card slot.

Connecting the ThinFax 336E parts together

The following figure illustrate how to connect all the ThinFax 336 components



together.

Figure 3 ThinFax Components

Installing batteries

The external battery pack requires two AA size batteries. These batteries will supply the necessary current needed by the ThinFax 336 series card. You may also use Ni-Cad rechargeable batteries, which have a shorter service life. Neither the rechargeable batteries nor charger is providing with this package. Figure 4.

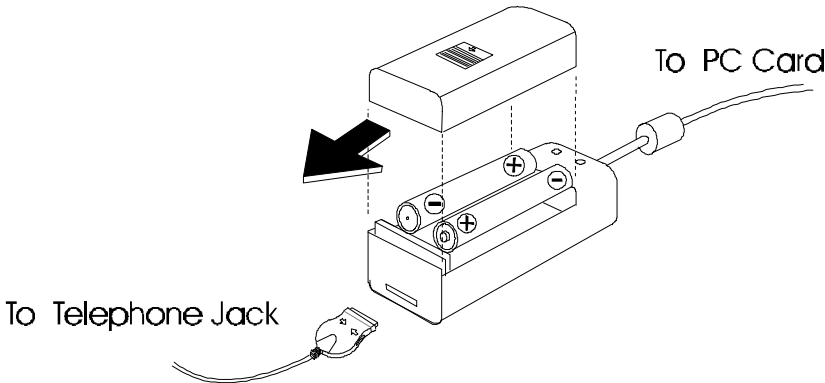


Figure 4 Battery Pack

Verification

ThinFax 336E

There is no software installation needed for this card. Windows CE has a built-in device driver to support a Data/Fax modem. Tap on “My Handheld PC”, “Control Panel”. The Control Panel appears as below.

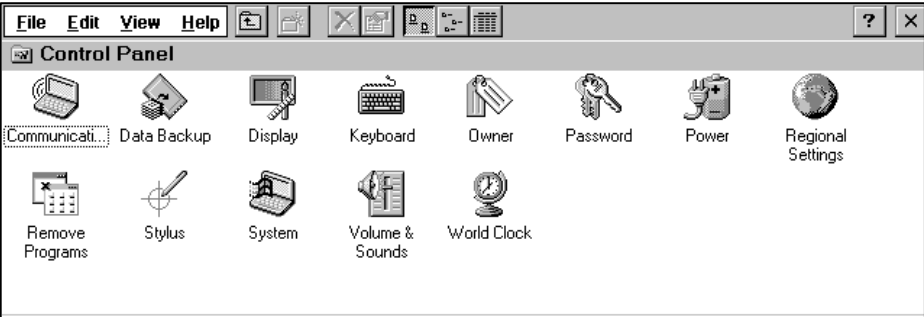


Figure 5 Control Panel

Tap on the “system” Icon. The System Properties, PC Card Category should have the ThinFax 336E listed.

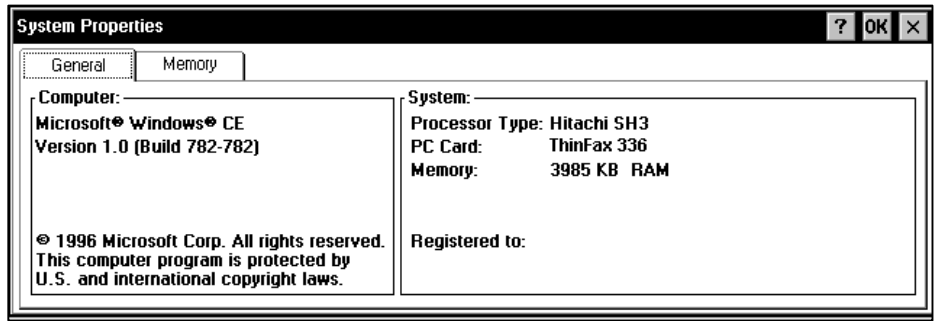


Figure 6 System Properties

If you did not see the ThinFax 336E card, turn off the H/PC and reseal the card to make sure it is fully inserted.

Testing the Modem

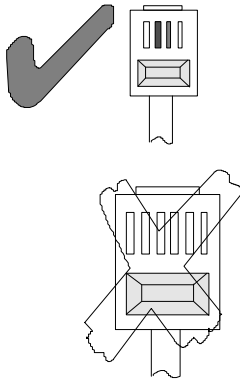
ThinFax 336E

This section provides information on how to verify the modem functionality using the built-in Terminal program in Windows CE H/PC.

NOTE:

What type of telephone line is yours? Analog or Digital?

Check your telephone line, as the ThinFax 336 can be connected to an **ANALOG Line ONLY!** (Normal house-hold line)



Terminal program

To start the Terminal you need to tap on My Handheld PC, then Program Files, and then Communication. The H/PC should show the following screens.

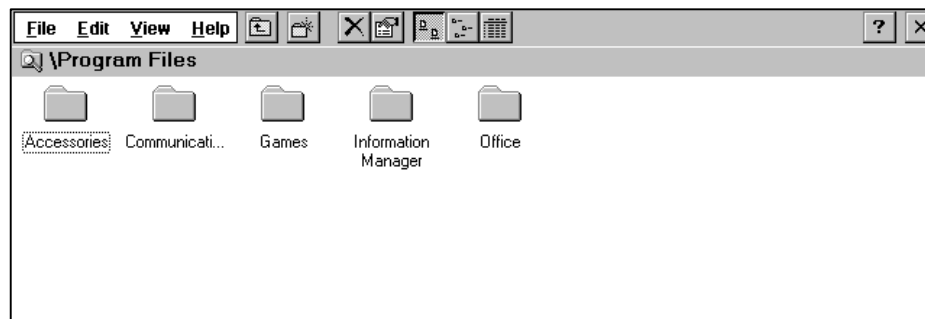


Figure 7 Program Files

Tap on the Terminal icon.

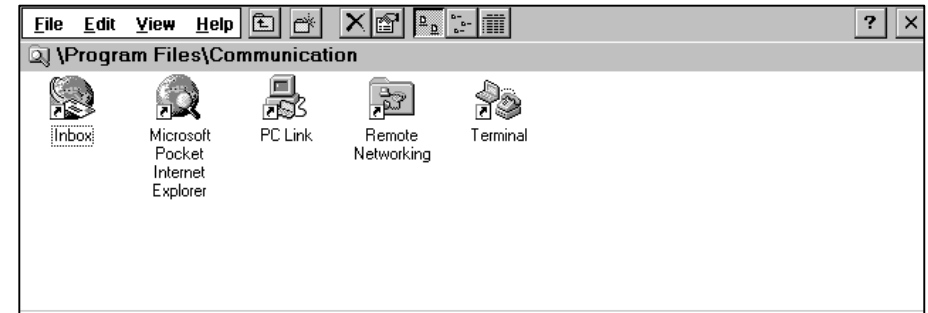


Figure 8 Communication Folder

On the Terminal screen, tap on Make a New Connection. Figure 9

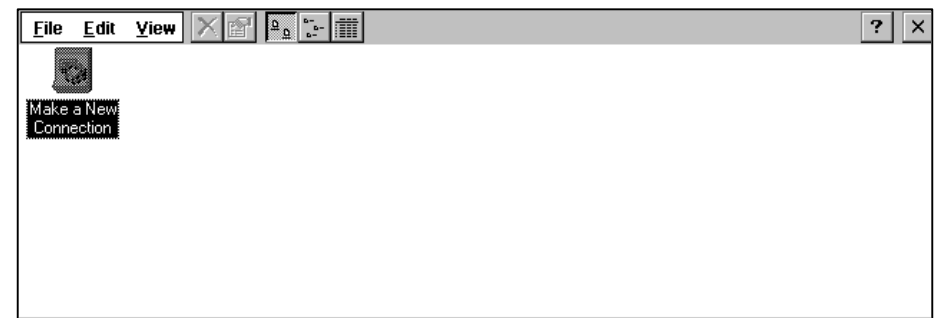


Figure 9 Terminal

In the Session Properties, in the Select a Modem pull-down menu should show the ThinFax 336E modem. Figure 10

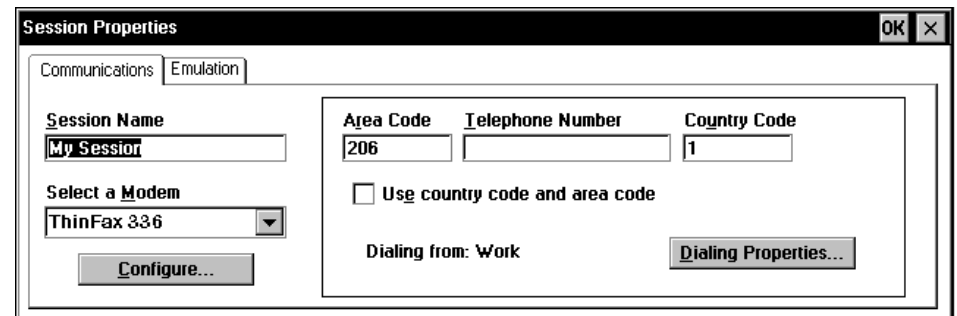


Figure 10 Select a Modem (ThinFax 336)

Testing the Modem (Cont.)

Enter the Area code and the telephone number of your ISP or any local BBS. As soon as you press the Enter key, the modem will attempt to make a connection to a remote modem. You can also use the Pocket Internet Explorer to test the modem's operation. For more details of how to use these programs, please see the *Microsoft Handheld PC User's Guide*.

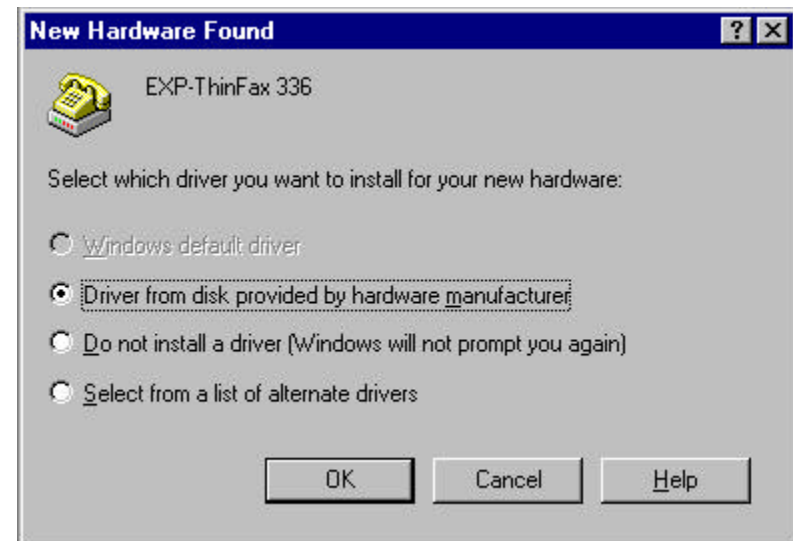
Using the ThinFax 336E in a Notebook Computer

Windows 95

The PCMCIA modem is a Windows 95 compatible product. It is installed as Plug-N-Play peripheral. A device driver for the modem is not required.

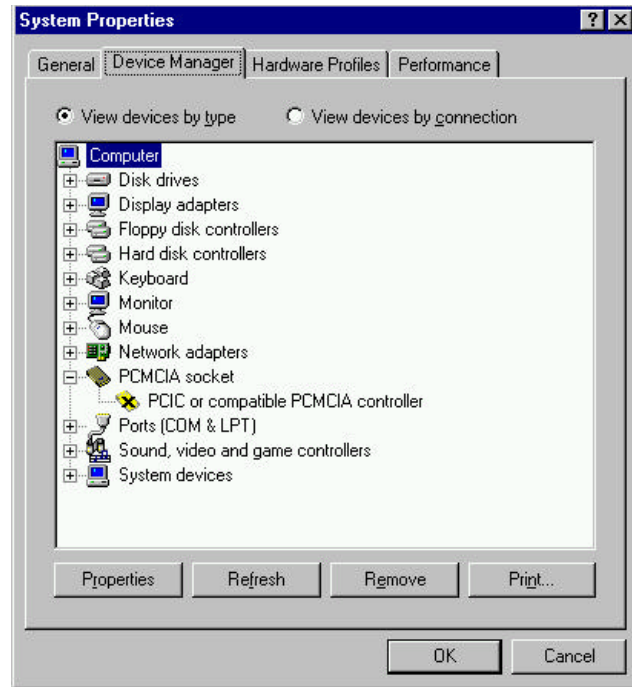
INSTALLING THE MODEM CARD

1. Start Windows 95 and insert the modem into PC Card (PCMCIA) slot. Check your computer User's manual for the slot location.
2. Windows 95 should respond with "New Hardware Found" window.



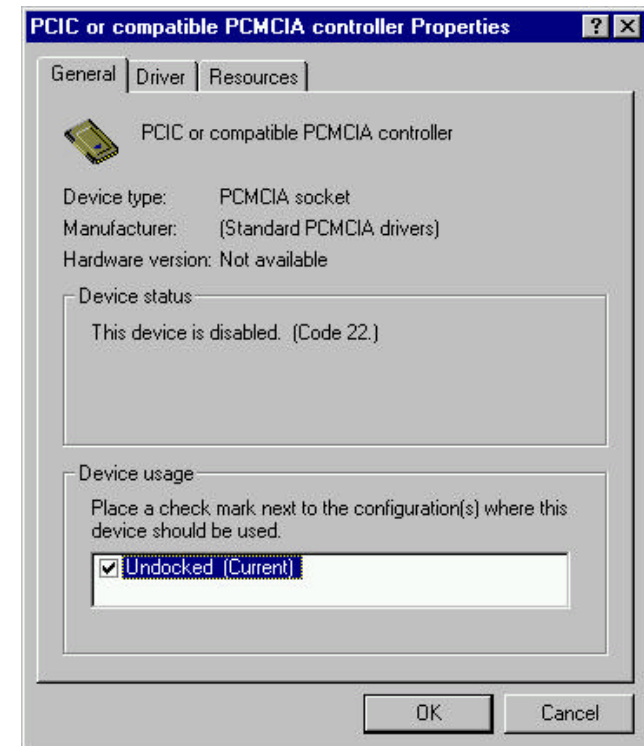
ENABLING 32-BIT CARD SUPPORT OF Windows 95

Your system should be ready for PCMCIA socket support prior to operating the ThinFax card. To check whether your computer is PCMCIA Socket supported, first, double-click on the “System” icon from the “Control Panel” folder (you can select the “Control Panel” under “Settings” from the “Start” menu to open the “Control Panel” folder).



Click on the Device Manager Tab. If “PCMCIA Socket” is found with a cross (X) sign next to the PCMCIA Controller as show above, it means the PCMCIA device driver is not using 32-Bit Card Support. The socket(s) is not function properly. There should be only one such line displayed.

In this case, double click on the PCMCIA Controller, and a dialog box will be displayed as below. Please place a check mark next to the current configuration of Device usage box, then select OK.



After the PCMCIA 32-Bit Card support is installed, Windows will ask you to reboot your computer. Then you should repeat the installation procedures. If the PCMCIA Socket is not found, then you must add a PCMCIA socket to your system. Please click on the “Add New Hardware” icon in the Control Panel folder and select “PCMCIA socket”. Select the appropriate type of PCMCIA Controller that matches with yours and follow the on-screen instructions.

DOS and Windows 3.XX

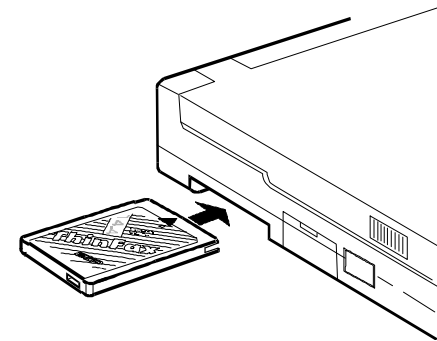
SYSTEM REQUIREMENT

PC Card (PCMCIA 2.10) Device Driver:

Most of the notebook computer manufacturers supply their own device driver program to operate the PC Card (PCMCIA) slot on their computers. If your computer comes with the device driver to support PC Card (PCMCIA) slot (i.e., Socket Service, Card Service, Card Installation Client, CardID, Cardtalk etc.), you need to use the device driver to operate the ThinFax card. If the computer did not come with any device driver, you should call the manufacturer for the device driver.

PC Card Type II or Type III slot(s)

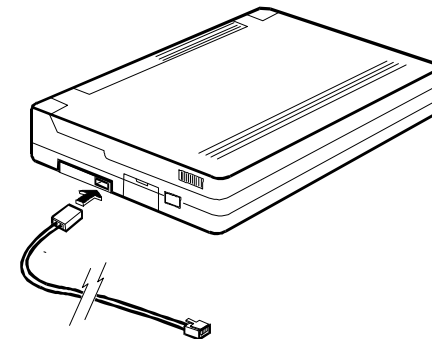
The ThinFax is a Type II card (5 mm thickness). Check your computer PC Card slot.



4. Insert the modem 's cable into the card.
5. Connect the RJ-11 connector to a working telephone line. (If you are not planing to use the modem at this time, you may skip this step.)
6. You are now ready to use the modem.

Hardware Installation

1. Locate the PC Card (PCMCIA) slot, which is usually on one side of the computer. Some PC Card (PCMCIA) systems allow "hot insertion" (inserting the card while PC power still on). Consult your computer User's manual for details. If you are in doubt, turn the power off when inserting the card.
2. Align the modem card with the arrow sign pointing toward the computer's slot. (Please note that the card is keyed to guide the proper installation.)
3. Slowly insert the modem card into the slot and press firmly until the modem 's connector is seated.



FCC COMPLIANCE STATEMENTS

FCC Part 68

This equipment complies with Part 68 of FCC rules. On the Fax/Data modem there is a label that contains, among other information, the FCC registration number and Ringer Equivalence Number (REN) for the equipment. If requested, please provide this information to your telephone company.

The REN is useful to determine the maximum number of devices may be able to ring when your number is called. In most, but not all areas, the sum of the RENs of all devices should not exceed five (5.0). To be certain of the number of the devices you may connect to your line, please call your local telephone company.

If your Fax/Data Modem is seemed to cause harm to the telephone network, your telephone company may discontinue your service temporarily. If possible, they will notify you in advance. But if advance notice isn't practical, you will be notified as soon as possible. You will be advised of your right to file a complaint with the FCC.

Your telephone company may make changes in its facilities, equipment, operation, or procedures that could affect the proper operation of your equipment. If they do, you will be given advance notice so as to give you an opportunity to maintain uninterrupted service.

If you experience trouble with the Fax/Data Modem, please contact your dealer for repair/warranty information. The telephone company may ask you to disconnect this equipment from the network until the problem has been corrected or you are sure that the equipment is not malfunctioning. There are no repairs that can be made by the customer to the Fax/Data Modem. All repairs need to be made by Modem manufacture.

This equipment may not used on coin service provided by the telephone company. Connection to party lines is subject to state tariffs. (Contact you state public utility commission or corporation commission for information).

FCC Part 15

This equipment has been tested and found to comply with the limits for a Class B digital device, pursuant to Part 15 of the FCC Rules. These limits are designed to provide reasonable protection against harmful interference in a residential installation. This equipment generates, uses and can radiate radio frequency energy and, if not installed and used in accordance with the instructions, may cause harmful interference to radio communications. However, there is no guarantee that interference will not occur in a particular installation. If this equipment does cause harmful interference to radio or television reception, which can be determined by turning the equipment off and on, the user is encouraged to try to correct the interference by one or more of the following measures:

Reorient or relocate the receiving antenna.

Increase the distance between the equipment and receiver.

Connect the equipment into an outlet on a circuit different from that to which the receiver is connected.

Consult the dealer or an experienced radio/TV technician for help.

CAUTION: CHANGE OR MODIFICATIONS NOT EXPRESSLY APPROVED BY PARTY RESPONSIBLE FOR COMPLIANCE COULD VOID THE USER'S AUTHORITY TO OPERATE THE EQUIPMENT.

CONSUMER INFORMATION AND FCC REQUIREMENTS

The Telephone Consumer Protection Act of 1991 makes it unlawful for any person to use a computer or other electronic device to send any message via a telephone fax machine unless such message clearly contains in a margin at the top or bottom of each transmitted page or on the first page of the transmission, the date and time it is sent and an identification of the business or other entity, or other individual sending the message and the telephone number of the sending machine or such business, other entity, or individual.

In order to program this information into your fax machine, you should complete the following steps:

(1) Under your Windows environment, go through Main-Control Panel-Date/Time to enter the date and time information.

(2) Go to the Cover Page Setup section of your Fax software. Enter information about you and your company for the fax page headers and click the OK button when all of the information are completed.

Your Fax software will generate the required headers on the fax page according to the information entered in the Cover Page Setup. If you need to know more detail about how to use the setup, please consult the Cover Page Setup section of your Fax software Users Guide.