

MCP-MA7

User's Manual

Ver.1.6.2

2007/12/06

Yamaha Corporation

Copyright on this document is the property of Yamaha Corporation.
Transferring or copying of this document in part or in whole requires the permission of Yamaha Corporation.
The information contained in this document is subject to change without notice.



Copyright© 2006-2007 Yamaha Corporation
All rights reserved.

Introduction

The MCP-MA7 (Contents Player) is an application software to preview the contents file for mobile phones. Through this application, playback for SMFs (Standard MIDI Files), SMAF (Synthetic Music Mobile Application Format) files, and MFi(N)^(*) files can be checked with the "MA-7 Emulator."

^(*) MFi (N): Only MFi files for NEC mobile phones are playable on this player.

Recommended Operating Environment

The recommended operating environment for this application is as follows:

Supported OS	Microsoft® Windows® XP Microsoft® Windows® 2000	Microsoft® Windows® Vista
CPU/Clock	Pentium® 4 / 2GHz or faster Pentium® M / 1GHz or faster ; Or the other compatible processor	Pentium® 4 / 2.4GHz or faster
Memory	256MB or more	512MB or more
Required HDD Space	40MB or more	

【Note】 All brand names and product names in this manual are trademarks or registered trademarks of their respective companies.

Table of Contents

INTRODUCTION	2
REVISION HISTORY	3
1. ABOUT MCP-MA7	4
AVAILABLE FUNCTIONS.....	4
PLAYABLE CONTENTS FILES	4
2. INSTALLING THE PROGRAM	4
3. STARTING THE PROGRAM	5
4. PLAYING A CONTENTS FILE	5
5. FUNCTIONS	6
5.1. MAIN WINDOW	6
<i>List View</i>	7
5.2. TITLE BAR	8
<i>System Menu</i>	8
5.3. MENU BAR.....	9
<i>File Menu</i>	10
<i>Edit Menu</i>	10
<i>View Menu</i>	11
<i>Help Menu</i>	11
5.4. TOOL BAR	12
5.5. VOLUME BAR.....	12
5.6. DEVICE CONTROL BAR	13
5.7. TRANSPORT BAR.....	13
5.8. GRAPHIC BAR	14
5.9. INFORMATION BAR.....	14
5.10. STATUS BAR.....	14

Revision History

Revision	Date	Summary of Changes
1.5.10	2006/09/12	First Edition
1.6.2	2007/12/06	Compatible with Windows Vista "Microsoft® Windows® Vista" was added to the compatible OS of the recommended operation environments.

1. About MCP-MA7

An outline of functions for the MCP-MA7 is explained.

Available Functions

The following functions are available;

Functions	Descriptions
List Display	Displays (a) read file(s) on to the list. The list can be stored as a (*.m7l) file type.
Playback Control	Playbacks (and stops) a read file. Sequential playback and repeated playback are also available.
Seek Slider	Indicates the progress of a song. Displays a current playback position. The playback position is adjustable.
Tempo & Key controls	Adjusts the playback speed and key
LED & Vibrator Flashers	Displays LED and Vibrator flashing.
File Information Display	Displays file information (title, copyright, and date) during playback.
Graphic Data Display	Displays SMAF Graphic Data.

Playable Contents Files

The following files are playable;

File Name	Extension
SMF	mid
SMAF	mmf
MFi (N) (Only MFi files for NEC mobile phones are playable.)	mld
Photo Mixer (SMAF/MA-3 QQ-VGA)	m3f
Photo Mixer (SMAF/MA-3 Q-VGA)	mqf

2. Installing the Program

Please install MCP-MA7.

1. Double click "setup.exe". The InstallShield Wizard is launched.
Please install the program by following the wizard.
2. After successful installation, either in 'All Programs' of the Start menu or on the desktop, a shortcut icon of the program is created.



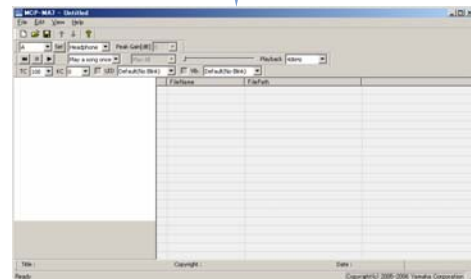
3. Starting the Program

Please start the MCP-MA7 in the following steps;

1. Select "MCP-MA7" from 'All Programs' of the Start menu or double click its shortcut icon on the desktop.



2. The Main Window of the MCP-MA7 is displayed.

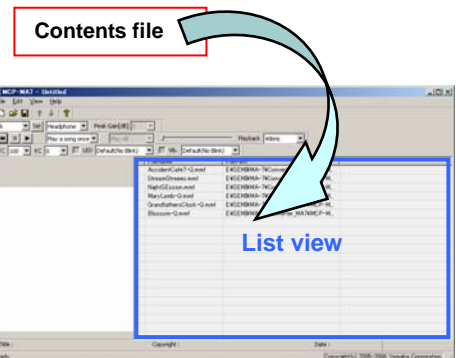


4. Playing a Contents File

The steps of a procedure to playback a contents file with the MCP-MA7 are briefly explained.

1. Register (a) contents file(s) on the List View in the Main Window.

※Multiple files can be added by drag & drop at a time.

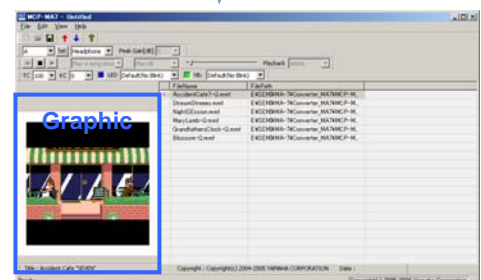


2. Click the Play (playback) button.



3. The contents file is played.

※In case of the SCAS-SMAF file, graphic data is also displayed.

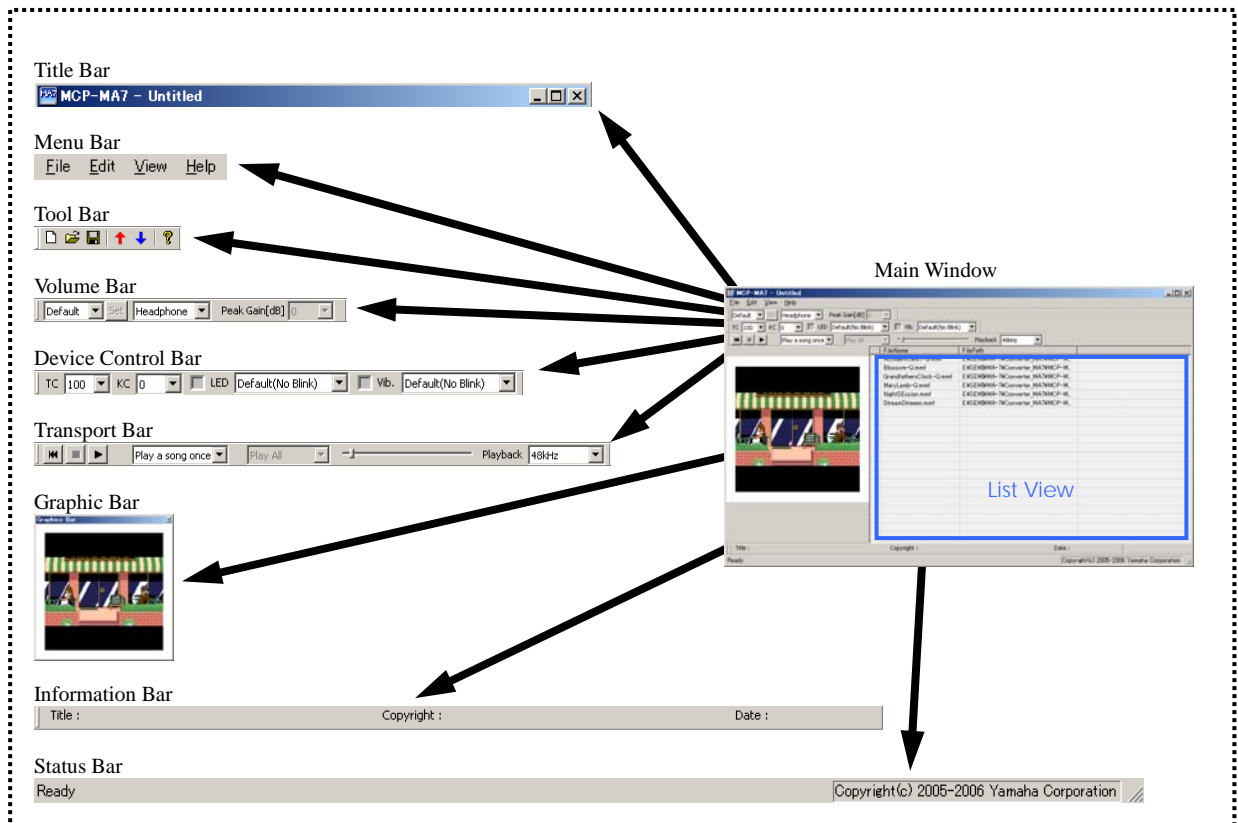


5. Functions

Each function of the MCP-MA7 is explained.

5.1. Main Window

On the Main Window, the control bars and the List View are contained.



【Note】 Each control bar can be displayed/undisplayed when needed. For more details about the control bars, please refer to "View Menu". Each tool bar other than the Status Bar can be rearranged as well.

List View

It lists up the contents files.

The contents file can be added on to the list by being dragged/dropped in to the List View area.

Multiple files can be dropped on it at a time.

Any file that is registered on the list can be played back.

1	2		
FileName	FilePath		
AccidentCafe7-Q.mmf	C:\sample\AccidentCafe7-Q.mmf	Add	3
Blossom-Q.mmf	C:\sample\Blossom-Q.mmf	Delete Del	4
GrandfathersClock-Q.mmf	C:\sample\GrandfathersClock-Q.mmf	Up	5
MaryLamb-Q.mmf	C:\sample\MaryLamb-Q.mmf	Down	6
NightSEssion.mmf	C:\sample\NightSEssion.mmf		
StreamStreeeo.mmf	C:\sample\StreamStreeeo.mmf		

List View

No.	Functions Name	Descriptions
1	FileName	The file name is displayed. When a title part (a very top row "File Name") is clicked, the added files are rearranged.
2	FilePath	The file path is displayed. When a title part (a very top row "File Path") is clicked, the added files are rearranged.
3	Add	A new contents file is added on to the list. ※The file can be dragged/dropped and then added on to the list.
4	Delete Del	A selected file is deleted from the list. ※A file can be deleted by being dragged out of the Main Window as well.
5	Up	A selected file is moved up by one row.
6	Down	A selected file is moved down by one row.

【Note】 The space key enables you to Play/Stop the selected file.

【Note】 The created list can be saved as a (*.m7l) file type.

5.2. Title Bar

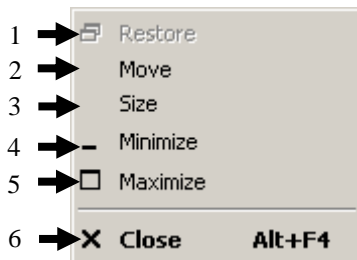
The file name of the list file developed on the current MCP-MA7 is displayed on the title bar in the Main Window.



No.	Functions Name	Descriptions
1	Application Icon	The system menu is shown. (For more details about the system icon, please refer to "System Menu".)
2	Minimize Button	The Main Window is minimized and becomes an icon on the task bar at the bottom.
3	Maximize Button Restore Down Button	The Main Window is maximized. In the maximized window, this button is then called "Restore Down". When clicked, the maximized window is restored down to the previous (normal) size.
4	Close Button	When clicked, in the case of the application window, the Main Window is closed and then the application is terminated.

System Menu

When the application icon on the left of the title bar, the System Menu is pulled down.



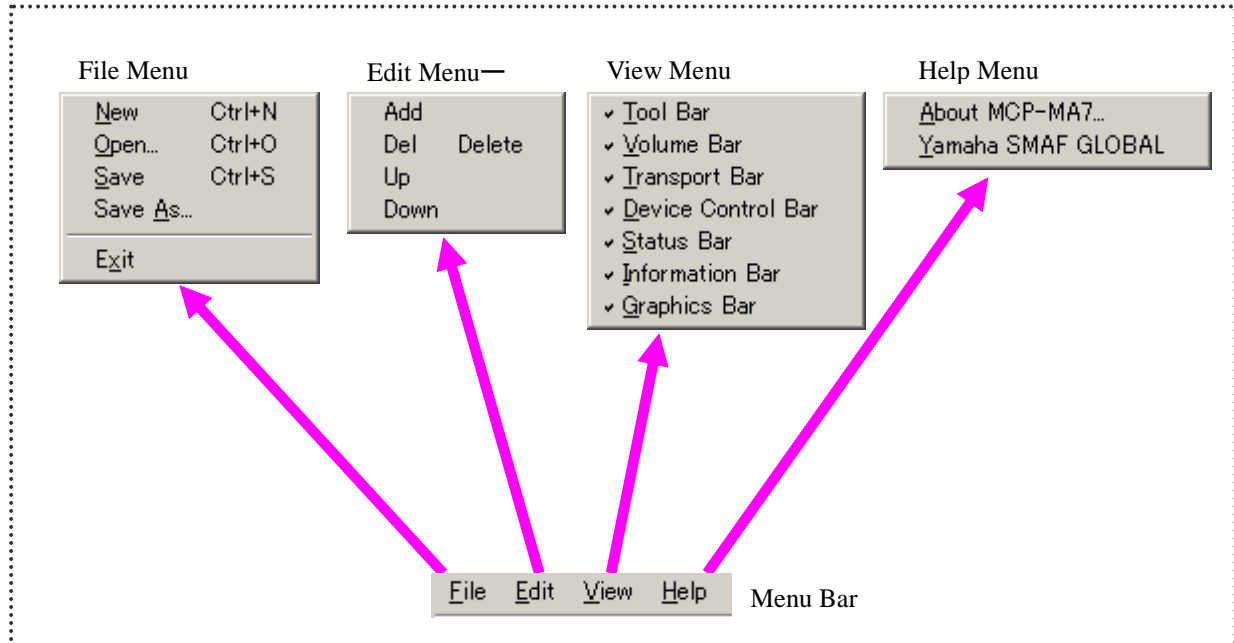
System Menu

No.	Functions Name	Descriptions
1	Restore	In a maximized window, it is restored down to the previous (normal) size.
2	Move	The mouse pointer becomes a move tool pointer. When the title bar in the Main Window is clicked/dragged by this pointer, a position of the window can be moved. In the case of the maximized window, this option is not available.
3	Size	The mouse pointer becomes a size tool pointer. When either top/bottom or right/left margin is clicked/dragged by this pointer, the size of the window can be changed. In the case of the maximized window, this option is not available.
4	Minimize	The window is minimized and becomes an icon.
5	Maximize	The window is maximized. In the case of the maximized window, this option is not available.
6	Close	In the case of the application window, the Main Window is closed and then the application is terminated.

5.3. Menu Bar

Each Menu Bar contains the menus for executing various functions.

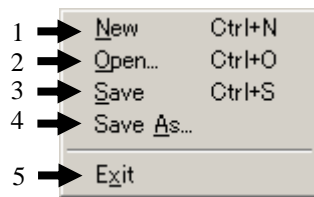
For more details about each menu bar, please refer to the chapter corresponding to each menu.



Menu Bar

File Menu

From the file menu, a list file (*.m7l) can be created, opened, exited, and saved.



File Menu

No.	Functions Name	Descriptions
1	New	A new list file (*.m7l) is created. If the list is under edit, a message dialog will appear to check whether the editing list should be saved.
2	Open...	A list file (*.m7l) is opened. If the list is under edit, a message dialog will appear to check whether the editing list should be saved.
3	Save	The current list file (*.m7l) is saved.
4	Save As...	The current list file (*.m7l) is saved under a different name.
5	Exit	The application is terminated.

What is a list file (*.m7l)?

A list file is the data file that stores both of all File Names and File Paths in the List View.

Edit Menu

The list of the contents file in the List View can be edited.

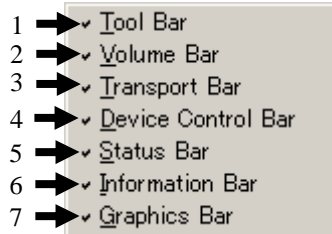


Edit Menu

No.	Functions Name	Descriptions
1	Add	A file is added on to the list. ※The file can be dragged/dropped and then added on to the list.
2	Del Delete	A selected file is deleted from the list. ※A file can be deleted by being dragged out of the Main Window as well.
3	Up	A selected file is moved up by one row.
4	Down	A selected file is moved down by one row.

View Menu

Each control bar can be displayed/undisplayed on the application.
Any activated control bar is check-marked.

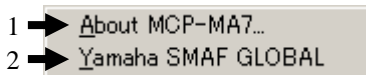


View Menu

No.	Functions Name	Descriptions
1	Tool Bar	Switches Tool Bar display/undisplay. (p. 12)
2	Volume Bar	Switches the Volume Bar display/undisplay. (p. 12)
3	Transport Bar	Switches Transport Bar display/undisplay. (p. 13)
4	Device Control Bar	Switches Device Control Bar display/undisplay. (p. 13)
5	Status Bar	Switches Status Bar display/undisplay. (p. 14)
6	Information Bar	Switches Information Bar display/undisplay. (p. 14)
7	Graphics Bar	Switches Graphic Bar display/undisplay. (p. 14)

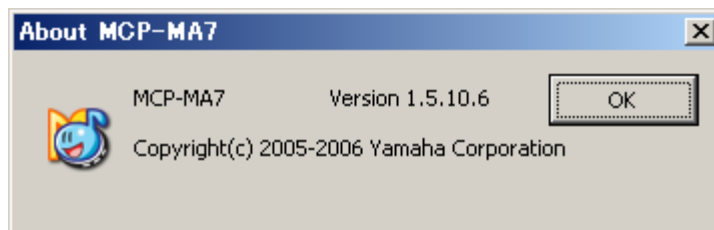
Help Menu

Information about the MCP-MA7 is provided.



No.	Functions Name	Descriptions
1	About MCP-MA7...	Version information about the MCP-MA7 is displayed.
2	Yamaha SMAF GLOBAL	Connects to the Yamaha SMAF Global website.

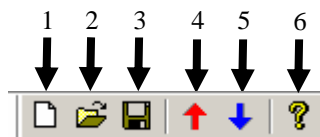
Help Menu



Version Information

5.4. Tool Bar

Read, edit, and save for the list file (*.m7l) can be controlled.



Tool Bar

No.	Functions Name	Descriptions
1	New	A new list file (*.m7l) is created. If the list is under edit, a message dialog will appear to check whether the editing list should be saved.
2	Open	A list file (*.m7l) is opened. If the list is under edit, a message dialog will appear to check whether the editing list should be saved.
3	Save	The current list file (*.m7l) is saved.
4	Up	A selected file in the list is moved up by one row.
5	Down	A selected file in the list is moved down by one row.
6	About	Version information is displayed.

5.5. Volume Bar

Speaker and headphones settings can be performed.



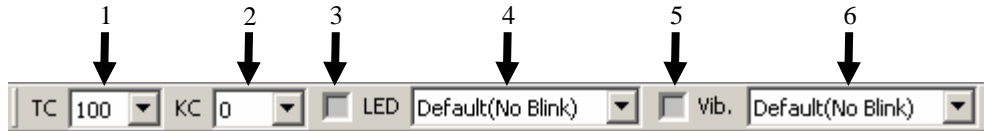
Volume Bar

No.	Functions Name	Descriptions
1	Setting	※This function is not available in this tool. Each setting saved by "Set" is read and reflected. (Selectable values : Default · A · B · C · D · E)
2	Set	※This function is not available in this tool. Each setting value for selected "Settings" is saved.
3	Output Mode	Output device setting is set up. (Selectable values : Headphone/Speaker)
4	Peak Gain	※This function is not available in this tool. Maximum volume can be set up. (Available Setting Values : -12 to 0dB)

5.6. Device Control Bar

This is for LED/Vib status display.

The LED flashing period and the Vib vibration period can be set up.

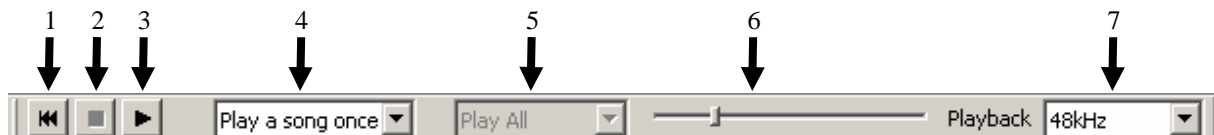


Device Control Bar

No.	Functions Name	Descriptions
1	Tempo Control (TC)	The tempo control value is displayed. Its unit is %. Playback speed can be modified from the list of the combo-box (Selection Range: 70~130%) Any modification during playback is applied immediately. It is not reflected on to contents data.
2	Key Control (KC)	The key control value is displayed. Its unit is a semi-note and is 1. It can be modified from the list of the combo-box (Selection Range: -12~+12). Any modification during playback is applied immediately. It is not reflected on to contents data.
3	LED Lamp	It flashes by setting of the LED flashing period.
4	LED Flashing Period Selection	The LED flashing period can be modified and displayed (Selection Range: Default(No Blink)/18 Hz/16 Hz/12 Hz/8 Hz/4 Hz)
5	Vib. Lamp	It flashes by setting of the Vib. Vibration period. Its MTR is flashing.
6	Vib. Vibration Period Selection	The Vib. vibration period is modified and displayed. (Selection Range: Default(No Blink)/2.25 Hz/2.0 Hz/1.5 Hz/1.0 Hz/0.5 Hz)

5.7. Transport Bar

Control for playback and stop of music data is executed.



Transport Bar

No.	Functions Name	Descriptions
1	Rewind	A playback starting position is moved to a beginning.
2	Stop	Playback is stopped.
3	Play	Playback is started.
4	Playback Select List	Sequential and repeated playback switching is available. (Selection Range: Play a song once/Repeat a song/Play list once/Repeat list)
5	Phrase List Selection	The phrase list for playback is considered to be a selection item.
6	Seek Slider	A playback position within the limit of the song is set up and displayed.
7	Playback Frequency	A playback frequency for the emulator is set up. (Possible Settings: 48kHz/44.1kHz/32kHz/22.05kHz)

5.8. Graphic Bar

In the case of the SCAS-SMAF file, its graphic data are displayed in playback.



Graphic Bar

5.9. Information Bar

File information is displayed in playback.



Information Bar

No.	Functions Name	Descriptions
1	Title.	Title information is displayed during playback.
2	Copyright	Copyright information is displayed during playback.
3	Date	Created date information is displayed during playback.

5.10. Status Bar

The status for the MCP-MA7 is displayed.



Status Bar

No.	Functions Name	Descriptions
1	Message Display Domain	Various kinds of message are displayed.
2	Copyright Display Domain	"Copyright© Yamaha Corporation" is displayed.