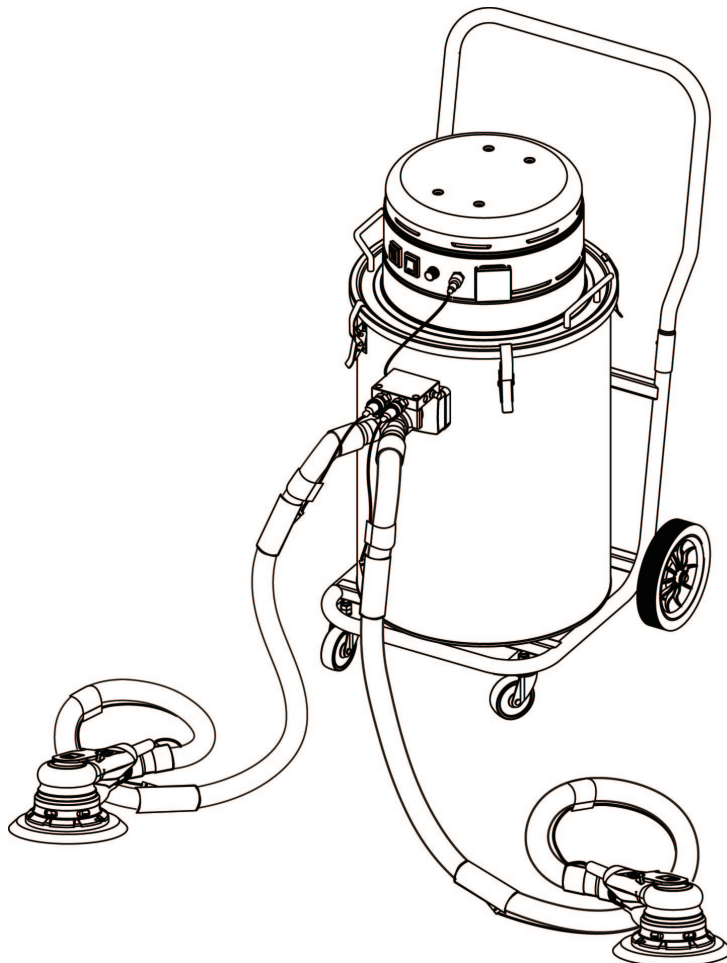




USER MANUAL UR700QVAC and UR700QVAC-H

**AUTOMATIC WET / DRY DUSTLESS
VACUUM SYSTEMS**



Follow the procedures in this manual to operate this machine safely and effectively. Ensure that this manual is readily available to the operator at all times. If you have any questions about the operation of this machine, contact:

North America: Uni-ram Technical Service 1-800-417- 9133

Other Continents: Contact Your Supplier

FEATURES AND SPECIFICATIONS

The UR700QVAC is 120 V, 2000 W, 50/60 Hz and the UR700QVAC-H is 240 V, 2000 W, 50/60 Hz. These mobile vacuums are ideally suited for automotive, marine and industrial applications wherever air operated, vacuum-assist tools are used. Two technicians can work on different projects at the same time.

- Portable.
- One or two operators can work simultaneously, 20 foot power cord, 16 foot vacuum hose.
- Automatic activation of vacuum by air tool, manual override.
- 2 motors 1,000 W each; Select single or dual vacuum motors, single - 1,000 W and dual 2,000 W. Maximum decibel rating at 2,000 W is 70 db. Wattage (power consumption) can be reduced using the Variable Power Adjustment dial.
- A Single Cartridge Filters is standard. High Density Filters are available.
- Electrical outlet for use with one electrical sander.
- Sealed Vacuum: 99" water (2500mm)
- Supply air pressure: 100 -150 PSI (6.510.0 bar)
- Weight: (700) 72 lb / 33 kg
- Motor is a bypass, 2 stage motor for long life and vacuum power. Diecast housing. Internal fan for cooling.
- Shipping Dimensions (WDH): 41 X 23 X 24"

CAUTIONS AND WARNINGS

Do not use this vacuum with hazardous dust such as alumina and magnesia dust and do not use with flammable liquids like gasoline. Repair must be carried out by a qualified technician.

PREVENTATIVE MAINTENANCE

4 replacement brushes come with the vacuum.

When To Replace Brushes:

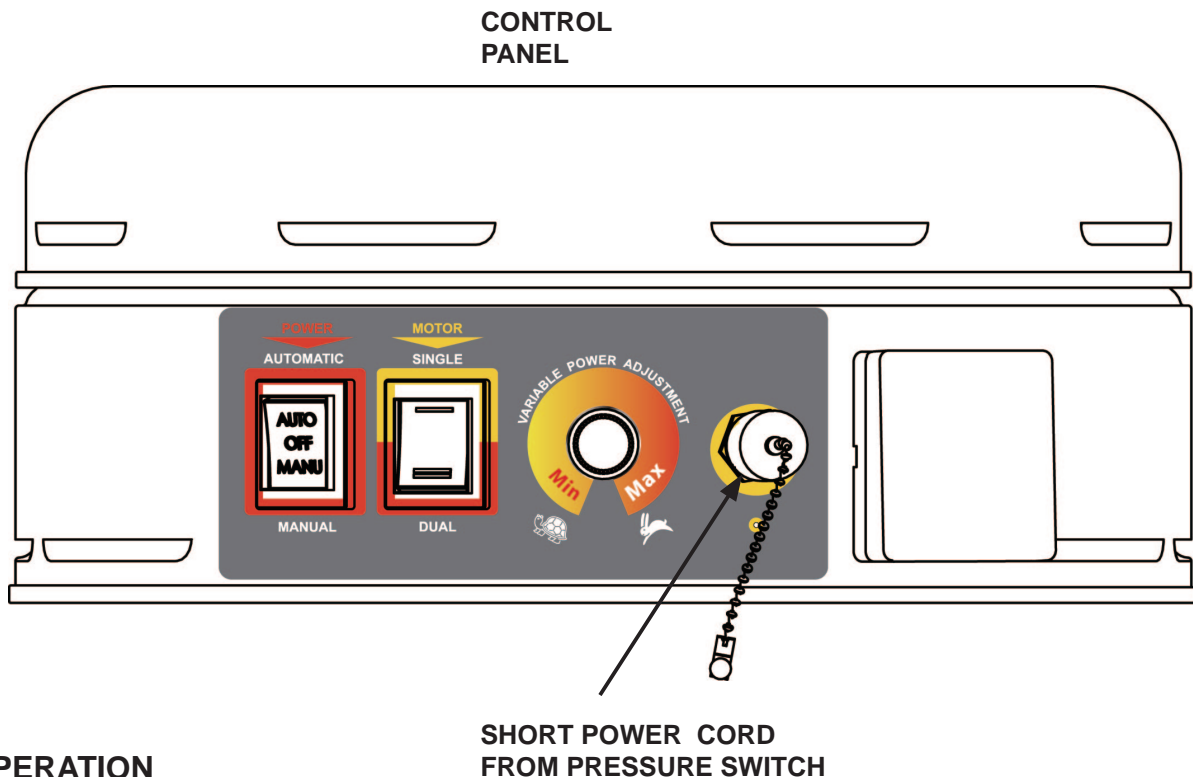
The brushes are rated for 500 hours. Replace the brushes at the earlier of the first sign of wear or 500 hours of use. The sign of wear is indicated when the vacuum motor, periodically, stops unexpectedly.

How to Replace the Brushes:

See the instructional video on the Uni-ram website, www.uniram.com. Go to the tab "Miscellaneous", then "Testimonials", then "Industrial" to locate the video.

SETUP

- Check for transportation or handling damage.
- Make sure the Vacuum Head is securely clamped.
- The Pressure Switch is in a separate carton. Install the Pressure Switch. Connect the Short Power Cord from the Pressure Switch to the Control Panel connector on the Vacuum Head. Make sure the connection is secure.
- Install 1/4" npt male air plug to the the female air inlet on the pressure switch.
- Connect the two Air Supply Lines and two Vacuum Hoses to the Pressure Switch.
- Provide at least 100 PSI (7 bar) supply to the air plug on the pressure switch. To ensure dry air use a moisture filter (not provided).
- Connect the Air Tools.
- Make sure the correct voltage is supplied. Plug in the unit. Set On / Off control to Auto. Test the operation of the vacuum and sander. Ensure all air fitting connections are secure without air leakage.



OPERATION

1. ON / OFF CONTROL:

AUTO allows the unit to be turned on and off from the Sanding Tools.

OFF turns the unit off and prevents the Sanding Tools from turning it on.

MANU turns the vacuum on only.

2. SINGLE OR DUAL MOTOR OPERATION

3. VARIABLE SPEED CONTROL

The motor speed is adjustable using the Variable Power Adjustment dial.

WET OPERATION

An optional kit is available to allow water to be vacuumed (Part No. 27-710). However, to prevent water damage to the filters, they must be removed during wet use. The unit should then be thoroughly dried before using it on dry materials.

**CAUTION: TO PREVENT AN EXPLOSION OR FIRE,
DO NOT VACUUM FLAMMABLE LIQUIDS.**

CLEANING THE FILTERS and EMPTYING THE CANISTER

To keep the vacuum operating efficiently, clean the bag filter and empty the canister frequently. Clean the cartridge filter periodically. Replace the bag filter and cartridge as required.

Unplug the unit and detach the short Power Cord from the Pressure Switch on the vacuum head, unclamp the Head and lift it completely off the Canister.

To clean the Bag Filter:

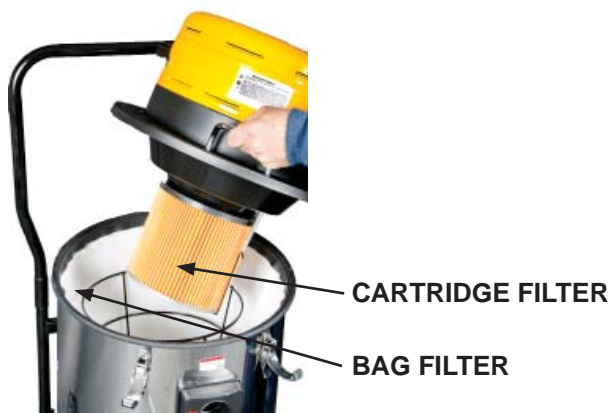
- Remove the metal spacer from inside the bag filter.
- Place your hand inside the bag near the top and “tap” the bag so the dust will fall from the outside of the bag to the bottom of the canister. Work your hand around the bag, 360 degrees tapping as you . Lower your hand and “tap” around the outside of the bag. Repeat this step until you reach the bottom
- Wait 2 minutes for the the dust to settle then empty the canister. Remove the bag filter after cleaning.

To empty the Canister:

- Detach the Pressure Switch/Junction Box from the Canister (leaving the Hoses attached) by pushing the red knob to the left and pull the Box off. Unlatch the two clips to detach the canister from the trolley. Tip the Canister over so that the dust and debris fall out into a waste bag.
- Replace the bag filter and spacer. **It is very important to ensure the bag sealing edge is secure to prevent vacuum leakage.** Secure the canister and place the Vacuum Head back on the Canister and clamp securely.

To clean the Cartridge Filter:

- Slide off the clamping wires and pull off the Filter.
- Vacuum the filter inside and outside using the brush tool of another vacuum.
- Gently spray warm water into the inside of the filter. Let the water fill the cavity, then dump the water. Repeat this step until the water is clean.
- Gently spray water on the outside of the filter to remove the dirt.
- Let the filter air dry, then reassemble.



TROUBLE SHOOTING GUIDE

ACTIVATION OF VACUUM

Vacuum does not start when sander starts.	<ul style="list-style-type: none"> • Set Auto / Off / Manu switch to Manu setting. If it does not start call Factory. • If it starts, Set Auto / Off / Manu switch to Auto setting. • Ensure short Power Cord connected to the Pressure Switch is firmly attached. • Ensure shop air supply is at least 100 psi. • Adjust air control on sander to full open. Test. If sander does not turn on check with a different sander.
Vacuum does not stop once sander is turned off.	An air leak can cause the problem. Check for compressed air leakage at fittings along air line from air supply to sander. Secure connections. Use teflon tape.
Vacuum motor stops unexpectedly while operating.	See "Preventative Maintenance" to replace brushes.
Vacuum turns on without activating sander.	Check for air leakage at fittings along air line from supply to sander. Secure connections. Use teflon tape.

REPLACEMENT PARTS

PART NO.	DESCRIPTION
28-110LV	VAC HEAD, 120V, UR700QVAC
28-110HV	VAC HEAD, 240V, UR700QVAC-H
28-123	VACUUM MOTOR, UR700QVAC (120v)
28-123H	VACUUM MOTOR, UR700QVAC-H (240v)
28-129	SET OF 2 BRUSHES FOR MOTOR
28-131	PRESSURE SWITCH
28-171	CARTRIDGE FILTER, REGULAR
28-172	CARTRIDGE FILTER, HIGH DENSITY
28-173	BAG FILTER
28-710	WET VAC HOSE & BRUSH KIT
28-716	VAC HOSE + AIR HOSE, 16 FT
28-724	VAC HOSE + AIR HOSE, 24 FT
28-180	BASKET + HOSE HOOKS, OPTIONAL

Full Product Warranty

These Uni-ram products have been engineered and manufactured to high performance standards. Each unit has been subjected to detailed factory testing before shipment.

This product comes with a one-year full warranty from the date of purchase. Uni-ram Corporation reserves the right to repair or replace the unit, free of charge, to the original purchaser if a part is found to be defective in material or workmanship as determined by factory service personnel. The items listed below under "Conditions of Warranty" as consumables are not covered.

Uni-ram reserves the right to direct the customer to ship the unit collect to the Uni-ram factory or to an approved Service Center for repair using the Uni-ram Return Goods Procedure or to repair the unit on-site. To prevent damage in transport, the purchaser must ship the unit in the original packaging or use alternate adequate packaging. All units must be shipped clean and free of solvent.

Conditions of Warranty:

As Uni-ram Corporation has no control over the working conditions or circumstances under which the purchaser stores, handles or uses the product, Uni-ram makes no warranty or claim, either expressed or implied with respect to this product's fitness for any purpose or the result to be obtained from its use. This condition applies to the sale of all products and no representative or distributor of Uni-ram Corporation has the authority to waive or change these conditions.

This warranty applies only to the original purchaser and does not apply if the unit has been misused, overloaded, neglected, altered or used for any purpose other than those specified in the operating and installation instructions. Deterioration due to normal wear is not covered by this warranty. Damage due to accident, transportation, fire, floods or acts of God is also not covered. Units whose serial numbers have been altered or removed are not covered. Unauthorized attempts at self-repair or alterations by the owner also invalidate this warranty. Interior or exterior finishes are not covered by this warranty.

Consumable Items are not covered by this warranty.

This warranty replaces all other warranties expressed or implied by statute or otherwise.

To make a claim, call Uni-ram Service at 1-800-417-9133 and quote the serial number of the unit.