

HR-WRAP Installation Guide

ver. 1.2
7-12-2010



Configuration Scripts



HauteWRAP PDF User Manual



HauteSpot MS Window Tool



HauteSpot Configurator Tool



HauteWRAP Performance
Graphs



HauteSpot Networks Manager



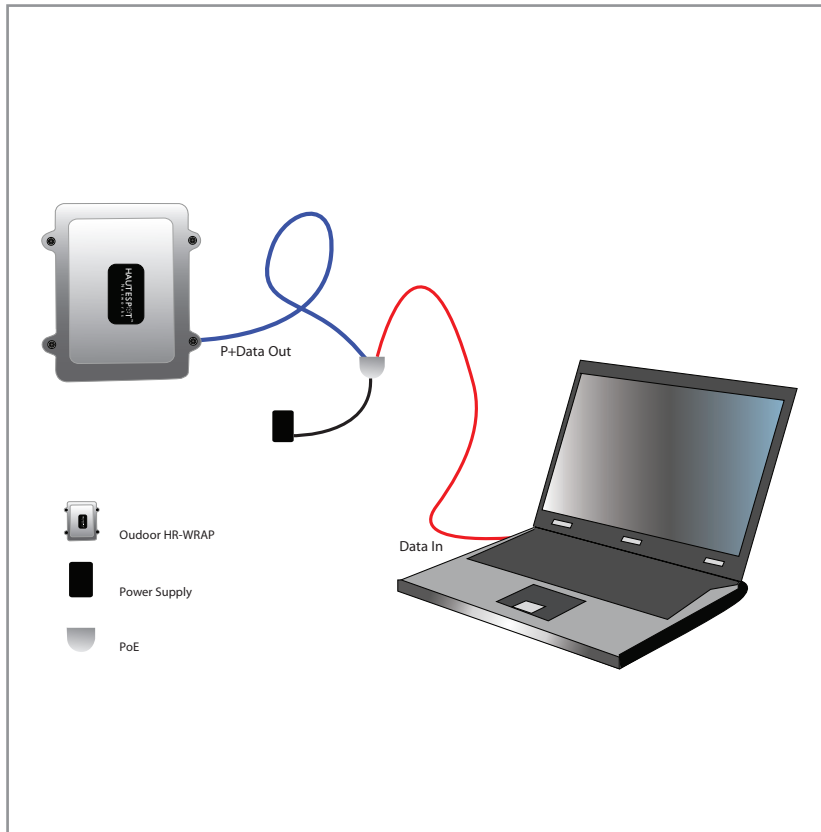
HauteWRAP Telnet



HauteSpot Networks Manager
PDF User Manual

P. O. Box 4016
San Luis Obispo, CA 93403
p: 805-541-9477
f: 805-456-3829
email: support@hautespot.com
www.hautespot.com

HR-WRAP Quick Start



1

POWERING ON YOUR HR-WRAP

All outdoor HR-WRAP equipment must be powered on with the provided PoE injector. Voltage ranges can be found on the enclosure of the device, near the Ethernet connection. The provided PSU is capable of a PoE distance around 300 ft. Indoor equipment has an accessible power jack, no PoE is required. Refer to user manual for detailed wiring instructions.

2

LOGIN

HR-WRAP equipment supports web administration and client/server software administration. The software administration tool is called "HS Configurator", and it can be downloaded from the web admin login page.

Default login info:

IP address: 192.168.1.1

User ID#1: admin

User ID#2: install (web interface only)

No passwords on either account by default

3

CONFIGURATION

Complex configurations must be done using the software administration tool. This includes long distance wireless links and crucial surveillance/broadcast video networks. Basic point to point and even point to multi-point wireless networks can be configured using the web administration, which is very simple.

It is highly advised to configure the equipment prior to installation.

All equipment comes in station mode. To form a wireless link, one device must operate as master base station (aka AP-bridge mode). SSIDs must be identical between the two. Security keys need to be in Hexadecimal format. For WPA key calculation, please go to www.hautespot.net/wpapsk.html

4

INSTALLATION AND GROUNDING

Make sure your wireless equipment is properly grounded. The case must be attached to a steel pole or ground wire which has a path to the ground. Follow the guidelines in the user manual which can be downloaded from the web administration login page. Water proof your connectors following the instructions in the user manual.