

**Product Specification**  
**300Mbps 802.11n Wall Plug**  
**Universal WiFi Repeater**

**WNAP-1260**

This document contains confidential proprietary information and is property of PLANET. The contents of this document should not be disclosed to unauthorized persons without the written consent of PLANET.

Change History:

Revision	Date	Author	Change List
Version 1.0	2012-05-04	Miki Chou	Initial release

Author	Miki	Editor:	Miki
Approved by:	Tom	Project Leader:	Kent

## 1. PRODUCT DESCRIPTION



### Easy Wireless Range Extension

WNAP-1260, a WiFi Repeater, is case-shaped, easy to carry, and easy to install. Its wireless transmission rate is up to 300 Mbps. It is a high-performance and IEEE802.11b/g/n-compatible network access device that can provide reliable and convenient network access service for individual users and SOHO (Small Office, Home Office). It features Web-based GUI, allowing users to easily modify settings to connect the device to ISP (Internet Service Provider) and conveniently perform upgrade using the WEB page.

In addition, WNAP-1260 has a three-way switch on the side panel that enables users to change the device's working mode among AP, Repeater, and Client. In the AP mode, the device functions as a wireless router to achieve wireless connection for the wired LAN. In the Repeater mode, the device provides the URM (Universal Repeater Mode) function for users to expand wireless coverage of the existing AP in a quick and easy way. In the Client mode, the device functions as a wireless network adapter but it can provide a better transmission and connection performance.

### Internet Broadband Sharing

PLANET Wall Plug Universal WiFi Repeater, WNAP-1260, provides home and SOHO users a reliable and cost effective wireless solution by featuring WAN Internet access and high speed IEEE 802.11n wireless transmission. The WNAP-1260 is equipped with one LAN/WAN port for connection to local network or for wired cable / xDSL service connection. The WNAP-1260 provides more flexible and easier way for users to share an instant wireless network service via range extension wherever at Home, Hotspot, or in public places like transportation, outdoor events, and etc.

### Multiple Wireless Network Technologies for Greater Access

PLANET Wall Plug Universal WiFi Repeater, the WNAP-1260 features 802.11n radio with 2T2R antenna technology compliant with 802.11b/g/n standards. Compared with general wireless routers, the WNAP-1260

offers more powerful and flexible capability for business demands to access Internet with true mobility and range extension of wireless network.

### **More Flexibility and Mobility**

With the tiny-sized and wall plug design, the WNAP-1260 is easy to plug to wall outlet for wireless access in any place. It can operate in various environments with the hardware switch modes including **AP**, **Repeater**, and **Client**, which helps to immediately set up a wireless network without software configuration. The wall plug design and operation flexibility make the WNAP-1260 suitable for range extending.

### **One-touch Secure WiFi Extension**

In order to simplify security settings for home and SOHO network, the WNAP-1260 supports **Wi-Fi Protected Setup (WPS)** with configuration in PBC and PIN type. Just push the WPS button or key in the PIN code, the secure connection between the WNAP-1260 and the wireless clients can be built immediately, which offers users a convenient and fast method to construct a secure wireless network.

### **Wide Range of Wireless Security Support**

To secure the wireless communication, the WNAP-1260 supports most up-to-date encryptions including WPA/WPA2-PSK with TKIP/AES. Made to fulfill enterprise and various applications demand, the WNAP-1260 enhances security and management features such as multiple SSID support. It can create up to 5 virtual standalone AP with 5 different SSID according to individual security levels and encryption scheme of various wireless devices.

### **Advanced Firewall Security**

In the Router mode, the WNAP-1260 supports NAT functions and allows multiple users to access Internet via only one single legal IP. It provides Port Forwarding and DMZ for LAN PC to act as an application server. Furthermore, the advanced firewall by the WNAP-1260 can protect your Intranet clients from unauthorized accesses and various DoS attacks from the Internet. In aspect of the firewall, the WNAP-1260 provides IP/ MAC/ DNS/ URL filtering, and prevents possible hackers attack.

### **Easy Setup Anytime Anywhere**

The WNAP-1260 provides a total solution for home and business users. With the High Speed 802.11n wireless technology, the WNAP-1260 is easy to integrate the wireless devices with existing wired network.

## 2. PRODUCT FEATURES

- **Industrial Compliant Wireless LAN & LAN**
  - Compliant with IEEE 802.11n wireless technology capable of up to 300Mbps data rate
  - Backward compatible with 802.11b/g standard
  - Equipped with 10/100Mbps RJ-45 Ports for LAN/ WAN, Auto MDI/ MDI-X supported
- **Fixed-network Broadband Router**
  - Supported connection types: Dynamic IP/ Static IP / PPPoE / PPTP / L2TP
  - Support Static Routing, IGMP Proxy
  - Support multiple sessions SIP ALG, IPSec, L2TP and PPTP VPN pass-through
  - Support DMZ, Port Forwarding and Port Triggering for various networking applications
  - Support DHCP Server, UPnP, Dynamic DNS
- **Wireless Network Range Extender**
  - Multiple Wireless Modes: AP, WDS, Repeater, Universal Repeater, Client
  - Support Multiple SSID to allow users to access different networks through a single AP
  - Support WMM (Wi-Fi Multimedia), Wireless QoS
  - Support IAPP (Inter Access Point Protocol), Wireless Roaming
- **Secure Network Connection**
  - Advanced security: 64/128-bit WEP, WPA/WPA2, WPA-PSK/WPA2-PSK(TKIP/AES)
  - Built-in NAT firewall features, with SPI function to protect against DoS attacks.
  - Support IP/ MAC/ URL/ DNS Filtering
- **Easy Installation & Management**
  - Web-based UI and Quick Setup Wizard for easy configuration
  - Remote Management allows configuration from a remote site
  - System status monitoring includes DHCP Client, System Log
- **Flexible Usage & Compact Design**
  - Portable and Wall-Plug design
  - Hardware switchable operation modes: AP / Repeater / Client
  - Easy Sync by One-touch Wi-Fi Protected Setup (WPS)

### 3. PRODUCT SPECIFICATION

#### 3.1 MAIN COMPONENT

Chipset:	Realtek RTL8196C + RTL8192
RAM :	32MB
Flash :	4MB

#### 3.2 FUNCTIONAL SPECIFICATIONS

<b>Product</b>	<b>WNAP-1260</b> 300Mbps 802.11n Wall Plug Universal WiFi Repeater	
<b>Hardware Specification</b>		
<b>Interface</b>	LAN/WAN	1 x 10/100Mbps Auto MDI/MDI-X RJ45 port
<b>Antenna</b>	Gain:	2 x Internal 2dBi Antenna
	Orientation:	Omni-directional
<b>Button/Switch</b>	Mode Selection Switch (AP / Repeater / Client) WPS Button Reset button *Push about 3~6 seconds to reset to factory default settings	
<b>LED Indicators</b>	PWR, WPS, Ethernet, WLAN	
<b>Material</b>	Plastic	
<b>Wireless interface Specification</b>		
<b>Standard</b>	Compliance with IEEE 802.11b/g/n	
<b>Frequency Band</b>	2.4~2.4835GHz	
<b>Extend Frequency</b>	DSSS	
<b>Modulation Type</b>	DBPSK, DQPSK, QPSK, CCK and OFDM (BPSK/QPSK/16-QAM/ 64-QAM)	
<b>Data Transmission Rates</b>	11n (40MHz): 270/243/216/162/108/81/54/27Mbps 135/121.5/108/81/54/40.5/27/13.5Mbps (Dynamic) 11n (20MHz): 130/117/104/78/52/39/26/13Mbps 65/58.5/52/39/26/19.5/13/6.5Mbps (Dynamic) 11g: 54/48/36/24/18/12/9/6Mbps (Dynamic) 11b: 11/5.5/2/1Mbps (Dynamic)	
<b>Transmission Distance</b>	Indoor up to 100m outdoor up to 300m (it is limited to the environment)	
<b>Channel</b>	America/ FCC: 2.412~2.462GHz (11 Channels) Europe/ ETSI: 2.412~2.472GHz (13 Channels) Japan/ TELEC: 2.412~2.484GHz (14 Channels)	
<b>Channel Width</b>	20/ 40MHz	
<b>Max. RF Power</b>	20 dBm (EIRP)	
<b>Receive Sensitivity</b>	135M: -68dBm@10% PER 54M: -68dBm@10% PER	

	11M: -85dBm@8% PER
<b>Software Features</b>	
<b>Operation Mode</b>	<ul style="list-style-type: none"> <li>■ <b>AP/Router</b></li> <li>■ <b>Repeater</b></li> <li>■ <b>Client</b></li> </ul> (Switchable by H/W)
<b>Wireless Mode</b>	AP, Client, WDS PTP, WDS PTMP, Repeater (WDS+AP), Universal Repeater (AP+Client)
<b>Encryption Security</b>	WEP (64/128-bit) encryption security WPA / WPA2 (TKIP/AES) WPA-PSK / WPA2-PSK (TKIP/AES)
<b>Wireless Security</b>	Provide wireless LAN ACL (Access Control List) filtering
	Wireless MAC address filtering up to 16 entries
	Support WPS (Wi-Fi Protected Setup)
	Enable/Disable SSID Broadcast
<b>Wireless Advanced</b>	WMM(Wi-Fi Multimedia): 802.11e Wireless QoS
	Multiple SSID: up to 4
	Wireless Isolation: Enable it to isolate each connected wireless clients, to let them cannot access mutually.
	IAPP(Inter Access Point Protocol): 802.11f Wireless Roaming
	Provide Wireless Statistics
<b>Max. Clients</b>	Wireless: Up to 12
<b>Internet Connection Type</b>	Shares data and Internet access for users, supporting following internet access: <ul style="list-style-type: none"> <li>■ Dynamic IP</li> <li>■ Static IP</li> <li>■ PPPoE</li> <li>■ PPTP</li> <li>■ L2TP</li> </ul>
<b>Firewall</b>	NAT firewall with SPI (Stateful Packet Inspection)
	Built-in NAT server supporting Port Forwarding, Port Triggering, and DMZ
	Built-in firewall with IP address/ MAC address/ Port/ URL filtering
	Support ICMP-FLOOD, UDP-FLOOD, TCP-SYN-FLOOD filter, DoS protection
<b>Routing Protocol</b>	Static Routing
<b>VPN Pass-through</b>	SIP ALG, PPTP, L2TP, IPSec
<b>LAN</b>	Built-in DHCP server supporting static IP address distributing
	Support UPnP, Dynamic DNS
	Support IGMP Proxy
<b>System Management</b>	Web-based (HTTP) management interface
	SNTP time synchronize
	Easy firmware upgrade

	System Log supports Remote Log
<b>Standards Conformance</b>	
<b>IEEE Standards</b>	IEEE 802.11n (2T2R, up to 300Mbps) IEEE 802.11g IEEE 802.11b IEEE 802.11i IEEE 802.3 10Base-T IEEE 802.3u 100Base-TX IEEE 802.3x Flow Control
<b>Others Protocols and Standards</b>	CSMA/CA, CSMA/CD, TCP/IP, DHCP, ICMP, NAT, PPPoE, SNTP

### 3.3 Physical Specification

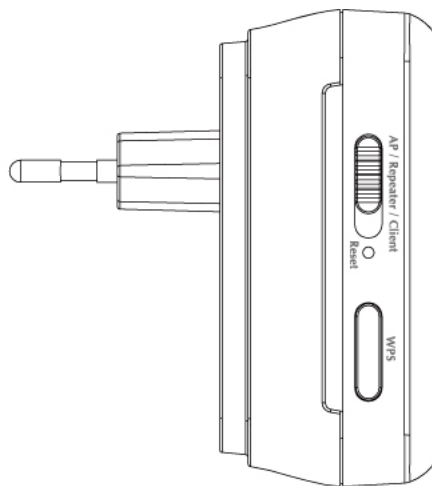
**Dimension:** 75 x 55 x 40 mm (L x W x H)

**Weight:** 80g (gross weight)

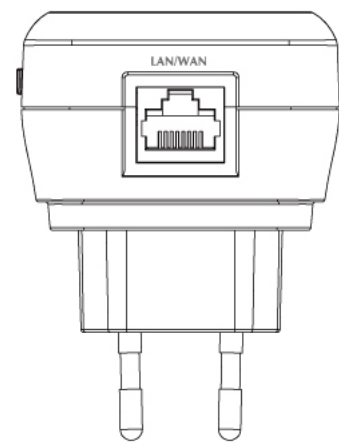
#### Overview



**Top View**

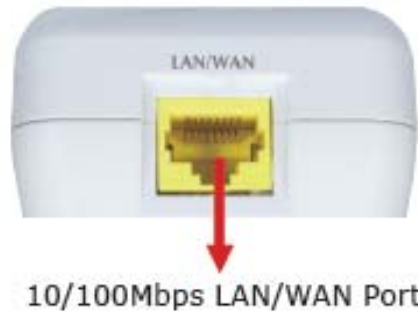


**Left Side View**



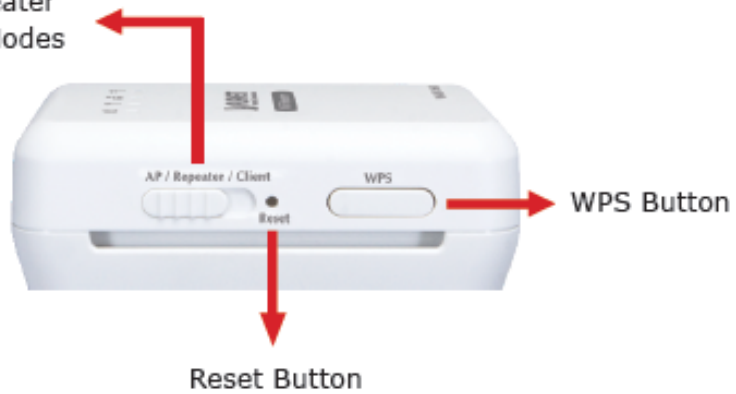
**Bottom Side View**

**Port Description**



**Switch & Button Description**

The Switch of AP, Repeater and Client Modes

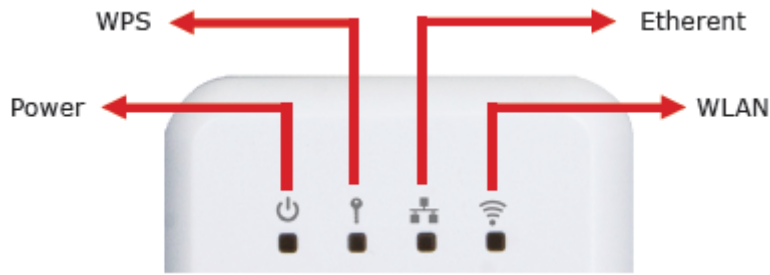


**Button definition**

Object	Description
<b>WAN/LAN</b>	If WNAP-1260 is set to the Router mode, the interface is a WAN interface which connects WNAP-1260 to WAN or uplink network devices. If WNAP-1260 is set to the Repeater/Client mode, the interface is an LAN interface.
<b>Reset</b>	Press the Reset button gently for 3-6 seconds and then release it. The system restores to the factory default settings.
<b>AP/Repeater/Client</b>	It is used for setting WNAP-1260 to the AP, Repeater, or Client mode. AP mode—including the Bridge and router modes Repeater mode—to expand wireless network coverage Client mode—equivalent to a wireless network adapter
<b>WPS</b>	For enabling WPS PBC mode. For more information, refer to WPS descriptions for each mode.



**LED Description**



**LED definition**

LED	COLOR	STATE	FUNCTION
Power	Green	On	The device is working normally.
	Red	On	The system is in the process of self-inspection or fails the self-inspection. Or it is in the process of software upgrade.
WPS	Green	Off	The WPS session is down.
		On	The WPS indicator keeps on for 5 minutes after WPS (Wi-Fi Protected Setup) connection succeeds.
		Quick blink	A terminal is attempting to connect to the WNAP-1260 through WPS but fails.
		Quick blink with a certain interval	Multiple terminals are connecting to the WNAP-1260 through WPS at the same time. WPS sessions conflict.
Ethernet	Green	Off	The Ethernet port is in the non-communication state.
		On	The Ethernet port is in the communication state.
		Blink	The Ethernet port is transmitting and receiving data.
WLAN	Green	Off	The WLAN connection is in the non-communication state.
		On	The WLAN connection is in the communication state.
		Blink	Data is being transmitted and received in the WLAN.

**3.4 Environmental Specification**

**Operating**

Temperature: 0°C ~45°C

Humidity: 10% ~ 90 % non-condensing

### **Storage**

Temperature: -20°C ~70°C

Humidity: 5% ~ 90 % non-condensing

### **3.5 BASIC PACKAGING**

- WNAP-1260 x 1
- Ethernet Cable x 1
- Quick Installation Guide x 1
- CD (User's Manual & Quick Installation Guide) x 1

### **3.6 PACKAGING INFORMATION**

**Dimension:** 153 x 94 x 62 mm (W x D x H)

**Weight:** 210g (gross weight)

40 pcs in one carton

.