

contec medical systems co., ltd

# CONTEC MEDICAL SYSTEMS

## *Product List*



CONTEC CONTEC MEDICAL SYSTEMS CO.,LTD

## BRIEF INTRODUCTION

Contec Medical Systems focusing on research, manufacture and distribution of medical instruments, was founded in 1992 as a high-tech company. At present there are more than 1200 employees in our company. Our product line covers a wide range of 13 categories. Most of the domestic hospitals are our customers.

Today, we have established a modern scientific and effective manufacture system and management system. The researching team endeavors to enhance the quality and competitive edge of the products. We have passed ISO 9000 and some of our products have got CE certificate.

Contec hopes to cooperate with international companies to supply more innovative design and advanced technology products.



New High Tech Industrial Zone of CONTEC



Manufacturing Building



Research & Development Building



**“Use Our Source to Build your Value”  
Your True Partner Contec Medical Systems**

Contec Medical Systems is an original equipment manufacturer (OEM) based in China. Contec Medical was originally founded in 1992 and is now capable of produce large quantity medical equipment in its newly built 32,000 square meters state-of-art facilities. Our products have been distributed to over 80 countries and regions and Contec Medical brand has become one of the most recognized brands in the industry.

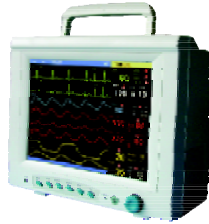
As an original equipment manufacturer, we not only sell our branded products but also offer medical equipment designing and manufacturing services to many of our domestic and international partners. With our state-of-art facility and adequacy of R&D experience and resource, we are able to offer high quality, high efficiency designs and short manufacture turn-around time with very low cost. Our goal is to help you to turn your ideas into real products in a very short turn-around time. Partnering with Contec Medical will help you to reduce the cost of your product and make it more competitive in the market.

Our complete product design solutions include ID design, mechanical design, mould design, schematic circuit diagram design, PCB design and manufacture. We have rich experience in software research and development. We also have dedicated service department to help you to obtain CE certificate for your products. Our partners will also receive the authority to use our existing CE Mark under mutual agreement. Contec Medical also offers private labeling and assemblage service to all of our partners throughout the world.

We sincerely welcome you to become one of our global partners. We are looking forward to establishing a successful business relationship with you!



## CMS9000 Multi-parameter Monitor



### Features

- Color TFT Screen, waveform up to 8 channels
- Light and portable with built-in rechargeable battery
- UP to 10 kinds of monitor parameters
- Arrhythmia analysis, pace-marker detection and S-T Segment analysis
- 72 hour storage and review of trend grams and tables, 40 second review of holographic waveforms.
- Built-in recorder(option)
- All-round monitor of adult ,pediatric and neonatal.
- Electrosurgical unit and defibrillation protected
- Standard parameters: ECG, NIBP, SPO<sub>2</sub>, Respiration, Temperature, Pulse rate
- Option parameters: EtCO<sub>2</sub>, CO, IBP, Thermal Printer
- Screen size:10.4", 12.1"

### ECG

- 5-lead or 3-lead selectable
- Input: 5-lead: RA; LA; RL; LL; V or R; L; N; F; C
- Lead selection: I; II; III; avR; avL; avF; Vx; CAL
- Gain selection: × 0.25, × 0.5, × 1, × 2, auto
- Sweep speed: 12.5mm/s, 25mm/s, 50mm/s
- Accuracy: ±1bpm or ±1%, whichever is greater
- Protection: Withstand 4000VAC/50Hz voltage in isolation against electrosurgical and defibrillation
- Calibration signal: 1mV±5%
- Operation modes: Diagnostic, Monitor, Surgery
- Heart rate range: Adult: 15-300bpm Pediatric/ Neonatal: 15-350bpm
- Measurement range: -2.0mV~2.0mV
- S-T detection: YES, Arrhythmia analysis: YES
- Alarm: YES, audible and visual alarm, alarm events recallable

### NIBP

- Method: Oscillometry
- Operation modes: Manual/Automatic/STAT
- Measurement unit: mmHg/KPa selectable
- Measurement types: Systolic, Diastolic, Mean
- Measurement range: Adult: 10-270mmHg
- Over-pressure protection: YES
- Resolution: 1mmHg
- Accuracy: The mean error shall be less than ± 5 mmHg, the standard deviation shall be less than ± 8 mmHg
- Alarm: Systolic, Diastolic, Mean

### SPO<sub>2</sub>

- Measurement range: 0-100%
- Accuracy: ±2digit (70~100%);
- 0~69% unspecified
- Alarm range: 0-100%

### Respiration

- Method: RA-LL impedance
- Measurement range: Adult: 0-120rpm, pediatric/neonatal: 0-150rpm
- Apnea alarm: YES

### Temperature

- Resolution: 0.1°C
- Channel: Dual-channel
- Measurement range: 0-50°C

### Option:

#### EtCO<sub>2</sub>

- Measurement Mode: Side-stream or mainstream
- Measurement range: EtCO<sub>2</sub>: 0-99mmHg
- Accuracy: CO<sub>2</sub> concentration
- Apnea alarm: YES

#### CO

- Method: Thermo-dilution
- Measurement range: CO: 0.1-20 lit./min.

#### IBP

- Channel: 2 channels
- Pressure transducer: Sensitivity: 5( mV/V/mmHg)
- Transducer sites: ART, PA, CVP, RAP, LAP, ICP
- Alarm range: -10~300mmHg

## CMS8000 Multi-parameter Monitor



### NIBP :

- Method : Oscillometry
- Modes:Manual/Auto/Continuous
- Auto measure time:Adjustable
- Measurement range:10-270mmHg

### ECG

- Lead mode : 3-lead or 5-lead
- Lead selection : I; II; III;avR ;avL ;avF ; V
- Heart rate range : Adult:15-300bpm;  
Pediatric/Neonatal:15-300bpm
- ECG waveform: 2 channels
- Accuracy :  $\pm 1$  bpm or  $\pm 1$  % ,which is greater
- S-T segment detection  
Measurement range : -2.0mv~2.0mv
- Alarm: Yes ,audible and visual alarm ,  
alarm events review

- High resolution 12.1" color TFT display
- Lightweight , compact and portable
- ECG ,SPO<sub>2</sub> ,NIBP ,RESP ,2-TEMP , PR
- Optional : 2-IBP , ETCO<sub>2</sub> , And thermal printer
- Built-in rechargeable lithium battery
- ECG waveforms of 7-leads display on the same screen
- 72-hours graphic and tabular trends of all parameters
- 72 alarm events of all parameters recall
- 32 seconds full-disclosure waveform review
- 500 NIBP measurement data can be storage and recall
- Data and waveforms color be adjustable
- Arrhythmia analysis and S-T segment analysis
- Suitable for adult ,pediatric and neonatal patient

### SPO<sub>2</sub>

- Measurement range:0-100%
- Accuracy:70-100%, $\pm 2$ % 0-69%,unspecified

### Pulse rate

- Range:20-254bpm
- Accuracy: $\pm 3$ bpm

### Respiration

- Method:RA-LL impedance
- Range:Adult:0-120rpm;pediatric/neonatal:0-150rpm
- Apnea alarm:Yes

### Temperature

- Range:0-50°C
- Accuracy : $\pm 0.1$ °C
- Channal:Dual-channel

## CMS 7000 Multi-parameter Monitor



CMS7000 Multi-parameter Patient Monitor is of high price/performance ratio, high security and low consumption of power. In order to insure the quality and reduce the risks may occurred in the operating process, it adopts the technology of full isolation floating, ECG anti-defibrillation protection, ECG Anti-high-frequency Interference, and NIBP Dual Over pressure Protection to prevent the damage may caused by single problem, so it makes this product safe and efficient.

### Features

- 12.1" High brightness TFT LCD display
- Portable , streamline handle design
- Big figure display

- ECG Waveforms of 7-lead displayed in one screen
- 96- hour tabular and graphic trends & data storage
- Compatible and self identify 3-lead and 5-lead ECG cable
- NIBP dual Over Pressure Protection
- Isolated floating, anti defibrillation protected and anti high -frequency interference
- Networking capacity

### Standard parameter & configuration

- 3 / 5 lead ECG, RESP,SPO<sub>2</sub>, NIBP, TEMP, PR

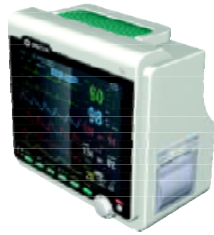
### Optional parameter & configuration

- 2-IBP, 2-TEMP, recorder , 12 lead ECG, ETCO<sub>2</sub>,Network



## CMS6000

### Multi-parameter Monitor



#### ECG

- Lead type: 5-lead
- Input: RA; LA; RL; LL; V
- Sweep speed: 12.5mm/s, 25mm/s, 50mm/s
- Accuracy:  $\pm 1$ bpm or  $\pm 1\%$ , which is greater
- Protection: Withstand 4000VAC/50Hz voltage in isolation against electrosurgical and defibrillation
- S-T detection: YES, Arrhythmia analysis: YES
- Alarm: YES, audible and visual alarm, alarm events recallable

#### Standard Configuration:

- ◇ ECG, NIBP, SPO<sub>2</sub>

#### Optional:

- ◇ RESP, 2-TEMP, 2-IBP, ETCO<sub>2</sub>, Network, Thermal Printer, Pacing Maker

- 8.4" color TFT display
- Suitable for adult, pediatric and neonatal patient
- Basic parameters (ECG, SPO<sub>2</sub>, NIBP) in a durable case for bedside monitoring and transport monitoring
- Audible and visual alarms with adjustable alarm ranges
- Networkable with CONTEC central monitoring system
- Powerful data management and storage capacity

#### NIBP

- Method: Oscillometry
- Operation modes: Manual/Automatic/STAT
- Measurement unit: mmHg/KPa selectable
- Measurement types: Systolic, Diastolic, Mean
- Over-pressure protection: YES

#### SPO<sub>2</sub>

- Measurement range: 0-100%
- Accuracy:  $\pm 2$ digit (70~100%);
- 0~69% unspecified

## CMS5000

### Vital Signs Monitor



#### Display:

- 7 segment LEDS for systolic pressure, diastolic pressure, SPO<sub>2</sub> and pulse rate
- 2.4" color LCD for waveforms, bargraphic, trend and system menu

#### NIBP:

- Method: Oscillometry
- Operation modes: Manual/ Automatic
- Auto Measure time: 1~250 minutes adjustable, interval 5 minutes
- Measurement range: 10~ 270mmHg
- Overpressure protection: Yes
- Resolution: 1mmHg
- Alarm: systolic, Diastolic, Mean, PR, SPO<sub>2</sub>

#### SPO<sub>2</sub>

- Measurement range: 0~100%
- Resolution: 1%
- Accuracy: 70~100%  $\pm 2\%$ , 0~ 69% unspecified
- Alarm range: 0~ 100%

#### Pulse Rate:

- Range: 25~ 250bpm
- Resolution: 1bpm
- Accuracy:  $\pm 2$ bpm or  $\pm 2\%$  (select larger)

#### Option: ECG, Thermal printer

- Dimension: 200\*230\*75mm
- Weight: about 1.0kg
- Power supply: AC 100~ 250V 50/60Hz

- Compact and portable, allowing for uninterrupted monitoring with built-in battery
- High bright LEDS display of NIBP, SPO<sub>2</sub> and pulse rate
- High resolution color LCD for trend tabular and SPO<sub>2</sub> waveforms display
- Manual/ auto/ continuous measurement of NIBP
- Adjustable audible and visual alarms
- Up to 2000 groups NIBP data storage or SPO<sub>2</sub> data up to 10 hours
- Suitable for adult, pediatric and neonatal patient

## CMS-800F Maternal/Fetal Monitor



### Features:

- Single or Twins Ultrasound transducer
- Data Graph and Trend Table Review of both mother and fetal
- Built-in thermal printer
- Built-in Network capability for connect with central monitoring software
- Programmable alarms
- All the colors and looks of the parameters can be customized
- Multi-face views, select focus on mother or fetal
- Storage of patient information and data

### Performance Specifications:

- Display: 8.4" Color TFT
- Resolution: 640x480
- Display Mode: Standard View, Fetal View, Mother View
- Indicator: Power indicator light, Alarm sound
- Interface: Socket for connecting fetal's FHR, TOCO, and Fetal Movement sensor  
Socket for connecting mother's ECG, NIBP and SPO2 sensor.  
Net Socket (RJ45) for communication cable with Central Monitoring Station Software.
- Power Supply: AC 100 ~ 240V, 50/60Hz, Power < 60VA
- Trend Graph: Resolution from 1s, 5s, 10s. Maximum time 96 hours.
- Trend Table: Resolution from 1s, 5s, 10s. Review up to 1000 items.
- Alarm: Adjustable High and Low limits. Three level audible and visual alarm.
- User Configuration: All the color of parameters and waves can be set according to user's willing.

### Technical specifications:

- Safety
- Meet the requirement of IEC60601 series
- Type of Protection: Class II with internal electric power supply

- Degree of Protection: BF
- Dimension and Weight
- Dimension: 92(W)x82(H)x22(D)mm
- Weight: 136g(with battery)

- Patient Range: Pregnant Adult

### FHR:

- Ultrasound Frequency: 2MHz
- Range: 50 ~ 210 bpm
- Resolution: 1bpm
- Accuracy:  $\pm 2$  bpm

### TOCO:

- Range: 0 ~ 100%
- Resolution: 1%
- Non-linear Error:  $\leq \pm 8\%$
- Zero control: Manual

### FETAL MOVEMENT:

- Manual fetal movement mark

### SPO2:

- Measurement Range: 0 ~ 100%
- Resolution: 1%
- Accuracy:  $\pm 2\%$  (70%~100%)  
0% ~ 69% unspecified
- Alarm Range: 0% ~ 100%
- Refreshing Rate: 1s

### Pulse Rate:

- Measurement Range: 25 ~ 250 bpm
- Resolution: 1bpm
- Accuracy:  $\pm 2$  bpm or  $\pm 2\%$  (select larger)
- Alarm Range: 25 ~ 250 bpm
- Refreshing Rate: 1s

### ECG:

- Lead mode: 3-lead or 5-lead
- Lead selection: I, II, III, AVR, AVL, AVF, V
- HR range: 15 ~ 300 bpm
- ECG Waveform: 2 channels
- Accuracy:  $\pm 2$  bpm or  $\pm 2\%$ , which is greater
- S-T segment detection range: -2.0mv ~ +2.0mv
- Arrhythmia analysis: 13 kinds of arrhythmia
- Alarm Range: 15 ~ 300 bpm

### NIBP:

- Method: Oscillometry
- Mode: Manual/Auto/Continuous
- Measurement Range: 10 ~ 270mmHg
- Auto Measure Interval: 5, 10, 15, 30, 45, 60, 90 minutes
- Resolution: 1mmHg
- Overpressure Protection: 300mmHg
- Alarm range: 10 ~ 270mmHg



## PM-60B Handheld ECG Monitor



### Features:

- 5 Leads 7 channel ECG
- Data Graph and Trend Table Review
- Alarm Event Review
- ST segment detection
- Arrhythmia analysis
- Freeze and review
- Convenient operation by touch screen
- 13 arrhythmia classification and 2-channel ST segment analysis
- Large SD card memory for more than 2000 patient cases storage
- Sync with PC based Software (WinXP and WinVista)

### Performance Specifications

- Display: 3.5" Color TFT
- Resolution: 320x240
- Display Mode: Standard face, Multi-ECG face, Big Num face
- Indicator: Power indicator light, Alarm Sound, Heart Beat Tone
- Interface: One dual-purpose socket for connecting ECG sensors and sync communication cables
- Power Supply: DC 5V, <300mA
- Battery: Built-in Li-Polymer, 2 hours for charging, 4 hours for continuous working.
- Trend Graph: Resolution from 1s, 5s, 10s. Maximum time 96 hours.
- Trend Table: Resolution from 1s, 5s, 10s. Review up to 2000 patient cases.
- Alarm: Adjustable High and Low limits. Three level audible and visual alarm

- User Configuration: All the color of parameters and waves can be set according to user's willing

### Technical specifications:

- Safety
- Meet the requirement of IEC60601 series
- Type of Protection: Class II with internal electric power supply
- Degree of Protection: CF
- Dimension and Weight
- Dimension: 92(W)x82(H)x22(D)mm
- Weight: 136g (with battery)
- Operation Environment:
- Temperature: 0°C ~ +40°C
- Humidity: 15% ~ 95%
- Storage Environment:
- Temperature: -20°C ~ +60°C
- Humidity: 10% ~ 95%
- Patient Range
- Neonate, Pediatric and Adult

### ECG

- Lead mode: 3 leads or 5 leads
- Option: 12 Leads
- Lead selection: I, II, III, AVR, AVL, AVF, V
- HR range: 15 ~ 300 bpm
- Alarm Range: 15 ~ 300 bpm
- Accuracy:  $\pm 2$  bpm or  $\pm 2\%$ , which is greater
- S-T segment detection range: -2.0mv ~ +2.0mv
- Arrhythmia analysis: 13 kinds of arrhythmia



## PM-60C ECG & SPO2 Monitor



### Features:

- Routine Check Mode and Continuous Monitoring Mode
- Data Graph and Trend Table Review
- Rich Analysis Report
- Perfect Mount Solution
- Convenient operation by touch screen
- Large SD card memory for more than 2000 patient cases storage
- Sync with PC based Software (WinXP and WinVista)

### Technical specifications:

- Safety
- Meet the requirement of IEC60601 series
- Type of Protection: Class II with internal electric power supply
- Degree of Protection: BF
- Dimension and Weight
- Dimension: 92(W)x82(H)x22(D)mm
- Weight: 136g(with battery)
- Operation Environment:
- Temperature: 0℃ ~ +40℃
- Humidity: 15% ~ 95%
- Storage Environment:
- Temperature: -20℃ ~ +60℃

- Humidity: 10% ~ 95%
- Patient Range
- Neonate ,Pediatric and Adult

### SPO2:

- Measurement Range: 0 ~ 100%
- Resolution: 1%
- Accuracy:  $\pm 2\%$  (70%~100%)  
0% ~ 69% unspecified
- Alarm Range: 0% ~ 100%
- Refreshing Rate: 1s
- Pulse Rate:
- Measurement Range: 25 ~ 250 bpm
- Resolution: 1bpm
- Accuracy:  $\pm 2\text{bpm}$  or  $\pm 2\%$   
(select larger)

- Alarm Range: 25 ~ 250 bpm
- Refreshing Rate: 1s

### ECG:

- Lead mode: 3-lead or 5-lead
- Lead selection: I, II, III, AVR, AVL, AVF, V
- HR range: 15 ~ 300 bpm
- Alarm Range: 15 ~ 300 bpm
- Accuracy:  $\pm 2\text{bpm}$  or  $\pm 2\%$ , which is greater
- S-T segment detection, range: -2.0mv ~ +2.0mv
- Arrhythmia analysis: 13 kinds of arrhythmia



## PM-60D Handheld Patient Monitor



### Features:

- Routine Check Mode and Continuous Monitoring Mode
- Data Graph and Trend Table Review
- Rich Analysis Report
- Perfect Mount Solution
- Convenient operation by touch screen
- Large SD card memory for more than 2000 patient cases storage
- Sync with PC based Software (WinXP and WinVista)

### Performance Specifications:

- Display: 3.5" Color TFT
- Resolution: 320x240
- Display Mode: Standard face, Waveform face, SPO2 view, ECG view, BigNum view
- Indicator: Power indicator light, Alarm sound, Pulse tone
- Interface: One dual-purpose socket for connecting sensors and communication cables
- Power Supply: DC 5V, <500MA
- Battery: Built-in Li-Polymer, 2 hours for charging, 3 hours for continuous working, 10 hours for standby mode
- Trend Graph: Resolution from 1s, 5s, 10s. Maximum time 96 hours.
- Trend Table: Resolution from 1s, 5s, 10s. Review up to 1000 items.
- Alarm: Adjustable High and Low limits. Three level audible and visual alarm
- User Configuration: All the color of parameters and waves can be set according to user's willing

### Technical specifications:

- Safety
- Meet the requirement of IEC60601 series
- Type of Protection: Class II with internal electric power supply
- Degree of Protection: BF
- Dimension and Weight

- Dimension: 92(W)x82(H)x22(D)mm
- Weight: 136g(with battery)
- Operation Environment:
- Temperature: 0°C ~ +40°C
- Humidity: 15% ~ 95%
- Storage Environment:
- Temperature: -20°C ~ +60°C
- Humidity: 10% ~ 95%
- Patient Range
- Neonate, Pediatric and Adult

### SPO2:

- Measurement Range: 0 ~ 100%
- Resolution: 1%
- Accuracy:  $\pm 2\%$  (70%~100%)  
0% ~ 69% unspecified

- Alarm Range: 0% ~ 100%

- Refreshing Rate: 1s

### Pulse Rate:

- Measurement Range: 25 ~ 250 bpm
- Resolution: 1bpm
- Accuracy:  $\pm 2$ bpm or  $\pm 2\%$  (select larger)
- Alarm Range: 25 ~ 250 bpm
- Refreshing Rate: 1s

### ECG:

- Lead mode: 3-lead or 5-lead
- Lead selection: I, II, III, AVR, AVL, AVF, V
- HR range: 15 ~ 300 bpm
- Alarm Range: 15 ~ 300 bpm
- Accuracy:  $\pm 2$ bpm or  $\pm 2\%$ , which is greater
- S-T segment detection, range: -2.0mv ~ +2.0mv
- Arrhythmia analysis: 13 kinds of arrhythmia

### NIBP:

- Method: Oscillometry
- Mode: Manual/Auto/Continuous
- Measurement Range: 10 ~ 270mmHg
- Auto Measure Interval: 5, 10, 15, 30, 45, 60, 90 minutes
- Resolution: 1mmHg
- Overpressure Protection: 300mmHg
- Alarm range: 10 ~ 270mmHg



## PM-70 Patient Monitor



### Features:

- Routine Check Mode and Continuous Monitoring Mode
- Data Graph and Trend Table Review
- Rich Analysis Report
- Sync with PC based Software (WinXP and WinVista)
- lightweight and easy-to-use portable unit
- Built-in NIBP module
- Automated & on-demand NIBP measurements
- User or system-defined inflation pressure
- ECG is optional

### Performance Specifications

- Display: 3.5" Color TFT
  - Resolution: 320x240
  - Display Mode: Standard face, Waveform face
  - Indicator: Power indicator light, Alarm sound, Pluse tone
  - Interface: socket for connecting sensors and sockets for communication cables
  - Power Supply: DC 5V, <300mA
  - Battery: Built-in Li-Polymer, 2 hours for charging, 3 hours for continous working 8 hours for standby mode
  - Trend Graph: Resolution from 1s, 5s, 10s. Maximum time 96 hours.
  - Trend Table: Resolution from 1s, 5s, 10s. Review up to 1000 items.
  - Alarm: Ajustable High and Low limits. Three level audible and vistual alarm
  - User Configuration: All the color of parameters and waves can be set according to user's willing
- Humidity:** 15% ~ 95%
- Storage Environment:**  
Temperature: -20°C ~ +60°C  
Humidity: 10% ~ 95%
- Patient Range
  - Neonate ,Pediatric and Adult
- SPO2:**
- Measurement Range: 0 ~ 100%
  - Resolution: 1%
  - Accuracy:  $\pm 2\%$  (70%~100%)  
0% ~ 69% unspecified
  - Alarm Range: 0% ~ 100%
  - Refreshing Rate: 1s
- Pulse Rate:**
- Measurement Range: 25 ~ 250 bpm
  - Resolution: 1bpm
  - Accuracy:  $\pm 2$  bpm or  $\pm 2\%$  (select larger)
  - Alarm Range: 25 ~ 250 bmp
  - Refreshing Rate: 1s
- NIBP:**
- Method: Oscillometry
  - Mode: Manual/Auto/Contiuous
  - Measurement Range: 10 ~ 270mmHg
  - Atuo Measure Interval: 5, 10, 15, 30, 45, 60, 90 minutes
  - Resolution: 1mmHg
  - Overpressure Protection: 300mmHg
  - Alarm range: 10 ~270mmHg
- Technical specifications:**
- Safety  
Meet the requirment of IEC60601 series  
Type of Protection: Class II with internal electirc power supply
  - Degree of Protection: BF
  - Dimention and Weight  
Dimention: 145(W)x95(H)x37(D)mm  
Weight: 400g(with battery)
  - Operation Environment:  
Temperature: 0°C ~ +40°C

## CMS-60D Handheld Oximeter



### Features:

- Routine Check Mode and Continuous Monitoring Mode
- Sync with PC based Software (WinXP and WinVista)

### Performance Specifications:

- Display: 1.8" Color TFT
- Resolution: 160x128
- Display Mode: Display Direction adjustable
- Indicator: Power indicator light, Alarm sound, Pluse tone
- Interface: Socket for connecting SPO2 sensors and Socket for communication cables
- Power Supply: DC 5V, <60MA
- Battery: Builtin Li-Polymer, 2 hours for charging, 30 hours for continous working.
- Record: Data can be recorded up to 24 hours
- Alarm: Ajustable High and Low limits.

### Technical specifications:

- Safety
- Meet the requirement of IEC60601 series
- Type of Protection: Class II with internal electirc power supply
- Degree of Protection: BF
- Dimention and Weight
- Dimention: 60(W)x110(H)x23(D)mm
- Weight: 200g(with battery)
- Operation Environment:
- Temperature: 0℃ ~ +40℃
- Humidity: 15% ~ 95%
- Storage Environment:
- Temperature: -20℃ ~ +60℃
- Humidity: 10% ~ 95%
- Patient Range
- Neonate, Pediatric and Adult

### SPO2:

- Measurement Range: 0 ~ 100%
- Resolution: 1%
- Accuracy:  $\pm 2\%$  (70%~100%),  
0% ~ 69% unspecified
- Alarm Range: 0% ~ 100%
- Refreshing Rate: 1s

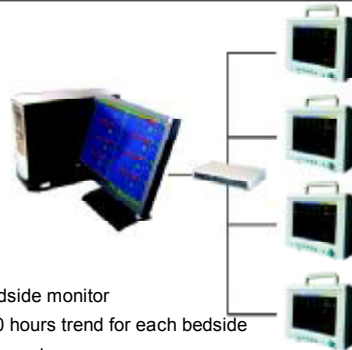
### Pulse Rate:

- Measurement Range: 25 ~ 250 bpm
- Resolution: 1bpm
- Accuracy:  $\pm 2$ bpm or  $\pm 2\%$  (select larger)
- Alarm Range: 25 ~ 250 bmp
- Refreshing Rate: 1s

## CMS9000 Central Monitor System

### Features

- Networked to CMS9000 patient monitor
- Optional dual-screen display
- Up to 64 bedside monitors connectable
- High-resolution display of 32 waveforms for 16 beds simultaneously with user selectable size
- Review of the latest 720 alarm events for each bedside monitor
- Review of the latest 6 minutes short trend and 240 hours trend for each bedside
- Display of multi-lead ECG waveforms and S-T segment
- 72-hour full-disclosure waveform store and review
- Thermal recorder and optional laser printer
- 10,000 history patient monitoring information
- All-round system help information including operation guide of central monitor system and patient monitor



## PM-80B ECG Monitor



### Features:

- Routine Check Mode and Continuous Monitoring Mode
- Data Graph and Trend Table Review
- Rich Analysis Report
- Perfect Mount Solution
- Convenient operation by touch screen
- Large SD card memory for more than 2000 patient cases storage
- Sync with PC based Software (WinXP and WinVista)

### Performance Specifications:

- Display: 2.8" Color TFT
- Resolution: 320x240
- Display Mode: Standard face, Multi-ECG face, Big Num face
- Indicator: Power indicator light, Alarm sound, Heart Beat tone
- Interface: One dual-purpose socket for connecting ECG sensors and sync communication cables
- Power Supply: DC 5V, <300mA
- Battery: Builtin Li-Polymer, 2 hours for charging, 4 hours for continuous working
- Trend Graph: Resolution from 1s, 5s, 10s. Maximum time 96 hours.
- Trend Table: Resolution from 1s, 5s, 10s. Review up to 1000 items.
- Alarm: Adjustable High and Low limits. Three level audible and visual alarm
- User Configuration: All the color of parameters and waves

can be set according to user's willing

### Technical specifications:

- Safety
- Meet the requirement of IEC60601 series
- Type of Protection: Class II with internal electric power supply
- Degree of Protection: BF
- Dimension and Weight
- Dimension: 108(W)x58(H)x18(D)mm
- Weight: 130g(with battery)
- Operation Environment:
- Temperature: 0°C ~ +40°C
- Humidity: 15% ~ 95%
- Storage Environment:
- Temperature: -20°C ~ +60°C
- Humidity: 10% ~ 95%
- Patient Range
- Neonate, Pediatric and Adult

### ECG:

- Lead mode: 3-lead or 5-lead
- Lead selection: I, II, III, AVR, AVL, AVF, V
- HR range: 15 ~ 300 bpm
- Accuracy:  $\pm 2$ bpm or  $\pm 2\%$ , which is greater
- S-T segment detection range: -2.0mv ~ +2.0mv
- Arrhythmia analysis: 13 kinds of arrhythmia
- Alarm Range: 15 ~ 300 bpm



## PM-80C Patient Monitor



### Features:

- Routine Check Mode and Continuous Monitoring Mode
- Data Graph and Trend Table Review
- Rich Analysis Report
- Perfect Mount Solution
- Convenient operation by touch screen
- Large SD card memory for more than 2000 patient cases storage
- Sync with PC based Software (WinXP and WinVista)

### Performance Specifications:

- Display: 2.8" Color TFT
- Resolution: 240 x 320
- Display Mode: Standard face, Waveform face, Single SPO2 view, Single ECG view, BigNum view
- Indicator: Power indicator light, Alarm sound, Pluse tone
- Interface: One dual-purpose socket for connecting sensors and communication cables
- Power Supply: DC 5V, <300MA
- Battery: Built-in Li-Polymer, 2 hours for charging, 3 hours for continuous working 10 hours for standby mode
- Trend Graph: Resolution from 1s, 5s, 10s. Maximum time 96 hours.
- Trend Table: Resolution from 1s, 5s, 10s. Review up to 1000 items.
- Alarm: Adjustable High and Low limits. Three level au

dible and visual alarm

### Technical specifications:

- Safety
- Meet the requirement of IEC60601 series
- Type of Protection: Class II with internal electric power supply
- Degree of Protection: BF
- Dimension and Weight
- Dimension: 108(W)x58(H)x18(D)mm
- Weight: 130g(with battery)
- Operation Environment:
- Temperature: 0°C ~ +40°C
- Humidity: 15% ~ 95%
- Storage Environment:
- Temperature: -20°C ~ +60°C
- Humidity: 10% ~ 95%
- Patient Range
- Neonate, Pediatric and Adult

### SPO2:

- Measurement Range: 0 ~ 100%
- Resolution: 1%
- Accuracy:  $\pm 2\%$  (70%~100%)  
0% ~ 69% unspecified
- Alarm Range: 0% ~ 100%
- Refreshing Rate: 1s

### Pulse Rate:

- Measurement Range: 25 ~ 250 bpm
- Resolution: 1 bpm
- Accuracy:  $\pm 2$  bpm or  $\pm 2\%$  (select larger)
- Alarm Range: 25 ~ 250 bpm
- Refreshing Rate: 1s

### ECG:

- Lead mode: 3-lead or 5-lead
- Lead selection: I, II, III, AVR, AVL, AVF, V
- HR range: 15 ~ 300 bpm
- Accuracy:  $\pm 2$  bpm or  $\pm 2\%$ , which is greater
- S-T segment detection, range: -2.0mv ~ +2.0mv
- Arrhythmia analysis: 13 kinds of arrhythmia
- Alarm Range: 15 ~ 300 bpm

## PM-90 Patient Monitor with Printer



### Features:

- Routine Check Mode and Continuous Monitoring Mode
- Data Graph and Trend Table Review
- Rich Analysis Report
- Large SD card memory for more than 2000 patient cases storage
- Sync with PC based Software (WinXP and WinVista)

### Performance Specifications:

- Display: 3.5" Color TFT
- Resolution: 320x240
- Display Mode: Standard face, Waveform face, Single SPO2 view, Single ECG view, BigNum view
- Indicator: Power indicator light, Alarm sound, Pluse tone
- Interface: One dual-purpose socket for connecting sensors and communication cables
- Power Supply: DC 5V, <500MA
- Battery: Built-in Li-Polymer, 2 hours for charging, 3 hours for continuous working 10 hours for standby mode
- Trend Graph: Resolution from 1s, 5s, 10s. Maximum time 96 hours.
- Trend Table: Resolution from 1s, 5s, 10s. Review up to 1000 items.
- Alarm: Adjustable High and Low limits. Three level audible and visual alarm

### Technical specifications:

- Safety
- Meet the requirement of IEC60601 series
- Type of Protection: Class II with internal electric power supply
- Degree of Protection: BF

- Dimension and Weight
- Dimension: 185(W)x90(H)x40(D)mm
- Weight: 500g(with battery)
- Operation Environment:
- Temperature: 0°C ~ +40°C
- Humidity: 15% ~ 95%
- Storage Environment:
- Temperature: -20°C ~ +60°C
- Humidity: 10% ~ 95%
- Patient Range
- Neonate, Pediatric and Adult

### SPO2:

- Measurement Range: 0 ~ 100%
- Resolution: 1%
- Accuracy:  $\pm 2\%$  (70%~100%)  
0% ~ 69% unspecified
- Alarm Range: 0% ~ 100%
- Refreshing Rate: 1s

### Pulse Rate:

- Measurement Range: 25 ~ 250 bpm
- Resolution: 1bpm
- Accuracy:  $\pm 2$ bpm or  $\pm 2\%$  (select larger)
- Alarm Range: 25 ~ 250 bpm
- Refreshing Rate: 1s

### ECG:

- Lead mode: 3-lead or 5-lead
- Lead selection: I, II, III, AVR, AVL, AVF, V
- HR range: 15 ~ 300 bpm
- Accuracy:  $\pm 2$ bpm or  $\pm 2\%$ , which is greater
- S-T segment detection, range: -2.0mv ~ +2.0mv
- Arrhythmia analysis: 13 kinds of arrhythmia
- Alarm Range: 15 ~ 300 bpm

### NIBP:

- Method: Oscillometry
- Mode: Manual/Auto/Continuous
- Measurement Range: 25 ~ 260mmHg
- Auto Measure Interval: 5, 10, 15, 30, 45, 60, 90 minutes
- Resolution: 1mmHg
- Overpressure Protection: 300mmHg
- Alarm range: 25 ~ 260mmHg



## CONTEC-06 Ambulatory Blood Pressure Monitor



CONTEC-06 ABPM is a non-invasive, silent, compact, lightweight and reliable blood pressure monitor for ambulatory application. 2 AA alkaline batteries can sustain more than 600 measurements in a period of 48 hours. It provide double safety protection and can be connected to any laptop or desktop PC. The software provides a user-friendly interface and comprehensive analysis.

### Specification

- Measurement method: Oscillometry
- Operation model: Manual/Automatic/STAT
- Measurement unit: mmHg/KPa selectable
- Measurement types: Systolic, Diastolic, Mean
- Measurement range:
  - Adult presure: 10 to 270 mmHg;Pulse rate: 30 to 220;
  - Pediatric presure:10 to 200 mmHg;Pulse rate: 30 to 220;
- Resolution: 1 mmHg
- Over-presure protection: Yes
- Input/output: RS232
- Accuracy:Pulse rate:±2% or ±3 BPM which is greater
- Blood presure :Meets ANSI/AAMI SP10-1992
- Safety: Independent safety microprocessor monitors cuff presure, measurement time as well as the operation of the main microprocessor

### (Option:SPO<sub>2</sub>)



## PM50 NIBP/SPO<sub>2</sub> Patient Monitor



### Features:

- Compact and portable, easy to use
- Suitable for adult, pediatric and neonatal patients.
- Large color LCD display of NIBP, SPO<sub>2</sub> and Pulse rate
- Adjustable audible and visual alarms
- Real-time ambulatory monitoring. 24 hours storage and re view of data.
- All data can be transferred to a PC through Windows-based software for review and print.

### Specification:

- Display: Color LCD
  - Power: Two "AA", 1.5V Alkali Battery
  - Dimension: 127\*66\*36mm
  - Weight: < 350g (Including Batteries)
- ### NIBP
- Method: Oscillometry.
  - Mode: Manual/Automatic/continuous
  - Measurement Range: 10-270mmHg (Max: 280 mmHg)
  - Automatic Measurement Interval 1.2.3.4.5.10.15.30.60.90 minutes
  - Resolution: 1mmHg
  - Alarm:Systolic,Diastolic,mean
  - Alarm range:10-270mmHg

### SPO<sub>2</sub>

- Measurement Range:0~100%
- Resolution: 1%
- Accuracy: 70~100% , ±2%  
0~69% unspecified
- Alarm range:0-100%

### Pulse Rate

- Range:25~250 bpm
- Resolution: 1bpm
- Accuracy: ±2bpm or ±2%(Select larger)
- Alarm range:0-254bpm

## CMS 800G Fetal Monitor



### Features

- Light weight, space-saving, easy to use
- 8.4" LCD screen, folding 60 degree
- Display waveforms and digitals simultaneously
- FHR 120-160 normal area highlight
- 12hours data and waveform storage and review
- FHR upper and lower limit alarm
- Twins monitoring function option
- High sensitive 9 Elements 1MHz Pulse Doppler transducer
- Built-in high resolution and long life printer
- Built-in PC Network can be connected to the central monitoring system

### Specification

- Display : 8.4" color LCD display , 60 degree folding
- Recorder: Thermal printer
  - Record paper : Z-fold, thermal paper
  - Printing width : 112mm
  - Effective printing width : 104mm
  - Printing speed : 1,2,3cm/min
  - Record message : Data, time, TOCO Trend graph, paper speed, FHR type, FHR Trend graph, etc
- Signal interface : RJ 45 interface
- FHR
  - Technique : Ultrasound pulse Doppler and auto correlation
  - Ultrasound Frequency : 1MHz
- FHR range : 50-210bpm
- Resolution : 1bpm
- Accuracy :  $\pm 2$ bpm
- TOCO
  - Range : 0-100%
  - Resolution : 1%
  - Non-linear Error :  $\leq \pm 10\%$
  - Zero control : Manual
- Fetal movement
  - Manual Fetal movement mark
- Power supply
  - AC 100-240v, 50/60Hz
  - P max=60VA
- Dimension : 320\*260\*80mm
- Weight : 3.2kg

## Sonotrax Pocket Fetal Doppler



Sonotrax series ultrasonic pocket fetal doppler can meet the routine examination requirements of obstetricians, midwives and pregnant women. SonotraxA is a high performance model with FHR digital LCD display, SonotraxB is for simple auscultation (intermittent listening)

### Features

- Streamline and portable design, compact and light
- Large LCD display with backlight.
- Ergonomic design Easy to use
- High sensitivity interchangeable probe
- Support 2MHz, 3MHz, 4MHz, 8MHz waterproof probes
- Built-in speaker and sound output interface
- Automatic power-off
- Real-time FHR display, Average. FHR display and Manual calculation
- Battery status indicator and low power indication

### Technical Specification

- LCD display:
  - screen size: 45\*25 mm
  - display: 160\*96 dpi LCD display
  - backlight: can be on/off
- Ultrasound:
  - Frequency: 2.0MHz in continual
  - Intensity:  $< 10$ mW/cm<sup>2</sup>
- FHR:
  - Measurement range: 50-120 bpm
  - Resolution: 1 bpm
- Power supply:
  - Two "AA" battery Power:  $< 0.8$  W
  - continuous operating time  $> 10$  hours
  - Auto shut-off: 1 minute
- Dimension:
  - Dimension: 135\*95\*35mm
  - Weight: about 180g (including batteries)

## Baby Sound Pocket Fetal Doppler



Baby Sound A

Baby Sound B

Baby Sound Fetal Doppler is a device which is safe and easy to use, it is specially designed for homecare, allowing pregnant woman to listen to their unborn baby's heart sound, movements and hiccups from as early as 10 to 12 weeks. It is suitable for expectant mother to carry out regular examination on her baby in between routine hospital examination. It not only can reduce the would-be mother's anxiety but also can allow other family members to listen to the baby's heart sound.

It can be connected to the computer, CD or tape recorder for recording the baby heart sound, meantime you can share your baby's heart sound with family and friends via network.

There are two different models available: Baby sound A and Baby sound B. Both of them have audio output socket. Baby Sound A is designed for simple auscultation. Baby Sound B integrates a single chip CPU, LCD display and accurate arithmetic software, it can display the FHR is very convenient to get baby's accurate heart rate.

### Features

- The probe and main units integrated together
- Delicate and compact design, portable to use
- Particular two audio output socket design can let expectant mother and father hear the fetal heart sound at the same time
- High sensitive doppler probe
- Low ultrasound output intensity, much lower than the relative government standard, and with very high security
- Low power consumption, 2 AAA size batteries can last more than 6 hours for continuous use (depend on battery type and volume)
- Can connect to a computer or recorder to record the fetal heart sound with recording Cable at the same time of monitoring fetal heart sound
- LCD Display for FHR with high accuracy (Baby Sound B)
- Screen will be locked automatically without signal for 15s, which is convenient for pregnant woman to operate individually. (Baby Sound B)



### Specification:

- Classification:
  - Anti-electroshock Type: Internally powered equipment.
  - Anti-electroshock Degree: Type B equipment
- Power Supply: 1.5V Battery × 2 (Size: AAA)
- LCD Display: 25 × 14 mm (Baby Sound B)
- FHR Display: (Baby Sound B only)
- FHR Measuring Range: 50~240BPM  
Accuracy: ± 2 BPM
- Probe:
  - Working Frequency: 2.0MHz ± 10%
  - Intensity < 10mW/cm<sup>2</sup>
  - Working Mode: Continuous wave Doppler
- Physical Characteristic:
  - Size: (L)110mm × (W)55mm × (H)16.8 mm
  - Weight: About 80g (including batteries)



## CMS280A Portable Linear & Convex Ultrasound Scanner

CMS280A is designed for the medical examination of abdominal organs including liver, gallbladder, spleen, pancreas, kidney, uterus, and the urinary bladder, etc.



### Features

- Adopt CDA & CDF to improve distinguishing rate of image and detecting depth
- Provide advanced special auto-protection for probe to make the whole unit more reliable and effective and prolong the life of probe
- Scientific matching to avoid wasting of ultrasound energy effectively, improve detecting performance of probe greatly and assure the definition of image
- Pretreatment: Dynamic wave-filter, Gain compensation and adjustment.
- Post-processing treatment: The speed of scan, correlative frame,  $\gamma$  Parameter, correlative line and choice of window curve.
- Option: Multi-frequency probe, transvaginal probe, 7.5MHz Linear probe, Cine loop memory, Double sockets

### Specification

- Scanning mode: B B/B B/M M
- 7.4 inch display, 3.5M convex
- Zoom:  $\times 1$ ,  $\times 1.2$ ,  $\times 1.5$ ,  $\times 2$  (according to the selected probe)
- Angel on the probe: 60o for convex probe, 86o for transvaginal probe
- Measuring: Distance, circumference, area, volume, heart rate, pregnant week and fetal weight
- Character display: ID number, time, date, body marks, probe position, focus, frame rate, zoom, gray scale, puncture guide line, menu.



## CMS600A Portable Convex ultrasound Scanner



- Portable and attractive plastic injection design: small-sized and lightweight, with clip
- Finer image display and higher resolution due to the application of the latest technologies, such as dynamic focusing, variable aperture, dynamic compressing, dynamic frequency, edge highlight and digital scanning etc.
- Display mode: B, B/B B/M and M
- Probe Frequency: 2.5 MHz- 7.5MHz
- Scan Mode: 3.5 MHz 80 Element Convex, Electronic Linear
- Measurement: Distance, Circumference, Area, Heart rate, EF slope, GS, BPD, CRL, HC, AC, FL for Fetal Week and weight.
- Dual direction 256 frame cine loop.
- Standard Configuration: Main unit, 3.5 MHz convex Probe
- Option: multi-frequency Convex Probe, Linear Probe and Transvaginal Probe

## CMS600A Plus

### Portable Convex Ultrasound Scanner



- Portable and attractive plastic injection design: small-sized and lightweight, with clip
- Finer image display and higher resolution due to the application of the latest technologies, such as dynamic focusing, variable aperture, dynamic compressing, dynamic frequency, edge highlight and digital scanning etc.
- Easy operation with newly designed keyboard
- 8 Gamma correction curves, pre-processing, frame correlation, histogram, interpolation, digital scanning, post-processing, etc.
- Screen filter ensuring a comfortable operation

- Display mode: B, B/B B/M and M
- Probe Frequency: 2.5 MHz - 7.5MHz
- Scan Mode: 3.5 MHz 128 Element Convex, Electronic Linear
- Measurement: Distance, Circumference, Area, Heart rate, EF slope, GS, BPD, CRL, HC, AC, FL for Fetal Week and weight.
- Dual direction 256 frame cine loop.
- Standard Configuration: Main unit, 3.5 MHz convex Probe
- Option: multi-frequency Convex Probe, Linear Probe and Transvaginal Probe



## CMS600C/D

### Mobile Convex Ultrasound Scanner



- Portable and attractive plastic injection design: small-sized and lightweight, with clip
- Finer image display and higher resolution due to the application of the latest technologies, such as dynamic focusing, variable aperture, dynamic compressing, dynamic frequency, edge highlight and digital scanning etc.
- Easy operation with newly designed keyboard
- 8 Gamma correction curves, pre-processing, frame correlation, histogram, interpolation, digital scanning, post-processing, etc.
- Screen filter ensuring a comfortable operation
- Software package including obstetrics, gynecology, urology, cardiology, and report generated automatically
- Flicker-free VGA monitor

- Scan Mode: CMS600C: 3.5 MHz 80 Element Multi-frequency System and Probe  
CMS600D: 3.5 MHz 128 Element Multi-frequency System and Probe

- Display mode: B, B/B B/M and M
- Probe Frequency: 2.5 MHz - 7.5MHz
- Monitor: 12 inch (CMS600C), 14 inch (CMS600D)
- Measurement: Distance, Circumference, Area, Heart rate, EF slope, GS, BPD, CRL, HC, AC, FL for Fetal Week and weight.
- Dual direction 256 frame cine loop.

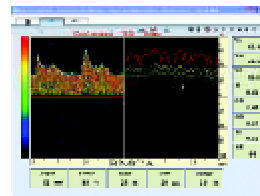


## TCD- II × 2P Transcranial Doppler System(Dual Channel)



Transcranial Doppler ( TCD ) system non-invasively measures intracranial blood flow velocities using pulse echo ultrasonic probe. Based upon spectrum analysis technology, hemodynamics indices are calculated. Changes of these indices correlate with all kinds of cranial blood diseases such as vasoconstriction or vasodilation. This technology has been proved to be a very effective way to diagnose cerebral vessel diseases. This method of measurement is particularly useful for examining the major arteries supplying blood to the brain.

- User-friendly: Extensive working modes, including: intracranial, extracranial, multigate, bilateral and monitoring examination modes
- Multi-gate capacity
- Bilateral: dual channel capability for making a routine diagnosis or real-time monitoring of cerebral circulation. Monitor multiple vessel segments simultaneously or choose multifrequency settings
- Full range of probe selection: 2 MHz/4MHz/8MHz probe
- Automatic emboli detection
- Special HITS software
- Audio playback
- Patient monitoring trend Doppler data chart



## TCD- II Transcranial Doppler System(Single Channel)



Transcranial Doppler (TCD) system non-invasively measures intracranial blood flow velocities using pulsed echo ultrasound probe. Base upon spectrum analysis, Hemodynamics indices are calculated. Change of these indices correlate with all kinds of cranial blood diseases such as vasoconstriction or vasodilation. This technology has been proved to be a very effective way to diagnose cerebral vessel diseases. This method of measurement is particularly useful for examining the major arteries supplying blood to the brain.

### Standard Accessories

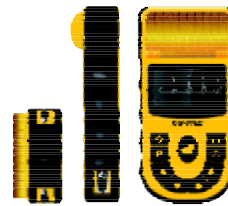
- ◇ 2MHz probe:1pc
- ◇ 4MHz probe:1pc
- ◇ Anti-artificial Identification:25 BPM anti-artificial identification judgement
- ◇ Accuracy: ± 1 BPM
- ◇ Size and Weight
- ◇ Size (Monitor):330 (L) x 270 (W) x 100 (H)
- ◇ Weight (Monitor):About 3.5 kg

### Function

- ∅ Windows operation system
- ∅ Multi-gate capacity
- ∅ Preset system and vessel parameter including depth, power, predigest
- ∅ Real time spectrum playback
- ∅ Patient monitoring trend Doppler data chart
- ∅ Database management and statistical
- ∅ Automatic report printout and report preview
- ∅ MO disk available
- ∅ High performance

## CMS-80A Hand-Held Single Channel ECG

- Input circuit : Floating
- Calibrating Voltage :1mV ±5%
- Input current :<50nA     ■ CMRR :>103dB     ■ A/D :12bit
- Frequency Response: 0.05Hz--150Hz
- Filter :AC 50/60Hz     EMG: 35-45Hz
- Skin Voltage Tolerance :±300mV
- Sensitivity Setting:5 , 10 , 20mm/mV, conversion deviation±5%
- Noisy Level : ≤ 15μVp-p
- Safety standard :IEC class I, type CF
- Lead selection :Automatic and Manual
- Operation mode :Automatic and Manual
- Display :LCD 160\*96     visual size: 34\*60
- Recording system :Thermal-array printing
- Power supply: AC220V±10%     DC 7.4 lithium battery
- Size:190\*90\*40     ■ Weight:800g



CMS-80A

## ECG-100G Digital Single Channel ECG



### Feature:

- Large LCD display waveform and data
- High-resolution thermal printing array system
- Frequency response is as high as 150Hz
- Capable of printing continuously on channel trace and annotations including lead mark and parameter such as sensitivity, paper speed and filter operation status
- High resolution digital filter inhibits baseline drift without affecting ECG waveform
- Concept of floating input circuit meets IEC safety standard
- Rechargeable battery supporting more than 50 patient examinations

- Input Circuit : Floating; Protection against Defibrillator effect
- Lead: Standard 12 Leads, Lead change automatically
- Patient Current Leakage: <10 μ A     ■ Input Impedance: ≥ 50 M Ω
- Calibrating Voltage: 1mV ± 3%     ■ A/D Conversion: 12 bit
- Frequency Response: 0.05Hz~150Hz (IEC)     ■ Time Constant: >3.2seconds
- CMRR>100dB     ■ EMG Filter: 35Hz (-3dB) / 25Hz (-3dB)
- Paper Speed: 25, 50mm/s ± 3%
- Recording Paper: 50mm,20m, high-speed roll
- Input Circuit Current: ≤ 50nA     ■ Safety Standard: IEC class I, type CF
- Sensitivity: 1/2, 1, 2 (cm/mV)
- Skin Voltage Tolerance: ± 300mV     ■ Noise Level: <15μVp-p
- Dimensions: 310mm × 230mm × 70mm     ■ Weight: 2.75kg

### Standard Accessories:

Patient Cable, Thermal Printing Paper, Limb Electrodes, Chest Electrodes, Power Supply Cable, Grounding Wire



## ECG-300G Digital Three Channel ECG



- Lead; Standard 12 leads
- Patient leak current; <10 $\mu$ A
- Input impedance;  $\geq$ 50M
- Frequency response; 0.05Hz~150Hz(-3dB)
- Time constant; Time constant >3.2s
- CMRR; 100dB
- Dimension of recording paper:  
80mm(w) $\times$ 20m(L)paper
- Paper speed; 25mm/s, 50mm/s

### Feature:

- 3.5" TFT screen
- 12 leads simultaneous display
- Thermal printing system
- Power supply both AC and DC
- High capacity built-in lithium rechargeable battery
- Battery power supports continually record 150 pieces of ECG
- Built-in Database
- Store more than 1000 pieces of archive
- Digital signal processor for filter
- Auto-measurement, auto-analysis and auto interpretation functions
  - Sensitivity choice: 5, 10, 20mm/mV. Standard sensitivity is 10mm/mV+0.2mm/mV
  - Measurement parameters: HR, P-R interval, P-Duration, QRS Duration, Q-T interval, Q-Tc, P Axis, QRS Axis, T Axis, R(V5), S(V1), R(V5)+S(V1)
  - Product safety type: Class 1. Type CF, there is defibrillation and pacing protection circuit.
  - Enduring polarization voltage: +300mV
  - Noise level:  $\leq$  15 $\mu$ Vp-p
  - Size: 315mm(L)  $\times$  215mm(W)  $\times$  77mm(H)
  - Net Weight: 2.25Kg

## ECG-1200 Digital Twelve Channel ECG



### Specifications

- ※ Input Circuit : Floating; Protection against Defibrillator effect
- ※ Lead; Standard 12 Leads, Lead change automatically
- ※ Patient Current Leakage: <10  $\mu$  A
- ※ Input Impedance:  $\geq$  50 M  $\Omega$
- ※ Calibrating Voltage: 1mV  $\pm$  3%
- ※ A/D Conversion: 12 bit
- ※ Display: 320  $\times$  240 LCD
- ※ Frequency Response: 0.05Hz~150Hz
- ※ Time Constant; >3.2seconds
- ※ CMRR; >100dB

### Feature:

- Simultaneous 12 leads acquisition and printing
- Automatic measurement and interpretation; R-R analysis
- 12 leads simultaneous display on large backlight LCD 320  $\times$  240
- Digital design and filter; Thermal array printer
- Recording on A4 size paper
- Baseline auto-adjustable; Rhythm lead selectable
- DC/AC autoexchange, built-in rechargeable battery. Power supports continuously working for more than 50 patients
- 16 pieces of unzipped ECG data and waveforms are stored for copy and re-call
- Inner handhold designed for portability
- ※ EMG Filter; 35Hz (-3dB) / 25Hz (-3dB)
- ※ Paper Speed; 25, 50mm/s  $\pm$  3%
- ※ Recording Paper; 210mm  $\times$  30m, high-speed roll
- ※ Input Circuit Current;  $\leq$  50nA
- ※ Safety Standard; IEC class I, type CF
- ※ Sensitivity; 1/2, 1, 2 (cm/mV)
- ※ Skin Voltage Tolerance;  $\pm$  300mV
- ※ Noise Level; <15 $\mu$ Vp-p
- ※ Weight; 5.1kg

### Standard Accessories:

Patient Cable, Thermal Printing Paper, Limb Electrodes, Chest Electrodes, Power Supply Cable, Grounding Wire

## CONTEC 8000A

### ECG-workstation



- Wilson and Frank modes
- The power module meets the international standard of IEC601-1
- Easy to operate and perfect printout
- Diagnosis of coronary heart disease with 12-lead
- Perfect time domain, frequency domain, and nonlinear HRV analysis
- Perfect ECG database management system

### Feature

- Connected with laptop computer to form a portable ECG workstation
- Patient is completely isolated from computer sets, which absolutely ensure the safety of patients.
- Digital signal, no interference with other devices
- High sampling rate, 1000sampling/sec
- Digital filter system
- The technique of anti-baseline-drift ensures the stability of ECG signal baseline

### Technical parameters

- ECG box (patient isolation and data acquisition)
- 12 Lead ECG cable
- USB interface with PC
- Sample rate: 1000Hz
- Resolution: 12 bit
- Receiver power: 5.0V(DC)
- Lead: 12 lead standard ECG

### Nine functions

12-lead ECG with auto interpretation ,High frequency ECG ,FCG,VLP,VCG,QT dispersion ,TVCG,HRV, Pacing ECG

## CONTEC 8000C/D

### Telemetry ECG (1/3Channel)

CONTEC8000 Telemetry ECG Monitor System consists of three parts, transmitter, receiver and central station. An accurate ECG acquisition system is included in the transmitter, it offers you high quality ECG signals.



### Features

- Adopts synchronized sampling and analyzing technology. Up to eight patients can be monitored.
- Alarm can be triggered by abnormal HR, Pause.
- Advanced data review systems, make you review the entire data at convenience.
- Powerful case management provides you the easy way to search, modify and delete the case.



8000D

### ECG Acquisition

HR range: 30 to 300 bmp  
 Bandwidth: 0.05-40Hz(-3dB)  
 Input impedance:  $\geq 10M \Omega$   
 CMRR:  $\geq 80$  dB  
 Sample rate: 200 samples/second  
 ADC Accuracy: 12 bit  
 ECG gain select: 5,10,20mm/mV

### Power supply

Transmitter: 3.0 VDC, Two 1.5V Alkaline Battery, size AA (R6);  
 Power consumption Approx. 90mW; Operating time:  $\geq 36$  hours (with recommended alkaline batteries)  
 Receiver:5.0 VDC from the USB;  
 Power consumption less than 400mW.

## TLC SERIES HOLTERECG Systems



### Introduction

The TLC series Holter system is composed of the ECG recorders, a computer system, a laser printer and the software. The recorder adopts PCB and SMD technology, build-in flash storage media that increases its memory capacity. The sampling rate of 200, 500, 1000 sampling/sec has improved the quality of waveform.

### Feature

- Quick and accurate analysis system
- Special editing system of R point
- Optional main channel
- Perfect analysis function of ST segment
- The analysis function of T wave of all channels and T wave trend graph
- Review of the ECG trend graph of every time
- The analysis system of HR variability, providing the regular SDNN, SDANN, RMSSD, LF, HF, time domain, and frequency domain
- QT analysis and QT trend graph
- Acquire pacing ECG directly without separate channel, also have the functions of VCG, VRP

### Recorder:

- One of the smallest ECG recorder in the world
- Capacity is up to 1.2G
- Selectable sampling rate, 200, 500, 1000 sampling/sec
- Sampling accuracy : 8, 12 bit
- Build-in FLASH storage media, which can refrain the flash card from damage by repeatedly inserted and pull out
- USB interface



Performance \ Type	TLC9804	TLC2000	TLC4000	TLC5000
Number of channels	4	12	12	18
Number of leads(piece)	7	10	10	16
Lead	Analog	Standard	Standard	Standard
Sampling frequency	10k	10k	10k	10k
Sampling accuracy (bit)	8	8	12	12
HRV time domain	Yes	Yes	Yes	Yes
HRV frequency domain	Yes	Yes	Yes	Yes
HRV nonlinear analysis	Yes	Yes	Yes	Yes
QT analysis	No	Yes	Yes	Yes
QT dispersion analysis	No	Yes	Yes	Yes
Intensified ST segment analysis	No	Yes	Yes	Yes
TWA	No	No	No	Yes
HRT	No	No	Yes	Yes
OSAS	No	No	Yes	Yes
* Pacing analysis	Yes	Yes	Yes	Yes

Note: The items marked with \* are optional parts.

## CONTEC 8000S Wireless Stress ECG Systems

Contec8000S wireless telemetry stress ECG System is an innovative stress testing system. Wireless solution for cardiac stress exercise.

Contec latest 12-lead digital telemetry transmitter is the latest generation of Contec telemetry. It is a compact and extra-slim transmitter with internal antenna and ECG waveform display.

### Windows XP or Vista Operating System

Contec8000S provides a friendly user interface with flexible configurations.

### Complete ST Presentation

In addition to continuous ST trends, the Contec8000S presents ST level and slope for all 12 average complexes and auto-comparison with reference complexes.

### Full disclosure Review Mode

Post-test playback allows full disclosure review of the entire test.

wireless transmitter	1 pc
wireless receiver	1 pc
Contec8000S software	1 set
patient cable	1 pc
USB cable	1 pc
user manual(1 CD)	1 pc
Option: Stress Pulse Oximeter	



## PULSE OXIMETER SERIES

### SPO2:

- Measurement Range:0~100%
- Resolution:1%
- Accuracy:70~100%,  $\pm 2\%$ ;0~69%,unspecified
- Alarm Range:0~100%(merely applied to pulse oximeter with alarm function)

### Pulse rate

- Measurement Range:25~250bpm
- Resolution:1bpm
- Accuracy: $\pm 2$  bpm or  $\pm 2\%$  (select larger)
- Alarm Range:0~254bpm(merely applied to pulse oximeter with alarm function)

Operation of the product is simple and convenient

Small in volume, light in weight and convenient in carrying

High veracity and repetition

The product is suitable for being used in family, hospital, oxygen bar, community healthcare, physical care in sports

High measuring accuracy in the condition of weak filling condition and surrounding light

**CMS 50A****Fingertip oximeter**

- Display Mode: LCD display
- Power Supply: Two 1.5V (AAA size) alkaline battery
- Battery Voltage: DC 2.2V~3.6V
- High accuracy and durability
- SpO2, Pulse Rate, Bar Graph, Pulse Waveform display
- Battery capacity indication
- Automatically power off function
- Screen brightness can be changed

**CMS 50B****Fingertip oximeter**

- Display mode : LCD display
- Power Supply:Two 1.5V (AAA size)alkaline battery
- Battery Voltage: DC2.6V~3.6V
- High accuracy and durability
- SpO2, Pulse Rate, Bar Graph
- Low battery capacity indication
- Automatically power off function

**CMS 50C****Fingertip oximeter**

- Display mode : 65K color OLED display
- Power Supply:Two 1.5V (AAA size)alkaline battery
- Battery Voltage: DC2.6V~3.6V
- High accuracy and durability
- SpO2, Pulse Rate, Bar Graph,Pulse Waveform display
- Battery capacity indication
- Automatically power off function

**CMS 50D****Fingertip oximeter**

- Display mode: Dual-color OLED display(blue and yellow)
- Power Supply:Two 1.5V (AAA size)alkaline battery
- Battery Voltage: DC2.6V~3.6V
- High accuracy and durability
- SpO2, Pulse Rate, Bar Graph,Pulse Waveform display
- Low battery capacity indication
- Automatically power off function
- Six models adjustable by pressing the button shortly
- Four levels adjustable brightness
- Display format can be saved after power off
- Various color of cover can be selected

### CMS 50DL

#### Fingtip oximeter



- Display mode: LED Display
- Power Supply: Two 1.5V (AAA size) alkaline battery
- Battery Voltage: DC2.6V~3.6V
- SpO<sub>2</sub> Pulse Rate, Bar Graph
- Low battery capacity indication
- Automatically power off function
- Various color of cover can be selected

### CMS 50L

#### Fingtip oximeter



- Display mode: LED Display
- Power Supply: Two 1.5V (AAA size) alkaline battery
- Battery Voltage: DC2.6V~3.6V
- High accuracy and durability
- SpO<sub>2</sub>, Pulse Rate, Bar Graph
- Low battery capacity indication
- Automatically power off function

### CMS 50E

#### Fingtip oximeter



- Display Format: True Color OLED With 4 Direction Display
- Pixels: 160\*128, 256K color
- Pulse Wave: Color OLED Graphic Display
- Battery Voltage Indication: Color OLED Graph.
- Compact Size:
- Friendly Operation Menu for The Function Setting.
- Alarm: Visual and Audio
- Alarm Setting: 35-99%

- Pulse sound: Yes
- USB and Wireless interface to Computer
- Synchronous Display on the Oximeter and Computer
- Inner Flash Memory for More than 30 hours Data Storage
- Advanced Software for Sleep Study and Monitoring
- Power Supply: 3.7V Rechargeable Lithium Polymer Battery
- Charger: USB Charger like Apple ipod and AC charger
- Power Consumption: less than 20 mA( Wireless and Alarm not work).
- SPO<sub>2</sub>: 35-99%
- Pulse Ratio: 30-255 BPM
- Resolution: 1% for SPO<sub>2</sub> and 1 BPM for Pulse Ratio.
- Measurement Accuracy: ±2% in stage of 70%-99% for SPO<sub>2</sub>
- Unspecified in stage of 35-69% for SPO<sub>2</sub>
- ±2BPM or ±2%(Select Larger) for Pulse Ratio.
- It is equipped with a function switch, through which the Oximeter can be automatically powered off when no finger is in the Oximeter more than 4 seconds( Not available in Sleep study and Monitoring)

## CMS-50F Wearable Digital Pulse Oximeter



The one to be worn comfortably on the patients wrist for easy spot-check of blood oxygen saturation and pulse rate .

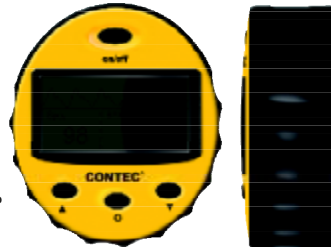
Can be used for monitoring daily activities and overnight sleep studies,The compact design is intended to give the patient greater freedom while improving patient compliance.

- Compact and light weight design,fit comfortably on the patients wrist
- Simply plug in the sensor and out
- For spot checking short and long term monitoring applications
- High accuracy and repetition
- Friendly operation menu for the funcion setting
- 256k color OLED display with 4 directions
- Pulse strength:OLED Graphic display
- Battery Voltage indication:OLED graphic display
- USB interface for computer and advanced softwave for sleep study and monitoring
- Inner flash memory for data storage
- Power supply:3.7V Rechargeable Lithium battery and accharger with USB interface

## CMS-60A Hand-Held Pulse Oximeter

### Technical Parameters

- Display Format: LCD; Back light: LED
- SPO<sub>2</sub>:35-99% ; Pulse Ratio:30-250 BPM
- Pulse Ratio:30-250 BPM; SPO<sub>2</sub> Alarm Range: 0-100%
- Pulse Alarm Range: 15-300 BPM
- Pulse Wave: LCD Graphic Display
- Battery Voltage Low Indication: LCD signals.
- Power: CMS60A:Two AA size 1.5V Alkali Battery;
- Power Consumption: less than 20 mA.
- Resolution: ±1% for SPO<sub>2</sub> and ±1 BPM for Pulse Ratio.
- Measurement Accuracy: ±2% in stage of 70%-99% SPO<sub>2</sub> and meaningless when stage being smaller than 70%. ±2 BPM for Pulse Ratio.
- Measurement Performance in Weak Filling Condition : Oxyhemoglobin and pulse value can be shown correctly when pulse-filling ratio is 0.4%.
- Interference Resistance Capacity against Ambient Light : Deviation is smaller than ±1% between value of Oxyhemoglobin measured in natural lighting indoor condition and present lighting sources and that measured in dark room.
- Option: ECG waveform Display, Heart rate, HR Alarm, SD Card for 24 hours storage,RS232 interface





## CMS 60C

### TFT color Pulse oximeter



#### Specification

- Large TFT color LCD display:160 × 128
- Probe for:adult,Neonate 1.8 " and infant
- Power:1000 mAh L:thum battery,AC charger
- SPO<sub>2</sub>:35% -99% Pulse Ratio:30-250 BPM
- Resolution: ± 1% for SPO<sub>2</sub>, ± 1 BPM for pulse Ratio
- Accuracy: ± 2%(70%-99%),unspecified(35%-70%), ± 2 BPM for Pulse Ratio
- Plethysmogram display,Battery Indicator
- Alarm setting for SPO<sub>2</sub> and Pulse

#### Features

- New look,delicate designed
- Simple operation for fast,easy test
- Superior accuracy and durability
- Shut off automatically
- Wider viewing angle with large color LCD display
- Portable,fashionable,selectable color
- Lower voltage alarm display
- Simple operation,friendly menu interface
- Flash memory with review history data function(option)
- Interference resistance capacity against ambient light
- Can be used in:Hospitals,Emergency services,Pre & Post operation, Transport,Procedure room,Nursing homes,Urgent care,Sleep evaluation, Physician' s office

## CMS 65A

### Pulse Oximeter With Printer

#### Specification

- Large LCD Display:160 × 96,LED Back Light
- Recording Systems:Thermal-array;Paper: Roll 57mm × 25m
- SPO<sub>2</sub>:35% -99% ;Pulse Ratio:30-250 BPM
- Accuracy:SPO<sub>2</sub> ± 2%(70%-99%),Pulse Ratio: ± 2 BPM
- SPO<sub>2</sub> Alarm:0-100%;Pulse Alarm: 30-250BPM
- Plethysmogram display
- Real Time Clock;Battery Indication
- Power:2500 mAh 8.4V L:thium battery AC: adpter:85V-235VV,3A
- Size:190mm × 90mm × 40mm; Weight:800g
- Option:single channel ECG monitor (3 leads), Heart Rate,HR ALarm

#### Features

- Simple operation,friendly menu interface
- AC/DC power supply
- Large LCD display,low battery indicator
- CONTEC pulse oximeter technology
- Compatible with an array of CONTEC sensors
- Portable design,convenient to carry at all times
- Impressive battery life with a quick recharge
- Built-in thermal printer,high printing quality



## PM-60A Pulse oximeter



### Features :

- Routine Check Mode and Continuous Monitoring Mode
- Data Graph and Trend Table Review
- Rich Analysis Report
- Perfect Mount Solution
- Convenient operation by touch screen
- Large SD card memory for more than 2000 patient cases storage
- Sync with PC based Software (WinXP and WinVista)

### Performance Specifications

- Display: 3.5" Color TFT
- Resolution: 320x240
- Display Mode: Standard face, Waveform face, Display Direction adjustable
- Indicator: Power indicator light, Alarm sound, Pulse tone
- Interface: One dual-purpose socket for connecting SPO2 sensors and communication cables
- Power Supply: DC 5V, <300MA
- Battery: Built-in Li-Polymer, 2 hours for charging, 4 hours for continuous working.
- Trend Graph: Resolution from 1s, 5s, 10s. Maximum time 96 hours.
- Trend Table: Resolution from 1s, 5s, 10s. Review up to 2000 items.
- Alarm: Adjustable High and Low limits. Three

level audible and visual alarm

### Technical specifications

- Safety
- Meet the requirement of IEC60601 series
- Type of Protection: Class II with internal electric power supply
- Degree of Protection: BF
- Dimension and Weight
- Dimension: 92(W)x82(H)x22(D)mm
- Weight: 136g(with battery)
- Operation Environment:
- Temperature: 0°C ~ +40°C
- Humidity: 15% ~ 95%
- Storage Environment:
- Temperature: -20°C ~ +60°C
- Humidity: 10% ~ 95%
- Patient Range
- Neonate, Pediatric and Adult

### SPO2

- Measurement Range: 0 ~ 100%
- Resolution: 1%
- Accuracy:  $\pm 2\%$  (70%~100%, Adult/Pediatric)  
 $\pm 3\%$  (70%~100%, Neonate)  
0% ~ 69% unspecified
- Alarm Range: 0% ~ 100%
- Refreshing Rate: 1s
- Pulse Rate:
- Measurement Range: 25 ~ 250 bpm
- Resolution: 1bpm
- Accuracy:  $\pm 2$ bpm or  $\pm 2\%$  (select larger)
- Alarm Range: 25 ~ 250 bpm
- Refreshing Rate: 1s



## PM-80A Pulse Oximeter



### Features:

- Routine Check Mode and Continuous Monitoring Mode.
- Data Graph and Trend Table Review.
- Rich Analysis Report.
- Perfect Mount Solution.
- Convenient operation by touch screen.
- Large SD card memory for more than 2000 patient cases storage.
- Sync with PC based Software (WinXP and WinVista)

### Performance Specifications:

- Display: 2.8" Color TFT.
- Resolution: 240x320.
- Display Mode: Standard face, Waveform face, Display Direction adjustable.
- Indicator: Power indicator light, Alarm sound, Pulse tone
- Interface: One dual-purpose socket for connecting SPO2 sensors and communication cables.
- Power Supply: DC 5V, <300MA.
- Battery: Built-in Li-Polymer, 2 hours for charging, 4 hours for continuous working.
- Trend Graph: Resolution from 1s, 5s, 10s. Maximum time 96 hours.
- Trend Table: Resolution from 1s, 5s, 10s. Review up to 1000 items.
- Alarm: Adjustable High and Low limits. Three level audible and visual alarm.

### Technical specifications:

- Safety
- Meet the requirement of IEC60601 series

- Type of Protection: Class II with internal electric power supply
- Degree of Protection: BF
- Dimension and Weight
- Dimension: 58(W)x108(H)x18(D)mm
- Weight: 130g(with battery)
- Operation Environment:
- Temperature: 0°C ~ +40°C
- Humidity: 15% ~ 95%
- Storage Environment:
- Temperature: -20°C ~ +60°C
- Humidity: 10% ~ 95%
- Patient Range
- Neonate, Pediatric and Adult

### SPO2:

- Measurement Range: 0 ~ 100%
- Resolution: 1%
- Accuracy:  $\pm 2\%$  (70%~100%)  
0% ~ 69% unspecified
- Alarm Range: 0% ~ 100%
- Refreshing Rate: 1s

### Pulse Rate:

- Measurement Range: 10 ~ 270 bpm
- Resolution: 1bpm
- Accuracy:  $\pm 2$ bpm
- Alarm Range: 10 ~ 270bpm
- Refreshing Rate: 1s



## CMS-VE Visual Electronic Stethoscope



### Features

- Portable and convenient to operate
- based on latest piezo sensor technology
- Powerful electronics amplify the sound up to a maximum of 32 times
- 16 steps programmable volume settings
- Sound model: Heart, Lung, Heart and Lung
- Frequency Response: 20Hz - 20,000Hz
- Real-time record and display the heart rate and ECG
- TFT color LCD display (65536 color): 160\*128 pixels
- Accommodates infant, pediatric, and adult patients
- 4.2V Rechargeable Lithium battery
- Automatic switch off after 3 minutes from last button activation
- It can connect an external oximeter probe(Option)
- Pulse Sound.
- Alarm function for SPO<sub>2</sub> and PR.
- Port of charge:USB
- Dimensions:88(L)× 60(W)× 18(H)mm.

## CMS-M Multi-function Stethoscope



### Features

- Integrated with regular stethoscope,ECG waveform display,heart rate and pulse oximeter.
- Large LCD screen display: 160 × 96; LED back light
- RS232 interface connection to computer
- Changeable SPO<sub>2</sub> sensor for different patient ( neonate,infant,enfant and adult)
- Freeze function: convenient to observe the heart rate, ECG and SPO<sub>2</sub>
- Real-time display of the heart rate,ECG and SPO<sub>2</sub>
- Low power consumption, Long life battery
- SPO<sub>2</sub> is option

### Specification

- Weight:200g
- Power:3.6V(Li-ion) ; Current: ≤ 20 MA
- Operation: about 40 hours
- Automatically switch off :The switch will be off automatically in four minutes while no data input
- LCD Display: Pixel 160 × 96
- Display Zone 60 × 34mm
- ECG Waveform Rolling Speed: 6.25mm/s 1.25mm/s 25mm/s
- Sensitivity: Automatic



## CMS SERIES Ambulatory EEG(AEEG System)

In the diagnosis of epilepsy, sometimes there is doubt the nature of the seizure, in which case it is possible to record the EEG over a period of one or more days, using a small portable EEG recorder which the patient wears. Recordings are made whilst the patient carries on normal daytime activities, and during sleep.



### Introduction

The CMS series AEEG system includes EEG recorder, computer system, laser printer, upload device and the analysis system. The recorder adopts advanced PCB and SMD technology, it is one of the smallest recorder in the world. Its memory adopts Intel Strater Flash media. Based on the neuron network theory, the resolution and speed is improved greatly.

### Function

- Windows platform, friendly interface, easy to operate.
- The system integrates acquisition and amplification, filter, A/D resolution with SMD technique, which can adjust sensitivity automatically and enhance anti-jamming ability.
- Take with 24 hours to acquire EEG does not affect daily activity
- Electrode connection mode (monopolar mode\bipolar mode\triangle mode) can be set at will
- The EEG wave is measured automatically and the background and the color of the wave can be adjusted.
- The pathological wave trend graph and review of 24-hour EEG wave available
- Statistic list of all kinds of EEG
- Three-dimensional and regular BEAM
- Perfect case management system
- 8 or 16 channels EEG recording



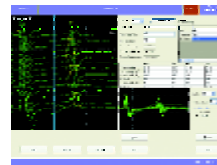
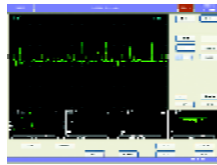
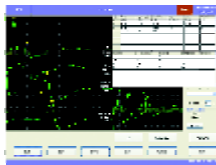
Specification \ Model	CMS2000	CMS4000 multi-parameter
Channels	8	24
Capacity (MB)	128	512
Sampling rate	1k	1k
Sampling accuracy(bit)	10	12
EEG leads	8	16
ECG leads	No	3 leads
Interface	USB1.1	USB2.0
Respiration	No	Yes (option)
EOG	No	Yes (option)
SPO <sub>2</sub>	No	Yes (option)
EMG	No	Yes (option)
Size of Recorder (mm)	90 × 60 × 25	20 × 80 × 35
LAN	Yes	Yes (option)
Internet	No	Yes (option)

## CMS6600 EMG/EP System

PC-based EMG/EP measuring system



- Professional hardware technology. Its performance is credible and steady.
- multi processing unit parallel dispose technology , which makes data collection and graphics display more rapid, CMS 6600 has 4 channels, which satisfies different work modals in the clinic EMG examination .
- Independently programmable stimulators allows sophisticated examinations.
- Professional electromygram operation space, shortcut and steady.
- High speed and completely self-motion data collection and analysis , more nicety and more rapid with electrical stimulus , voice stimulus and light stimulus.

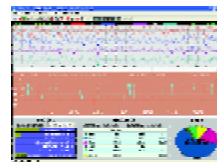
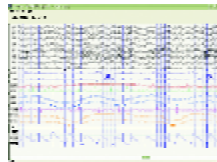


## CMS5500 Polysomnographic System



### Features

- 21 Channels input:
- EEG 8 Ch; EOG 2 Ch; ECG 1 Ch; EMG 1 Ch; Snoring 1 Ch; Respiration 2 Ch; Oral/Nasal Airflow 2 Ch; Leg Movement 1 Ch; Bodyposit 1 Ch; Light 1 Ch; Oximetry 1 Ch
- Internal pulse oximetry
- Combining EEG, Long term Epilepsy, Oximetry and sleep testing procedures
- 100M input impedance
- Compact dimension: 127mm\*82mm\*37mm
- Realtime monitoring and recording or ambulatory recording for 24 hours, Especially convenience for home monitoring
- Perfect database management program
- USB connection
- Windows XP operating system





## CMS100A Electronic colposcope



### features

- High resolution images , SONY imaging system
- Video output: AV/ S-V , connectable with TV and monitor
- Images can be displayed, captured, stored, and printed in real-time display digital magnifying data on the screen
- Step free continuous zoom and focus, electronic green filter removes red from image without light loss
- Newcase can be compared with colposcopic images from existed database
- Capable of databasing for managing patient demographics
- Compose, print clinical report with integrated patient images and relevant annotations and doctor's diagnosis

### Technical parameter:

- ※ pixel:480,000
- ※ Minimum working distance: 100mm
- ※ Focusing: auto/manual
- ※ Lens resolution: 1/4 super color CCD
- ※ Freeze: auto/manual
- ※ Minimum illuminance: 0.2Lux
- ※ white balance: Auto/Manual
- ※ Light source: Multipoint surrounded high-brightness white cold light source

## CMS100B Infrared Galactophore Diagnosis Instrument



CMS100B Series Infrared Galactophore Diagnosis Instrument is designed under the guidance of the theory that different organism absorbing infrared ray differently. Its operating process is:

- (1)Mammary tissue is irradiated under infrared ray;
- (2)Images are captured by a special camera and then processed by computer;
- (3)Mammary diseases will be diagnosed according to the varieties showed on the images has been processed by computer.

### Features,

- High resolution scan and high-quality image capturing technology, with real-time color display
- Two images can be displayed on the screen synchronously for observing two breasts contrastively.
- Images can be stored, reviewed and edited for clinical application.

### Technical parameter:

- ※ Video camera: the lowest shine degree 0.01LUX
- ※ Beam of light diameter:  $\geq 14\text{mm}$
- ※ Probe: maximal intensity of illumination  $1.0 \times 10^5\text{LUX}$
- ※ Light power: 0.2W~35W
- ※ Wavelength:  $0.8 \mu\text{m} \sim 1.5 \mu\text{m}$

## CMS 100C Ultrasonic Medical Image Workstation



### Features:

- It can be connected with any model of Ultrasound equipment.
- Ultrasonic image collection, processing, storage and management.

### Function and Characteristics:

- ※ Friendly interface, convenient to use.
- ※ Function of collecting high-quality dynamic and static images.
- ※ Captured image can be enhanced, circumgyrated, magnified, minified and false colored.
- ※ High capacity storage fuction can realize data review and CD recording.
- ※ Digital dymanic movie replay.
- ※ Data classified function for data searching and printing purpose.

## Electronic endoscope System



### Functions:

- Full screen image with high definition and wide field of view
- High resolution CCD with 440,000 pixels
- Adapt 15V/150W OSRAM halogen lamp and humanized-design to provide optimal operability
- Auto white balance, color adjustment function and adjustable gain of color ensure image of the endoscope is real, Clear and reliable.
- At the same time the endoscope has auto electronic shutter
- Excellent waterproof performance, the whole instrument can be completely immersed into medical liquid in order to be disinfected .
- Multiple image freeze (optional)
- Single image freeze (optional)
- Innovation special instrument trolley

### Standard configuration

- ◇ Electronic Endoscope 1 piece
- ◇ Image Processor 1 piece
- ◇ Cold light source 1 piece
- ◇ Special Monitor 1 piece
- ◇ Special instrument trolley 1 piece



### GE-100 Upper Gastrointestinal Electronic Endoscope

#### Specifications:

Angle of View	120; Straightly
Depth of Field	4-100mm
Outer Diameter of Insertion Tube	Φ 9.8mm
Angle of tip bending	Up 180;Down 90; ,left/Right 100;
Inner Diameter of Biopsy Channel	Φ 2.8mm
Working Length	1050mm

### CE-130 Nether Gastrointestinal Electronic Endoscope

#### Specifications:

Angle of View	120; Straightly
Depth of Field	4-100mm
Outer Diameter of Insertion Tube	Φ 13.8mm
Angle of tip bending	Up 180;Down 180; ,left/Right 160;
Inner Diameter of Biopsy Channel	Φ 3.2mm
Working Length	1330mm

## CMS 3000/3000A High Frequency Surgical Unit



### Functions

- 300W high power output can be used in various surgeries. This generator can be connected with thoracoscope, laparoscope and arthroscope
- The dual patient plate monitoring system can check the connection of patient plate. When the patient plate is not connected properly, audible and visual alarm will be triggered
- Dual-pencil can be used alternatively to improve the cooperation in the surgery
- Auto-check system
- Four modes: pure cut, blend 1 point coagulation bipolar (CMS3000)
- Six modes: pure cut, blend 1, blend 2, point coagulation spray bipolar (CMS3000A)

CMS 3000			CMS 3000A		
MODE	MAXIMUM POWER	LOAD	MODE	MAXIMUM POWER	LOAD
Pure cut	300W	300 Ω	Pure cut	300W	300 Ω
Blend 1	250W	300 Ω	Blend 1	250W	300 Ω
Point coag	120W	300 Ω	Blend 2	200W	300 Ω
Bipolar	50W	100 Ω	Point coag	150W	300 Ω
			Spray	100W	300 Ω
			Bipolar	50W	100 Ω

## SP-750 Infusion Pump

The SP-750 pump is a highly economical volumetric infusion pump, built for safe and easy operation. Highly accurate infusion rates ensure patient safety and optimum therapeutic effect.



### Features:

- Automatic IV-set clamp prevents free flow if pump is opened accidentally
  - Setting that cannot be changed accidentally or by unauthorized personnel
  - ABS (Anti-bolus system)
  - The pressure is reduced automatically after a high pressure alarm is activated
  - Remote monitoring from a nurse's station
- ◆ Accurate fluid delivery
  - ◆ Configurable at bedside via computer
  - ◆ Infusion speed adjustable from 1 to 699ml/h the maximal speed is 900ml/h
  - ◆ Large LCD display
  - ◆ Rechargeable battery
  - ◆ the infusion data for 5 groups of patient can be stored
  - ◆ Download new infusion parameters from IC card for long distance calibration
  - ◆ Operation status clearly indicated by flashing, LED's and large LCD display

**Features**

- Maintenance free oil-less pump
- Overflow protection prevents liquid entering pump.
- Transparent non-toxic PVC hoses and unique connection are easy to observe and link.
- Air filter equipped reduces bacterium in absorbed liquid to environmental pollution.
- Hand-switch and foot-switch installed in parallel can be selected as needed.

**YX930D**

**Electric Suction Apparatus**



**Specification**

- Max Vacuum:  $\geq 0.09\text{Mpa}(680\text{mmHg})$
- Free air flow  $\geq 30\text{L}/\text{min}$
- Liquid storage bottle:  $2500\text{ml} \times 2$
- Vacuum adjustable range:  $0.02-0.09\text{MPa}$  (150-680mmHg)
- Noise level:  $\leq 60\text{dB(A)}$
- Input: 250VA
- Power supply: AC220V  $\pm 10\%$ , 50Hz
- Dimension(L  $\times$  W  $\times$  H):  $320\text{mm} \times 330\text{mm} \times 700\text{mm}$
- Net: 21.5kg

**LX840D**

**Gynecology Aspirator**



**Specification**

- Max Vacuum:  $\geq 0.08\text{MPa}(600\text{mmHg})$
- Free air flow:  $\geq 40\text{L}/\text{min}$
- Liquid storage bottle:  $1500\text{ml} \times 2\text{pc}$
- Vacuum adjustable range:  $0.02 - 0.08\text{Mpa}(150-600\text{mmHg})$
- Noise level:  $\leq 60\text{dB(A)}$
- Input: 250VA
- Power supply: AC 220V  $\pm 10\%$ , 50Hz
- Working system: continuous operation with intermittent loading
- Dimension:  $380\text{mm} \times 350\text{mm} \times 800\text{mm}$

**CMS-BP**

**Automatic Blood Pressure Monitor**

**specification:**

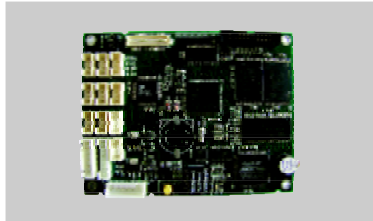
- Display: LCD digital display
- Measurement: Oscillometric method
- Measurement Range: Pressure: 0 to 299 mmHg; Pulse rate: 40 to 180/min
- Accuracy: Pressure: within  $\pm 3\text{mmHg}$ ; Pulse rate: within  $\pm 5\%$  of reading
- Inflation: Automatic inflation with pump
- Deflation: Automatic rapid deflation
- Pressure Detection: Electrostatic capacity semi-conductor pressure sensor
- Power supply: four AAA batteries
- Battery Life: Approximately 300 times of measurement when using alkaline batteries.



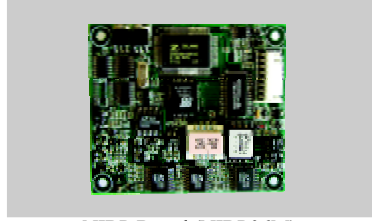
- Electric shock Protection: Internal power supply appliance type B

**Features**

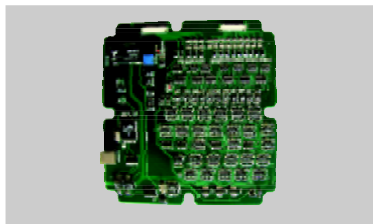
- Clinically proven accuracy
- Fully automatic unit, easy to use
- Compact and delicate design
- Memory recall to help track progress
- AC A dapter and four AAA batteries are included



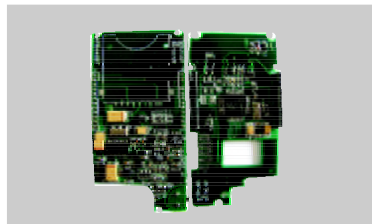
Embedded CPU Board (CP062410)



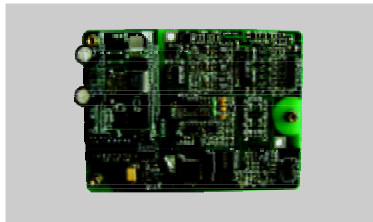
NIBP Board (NIBP06M)



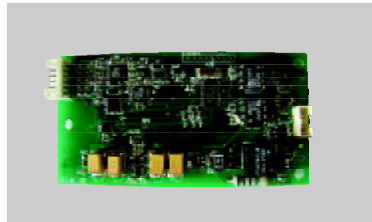
24ch EEG Board (EE0624)



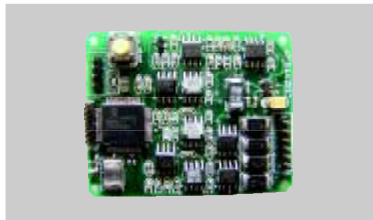
Color TFT Oximeter Board (CT0665)



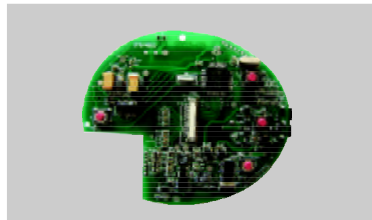
ECG Board (EC0605)



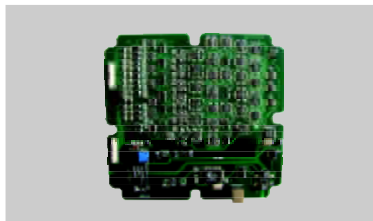
SPO<sub>2</sub> Board (for monitor) (SP061232)



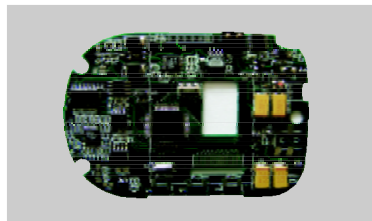
ECG Board (EC0603)



Oximeter Board (OX0660A)



32ch EEG Board (EE0632)



Visual Stethoscope board (VS0601)



## ■ CONTEC MEDICAL INSTRUMENTS

---

---

- |   |   |
|---|---|
| <input type="checkbox"/> B-ULTRASOUND         | <input type="checkbox"/> STETHOSCOPE      |
| <input type="checkbox"/> PATIENT MONITOR      | <input type="checkbox"/> EEG & EEG HOLTER |
| <input type="checkbox"/> FETAL MONITOR        | <input type="checkbox"/> EMG/EP & PSG     |
| <input type="checkbox"/> TRANSCRANIAL DOPPLER | <input type="checkbox"/> ENDOSCOPE        |
| <input type="checkbox"/> ECG                  | <input type="checkbox"/> SURGICAL UNIT    |
| <input type="checkbox"/> ECG HOLTER           | <input type="checkbox"/> MISCELLANEOUS    |
| <input type="checkbox"/> STRESS ECG           | <input type="checkbox"/> MEDICAL IMAGE    |
| <input type="checkbox"/> PULSE OXIMETER       | <input type="checkbox"/> OEM MODULE       |

### **Contec Medical Systems**

**ADD: Hengshan Road #2-1, Qinhuangdao Economic and  
Technical Development Zone, Hebei Province, China**

**TEL:86-335-8015430 8015431 FAX:86-335-8015432**

**<http://www.contecmed.com.cn>**

**[E-mail:cms@contecmed.com.cn](mailto:cms@contecmed.com.cn)**

**Contact Person: Jason Lee**