

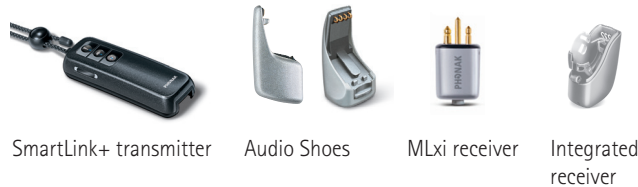
# SmartLink+

## Quick Reference Guide

A pupils radio aid system consists of two parts:

- Transmitter (worn by teacher)
- Receivers (worn by pupil)

For audio shoe advice visit [www.phonak.com/eschooldesk](http://www.phonak.com/eschooldesk)



SmartLink+ transmitter    Audio Shoes    MLxi receiver    Integrated receiver

### Key

- 1 Twin Microphone Ports
- 2 On/Off Et Mic Positions
- 3 Lavalier Adjust Button
- 4 Lavalier Release
- 5 Clip
- 6 LCD Display
- 7 Bluetooth buttons
- 8 SmartLink+ Interface Port

Hearing Instrument Remote Controls (NHS HI's are incompatible)

### SmartLink+ Interface

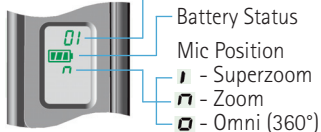
- A Audio in
- B Mic in
- C Charging Port

### On/Off Button



Phonak recommends that you push the Middle "Zoom" button down for 2 seconds to turn off and on for normal teaching.

### LCD Display



### Synchronising

To synchronise a receiver, turn the Easylink+ on, or push the F button, within a 50cm range of the receiver. The receiver should beep to confirm this action.

### Change Channel

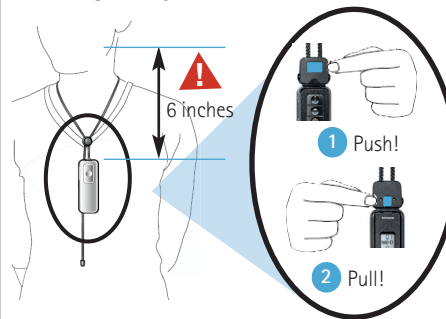
Press the + and F keys together.

The channel indicator in the display starts flashing.

Press + or - to move up/down channels.



### Wearing Et Adjustment



### Microphone Directionality

Smartlink+ has three microphone settings...



#### Superzoom

Narrow beam directionality for, in exceptional circumstances, pointing at sound source, or extremely harsh teaching environments.



#### Zoom (Recommended)

The recommended directional setting for everyday teaching scenarios.



#### Omni-directional

For using in quiet, group discussion situations by placing at the opposite end of the table.

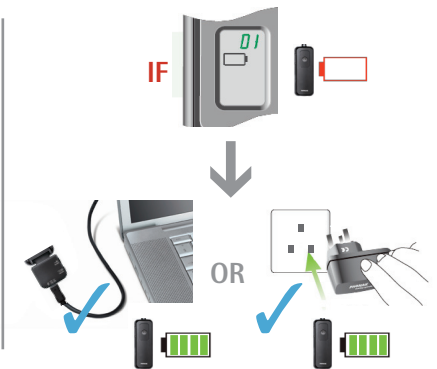
### Audio Input



Standard 3.5mm audio cable

### Charging

SmartLink+ interface should be attached to charge the SmartLink+ or attach external devices.



### SmartLink+ Compatability

Smartlink+ is fully compatible with ALL of Phonak's FM receivers, past and present (examples shown). Simply turn on the transmitter... and **start teaching!**



For more information about your SmartLink+ and how to use other functions please consult the user manual, or visit [www.phonak.com/eschooldesk](http://www.phonak.com/eschooldesk)