



USER'S MANUAL
version 1.1

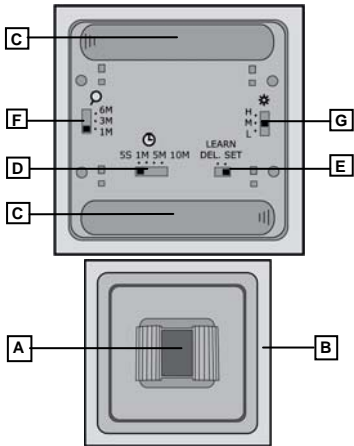
English



AWST-6000 WIRELESS MOTION SENSOR

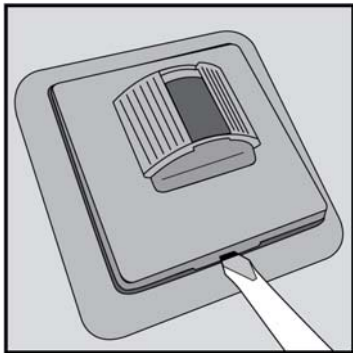


* Picture of the AC-1000
(not included)



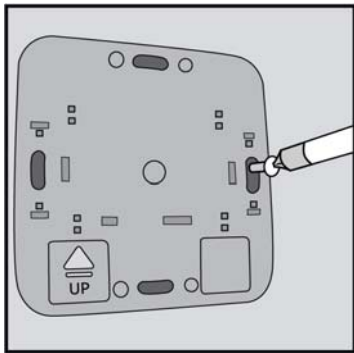
- A: Motion sensor
- B: Removable switch plate
- C: Battery compartment
- D: Time switch "off"

- E: Switch "on" signal
- F: Range switch
- G: Light sensitivity switch



[1] Remove the front with the sensor and the wall plate from the base.

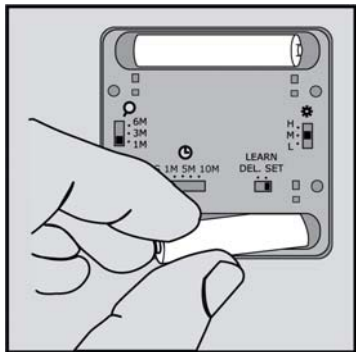
⚠ *If necessary, use a screwdriver to carefully pry off the front. A recess is provided on the underside of the front for this purpose!*



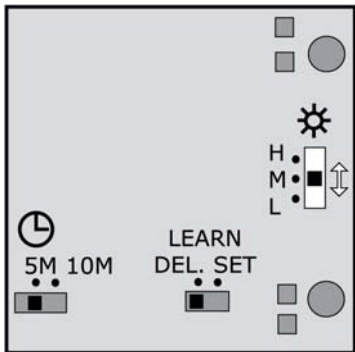
[2] Mount the product in the desired location.

⚠ *The arrow must point up!*

⚠ *Place the product at a height of approx. 1.5 metres (see "Remarks" for the influence of the height on the detection range)!*

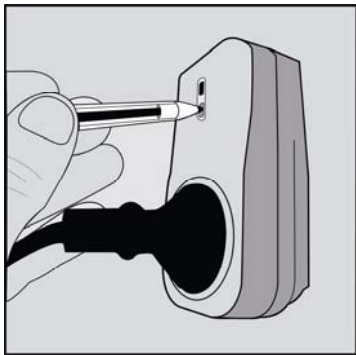


[3] Insert the batteries with the + and – poles facing the correct direction.



[4] Set the light sensitivity switch to “M” or “L”. “M”: Sensor works in areas with little light or in the afternoon (15 to 25 Lux). “L”: Sensor works in dark areas or late in the evening (0 to 15 Lux).

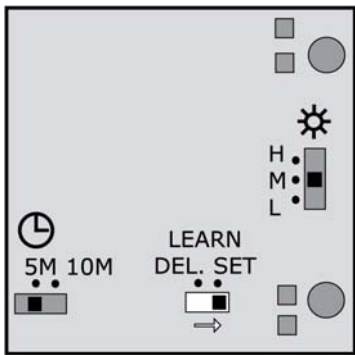
⚠ Set the switch to “H” if this product is used in combination with a receiver of type **doorbell chime!**



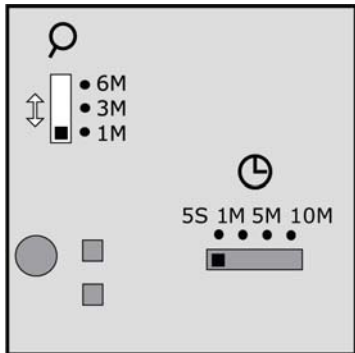
[5] Activate the automatic search mode of the receiver (see the corresponding manual).

This product only works with receivers with a product code that begins with "A"!

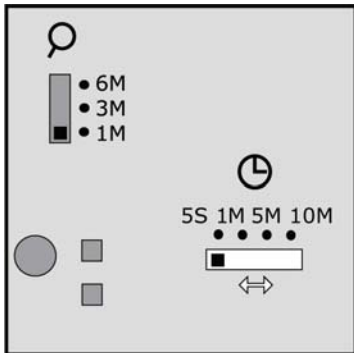
The figure shows the AC-1000 (not included)!



[6] Slide the "LEARN" switch to "SET". To confirm, the receiver switches on and off two times.

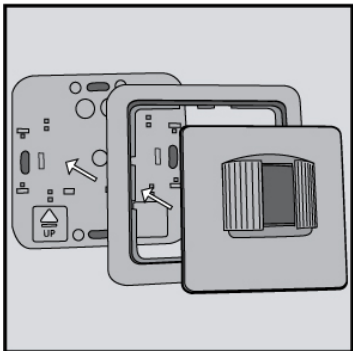


[7] Set the range switch to the desired range (see "Remarks" for more information).



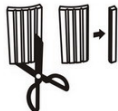
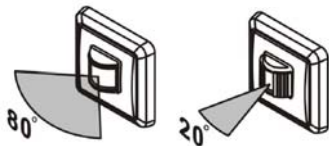
[8] Set the time for switching off. As soon as no more movement is detected, the transmitter will automatically send an "off" signal after 5 seconds, 1 minute, 5 minutes or 10 minutes.

⚠ *The switch time does not work for a receiver of type doorbell chime!*



[9] Place the wall plate back on the base.

⚠ *The front only fits in one direction. The sensor should be slightly above the centre!*

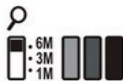
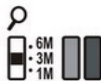
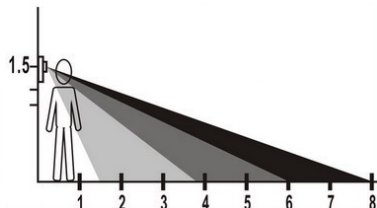
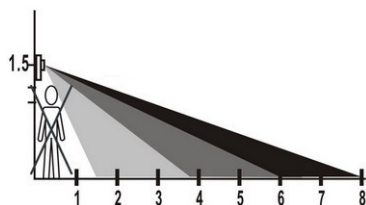
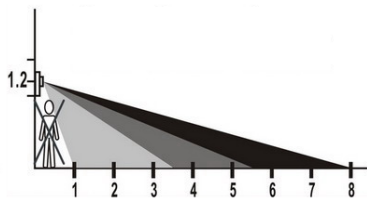
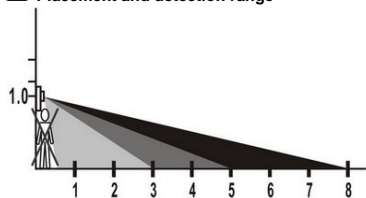


[10] The detection range is maximum 80° and minimum 20°. Remove or reposition the screens to adjust the angle.

⚠ *The sensor screens can be reduced in size if desired!*

Remarks

Placement and detection range



Reminders

- This motion sensor is a transmitter for operation of one COCO receiver independently or multiple receivers simultaneously.
- This product must be used in combination with at least one COCO receiver (not included).
- The wireless system can be expanded indefinitely with other COCO remote controls and/or receivers.
- For all practical purposes, the transmission code is unique (1 out of 67 million) and is pre-programmed at the factory. You cannot change the house code.
- This product can only be used with COCO receivers that automatically program themselves with the transmission code. The type designation of these products always begins with an “A”!
- Consider objects such as trees or bushes within the detection range. When moved by wind or birds, the detector will respond to the unintended motion.
- To prevent interference, avoid placing multiple products close to each other. The minimum distance between units should be approx. 50 cm.
- Deleting the transmitter code from a receiver: Repeat **[5 - 6]**. In step **[6]**, slide the LEARN button to “DEL” (to confirm, the receiver switches on and off two times).
- If the product does not work:
 - Check the correct placement and/or function of the batteries (replace if necessary).
 - Check step for step whether this product and the receiver are configured properly.

Safety instructions

- Never use COCO products for life support systems or other applications in which equipment malfunctions can have life-threatening consequences.
- Do not expose this product to excessive heat, direct sunlight or moisture.
- Remove the battery from this product if it will not be used for an extended period.
- Do not attempt to repair this product. If the product is damaged or if you are in doubt about the proper operation, take the product back to the place of purchase.
- Do not use the product in damp areas. Clean the device with a clean cloth.

 **Power**

- When some time has passed, if a receiver no longer responds when the product is used, replace the batteries.
- Use only 1.5 Volt AAA alkaline batteries.
- Do not throw the battery into an open fire.
- Respect the local regulations when disposing of batteries.

 **Wireless**

- This product works using a radio signal that passes through walls, windows and doors. The range is maximum 75 metres in the open air. The range indoors is strongly influenced by local conditions such as concrete, glass and metals. On average, the indoor range is approximately 30 metres.
- New double glass often includes a thin metallic layer. This type of glazing ("**HR glass**") allows most visible light to pass through but has a negative impact on radio signals. If there is HR glass between the transmitter and receiver, you should expect a significant reduction of the range of the wireless signal.
- This product operates at a frequency of 433.92 MHz. It complies with the essential requirements and other conditions of R&TTE Directive 1999/5/EC and can be used in all EU countries.
- There may be restrictions on the use of this device outside the EU. If this device is used outside the EU, check whether the device complies with the local directives.



This product complies with the essential requirements and other relevant provisions of the applicable European directives. The Declaration of Conformity (DoC) is available at www.coco-technology.com.



If possible, submit this product for recycling after use. Do not dispose of the product with household trash.

**Warranty and copyright**

This device is covered by a two-year warranty that begins on the day of purchase. Visit www.coco-technology.com/warranty for additional information. Reprinting of (portions of) this manual without permission from Pan-Trade International B.V. is expressly prohibited.



PAN-TRADE INTERNATIONAL B.V.

P.O. BOX 126
4760 AC ZEVENBERGEN
THE NETHERLANDS
www.coco-technology.com



Declaration of Conformity

Pan-Trade International BV declares that the COCO product, model:

type designation	AWST-6000 WIRELESS MOTION SENSOR
item number	74013

is in compliance with the essential requirements and other relevant provisions of directives R&TTE 1999/5/EC, EMC 2004/108/EC and LVD 2006/95/EC and is compatible with the standards EN 300 220-1/3, EN 55015, EN 301 489-1/3 and EN 60950.

Manufacturer / Authorised representative,



M.A. Hoekstra, managing director
Zevenbergen, 2008-01-30