

Otto-Driving Companion® Device Personalization, and Configuration

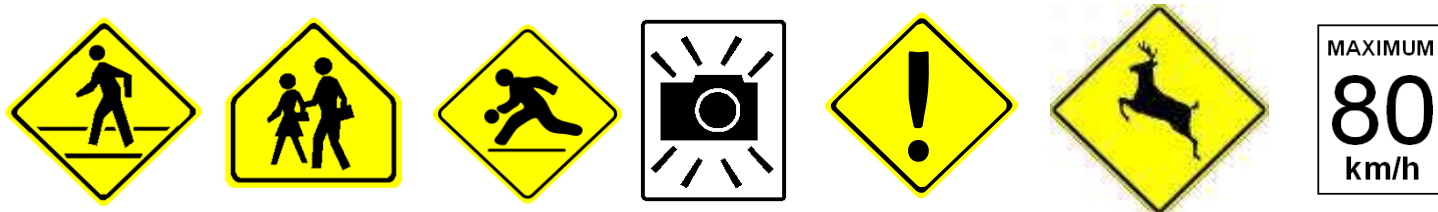
meet **Otto**



© PERSENTECH 2011

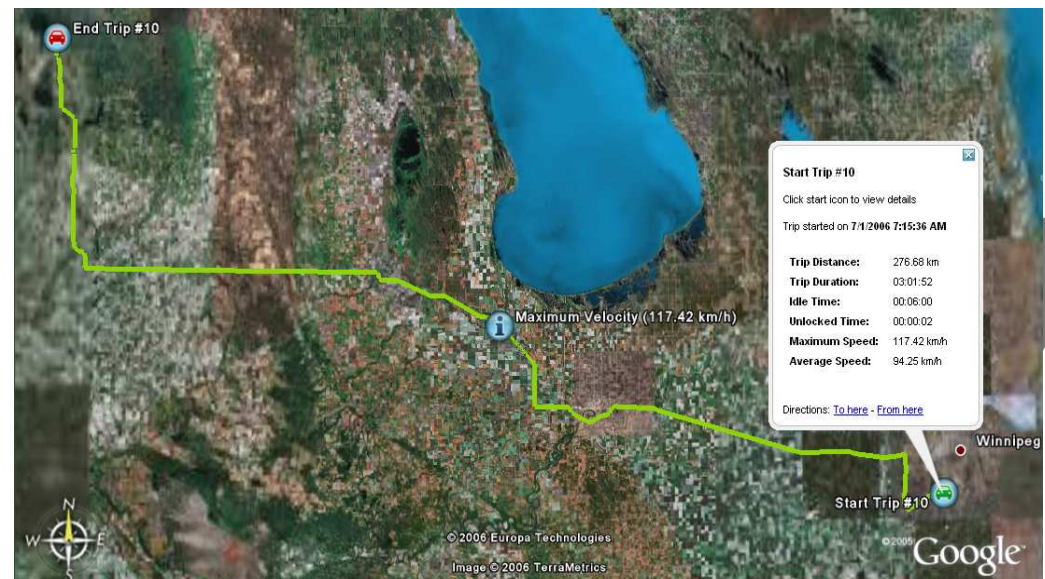
meetOtto

- A Portable GPS device the size of a pocket calculator
 - Integrated antenna to receive GPS signals
 - Integrated digital map (no LCD screen display of map)
 - Integrated speaker and four colored lights
- Otto's intelligence
 - Knows Posted Speed Limits
 - Knows your community
 - Crosswalks, School Zones, Playgrounds, Red Light Camera Intersections, Hazardous Intersections, Deer Crossings



meet Otto

- Otto knows:
 - Where you are and how fast you are going
- Otto tells you:
 - When you are exceeding the posted speed limit
 - When you are approaching a designated safety zone
- Otto data logger:
 - Records where you drove and how fast you were going



What's included in the package?

- Otto-Driving Companion Device
- USB Cable
- Cigarette Lighter/Accessory socket Power Adapter
- Jelly Sticky Pad for dash mounting
- Velcro strips for dash mounting
- Instruction manual
- One-year map updates and website access for firmware updates, new features, device personalization and data log processing



Connecting the Device in the Car

- Step 1: Choose a Power Source
 - Two AA batteries or 12V power adapter with cable
- Step 2: Use the supplied Jelly Pad and/or Velcro Strips to mount Otto in-and-around vehicle dash board area to allow unit to “see” the sky
 - Otto has a built-in satellite antenna and will operate best if placed at the front of your vehicle
- Step 3: Power-on Otto by pressing the middle button for at least 2 seconds



Otto Operation

- As Otto turns on, it will play a short melody and the green light will blink on and off until it acquires the satellite signal
- Otto will be ready when the green light stops blinking
 - If you are outdoors with a clear view of the sky, this process will take approximately 45 seconds and as long as 3 minutes if the device is powered on the first time or after being off for more than 8 hours (called a “cold start”)
 - If you only have a partial view of the sky (for example, you are standing beside a tall building), this process may take longer.
 - If you do not have a clear view of the sky (for example, you are inside a building), the device may not acquire a satellite signal and the green light will continue to blink
- Due to the positioning “fix” required for accuracy, this is a GO or No GO type feedback to the user
 - i.e. Either the device has a “fix” on your position or it does not have a “fix” on your position

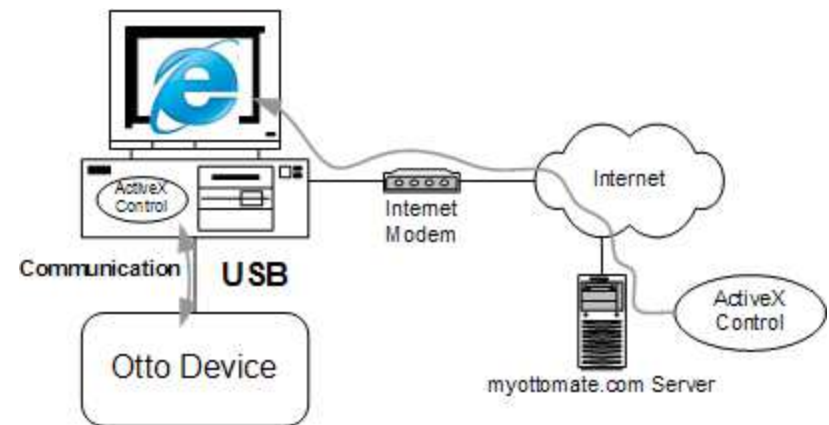
Connecting Otto to your PC

- Configuring Otto using the Website
 - Use your PC to connect to the Internet to configure Otto's settings, receive the latest map updates, download new maps, and upload your OttoLog™ data files to view trip information and to render the trips on GoogleEarth®
- Configuring Otto using the Otto Configuration Software
 - You can also use the Otto Configuration Software (downloaded from the website or installed from the accompanying CDROM) instead of the website to configure your Otto device and to upload your data log files from the device
 - You will still require an Internet connection to view the log files on GoogleEarth®



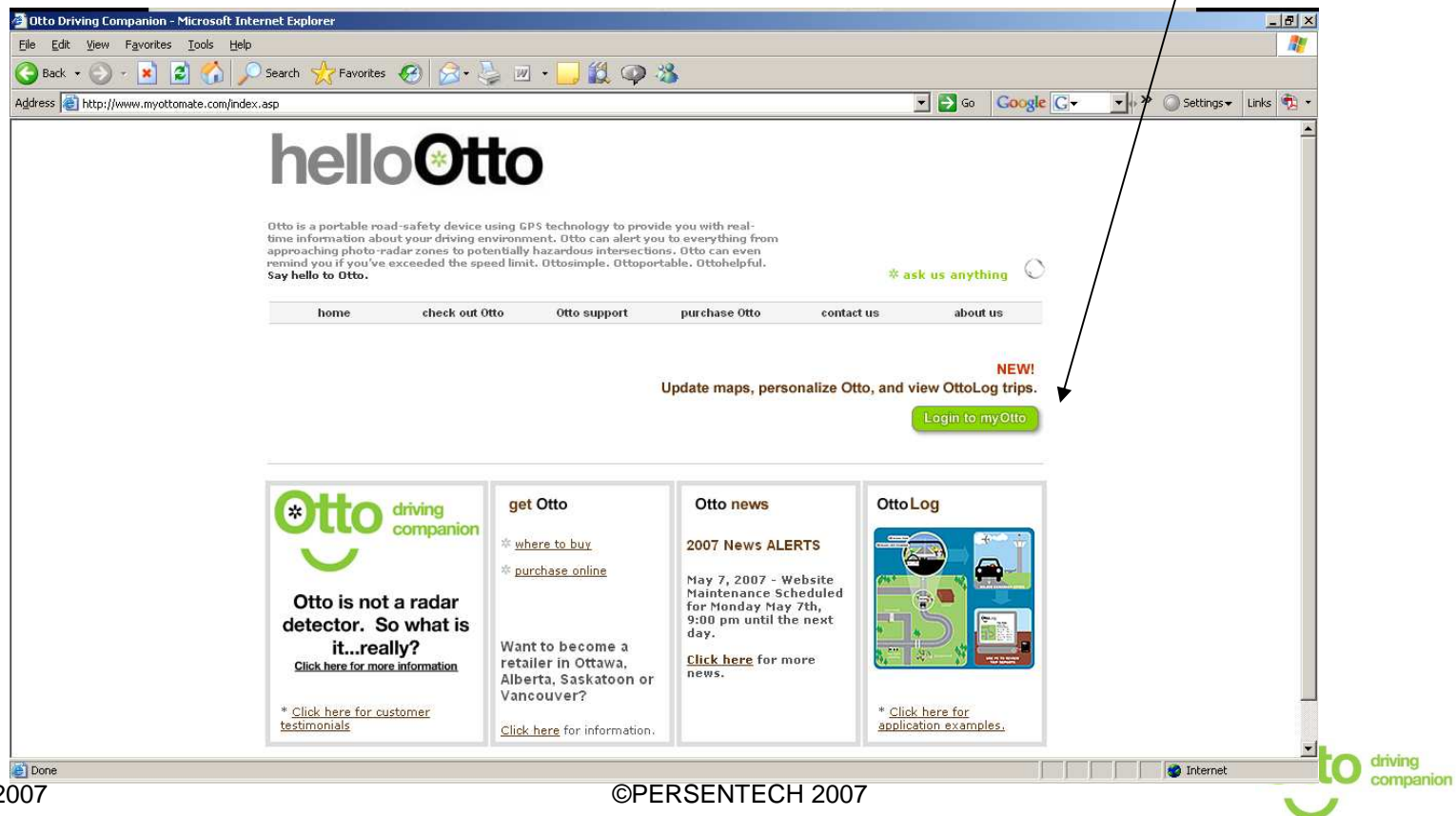
Using your Microsoft Internet Explorer® (IE) Web Browser

- You must use the Microsoft Internet Explorer® Application Software that comes with your PC
 - Netscape, Firefox or other Internet browser applications will not work as they will not support the ActiveX®
 - An ActiveX® control will be downloaded to your PC's Internet Explorer® when you click on the Login to my Otto button
 - You should see the screens shown on the following slides on your PC desktop as you launch your IE web browser to allow for the ActiveX® element to be configured on your PC



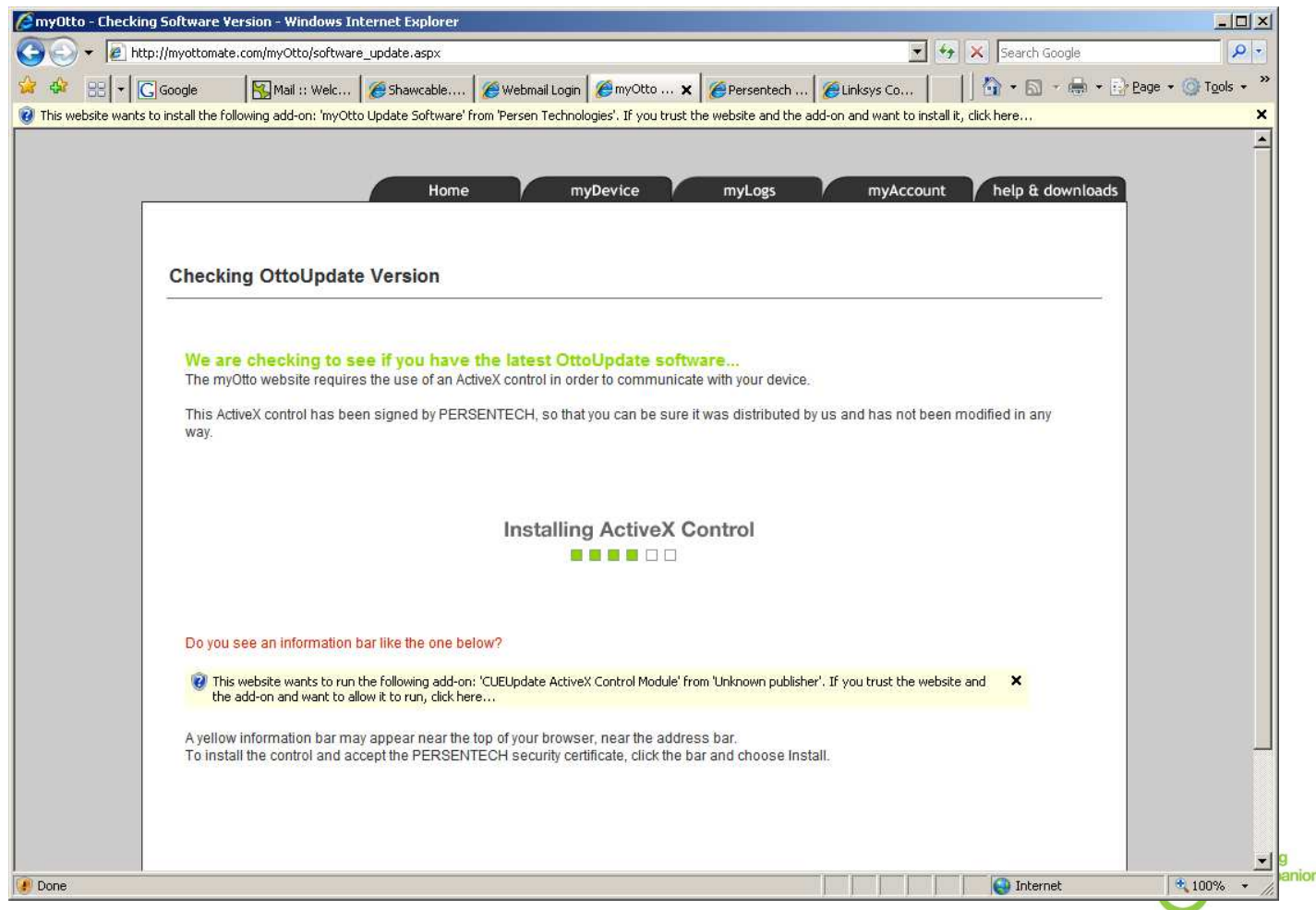
Using the Website (1)

- Go to <http://www.myottomate.com> and click on the Login to my Otto button



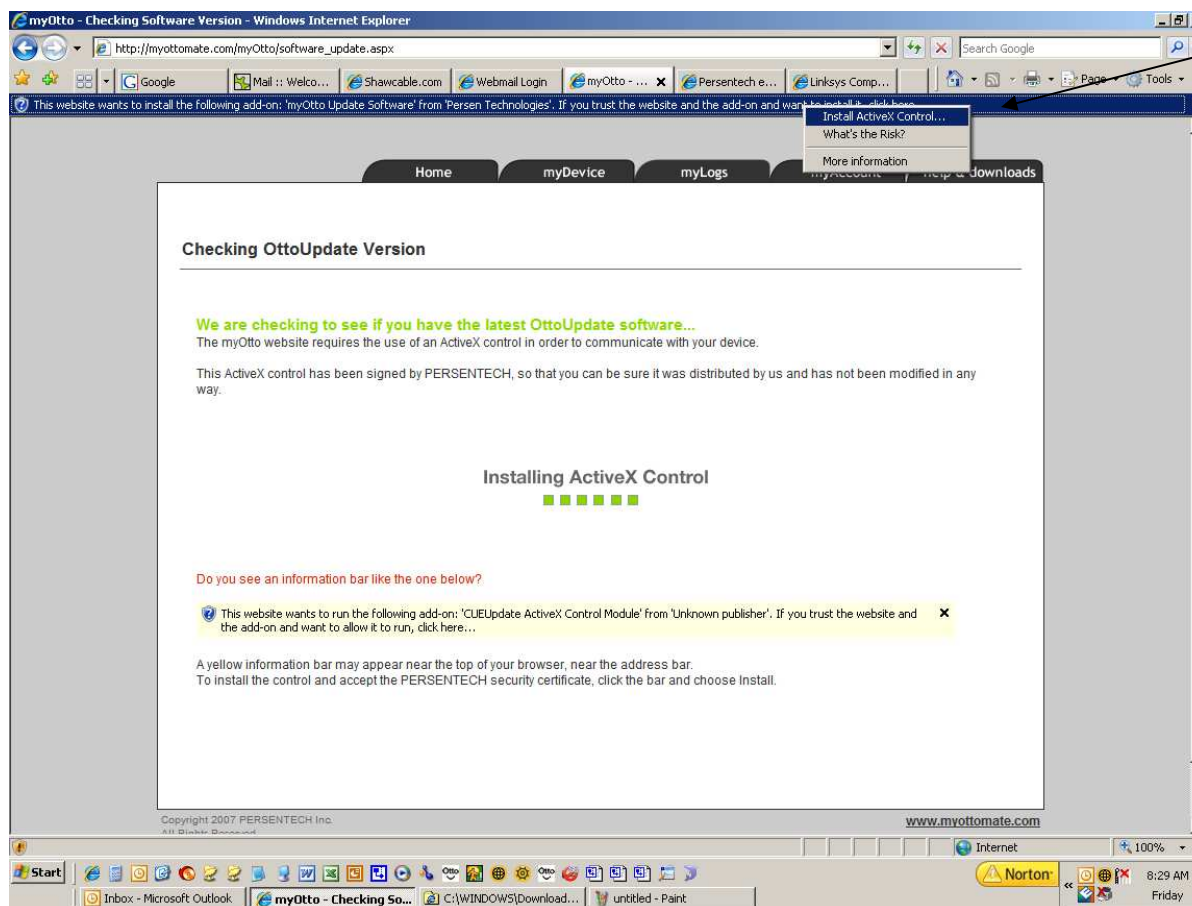
Using the Website (2)

- You will see the following screen the first time you connect to the Website with your Otto connected to the PC



Using the Website (2)

- Click on the highlighted bar at the top of your IE application and select “Install ActiveX Control”

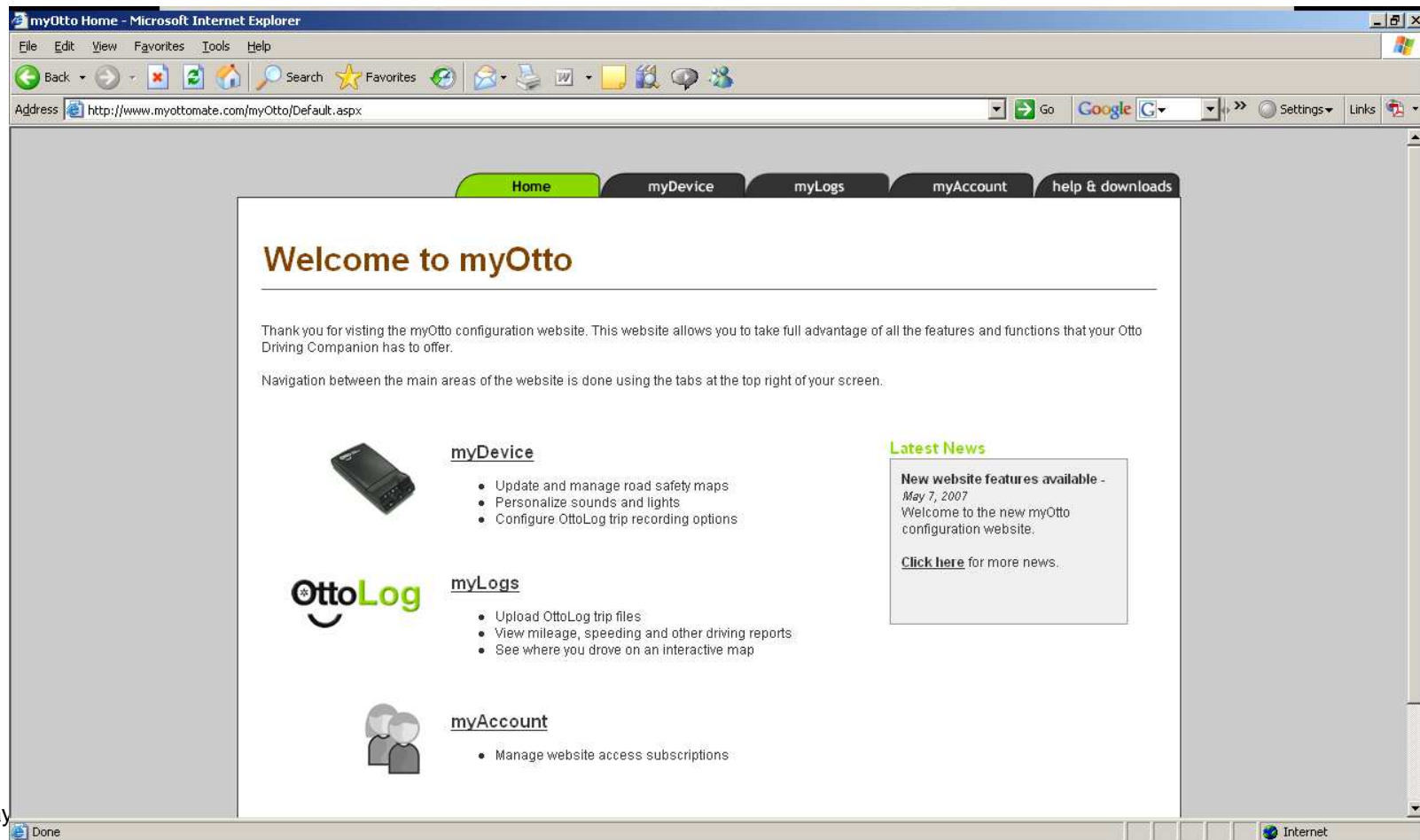


Using the Website (3)

- The time it takes to download the ActiveX® control file will depend on your Internet connection speed
 - The file is approximately 600 kBytes in size
- After the IE application downloads the file, the Otto driving companion will be recognized and the IE application will be communicating with Otto to allow you to configure it, download maps and upload your data log files
- You should see the desktop screen shown on the next page after Otto becomes operational through to the website

Using the Website (4)

- When you see this screen, you can proceed to configure, download maps and manage your OttoLog data files
- If you are having difficulty in downloading the ActiveX® control, go to the Appendix in this presentation to verify your Internet Explorer browser application settings



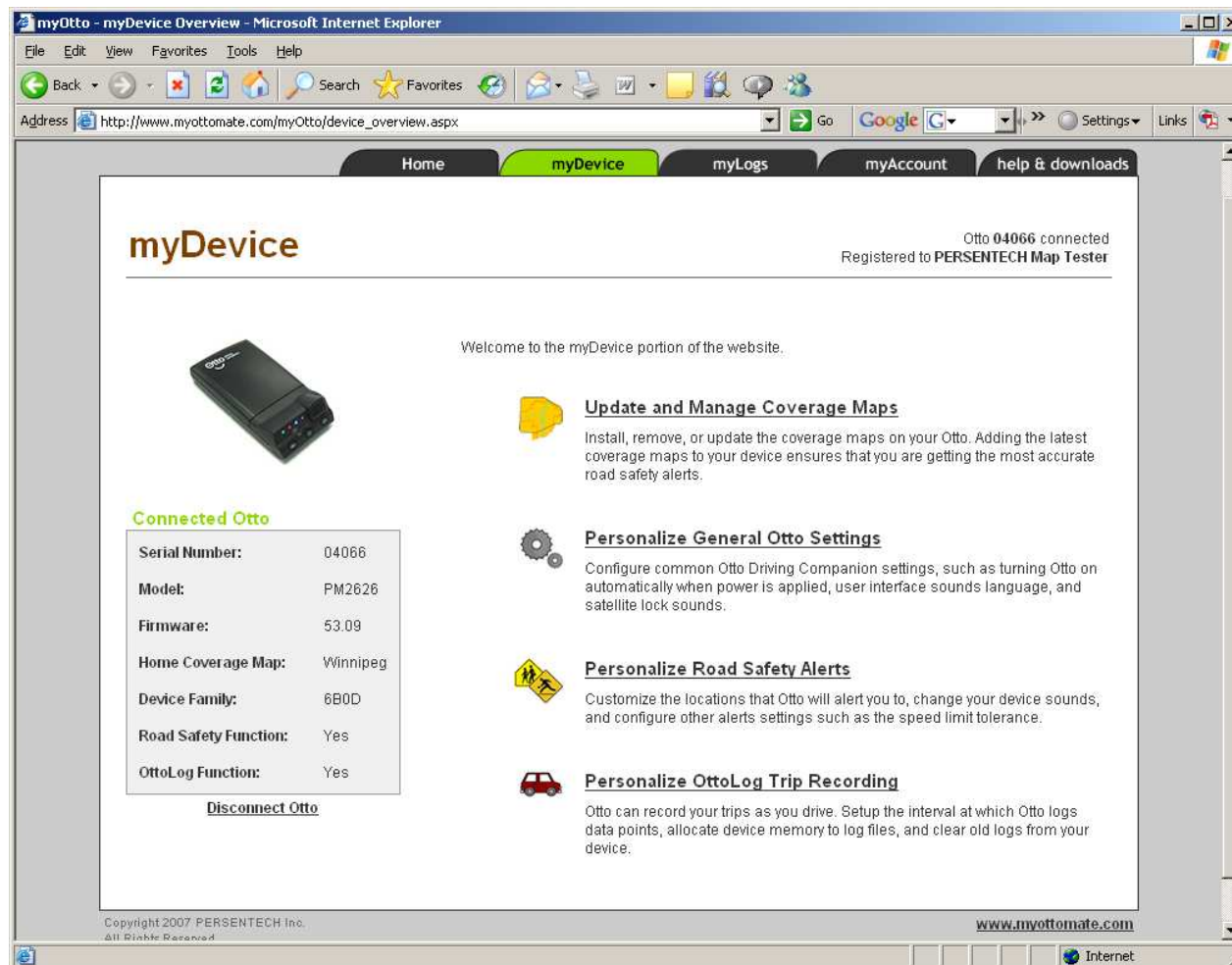
myDevice (1)

- Click on the “myDevice” tab
 - At this point, the IE browser application with the ActiveX® control will begin to communicate with your Otto device
 - You will initially see a small green bar scrolling along as the program recognizes the connected Otto device and then presents you with your myOtto home page
 - This page, shown on the next slide, contains information about your device that can be used for customer support and system verification



myDevice (2)

- Click on “Update and Manage Coverage Map” to add/remove or update your maps
- The screen on the following page shows you a sample of the coverage maps that are loaded on your device



Update and Manage Coverage Maps

myOtto - myDevice Coverage Maps - Microsoft Internet Explorer

File Edit View Favorites Tools Help

Address http://www.myottomate.com/myOtto/device_coveragemaps.aspx

Home myDevice myLogs myAccount help & downloads

Update and Manage Coverage Maps

Otto 04066 connected
Registered to PERSENTECH Map Tester

[return to myDevice](#)

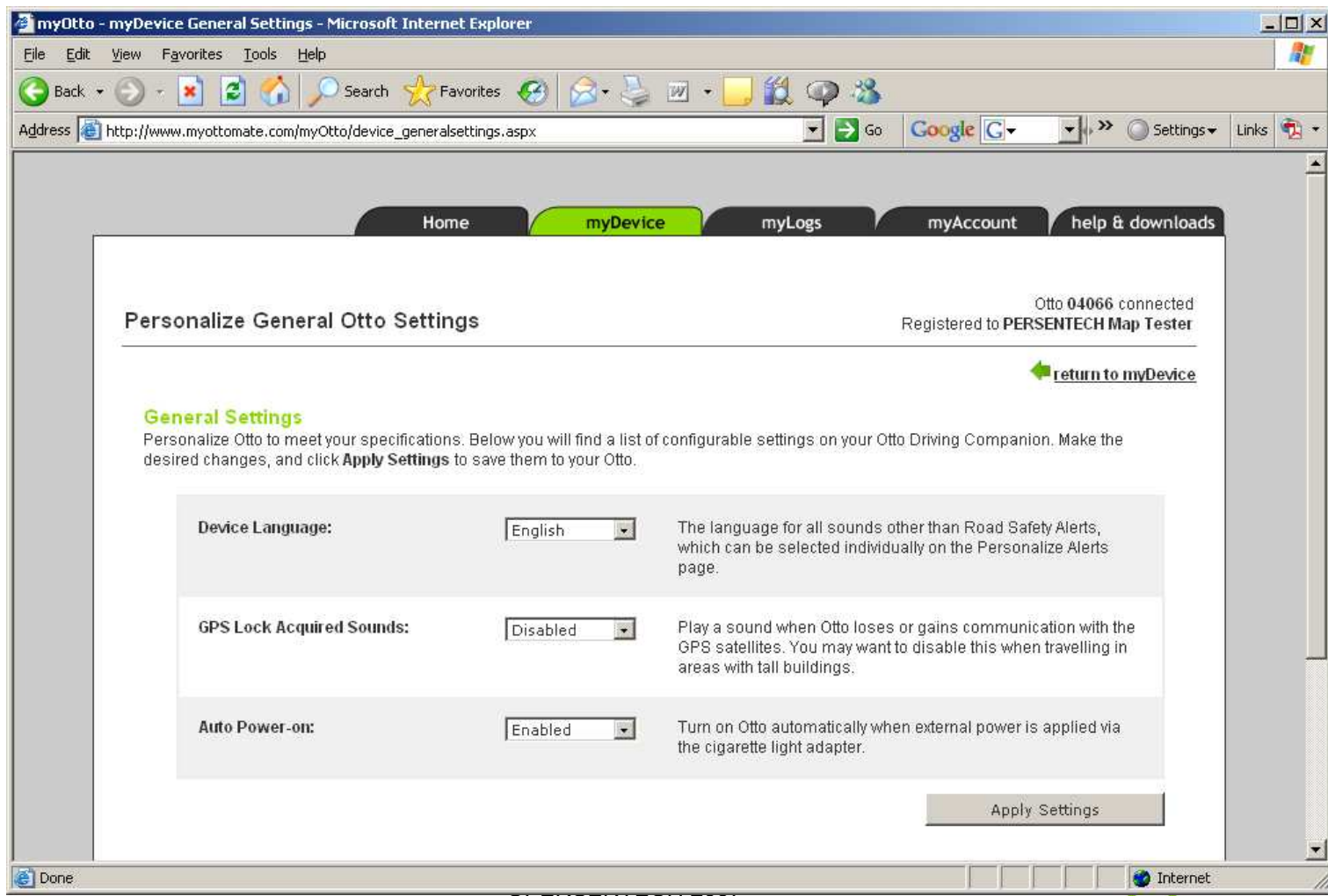
Installed Coverage Maps
The following coverage maps are installed on your Otto. To delete a map from your device, click **Remove Map**. If there are updates available for your maps, it will be indicated below.

Winnipeg		Installed version: 03.36	Remove Map
Ottawa		Installed version: 03.07	Remove Map
Calgary		Installed version: 03.15	Remove Map
Edmonton		Installed version: 03.07	Remove Map
Red Deer		Installed version: 03.05	Remove Map

Done Internet

Personalize General Otto Settings

- Click on “Personalize General Otto Settings” to configure Otto’s basic settings



“Personalize Road Safety Alerts”

- Click on “Personalize Road Safety Alerts” to configure the speed limit notification settings and the Road Safety Alert Settings
- The details for each of these settings is described with the setting, in the user manual and user manual addendum, and in the Otto Configuration Software User Manual
- Remember to select the “APPLY SETTINGS” button at the bottom of the main screen after you make changes




Personalize Road Safety Alerts

Customize the locations that Otto will alert you to, change your device sounds, and configure other alerts settings such as the speed limit tolerance.

“Speed Limit Notification Changes”

Personalize Road Safety Alerts

Otto 04066 connected
Registered to PERSENTECH Map Tester

 [return to myDevice](#)

Speed Limit Notification Settings

Configure the way that Otto alerts you when you exceed the speed limit.

Speed Limit Trigger:	<input type="text" value="10 %"/>	If the "speed limit exceeded" notification is enabled, play it when over the speed limit by this percentage. Choose Custom to set the tolerance for each speed zone individually.
Speed Change Notification:	<input type="text" value="Enabled"/>	Speak the current speed limit when the limit on the road you are travelling changes to a lower one.
Default Speeding Notification:	<input type="text" value="115 km/h"/>	When you are outside the coverage area of your installed maps, you will be notified when your speed exceeds this fixed value. This can typically be set to the highway speed limit in your area.

“Road Safety Alert Settings”

myOtto - myDevice Road Safety Settings - Microsoft Internet Explorer

Address: http://www.myottodate.com/myOtto/device_personalize.aspx

☒ I want Otto to alert me when I exceed the Speed Limit

Turn on this light: Blue
Play this sound: Loud siren
Play sound a total of: 1 time
Pre-announcement chime: Disabled

☒ I want Otto to alert me when I approach a Crosswalk

Turn on this light: Yellow
Play this sound: Beam me up
Play sound a total of: 2 times
Pre-announcement chime: Disabled

☒ I want Otto to alert me when I approach a Hazardous Intersection

Turn on this light: Yellow
Play this sound: Foghorn
Play sound a total of: 1 time
Pre-announcement chime: Disabled

☒ I want Otto to alert me when I approach a Red Light Camera

Turn on this light: Red
Play this sound: Firetruck horn
Play sound a total of: 2 times
Pre-announcement chime: Disabled

☒ I want Otto to alert me when I approach a School Zone

Turn on this light: Yellow
Play this sound: Fembot voice 1 - Danger
Play sound a total of: 3 times
Pre-announcement chime: Disabled

☒ I want Otto to alert me when I approach a Playground

Turn on this light: Yellow
Play this sound: Cyborg Voice 1 - Alert
Play sound a total of: 3 times
Pre-announcement chime: Disabled

☒ I want Otto to alert me when I approach a Deer Crossing

Turn on this light: Yellow
Play this sound: Musical query
Play sound a total of: 2 times
Pre-announcement chime: Disabled

“Personalize OttoLog Trip Recording”

- The model PM2626 supports data logging in addition to the road safety alerts
- Click on the “Personalize OttoLog Trip Recording” icon to begin configuring your device



Personalize OttoLog Trip Recording

Otto can record your trips as you drive. Setup the interval at which Otto logs data points, allocate device memory to log files, and clear old logs from your device.

“Personalize Log File”

- This screen indicates the log file size and time remaining in the log for the given sampling interval
- You would click on the “Clear Logging Memory” button to reset your memory space to the initial state
 - When you do this, you will clear out/delete all previous data and trips on the device, so make sure you save the log files before you clear the logging memory

Personalize OttoLog Trip Recording

Otto 04066 connected
Registered to **PERSENTECH** Map Tester

 [return to myDevice](#)

Current Log File

Below you will find detailed information regarding the log file that currently resides on your Otto, including an estimate on how much logging time remains based on your current logging interval. To clear the log from your device or change how much space is allocated, click **Clear / Allocate Logging Memory**.

Allocated Log Size:	3670016 bytes
Used Log Size:	205933 bytes
Percent Used:	<div><div></div></div> 94% remaining
Time Remaining:	300.70 hours (at 1 second intervals)

Clear Logging Memory...

“Logging Configuration”

- Two settings to configure when Otto should stop recording data if the vehicle is idle (i.e. parked or stopped for a long period of time) and how often to record trip samples
 - Once per second is the default setting that provides the greatest resolution in data

Logging Configuration

Configure how Otto logs your information as you drive. To apply the settings to your device, click **Apply Settings**.

Pause Logging When Inactive:	<input type="text" value="5 minutes"/>	Pause logging when the vehicle has not moved for this amount of time. This conserves logging space when the car is parked.
Logging Interval:	<input type="text" value="1 second"/>	Specify at what interval Otto logs a new data point. Higher intervals allow Otto to log for a longer period of time, but the resolution of the map trace decreases as a result. Acceleration statistics can only be viewed on logs with a logging interval less than 5 seconds.

Apply Settings

“Security Settings”

- Configure the security settings for your data logs according to your needs:
 - High, Medium and Easy access are available

Security Settings

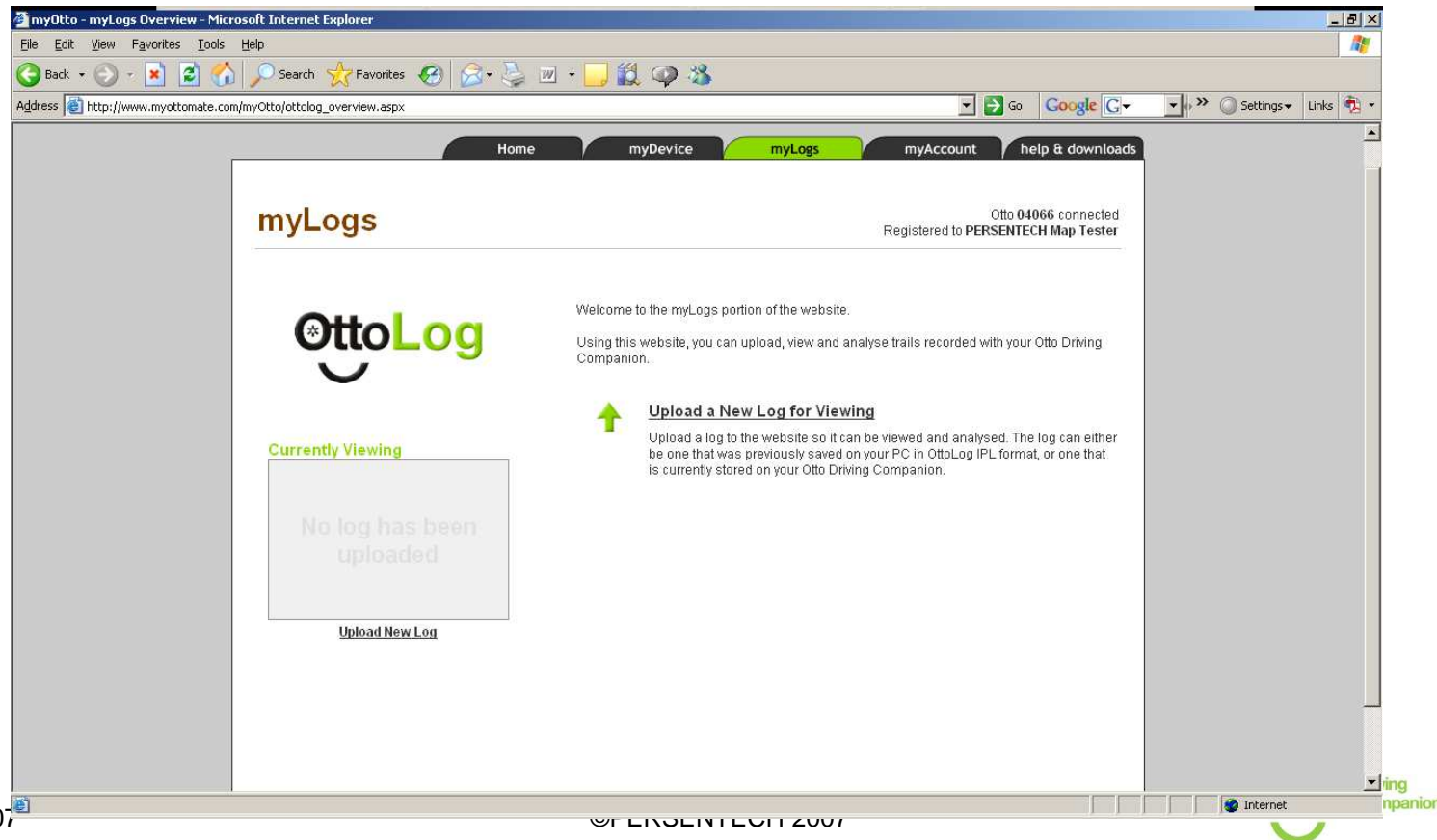
Change the security setting on your Otto. To change the level or your PIN number, click **Change Security Level/PIN**.

Security Level:	Easy Access	The logging security level, which can be one of the following: Easy Access - recorded logs can be viewed by anyone. Medium Security - the Otto that the log was recorded with must be attached to the computer in order to view the log. High Security - additionally, a four-digit PIN number (that you specify) must be entered to both view log files and to clear the memory on the device.
------------------------	-------------	---

Change Security/PIN...

“myLogs”

- Return to the main screen and click on “myLogs” to access the data logs resident on your Otto device
- Click on “Upload a New Log for Viewing”



“Upload a New Log for Viewing”

- You can choose whether to upload a log directly from your Otto device, or you can upload a previously saved data log that is resident on your PC

Upload New Log for Viewing


Otto 04066 connected
Registered to PERSENTECH Map Tester

[← return to myLogs](#)

In order to view and analyse logs recorded with your Otto, you must first upload it to our servers.

Your file will be automatically deleted when you upload a new log, or when you logout from the website. When you upload a log from your connected Otto device, you can also save the log to your hard drive on your PC for future viewing.


Upload a log from my PC



1. Click Upload Log from PC.
2. A window will appear asking you to choose a file. Click Browse to choose the log file (*.ipl) from your PC.
3. Click Continue to upload the log to the website.

Upload Log from PC

Upload a log from my Otto Driving Companion



1. Ensure Otto 04066 is still connected to your computer.
2. Click Upload Log from Otto to read the logfile from your device and upload it to the website.

Upload Log from Otto

“Upload Log from my Otto”

- Click on the “Upload Log from Otto” button
 - Ensure that the Otto device is connected to the PC through the USB port
- You will see a window on the screen that allows you to upload the log file and save it to your PC for future use
 - If you do not want to save the log file to the PC, simply click on the “CONTINUE” button
 - If you do want to save the log file to the PC, click on the “Browse” button and select the folder where you would like to save the log file, i.e. OTTO-LOGFILES, and then select a name for your Log file, i.e. Otto-4066-May20-07.ipl
- Once the logfile is uploaded and saved to your PC, it will then be uploaded to the external server for processing
 - Click “Finish” after you are prompted that the Log file was uploaded successfully



“Upload Log from PC”

- When you select “Upload Log from PC”, you will see a browser window open
 - Browse to the folder on your PC where you have previously saved your Log files and select the file you would like to open
 - The log files will have a format:
 - Filename.ipl



“Upload Log File”

- Once you have selected the file to upload, the web browser application will upload the file to the server for you and you will then have access to the trip information and the various trip reporting options
 - This includes trip reports in PDF format
 - Exporting trip information to other applications
 - Uploading the trip information to “GoogleEarth 3D®)
- Click “Finish” and you will see the screen shown on the following slide when the data upload has been completed




myLogs with Trip Information

[Home](#) [myDevice](#) [myLogs](#) [myAccount](#) [help & downloads](#)

myLogs

Otto 04066 connected
Registered to PERSENTECH Map Tester




Currently Viewing

Filename:	Otto1005-May17-07.ipl
Recorded with Otto:	01005
Trips:	74
Distance (km):	312.04
Duration (h:m:s):	09:12:26
Data Points:	32260

[Upload New Log](#)


Welcome to the myLogs portion of the website.

Using this website, you can upload, view and analyse trails recorded with your Otto Driving Companion.




View Reports Generated from My Log

Choose this option to view reports generated from the log you have uploaded.




View Where I Drove on a Map

Choose this option to see where you drove on a 3D map using Google Earth.



Export Log in Another Format

Your log can be exported and saved to a number of different formats so that it can be viewed and processed in third party applications.



Upload a New Log for Viewing

Upload a log to the website so it can be viewed and analysed. The log can either be one that was previously saved on your PC in OttoLog IPL format, or one that is currently stored on your Otto Driving Companion.

Viewing Reports from myLog

- The main screen identifies the filename of the data log currently uploaded, the Serial Number of the Otto that recorded the data, the number of trips in the file, the total distance (in km) driven, and the total time duration recorded
 - Note that a trip start and trip stop are defined as follows:
 - Trip Start or Stop: When the Otto device has been power-cycled – powered on = Start Trip, powered off = Stop Trip
 - Trip Stop: When the Otto senses a stop (no change in position or velocity) after the value in minutes set in the OttoLog Configuration panel → setting the value to pause logging after a certain number of minutes
 - Trip Start: When Otto is still on, and has paused logging after the number of minutes set in the OttoLog configuration, Otto will start logging again once it senses a change in position and a change in velocity

Currently Viewing

Filename:	Otto1005-May17-07.ipi
Recorded with Otto:	01005
Trips:	74
Distance (km):	312.04
Duration (h:m:s):	09:12:26
Data Points:	32260

[Upload New Log](#)

View Reports Generated from MyLog

- Click on “View Reports Generated from My Log” to select the desired trip reporting function



View Reports Generated from My Log

Choose this option to view reports generated from the log you have uploaded.

View Reports Generated from My Log

 [return to myLogs](#)

Reports can be generated from your uploaded log files. Choose the report you wish to view by selecting it from the list below. Some reports have configurable parameters that can be customized. After choosing your settings, click **Set Options** to apply them to your report.

Choose a report:

- Overall Summary
- Speeding Exceptions
- Aggressive Acceleration
- Estimated Fuel Costs
- Detailed Trip Report

Customize this report:

Timezone:

Local Computer Time

Set Options

View Reports Generated from MyLog

- There are currently five different reports available:
 - Overall Trip Summary
 - Speeding exceptions
 - Aggressive Acceleration
 - Estimated Fuel Costs
 - Detailed Trip Report
- You can click on the “Save as PDF” icon to save the report as a PDF file
- The following slides provide you with an example of each report

Overall Trip Summary



Report Statistics

Total Distance: 312.04 km
Total Duration: 09:12:26
Total Idle Time: 01:49:36
Total Unlocked Time: 00:08:08

Report Parameters

Log Start: 5/12/2007 8:03:33 AM
Log End: 5/17/2007 8:18:35 AM
Otto Serial Number: 1005
Logfile Name: Otto1005-May17-07.ipl
Timezone: (GMT-05:00)

Overall Trip Summary

Trip	Trip Start	Trip End	Duration (h:m:s)	Distance (km)	Idle (h:m:s)	Unlocked (h:m:s)	Avg Speed (km/h)	Max Speed (km/h)
<u>1</u>	5/12/2007 8:03:33 AM	5/12/2007 8:08:37 AM	00:05:04	3.17	00:00:27	00:00:00	39.98	68.52
<u>2</u>	5/12/2007 12:36:06 PM	5/12/2007 12:42:08 PM	00:06:02	2.83	00:02:08	00:00:00	43.00	73.71
<u>3</u>	5/12/2007 12:45:36 PM	5/12/2007 12:57:11 PM	00:11:35	3.89	00:06:29	00:00:00	45.47	76.67
<u>4</u>	5/12/2007 12:57:27 PM	5/12/2007 12:59:32 PM	00:02:05	0.01	00:02:02	00:00:00	2.96	3.70
<u>5</u>	5/12/2007 1:07:21 PM	5/12/2007 1:11:36 PM	00:04:15	1.55	00:01:39	00:00:00	35.17	55.56
<u>6</u>	5/12/2007 1:16:45 PM	5/12/2007 1:17:48 PM	00:01:03	0.32	00:00:02	00:00:00	18.56	37.78
<u>7</u>	5/12/2007 6:01:54 PM	5/12/2007 6:24:48 PM	00:22:54	11.76	00:04:02	00:00:02	37.02	79.64
<u>8</u>	5/12/2007 9:20:05 PM	5/12/2007 9:27:36 PM	00:07:31	4.54	00:00:50	00:00:00	39.60	57.78
<u>9</u>	5/12/2007 9:30:33 PM	5/12/2007 9:35:56 PM	00:05:23	4.20	00:00:37	00:00:00	52.38	80.75
<u>64</u>	5/16/2007 2:10:35 PM	5/16/2007 2:21:36 PM	00:11:01	5.84	00:02:15	00:00:00	39.70	79.64
<u>65</u>	5/16/2007 2:22:38 PM	5/16/2007 2:22:40 PM	00:00:02	0.00	00:00:02	00:00:00	0.00	0.00
<u>66</u>	5/16/2007 2:51:54 PM	5/16/2007 3:08:08 PM	00:16:14	13.44	00:00:57	00:00:04	52.72	88.53
<u>67</u>	5/16/2007 4:38:11 PM	5/16/2007 5:03:18 PM	00:25:07	14.54	00:05:57	00:00:00	45.10	80.38
<u>68</u>	5/16/2007 5:10:16 PM	5/16/2007 5:15:07 PM	00:04:51	2.30	00:00:34	00:00:00	31.79	58.52
<u>69</u>	5/16/2007 7:31:18 PM	5/16/2007 7:33:51 PM	00:02:33	1.29	00:00:12	00:00:00	32.26	54.82
<u>70</u>	5/16/2007 8:55:53 PM	5/16/2007 8:58:11 PM	00:02:18	1.22	00:00:03	00:00:00	31.90	56.67
<u>71</u>	5/17/2007 7:12:46 AM	5/17/2007 7:37:02 AM	00:24:16	13.32	00:05:05	00:00:04	40.88	65.93
<u>72</u>	5/17/2007 8:02:29 AM	5/17/2007 8:06:41 AM	00:04:12	2.18	00:00:57	00:02:10	0.73	7.78
<u>73</u>	5/17/2007 8:11:47 AM	5/17/2007 8:16:20 AM	00:04:33	1.75	00:01:07	00:02:50	0.06	2.22
<u>74</u>	5/17/2007 8:17:22 AM	5/17/2007 8:18:35 AM	00:01:13	1.53	00:00:32	00:00:04	0.00	0.00
Totals:			09:12:26	312.04	01:49:36	00:08:08		

Classification	Duration	Distance	Percent of Total
Peak Transit Hours (6 AM-9 AM, 4 PM-7 PM)	02:16:23	83.57 km	24.69 %
Off-Peak Transit Hours (9 AM-4 PM)	03:18:34	106.72 km	35.94 %
Night Driving	00:35:00	21.76 km	6.34 %
Weekend Driving	03:02:29	100.00 km	33.03 %

“Speeding Exceptions”



Speeding Exceptions

Report Parameters

Log Start: 5/12/2007 8:03:33 AM
Log End: 5/17/2007 8:18:35 AM
Otto Serial Number: 1005
Logfile Name: Otto1005-May17-07.ipl
Velocity Tolerance: 10 %
Timezone: (GMT-05:00)

Trip #	Date/Time	Speed Limit	Max Speed	Duration (h:m:s)
1	5/12/2007 8:07:00 AM	60 km/h	68.52 km/h	00:00:09
3	5/12/2007 12:51:02 PM	60 km/h	68.52 km/h	00:00:11
5	5/12/2007 1:09:24 PM	50 km/h	55.56 km/h	00:00:02
7	5/12/2007 6:03:16 PM	50 km/h	56.30 km/h	00:00:06
7	5/12/2007 6:03:44 PM	50 km/h	57.04 km/h	00:00:06
7	5/12/2007 6:05:16 PM	60 km/h	74.45 km/h	00:00:25
7	5/12/2007 6:15:03 PM	50 km/h	59.26 km/h	00:00:09
7	5/12/2007 6:17:06 PM	50 km/h	56.30 km/h	00:00:07

“Excessive Acceleration & Braking”



Aggressive Acceleration

Report Parameters

Log Start: 5/12/2007 8:03:33 AM

Log End: 5/17/2007 8:18:35 AM

Otto Serial Number: 1005

Logfile Name: Otto1005-May17-07.jpl

Timezone: (GMT-05:00)

Hard Acceleration (0.28 to 0.48 g)
Extreme Acceleration (> 0.48 g)

Trip #	Date	Start Speed	End Speed	Acceleration (g)	Acceleration (km/h/s)
1	5/12/2007 8:04:53 AM	21.11 km/h	11.11 km/h	-0.28	-10.00
1	5/12/2007 8:06:26 AM	23.34 km/h	13.33 km/h	-0.28	-10.00
2	5/12/2007 12:37:41 PM	22.96 km/h	11.85 km/h	-0.31	-11.11
3	5/12/2007 12:51:25 PM	19.63 km/h	9.63 km/h	-0.28	-10.00
3	5/12/2007 12:51:48 PM	44.82 km/h	34.08 km/h	-0.30	-10.74
3	5/12/2007 12:51:49 PM	34.08 km/h	23.34 km/h	-0.30	-10.74
5	5/12/2007 1:10:39 PM	26.30 km/h	15.93 km/h	-0.29	-10.37
5	5/12/2007 1:11:25 PM	20.74 km/h	9.63 km/h	-0.31	-11.11
7	5/12/2007 8:05:00 PM	44.45 km/h	34.45 km/h	-0.30	-10.00

“Fuel Cost per Trip”



Report Parameters

Log Start: 5/12/2007 8:03:33 AM
Log End: 5/17/2007 8:18:35 AM
Otto Serial Number: 1005
Logfile Name: Otto1005-May17-07.ipl
Vehicle Fuel Economy: 10.00 L/100km
Fuel Cost at Pump: \$1.10/L
Fuel Used at Idle: 0.5 L/hour
Timezone: (GMT-05:00)

Estimated Fuel Costs

Trip #	Date/Time	Distance Travelled (km)	Idle Time (hours)	Fuel Consumed during Travel (L)	Fuel Consumed while Idle (L)	Total Cost
1	5/12/2007 8:03:33 AM	3.17	0.01	0.32	0.00	\$0.35
2	5/12/2007 12:36:06 PM	2.83	0.04	0.28	0.02	\$0.33
3	5/12/2007 12:45:36 PM	3.89	0.11	0.39	0.05	\$0.49
4	5/12/2007 12:57:27 PM	0.01	0.03	0.00	0.02	\$0.02
5	5/12/2007 1:07:21 PM	1.55	0.03	0.15	0.01	\$0.19
6	5/12/2007 1:16:45 PM	0.32	0.00	0.03	0.00	\$0.04
7	5/12/2007 6:01:54 PM	11.76	0.07	1.18	0.03	\$1.33
8	5/12/2007 9:20:05 PM	4.54	0.01	0.45	0.01	\$0.51
9	5/12/2007 9:30:33 PM	4.20	0.01	0.42	0.01	\$0.47

“Detailed Trip Information”



Trip 1 Details

Report Parameters

Log Start: 5/12/2007 8:03:33 AM
Log End: 5/12/2007 12:36:06 PM
Otto Serial Number: 1005
Logfile Name: Otto1005-May17-07.ipl
Logging Interval: 1 second(s)
Timezone: (GMT-05:00)

Start	Event Reason	Latitude/Longitude	Distance (km)	Duration (h:m:s)	Max Speed (km/h)	Unlocked Time (h:m:s)
5/12/2007 8:03:33 AM	STOPPED / IDLE	<u>(49.8091, -97.2035)</u>	-	00:00:03	-	00:00:00
5/12/2007 8:03:35 AM	TRAVELLING	<u>(49.8092, -97.2034)</u>	0.89	00:01:21	50.37	00:00:00
5/12/2007 8:04:55 AM	STOPPED / IDLE	<u>(49.8143, -97.2014)</u>	-	00:00:04	-	00:00:00
5/12/2007 8:04:58 AM	TRAVELLING	<u>(49.8143, -97.2013)</u>	0.34	00:00:36	53.34	00:00:00
5/12/2007 8:05:33 AM	STOPPED / IDLE	<u>(49.8155, -97.1970)</u>	-	00:00:15	-	00:00:00
5/12/2007 8:05:47 AM	TRAVELLING	<u>(49.8155, -97.1970)</u>	1.93	00:02:40	68.52	00:00:00
5/12/2007 8:08:26 AM	STOPPED / IDLE	<u>(49.8170, -97.1755)</u>	-	00:00:09	-	00:00:00
5/12/2007 8:08:34 AM	TRAVELLING	<u>(49.8171, -97.1755)</u>	0.01	00:00:03	5.56	00:00:00
Totals:			3.17	00:05:04	68.52	00:00:00

“View where I drove on a Map” (1)

- Select “View where I drove on a map” if you wish to view your trips on GoogleEarth 3D®



View Where I Drove on a Map

Choose this option to see where you drove on a 3D map using Google Earth.



- The next screen that appears will give you the option to download GoogleEarth 3D® if you do not already have this loaded
 - Select the GoogleEarth 3D® icon if you have already downloaded the application and this will launch GoogleEarth® and will overlay your trips on the globe

“View where I drove on a Map” (2)

[Home](#) [myDevice](#) [myLogs](#) [myAccount](#) [help & downloads](#)


View Where I Drove on a Map

You can see exactly where you drove on an interactive map using Google Earth. Google Earth is the free software application offered by Google Inc. that gives you a 3-dimensional perspective of the entire world. In two easy steps, you will be flying through your OttoLog trails in 3D!

1. If you do not have Google Earth installed, download the free version from Google's website and install it using the instructions found on Google's website:

2. Click the link below to view your map in Google Earth:


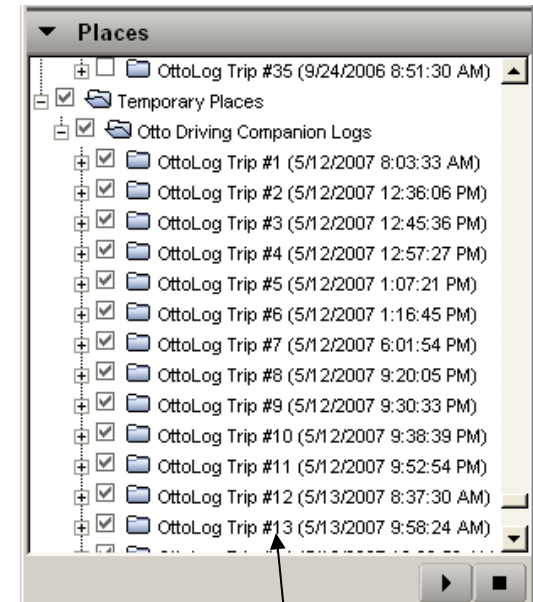
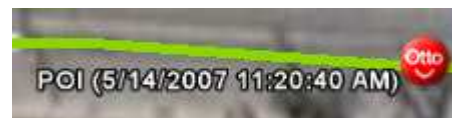
Otto 04066 connected
Registered to PERSENTECH Map Tester

[return to myLogs](#)



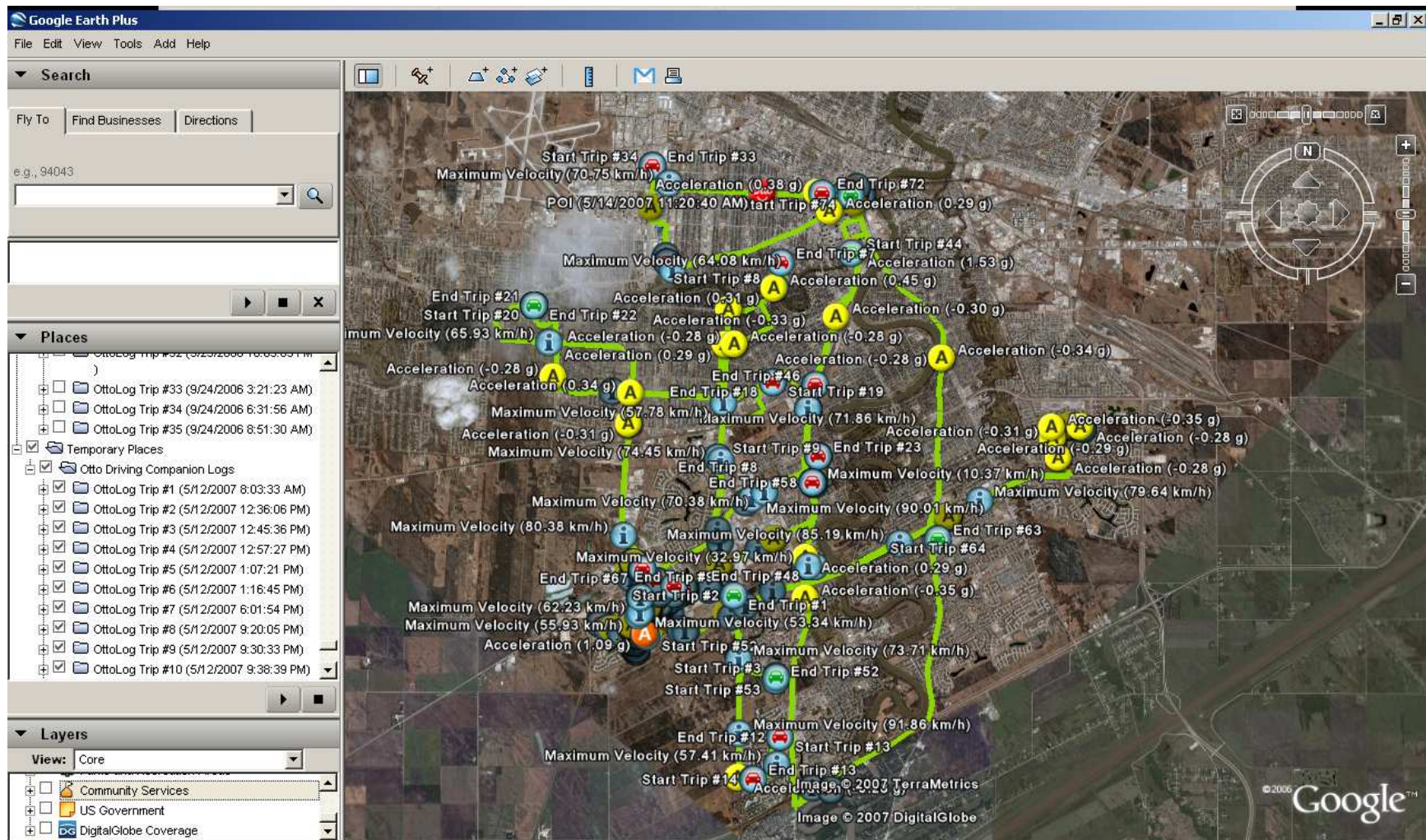
“View where I drove on a Map” (3)

- When GoogleEarth 3D opens, you will see a temporary folder with the OttoLog Trips shown in the left sidebar
- In the main screen, you will see all the trips highlighted as green lines along with all the driving behaviour alerts that include:
 - Acceleration-deceleration points
 - Maximum velocity points
 - Start Trip points
 - End Trip points
 - Points of Interest that the user has previously marked



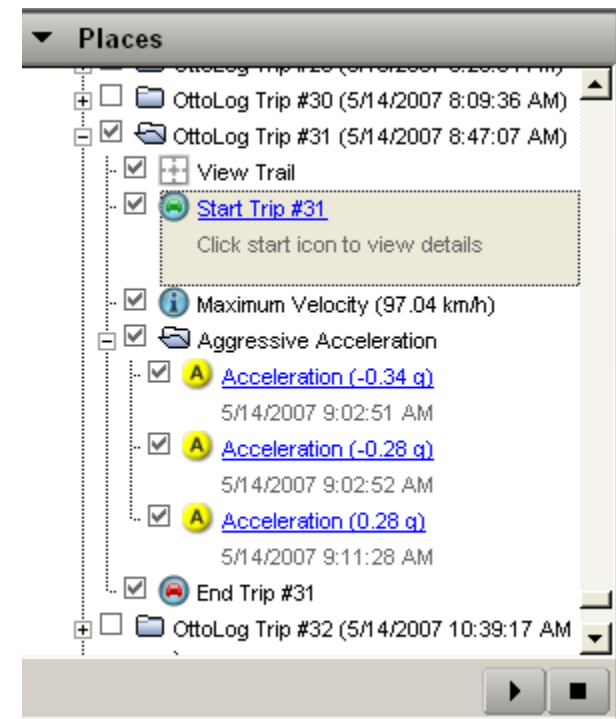
Trip Number
followed by
date and time

View where I drove on a Map" (4)

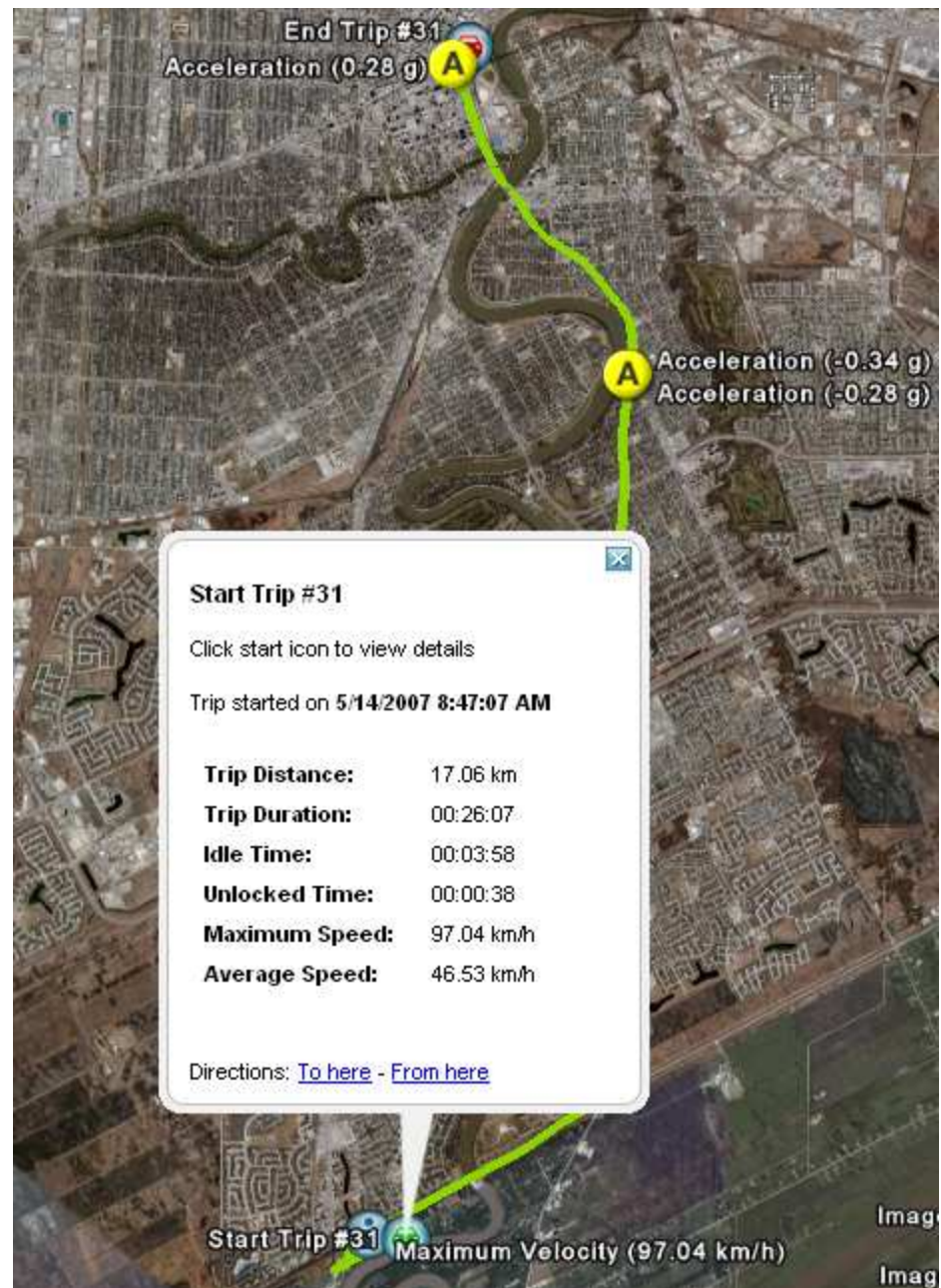


View where I drove on a Map” (5)

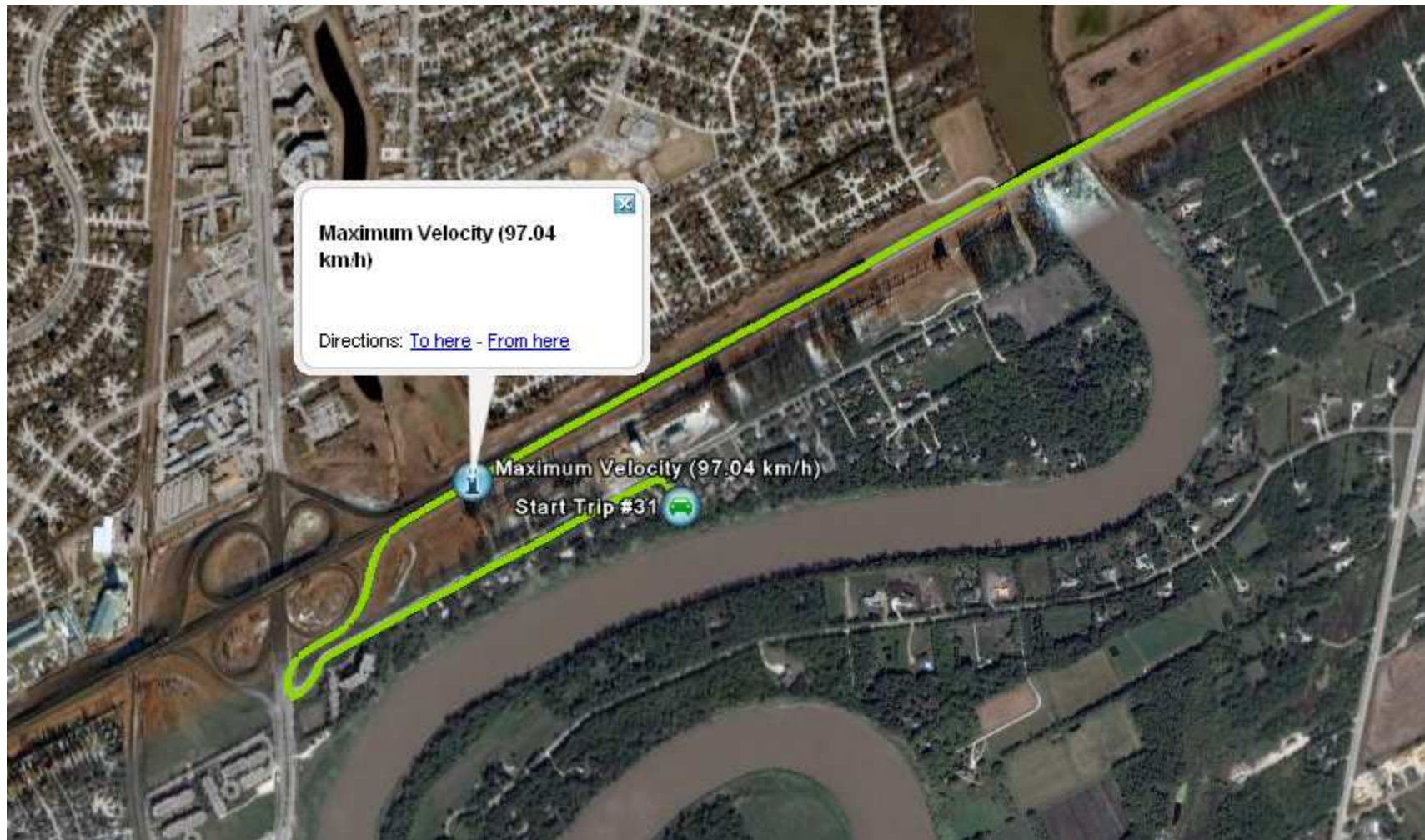
- You can view individual trips and the information on the trip
 - In the left hand side “Places” pane on the screen, select only one trip → OttoLog Trip #31
 - You can expand the trip to:
 - View Trail
 - Click the start icon to view details
 - Click on the maximum velocity
 - Click on the Aggressive Acceleration
 - Click on the stop icon to view details
 - The Google Earth 3D® map of trip #31 with the start icon clicked is shown in the following slide as an example



View where I drove on a Map” (5)



View where I drove on a Map" (6)



GoogleEarth3D®

- Google Earth 3D® is a powerful application program that allows the user to do many different overlays of information
- PERSENTECH suggests that the user review the GoogleEarth 3D® Help section to learn more about using the tool
- Click on “Help” and select “User Guide” to get this additional information
- <http://earth.google.com/userguide/v4/>

Google Earth User Guide

Introduction



This user guide describes Google Earth Version 4.1 and later.

Welcome to Google Earth! Once you [download](#) and [install](#) Google Earth, your computer becomes a window to anywhere on the planet, allowing you to view high-resolution aerial and satellite imagery, elevation terrain, road and street labels, business listings, and more. See [Five Cool, Easy Things You Can Do in Google Earth](#).

You can [view a printable version of this user guide](#) (free [Adobe Reader](#) required).

Use the following topics to learn Google Earth basics - navigating the globe, searching, printing, and more:

- [Getting to know Google Earth](#)
- [New features in Version 4.1](#)
- [Navigating in Google Earth](#)
- [Finding places and directions](#)
- [Marking places on the earth](#)
- [Showing or hiding points of interest](#)
- [Tilting and viewing hilly terrain](#)
- [Sight seeing](#)

For other topics in this documentation, see the table of contents (left) or check out these important topics:

- [Making movies with Google Earth](#)
- [Using layers](#)
- [Using places](#)
- [Managing search results](#)
- [Measuring distances and areas](#)
- [Drawing paths and polygons](#)
- [Using image overlays](#)
- [Using GPS devices with Google Earth](#)

“Export Log in Another Format” (1)

- If you wish to export your OttoLog trip data to another application program, click on “Export Log in Another Format”



Export Log in Another Format

Your log can be exported and saved to a number of different formats so that it can be viewed and processed in third party applications.

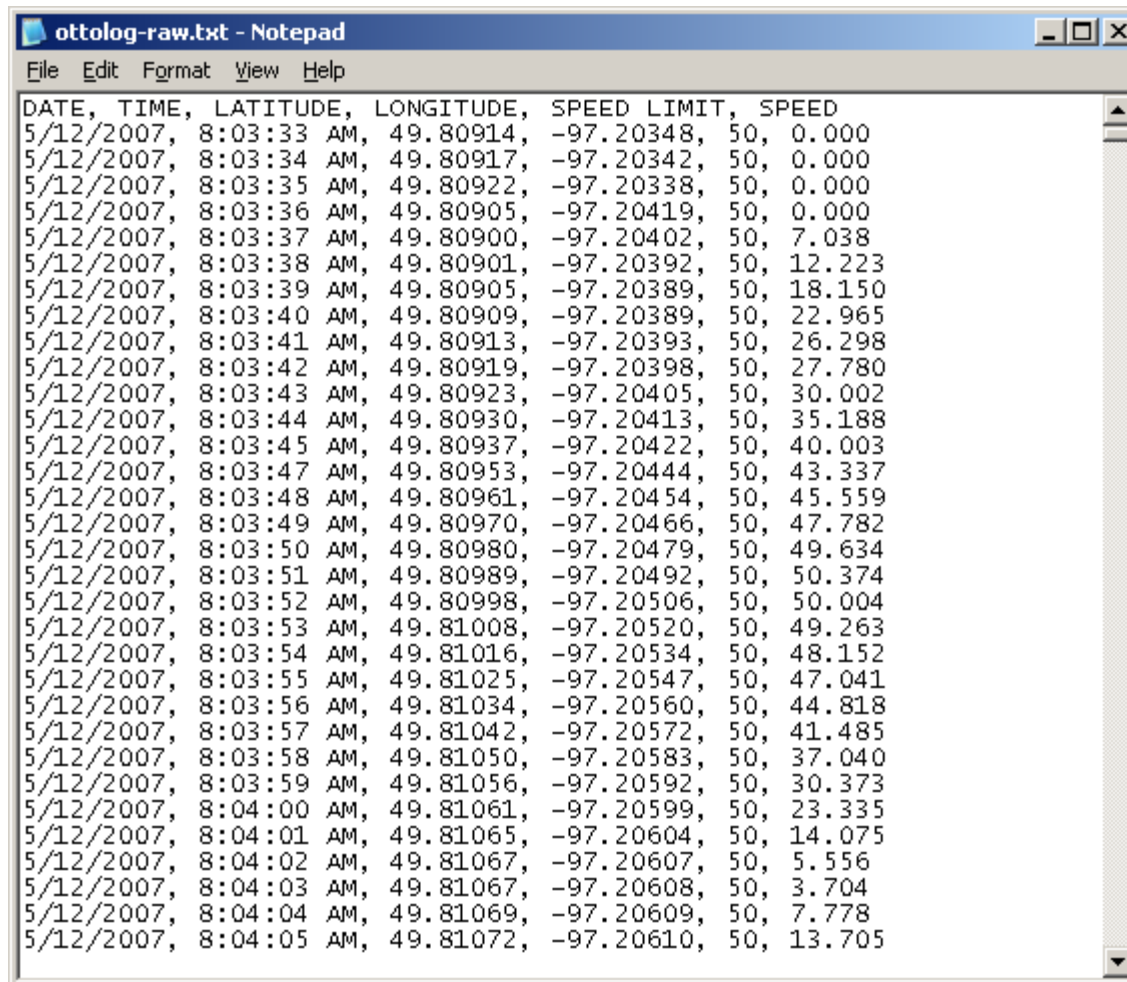
- The types of format supported at this time include:
 - PDF file format of all the trip points
 - ASCII text file format of all the trip points
 - GPX file format for use with back-office server applications
 - Microsoft Streets & Trips® File format for viewing the trip data points in this application software
- Examples of these file formats are provided on the next several slides

“Export Log in Another Format” (2)

PDF File Format

DATE	TIME	LATITUDE	LONGITUDE	SPEED LIMIT	SPEED
5/12/2007	8:03:33 AM	49.80914	-97.20348	50	0.000
5/12/2007	8:03:34 AM	49.80917	-97.20342	50	0.000
5/12/2007	8:03:35 AM	49.80922	-97.20338	50	0.000
5/12/2007	8:03:36 AM	49.80905	-97.20419	50	0.000
5/12/2007	8:03:37 AM	49.80900	-97.20402	50	7.038
5/12/2007	8:03:38 AM	49.80901	-97.20392	50	12.223
5/12/2007	8:03:39 AM	49.80905	-97.20389	50	18.150
5/12/2007	8:03:40 AM	49.80909	-97.20389	50	22.965
5/12/2007	8:03:41 AM	49.80913	-97.20393	50	26.298
5/12/2007	8:03:42 AM	49.80919	-97.20398	50	27.780
5/12/2007	8:03:43 AM	49.80923	-97.20405	50	30.002
5/12/2007	8:03:44 AM	49.80930	-97.20413	50	35.188
5/12/2007	8:03:45 AM	49.80937	-97.20422	50	40.003
5/12/2007	8:03:47 AM	49.80953	-97.20444	50	43.337
5/12/2007	8:03:48 AM	49.80961	-97.20454	50	45.556
5/12/2007	8:03:49 AM	49.80970	-97.20468	50	47.782
5/12/2007	8:03:50 AM	49.80980	-97.20479	50	49.634
5/12/2007	8:03:51 AM	49.80989	-97.20492	50	50.374
5/12/2007	8:03:52 AM	49.80998	-97.20508	50	50.004
5/12/2007	8:03:53 AM	49.81008	-97.20520	50	49.263
5/12/2007	8:03:54 AM	49.81016	-97.20534	50	48.152
5/12/2007	8:03:55 AM	49.81025	-97.20547	50	47.041
5/12/2007	8:03:56 AM	49.81034	-97.20560	50	44.818
5/12/2007	8:03:57 AM	49.81042	-97.20572	50	41.485
5/12/2007	8:03:58 AM	49.81050	-97.20583	50	37.040
5/12/2007	8:03:59 AM	49.81058	-97.20592	50	30.373
5/12/2007	8:04:00 AM	49.81061	-97.20599	50	23.335
5/12/2007	8:04:01 AM	49.81065	-97.20604	50	14.075
5/12/2007	8:04:02 AM	49.81067	-97.20607	50	5.556
5/12/2007	8:04:03 AM	49.81067	-97.20608	50	3.704
5/12/2007	8:04:04 AM	49.81069	-97.20609	50	7.778
5/12/2007	8:04:05 AM	49.81072	-97.20610	50	13.705
5/12/2007	8:04:06 AM	49.81079	-97.20609	50	20.002
5/12/2007	8:04:07 AM	49.81086	-97.20605	50	23.335
5/12/2007	8:04:08 AM	49.81094	-97.20599	50	27.039
5/12/2007	8:04:09 AM	49.81100	-97.20592	50	28.521
5/12/2007	8:04:10 AM	49.81108	-97.20584	50	32.225

“Export Log in Another Format” (3)



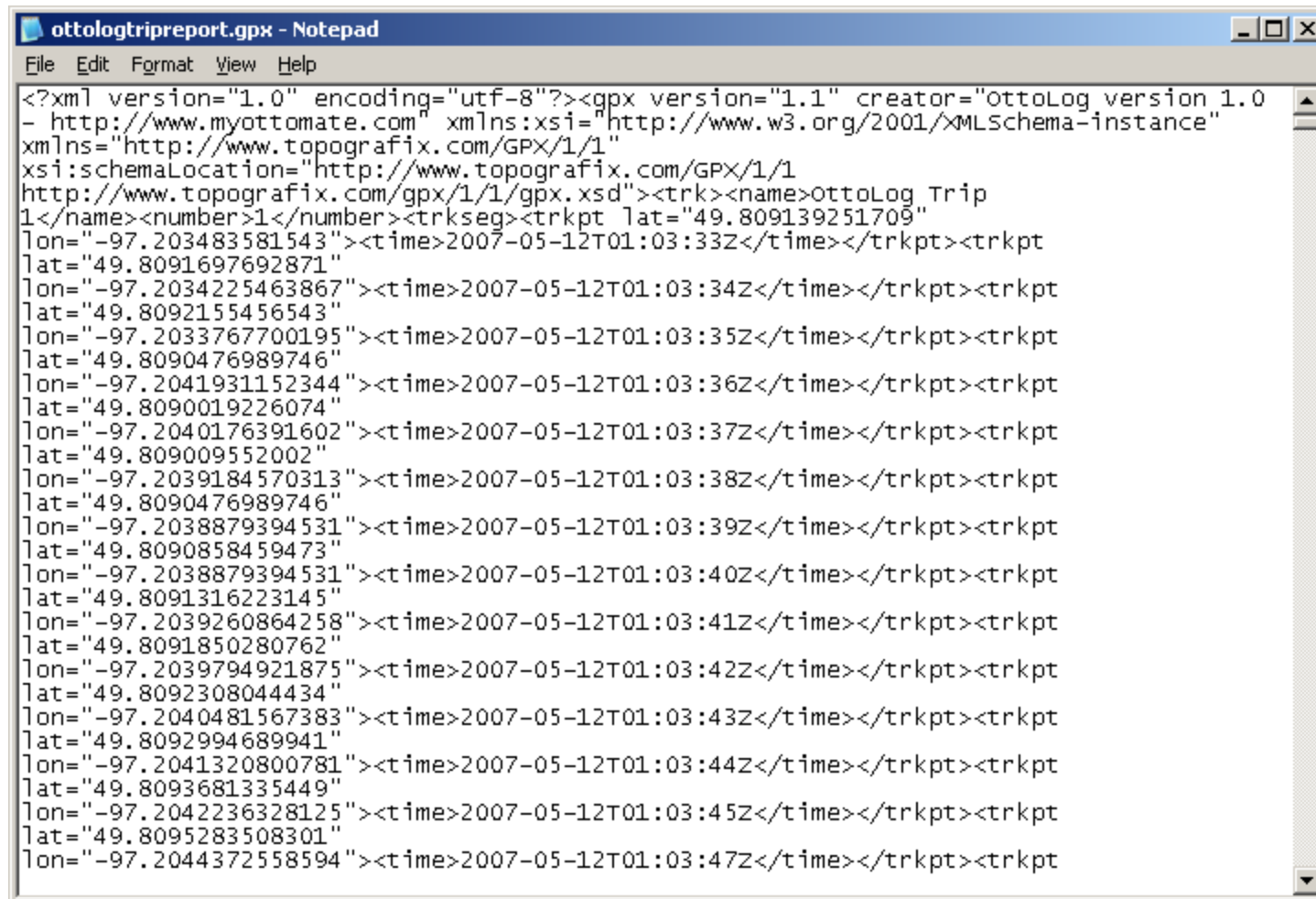
ottolog-raw.txt - Notepad

File Edit Format View Help

DATE	TIME	LATITUDE	LONGITUDE	SPEED LIMIT	SPEED
5/12/2007	8:03:33 AM	49.80914	-97.20348	50	0.000
5/12/2007	8:03:34 AM	49.80917	-97.20342	50	0.000
5/12/2007	8:03:35 AM	49.80922	-97.20338	50	0.000
5/12/2007	8:03:36 AM	49.80905	-97.20419	50	0.000
5/12/2007	8:03:37 AM	49.80900	-97.20402	50	7.038
5/12/2007	8:03:38 AM	49.80901	-97.20392	50	12.223
5/12/2007	8:03:39 AM	49.80905	-97.20389	50	18.150
5/12/2007	8:03:40 AM	49.80909	-97.20389	50	22.965
5/12/2007	8:03:41 AM	49.80913	-97.20393	50	26.298
5/12/2007	8:03:42 AM	49.80919	-97.20398	50	27.780
5/12/2007	8:03:43 AM	49.80923	-97.20405	50	30.002
5/12/2007	8:03:44 AM	49.80930	-97.20413	50	35.188
5/12/2007	8:03:45 AM	49.80937	-97.20422	50	40.003
5/12/2007	8:03:47 AM	49.80953	-97.20444	50	43.337
5/12/2007	8:03:48 AM	49.80961	-97.20454	50	45.559
5/12/2007	8:03:49 AM	49.80970	-97.20466	50	47.782
5/12/2007	8:03:50 AM	49.80980	-97.20479	50	49.634
5/12/2007	8:03:51 AM	49.80989	-97.20492	50	50.374
5/12/2007	8:03:52 AM	49.80998	-97.20506	50	50.004
5/12/2007	8:03:53 AM	49.81008	-97.20520	50	49.263
5/12/2007	8:03:54 AM	49.81016	-97.20534	50	48.152
5/12/2007	8:03:55 AM	49.81025	-97.20547	50	47.041
5/12/2007	8:03:56 AM	49.81034	-97.20560	50	44.818
5/12/2007	8:03:57 AM	49.81042	-97.20572	50	41.485
5/12/2007	8:03:58 AM	49.81050	-97.20583	50	37.040
5/12/2007	8:03:59 AM	49.81056	-97.20592	50	30.373
5/12/2007	8:04:00 AM	49.81061	-97.20599	50	23.335
5/12/2007	8:04:01 AM	49.81065	-97.20604	50	14.075
5/12/2007	8:04:02 AM	49.81067	-97.20607	50	5.556
5/12/2007	8:04:03 AM	49.81067	-97.20608	50	3.704
5/12/2007	8:04:04 AM	49.81069	-97.20609	50	7.778
5/12/2007	8:04:05 AM	49.81072	-97.20610	50	13.705

Text File Format

“Export Log in Another Format” (4)

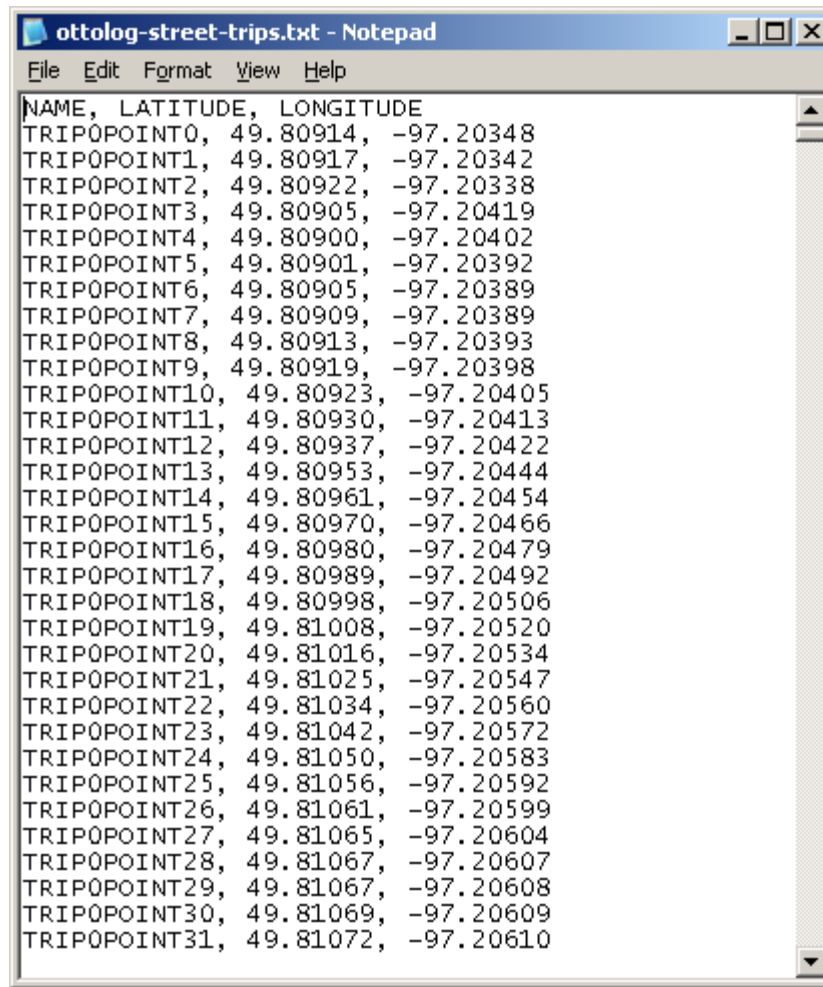


The screenshot shows a Notepad window with the title 'ottologtripreport.gpx - Notepad'. The menu bar includes File, Edit, Format, View, and Help. The text area contains XML code for a GPX file. The code starts with an XML declaration and a root element <gpx> with attributes version='1.1', creator='OttoLog version 1.0', and a URL. It includes namespaces for xsi and topografix. The main content is a <trk> element with a <name>OttoLog Trip</name>, a <number>1</number>, and a <trkseg> containing a series of <trkpt> elements. Each <trkpt> element has attributes for longitude (lon), latitude (lat), and time (time). The coordinates and times represent a sequence of points along a trip.

```
<?xml version="1.0" encoding="utf-8"?><gpx version="1.1" creator="OttoLog version 1.0"
- http://www.myottomate.com" xmlns:xsi="http://www.w3.org/2001/XMLSchema-instance"
xmlns="http://www.topografix.com/GPX/1/1"
xsi:schemaLocation="http://www.topografix.com/GPX/1/1
http://www.topografix.com/gpx/1/1/gpx.xsd"><trk><name>OttoLog Trip
1</name><number>1</number><trkseg><trkpt lat="49.809139251709"
lon="-97.203483581543"><time>2007-05-12T01:03:33Z</time></trkpt><trkpt
lat="49.8091697692871"
lon="-97.2034225463867"><time>2007-05-12T01:03:34Z</time></trkpt><trkpt
lat="49.8092155456543"
lon="-97.2033767700195"><time>2007-05-12T01:03:35Z</time></trkpt><trkpt
lat="49.8090476989746"
lon="-97.2041931152344"><time>2007-05-12T01:03:36Z</time></trkpt><trkpt
lat="49.8090019226074"
lon="-97.2040176391602"><time>2007-05-12T01:03:37Z</time></trkpt><trkpt
lat="49.809009552002"
lon="-97.2039184570313"><time>2007-05-12T01:03:38Z</time></trkpt><trkpt
lat="49.8090476989746"
lon="-97.2038879394531"><time>2007-05-12T01:03:39Z</time></trkpt><trkpt
lat="49.8090858459473"
lon="-97.2038879394531"><time>2007-05-12T01:03:40Z</time></trkpt><trkpt
lat="49.8091316223145"
lon="-97.2039260864258"><time>2007-05-12T01:03:41Z</time></trkpt><trkpt
lat="49.8091850280762"
lon="-97.2039794921875"><time>2007-05-12T01:03:42Z</time></trkpt><trkpt
lat="49.8092308044434"
lon="-97.2040481567383"><time>2007-05-12T01:03:43Z</time></trkpt><trkpt
lat="49.8092994689941"
lon="-97.2041320800781"><time>2007-05-12T01:03:44Z</time></trkpt><trkpt
lat="49.8093681335449"
lon="-97.2042236328125"><time>2007-05-12T01:03:45Z</time></trkpt><trkpt
lat="49.8095283508301"
lon="-97.2044372558594"><time>2007-05-12T01:03:47Z</time></trkpt><trkpt
```

GPX File
Format

“Export Log in Another Format” (4)

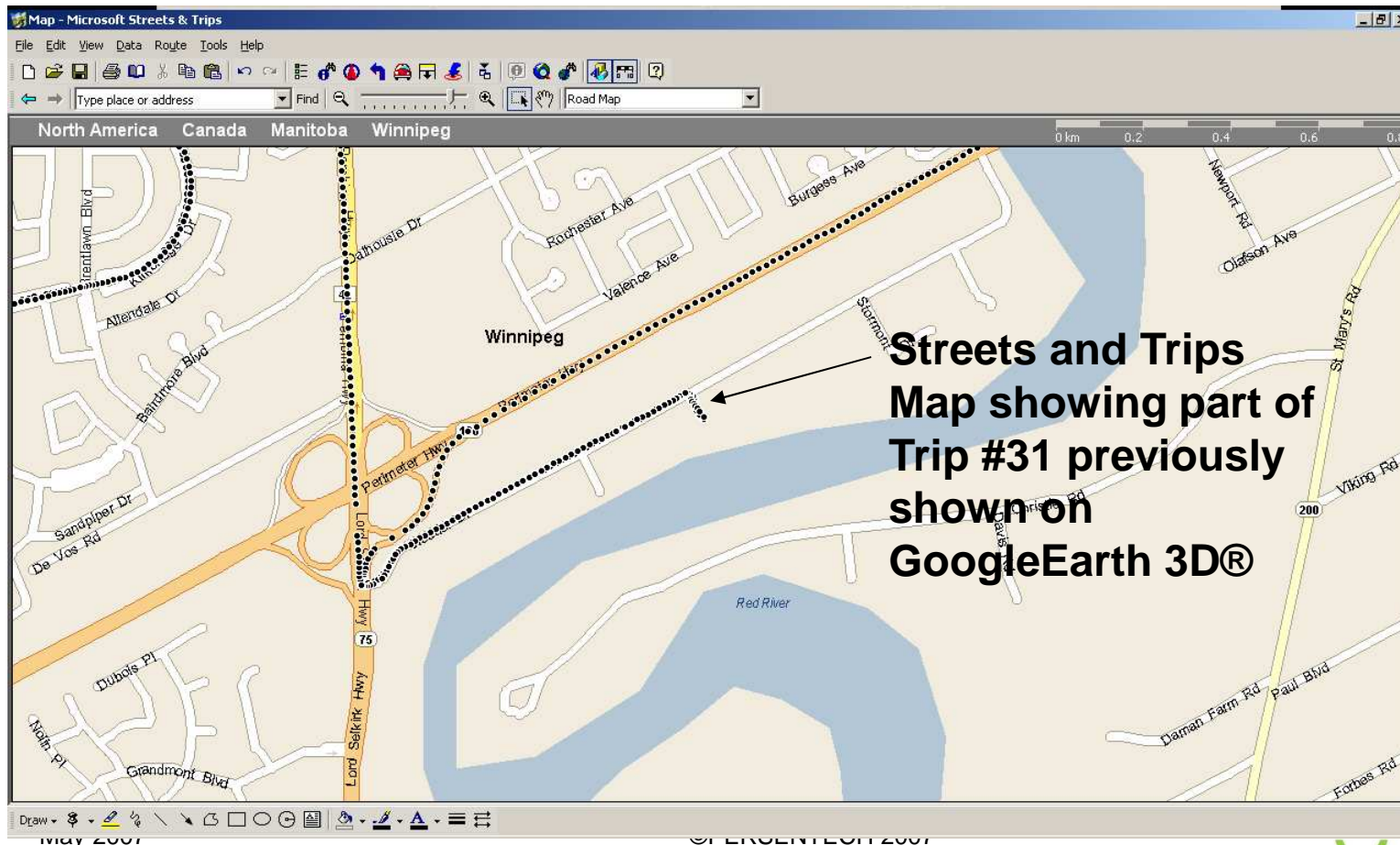


```
ottolog-street-trips.txt - Notepad
File Edit Format View Help
NAME, LATITUDE, LONGITUDE
TRIP0POINT0, 49.80914, -97.20348
TRIP0POINT1, 49.80917, -97.20342
TRIP0POINT2, 49.80922, -97.20338
TRIP0POINT3, 49.80905, -97.20419
TRIP0POINT4, 49.80900, -97.20402
TRIP0POINT5, 49.80901, -97.20392
TRIP0POINT6, 49.80905, -97.20389
TRIP0POINT7, 49.80909, -97.20389
TRIP0POINT8, 49.80913, -97.20393
TRIP0POINT9, 49.80919, -97.20398
TRIP0POINT10, 49.80923, -97.20405
TRIP0POINT11, 49.80930, -97.20413
TRIP0POINT12, 49.80937, -97.20422
TRIP0POINT13, 49.80953, -97.20444
TRIP0POINT14, 49.80961, -97.20454
TRIP0POINT15, 49.80970, -97.20466
TRIP0POINT16, 49.80980, -97.20479
TRIP0POINT17, 49.80989, -97.20492
TRIP0POINT18, 49.80998, -97.20506
TRIP0POINT19, 49.81008, -97.20520
TRIP0POINT20, 49.81016, -97.20534
TRIP0POINT21, 49.81025, -97.20547
TRIP0POINT22, 49.81034, -97.20560
TRIP0POINT23, 49.81042, -97.20572
TRIP0POINT24, 49.81050, -97.20583
TRIP0POINT25, 49.81056, -97.20592
TRIP0POINT26, 49.81061, -97.20599
TRIP0POINT27, 49.81065, -97.20604
TRIP0POINT28, 49.81067, -97.20607
TRIP0POINT29, 49.81067, -97.20608
TRIP0POINT30, 49.81069, -97.20609
TRIP0POINT31, 49.81072, -97.20610
```

Streets and Trips File
Format

“Export Log in Another Format” (5)

- Sample of trip trace from the Streets and Trips output file loaded into the Microsoft Streets and Trips® Application Software
 - Open Application → Data Tab → Import Data Wizard → Select filename ottolog-street-trips.txt → Choose the Comma character separator → Select Country Region → Click Finish



Appendix

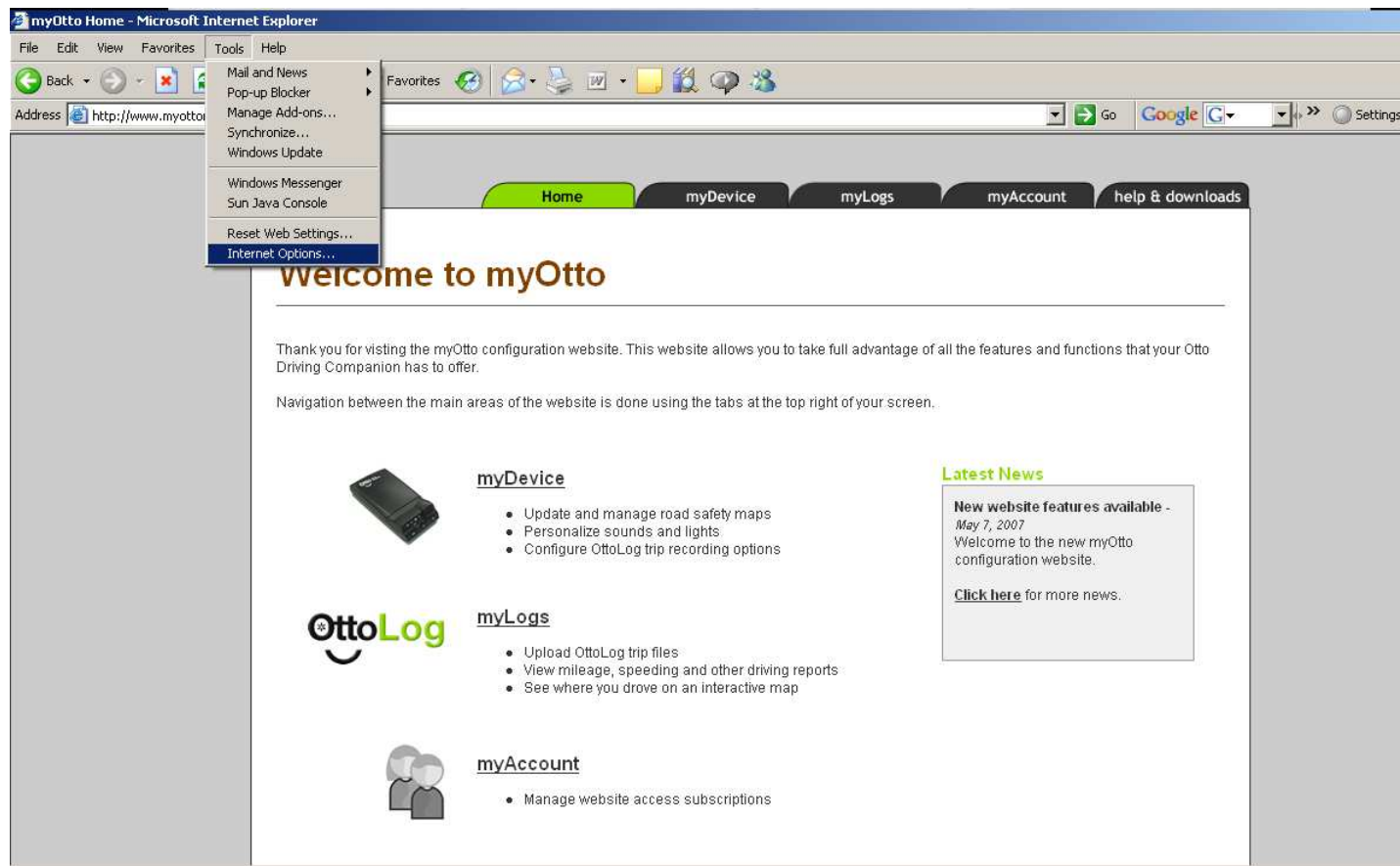
- This appendix contains information relating to security settings on your Microsoft Internet Explorer® browser application
- The default settings on the IE 6 and IE7 browser applications in the “Medium-High” security setting are sufficient to allow the ActiveX® element to be downloaded
- In some cases, however, other programs or a user may have changed the settings and so you will need to verify your IE configuration settings to allow your IE browser application to communicate with your Otto device

IE6 Explorer Settings (1)

- The default IE6 (Internet Explorer version 6) settings will allow the ActiveX® control to be downloaded
 - In some cases, the IE security settings may have been changed and this may prevent you from downloading and installing the ActiveX® control
- The following screens show you the settings that are required on your IE6 application to ensure that you can download the control and enable the communication between the Otto device and the IE6 application

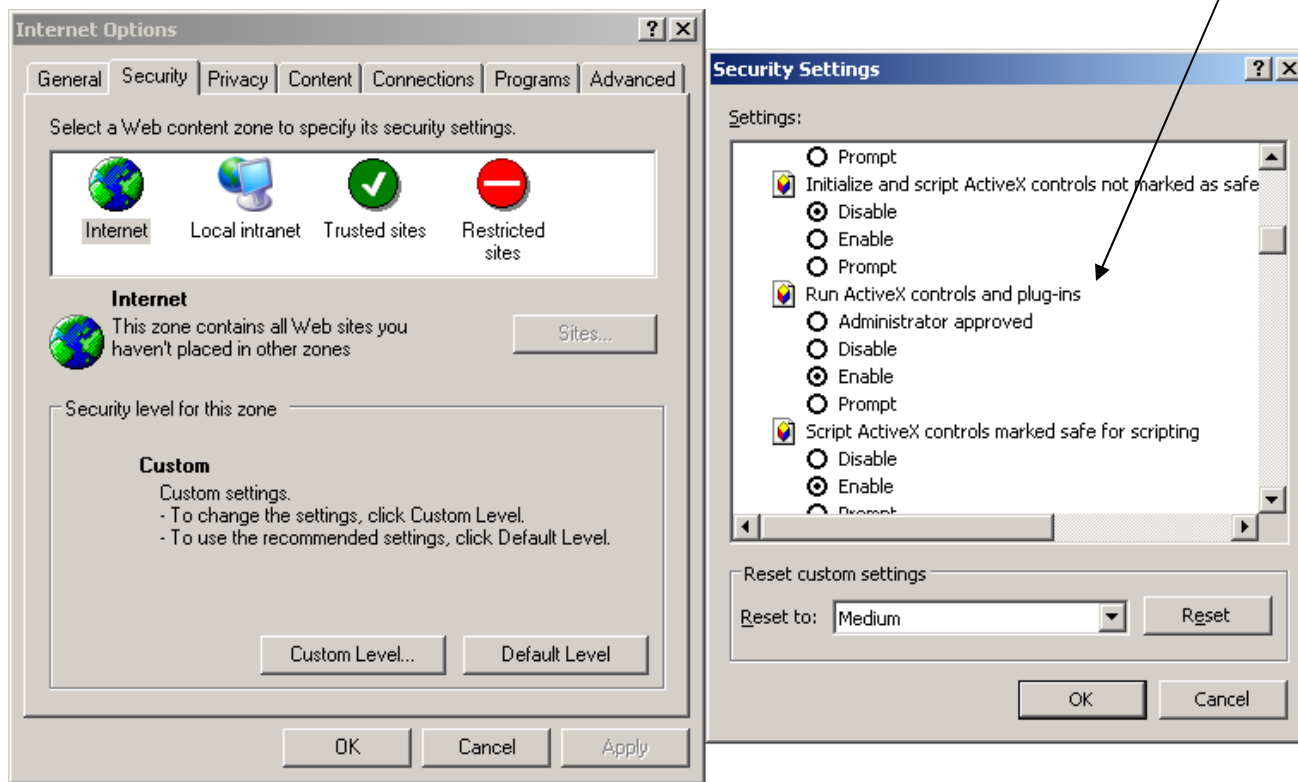
IE6 Explorer Settings (2)

- Select Tools → Internet Options



IE6 Explorer Settings (3)

- Select the “Security” Tab → Then select “Custom Level”
 - Make sure that the “Run ActiveX controls and plug-ins is “Enabled”

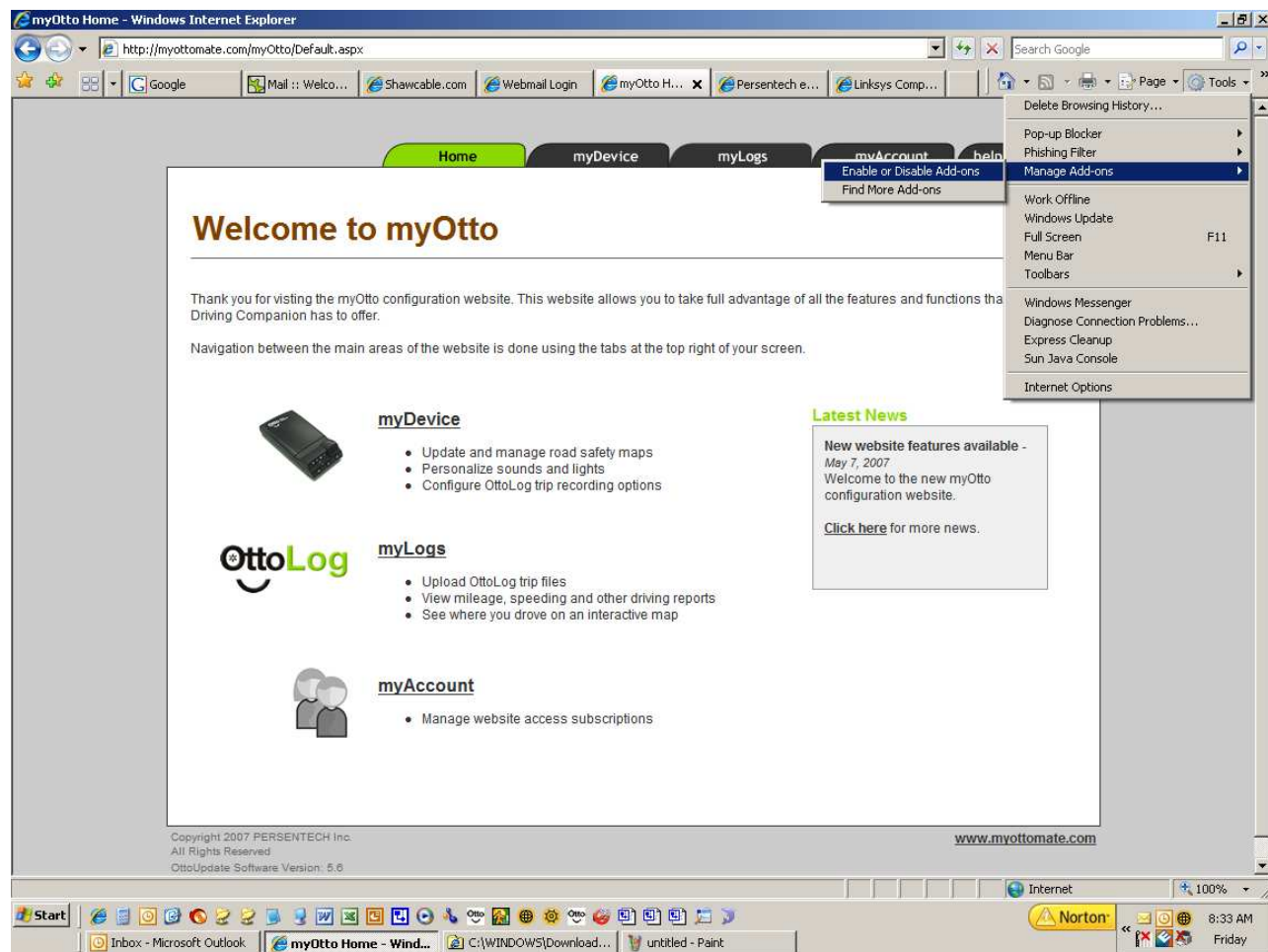


IE7 Explorer Settings (1)

- The Internet Explorer® version 7 web browser application is similar to the IE6 application, but has one additional security setting that you may be required to select
 - Once again, by default, most security settings in their default state do not need to be changed to allow for operation with Otto
 - In some instances, however, the user and/or other application programs may have made some changes to the default settings
 - The following slides show the settings that need to be verified with the IE7 browser application if you are experiencing difficulty in downloading the ActiveX® control

IE7 Explorer Settings (2)

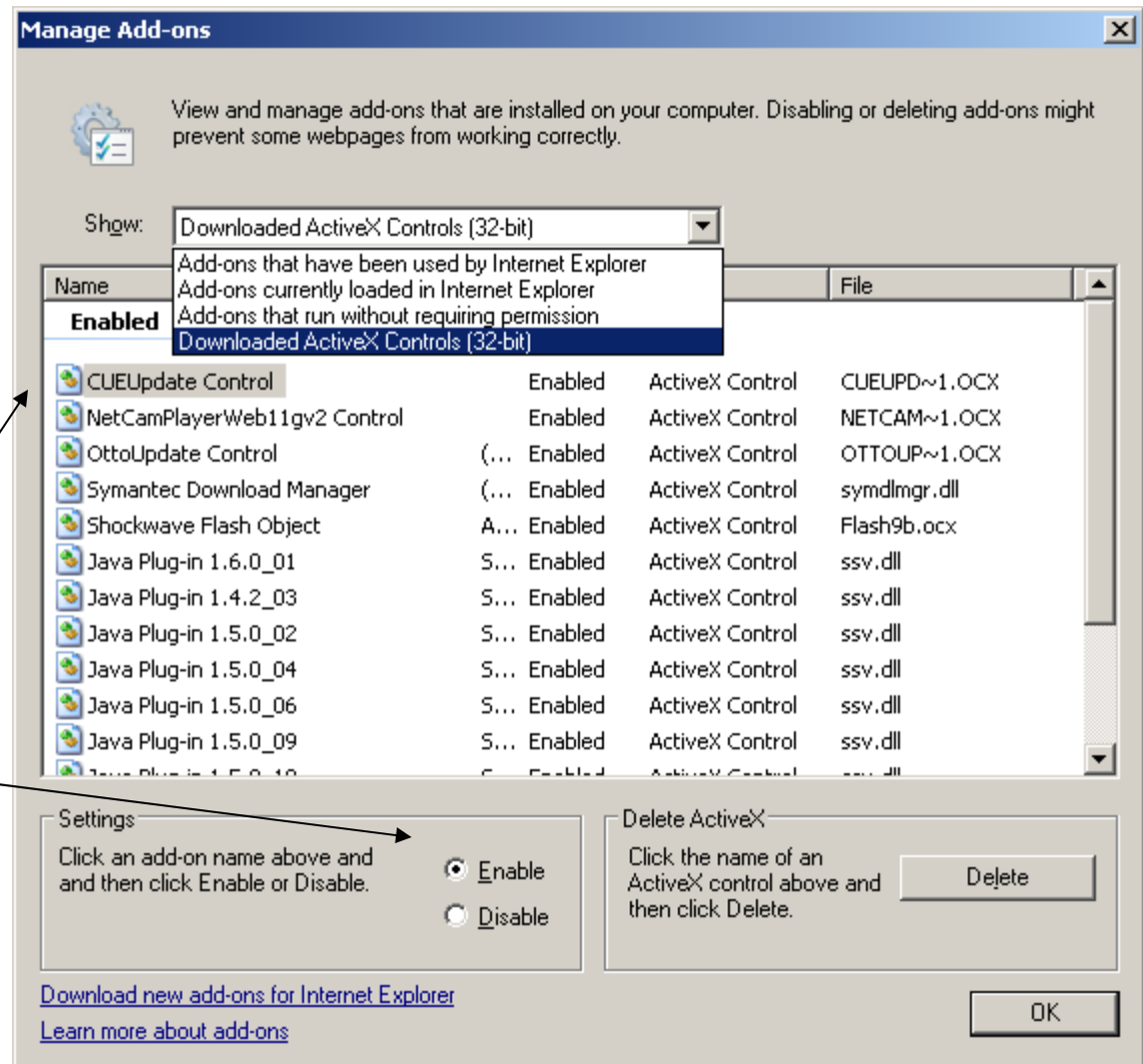
- Select Tools → “Manage Add-ons” → “Enable or Disable Add-ons” from the main IE7 Menu bar



May-2007

IE7 Explorer Settings (3)

- Select “Downloaded ActiveX controls (32 bit)” or “Add-ons currently loaded in Internet Explorer” and ensure that the “CUEUpdate Control” ActiveX control is “Enabled”



IE7 Explorer Settings (4)

- The “Security” → “Custom Level” → Enable “Run ActiveX controls and plug-ins” setting should also be set
 - This is the same as for the IE6 browser application
 - Remember, by default at the Medium-High Setting, this will already be set

