

# NextSpeak – Mandarin TTS

## User Guide

# Table of Content

1. Introduction.....	3
2. Installation of NextSpeak - Mandarin TTS Player.....	4
2.1 Install NextSpeak - Mandarin TTS Program Module.....	4
2.2 NeoSpeech Lily (Mandarin) End User License.....	6
2.3 Install NextSpeak Data Library.....	8
2.4 Install NextDict Multi-lingual Dictionary.....	8
2.5 Install Microsoft Office Add-in.....	9
2.6 Uninstall NextSpeak - Mandarin TTS Program Module.....	9
2.7 Uninstall NextSpeak - Mandarin TTS Library.....	9
2.8 Uninstall NextDict Multi-lingual Dictionary.....	9
2.9 Uninstall Microsoft Office Add-in.....	9
3. NextSpeak - Mandarin TTS User Interface.....	10
3.1 Large View Mode.....	10
3.2 Minimized Mode.....	10
3.3.1 Library Panel.....	12
3.3.2 Playlist Panel.....	12
3.3.3 Icon Panel.....	12
4. NextSpeak - Mandarin TTS Settings.....	13
5. NextSpeak - Mandarin TTS Menu.....	14
5.1 File Menu.....	14
5.2 View Menu.....	14
5.3 Tool Menu.....	15
5.4 Help Menu.....	15
6. Library Management.....	16
6.1 Create a New Library.....	16
7. Playback of Library Content.....	17
8. Play Text Content.....	18
9. NextDict Multi-lingual Dictionary.....	18
9.1 NextDict User Interface.....	19
10. Playback of Websites.....	20
11. User Defined Pronunciation.....	21
12. Using NextSpeak - Mandarin TTS in Impress.....	23
12.1 Speak Presentation Content.....	23
12.2 Speak Presentation Notes.....	23
13. Using NextSpeak - Mandarin TTS in NextOffice.....	24
14. Using NextSpeak - Mandarin TTS with Microsoft Office.....	25
15. NextSpeak - Mandarin TTS Microsoft Office Add-in.....	26
16. LICENSE AGREEMENT .....	27

## Service Support Serial No & NeoSpeech Voice (PuTongHua) License :



This license is issued by Well Develop International Limited for the right of the licensee to install and to use <NextSpeak - Mandarin TTS> on one single PC. By registering to Well Develop International Limited within 14 Days after purchase, the licensee can enjoy 90-day hotline and email support services (long-distance telephone fees have to be borne by the licensee).

## 1. Introduction

NextSpeak - Mandarin TTS is a Text-To-Speech player designed for professional language learner. It is bundled with the Lily-16 PuTongHua SAPI 5 compliant female voice licensed from NeoSpeech. Sophisticated functions include:

- Pitch, Rate and Volume. Users can adjust the pace according to his/her level.
- Precise control on line break adjustment. You can group commonly used phrase into a file.
- Lip-sync with character animation so that you can easily follow the pronunciation.
- Text zoom-in/zoom-out that help to enhance the usability for senior and visually impaired users.
- PuTongHua PinYin font for easily matching the pronunciation with the phonetic symbols.
- Export to MP3 to allow frequent commuter to best utilize their traveling time.
- Unicode compliant and supporting English, Chinese Simplified and Traditional.
- Automatically provide Chinese Simplified and Chinese Traditional conversion to enhance compatibility with selected voice.
- Allow enforcement to "always use Native Language Speaking" so that mixing Chinese and English will no long have the English content sounding odd to native English speakers.
- Support "Speech" and "Word by Word" play mode
- Library and content management function to make practice as easy as possible.
- Support Random/Sequential Loop playback so that you can practice without hand-on control.
- Support speaking out of website content
- Support Clipboard capture so that you can easily cut-and-paste content from different applications, such as Word, Powerpoint .. into NextSpeak - Mandarin TTS for speaking out.
- Closely integrate with NextOffice. Now you can simply drag the "NextSpeak - Mandarin TTS" icon from gallery into your presentation slide.
- Support user-defined pronunciation definition.
- Bundle with NextDict to facilitate you to search the word meanings in your document.
- Use SAPI 5 Interface. You can add your own SAPI compliant voice.

### NextSpeak - Mandarin TTS is comprised of 3 modules:

- NextSpeak - Mandarin TTS Program module including the NeoSpeech Lily-16 TTS engine.
- NextSpeak - Data Library containing sample documents which are to be installed under the user Application Data directory.
- NextDict multi-lingual dictionaries.
- NextSpeak Microsoft Office Add-in to allow you to easily access NextSpeak and NextDict with Word .

## 2. Installation of NextSpeak - Mandarin TTS Player

Installation of NextSpeak - Mandarin TTS TTS Player requires administrator rights. During the installation, an Arphic PinYin TrueType font will be copied to your system font directory, therefore, you need to have the administrator right in order to modify your system directory. After installation, you will run NextSpeak - Mandarin TTS with a normal (or limited) user account. Place your NextSpeak - Mandarin TTS CD in your CD-ROM drive. The autorun program should start automatically, otherwise, click the "My Computer" icon. Then click the icon representing your CD-ROM drive to open it. Locate the autorun program in the CD-ROM folder and double click on it to start it. (Fig. 2-1)

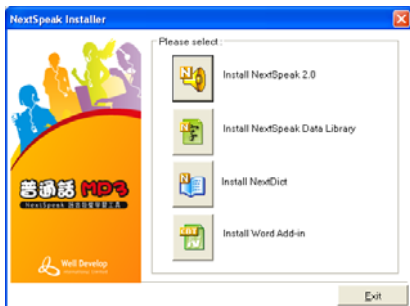


Fig. 2-1



Install NextSpeak - Mandarin TTS 2.0



Install NextSpeak Data Library



Install NextDict



Install Microsoft Office Add-in

### 2.1 Install NextSpeak - Mandarin TTS Program Module

1. In Fig. 2-1, select "Install NextSpeak - Mandarin TTS" option. In the pop-up "NextSpeak - Mandarin TTS Installer" screen (Fig. 2-2), press <Next> to continue.
2. Enter your personal information (Fig. 2-3) to personalize your copy of NextSpeak - Mandarin TTS. You can find your Support Serial Number (consists of 20 digits) on the back cover of this installation guide.



Fig. 2-2



Fig. 2-3

3. Select your desired language version to install (Fig. 2-4). You can view and input CJK characters even if you have installed an English version.
4. In the "NextSpeak - Mandarin TTS 2.0 Setup" screen, Study the license statements by scrolling through the whole document (Fig. 2-5), select "I accept the terms of the Agreement" and press <Next> to continue.



Fig. 2-4



Fig. 2-5

5. The Installer will then install and register the core components in your hard disk. This step usually takes 10 to 15 minutes. When it is done, press <Finish> to continue. (Fig. 2-6)
6. The last step is to register your copy of NextSpeak - Mandarin TTS. Select an option and press <Next> to continue. You will be entitled 90-day free telephone and email support service upon registration. (Fig. 2-7)

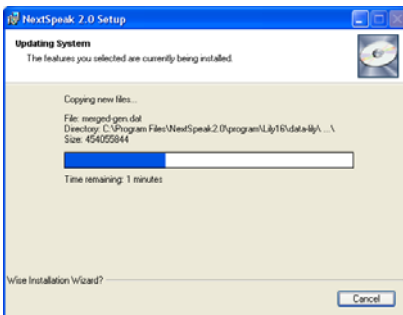


Fig. 2-6



Fig. 2-7

7. NextOffice is found in your PC, a dialog will then pop-up to prompt you to install Impress Extension, choose <OK> to install or <Cancel> to skip this step. (Fig 2-8)
8. If you have chosen <OK>, you will be prompted to delete your personal profile of NextOffice 9 in order for the Impress Extension to be effective. Press <OK> to continue. (Fig 2-9)
9. Impress Extension will be copied to the designed folder. Upon completion of installation, press <Finish> and restart your computer.



Fig. 2-8



Fig. 2-9

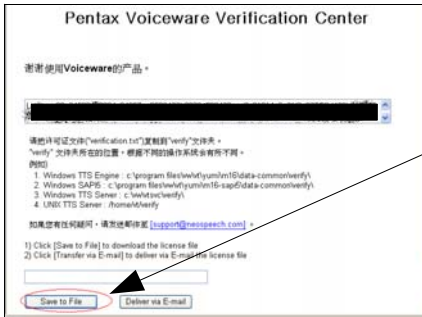
## 2.2 NeoSpeech Lily (Mandarin) End User License

After successfully installed <NextSpeak - Mandarin TTS>, you need to use the NeoSpeech CD-Key printed in the 3<sup>rd</sup> page of this manual to register for a valid NeoSpeech Lily (Mandarin) End User License.

### Acquiring a New License

Follow the following instructions to acquire a new license of NeoSpeech Lily (Mandarin) Voice.

1. Run the "NextSpeak - Mandarin TTS" program
2. Select "Help" -> Apply NeoSpeech Voice End User License"
3. Fill in the CD-Key from Page 3 of the User Manual, then click "Get License" to download the activation file (verification.txt).
4. Click "Next" to continue, and at the same time, please prepare your MAC address.
5. There are 2 methods for you to check your MAC address: Method 1: Select "Start" -> "Run" -> key in "cmd" -> "OK"
6. In the command prompt, enter "ipconfig /all" command, and then press enter. The "Physical Address" is the MAC address. Go back to the page, fill in the MAC address, then click the "Get License" button.
7. Method 2: Click the link of "Check Mac address - Only Win32 System" to install a program, when the program run, the MAC address field will be automatically filled. Notes: The program should be unzipped before use.



8

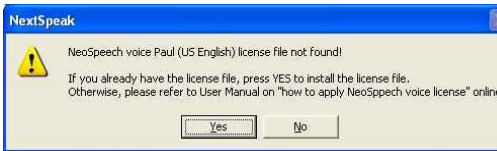
Lastly, click "Save to File" to download the license file (verification.txt).

Notes: Suggest to save it to desktop.

9

After the activation of the program, a message box would be popped up, click "Yes" to select the license file (verification.txt) that you saved before.

After that, the NeoSpeech Lily (Mandarin) End User License would be registered.




### 《 NextSpeak - Mandarin TTS 》

After the download, please place your "verification.txt" under the folder of:

C:\Program Files\NextSpeak2.0\program\

Lily16\data-common\verify

(\* Attention: the license file can only be redist:  verification 文字文件 , so we strongly recommended that you should backup the verification.txt file. )

### Viewing your License Information

1. Goto <http://verification.neospeech.com>
2. Enter your NeoSpeech CD-Key and click <View License Record> (If pop-up window gets blocked, allow pop-ups and retry.)

## 2.3 Install NextSpeak Data Library

NextSpeak - Mandarin TTS include sample text documents from public domain. There could be errata in the included documents. Therefore, text library will be installed separately per user. In case of necessity, you can modify your own copy of text library. Text library will be installed in the directory "Documents and Setting\<User>\Application Data\ NextSpeak - Mandarin TTS 2.0"

1. In Fig. 2-1, select "Install NextSpeak - Mandarin TTS Library" option. In the pop-up "NextSpeak - Mandarin TTS Library Setup" screen (Fig. 2-1), press <Next> to continue.
2. If you select "Custom" installation, you can select to install different libraries (Fig. 2-17) and select your desired installation directory. Press <Next> to accept the default settings or press <Browse> to select another installation directory.
3. The Installer will then install and register the text library in your hard disk . When it is done, press <Finish> to continue. (Fig 2-18) °

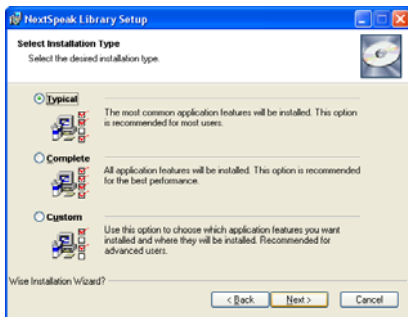


Fig. 2-17

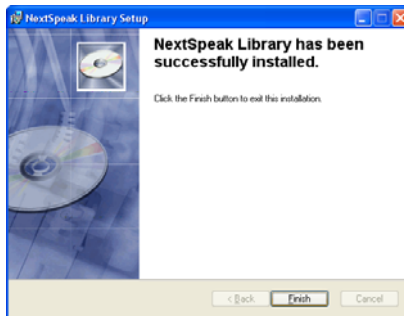


Fig. 2-18

## 2.4 Install NextDict Multi-lingual Dictionary

1. Fig. 2-1, select "Install NextDict " option. In the pop-up "NextDict 2.0 Setup" screen , press <Next> to continue.
2. Follow the instruction step by step. (Fig. 2-19)
3. The installer will copy the programs and data files to the destination directory and register its components. When it is done, press <Finish> to proceed to next step. (Fig. 2-20)

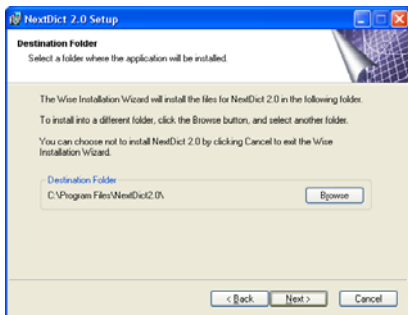


Fig. 2-19

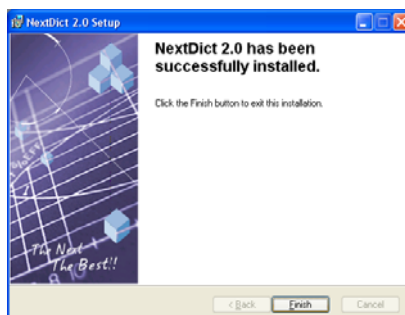


Fig. 2-20



## 2.5 Install Microsoft Office Add-in

1. In Fig. 2-1, select “Install Microsoft Office Add-in” option. In the pop-up “MSASetup” screen, press <Next> to continue.
2. The installer will copy the programs and data files to the destination directory and register its components. (Fig 2-21)

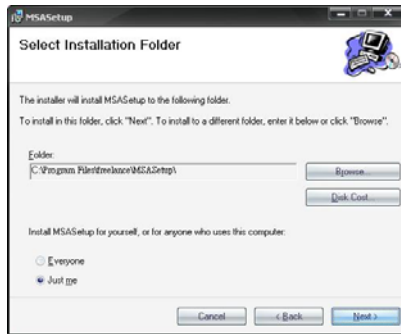


Fig.2-21

## 2.6 Uninstall NextSpeak - Mandarin TTS Program Module

1. In menu “Start” → “Settings” → “Control Panel”, select “Add/Remove Applications” option. (Fig. 2-22)
2. Then select “NextSpeak - Mandarin TTS 2.0” and press <Remove> to confirm.

## 2.7 Uninstall NextSpeak - Mandarin TTS Library

1. In menu “Start” → “Settings” → “Control Panel”, select “Add/Remove Applications” option.
2. Then select “NextSpeak - Mandarin TTS Library” and press <Remove> to confirm.

## 2.8 Uninstall NextDict Multi-lingual Dictionary

1. In menu “Start” → “Settings” → “Control Panel”, select “Add/Remove Applications” option.
2. Then select “NextDict 2.0” and press <Remove> to confirm.

## 2.9 Uninstall Microsoft Office Add-in

1. In menu “Start” → “Settings” → “Control Panel”, select “Add/Remove Applications” option. (Fig. 2-22)
2. Then select “MSASetup” and press <Remove> to confirm.



Fig. 2-22

### 3. NextSpeak - Mandarin TTS User Interface

#### 3.1 Large View Mode

To start NextSpeak - Mandarin TTS, select menu “Start” → “All Programs” → “NextSpeak - Mandarin TTS 2.0” → “NextSpeak - Mandarin TTS”. Large View mode shows all the NextSpeak - Mandarin TTS Panels. (Fig. 3-1) The following is a brief description.

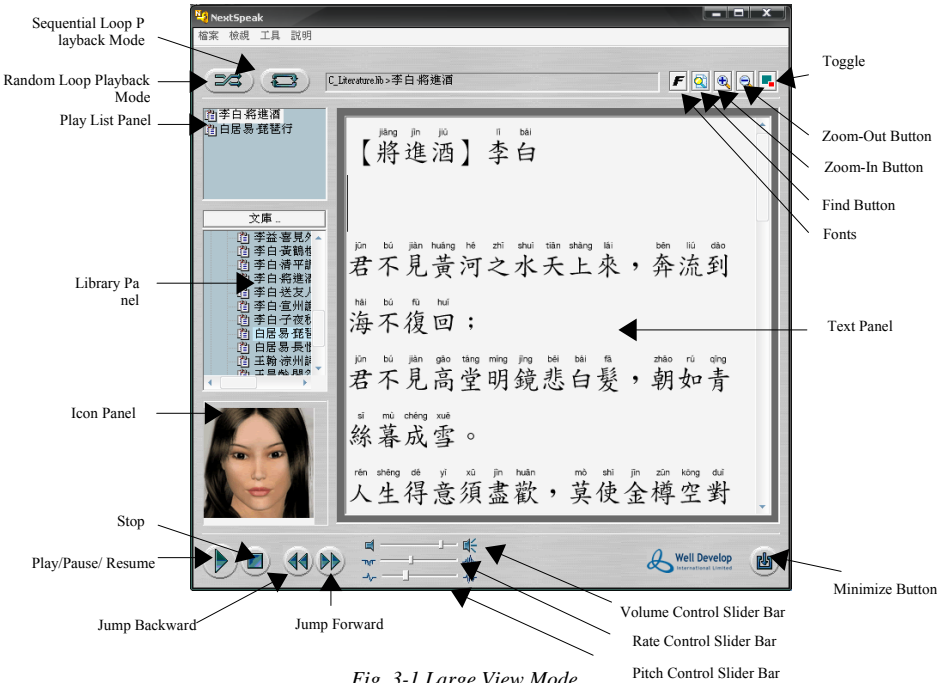


Fig. 3-1 Large View Mode

#### 3.2 Minimized Mode

Minimized mode is well suited for working with other application because its small size. (Fig. 3-2)

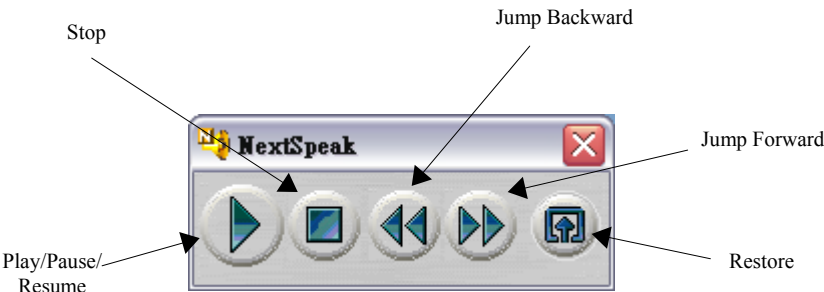


Fig. 3-2 Minimized Mode

UI	Description
Play List Panel	Contains play list items. Play list items can be playback using "Loop/Random Playback" mode. You can add new item to the current playback by double clicking an it or by selecting menu "File" → "Open" to insert existing document into play list.
Library Panel	Allow you to group contents into different categories, e.g., you can group your favorite poems into a category called "Poem". Library content can be a plain text document in different character encodings (Unicode, Big5, GB2312, ASCII) or a URL.
Icon Panel	Show different icon animation. If your selected voice support SAPI 5 feedback events, you can see the character's mouth movement during the pronunciation of the content. Note: not all SAPI 5 complaint voice supports feedback events.
Text Panel	Contains the current text content selected for playback.
Toogle Font	Use this button to toggle between 2 pre-defined fonts. One is usually for display CJK characters and should be assigned with a CJK typeface. Another is usually for displaying Roman characters and should be assigned with a Roman typeface.
Minimize Button	Click on this button to minimize NextSpeak - Mandarin TTS UI to a small floating panel. This mode is designed to support integration with NextOffice.
Zoom-In Button	Press this button to zoom-in the content in the text panel.
Zoom-Out Button	Press this button to zoom-out the content in the text panel.
Find Button	Press this button to locate a specified text in the current text panel.
Toggle	Press this button to toggle between Text Panel and the URL panel.
Play/Pause/Resume	Press this button to start speak out the content in the Text Panel. This is a multi-function button. If you press this button during speak out, the speaking will be paused. Press this button again will resume the speaking. The speaking of text content could be: <ol style="list-style-type: none"> <li>1. If text is highlighted, the highlighted content will be spoken out.</li> <li>2. If no text is highlighted, the speaking will start either from the beginning of the text panel or from current cursor position depending on the status of the checkbox "Always Start Speaking from beginning" in the NextSpeak - Mandarin TTS Setting Panel.</li> </ol>
Stop	Stop the speaking of the current content.
Jump Forward	This button applies only to "Sequential/Random" Loop Playback mode. Press this button will skip the speaking of the current document and jump to the next document.
Jump Backward	This button applies only to "Sequential/Random" Loop Playback mode. Press this button will skip the speaking of the current document and jump to the previous one.
Sequential Loop Playback Mode	Sequential Loop playback mode allow your to Loop playback the documents listed in the Play List Panel. Documents will be playback one by one in sequential order.
Random Loop Playback Mode	Random Loop Playback Mode allows you to loop playback the documents listed in the Play List Panel. Documents will be playback in random order.
Rate Control	Use this slider bar to adjust the speaking rate.
Volume Control	Use this slider bar to adjust the speaking volume.
Pitch Control	Use this slider bar to adjust the speaking pitch. Note that not all voice support pitch control. If a selected voice does not support pitch control, change will be ignored.

### 3.3.1 Library Panel

Right click on an item under a category will pop up a menu. In the menu you can find option to:

- Insert new item
- Rename the item
- Delete the item
- Specify the encoding of the item.
- Insert the item into the playlist

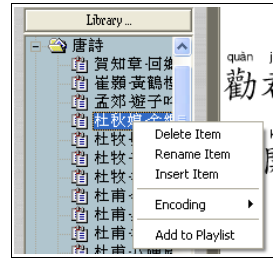


Fig. 3-3 Library Panel Menu

### 3.3.2 Playlist Panel

Right click on an item in the play list panel to popup a menu. In the menu you can select to:

- Move up the current item
- Move down the current item
- Remove the current item from the playlist
- Remove all items from the playlist

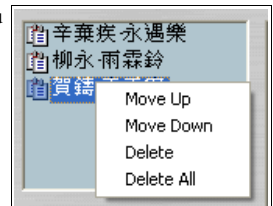


Fig. 3-4 Playlist Panel Menu

### 3.3.3 Icon Panel

Allows you to select different character icons.

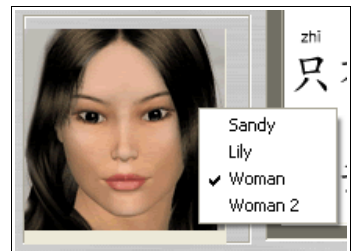


Fig. 3-5 Icon Panel Menu

## 4. NextSpeak - Mandarin TTS Settings

NextSpeak - Mandarin TTS provides sophisticated control on the playback (Fig. 4-1)



Fig. 4-1 Settings

<i>Function</i>	<i>Description</i>
Voice	Specify the default English voice
Chinese Voice	Specify the default Chinese voice
Chinese Font	Specify the default font for displaying the content in the Content Panel. It is usually set to a Chinese typeface for displaying CJK characters.
Alternative Font	Specify another default font for displaying the content in the Content Panel. It is usually set to a Roman typeface or displaying Roman characters.
Always use Native Language	Specify the desired treatment when speaking out content with mix English and Chinese. Chinese voice comes with support on English but they usually sound strange in tone to native English speaker but appear more consistent. Check this checkbox to force playback of English content using the default English voice.
Line Break Interpretation	You can specify how to interpret a line break by adding N seconds of silence. This will make the content more pleasant when being spoken out.
Rate Control	Controls the default speaking rate.
Volume Control	Controls the default speaking volume.
Pitch Control	Controls the default speaking pitch. Note that not all voices support pitch control.
Default UI language	You can set the default UI of NextSpeak to English, Chinese Traditional or Chinese Simplified. Or you can set NextSpeak to follow the UI setting of NextOffice. In this case, check the "Follow NextOffice UI setting" checkbox
Follow NextOffice UI Setting	Ask NextSpeak to use NextOffice's default UI language settings.
Always start speaking from the beginning	Specify when the "Play" button is pressed whether to start speaking from the beginning of the Text Panel or the current cursor position.
Clipboard Capture	Enable or disable Clipboard Capture. Clipboard Capture allows NextSpeak to be registered as a Clipboard Viewer and listens to the clipboard events.
Automatic Close at N seconds	If "Clipboard Capture" is enabled and the filtering criteria is satisfied, the user will be prompted whether to append or insert the clipboard content into the Text Panel.
Ignore content less than N characters	If "Clipboard Capture" is enabled, this filtering criteria allows you to ignore clipboard cut-and-paste of small amount of content. Cut-and-paste of small amount of content is usually common during editing of a document .

## 5. NextSpeak - Mandarin TTS Menu

### 5.1 File Menu

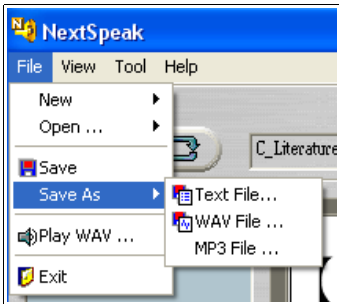


Fig. 5-1 File Menu



Fig. 5-2 View Menu

<i>Menu</i>	<i>Description</i>
New →Text	Clear the Text Panel and ready for new input
New →Library	Create a new text library
Open →Text	Open an existing text document. The document will be automatically inserted into Play List Panel
Open →Library	Open an existing library. The library will be automatically loaded into the Library Panel.
Open →URL	Allow you to specify an URL and open it in the content panel.
Save	Save the current document in Text Panel
Save As Text	Save the current document as another text file.
Save As Wav	Save the current document as Wav. Note that "Save As Wav" will cause the NextSpeak - Mandarin TTS engine to voice synthesis the content and could take quite a long time.
Save As MP3	Save the current document as MP3. Note that "Save As MP3" will cause the NextSpeak - Mandarin TTS engine to voice synthesis the content and could take quite a long time. We are using LAME encoder to do the MP3 encoding.
Exit	Quit the NextSpeak - Mandarin TTS Application.

### 5.2 View Menu

<i>Menu</i>	<i>Description</i>
Windows Layout	Allow you to adjust the layout of the panel, show/hide some panels.
Character	Allow you to select different character icons.
Zoom-In	Zoom-in the content in the Text Panel
Zoom-Out	Zoom-out the content in the Text Panel.

5.3 Tool Menu



Fig. 5-3 Tool Menu

Menu	Description
Settings	Adjust the default setting of NextSpeak - Mandarin TTS. See Section 2 "Setting Panel" for detail.
Playground Music	Check to disable background music on playback or select the desired background music.
Speak Out Mode	<p>The "Speech" mode will speak out the content in the Text Panel in a tone emulating a human speech.</p> <p>The "Word by Word" mode is designed for language learning where the audience would like to listen carefully how each word is pronounced.</p> <p>Note: some voices may not support the "Word by Word" mode.</p>
Clipboard Capture	Enable or disable clipboard capture. See Section 2 "Settings Panel" for detail.

5.4 Help Menu

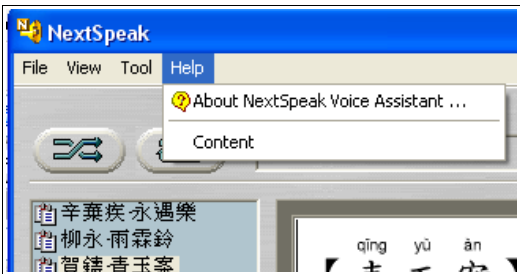


Fig. 5-4 Help Menu

Menu	Description
Help	Show the product information of NextSpeak - Mandarin TTS
Content	Display the help content of NextSpeak - Mandarin TTS

# 6. Library Management

You can group your frequently access text document into NextSpeak - Mandarin TTS library. Each library contains an indexing file with extension \*.lib and and the corresponding text documents. NextSpeak - Mandarin TTS comes with 4 text libraries:

Library Name	Description	Language
bible_new.lib	New Testament	Chinese Traditional
bible_old.lib	Old Testament	Chinese Traditional
c_literature	Chinese Literature	Chinese Traditional
Speech	English Famous Speeches	English

To open an existing library, select menu "File" → "Open" → "Library"

## 6.1 Create a New Library

You can create your own library. Documents in library must be pure text with file extension(\*.txt). For example, you can group poems in a folder named as "Tong" and others from the Song Dynasty in a folder named as "Song". First create a folder called "Chinese Literature", in "Chinese Literature" create the "Tong" folder and "Song" folder, copy the corresponding poems into the two folders. Finally, in NextSpeak - Mandarin TTS, select menu "New" → "Library" (Fig. 6-1), in the pop-up dialog, press the <Pick> button to pick the previously created "Chinese Literature" folder and then enter a valid library file name, such as "c\_literature" and press <OK>. A new library named as "c\_literature" will be created and automatically loaded into the library panel. You can use Notepad on any text editor to examine the content of the library file (Fig. 6-2)

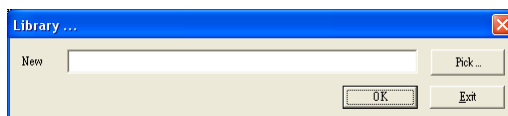


Fig. 6-1

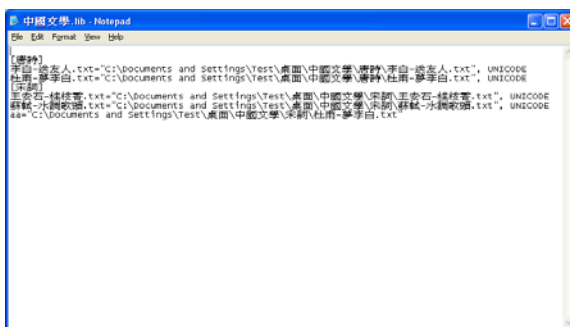


Fig.6-2



## 7. Playback of Library Content

NextSpeak - Mandarin TTS comes with several libraries including New Testament, Old Testament, Chinese Literature (All in Chinese Traditional). To listen to the library content, first select and open the desired library. For example, if you would like to listen to the New Testament library, follow the following steps:

1. Select menu "File" → "Open" → "Library" (Fig. 7-1)
2. In the "Open" dialog box, select bible\_new.lib representing the New Testament Library, then press <OK> (Fig. 7-2)

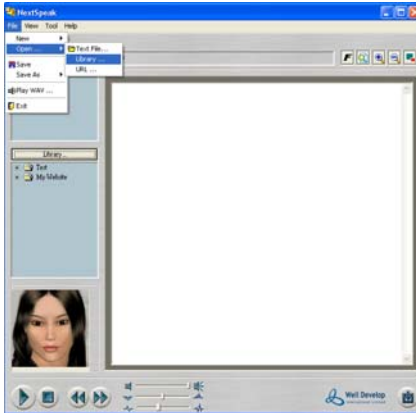


Fig. 7-1



Fig. 7-2

3. The Library Panel on the left will display the available chapters. Simply select the chapter you are interested and double click on it to load its content. Then press the <Play> button to start playing its content. You can highlight a section of text and then right click to pop-up a menu. In the pop-up menu, select "Speak" to play only the highlighted content. (Fig. 7-3)
4. You can optionally select to play the content starting from the current cursor position instead of always from the beginning. Select menu "Tools" → "Setting" to open the NextSpeak - Mandarin TTS Configuration dialog and uncheck the "Always starts from the beginning" checkbox. See Section "NextSpeak - Mandarin TTS Configuration" for detail. (Fig. 7-4)



Fig. 7-3

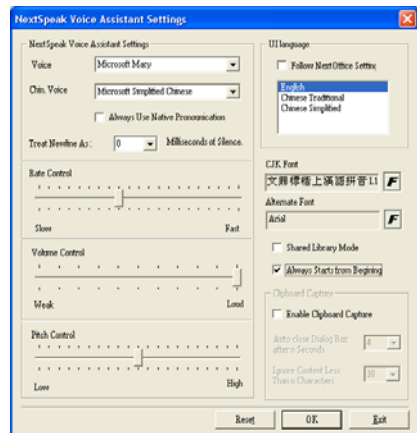


Fig. 7-4

## 8. Play Text Content

NextSpeak - Mandarin TTS comes with a few libraries. Library is a collection of text documents. Users can simply load the documents and start get familiar with the functions of NextSpeak - Mandarin TTS. Play Text Content is very similar to Play Library. The detail procedure is depicted as follows:

1. Select menu "File" → "Open" → "Text" (Fig. 8-1)
2. In the Open dialog, pick your desired text document and press <Open>
3. Then the selected file will be loaded into the Content Panel and a reference of it will be inserted into the Playlist Panel (Fig. 8-2)

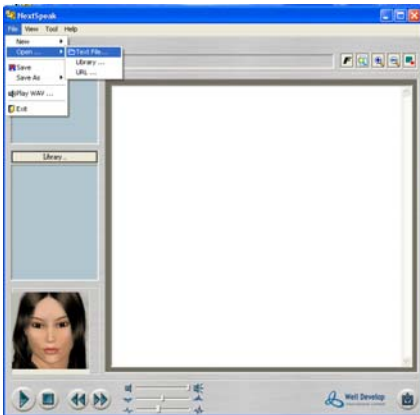


Fig. 8-1

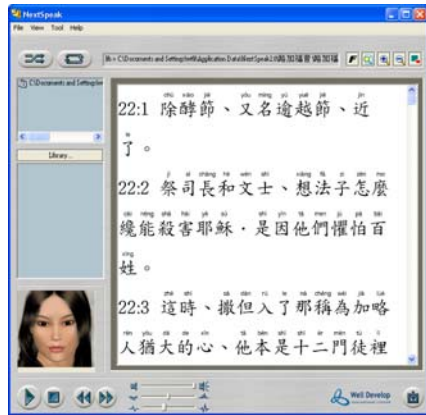


Fig. 8-2

Then, the way to playback text content is the same as that described in "Playback library".

## 9. NextDict Multi-lingual Dictionary

If you have installed NextDict, you can use NextDict (Fig. 9-2) to lookup the words displayed in your content panel. First, select the desired words, then right click and in the pop-up menu, select "Dictionary" (Fig. 9-1)



Fig. 9-1

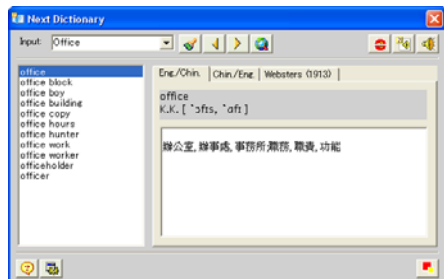


Fig. 9-2

NextDict multi-lingual dictionaries include "English/Chinese", "Chinese/English" and "English/English" dictionaries.

## 9.1 NextDict User Interface

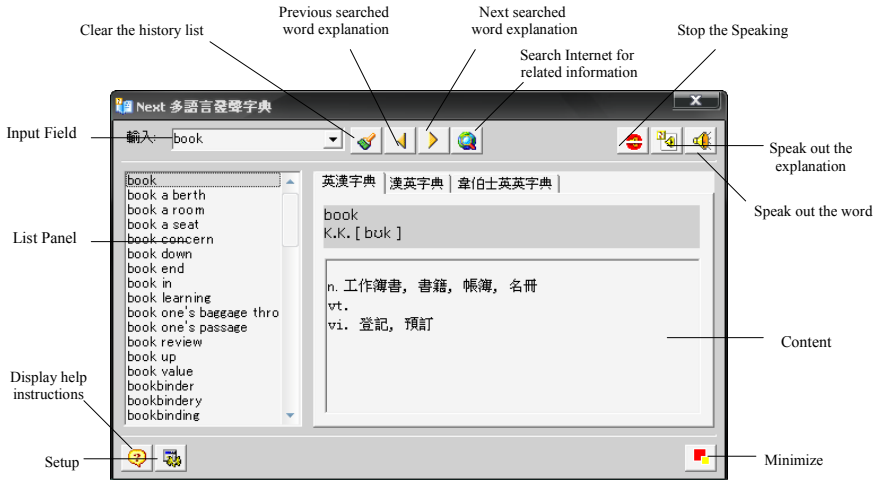


Fig. 9-3 NextDict User Interface

<i>UI</i>	<i>Description</i>
Input Field	Enter the word you desired in this field. NextDict support * and ? Wild character.
Clear Search History	The input field contains a pull down menu recording all your previous valid search. To clear this history list, press this button.
Display Previous search	Traverse the history list and display the previous valid search result.
Display Next Search	Traverse the history list and display the next valid search result.
Search Internet	Search Internet for information related to the input word(s)
Stop	Stop any outstanding TTS operation
Speak Content	Speak out the explanation of the lookup word(s)
Speak	Speak out the word(s)
List Panel	Display the first 50 word or phrase matching the input entered in the Input Field.
Content	Display the content of the lookup word(s) or phrase.
Minimize	Minimize the NextDict as an icon in the systray
Settings	Allow you to configure the TTS settings, such as volume, rate and pitch
Display Help	Display the phonetic symbols guide

## 10. Playback of Websites

Operating procedure for Speaking out of website content will be slightly different from that of a text file. First of all, you have to add a website into the library. (Fig. 10-1)



Fig. 10-1 Playback Website

To speak out a text section, simply highlight the section, right click to pop-up a menu. In the pop-up menu, select "Speak". (Fig. 10-2)



Fig. 10-2 Select Text to Speak

The selected content will then be copied to the text panel for speaking out. You can use the "Toggle" button to toggle between Browser View and "Text Panel" View.

## 11. User Defined Pronunciation

User Defined Dictionary Interface is only available in Chinese. If you have encountered words which the TTS engine of NextSpeak - Mandarin TTS does not know how to pronounce it, you can teach the engine by defining the pronunciation for the words. In the following example, we will teach you how to define the pronunciation for the word “嫋嫋” (Fig. 11-1) :

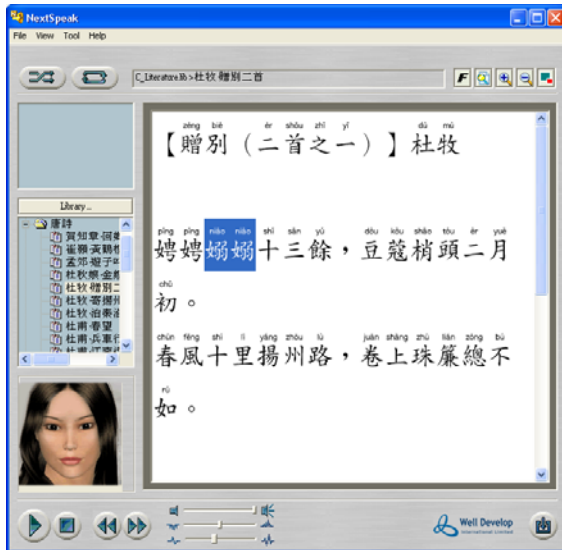


Fig. 11-1

To start “User Defined Dictionary”, select menu “Start” → “All Programs” → “NextSpeak - Mandarin TTS 2.0” → “User Defined Dictionary”.

When you open the "User Defined Dictionary", the "User Defined Dictionary" dialog box will pop up. You can add new definition, modify existing definition or delete existing definition. (Fig. 11-2)

1. Press "Open" to open the default userdict\_chi.csv dictionary.
2. Press "New" to add a new pronunciation definition for a new phrase. (Fig. 11-3)
3. In the Phrase input field, enter the Chinese word “嫋嫋”，and then input the pronunciation definition of this phrase. Pick <Pin Yin> to popup the <Pin Yin> input dialog, you can select vowel, consonants and the tone from the dialog. In our example, select the consonant "n" and the vowel "iao" and tone "2". You can listen the your definition by press the "Read" button. Finally, press <OK> to confirm.
4. The newly added pronunciation definition will appear in the list box on the left. If necessary, you can modify its definition or delete it.
5. Finally, press "Save" to save the change to your current dictionary.



Fig. 11-2



Fig. 11-3

<i>UI</i>	<i>Description</i>
Open	Press to open an existing dictionary. By default, the userdict_chi.csv is opened. All user defined pronunciation definition is stored in a dictionary.
Save	Store the changes to the current open dictionary
Save As	Store the current dictionary under another name
Close	Close current dictionary
Add New Phrase	Create a new pronunciation definition of a new phrase.
Modify Phrase	Modify the pronunciation definition of the selected phrase.
Read Phrase	Listen to the pronunciation definition of the selected phrase.
Delete Phrase	Delete the pronunciation definition of the selected phrase.

## 12. Using NextSpeak - Mandarin TTS in Impress

NextSpeak - Mandarin TTS provides an easy way for you to work with Impress. By drag and drop some pre-installed clipart, you can easily enable your current slide to speak out its content or notes content. Detail procedure is depicted as follows:

### 12.1 Speak Presentation Content

1. Open your presentation and select "Gallery" and select "Impress Extension" theme.
2. In the "Impress Extension" theme, you can find 4 different icons representing Impress Extension. Two icons are for color presentation, two are designed for black and white presentation. You can drag the icon representing "Impress Extension – Speak Content" into your slide (Fig.12-1)
3. Then, when you press "Impress Extension – Speak Content" icon in your slide.

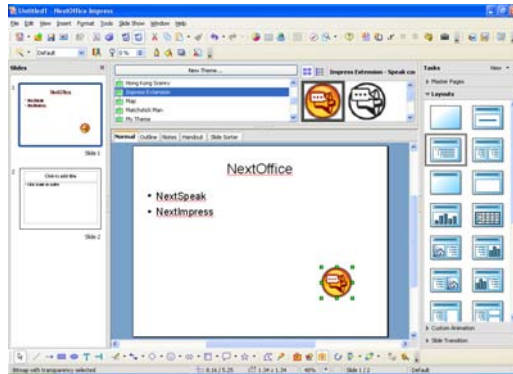


Fig. 12-1

### 12.2 Speak Presentation Notes

1. Open your presentation and select "Gallery" and select "Impress Extension" theme.
2. In the "Impress Extension" theme, you can find 4 different icons representing Impress Extension. Two icons are for color presentation, two are designed for black and white presentation. You can drag the icon representing "Impress Extension – Speak Notes" into your slide (Fig. 12-2)
3. Then, when you press "Impress Extension – Speak Notes" icon in your slide

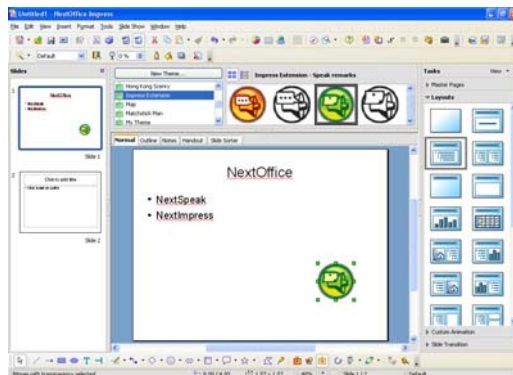


Fig. 12-2

### 13. Using NextSpeak - Mandarin TTS in NextOffice

You can use NextSpeak - Mandarin TTS with NextOffice Writer, Calc, Impress and Draw. You can find the <Speak> icon in your NextOffice toolbar. (Fig. 13-1)



Fig. 13-1

When NextSpeak - Mandarin TTS is first started, the TTS engine will be loaded into memory which could take a few seconds. Then the highlighted text in your NextOffice document will be submitted to NextSpeak - Mandarin TTS for playback. (Fig. 13-2)

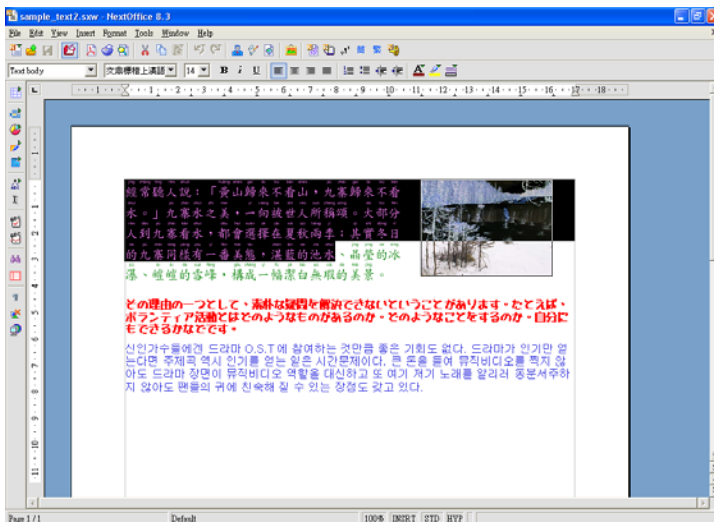


Fig. 13-2



## 14. Using NextSpeak - Mandarin TTS with Microsoft Office

You can use the "Clipboard Capture" function of NextSpeak - Mandarin TTS with applications like Word、Excel、PowerPoint. When working with MS Office, if you would like to have NextSpeak - Mandarin TTS speak out some of the content in your MS Office document, you can enable the "Clipboard Capture" function. The following is an example:

1. In NextSpeak - Mandarin TTS, select menu "Tool". Check "Clipboard Capture" or you can enable "Clipboard Capture" in menu "Tool" → "Settings". Check "Clipboard Capture" and press <OK> (Fig. 14-1)
2. Open the Microsoft Word document which you would like to work on, select the desired text and then menu "Edit" → "Copy" (Fig.14-2)



Fig. 14-1

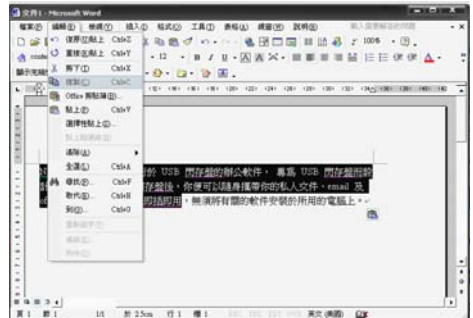


Fig. 14-2

3. Then the "Clipboard Capture" dialog pops up. You are prompted to "Insert" or "Replace" the content in the Content Panel with your clipboard content. Select "Insert" to insert the clipboard content at the current cursor position or "Replace" to replace the whole content with the clipboard content. If you choose <Cancel> or do not respond within the specified period, the clipboard action will be canceled. (Fig. 14-3)
4. Using "Replace" selection as an example, the text you copied from Word will now replace the content in your Content Panel. You can press the <Play> button to play the text content. (Fig. 14-4)



Fig.14-3



Fig.14-4

## 15.NextSpeak - Mandarin TTS Microsoft Office Add-in

After you have installed “Microsoft Office Add-in”, you can directly access NextSpeak - Mandarin TTS and NextDict in your Microsoft Office (Word, Excel and PowerPoint). To use NextSpeak - Mandarin TTS in your Word document:

1. First select the text (Fig. 15-1)
2. Press the “Speak” icon in the toolbar (Fig. 15-2)
3. NextSpeak - Mandarin TTS will be invoked and the selected text will be passed to it for speaking out. (Fig. 15-3)



Fig. 15-1

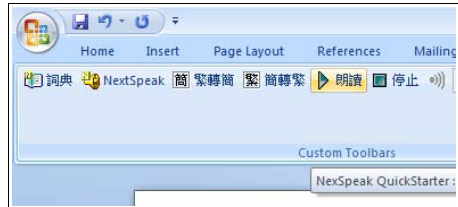


Fig. 15-2

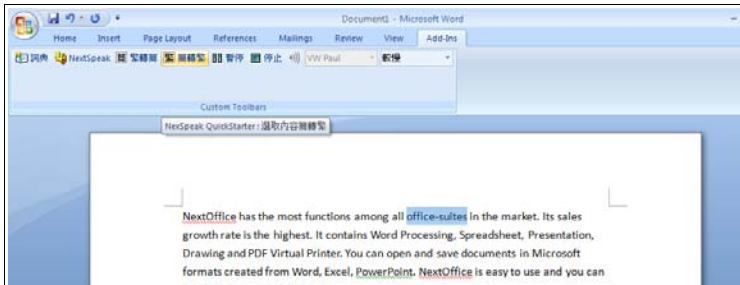


Fig. 15-3

To use NextDict in your Word document:

1. First select the text (Fig. 15-4)
2. Press the “Dict” icon in the toolbar (Fig. 15-5)
3. NextDict will be invoked and the selected text will be passed to it for searching.

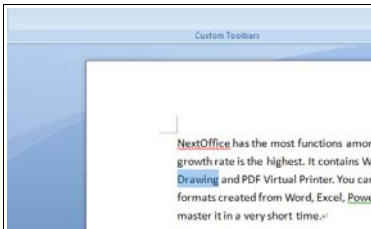


Fig. 15-4

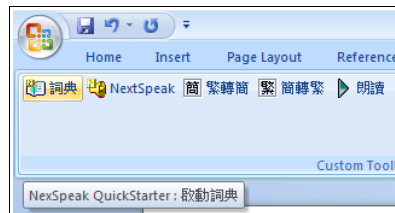


Fig. 15-5

The use of "Add-in" function is the same in working on Excel and PowerPoint.

## 16. LICENSE AGREEMENT

### **WELL DEVELOP INTERNATIONAL LIMITED END-USER LICENSE AGREEMENT TERMS.**

**Grant of License.** You are granted a non-exclusive right to use the Product (including any Error Corrections, standard enhancements or updates provided under Licensor's maintenance and support program) for internal purposes only at the designated location ("Designated Location"), in machine-readable form. This license specifically prohibits redistribution, transfer or resale of the Product.

**Limitations on Use.** You may not use, copy, modify, or distribute the Product or output of product (electronically or otherwise), or make any copy, adaptation, transcription, or merge any portion thereof, except as expressly authorized by Licensor in a separate written agreement signed by Licensor. You may not reverse assemble, reverse compile, or otherwise translate the Product. Your license may not be transferred, leased, assigned, or sub-licensed without Licensor's prior written consent, which will not be unreasonably withheld. If you copy or modify the Product in any way not expressly authorized by Licensor, your license is automatically terminated.

**Ownership.** Licensor shall have sole and exclusive ownership of the Product, in both object code and source code, all media and documentation relating to the Product, (including their development, or their operation, testing or use, and all reports and copies thereof), and all intellectual property rights associated therewith (including, without limitation, rights to copyrights, trade secrets, or know-how).

**Limited Warranty.** Licensor warrants for a period of thirty (90) days after Live Processing of the Product for your benefit alone, that the Product or Modified Product, as applicable, when operated with the equipment, in the configuration and in the operating environment specified by Licensor, will perform substantially in accordance with the end-user documentation. Licensor does not warrant that the Product or Modified Product will be error-free in all circumstances.

**Limitation on Warranty.** Licensor makes and you receive no warranties, express, implied, or statutory, or in any other provision of this agreement or any other communication; and Licensor specifically disclaims any warranty of merchantability or fitness for a particular purpose.

**Exclusion of Consequential Damages.** The cumulative liability of Licensor to you for any and all claims relating to the Product, and any services rendered under this Agreement, in contract, tort, or otherwise, shall not exceed the total amount of all License Fees paid to Licensor for the Product, or fees paid for services within the prior year. In no event shall Licensor be liable to you for any consequential, indirect, special, or incidental damages, even if Licensor has been advised of the possibility of such potential loss or damage. The foregoing limitation of liability and exclusion of certain damages shall apply regardless of the success or effectiveness of other remedies.

**NEOSPEECH INC.  
END-USER LICENSE AGREEMENT TERMS.**

**Grant of License.** You are granted a non-exclusive right to use the Product (including any Error Corrections, standard enhancements or updates provided under Licensor's maintenance and support program) for internal purposes only at the designated location ("Designated Location"), in machine-readable form. This license specifically prohibits redistribution, transfer or resale of the Product.

**Limitations on Use.** You may not use, copy, modify, or distribute the Product or output of product (electronically or otherwise), or make any copy, adaptation, transcription, or merge any portion thereof, except as expressly authorized by Licensor in a separate written agreement signed by Licensor. You may not reverse assemble, reverse compile, or otherwise translate the Product. Your license may not be transferred, leased, assigned, or sub-licensed without Licensor's prior written consent, which will not be unreasonably withheld. If you copy or modify the Product in any way not expressly authorized by Licensor, your license is automatically terminated.

**Ownership.** Licensor shall have sole and exclusive ownership of the Product, in both object code and source code, all media and documentation relating to the Product, (including their development, or their operation, testing or use, and all reports and copies thereof), and all intellectual property rights associated therewith (including, without limitation, rights to copyrights, trade secrets, or know-how).

**Limited Warranty.** Licensor warrants for a period of thirty (30) days after Live Processing of the Product for your benefit alone, that the Product or Modified Product, as applicable, when operated with the equipment, in the configuration and in the operating environment specified by Licensor, will perform substantially in accordance with the end-user documentation. Licensor does not warrant that the Product or Modified Product will be error-free in all circumstances. As your exclusive remedy for any defect or Material Error in the Product or Modified Product or its media covered by such warranty, and as Licensor's entire liability in contract, tort, or otherwise, Licensor agrees to correct such Material Error or defect at Licensor's facility by issuing corrected instructions, a restriction, or a bypass. If Licensor is unable to correct such defect or Material Error after a reasonable opportunity Licensor shall refund the License Fees paid for such Product or Modified Product. However, Licensor is not responsible for any defect or Material Error not reported during the warranty period or any defect or Material Error in a Product or Modified Product you have modified, misused, or damaged.

**Limitation on Warranty.** Licensor makes and you receive no warranties, express, implied, or statutory, or in any other provision of this agreement or any other communication; and Licensor specifically disclaims any warranty of merchantability or fitness for a particular purpose

**Exclusion of Consequential Damages.** The cumulative liability of Licensor to you for any and all claims relating to the Product, and any services rendered under this Agreement, in contract, tort, or otherwise, shall not exceed the total amount of all License Fees paid to Licensor for the Product, or fees paid for services within the prior year. In no event shall Licensor be liable to you for any consequential, indirect, special, or incidental damages, even if Licensor has been advised of the possibility of such potential loss or damage. The foregoing limitation of liability and exclusion of certain damages shall apply regardless of the success or effectiveness of other remedies.

"Confidential Information" means any data or information, oral or written, treated as confidential that relates to either party's past, present, or future research, development or business activities, including any unannounced products and service(s), and including any information relating to services, developments, inventions, processes, plans, financial information, customer lists, forecasts, and projections. Confidential Information shall also include the terms of this Agreement. Notwithstanding the foregoing, Confidential Information shall not be deemed to include information that:

- 1) is publicly available or in the public domain at the time disclosed;
- 2) is or becomes publicly available or enters the public domain through no fault of the party receiving such information;
- 3) is rightfully communicated to the recipient by persons not bound by confidentiality obligations with respect thereto;
- 4) is already in the recipient's possession free of any confidentiality obligations with respect thereto at the time of disclosure;
- 5) is independently developed by the recipient; or
- 6) is approved for release or disclosure by the disclosing party without restriction.