





User Manual

Thank you for purchasing our products. For your convenience, please carefully read the user's manual and warranty book before using this product.

Safety

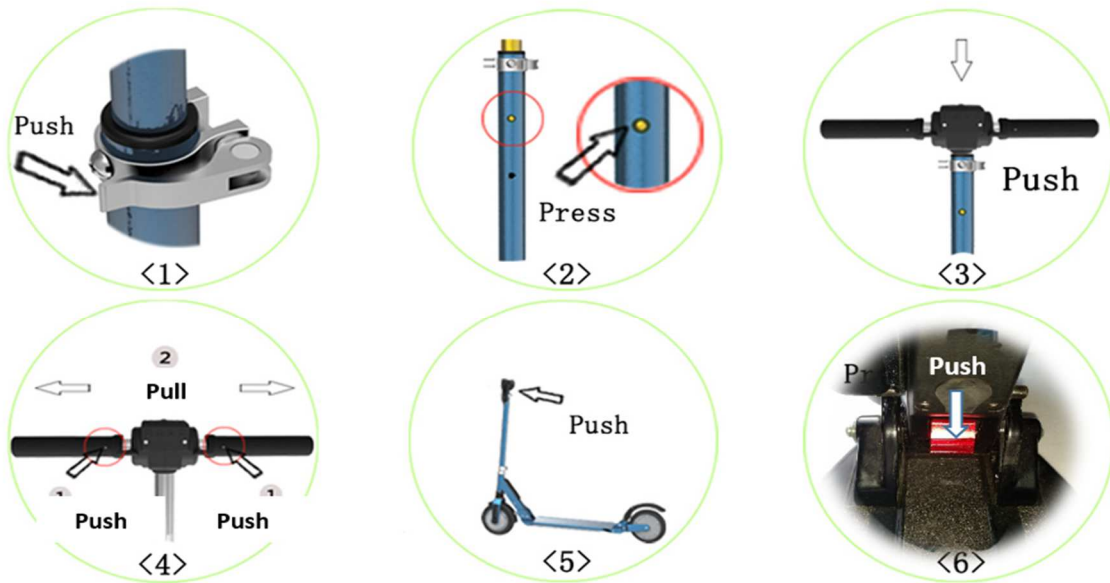
1. The product is for adults only, limited one adult, please do not carry two adults at the same time. Prohibit use by minors.
2. Please wear your safety helmet and other protective equipment when riding.
3. Do not ride in traffic lane or unsafe and violate local regulations place.
4. Please exercise in broad areas, and ride after skilled manipulation, do not ride in traffic lane.
5. Do not make any dangerous actions when riding or riding with one hand. Keep your feet on the scooter.
6. Do not attempt to across the stairs which above 3 cm directly; it may overturn the scooter causing injury or damage. For less than 3 cm step should try to avoid, too.
7. The scooter's highest speed is 20km/h. Please try to avoid using at night, if needed, please limit the speed within 15km/h or less and turn on headlight.
8. Do not use the scooter when the temperature lower than -5 °C.
9. Please slow down or get off when riding in rough or poor road conditions.
10. Do not ride the scooter in oil or ice surface terrain.
11. Please adjust the height of handlebar to the appropriate location according to your height to ensure riding safety.
12. Do not immerse the scooter in the water with the depth of 4 cm or directly injected by the water to avoid damage of the electrical part of the vehicle.
13. Please try to avoid riding in bad weather such as heavy rain and high winds to protect it from unnecessary factors that cause unnecessary harm.

Product

1、 Use-Unfold and Fold



a. Fold/ Illustration



1 Use-Unfold and Fold

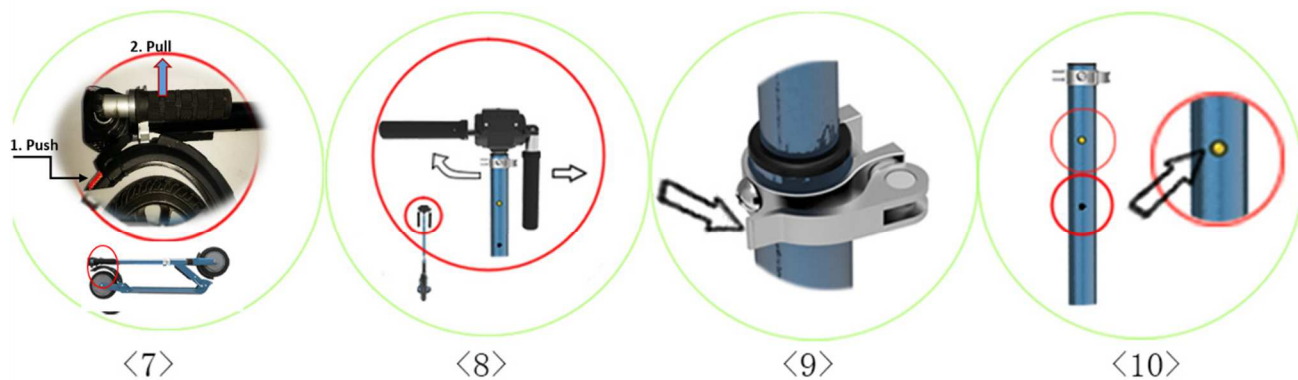
a. Fold/ Illustration

1. Shown<1>, open the lockstitch according to the arrow direction
2. Shown<2>, press the T conduit pinball (in the red circle), press the handlebar to the location shown in<3>at the same time, then lock the lockstitch to the original place shown in<1>.
3. Hold the handlebar with both hands, press the pinball (in the red circle) down firmly as shown in <4>. Hold them downward and it will be like Pull out the handlebar to the maximum according to the arrow direction shown

Figure<4>, then (B).

4. Push the handlebar forward, press or stamp the silvery white folding wrench according to the direction shown in Figure<6> at the same time. It will be fold after that shown as C.

b. Unfold/Illustration



1. Shown<7>, push the silver white folding wrench to expand the body and push forward the grip at the same time to make the sustain hook plate back to place.
2. Shown<8>, push the handlebar according to the arrow direction and then the handlebar will back automatically.
3. Shown<9>, push the lockstitch according to the arrow direction. There are two levels for you to adjust the handlebar height. The height limiting hole was shown in<10>. (Press the T conduit pinball if it pop out when adjust the height). Lock the lockstitch back after adjustment.

Operation

1 Introduction of Handlebar parts.



1 Thumb Electronic Magnetic Brake

2 Horn Button

3 Light Button

4 Setting Button

5 On-Off Button

6 Throttle

7 Handlebar Fold Buttons



2 Operating Instructions

a ON/OFF <5>

Press the switch, and the display lights indicate power on. It will turn off after unused for 3minutes.

b Speed control<6>

Press the right thumb accelerator to control the speed (1-20km/h).

c Braking Control <1>

Press the left thumb electronic magnetic brake. The greater angle you press, the greater braking force will be.

d Horn<3>

Turn on the power, press the horn button and it will hoot.

e LED Headlight

Press the LED headlight button when need and there will be a sign in display indicates the light is turn on. Press the button again when you do not need the light.

f Mileage Show

When power off, it shows time.

When power on, it displays three modes: total, trip and time. You can press the mode button to change it.

When it displays the 'trip' mode, press the setting button for 3 seconds and it will clear the trip.(Single stroke accumulated more than 100 belongs to 100)

g Emergency

Emergency, stamp the rear foot brake can simultaneously achieve front electronic magnetic brake and rear wheel friction brake; under normal circumstances, please do not use the emergency brake at high speed to avoid the wheel damage and the company shall not be responsible for this damage. Please repair it for pay.

3 Display Factory Setting

Press setting button and mode button at the same time for 3 seconds, four numbers will flash at the bottom right of display. Press the setting button to change the number location and press the mode button to change the number from 0-9. Set the number 0624 according to this method (front wheel perimeter is 0624mm). After this, press the setting button again and the sign 'km/h' will flash, press the mode button to change 'm/h' to 'km/h'. Press the setting button at last and the settings will be finished.



8 Light

9 Speed control

10 Battery Level

13 Temperature

11 and 12 Tripe or totally driven kilometers

14 Percent of battery level

Riding Operation

Ready



- 1 Choose a suitable venue for riding.
- 2 Expand the scooter in accordance with the description.
- 3 Adjust the T-pipe to the suitable height according to your height.

Start

- 1 Press the power button to turn on the power
- 2 Stand one foot on the scooter and leave another foot on the ground.
- 3 Gently press down on the right thumb accelerator, the scooter will immediately move forward slowly. Place the foot which is on the floor on the pedal after smooth riding. Press the right thumb accelerator, the greater the angle you press, the faster it will be.

Brake

1. Under normal circumstances, pressing the left thumb electronic magnetic brake, the scooter will immediately de-energized and then brake. The greater the angle you press, the greater the braking force will be.
- 2 Emergency, stamp the rear foot brake can simultaneously achieve electronic magnetic front brake and rear wheel friction brake; under normal circumstances, please do not use the emergency brake at high speed.



Battery and Charger

Each FLT electric scooter was equipped with a special lithium battery and special smart charger, accessories carried by each scooter have a dedicated number, please do not use the charger of other brands, the charger is not appropriate to other company supplied charger, too. If the battery or charger is damaged owing to these, the company shall not be responsible.

Battery

When you get the FLT electric scooter the first time, please charge the battery fully before using.

The battery can be charged at any time, in order to ensure that the battery has power, during which the battery will not charge for any damage.

Please charge the battery once every three months if stop using.

Due to water, collision, and other non-normal factors that lead to battery damage, which is not covered under warranty.

Charger

The company provides dedicated charger which has a charging protection function, when the battery is 100% charged, the charger will automatically stop charging.

Charging time is no more than 3 hours.

Due to water, collision, and other non-normal factors that lead to battery damage, which is not covered under warranty.

Charge Description

Open the charging hole rubber protective cover, put the charger connector into the charging hole.

Connect the charger plug into the power socket.

It means it is charging when charger light is red; charger light turns green when the battery is fully charged.



Maintenance

Lubricating

Please add a small amount of grease or lubricants to handle folded position every six months.

Please check scooter every three months weather the screws are loose, if yes screw it.

Battery

The lithium battery provided by company can be recharged at least 500 times, the normal use can reach more than 1,000 times. Every time after fully charged, the lithium battery needs to be replaced if the travel distance is too short.

Placement and daily care

Do not exposure the scooter under the sun for too long or other serious damp places.

Please keep the scooter clean.



General Troubleshooting

Checklist

When the products have any problems, please refer to the following methods.

1 LED display black screen

Reason: Exposure under the sun for too long.

Solution: Place it in shadow and it will return to normal after a period.

2 Values appeared do not fit the actual values

Reason: Parameters are set incorrectly or missing.

Solution: Please reset the display factory settings following the instructions

3 Digital display dim

Reason: Bad battery contacts or the battery is dead

Solution: Turn off the power then restart again, if the problem still occurs; please contact your local reseller.

When the product does not operate normally, check the following work is completed or not :

- a Turn on the battery
- b Check the battery via the display if there is electricity.
- c Left thumb electronic brake and rear brake in place.
- d All jacks and connectors holes linked accurately.

If the above steps are completed, the product still does not operate normally; please contact your local vendor or reseller.

Product Specification Sheet

	Item	FLT
Specifications	Overall Expand Size	940*1160*135mm
	Overall Fold Size	945*300*135mm
	Scooter Weight	10.5KG
Capability	Maximum load	100KG
	Top Speed	20km/h
	Grade Ability	15 degree slope
	Single Life	22km(varied from weight, wind speed, road conditions, temperature and other factors)
Battery parameters	Standard Voltage	24V
	Battery Type	Li-po Lithium Battery
	Battery Capacity	6.5AH
Motor parameters	Motor type	Brushless DC Motor
	Rated Output Power	250W
	Maximum Rotational Speed	700r/min
	Rated voltage	24V
	Maximum output torque	13.3N.m
Charger parameters	Output Voltage	220V
	Charging time	2.5-3h

Quality assurance

In normal use, if the parts of electric scooters got any problems listed in the following form during the warranty period, please contact the company or product distributor, we will provide a complete service within the warranty book.

Fitting	Quality problems	Warranty period	Service item
Motor	Under normal circumstances the motor can not be used	Two years	Free maintenance
Controller	Failures under normal use	Two years	Free maintenance
Charger	Failures under normal use	Two years	Free maintenance
Lithium Battery	Under normal circumstances can not be charged and discharged	Six months	Free maintenance
Display Accelerator overall device	Under natural conditions can not be used(Excluding the impact force and external damage)	Two years	Free maintenance
Body structure	Failures under normal use, such as deformation and fracture	Two years	Free maintenance

Note: Please follow the correct way to use our products, parts damages and other damages caused by abnormal use, the company shall not be responsible for.

In warranty period, if the malfunction and damage caused by following causes are not within the scope of the quality assurance:

- 1 Do not did the proper maintenance and repair in accordance with the instruction manual.
- 2 Use the electronic scooter for other purposes such as performing super dangerous actions, resulted damage or functional failure.

- 3 Disassemble or use of any external factory components
- 4 Wrong uses, traffic accidents or accidental collision damage the body and the body parts.
- 5 Stickers insufficiency, water and parts numbers do not match
- 6 Ride in the non-normal roads cause damage or failure to use
- 7 Operating rental of improper use or non-licensed
- 8 Scourge or irresistible reason



Copyright

Nothing from this manual may be copied, used, duplicated or reproduced without prior permission from:

CH.Wey Handelsvertretung

Importer for Switzerland

Telefon: +41 (0)76 429 69 69

Website: e-Kicki-scooter.ch / e-Kicki.li

E-mail: info@e-Kicki-scooter.ch