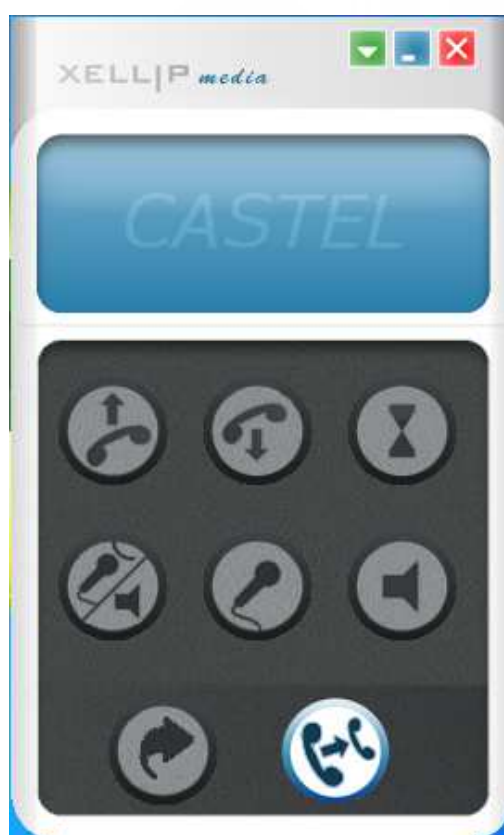


XELLIPMEDIA



VERSION

Version 2.3.0 2014/02/10

CONCERNED RANGES

- Xellip
- Maylis

SUMMARY

VERSION	1
Concerned ranges.....	1
SUMMARY	2
Introduction.....	3
Minimum hardware requirements.....	3
Installing XellipMedia	3
Configuration file	8
First use of XellipMedia.....	9
Launching the software – First notions.....	9
Introduction to the main window.....	9
Adding a SIP contact to the directory	10
Deleting a SIP contact.....	11
Application options	11
Using the application.....	16
Making a call.....	16
Managing an incoming call	17
Forwarding your station	17
When making or receiving a call	18
Interfacing MAYLIS	19
Configuration	19
Add Maylis equipment in address book.....	20
Remote forward activation.....	20
Interfacing with CASTELSUITE	20
Configuration	20

INTRODUCTION

XELLIPMedia is the software application of the XELLIP package, which can run on a PC and allows the user to establish audio/video communication between this PC and a SIP party, which may be a XELLIP gatekeeper, a XELLIP master station or any other client supporting the SIP protocol.

XELLIPMedia can also be used to run commands on the party side during communication involving stations of the XELLIP range (opening doors, etc.) .

XELLIPMedia offers the following functions:

- Making outgoing calls
- Answering incoming calls
- Managing muting during a call
- Managing call forwarding
- Managing call transferring
- Managing a directory of SIP contacts
- Registering with a SIP server
- Configuring multimedia peripherals
- Managing security
- Interfacing with CASTELSuite
- Interfacing with Maylis

XELLIPMedia, based on the SIP protocol, supports the following parameters:

- Audio codecs: G.711aLaw or PCMA , G.711uLaw or PCMU, GSM, Speex 8kHz, Speex 16kHz
- Video codecs: H.263, H.263+ 1998, MP4V-ES, H264, theora, x-snow
- DTMF code support (RFC 2833 and SIP INFO messages)

Important: **XELLIPMedia** supports a larger number of codecs than the stations of the XELLIP range, which support the following codecs:

Audio: PCMU, PCMA, GSM
Video: H263, H263 + 1998, H264

MINIMUM HARDWARE REQUIREMENTS

XELLIPMedia requires a PC with the following specifications:

- Processor:
 1. At least Intel Pentium III 1 Ghz or equivalent
 2. Optimum: Pentium 4 2.0 GHz or equivalent
- Memory: At least 512 MB of RAM,
- Hard disk space: 100 MB
- Operating system: Windows XP, Vista, Windows 7
- Network card
- Sound card
- Speakers
- Microphone (preferably external)

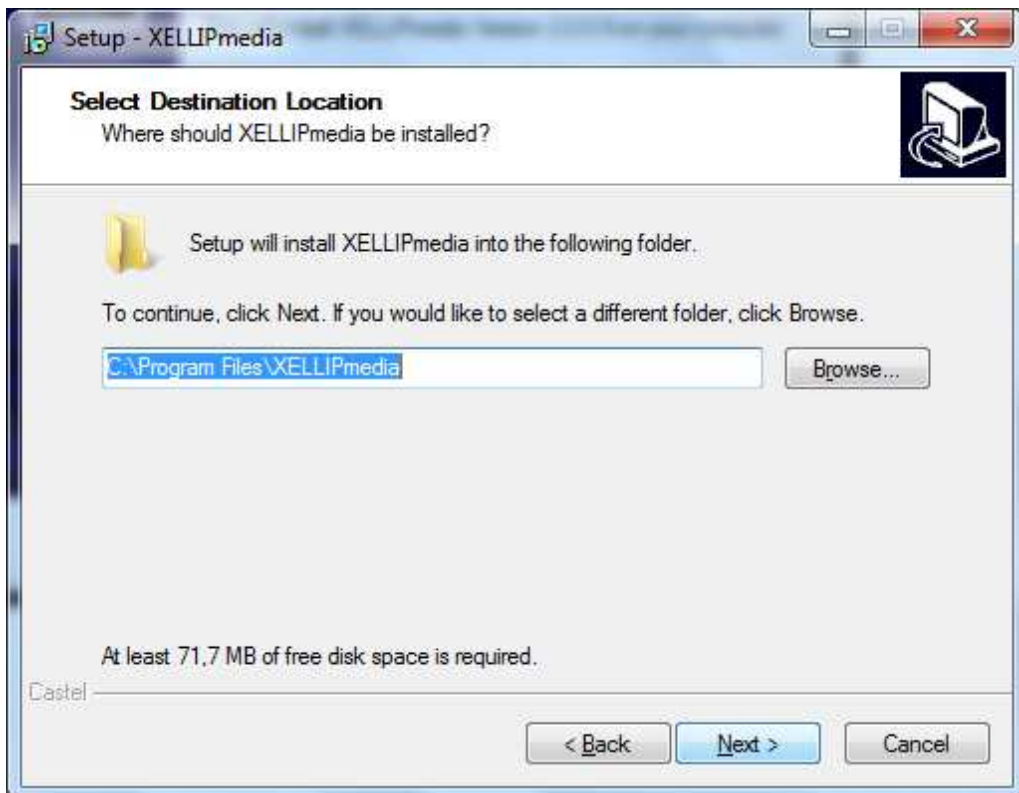
INSTALLING XELLIPMEDIA

XELLIPMedia can be installed from the installation CD-ROM:

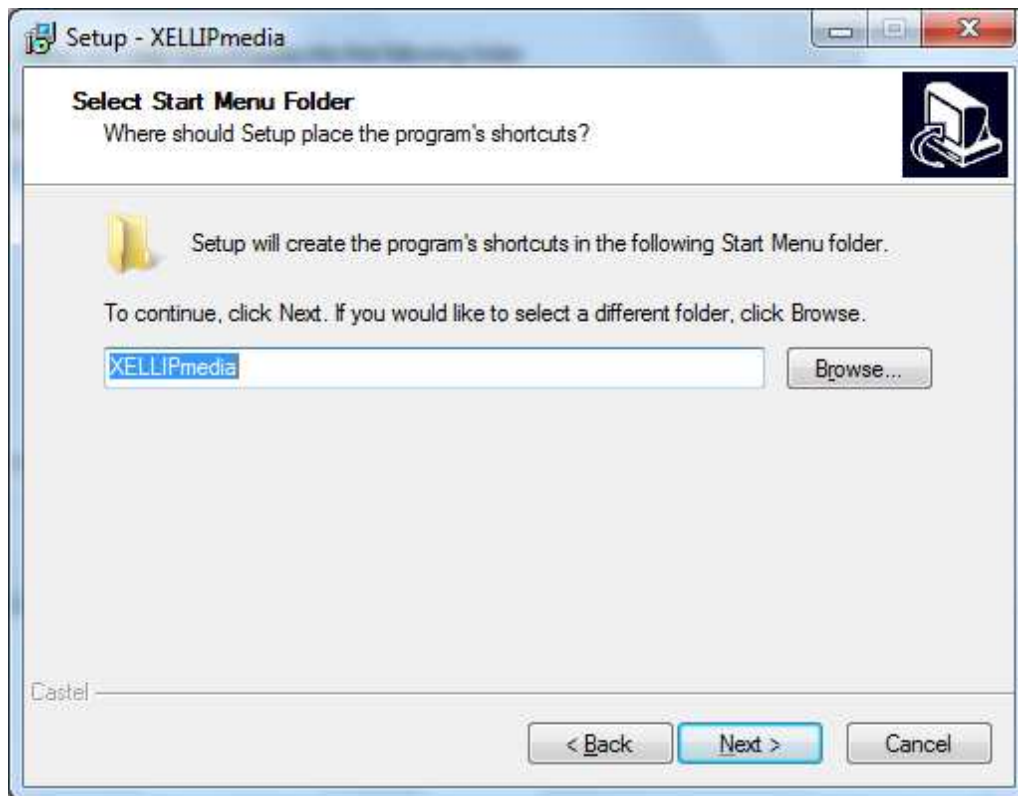
1. Run "**XELLIPmedia-Setup.exe**",



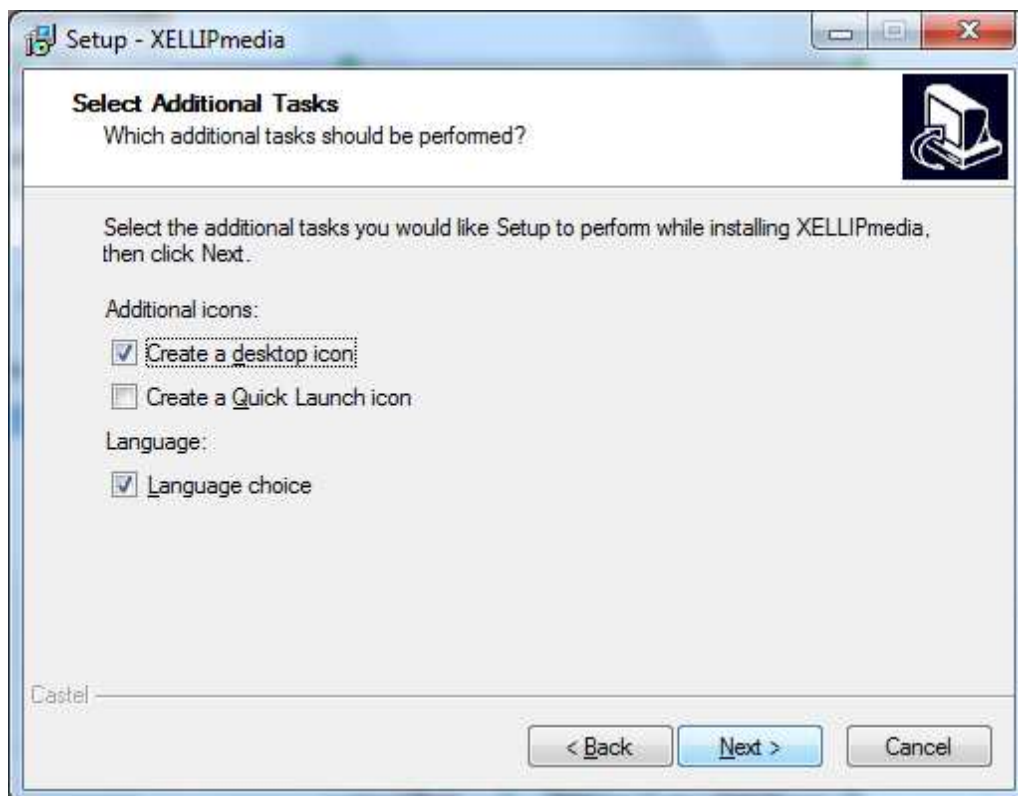
2. Click on "Next",



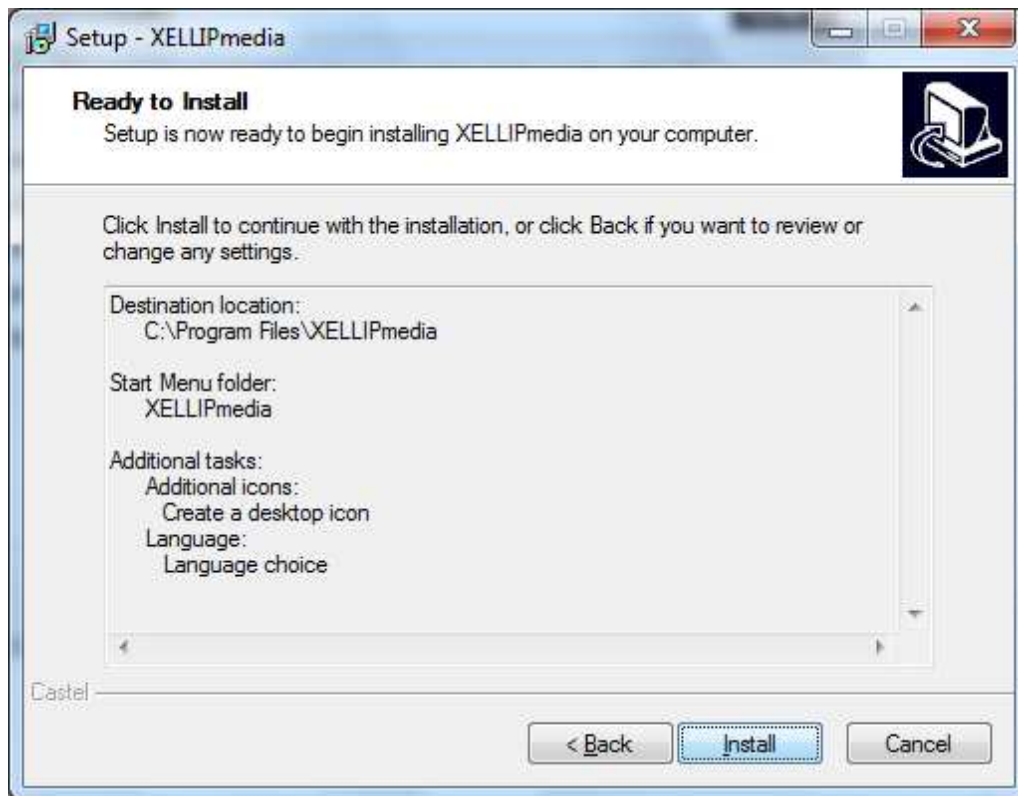
3. Select the installation path or leave the default path and click on "Next",



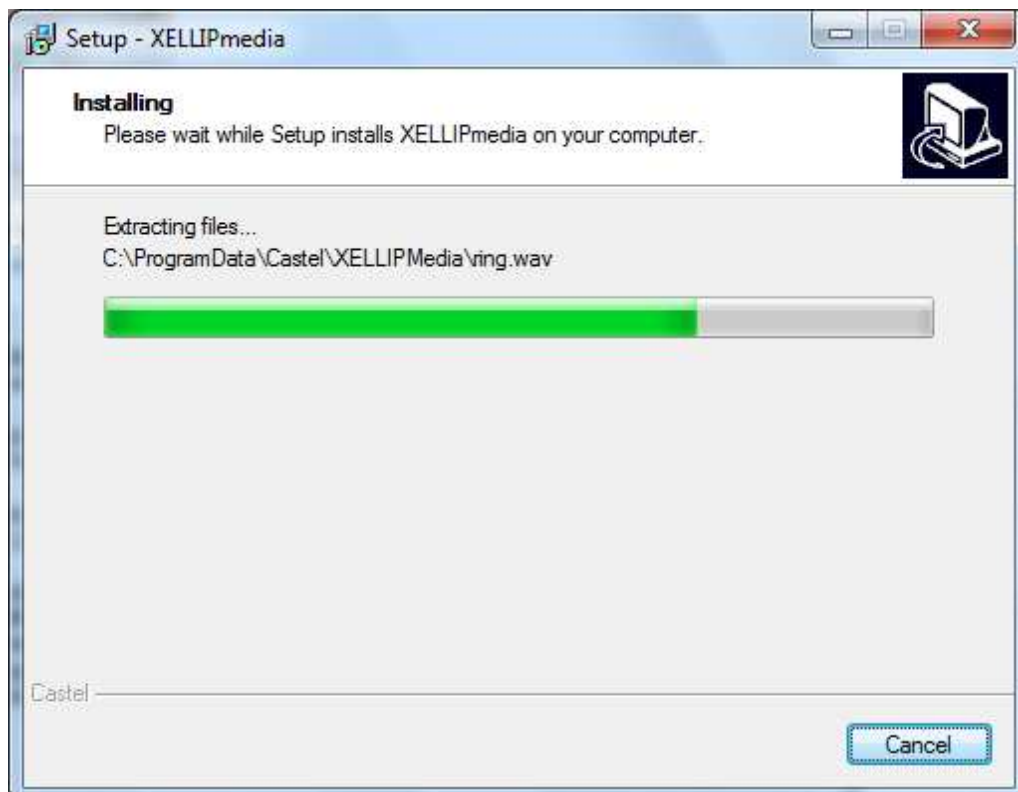
4. Select the name of the shortcut or leave the default name and click on "Next",

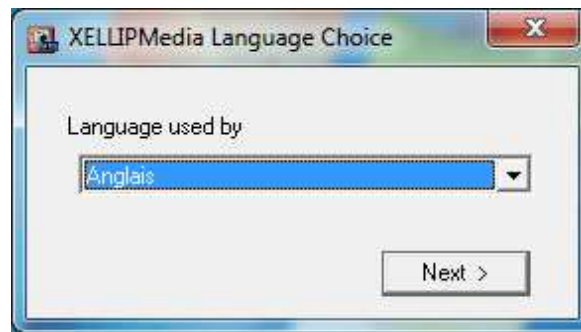


5. Select "Language choice" (you can create a desktop shortcut and/or a quick launch icon) and then click on "Next",



6. Check the installation parameters and click on "Install",





7. Select the language and then "Next".

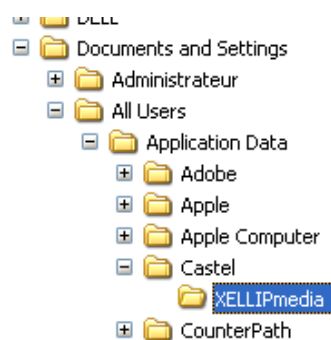


8. Click on "Finish".

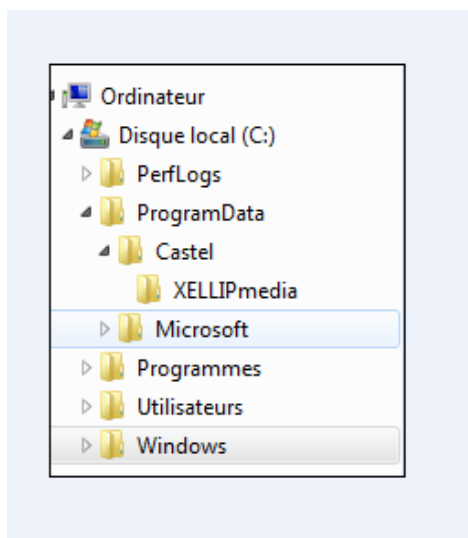
The installation of **XELLIPMedia** is complete.

XELLIPMedia is systematically installed for all users in order to ensure that even basic users can access the program. This means that the configuration files of the application are stored in the folder reserved for all users in the Windows system.

- For Windows 2000, Windows XP and Windows Server 2003



- For Windows Vista, Windows 7 and Windows Server 2008



This means that any user with "standard" or "administrator rights" will be able to modify the settings. Users with restricted rights will not be able to modify them (or in any case will not be able to save any changes made due to a lack of writing rights.)

CONFIGURATION FILE

The configuration parameters are included in a configuration file called : XellipMediaConfig.xml.

These parameters are:

- All application parameters configured with Configuration menu (Do not modify)
 - <GeneralOptions> : Options tab
 - <SecurityOptions>: Security Tab
 - <SipAccountOptions>: SIP Account Tab
 - <NetworkOptions>: Network tab
 - <FunctionalityOptions>: Réserve CASTEL
 - <MultimediaOptions>: Multimedia setting tab
 - Default commands configuration during communication. These parameters are used to display DTMF commands during communication when remote SIP client doesn't send any available commands.

Example:

```
<CommandOptions>
  <Enable>true</Enable>
  <CommandDescription>
    <Id>1</Id>
    <Label>Commande1</Label>
    <Dtmf>1</Dtmf>
  </CommandDescription>
  <CommandDescription>
    <Id>2</Id>
    <Label>Commande2</Label>
    <Dtmf>2</Dtmf>
  </CommandDescription>
  <CommandDescription>
    <Id>3</Id>
    <Label>Commande3</Label>
    <Dtmf>3</Dtmf>
  </CommandDescription>
</CommandOptions>
```


- < SipClientRes >
 - SIP clients in the phone book (Do not modify)
- <DebugOptions>
 - Provides logs during the execution of the software.
 - Level = 0 : No log
 - Level = 1 : Logs are available in dedicated window.
- <MaylisOptions>
 - Maylis tab
- <CASTELSuiteOptions>
 - CASTELSuite tab

FIRST USE OF XELLIPMEDIA

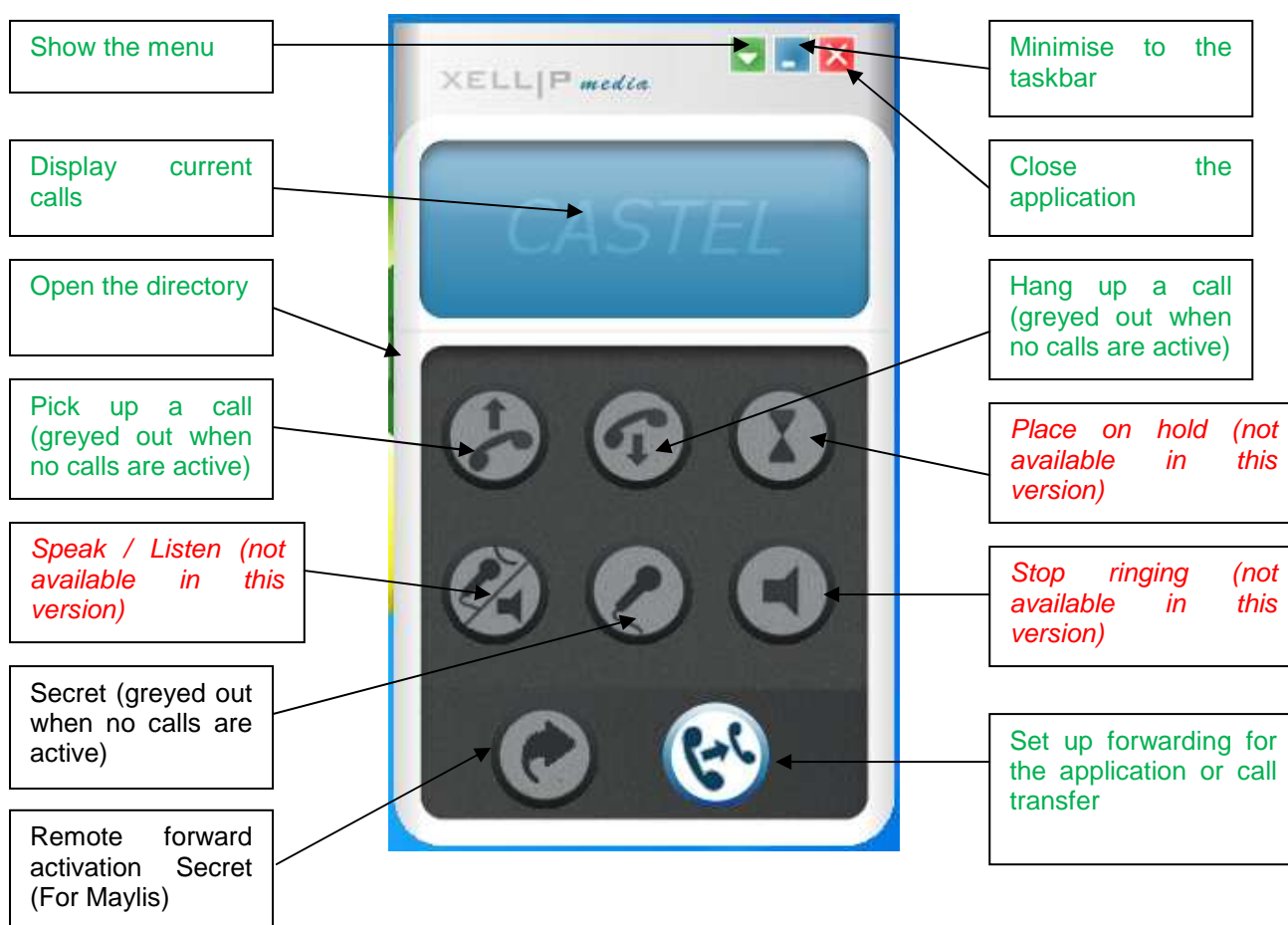
Launching the software – First notions

To launch the application, click on the shortcut in:

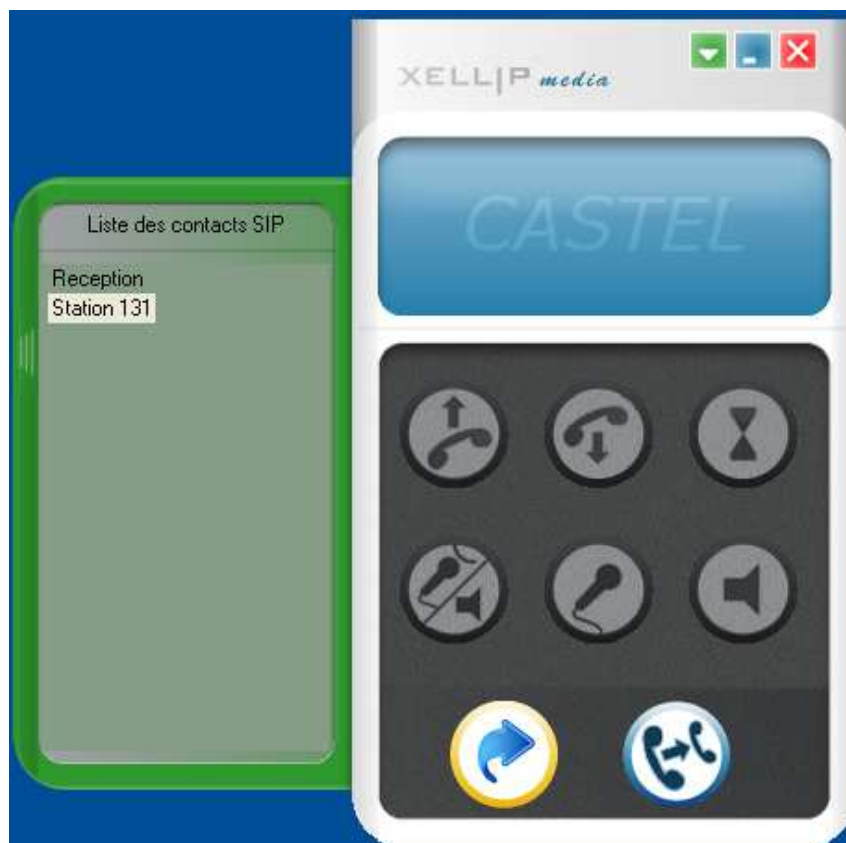
Start → All Programs → **XELLIPMedia** → **XELLIPMedia**.

Introduction to the main window

The **XELLIPMedia** application appears as follows when not making or receiving a call:




When the window of the directory of SIP addresses is open:

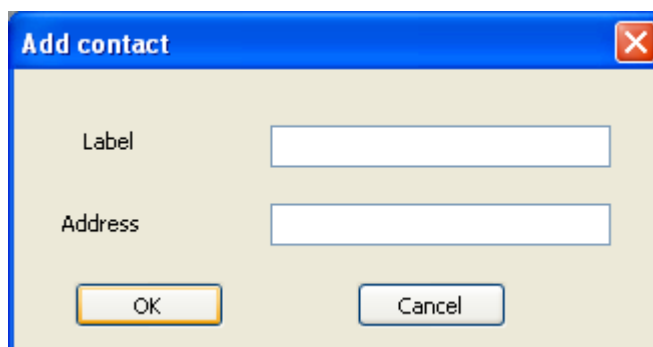


Adding a SIP contact to the directory

In order to establish communication with another party, first you need to add SIP contacts to the **XELLIPMedia** application.

To do so:

1. Click on the button to show the menu () and select "Add a SIP contact". Otherwise, right click in the "List of SIP contacts" window and select "Add a SIP contact".
2. The following window opens:



3. Add:
 - a. A name which will appear in the contact window.
 - b. A SIP address which must have the following format:
 - i. If **XELLIPMedia** is registered with a server, the address can be the station extension number (124, 356, etc.) or a SIP-compatible address with the following format: sip: xx@IPaddress (sip: 1@192.168.55.66)
 - ii. If **XELLIPMedia** is not registered with a server, the address must be a SIP-compatible address with the following format: sip: xx@IPaddress (sip: 1@192.168.55.66:5060)

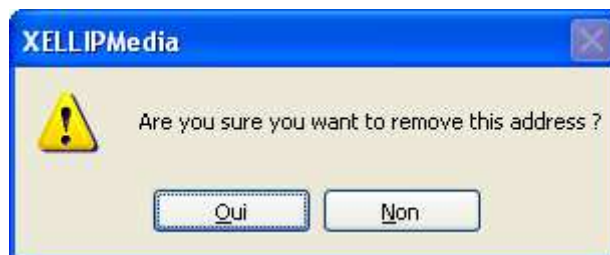
4. The contacts then appear in the list of SIP contacts:



Deleting a SIP contact


To delete a SIP contact:

1. In the contact list, right click on the item you want to delete.
2. Click on "Delete" in the menu.
3. A confirmation window pops up:

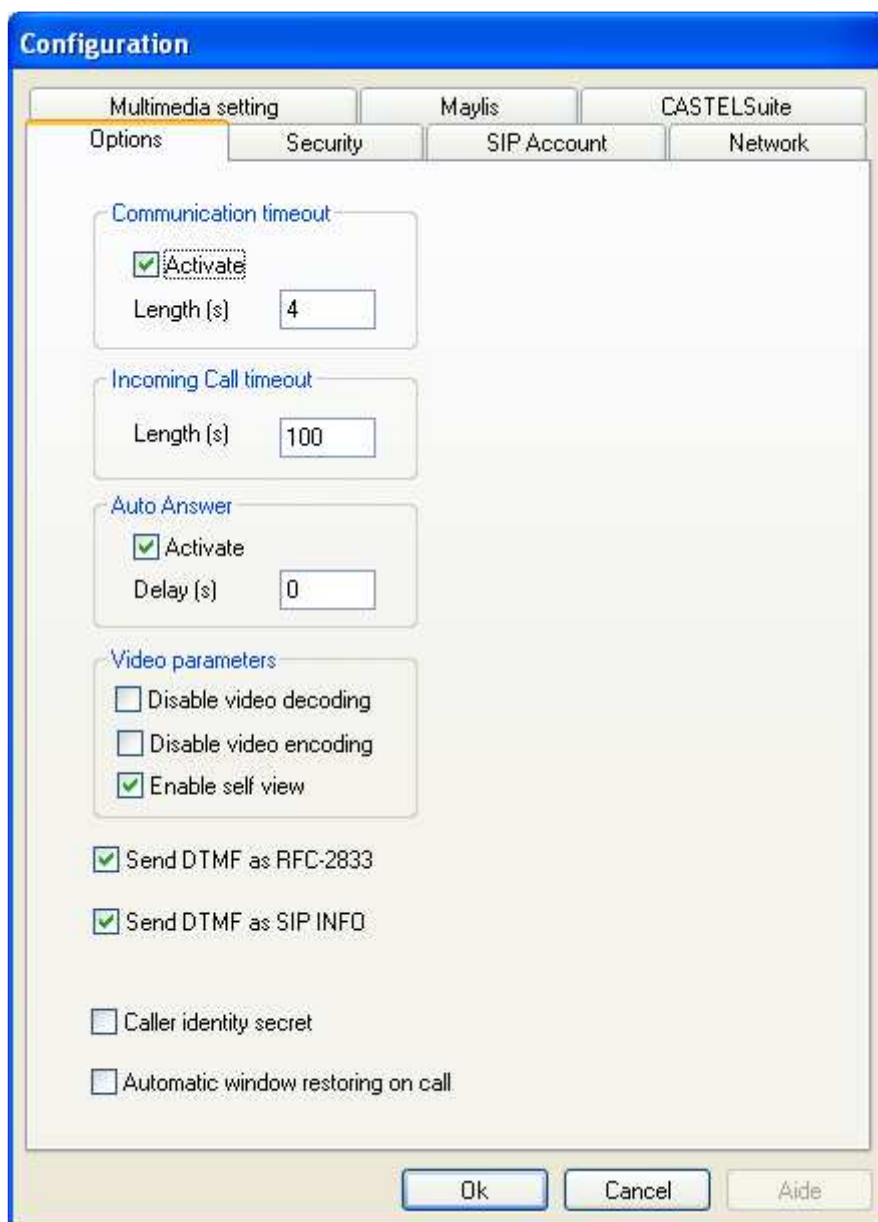


4. Click on "Yes"

Application options

In the menu (), click on "Configuration". A configuration window with the following tabs pops up:

Miscellaneous



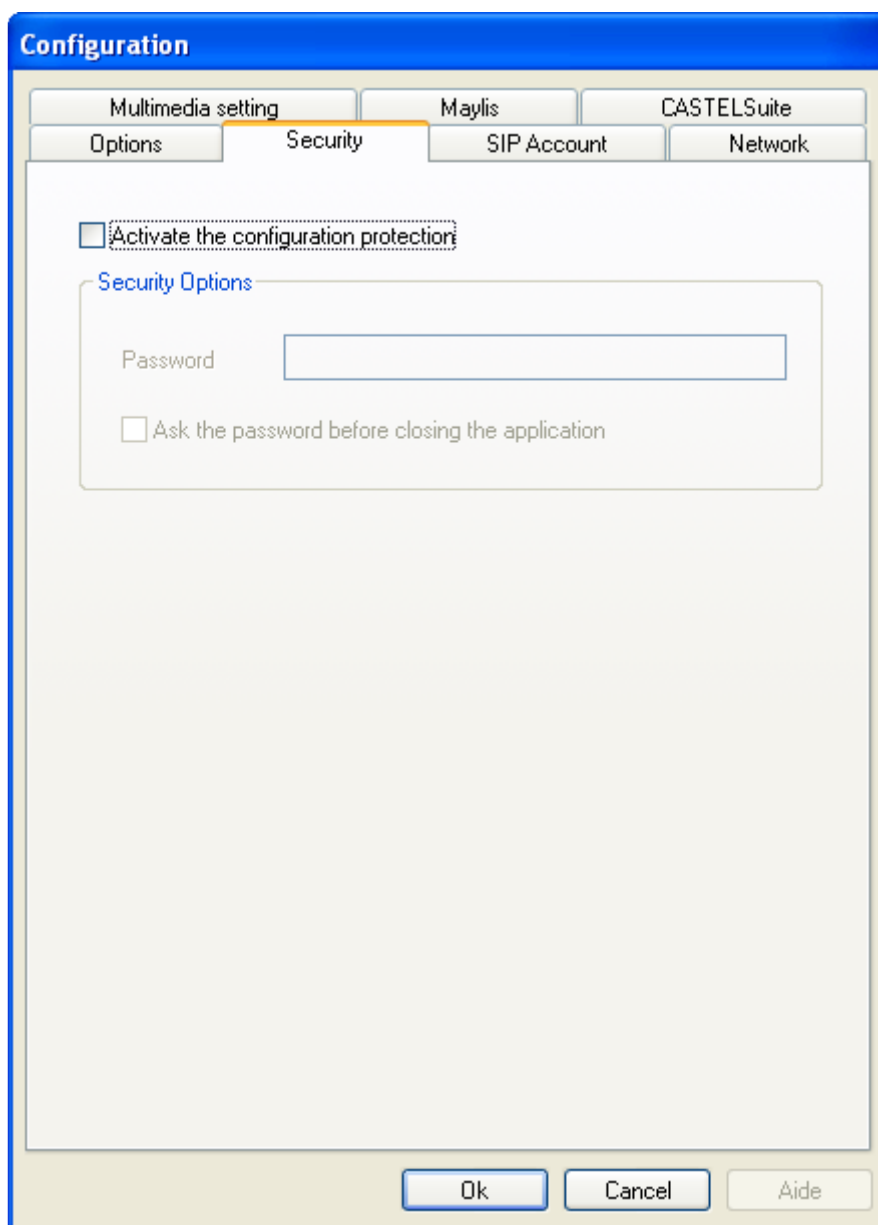
The "Miscellaneous" tab allows you to configure the main operating parameters:

- Communication time-out: to configure a maximum communication time between the **XELLIPMedia** application and a party.
- Incoming call time-out: to configure a maximum incoming call time between the **XELLIPMedia** application and a party.
- Auto Answer: in order for communication to be established automatically as soon as a call is received as long as the station is not already making or receiving a call.
- Video parameters
 - Disable video decoding : Disable video reception. No video from remote party is displayed.
 - Disable video encoding: Disable video sending. No video will be sent to the remote party.
 - Enable self view: Inserts an image from your webcam at the bottom right of the video window. This functionality is not available if one of the upper checkbox is checked.
- Sending DTMF codes in RFC-2833 mode: to carry DTMF codes according to the RFC-2833 standard
- Sending DTMF codes in SIPINFO: DTMF codes are sent in a SIP INFO message

- Caller identity secret : The caller's IP address is not displayed.
- Automatically restore the window when a call comes in: when the **XELLIPMedia** is minimised (in the Windows taskbar) and a call arrives, the window automatically reappears. This option allows you to remain available to receive calls while continuing to use your PC for other tasks.

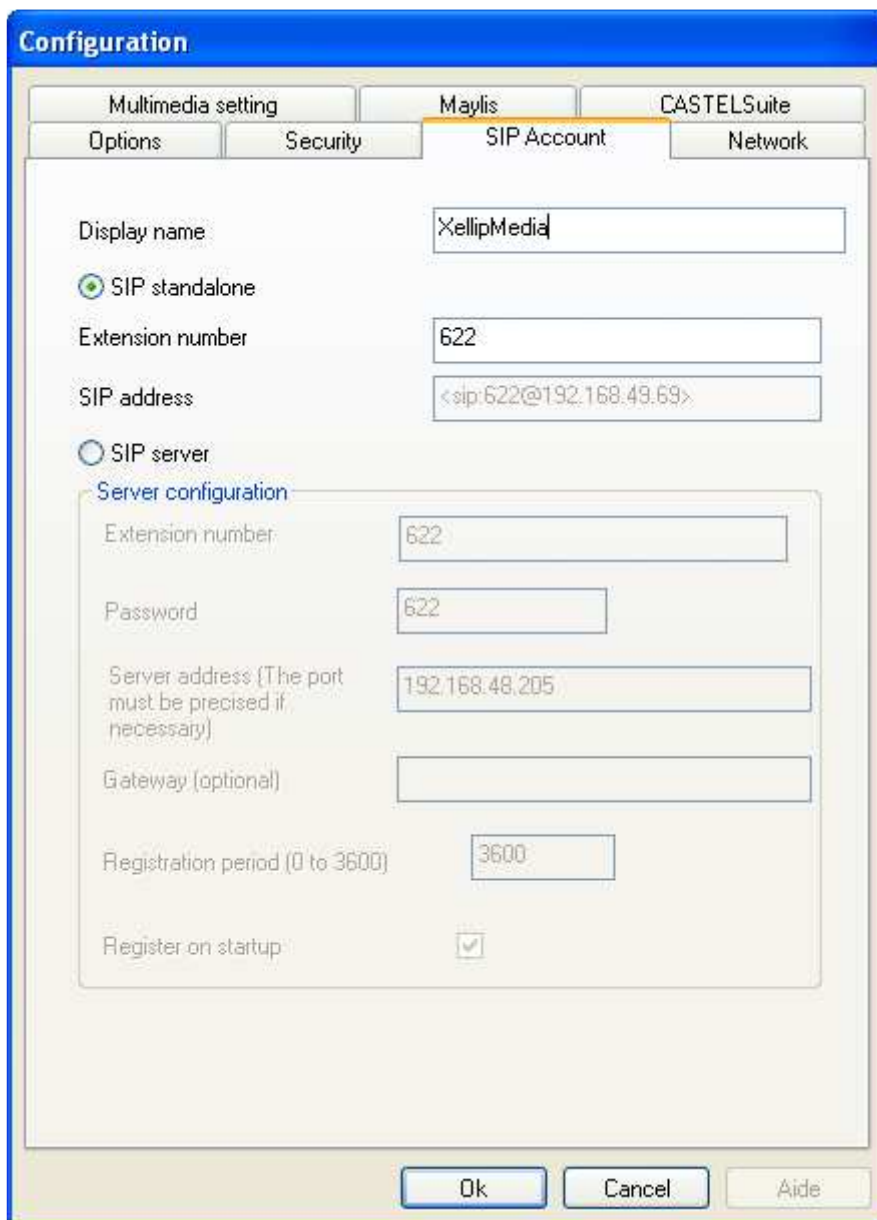
Security

The security tab allows you to configure the use of a secure mode that requires a password to be entered before modifying the settings (displaying this configuration window, adding or deleting SIP contacts, etc.) and/or before closing the application.



SIP account

This tab allows you to configure the SIP parameters of **XELLIPmedia**



The screenshot shows the 'Configuration' window with the 'SIP Account' tab selected. The 'Display name' is 'XellipMedia'. The 'SIP standalone' radio button is selected. The 'Extension number' is '622' and the 'SIP address' is '<sip:622@192.168.49.69>'. The 'SIP server' radio button is unselected. The 'Server configuration' section is visible, showing 'Extension number' as '622', 'Password' as '622', 'Server address' as '192.168.48.205', 'Gateway (optional)' as empty, 'Registration period' as '3600', and 'Register on startup' checked.

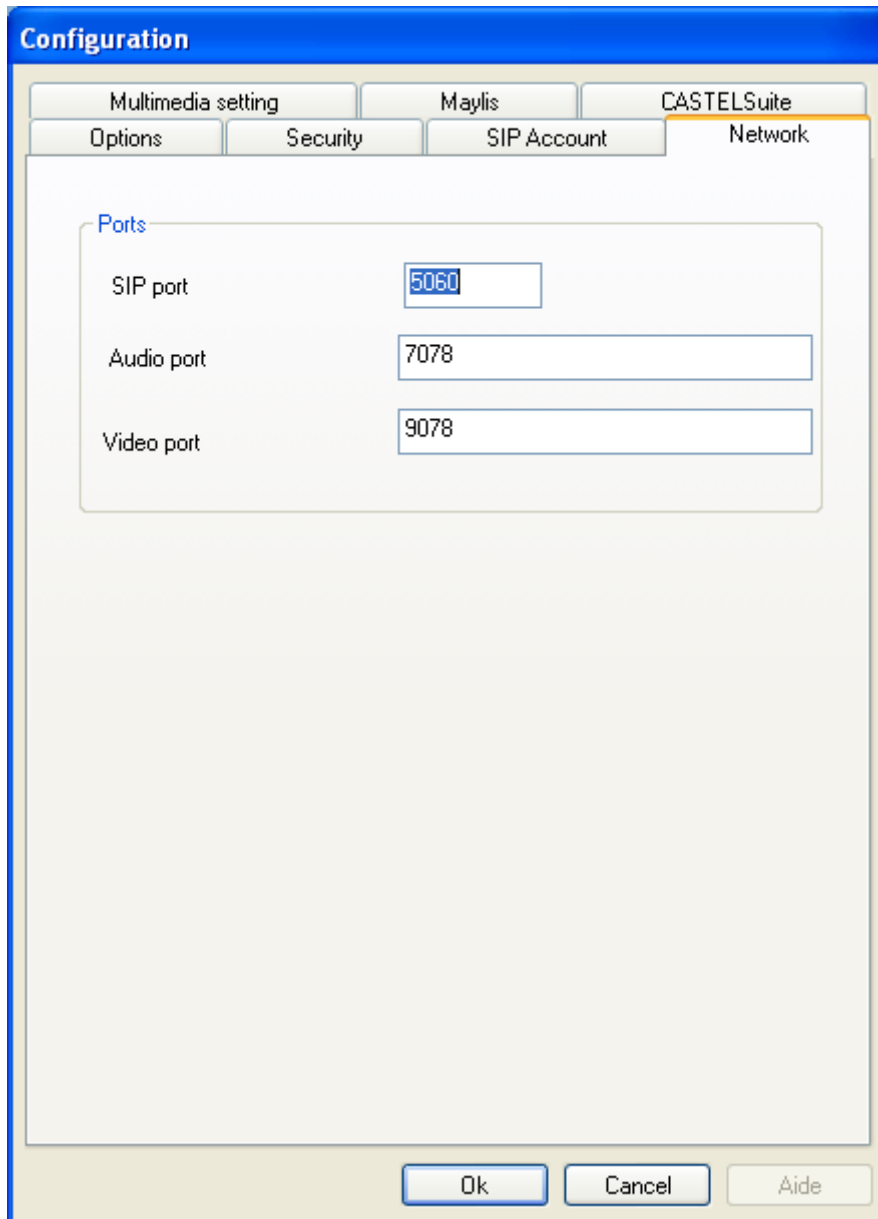
- **Display name:** This field defines the identity of the station as a name. This is the display name that will be used to identify **XELLIPMedia** with the various parties.
- Sip Standalone
 1. Extension number: This field is used to recreate the **XELLIPMedia** number in the following format: <sip: extension_number@PC_IP_address>

*Example: XELLIPMedia is configured with NOMAFF as the display name and NUMEROEXT as the extension number, in which case its complete identity is:
 NOMAFF <sip: NUMEROEXT@192.168.49.66> in standalone mode*

- SIP server:
 - Extension number: Extension number of **XELLIPMedia** in relation to the server.
 - Password: Password associated with the SIP identity.
 - Server address: Address of the SIP server.<Ip Address> or <IpAddress:Port>
 - Gateway (Optional): Optional gateway for the server
 - Registration period: Period for registration with the SIP server in order to indicate a possible disconnection.
 - Register on startup: Automatic registration when starting the application

Network

This tab allows you to configure the network parameters of **XELLIPMedia**

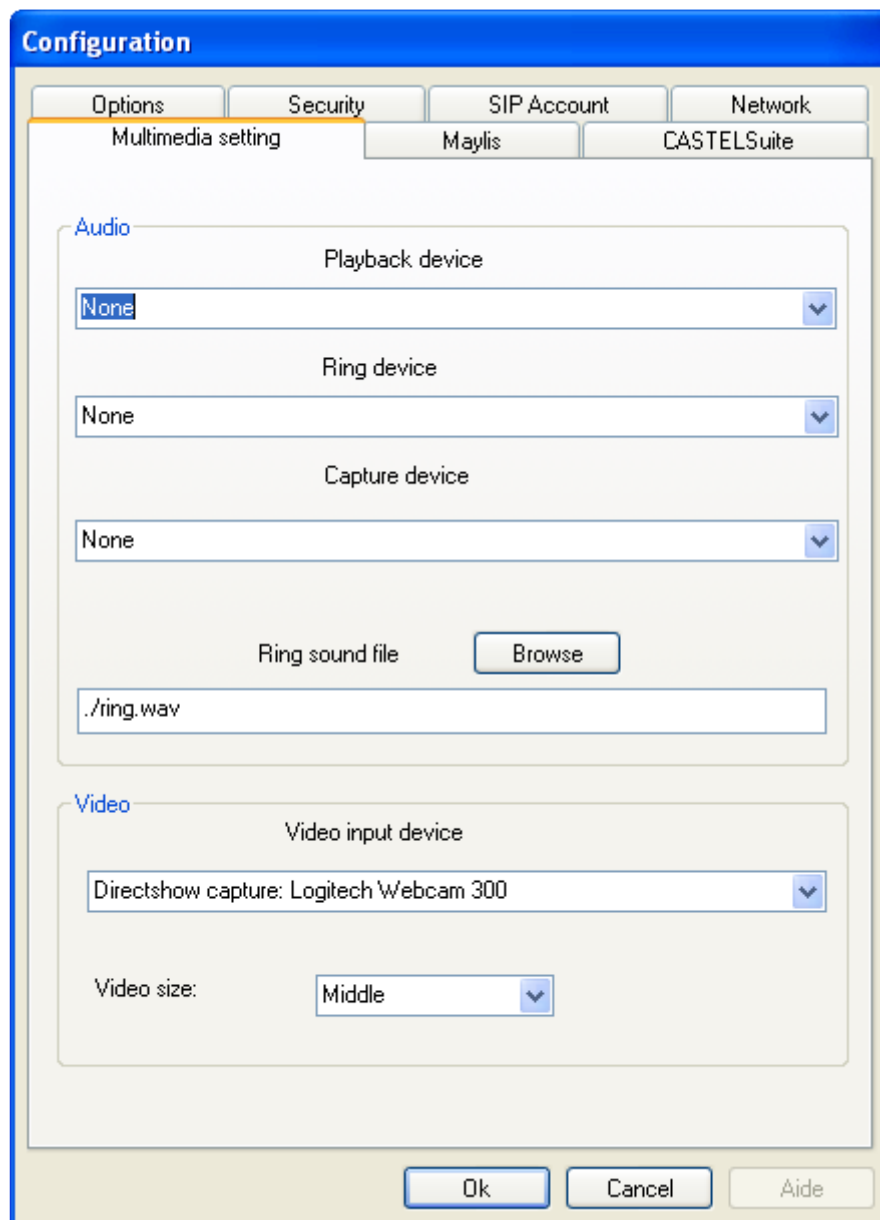


The image shows a 'Configuration' dialog box with a blue title bar. It contains several tabs: 'Multimedia setting', 'Maylis', 'CASTELSuite', 'Options', 'Security', 'SIP Account', and 'Network'. The 'Network' tab is selected and highlighted with an orange border. Inside the 'Network' tab, there is a section titled 'Ports' with three input fields: 'SIP port' (containing '5060'), 'Audio port' (containing '7078'), and 'Video port' (containing '9078'). At the bottom of the dialog box are three buttons: 'Ok', 'Cancel', and 'Aide'.

- SIP port: Port number used by **XELLIPMedia** for its SIP connection. Default: 5060
- Audio port: Port number used by **XELLIPMedia** audio for the RTP protocol (default: 7078)
- Video port: Port number used by **XELLIPMedia** video for the RTP protocol (default: 9078)

Multimedia

This tab allows you to configure the multimedia parameters of **XELLIPMedia**

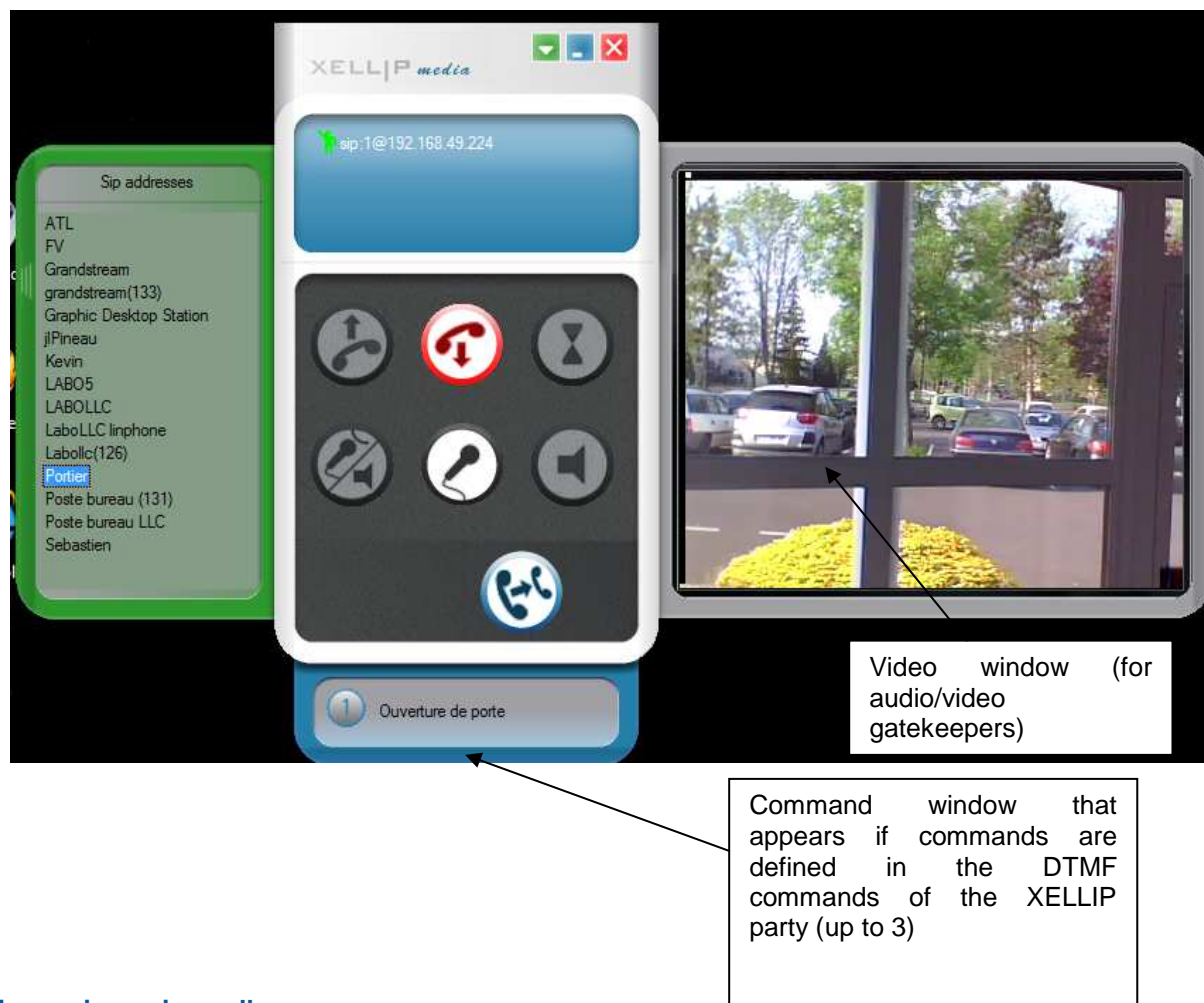


- Playback device: Peripheral used to listen to the other party during communication.
- Ring device: Peripheral used to generate the ringtone
- Capture device: Peripheral for inputting sound for the other party. (Normally the microphone)
- Ring sound file: WAV file which contains the ringtone for **XELLIPMedia** (16 bits)
- Video input device: Camera
- Video size: Small, Middle or large

USING THE APPLICATION

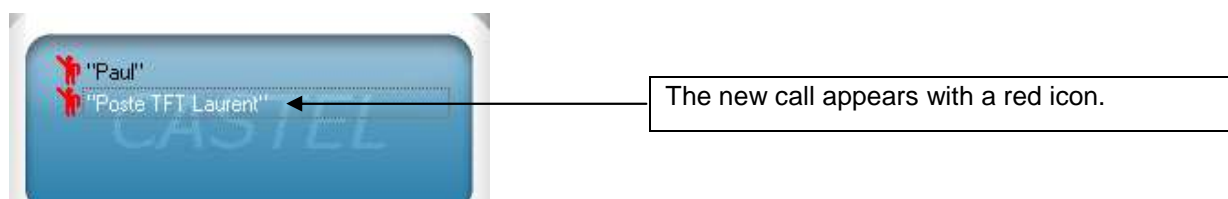
Making a call

To make a call, simply double click on a contact in the contact list (or else right click on the contact and select call from the menu).



Managing an incoming call

When **XELLIPMedia** receives a call, the call appears in the call/communication window:



When a gatekeeper calls XELLIP Media, the new call is displayed in the call list with a red icon. The call management buttons are then enabled and can be used to manage the call.

In the event of receiving several simultaneous calls, you can select one call by left clicking on the station display.



The button allows you to take a call and establish communication.



The button allows you "reject the call", ending it without picking up. A busy message is then sent to the gatekeeper.

Forwarding your station

You can forward calls to another recipient by enabling forwarding.

To do so, select the call recipient from the directory, then enable forwarding by clicking on the forwarding button



All calls are then redirected to this new recipient.

A specific message is displayed on the screen.



When making or receiving a call

Muting the station microphone



When the button is pressed, the operator will not be heard by the gatekeeper.



The button shows that the station microphone is muted.

Running a command

You can run one or more commands from **XELLIPMedia**. For this purpose, you must have configured them previously from the web server of the XELLIP station. In this way, you can configure up to three commands that can be used from **XELLIPMedia**.

These commands appear in a secondary window displayed under the main window:



The window is resized according to the number of commands to be displayed, and will appear smaller for one or two commands.

You can then click on the button corresponding to the desired command in order to run it.

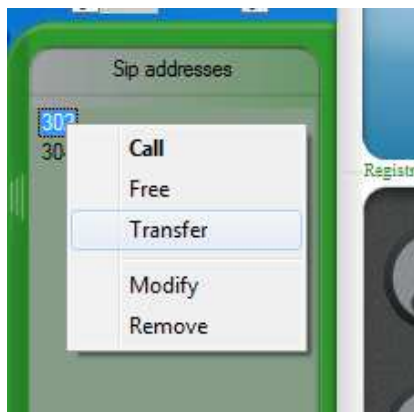
Transferring a call

First, select a party from the directory list and click on the



button. This allows you to transfer the current call to another contact.

You can also transfer a call by right-clicking on the transfer recipient in the "Transfer" menu.



INTERFACING MAYLIS

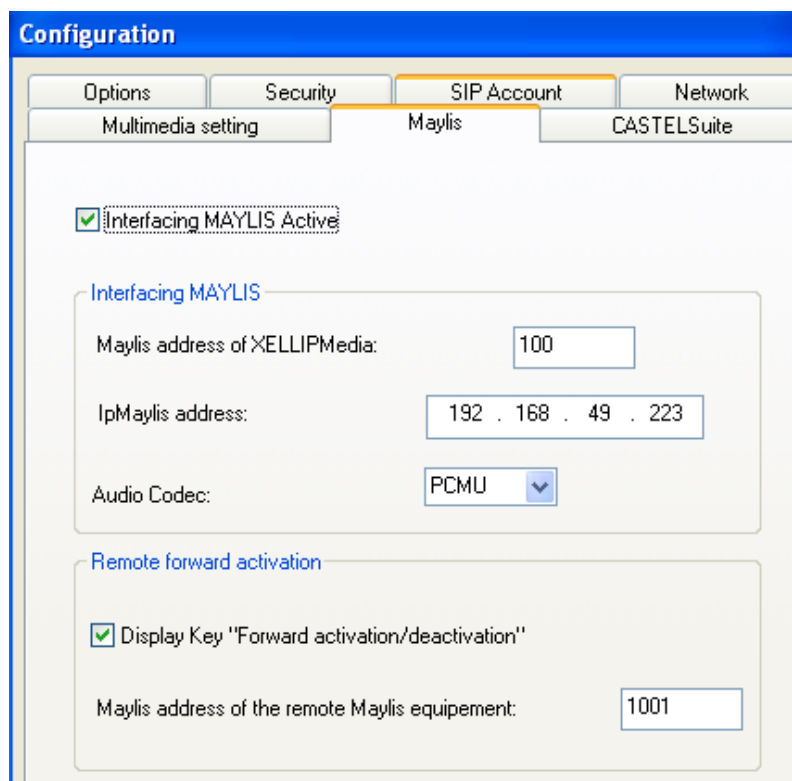
Configuration

Interfacing Maylis: Starting with version 2.3.0, XellipMedia proposes to establish audio communication only with equipment of Maylis range (RTP audio communication with IpMaylis)

This feature is available by activating in the Maylis tab, interfacing with IpMaylis.

In this case, XellipMedia becomes an equipment Maylis full sending and receiving messages on the Maylis bus via IpMaylis.

Setting the connection with IpMaylis is done via the following tab:

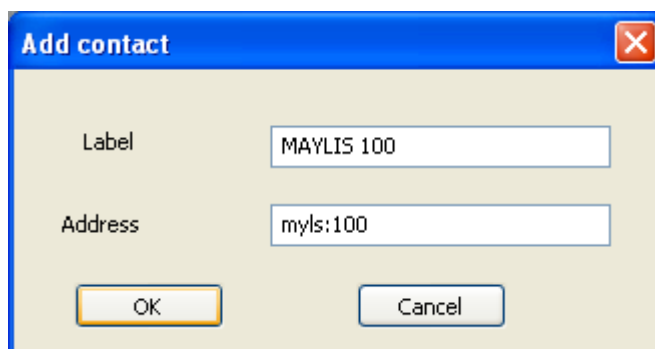


This configuration interface lets you specify:

- The Maylis address of XellipMedia
- The IP address of IpMaylis
- The audio codec used (must be identical to the one selected in the IpMaylis)
- The display of the "Forward activation/deactivation" button. This key allows to activate remote forward on a remote device.

Add Maylis equipment in address book

It is possible to configure a Maylis device in the directory by appending "myls:" in front of the address.



During a call, if the address is prefixed by myls: <addr>, the call is forwarded to IpMaylis.

Remote forward activation

If this feature is enabled, clicking this button generates a message activating the remote forward(Message FUNCTION defined in Maylis protocol).

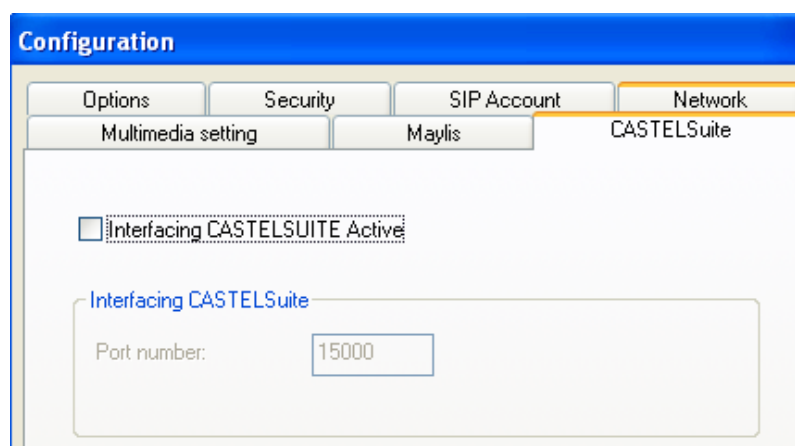
INTERFACING WITH CASTELSUITE

Configuration

Interfacing CASTELSuite: Starting with version 2.3.0, it is possible to perform remote command on XellipMedia from CASTELSuite.

In CASTELSuite configuration file, report XellipMedia as a third party application in order to receive events or commands for which XellipMedia has asked to be notified (See Notice CASTELServeur Chapter "Setting up a third-party application")

Setting the CASTELSuite connection is made via the following tab:



This configuration interface lets you specify:

- The port number on which CASTELSuite connects to transmit data (events or commands). This number must be configured in CASTELSuite (ThirdPartSystem-> system-> port)

Features are available remotely:

- Force XellipMedia to answer a call from a Maylis device.
- Force XellipMedia to release the communication with a corresponding Maylis
- Simulate pressing the TALK button / LISTENING causing the message is sent on the bus MODE MAYLIS.